



NORTEL

Nortel Visualization Performance and Fault Manager

Installation

Release: 2.0

Document Revision: 02.02

www.nortel.com

NN48014-300

Nortel Visualization Performance and Fault Manager

Release: 2.0

Publication: NN48014-300

Document status: Standard

Document release date: 21 September 2009

Copyright © 2009 Nortel Networks

All Rights Reserved.

Printed in Canada, India, and the United States of America

Microsoft, Microsoft Windows, Windows Server 2003, Windows XP, and Windows Vista are trademarks of Microsoft Corporation.

Red Hat and Red Hat Enterprise are trademarks of Red Hat, Inc.

Contents

New in this release	5
Features	5
Other information	5
Multimedia content	5
Introduction	7
Fundamentals	9
Installation process	9
License process	10
Uninstallation process	10
System requirements	11
Installation of VPFM	13
Obtaining the license file	13
Installing VPFM on Windows	14
Installing VPFM on Linux	17
Uninstallation of VPFM	21
Uninstalling VPFM on the Windows platform	21
Uninstalling VPFM on a Linux platform	23

New in this release

This is the initial release of the Visualization Performance and Fault Manager (VPFM) application. This document contains information about installing VPFM.

- ["Features" \(page 5\)](#)
- ["Other information" \(page 5\)](#)

Features

This is the second release of Visualization Performance and Fault Manager (VPFM).

The following platforms support VPFM:

- Windows Server 2003 R2
- Windows Server 2008
- Red Hat Enterprise Linux 5.2

Other information

See the following section for information about changes that are not feature related:

Multimedia content

Some conceptual and procedural topics covered in the documentation are now available in a multimedia format. Links to the multimedia content are provided contextually in the documentation.



"WATCH THE VIDEO" identifies a link to multimedia content.

Introduction

This guide describes how to install Visualization Performance and Fault Manager (VPFM) on Windows and Linux platforms.

Navigation

- ["Fundamentals" \(page 9\)](#)
- ["System requirements" \(page 11\)](#)
- ["Installation of VPFM" \(page 13\)](#)
- ["Uninstallation of VPFM" \(page 21\)](#)

Fundamentals

This section provides basic information about the installation process of Visualization Performance and Fault Manager (VPFM).

Navigation

- ["Installation process" \(page 9\)](#)
- ["License process" \(page 10\)](#)
- ["Uninstallation process " \(page 10\)](#)

Installation process

You install VPFM using a wizard based installer. You can download the VPFM software from www.nortel.com (login required) in both Windows and Linux versions.

Unified Communications Management (UCM) is installed at the same time as VPFM and provides the common platform with which to integrate VPFM with other UCM applications such as Network Resource Manager (NRM) and Enterprise Policy Manager (EPM).

In order for the installation of VPFM to be successful, there are some configuration tasks that you must complete before you begin the installation. These pre-installation tasks will ensure that the server where you install VPFM is configured correctly for the VPFM application. These tasks are described in the following multimedia demonstration.

WATCH THE VIDEO 

Click the following link to view a multimedia demonstration about how to configure your server for the VPFM installation
(<http://www31.nortel.com/webcast.cgi?id=8908>).

For more information about installing VPFM software, see ["Installation of VPFM" \(page 13\)](#).

License process

The VPFM licensing policy is based on the number of managed nodes. Following is the list of license types supported for VPFM:

- Evaluation License
- Base License
- Incremental License
- Enterprise License

See the following table for a description of license types. The license types and number of nodes managed are identical for VPFM and VPFM-Lite.

License	Nodes Managed	Max. Licenses	Max. Nodes Managed
Base	Up to 500 Managed Objects (MO)	1	500
Incremental	2000 Incremental MO	10	20,500
Enterprise	Up to 20,000 MO	1	20,500

For information about obtaining a license, see ["Obtaining the license file" \(page 13\)](#).

Uninstallation process

You uninstall VPFM using the wizard based installer.

For more information about uninstalling VPFM, see ["Uninstallation of VPFM" \(page 21\)](#).

System requirements

Ensure your system meets the following requirements to install VPFM:

- 1 GB of available RAM (minimum). This is sufficient for discovering up to 5,000 devices. Add an extra 1 GB of RAM for every 5,000 additional devices.
- 1 GB of available hard disk space (minimum).
- Pentium 4 or equivalent processor (minimum).
- 10 Mbit network access (minimum).
- TCP/IP Network protocols.
- Monitor capable of displaying 256 colors or greater.
- You must have configured the domain name of the server on which you install VPFM and validated the server to resolve its own fully qualified domain name.
- You must have downloaded and installed the latest Java Runtime Environment.

Installation of VPFM

This section describes how to install the Visualization Performance and Fault Manager (VPFM) on the Windows and Linux platform.

Navigation

- ["Obtaining the license file" \(page 13\)](#)
- ["Installing VPFM on Windows" \(page 14\)](#)
- ["Installing VPFM on Linux" \(page 17\)](#)

Obtaining the license file

Perform the following procedure to obtain a VPFM license.

Prerequisites

- You require the License Activation Code (LAC) for the software you want to license (provided by Nortel at purchase).
- You require the MAC address of the server where the VPFM components reside.
- You require the name and password to the license bank if you want to deposit the license into an existing license bank.



[Click here to view a multimedia demonstration about obtaining and installing a VPFM license file http://www31.nortel.com/webcast.cgi?id=8003](http://www31.nortel.com/webcast.cgi?id=8003)

Procedure Steps

Step	Action
1	Open a Web browser window and go to the Electronic Licensing Portal : www.nortellicensing.com .
2	Type your first name, last name, company name, and e-mail address in the appropriate fields at the top of the page.

- 3 In the **License Bank** area, specify the name and password for an existing license bank where you want to deposit.
- 4 Specify your e-mail notification options.
- 5 In the **Submit** field at the bottom of the page, type your LAC.
- 6 Click the **Activate License**.

The system deposits a license in your License Bank and sends a message to the e-mail address specified in step 4 to confirm that the license was created.
- 7 Log on to your license bank using the name and password specified in step 3.
- 8 Click **Download**.
- 9 On the **Generate License** page, type the MAC address for the server where the VPFM components reside.
Use capital letters, separated by colons (XX:XX:XX:XX:XX:XX).
- 10 Click **Create License File**.

A confirmation message informs you that the license was created. The system sends a license (.lic) file to the e-mail address specified in step 4.
- 11 Copy the license file to the server location where the VPFM components reside.
- 12 Store your License Certificate in a secure place for future reference.

--End--

Installing VPFM on Windows

Use the following procedure to install VPFM on a Windows platform.

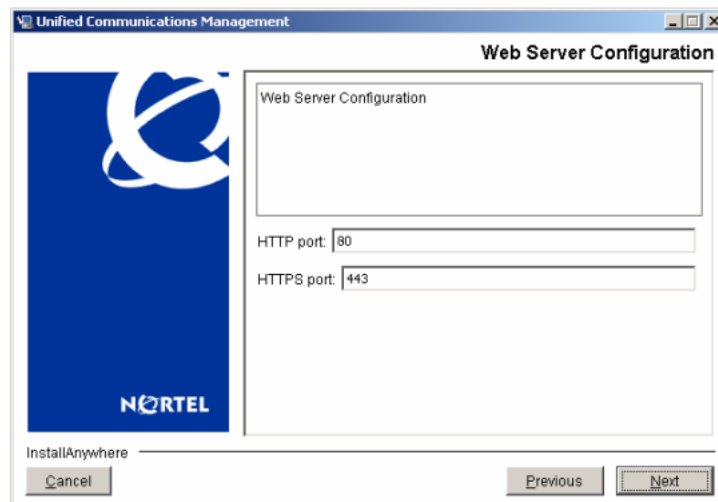
Prerequisites

- Ensure that you have logged on to the server platform as an Administrator or as a user with Administrative privileges to install VPFM on a Windows platform.
- The server must have a hard disk labelled C: or the install will fail.

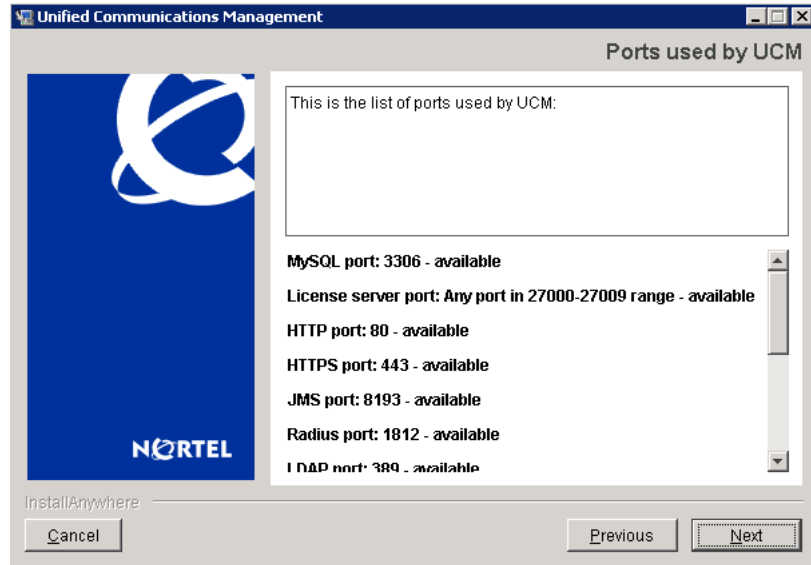
Procedure Steps

Step	Action
1	Double-click the VPFM executable file to launch the VPFM installer. The VPFM installer prepares for installation and then the Introduction screen appears.

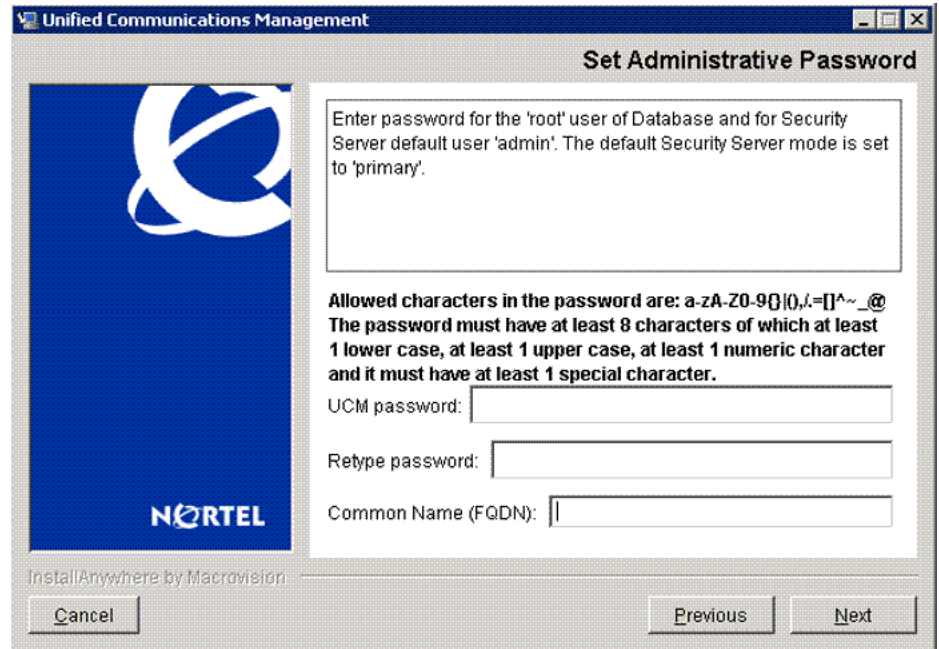
- 2 From the Introduction screen, click **Next**.
An End User License Agreement screen appears.
- 3 Review the terms of the license agreement and if you agree, select **I accept the terms of the License Agreement** option.
- 4 Click **Next**.
The Choose Install Folder screen appears.
- 5 From the **Choose Install Folder** screen, specify the destination folder path for installation.
The default path is *C:\Program Files\Nortel\UCM\VPFM*.
- 6 Click **Next**.
The Choose Shortcut Folder screen appears.
- 7 Select the desired shortcut option.
- 8 Click **Next**.
The License file and port choice screen appears.
- 9 Specify the destination folder path for the License File.
- 10 Enter the HTTPS port for VPFM server web requests.
- 11 Click **Next**.
The Web Server Configuration screen appears.



- 12 Review the port information for the web server, and click **Next**.
The Ports used by UCM screen appears.



- 13 Review the list of ports and ensure that all required ports are available.
The required ports are hard coded and cannot be edited. You will have to manually check that all ports are available.
- 14 Click **Next**.
The Choose UCM folder screen appears.
- 15 Specify the destination folder path for UCM.
- 16 Click **Next**.
The Database and Application Server configuration screen appears.
- 17 Specify the destination folder path for the Database install folder and Application Server install folder.
- 18 Click **Next**.
The Getting information about type of server screen appears.
- 19 Select the type of server and then click **Next**. A screen displays to confirm your choice.
- 20 Click **OK** to continue.
The Set Administrative Password screen appears.



- 21 In the **UCM password** field, enter your new password.
Passwords must be a minimum of eight characters with at least one lower case letter, at least one upper case letter, and at least one special character.
- 22 In the **Retype password** field confirm your new password by reentering it.
- 23 Click **Next**.
The VPFM Pre-Installation Summary screen appears.
- 24 From the VPFM Pre-Installation Summary screen, review the installation options you have selected.
- 25 Click **Next**.
- 26 Click **Install** to start the installation process.
The Installing Visualization Performance and Fault Manager screen appears displaying the installation process as it progresses.
- 27 After the completion of the installation process, the Install Complete screen appears.
- 28 Click **Done** to complete the installation process.

--End--

Installing VPFM on Linux

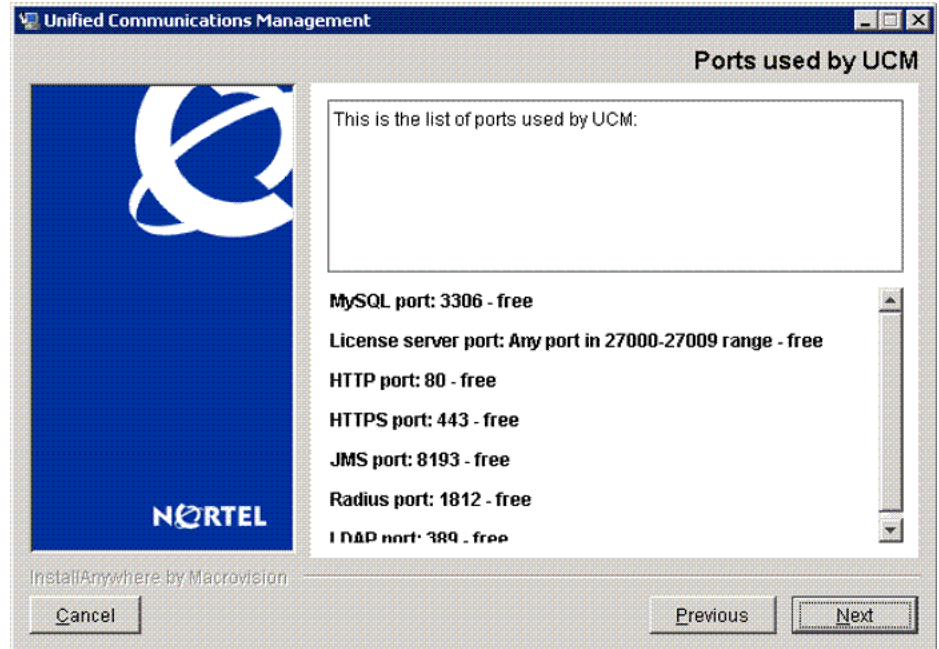
Use the following procedure to install VPFM on a Linux platform.

Prerequisites

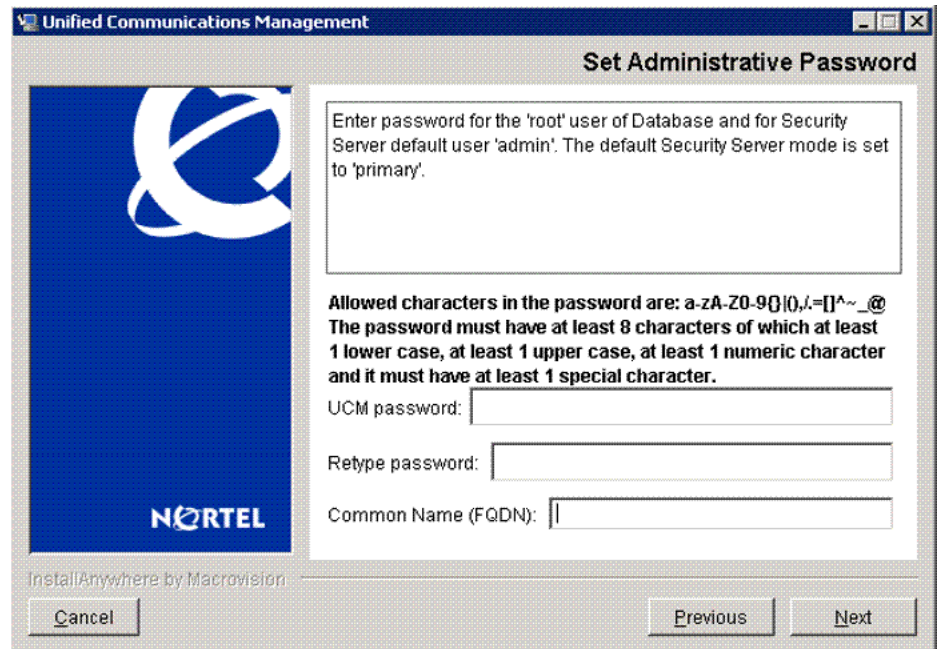
- Ensure that you have logged on to the server platform as root to install VPFM on Linux platform.

Procedure Steps

Step	Action
1	Run the VPFM installer .BIN file from the command line. An Introduction screen appears.
2	From the Introduction screen, click Next . An End User License Agreement screen appears.
3	From the License Agreement screen, select I Accept The Terms Of The License Agreement option.
4	Click Next . The Choose Install Folder screen appears.
5	From the Choose Install Folder screen, specify the destination folder path for installation. The default path is <i>opt/nortel/ucm/vpfm</i> .
6	Click Next . The Choose Link Folder screen appears.
7	Select the desired shortcut option.
8	Click Next . The License file and port choice screen appears.
9	Specify the destination folder path for the License File.
10	Enter the HTTPS port for VPFM server web requests.
11	Click Next . The Ports used by UCM screen appears.



- 12 Review the list of ports and ensure that all required ports are available.
The required ports are hard coded and cannot be edited. You must manually check that all ports are available.
- 13 Click **Next**.
The Choose UCM folder screen appears.
- 14 Specify the destination folder path for UCM.
- 15 Click **Next**.
The Database and Application Server configuration screen appears.
- 16 Specify the destination folder path for the Database install folder and Application Server install folder.
- 17 Click **Next**.
The Set Administrative Password screen appears.



- 18 In the **UCM password** field, enter your new password.
Passwords must be a minimum of eight characters with at least one lower case letter, at least one upper case letter, and at least one special character.
- 19 In the **Retype password** field, confirm your new password by reentering it.
- 20 Click **Next**.
A Pre-Installation Summary screen appears.
- 21 From the Pre-Installation Summary screen, review the installation options you have selected.
- 22 Click **Next**.
- 23 Click **Install** to start the installation process.
The Installing Visualization Performance and Fault Manager screen appears displaying the installation process as it progresses.
- 24 After the completion of the installation process, the Install Complete screen appears.
- 25 Click **Done** to complete the installation process.

--End--

Uninstallation of VPFM

This section describes how to uninstall the Visualization Performance and Fault Manager (VPFM) on the Windows and Linux platform.

During uninstallation, you can remove the VPFM application and delete all application data and databases.

Attention: Nortel highly recommends that you backup the data prior to uninstalling the application.

Navigation

- ["Uninstalling VPFM on the Windows platform" \(page 21\)](#)
- ["Uninstalling VPFM on a Linux platform" \(page 23\)](#)

Uninstalling VPFM on the Windows platform

Use the following procedure to uninstall VPFM on a Windows platform.

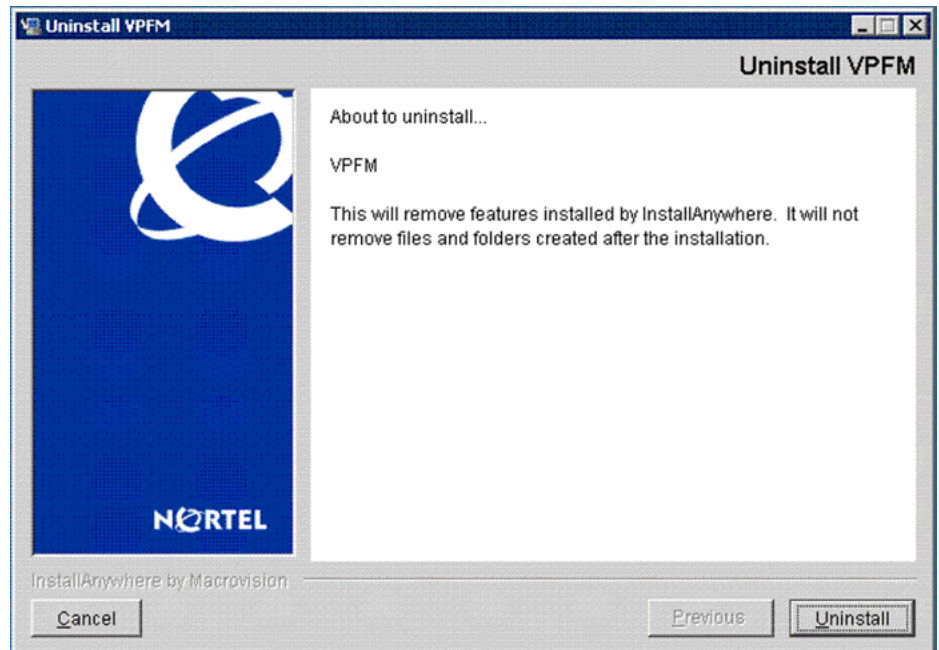
Prerequisites

- Before you begin to uninstall VPFM, close all UCM applications.
- Log on to the server platform as an Administrator or as a user with Administrative privileges to uninstall VPFM without backup on Windows platform.

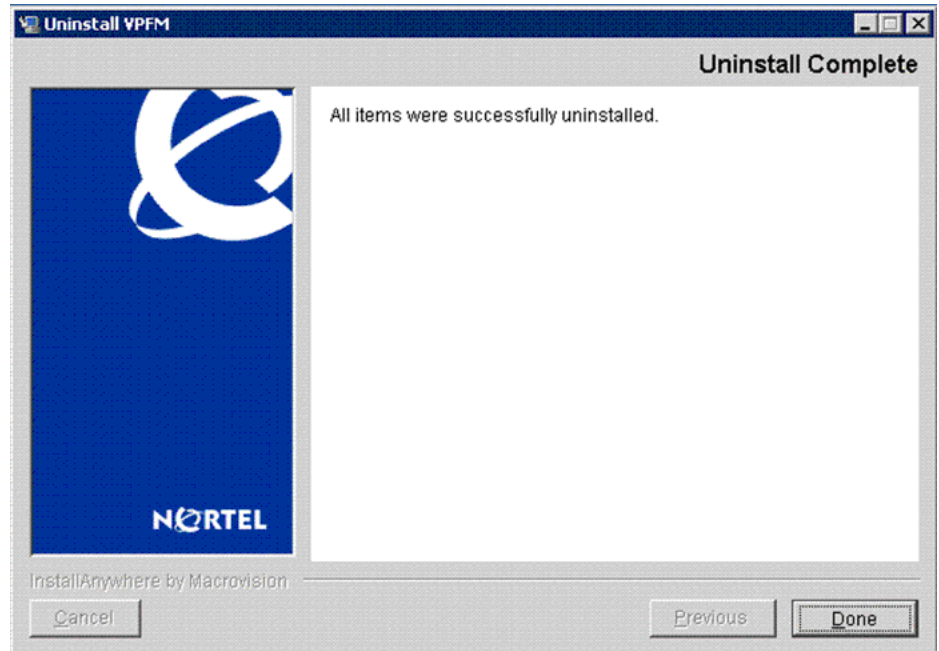
Procedure Steps

Step	Action
1	Navigate to Start Menu>Programs>Nortel>UCM>VPFM>Uninstall Nortel VPFM.
2	Double click the Uninstall_VPFM executable to launch the uninstaller.

The Uninstall Nortel VPFM screen appears.



- 3 Click **Uninstall** to begin the uninstallation process.
The uninstallation process takes several minutes.
- 4 Click **Done** to complete the uninstallation process.



--End--

Uninstalling VPFM on a Linux platform

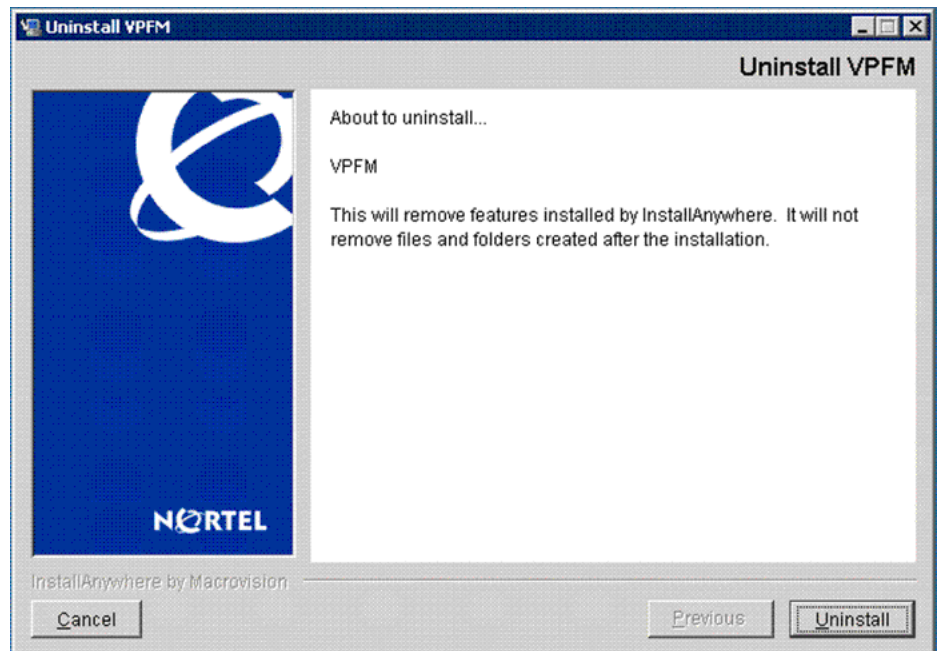
Use the following procedure to uninstall VPFM on a Linux platform.

Prerequisites

- Before you begin to uninstall VPFM, close all UCM applications.
- Log on to the server platform as an Administrator or as a user with Administrative privileges to uninstall VPFM without backup on a Linux platform.

Procedure Steps

Step	Action
1	<p>From the Command prompt, run <code>./<VPFM_HOME>/Uninstall_VPFM/Uninstall_VPFM</code>.</p> <p>The default path set by the VPFM installer is <code>/opt/Nortel/UCM/VPFM/</code>.</p>
2	<p>Double click the Uninstall_VPFM executable to launch the uninstaller.</p> <p>The Uninstall Nortel VPFM screen appears.</p>



- 3 Click **Uninstall** to begin the uninstallation process.
The uninstallation process takes several minutes.
- 4 Click **Done** to complete the uninstallation process.



--End--

Nortel Visualization Performance and Fault Manager

Installation

Copyright © 2009 Nortel Networks
All Rights Reserved.

Printed in Canada, India, and the United States of America

Release: 2.0

Publication: NN48014-300

Document status: Standard

Document revision: 02.02

Document release date: 21 September 2009

To provide feedback or to report a problem in this document, go to www.nortel.com/documentfeedback.

www.nortel.com

Microsoft, Microsoft Windows, Windows Server 2003, Windows XP, and Windows Vista are trademarks of Microsoft Corporation.

Red Hat and Red Hat Enterprise are trademarks of Red Hat, Inc.

