



ExtremeLocation Essentials Setup Guide

ExtremeCloud IQ Essentials Documentation

Published: May 2021

Extreme Networks, Inc.

Phone / +1 408.579.2800

Toll-free / +1 888.257.3000

www.extremenetworks.com

© 2021 Extreme Networks, Inc. All rights reserved.

Extreme Networks and the Extreme Networks logo are trademarks or registered trademarks of Extreme Networks, Inc. in the United States and/or other countries. All other names are the property of their respective owners. All other registered trademarks, trademarks, and service marks are property of their respective owners. For additional information on Extreme Networks trademarks, see www.extremenetworks.com/company/legal/trademarks.

P/N 9036952-00

Contents

Introduction to ExtremeLocation Essentials	2
Setup Procedure 1: Create a Location.....	3
Setup Procedure 2: Create a Network Policy	5

Introduction to ExtremeLocation Essentials

ExtremeLocation Essentials is a scalable, cloud-based location and analytics solutions from Extreme Networks. With real-time location and analytics, you can engage with your customers providing personalized experience for guests and visitors. ExtremeLocation Essentials can also be used to monitor your workflows and assets to improve your overall operation and efficiency.

ExtremeLocation Essentials provides enterprises powerful location services which can scale to thousands of branch sites and 100,000 access points. Use ExtremeLocation Essentials to access unlimited customizable dashboards for data analysis and site monitoring, drill down to floor level at a site to monitor assets, visitors and staff, and create and view reports to help you proactively plan or troubleshoot issues.

ExtremeLocation Essentials offers a range of accurate and granular location accuracy to address your deployment scenarios and includes:

- Real-time and historical location analysis
- New and repeat visitor tracking
- Engagement time monitoring
- Site- or zone-specific intelligence
- Assets and employee tracking

ExtremeLocation Essentials supports multi-site, multi-AP deployments that provide support to thousands of sites and one hundred thousand access points. Hosted on the cloud, it provides a resilient, always-available service to meet your location and analytics needs.

With ExtremeLocation Essentials, you can react quickly to a visitor or customer to your site or venue. Use this feature to provide a customized welcome message to customers upon arrival. Enhance the quality of engagement with visitors by promoting coupons, offers, advertisements, and other real-time notifications to visitors' devices.

Upload a floor map of an area of interest and create zones on the floor map that meet your requirements. A zone is an area covered by an AP or a sensor. You can also detect devices, visitors, and staff within a zone. You can locate and track assets, view which zones are popular or unpopular, and track (live and historical) time spent by users or staff members in a zone.

Use ExtremeLocation Essentials to auto classify devices based on user-defined rules. Separating devices enhances accurate visitor analysis. It also improves asset tracking and monitoring of staff activity.

ExtremeLocation Essentials displays crowding events in real-time. A crowding event occurs when the ratio of the number of visitors to the number of staff in a category or a zone exceeds the minimum threshold value

configured for that category or configured globally. Real-time crowding events can either be configured globally or by category, and real-time event notification and analytics can be generated. Active events for a category are viewed in the floor plan by zone so that you can identify which categories need immediate staff attention.

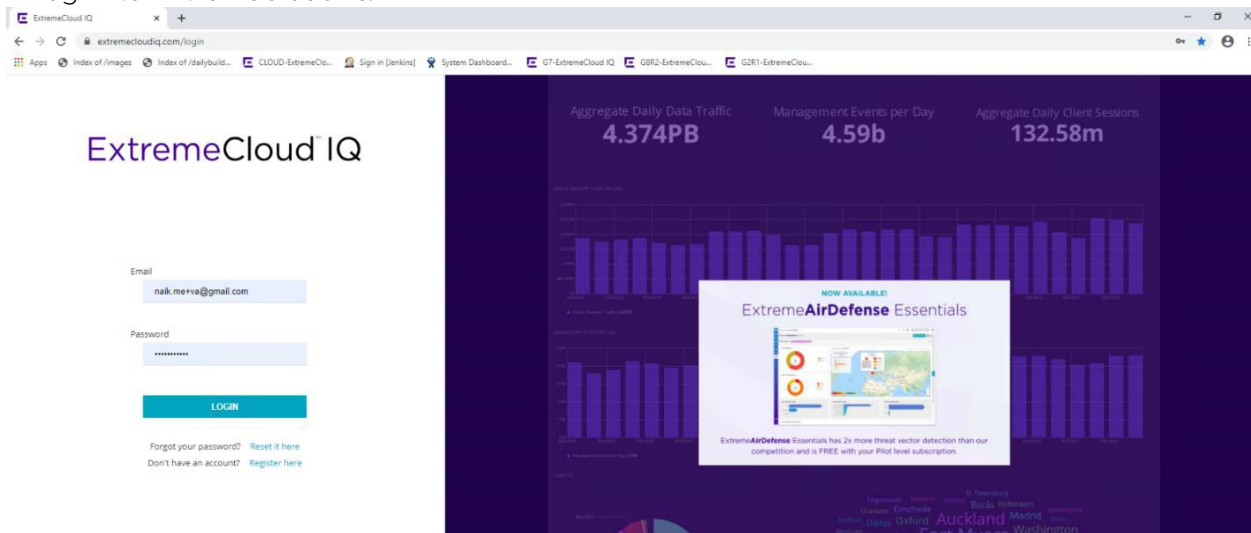
ExtremeLocation Essentials supports export of the dashboard as reports. Reports can be exported as PDF files. ExtremeLocation Essentials's report scheduling interface enables you to create periodic reports that are emailed automatically. Schedules can be set daily, weekly, or monthly.

Use ExtremeLocation Essentials to track your assets throughout your site. An asset is a physical device or item that you want to track. With ExtremeLocation Essentials, you can track such critical assets within your sites using BLE beacons or by using the device's inbuilt Wi-Fi radio. The Asset Tracking and Management feature enables you to locate a tracked asset within your site. ExtremeLocation Essentials Asset Tracking also can raise alarms if your tracked asset moves out of its designated area or enters an area where it is prohibited to enter. It can also raise an alarm if the asset that you track is not seen within your site for a configured period of time.

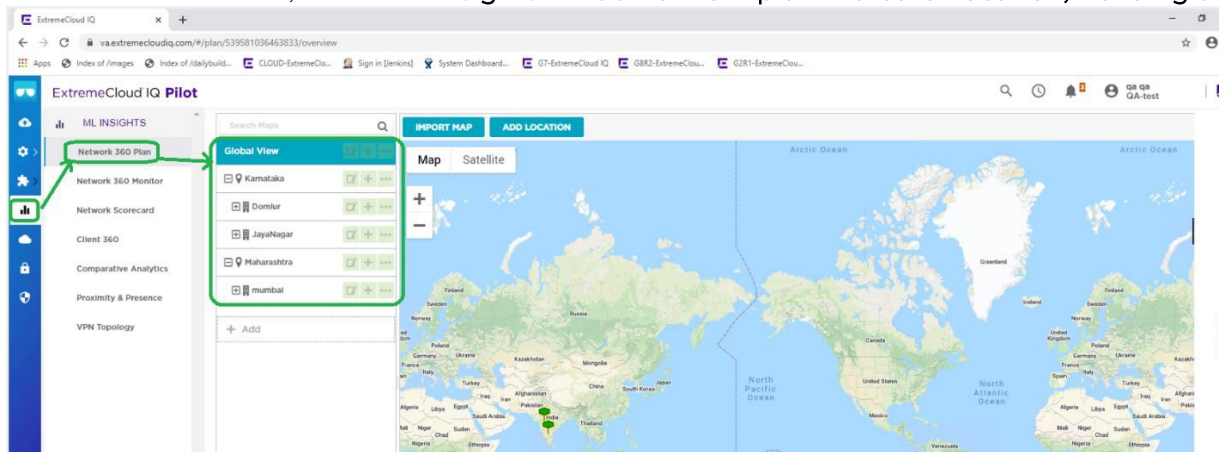
Setup Procedure 1: Create a Location

To set up ExtremeLocation Essentials, begin by creating a location. Follow these steps:

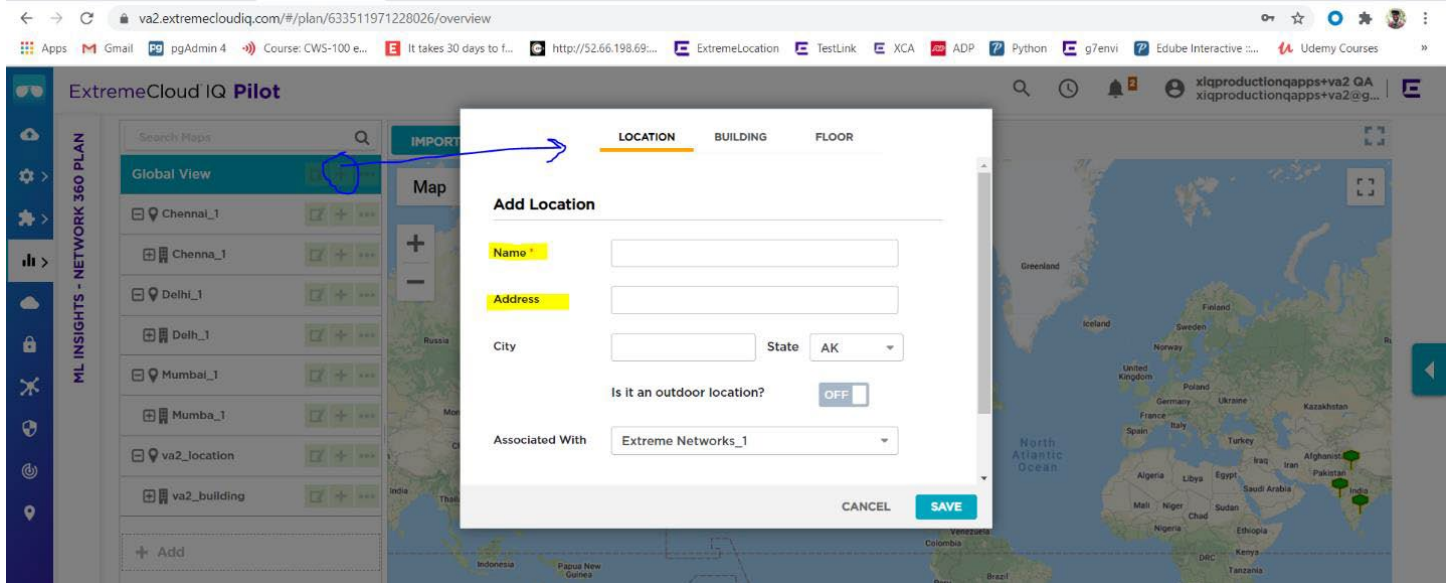
1. Log in to ExtremeCloud IQ.



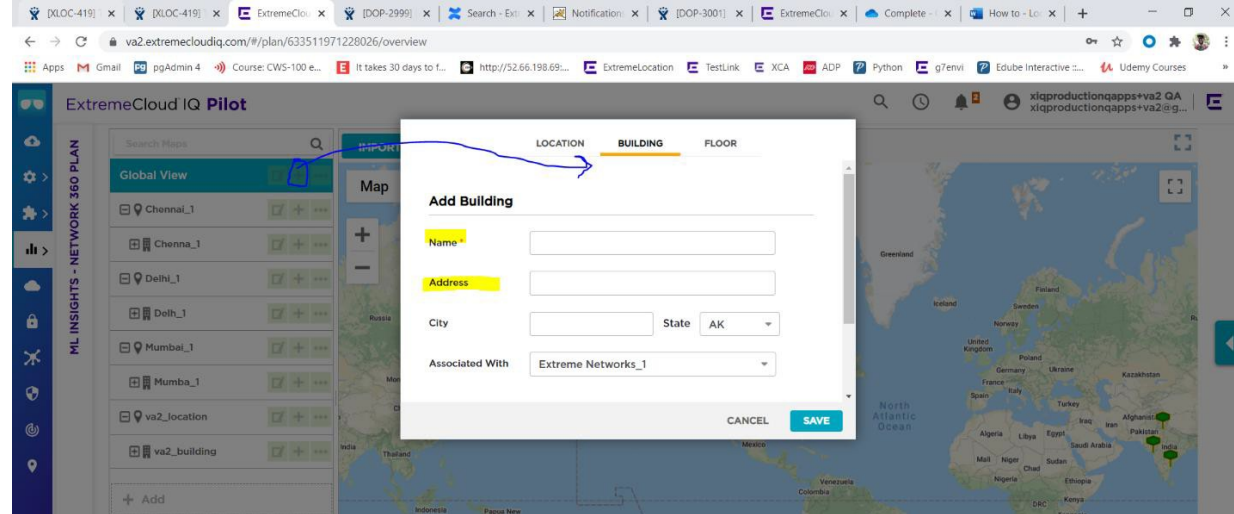
2. In ExtremeCloud IQ, select ML Insights > Add network plan > Create Location, Building and Floor.



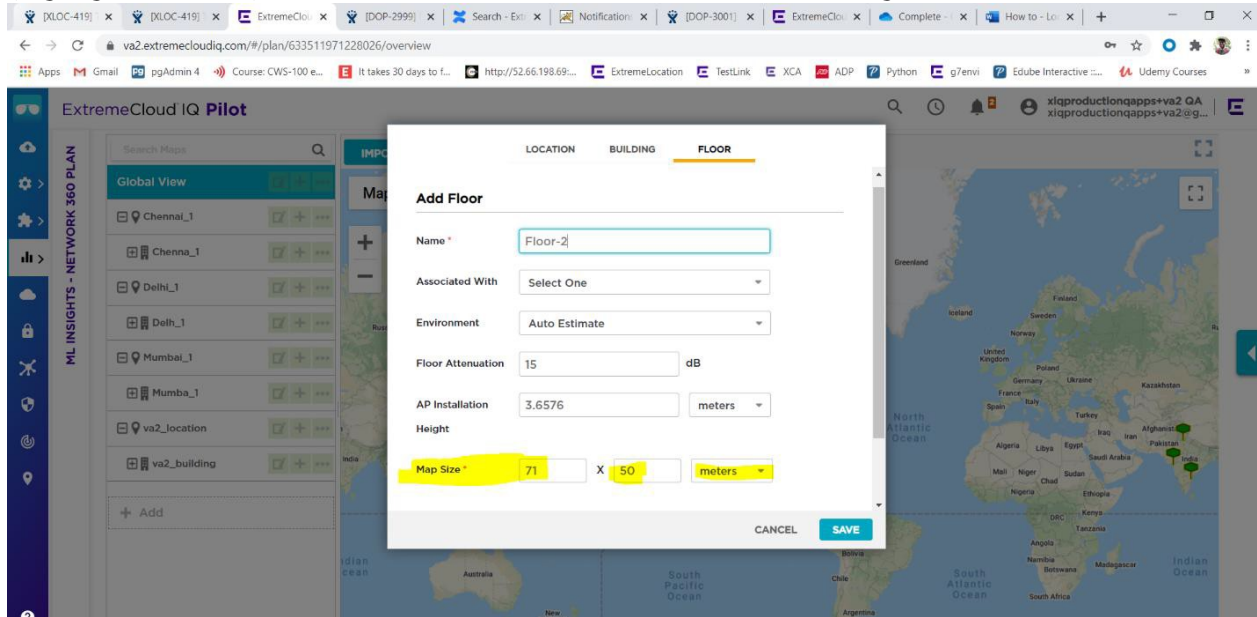
3. In Global view, create a location by selecting **Add icon > Location**. Fill in the mandatory fields (**Name** and **Address**, highlighted below) and select **Save**.



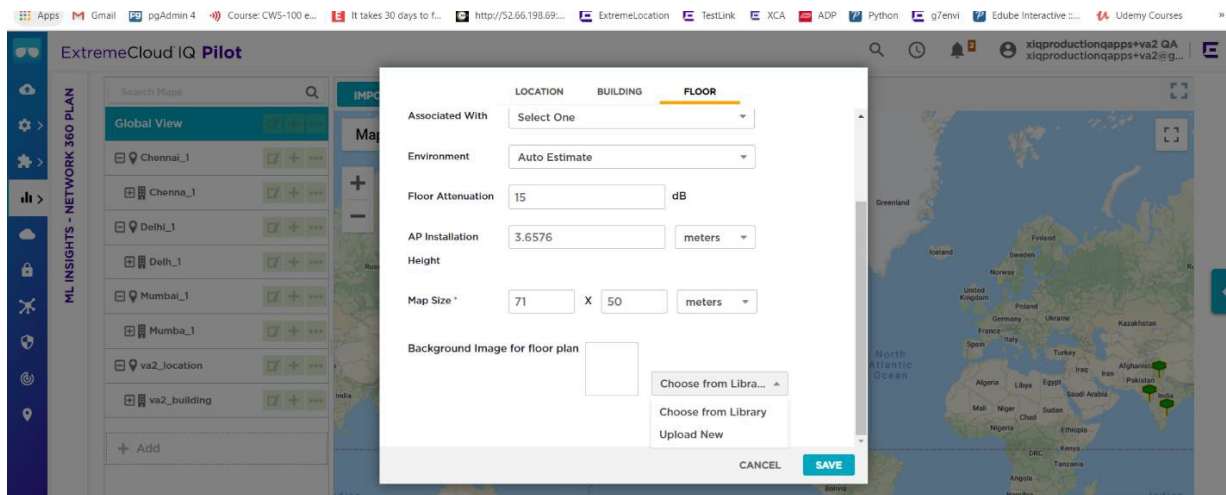
4. Create a building by selecting **Add icon > Building**. Fill in the mandatory fields (**Name** and **Address**, highlighted below) and select **Save**.



5. Create a floor by selecting **Add icon > Floor**. Specify a map size, for example 71 x 50 meters (highlighted below). Then scroll down to reveal the rest of the dialog.



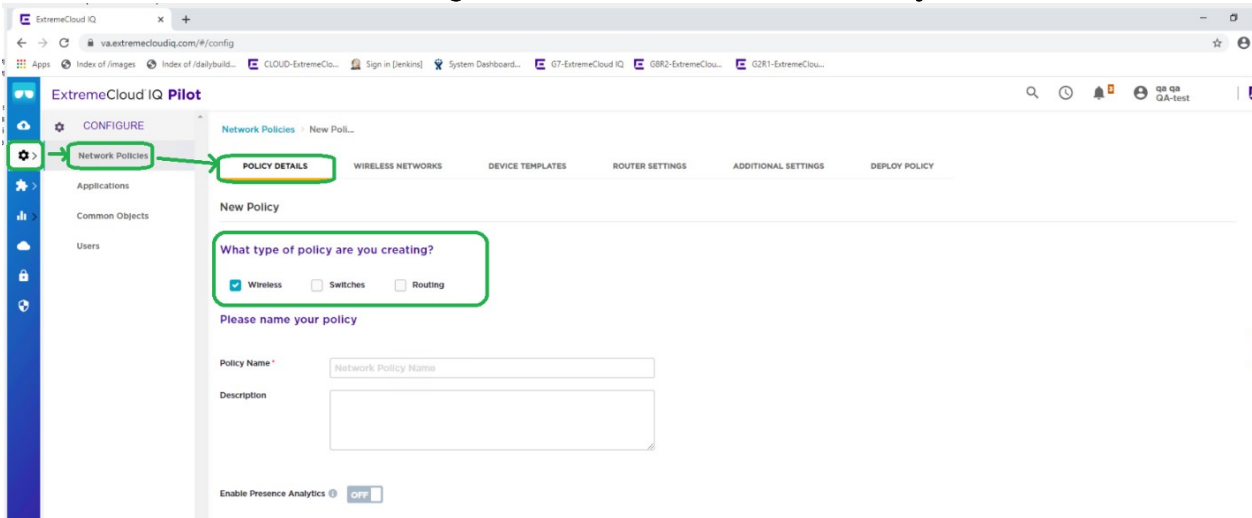
6. Attach the floor plan, either by uploading a new floor plan or choosing a floor plan that is already in the library. When you have attached the floor plan, select **Save**.



Setup Procedure 2: Create a Network Policy

Finish the setup by creating a Network Policy. Follow these steps:

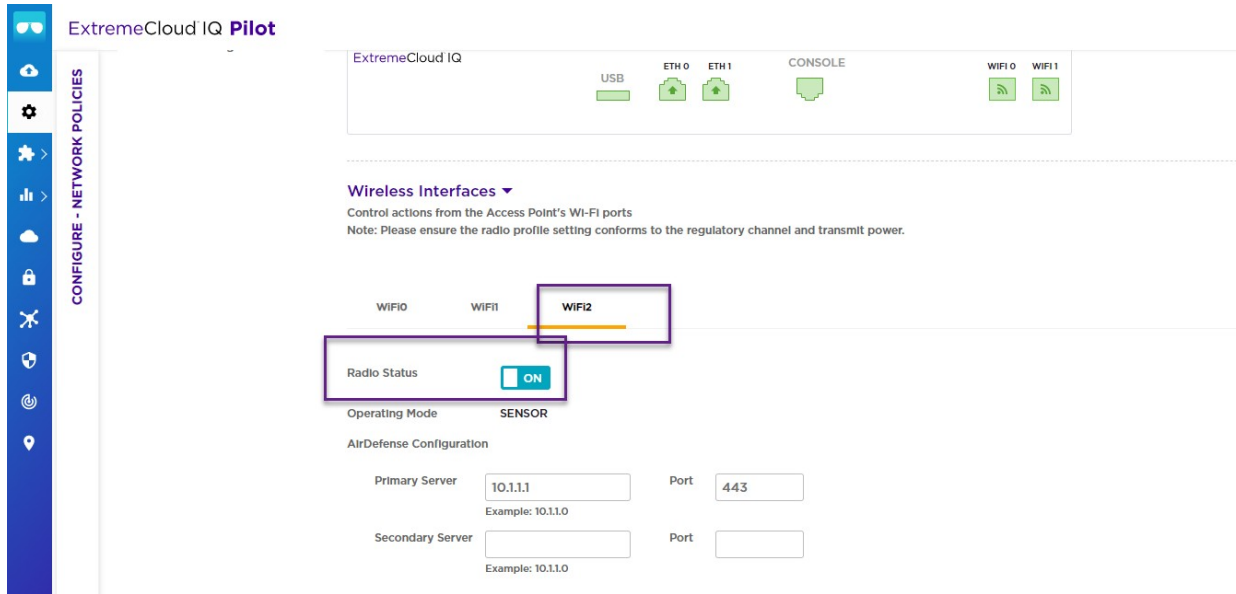
1. In ExtremeCloud IQ, select **Manage Devices > Create Network Policy**.



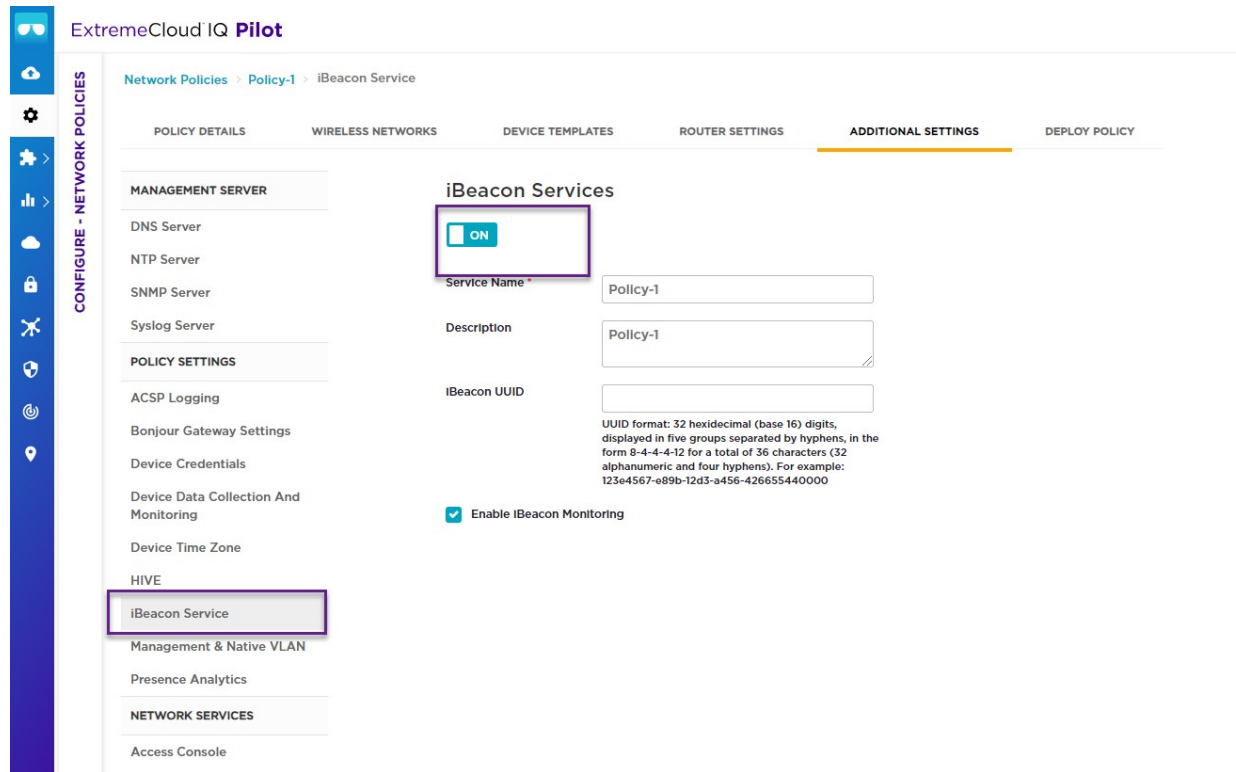
2. Update the corresponding device template as follows.

Note: This configuration is for tri-radio APs. Dual-radio APs automatically start sending as soon as presence is enabled.

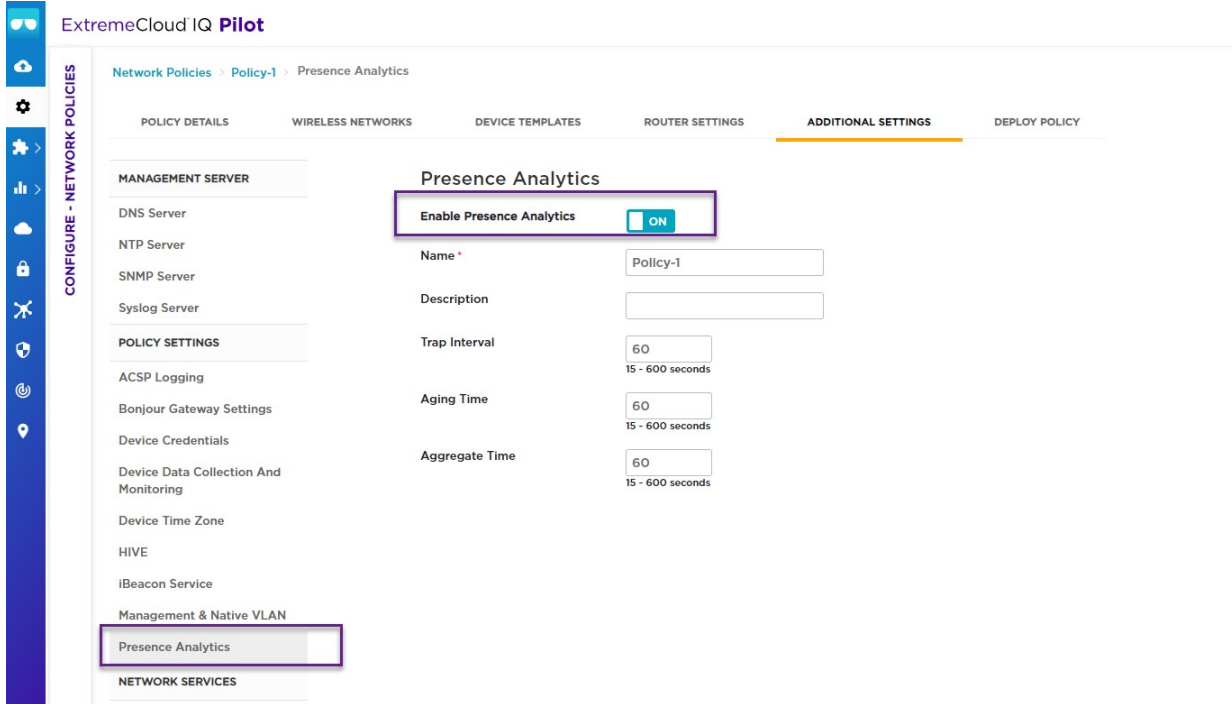
- Enable wifi0 and Wifi1 as Client access mode.
- Enable Wifi2.
- Save the device template.



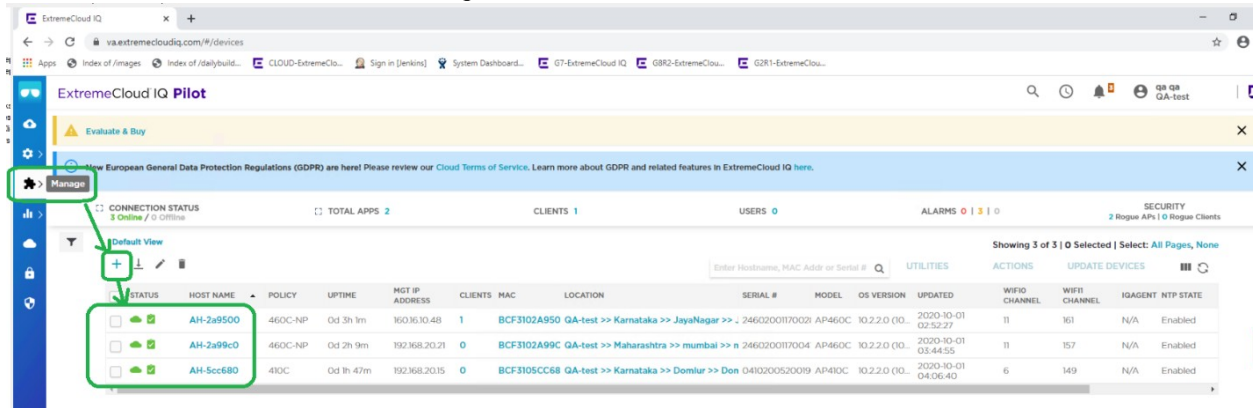
3. In **Additional Settings**, enable iBeacon Services.



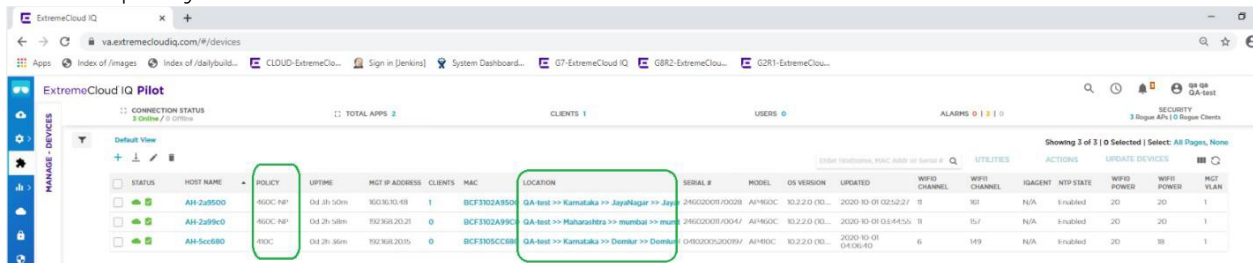
4. In Additional Settings, enable Presence Analytics.



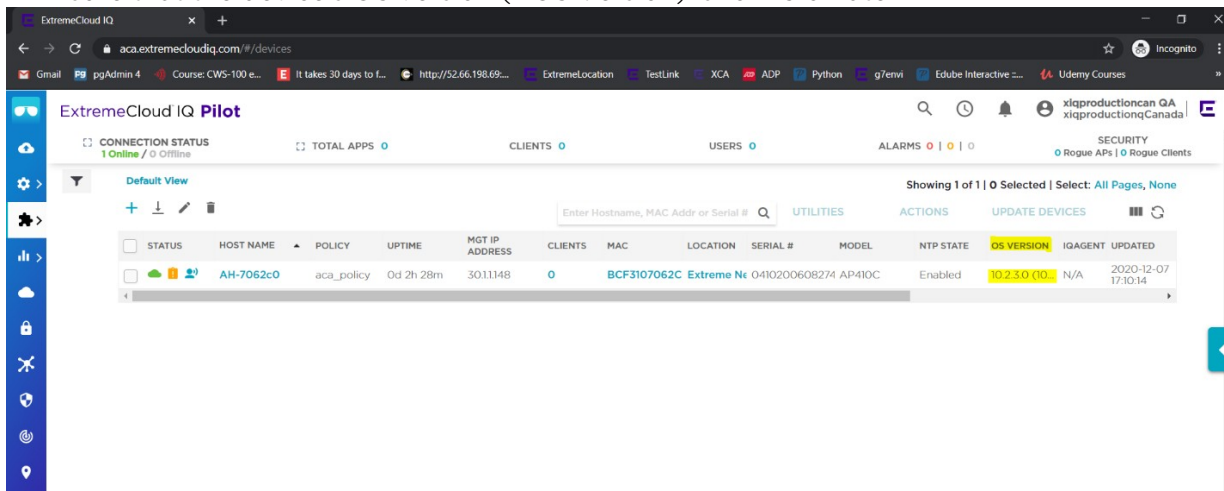
5. In ExtremeCloud IQ, select Manage Devices and onboard AP460C/AP410C.



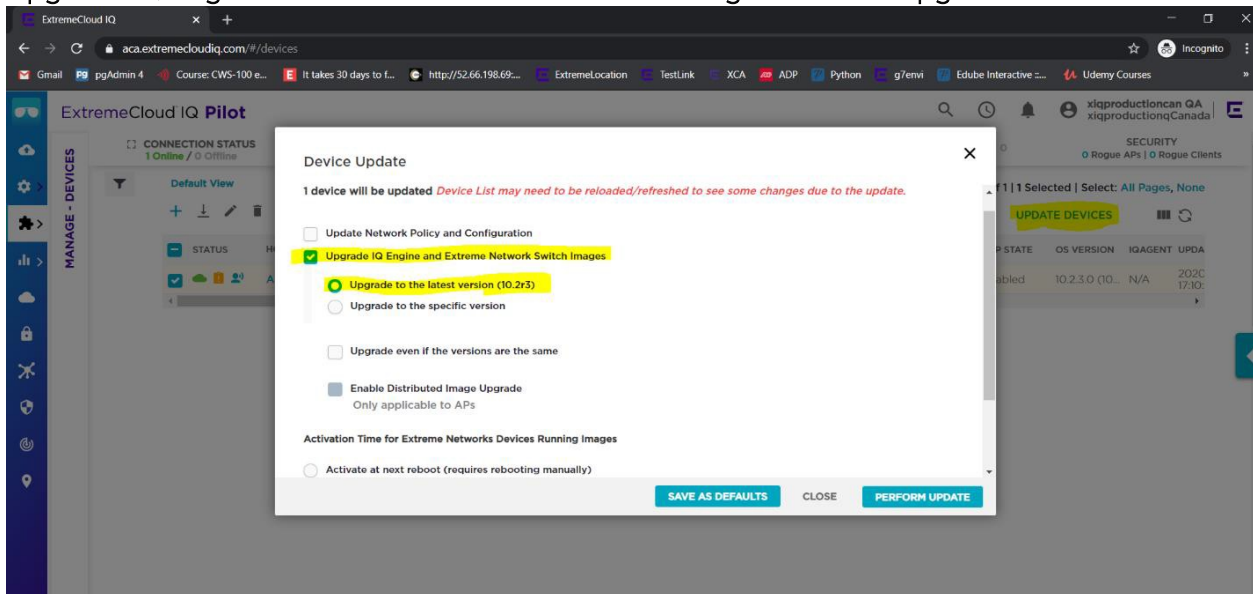
6. When the device is reported online, assign the location you created earlier . Then assign the newly-created network policy.



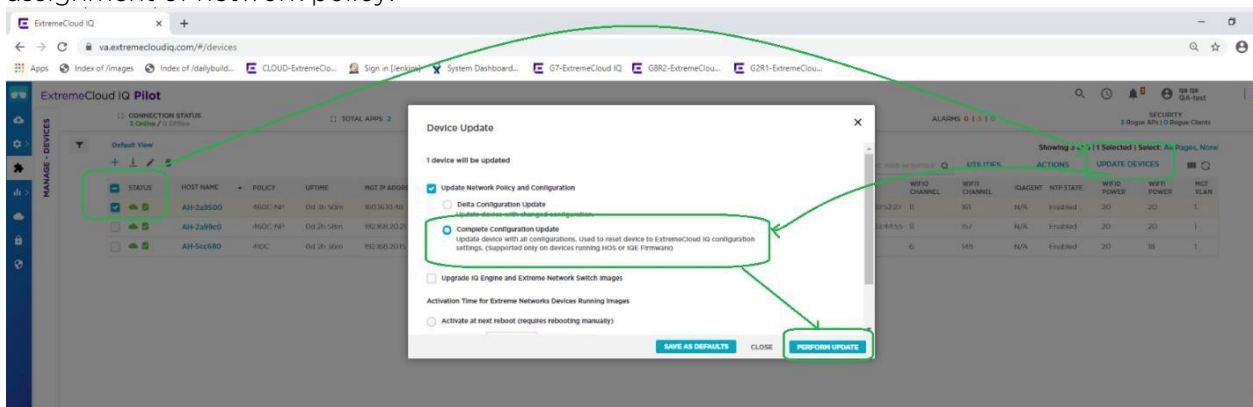
7. Ensure that the device's OS version (HOS Version) is 10.2r3 or later.



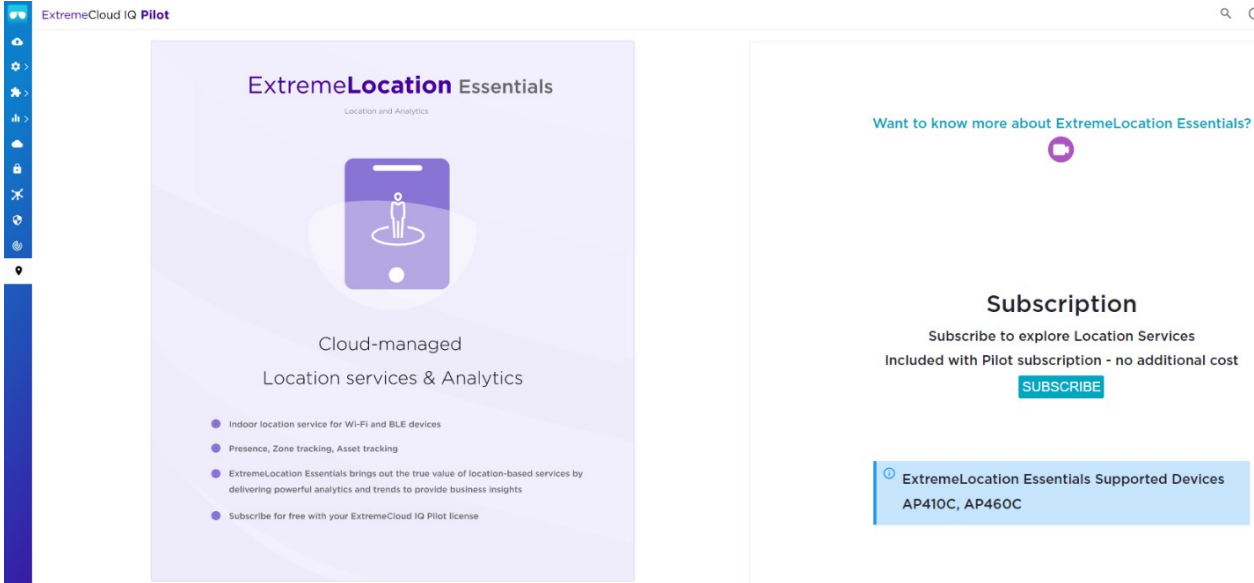
If necessary, upgrade the device's HOS version to 10.2r3 or later: Select **Update Device**, and then select **Upgrade IQ Engine and Extreme Network Switch images > Select Upgrade to the latest version**



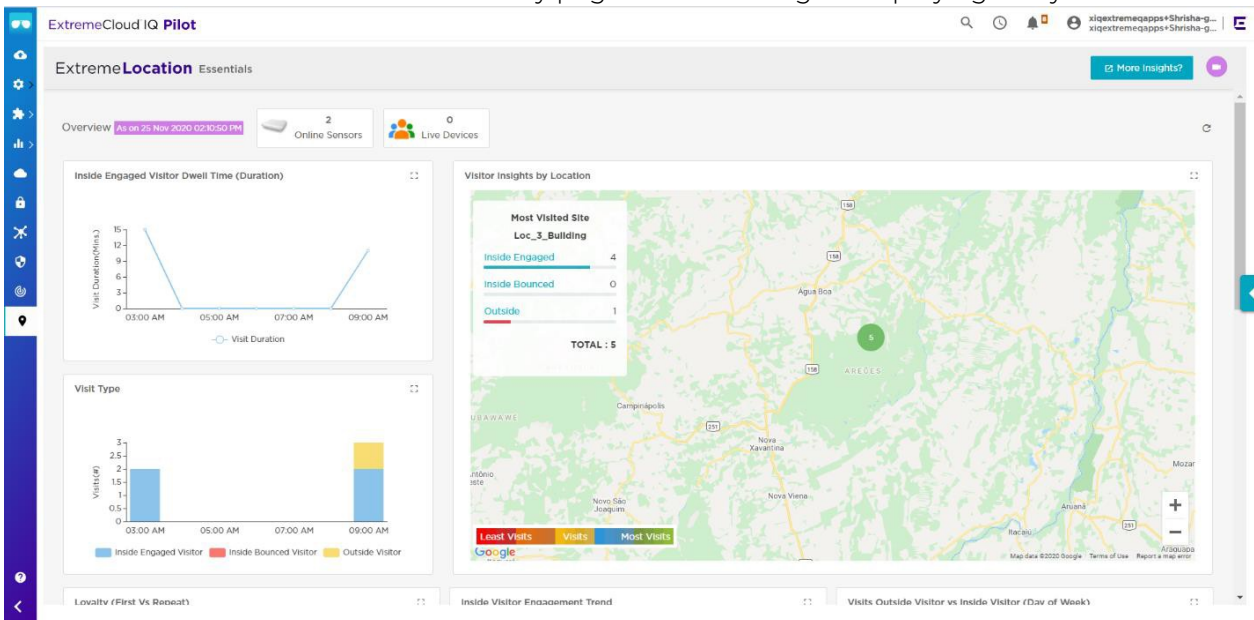
8. Perform a complete CONFIG PUSH on the onboarded AP460C/AP410C after the very first onboarding and assignment of network policy.



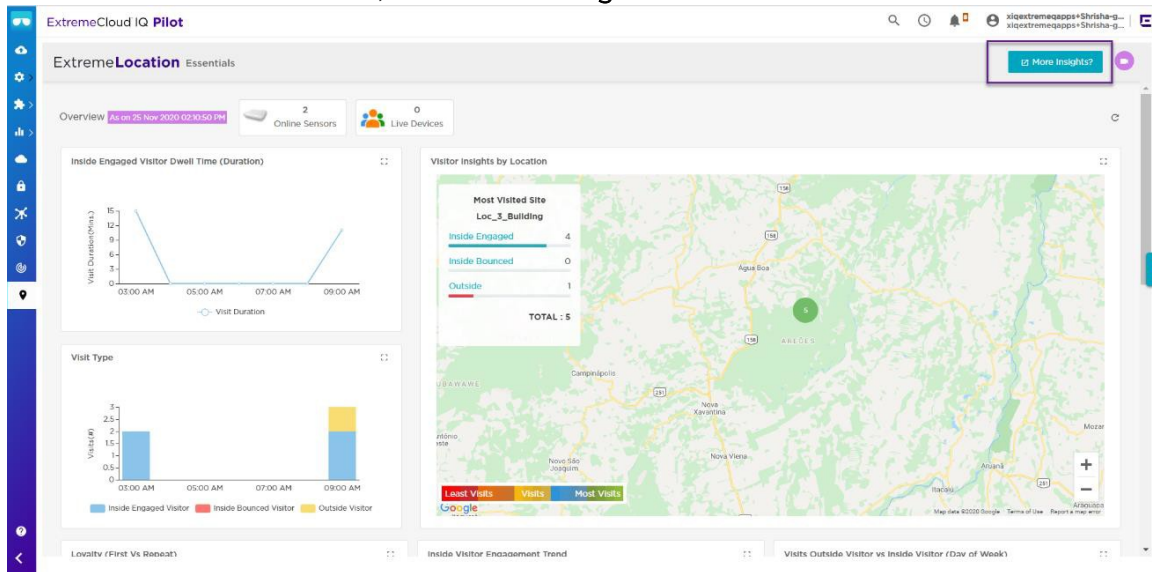
9. Launch the ExtremeLocation Essentials app by selecting the Location icon in the left panel and then selecting **Subscribe**.



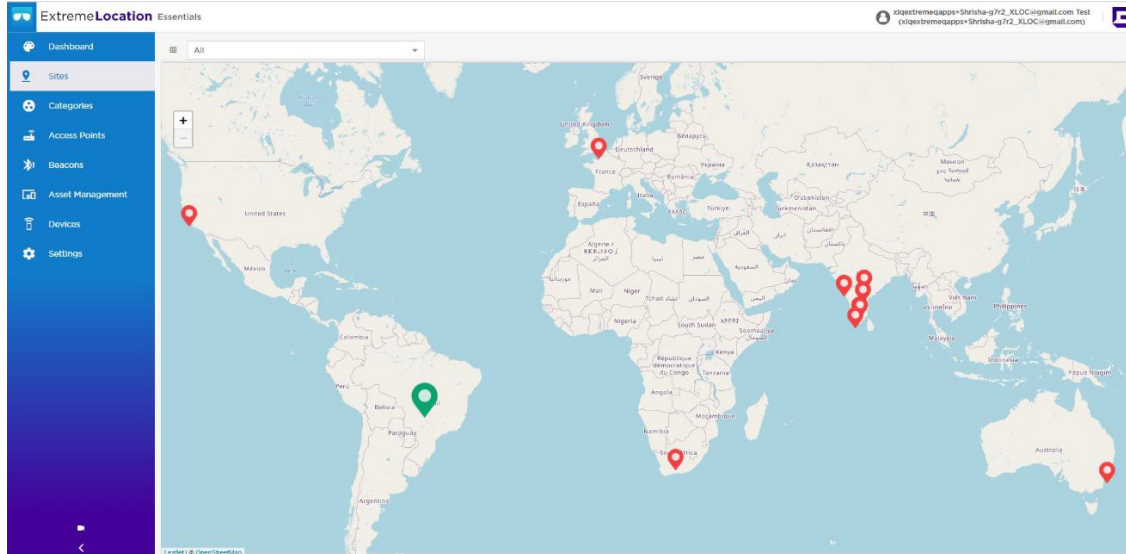
The ExtremeLocation Essentials Summary page loads and begins displaying analytics.



10. To view additional details, select **More Insights**.



Use the additional options for configuration, dashboards and monitoring.



End of document