



# Extreme Networks Universal Compute Platform Appliance 2130C

## Installation Guide: Setup, Configuration, and Compliance

9038123-00 Rev AA  
February 2025



Copyright © 2025 Extreme Networks, Inc. All rights reserved.

## Legal Notice

Extreme Networks, Inc. reserves the right to make changes in specifications and other information contained in this document and its website without prior notice. The reader should in all cases consult representatives of Extreme Networks to determine whether any such changes have been made.

The hardware, firmware, software or any specifications described or referred to in this document are subject to change without notice.

## Trademarks

Extreme Networks and the Extreme Networks logo are trademarks or registered trademarks of Extreme Networks, Inc. in the United States and/or other countries.

All other names (including any product names) mentioned in this document are the property of their respective owners and may be trademarks or registered trademarks of their respective companies/owners.

For additional information on Extreme Networks trademarks, see: <https://www.extremenetworks.com/about-extreme-networks/company/legal/trademarks>

## Open Source Declarations

Some software files have been licensed under certain open source or third-party licenses.

End-user license agreements and open source declarations can be found at: <https://www.extremenetworks.com/support/policies/open-source-declaration/>



# Table of Contents

---

Abstract.....	v
<b>Preface.....</b>	<b>6</b>
Text Conventions.....	6
Documentation and Training.....	7
Open Source Declarations.....	8
Training.....	8
Help and Support.....	8
Subscribe to Product Announcements.....	9
Send Feedback.....	9
<b>Overview.....</b>	<b>10</b>
Specifications.....	10
Physical Dimensions.....	10
Ports.....	11
LEDs.....	11
Input Rating.....	11
Power.....	11
Environmental Specifications.....	11
Front and Back Panel Information.....	12
Power Supply Unit LED.....	13
<b>Installation.....</b>	<b>14</b>
Installation Workflow.....	14
Verify Box Contents.....	15
Replace a Power Supply Unit.....	15
Replace the Fan.....	16
Mount the Appliance.....	17
Connect to a Power Source.....	17
<b>Configuration.....</b>	<b>18</b>
Configure the Management Interface from the Console Port.....	18
Configure the Management Interface from the Inter-Cluster-Connect Port.....	19
Connect the Data Ports.....	20
Install a Transceiver.....	21
Connect Cables to Transceiver Ports.....	21
Ethernet Ports LED Information.....	22
<b>Regulatory and Compliance.....</b>	<b>23</b>
Safety Guidelines.....	23
Battery Notice.....	24
Federal Communications Commission (FCC) Notice.....	24
Industry Canada, Class A.....	24
Conformité Européenne (CE) Notice.....	25

EMC Statement - Korea.....	25
Japan (VCCI) - Voluntary Control Council for Interference Class A ITE.....	25
BSMI Statement - Taiwan.....	25
CCC Statement - China.....	27
Supplement to Product Instructions.....	27
Hazardous Substances.....	27
European Waste Electrical and Electronic Equipment (WEEE) Notice.....	28
<b>Index.....</b>	<b>29</b>



# Abstract

---

The Extreme Networks Universal Compute Platform 2130C Installation Guide provides detailed procedures for setting up the 2130C appliance for medium deployments. Key features include front and back panel layouts with LED indicators, USB ports, and data ports supporting various GbE speeds. Installation instructions cover pre-installation checklists, rack mounting, power source connections, and network configurations, emphasizing the need for electrostatic discharge precautions and qualified personnel for installation. Network setup involves connecting through a console port using terminal emulators like PuTTY, with settings specified for serial connections. LED status indicators for RJ45 and SFP28 ports are explained for troubleshooting. Regulatory compliance information includes FCC, Industry Canada, and European directives, ensuring adherence to safety and environmental standards. The guide also provides support resources, including Extreme Networks' portals for technical assistance and product updates.



# Preface

---

Read the following topics to learn about:

- The meanings of text formats used in this document.
- Where you can find additional information and help.
- How to reach us with questions and comments.



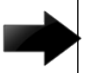


## Text Conventions

---

Unless otherwise noted, information in this document applies to all supported environments for the products in question. Exceptions, like command keywords associated with a specific software version, are identified in the text.

When a feature, function, or operation pertains to a specific hardware product, the product name is used. When features, functions, and operations are the same across an entire product family, such as Extreme Networks switches or SLX routers, the product is referred to as *the switch* or *the router*.

**Table 1: Notes and warnings**

Icon	Notice type	Alerts you to...
	Tip	Helpful tips and notices for using the product
	Note	Useful information or instructions
	Important	Important features or instructions
	Caution	Risk of personal injury, system damage, or loss of data
	Warning	Risk of severe personal injury

**Table 2: Text**

Convention	Description
screen displays	This typeface indicates command syntax, or represents information as it is displayed on the screen.
The words <i>enter</i> and <i>type</i>	When you see the word <i>enter</i> in this guide, you must type something, and then press the Return or Enter key. Do not press the Return or Enter key when an instruction simply says <i>type</i> .
<b>Key</b> names	Key names are written in boldface, for example <b>Ctrl</b> or <b>Esc</b> . If you must press two or more keys simultaneously, the key names are linked with a plus sign (+). Example: Press <b>Ctrl+Alt+Del</b>
<i>Words in italicized type</i>	Italics emphasize a point or denote new terms at the place where they are defined in the text. Italics are also used when referring to publication titles.
<b>NEW!</b>	New information. In a PDF, this is searchable text.

**Table 3: Command syntax**

Convention	Description
<b>bold</b> text	Bold text indicates command names, keywords, and command options.
<i>italic</i> text	Italic text indicates variable content.
[ ]	Syntax components displayed within square brackets are optional. Default responses to system prompts are enclosed in square brackets.
{ <b>x</b>   <b>y</b>   <b>z</b> }	A choice of required parameters is enclosed in curly brackets separated by vertical bars. You must select one of the options.
<b>x</b>   <b>y</b>	A vertical bar separates mutually exclusive elements.
< >	Nonprinting characters, such as passwords, are enclosed in angle brackets.
...	Repeat the previous element, for example, <i>member[member...]</i> .
\	In command examples, the backslash indicates a “soft” line break. When a backslash separates two lines of a command input, enter the entire command at the prompt without the backslash.

## Documentation and Training

Find Extreme Networks product information at the following locations:

[Current Product Documentation](#)

[Release Notes](#)

[Hardware and Software Compatibility](#) for Extreme Networks products

[Extreme Optics Compatibility](#)

[Other Resources](#) such as articles, white papers, and case studies

## Open Source Declarations

Some software files have been licensed under certain open source licenses. Information is available on the [Open Source Declaration](#) page.

## Training

Extreme Networks offers product training courses, both online and in person, as well as specialized certifications. For details, visit the [Extreme Networks Training](#) page.

## Help and Support

---

If you require assistance, contact Extreme Networks using one of the following methods:

### [Extreme Portal](#)

Search the GTAC (Global Technical Assistance Center) knowledge base; manage support cases and service contracts; download software; and obtain product licensing, training, and certifications.

### [The Hub](#)

A forum for Extreme Networks customers to connect with one another, answer questions, and share ideas and feedback. This community is monitored by Extreme Networks employees, but is not intended to replace specific guidance from GTAC.

### [Call GTAC](#)

For immediate support: (800) 998 2408 (toll-free in U.S. and Canada) or 1 (408) 579 2800. For the support phone number in your country, visit [www.extremenetworks.com/support/contact](http://www.extremenetworks.com/support/contact).

Before contacting Extreme Networks for technical support, have the following information ready:

- Your Extreme Networks service contract number, or serial numbers for all involved Extreme Networks products
- A description of the failure
- A description of any actions already taken to resolve the problem
- A description of your network environment (such as layout, cable type, other relevant environmental information)
- Network load at the time of trouble (if known)
- The device history (for example, if you have returned the device before, or if this is a recurring problem)
- Any related RMA (Return Material Authorization) numbers



## Subscribe to Product Announcements

You can subscribe to email notifications for product and software release announcements, Field Notices, and Vulnerability Notices.

1. Go to [The Hub](#).
2. In the list of categories, expand the **Product Announcements** list.
3. Select a product for which you would like to receive notifications.
4. Select **Subscribe**.
5. To select additional products, return to the **Product Announcements** list and repeat steps 3 and 4.

You can modify your product selections or unsubscribe at any time.

## Send Feedback

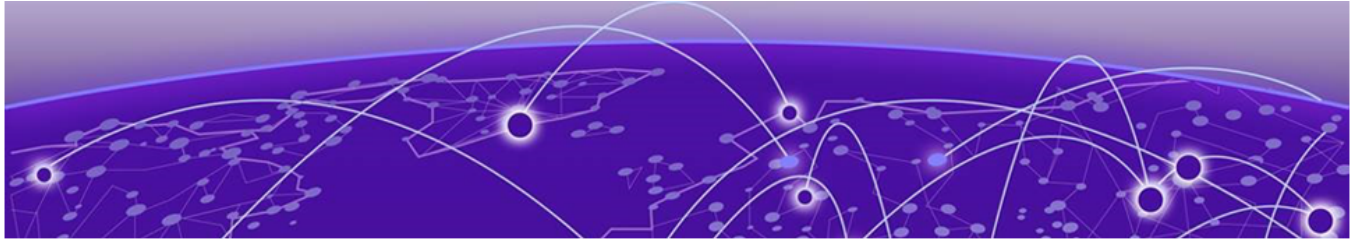
---

The User Enablement team at Extreme Networks has made every effort to ensure that this document is accurate, complete, and easy to use. We strive to improve our documentation to help you in your work, so we want to hear from you. We welcome all feedback, but we especially want to know about:

- Content errors, or confusing or conflicting information.
- Improvements that would help you find relevant information.
- Broken links or usability issues.

To send feedback, email us at <https://www.extremenetworks.com/documentation-feedback/>.

Provide as much detail as possible including the publication title, topic heading, and page number (if applicable), along with your comments and suggestions for improvement.



# Overview

---

[Specifications](#) on page 10

[Front and Back Panel Information](#) on page 12

[Power Supply Unit LED](#) on page 13



The Extreme Networks 2130C appliance is an Universal Compute Platform cloud-based network appliance for medium deployments, such as businesses, clinics, or schools. It fits a 19-inch rack and features four data ports, four USB ports, and two Inter-Cluster-Connect (ICC) ports.

The 2130C is designed to host ExtremeCloud Edge - Self Orchestrated applications.



## Important

Only qualified personnel must perform installation procedures.



## Caution

To minimize Electrostatic Discharge (ESD) damage to the devices, you must wear an anti-static wrist strap while performing the installation procedures.

## Specifications

---

The following sections show the physical and environmental specifications for the 2130C. You can use this information when you plan your installation.

### Physical Dimensions

The 2130C has the following dimensions and weight:

- Dimensions: 437.00 mm x 398.78 mm x 43 mm (17.20 in. x 15.70 in. x 1.69 in.)
- Weight: 8.719 kg (19.2 lbs)

## Ports

The 2130C has the following ports:

- Two 10 Gb Ethernet or Inter-Cluster-Connect ports
- One DB9 Console port
- Two USB 2.0 ports
- Two USB 3.2 ports
- Two 10 Gb RJ45 Ethernet ports
- Two 25 Gb SFP28 Ethernet ports

## LEDs

The 2130C has the following status LEDs on the front of the chassis:

- Information LED
- ICC2 LED
- ICC1 LED
- HDD LED
- Power LED

For more information, see [Front and Back Panel Information](#).

## Input Rating

The 2130C has the following nominal power usage:

- 100-120/200-240VAC, 50/60Hz, 3.2/1.6A per PSU

## Power

The 2130C power specifications are as follows:

- Redundant Power Supplies: Two (2) pre-installed 800W AC power supplies
- 100-240 volts

The power button is located in front of the chassis.

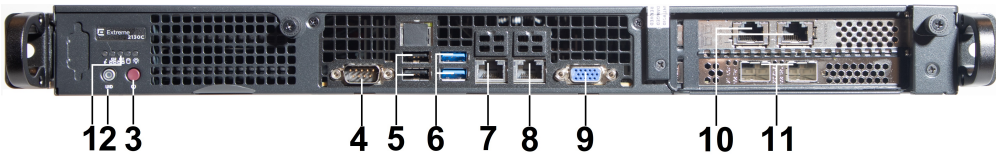
## Environmental Specifications

The 2130C has the following environmental specifications:

- Operating: 0 °C to 40 °C (32 °F to 104 °F)
- Storage: -40 °C to 70 °C (-40 °F to 158 °F)
- Humidity: 8 % to 90 % operating (non-condensing); 5 % to 95 % non-operating (non-condensing)

## Front and Back Panel Information

Use the information in the following sections to identify the hardware features located on the front and rear panel.

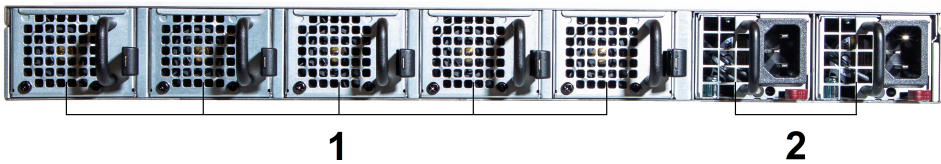


**Figure 1: 2130C Front Panel Layout**

The 2130C has the following hardware features located on the front panel.

**Table 4: 2130C Front Panel**

Callout	Description
1.	Information LED, ICC2 LED, ICC1 LED, HDD LED, and Power LED
2.	UID
3.	Power On
4.	DB9 Console port
5.	USB 2.0 ports
6.	USB 3.2 ports
7.	Inter-Cluster-Connect port 1
8.	Inter-Cluster-Connect port 2
9.	VGA port (do not use)
10.	Data port 1 and 2, 1/10 GbE RJ45
11.	Data port 3 and 4, 1/10/25 GbE SFP28



**Figure 2: Back Panel Layout**

The 2130C has the following hardware features located on the back panel.

**Table 5: 2130C Back Panel**

Callout	Description
1	Cooling fans
2	Back-up power supply units

## Power Supply Unit LED

The Power Supply Units (PSUs) are located at the back of the appliance.

Each power supply has a single bi-color LED to indicate power supply unit status. Use the information in the following table to interpret the health of the power supply unit and the redundant power supply unit, if one is installed.

**Table 6: Power Supply Status LED Indicator Patterns**

Power Supply Condition	LED Pattern
Output on and OK.	Green
No AC power to all power supplies.	Off
AC present / Only 12VSB on (power supply is off) or power supply in cold redundant state.	1Hz Blinking Green
AC power cord unplugged or AC power lost. With a second power supply in parallel still with AC input power.	Amber
Power supply warning events where power supply continues to operate — high temp, high power, high current, or slow fan.	1Hz Blinking Amber
Power supply critical event causing a shutdown, failure, OCP, OVP, or fan fail.	Amber



# Installation

---

- [Installation Workflow](#) on page 14
- [Verify Box Contents](#) on page 15
- [Replace a Power Supply Unit](#) on page 15
- [Replace the Fan](#) on page 16
- [Mount the Appliance](#) on page 17
- [Connect to a Power Source](#) on page 17

Use the information in the following sections to install the 2130C appliance.

## Installation Workflow

---

The following table lists the installation tasks. Use this information as a guide when you install the 2130C.



### Note

Review the [Safety Guidelines](#) before you install the appliance.

**Table 7: 2130C Installation Workflow**

Step	Action	Purpose
1.	<a href="#">Verify the box contents.</a>	Confirm that your appliance arrived complete.
2.	<a href="#">Install the Power Supply Unit.</a>	The power supply unit converts AC into DC.
3.	<a href="#">Mount the appliance in a rack or on a tabletop or shelf.</a>	Install the appliance in a permanent location.
4.	<a href="#">Connect a power supply.</a>	Connect the 2130C to a power source.
5.	Configure the appliance. Do one of the following: <ul style="list-style-type: none"><li>• <a href="#">Configure the Management Interface from the Console Port</a></li><li>• <a href="#">Configure the Management Interface from the Management Port</a></li></ul>	Configure the following settings: <ul style="list-style-type: none"><li>• Admin password</li><li>• Host attributes settings</li><li>• Time settings</li><li>• DNS settings</li><li>• Data plane settings</li></ul>

## Verify Box Contents

---

### About This Task

The 2130C ships with everything needed for a basic installation. Confirm that you have received the following items before you install your appliance.



#### Note

The power cord needs to be purchased separately for the respective country where you are deploying the device.

### Procedure

1. Confirm that the box contains the following items:
  - One 2130C Regulatory and Compliance guide. The guide has a QR code to access the product documentation.
  - One 2130C unit.
  - Two (2) pre-installed redundant power supply units (PSU).
  - One rail-mount kit.
  - Four (4) rubber feet.
  - One (1) bag of rail mount screws.
2. Inspect the appliance for any physical damage.

Contact [Extreme Networks Support Portal](#) if there is any damage.

## Replace a Power Supply Unit

---

### About This Task

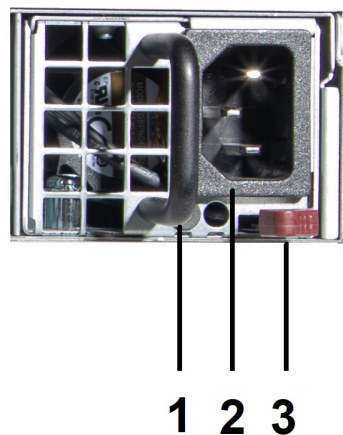
The appliance ships with two pre-installed Power Supply Units (PSUs), which you can replace as needed.



#### Note

The appliance requires one PSU to operate normally. Remove and replace only one power supply at a time in a system that is powered **On**.

With two Power Supply Units installed, the power load is distributed across both PSUs to maximize efficiency. When you remove one unit with the system powered **On**, then the remaining unit picks up the power load.



**Figure 3: Redundant Power Supply Units**

**Table 8: Power Supply Unit Hardware**

Callout	Description
1	Handle
2	AC power supply unit
3	Latching tab

#### Procedure

1. Detach the power supply cord from the PSU.
2. Grasp the PSU handle and pull.
3. As you pull the PSU, push the latching tab outward to disengage the PSU.
4. Insert the new PSU unit into the PSU bay.
5. Push the new PSU until it locks in place.

The PSU slides easily into the opening, but there is some resistance about the last 1/2 inch.

6. Re-connect the power supply cord.
7. Confirm that the power supply unit LED is green.

For more information, see [Power Supply Unit LED](#)

## Replace the Fan

### Before You Begin

Have the replacement fan on hand so that you can complete the replacement quickly. The appliance overheats if it isn't cooled for an extended time.

The cooling fan is at the rear of the appliance.

### About This Task

To replace a cooling fan:



### Procedure

1. Push the latch to the left.
2. Gently slide the fan module out of the bay and set it aside.

The fan module is held in place with spring clips. As you pull, the clips disengage and the fan stops.

3. Carefully slide the replacement fan module into the bay.

As you push the fan module into the appliance, it snaps into place and automatically starts.

## Mount the Appliance

---

You can mount the appliance in a 19-inch rack using the rail mount kit included with the 2130C.



### Note

Wear an anti-static wrist strap when you handle the appliance to avoid damaging the device or the components.

You can also mount the appliance on a tabletop or shelf. Ensure at least 2.5 in. (6 cm) of clearance on all sides of the unit for proper ventilation.

## Connect to a Power Source

---

### About This Task

The power source is located in the back panel of the appliance and the power button is located in the front control panel. To connect the appliance to a power source:

### Procedure

1. Connect the two AC power cables to power supplies 1 and 2.  
These two power supplies combine to create an optional redundant power supply.
2. Plug the other end of the cables into grounded electrical outlets or to separate power sources such as an uninterruptible power supply (UPS) or a power distribution unit (PDU).

3. Power **On** the appliance.

The power button is on the front control panel.



# Configuration

---

[Configure the Management Interface from the Console Port](#) on page 18

[Configure the Management Interface from the Inter-Cluster-Connect Port](#) on page 19

[Connect the Data Ports](#) on page 20

Use the information in the following sections to configure the 2130C appliance.

## Configure the Management Interface from the Console Port

---

### Before You Begin

Obtain a laptop with PuTTY, TeraTerm, or another terminal emulator installed on it. If the laptop does not support RS232 interface, then obtain a USB to RS232 converter cable, which then connects to the Null Modem DB9 F-F (Female to Female) cable.

You also need the following information:

- Admin password
- Host attributes settings
- Time settings
- DNS settings
- Data plane settings

### About This Task

You can configure the 2130C appliance from the appliance console port if you have physical access to it. Configuration is asynchronous, but you can see the boot up process.

The console port is on the appliance's front panel. See [Front and Back Panel Information](#).

### Procedure

1. Connect the laptop serial port to the console port.

If the laptop does not support the RS232 interface, then obtain a USB to RS232 converter cable, which then connects to the Null Modem DB9 F-F (Female to Female) cable.

2. Connect to the serial port connection with a terminal emulator.  
Ensure that your serial connection is set properly:
  - 115200 baud
  - 8 data bits
  - 1 stop bit
  - Parity none
  - Flow control none
3. Enter the password in the console session when prompted.  
The default user is **admin** and the default password is **abc123**.
4. Enter the following information when prompted by the configuration script:
  - Admin Password
  - Host Attributes Settings
  - Time Settings
  - DNS Settings
  - Data Plane Settings
5. Type **Yes** at the end of each session and move to the next session.  
If you type **No**, the session configuration options are repeated.
6. Press **Enter**.  
The **Appliance Post Installation Configuration Menu** opens after the last session is applied.
7. Do one of the following:  
Enter **A** to apply settings and exit.  
Enter a number to repeat the setup.
8. Connect to a port that had management access enabled during the CLI Wizard Setup.
9. Open a web browser and enter `https://Your_Mgmt_Ipaddress:5825` into the address bar.  
The Universal Compute Platform login screen opens.
10. Enter **admin** and the credentials that were created when setting up the installation wizard.

**Note**

An installation wizard is available to help configure the 2130C for new deployments.

## Configure the Management Interface from the Inter-Cluster-Connect Port

### Before You Begin

You will need a laptop.

### About This Task

You can retain the default IP address of the appliance Inter-Cluster-Connect (ICC) interface if you do not connect the appliance to your enterprise network. If you connect the appliance to your network, follow these steps:

#### Procedure

1. Connect a laptop to the appliance's ICC1 port.
2. Configure the Ethernet port of the laptop.  
Use a statically assigned unused IP address in the **192.168.10.0/24** subnet.
3. Enter **https://192.168.10.1:5825** into a web browser address bar.  
**192.168.10.1** is the default IP address on the appliance ICC1 port.  
The Universal Compute Platform Login screen displays.
4. Log on to Universal Compute Platform.  
The default user name is **admin** and the default password is **abc123**.
5. Complete the installation to configure the 2130C appliance for new deployments.
6. Disconnect your laptop from the appliance.
7. Connect the appliance ICC port to the enterprise Ethernet LAN.
8. Log on to the Universal Compute Platform.



#### Note

The system is now visible to the enterprise network. Refer to the Universal Compute Platform User Guide on the [Extreme Networks Documentation Site](#) for more information.

## Connect the Data Ports

### About This Task

The 2130C data ports 1 and 2 are 1/10 GbE RJ45 ports. Ensure that the device to be connected at the other end of the segment is powered on.

To connect a twisted pair cabling:

#### Procedure

1. Connect the twisted pair segment to the appliance by inserting the RJ45 connector on the twisted pair segment into the desired RJ45 port.
2. Verify that a link exists by checking that the Activity Link LED is on (solid green or blinking green). If the Activity Link LED is off, perform the following steps until it is on:
  - a. Verify that the cabling being used is Category 5 or better (Category 6 or better for 10Gbps connection). The cable should have an impedance between 85 and 111 ohms and a maximum length of 328 feet (100 meters).
  - b. Verify that the device at the other end of the twisted pair segment is turned on and is properly connected to the segment.
  - c. Verify that the RJ45 connectors on the twisted pair segment have the proper pinouts, and check the cable for continuity.

3. If a link is not established, contact Extreme Networks.

## Install a Transceiver

### About This Task

Data ports 3 and 4 provide SFP28 ports that can support 1, 10, and 25Gbps transceivers. Refer to the [transceivers and cables datasheet](#) for a list of pluggable transceivers supported for 2130C.

To install a transceiver:

### Procedure

1. Attach an antistatic wrist strap to your wrist and remove the transceiver from its packaging.



#### Note

If there is a protective dust cover on the transceiver connector, do not remove it at this time.

2. Hold the transceiver so that the connector will seat properly.
3. Align the transceiver with the port slot.
4. Push the transceiver into the port slot until it clicks and locks into place.

## Connect Cables to Transceiver Ports

### About This Task

Connect the cables after you have installed the transceiver.

### Procedure

1. Remove the protective covers from the transceiver and from the connectors on each end of the cable.
2. Insert the cable connector into the transceiver connector until it clicks into place.
3. Plug the other end of the cable into the appropriate port on the other device.

Some fiber-optic cables can be terminated at the other end with two separate connectors, one for each fiber-optic strand. In this case, ensure that the transmit fiber-optic strand from the appliance is connected to the receive port of the other device, and the receive fiber-optic strand on the appliance is connected to the transmit port of the other device.

4. If a transceiver port is unused, cover the port using a dust cover.



#### Warning

Fiber-optic transceivers use Class 1 lasers. Do not use optical instruments to view the laser output. The use of optical instruments to view laser output increases eye hazard. When viewing the output optical port, power must be removed from the network adapter.

## Ethernet Ports LED Information

The Inter-Cluster-Connect ports and data ports 1 and 2 include two LEDs located on either side of the port. For data ports 3 and 4 both LEDs are on the left side of the port. Use the information in the following tables to interpret the LED patterns.

**Table 9: RJ45 Port LEDs (Inter-Cluster-Connect 1 and 2)**

LED type	LED pattern	Status
Network speed (left)	Off	100 Mbps
	Solid amber	1,000 Mbps (1 Gbps)
	Solid green	10,000 Mbps (10 Gbps)
Link activity (right)	Off	No link
	Solid green	Active link
	Blinking green	Data traffic activity

**Table 10: RJ45 Port LEDs (Data Ports 1 and 2)**

LED type	LED pattern	Status
Network speed (right)	Solid amber	1,000 Mbps (1 Gbps)
	Solid green	10,000 Mbps (10 Gbps)
Link activity (left)	Off	No link
	Solid green	Active link
	Blinking green	Data traffic activity

**Table 11: SFP28 Port LEDs (Data Ports 3 and 4)**

LED type	LED pattern	Status
Network speed (right)	Solid amber	Less than 25,000 Mbps (25 Gbps)
	Solid green	25,000 Mbps (25 Gbps)
Link activity (left)	Off	No link
	Solid green	Active link
	Blinking green	Data traffic activity



# Regulatory and Compliance

---

[Safety Guidelines](#) on page 23

[Battery Notice](#) on page 24

[Federal Communications Commission \(FCC\) Notice](#) on page 24

[Industry Canada, Class A](#) on page 24

[Conformité Européenne \(CE\) Notice](#) on page 25

[EMC Statement - Korea](#) on page 25

[Japan \(VCCI\) - Voluntary Control Council for Interference Class A ITE](#) on page 25

[BSMI Statement - Taiwan](#) on page 25

[CCC Statement - China](#) on page 27

[Supplement to Product Instructions](#) on page 27

[Hazardous Substances](#) on page 27

[European Waste Electrical and Electronic Equipment \(WEEE\) Notice](#) on page 28

The following sections detail the regulatory information for the 2130C appliance.

## Safety Guidelines

---

Learn about the safety guidelines that are intended to protect your personal safety and prevent damage to the equipment.



### Important

Only qualified personnel must perform installation procedures. Within the context of the safety notes in this documentation, qualified persons are defined as persons who are authorized to commission grounding, and label devices, systems, and circuits in accordance with established safety practices and standards. A qualified person understands the requirements and risks involved with installing the electrical equipment in accordance with national codes.

## Battery Notice

---



### Warning

This product contains a battery used to maintain product information. If the battery should need replacement it must be replaced by Service Personnel. Please contact Technical Support for assistance.

Risk of explosion if battery is replaced by an incorrect type. Dispose of expended battery in accordance with local disposal regulations.

**Attention:** Ce produit renferme une pile servant à conserver les renseignements sur le produit. Le cas échéant, faites remplacer la pile par le personnel du service de réparation. Veuillez communiquer avec l'assistance technique pour du soutien.

Il y a risque d'explosion si la pile est remplacée par un type de pile incorrect. Éliminez les piles usées en conformité aux règlements locaux d'élimination des piles.

## Federal Communications Commission (FCC) Notice

---

This product has been tested and found to comply with the limits for a class A digital device, pursuant to Part 15 of the FCC rules. These limits are designed to provide reasonable protection against harmful interference when the equipment is operated in a commercial environment. This product uses, generates, and can radiate radio frequency energy and if not installed and used in accordance with the manufacturer's instruction manual, may cause harmful interference to radio communications. Operation of this product in a residential area is likely to cause harmful interference, in which case you will be required to correct the interference at your own expense.

This device complies with Part 15 of the FCC rules. Operation is subject to the following two conditions: (1) this device may not cause harmful interference, and (2) this device must accept any interference received, including interference that may cause undesired operation. Any changes or modifications not expressly approved by the grantee of this device could void the user's authority to operate the equipment. The customer is responsible for ensuring compliance of the modified product.

Intel Corporation 5200 N.E. Elam Young Parkway Hillsboro, OR 97124-6497

Phone: 1-800-628-8686

## Industry Canada, Class A

---

This Class A digital apparatus complies with Canadian ICES-003. This digital apparatus does not exceed the Class A limits for radio noise emissions from digital apparatus set out in the interference-causing equipment standard entitled "Digital Apparatus," ICES-003 of the Canadian Department of Communications.

Cet appareil numérique respecte les limites bruits radioélectriques applicables aux appareils numériques de Classe A prescrites dans la norme sur le matériel



brouilleur: "Appareils Numériques", NMB-003 édictée par le Ministre Canadian des Communications.

## Conformité Européenne (CE) Notice

---

This product has been determined to be in compliance with 2006/95/EC (Low Voltage Directive), 2004/108/EC (EMC Directive).

## EMC Statement - Korea

---

이 기기는 업무용 환경에서 사용할 목적으로 적  
합성평가를 받은 기기로서 가정용 환경에서 사  
용하는 경우 전파간섭의 우려가 있습니다.

## Japan (VCCI) - Voluntary Control Council for Interference Class A ITE

---

This is a class A product based on the standard of the Voluntary Control Council for Interference by Information Technology Equipment (VCCI). If this equipment is used in a domestic environment, radio disturbance may arise. When such trouble occurs, the user may be required to take corrective actions.

この装置は、クラスA機器です。この装置を住宅環境で使用すると  
電波妨害を引き起こすことがあります。この場合には使用者が適切な  
対策を講ずるよう要求されることがあります。 VCCI-A

## BSMI Statement - Taiwan

---

This is a class A product. In a domestic environment this product may cause radio interference in which case the user may be required to take adequate measures.

警告: 為避免電磁干擾, 本產品不應安裝或使用於住宅環境。  
Taiwan BSMI報關義務人  
申請人: 愛爾蘭商極進網絡技術行動有限公司台灣分公司  
地址: 臺北市松山區南京東路四段126號5樓  
電話: 02-2715-7336

設備名稱：通用 運算平台 Equipment name		型號（型式）： 2130C/3150C/3160C Type designation (Type)				
單元 Unit	限用物質及其化學符號 Restricted substances and its chemical symbols					
	鉛Lead (Pb)	汞 Mercury (Hg)	鎘 Cadmium (Cd)	六價鉻 Hexavalent chromium (Cr <sup>+6</sup> )	多溴聯苯 Polybromina ted biphenyls (PBB)	多溴二苯醚 Polybrominated diphenyl ethers (PBDE)
機殼/Chassis	○	○	○	○	○	○
機殼風扇/Chassis Fan	—	○	○	○	○	○
線材/Cable	○	○	○	○	○	○
主機板/Motherboard	—	○	○	○	○	○
電源供應器/Power Supply	—	○	○	○	○	○
硬碟/SSD	—	○	○	○	○	○
附加卡/ Add-on Card	—	○	○	○	○	○
備考1. “超出0.1 wt %”及“超出0.01 wt %”係指限用物質之百分比含量超出百分比含量基準值。 Note 1 : “Exceeding 0.1 wt %” and “exceeding 0.01 wt %” indicate that the percentage content of the restricted substance exceeds the reference percentage value of presence condition.						
備考2. “○”係指該項限用物質之百分比含量未超出百分比含量基準值。 Note 2 : “○” indicates that the percentage content of the restricted substance does not exceed the percentage of reference value of presence.						
備考3. “—”係指該項限用物質為排除項目。 Note 3 : The “—” indicates that the restricted substance corresponds to the exemption.						

警告:本產品不允許使用者拆開外蓋進行更換與維修，維修相關事宜請聯繫製造商。

警告:未正確更換電池會有爆炸危險。更換電池時，僅可使用製造商建議的同類型或同等級電池，並請按照製造商的指示處理用過的電池。



觸電危險：操作設備時請配戴防靜電腕帶，以免損壞設備或組件。



電氣危險：只有合格人員才能執行安裝程序。

在本文檔中的安全說明中，合格人員定義為根據既定安全實務和標準調試、接地和標記設備、系統和電路而被授權的人員。

合格人員了解根據國家規範安裝電氣設備所涉及的要求和風險。

警告: 本產品不適合兒童使用 (本產品不是玩具)。本設備不適合在可能有兒童出現的地方使用。


CCC Statement - China

**警告: 在居住环境中, 运行此设备可能会造成无线电干扰。**

**产品不带电源线销售, 消费者若使用则购买符合CCC认证要求并满足标准要求的电线组件。**

Supplement to Product Instructions

产品说明书附件  
Supplement to Product Instructions

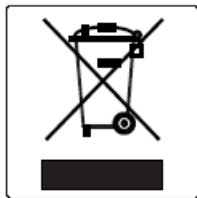
部件名称 (Parts)	有毒有害物质或元素 (Hazardous Substance)					
	铅 (Pb)	汞 (Hg)	镉 (Cd)	六价铬 (Cr <sup>6+</sup> )	多溴联苯 (PBB)	多溴二苯醚 (PBDE)
金属部件 (Metal Parts)	×	○	○	×	○	○
电路模块 (Circuit Modules)	×	○	○	×	○	○
电缆及电缆组件 (Cables & Cable Assemblies)	×	○	○	×	○	○
塑料和聚合物部件 (Plastic and Polymeric parts)	○	○	○	○	○	×
电路开关 (Circuit Breakers)	○	○	×	×	○	○
<p>○: 表示该有毒有害物质在该部件所有均质材料中的含量均在 SJ/T 11363-2006 标准规定的限量要求以下。 Indicates that the concentration of the hazardous substance in all homogeneous materials in the parts is below the relevant threshold of the SJ/T 11363-2006 standard.</p> <p>×: 表示该有毒有害物质至少在该部件的某一均质材料中的含量超出SJ/T 11363-2006 标准规定的限量要求。 Indicates that the concentration of the hazardous substance of at least one of all homogeneous materials in the parts is above the relevant threshold of the SJ/T 11363-2006 standard.</p> <p>对销售之日的所售产品, 本表显示。 凯创供应链的电子产品信息产品可能包含这些物质。注意: 在所售产品中可能会也可能不会含有所有所列的部件。 This table shows where these substances may be found in the supply chain of Extreme electronic information products, as of the date of sale of the enclosed product. Note that some of the component types listed above may or may not be a part of the enclosed product.</p>						
<p>除非另外特别的标注, 此标志为针对所涉及产品的环保使用期标志。某些零部件会有一个不同的环保使用期(例如, 电池单元模块)贴在其产品上。 此环保使用期限只适用于产品是在产品手册中所规定的条件下工作。 The Environmentally Friendly Use Period (EFUP) for all enclosed products and their parts are per the symbol shown here, unless otherwise marked. Certain parts may have a different EFUP (for example, battery modules) and so are marked to reflect such. The Environmentally Friendly Use Period is valid only when the product is operated under the conditions defined in the product manual.</p> <div></div>						

Hazardous Substances

This product complies with the requirements of Directive 2011/65/EU and its amendments of the European Parliament and of the Council of 8 June 2011 on the restriction of the use of certain hazardous substances in electrical and electronic equipment.

## European Waste Electrical and Electronic Equipment (WEEE) Notice

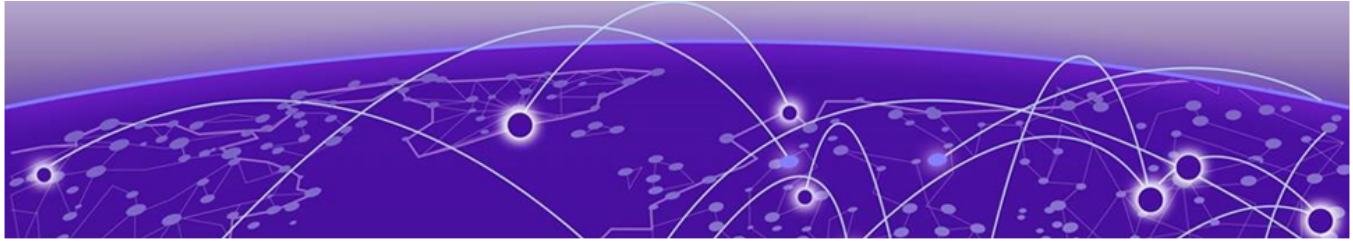
---



In accordance with Directive 2012/19/EU of the European Parliament on waste electrical and electronic equipment (WEEE):

1. The symbol above indicates that separate collection of electrical and electronic equipment is required.
2. When this product has reached the end of its serviceable life, it cannot be disposed of as unsorted municipal waste. It must be collected and treated separately.
3. It has been determined by the European Parliament that there are potential negative effects on the environment and human health as a result of the presence of hazardous substances in electrical and electronic equipment.
4. It is the user's responsibility to utilize the available collection system to ensure WEEE is properly treated.

For information about the available collection system, please contact Extreme Environmental Compliance at [Green@extremenetworks.com](mailto:Green@extremenetworks.com).



# Index

---

## Numerics

- 2130C fan module
  - replace a fan module 16
- 2130C power supply unit
  - install a power supply unit 15

## A

- announcements 8, 9

## B

- back panel 12
- box contents 14

## C

- cable installation 21
- configuration 18
- conventions
  - notice icons 6
  - text 6

## D

- data ports connection 20
- documentation
  - feedback 9
  - location 7, 8

## F

- FCC Notice, Federal Communications Commission, Regulatory Information 24
- feedback 9
- front control panel 12
- front panel 12

## H

- hardware installation
  - verify the box contents 15
  - work flow 14

## I

- Industry Canada Notice 24
- Installation 14
- interface

- interface (*continued*)
  - configuration 18
  - console port 18
  - management interface 18

## L

- LEDs
  - data ports LED 22
  - power supply unit LED 13

## M

- management interface
  - management port configuration 19
- mounting
  - rack mounting 17
  - rail kit 17

## N

- notices 6

## O

- overview 10

## P

- port LEDs
  - data ports 1 and 2 21
  - data ports 3 and 4 21
  - management port 21
- power source 17
- product announcements 8, 9

## R

- regulatory and compliance 23
- regulatory information, hazardous Substances 27
- Regulatory Statement, CCC Statement 27

## S

- safety guidelines 23
- specifications
  - environmental specifications 10, 11
  - physical specifications 10, 11
  - product specifications 10, 11
- support, *see* technical support

## T

- technical support
  - contacting 8, 9
- transceiver installation 21

## W

- warnings 6