

# Extreme Networks AI-TH08055 7dBi and 6dBi Indoor Panel Antenna

7dBi (2.4 GHz) and 6dBi (5 and 6 GHz) Indoor Hex Sector 2.4GHz 65 Degrees and 5GHz 55 Degrees Tri-band with attached 1 meter 6-port RP-SMA cable. Mount included. It is supported on the AP4020FX. Cable straps ordered separately.

## TECHNICAL SPECIFICATIONS

### FREQUENCY/MAXIMUM GAIN

- 2.4-2.5 GHz/7dBi
- 5.15-5.85 GHz/6dBi
- 5.925-7.125 GHz/6dBi

### DIMENSIONS

- 250 mm x 250 mm x 25 mm  
(9.84 inches x 9.84 inches x .98 inches)

### POLARIZATION

- Vertical + Horizontal

### WEIGHT

- 1.0 kg (2.2 lbs)

### BEAMWIDTH

- Horizontal plane: 65°/55°
- Vertical plane: 65°/65°

### HOUSING

- Housing: Aluminum
- Radome: Plastic

### VSWR

- 2:1 max

### INSTALLATION HARDWARE

- Azimuth/elevation mount kit for pole

### IMPEDANCE

- 50 ohms

### PIGTAILS

- 1 meter / RP-SMA Male\*6

### MAXIMUM INPUT POWER

- 50 watts

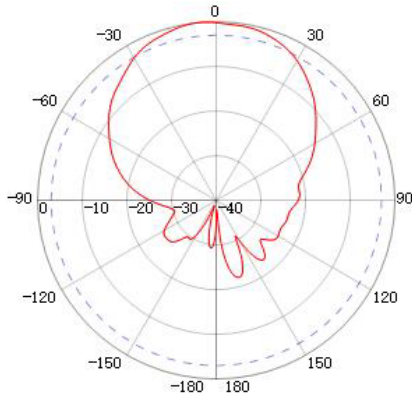
### OPERATING TEMPERATURE

- -40° C to +70° C (-40° F to +158° F)

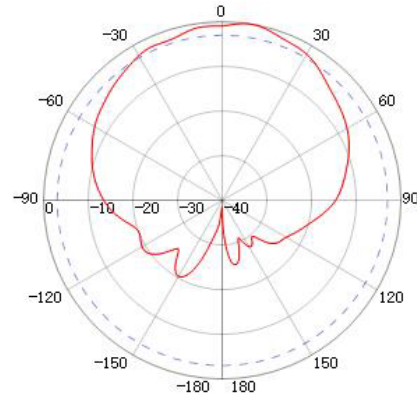


## ANTENNA PATTERN PLOTS

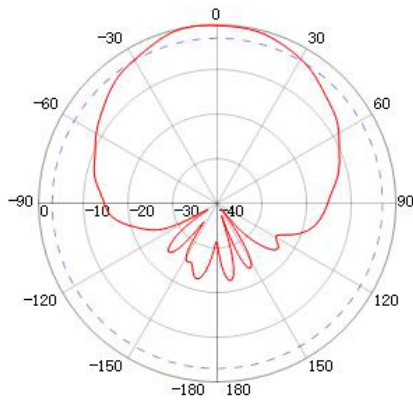
### VERTICAL PATTERNS



2.4 GHz

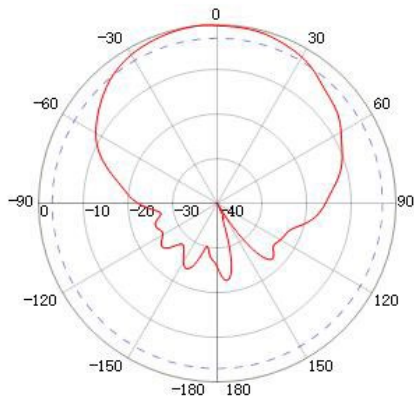


5 GHz

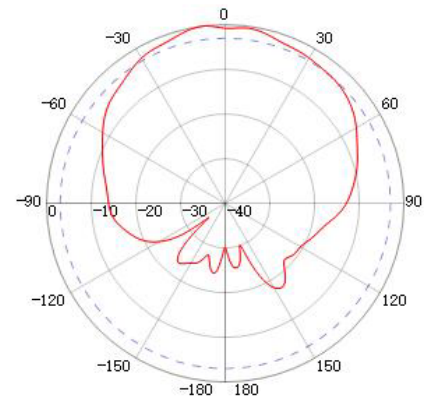


6 GHz

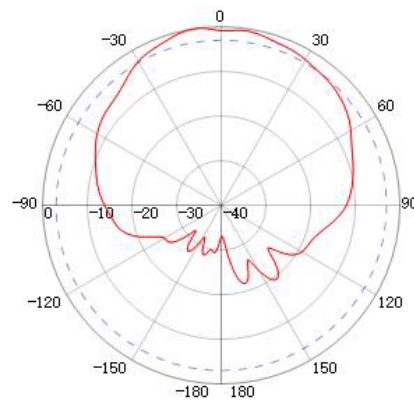
## HORIZONTAL PATTERNS



2.4 GHz



5GHz



6GHz

## PURCHASE INFORMATION

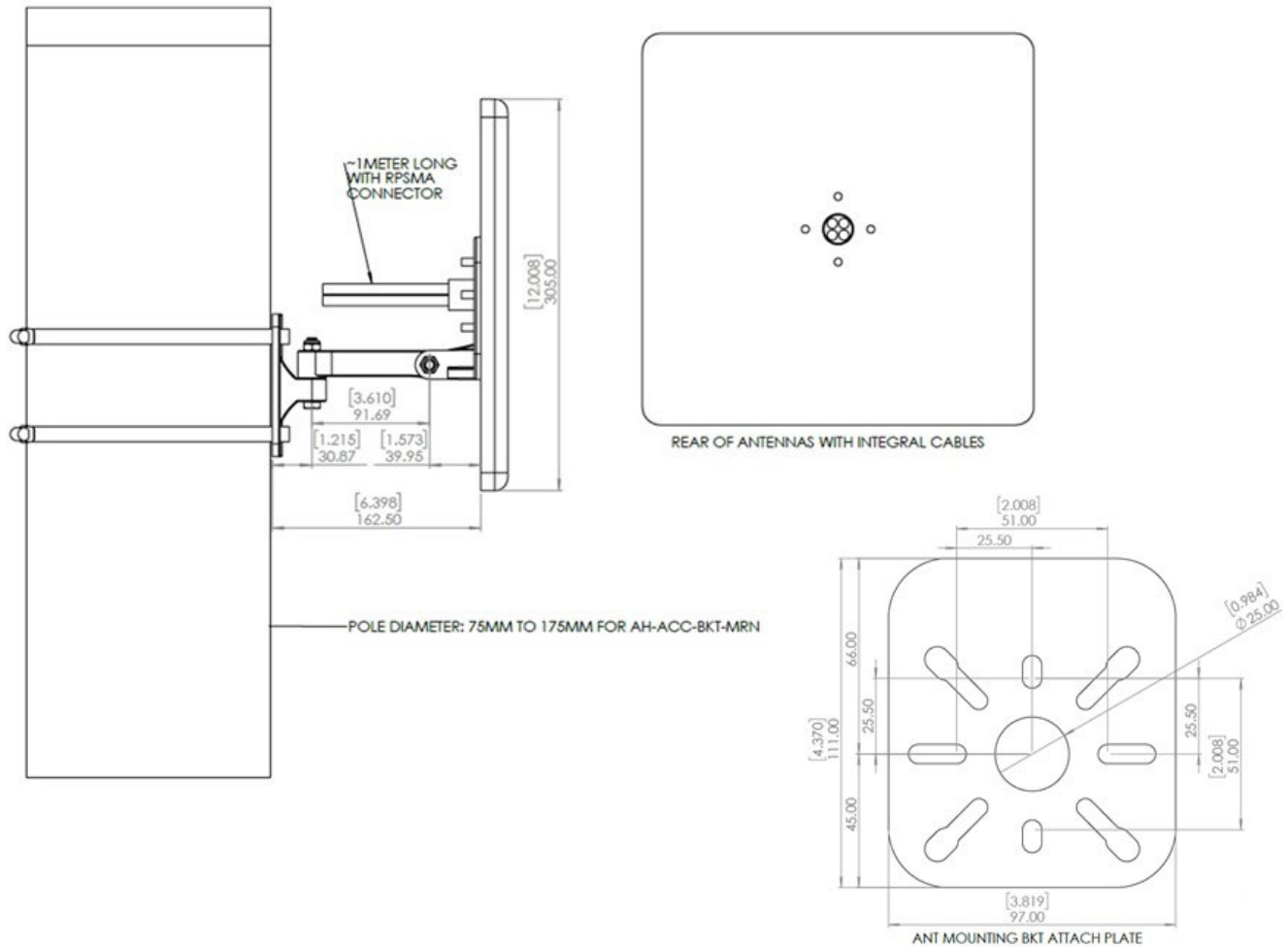
Cable straps are ordered separately.

### ORDERING INFORMATION

Part Number	Description
AI-TH08055	7dBi (2.4 GHz) and 6dBi (5 and 6 GHz) Indoor Hex Sector 2.4GHz 65 Degrees and 5GHz 55 Degrees Tri-band with attached 1 meter 6-port RP-SMA cable. Mount included.

## MOUNTING BRACKET

### Bracket



## LEGAL

Copyright © 2025 Extreme Networks, Inc. All rights reserved.

### Legal Notice

Extreme Networks, Inc. reserves the right to make changes in specifications and other information contained in this document and its website without prior notice. The reader should in all cases consult representatives of Extreme Networks to determine whether any such changes have been made. The hardware, firmware, software or any specifications described or referred to in this document are subject to change without notice.

### Trademarks

Extreme Networks and the Extreme Networks logo are trademarks or registered trademarks of Extreme Networks, Inc. in the United States and/or other countries. All other names (including any product names) mentioned in this document are the property of their respective owners and may be trademarks or registered trademarks of their respective companies/owners. For additional information on Extreme Networks trademarks, see: <http://www.extremenetworks.com/company/legal/trademarks>.

### Open Source Declarations

Some software files have been licensed under certain open source or third-party licenses. End-user license agreements and open source declarations can be found at: [https:// www.extremenetworks.com/support/policies/open-source-declaration/](https://www.extremenetworks.com/support/policies/open-source-declaration/).

### Corporate Headquarters

Extreme Networks is 2121 RDU Center Drive in Morrisville, NC