

Extreme Networks AI-TH14035 12dBi and 11.5dBi Indoor Panel Antenna

12dBi (2.4 GHz) and 11.5dBi (5 and 6 GHz) Indoor Hex Sector 35 Degree Tri-band with detachable 1 meter 6-port RP-SMA cable. Mount included. Cable straps ordered separately. It is supported on AP4020FX.

TECHNICAL SPECIFICATIONS

FREQUENCY/MAXIMUM GAIN

- 2.4-2.5 GHz/12dBi
- 5.15-5.85 GHz/11.5dBi
- 5.925-7.125 GHz/11.5dBi

DIMENSIONS

- 370 mm x 370 mm x 25 mm

POLARIZATION

- Vertical + Horizontal

WEIGHT

- 2.34 kg (5.16 lbs)

BEAMWIDTH

- Horizontal plane: 35°/40°
- Vertical plane: 35°/40°
-

HOUSING

- Housing: Aluminum
- Radome: Plastic

VSWR

- 2:1
max



INSTALLATION HARDWARE

- Azimuth/elevation mount kit for pole

IMPEDANCE

- 50 ohms

PIGTAILS

- SMA Female*6

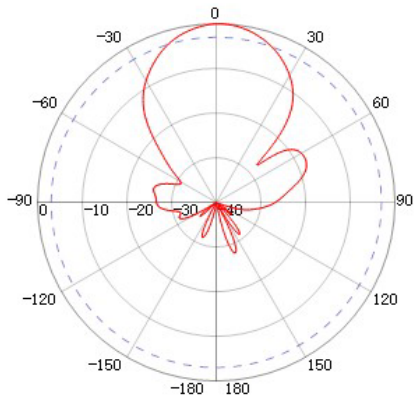
MAXIMUM INPUT POWER

- 50 watts

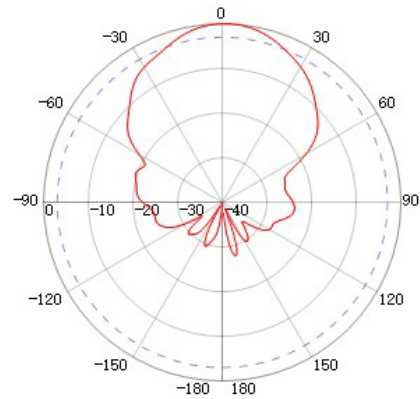
OPERATING TEMPERATURE

- -40° C to +70° C (-40° F to +158° F)

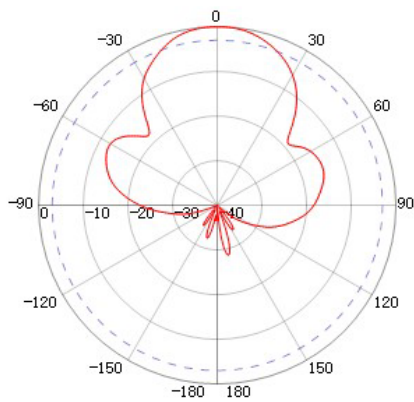
ANTENNA PATTERN PLOTS
VERTICAL PATTERNS



2.4 GHz

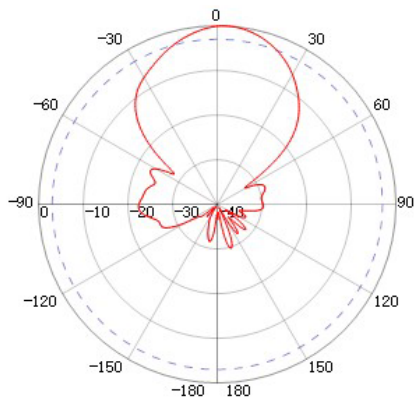


5 GHz

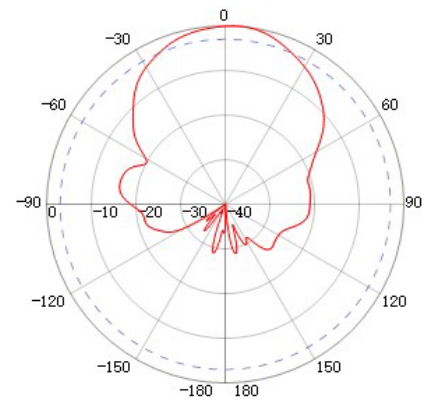


6 GHz

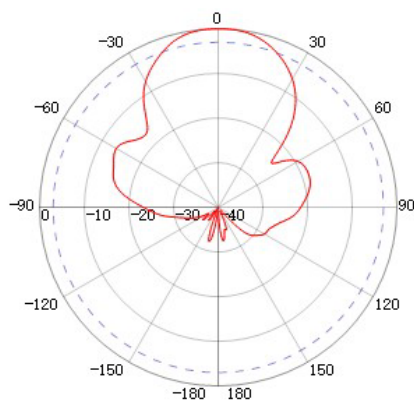
HORIZONTAL PATTERNS



2.4 GHz



5GHz



6GHz

PURCHASE INFORMATION

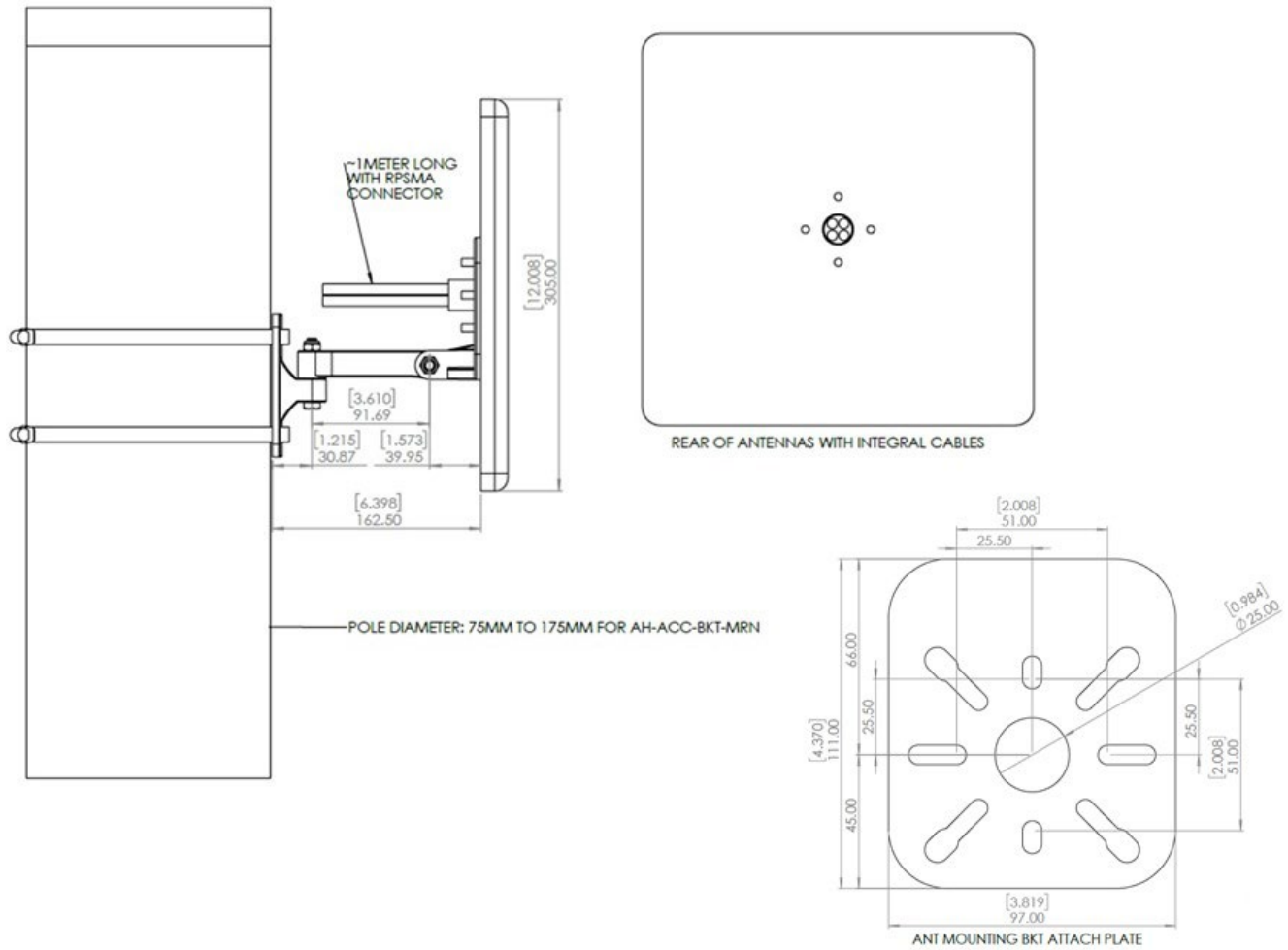
Cable straps are ordered separately.

ORDERING INFORMATION

Part Number	Description
AI-TH14035	12dBi (2.4 GHz) and 11.5dBi (5 and 6 GHz) Indoor Hex Sector 35 Degree Tri-band with detachable 1 meter 6-port RP-SMA cable. Mount included.

MOUNTING BRACKET

Bracket



LEGAL

Copyright © 2025 Extreme Networks, Inc. All rights reserved.

Legal Notice

Extreme Networks, Inc. reserves the right to make changes in specifications and other information contained in this document and its website without prior notice. The reader should in all cases consult representatives of Extreme Networks to determine whether any such changes have been made. The hardware, firmware, software or any specifications described or referred to in this document are subject to change without notice.

Trademarks

Extreme Networks and the Extreme Networks logo are trademarks or registered trademarks of Extreme Networks, Inc. in the United States and/or other countries. All other names (including any product names) mentioned in this document are the property of their respective owners and may be trademarks or registered trademarks of their respective companies/owners. For additional information on Extreme Networks trademarks, see: <http://www.extremenetworks.com/company/legal/trademarks>.

Open Source Declarations

Some software files have been licensed under certain open source or third-party licenses. End-user license agreements and open source declarations can be found at: [https:// www.extremenetworks.com/support/policies/open-source-declaration/](https://www.extremenetworks.com/support/policies/open-source-declaration/).

Corporate Headquarters

Extreme Networks is 2121 RDU Center Drive in Morrisville, NC