

# Extreme Networks AIO-DQ15021-RPSMA Panel Antenna Technical Specifications

15 dBi Indoor/Outdoor Sector 21 Deg, 36 inch cable, RPSMA. It is supported on the AP5022FX, AP4020X, AP510e, and AP410e. Cable straps ordered separately. Wall and pole mount are included.

## TECHNICAL SPECIFICATIONS

### FREQUENCY/MAXIMUM GAIN

- 4.9-5.9 GHz/13.4dBi

### DIMENSIONS

- 373.3 x 411.4 mm  
(14.7 x 16.2 inches)

### POLARIZATION

- 2 Ports Horizontal
- 2 Ports Vertical

### WEIGHT

- 1.58 Kg (3.48 lb)

### BEAMWIDTH

- Horizontal plane: 21°/20°
- Vertical plane: 21°/18°

### MATERIALS

- Radome: ASA (White)

### VSWR

- 2:1 max

### INSTALLATION HARDWARE

- Azimuth/elevation mount kit for wall and pole

### IMPEDANCE

- 50 ohms

### PIGTAILS

- RP-SMA (4)

### MAXIMUM INPUT POWER

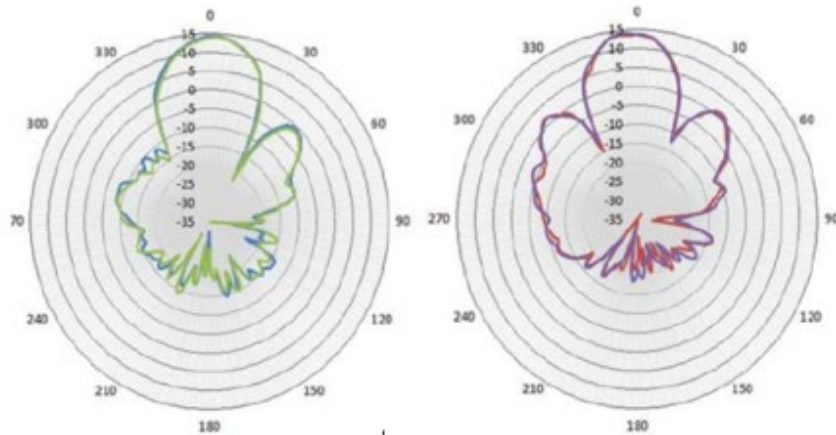
- 10 watts

### OPERATING TEMPERATURE

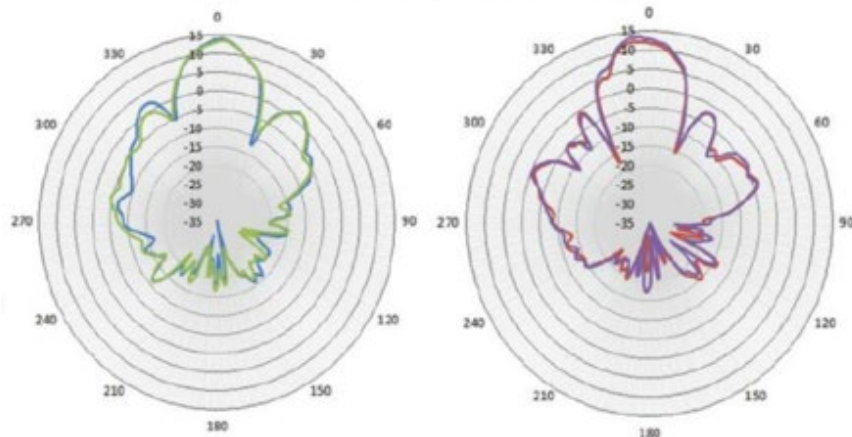
- -40°C to +70°C (-40°F - +158°F)

## ANTENNA PATTERN PLOTS

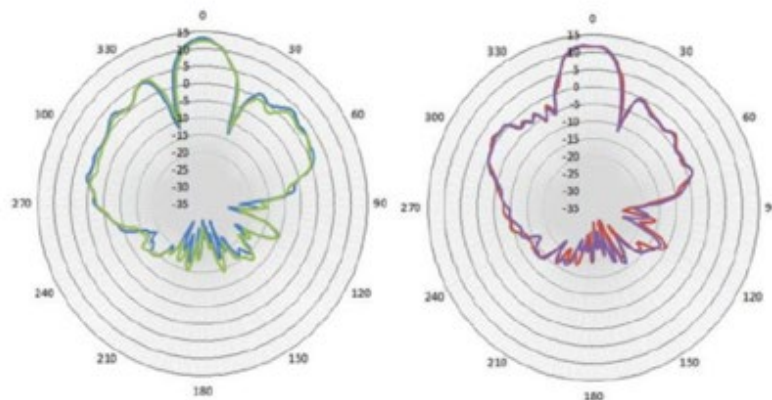
### VERTICAL PATTERNS



**AIO-DQ15021-RPSMA 4.9GHz**

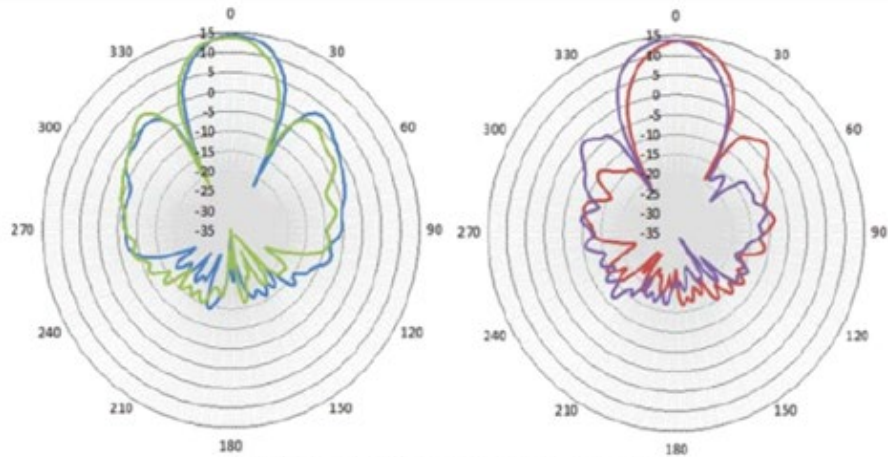


**AIO-DQ15021-RPSMA 5.5GHz**

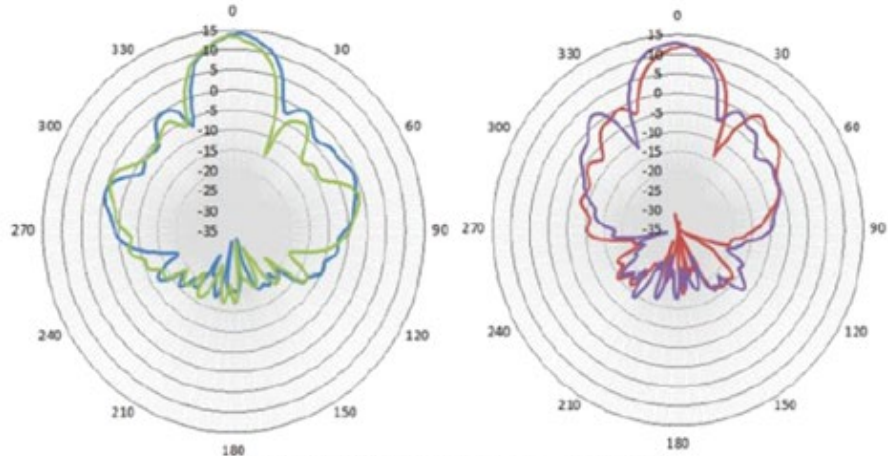


**AIO-DQ15021-RPSMA 5.9GHz**

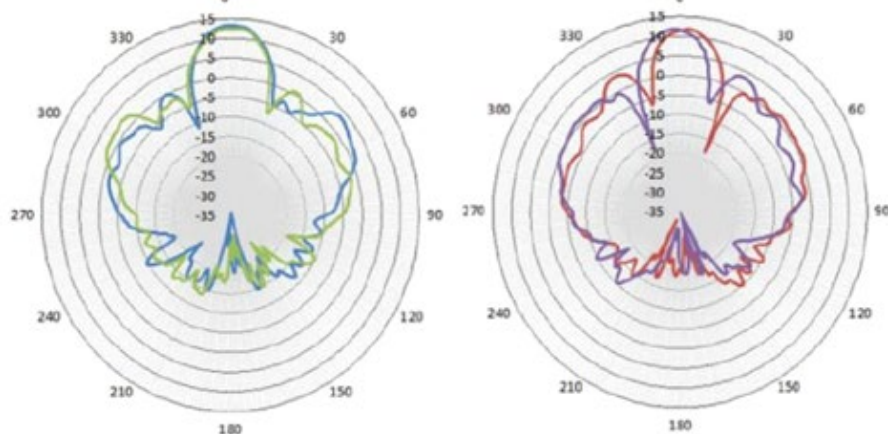
## HORIZONTAL PATTERNS



**AIO-DQ15021-RPSMA 4.9GHz**



**AIO-DQ15021-RPSMA 4.9GHz**

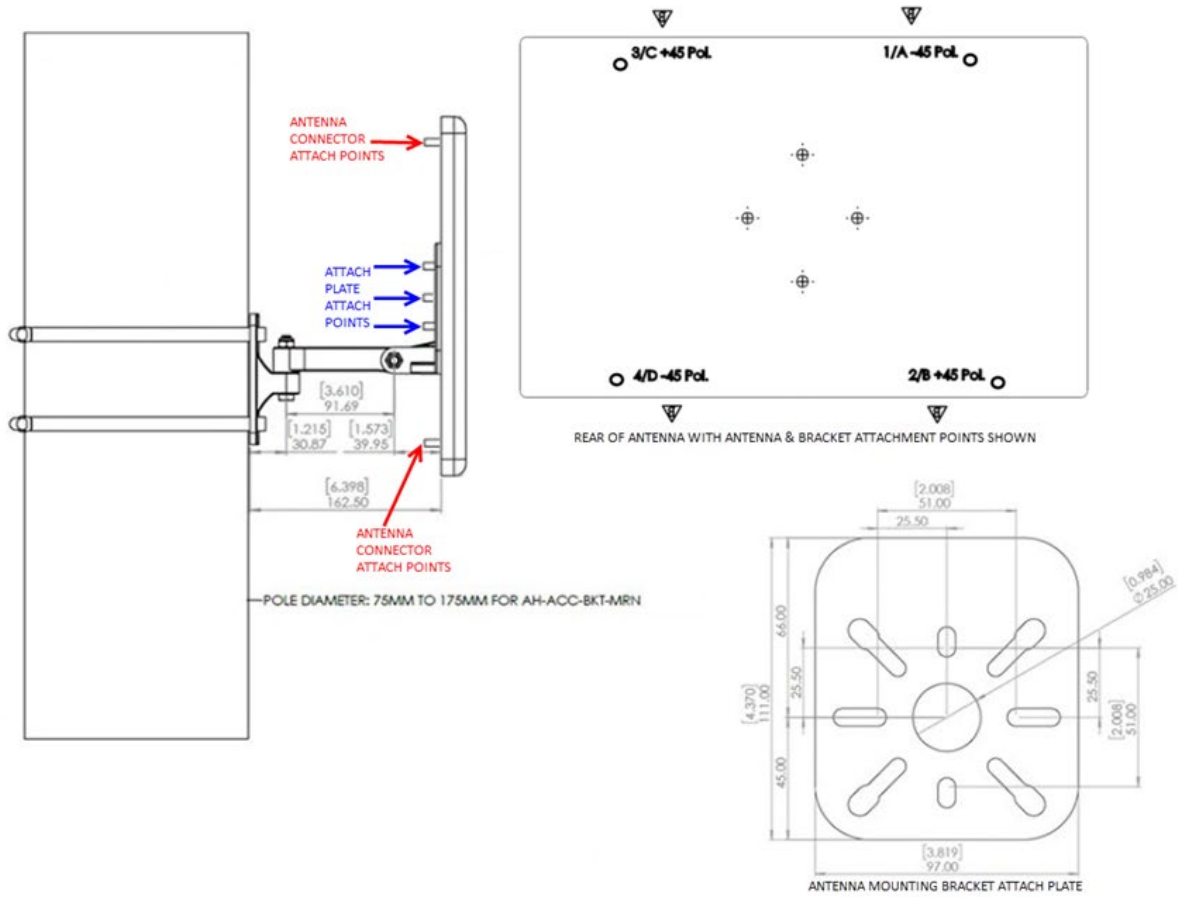


**AIO-DQ15021-RPSMA 5.95GHz**

## PURCHASE INFORMATION

### ORDERING INFORMATION

Part Number	Description
AIO-DQ15021-RPSMA	15 dBi Indoor/Outdoor Sector 21 Deg, 36 inch cable, RPSMA



## LEGAL

Copyright © 2025 Extreme Networks, Inc. All rights reserved.

### Legal Notice

Extreme Networks, Inc. reserves the right to make changes in specifications and other information contained in this document and its website without prior notice. The reader should in all cases consult representatives of Extreme Networks to determine whether any such changes have been made. The hardware, firmware, software or any specifications described or referred to in this document are subject to change without notice.

### Trademarks

Extreme Networks and the Extreme Networks logo are trademarks or registered trademarks of Extreme Networks, Inc. in the United States and/or other countries. All other names (including any product names) mentioned in this document are the property of their respective owners and may be trademarks or registered trademarks of their respective companies/owners. For additional information on Extreme Networks trademarks, see: <http://www.extremenetworks.com/company/legal/trademarks>.

### Open Source Declarations

Some software files have been licensed under certain open source or third-party licenses. End-user license agreements and open source declarations can be found at: [https:// www.extremenetworks.com/support/policies/open-source-declaration/](https://www.extremenetworks.com/support/policies/open-source-declaration/).

### Corporate Headquarters

Extreme Networks, 2121 RDU Center Drive, Morrisville, NC