

Extreme Networks AIO-HQ17020 Quad Directional 17dBi Indoor Panel Antenna Technical Specification

17dBi (5 and 6 GHz) Indoor Quad Directional 20 Degree with detachable 1 meter 4-port RP-SMA cable. Mount included. Cable straps ordered separately. This antenna is supported on the AP5022FX and AP4020FX. It is to be used indoors only due to the RP-SMA connector.

TECHNICAL SPECIFICATIONS

FREQUENCY/MAXIMUM GAIN

- 5.15-5.85 GHz/16.4dBi
- 5.925-7.125 GHz/17.2dBi

DIMENSIONS

- 290mm x 185mm x 50 mm
(11.41 inches x 7.28 inches x 1.96 inches)

POLARIZATION

- Dual slant polarization (+/- 45 deg.)

WEIGHT

- 1.7kg (3.75 lbs)

BEAMWIDTH

- Horizontal plane: 21°/20°
- Vertical plane: 20°/16°

HOUSING

- Housing: Aluminum
- Radome: Plastic

VSWR

- 2:1 max



INSTALLATION HARDWARE

- Azimuth/elevation mount kit for pole

IMPEDANCE

- 50 ohms

Detachable

- 1000mm RP-SMA*4

MAXIMUM INPUT POWER

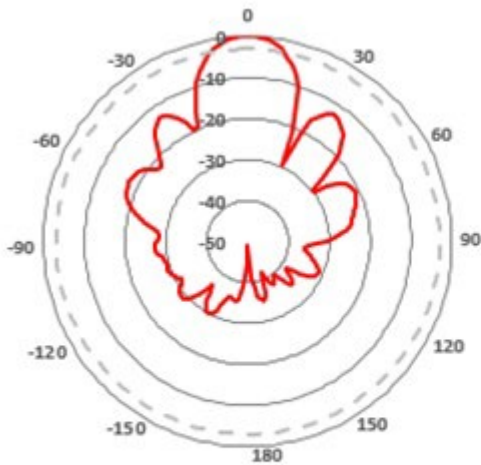
- 50 watts

OPERATING TEMPERATURE

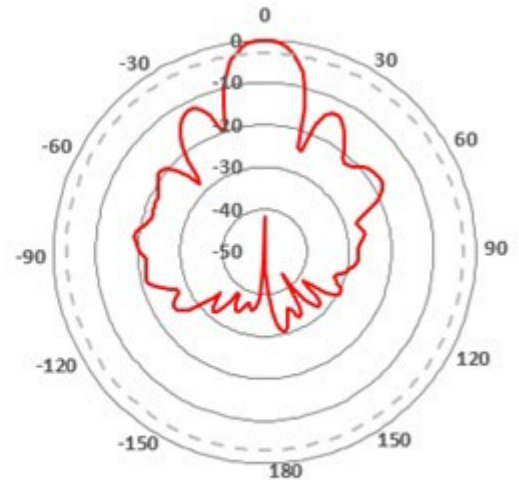
- -40° C to +70° C (-40° F to +158° F)
- IP67

ANTENNA PATTERN PLOTS

VERTICAL PATTERNS

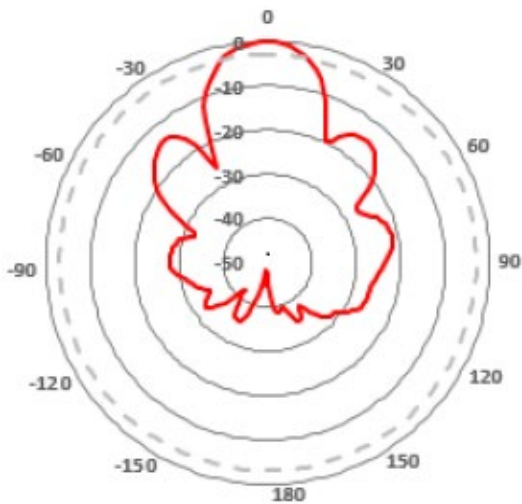


5 GHz

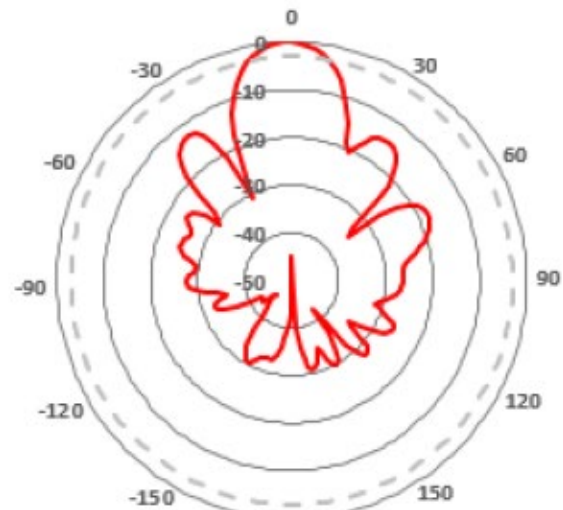


6 GHz

HORIZONTAL PATTERNS



5 GHz



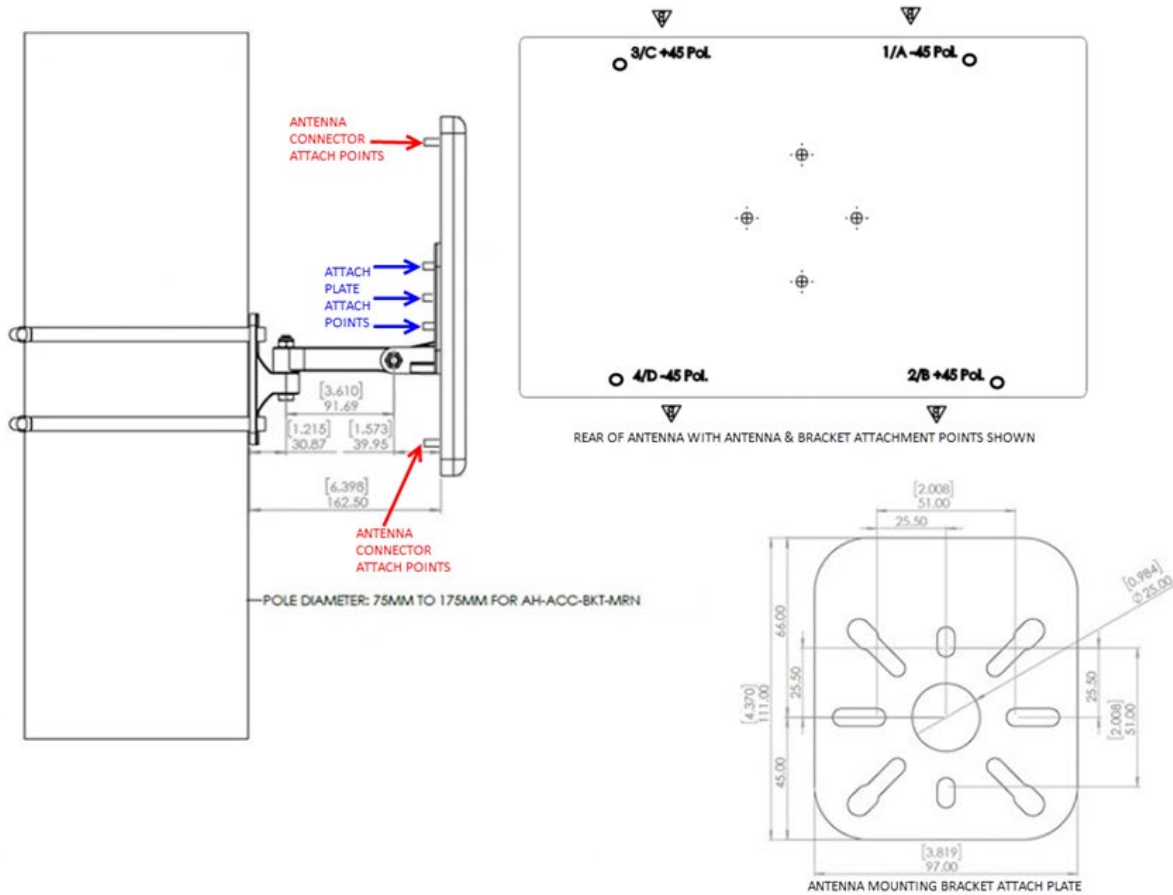
6 GHz

Cable straps are ordered separately.

ORDERING INFORMATION

Part Number	Description
AIO-HQ17020	17dBi (5 and 6 GHz) Indoor Quad Directional 20 Degree with detachable 1 meter 4-port RP-SMA cable. Mount included.

MOUNTING BRACKET



LEGAL

Copyright © 2025 Extreme Networks, Inc. All rights reserved.

Legal Notice

Extreme Networks, Inc. reserves the right to make changes in specifications and other information contained in this document and its website without prior notice. The reader should in all cases consult representatives of Extreme Networks to determine whether any such changes have been made. The hardware, firmware, software or any specifications described or referred to in this document are subject to change without notice.

Trademarks

Extreme Networks and the Extreme Networks logo are trademarks or registered trademarks of Extreme Networks, Inc. in the United States and/or other countries. All other names (including any product names) mentioned in this document are the property of their respective owners and may be trademarks or registered trademarks of their respective companies/owners. For additional information on Extreme Networks trademarks, see: <http://www.extremenetworks.com/company/legal/trademarks>.

Open Source Declarations

Some software files have been licensed under certain open source or third-party licenses. End-user license agreements and open source declarations can be found at: [https:// www.extremenetworks.com/support/policies/open-source-declaration/](https://www.extremenetworks.com/support/policies/open-source-declaration/).

Corporate Headquarters

Extreme Networks, 2121 RDU Center Drive, Morrisville, NC.