

Installing the Enterasys Wireless Outdoor AP3660

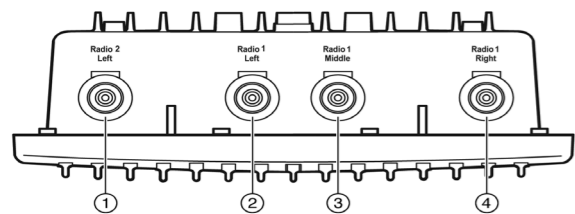
Electrical Hazard: Only qualified personnel should perform installation procedures.

For complete installation instructions and information about the Enterasys Wireless Outdoor AP3660, see the *Enterasys Wireless Outdoor AP3660 Installation Guide* at <https://extranet.enterasys.com/downloads>.

Overview of the Enterasys Wireless Outdoor AP3660

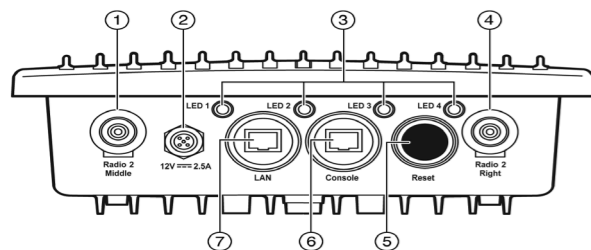
The Enterasys Wireless Outdoor AP enables you to extend your Wireless LAN beyond the boundaries of indoor locations. It is resistant to harsh outdoor conditions and extreme temperatures. Using the advanced wireless distribution mesh feature of Enterasys Wireless LAN, the AP3660 can extend your Wireless LAN to outdoor locations without Ethernet cabling. A mounting bracket is available for quick and easy mounting of the Enterasys Wireless Outdoor APs to walls and poles.

Figure 1 AP3660 Top View



- | | |
|------------------------|--------------------------|
| 1 Radio 2 Left Antenna | 3 Radio 1 Middle Antenna |
| 2 Radio 1 Left Antenna | 4 Radio 1 Right Antenna |

Figure 2 AP3660 Bottom View



- | | |
|--------------------------|----------------|
| 1 Radio 2 Middle Antenna | 5 Reset Switch |
| 2 12V DC Connector | 6 Console Port |
| 3 Status LEDs | 7 LAN Port |
| 4 Radio 2 Right Antenna | |

The Enterasys Wireless Outdoor AP3660 supports the 802.11n, 802.11a, 802.11g, and full backward compatibility with legacy 802.11b devices. The AP3660 with external antenna connectors supports a variety of antennas, providing range and coverage versatility.

The AP3660 interoperates fully with Enterasys Wireless LAN, including support for VoWLAN, branch office mode, guest services, RTLS, availability and mobility features.

Unpacking the Enterasys Wireless Outdoor AP3660

Unpack the AP3660 from its carton. The following components are supplied with the AP3660 package

- 1 mounting bracket
- 1 spacer

- 2 stainless steel tie back straps that support pole diameters up to 4 inches
- 4 M6 screws
- 4 flat washers
- 4 spring washers
- 1 ground screw
- RJ45 waterproof connector assembly
- A printed copy of the *Enterasys Wireless Outdoor Access Point Quick Reference AP3660*

Note: Before you start mounting the Enterasys Wireless Outdoor AP3660, read the Safety Guidelines below.

Mounting and Connecting the Enterasys Wireless Outdoor AP3660

Use these instructions as guidelines for mounting and connecting the AP3660 easily and safely. More detailed installation instructions are available in the full *Enterasys Wireless Outdoor AP3660 Installation Guide*. The installation of the AP3660 should be performed by a professional installer to ensure proper operation and compliance with safety guidelines.

Mounting the AP3660:

1. Attach the mounting bracket and spacer to the AP3660 using four M6 screws, four spring washers, and four flat washers. You can attach the bracket to the AP3660 in either the vertical or horizontal position as shown in Figures 3 and 4.

Figure 3 Mounting Bracket — Vertical Position

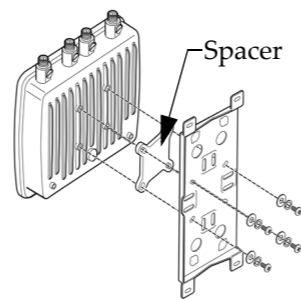
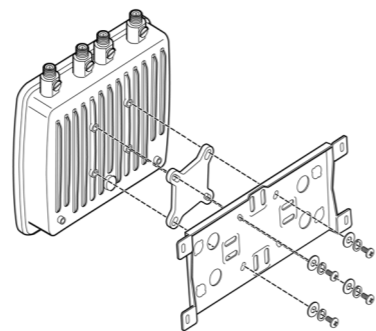


Figure 4 Mounting Bracket — Horizontal Position



2. You can mount the AP3660 to either a pole or a wall:
 - a. To mount the AP3660 with the attached mounting bracket to a pole, use the supplied stainless steel tie back straps. You can mount the AP3660 to a pole in one of three possible configurations, as shown in Figures 5, 6, and 7.

Figure 5 AP3660 — Pole Mount Option 1

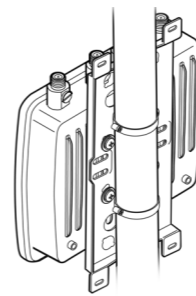


Figure 6 AP3660 — Pole Mount Option 2

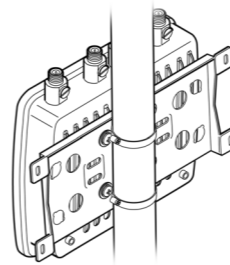
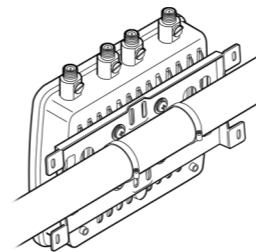
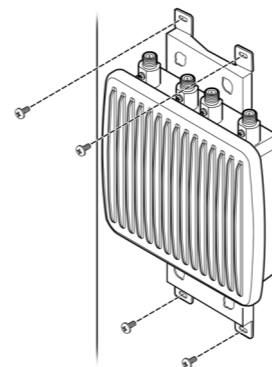


Figure 7 AP3660 — Pole Mount Option 3



- b. Mount the AP3660 and the attached mounting bracket to a wall using four wood/gyprock screws as shown in Figure 8.

Figure 8 AP3660 — Wall Mount



3. Install the external antennas intended for area coverage. For information about antenna selection and installation, refer to the *External Antenna Site Preparation and Installation Guide*.
4. Attach the external antenna cables to the Reverse Polarity Type-N (RP-N) connectors on the AP3660.

Connecting and Powering the AP3660

You can power up the AP3660 in one of the following ways:

- **Power over Ethernet: Adding PoE injector**
You can provide power to the Ethernet cable with a PoE injector. The PoE injector must be 802.3at compliant. The PoE injector is not provided with the AP.

A waterproof RJ45 connector is provided to connect the PoE injector to the AP3660. You must connect the RJ45 connector to the RJ45 cable. For instructions, refer to the full *Enterasys Wireless Outdoor AP3660 Installation Guide*.

Power by external power supply

You can purchase an external power supply unit (WS-PS3660-MR) to power the AP3660. See your Enterasys sales representative for details.

For power supply installation instructions, refer to the *Enterasys Wireless Outdoor AP3660 Installation Guide*.

Regulatory and Compliance Information

Federal Communications Commission (FCC) Notice:

This device complies with Part 15 of the FCC rules. Operation is subject to the following two conditions: (1) this device may not cause harmful interference, and (2) this device must accept any interference received, including interference that may cause undesired operation.

Warning: Changes or modifications made to this device which are not expressly approved by the party responsible for compliance could void the user's authority to operate the equipment.

Industry Canada Notice:

This digital apparatus does not exceed the Class B limits for radio noise emissions from digital apparatus set out in the Radio Interference Regulations for the Canadian Department of Communications.

Le présent appareil numérique n'émet pas de bruits radioélectriques dépassant les limites applicables aux appareils numériques de la class B prescrites dans le Règlement sur le brouillage radioélectrique édicté par le ministère des Communications du Canada.

Refer to the Enterasys Wireless Outdoor AP3660 Installation Guide, Appendix B, "Regulatory Information," for complete regulatory information.

Safety Guidelines

This section contains notices that you must adhere to ensure your personal safety and to prevent any damage to the equipment.

Qualified Personnel:

Electrical Hazard: Only qualified personnel should perform installation procedures. Within the context of the safety notes in this documentation qualified persons are defined as persons who are authorized to commission, ground and label devices, systems and circuits in accordance with established safety practices and standards. A qualified person understands the requirements and risks involved with installing outdoor electrical equipment in accordance with national codes.

Grounding Warning:

Warning: To operate the Enterasys Wireless Outdoor AP3660 safely, the chassis ground connector must have a suitable cable connected. Do not use the Enterasys Wireless Outdoor AP3660 without a ground cable connected.

Lightning Protection Warning:



Warning: Antennas installed outdoors must be within the area covered by a lightning protection system. Make sure that all conducting systems entering from outdoors can be protected by a lightning protection potential equalization system. When implementing your lightning protection concept, make sure you adhere to the VDE 0182 or IEC 62305 standard.

The AP3660 has a built-in lightning protector; no external lightning protector is required. You must, however, note that the lightning protector is not an adequate protection against a lightning strike. The lightning protector only works within the framework of a comprehensive lightning protection concept. If you have questions, ask a qualified specialist company.

产品说明书附件 Supplement to Product Instructions

部件名称 (Parts)	有毒有害物质或元素 (Hazardous Substance)					
	铅 (Pb)	汞 (Hg)	镉 (Cd)	六价铬 (Cr ⁶⁺)	多溴联苯 (PBB)	多溴二苯醚 (PBDE)
金属部件 (Metal Parts)	×	○	○	×	○	○
电路模块 (Circuit Modules)	×	○	○	×	○	○
电缆及电缆组件 (Cables & Cable Assemblies)	×	○	○	×	○	○
塑料和聚合物部件 (Plastic and Polymeric parts)	○	○	○	○	○	×
电路开关 (Circuit Breakers)	○	○	×	×	○	○

○: 表示该有毒有害物质在该部件所有均质材料中的含量均在 SJ/T 11363-2006 标准规定的限量要求以下。
Indicates that the concentration of the hazardous substance in all homogeneous materials in the parts is below the relevant threshold of the SJ/T 11363-2006 standard.

×: 表示该有毒有害物质至少在该部件的某一均质材料中的含量超出 SJ/T 11363-2006 标准规定的限量要求。
Indicates that the concentration of the hazardous substance of at least one of all homogeneous materials in the parts is above the relevant threshold of the SJ/T 11363-2006 standard.

对销售之日的所售产品, 本表显示。
凯创供应链的电子产品信息可能包含这些物质。注意: 在所售产品中可能会也可能不会含有所有列出的部件。
This table shows where these substances may be found in the supply chain of Enterasys' electronic information products, as of the date of sale of the enclosed product. Note that some of the component types listed above may or may not be a part of the enclosed product.

除非另外特别的标注, 此标志为针对所涉及产品的环保使用期标志。某些零部件会有一个不同的环保使用期(例如, 电池单元模块)贴在其产品上。
此环保使用期限只适用于产品是在产品手册中所规定的条件下工作。
The Environmentally Friendly Use Period (EFUP) for all enclosed products and their parts are per the symbol shown here, unless otherwise marked. Certain parts may have a different EFUP (for example, battery modules) and so are marked to reflect such. The Environmentally Friendly Use Period is valid only when the product is operated under the conditions defined in the product manual.



Hazardous Substances

This product complies with the requirements of European Directive, 2002/95/EC, Restriction of Hazardous Substances (RoHS) in Electrical and Electronic Equipment.

European Waste Electrical and Electronic Equipment (WEEE) Notice



In accordance with Directive 2002/96/EC of the European Parliament on waste electrical and electronic equipment (WEEE):

1. The symbol above indicates that separate collection of electrical and electronic equipment is required and that this product was placed on the European market after August 13, 2005, the date of enforcement for Directive 2002/96/EC.
2. When this product has reached the end of its serviceable life, it cannot be disposed of as unsorted municipal waste. It must be collected and treated separately.

3. It has been determined by the European Parliament that there are potential negative effects on the environment and human health as a result of the presence of hazardous substances in electrical and electronic equipment.
4. It is the users' responsibility to utilize the available collection system to ensure WEEE is properly treated. For information about the available collection system, please go to www.enterasys.com/support/ or contact Enterasys Customer Support at 353 61 705586 (Ireland).

Declaration of Conformity in Languages of the European Community

- English** Hereby, Enterasys, declares that this Radio LAN device is in compliance with the essential requirements and other relevant provisions of Directive 1999/5/EC.
- Finnish** Valmistaja Enterasys vakuuttaa täten että Radio LAN device tyypinen laite on direktiivin 1999/5/EY oleellisten vaatimusten ja sitä koskevien direktiivin muiden ehtojen mukainen.
- Dutch** Hierbij verklaart Enterasys dat het toestel Radio LAN device in overeenstemming is met de essentiële eisen en de andere relevante bepalingen van richtlijn 1999/5/EG.
- Bij deze verklaart Enterasys dat deze Radio LAN device voldoet aan de essentiële eisen en aan de overige relevante bepalingen van Richtlijn 1999/5/EC.
- French** Par la présente Enterasys déclare que l'appareil Radio LAN device est conforme aux exigences essentielles et aux autres dispositions pertinentes de la directive 1999/5/CE.
- Par la présente, Enterasys déclare que ce Radio LAN device est conforme aux exigences essentielles et aux autres dispositions de la directive 1999/5/CE qui lui sont applicables.
- Swedish** Härmed intyggar Enterasys att denna Radio LAN device står i överensstämmelse med de väsentliga egenskapskrav och övriga relevanta bestämmelser som framgår av direktiv 1999/5/EG.
- Danish** Undertegnede Enterasys erklærer herved, at følgende udstyr Radio LAN device overholder de væsentlige krav og øvrige relevante krav i direktiv 1999/5/EF.
- German** Hiermit erkläre Enterasys die Übereinstimmung des "WLAN Wireless Controller bzw. Access Points" mit den grundlegenden Anforderungen und den anderen relevanten Festlegungen der Richtlinie 1999/5/EG.
- Greek** ΜΕ ΤΗΝ ΠΑΡΟΥΣΑ Enterasys ΔΗΛΩΝΕΙ ΟΤΙ Radio LAN device ΣΥΜΜΟΡΦΩΝΕΤΑΙ ΠΡΟΣ ΤΙΣ ΟΥΣΙΩΔΕΙΣ ΑΠΑΙΤΗΣΕΙΣ ΚΑΙ ΤΙΣ ΛΟΙΠΕΣ ΣΧΕΤΙΚΕΣ ΔΙΑΤΑΞΕΙΣ ΤΗΣ ΟΔΗΓΙΑΣ 1999/5/ΕΚ.
- Icelandic** Enterasys lýsir her með yfir að thessi bunadur, Radio LAN device, uppfyllir allar grunnkröfur, sem gerðar eru í R&TTE tilskipun ESB nr 1999/5/EC.
- Italian** Con la presente Enterasys dichiara che questo Radio LAN device è conforme ai requisiti essenziali ed alle altre disposizioni pertinenti stabilite dalla direttiva 1999/5/CE.

- Spanish** Por medio de la presente Enterasys declara que el Radio LAN device cumple con los requisitos esenciales y cualesquiera otras disposiciones aplicables o exigibles de la Directiva 1999/5/CE.
- Portuguese** Enterasys declara que este Radio LAN device está conforme com os requisitos essenciais e outras disposições da Directiva 1999/5/CE.
- Malti** Hawnhekk, Enterasys, jiddikjara li dan Radio LAN device jikkonforma mal-htigijiet essenzjali u ma provvedimenti oħrajn rilevanti li hemm fid-Dirrettiva 1999/5/EC.

Notice

Enterasys Networks reserves the right to make changes in specifications and other information contained in this document and its Web site without prior notice. The reader should in all cases consult Enterasys Networks to determine whether any such changes have been made.

The hardware, firmware, or software described in this document is subject to change without notice.

IN NO EVENT SHALL Enterasys Networks BE LIABLE FOR ANY INCIDENTAL, INDIRECT, SPECIAL, OR CONSEQUENTIAL DAMAGES WHATSOEVER (INCLUDING BUT NOT LIMITED TO LOST PROFITS) ARISING OUT OF OR RELATED TO THIS DOCUMENT, WEB SITE, OR THE INFORMATION CONTAINED IN THEM, EVEN IF Enterasys Networks HAS BEEN ADVISED OF, KNEW OF, OR SHOULD HAVE KNOWN OF, THE POSSIBILITY OF SUCH DAMAGES.

Enterasys Networks, Inc.
50 Minuteman Road
Andover, MA 01810

© 2011 Enterasys Networks, Inc. All rights reserved.
Part Number: 9034581-01 January 2011

ENTERASYS and ENTERASYS NETWORKS and any logos associated therewith, are trademarks or registered trademarks of Enterasys Networks, Inc., in the United States and/or other countries. For a complete list of Enterasys trademarks, see <http://www.enterasys.com/company/trademarks.aspx>.

All other product names mentioned in this document may be trademarks or registered trademarks of their respective companies.

Enterasys Wireless

Outdoor Access Point

Quick Reference

AP3660

