



IQ Engine v10.7.3 Release Notes

New Features, Fixes, and Known Issues

9038992-00 Rev AB
October 2024



Copyright © 2024 Extreme Networks, Inc. All rights reserved.

Legal Notice

Extreme Networks, Inc. reserves the right to make changes in specifications and other information contained in this document and its website without prior notice. The reader should in all cases consult representatives of Extreme Networks to determine whether any such changes have been made.

The hardware, firmware, software or any specifications described or referred to in this document are subject to change without notice.

Trademarks

Extreme Networks and the Extreme Networks logo are trademarks or registered trademarks of Extreme Networks, Inc. in the United States and/or other countries.

All other names (including any product names) mentioned in this document are the property of their respective owners and may be trademarks or registered trademarks of their respective companies/owners.

For additional information on Extreme Networks trademarks, see: <https://www.extremenetworks.com/about-extreme-networks/company/legal/trademarks>

Open Source Declarations

Some software files have been licensed under certain open source or third-party licenses.

End-user license agreements and open source declarations can be found at: <https://www.extremenetworks.com/support/policies/open-source-declaration/>



Table of Contents

Abstract.....	iv
General Release Information for Release 10.7.3.....	5
Release Date.....	5
Abstract.....	5
New Hardware Supported.....	5
Hardware Platforms Supported.....	5
Management Platforms Supported.....	6
New Features in Release 10.7.3.....	7
Addressed Issues in Release 10.7.3.....	9
Known Issues in Release 10.7.3.....	10
Earlier 10.7 Releases.....	11
Release 1: 10.7.1 New Features and Addressed Issues.....	11
New Hardware Supported.....	11
Addressed Issues in Release 10.7.1.....	12
Release 2: 10.7.2 New Features and Addressed Issues.....	12
New Hardware Support.....	12



Abstract

The IQ Engine v10.7.3 release notes provide a technical overview of new feature implementations, resolved issues, and outstanding problems for Extreme Networks hardware and management platforms. This release introduces advanced radio configurations for the AP5020, including dual-band and tri-band modes supporting 6 GHz and 5 GHz frequencies, as well as enhanced WPA3+WPA2-Enterprise transition mode across legacy and 6 GHz bands. Additional features include 802.11mc support and iBeacon cloud reporting for AP5020 models. The release also extends 6 GHz radio support to Wi-Fi 6E and Wi-Fi 7 access points in countries like Taiwan, the Philippines, and Pakistan. Key resolved issues address authentication timeouts for 802.1x SSIDs on MacBooks, AP302W kernel crashes, and QoS misconfigurations affecting WMM contention window values. Persistent known issues include WPA3 client association problems with band steering enabled and boot failures on AP devices using uncertified micro-USB cables. The document is designed for network administrators and engineers responsible for deploying and managing Extreme Networks access points, especially in environments utilizing the IQ Engine across various AP series models.



General Release Information for Release 10.7.3

Release Date

September 2024

Abstract

The IQ Engine v10.7.3 release notes provide a technical overview of new feature implementations, resolved issues, and outstanding problems for Extreme Networks hardware and management platforms. This release introduces advanced radio configurations for the AP5020, including dual-band and tri-band modes supporting 6 GHz and 5 GHz frequencies, as well as enhanced WPA3+WPA2-Enterprise transition mode across legacy and 6 GHz bands. Additional features include 802.11mc support and iBeacon cloud reporting for AP5020 models. The release also extends 6 GHz radio support to Wi-Fi 6E and Wi-Fi 7 access points in countries like Taiwan, the Philippines, and Pakistan. Key resolved issues address authentication timeouts for 802.1x SSIDs on MacBooks, AP302W kernel crashes, and QoS misconfigurations affecting WMM contention window values. Persistent known issues include WPA3 client association problems with band steering enabled and boot failures on AP devices using uncertified micro-USB cables. The document is designed for network administrators and engineers responsible for deploying and managing Extreme Networks access points, especially in environments utilizing the IQ Engine across various AP series models.

New Hardware Supported

There is no new hardware supported for Release 10.7.3.

Hardware Platforms Supported

- AP650
- AP650X
- AP305C/CX
- AP305C-1
- AP302W
- AP510C/CX
- AP410C
- AP410C-1

- AP460C
- AP460S6C
- AP460S12C
- AP3000
- AP3000X
- AP4000
- AP4000-1
- AP5010
- AP5020
- AP5050D
- AP5050U

Management Platforms Supported

ExtremeCloud IQ 24.6.0 and later

Related Topics

[New Features in Release 10.7.3](#) on page 7

[Addressed Issues in Release 10.7.3](#) on page 9

[Known Issues in Release 10.7.3](#) on page 10



New Features in Release 10.7.3

Table 1: New features in 10.7.3

Feature ID	New feature	Description
HOS-20170	AP5020 Radio Mode Configuration Phase 2 (mode 5, 6)	The AP5020 supports two new radio modes: <ul style="list-style-type: none"> • Mode 5 (Dual 5 GHz w/ 2.4 GHz: 5 GHz-Low (Radio 1), 5 GHz-High (Radio 2), 2.4 GHz Radio 3) • Mode 6 (Dual 6 GHz w/ 5 GHz): 6 GHz-Low (Radio 1), 5 GHz-Full (Radio 2), 6 GHz-High (Radio 3)
HOS-20275	IQ Engine to Support WPA3+WPA2-Enterprise Transition Mode with 6GHz	We enhanced IQ Engine to support transition mode on the legacy bands (2.4 GHz and 5 GHz) while simultaneously supporting the 6 GHz band. This enhancement introduces a new Protected Management Frames (PMF) setting, auto . For configuration options and the corresponding security settings, see ExtremeCloud IQ User Guide .
HOS-20867	AP5020: Support for 802.11mc	The AP5020 now supports 802.11mc.
HOS-20688	AP5020: Support for enhanced packet capture	The AP5020 now supports enhanced packet capture.
HOS-20782	AP5020: Support for dynamic packet capture	The AP5020 now supports dynamic packet capture.
HOS-20947	AP5020: Enable iBeacon 'Cloud Reporting' Service	We enabled the Cloud Reporting element for iBeacon for this release.
HOS-20998	Enable 6 GHz Radio for Taiwan for all Wi-Fi 6E and Wi-Fi 7 APs	We enabled 6 GHz radio support for all Wi-Fi 6E and Wi-Fi 7 access points, for Taiwan.
HOS-21002	Enable 6 GHz Radio for Philippines for all Wi-Fi 6E and Wi-Fi 7 APs	We enabled 6 GHz radio support for all Wi-Fi 6E and Wi-Fi 7 access points, for Philippines.
HOS-21004	Enable 6 GHz Radio for Pakistan for all Wi-Fi 6E and Wi-Fi 7 APs	We enabled 6 GHz radio support for all Wi-Fi 6E and Wi-Fi 7 access points, for Pakistan.
HOS-21160	Add Brunei for AP410C	We added support for AP410C in Brunei.

Table 1: New features in 10.7.3 (continued)

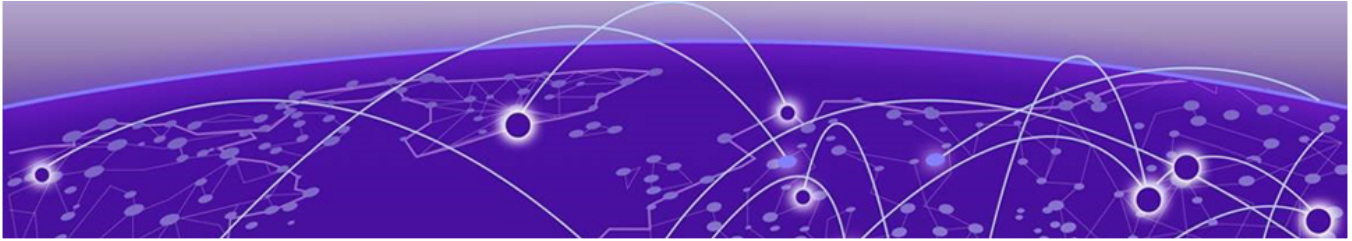
Feature ID	New feature	Description
HOS-21176	Add El Salvador and Trinidad & Tobago for AP5010, AP4000, AP3000 and AP5050D	We added support for AP5010, AP4000, AP3000 and AP5050D in El Salvador and Trinidad.
HOS-21179	Add Algeria for AP305C-WR	We added support for AP305C-WR in Algeria.



Addressed Issues in Release 10.7.3

Table 2: Addressed issues in 10.7.3

Issue ID	Description
CFD-9737 (2819337, 02904872)	We resolved an issue with Macbook clients unable to connect to 802.1x SSIDs and receiving "could not be joined" errors. We increased the auth timeout for Macbooks.
CFD-11024 (02918537)	We resolved an issue with the AP5010-WW combining SSIDs in the "show acsp neighbor" list.
CFD-11961 (02973056)	We resolved an issue where redirection to an external Captive Web Portal using IP firewall redirect rules failed if the Management Options > Disable WebUI without the disable CWP setting was selected.
CFD-12216 (02994322)	We resolved an issue with the output of "show acsp neighbor" showing incorrect values for the RSSI of neighboring access points.
HOS-21270	We rolled back the LED behavior to 10.6.6 for the AP5010. The AP LED is solid white, with AT power and up. Slow-blinking white indicates that power is below AT (for example, AF).



Known Issues in Release 10.7.3

Table 3: Known issues in 10.7.3

Issue ID	Description
HOS-17683	Some WPA3 clients cannot associate to the AP4000 properly when band steering is enabled. Workaround: Disable band steering.
HOS-18313	AP5010, AP5050D, and AP5050U devices will not boot when some non-Extreme micro-USB cables are connected. Note: For all Extreme Networks access points, use the Extreme Networks certified ACC-WIFI-MICRO-USB console cable. Other MICRO-USB console cables have not been certified by Extreme Networks. Workaround: Use an Extreme Networks certified console cable, or plug in the cable after the AP boots.



Earlier 10.7 Releases

[Release 1: 10.7.1 New Features and Addressed Issues](#) on page 11

[Release 2: 10.7.2 New Features and Addressed Issues](#) on page 12

The following sections provide information about changes for earlier IQ Engine 10.7 releases.

Release 1: 10.7.1 New Features and Addressed Issues

New Hardware Supported

Release 10.7.1 adds support for the AP5020.

Table 4: New features in 10.7.1

Feature ID	New feature	Description
HOS-18819	AP5020: Bring up Multi BLE for Dual IoT Radio	For AP5020, we changed the iBeacon defaults. Old Defaults: <ul style="list-style-type: none"> • UUID: 4165726F686976654E6574776F726B73 (AerohiveNetworks) • MAJOR: 1 • MINOR: 1 New Defaults: <ul style="list-style-type: none"> • UUID: 00000000-0000-0000-0000-000000000000 • MAJOR: 0 • MINOR: 0
HOS-20002	AP5020 SDR Mode Configuration Phase 1 (Mode1 & Mode3)	The AP5020 supports two radio modes with IQ Engine 10.7r1: <ul style="list-style-type: none"> • Mode 1 (Tri-Radio): 2.4 GHz (Radio-1), 5 GHz (Radio-2), 6 GHz (Radio-3) • Mode 2 (Dual 5 GHz w/ 6 GHz): 5 GHz (Radio-1), 5 GHz (Radio-2), 6 GHz (Radio-3)
HOS-20184	AP5020 - 320Mhz support	We added AP5020 (WiFi 7) support for the 320 MHz channel, on the 6 GHz radio.

Table 4: New features in 10.7.1 (continued)

Feature ID	New feature	Description
HOS-20191	AP5020 : 4096-QAM – 6G radio only	We added AP5020 support for 4096-QAM on the 6 GHz radio.
HOS-20501	Add Tier 1 Countries for GA release AP5020	We added support for the AP5020 (Wi-Fi7) Access Point to: USA, Canada, EU, Puerto Rico, Colombia, and United Kingdom
HOS-20503	Add all Tier 1A Countries for AP5020	We added support for the AP5020 (Wi-Fi7) Access Point to: Australia, New Zealand, Brazil, Mexico, Japan, South Korea, Singapore, South Africa, and UAE.
HOS-20589	Wi-Fi7 802.11BE features 24r4 / 10.7.1	We added Phase 1 Wi-Fi 7 (802.11be) features to IQ Engine.
HOS-20608	AP5020 SDR Phase 1: Allow only access mode on Wi-Fi interfaces	The AP5020 provides support for client Access Mode only on the Wi-Fi interfaces. Mesh, sensor-mode and client mode support are currently not supported.

Addressed Issues in Release 10.7.1

There are no new addressed issues for Release 10.7.1.

Release 2: 10.7.2 New Features and Addressed Issues

New Hardware Support

There is no new hardware supported for Release 10.7.2.

Table 5: New features in 10.7.2

Feature ID	New feature	Description
HOS-18946	AFC: GA Ready AFC Solution	AFC is now supported on IQ Engine specifically for the AP5050U & AP5050D. AFC support is a requirement for Standard Power use for outdoor 6 GHz radios. The AP must coordinate channel and power availability from an AFC SaaS database before transmitting.
	Thread router—Fix mdns advertisement when using non-default vlan	We resolved an issue with mDNS advertisement when using non-default VLAN.

Table 6: Addressed issues in 10.7.2

Issue ID	Description
CFD-9256 (02740906, 02762111, 02858831)	IQE: ASCOM iP62 randomly drops calls on roaming failures.
CFD-10640 (02903895)	The AP302W Kernel and Hardware Watchdog crashes on 10.6.5.
CFD-10962 (02926088)	Universal APs: Beacons do not show updated WMM QoS values for Contention Window Min and Max.
CFD-10995 (02901029)	The length of ROKH-ID in the Reassociation Response is incorrect, causing an ROKH-ID mismatch and some clients to drop down the connectivity accordingly.
CFD-11040 (02929452)	[IQE] Delta config push issue sometimes causes ACL to not work as the AP IP-policy (firewall).
CFD-11050 (02921799)	[IQE] AP510C 10.6.6 getting "ah_auth" crash, often causing the client to reconnect, due to 32 characters limit.
CFD-11167 (02938970)	PPSK self registration: Security vulnerability with captive portal solution.
CFD-11169 (02918590)	Improper redirect—PPSK Self registration.
CFD-11304 (02946092)	AP5010s unable to establish a CAPWAP connection until after reset.
HOS-20556	We increased the Dynamic Packet Capture file size from 50kb to 100k to address a scenario where captures were not showing up.
HOS-20803	We resolved an issue with Client Monitor 2.0 and Dynamic Packet Capture not working for WPA3-ENT protected SSIDs.
HOS-20992	We resolved an issue with the AP5020 ETH0 Wired speed showing as 10Mbps instead of 10Gbps on the D360 Wired Interface.