



IQ Engine v10.7.5c Release Notes

New Features, Fixes, and Known Issues

9039118-02 Rev AB
April 2025



Copyright © 2025 Extreme Networks, Inc. All rights reserved.

Legal Notice

Extreme Networks, Inc. reserves the right to make changes in specifications and other information contained in this document and its website without prior notice. The reader should in all cases consult representatives of Extreme Networks to determine whether any such changes have been made.

The hardware, firmware, software or any specifications described or referred to in this document are subject to change without notice.

Trademarks

Extreme Networks and the Extreme Networks logo are trademarks or registered trademarks of Extreme Networks, Inc. in the United States and/or other countries.

All other names (including any product names) mentioned in this document are the property of their respective owners and may be trademarks or registered trademarks of their respective companies/owners.

For additional information on Extreme Networks trademarks, see: <https://www.extremenetworks.com/about-extreme-networks/company/legal/trademarks>

Open Source Declarations

Some software files have been licensed under certain open source or third-party licenses.

End-user license agreements and open source declarations can be found at: <https://www.extremenetworks.com/support/policies/open-source-declaration/>

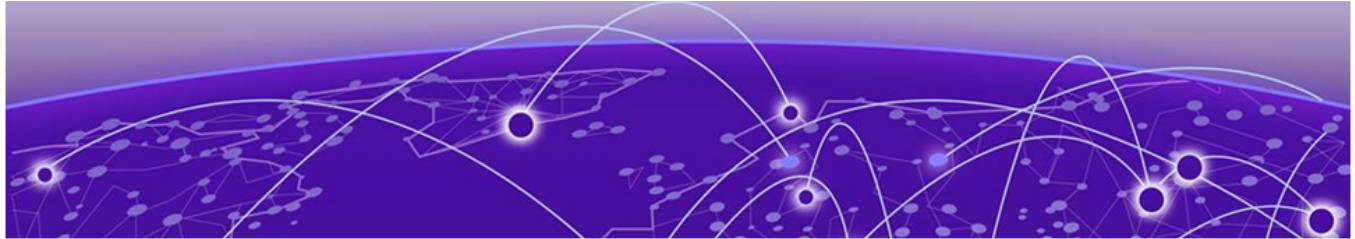
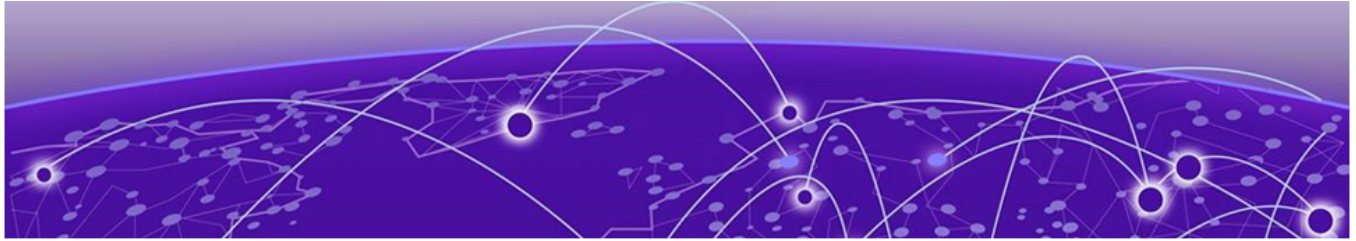


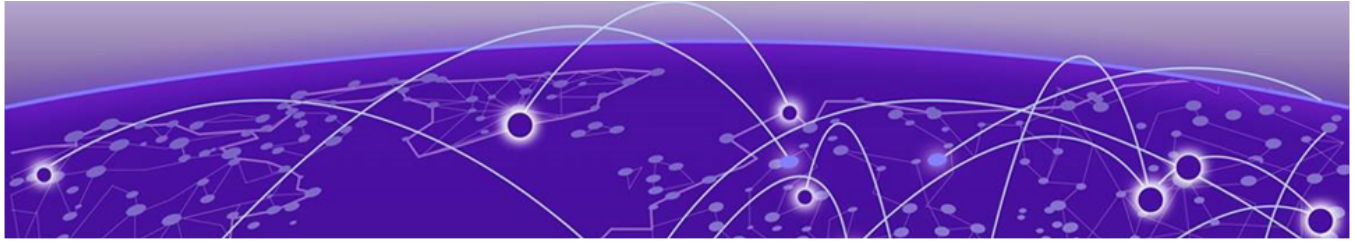
Table of Contents

Abstract.....	iv
Help and Support.....	v
Subscribe to Product Announcements.....	v
General Release Information for Release 10.7.5c.....	7
Release Date.....	7
New Hardware Supported.....	7
Hardware Platforms Supported.....	7
Management Platforms Supported.....	7
New Features in Release 10.7.5c.....	8
Addressed Issues in Release 10.7.5c.....	9
Known Issues in Release 10.7.5c.....	10
Earlier 10.7 Releases.....	11
Release 1: 10.7.1 New Features and Addressed Issues.....	11
New Hardware Supported.....	11
New Features in 10.7.1.....	12
Addressed Issues in Release 10.7.1.....	12
Release 2: 10.7.2 New Features and Addressed Issues.....	13
New Hardware Support.....	13
New Features in 10.7.2.....	13
Addressed Issues in 10.7.2.....	13
Release 3: 10.7.3 New Features and Addressed Issues.....	14
New Hardware Support.....	14
New Features in 10.7.3.....	14
Addressed Issues in 10.7.3.....	15
Release 4: 10.7.5 New Features and Addressed Issues.....	15
New Hardware Support.....	15
New Features in 10.7.5.....	16
Addressed Issues in 10.7.5.....	17
Release 5: 10.7.5b New Features and Addressed Issues.....	18
New Hardware Support.....	18
New Features in 10.7.5b.....	18
Addressed Issues in 10.7.5b.....	18



Abstract

The release notes for IQ Engine version 10.7.5c detail the supported hardware platforms, management platforms, addressed issues, and known issues. This release supports specific access point models, including AP302W, AP305C, AP510C, AP650, AP3000, AP4000, AP5010, and AP5050, with management compatibility for ExtremeCloud IQ 25.1.0 and later. Key addressed issues include resolving client de-authentication frame reception problems and WPA3 client association issues. Known issues involve login credential timeouts on AP5020 devices, WPA3 client association problems with band steering enabled, and boot issues with non-Extreme micro-USB cables. The document also summarizes updates and fixes from earlier 10.7 releases, highlighting improvements in radio mode configurations, enhanced packet capture, and support for new geographic regions. Designed for IT professionals, these release notes provide essential information for managing and troubleshooting IQ Engine deployments.



Help and Support

If you require assistance, contact Extreme Networks using one of the following methods:

Extreme Portal

Search the GTAC (Global Technical Assistance Center) knowledge base; manage support cases and service contracts; download software; and obtain product licensing, training, and certifications.

The Hub

A forum for Extreme Networks customers to connect with one another, answer questions, and share ideas and feedback. This community is monitored by Extreme Networks employees, but is not intended to replace specific guidance from GTAC.

Call GTAC

For immediate support: (800) 998 2408 (toll-free in U.S. and Canada) or 1 (408) 579 2800. For the support phone number in your country, visit www.extremenetworks.com/support/contact.

Before contacting Extreme Networks for technical support, have the following information ready:

- Your Extreme Networks service contract number, or serial numbers for all involved Extreme Networks products
- A description of the failure
- A description of any actions already taken to resolve the problem
- A description of your network environment (such as layout, cable type, other relevant environmental information)
- Network load at the time of trouble (if known)
- The device history (for example, if you have returned the device before, or if this is a recurring problem)
- Any related RMA (Return Material Authorization) numbers

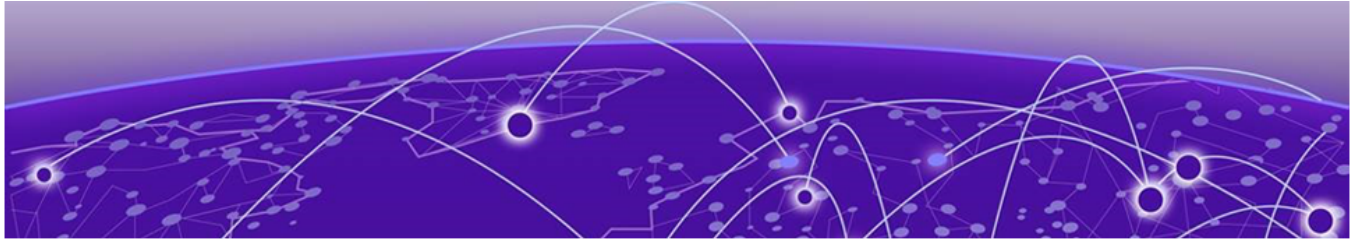
Subscribe to Product Announcements

You can subscribe to email notifications for product and software release announcements, Field Notices, and Vulnerability Notices.

1. Go to [The Hub](#).
2. In the list of categories, expand the **Product Announcements** list.
3. Select a product for which you would like to receive notifications.

4. Select **Subscribe**.
5. To select additional products, return to the **Product Announcements** list and repeat steps 3 and 4.

You can modify your product selections or unsubscribe at any time.



General Release Information for Release 10.7.5c

Release Date

April 2025

New Hardware Supported

There is no new hardware supported for Release 10.7.5c.

Hardware Platforms Supported

- AP3000
- AP3000X
- AP5010
- AP5010U
- AP5050D
- AP5050U

Management Platforms Supported

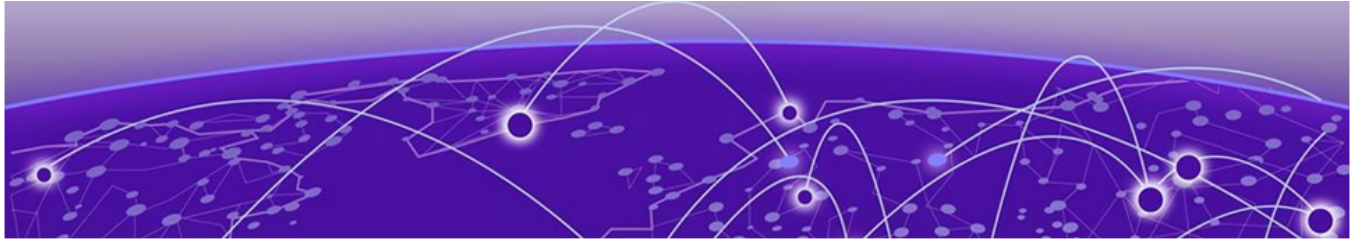
ExtremeCloud IQ 25.1.0 and later

Related Links

[New Features in Release 10.7.5c](#) on page 8

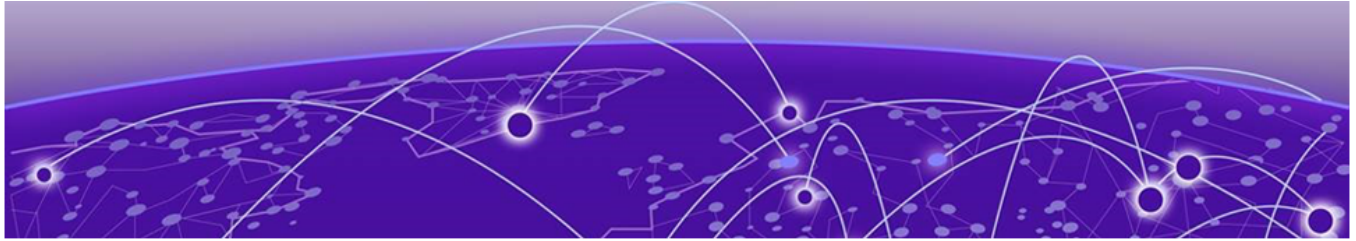
[Addressed Issues in Release 10.7.5c](#) on page 9

[Known Issues in Release 10.7.5c](#) on page 10



New Features in Release 10.7.5c

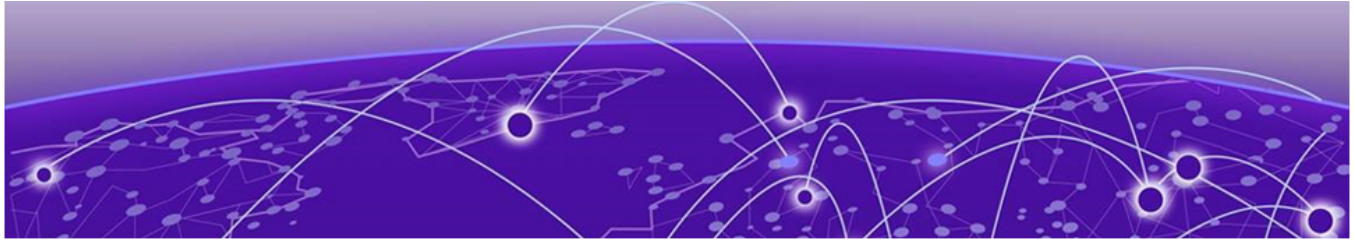
There are no new features for Release 10.7.5c.



Addressed Issues in Release 10.7.5c

Table 1: Addressed issues in 10.7.5c

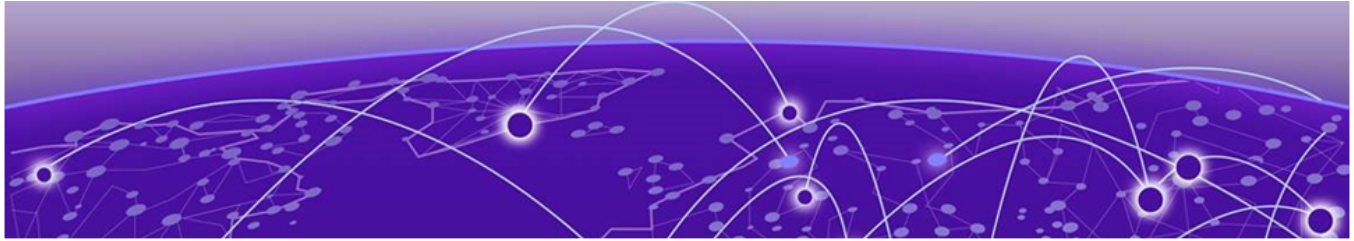
Issue ID	Description
HOS-22661	We resolved an issue where connected clients did not receive the de-authentication frame for a CoA from the RADIUS server.



Known Issues in Release 10.7.5c

Table 2: Known issues in 10.7.5c

Issue ID	Description
CFD-13308 (03062270)	AP5020 devices running IQ Engine 10.7.3 to 10.7.5b do not allow sufficient time to enter log-in credentials. Workaround: Copy the password and paste it within 10 seconds to avoid the timeout.
HOS-17683	Some WPA3 clients cannot associate with the AP4000 properly when band steering is enabled. Workaround: Disable band steering.
HOS-18313	AP5010, AP5050D, and AP5050U devices will not boot when some non-Extreme micro-USB cables are connected. Note: For all Extreme Networks access points, use the Extreme Networks certified ACC-WIFI-MICRO-USB console cable. Other MICRO-USB console cables have not been certified by Extreme Networks. Workaround: Use an Extreme Networks certified console cable, or plug in the cable after the AP boots.



Earlier 10.7 Releases

[Release 1: 10.7.1 New Features and Addressed Issues](#) on page 11

[Release 2: 10.7.2 New Features and Addressed Issues](#) on page 13

[Release 3: 10.7.3 New Features and Addressed Issues](#) on page 14

[Release 4: 10.7.5 New Features and Addressed Issues](#) on page 15

[Release 5: 10.7.5b New Features and Addressed Issues](#) on page 18

The following sections provide information about changes for earlier IQ Engine 10.7 releases.

Release 1: 10.7.1 New Features and Addressed Issues

New Hardware Supported

Release 10.7.1 adds support for the AP5020.

New Features in 10.7.1

Feature ID	New feature	Description
HOS-18819	AP5020: Bring up Multi BLE for Dual IoT Radio	For AP5020, we changed the iBeacon defaults. Old Defaults: <ul style="list-style-type: none"> • UUID: 4165726F686976654E6574776F726B73 (AerohiveNetworks) • MAJOR: 1 • MINOR: 1 New Defaults: <ul style="list-style-type: none"> • UUID: 00000000-0000-0000-0000-00000000 00000 • MAJOR: 0 • MINOR: 0
HOS-20002	AP5020 SDR Mode Configuration Phase 1 (Mode1 & Mode3)	The AP5020 supports two radio modes with IQ Engine 10.7r1: <ul style="list-style-type: none"> • Mode 1 (Tri-Radio): 2.4 GHz (Radio-1), 5 GHz (Radio-2), 6 GHz (Radio-3) • Mode 2 (Dual 5 GHz w/ 6 GHz): 5 GHz (Radio-1), 5 GHz (Radio-2), 6 GHz (Radio-3)
HOS-20184	AP5020 - 320Mhz support	We added AP5020 (WiFi 7) support for the 320 MHz channel, on the 6 GHz radio.
HOS-20191	AP5020 : 4096-QAM – 6G radio only	We added AP5020 support for 4096-QAM on the 6 GHz radio.
HOS-20501	Add Tier 1 Countries for GA release AP5020	We added support for the AP5020 (Wi-Fi7) Access Point to: USA, Canada, EU, Puerto Rico, Colombia, and United Kingdom
HOS-20503	Add all Tier 1A Countries for AP5020	We added support for the AP5020 (Wi-Fi7) Access Point to: Australia, New Zealand, Brazil, Mexico, Japan, South Korea, Singapore, South Africa, and UAE.
HOS-20589	Wi-Fi7 802.11BE features 24r4 / 10.7.1	We added Phase 1 Wi-Fi 7 (802.11be) features to IQ Engine.
HOS-20608	AP5020 SDR Phase 1: Allow only access mode on Wi-Fi interfaces	The AP5020 provides support for client Access Mode only on the Wi-Fi interfaces. Mesh, sensor-mode and client mode support are currently not supported.

Addressed Issues in Release 10.7.1

There are no new addressed issues for Release 10.7.1.

Release 2: 10.7.2 New Features and Addressed Issues

New Hardware Support

There is no new hardware supported for Release 10.7.2.

New Features in 10.7.2

Feature ID	New feature	Description
HOS-18946	AFC: GA Ready AFC Solution	AFC is now supported on IQ Engine specifically for the AP5050U & AP5050D. AFC support is a requirement for Standard Power use for outdoor 6 GHz radios. The AP must coordinate channel and power availability from an AFC SaaS database before transmitting.
HOS-20824	Thread router—Fix mDNS advertisement when using non-default VLAN	We resolved an issue with mDNS advertisement when using non-default VLAN.

Addressed Issues in 10.7.2

Issue ID	Description
CFD-9256 (02740906, 02762111, 02858831)	IQE: ASCOM iP62 randomly drops calls on roaming failures.
CFD-10640 (02903895)	The AP302W Kernel and Hardware Watchdog crashes on 10.6.5.
CFD-10962 (02926088)	Universal APs: Beacons do not show updated WMM QoS values for Contention Window Min and Max.
CFD-10995 (02901029)	The length of ROKH-ID in the Reassociation Response is incorrect, causing an ROKH-ID mismatch and some clients to drop down the connectivity accordingly.
CFD-11040 (02929452)	[IQE] Delta config push issue sometimes causes ACL to not work as the AP IP-policy (firewall).
CFD-11050 (02921799)	[IQE] AP510C 10.6.6 getting "ah_auth" crash, often causing the client to reconnect, due to 32 characters limit.
CFD-11167 (02938970)	PPSK self registration: Security vulnerability with captive portal solution.
CFD-11169 (02918590)	Improper redirect—PPSK Self registration.
CFD-11304 (02946092)	AP5010s unable to establish a CAPWAP connection until after reset.
HOS-20556	We increased the Dynamic Packet Capture file size from 50kb to 100k to address a scenario where captures were not showing up.

Issue ID	Description
HOS-20803	We resolved an issue with Client Monitor 2.0 and Dynamic Packet Capture not working for WPA3-ENT protected SSIDs.
HOS-20992	We resolved an issue with the AP5020 ETH0 Wired speed showing as 10Mbps instead of 10Gbps on the D360 Wired Interface.

Release 3: 10.7.3 New Features and Addressed Issues

New Hardware Support

There is no new hardware supported for Release 10.7.3.

New Features in 10.7.3

Feature ID	New feature	Description
HOS-20170	AP5020 Radio Mode Configuration Phase 2 (mode 5, 6)	The AP5020 supports two new radio modes: <ul style="list-style-type: none"> Mode 5 (Dual 5 GHz w/ 2.4 GHz: 5 GHz-Low (Radio 1), 5 GHz-High (Radio 2), 2.4 GHz Radio 3) Mode 6 (Dual 6 GHz w/ 5 GHz): 6 GHz-Low (Radio 1), 5 GHz-Full (Radio 2), 6 GHz-High (Radio 3)
HOS-20275	IQ Engine to Support WPA3+WPA2-Enterprise Transition Mode with 6GHz	We enhanced IQ Engine to support transition mode on the legacy bands (2.4 GHz and 5 GHz) while simultaneously supporting the 6 GHz band. This enhancement introduces a new Protected Management Frames (PMF) setting, auto . For configuration options and the corresponding security settings, see ExtremeCloud IQ User Guide .
HOS-20867	AP5020: Support for 802.11mc	The AP5020 now supports 802.11mc.
HOS-20688	AP5020: Support for enhanced packet capture	The AP5020 now supports enhanced packet capture.
HOS-20782	AP5020: Support for dynamic packet capture	The AP5020 now supports dynamic packet capture.
HOS-20947	AP5020: Enable iBeacon 'Cloud Reporting' Service	We enabled the Cloud Reporting element for iBeacon for this release.
HOS-20998	Enable 6 GHz Radio for Taiwan for all Wi-Fi 6E and Wi-Fi 7 APs	We enabled 6 GHz radio support for all Wi-Fi 6E and Wi-Fi 7 access points, for Taiwan.
HOS-21002	Enable 6 GHz Radio for Philippines for all Wi-Fi 6E and Wi-Fi 7 APs	We enabled 6 GHz radio support for all Wi-Fi 6E and Wi-Fi 7 access points, for Philippines.

Feature ID	New feature	Description
HOS-21004	Enable 6 GHz Radio for Pakistan for all Wi-Fi 6E and Wi-Fi 7 APs	We enabled 6 GHz radio support for all Wi-Fi 6E and Wi-Fi 7 access points, for Pakistan.
HOS-21160	Add Brunei for AP410C	We added support for AP410C in Brunei.
HOS-21176	Add El Salvador and Trinidad & Tobago for AP5010, AP4000, AP3000 and AP5050D	We added support for AP5010, AP4000, AP3000 and AP5050D in El Salvador and Trinidad.
HOS-21179	Add Algeria for AP305C-WR	We added support for AP305C-WR in Algeria.

Addressed Issues in 10.7.3

Issue ID	Description
CFD-9737 (2819337, 02904872)	We resolved an issue with Macbook clients unable to connect to 802.1x SSIDs and receiving "could not be joined" errors. We increased the auth timeout for Macbooks.
CFD-11024 (02918537)	We resolved an issue with the AP5010-WW combining SSIDs in the "show acsp neighbor" list.
CFD-11961 (02973056)	We resolved an issue where redirection to an external Captive Web Portal using IP firewall redirect rules failed if the Management Options > Disable WebUI without the disable CWP setting was selected.
CFD-12216 (02994322)	We resolved an issue with the output of "show acsp neighbor" showing incorrect values for the RSSI of neighboring access points.
HOS-21270	We rolled back the LED behavior to 10.6.6 for the AP5010. The AP LED is solid white, with AT power and up. Slow-blinking white indicates that power is below AT (for example, AF).

Release 4: 10.7.5 New Features and Addressed Issues

New Hardware Support

There is no new hardware supported for Release 10.7.5.

New Features in 10.7.5

This release of ExtremeCloud IQ Engine includes various compliance updates.

Feature ID	New feature	Description
HOS-20193	Real-Time Troubleshooting (RTTS) and Packet Capture over Inlets	IQ Engine supports near Real-Time Troubleshooting and datastream on the 6E access points, including AP3000/X, AP5010, and AP5050U/D.
HOS-20268	Support 802.3az Green Ethernet for AP5020	IQ Engine supports Energy-Efficient Ethernet (EEE) or IEEE 802.3az on the AP5020. Enable EEE to permit the network port to switch between an active mode (during data transmission) and idle mode (when there is no Ethernet traffic). With this feature, physical layer transmitters consume less power when they are in a state of idleness or low data activity.
HOS-20481	Hotspot 2.0 Configuration Support for IQ Engine	IQ Engine supports Hotspot 2.0 configuration.
HOS-21081	AFC: Change of channel or power notifications	IQ Engine provides notifications for AFC change of channel or power requests, where the change disables radio, and also for the initial enabling of an AFC controlled radio.
HOS-21083	Generic Scan: Chorus and HTTP Post support for Universal HW 6E APs	IQ Engine supports Chorus and HTTP Post for all Wi-Fi 6E-capable APs.
HOS-21182	WiFi 6 and 6E AP IOT Scans: Remove duplicate entries in HTTP post as default	By default, BLE scans have unique BLE entries. IQ Engine supports a CLI option to remove duplicates that must be turned OFF if you prefer to receive multiple entries for same tag. On WiFi 6E APs this feature supports iBeacon and Generic BLE scans. On WiFi 6 APs, this feature supports iBeacon scans only.
HOS-21196	AP5020/AP4020 IOT Scans: Option to remove duplicate entries in HTTP post	By default, BLE scans have unique BLE entries. IQ Engine supports a CLI option to remove duplicates that must be turned OFF if you prefer to receive multiple entries for same tag. On AP5020 and AP4020, this feature supports iBeacon, Eddystone and Generic BLE scans.
HOS-21205	AP5020: Increase tag entries for HTTP-Post batch reporting	Up to 300 BLE entries are reported per batch interval in HTTP Post. On AP5020, this feature supports iBeacon, Eddystone and Generic BLE scans.
HOS-21208	AP5020 - Upgrade eSDK to 7.1.2	The AP5020 supports eSDK 7.1.2.

Feature ID	New feature	Description
HOS-21284	"RegreSSHion" Vulnerability in OpenSSH	CVE-2024-6387, also known as the "regreSSHion" vulnerability is patched in this release.
HOS-21355	WiFi 6/6E AP: Increase tag entries for HTTP-Post batch reporting	Up to 300 BLE entries are reported per batch interval in HTTP Post. On WiFi 6E APs this feature supports iBeacon and Generic BLE scans. And on WiFi 6 APs this feature supports iBeacon scans only.
HOS-21535	VLAN Counters support on AP5020	IQ Engine supports the Show Interface Vlan Counters command for AP5020.
HOS-21701	HotSpot 2.0 Configuration In IQ Engine—11ax support	To support the ExtremeCloud IQ Hotspot 2.0 feature, the 802.11ax APs (AP305C/X, AP410C, AP510C/X, AP460C/S6C/S12C) must run IQ Engine 10.7.5, or later.
HOS-21829	Fabric-Attach (Autosense) IQ Engine new Default LLDP Handling (3000/X, AP5010, AP5050)	IQ Engine 10.7.5 enables LLDP by default, for AP3000/X, AP5010, and AP5050U/D models.
HOS-21847	Add Port Description (TLV) to LLDP Neighbor (302W & 6E APs)	The Show lldp neighbor command includes the Port Description field.

Addressed Issues in 10.7.5

Issue ID	Description
CFD-11844 (02871771)	We resolved an issue where 802.1x authentication would reoccur on Eth0.
CFD-12152 (02991956, 02994867, 02995713, 02993534, 03007447, 03001635, 03053431)	We resolved an issue where PPSK user authentication failed with incorrect password logs, in 10.7r2 with 802.11r enabled.
CFD-12418 (03007758)	We resolved an issue where, under certain conditions, the DCD Daemon was not running and causing errors on the AP5010.
CFD-12492 (03004220, 03016826)	We resolved an issue where Fabric Attach configurations were being removed on reboot after save config in sCLI.
CFD-12675 (02668167)	We resolved an issue where the CRC firmware check was failing.
CFD-12722 (03022452)	We resolved an issue where users were not receiving credentials after registering for the Guest network through the Captive Web Portal.
CFD-12747 (02928391)	We resolved an issue where one-way audio occurred on the AP5010.
CFD-12756 (02998905, 03051701)	We resolved an issue where Wireshark could not parse gratuitous ARP from AP as an LLC frame.

Issue ID	Description
CFD-12869 (03036308)	We resolved an issue where the Logging flash was full of unnecessary logs, making it difficult to troubleshoot other issues. In releases earlier than 10.7.5, SNMP queries such as <code>snmpwalk -c hivecommunity -v 1 10.254.157.99 .1.3.6.1.4.1.26928.1.2.7.0</code> generated logs similar to <code>ah_dcd: application: handle_ahUptime sec = 1333, msec = 490</code> .
CFD-12871 (03036165)	We resolved an issue where, under certain conditions, AP5020s would become unresponsive and performance would degrade.
CFD-13093 (02928391)	We resolved an issue where Spectralink VoIP phones displayed an Insufficient Bandwidth message after a roam.
HOS-21436, HOS-21437, HOS-21439, HOS-21440, HOS-21441	We resolved various issues where the enhanced packet capture filters did not work.
HOS-21840	We resolved an issue where Wireless clients disconnected from the AP5020 when packet captures were run.
HOS-21941	We resolved an issue where packet captures were unexpectedly ending at 30 seconds on the AP5020.

Release 5: 10.7.5b New Features and Addressed Issues

New Hardware Support

There is no new hardware supported for Release 10.7.5b.

New Features in 10.7.5b

There are no new features for Release 10.7.5b.

Addressed Issues in 10.7.5b

Issue ID	Description
HOS-22272	IQ Engine supports negative altitude (elevation) data.
HOS-22329	We resolved an issue where the AP5050U/D was not receiving spectrum information from the AFC server. The AP continues to send GPS data until it receives the information.