



IQ Engine v10.8.1 Release Notes

New Features, Fixes, and Known Issues

9039242-00 Rev AA
March 2025



Copyright © 2025 Extreme Networks, Inc. All rights reserved.

Legal Notice

Extreme Networks, Inc. reserves the right to make changes in specifications and other information contained in this document and its website without prior notice. The reader should in all cases consult representatives of Extreme Networks to determine whether any such changes have been made.

The hardware, firmware, software or any specifications described or referred to in this document are subject to change without notice.

Trademarks

Extreme Networks and the Extreme Networks logo are trademarks or registered trademarks of Extreme Networks, Inc. in the United States and/or other countries.

All other names (including any product names) mentioned in this document are the property of their respective owners and may be trademarks or registered trademarks of their respective companies/owners.

For additional information on Extreme Networks trademarks, see: <https://www.extremenetworks.com/about-extreme-networks/company/legal/trademarks>

Open Source Declarations

Some software files have been licensed under certain open source or third-party licenses.

End-user license agreements and open source declarations can be found at: <https://www.extremenetworks.com/support/policies/open-source-declaration/>

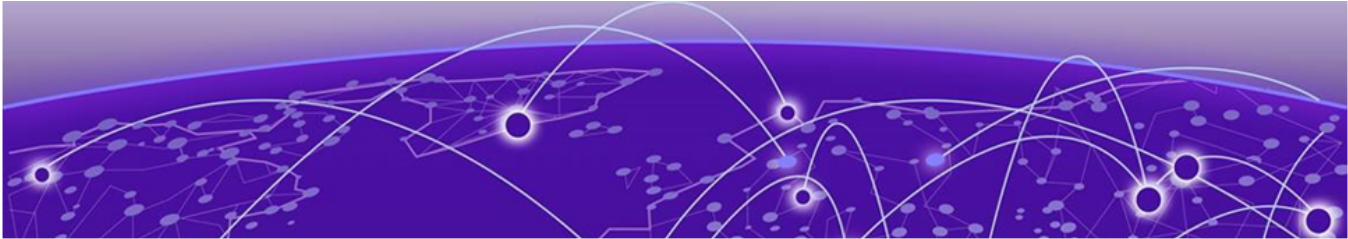


Table of Contents

Abstract..... iv

Help and Support..... v

 Subscribe to Product Announcements..... v

General Release Information for Release 10.8.1..... 7

 Release Date..... 7

 New Hardware Supported..... 7

 Hardware Platforms Supported..... 7

 Management Platforms Supported..... 7

New Features in Release 10.8.1..... 8

Addressed Issues in Release 10.8.1..... 9

Known Issues in Release 10.8.1..... 10



Abstract

The release notes for IQ Engine version 10.8.1 detail new hardware support for AP4020 and AP5020, including features such as Imago Tag ESL support, Wi-Fi mesh support, UL MU-MIMO, DL OFDMA, enhanced packet capture, HotSpot 2.0 configuration, and Energy-Efficient Ethernet (EEE) for AP4020. Addressed issues include increased AUTH timeout values, probe response rate corrections, and broadcasting issues with shut-down SSIDs. Known issues involve WPA3 client association problems with band steering enabled and boot issues with non-Extreme Networks micro-USB cables. For support, the document provides information about Extreme Networks customer service channels.



Help and Support

If you require assistance, contact Extreme Networks using one of the following methods:

Extreme Portal

Search the GTAC (Global Technical Assistance Center) knowledge base; manage support cases and service contracts; download software; and obtain product licensing, training, and certifications.

The Hub

A forum for Extreme Networks customers to connect with one another, answer questions, and share ideas and feedback. This community is monitored by Extreme Networks employees, but is not intended to replace specific guidance from GTAC.

Call GTAC

For immediate support: (800) 998 2408 (toll-free in U.S. and Canada) or 1 (408) 579 2800. For the support phone number in your country, visit www.extremenetworks.com/support/contact.

Before contacting Extreme Networks for technical support, have the following information ready:

- Your Extreme Networks service contract number, or serial numbers for all involved Extreme Networks products
- A description of the failure
- A description of any actions already taken to resolve the problem
- A description of your network environment (such as layout, cable type, other relevant environmental information)
- Network load at the time of trouble (if known)
- The device history (for example, if you have returned the device before, or if this is a recurring problem)
- Any related RMA (Return Material Authorization) numbers

Subscribe to Product Announcements

You can subscribe to email notifications for product and software release announcements, Field Notices, and Vulnerability Notices.

1. Go to [The Hub](#).
2. In the list of categories, expand the **Product Announcements** list.
3. Select a product for which you would like to receive notifications.

4. Select **Subscribe**.
5. To select additional products, return to the **Product Announcements** list and repeat steps 3 and 4.

You can modify your product selections or unsubscribe at any time.



General Release Information for Release 10.8.1

Release Date

March 2025

New Hardware Supported

Release 10.8.1 adds support for AP4020.

Hardware Platforms Supported

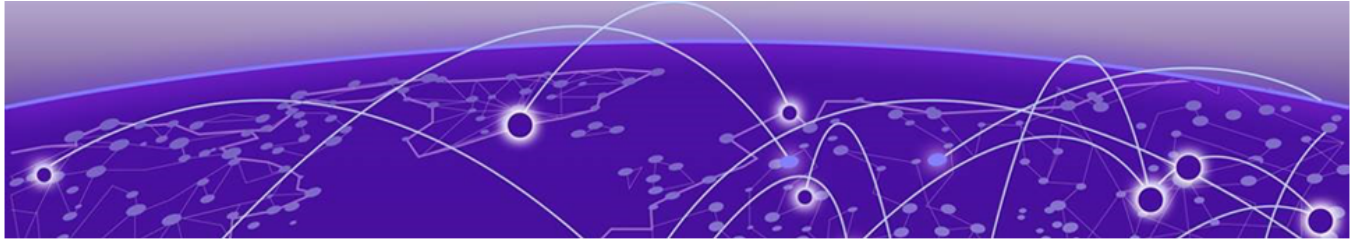
- AP4020
- AP5020

Management Platforms Supported

ExtremeCloud IQ 25.2.0 and later

Related Links

[New Features in Release 10.8.1](#) on page 8
[Addressed Issues in Release 10.8.1](#) on page 9
[Known Issues in Release 10.8.1](#) on page 10



New Features in Release 10.8.1

Table 1: New features in 10.8.1

Feature ID	New feature	Description
HOS-20155	AP4020: Imago Tag ESL Support	The AP4020 supports the VusionGroup ImagoTag ESL dongle.
HOS-20158	AP4020—Wi-Fi mesh support	IQ Engine 10.8.1 supports wireless backhaul mesh for the AP4020.
HOS-20690	AP5020: Wi-Fi 7 11BE—Support for UL MU-MIMO	IQ Engine 10.8.1 supports UL MU-MIMO for the AP5020.
HOS-20722	AP4020: Support for UL MU-MIMO	IQ Engine 10.8.1 supports UL MU-MIMO for the AP4020.
HOS-20734	AP4020: Support for DL OFDMA	IQ Engine 10.8.1 supports downlink OFDMA for the AP4020.
HOS-20754	AP4020: Support for enhanced packet capture	The AP4020 supports Enhanced Packet Capture.
HOS-21715	AP5020: HotSpot 2.0 Configuration in IQ Engine support	IQ Engine 10.8.1 supports Hotspot 2.0 for the AP5020.
HOS-21793	AP5020: FA (Autosense) IQ Engine Default LLDP Handling	IQ Engine 10.8.1 LLDP is enabled by default for the AP5020.
HOS-22152	AP4020: Support 802.3az Green Ethernet	IQ Engine 10.8.1 supports Energy-Efficient Ethernet (EEE) or IEEE 802.3az for the AP4020. This feature allows physical-layer transmitters to consume less power during idle states or low data activity.
HOS-22381	AP4020—"RegreSSHion" Vulnerability in OpenSSH	CVE-2024-6387, also known as the "regreSSHion" vulnerability, is fixed.



Addressed Issues in Release 10.8.1

Table 2: Addressed issues in 10.8.1

Issue ID	Description
CFD-13308	We increased the AUTH timeout value to give users sufficient time to enter the credentials for AP5000 and AP5020.
CFD-13309	We resolved an issue where the AP5020 sent probe responses with a basic rate of 24Mbps instead of the configured 36Mbps.
CFD-13374	We resolved an issue where AP5020 models with shut-down SSIDs were still broadcasting with Open Authentication, even after rebooting.



Known Issues in Release 10.8.1

Table 3: Known issues in 10.8.1

Issue ID	Description
HOS-18313	<p>AP5010, AP5050D, and AP5050U devices will not boot when some non-Extreme micro-USB cables are connected.</p> <p>Note: For all Extreme Networks access points, use the Extreme Networks certified ACC-WIFI-MICRO-USB console cable. Other MICRO-USB console cables have not been certified by Extreme Networks.</p> <p>Workaround: Use an Extreme Networks certified console cable, or plug in the cable after the AP boots.</p>