



IQ Engine v10.8.2 Release Notes

New Features, Fixes, and Known Issues

9039242-01 Rev AA
May 2025



Copyright © 2025 Extreme Networks, Inc. All rights reserved.

Legal Notice

Extreme Networks, Inc. reserves the right to make changes in specifications and other information contained in this document and its website without prior notice. The reader should in all cases consult representatives of Extreme Networks to determine whether any such changes have been made.

The hardware, firmware, software or any specifications described or referred to in this document are subject to change without notice.

Trademarks

Extreme Networks and the Extreme Networks logo are trademarks or registered trademarks of Extreme Networks, Inc. in the United States and/or other countries.

All other names (including any product names) mentioned in this document are the property of their respective owners and may be trademarks or registered trademarks of their respective companies/owners.

For additional information on Extreme Networks trademarks, see: <https://www.extremenetworks.com/about-extreme-networks/company/legal/trademarks>

Open Source Declarations

Some software files have been licensed under certain open source or third-party licenses.

End-user license agreements and open source declarations can be found at: <https://www.extremenetworks.com/support/policies/open-source-declaration/>



Table of Contents

- Abstract..... iv
- Help and Support..... v
 - Subscribe to Product Announcements..... v
- General Release Information for Release 10.8.2..... 7**
 - Release Date..... 7
 - New Hardware Supported..... 7
 - Hardware Platforms Supported..... 7
 - Management Platforms Supported..... 8
- New Features in Release 10.8.2..... 9**
- Addressed Issues in Release 10.8.2.....11**
- Known Issues in Release 10.8.2..... 12**
- Earlier 10.8 Releases..... 13**
 - Release 1: 10.8.1 New Features and Addressed Issues.....13
 - Release Date.....13
 - New Hardware Supported.....13
 - New Features in Release 10.8.1.....13
 - Addressed Issues in Release 10.8.1.....14



Abstract

The release notes for IQ Engine version 10.8.2 provide detailed information on new features, addressed issues, and known problems. This document covers the support for various hardware platforms, including AP4020 and AP5020, and management platforms such as ExtremeCloud IQ 25.3.0 and later. Key new features include client mode support for 2.4 GHz, 5 GHz, and 6 GHz radios, spectrum analyzer capabilities, WPA3 beacon protection, and dynamic packet capture. The release also addresses several issues, such as vulnerabilities detected in HTTP/HTTPS on APs, latency problems with AP5010, and configuration audit errors for local PPSK user groups. Known issues include boot problems with non-Extreme micro-USB cables on certain devices. The document is intended for technical readers and provides comprehensive guidance on configurations, and updates from earlier releases, ensuring users are well-informed about the latest enhancements and fixes.



Help and Support

If you require assistance, contact Extreme Networks using one of the following methods:

Extreme Portal

Search the GTAC (Global Technical Assistance Center) knowledge base; manage support cases and service contracts; download software; and obtain product licensing, training, and certifications.

The Hub

A forum for Extreme Networks customers to connect with one another, answer questions, and share ideas and feedback. This community is monitored by Extreme Networks employees, but is not intended to replace specific guidance from GTAC.

Call GTAC

For immediate support: (800) 998 2408 (toll-free in U.S. and Canada) or 1 (408) 579 2800. For the support phone number in your country, visit www.extremenetworks.com/support/contact.

Before contacting Extreme Networks for technical support, have the following information ready:

- Your Extreme Networks service contract number, or serial numbers for all involved Extreme Networks products
- A description of the failure
- A description of any actions already taken to resolve the problem
- A description of your network environment (such as layout, cable type, other relevant environmental information)
- Network load at the time of trouble (if known)
- The device history (for example, if you have returned the device before, or if this is a recurring problem)
- Any related RMA (Return Material Authorization) numbers

Subscribe to Product Announcements

You can subscribe to email notifications for product and software release announcements, Field Notices, and Vulnerability Notices.

1. Go to [The Hub](#).
2. In the list of categories, expand the **Product Announcements** list.
3. Select a product for which you would like to receive notifications.

4. Select **Subscribe**.
5. To select additional products, return to the **Product Announcements** list and repeat steps 3 and 4.

You can modify your product selections or unsubscribe at any time.



General Release Information for Release 10.8.2

Release Date

May 2025

New Hardware Supported

There is no new hardware supported for Release 10.8.2.

Hardware Platforms Supported

- AP302W
- AP305C
- AP305CX
- AP305C-1
- AP410C
- AP410C-1
- AP460C
- AP460S6C
- AP460S12C
- AP510C
- AP510CX
- AP630
- AP650
- AP650X
- AP3000
- AP3000X
- AP4000
- AP4000-1
- AP4020
- AP5010
- AP5020
- AP5050D
- AP5050U

Management Platforms Supported

ExtremeCloud IQ 25.3.0 and later

Related Links

[New Features in Release 10.8.2](#) on page 9

[Addressed Issues in Release 10.8.2](#) on page 11

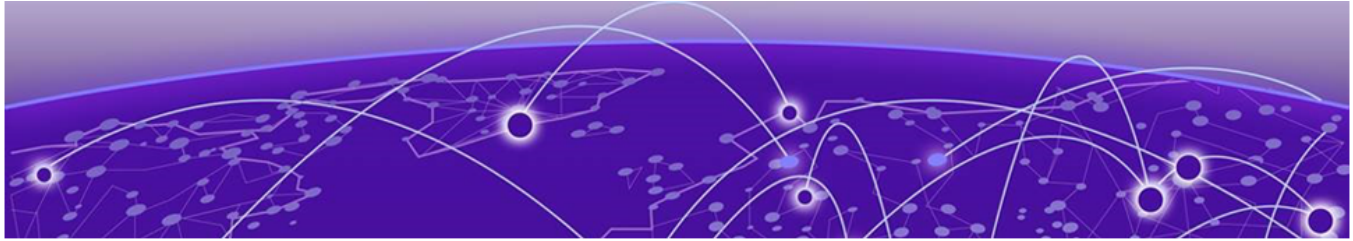
[Known Issues in Release 10.8.2](#) on page 12



New Features in Release 10.8.2

Feature ID	New feature	Description
HOS-18924	AP5020: Client mode support 2.4, 5G , 6G	IQ Engine supports Client Mode on 2.4 GHz, 5 GHz, & 6 GHz radios on the AP5020.
HOS-18929	AP5020: Support for Spectrum Analyzer 2.4G/5G	The 2.4 GHz & 5 GHz radios on the AP5020 support Spectrum Intelligence.
HOS-20276	Enhancement to Reduced Neighbor Report (RNR) - AP3K, AP5010/5050	The AP3000, AP3000X, AP5010, AP5050U, and AP5050D support Enhanced Reduced Neighbor Report (eRNR). This feature adds advanced RNR capability and provides useful information to Wi-Fi 6E/7 clients by probing in the 2.4 and 5 bands about 6 SSID capabilities for the radio housed in the AP and for neighbor APs to which the client could eventually roam. The Co-Located bit in the RNR IE indicates that the 6 GHz radio is housed in the same AP. A value of 0 indicates a different BSSID for a neighboring 6 GHz radio.
HOS-20642	AP5020: Support for WPA3 Beacon Protection	The AP5020 supports Wi-Fi 7 Beacon Protection to protect Wi-Fi beacon frames from disruption or interference.
HOS-20751	AP4020: Support for AKM 24 for WPA3-Personal (SAE)	The AP4020 supports WPA-3 Personal (SAE) AKM 24.
HOS-20752	AP4020: Support for WPA3 Beacon Protection	The AP4020 supports Wi-Fi 7 Beacon Protection to protect Wi-Fi beacon frames from disruption or interference.
HOS-21357	AP4020: Support for Spectrum Analyzer 2.4G/5G	The 2.4 GHz & 5 GHz radios on the AP4020 support Spectrum Intelligence.
HOS-21359	AP4020: Client Mode supports 2.4, 5G, 6G	IQ Engine supports Client Mode on 2.4 GHz, 5 GHz, & 6 GHz radios on the AP4020.
HOS-21537	AP4020: Support for Essentials Sensing 4th radio	IQ Engine supports the 4th radio on the AP4020 reporting to Essentials.
HOS-21713	AP4020: Support for dynamic packet capture	The AP4020 supports Dynamic Packet Capture.
HOS-21979	Port Description (TLV) to LLDP Neighbor (AX & 4000)	We added the "Port Description" to the #show LLDP Neighbor output in IQ Engine (AP305C, AP410C, AP460C, AP305CX, AP460S6, S12, and 4000)

Feature ID	New feature	Description
HOS-22052	HotSpot 2.0 Configuration In IQ Engine for the AP4000	The AP4000 supports HotSpot 2.0.
HOS-22053	HotSpot 2.0 Configuration In IQ Engine for the AP4020	The AP4020 supports HotSpot 2.0.
HOS-22078	Enable the FIPS feature for AP4020	The AP4020 supports Secure-Mode for GovRAMP-compliant RDCs.
HOS-22239	Report BLE Scan Results via HTTPS with Token Renewal for WiFi 6E	WiFi 6E APs support a token-based secure method of sending BLE Data to an HTTPS server.



Addressed Issues in Release 10.8.2

Issue ID	Description
CFD-12903 (03038362)	We resolved an issue where the error "^-- unknown keyword or invalid input" occurred when using CLI Access from ExtremeCloud IQ.
CFD-12949 (03038743)	We resolved an issue where a vulnerability was detected for HTTP/HTTPS on APs running IQ Engine 10.7r3.
CFD-13238 (03056232)	We resolved a latency issue with the AP5010 running IQ Engine Release 10.7.3 or 10.7.5.
CFD-13524 (03074406)	We resolved an issue where local PPSK user groups caused the configuration audit for APs running IQ Engine Release 10.7.5 to report missing users.
CFD-13628 (03082265)	We resolved an issue where some APs in the same management VLAN flooded logs with "pmksa_cache_auth_add". The issue occurred with the 11r feature enabled in ExtremeCloud IQ, when an 11r-supported client connected or disconnected. This issue is fixed in Release 10.8.2 by enabling the log only when debug auth is on.
HOS-22363	We resolved an issue where packet captures for an AP4020 running IQ Engine 10.8.1 using the Enhanced Packet Capture tool in ExtremeCloud IQ did not include beacon frames.
HOS-22445	We resolved an issue with the AP4020 and ADSP-sensor mode and BSS/air-termination, where the sensor successfully sent DeAuth packets, and errors occurred after a few hours.
HOS-22670	We resolved an issue with the error: Check certificates and key files failed. For IQ Engine Release 10.8.2, we strongly recommend updating your certificates to use cryptographic keys of at least 2048 bits with a widely accepted strong algorithm.



Known Issues in Release 10.8.2

Issue ID	Description
HOS-18313	<p>AP5010, AP5050D, and AP5050U devices will not boot when some non-Extreme micro-USB cables are connected.</p> <p>Note: Use the Extreme Networks certified ACC-WIFI-MICRO-USB console cable for all Extreme Networks access points. Other MICRO-USB console cables are not tested and certified by Extreme Networks.</p> <p>Workaround: Use an Extreme Networks-certified console cable, or plug in the cable after the AP boots.</p>
HOS-22705	<p>AP4020 devices running IQ Engine version 10.8.2 might experience a crash when Spectrum Intelligence is used on WiFi0 (2.4 GHz).</p> <p>Note: Spectrum Intelligence functions as expected on the 5 GHz band.</p>



Earlier 10.8 Releases

[Release 1: 10.8.1 New Features and Addressed Issues](#) on page 13

The following sections provide information about changes for earlier IQ Engine 10.8 releases.

Release 1: 10.8.1 New Features and Addressed Issues

Release Date

March 2025

New Hardware Supported

Release 10.8.1 adds support for the AP4020.

New Features in Release 10.8.1

Feature ID	New feature	Description
HOS-20155	AP4020: Imago Tag ESL Support	The AP4020 supports the VusionGroup ImagoTag ESL dongle.
HOS-20158	AP4020—Wi-Fi mesh support	IQ Engine 10.8.1 supports wireless backhaul mesh for the AP4020.
HOS-20690	AP5020: Wi-Fi 7 11BE—Support for UL MU-MIMO	IQ Engine 10.8.1 supports UL MU-MIMO for the AP5020.
HOS-20722	AP4020: Support for UL MU-MIMO	IQ Engine 10.8.1 supports UL MU-MIMO for the AP4020.
HOS-20734	AP4020: Support for DL OFDMA	IQ Engine 10.8.1 supports downlink OFDMA for the AP4020.
HOS-20754	AP4020: Support for enhanced packet capture	The AP4020 supports Enhanced Packet Capture.
HOS-21715	AP5020: HotSpot 2.0 Configuration in IQ Engine support	IQ Engine 10.8.1 supports Hotspot 2.0 for the AP5020.
HOS-21793	AP5020: FA (Autosense) IQ Engine Default LLDP Handling	IQ Engine 10.8.1 LLDP is enabled by default for the AP5020.

Feature ID	New feature	Description
HOS-22152	AP4020: Support 802.3az Green Ethernet	IQ Engine 10.8.1 supports Energy-Efficient Ethernet (EEE) or IEEE 802.3az for the AP4020. This feature allows physical-layer transmitters to consume less power during idle states or low data activity.
HOS-22381	AP4020—"RegreSSHion" Vulnerability in OpenSSH	CVE-2024-6387, also known as the "regreSSHion" vulnerability, is fixed.

Addressed Issues in Release 10.8.1

Issue ID	Description
CFD-13308	We increased the AUTH timeout value to give users sufficient time to enter the credentials for AP5000 and AP5020.
CFD-13309	We resolved an issue where the AP5020 sent probe responses with a basic rate of 24Mbps instead of the configured 36Mbps.
CFD-13374	We resolved an issue where AP5020 models with shut-down SSIDs were still broadcasting with Open Authentication, even after rebooting.