



Extreme Intuitive Insights v24.3 Release Notes

New Features, Fixes, and Known Issues

9039105-00 Rev AA
October 2024



Copyright © 2024 Extreme Networks, Inc. All rights reserved.

Legal Notice

Extreme Networks, Inc. reserves the right to make changes in specifications and other information contained in this document and its website without prior notice. The reader should in all cases consult representatives of Extreme Networks to determine whether any such changes have been made.

The hardware, firmware, software or any specifications described or referred to in this document are subject to change without notice.

Trademarks

Extreme Networks and the Extreme Networks logo are trademarks or registered trademarks of Extreme Networks, Inc. in the United States and/or other countries.

All other names (including any product names) mentioned in this document are the property of their respective owners and may be trademarks or registered trademarks of their respective companies/owners.

For additional information on Extreme Networks trademarks, see: <https://www.extremenetworks.com/about-extreme-networks/company/legal/trademarks>

Open Source Declarations

Some software files have been licensed under certain open source or third-party licenses.

End-user license agreements and open source declarations can be found at: <https://www.extremenetworks.com/support/policies/open-source-declaration/>

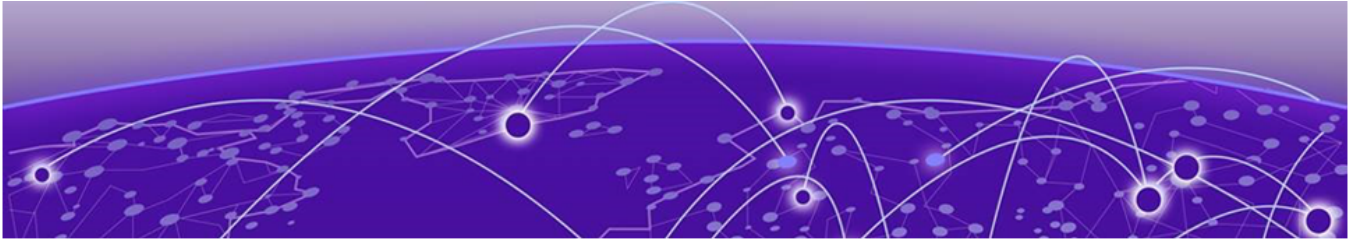


Table of Contents

Abstract.....	iv
General Release Information.....	5
Release Date.....	5
Hardware platforms supported.....	5
Minimum software required.....	5
ExtremeCloud IQ Information.....	6
Android Agent Information.....	6
New Features.....	7
Software Fixes.....	8
Known Issues.....	8



Abstract

These release notes for the Extreme Networks Extreme Intuitive Insights version 24.3, issued in October 2024, highlight new features, software fixes, and known issues. The release supports Android-based Zebra Technologies devices, requiring specific LifeGuard versions for compatibility. Key updates include the common services Audit Log implementation, an enhanced Loss Prevention Report, and a New Battery Charging widget. Fixes address issues with processing the WLAN638 Voice Consolidation Report and New Agent PCAP retry behavior. This document provides essential updates and troubleshooting information for users updating or implementing Extreme Intuitive Insights.



General Release Information

Release Date

October 2024

Beginning with Extreme Intuitive Insights v24.3, the Extreme Intuitive Insights agent is available on Google Play Store (formerly know as Android Market). Due to this change, it is required to re-install the agent on Zebra devices.

Take the following steps to re-install the agent on Zebra devices:

1. Delete the device from your Extreme Intuitive Insights cloud application.
 - a. Go to **Manage Devices**.
 - b. Select the device.
 - c. Select **Action > Delete**.
2. Uninstall the current Extreme Intuitive Insights agent running on the device.
3. Again, add the serial number of the device to Extreme Intuitive Insights cloud application. Go to **Manage Devices > Add Device**.
4. Install the latest Extreme Intuitive Insights agent on the device. Installation can be done using the Google Play companies' MDM or the distributing apk file available on the [Extreme Networks Support page](#).

Hardware platforms supported

- Android8-based Zebra Technologies devices:
 - TC51, TC51-HC, TC56, TC70x, TC75x, VC80x, MC3300, MC3300R
- Android10, 11 and 13-based Zebra Technologies devices:
 - TC26, PS20, TC52, TC52-HC, TC57, TC72, TC77, TC8300, VC8300, WT6300, CC600, CC6000, EC30, ET51, ET56, L10A, MC3300x, MC3300xR, MC9300

Minimum software required

- For Android8-based Zebra devices: LifeGuard 08; LifeGuard 23 recommended
- For Android10-based Zebra devices: LifeGuard 79; LifeGuard 106 recommended



Note

Be sure to always be on the latest version available on the Zebra [support web site](#).

ExtremeCloud IQ Information

Extreme Intuitive Insights application is currently available only on a four Remote Data Center (RDC) located in Europe and US. Contact your sales representative for more details.

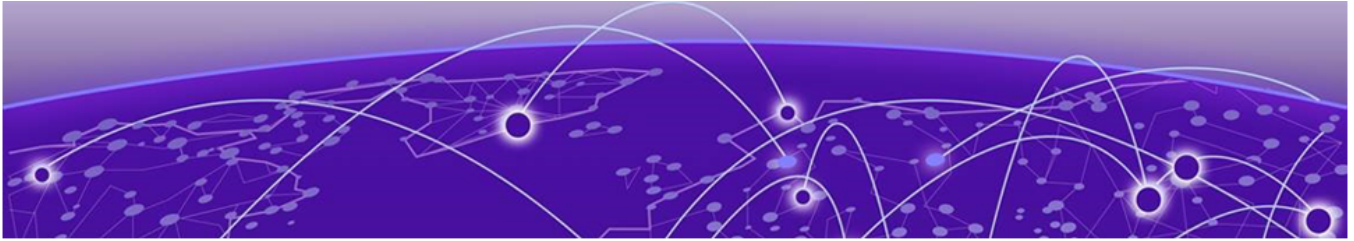


Note

To receive events from Zebra Wireless Insights API, the device needs to have a valid *Zebra Edge Insight standard perpetual license* installed, as well as staged to enable Zebra Wireless Insights API. Contact your Zebra sales representative to order a license. You also need to link the **Extreme Licensing** portal using the **License Manager** application, as well as assign the correct **Role/Application** to the user with the **User Manager** application. See the *Extreme Intuitive Insights Getting Started Guide* for more information.

Android Agent Information

Update the Android agent to the latest version available on the [Extreme Networks Support page](#).



New Features

This release introduces the following features:

Table 1: New Features

ID	Description
EII-382	Implemented the Audit Log feature that is integrated with Common Services.
EII-224	Enhanced the Loss Prevention Report.
EII-470	Added a New Battery Charging widget.



Software Fixes

This release introduces the following software fixes:

Table 2: Software Fixes

ID	Description
EII-462	Processing WLAN638 Voice Consolidation Report
EII-979	New Agent PCAP retry behavior



Note

Additionally, in this release, we have addressed a number of issues with back-end services.

Known Issues

There are no known issues in this release.