



ExtremeCloud Business Insights for Venues Release Notes

New Features and Integration Details

9039164-00 Rev. AA
January 2025



Copyright © 2025 Extreme Networks, Inc. All rights reserved.

Legal Notice

Extreme Networks, Inc. reserves the right to make changes in specifications and other information contained in this document and its website without prior notice. The reader should in all cases consult representatives of Extreme Networks to determine whether any such changes have been made.

The hardware, firmware, software or any specifications described or referred to in this document are subject to change without notice.

Trademarks

Extreme Networks® and the Extreme Networks logo are trademarks or registered trademarks of Extreme Networks, Inc. in the United States and/or other countries.

All other names (including any product names) mentioned in this document are the property of their respective owners and may be trademarks or registered trademarks of their respective companies/owners.

For additional information on Extreme Networks trademarks, see: <https://www.extremenetworks.com/about-extreme-networks/company/legal/trademarks>

Open Source Declarations

Some software files have been licensed under certain open source or third-party licenses.

End-user license agreements and open source declarations can be found at: <https://www.extremenetworks.com/support/policies/open-source-declaration/>

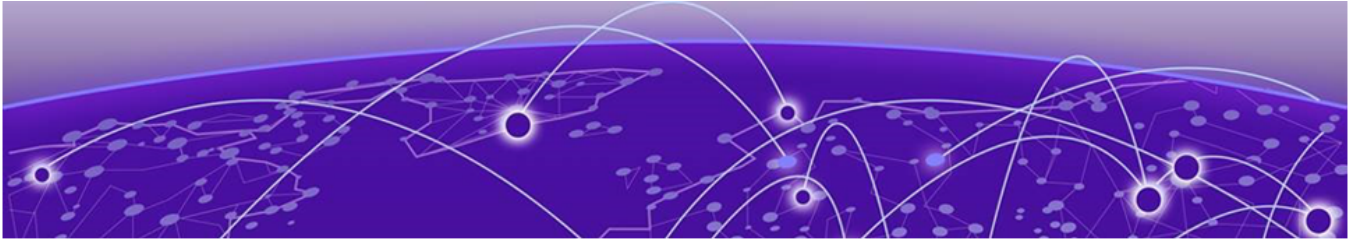


Table of Contents

Abstract.....	iv
General Release Information.....	5
Product Integration Considerations.....	5
Installation Considerations.....	6
What's New.....	6
Product Documentation.....	7



Abstract

The release notes for ExtremeCloud Business Insights for Venues, released in January 2025, introduces key features, integration requirements, and installation considerations. This release of Business Insights introduces weather reports (forecasts and actual) on the historical summary dashboards and proactive chart caching for recently completed events in order to reduce chart loading times. Integration with ExtremeCloud IQ Controller and Site Engine is supported, with options for both virtual and hardware appliances. Consider professional installation by an Extreme Networks technical expert for optimal deployment results.



General Release Information

[Product Integration Considerations](#) on page 5

[Installation Considerations](#) on page 6

[What's New](#) on page 6

[Product Documentation](#) on page 7

These Release Notes cover the latest updates to ExtremeCloud Business Insights for Venues.

Product Integration Considerations

Consider the following when integrating with other Extreme Networks products:

ExtremeCloud IQ Controller

ExtremeCloud IQ Controller includes the following virtual appliances:

- **VMware**
 - VE6120
 - VE6125
- **KVM**
 - VE6120K
 - VE6125K
- **Microsoft Hyper-V**
 - VE6120H

And the following Hardware appliances:

- E2120
- E2122
- E3120
- E3125

The VA2_Inlets docker application is a mandatory installation. Please contact your Extreme Networks representative to arrange a professional installation.

Analytics managed by ExtremeCloud IQ Site Engine

ExtremeCloud IQ Site Engine includes the following deployment options when deployed with Business Insights:

- Analytics Traffic Sensor
- Analytics Purview Sensor (The application data can be sourced from the Application Telemetry feature on the switch).

With either sensor option, the sensors must run the same version that ExtremeCloud IQ Site Engine is running.

Installation Considerations

Contact your Extreme Networks representative to arrange to have a technical expert complete the installation for your venue.

What's New

The following features are released with the January 14, 2025 update:

Weather Reports

The **Summary** dashboard under **Historical Dashboards** now provides weather reports for venue events. Business Insights provides two weather reports: **Forecast** (projected) and **Measured** (actual) with High and Low temperatures for each along with a general description of the weather. This update lets you analyze the impact that the weather has on network usage.

Proactive Caching of Event Charts

Business Insights for Venues now generates and caches charts for completed events immediately upon event completion rather than waiting for the first run request. This update reduces chart and dashboard loading times for recently completed events.

Location Filtering for Lounges and Suites Dashboard (NFL only)

The **Lounges and Suites** dashboard under **Historical Dashboards** now includes location filters that let you filter data by specific lounges or suites or groups of lounges or suites, as defined in the venue location map. This update helps you analyze Wi-Fi and application usage according to the lounge or suite.

This feature applies to NFL customers only.

Day Parts Comparisons (NFL only)

The **Network Summary** comparative dashboard lets you compare events at a given venue according to the event start time. This feature lets you filter events at a given venue over a season according to the following **Part of the Day** categories, which are based on the match start time:

- **Afternoon**
- **Early** (evening)
- **Prime Time**

This feature applies to NFL customers only.

Product Documentation

For more information, refer to the [ExtremeCloud Business Insights for Venues User Guide](#) and in-product, context-sensitive online help.