



ExtremeCloud IQ (Classic) v25.9.0-36 Release Notes

Enhancements, Fixes, and Supported Devices

9041070-00 Rev AA
April 2026



Copyright © 2026 Extreme Networks, Inc. All rights reserved.

Legal Notice

Extreme Networks, Inc. reserves the right to make changes in specifications and other information contained in this document and its website without prior notice. The reader should in all cases consult representatives of Extreme Networks to determine whether any such changes have been made.

The hardware, firmware, software or any specifications described or referred to in this document are subject to change without notice.

Trademarks

Extreme Networks and the Extreme Networks logo are trademarks or registered trademarks of Extreme Networks, Inc. in the United States and/or other countries.

All other names (including any product names) mentioned in this document are the property of their respective owners and may be trademarks or registered trademarks of their respective companies/owners.

For additional information on Extreme Networks trademarks, see: <https://www.extremenetworks.com/about-extreme-networks/company/legal/trademarks>

Open Source Declarations

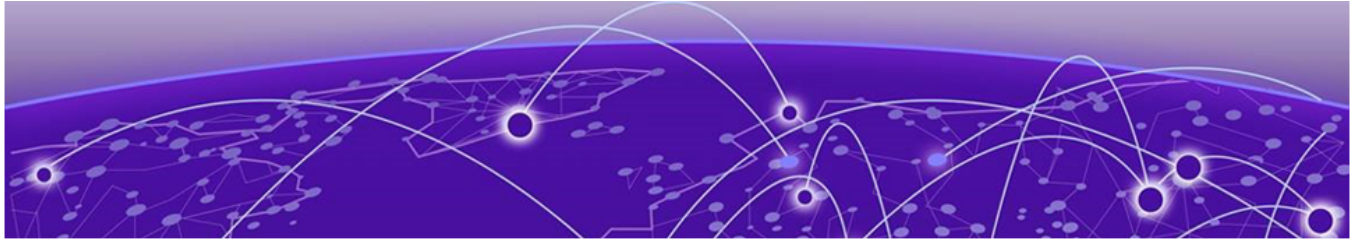
Some software files have been licensed under certain open source or third-party licenses.

End-user license agreements and open source declarations can be found at: <https://www.extremenetworks.com/support/policies/open-source-declaration/>



Table of Contents

| | |
|---|-----------|
| Help and Support..... | v |
| General Release Information..... | 6 |
| Current Release: 25.9.0-36..... | 6 |
| ExtremeCloud IQ Public IP Address Blocks..... | 6 |
| Supported IQ Engine Software..... | 7 |
| New Features..... | 8 |
| New Features in 25.9.0-36..... | 9 |
| Addressed Issues..... | 11 |
| Known Issues..... | 14 |
| Device Support Information..... | 19 |
| Controllers..... | 19 |
| Access Points..... | 20 |
| Universal Hardware..... | 20 |
| IQ Engine (Cloud Native)..... | 21 |
| ExtremeWireless WiNG..... | 22 |
| Extreme Wireless..... | 23 |
| Switches..... | 23 |
| Universal Hardware..... | 24 |
| ExtremeXOS..... | 41 |
| IQ Engine (Cloud Native)..... | 46 |
| VOSS..... | 46 |
| Dell EMC..... | 47 |
| Routers..... | 47 |
| ExtremeCloud IQ Site Engine..... | 48 |
| ExtremeCloud IQ CoPilot..... | 52 |
| ExtremeCloud A3..... | 53 |
| Supported Browsers and Display Settings..... | 53 |
| Desktop and Mobile Browser Support..... | 53 |
| Display Settings..... | 54 |



Abstract

This release notes document for ExtremeCloud™ IQ (Classic) version 25.9.0-36 provides an intermediate-to-advanced technical overview of enhancements, fixes, known issues, and supported platforms for cloud-managed wired and wireless networking deployments. It describes new functionality such as mandatory Legacy Entitlement Key conversion messaging, automatic AP-to-AP 802.11mc FTM ranging for 60GHz deployments in supported regions, and expanded onboarding, monitoring, configuration, and image management support for EXOS/Switch Engine 33.5–33.6.x and VOSS/Fabric Engine 9.2.3 and 9.3.2. The document details operational guidance for device onboarding, firmware lifecycle management, inventory and licensing workflows, SSO integration, and large-scale inventory performance considerations. It summarizes addressed defects across account management, device management, alerts, logging, UI, and upgrades, and documents known limitations affecting LAG templates, GRE failover, AFC visibility, 60GHz regulatory behavior, API responses, and supplemental CLI precedence. Deployment context includes supported topologies, public IP and firewall requirements, browser support, and diagnostics relevant to troubleshooting and configuration validation.



Help and Support

If you require assistance, contact Extreme Networks using one of the following methods:

Extreme Portal

Search the GTAC (Global Technical Assistance Center) knowledge base; manage support cases and service contracts; download software; and obtain product licensing, training, and certifications.

The Hub

A forum for Extreme Networks customers to connect with one another, answer questions, and share ideas and feedback. This community is monitored by Extreme Networks employees, but is not intended to replace specific guidance from GTAC.

Call GTAC

For immediate support: (800) 998 2408 (toll-free in U.S. and Canada) or 1 (408) 579 2800. For the support phone number in your country, visit www.extremenetworks.com/support/contact.



General Release Information



Note

All instances of ExtremeCloud IQ in this guide refer to ExtremeCloud IQ (Classic).

Current Release: 25.9.0-36

April 2026

This release includes updates for expanded device OS support, improved stability across onboarding, licensing, SSO, and inventory workflows, and new 6GHz-related functionality, alongside detailed guidance on deployment requirements, configuration considerations, and troubleshooting limitations.

Related Links

- [Known Issues](#) on page 14
- [Device Support Information](#) on page 19

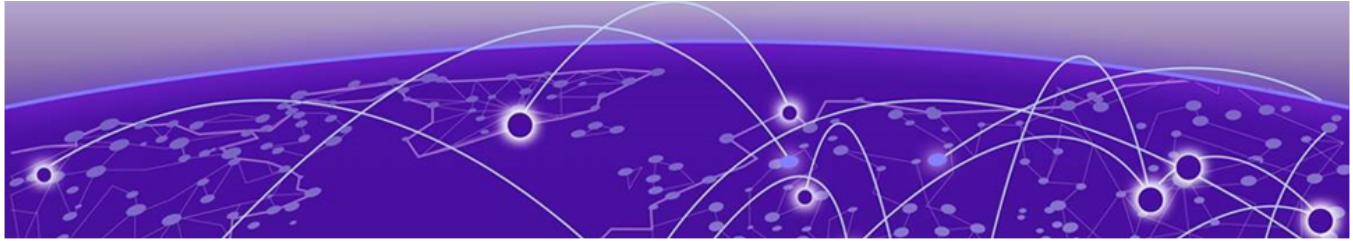
ExtremeCloud IQ Public IP Address Blocks

| Data Center | IP Block | Addresses and Ports |
|-----------------------------|--|---|
| Global Data Center (GDC) | 44.234.22.92/30 18.194.95.0/28 34.253.190.192/26 3.234.248.0/27 | |
| Australia (AUS) | 13.210.3.192/28 18.98.198.80/28 | Firewall Address and Port Information |
| Azure, Canada Central (ACA) | 20.151.64.48/28 | Firewall Address and Port Information |
| Azure, US East (AVA) | 52.226.89.112/28 | Firewall Address and Port Information |
| Brazil (BR) | 18.228.70.16/28 | Firewall Address and Port Information |
| Germany (FRA) | 3.67.81.96/27 18.194.95.0/28 | Firewall Address and Port Information |
| India (IN) | 13.232.67.8/29 3.6.70.64/29 | Firewall Address and Port Information |
| Ireland (IE) | 34.253.190.192/26 | Firewall Address and Port Information |

| Data Center | IP Block | Addresses and Ports |
|----------------------------|--|---|
| Japan (JP) | 18.176.203.112/29 13.231.6.232/29 57.181.58.0/28 | Firewall Address and Port Information |
| Netherlands (NL-GCP) | 34.91.82.64/27 | Firewall Address and Port Information |
| Singapore (SG-GCP) | 34.87.158.80/28 | Firewall Address and Port Information |
| Spain (ES) | 18.101.49.128/27 | Firewall Address and Port Information |
| Sweden (SE) | 13.48.186.224/29 13.48.4.184/29 13.48.4.240/28 | Firewall Address and Port Information |
| Switzerland (ACH) | 51.107.1.192/28 | Firewall Address and Port Information |
| United Arab Emirates (UAE) | 3.28.159.128/28 | Firewall Address and Port Information |
| United Kingdom (UK-AGB) | 51.143.233.80/28 | Firewall Address and Port Information |
| US East (VA) | 34.202.197.0/26 44.192.245.0/26 3.234.248.0/27 | Firewall Address and Port Information |
| US East 2 (VA2) | 34.202.197.0/26 44.192.245.0/26 3.234.248.0/27 | Firewall Address and Port Information |
| US-Iowa (IA-GCP) | 34.67.130.64/27 | Firewall Address and Port Information |
| US Ohio (OH) | 3.145.235.64/26 | Firewall Address and Port Information |

Supported IQ Engine Software

See the [IQ Engine Release Notes](#) for information about IQ Engine version 10.8.6.



New Features

[New Features in 25.9.0-36](#) on page 9 lists the new features introduced in ExtremeCloud IQ 25.9.0-36.

For more information about ExtremeCloud IQ features, see the ExtremeCloud IQ (Classic) v25.9.0 User Guide.

Device OS Support

This release supports the following device operating systems.

- **EXOS/Switch Engine:**

- IQAgent Version
 - EXOS/Switch Engine release < 31.7: upgrade to IQAgent version 0.9.32
 - EXOS/Switch Engine release >= 31.7 < 33.2 upgrade to IQAgent version 0.9.41
 - EXOS/Switch Engine release >= 33.2 upgrade to IQAgent version 1.9.41
- 33.5.2.118-patch1-6 Latest Supported GA Patch

Onboard, Monitor, Config, Image Mgmt, and Global Download Support

- 33.6.1 Latest Supported GA Image

Onboard, Monitor, Config, Image Mgmt, and Global Download Support

- 32.7.3.15-patch1-33 Previous Supported GA Patch

Onboard, Monitor, Config, Image Mgmt, and Global Download Support

- 32.7.3.15-patch1-33 Previous Supported GA Image

Onboard, Monitor, Config, Image Mgmt, and Global Download Support

- **VOSS/Fabric Engine:**

- 0.9.41 IQ Agent Support
- 9.3.2 Latest Supported GA Image

Onboard, Monitor, Config, Image Mgmt, and Global Download Support

- 9.2.3 Previous Supported GA Patch

Onboard, Monitor, Config, Image Mgmt, and Global Download Support

- 9.2.1.1 Previous Supported GA Image

Onboard, Monitor, Config, Image Mgmt, and Global Download Support

- **IQEngine Support:**

- IQEngine release 10.8.6

New Hardware Support

No new hardware in this release.

New Features in 25.9.0-36

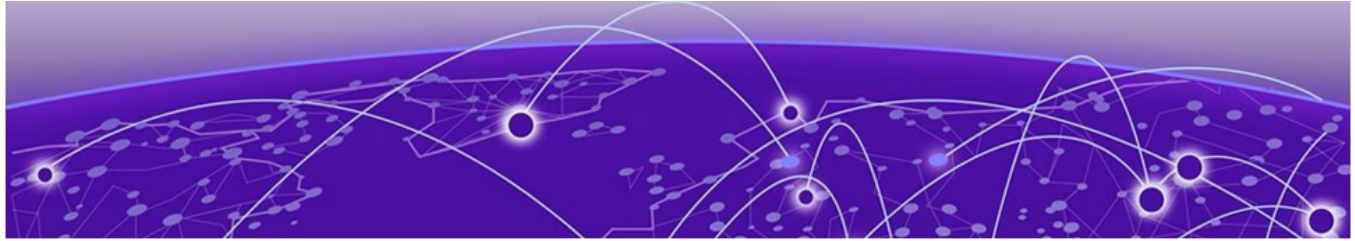
Table 1 lists the new features introduced in ExtremeCloud IQ (Classic) release 25.9.0-36.

Table 1: New Features in release 25.9.0-36

| Feature ID | Feature | Description |
|------------|--|---|
| XCP-17735 | Mandatory Conversion Banner for Legacy Entitlement Keys (LEKs) | Beginning in the 25.9.0 release, a banner displays a warning about the mandatory conversion for user with Legacy Entitlement Keys (LEKs). |
| XIQ-49305 | Automatic Ap to AP 802.11mc FTM Ranging is Automatically Enabled | Automatic Ap to AP 802.11mc FTM ranging is automatically enabled when SSID configuration requires 6 GHz and 6 GHz, when AP model supports 6 GHz and when the country of operation is USA or Canada. |
| XIQ-47932 | VOSS/ Fabric Engine Support | Added support for Fabric Engine 9.3.2, 9.2.3, and 8.10.9 to enable onboarding, monitoring, configuration, and drag- and-drop image management for VOSS/Fabric Engine ExtremeCloud. Supported switch models for 9.2.3 are 7720, 7520, 5720, 5520, 5420, 5320 and applicable 4220 Universal switches as well as VSP7400 and VSP4900. 9.3.2 also includes support for 7830 and 5420M-24W-24S-4YE. 8.10.9 is only supported on XA1400 |
| XCP-17589 | VOSS/ Fabric Engine Support | Support is now offered for Fabric Engine 9.2.3 and 9.3.2 to enable onboarding, monitoring, configuration, and drag- and-drop image management for VOSS/Fabric Engine ExtremeCloud supported SKUs including Universal switches, 7830, VSP7400, and VSP4900. |
| XIQ-48693 | EXOS/ Switch Engine 33.5.2.118-patch1-11 Patch Support | Support is now offered for EXOS/Switch Engine 33.5.2.118-patch1-11 patch for onboarding, monitoring, and configuration for all ExtremeCloud-supported SKUs through download image support. |
| XIQ-48694 | EXOS/ Switch Engine 33.5.2.118-patch1-11 Patch Support | Support is now offered for image download for EXOS/Switch Engine version 33.5.2.118-patch1-11 for all supported single and stacked EXOS/Switch Engine SKUs. The available images in the global download dropdown are 31.7.4.2-patch1-7, 32.7.3.15-patch1-33, 33.5.2.118-patch-11, and 33.5.2 (latest). |

Table 1: New Features in release 25.9.0-36 (continued)

| Feature ID | Feature | Description |
|------------|--|---|
| XIQ-47948 | EXOS/ Switch Engine 33.6 GA Support | Support is now offered for image download for EXOS/Switch Engine 33.6 GA for all ExtremeCloud-supported SKUs, making it available as the latest image in the download dropdown. |
| XIQ-47949 | EXOS/ Switch Engine 33.6 Download Support | Support is now offered for image download for EXOS/Switch Engine 33.6 GA for all ExtremeCloud-supported SKUs. |
| XCP-17622 | EXOS/ Switch Engine 33.6.1 GA support | Support is now offered for onboarding, monitoring, and configuring all ExtremeCloud IQ-supported EXOSSwitch Engine SKUs running version 33.6.1, including drag-and-drop local image management support. |



Addressed Issues

Table 2 lists Addressed Issues in ExtremeCloud IQ 25.9.0-36.

Table 2: Addressed Issues in release 25.9.0-36

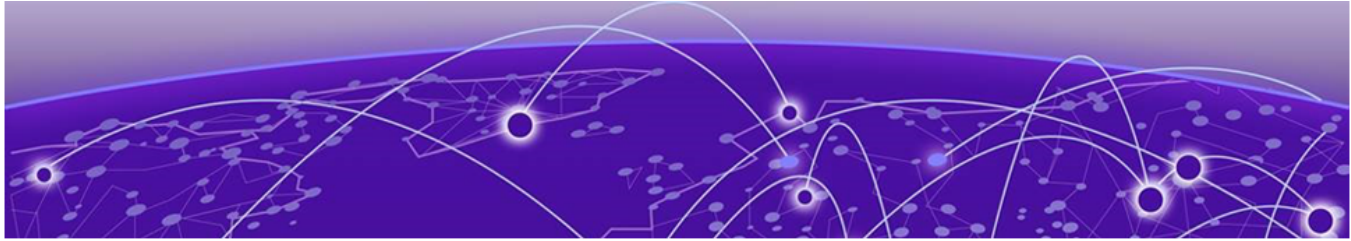
| Issue ID | Description |
|---------------------------|---|
| Account Management | |
| XCP-14937 | Addressed the issue where many accounts returned an UNKNOWN_CUID value due to a missing CUID from the IAM API response. The correct CUID and VIQ ID for accounts in Pendo analytics are now correctly captured. |
| Alerts | |
| XCP-12964 | Addressed the issue to update the alert formatting. |
| XCP-17738 | Addressed the issue to increase the URL length limit for the alert notification webhook to at least 1024 characters. |
| Device Management | |
| XCP-19003 | Addressed the issue where attempting to unmanage an already-unmanaged device in the Network Devices view displayed an invalid subscription error. The fix corrects the subscription status display to show Not Applicable for unmanaged devices. |
| XCP-19210 | Addressed the issue where the internal user list in Access Management displayed no users when the pagination count was set to 500. |
| XCP-19571 | Addressed the issue where deleting a stack from Site Engine correctly removed the stack member from the inventory but left the parent Stack entry behind. |
| XIQ-47663 | Addressed the issue where a Switch Engine device did not transition to a disconnected state after being flipped to a Fabric Engine persona. |
| Inventory | |
| XCP-14922 | Addressed the issue where the Firmware Status page returned no data and generated a 504 timeout error when the inventory contained approximately 30,000 or more devices. |
| XCP-18242 | Addressed the issue where device location assignments applied in bulk using multi-select did not reflect consistently between the Network Devices and Inventory views, causing some devices to display as Unassigned in Inventory while correctly showing the location in Network Devices . |
| Licensing | |

Table 2: Addressed Issues in release 25.9.0-36 (continued)

| Issue ID | Description |
|-----------------------|--|
| WS-4019 | Addressed the issue where an erroneous "Error linking account" toast appeared when linking a VIQ to a Partner license account using a correct CUID, even though the link completed successfully. |
| XCP-17735 | Addressed the issue where users with active Legacy Entitlement Keys (LEKs) did not receive a warning upon login to the ExtremeCloud IQ Classic user interface when the VIQ is not linked. |
| XCP-19249 | Addressed the issue where the NG-IAM integration with the licensing system failed due to an incorrectly configured linkage request parameter in the license API, causing IAM services to enter a CrashLoopBackOff state. |
| Logs | |
| CFD-16719 | Addressed an issue where AP events were not being logged. |
| SSO | |
| WS-3868 | Addressed the issue where switching to an external SSO account immediately after navigating from an internal account failed on the first click. |
| XIQ-47570 | Addressed the issue where the Open Site Engine action from ExtremeCloud IQ Cloud failed to establish an SSO session with ExtremeCloud IQ-SE, returning an HTTP 404 error. |
| Upgrading | |
| XCP-18110 | Addressed the issue where the firmware upgrade scheduler saves the change in scheduled date or time without selecting Done . |
| User Interface | |
| CFD-16254 | Addressed an issue where Copilot data was not being displayed for all sites. |
| WS-3120 | Addressed the issue where users occasionally encountered a white screen with incomplete application loading upon login to the Extreme Platform ONE Networking. |
| XCP-19062 | Addressed the issue where the column header in the Monitoring network devices view was displayed as OS instead of the full column header of Operating System. |
| XCP-19369 | Addressed the issue where the client health statistics table returned no data because the analytics client table was not populating the client_health_stats table correctly. |
| XCP-19805 | Addressed the issue where an uploaded floor image did not load correctly when editing an existing floor in the Sites module, even though the image was saved successfully during floor creation. |
| XIQ-43244 | Addressed the issue where the Round Trip Time (RTT) button was not displayed for clients connected to APs that do not support RTT. |

Table 2: Addressed Issues in release 25.9.0-36 (continued)

| Issue ID | Description |
|-----------|---|
| XIQ-46735 | Addressed the issue where toggling the Auto Config setting in VIQ Management caused devices with a current audit match status (green icon) to incorrectly change to audit mismatch status (yellow icon) in the Network Devices view. |
| XIQ-47190 | Addressed the issue where the notification service failed to send emails to addresses containing an apostrophe, even though the user interface allowed such addresses to be saved. |



Known Issues

Table 3 lists known product issues in ExtremeCloud IQ 25.9.0-36.

Table 3: Known Issues in 25.9.0-36

| Issue ID | Description |
|---------------------------|---|
| Account Management | |
| WS-3204 | When logging in to a legacy Managed Service Provider account that has legacy entitlement keys (LEK), the Extreme Platform ONE interface opens and requires linking to an Extreme Portal account. Because the account contains LEKs, the ExtremeCloud IQ Classic interface should open. Workaround: After login, manually enter the URL for the RDC. To resolve the issue, migrate from the Hierarchical VIQ to the MSP program, or purchase new License Entitlement Manager (LEM) licenses. |
| API | |
| CFD-11529 (02957942) | API response data is unclear. |
| XCP-20428 | Null values are returned for client IP address fields (client_ip and ipv4) in the wired client API response, even when an IP address is assigned and visible in ExtremeCloud IQ. The root cause is a data sync gap between ExtremeCloud IQ and the Common Ignite and HM Ignite cache tables. |
| XIQ-32459 | The ExtremeCloud IQ deployment API HTTP Success status code changed from 200 to 202. |
| Browser Issues | |
| WS-3841 | Pages flicker when using Safari browser version 26.2 on macOS with an external monitor. |
| Device 360 | |
| XIQ-12503 | Network 360 shows Unknown Error when All Access Points Applications is selected and the user selects both ExtremeWireless WiNG and IQ Engine devices. Workaround: Clear selected ExtremeWireless WiNG devices. |
| XIQ-33709 | Some IP VLAN pairs from the Client 360 table and Client pages might be missing if they have multiple IPs learned through Node Alias events. |
| XIQ-34912 | Clients discovered through node alias or DHCP snooping fingerprint might not immediately appear in the Device 360 Clients table. It can take up to 10 minutes for the new entries to appear in the Device 360 Clients table. |

Table 3: Known Issues in 25.9.0-36 (continued)

| Issue ID | Description |
|----------------------------------|--|
| Device Management | |
| XIQ-34908 | When using a stack template with a Link Aggregation Group (LAG), if the LAG has ports from different slots, you must enable Instant Port Profile/Instant Secure Port from the LAG on the template view that contains the master port. This requirement applies to a preexisting Link Aggregation Group in the template, or when creating a new Link Aggregation Group. |
| XIQ-34846 | On wired VOSS and Fabric Engine devices for Cisco Discovery Protocol (CDP), configuration pushed via ExtremeCloud IQ still requires enabling LLDP TX/RX status through device CLI, for a CDP neighbor to establish. |
| XIQ-34724 | Delta configuration push fails for Wifi0 with dual 5G mode when 5G-Low channels are not supported. |
| XIQ-34441 | Standards-Based GRE failover settings that enable geographic redundancy for AP to GRE Tunnel connections are not supported. |
| XIQ-33498 | AP5050 AFC 6GHz FCC does not support client mode. |
| XIQ-26907 | A delta configuration push error might occur when configuring the port Forwarding Rule for Client Mode. Workaround: Push a complete configuration update. |
| XIQ-20909 | When configuring 6GHz radio for a country that does not support it, the configuration push to the AP3000 fails. Workaround: Revert to 2.4 GHz. |
| XIQ-19509 | Access points go offline when pushed to minimum speed and half duplex transmission mode for eth0, and then they reboot. After the reboot, the configuration reverts back to minimum speed with full duplex. |
| XIQ-19498 | When the AP5010 eth0 interface is operating with maximum speed, changing the transmission type causes ExtremeCloud IQ to also generate a delta CLI for speed. |
| XIQ-47962 | Tunnel Concentrator retains the old IP address of an AP after the configuration is updated with a new IP address. |
| XIQ-47986 | Location based SSID classification adds unnecessary AP information to Tunnel Concentrator configuration. |
| EXOS-37458 | When using ExtremeCloud IQ to configure a single port in a VLAN as an LLDP voice port with Med Capabilities and policies and then changing the port type to access or trunk , the LLDP configuration for Med Capabilities appears on ExtremeXOS/ Switch Engine devices running EXOS 33.2. |
| Licensing | |
| CFD-8946 (02710778, 02748750) | License descriptions are automatically cleared when the Activated status is updated. |
| XCP-8418 | Follow-up to fix ATOM license logic. |

Table 3: Known Issues in 25.9.0-36 (continued)

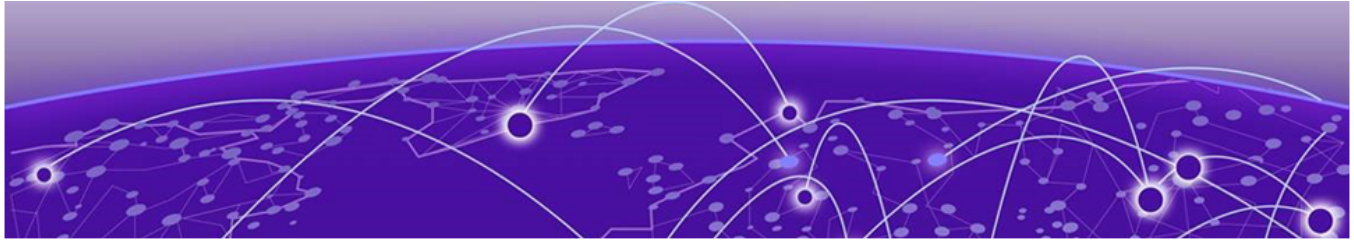
| Issue ID | Description |
|------------------------|--|
| XCP-10232 | When there are insufficient licenses to cover all devices in a stack, instead of automatically unmanaging the stack, ExtremeCloud IQ locks and displays the license violation banner. Workaround: Manually unmanage the stack. To return the stack to managed status, purchase new subscriptions with sufficient licenses to cover all devices. |
| Logs | |
| XCP-12063 | An audit log entry is not generated for a firmware upgrade triggered with a T+1 day schedule. Although the firmware upgrade completes successfully on the scheduled date, no corresponding log entry appears in the Audit Log. |
| XCP-12064 | An audit log entry is not generated upon successful completion of a firmware upgrade. A log is created when the upgrade is initiated, but no log is created when the upgrade completes. |
| XCP-16651 | No audit log entry is generated for a failed firmware upgrade. A failure log with the failure reason and device details is expected but not created. |
| Onboarding | |
| XIQ-39282 | After successfully onboarding locally managed APs, a misleading Device Update Failed message might appear in the Last Updated field. This is only a display issue and does not affect any functionality. |
| SSO | |
| XIQ-47570 | SSO from ExtremeCloud IQ to XIQ-SE (Open Site Engine) is broken. An HTTP 404 error is returned when the XIQ Cloud attempts to authenticate to the XIQ-SE user info endpoint. |
| Troubleshooting | |
| CFD-12971 (03040726) | Capwap disconnection for about 1.5 hours due to the capwap server i/o timeout issue. |
| XIQ-19977 | The MCast rate configured in an AP template does not take effect when sCLI is presented. |
| XIQ-31433 | The Cloud Service component of iBeacon is temporarily disabled. This service will be available in a future release. |
| XIQ-48210 | Downloading the AFC Geolocation report produced a corrupt file that was not in the expected CSV format, making it unusable for troubleshooting. |
| Upgrading | |
| CFD-10699 (02906999) | Universal Access Points failed to complete the WiNG-OS conversion, even after a successful CAPWAP and STUN binding. |

Table 3: Known Issues in 25.9.0-36 (continued)

| Issue ID | Description |
|-----------------------|---|
| XCP-13051 | While a firmware upgrade is in progress for a device in Extreme Platform ONE Networking it is deleted in ExtremeCloud IQ. |
| XCP-14211 | The Firmware Version dropdown is not visible during a firmware upgrade when multiple APs are selected and the last device in the list is reviewed on high-resolution displays. |
| XCP-16957 | Selecting three or more filters in the firmware upgrade history table causes the filter display to show only two filters, hiding the remaining selected filters. |
| User Interface | |
| APC-21456 | <p>In rare cases, ExtremeCloud IQ does not upload some IGMP sub-commands successfully.</p> <p>Note: SR2200/2300 only.</p> <p>Workaround: Use the Supplemental CLI to upload commands when necessary. To use the supplemental CLI tool, go to Global Settings > VIQ Management, and set the Supplemental CLI slider to ON.</p> |
| XIQ-46795 | Stack hostname changes made in device CLI are not reflected in ExtremeCloud IQ interface. |
| XIQ-33103 | The AFC View on the Manage Device page displays <i>qualified</i> AFC-governed 6 GHz access points. This feature requires version 10.7.2 or higher. The AFC View does not include onboarded devices with a firmware version earlier than the minimum required version. After upgrading to the minimum required version, the AFC View displays the qualified access points. |
| APC-41057 | <p>Legend labels on the SR2200/2300 switch stack graph sometimes disappear when attempting to download or print the graph.</p> <p>Workaround:</p> <p>Download one graph at a time, and open the downloaded file before choosing to download again.</p> <p>Note: The SVG option is the most stable format; PNG, JPG, and PDF have spacing issues on the legend section.</p> |
| CFD-7360 (02498292) | For Wing-AP sites, contrary to present implementation, customers expect to see APs offline when ExtremeCloud IQ / nsight policy is not used for that site. |
| CFD-13877 (03094673) | Wi-Fi Interface graph does not match Device > Monitoring > Wireless Interface . |
| XCP-13806 | Switching to the HomeVIQ tenant view causes most APIs, including the myaccount API, to fail with a 403 Forbidden error. |

Table 3: Known Issues in 25.9.0-36 (continued)

| Issue ID | Description |
|-----------|--|
| XCP-18242 | A location assigned to multiple devices simultaneously is correctly reflected in the Network Devices table but not in the Inventory page, which continues to show the location as Unassigned for some devices. |
| XIQ-5700 | Client Trial showed only the currently connected AP when the client roamed to a different AP from the onboarded ExtremeCloud IQ Controller. |
| XIQ-19320 | The Wi-Fi Interface Transmission power does not update in the Managed Device page after a bulk edit. |
| XIQ-19368 | The user interface overrides Supplemental CLI. If you add an sCLI object and there is a code conflict with the GUI, the GUI has priority. To give the sCLI priority, place the sCLI code at the bottom of the command structure in the audit. |
| XIQ-21339 | ExtremeCloud IQ does not display the error when aggregation is enabled with a rate-limit configuration. |
| XIQ-31601 | A perimeter added or modified from the Planning page does not sync with the Realtime maps page. |
| XIQ-42050 | Enabling the FIPS Enabled filter in Manage > Applications on a StateRamp-enabled environment displays all applications instead of filtering to only FIPS-enabled apps. |
| XIQ-42051 | Enabling the FIPS Enabled filter in Manage > Summary on a StateRamp-enabled environment causes the Top Application Groups, Top Usage, and Total Application Usage (AP Only) widgets to display no data. |
| XIQ-46203 | The source field label on the Users monitoring page displays as "other" instead of "others". |
| XIQ-47942 | DPCap events are not appearing on the Client Monitor Diagnosis page. |



Device Support Information

- [Controllers](#) on page 19
- [Access Points](#) on page 20
- [Switches](#) on page 23
- [Routers](#) on page 47
- [ExtremeCloud IQ Site Engine](#) on page 48
- [ExtremeCloud IQ CoPilot](#) on page 52
- [ExtremeCloud A3](#) on page 53
- [Supported Browsers and Display Settings](#) on page 53

This section lists the devices that ExtremeCloud IQ supports and includes the latest version of the software that each device supports.

Controllers

| Device Model | Latest Supported Release | Comments |
|----------------|--------------------------|--------------|
| E1120 | XIQC 10.18.01 | Monitor only |
| E2120 | XIQC 10.18.01 | Monitor only |
| E2122 | XIQC 10.18.01 | Monitor only |
| E3120 | XIQC 10.18.01 | Monitor only |
| E3125 | XIQC 10.18.01 | Monitor only |
| VE6120 | XIQC 10.18.01 | Monitor only |
| VE6120H | XIQC 10.18.01 | Monitor only |
| VE6120K | XIQC 10.18.01 | Monitor only |
| VE6125 | XIQC 10.17.01 | Monitor only |
| VE6125K | XIQC 10.18.01 | Monitor only |
| NX5500 | WiNG OS 7.9.6.1 | Monitor only |
| NX7500 Series | WiNG OS 7.9.6.1 | Monitor only |
| NX9500 Series | WiNG OS 7.7.1.9 | Monitor only |
| NX9600 Series | WiNG OS 7.9.6.1 | Monitor only |
| RFS4000 Series | WiNG OS 5.9.7.1 | Monitor only |
| RFS6000 Series | WiNG OS 5.9.1.8 | Monitor only |

| Device Model | Latest Supported Release | Comments |
|----------------|--------------------------|--------------|
| RFS7000 Series | WiNG OS 5.8.6.11 | Monitor only |
| VX9000 | WiNG OS 7.9.6.1 | Monitor only |

Access Points

Access Point information is provided in the following sections:

- [Universal Hardware](#) on page 20
- [IQ Engine \(Cloud Native\)](#) on page 21
- [ExtremeWireless WiNG](#) on page 22
- [Extreme Wireless](#) on page 23

Universal Hardware

| Device Model | Latest Supported Release | Comments |
|--------------|--|---|
| AP302W | IQ Engine 10.8.6 WiNG OS 7.9.6.0 AP 10.18.01 | Platform support introduced with IQ Engine 10.3.1 |
| AP305C | IQ Engine 10.8.6 WiNG OS 7.9.6.0 AP 10.18.01 | Platform support introduced with IQ Engine 10.1.1 |
| AP305C-1 | IQ Engine 10.8.6 WiNG OS 7.9.6.0 AP 10.18.01 | Platform support introduced with IQ Engine 10.4.6 |
| AP305CX | IQ Engine 10.8.6 WiNG OS 7.9.6.0 AP 10.18.01 | Platform support introduced with IQ Engine 10.1.1 |
| AP3000 | IQ Engine 10.8.6 AP 10.18.01 | Platform support introduced with IQ engine 10.6.1 |
| AP3000X | IQ Engine 10.8.2 AP 10.18.01 | Platform support introduced with IQ Engine 10.6.1 |
| AP4000 | IQ Engine 10.8.6 AP 10.18.01 | Platform support introduced with IQ Engine 10.4.1 |
| AP4000-1 | IQ Engine 10.8.6 AP 10.18.01 | Platform support introduced with IQ Engine 10.4.2 |
| AP4020 | IQ Engine 10.8.6 AP 10.18.01 | Platform support introduced with IQ Engine 10.8.1 |
| AP410C | IQ Engine 10.8.6 WiNG OS 7.9.6.0 AP 10.18.01 | Platform support introduced with IQ Engine 10.1.2 |

| Device Model | Latest Supported Release | Comments |
|--------------|--|---|
| AP410C-1 | IQ Engine 10.8.6 WiNG OS 7.9.6.0 AP 10.18.01 | Platform support introduced with IQ Engine 10.4.6 |
| AP460C | IQ Engine 10.8.6 WiNG OS 7.9.6.0 AP 10.18.01 | Platform support introduced with IQ Engine 10.1.2 |
| AP460S6C | IQ Engine 10.8.6 WiNG OS 7.9.6.0 AP 10.18.01 | Platform support introduced with IQ Engine 10.1.2 |
| AP460S12C | IQ Engine 10.8.6 WiNG OS 7.9.6.0 AP 10.18.01 | Platform support introduced with IQ Engine 10.1.2 |
| AP5010 | IQ Engine 10.8.6 WiNG OS 7.9.6.0 AP 10.18.01 | Platform support introduced with IQ Engine 10.5.1 |
| AP5020 | IQ Engine 10.8.6 AP 10.18.01 | Platform support introduced with IQ Engine 10.7.2 |
| AP5050U | IQ Engine 10.8.6 AP 10.18.01 | Platform support introduced with IQ Engine 10.5.3 |
| AP5050D | IQ Engine 10.8.6 AP 10.18.01 | Platform support introduced with IQ Engine 10.5.3 |
| AP510C/CX | IQ Engine 10.8.6 AP 10.18.01 | Platform support introduced with IQ Engine 10.0.8 |

IQ Engine (Cloud Native)

| Device Model | Latest Supported Release | Comments |
|--------------|--------------------------|---|
| AP630 | IQ Engine 10.8.6 | Platform support introduced with IQ Engine 10.0.1. End of Life Information |
| AP650 | IQ Engine 10.8.6 | Platform support introduced with IQ Engine 10.0.1. End of Life Information |
| AP650X | IQ Engine 10.8.6 | Platform support introduced with IQ Engine 10.0.1. End of Life Information |
| AP150W | IQ Engine 10.6.1a | Platform support introduced with IQ Engine 8.1.1. End of Life Information |

| Device Model | Latest Supported Release | Comments |
|--------------|--------------------------|--|
| AP130 | IQ Engine 10.6.1a | Platform support introduced with IQ Engine 8.2.1. End of Life Information |
| Atom AP30 | IQ Engine 10.6.1a | Platform support introduced with IQ Engine 8.3.2. End of Life Information |

ExtremeWireless WiNG

| Device Model | Latest Supported Release | Comments |
|--------------|--------------------------|--------------|
| AP560i | WiNG OS 7.9.6.0 | Monitor only |
| AP560h | WiNG OS 7.9.6.0 | Monitor only |
| AP505 | WiNG OS 7.9.6.0 | Monitor only |
| AP510i | WiNG OS 7.9.6.0 | Monitor only |
| AP510i-1 | WiNG OS 7.9.6.0 | Monitor only |
| AP460i/e | WiNG OS 7.9.6.0 | Monitor only |
| AP410i/e | WiNG OS 7.9.6.0 | Monitor only |
| AP410i-1 | WiNG OS 7.9.6.0 | Monitor only |
| AP360i/e | WiNG OS 7.9.6.0 | Monitor only |
| AP310i/e | WiNG OS 7.9.6.0 | Monitor only |
| AP310i/e-1 | WiNG OS 7.9.6.0 | Monitor Only |
| AP3000 | WiNG OS 7.9.6.0 | Monitor Only |
| AP8533 | WiNG OS 7.7.1.11 | Monitor only |
| AP8432 | WiNG OS 7.7.1.11 | Monitor only |
| AP8232 | WiNG OS 5.9.1.8 | Monitor only |
| AP8222 | WiNG OS 5.8.6.11 | Monitor only |
| AP8163 | WiNG OS 5.9.7.1 | Monitor only |
| AP8132 | WiNG OS 5.9.1.8 | Monitor only |
| AP8122 | WiNG OS 5.9.1.8 | Monitor only |
| AP7662 | WiNG OS 7.7.1.11 | Monitor only |
| AP7632 | WiNG OS 7.7.1.11 | Monitor only |
| AP7622 | WiNG OS 5.9.7.1 | Monitor only |
| AP7612 | WiNG OS 7.7.1.11 | Monitor only |
| AP7602 | WiNG OS 5.9.7.1 | Monitor only |
| AP7562 | WiNG OS 7.7.1.11 | Monitor only |
| AP7532 | WiNG OS 7.7.1.11 | Monitor only |
| AP7522 | WiNG OS 7.7.1.11 | Monitor only |

| Device Model | Latest Supported Release | Comments |
|--------------|--------------------------|--------------|
| AP7502 | WiNG OS 5.9.7.1 | Monitor only |
| AP7161 | WiNG OS 5.9.1.8 | Monitor only |
| AP7131 | WiNG OS 5.8.6.11 | Monitor only |
| AP6562 | WiNG OS 5.9.1.8 | Monitor only |
| AP6532 | WiNG OS 5.9.1.8 | Monitor only |
| AP6522 | WiNG OS 5.9.1.8 | Monitor only |
| AP6521 | WiNG OS 5.9.1.8 | Monitor only |
| AP6511 | WiNG OS 5.8.6.11 | Monitor only |

Extreme Wireless

| Device Model | Latest Supported Release | Comments |
|--------------|--------------------------|--------------|
| AP3965 | ExtremeWireless 10.51 | Monitor only |
| AP3935 | ExtremeWireless 10.51 | Monitor only |
| AP3917 | ExtremeWireless 10.51 | Monitor only |
| AP3916C | ExtremeWireless 10.51 | Monitor only |
| AP3915 | ExtremeWireless 10.51 | Monitor only |
| AP3912 | ExtremeWireless 10.51 | Monitor only |
| SA201 | ExtremeWireless 10.51 | Monitor only |

Switches

Switch information is provided in the following sections:

- [Universal Hardware](#) on page 24
- [ExtremeXOS](#) on page 41
- [VOSS](#) on page 46
- [Dell EMC](#) on page 47

For the latest release notes for Fabric Engine and Switch Engine , see the [Extreme Networks Documentation Site](#).

Universal Hardware

| Device Model | Latest Supported Release | Standalone Support | Stack Support |
|--------------|--------------------------|--|---|
| 4120-24MW-4Y | Switch Engine 33.5 | <ul style="list-style-type: none"> • Onboard • Monitor • Template- and device-level configuration • SSH Proxy* • Supplemental CLI* <p>Note: Pilot license required to configure advanced features.</p> | <ul style="list-style-type: none"> • Onboard • Monitor • Template- and device-level configuration • SSH Proxy* • Up to 8 unit stacking • 200Gb stacking through two built-in QSFP28 ports <p>Note: Can only stack with other 4120 devices. Cross stacking between 4120 and 4220 is not supported. Cross stacking between 4000 and 5000 is not supported.</p> |
| 4120-48MW-4Y | Switch Engine 33.5 | <ul style="list-style-type: none"> • Onboard • Monitor • Template- and device-level configuration • SSH Proxy* • Supplemental CLI* <p>Note: Pilot license required to configure advanced features.</p> | <ul style="list-style-type: none"> • Onboard • Monitor • Template- and device-level configuration • SSH Proxy* • Up to 8 unit stacking • 200Gb stacking through two built-in QSFP28 ports <p>Note: Can only stack with other 4120 devices. Cross stacking between 4120 and 4220 is not supported. Cross stacking between 4000 and 5000 is not supported.</p> |

| Device Model | Latest Supported Release | Standalone Support | Stack Support |
|-------------------|--------------------------|--|---|
| 4120-Series-Stack | Switch Engine 33.5 | <ul style="list-style-type: none"> Onboard Monitor Template- and device-level configuration SSH Proxy* Supplemental CLI* <p>Note: Pilot license required to configure advanced features.</p> | <ul style="list-style-type: none"> Onboard Monitor Template- and device-level configuration SSH Proxy* Up to 8 unit stacking 200Gb stacking through two built-in QSFP28 ports <p>Note: Can only stack with other 4120 devices. Cross stacking between 4120 and 4220 is not supported. Cross stacking between 4000 and 5000 is not supported.</p> |
| 4220-12P-4X | Switch Engine 33.5 | <p>Switch Engine:</p> <ul style="list-style-type: none"> Onboard Monitor Template- and device-level configuration SSH Proxy* Supplemental CLI* <p>Fabric Engine: Monitor</p> <p>Note: Pilot license required to configure advanced features.</p> | <ul style="list-style-type: none"> Onboard Monitor Template- and device-level configuration SSH Proxy* Up to 8 unit stacking 40Gb stacking through two built-in SFP+ uplink ports <p>Note: Can only stack with other 4220 devices. Cross stacking between 4120 and 4220 is not supported. Cross stacking between 4000 and 5000 is not supported.</p> |

| Device Model | Latest Supported Release | Standalone Support | Stack Support |
|--------------|--------------------------|--|---|
| 4220-12T-4X | Switch Engine 33.5 | <p>Switch Engine:</p> <ul style="list-style-type: none"> • Onboard • Monitor • Template- and device-level configuration • SSH Proxy* • Supplemental CLI* <p>Fabric Engine: Monitor</p> <p>Note: Pilot license required to configure advanced features.</p> | <ul style="list-style-type: none"> • Onboard • Monitor • Template- and device-level configuration • SSH Proxy* • Up to 8 unit stacking • 40Gb stacking through two built-in SFP+ uplink ports <p>Note: Can only stack with other 4220 devices. Cross stacking between 4120 and 4220 is not supported. Cross stacking between 4000 and 5000 is not supported.</p> |
| 4220-24P-4X | Switch Engine 33.5 | <p>Switch Engine:</p> <ul style="list-style-type: none"> • Onboard • Monitor • Template- and device-level configuration • SSH Proxy* • Supplemental CLI* <p>Fabric Engine: Monitor</p> <p>Note: Pilot license required to configure advanced features.</p> | <ul style="list-style-type: none"> • Onboard • Monitor • Template- and device-level configuration • SSH Proxy* • Up to 8 unit stacking • 40Gb stacking through two built-in SFP+ uplink ports <p>Note: Can only stack with other 4220 devices. Cross stacking between 4120 and 4220 is not supported. Cross stacking between 4000 and 5000 is not supported.</p> |

| Device Model | Latest Supported Release | Standalone Support | Stack Support |
|--------------|--------------------------|--|---|
| 4220-24T-4X | Switch Engine 33.5 | <p>Switch Engine:</p> <ul style="list-style-type: none"> • Onboard • Monitor • Template- and device-level configuration • SSH Proxy* • Supplemental CLI* <p>Fabric Engine: Monitor</p> <p>Note: Pilot license required to configure advanced features.</p> | <ul style="list-style-type: none"> • Onboard • Monitor • Template- and device-level configuration • SSH Proxy* • Up to 8 unit stacking • 40Gb stacking through two built-in SFP+ uplink ports <p>Note: Can only stack with other 4220 devices. Cross stacking between 4120 and 4220 is not supported. Cross stacking between 4000 and 5000 is not supported.</p> |
| 4220-48P-4X | Switch Engine 33.5 | <ul style="list-style-type: none"> • Onboard • Monitor • Template- and device-level configuration • SSH Proxy* • Supplemental CLI* <p>Note: Pilot license required to configure advanced features.</p> | <ul style="list-style-type: none"> • Onboard • Monitor • Template- and device-level configuration • SSH Proxy* • Up to 8 unit stacking • 40Gb stacking through two built-in SFP+ uplink ports <p>Note: Can only stack with other 4220 devices. Cross stacking between 4120 and 4220 is not supported. Cross stacking between 4000 and 5000 is not supported.</p> |

| Device Model | Latest Supported Release | Standalone Support | Stack Support |
|-----------------|--------------------------|--|---|
| 4220-48T-4X | Switch Engine 33.5 | <ul style="list-style-type: none"> • Onboard • Monitor • Template- and device-level configuration • SSH Proxy* • Supplemental CLI* <p>Note: Pilot license required to configure advanced features.</p> | <ul style="list-style-type: none"> • Onboard • Monitor • Template- and device-level configuration • SSH Proxy* • Up to 8 unit stacking • 40Gb stacking through two built-in SFP+ uplink ports <p>Note: Can only stack with other 4220 devices. Cross stacking between 4120 and 4220 is not supported. Cross stacking between 4000 and 5000 is not supported.</p> |
| 4220-4MW-20P-4X | Switch Engine 33.5 | <p>Switch Engine:</p> <ul style="list-style-type: none"> • Onboard • Monitor • Template- and device-level configuration • SSH Proxy* • Supplemental CLI* <p>Fabric Engine: Monitor</p> <p>Note: Pilot license required to configure advanced features.</p> | <ul style="list-style-type: none"> • Onboard • Monitor • Template- and device-level configuration • SSH Proxy* • Up to 8 unit stacking • 40Gb stacking through two built-in SFP+ uplink ports <p>Note: Can only stack with other 4220 devices. Cross stacking between 4120 and 4220 is not supported. Cross stacking between 4000 and 5000 is not supported.</p> |

| Device Model | Latest Supported Release | Standalone Support | Stack Support |
|-----------------|--------------------------|--|---|
| 4220-4MW-8P-4X | Switch Engine 33.5 | <p>Switch Engine:</p> <ul style="list-style-type: none"> • Onboard • Monitor • Template- and device-level configuration • SSH Proxy* • Supplemental CLI* <p>Fabric Engine: Monitor</p> <p>Note: Pilot license required to configure advanced features.</p> | <ul style="list-style-type: none"> • Onboard • Monitor • Template- and device-level configuration • SSH Proxy* • Up to 8 unit stacking • 40Gb stacking through two built-in SFP+ uplink ports <p>Note: Can only stack with other 4220 devices. Cross stacking between 4120 and 4220 is not supported. Cross stacking between 4000 and 5000 is not supported.</p> |
| 4220-8MW-40P-4X | Switch Engine 33.5 | <p>Switch Engine:</p> <ul style="list-style-type: none"> • Onboard • Monitor • Template- and device-level configuration • SSH Proxy* • Supplemental CLI* <p>Fabric Engine: Monitor</p> <p>Note: Pilot license required to configure advanced features.</p> | <ul style="list-style-type: none"> • Onboard • Monitor • Template- and device-level configuration • SSH Proxy* • Up to 8 unit stacking • 40Gb stacking through two built-in SFP+ uplink ports <p>Note: Can only stack with other 4220 devices. Cross stacking between 4120 and 4220 is not supported. Cross stacking between 4000 and 5000 is not supported.</p> |

| Device Model | Latest Supported Release | Standalone Support | Stack Support |
|-------------------|--------------------------|--|---|
| 4220-8X | Switch Engine 33.5 | <p>Switch Engine:</p> <ul style="list-style-type: none"> • Onboard • Monitor • Template- and device-level configuration • SSH Proxy* • Supplemental CLI* <p>Fabric Engine: Monitor</p> <p>Note: Pilot license required to configure advanced features.</p> | <ul style="list-style-type: none"> • Onboard • Monitor • Template- and device-level configuration • SSH Proxy* • Up to 8 unit stacking • 40Gb stacking through two built-in SFP+ uplink ports <p>Note: Can only stack with other 4220 devices. Cross stacking between 4120 and 4220 is not supported. Cross stacking between 4000 and 5000 is not supported.</p> |
| 4220-Series-Stack | Switch Engine 33.5 | <ul style="list-style-type: none"> • Onboard • Monitor • Template- and device-level configuration • SSH Proxy* • Supplemental CLI* <p>Note: Pilot license required to configure advanced features.</p> | <ul style="list-style-type: none"> • Onboard • Monitor • Template- and device-level configuration • SSH Proxy* • Up to 8 unit stacking • 40Gb stacking through two built-in SFP+ uplink ports <p>Note: Can only stack with other 4220 devices. Cross stacking between 4120 and 4220 is not supported. Cross stacking between 4000 and 5000 is not supported.</p> |

| Device Model | Latest Supported Release | Standalone Support | Stack Support |
|--------------|--------------------------|--|---|
| 5120-24X-4Y | Switch Engine 33.5 | <ul style="list-style-type: none"> • Onboard • Monitor • Template- and device-level configuration • SSH Proxy* • Supplemental CLI* <p>Note: Pilot license required to configure advanced features.</p> | <ul style="list-style-type: none"> • Onboard • Monitor • Template- and device-level configuration • SSH Proxy* • Up to 8 unit stacking • Ability to toggle universal ports from stacking-support enabled to stacking-support disabled • Two QSFP28 uplink ports that can operate at 1x100G, 4x10G, or 4x25G <p>Note: Can only stack with other 5120 devices. Cross stacking between 4000 and 5000 is not supported.</p> |
| 5120-24XT-4Y | Switch Engine 33.5 | <ul style="list-style-type: none"> • Onboard • Monitor • Template- and device-level configuration • SSH Proxy* • Supplemental CLI* <p>Note: Pilot license required to configure advanced features.</p> | <ul style="list-style-type: none"> • Onboard • Monitor • Template- and device-level configuration • SSH Proxy* • Up to 8 unit stacking • Ability to toggle universal ports from stacking-support enabled to stacking-support disabled • Two QSFP28 uplink ports that can operate at 1x100G, 4x10G, or 4x25G <p>Note: Can only stack with other 5120 devices. Cross stacking between 4000 and 5000 is not supported.</p> |

| Device Model | Latest Supported Release | Standalone Support | Stack Support |
|-------------------|--------------------------|--|---|
| 5120-44X-4Y-2C | Switch Engine 33.5 | <ul style="list-style-type: none"> • Onboard • Monitor • Template- and device-level configuration • SSH Proxy* • Supplemental CLI* <p>Note: Pilot license required to configure advanced features.</p> | <ul style="list-style-type: none"> • Onboard • Monitor • Template- and device-level configuration • SSH Proxy* • Up to 8 unit stacking • Ability to toggle universal ports from stacking-support enabled to stacking-support disabled • Two QSFP28 uplink ports that can operate at 1x100G, 4x10G, or 4x25G <p>Note: Can only stack with other 5120 devices. Cross stacking between 4000 and 5000 is not supported.</p> |
| 5120-Series-Stack | Switch Engine 33.5 | <ul style="list-style-type: none"> • Onboard • Monitor • Template- and device-level configuration • SSH Proxy* • Supplemental CLI* <p>Note: Pilot license required to configure advanced features.</p> | <ul style="list-style-type: none"> • Onboard • Monitor • Template- and device-level configuration • SSH Proxy* • Up to 8 unit stacking • Ability to toggle universal ports from stacking-support enabled to stacking-support disabled • Two QSFP28 uplink ports that can operate at 1x100G, 4x10G, or 4x25G <p>Note: Can only stack with other 5120 devices. Cross stacking between 4000 and 5000 is not supported.</p> |

| Device Model | Latest Supported Release | Standalone Support | Stack Support |
|-----------------|---|--|--|
| 5320-16P-4XE | Switch Engine 33.5 Fabric Engine 9.3 | <ul style="list-style-type: none"> • Monitor • Template- and device-level configuration • SSH Proxy* • Supplemental CLI* | <p>Switch Engine:</p> <ul style="list-style-type: none"> • Monitor • Template- and device-level configuration • SSH Proxy <p>Note: Cross stacking between 4000 and 5000 is not supported.</p> |
| 5320-16P-4XE-DC | Switch Engine 33.5 Fabric Engine 9.3 | <ul style="list-style-type: none"> • Monitor • Template- and device-level configuration • SSH Proxy* • Supplemental CLI* | <p>Switch Engine:</p> <ul style="list-style-type: none"> • Monitor • Template- and device-level configuration • SSH Proxy <p>Note: Cross stacking between 4000 and 5000 is not supported.</p> |
| 5320-24T-8XE | Switch Engine 33.5 Fabric Engine 9.3 | <ul style="list-style-type: none"> • Monitor • Template- and device-level configuration • SSH Proxy* • Supplemental CLI* | <ul style="list-style-type: none"> • Monitor • Template- and device-level configuration • SSH Proxy <p>Note: Cross stacking between 4000 and 5000 is not supported.</p> |
| 5320-24P-8XE | Switch Engine 33.5 Fabric Engine 9.3 | <ul style="list-style-type: none"> • Monitor • Template- and device-level configuration • SSH Proxy* • Supplemental CLI* | <ul style="list-style-type: none"> • Monitor • Template- and device-level configuration • SSH Proxy <p>Note: Cross stacking between 4000 and 5000 is not supported.</p> |
| 5320-48T-8XE | Switch Engine 33.5 Fabric Engine 9.3 | <ul style="list-style-type: none"> • Monitor • Template- and device-level configuration • SSH Proxy* • Supplemental CLI* | <ul style="list-style-type: none"> • Monitor • Template- and device-level configuration • SSH Proxy <p>Note: Cross stacking between 4000 and 5000 is not supported.</p> |

| Device Model | Latest Supported Release | Standalone Support | Stack Support |
|---------------|---|--|---|
| 5320-48P-8XE | Switch Engine 33.5 Fabric Engine 9.3 | <ul style="list-style-type: none"> • Monitor • Template- and device-level configuration • SSH Proxy* • Supplemental CLI* | <ul style="list-style-type: none"> • Monitor • Template- and device-level configuration • SSH Proxy <p>Note: Cross stacking between 4000 and 5000 is not supported.</p> |
| 5420F-24T-4XE | Switch Engine 33.5 Fabric Engine 9.3 | <ul style="list-style-type: none"> • Monitor • Template- and device-level configuration • SSH Proxy* • Supplemental CLI* | <ul style="list-style-type: none"> • Monitor • Template- and device-level configuration • SSH Proxy <p>Note: Cross stacking between 4000 and 5000 is not supported.</p> |
| 5420F-24P-4XE | Switch Engine 33.5 Fabric Engine 9.3 | <ul style="list-style-type: none"> • Monitor • Template- and device-level configuration • SSH Proxy* • Supplemental CLI* | <ul style="list-style-type: none"> • Monitor • Template- and device-level configuration • SSH Proxy <p>Note: Cross stacking between 4000 and 5000 is not supported.</p> |
| 5420F-24S-4XE | Switch Engine 33.5 Fabric Engine 9.3 | <ul style="list-style-type: none"> • Monitor • Template- and device-level configuration • SSH Proxy* • Supplemental CLI* | <ul style="list-style-type: none"> • Monitor • Template- and device-level configuration • SSH Proxy <p>Note: Cross stacking between 4000 and 5000 is not supported.</p> |
| 5420F-48T-4XE | Switch Engine 33.5 Fabric Engine 9.3 | <ul style="list-style-type: none"> • Monitor • Template- and device-level configuration • SSH Proxy* • Supplemental CLI* | <ul style="list-style-type: none"> • Monitor • Template- and device-level configuration • SSH Proxy <p>Note: Cross stacking between 4000 and 5000 is not supported.</p> |

| Device Model | Latest Supported Release | Standalone Support | Stack Support |
|--------------------|---|--|---|
| 5420F-48P-4XE | Switch Engine 33.5 Fabric Engine 9.3 | <ul style="list-style-type: none"> • Monitor • Template- and device-level configuration • SSH Proxy* • Supplemental CLI* | <ul style="list-style-type: none"> • Monitor • Template- and device-level configuration • SSH Proxy <p>Note: Cross stacking between 4000 and 5000 is not supported.</p> |
| 5420F-48P-4XL | Switch Engine 33.5 Fabric Engine 9.3 | <ul style="list-style-type: none"> • Monitor • Template- and device-level configuration • SSH Proxy* • Supplemental CLI* | <ul style="list-style-type: none"> • Monitor • Template- and device-level configuration • SSH Proxy |
| 5420F-8W-16P-4XE | Switch Engine 33.5 Fabric Engine 9.3 | <ul style="list-style-type: none"> • Monitor • Template- and device-level configuration • SSH Proxy* • Supplemental CLI* | <ul style="list-style-type: none"> • Monitor • Template- and device-level configuration • SSH Proxy <p>Note: Cross stacking between 4000 and 5000 is not supported.</p> |
| 5420F-16W-32P-4XE | Switch Engine 33.5 Fabric Engine 9.3 | <ul style="list-style-type: none"> • Monitor • Template- and device-level configuration • SSH Proxy* • Supplemental CLI* | <ul style="list-style-type: none"> • Monitor • Template- and device-level configuration • SSH Proxy <p>Note: Cross stacking between 4000 and 5000 is not supported.</p> |
| 5420F-16MW-32P-4XE | Switch Engine 33.5 Fabric Engine 9.3 | <ul style="list-style-type: none"> • Monitor • Template- and device-level configuration • SSH Proxy* • Supplemental CLI* | <ul style="list-style-type: none"> • Monitor • Template- and device-level configuration • SSH Proxy <p>Note: Cross stacking between 4000 and 5000 is not supported.</p> |

| Device Model | Latest Supported Release | Standalone Support | Stack Support |
|--------------------|---|--|---|
| 5420M-24T-4YE | Switch Engine 33.5 Fabric Engine 9.3 | <ul style="list-style-type: none"> • Monitor • Template- and device-level configuration • SSH Proxy* • Supplemental CLI* | <ul style="list-style-type: none"> • Monitor • Template- and device-level configuration • SSH Proxy <p>Note: Cross stacking between 4000 and 5000 is not supported.</p> |
| 5420M-24W-4YE | Switch Engine 33.5 Fabric Engine 9.3 | <ul style="list-style-type: none"> • Monitor • Template- and device-level configuration • SSH Proxy* • Supplemental CLI* | <ul style="list-style-type: none"> • Monitor • Template- and device-level configuration • SSH Proxy <p>Note: Cross stacking between 4000 and 5000 is not supported.</p> |
| 5420M-48T-4YE | Switch Engine 33.5 Fabric Engine 9.3 | <ul style="list-style-type: none"> • Monitor • Template- and device-level configuration • SSH Proxy* • Supplemental CLI* | <ul style="list-style-type: none"> • Monitor • Template- and device-level configuration • SSH Proxy <p>Note: Cross stacking between 4000 and 5000 is not supported.</p> |
| 5420M-48W-4YE | Switch Engine 33.5 Fabric Engine 9.3 | <ul style="list-style-type: none"> • Monitor • Template- and device-level configuration • SSH Proxy* • Supplemental CLI* | <ul style="list-style-type: none"> • Monitor • Template- and device-level configuration • SSH Proxy <p>Note: Cross stacking between 4000 and 5000 is not supported.</p> |
| 5420M-16MW-32P-4YE | Switch Engine 33.5 Fabric Engine 9.3 | <ul style="list-style-type: none"> • Monitor • Template- and device-level configuration • SSH Proxy* • Supplemental CLI* | <ul style="list-style-type: none"> • Monitor • Template- and device-level configuration • SSH Proxy <p>Note: Cross stacking between 4000 and 5000 is not supported.</p> |

| Device Model | Latest Supported Release | Standalone Support | Stack Support |
|---------------|---|--|--|
| 5520-24W | Switch Engine 33.5 Fabric Engine 9.3 | <ul style="list-style-type: none"> Monitor Template- and device-level configuration SSH Proxy* Supplemental CLI* | <ul style="list-style-type: none"> Monitor Template- and device-level configuration SSH Proxy <p>Note: Cross stacking between 4000 and 5000 is not supported.</p> |
| 5520-24T | Switch Engine 33.5 Fabric Engine 9.3 | <ul style="list-style-type: none"> Monitor Template- and device-level configuration SSH Proxy* Supplemental CLI* | <ul style="list-style-type: none"> Monitor Template- and device-level configuration SSH Proxy <p>Note: Cross stacking between 4000 and 5000 is not supported.</p> |
| 5520-24T-ACDC | Switch Engine 33.5 Fabric Engine 9.3 | <ul style="list-style-type: none"> Monitor Template- and device-level configuration SSH Proxy* Supplemental CLI* | <p>Switch Engine:</p> <ul style="list-style-type: none"> Monitor Template- and device-level configuration SSH Proxy <p>Note: Cross stacking between 4000 and 5000 is not supported.</p> |
| 5520-24X-ACDC | Switch Engine 33.5 Fabric Engine 9.3 | <ul style="list-style-type: none"> Monitor Template- and device-level configuration SSH Proxy* Supplemental CLI* | <p>Switch Engine:</p> <ul style="list-style-type: none"> Monitor Template- and device-level configuration SSH Proxy <p>Note: Cross stacking between 4000 and 5000 is not supported.</p> |
| 5520-48W | Switch Engine 33.5 Fabric Engine 9.3 | <ul style="list-style-type: none"> Monitor Template- and device-level configuration SSH Proxy* Supplemental CLI* | <ul style="list-style-type: none"> Monitor Template- and device-level configuration SSH Proxy <p>Note: Cross stacking between 4000 and 5000 is not supported.</p> |

| Device Model | Latest Supported Release | Standalone Support | Stack Support |
|----------------|---|--|---|
| 5520-48T | Switch Engine 33.5 Fabric Engine 9.3 | <ul style="list-style-type: none"> • Monitor • Template- and device-level configuration • SSH Proxy* • Supplemental CLI* | <ul style="list-style-type: none"> • Monitor • Template- and device-level configuration • SSH Proxy <p>Note: Cross stacking between 4000 and 5000 is not supported.</p> |
| 5520-48T-ACDC | Switch Engine 33.5 Fabric Engine 9.3 | <ul style="list-style-type: none"> • Monitor • Template- and device-level configuration • SSH Proxy* • Supplemental CLI* | <ul style="list-style-type: none"> • Monitor • Template- and device-level configuration • SSH Proxy <p>Note: Cross stacking between 4000 and 5000 is not supported.</p> |
| 5520-12MW-36W | Switch Engine 33.5 Fabric Engine 9.3 | <ul style="list-style-type: none"> • Monitor • Template- and device-level configuration • SSH Proxy* • Supplemental CLI* | <ul style="list-style-type: none"> • Monitor • Template- and device-level configuration • SSH Proxy <p>Note: Cross stacking between 4000 and 5000 is not supported.</p> |
| 5520-48SE | Switch Engine 33.5 Fabric Engine 9.3 | <ul style="list-style-type: none"> • Monitor • Template- and device-level configuration • SSH Proxy* • Supplemental CLI* | <ul style="list-style-type: none"> • Monitor • Template- and device-level configuration • SSH Proxy <p>Note: Cross stacking between 4000 and 5000 is not supported.</p> |
| 5520-48SE-ACDC | Switch Engine 33.5 Fabric Engine 9.3 | <ul style="list-style-type: none"> • Monitor • Template- and device-level configuration • SSH Proxy* • Supplemental CLI* | <ul style="list-style-type: none"> • Monitor • Template- and device-level configuration • SSH Proxy <p>Note: Cross stacking between 4000 and 5000 is not supported.</p> |

| Device Model | Latest Supported Release | Standalone Support | Stack Support |
|--------------|---|--|--|
| 5520-24X | Switch Engine 33.5 Fabric Engine 9.3 | <ul style="list-style-type: none"> • Monitor • Template- and device-level configuration • SSH Proxy* • Supplemental CLI* | <p>Switch Engine:</p> <ul style="list-style-type: none"> • Monitor • Template- and device-level configuration • SSH Proxy <p>Note: Cross stacking between 4000 and 5000 is not supported.</p> |
| 5720-24MW | Switch Engine 33.5 Fabric Engine 9.3 | <ul style="list-style-type: none"> • Monitor • Template- and device-level configuration • SSH Proxy* • Supplemental CLI* | <p>Switch Engine:</p> <ul style="list-style-type: none"> • Monitor • Template- and device-level configuration • SSH Proxy <p>Note: Cross stacking between 4000 and 5000 is not supported.</p> |
| 5720-48MW | Switch Engine 33.5 Fabric Engine 9.3 | <ul style="list-style-type: none"> • Monitor • Template- and device-level configuration • SSH Proxy* • Supplemental CLI* | <p>Switch Engine:</p> <ul style="list-style-type: none"> • Monitor • Template- and device-level configuration • SSH Proxy <p>Note: Cross stacking between 4000 and 5000 is not supported.</p> |
| 5720-24MXW | Switch Engine 33.5 Fabric Engine 9.3 | <ul style="list-style-type: none"> • Monitor • Template- and device-level configuration • SSH Proxy* • Supplemental CLI* | <p>Switch Engine:</p> <ul style="list-style-type: none"> • Monitor • Template- and device-level configuration • SSH Proxy <p>Note: Cross stacking between 4000 and 5000 is not supported.</p> |

| Device Model | Latest Supported Release | Standalone Support | Stack Support |
|--------------|---|--|--|
| 5720-48MXW | Switch Engine 33.5 Fabric Engine 9.3 | <ul style="list-style-type: none"> • Monitor • Template- and device-level configuration • SSH Proxy* • Supplemental CLI* | <p>Switch Engine:</p> <ul style="list-style-type: none"> • Monitor • Template- and device-level configuration • SSH Proxy <p>Note: Cross stacking between 4000 and 5000 is not supported.</p> |
| 7520-48Y | Switch Engine 33.5 Fabric Engine 9.3 | <p>Switch Engine:</p> <ul style="list-style-type: none"> • Monitor • Template- and device-level configuration • SSH Proxy* • Supplemental CLI* <p>Fabric Engine: Monitor</p> | <p>Switch Engine:</p> <ul style="list-style-type: none"> • Monitor • Template- and device-level configuration • SSH Proxy <p>Note: Cross stacking between 4000 and 5000 is not supported.</p> |
| 7520-48YE | Switch Engine 33.5 Fabric Engine 9.3 | <p>Switch Engine:</p> <ul style="list-style-type: none"> • Monitor • Template- and device-level configuration • SSH Proxy* • Supplemental CLI* <p>Fabric Engine: Monitor</p> | <p>Switch Engine:</p> <ul style="list-style-type: none"> • Monitor • Template- and device-level configuration • SSH Proxy <p>Note: Cross stacking between 4000 and 5000 is not supported.</p> |

| Device Model | Latest Supported Release | Standalone Support | Stack Support |
|--------------|---|--|--|
| 7520-48XT | Switch Engine 33.5 Fabric Engine 9.3 | Switch Engine: <ul style="list-style-type: none"> Monitor Template- and device-level configuration SSH Proxy* Supplemental CLI* Fabric Engine: Monitor | Switch Engine: <ul style="list-style-type: none"> Monitor Template- and device-level configuration SSH Proxy Note: Cross stacking between 4000 and 5000 is not supported. |
| 7720-32c | Switch Engine 33.5 Fabric Engine 9.3 | Switch Engine: <ul style="list-style-type: none"> Monitor Template- and device-level configuration SSH Proxy* Supplemental CLI* Fabric Engine: Monitor | Switch Engine: <ul style="list-style-type: none"> Monitor Template- and device-level configuration SSH Proxy Note: Cross stacking between 4000 and 5000 is not supported. |



Note

* SSH Proxy and Supplemental CLI can be used for configuring additional parameters not currently available within template or device-level configurations.

ExtremeXOS

| Device Model | Latest Supported Release | Standalone Support | Stack Support |
|--------------|--------------------------|--|---------------|
| X435-8P-2T-W | ExtremeXOS 33.5 | <ul style="list-style-type: none"> Monitor Template- and device-level configuration SSH Proxy* Supplemental CLI* | N/A |
| X435-24T-4S | ExtremeXOS 33.5 | <ul style="list-style-type: none"> Monitor Template- and device-level configuration SSH Proxy* Supplemental CLI* | N/A |

| Device Model | Latest Supported Release | Standalone Support | Stack Support |
|-------------------|--------------------------|--|--|
| X435-24P-4S | ExtremeXOS 33.5 | <ul style="list-style-type: none"> • Monitor • Template- and device-level configuration • SSH Proxy* • Supplemental CLI* | N/A |
| X435-8T-4S | ExtremeXOS 33.5 | <ul style="list-style-type: none"> • Monitor • Template- and device-level configuration • SSH Proxy* • Supplemental CLI* | N/A |
| X435-8P-4S | ExtremeXOS 33.5 | <ul style="list-style-type: none"> • Monitor • Template- and device-level configuration • SSH Proxy* • Supplemental CLI* | N/A |
| X440-G2-12p-10GE4 | ExtremeXOS 33.5 | <ul style="list-style-type: none"> • Monitor • Template- and device-level configuration • SSH Proxy* • Supplemental CLI* | <ul style="list-style-type: none"> • Monitor • Template- and device-level configuration • SSH Proxy* • Supplemental CLI* |
| X440-G2-12t-10GE4 | ExtremeXOS 33.5 | <ul style="list-style-type: none"> • Monitor • Template- and device-level configuration • SSH Proxy* • Supplemental CLI* | <ul style="list-style-type: none"> • Monitor • Template- and device-level configuration • SSH Proxy* • Supplemental CLI* |
| X440-G2-24p-10GE4 | ExtremeXOS 33.5 | <ul style="list-style-type: none"> • Monitor • Template- and device-level configuration • SSH Proxy* • Supplemental CLI* | <ul style="list-style-type: none"> • Monitor • Template- and device-level configuration • SSH Proxy* • Supplemental CLI* |
| X440-G2-24t-10GE4 | ExtremeXOS 33.5 | <ul style="list-style-type: none"> • Monitor • Template- and device-level configuration • SSH Proxy* • Supplemental CLI* | <ul style="list-style-type: none"> • Monitor • Template- and device-level configuration • SSH Proxy* • Supplemental CLI* |

| Device Model | Latest Supported Release | Standalone Support | Stack Support |
|------------------------|--------------------------|--|--|
| X440-G2-48p-10GE4 | ExtremeXOS 33.5 | <ul style="list-style-type: none"> • Monitor • Template- and device-level configuration • SSH Proxy* • Supplemental CLI* | <ul style="list-style-type: none"> • Monitor • Template- and device-level configuration • SSH Proxy* • Supplemental CLI* |
| X440-G2-48t-10GE4 | ExtremeXOS 33.5 | <ul style="list-style-type: none"> • Monitor • Template- and device-level configuration • SSH Proxy* • Supplemental CLI* | <ul style="list-style-type: none"> • Monitor • Template- and device-level configuration • SSH Proxy* • Supplemental CLI* |
| X450-G2-24p-GE4 | ExtremeXOS 33.5 | <ul style="list-style-type: none"> • Monitor • Template- and device-level configuration • SSH Proxy* • Supplemental CLI* | Monitor |
| X450-G2-24p-10GE4 | ExtremeXOS 33.5 | <ul style="list-style-type: none"> • Monitor • Template- and device-level configuration • SSH Proxy* • Supplemental CLI* | Monitor |
| X450-G2-48p-10GE4 | ExtremeXOS 33.5 | <ul style="list-style-type: none"> • Monitor • Template- and device-level configuration • SSH Proxy* • Supplemental CLI* | Monitor |
| X460-G2-16mp-32p-10GE4 | ExtremeXOS 33.5 | <ul style="list-style-type: none"> • Monitor • Template- and device-level configuration • SSH Proxy* • S | Monitor |
| X460-G2-24p-10GE4 | ExtremeXOS 33.5 | <ul style="list-style-type: none"> • Monitor • Template- and device-level configuration • SSH Proxy* • Supplemental CLI* | Monitor |

| Device Model | Latest Supported Release | Standalone Support | Stack Support |
|------------------------|--------------------------|--|---------------|
| X460-G2-24p-GE4 | ExtremeXOS 33.5 | <ul style="list-style-type: none"> • Monitor • Template- and device-level configuration • SSH Proxy* • S | Monitor |
| X460-G2-24p-24hp-10GE4 | ExtremeXOS 33.5 | <ul style="list-style-type: none"> • Monitor • Template- and device-level configuration • SSH Proxy* • Supplemental CLI* | Monitor |
| X460-G2-24t-10GE4 | ExtremeXOS 33.5 | <ul style="list-style-type: none"> • Monitor • Template- and device-level configuration • SSH Proxy* • Supplemental CLI* | Monitor |
| X460-G2-24t-GE4 | ExtremeXOS 33.5 | <ul style="list-style-type: none"> • Monitor • Template- and device-level configuration • SSH Proxy* • Supplemental CLI* | Monitor |
| X460-G2-24t-24ht-10GE4 | ExtremeXOS 33.5 | <ul style="list-style-type: none"> • Monitor • Template- and device-level configuration • SSH Proxy* • Supplemental CLI* | Monitor |
| X460-G2-24x-10GE4 | ExtremeXOS 33.5 | <ul style="list-style-type: none"> • Monitor • Template- and device-level configuration • SSH Proxy* • Supplemental CLI* | Monitor |
| X460-G2-48p-10GE4 | ExtremeXOS 33.5 | <ul style="list-style-type: none"> • Monitor • Template- and device-level configuration • SSH Proxy* • Supplemental CLI* | Monitor |
| X460-G2-48t-10GE4 | ExtremeXOS 33.5 | <ul style="list-style-type: none"> • Monitor • Template- and device-level configuration • SSH Proxy* • Supplemental CLI* | Monitor |

| Device Model | Latest Supported Release | Standalone Support | Stack Support |
|-------------------|--------------------------|--|---------------|
| X460-G2-48t-GE4 | ExtremeXOS 33.5 | <ul style="list-style-type: none"> • Monitor • Template- and device-level configuration • SSH Proxy* • Supplemental CLI* | Monitor |
| X460-G2-48x-10GE4 | ExtremeXOS 33.5 | <ul style="list-style-type: none"> • Monitor • Template- and device-level configuration • SSH Proxy* • Supplemental CLI* | Monitor |
| X465-24W | ExtremeXOS 33.5 | <ul style="list-style-type: none"> • Monitor • Template- and device-level configuration • SSH Proxy* • Supplemental CLI* | Monitor |
| X465-48W | ExtremeXOS 33.5 | <ul style="list-style-type: none"> • Monitor • Template- and device-level configuration • SSH Proxy* • Supplemental CLI* | Monitor |
| X465-24MU | ExtremeXOS 33.5 | <ul style="list-style-type: none"> • Monitor • Template- and device-level configuration • SSH Proxy* • Supplemental CLI* | Monitor |
| X465-48P | ExtremeXOS 33.5 | <ul style="list-style-type: none"> • Monitor • Template- and device-level configuration • SSH Proxy* • Supplemental CLI* | Monitor |
| X465-24MU-24W | ExtremeXOS 33.5 | <ul style="list-style-type: none"> • Monitor • Template- and device-level configuration • SSH Proxy* • Supplemental CLI* | Monitor |

**Note**

* SSH Proxy and Supplemental CLI can be used for configuring additional parameters not currently available within template or device-level configurations.

IQ Engine (Cloud Native)

| Device Model | Latest Supported Release |
|--|---|
| SR2208P End of Life | FASTPATH 9.2.1.20 v1.0.1.29 ExtremeCloud IQ Agent 1.1.31 |
| SR2224P End of Life | FASTPATH 9.2.1.20 v1.0.1.29 ExtremeCloud IQ Agent 1.1.31 |
| SR2324P End of Life | FASTPATH 9.2.1.20 v1.0.1.29 ExtremeCloud IQ Agent 1.1.31 |
| SR2348P End of Life | FASTPATH 9.2.1.20 v1.0.1.29 ExtremeCloud IQ Agent 1.1.31 |

VOSS

| Device Model | Latest Supported Release | Standalone Support | Stack Support |
|--------------|--------------------------|--|---------------|
| VSP7432CQ | VOSS 9.3 | <ul style="list-style-type: none"> • Monitor • Template- and device-level configuration • SSH Proxy* • Supplemental CLI* | Not supported |
| VSP7400-48Y | VOSS 9.3 | <ul style="list-style-type: none"> • Monitor • Template- and device-level configuration • SSH Proxy* • Supplemental CLI* | Not supported |
| VSP4900-48P | VOSS 9.3 | <ul style="list-style-type: none"> • Monitor • Template- and device-level configuration • SSH Proxy* • Supplemental CLI* | Not supported |
| VSP4900-24XE | VOSS 9.3 | <ul style="list-style-type: none"> • Monitor • Template- and device-level configuration • SSH Proxy* • Supplemental CLI* | Not supported |
| VSP4900-24S | VOSS 9.3 | <ul style="list-style-type: none"> • Monitor • Template- and device-level configuration • SSH Proxy* • Supplemental CLI* | Not supported |

| Device Model | Latest Supported Release | Standalone Support | Stack Support |
|--------------------|--------------------------|--|---------------|
| VSP4900-12MXU-12XE | VOSS 9.3 | <ul style="list-style-type: none"> • Monitor • Template- and device-level configuration • SSH Proxy* • Supplemental CLI* | Not supported |
| XA1480 | VOSS 8.10 | <ul style="list-style-type: none"> • Monitor • Template- and device-level configuration • SSH Proxy* • Supplemental CLI* | Not supported |
| XA1440 | VOSS 8.10 | <ul style="list-style-type: none"> • Monitor • Template- and device-level configuration • SSH Proxy* • Supplemental CLI* | Not supported |

**Note**

* SSH Proxy and Supplemental CLI can be used for configuring additional parameters not currently available within template or device-level configurations.

Dell EMC

| Device Model | Latest Supported Release |
|--------------|--------------------------|
| N3048P | IQAgent 1.1.29 |
| N1524 | IQAgent 1.1.29 |
| N1524P | IQAgent 1.1.29 |
| N1548 | IQAgent 1.1.29 |
| N1548P | IQAgent 1.1.29 |

Routers

| Device Model | Latest Supported Release | Standalone Support |
|--------------|--------------------------|--|
| XR600 | IQ Engine 10.0.11 | Platform support introduced with IQ Engine 9.0.1 |
| XR600P | IQ Engine 10.0.11 | Platform support introduced with IQ Engine 9.0.1 |
| VGVA | IQ Engine 6.9.7 | |

ExtremeCloud IQ Site Engine

| ExtremeCloud IQ Site Engine Version | Supported Features |
|-------------------------------------|---|
| 25.2.12 | <ul style="list-style-type: none"> • License allocation • Device Assignment to the ExtremeCloud IQ • Device Statistics • Port Statistics • Unmanage/Manage device • Device Group to CCG mapping • Open Site Engine with SSO • Stack members • NAC details update for wireless end-systems • Wired end-systems reported to ExtremeCloud IQ • Detect and report orphaned devices • Compatible with Extreme Platform ONE subscriptions |
| 25.5.10 | <ul style="list-style-type: none"> • License allocation • Device Assignment to the ExtremeCloud IQ • Device Statistics • Port Statistics • Unmanage/Manage device • Device Group to CCG mapping • Open Site Engine with SSO • Stack members • NAC details update for wireless end-systems • Wired end-systems reported to ExtremeCloud IQ • Detect and report orphaned devices • Compatible with Extreme Platform ONE subscriptions |
| 25.5.11 | <ul style="list-style-type: none"> • License allocation • Device Assignment to the ExtremeCloud IQ • Device Statistics • Port Statistics • Unmanage/Manage device • Device Group to CCG mapping • Open Site Engine with SSO • Stack members • NAC details update for wireless end-systems • Wired end-systems reported to ExtremeCloud IQ • Detect and report orphaned devices • Compatible with Extreme Platform ONE subscriptions |

| ExtremeCloud IQ Site Engine Version | Supported Features |
|-------------------------------------|---|
| 25.5.12 | <ul style="list-style-type: none"> • License allocation • Device Assignment to the ExtremeCloud IQ • Device Statistics • Port Statistics • Unmanage/Manage device • Device Group to CCG mapping • Open Site Engine with SSO • Stack members • NAC details update for wireless end-systems • Wired end-systems reported to ExtremeCloud IQ • Detect and report orphaned devices • Compatible with Extreme Platform ONE subscriptions |
| 25.8.10 | <ul style="list-style-type: none"> • License allocation • Device Assignment to the ExtremeCloud IQ • Device Statistics • Port Statistics • Unmanage/Manage device • Device Group to CCG mapping • Open Site Engine with SSO • Stack members • NAC details update for wireless end-systems • Wired end-systems reported to ExtremeCloud IQ • Detect and report orphaned devices • Compatible with Extreme Platform ONE subscriptions |
| 25.8.11 | <ul style="list-style-type: none"> • License allocation • Device Assignment to the ExtremeCloud IQ • Device Statistics • Port Statistics • Unmanage/Manage device • Device Group to CCG mapping • Open Site Engine with SSO • Stack members • NAC details update for wireless end-systems • Wired end-systems reported to ExtremeCloud IQ • Detect and report orphaned devices • Compatible with Extreme Platform ONE subscriptions |

| ExtremeCloud IQ Site Engine Version | Supported Features |
|-------------------------------------|---|
| 25.8.12 | <ul style="list-style-type: none"> • License allocation • Device Assignment to the ExtremeCloud IQ • Device Statistics • Port Statistics • Unmanage/Manage device • Device Group to CCG mapping • Open Site Engine with SSO • Stack members • NAC details update for wireless end-systems • Wired end-systems reported to ExtremeCloud IQ • Detect and report orphaned devices • Compatible with Extreme Platform ONE subscriptions |
| 25.8.13 | <ul style="list-style-type: none"> • License allocation • Device Assignment to the ExtremeCloud IQ • Device Statistics • Port Statistics • Unmanage/Manage device • Device Group to CCG mapping • Open Site Engine with SSO • Stack members • NAC details update for wireless end-systems • Wired end-systems reported to ExtremeCloud IQ • Detect and report orphaned devices • Compatible with Extreme Platform ONE subscriptions |
| 25.11.10 | <ul style="list-style-type: none"> • License allocation • Device Assignment to the ExtremeCloud IQ • Device Statistics • Port Statistics • Unmanage/Manage device • Device Group to CCG mapping • Open Site Engine with SSO • Stack members • NAC details update for wireless end-systems • Wired end-systems reported to ExtremeCloud IQ • Detect and report orphaned devices • Compatible with Extreme Platform ONE subscriptions |

| ExtremeCloud IQ Site Engine Version | Supported Features |
|-------------------------------------|---|
| 25.11.11 | <ul style="list-style-type: none"> • License allocation • Device Assignment to the ExtremeCloud IQ • Device Statistics • Port Statistics • Unmanage/Manage device • Device Group to CCG mapping • Open Site Engine with SSO • Stack members • NAC details update for wireless end-systems • Wired end-systems reported to ExtremeCloud IQ • Detect and report orphaned devices • Compatible with Extreme Platform ONE subscriptions |
| 25.11.12 | <ul style="list-style-type: none"> • License allocation • Device Assignment to the ExtremeCloud IQ • Device Statistics • Port Statistics • Unmanage/Manage device • Device Group to CCG mapping • Open Site Engine with SSO • Stack members • NAC details update for wireless end-systems • Wired end-systems reported to ExtremeCloud IQ • Detect and report orphaned devices • Compatible with Extreme Platform ONE subscriptions |
| 26.02.10 | <ul style="list-style-type: none"> • License allocation • Device Assignment to the ExtremeCloud IQ • Device Statistics • Port Statistics • Unmanage/Manage device • Device Group to CCG mapping • Open Site Engine with SSO • Stack members • NAC details update for wireless end-systems • Wired end-systems reported to ExtremeCloud IQ • Detect and report orphaned devices • Compatible with Extreme Platform ONE subscriptions |

| ExtremeCloud IQ Site Engine Version | Supported Features |
|-------------------------------------|---|
| 26.02.11 | <ul style="list-style-type: none"> • License allocation • Device Assignment to the ExtremeCloud IQ • Device Statistics • Port Statistics • Unmanage/Manage device • Device Group to CCG mapping • Open Site Engine with SSO • Stack members • NAC details update for wireless end-systems • Wired end-systems reported to ExtremeCloud IQ • Detect and report orphaned devices • Compatible with Extreme Platform ONE subscriptions |
| 26.02.12 | <ul style="list-style-type: none"> • License allocation • Device Assignment to the ExtremeCloud IQ • Device Statistics • Port Statistics • Unmanage/Manage device • Device Group to CCG mapping • Open Site Engine with SSO • Stack members • NAC details update for wireless end-systems • Wired end-systems reported to ExtremeCloud IQ • Detect and report orphaned devices • Compatible with Extreme Platform ONE subscriptions |

ExtremeCloud IQ CoPilot

| ExtremeCloud IQ CoPilot Feature | Minimum Firmware | | | | |
|----------------------------------|------------------|---------------|---------------|-------------|------|
| | IQ Engine | Switch Engine | Fabric Engine | Extreme XOS | VOSS |
| Wi-Fi Efficiency | 10.5.2 | — | — | — | — |
| Wi-Fi Capacity | 10.5.2 | — | — | — | — |
| PoE Stability | 10.5.2 | 32.1 | 8.6 | 32.1 | 8.6 |
| Port Efficiency | 10.5.2 | 31.7 | 8.6 | 31.7 | 8.6 |
| DFS Recurrence | 10.5.2 | — | — | — | — |
| Adverse Traffic Patterns | 10.5.2 | 31.7 | 8.6 | 31.7 | 8.6 |
| Wireless Connectivity Experience | 10.5.2 | — | — | — | — |
| Wired Connectivity Experience | — | 31.7 | 8.6 | 31.7 | 8.6 |

| ExtremeCloud IQ CoPilot Feature | Minimum Firmware | | | | |
|---------------------------------|------------------|---------------|---------------|-------------|------|
| | IQ Engine | Switch Engine | Fabric Engine | Extreme XOS | VOSS |
| Hardware Health | 10.5.2 | — | — | — | — |
| Missing VLAN Detection * | 10.7.4 | — | — | — | — |

* Supported on AP3000/AP3000X/AP5010/AP5050U/AP5050D

ExtremeCloud A3

| ExtremeCloud A3 Version | Supported Features |
|-------------------------|---|
| 5.0.1-4 | <ul style="list-style-type: none"> • Licensing • Status Monitoring • SSO • Client Details |



Note

For end of sales and end of service information, see <https://www.extremenetworks.com/support/end-of-sale-and-end-of-support-products>.

Supported Browsers and Display Settings

Desktop and Mobile Browser Support



Note

ExtremeCloud IQ does not support 32-bit browsers.

Table 4: Desktop Browsers

| Desktop Browsers | Version Supported |
|-------------------|-------------------|
| Chrome | v116 |
| Edge | v115 |
| Firefox | v115 |
| Internet Explorer | Not supported |

Table 4: Desktop Browsers (continued)

| Desktop Browsers | Version Supported |
|------------------|-------------------|
| Opera | v60 |
| Safari | v13 |

Table 5: Mobile Browsers

| Mobile Browsers | Version Supported |
|---------------------|-------------------|
| Android Webview | v73 |
| Chrome for Android | v116 |
| Edge | v79 |
| Firefox for Android | v67 |
| Opera for Android | v52 |
| Safari for iOS | v13 |
| Samsung Internet | Not supported |

Display Settings

ExtremeCloud IQ supports display resolutions of 1280 x 1024 or higher.