



ExtremeCloud IQ v25.3.0.159 Release Notes

Enhancements, Fixes, and Supported Devices

9039296-03 Rev AA
June 2025



Copyright © 2025 Extreme Networks, Inc. All rights reserved.

Legal Notice

Extreme Networks, Inc. reserves the right to make changes in specifications and other information contained in this document and its website without prior notice. The reader should in all cases consult representatives of Extreme Networks to determine whether any such changes have been made.

The hardware, firmware, software or any specifications described or referred to in this document are subject to change without notice.

Trademarks

Extreme Networks and the Extreme Networks logo are trademarks or registered trademarks of Extreme Networks, Inc. in the United States and/or other countries.

All other names (including any product names) mentioned in this document are the property of their respective owners and may be trademarks or registered trademarks of their respective companies/owners.

For additional information on Extreme Networks trademarks, see: <https://www.extremenetworks.com/about-extreme-networks/company/legal/trademarks>

Open Source Declarations

Some software files have been licensed under certain open source or third-party licenses.

End-user license agreements and open source declarations can be found at: <https://www.extremenetworks.com/support/policies/open-source-declaration/>



Table of Contents

Abstract.....	iv
Help and Support.....	v
General Release Information.....	6
Current Release: 25.3.0.159.....	6
Release: 25.3.0.159 Addressed Issues.....	6
Release: 25.3.0.153 Addressed Issues.....	6
Release: 25.3.0.149 Addressed Issues.....	6
Release: 25.3.0.145 Addressed Issues.....	6
ExtremeCloud IQ Public IP Address Blocks.....	7
Supported IQ Engine Software.....	8
Previous Release.....	9
New Features in 25.3.0.144.....	9
Addressed Issues in 25.3.0.144.....	13
Known Issues in 25.3.0.159.....	15
Device Support Information.....	18
Controllers.....	18
Access Points.....	19
Universal Hardware.....	19
IQ Engine (Cloud Native).....	20
ExtremeWireless WiNG.....	21
Extreme Wireless.....	22
Switches.....	22
Universal Hardware.....	23
ExtremeXOS.....	40
VOSS.....	45
IQ Engine (Cloud Native).....	46
Dell EMC.....	47
Routers.....	47
ExtremeCloud IQ Site Engine.....	48
ExtremeCloud IQ CoPilot.....	51
ExtremeCloud A3.....	52
Supported Browsers and Display Settings.....	52
Desktop and Mobile Browser Support.....	52
Display Settings.....	52



Abstract

This release notes document for ExtremeCloud IQ version 25.3.0.159 provides comprehensive details on enhancements, new features, addressed issues, and known limitations for network administrators managing the ExtremeCloud IQ platform. Key technical points include support for IQE 10.8.2a for AP4020/AP5020, advanced device operating systems such as ExtremeXOS/Switch Engine (33.2) and VOSS/Fabric Engine (9.1.0.1), alongside IQ Engine versions 10.8.2 for improved network orchestration. Notable new features include LLDP configuration with multicast filters, enhanced ELRP settings for port management, and WPA3-SAE support with Protected Management Frames (PMF) for 6 GHz radios. The AP5020 now supports dynamic packet capture and dual 5 GHz/6 GHz radio modes, improving wireless performance diagnostics. Additionally, new VLAN attributes, real-time RF heat maps, and roaming trail visualization on the client map enhance network management. Addressed issues include performance fixes for AP5020 wired speed display, client session duplication, and syslog hostname configurations. Known issues highlight potential configuration push errors, Wi-Fi 6E support limitations, and unresolved firmware version discrepancies for certain devices. This release is designed for IT professionals and network engineers focused on optimizing and troubleshooting complex wireless deployments.



Help and Support

If you require assistance, contact Extreme Networks using one of the following methods:

Extreme Portal

Search the GTAC (Global Technical Assistance Center) knowledge base; manage support cases and service contracts; download software; and obtain product licensing, training, and certifications.

The Hub

A forum for Extreme Networks customers to connect with one another, answer questions, and share ideas and feedback. This community is monitored by Extreme Networks employees, but is not intended to replace specific guidance from GTAC.

Call GTAC

For immediate support: (800) 998 2408 (toll-free in U.S. and Canada) or 1 (408) 579 2800. For the support phone number in your country, visit www.extremenetworks.com/support/contact.



General Release Information

Current Release: 25.3.0.159

June 2025

Release: 25.3.0.159 Addressed Issues

This release of ExtremeCloud IQ includes several internal enhancements to support additional features within ExtremePlatform ONE Networking. These improvements include better visibility of access points on the ExtremePlatform ONE Networking **Monitor** > **Visualize** page, updated device status reporting, and enhanced database management capabilities.

Release: 25.3.0.153 Addressed Issues

Table 1: Addressed Issues in 25.3.0.153

Feature ID	Feature	Description
XIQ-42801	Support 10.8r2a for AP4020/5020	ExtremeCloud IQ supports IQ Engine 10.8.2a for AP4020 and AP5020 devices.

Release: 25.3.0.149 Addressed Issues

This release of ExtremeCloud IQ resolves issues with configuration push failures for AP4020, AP4000U, AP5010, and AP410C. It also includes enhancements for supporting customer migration within Extreme Platform ONE Networking for MSP.

Release: 25.3.0.145 Addressed Issues

This release of ExtremeCloud IQ resolves issues with data grids and error banners not loading correctly under certain conditions. These internal changes support Extreme Platform ONE Networking functionality.

ExtremeCloud IQ Public IP Address Blocks

Data Center	IP Block	Addresses and Ports
Global Data Center (GDC)	44.234.22.92/30 18.194.95.0/28 34.253.190.192/26 3.234.248.0/27	
Australia (AUS)	13.210.3.192/28	Firewall Address and Port Information
Azure, Canada Central (ACA)	20.151.64.48/28	Firewall Address and Port Information
Azure, US East (AVA)	52.226.89.112/28	Firewall Address and Port Information
Brazil (BR)	18.228.70.16/28	Firewall Address and Port Information
Germany (FRA)	3.67.81.96/27 18.194.95.0/28	Firewall Address and Port Information
India (IN)	13.232.67.8/29 3.6.70.64/29	Firewall Address and Port Information
Ireland (IE)	34.253.190.192/26	Firewall Address and Port Information
Japan (JP)	18.176.203.112/29 13.231.6.232/29 57.181.58.0/28	Firewall Address and Port Information
Netherlands (NL-GCP)	34.91.82.64/27	Firewall Address and Port Information
Singapore (SG-GCP)	34.87.158.80/28	Firewall Address and Port Information
Spain (ES)	18.101.49.128/27	Firewall Address and Port Information
Sweden (SE)	13.48.186.224/29 13.48.4.184/29 13.48.4.240/28	Firewall Address and Port Information
Switzerland (ACH)	51.107.1.192/28	Firewall Address and Port Information
United Arab Emirates (UAE)	3.28.159.128/28	Firewall Address and Port Information
United Kingdom (UK-AGB)	51.143.233.80/28	Firewall Address and Port Information
US East (VA)	34.202.197.0/26 44.192.245.0/26 3.234.248.0/27	Firewall Address and Port Information
US East 2 (VA2)	34.202.197.0/26 44.192.245.0/26 3.234.248.0/27	Firewall Address and Port Information
US-Iowa (IA-GCP)	34.67.130.64/27	Firewall Address and Port Information
US Ohio (OH)	3.145.235.64/26	Firewall Address and Port Information

Supported IQ Engine Software

See the [IQ Engine Release Notes](#) for information about IQ Engine version 10.8.2.



Previous Release

[New Features in 25.3.0.144](#) on page 9

[Addressed Issues in 25.3.0.144](#) on page 13

This section lists the new features, addressed issues, and known issues for the previous release.

New Features in 25.3.0.144

Device OS Support

This release supports the following device operating systems.

Table 2: EXOS/Switch Engine Support Matrix

XIQ Release 25r3	Version	Hardware/Model	XIQ Onboard / Monitor / Config / Local Image Mgmt	Global Download Image
IQAgent Version	0.9.22/1.9.22 (0.9.22 for NOS versions <= 33.2 1.9.22 for NOS versions >= 33.2)			
	—	5120 Universal HW	✓	—
	—	5320-16P-2MXT-2X Universal HW	✓	—
Latest Supported GA Patch	32.7.2.19-patch1-32	—	✓	✓
Latest Supported GA Image	33.3 GA	X465	✓	✓
Previous Supported GA Patch	31.7.4.2 GA	—	—	✓
Previous Supported GA Image	33.3.1.12	—	✓	✓

Table 3: VOSS Fabric Engine Support Matrix

XIQ Release 25r3	Version	Hardware Model	XIQ Onboard / Monitor / Config / Local Image Mgmt	Global Download Image
IQAgent Version	9.2.25			
Latest Supported GA Patch	9.2.0	—	✓	✓
Previous Supported GA Patch	9.1.1	—	✓	✓
Previous Supported GA Image	8.10.7	—	✓	✓

IQ Engine

- IQ Engine 10.8.2

New Hardware Support

No new hardware in this release.

Table 4: New Extreme Essentials Features in 25.3.0.2

Feature ID	Feature	Description
XESS-1842	Remove Facebook social login from Guest Essentials	Removed Facebook social login from ExtremeGuest Essentials.
XESS-1599	Rogue Alarm Detection and Reporting (New Algorithm)	New logic has been introduced to address false rogue detection with the Sync Sanctioned Rogue Alarm button on the Alarms page.

Table 5: New Features in 25.3.0.144

Feature ID	Feature	Description
XIQ-26446	AP5020 - Client mode support 2.4, 5G, 6G	ExtremeCloud IQ supports Client Mode on 2.4 GHz, 5 GHz, and 6 GHz for the AP5020.
XIQ-29745	AP5020 : Support for WPA3 Beacon Protection	Beacon Protection in Wi-Fi 7 is a mechanism that protects Wi-Fi beacon frames from being disrupted or interfered with. This feature is supported on the AP5020 and is configured on the SSID page.
XIQ-30107	AP5020: Support for Spectrum Analyzer 2.4G/5G	Spectrum Intelligence is supported on 2.4 GHz and 5 GHz radios on the AP5020. Note: BT power is required for Spectrum Intelligence on the AP5020.

Table 5: New Features in 25.3.0.144 (continued)

Feature ID	Feature	Description
XIQ-30109	Enhancement to Reduced Neighbor Report (RNR) - AP3K, AP5010, AP5050	Enhanced Reduced Neighbor Report (eRNR) is supported on the AP3000, AP3000X, AP5010, AP5050U, AP5050D. Go to Additional settings > Optional Settings > Other Options to Enable Enhanced RNR . When the 6GHz band is enabled on the main SSID page, Enable enhanced RNR is automatically selected. When the 6 GHz band is deselected, Enable enhanced RNR is automatically deselected.
XIQ-31302	Support for IQE 10.8r2	ExtremeCloud IQ supports IQ Engine 10.8.2.
XIQ-31424	Support for onboarding for CE2000 (medium UCP-based controller application) on the cloud	Introducing the ExtremeCloud IQ Controller Application CE2000 for medium to large campus wireless deployments. The ExtremeCloud IQ Controller Application is hosted on ExtremeCloud Edge Universal Compute Platform. It is a highly scalable and highly available enterprise wireless controller that can support up to 2,000 APs in standalone mode and 4,000 APs in HA pair. The ExtremeCloud IQ Controller Application hosted on ExtremeCloud Edge (Self Orchestration) 2130C, is the latest generation of this market-leading solution targeted to address various customer use cases. See the CE2000 Datasheet and the documentation site for more details.
XIQ-31425	Support for onboarding for CE3000 (large UCP-based controller) on the cloud	Introducing the ExtremeCloud IQ Controller Application CE3000 for large campus wireless deployments. The ExtremeCloud IQ Controller Application is hosted on ExtremeCloud Edge Universal Compute Platform. It is a highly scalable and highly available enterprise wireless controller that can support up to 10,000 APs in standalone mode and 20,000 APs in HA pair. The ExtremeCloud IQ Controller Application hosted on ExtremeCloud Edge (Self Orchestration) 3150C, is the latest generation of this market-leading solution targeted to address various customer use cases. See the CE3000 Datasheet and the documentation site for more details.
XIQ-34322	AP4020: Support for Spectrum Analyzer 2.4G/5G	The AP4020 supports Spectrum Intelligence on 2.4 GHz and 5 GHz radios.
XIQ-34325	AP4020 - Client mode support 2.4, 5G, 6G	ExtremeCloud IQ supports Client Mode on 2.4 GHz, 5 GHz, and 6 GHz for the AP4020.

Table 5: New Features in 25.3.0.144 (continued)

Feature ID	Feature	Description
XIQ-35357	Relocate PMF Settings to the Main SSID Page	Protected Management Frames (PMF) settings have moved from Additional Settings > Advanced Access Security Controls to the main SSID page. This change makes it easier to view and manage the PMF settings when adjusting SSID parameters that might affect them.
XIQ-35544	AP4020: Support for dynamic packet capture	The AP4020 supports Dynamic Packet Capture.
XIQ-35640	Change the user role assignment flow	The ExtremeCloud IQ user creation flow includes VIQ (Global) Scope versus Site scope selection. The Global Scope consists of all sites and the organization. This setting applies to all user roles, including the administrator role.
XIQ-36152	Hanshow ESL: AP5010 USBNET support	The Hanshow dongle is supported from USBNet on the AP5010.
XIQ-36772	AP4020 : Support for AKM 24 for WPA3-Personal (SAE)	Configure WPA-3 Personal (SAE) AKM 24 as an option for Wi-Fi 7 on the SSID page.
XIQ-38147	AP4020 : Support for WPA3 Beacon Protection	Beacon Protection in Wi-Fi 7 is a mechanism that protects Wi-Fi beacon frames from being disrupted or interfered with. This feature is supported on the AP4020 and is configured on the SSID page.
XIQ-39545	New Maps: Show Client Location	Wireless client locations are shown on Real-Time Maps.
XIQ-39609	FIPS Mode Icon	For StateRamp-enabled RDCs only, ExtremeCloud IQ displays a FIPS icon for APs with FIPS-Mode enabled. The AP4020 and AP5020 access points support StateRamp.
XIQ-40688	HotSpot 2.0 Configuration in IQE - AP4000	HotSpot 2.0 is now supported on the AP4000.
XIQ-40689	HotSpot 2.0 Configuration in IQE - AP4020 support	HotSpot 2.0 is now supported in the AP4020.
XIQ-40187	Actions Menu to Enable FIPS Mode	For StateRamp-enabled RDCs only, ExtremeCloud IQ accounts have an Actions menu item to enable or disable FIPS-Mode. The AP4020 and AP5020 access points support StateRamp.
XIQ-40189	FIPS-Enabled Filter	For StateRamp-enabled RDCs only, ExtremeCloud IQ includes a filter to display only APs with FIPS-Mode enabled— Device Function > Access Point (FIPS Enabled) . The AP4020 and AP5020 access points support StateRamp.

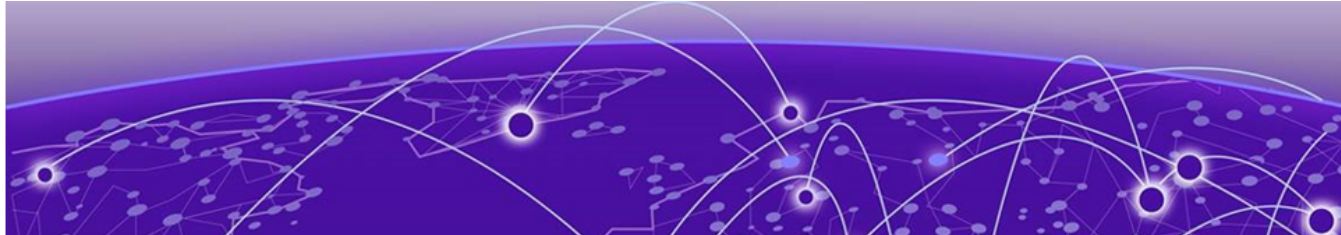
Addressed Issues in 25.3.0.144

Table 6: Addressed Issues in 25.3.0.144

Issue ID	Description
CFD-2874 (00215782)	Resolved an issue with KRACK vulnerabilities.
CFD-3185 (230008)	Resolved an issue where users were unable to migrate APs to NG VHM.
CFD-4389 (00282585)	Resolved an issue where ATOM devices had licensing discrepancies.
CFD-4620 (00295381)	Resolved an issue where applied EK was returning an unknown error.
CFD-8081 (02615516, 02627372)	Resolved an issue where tech data fails to download.
CFD-8467 (02653213)	Resolved an issue where unlinked A3 entries could not be removed from the ExtremeCloud IQ inventory.
CFD-11207 (02940567)	Resolved an issue where WiFix Channel and WiFix Power were not displaying configuration from Manage > Devices .
CFD-13445 (03067382)	Resolved an issue where client information could not be downloaded from Manage > Clients if the user names were in domain\username format.
CFD-13529 (03077071)	Resolved an issue when a user group on a subsequent page is selected, any user group selections made on previous pages were lost.
CFD-13546 (03074483)	Resolved an issue where Spectrum Intelligence scan on channels 100-140 Real-Time FFT, FFT Duty Cycle fields were empty.
CFD-13551 (02979477)	Resolved an issue where searching within Cloud Config Group configurations did not work properly.
CFD-13611 (03081429)	Resolved an issue where some SSIDs could not be cloned.
CFD-13645 (03077090)	Synced customer licenses to gemalto. IT activations reflect what is in ExtremeCloud IQ.
CFD-13674 (03081244, 03084990)	Resolved an issue where the Wi-Fi Statistics Report was not generating if the user accounts specified were MSP accounts.
CFD-13688 (03083372)	Reduced the character length of IP Firewall Policy names to 32 characters, maximum, as longer lengths were causing VIQ import functions to fail.
CFD-13697 (03084949)	Resolved an issue where user was able to connect to a PPSK SSID but the account did not exist in User Management.
CFD-13699 (03081367)	Resolved an issue where the Companion App was not enforcing location assignments for the Installer role.
CFD-13702 (03085479, 03088660)	Resolved an issue where importing a VIQ file resulted in an error regarding RmDashboardDeviceHealthAndUsageCapacity.

Table 6: Addressed Issues in 25.3.0.144 (continued)

Issue ID	Description
CFD-13710 (03085969, 03087801, 03094977)	Resolved an issue where the Organization name would not save when changed in Manage > Planning .
CFD-13739 (03087116)	Resolved an issue where changing the values of a floor plan to/ from feet/meters did not save in Manage > Planning .
CFD-13815 (03091422)	Resolved an issue where the SSID Used by column displayed inaccurate or sporadic data.
CFD-13850 (03090492)	Resolved an issue where importing a .csv file into an Auto-Provisioning rule failed.



Known Issues in 25.3.0.159

The following table lists known product issues. Issues are grouped according to ID prefix and sorted within their group with the most recently logged issue listed first. (Issue IDs are in descending order.)

Table 7: Known Issues in 25.3.0.159

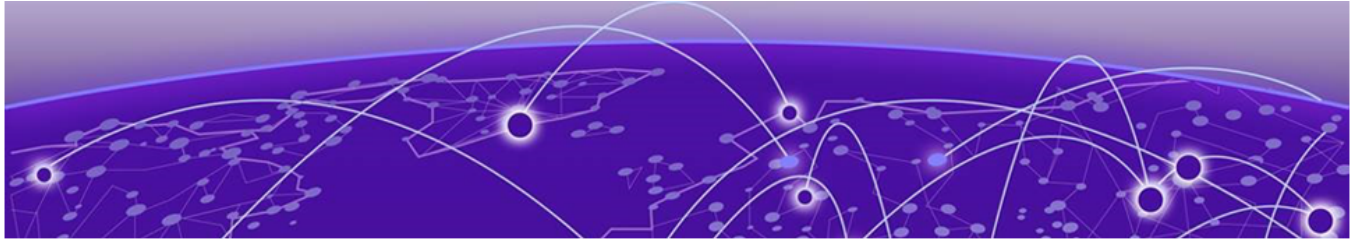
Issue ID	Description
EXOS-37458	When using ExtremeCloud IQ to configure a single port in a VLAN as an LLDP voice port with Med Capabilities and policies and then changing the port type to access or trunk , the LLDP configuration for Med Capabilities appears on ExtremeXOS/Switch Engine devices running EXOS 33.2.
XCP-8418	Follow-up to fix ATOM license logic.
XIQ-39282	After successfully onboarding locally managed APs, a misleading Device Update Failed message might appear in the Last Updated field. This is only a display issue and does not affect any functionality.
XIQ-34912	Clients discovered through node alias or DHCP snooping fingerprint might not immediately appear in the Device 360 Clients table. It can take up to 10 minutes for the new entries to appear in the Device 360 Clients table.
XIQ-34908	When using a stack template with a Link Aggregation Group (LAG), if the LAG has ports from different slots, you must enable Instant Port Profile/Instant Secure Port from the LAG on the template view that contains the master port. This requirement applies to a preexisting Link Aggregation Group in the template, or when creating a new Link Aggregation Group.
XIQ-34846	On wired VOSS and Fabric Engine devices for Cisco Discovery Protocol (CDP), configuration pushed via ExtremeCloud IQ still requires enabling LLDP TX/RX status through device CLI, for a CDP neighbor to establish.
XIQ-34724	Delta configuration push fails for Wifi0 with dual 5G mode when 5G-Low channels are not supported.
XIQ-33709	Some IP VLAN pairs from the Client 360 table and Client pages might be missing if they have multiple IPs learned through Node Alias events.
XIQ-33498	AP5050 AFC 6GHz FCC does not support client mode.

Table 7: Known Issues in 25.3.0.159 (continued)

Issue ID	Description
XIQ-33103	The AFC View on the Manage Device page displays <i>qualified</i> AFC-governed 6 GHz access points. This feature requires version 10.7.2 or higher. The AFC View does not include onboarded devices with a firmware version earlier than the minimum required version. After upgrading to the minimum required version, the AFC View displays the qualified access points.
XIQ-32459	The ExtremeCloud IQ deployment API HTTP Success status code changed from 200 to 202.
XIQ-31639	The IoT heat map is always shown, regardless of whether an IoT profile is configured on the AP. There is no status for IoT radios in the API.
XIQ-31601	A perimeter added or modified from the Planning page does not sync with the Realtime maps page.
XIQ-31433	The Cloud Service component of iBeacon is temporarily disabled. This service will be available in a future release.
XIQ-26907	A delta configuration push error might occur when configuring the port Forwarding Rule for Client Mode. Workaround: Push a complete configuration update.
XIQ-21339	ExtremeCloud IQ does not display the error when aggregation is enabled with a rate-limit configuration.
XIQ-20909	When configuring 6GHz radio for a country that does not support it, the configuration push to the AP3000 fails. Workaround: Revert to 2.4 GHz.
XIQ-19977	The MCast rate configured in an AP template does not take effect when sCLI is presented.
XIQ-19509	Access points go offline when pushed to minimum speed and half duplex transmission mode for eth0, and then they reboot. After the reboot, the configuration reverts back to minimum speed with full duplex.
XIQ-19498	When the AP5010 eth0 interface is operating with maximum speed, changing the transmission type causes ExtremeCloud IQ to also generate a delta CLI for speed.
XIQ-19379	When you initiate a "release to the cloud" from the controller, for an AP3000 that was onboarded as locally managed, the system deletes the AP from ExtremeCloud IQ Controller but not from ExtremeCloud IQ.
XIQ-19368	The user interface overrides Supplemental CLI. If you add an sCLI object and there is a code conflict with the GUI, the GUI has priority. To give the sCLI priority, place the sCLI code at the bottom of the command structure in the audit.
XIQ-19320	The Wi-Fi Interface Transmission power does not update in the Managed Device page after a bulk edit.

Table 7: Known Issues in 25.3.0.159 (continued)

Issue ID	Description
XIQ-12503	Network 360 shows Unknown Error when All Access Points Applications is selected and the user selects both ExtremeWireless WiNG and IQ Engine devices. Workaround: Clear selected ExtremeWireless WiNG devices.
XIQ-5700	Client Trial showed only the currently connected AP when the client roamed to a different AP from the onboarded ExtremeCloud IQ Controller.
CFD-12971 (03040726)	Capwap disconnection for about 1.5 hours due to the capwap server i/o timeout issue.
CFD-13877 (03094673)	Wi-Fi Interface graph does not match Device > Monitoring > Wireless Interface .
CFD-11529 (02957942)	API response data is unclear.
CFD-10699 (02906999)	Universal Access Points failed to complete the WiNG-OS conversion, even after a successful CAPWAP and STUN binding.
CFD-8946 (02710778, 02748750)	License descriptions are automatically cleared when the Activated status is updated.
CFD-7360 (02498292)	For Wing-AP sites, contrary to present implementation, customers expect to see APs offline when ExtremeCloud IQ / nsight policy is not used for that site.
APC-41057	Legend labels on the SR2200/2300 switch stack graph sometimes disappear when attempting to download or print the graph. Workaround: Download one graph at a time, and open the downloaded file before choosing to download again. Note: The SVG option is the most stable format; PNG, JPG, and PDF have spacing issues on the legend section.
APC-21456	In rare cases, ExtremeCloud IQ does not upload some IGMP sub-commands successfully. Note: SR2200/2300 only. Workaround: Use the Supplemental CLI to upload commands when necessary. To use the supplemental CLI tool, go to Global Settings > VIQ Management , and set the Supplemental CLI slider to ON .



Device Support Information

[Controllers](#) on page 18
[Access Points](#) on page 19
[Switches](#) on page 22
[Routers](#) on page 47
[ExtremeCloud IQ Site Engine](#) on page 48
[ExtremeCloud IQ CoPilot](#) on page 51
[ExtremeCloud A3](#) on page 52
[Supported Browsers and Display Settings](#) on page 52

This section lists the devices that ExtremeCloud IQ supports and includes the latest version of the software that each device supports.

Controllers

Device Model	Latest Supported Release	Comments
E1120	XIQC 10.14.01	Monitor only
E2120	XIQC 10.14.01	Monitor only
E2122	XIQC 10.14.01	Monitor only
E3120	XIQC 10.14.01	Monitor only
E3125	XIQC 10.14.01	Monitor only
VE6120	XIQC 10.14.01	Monitor only
VE6120H	XIQC 10.14.01	Monitor only
VE6120K	XIQC 10.14.01	Monitor only
VE6125	XIQC 10.14.01	Monitor only
VE6125K	XIQC 10.14.01	Monitor only
NX5500	WiNG OS 7.9.6.0	Monitor only
NX7500 Series	WiNG OS 7.9.6.0	Monitor only
NX9500 Series	WiNG OS 7.7.1.9	Monitor only
NX9600 Series	WiNG OS 7.9.6.0	Monitor only
RFS4000 Series	WiNG OS 5.9.7.1	Monitor only
RFS6000 Series	WiNG OS 5.9.1.8	Monitor only

Device Model	Latest Supported Release	Comments
RFS7000 Series	WiNG OS 5.8.6.11	Monitor only
VX9000	WiNG OS 7.9.6.0	Monitor only

Access Points

Access Point information is provided in the following sections:

- [Universal Hardware](#) on page 19
- [IQ Engine \(Cloud Native\)](#) on page 20
- [ExtremeWireless WiNG](#) on page 21
- [Extreme Wireless](#) on page 22

Universal Hardware

Device Model	Latest Supported Release	Comments
AP302W	IQ Engine 10.8.2 WiNG OS 7.9.6.0 AP 10.14.1	Platform support introduced with IQ Engine 10.3.1
AP305C	IQ Engine 10.8.2 WiNG OS 7.9.6.0 AP 10.14.1	Platform support introduced with IQ Engine 10.1.1
AP305C-1	IQ Engine 10.8.2 WiNG OS 7.9.6.0 AP 10.14.1	Platform support introduced with IQ Engine 10.4.6
AP305CX	IQ Engine 10.8.2 WiNG OS 7.9.6.0 AP 10.14.1	Platform support introduced with IQ Engine 10.1.1
AP3000	IQ Engine 10.8.2 AP 10.14.1	Platform support introduced with IQ engine 10.6.1
AP3000X	IQ Engine 10.8.2	Platform support introduced with IQ Engine 10.6.1
AP4000	IQ Engine 10.8.2 AP 10.14.1	Platform support introduced with IQ Engine 10.4.1
AP4000-1	IQ Engine 10.8.2 AP 10.14.1	Platform support introduced with IQ Engine 10.4.2
AP4020	IQ Engine 10.8.2a	Platform support introduced with IQ Engine 10.8.1
AP410C	IQ Engine 10.8.2 WiNG OS 7.9.6.0 AP 10.14.1	Platform support introduced with IQ Engine 10.1.2

Device Model	Latest Supported Release	Comments
AP410C-1	IQ Engine 10.8.2 WiNG OS 7.9.6.0 AP 10.14.1	Platform support introduced with IQ Engine 10.4.6
AP460C	IQ Engine 10.8.2 WiNG OS 7.9.6.0 AP 10.14.1	Platform support introduced with IQ Engine 10.1.2
AP460S6C	IQ Engine 10.8.2 WiNG OS 7.9.6.0 AP 10.14.1	Platform support introduced with IQ Engine 10.1.2
AP460S12C	IQ Engine 10.8.2 WiNG OS 7.9.6.0 AP 10.14.1	Platform support introduced with IQ Engine 10.1.2
AP5010	IQ Engine 10.8.2 WiNG OS 7.9.6.0 AP 10.14.1	Platform support introduced with IQ Engine 10.5.1
AP5020	IQ Engine 10.8.2a AP 10.14.1	Platform support introduced with IQ Engine 10.7.2
AP5050U	IQ Engine 10.8.2 AP 10.14.1	Platform support introduced with IQ Engine 10.5.3
AP5050D	IQ Engine 10.8.2 AP 10.14.1	Platform support introduced with IQ Engine 10.5.3
AP510C/CX	IQ Engine 10.8.2b	Platform support introduced with IQ Engine 10.0.8

IQ Engine (Cloud Native)

Device Model	Latest Supported Release	Comments
AP630	IQ Engine 10.8.2	Platform support introduced with IQ Engine 10.0.1. End of Life Information
AP650	IQ Engine 10.8.2	Platform support introduced with IQ Engine 10.0.1. End of Life Information
AP650X	IQ Engine 10.8.2	Platform support introduced with IQ Engine 10.0.1. End of Life Information
AP1130	IQ Engine 10.6.1a	Platform support introduced with IQ Engine 8.2.1. End of Life Information
AP250	IQ Engine 10.6.1a	Platform support introduced with IQ Engine 7.0.2.
AP230	IQ Engine 10.6.1a	Platform support introduced with IQ Engine 8.2.1. End of Life Information

Device Model	Latest Supported Release	Comments
AP150W	IQ Engine 10.6.1a	Platform support introduced with IQ Engine 8.1.1. End of Life Information
AP130	IQ Engine 10.6.1a	Platform support introduced with IQ Engine 8.2.1. End of Life Information
AP122	IQ Engine 10.6.1a	Platform support introduced with IQ Engine 7.0.4.
Atom AP30	IQ Engine 10.6.1a	Platform support introduced with IQ Engine 8.3.2. End of Life Information

ExtremeWireless WiNG

Device Model	Latest Supported Release	Comments
AP560i	WiNG OS 7.9.6.0	Monitor only
AP560h	WiNG OS 7.9.6.0	Monitor only
AP505	WiNG OS 7.9.6.0	Monitor only
AP510i	WiNG OS 7.9.6.0	Monitor only
AP510i-1	WiNG OS 7.9.6.0	Monitor only
AP460i/e	WiNG OS 7.9.6.0	Monitor only
AP410i/e	WiNG OS 7.9.6.0	Monitor only
AP410i-1	WiNG OS 7.9.6.0	Monitor only
AP360i/e	WiNG OS 7.9.6.0	Monitor only
AP310i/e	WiNG OS 7.9.6.0	Monitor only
AP310i/e-1	WiNG OS 7.9.6.0	Monitor Only
AP3000	WiNG OS 7.9.6.0	Monitor Only
AP8533	WiNG OS 7.7.1.11	Monitor only
AP8432	WiNG OS 7.7.1.11	Monitor only
AP8232	WiNG OS 5.9.1.8	Monitor only
AP8222	WiNG OS 5.8.6.11	Monitor only
AP8163	WiNG OS 5.9.7.1	Monitor only
AP8132	WiNG OS 5.9.1.8	Monitor only
AP8122	WiNG OS 5.9.1.8	Monitor only
AP7662	WiNG OS 7.7.1.11	Monitor only
AP7632	WiNG OS 7.7.1.11	Monitor only
AP7622	WiNG OS 5.9.7.1	Monitor only
AP7612	WiNG OS 7.7.1.11	Monitor only
AP7602	WiNG OS 5.9.7.1	Monitor only

Device Model	Latest Supported Release	Comments
AP7562	WiNG OS 7.7.1.11	Monitor only
AP7532	WiNG OS 7.7.1.11	Monitor only
AP7522	WiNG OS 7.7.1.11	Monitor only
AP7502	WiNG OS 5.9.7.1	Monitor only
AP7161	WiNG OS 5.9.1.8	Monitor only
AP7131	WiNG OS 5.8.6.11	Monitor only
AP6562	WiNG OS 5.9.1.8	Monitor only
AP6532	WiNG OS 5.9.1.8	Monitor only
AP6522	WiNG OS 5.9.1.8	Monitor only
AP6521	WiNG OS 5.9.1.8	Monitor only
AP6511	WiNG OS 5.8.6.11	Monitor only

Extreme Wireless

Device Model	Latest Supported Release	Comments
AP3965	ExtremeWireless 10.51	Monitor only
AP3935	ExtremeWireless 10.51	Monitor only
AP3917	ExtremeWireless 10.51	Monitor only
AP3916C	ExtremeWireless 10.51	Monitor only
AP3915	ExtremeWireless 10.51	Monitor only
AP3912	ExtremeWireless 10.51	Monitor only
SA201	ExtremeWireless 10.51	Monitor only

Switches

Switch information is provided in the following sections:

- [Universal Hardware](#) on page 23
- [ExtremeXOS](#) on page 40
- [VOSS](#) on page 45
- [Dell EMC](#) on page 47

For the latest release notes for Fabric Engine and Switch Engine , see the [Extreme Networks Documentation Site](#).

Universal Hardware

Device Model	Latest Supported Release	Standalone Support	Stack Support
4120-24MW-4Y	Switch Engine 33.2	<ul style="list-style-type: none"> Onboard Monitor Template- and device-level configuration SSH Proxy* Supplemental CLI* <p>Note: Pilot license required to configure advanced features.</p>	<ul style="list-style-type: none"> Onboard Monitor Template- and device-level configuration SSH Proxy* Up to 8 unit stacking 200Gb stacking through two built-in QSFP28 ports <p>Note: Can only stack with other 4120 devices. Cross stacking between 4120 and 4220 is not supported. Cross stacking between 4000 and 5000 is not supported.</p>
4120-48MW-4Y	Switch Engine 33.2	<ul style="list-style-type: none"> Onboard Monitor Template- and device-level configuration SSH Proxy* Supplemental CLI* <p>Note: Pilot license required to configure advanced features.</p>	<ul style="list-style-type: none"> Onboard Monitor Template- and device-level configuration SSH Proxy* Up to 8 unit stacking 200Gb stacking through two built-in QSFP28 ports <p>Note: Can only stack with other 4120 devices. Cross stacking between 4120 and 4220 is not supported. Cross stacking between 4000 and 5000 is not supported.</p>

Device Model	Latest Supported Release	Standalone Support	Stack Support
4120-Series-Stack	Switch Engine 33.2	<ul style="list-style-type: none"> Onboard Monitor Template- and device-level configuration SSH Proxy* Supplemental CLI* <p>Note: Pilot license required to configure advanced features.</p>	<ul style="list-style-type: none"> Onboard Monitor Template- and device-level configuration SSH Proxy* Up to 8 unit stacking 200Gb stacking through two built-in QSFP28 ports <p>Note: Can only stack with other 4120 devices. Cross stacking between 4120 and 4220 is not supported. Cross stacking between 4000 and 5000 is not supported.</p>
4220-12P-4X	Switch Engine 33.2	<p>Switch Engine:</p> <ul style="list-style-type: none"> Onboard Monitor Template- and device-level configuration SSH Proxy* Supplemental CLI* <p>Fabric Engine: Monitor</p> <p>Note: Pilot license required to configure advanced features.</p>	<ul style="list-style-type: none"> Onboard Monitor Template- and device-level configuration SSH Proxy* Up to 8 unit stacking 40Gb stacking through two built-in SFP+ uplink ports <p>Note: Can only stack with other 4220 devices. Cross stacking between 4120 and 4220 is not supported. Cross stacking between 4000 and 5000 is not supported.</p>

Device Model	Latest Supported Release	Standalone Support	Stack Support
4220-12T-4X	Switch Engine 33.2	Switch Engine: <ul style="list-style-type: none"> Onboard Monitor Template- and device-level configuration SSH Proxy* Supplemental CLI* Fabric Engine: Monitor Note: Pilot license required to configure advanced features.	<ul style="list-style-type: none"> Onboard Monitor Template- and device-level configuration SSH Proxy* Up to 8 unit stacking 40Gb stacking through two built-in SFP+ uplink ports Note: Can only stack with other 4220 devices. Cross stacking between 4120 and 4220 is not supported. Cross stacking between 4000 and 5000 is not supported.
4220-24P-4X	Switch Engine 33.2	Switch Engine: <ul style="list-style-type: none"> Onboard Monitor Template- and device-level configuration SSH Proxy* Supplemental CLI* Fabric Engine: Monitor Note: Pilot license required to configure advanced features.	<ul style="list-style-type: none"> Onboard Monitor Template- and device-level configuration SSH Proxy* Up to 8 unit stacking 40Gb stacking through two built-in SFP+ uplink ports Note: Can only stack with other 4220 devices. Cross stacking between 4120 and 4220 is not supported. Cross stacking between 4000 and 5000 is not supported.

Device Model	Latest Supported Release	Standalone Support	Stack Support
4220-24T-4X	Switch Engine 33.2	Switch Engine: <ul style="list-style-type: none"> Onboard Monitor Template- and device-level configuration SSH Proxy* Supplemental CLI* Fabric Engine: Monitor Note: Pilot license required to configure advanced features.	<ul style="list-style-type: none"> Onboard Monitor Template- and device-level configuration SSH Proxy* Up to 8 unit stacking 40Gb stacking through two built-in SFP+ uplink ports Note: Can only stack with other 4220 devices. Cross stacking between 4120 and 4220 is not supported. Cross stacking between 4000 and 5000 is not supported.
4220-48P-4X	Switch Engine 33.2	<ul style="list-style-type: none"> Onboard Monitor Template- and device-level configuration SSH Proxy* Supplemental CLI* Note: Pilot license required to configure advanced features.	<ul style="list-style-type: none"> Onboard Monitor Template- and device-level configuration SSH Proxy* Up to 8 unit stacking 40Gb stacking through two built-in SFP+ uplink ports Note: Can only stack with other 4220 devices. Cross stacking between 4120 and 4220 is not supported. Cross stacking between 4000 and 5000 is not supported.

Device Model	Latest Supported Release	Standalone Support	Stack Support
4220-48T-4X	Switch Engine 33.2	<ul style="list-style-type: none"> Onboard Monitor Template- and device-level configuration SSH Proxy* Supplemental CLI* <p>Note: Pilot license required to configure advanced features.</p>	<ul style="list-style-type: none"> Onboard Monitor Template- and device-level configuration SSH Proxy* Up to 8 unit stacking 40Gb stacking through two built-in SFP+ uplink ports <p>Note: Can only stack with other 4220 devices. Cross stacking between 4120 and 4220 is not supported. Cross stacking between 4000 and 5000 is not supported.</p>
4220-4MW-20P-4X	Switch Engine 33.2	<p>Switch Engine:</p> <ul style="list-style-type: none"> Onboard Monitor Template- and device-level configuration SSH Proxy* Supplemental CLI* <p>Fabric Engine: Monitor</p> <p>Note: Pilot license required to configure advanced features.</p>	<ul style="list-style-type: none"> Onboard Monitor Template- and device-level configuration SSH Proxy* Up to 8 unit stacking 40Gb stacking through two built-in SFP+ uplink ports <p>Note: Can only stack with other 4220 devices. Cross stacking between 4120 and 4220 is not supported. Cross stacking between 4000 and 5000 is not supported.</p>

Device Model	Latest Supported Release	Standalone Support	Stack Support
4220-4MW-8P-4X	Switch Engine 33.2	Switch Engine: <ul style="list-style-type: none"> Onboard Monitor Template- and device-level configuration SSH Proxy* Supplemental CLI* Fabric Engine: Monitor Note: Pilot license required to configure advanced features.	<ul style="list-style-type: none"> Onboard Monitor Template- and device-level configuration SSH Proxy* Up to 8 unit stacking 40Gb stacking through two built-in SFP+ uplink ports Note: Can only stack with other 4220 devices. Cross stacking between 4120 and 4220 is not supported. Cross stacking between 4000 and 5000 is not supported.
4220-8MW-40P-4X	Switch Engine 33.2	Switch Engine: <ul style="list-style-type: none"> Onboard Monitor Template- and device-level configuration SSH Proxy* Supplemental CLI* Fabric Engine: Monitor Note: Pilot license required to configure advanced features.	<ul style="list-style-type: none"> Onboard Monitor Template- and device-level configuration SSH Proxy* Up to 8 unit stacking 40Gb stacking through two built-in SFP+ uplink ports Note: Can only stack with other 4220 devices. Cross stacking between 4120 and 4220 is not supported. Cross stacking between 4000 and 5000 is not supported.

Device Model	Latest Supported Release	Standalone Support	Stack Support
4220-8X	Switch Engine 33.2	Switch Engine: <ul style="list-style-type: none"> Onboard Monitor Template- and device-level configuration SSH Proxy* Supplemental CLI* Fabric Engine: Monitor Note: Pilot license required to configure advanced features.	<ul style="list-style-type: none"> Onboard Monitor Template- and device-level configuration SSH Proxy* Up to 8 unit stacking 40Gb stacking through two built-in SFP+ uplink ports Note: Can only stack with other 4220 devices. Cross stacking between 4120 and 4220 is not supported. Cross stacking between 4000 and 5000 is not supported.
4220-Series-Stack	Switch Engine 33.2	<ul style="list-style-type: none"> Onboard Monitor Template- and device-level configuration SSH Proxy* Supplemental CLI* Note: Pilot license required to configure advanced features.	<ul style="list-style-type: none"> Onboard Monitor Template- and device-level configuration SSH Proxy* Up to 8 unit stacking 40Gb stacking through two built-in SFP+ uplink ports Note: Can only stack with other 4220 devices. Cross stacking between 4120 and 4220 is not supported. Cross stacking between 4000 and 5000 is not supported.

Device Model	Latest Supported Release	Standalone Support	Stack Support
5120-24X-4Y	Switch Engine 33.2	<ul style="list-style-type: none"> Onboard Monitor Template- and device-level configuration SSH Proxy* Supplemental CLI* <p>Note: Pilot license required to configure advanced features.</p>	<ul style="list-style-type: none"> Onboard Monitor Template- and device-level configuration SSH Proxy* Up to 8 unit stacking Ability to toggle universal ports from stacking-support enabled to stacking-support disabled Two QSFP28 uplink ports that can operate at 1x100G, 4x10G, or 4x25G <p>Note: Can only stack with other 5120 devices. Cross stacking between 4000 and 5000 is not supported.</p>
5120-24XT-4Y	Switch Engine 33.2	<ul style="list-style-type: none"> Onboard Monitor Template- and device-level configuration SSH Proxy* Supplemental CLI* <p>Note: Pilot license required to configure advanced features.</p>	<ul style="list-style-type: none"> Onboard Monitor Template- and device-level configuration SSH Proxy* Up to 8 unit stacking Ability to toggle universal ports from stacking-support enabled to stacking-support disabled Two QSFP28 uplink ports that can operate at 1x100G, 4x10G, or 4x25G <p>Note: Can only stack with other 5120 devices. Cross stacking between 4000 and 5000 is not supported.</p>

Device Model	Latest Supported Release	Standalone Support	Stack Support
5120-44X-4Y-2C	Switch Engine 33.2	<ul style="list-style-type: none"> Onboard Monitor Template- and device-level configuration SSH Proxy* Supplemental CLI* <p>Note: Pilot license required to configure advanced features.</p>	<ul style="list-style-type: none"> Onboard Monitor Template- and device-level configuration SSH Proxy* Up to 8 unit stacking Ability to toggle universal ports from stacking-support enabled to stacking-support disabled Two QSFP28 uplink ports that can operate at 1x100G, 4x10G, or 4x25G <p>Note: Can only stack with other 5120 devices. Cross stacking between 4000 and 5000 is not supported.</p>
5120-Series-Stack	Switch Engine 33.2	<ul style="list-style-type: none"> Onboard Monitor Template- and device-level configuration SSH Proxy* Supplemental CLI* <p>Note: Pilot license required to configure advanced features.</p>	<ul style="list-style-type: none"> Onboard Monitor Template- and device-level configuration SSH Proxy* Up to 8 unit stacking Ability to toggle universal ports from stacking-support enabled to stacking-support disabled Two QSFP28 uplink ports that can operate at 1x100G, 4x10G, or 4x25G <p>Note: Can only stack with other 5120 devices. Cross stacking between 4000 and 5000 is not supported.</p>

Device Model	Latest Supported Release	Standalone Support	Stack Support
5320-16P-4XE	Switch Engine 33.2 Fabric Engine 9.1.0.1	<ul style="list-style-type: none"> • Monitor • Template- and device-level configuration • SSH Proxy* • Supplemental CLI* 	Switch Engine: <ul style="list-style-type: none"> • Monitor • Template- and device-level configuration • SSH Proxy Note: Cross stacking between 4000 and 5000 is not supported.
5320-16P-4XE-DC	Switch Engine 33.2 Fabric Engine 9.1.0.1	<ul style="list-style-type: none"> • Monitor • Template- and device-level configuration • SSH Proxy* • Supplemental CLI* 	Switch Engine: <ul style="list-style-type: none"> • Monitor • Template- and device-level configuration • SSH Proxy Note: Cross stacking between 4000 and 5000 is not supported.
5320-24T-8XE	Switch Engine 33.2 Fabric Engine 9.1.0.1	<ul style="list-style-type: none"> • Monitor • Template- and device-level configuration • SSH Proxy* • Supplemental CLI* 	<ul style="list-style-type: none"> • Monitor • Template- and device-level configuration • SSH Proxy Note: Cross stacking between 4000 and 5000 is not supported.
5320-24P-8XE	Switch Engine 33.2 Fabric Engine 9.1.0.1	<ul style="list-style-type: none"> • Monitor • Template- and device-level configuration • SSH Proxy* • Supplemental CLI* 	<ul style="list-style-type: none"> • Monitor • Template- and device-level configuration • SSH Proxy Note: Cross stacking between 4000 and 5000 is not supported.
5320-48T-8XE	Switch Engine 33.2 Fabric Engine 9.1.0.1	<ul style="list-style-type: none"> • Monitor • Template- and device-level configuration • SSH Proxy* • Supplemental CLI* 	<ul style="list-style-type: none"> • Monitor • Template- and device-level configuration • SSH Proxy Note: Cross stacking between 4000 and 5000 is not supported.

Device Model	Latest Supported Release	Standalone Support	Stack Support
5320-48P-8XE	Switch Engine 33.2 Fabric Engine 9.1.0.1	<ul style="list-style-type: none"> • Monitor • Template- and device-level configuration • SSH Proxy* • Supplemental CLI* 	<ul style="list-style-type: none"> • Monitor • Template- and device-level configuration • SSH Proxy <p>Note: Cross stacking between 4000 and 5000 is not supported.</p>
5420F-24T-4XE	Switch Engine 33.2 Fabric Engine 9.1.0.1	<ul style="list-style-type: none"> • Monitor • Template- and device-level configuration • SSH Proxy* • Supplemental CLI* 	<ul style="list-style-type: none"> • Monitor • Template- and device-level configuration • SSH Proxy <p>Note: Cross stacking between 4000 and 5000 is not supported.</p>
5420F-24P-4XE	Switch Engine 33.2 Fabric Engine 9.1.0.1	<ul style="list-style-type: none"> • Monitor • Template- and device-level configuration • SSH Proxy* • Supplemental CLI* 	<ul style="list-style-type: none"> • Monitor • Template- and device-level configuration • SSH Proxy <p>Note: Cross stacking between 4000 and 5000 is not supported.</p>
5420F-24S-4XE	Switch Engine 33.2 Fabric Engine 9.1.0.1	<ul style="list-style-type: none"> • Monitor • Template- and device-level configuration • SSH Proxy* • Supplemental CLI* 	<ul style="list-style-type: none"> • Monitor • Template- and device-level configuration • SSH Proxy <p>Note: Cross stacking between 4000 and 5000 is not supported.</p>
5420F-48T-4XE	Switch Engine 33.2 Fabric Engine 9.1.0.1	<ul style="list-style-type: none"> • Monitor • Template- and device-level configuration • SSH Proxy* • Supplemental CLI* 	<ul style="list-style-type: none"> • Monitor • Template- and device-level configuration • SSH Proxy <p>Note: Cross stacking between 4000 and 5000 is not supported.</p>

Device Model	Latest Supported Release	Standalone Support	Stack Support
5420F-48P-4XE	Switch Engine 33.2 Fabric Engine 9.1.0.1	<ul style="list-style-type: none"> • Monitor • Template- and device-level configuration • SSH Proxy* • Supplemental CLI* 	<ul style="list-style-type: none"> • Monitor • Template- and device-level configuration • SSH Proxy <p>Note: Cross stacking between 4000 and 5000 is not supported.</p>
5420F-48P-4XL	Switch Engine 33.2 Fabric Engine 9.1.0.1	<ul style="list-style-type: none"> • Monitor • Template- and device-level configuration • SSH Proxy* • Supplemental CLI* 	<ul style="list-style-type: none"> • Monitor • Template- and device-level configuration • SSH Proxy
5420F-8W-16P-4XE	Switch Engine 33.2 Fabric Engine 9.1.0.1	<ul style="list-style-type: none"> • Monitor • Template- and device-level configuration • SSH Proxy* • Supplemental CLI* 	<ul style="list-style-type: none"> • Monitor • Template- and device-level configuration • SSH Proxy <p>Note: Cross stacking between 4000 and 5000 is not supported.</p>
5420F-16W-32P-4XE	Switch Engine 33.2 Fabric Engine 9.1.0.1	<ul style="list-style-type: none"> • Monitor • Template- and device-level configuration • SSH Proxy* • Supplemental CLI* 	<ul style="list-style-type: none"> • Monitor • Template- and device-level configuration • SSH Proxy <p>Note: Cross stacking between 4000 and 5000 is not supported.</p>
5420F-16MW-32P-4XE	Switch Engine 33.2 Fabric Engine 9.1.0.1	<ul style="list-style-type: none"> • Monitor • Template- and device-level configuration • SSH Proxy* • Supplemental CLI* 	<ul style="list-style-type: none"> • Monitor • Template- and device-level configuration • SSH Proxy <p>Note: Cross stacking between 4000 and 5000 is not supported.</p>

Device Model	Latest Supported Release	Standalone Support	Stack Support
5420M-24T-4YE	Switch Engine 33.2 Fabric Engine 9.1.0.1	<ul style="list-style-type: none"> • Monitor • Template- and device-level configuration • SSH Proxy* • Supplemental CLI* 	<ul style="list-style-type: none"> • Monitor • Template- and device-level configuration • SSH Proxy <p>Note: Cross stacking between 4000 and 5000 is not supported.</p>
5420M-24W-4YE	Switch Engine 33.2 Fabric Engine 9.1.0.1	<ul style="list-style-type: none"> • Monitor • Template- and device-level configuration • SSH Proxy* • Supplemental CLI* 	<ul style="list-style-type: none"> • Monitor • Template- and device-level configuration • SSH Proxy <p>Note: Cross stacking between 4000 and 5000 is not supported.</p>
5420M-48T-4YE	Switch Engine 33.2 Fabric Engine 9.1.0.1	<ul style="list-style-type: none"> • Monitor • Template- and device-level configuration • SSH Proxy* • Supplemental CLI* 	<ul style="list-style-type: none"> • Monitor • Template- and device-level configuration • SSH Proxy <p>Note: Cross stacking between 4000 and 5000 is not supported.</p>
5420M-48W-4YE	Switch Engine 33.2 Fabric Engine 9.1.0.1	<ul style="list-style-type: none"> • Monitor • Template- and device-level configuration • SSH Proxy* • Supplemental CLI* 	<ul style="list-style-type: none"> • Monitor • Template- and device-level configuration • SSH Proxy <p>Note: Cross stacking between 4000 and 5000 is not supported.</p>
5420M-16MW-32P-4YE	Switch Engine 33.2 Fabric Engine 9.1.0.1	<ul style="list-style-type: none"> • Monitor • Template- and device-level configuration • SSH Proxy* • Supplemental CLI* 	<ul style="list-style-type: none"> • Monitor • Template- and device-level configuration • SSH Proxy <p>Note: Cross stacking between 4000 and 5000 is not supported.</p>

Device Model	Latest Supported Release	Standalone Support	Stack Support
5520-24W	Switch Engine 33.2 Fabric Engine 9.1.0.1	<ul style="list-style-type: none"> Monitor Template- and device-level configuration SSH Proxy* Supplemental CLI* 	<ul style="list-style-type: none"> Monitor Template- and device-level configuration SSH Proxy <p>Note: Cross stacking between 4000 and 5000 is not supported.</p>
5520-24T	Switch Engine 33.2 Fabric Engine 9.1.0.1	<ul style="list-style-type: none"> Monitor Template- and device-level configuration SSH Proxy* Supplemental CLI* 	<ul style="list-style-type: none"> Monitor Template- and device-level configuration SSH Proxy <p>Note: Cross stacking between 4000 and 5000 is not supported.</p>
5520-24T-ACDC	Switch Engine 33.2 Fabric Engine 9.1.0.1	<ul style="list-style-type: none"> Monitor Template- and device-level configuration SSH Proxy* Supplemental CLI* 	<p>Switch Engine:</p> <ul style="list-style-type: none"> Monitor Template- and device-level configuration SSH Proxy <p>Note: Cross stacking between 4000 and 5000 is not supported.</p>
5520-24X-ACDC	Switch Engine 33.2 Fabric Engine 9.1.0.1	<ul style="list-style-type: none"> Monitor Template- and device-level configuration SSH Proxy* Supplemental CLI* 	<p>Switch Engine:</p> <ul style="list-style-type: none"> Monitor Template- and device-level configuration SSH Proxy <p>Note: Cross stacking between 4000 and 5000 is not supported.</p>
5520-48W	Switch Engine 33.2 Fabric Engine 9.1.0.1	<ul style="list-style-type: none"> Monitor Template- and device-level configuration SSH Proxy* Supplemental CLI* 	<ul style="list-style-type: none"> Monitor Template- and device-level configuration SSH Proxy <p>Note: Cross stacking between 4000 and 5000 is not supported.</p>

Device Model	Latest Supported Release	Standalone Support	Stack Support
5520-48T	Switch Engine 33.2 Fabric Engine 9.1.0.1	<ul style="list-style-type: none"> • Monitor • Template- and device-level configuration • SSH Proxy* • Supplemental CLI* 	<ul style="list-style-type: none"> • Monitor • Template- and device-level configuration • SSH Proxy <p>Note: Cross stacking between 4000 and 5000 is not supported.</p>
5520-48T-ACDC	Switch Engine 33.2 Fabric Engine 9.1.0.1	<ul style="list-style-type: none"> • Monitor • Template- and device-level configuration • SSH Proxy* • Supplemental CLI* 	<ul style="list-style-type: none"> • Monitor • Template- and device-level configuration • SSH Proxy <p>Note: Cross stacking between 4000 and 5000 is not supported.</p>
5520-12MW-36W	Switch Engine 33.2 Fabric Engine 9.1.0.1	<ul style="list-style-type: none"> • Monitor • Template- and device-level configuration • SSH Proxy* • Supplemental CLI* 	<ul style="list-style-type: none"> • Monitor • Template- and device-level configuration • SSH Proxy <p>Note: Cross stacking between 4000 and 5000 is not supported.</p>
5520-48SE	Switch Engine 33.2 Fabric Engine 9.1.0.1	<ul style="list-style-type: none"> • Monitor • Template- and device-level configuration • SSH Proxy* • Supplemental CLI* 	<ul style="list-style-type: none"> • Monitor • Template- and device-level configuration • SSH Proxy <p>Note: Cross stacking between 4000 and 5000 is not supported.</p>
5520-48SE-ACDC	Switch Engine 33.2 Fabric Engine 9.1.0.1	<ul style="list-style-type: none"> • Monitor • Template- and device-level configuration • SSH Proxy* • Supplemental CLI* 	<ul style="list-style-type: none"> • Monitor • Template- and device-level configuration • SSH Proxy <p>Note: Cross stacking between 4000 and 5000 is not supported.</p>

Device Model	Latest Supported Release	Standalone Support	Stack Support
5520-24X	Switch Engine 33.2 Fabric Engine 9.1.0.1	<ul style="list-style-type: none"> • Monitor • Template- and device-level configuration • SSH Proxy* • Supplemental CLI* 	Switch Engine: <ul style="list-style-type: none"> • Monitor • Template- and device-level configuration • SSH Proxy Note: Cross stacking between 4000 and 5000 is not supported.
5720-24MW	Switch Engine 33.2 Fabric Engine 9.1.0.1	<ul style="list-style-type: none"> • Monitor • Template- and device-level configuration • SSH Proxy* • Supplemental CLI* 	Switch Engine: <ul style="list-style-type: none"> • Monitor • Template- and device-level configuration • SSH Proxy Note: Cross stacking between 4000 and 5000 is not supported.
5720-48MW	Switch Engine 33.2 Fabric Engine 9.1.0.1	<ul style="list-style-type: none"> • Monitor • Template- and device-level configuration • SSH Proxy* • Supplemental CLI* 	Switch Engine: <ul style="list-style-type: none"> • Monitor • Template- and device-level configuration • SSH Proxy Note: Cross stacking between 4000 and 5000 is not supported.
5720-24MXW	Switch Engine 33.2 Fabric Engine 9.1.0.1	<ul style="list-style-type: none"> • Monitor • Template- and device-level configuration • SSH Proxy* • Supplemental CLI* 	Switch Engine: <ul style="list-style-type: none"> • Monitor • Template- and device-level configuration • SSH Proxy Note: Cross stacking between 4000 and 5000 is not supported.

Device Model	Latest Supported Release	Standalone Support	Stack Support
5720-48MXW	Switch Engine 33.2 Fabric Engine 9.1.0.1	<ul style="list-style-type: none"> Monitor Template- and device-level configuration SSH Proxy* Supplemental CLI* 	Switch Engine: <ul style="list-style-type: none"> Monitor Template- and device-level configuration SSH Proxy Note: Cross stacking between 4000 and 5000 is not supported.
7520-48Y	Switch Engine 33.2 Fabric Engine 9.1.0.1	Switch Engine: <ul style="list-style-type: none"> Monitor Template- and device-level configuration SSH Proxy* Supplemental CLI* Fabric Engine: Monitor	Switch Engine: <ul style="list-style-type: none"> Monitor Template- and device-level configuration SSH Proxy Note: Cross stacking between 4000 and 5000 is not supported.
7520-48YE	Switch Engine 33.2 Fabric Engine 9.1.0.1	Switch Engine: <ul style="list-style-type: none"> Monitor Template- and device-level configuration SSH Proxy* Supplemental CLI* Fabric Engine: Monitor	Switch Engine: <ul style="list-style-type: none"> Monitor Template- and device-level configuration SSH Proxy Note: Cross stacking between 4000 and 5000 is not supported.

Device Model	Latest Supported Release	Standalone Support	Stack Support
7520-48XT	Switch Engine 33.2 Fabric Engine 9.1.0.1	Switch Engine: <ul style="list-style-type: none"> Monitor Template- and device-level configuration SSH Proxy* Supplemental CLI* Fabric Engine: Monitor	Switch Engine: <ul style="list-style-type: none"> Monitor Template- and device-level configuration SSH Proxy Note: Cross stacking between 4000 and 5000 is not supported.
7720-32c	Switch Engine 33.2 Fabric Engine 9.1.0.1	Switch Engine: <ul style="list-style-type: none"> Monitor Template- and device-level configuration SSH Proxy* Supplemental CLI* Fabric Engine: Monitor	Switch Engine: <ul style="list-style-type: none"> Monitor Template- and device-level configuration SSH Proxy Note: Cross stacking between 4000 and 5000 is not supported.

**Note**

* SSH Proxy and Supplemental CLI can be used for configuring additional parameters not currently available within template or device-level configurations.

ExtremeXOS

Device Model	Latest Supported Release	Standalone Support	Stack Support
X435-8P-2T-W	ExtremeXOS 33.2	<ul style="list-style-type: none"> Monitor Template- and device-level configuration SSH Proxy* Supplemental CLI* 	N/A
X435-24T-4S	ExtremeXOS 33.2	<ul style="list-style-type: none"> Monitor Template- and device-level configuration SSH Proxy* Supplemental CLI* 	N/A

Device Model	Latest Supported Release	Standalone Support	Stack Support
X435-24P-4S	ExtremeXOS 33.2	<ul style="list-style-type: none"> • Monitor • Template- and device-level configuration • SSH Proxy* • Supplemental CLI* 	N/A
X435-8T-4S	ExtremeXOS 33.2	<ul style="list-style-type: none"> • Monitor • Template- and device-level configuration • SSH Proxy* • Supplemental CLI* 	N/A
X435-8P-4S	ExtremeXOS 33.2	<ul style="list-style-type: none"> • Monitor • Template- and device-level configuration • SSH Proxy* • Supplemental CLI* 	N/A
X440-G2-12p-10GE4	ExtremeXOS 33.2	<ul style="list-style-type: none"> • Monitor • Template- and device-level configuration • SSH Proxy* • Supplemental CLI* 	<ul style="list-style-type: none"> • Monitor • Template- and device-level configuration • SSH Proxy* • Supplemental CLI*
X440-G2-12t-10GE4	ExtremeXOS 33.2	<ul style="list-style-type: none"> • Monitor • Template- and device-level configuration • SSH Proxy* • Supplemental CLI* 	<ul style="list-style-type: none"> • Monitor • Template- and device-level configuration • SSH Proxy* • Supplemental CLI*
X440-G2-24p-10GE4	ExtremeXOS 33.2	<ul style="list-style-type: none"> • Monitor • Template- and device-level configuration • SSH Proxy* • Supplemental CLI* 	<ul style="list-style-type: none"> • Monitor • Template- and device-level configuration • SSH Proxy* • Supplemental CLI*
X440-G2-24t-10GE4	ExtremeXOS 33.2	<ul style="list-style-type: none"> • Monitor • Template- and device-level configuration • SSH Proxy* • Supplemental CLI* 	<ul style="list-style-type: none"> • Monitor • Template- and device-level configuration • SSH Proxy* • Supplemental CLI*

Device Model	Latest Supported Release	Standalone Support	Stack Support
X440-G2-48p-10GE4	ExtremeXOS 33.2	<ul style="list-style-type: none"> • Monitor • Template- and device-level configuration • SSH Proxy* • Supplemental CLI* 	<ul style="list-style-type: none"> • Monitor • Template- and device-level configuration • SSH Proxy* • Supplemental CLI*
X440-G2-48t-10GE4	ExtremeXOS 33.2	<ul style="list-style-type: none"> • Monitor • Template- and device-level configuration • SSH Proxy* • Supplemental CLI* 	<ul style="list-style-type: none"> • Monitor • Template- and device-level configuration • SSH Proxy* • Supplemental CLI*
X450-G2-24p-GE4	ExtremeXOS 33.2	<ul style="list-style-type: none"> • Monitor • Template- and device-level configuration • SSH Proxy* • Supplemental CLI* 	Monitor
X450-G2-24p-10GE4	ExtremeXOS 33.2	<ul style="list-style-type: none"> • Monitor • Template- and device-level configuration • SSH Proxy* • Supplemental CLI* 	Monitor
X450-G2-48p-10GE4	ExtremeXOS 33.2	<ul style="list-style-type: none"> • Monitor • Template- and device-level configuration • SSH Proxy* • Supplemental CLI* 	Monitor
X460-G2-16mp-32p-10GE4	ExtremeXOS 33.2	<ul style="list-style-type: none"> • Monitor • Template- and device-level configuration • SSH Proxy* • S 	Monitor
X460-G2-24p-10GE4	ExtremeXOS 33.2	<ul style="list-style-type: none"> • Monitor • Template- and device-level configuration • SSH Proxy* • Supplemental CLI* 	Monitor

Device Model	Latest Supported Release	Standalone Support	Stack Support
X460-G2-24p-GE4	ExtremeXOS 33.2	<ul style="list-style-type: none"> • Monitor • Template- and device-level configuration • SSH Proxy* • S 	Monitor
X460-G2-24p-24hp-10GE4	ExtremeXOS 33.2	<ul style="list-style-type: none"> • Monitor • Template- and device-level configuration • SSH Proxy* • Supplemental CLI* 	Monitor
X460-G2-24t-10GE4	ExtremeXOS 33.2	<ul style="list-style-type: none"> • Monitor • Template- and device-level configuration • SSH Proxy* • Supplemental CLI* 	Monitor
X460-G2-24t-GE4	ExtremeXOS 33.2	<ul style="list-style-type: none"> • Monitor • Template- and device-level configuration • SSH Proxy* • Supplemental CLI* 	Monitor
X460-G2-24t-24ht-10GE4	ExtremeXOS 33.2	<ul style="list-style-type: none"> • Monitor • Template- and device-level configuration • SSH Proxy* • Supplemental CLI* 	Monitor
X460-G2-24x-10GE4	ExtremeXOS 33.2	<ul style="list-style-type: none"> • Monitor • Template- and device-level configuration • SSH Proxy* • Supplemental CLI* 	Monitor
X460-G2-48p-10GE4	ExtremeXOS 33.2	<ul style="list-style-type: none"> • Monitor • Template- and device-level configuration • SSH Proxy* • Supplemental CLI* 	Monitor
X460-G2-48t-10GE4	ExtremeXOS 33.2	<ul style="list-style-type: none"> • Monitor • Template- and device-level configuration • SSH Proxy* • Supplemental CLI* 	Monitor

Device Model	Latest Supported Release	Standalone Support	Stack Support
X460-G2-48t-GE4	ExtremeXOS 33.2	<ul style="list-style-type: none"> • Monitor • Template- and device-level configuration • SSH Proxy* • Supplemental CLI* 	Monitor
X460-G2-48x-10GE4	ExtremeXOS 33.2	<ul style="list-style-type: none"> • Monitor • Template- and device-level configuration • SSH Proxy* • Supplemental CLI* 	Monitor
X465-24W	ExtremeXOS 33.2	<ul style="list-style-type: none"> • Monitor • Template- and device-level configuration • SSH Proxy* • Supplemental CLI* 	Monitor
X465-48W	ExtremeXOS 33.2	<ul style="list-style-type: none"> • Monitor • Template- and device-level configuration • SSH Proxy* • Supplemental CLI* 	Monitor
X465-24MU	ExtremeXOS 33.2	<ul style="list-style-type: none"> • Monitor • Template- and device-level configuration • SSH Proxy* • Supplemental CLI* 	Monitor
X465-48P	ExtremeXOS 33.2	<ul style="list-style-type: none"> • Monitor • Template- and device-level configuration • SSH Proxy* • Supplemental CLI* 	Monitor
X465-24MU-24W	ExtremeXOS 33.2	<ul style="list-style-type: none"> • Monitor • Template- and device-level configuration • SSH Proxy* • Supplemental CLI* 	Monitor

**Note**

* SSH Proxy and Supplemental CLI can be used for configuring additional parameters not currently available within template or device-level configurations.

VOSS

Device Model	Latest Supported Release	Standalone Support	Stack Support
VSP7432CQ	VOSS 9.1.0.1	<ul style="list-style-type: none"> • Monitor • Template- and device-level configuration • SSH Proxy* • Supplemental CLI* 	Not supported
VSP7400-48Y	VOSS 9.1.0.1	<ul style="list-style-type: none"> • Monitor • Template- and device-level configuration • SSH Proxy* • Supplemental CLI* 	Not supported
VSP4900-48P	VOSS 9.1.0.1	<ul style="list-style-type: none"> • Monitor • Template- and device-level configuration • SSH Proxy* • Supplemental CLI* 	Not supported
VSP4900-24XE	VOSS 9.1.0.1	<ul style="list-style-type: none"> • Monitor • Template- and device-level configuration • SSH Proxy* • Supplemental CLI* 	Not supported
VSP4900-24S	VOSS 9.1.0.1	<ul style="list-style-type: none"> • Monitor • Template- and device-level configuration • SSH Proxy* • Supplemental CLI* 	Not supported
VSP4900-12MXU-12XE	VOSS 9.1.0.1	<ul style="list-style-type: none"> • Monitor • Template- and device-level configuration • SSH Proxy* • Supplemental CLI* 	Not supported

Device Model	Latest Supported Release	Standalone Support	Stack Support
XA1480	VOSS 8.10	<ul style="list-style-type: none"> • Monitor • Template- and device-level configuration • SSH Proxy* • Supplemental CLI* 	Not supported
XA1440	VOSS 8.10	<ul style="list-style-type: none"> • Monitor • Template- and device-level configuration • SSH Proxy* • Supplemental CLI* 	Not supported

**Note**

* SSH Proxy and Supplemental CLI can be used for configuring additional parameters not currently available within template or device-level configurations.

IQ Engine (Cloud Native)

Device Model	Latest Supported Release
SR2024 End of Life	IQ Engine 6.5.12
SR2024P End of Life	IQ Engine 6.5.12
SR2124P End of Life	IQ Engine 6.5.12
SR2148P End of Life	IQ Engine 6.5.12
SR2208P End of Life	FASTPATH 9.2.1.20 v1.0.1.29 ExtremeCloud IQ Agent 1.1.31
SR2224P End of Life	FASTPATH 9.2.1.20 v1.0.1.29 ExtremeCloud IQ Agent 1.1.31
SR2324P End of Life	FASTPATH 9.2.1.20 v1.0.1.29 ExtremeCloud IQ Agent 1.1.31
SR2348P End of Life	FASTPATH 9.2.1.20 v1.0.1.29 ExtremeCloud IQ Agent 1.1.31

Dell EMC

Device Model	Latest Supported Release
N3132PX	IQAgent 1.1.29
N3024EF	IQAgent 1.1.29
N3024EP	IQAgent 1.1.29
N3024ET	IQAgent 1.1.29
N3048EP	IQAgent 1.1.29
N3048ET	IQAgent 1.1.29
N3024	IQAgent 1.1.29
N3024F	IQAgent 1.1.29
N3024P	IQAgent 1.1.29
N3048	IQAgent 1.1.29
N3048P	IQAgent 1.1.29
N2128PX	IQAgent 1.1.29
N2024	IQAgent 1.1.29
N2024P	IQAgent 1.1.29
N2048	IQAgent 1.1.29
N2048P	IQAgent 1.1.29
N1524	IQAgent 1.1.29
N1524P	IQAgent 1.1.29
N1548	IQAgent 1.1.29
N1548P	IQAgent 1.1.29
N1108T-ON	IQAgent 1.1.29
N1108P-ON	IQAgent 1.1.29
N1124T-ON	IQAgent 1.1.29
N1124P-ON	IQAgent 1.1.29
N1148T-ON	IQAgent 1.1.29
N1148P-ON	IQAgent 1.1.29

Routers

Device Model	Latest Supported Release	Standalone Support
XR200P	IQ Engine 6.9.7	Platform support introduced with IQ Engine 6.9.2
XR600	IQ Engine 10.0.11	Platform support introduced with IQ Engine 9.0.1

Device Model	Latest Supported Release	Standalone Support
XR600P	IQ Engine 10.0.11	Platform support introduced with IQ Engine 9.0.1
VGVA	IQ Engine 6.9.7	

ExtremeCloud IQ Site Engine

ExtremeCloud IQ Site Engine Version	Supported Features
24.02.15	<ul style="list-style-type: none"> • License allocation • Device Assignment to the ExtremeCloud IQ Location • Device Statistics • Port Statistics • Unmanage/Manage device • Device Group to CCG mapping • Open Site Engine with SSO • Stack members • NAC details update for wireless end-systems • Wired end-systems reported to ExtremeCloud IQ
24.07.10	<ul style="list-style-type: none"> • License allocation • Device Assignment to the ExtremeCloud IQ Location • Device Statistics • Port Statistics • Unmanage/Manage device • Device Group to CCG mapping • Open Site Engine with SSO • Stack members • NAC details update for wireless end-systems • Wired end-systems reported to ExtremeCloud IQ
24.07.11	<ul style="list-style-type: none"> • License allocation • Device Assignment to the ExtremeCloud IQ Location • Device Statistics • Port Statistics • Unmanage/Manage device • Device Group to CCG mapping • Open Site Engine with SSO • Stack members • NAC details update for wireless end-systems • Wired end-systems reported to ExtremeCloud IQ

ExtremeCloud IQ Site Engine Version	Supported Features
24.10.10	<ul style="list-style-type: none"> • License allocation • Device Assignment to the ExtremeCloud IQ Location • Device Statistics • Port Statistics • Unmanage/Manage device • Device Group to CCG mapping • Open Site Engine with SSO • Stack members • NAC details update for wireless end-systems • Wired end-systems reported to ExtremeCloud IQ
24.10.11	<ul style="list-style-type: none"> • License allocation • Device Assignment to the ExtremeCloud IQ • Device Statistics • Port Statistics • Unmanage/Manage device • Device Group to CCG mapping • Open Site Engine with SSO • Stack members • NAC details update for wireless end-systems • Wired end-systems reported to ExtremeCloud IQ
24.10.12	<ul style="list-style-type: none"> • License allocation • Device Assignment to the ExtremeCloud IQ • Device Statistics • Port Statistics • Unmanage/Manage device • Device Group to CCG mapping • Open Site Engine with SSO • Stack members • NAC details update for wireless end-systems • Wired end-systems reported to ExtremeCloud IQ
24.10.13	<ul style="list-style-type: none"> • License allocation • Device Assignment to the ExtremeCloud IQ • Device Statistics • Port Statistics • Unmanage/Manage device • Device Group to CCG mapping • Open Site Engine with SSO • Stack members • NAC details update for wireless end-systems • Wired end-systems reported to ExtremeCloud IQ

ExtremeCloud IQ Site Engine Version	Supported Features
25.2.10	<ul style="list-style-type: none">• License allocation• Device Assignment to the ExtremeCloud IQ• Device Statistics• Port Statistics• Unmanage/Manage device• Device Group to CCG mapping• Open Site Engine with SSO• Stack members• NAC details update for wireless end-systems• Wired end-systems reported to ExtremeCloud IQ• Detect and report orphaned devices• Compatible with Extreme Platform ONE subscriptions
25.2.11	<ul style="list-style-type: none">• License allocation• Device Assignment to the ExtremeCloud IQ• Device Statistics• Port Statistics• Unmanage/Manage device• Device Group to CCG mapping• Open Site Engine with SSO• Stack members• NAC details update for wireless end-systems• Wired end-systems reported to ExtremeCloud IQ• Detect and report orphaned devices• Compatible with Extreme Platform ONE subscriptions
25.2.12	<ul style="list-style-type: none">• License allocation• Device Assignment to the ExtremeCloud IQ• Device Statistics• Port Statistics• Unmanage/Manage device• Device Group to CCG mapping• Open Site Engine with SSO• Stack members• NAC details update for wireless end-systems• Wired end-systems reported to ExtremeCloud IQ• Detect and report orphaned devices• Compatible with Extreme Platform ONE subscriptions

ExtremeCloud IQ Site Engine Version	Supported Features
25.5.10	<ul style="list-style-type: none"> • License allocation • Device Assignment to the ExtremeCloud IQ • Device Statistics • Port Statistics • Unmanage/Manage device • Device Group to CCG mapping • Open Site Engine with SSO • Stack members • NAC details update for wireless end-systems • Wired end-systems reported to ExtremeCloud IQ • Detect and report orphaned devices • Compatible with Extreme Platform ONE subscriptions
25.5.11	<ul style="list-style-type: none"> • License allocation • Device Assignment to the ExtremeCloud IQ • Device Statistics • Port Statistics • Unmanage/Manage device • Device Group to CCG mapping • Open Site Engine with SSO • Stack members • NAC details update for wireless end-systems • Wired end-systems reported to ExtremeCloud IQ • Detect and report orphaned devices • Compatible with Extreme Platform ONE subscriptions

ExtremeCloud IQ CoPilot

ExtremeCloud IQ CoPilot Feature	Minimum Firmware				
	IQ Engine	Switch Engine	Fabric Engine	Extreme XOS	VOSS
Wi-Fi Efficiency	10.5.2	—	—	—	—
Wi-Fi Capacity	10.5.2	—	—	—	—
PoE Stability	10.5.2	32.1	8.6	32.1	8.6
Port Efficiency	10.5.2	31.7	8.6	31.7	8.6
DFS Recurrence	10.5.2	—	—	—	—
Adverse Traffic Patterns	10.5.2	31.7	8.6	31.7	8.6
Wireless Connectivity Experience	10.5.2	—	—	—	—
Wired Connectivity Experience	—	31.7	8.6	31.7	8.6
Missing VLAN Detection *	10.7.4	—	—	—	—

* Supported on AP3000/AP3000X/AP5010/AP5050U/AP5050D

ExtremeCloud A3

ExtremeCloud A3 Version	Supported Features
5.0.1-4	<ul style="list-style-type: none"> • Licensing • Status Monitoring • SSO • Client Details

Supported Browsers and Display Settings

Desktop and Mobile Browser Support



Note

ExtremeCloud IQ does not support 32-bit browsers.

Table 8: Desktop Browsers

Desktop Browsers	Version Supported
Chrome	v116
Edge	v115
Firefox	v115
Internet Explorer	Not supported
Opera	v60
Safari	v13

Table 9: Mobile Browsers

Mobile Browsers	Version Supported
Android Webview	v73
Chrome for Android	v116
Edge	v79
Firefox for Android	v67
Opera for Android	v52
Safari for iOS	v13
Samsung Internet	Not supported

Display Settings

ExtremeCloud IQ supports display resolutions of 1280 x 1024 or higher.