



# ExtremeCloud IQ Controller Smart RF Reference Guide

Version 10.01.01

9037475-00 Rev AA  
April 2022



Copyright © 2022 Extreme Networks, Inc. All rights reserved.

## Legal Notice

Extreme Networks, Inc. reserves the right to make changes in specifications and other information contained in this document and its website without prior notice. The reader should in all cases consult representatives of Extreme Networks to determine whether any such changes have been made.

The hardware, firmware, software or any specifications described or referred to in this document are subject to change without notice.

## Trademarks

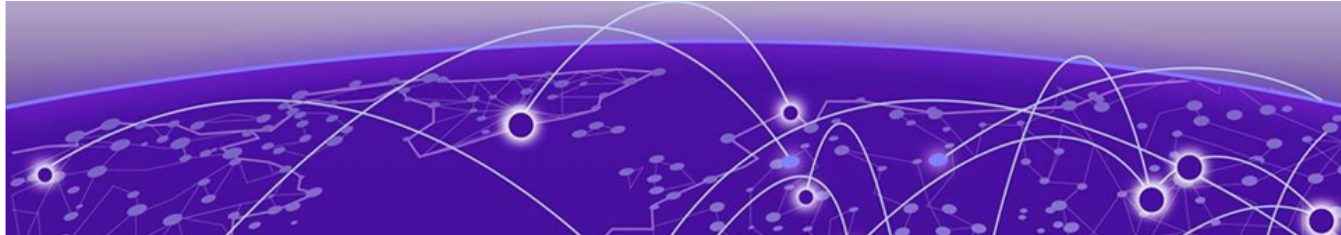
Extreme Networks and the Extreme Networks logo are trademarks or registered trademarks of Extreme Networks, Inc. in the United States and/or other countries.

All other names (including any product names) mentioned in this document are the property of their respective owners and may be trademarks or registered trademarks of their respective companies/owners.

For additional information on Extreme Networks trademarks, see: [www.extremenetworks.com/company/legal/trademarks](http://www.extremenetworks.com/company/legal/trademarks)

## Open Source Declarations

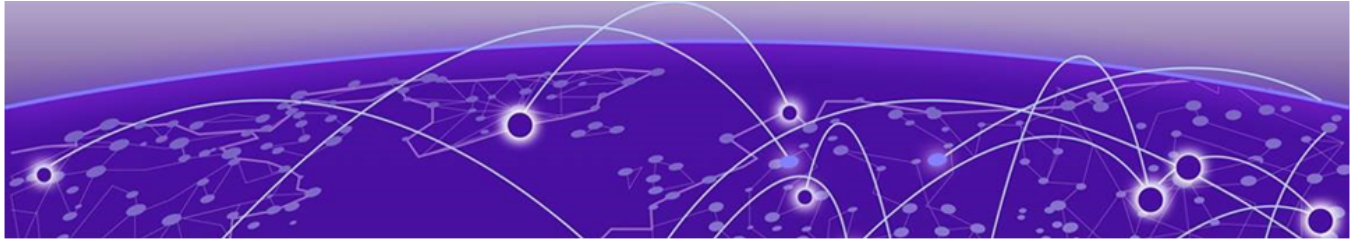
Some software files have been licensed under certain open source or third-party licenses. End-user license agreements and open source declarations can be found at: <https://www.extremenetworks.com/support/policies/open-source-declaration/>



# Table of Contents

---

<b>Preface.....</b>	<b>4</b>
Text Conventions.....	4
Documentation and Training.....	5
Help and Support.....	6
Subscribe to Product Announcements.....	6
Send Feedback.....	6
<b>About Smart RF in ExtremeCloud IQ Controller.....</b>	<b>8</b>
Off-Channel Scanning.....	8
Channel and Power Selection.....	9
Recovery Features.....	10
Interference Recovery.....	11
Neighbor Recovery.....	11
Coverage Hole Recovery.....	12
<b>Smart RF Policy.....</b>	<b>14</b>
Basic Configuration.....	14
Channel and Power.....	16
Understanding Smart RF and Channel Width.....	18
Scanning Configuration.....	19
Recovery.....	21
Select Shutdown.....	25
<b>RF Domain.....</b>	<b>27</b>
<b>Verification and Troubleshooting.....</b>	<b>28</b>
Channel and Power Assignments.....	28
Channel and Power Distribution.....	28
Smart RF Widgets Per Device.....	29
Channel Inspector Report — Smart RF.....	30
Neighbor List.....	31
Energy Graphs.....	32
Smart RF History.....	33
<b>Index.....</b>	<b>35</b>



# Preface

---

Read the following topics to learn about:

- The meanings of text formats used in this document.
- Where you can find additional information and help.
- How to reach us with questions and comments.






## Text Conventions

---

Unless otherwise noted, information in this document applies to all supported environments for the products in question. Exceptions, like command keywords associated with a specific software version, are identified in the text.

When a feature, function, or operation pertains to a specific hardware product, the product name is used. When features, functions, and operations are the same across an entire product family, such as ExtremeSwitching switches or SLX routers, the product is referred to as *the switch* or *the router*.

**Table 1: Notes and warnings**

Icon	Notice type	Alerts you to...
	Tip	Helpful tips and notices for using the product
	Note	Useful information or instructions
	Important	Important features or instructions
	Caution	Risk of personal injury, system damage, or loss of data
	Warning	Risk of severe personal injury

**Table 2: Text**

Convention	Description
screen displays	This typeface indicates command syntax, or represents information as it is displayed on the screen.
The words <i>enter</i> and <i>type</i>	When you see the word <i>enter</i> in this guide, you must type something, and then press the Return or Enter key. Do not press the Return or Enter key when an instruction simply says <i>type</i> .
<b>Key</b> names	Key names are written in boldface, for example <b>Ctrl</b> or <b>Esc</b> . If you must press two or more keys simultaneously, the key names are linked with a plus sign (+). Example: Press <b>Ctrl+Alt+Del</b>
<i>Words in italicized type</i>	Italics emphasize a point or denote new terms at the place where they are defined in the text. Italics are also used when referring to publication titles.
<b>NEW!</b>	New information. In a PDF, this is searchable text.

**Table 3: Command syntax**

Convention	Description
<b>bold</b> text	Bold text indicates command names, keywords, and command options.
<i>italic</i> text	Italic text indicates variable content.
[ ]	Syntax components displayed within square brackets are optional. Default responses to system prompts are enclosed in square brackets.
{ <b>x</b>   <b>y</b>   <b>z</b> }	A choice of required parameters is enclosed in curly brackets separated by vertical bars. You must select one of the options.
<b>x</b>   <b>y</b>	A vertical bar separates mutually exclusive elements.
< >	Nonprinting characters, such as passwords, are enclosed in angle brackets.
...	Repeat the previous element, for example, <i>member</i> [ <i>member</i> ...].
\	In command examples, the backslash indicates a “soft” line break. When a backslash separates two lines of a command input, enter the entire command at the prompt without the backslash.

## Documentation and Training

Find Extreme Networks product information at the following locations:

[Current Product Documentation](#)

[Release Notes](#)

[Hardware and software compatibility](#) for Extreme Networks products

[Extreme Optics Compatibility](#)

[Other resources](#) such as white papers, data sheets, and case studies

Extreme Networks offers product training courses, both online and in person, as well as specialized certifications. For details, visit [www.extremenetworks.com/education/](http://www.extremenetworks.com/education/).

---

## Help and Support

---

If you require assistance, contact Extreme Networks using one of the following methods:

### Extreme Portal

Search the GTAC (Global Technical Assistance Center) knowledge base; manage support cases and service contracts; download software; and obtain product licensing, training, and certifications.

### The Hub

A forum for Extreme Networks customers to connect with one another, answer questions, and share ideas and feedback. This community is monitored by Extreme Networks employees, but is not intended to replace specific guidance from GTAC.

### Call GTAC

For immediate support: (800) 998 2408 (toll-free in U.S. and Canada) or 1 (408) 579 2826. For the support phone number in your country, visit: [www.extremenetworks.com/support/contact](http://www.extremenetworks.com/support/contact)

Before contacting Extreme Networks for technical support, have the following information ready:

- Your Extreme Networks service contract number, or serial numbers for all involved Extreme Networks products
- A description of the failure
- A description of any actions already taken to resolve the problem
- A description of your network environment (such as layout, cable type, other relevant environmental information)
- Network load at the time of trouble (if known)
- The device history (for example, if you have returned the device before, or if this is a recurring problem)
- Any related RMA (Return Material Authorization) numbers

## Subscribe to Product Announcements

You can subscribe to email notifications for product and software release announcements, Field Notices, and Vulnerability Notices.

1. Go to [The Hub](#).
2. In the list of categories, expand the **Product Announcements** list.
3. Select a product for which you would like to receive notifications.
4. Select **Subscribe**.
5. To select additional products, return to the **Product Announcements** list and repeat steps 3 and 4.

You can modify your product selections or unsubscribe at any time.

---

## Send Feedback

---

The Information Development team at Extreme Networks has made every effort to ensure that this document is accurate, complete, and easy to use. We strive to improve our documentation to help you in your work, so we want to hear from you. We welcome all feedback, but we especially want to know about:

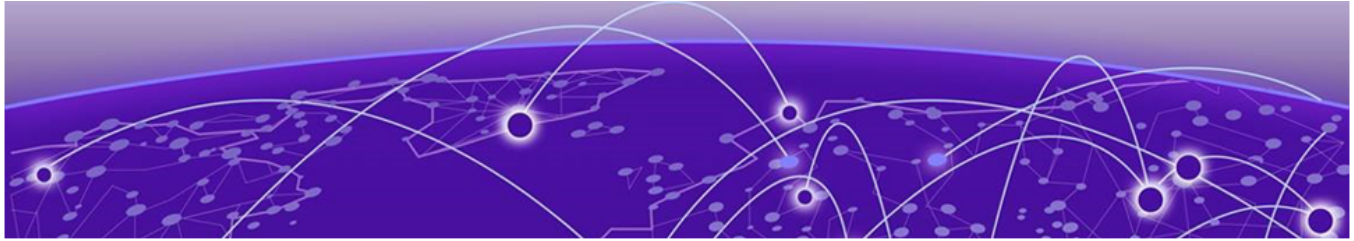
- Content errors, or confusing or conflicting information.

- Improvements that would help you find relevant information.
- Broken links or usability issues.

To send feedback, do either of the following:

- Access the feedback form at <https://www.extremenetworks.com/documentation-feedback/>.
- Email us at [documentation@extremenetworks.com](mailto:documentation@extremenetworks.com).

Provide the publication title, part number, and as much detail as possible, including the topic heading and page number if applicable, as well as your suggestions for improvement.



# About Smart RF in ExtremeCloud IQ Controller

---

[Off-Channel Scanning](#) on page 8

[Channel and Power Selection](#) on page 9

[Recovery Features](#) on page 10

Self Monitoring At Run Time RF Management (Smart RF) is an ExtremeWireless WiNG™ innovation designed to simplify RF configurations for new deployments, while providing on-going optimization as the RF environment changes over time.

Smart RF can reduce deployment costs by scanning the RF environment to determine the best channel and transmit power for each Smart RF-managed radio. Smart RF policies are added to device groups to apply site-specific deployment configurations and self-healing values to groups of access points (APs). Smart RF distributes the decision process between RF Domain Managers (in a Distributed site) or within the ExtremeCloud IQ Controller (in a Centralized Site). Data is used from the RF environment to make intelligent RF configuration decisions.



**Figure 1: Benefits of Smart RF**

Smart RF helps reduce ongoing management and maintenance costs by constantly monitoring the RF environment for external wireless interference, neighbor wireless interference, non-wireless interference, and client connectivity. Smart RF then applies various algorithms to arrive at the optimal channel and power selection for all APs in the network, and constantly reacts to changes in the RF environment. Smart RF is supported on all 802.11n/ac/ax access points with ExtremeCloud IQ Controller.

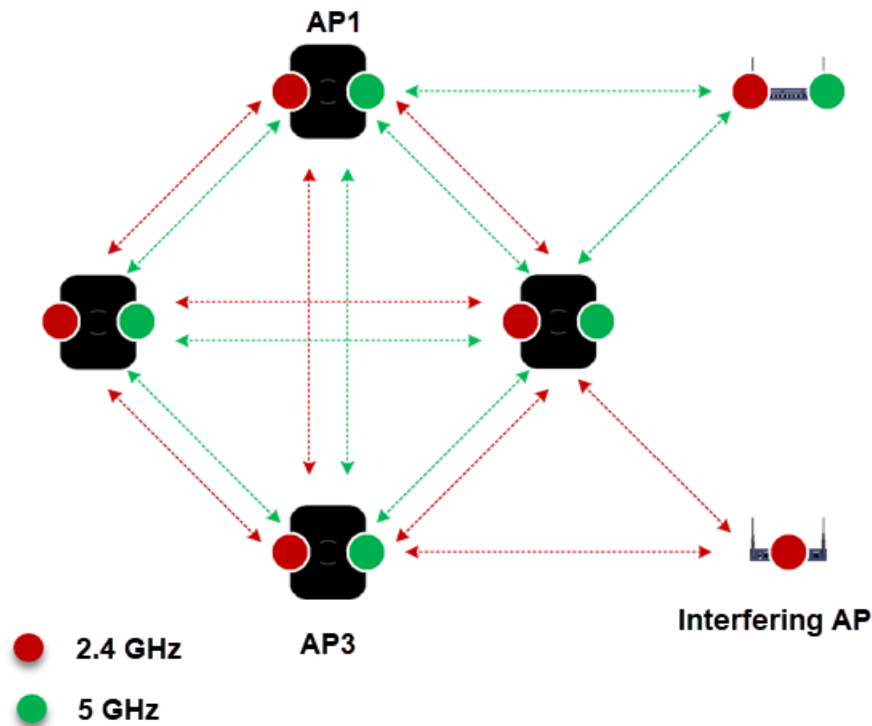
## Off-Channel Scanning

---

Smart RF leverages the Off-Channel Scanning (OCS) capabilities built into each ExtremeWireless WiNG 802.11n/ac/ax AP to monitor the RF environment in real-time on both 2.4 GHz and 5 GHz bands. When Smart RF is enabled, by default, each Smart RF-managed radio will go off-channel for 50 milliseconds

every 6 seconds to monitor the RF environment for each channel. This is configurable. Over time, each radio is able to gain a full picture of the RF environment and learn:

- Neighboring APs
- Sources of Wi-Fi Interference
- Sources of Non-Wi-Fi Interference



**Figure 2: Off-Channel Scanning**

The RF environmental information is collected by each AP and forwarded to the elected RF Domain Manager or the ExtremeCloud IQ Controller who co-ordinates the channel and power decisions. Smart RF uses the RF environmental information to make intelligent power and channel changes as the RF environment evolves over time, and to initiate Neighbor Recovery, Interference Recovery, and Coverage Hole Recovery features.

## Channel and Power Selection

The channels and power values assigned to the Smart RF-managed radios are dependent on the country code assigned to the site, the channel and power configuration defined in the Smart RF Policy, and whether the Smart RF Policy is enabled:

- If the Smart RF Policy assigned to the device group is enabled, the channel and power assigned to each Smart RF-managed radio is based on the channel and power values defined within the Smart RF Policy. The channel and power values are selected based on the neighbor AP placement and interfering devices.
- If the Smart RF Policy assigned to the device group is disabled, the assigned channels are randomly selected from the channel list defined within the Smart RF Policy. The assigned channels persist until the AP is rebooted or until the radios are disabled and re-enabled. The power of each radio is set to the highest permissible value.

Each channel and power parameter is fully configurable within the Smart RF Policy, enabling an administrator to tweak the system to suit their specific wireless deployment needs. For example, administrators can modify the Smart RF policy to exclude DFS channels or lower the minimum and maximum power values for high-density deployments. By default, Smart RF will assign radios a power value between 4 dBm and 17 dBm, a 20 MHz channel to each 2.4 GHz radio, and a 80 MHz channel to each 5 GHz and 6 GHz radio.

**Table 4: Channel and Power Defaults**

Parameter	2.4 GHz Radio Defaults	5 GHz Radio Defaults	6 GHz Radio Defaults
Min Power	4 dBm	4 dBm	4 dBm
Max Power	17 dBm	17 dBm	17 dBm
Channel Width	20 MHz	80 MHz	80 MHz
Channels	1,6,11	21, 25, 36, 40, 44, 48, 52, 56, 60,64, 100, 104, 108, 112, 116, 120, 124, 128, 132, 136, 140, 149, 153, 157, 161, 165, or 173	1, 5, 9, 13, 17, 21, 25, 29, 33, 37, 41, 45, 49, 53, 57,61, 65, 69, 73, 77, 81, 85, 89, 93, 97, 101, 105, 109, 113, 117, 121 125, 129, 133, 137, 141, 145, 149, 153, 157, 161, 165, 169, 173, 177, 181, 185, 189, 193, 197, 201, 205, 209, 213, 217, 221, 225, 229, 233.

Certain 5 GHz channels are subject to FCC / ETSI Dynamic Frequency Selection (DFS) regulations. If a Smart RF-enabled radio is on a channel subject to DFS, it will switch channels if radar is detected on the assigned 5 GHz channel.

## Recovery Features

Smart RF supports self-healing features by monitoring the RF environment in real-time and provides automatic mitigation from potentially problematic events such as:

- neighbor interference
- non-Wi-Fi interference (noise)
- external Wi-Fi interference
- coverage holes
- radio failures

Smart RF employs self-healing to maintain wireless client performance and wireless coverage during dynamic RF environment changes that typically require manual intervention to resolve.



### Note

The Smart RF recovery features are intended to provide a temporary measure until a permanent fix is applied.

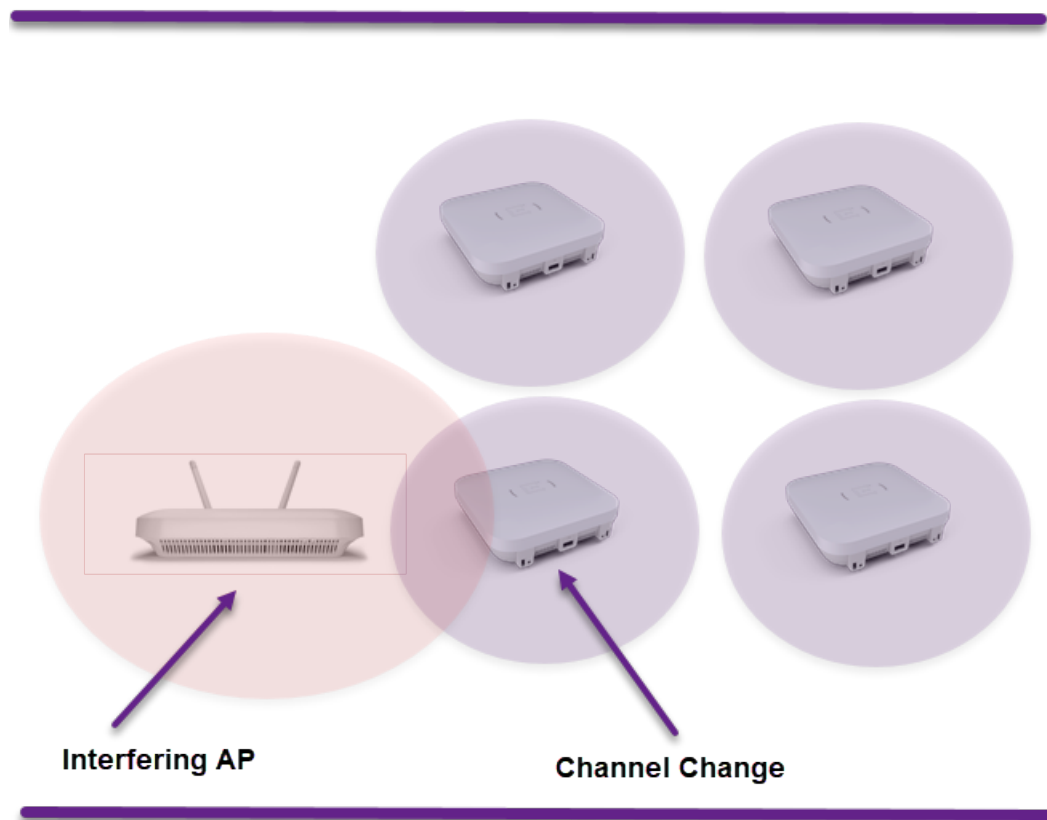
For example, if a remote site is experiencing constant Coverage Hole Recovery events for wireless clients within a specific coverage area, the administrator will need to re-survey the area and determine if deploying an additional AP or different antennas can remediate the coverage problem. Likewise, if an

AP in a coverage area fails or becomes faulty, the administrator will need to replace the failed AP to permanently remediate the problem.

With Interference Recovery, it is possible that the interfering APs are not owned or managed by the company or division. In this case, Smart RF will adjust the channels and power values on the Smart RF managed radios to provide the best possible RF environment around the interfering devices.

## Interference Recovery

Smart RF provides mitigation from wireless sources of interference by measuring noise and interference on the current channel of each Smart RF managed radio. When a noise threshold is exceeded, Smart RF can select an alternative channel for the Smart RF managed radio with less interference. To avoid channel flapping, a hold-timer is defined, which disables interference avoidance for a specific period of time upon detection. Interference Recovery is enabled by default.

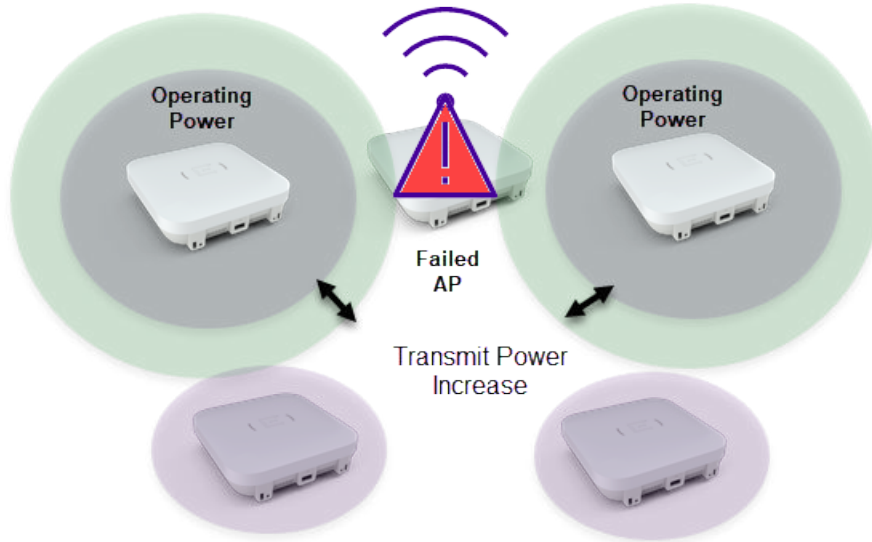


**Figure 3: Interference Recovery**

## Neighbor Recovery

Smart RF provides automatic recovery for failed or faulty access points or faulty antennas by instructing neighboring APs to increase their transmit power to compensate for the coverage loss. Using Smart RF probes, each Smart RF-managed radio maintains an active list of neighboring Smart RF-managed radios. The list includes each neighbors' channel, power, and attenuation. If a neighboring Smart RF

radio drops below a defined power threshold, one or more Smart RF-managed radios can increase their power to compensate for the coverage loss. Neighbor recovery is enabled by default and requires a minimum of four APs to function.



**Figure 4: Neighbor Recovery**



**Note**

A Smart RF managed radio will only change power if a power difference of  $\pm 3$  is necessary. The power adjustment can also be  $>3$ . For example, if a radio is operating at 10 and the Smart RF algorithm determines that the power needs to be 17, the Smart RF radio will increase power to 17 immediately. However, if the power must decrease, it will always decrease in increments of 3.

## Coverage Hole Recovery

Smart RF provides mitigation for coverage issues for wireless clients located at the fringes of the network or in poor coverage areas. When a coverage hole is detected, Smart RF first determines the power compensation needed based on the signal to noise ratio (SNR) for a client as seen by the Smart RF-managed radio. If a client's signal to noise value is above the threshold, the transmit power is increased until the SNR falls below the threshold. Coverage Hole Recovery is enabled by default.

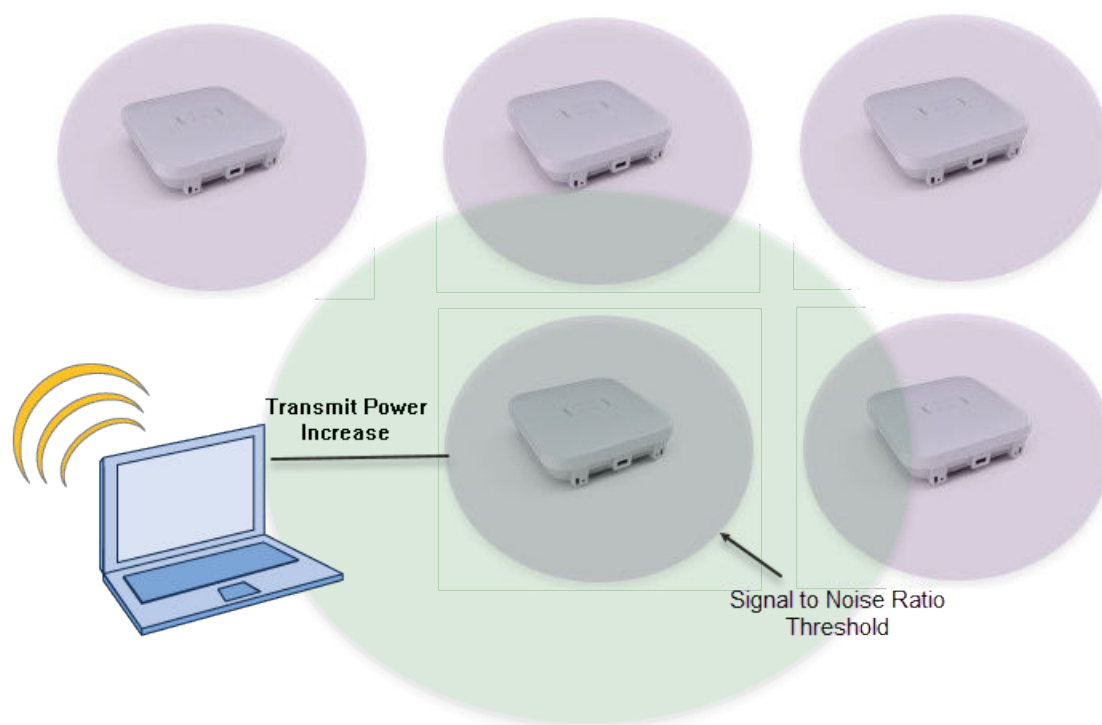
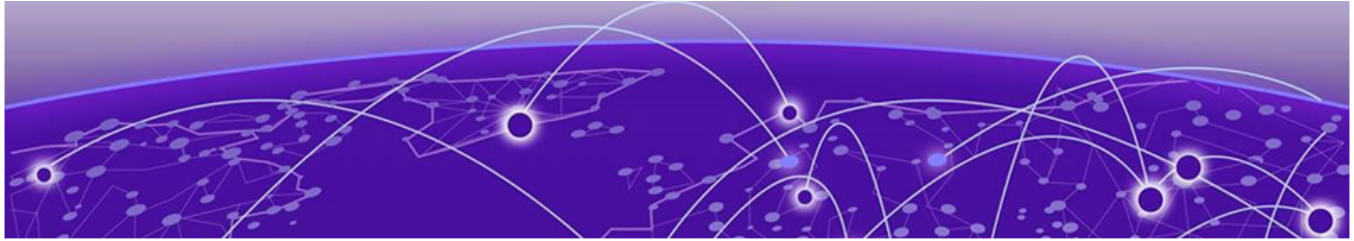


Figure 5: Coverage Hole Recovery



# Smart RF Policy

---

[Basic Configuration](#) on page 14

[Channel and Power](#) on page 16

[Scanning Configuration](#) on page 19

[Recovery](#) on page 21

[Select Shutdown](#) on page 25

Enabling Smart RF requires that you define a Smart RF Policy that is assigned to one or more device groups. By default, at the device group level, you configure each radio to use Smart RF for both channel and transmit power assignments.

Most ExtremeWireless WiNG deployments consist of a common Smart RF Policy that is assigned to each device group in the system. However, customers often define separate Smart RF Policies for stores, offices, and warehouses because APs are deployed differently in each environment, and the wireless clients will have different coverage and density requirements.

Create a Smart RF Policy using the ExtremeCloud IQ Controller user interface. Go to **Configure > Sites > Device Groups > RF Management** and add or edit the RF Management policy assigned to the device group.



## Note

By default, the Smart RF Policy is assigned a **Medium** sensitivity value.

## Basic Configuration

---

The **Basic Configuration** screen displays basic settings that determine the sensitivity, policy state, and Smart RF recovery features.

Select **Smart Monitoring Enabled** to display the Smart RF settings. The Smart Monitoring Enable parameter determines if Off-Channel Scanning (OCS) is enabled or disabled on the Smart RF managed radios. Enabled by default, this parameter allows Smart RF managed radios to monitor their coverage areas for the Neighbor Recovery and Interference Recovery features.

## Edit RF Management Policy

Name	
Default Smart RF	

---

BASIC

CHANNEL AND POWER

SCANNING

RECOVERY

SELECT SHUTDOWN

---

Smart Monitoring Enabled

☒

Sensitivity

Medium ▼

Interference Recovery

☒

Coverage Hole Recovery

☒

Neighbor Recovery

☒

**Figure 6: Basic tab**

The Basic Settings parameters are used to determine the Off-Channel Scanning (OCS) aggressiveness used by Smart RF for monitoring and configuration. Changing the Smart RF Sensitivity modifies values in the **Scanning Configuration**, **Neighbor Recovery**, **Interference Recovery**, and **Coverage Hole Recovery** screens. A best practice is to use the default **Medium** Sensitivity. It has been proven to work well in retail, office, and warehouse environments. If customization is required, base your customizations on the **Medium** Sensitivity values.

The additional Basic Settings parameters determine if the Smart RF Policy is enabled and which Recovery features are enabled. Deciding which Recovery features to enable is determined by the AP placement and overlapping coverage provided at each site.



### Note

Recovery features can operate correctly only if adequate coverage and overlap has been designed into the system. A site survey and proper deployment for Smart RF is required for Recovery to work correctly.



### Note

If the Smart RF Policy is disabled but assigned to an RF Domain, the access point radio channels are assigned randomly from the defined channel settings in the **Channel and Power Configuration** screen. The transmit power for each radio is set to the maximum permitted value.

## Channel and Power

The **Channel and Power** screen in the Smart RF Policy includes the following configuration sections:

- **Power Settings** – Determine the minimum and maximum transmit power values assigned to Smart RF managed radios.
- **Channel Settings** – Determine the pool of channels and channel widths assigned to the Smart RF managed radios.

### Edit RF Management Policy

Name

Default Smart RF

BASIC

CHANNEL AND POWER

SCANNING

RECOVERY

SELECT SHUTDOWN

Radio	5 GHz	2.4 GHz	6 GHz
Channel Width	20MHz ▾	20MHz ▾	160MHz ▾
Min Tx Power [dBm]	7	7	4
Max Tx Power [dBm]	10	10	17
Channel Plan	All Non-DFS Channels ▾ ⓘ	Custom ▾	All Channels ▾ ⓘ

Configure


Figure 7: Channel and Power tab

The Power Settings parameters determines the minimum and maximum power values (in dBm) that can be assigned to Smart RF managed radios. By default, each radio is assigned a transmit power value between 4 – 17 dBm, which can be configured by modifying the Minimum Power and Maximum Power parameters for each radio type.



**Note**  
The power specified here is per chain.

As a general best practice, do not increase the Maximum Power values for the radios beyond the default 17 dBm value. The default value has been defined to provide a 3 dBm margin for the Neighbor Recovery and Coverage Hole Recovery features. If each radio in the system is operating at a maximum of 20 dBm, the Smart RF managed radios will be unable to increase the transmit power if a neighboring AP fails or a coverage hole is detected.



**Note**  
Only increase the Maximum Power values if the Neighbor Recovery and Coverage Hole Recovery features are disabled.

The Channel Settings parameters define the pool of channels that can be assigned to the Smart RF-managed radios in addition to the channel width (20 MHz, 40 MHz, 80 MHz, or 160 MHz). By default, the

2.4 GHz radios are assigned a 20 MHz wide channel, and the 5 GHz and 6 GHz radios are assigned an 160 MHz wide channel. (Although, most AP models will not opt for a channel width above 80 MHz.)

**Note**

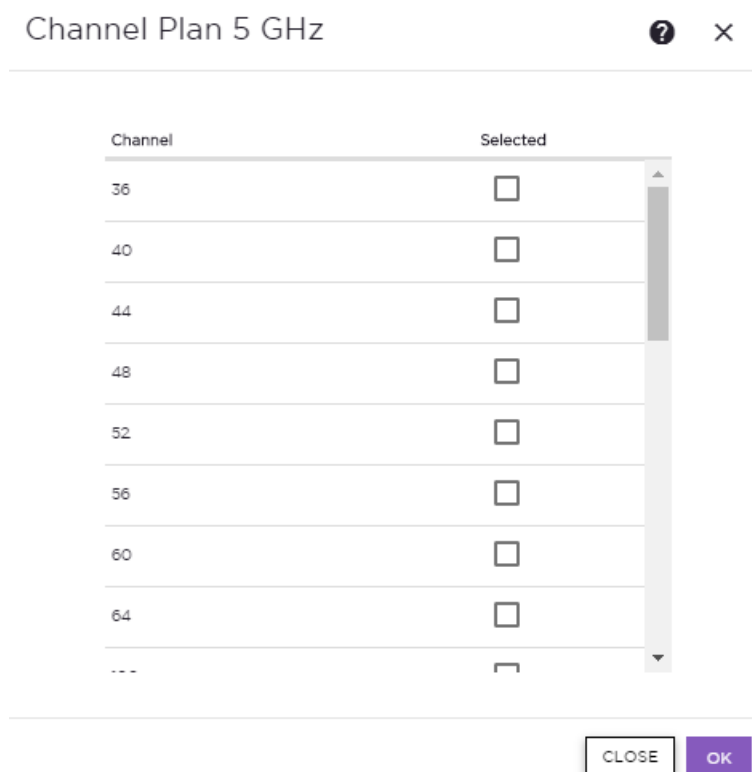
The 80 MHz wide channel is supported by the 802.11ac/ax radios only.

- **2.4 GHz Radios** – Smart RF will assign a 20 MHz wide channel (1, 6, or 11) to each Smart RF managed radio.
- **5 GHz Radios** – Smart RF will assign a permitted 20 MHz, 40 MHz, 80 MHz, or 160 MHz channel, provided that the AP model supports 160 MHz. (21, 25, 36, 40, 44, 48, 52, 56, 60, 64, 100, 104, 108, 112, 116, 120, 124, 128, 132, 136, 140, 149, 153, 157, 161, 165, or 173) to each Smart RF-managed radio.
- **6 GHz Radios** – Smart RF will assign a permitted 20 MHz, 40 MHz, 80 MHz, or 160 MHz channel.

**PSC Channels** — Because numerous channels are offered on the 6 GHz band, it is a best practice to configure the Preferred Scanning Channel (PSC) so that the amount of probing is kept to a minimum. Preferred channels function as primary channels at each channel width: 20, 40, 80, and 160 MHz.

This plan includes the following channels: 1, 5, 9, 13, 17, 21, 25, 29, 33, 37, 41, 45, 49, 53, 57, 61, 65, 69, 73, 77, 81, 85, 89, 93, 97, 101, 105, 109, 113, 117, 121, 125, 129, 133, 137, 141, 145, 149, 153, 157, 161, 165, 169, 173, 177, 181, 185, 189, 193, 197, 201, 205, 209, 213, 217, 221, 225, 229, 233.

A best practice is to not go above the 80 MHz channel width unless you are certain that your RF environment is clear. Otherwise, use the highest available channel width on the 5 GHz band in low density deployments and 20 MHz channel width in high density environments where channel reuse must be achieved.



**Figure 8: Channel Plan dialog**

For 5 GHz Smart RF managed radios, consider removing channels from the available channel list. For example, consider removing channels subject to Dynamic Frequency Selection (DFS) to minimize the impact to wireless clients if a radar is detected. It may also be desirable to remove certain channels for voice handsets to optimize roaming or legacy 802.11a devices, which do not support the UNII2/2e high band.

#### Related Topics

[Understanding Smart RF and Channel Width](#) on page 18

## Understanding Smart RF and Channel Width

ExtremeCloud IQ Controller Smart RF can ensure that the operating channel width does not conflict with radio band compliance limitations. Your channel width selection is considered when determining the optimum channel width, but it is not guaranteed. ExtremeCloud IQ Controller Smart RF uses data from the Neighbor Report to determine the best channel width. If your selected channel width is restricted by radio band compliance, Smart RF selects the next lower channel width. The minimum width is 20 MHz.



#### Important

If the channel plan does not include a channel width that meets compliance restrictions, the radio channel is disabled.

Smart RF runs the assessment for best channel while considering your desired channel width. The highest channel width (160 MHz) is selected by default for 5 GHz and 6 GHz radios. To allow Smart RF

to determine the best possible channel width without you providing a desired width, select 160 MHz and Smart RF will automatically reduce the width as appropriate to configure the optimum width, provided that the AP model supports 160 MHz.

**Note**

Imported configurations previously set to Auto automatically convert to 160 MHz and are reduced appropriately.

## Scanning Configuration

---

The **Scanning Configuration** screen in the Smart RF Policy includes the following configuration sections:

- **Monitoring Configuration** – Enables / disables Off-Channel Scanning (OCS) for Neighbor Recovery and Interference Recovery features.
- **Scanning Configuration** – Determines the frequency of Off-Channel Scanning (OCS), deciding which channels are scanned, and how Smart RF uses OCS when Voice or Power Save Poling wireless clients are detected.

### OCS Monitoring Awareness

Smart RF relies on Off-Channel Scanning (OCS) to monitor the RF environment in real-time, enabling the Smart RF-managed radios to adapt to changes in the RF environment in real-time. Smart RF-managed radios that go off-channel can impact certain devices; therefore, Smart RF is adaptive. By default it prevents OCS on a Smart RF-managed radio if it detects an active voice call or if packets are queued for clients in Power Save (PS) dozing state.

Voice and PS awareness is set to dynamic mode by default. When in dynamic mode, a Smart RF-managed radio can avoid going off-channel when a voice call is in progress, or packets are queued for PS clients. You can also set Voice or PS awareness to strict mode. Strict mode prevents OCS when a Voice or PS wireless client is associated to a Smart RF-managed radio. Additionally, to prevent OCS, you can define a Client Aware Scanning threshold to determine the number of associated wireless clients on a given Smart RF-managed radio.

If the deployment includes wireless devices that support PS or Voice, some Smart RF-managed radios may not be able to go off-channel for an extended period of time, which means those radios may not have the current interference or neighbor data.

### Scanning Configuration

The Scanning Configuration determines the Off-Channel Scanning (OCS) configuration parameters assigned to the Smart RF managed radios. The values for the Frequency, Extended Scan, and Sample Count are assigned automatically to the most optimum values based on the Sensitivity value selected in the **Basic Configuration** screen. These values can also be modified when setting the Sensitivity value to **Custom**.

The Client Aware Scanning parameter can also be optionally enabled to determine a threshold for the number of associated wireless clients on a Smart RF managed radio before it avoids going off-channel.

The Duration, Frequency, Extended Scan Frequency, and Sample count values determine how often and for how long Smart RF managed radios go off-channel, and how much data is recorded. The following figure provides a detailed overview of each OCS parameter:

### Duration

The amount of time in milliseconds that a Smart RF managed radio remains off-channel when performing a scan. The default setting is 50 milliseconds.

### Frequency

The frequency in which Smart RF managed radios change channels for an off-channel scan. The default setting is 6 seconds when you select a Medium Sensitivity setting.

### Extended Scan Frequency

Smart RF performs an off-channel scan of a single channel every 6 seconds, with a total of 10 off-channel scans in a one-minute period. Every nth time (Extended Scan Frequency value) the Smart RF managed radio performs an extended scan of the environment as a whole, including outside noise factors.

The default is 5 when you select a Medium Sensitivity setting.

### Sample Count

The number of samples that each Smart RF managed radio takes before reporting to ExtremeCloud IQ Controller. The default is 5 samples for the 5 GHz radios and 10 samples for the 2.4 and 6 GHz radios when you select a Medium Sensitivity setting.



#### Note

Calculate how long it takes each Smart RF managed radio to report to the elected RF Domain Manager by using the following formula:

$\text{FREQUENCY} \times \text{SAMPLE-COUNT} \times \text{NUM-CHANNELS}$

For example, a 2.4 GHz radio will take 180 seconds ( $6 \times 10 \times 3 = 180$ ).

### Power Save Aware Scanning

The Power Save Aware Scanning parameter allows Smart RF managed radios to detect wireless clients in power-save mode and take them into consideration when performing off-channel scans. By default, each Smart RF managed radio is set to **Dynamic**, and each radio will consider wireless clients in a Power Save (PS) state and may postpone the off-channel scan until the wireless client awakens at the DTIM interval. If set to **Strict**, the Smart RF-managed radios do not perform an off-channel scan when a wireless client in Power Save state is detected.

This parameter may be set to **Strict** in an environment where off-channel scanning may interfere with the DTIM and clients waking to receive data. For example, warehouse environments related to logistics and shipping where there may be hundreds of hand-held devices scanning thousands of packages in a given shift. These clients alternate between power-save mode and awake mode constantly; therefore, it would be beneficial to set the Power Save Aware Scanning mode to **Strict**.

### Voice Aware Scanning

As with Power Save Aware Scanning, Voice Aware Scanning allows Smart RF managed radios to delay off-channel scanning when Voice clients are present on the network. In a mixed client environment, the default setting of **Dynamic** is sufficient. However, if a Wireless LAN is dedicated to Voice, set Voice Aware Scanning to **Strict**.

## Edit RF Management Policy

Name: Default Smart RF

BASIC CHANNEL AND POWER **SCANNING** RECOVERY SELECT SHUTDOWN

OCS Monitoring Awareness Override ☐ Number of Threshold awareness hits: 120

Radio	5 GHz	2.4 GHz	6 GHz
Scan Duration [Milliseconds]	50	60	50
Scan Period [Seconds]	6	6	6
Extended Scan Frequency	5	5	5
Scan Sample Count	5	10	10
Client Aware Scanning	<input checked="" type="checkbox"/> 1	<input checked="" type="checkbox"/> 1	<input type="checkbox"/> 1
Power Save Aware Scanning	Dynamic ▼	Dynamic ▼	Dynamic ▼
Voice Aware Scanning	Dynamic ▼	Dynamic ▼	Dynamic ▼
Transmit Load Aware Scanning [%]	<input type="checkbox"/> 1	<input type="checkbox"/> 1	<input type="checkbox"/> 1

Figure 9: RF Management Scanning tab

Related Topics

[Basic Configuration](#) on page 14

## Recovery

The **Recovery** screen in the Smart RF Policy includes the following configuration sections:

- **Neighbor Recovery** – Determines the hold-time, thresholds, and sampling values for the Neighbor Recovery feature.
- **Interference Recovery** – Determines the noise factor, thresholds, hold-times, and deltas for the Interference Recovery feature.
- **Coverage Hole Recovery** – Determines the thresholds and intervals for the Coverage Hole Recovery feature.

## Edit RF Management Policy

Name		Default Smart RF
BASIC	CHANNEL AND POWER	SCANNING
RECOVERY		SELECT SHUTDOWN
NEIGHBOR RECOVERY		INTERFERENCE RECOVERY
Hold Time		
Power Hold Time	0	Seconds
Neighbor Recovery		
2.4 GHz Neighbor Power Threshold	-70	dBm
5 GHz Neighbor Power Threshold	-70	dBm
6 GHz Neighbor Power Threshold	-70	dBm
Dynamic Sample Recovery		
Dynamic Sample Enabled	<input checked="" type="checkbox"/>	
Dynamic Sample Retries	3	
Dynamic Sample Threshold	5	

**Figure 10: Neighbor Recovery settings**

### Hold Time

The **Power Hold Time** parameter determines the time in seconds that a Smart RF- managed radio waits between two power changes. By default, the Power Hold Time parameter value is set to **0** (disabled) when the Sensitivity is set to **Medium** on the **Basic Configuration** screen. The value can be modified when the Sensitivity is set to **Custom** on the **Basic Configuration** screen.

### Neighbor Recovery

The **Neighbor Power Threshold** parameters determine the maximum power increase threshold used by each Smart RF managed radio if the radio is required to increase its power to compensate for a failed neighbor. By default, the Neighbor Thresholds for both 2.4 GHz and 5 GHz radios is set to -70 dBm when the Sensitivity is set to **Medium** in the **Basic Configuration** screen. These values can be modified when the Sensitivity is set to **Custom**.

Optimal radio power settings are derived by determining the attenuation of all Smart RF neighbors for a given radio. A Smart RF probe is transmitted by each Smart RF-managed radio, and then the RSSI (Received Signal Strength Indicator) of each neighbor response is sent to ExtremeCloud IQ Controller. Based on Off-Channel Scanning (OCS) Sample Count in the **Scanning and Configuration** screen, an average RSSI for each neighbor is determined from the overall attenuation of the

neighbors. The attenuation plus power threshold is the power setting. If a neighbor attenuation is calculated at 80, and the threshold is set to -70, the radio power will be set to 10 ( $80 + (-70) = 10$ ).

In environments that have excessive obstructions where neighboring radios may not be heard as well, the Power Threshold may be lowered (example -65) in order to arrive at a better overall power setting.

### Dynamic Sample Recovery

The **Dynamic Sampling Recovery** parameter enables an administrator to define how Smart RF adjustments are triggered by locking retry and threshold values. This parameter is disabled by default. Select **Dynamic Sample Enabled** to enable this setting.

When Dynamic Sampling is enabled, the Smart RF managed radios perform extra sampling to avoid excessive power changes. The Smart RF-managed radios keep track of the number of samples that were processed without a power change. If a power change has not occurred in a while and the Dynamic Sample Threshold has been exceeded, the Smart RF Managed radio can perform a power change immediately. If a power change has occurred recently and another power change is required (within the Dynamic Sample Threshold), the Smart RF-managed radio sends additional samples to see if the power change is still required. The power is changed only after confirming that it is required. Configure the number of retries in the **Dynamic Sample Retries** field.

### Interference Recovery

The Interference Recovery feature performs channel changes when noise from neighboring wireless devices or outside interference is detected and the delta between the current channel energy and the perceived energy from other signals falls below a threshold. The **Channel Hold Time**, **Client Threshold**, and **Channel Switch Delta** parameters are automatically assigned the optimum values based on the Sensitivity value selected in the **Basic Configuration** screen. These values can also be modified when setting the Sensitivity value to **Custom**.

The following provides a detailed overview of each Interference Recovery parameter, which can be defined for all Smart RF managed radios.

Edit RF Management Policy

Name

Default Smart RF

BASIC

CHANNEL AND POWER

SCANNING

RECOVERY

SELECT SHUTDOWN

NEIGHBOR RECOVERY

INTERFERENCE RECOVERY

Noise

☒

Noise Factor

1.5

Channel Hold Time

1800

Seconds

Client Threshold

50

2.4 GHz Channel Switch Delta

20

dBm

5 GHz Channel Switch Delta

20

dBm

6 GHz Channel Switch Delta

20

dBm

Figure 11: Interference Recovery tab

Channel Hold Time

The minimum amount of time between two channel changes due to interference on a Smart RF managed radio. The default is 30 minutes when you select a Medium Sensitivity setting.

Client Threshold

The number of wireless clients that a Smart RF managed radio will not perform a channel change due to interference. The default value is 50 clients when you select a Medium Sensitivity setting.

Channel Switch Delta (2.4 GHz, 5 GHz, 6 GHz)

The minimum expected between the perceived energy on the radio's current channel compared to the best possible alternate channel. The default is 20 when you select a Medium Sensitivity setting.

Coverage Hole Recovery

The Coverage Hole feature performs power changes when wireless device connectivity falls below a defined SNR threshold. The **Client Threshold**, **SNR Threshold**, **Coverage Interval**, and **Interval** parameters are automatically assigned the optimum values based on the Sensitivity value selected in the **Basic Configuration** screen. These values can also be modified when setting the Sensitivity value to **Custom**.

Figure 12 provides a detailed overview of each important Coverage Hole Recovery parameter, which can be defined for all Smart RF managed radios:

<i><b>Parameter</b></i>	<i><b>Description</b></i>
<b><i>Client Threshold</i></b>	<p>Defines the number of wireless clients detected that fall below the SNR threshold before recovery takes place. The default is 1 client when a Medium Sensitivity is selected.</p> <p>This setting can be modified as it may not be desirable to adjust power every time a single wireless client falls before the defined SNR threshold.</p>
<b><i>SNR Threshold</i></b>	<p>Defines the minimum signal-to-noise ratio heard from the wireless client before recovery takes place. The default is 20 dB when a Medium Sensitivity is selected.</p> <p>As a best practice is it never recommended to set the SNR below 20 dB. When wireless clients are detected below the defined SNR, recovery will take place.</p>
<b><i>Coverage Interval</i></b>	<p>Defines the interval coverage hole recovery should be initiated by a Smart RF managed radio when a coverage hole is detected. The default is 10 seconds when a Medium Sensitivity is selected.</p> <p>When a coverage hole has been detected and recovery is taking place, the detection becomes more aggressive in determining if the coverage hole still exists.</p>
<b><i>Interval</i></b>	<p>Defines the interval in which coverage hole detection takes place by a Smart RF managed radio. The default is 30 seconds when a Medium Sensitivity is selected.</p> <p>Note that this interval may need to be lowered in environments such as warehouses where coverage is critical (i.e. low cell count, large cell size).</p>

**Figure 12: Coverage Hole Recovery parameters**

Related Topics

[Basic Configuration](#) on page 14

## Select Shutdown

The **Select Shutdown** feature is used to reduce the Co-Channel Interference (CCI) on 2.4 GHz radios in deployments that were designed for 5 GHz. Such deployments are too dense for the number of 2.4 GHz radios. Therefore, radios can be safely shut down to reduce the CCI. The CCI High/Low thresholds, Frequency, and Frequency Limiter are set to optimum values based on the Sensitivity value selected in the **Basic Configuration** screen. This feature is disabled by default.

## Edit RF Management Policy

Default Smart RF

---

BASIC    CHANNEL AND POWER    SCANNING    RECOVERY    **SELECT SHUTDOWN**

---

Enable ☐

CCI High Threshold  dBm

CCI Low Threshold  dBm

Frequency  minutes

Frequency Limiter  multiples

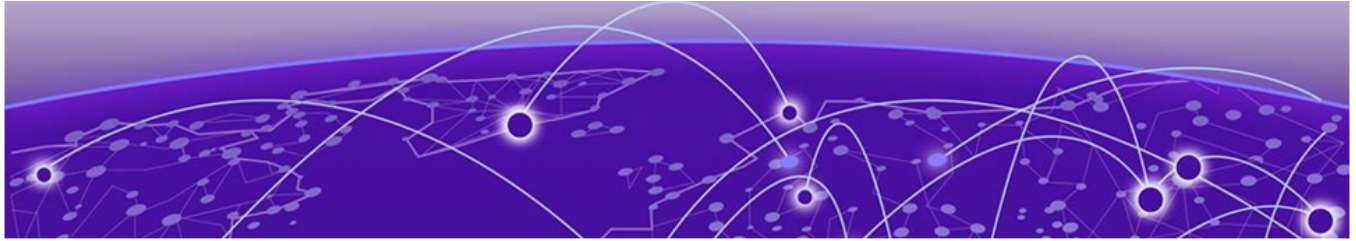
Figure 13: Select Shutdown settings

Parameter	Description
Enable	Enables/Disables the Select Shutdown algorithm
CCI High Threshold	Threshold that determines when the Select Shutdown algorithm will start to hide 2.4 GHz radios
CCI Low Threshold	Threshold that determines when the Select Shutdown algorithm will start to unhide 2.4 GHz radios
Frequency	How often the Select Shutdown algorithm runs
Frequency Limiter	Limits the Frequency value, preventing the Frequency value from becoming too fast compared to the OCS Frequency.

Figure 14: Select Shutdown parameters

Related Topics

[Basic Configuration](#) on page 14



## RF Domain

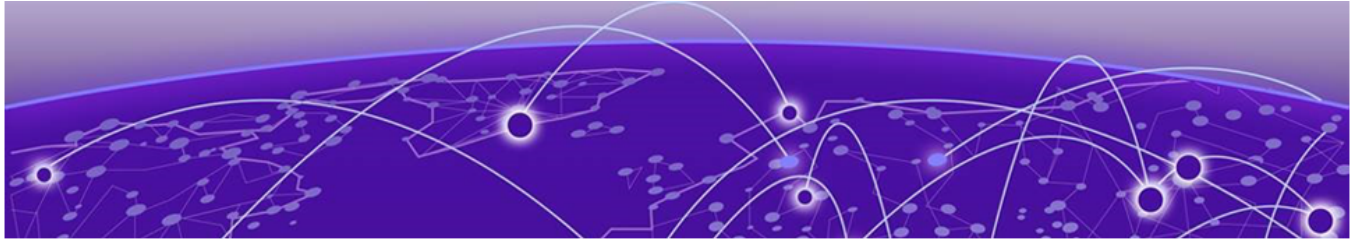
Smart RF Policies are assigned to radios at the device group level. Each device group is configured with one Smart RF Policy. Use the ExtremeCloud IQ Controller user interface to assign a Smart RF Policy to a device group:

1. Go to **Configure > Sites > Device Groups**.
2. Select a device group or select **Add**.
3. Select **RF Management**.

### Edit Device Group

Name	AP510		
Profile	AP510-default ▼	⊕	✎
RF Management	Policy Name ▼	⊕	✎

Figure 15: RF Management on Device Group tab



# Verification and Troubleshooting

---

[Channel and Power Assignments](#) on page 28

[Smart RF Widgets Per Device](#) on page 29

[Channel Inspector Report — Smart RF](#) on page 30

[Neighbor List](#) on page 31

[Energy Graphs](#) on page 32

[Smart RF History](#) on page 33

Smart RF charts are available in ExtremeCloud IQ Controller to help verify successful Smart RF functionality and to assist in troubleshooting.

1. Go to **Monitor** > **Devices** > **Access Points**.
2. Select an AP, and then select the **Smart RF** tab.

## Related Topics

[Channel and Power Assignments](#) on page 28

[Neighbor List](#) on page 31

[Energy Graphs](#) on page 32

[Smart RF History](#) on page 33

## Channel and Power Assignments

---

You can view Channel and power values for Smart RF managed radios per site in real-time from the ExtremeCloud IQ Controller user interface.

1. Go to **Monitor** > **Devices** > **Access Points**.
2. Select an AP, and then select the **Smart RF** tab.

By default, each radio is configured to be Smart RF managed and counts toward the Smart RF totals. All radios that are not managed by Smart RF are either ACS (for legacy ExtremeWireless APs) or STATIC RF for statically configured channel and power.

## Channel and Power Distribution

Channel distribution for Smart RF-managed radios can be viewed in real-time per site using the ExtremeCloud IQ Controller user interface. The channel distribution statistics are useful for ensuring that the channels are evenly distributed throughout the site. However, depending on the number of APs and the RF environment (interference or noise), equal distribution is not always possible.

## Smart RF Widgets Per Device

The following widget reports for each radio are available from the AP **Smart RF** tab:



### Note

The Smart RF tools reflect data available for channels that are selected in the Channel Plan when Smart RF is enabled on the radio. For more information, see [Channel and Power Assignments](#) on page 28.

- **Mitigation.** Mitigation action taken by Smart RF to improve the network:
  - Channel Change — The channel of an AP radio was changed
  - Power Change — The power of an AP radio was changed
  - Select Shutdown — AP radio shutdown
  - Coverage Hole — AP reacts to holes in AP coverage
- **Channel Energy.** Displays the amount of interference detected by each radio on each channel and indicates the source of the interference:
  - Neighbor Wi-Fi for APs
  - External Wi-Fi for non-neighbor sources of Wi-Fi interference
  - Non Wi-Fi Energy for interference that is not generated by a Wi-Fi signal
- **Channel Ranking.** Provides a high level of visibility as to the occupancy of the RF spectrum around a particular AP. The following data is provided on the widget:
  - Frequency. Radio Frequency channels with the beacon channel (primary) denoted with brackets. The following is an 80MHz channel example showing [5220] as the beacon channel. 44: (5180 5200 [5220] 5240).
  - Noise. Channel noise measured in Decibel-milliwatts (dBm).
  - Ranking. Indicates the best operating channel based on a 5-star ranking. This ranking is relative to the channels that are available. The higher the rank the more desirable the channel. The ranking algorithm considers the following parameters:
    - noise level
    - overlap count
    - co-channel count
    - adjacent AP count
  - Overlap. Number of APs on overlapping channels. Applicable for 40MGz and 80MGz channels only. The 20MGz channel is designated as the primary and the other channels are designated as extension channels (secondary). If the primary channel of one AP is the same as the extension channel of another AP it is considered overlapping. Overlapping is the worst type of interference.
  - Co-Channel. Number of co-channel APs. APs on the same channel as the target AP are competing. Using Distributed Control Function (DCF) collisions are avoided because the APs know to avoid each other; however, the more traffic on the channel the greater the chance of collisions. Throughput slows but all packets get through.
  - Adjacent. Number of APs on adjacent channels. Adjacent APs are close enough to interfere, but not close enough to know they are interfering. They do not have the benefit of DCF.

To display more details for a specific channel, select a row in the widget. The Channel Inspector Interference Report displays.

- **Neighbor List.** Indicates channel occupancy and neighboring channels.
  - Neighbor APs are identified by both the SSID and BSSID.
  - The channel width for each neighbor AP is displayed, and it is an option to display the AP security setting.
  - APs that are managed by ExtremeCloud IQ Controller are reported separately from APs that are not managed by ExtremeCloud IQ Controller.
  - The Neighbor Report can be sorted by radio band — 2.4 GHz, 5 GHz, and 6 GHz respectively.

#### Related Topics

[Basic Configuration](#) on page 14

[Channel and Power](#) on page 16

[Scanning Configuration](#) on page 19

---

## Channel Inspector Report — Smart RF

---

The Channel Inspector Report enhances Smart RF on the controller by providing details about channel interference for each radio.

To access the Channel Inspector Report for Smart RF:

1. Go to **Monitor > Sites**.
2. Select a site. Then select the **Smart RF** tab.
3. From the **AP Smart RF** dashboard, select a row on the **Channel Ranking** widget.

The channel data generated from Smart RF populates the report. The report is generated from the last channel scan. The report lists visible BSSID and SSID data with RF measurements.



#### Note

For more information, see:

- [Basic Configuration](#) on page 14
- [Scanning Configuration](#) on page 19

- [Channel and Power](#) on page 16

**Table 5: Channel Inspector Interference Report**

Field	Description
Interference Type	<p>Describes the channel interference in relation to the operating channel. Possible values are:</p> <ul style="list-style-type: none"> <li>• Co-Channel. All the APs on the same channel as the target AP are competing. Using Distributed Control Function (DCF) collisions are avoided because the APs know to avoid each other; however, the more traffic on the channel the greater the chance of collisions. Throughput slows but all packets get through.</li> </ul> <p>Example Notation, Co-Channel 20 44: (5220) indicates that there is co-channel interference on the beacon channel 5220.</p> <ul style="list-style-type: none"> <li>• Adjacent. APs on adjacent channels are close enough to interfere but not close enough to know they are interfering. They do not have the benefit of DCF.</li> <li>• Overlapping. Applicable for 40MGz and 80MGz channels only. The 20MGz channel is designated as the primary and the other channels are designated as secondary extension channels. If the primary channel of one AP is the same as the extension channel of another AP it is considered overlapping. Overlapping is the worst type of interference.</li> </ul>
Frequency	Radio Frequency channels with the beacon channel (primary) denoted with brackets. The following is an 80 MHz channel example showing [5220] as the beacon channel. 44: (5180 5200 [5220] 5240).
RSS	Received Signal Strength value.
BSSID	Basic Service Set Identifier. Identifies the AP.
SSID	Service Set Identifier. Identifies the network to which the station is associated.
AP Name	Name of the AP provided at network setup.

#### Related Topics

[Smart RF Widgets Per Device](#) on page 29

[Basic Configuration](#) on page 14

[Channel and Power](#) on page 16

[Scanning Configuration](#) on page 19

## Neighbor List

A list of Neighbor and Interfering access points can be view per AP in real-time using the ExtremeCloud IQ Controller user interface:

1. Go to **Monitor > Devices > Access Points**.
2. Select an AP, and then select the **Smart RF** tab.

Each Smart RF managed radio captures the MAC address, Channel, and RSSI of each neighbor or interfering wireless AP that the selected AP sees. The Neighbor List can be useful when trying to resolve RF issues. The following information is available:

- Name
- BSSID (MAC)
- SSID
- Type
- Radio Index
- Last Seen
- Power (dBm)
- Attenuation (dB)
- Channel
- Channel Width (MHz)

### Neighbor List

Name	BSSID(MAC)	SSID	Type	Radio Index	Last Seen
	00:D7:8F:B4:7C:91		External	0	1586462494
	D8:84:66:84:FD:D0		External	1	1586462494
	48:9B:D5:EE:0C:72		External	1	1586462132
	48:9B:D5:ED:F2:D1		External	1	1586461650
	20:6C:8A:06:0E:E0		External	1	1586458760
	20:9E:F7:4C:FA:B3		External	1	1586462494
	00:42:68:13:AC:CE		External	1	1586461650
	5C:0E:8C:FF:10:D0		External	1	1586459723
	00:6B:F1:68:12:40		External	0	1586462494

Figure 16: Neighbor List

## Energy Graphs

Each Smart RF managed radio maintains an energy graph, which is used for channel and power assignments as well as for Interference Recovery. The energy graph can be displayed per Smart RF managed radio using the ExtremeCloud IQ Controller user interface.

1. Go to **Monitor > Devices > Access Points**.
2. Select an AP, and then select the **Smart RF** tab.

Each radio energy graph displays the External Noise, Neighbor Noise, and Total energy for each channel.

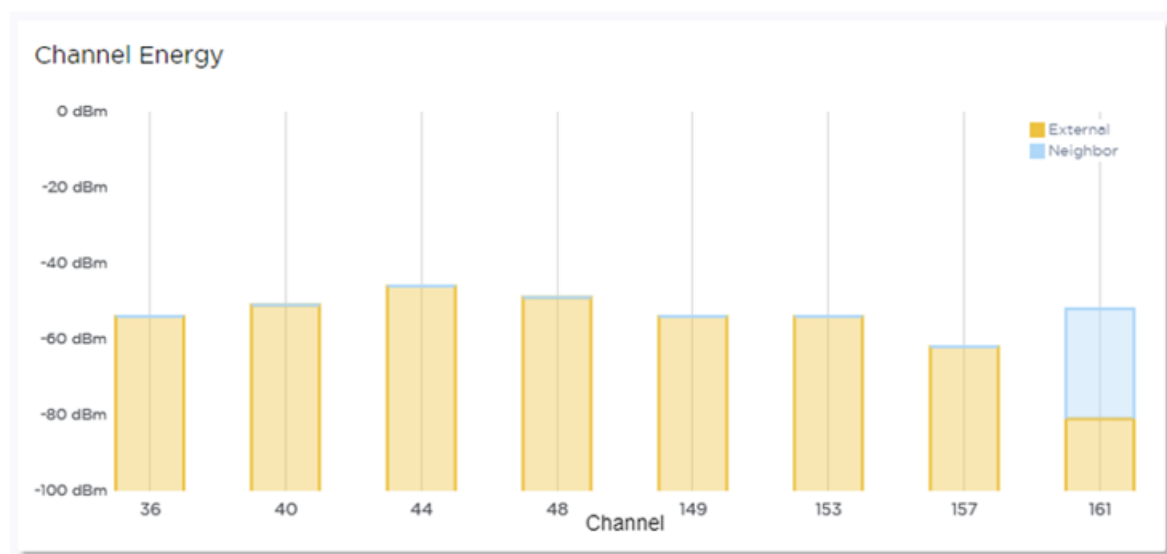


Figure 17: Channel Energy Graph per AP

## Smart RF History

ExtremeCloud IQ Controller maintains a history of all Smart RF events that can be displayed in real-time using the ExtremeCloud IQ Controller user interface. Go to **Tools > Logs > AP Logs**.

The Smart RF History includes all Smart RF related events including:

- radios being added
- channel and power changes
- Neighbor Recovery, Interference Recovery, and Coverage Hole Recovery events.

View these events from the **AP Logs** tab.

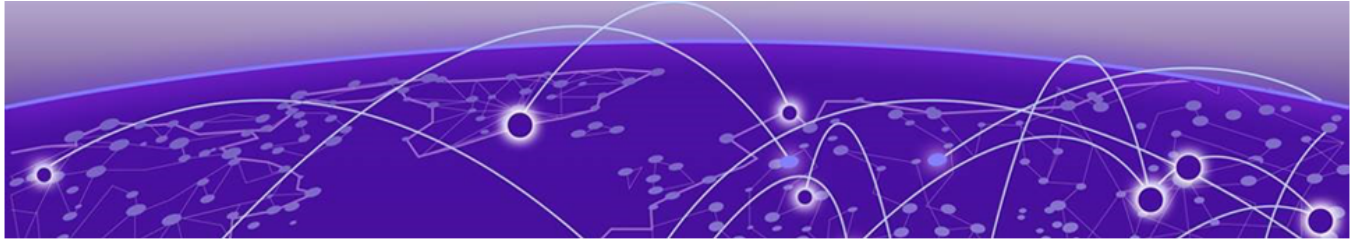
Search  ☐ Exact match

Filter logs From: past month  To: latest

EVENTS STATION EVENTS AUDIT AP LOGS

	Time	AP Name	Type	Message
	Apr 1, 2020 1:14:50 PM	AP1 - Rev AA	Info	Smart RF Radio 1 power changed from 12dBm to 17dBm
	Apr 1, 2020 1:14:50 PM	AP1 - Rev AA	Info	Smart RF IR Radio 1 channel changed from 11 to 6
	Apr 1, 2020 12:56:08 PM	AP1 - Rev AA	Info	Smart RF IR Radio 2 channel changed from 52 to 116
	Apr 1, 2020 12:49:02 PM	AP1 - Rev AA	Info	Smart RF Radio 1 power changed from 14dBm to 12dBm
	Apr 1, 2020 12:49:02 PM	AP1 - Rev AA	Info	Smart RF IR Radio 1 channel changed from 6 to 11
	Apr 1, 2020 12:48:02 PM	AP1 - Rev AA	Info	Smart RF IR Radio 2 channel changed from 116 to 52
	Apr 1, 2020 12:36:08 PM	AP1 - Rev AA	Info	Smart RF Radio 1 power changed from 14dBm to 17dBm
	Apr 1, 2020 12:36:08 PM	AP1 - Rev AA	Info	Smart RF IR Radio 1 channel changed from 1 to 6
	Apr 1, 2020 12:35:40 PM	AP1 - Rev AA	Info	Smart RF Radio 1 power changed from 15dBm to 14dBm
	Apr 1, 2020 12:35:40 PM	AP1 - Rev AA	Info	Smart RF IR Radio 1 channel changed from 6 to 1
	Apr 1, 2020 12:29:40 PM	AP1 - Rev AA	Info	Smart RF Radio 1 power changed from 12dBm to 17dBm
	Apr 1, 2020 12:29:40 PM	AP1 - Rev AA	Info	Smart RF IR Radio 1 channel changed from 11 to 6
	Apr 1, 2020 12:29:18 PM	AP1 - Rev AA	Info	Smart RF IR Radio 2 channel changed from 52 to 116
	Apr 1, 2020 12:23:42 PM	AP1 - Rev AA	Info	Smart RF Radio 1 power changed from 14dBm to 12dBm
	Apr 1, 2020 12:23:42 PM	AP1 - Rev AA	Info	Smart RF IR Radio 1 channel changed from 6 to 11
	Apr 1, 2020 12:14:08 PM	AP1 - Rev AA	Info	Smart RF IR Radio 2 channel changed from 116 to 52
	Apr 1, 2020 12:13:34 PM	AP1 - Rev AA	Info	Smart RF Radio 1 power changed from 12dBm to 17dBm
	Apr 1, 2020 12:13:34 PM	AP1 - Rev AA	Info	Smart RF IR Radio 1 channel changed from 11 to 6
	Apr 1, 2020 12:00:12 PM	AP1 - Rev AA	Info	Smart RF Radio 1 power changed from 14dBm to 12dBm

Figure 18: Smart RF History from AP Logs



# Index

---

## A

announcements 6

## B

Basic settings 14

## C

Channel and Power assignments 28

Channel and Power Distribution 28

channel and power selection 9

Channel and Power settings

channel width 18

Channel Inspector Report for Smart RF 30

conventions

notice icons 4

text 4

Coverage Hole Recovery 12

## D

documentation

feedback 6

location 5

## E

Energy Graphs 32

## F

feedback 6

## I

Interference Recovery 11

## N

Neighbor List 31

Neighbor Recovery 11

notices 4

## O

OCS Off-Channel Scanning 8

Off-Channel Scanning 8

## P

product announcements 6

## R

recovery features 10

Recovery settings 21

RF Domain 27

RF Management

Smart RF widgets 29

## S

Scanning Configuration 19

Select Shutdown settings 25

self-healing RF environment 10

Smart RF 8

Smart RF History 33

Smart RF Policy

Basic settings 14

Channel and Power settings 16

Recovery settings 21

Scanning Configuration 19

Select Shutdown settings 25

Smart RF widgets

Channel Inspector Report 30

support, see technical support

## T

technical support

contacting 6

## V

verification and troubleshooting Smart RF 28

## W

warnings 4

widgets

Smart RF 29