



ExtremeCloud IQ Controller License Migration Guide

Version 10.02.01

9037514-00 Rev AA
June 2022



Copyright © 2022 Extreme Networks, Inc. All rights reserved.

Legal Notice

Extreme Networks, Inc. reserves the right to make changes in specifications and other information contained in this document and its website without prior notice. The reader should in all cases consult representatives of Extreme Networks to determine whether any such changes have been made.

The hardware, firmware, software or any specifications described or referred to in this document are subject to change without notice.

Trademarks

Extreme Networks and the Extreme Networks logo are trademarks or registered trademarks of Extreme Networks, Inc. in the United States and/or other countries.

All other names (including any product names) mentioned in this document are the property of their respective owners and may be trademarks or registered trademarks of their respective companies/owners.

For additional information on Extreme Networks trademarks, see: www.extremenetworks.com/company/legal/trademarks

Open Source Declarations

Some software files have been licensed under certain open source or third-party licenses. End-user license agreements and open source declarations can be found at: <https://www.extremenetworks.com/support/policies/open-source-declaration/>



Table of Contents

Preface.....	4
Text Conventions.....	4
Documentation and Training.....	5
Help and Support.....	6
Subscribe to Product Announcements.....	6
Send Feedback.....	6
ExtremeCloud IQ Controller License Modes.....	8
Upgrade ExtremeCloud IQ Controller Contracts.....	9
Method 1: Search for Contracts.....	10
Method 2: Available Contract List.....	11
Generate Activation Package.....	13
Generate Air Gap File.....	15



Preface

Read the following topics to learn about:

- The meanings of text formats used in this document.
- Where you can find additional information and help.
- How to reach us with questions and comments.

Text Conventions

Unless otherwise noted, information in this document applies to all supported environments for the products in question. Exceptions, like command keywords associated with a specific software version, are identified in the text.

When a feature, function, or operation pertains to a specific hardware product, the product name is used. When features, functions, and operations are the same across an entire product family, such as ExtremeSwitching switches or SLX routers, the product is referred to as *the switch* or *the router*.

Table 1: Notes and warnings






Icon	Notice type	Alerts you to...
	Tip	Helpful tips and notices for using the product
	Note	Useful information or instructions
	Important	Important features or instructions
	Caution	Risk of personal injury, system damage, or loss of data
	Warning	Risk of severe personal injury

Table 2: Text

Convention	Description
screen displays	This typeface indicates command syntax, or represents information as it is displayed on the screen.
The words <i>enter</i> and <i>type</i>	When you see the word <i>enter</i> in this guide, you must type something, and then press the Return or Enter key. Do not press the Return or Enter key when an instruction simply says <i>type</i> .
Key names	Key names are written in boldface, for example Ctrl or Esc . If you must press two or more keys simultaneously, the key names are linked with a plus sign (+). Example: Press Ctrl+Alt+Del
<i>Words in italicized type</i>	Italics emphasize a point or denote new terms at the place where they are defined in the text. Italics are also used when referring to publication titles.
NEW!	New information. In a PDF, this is searchable text.

Table 3: Command syntax

Convention	Description
bold text	Bold text indicates command names, keywords, and command options.
<i>italic</i> text	Italic text indicates variable content.
[]	Syntax components displayed within square brackets are optional. Default responses to system prompts are enclosed in square brackets.
{ x y z }	A choice of required parameters is enclosed in curly brackets separated by vertical bars. You must select one of the options.
x y	A vertical bar separates mutually exclusive elements.
< >	Nonprinting characters, such as passwords, are enclosed in angle brackets.
...	Repeat the previous element, for example, <i>member</i> [<i>member</i> ...].
\	In command examples, the backslash indicates a “soft” line break. When a backslash separates two lines of a command input, enter the entire command at the prompt without the backslash.

Documentation and Training

Find Extreme Networks product information at the following locations:

[Current Product Documentation](#)

[Release Notes](#)

[Hardware and software compatibility](#) for Extreme Networks products

[Extreme Optics Compatibility](#)

[Other resources](#) such as white papers, data sheets, and case studies

Extreme Networks offers product training courses, both online and in person, as well as specialized certifications. For details, visit www.extremenetworks.com/education/.

Help and Support

If you require assistance, contact Extreme Networks using one of the following methods:

Extreme Portal

Search the GTAC (Global Technical Assistance Center) knowledge base; manage support cases and service contracts; download software; and obtain product licensing, training, and certifications.

The Hub

A forum for Extreme Networks customers to connect with one another, answer questions, and share ideas and feedback. This community is monitored by Extreme Networks employees, but is not intended to replace specific guidance from GTAC.

Call GTAC

For immediate support: (800) 998 2408 (toll-free in U.S. and Canada) or 1 (408) 579 2826. For the support phone number in your country, visit: www.extremenetworks.com/support/contact

Before contacting Extreme Networks for technical support, have the following information ready:

- Your Extreme Networks service contract number, or serial numbers for all involved Extreme Networks products
- A description of the failure
- A description of any actions already taken to resolve the problem
- A description of your network environment (such as layout, cable type, other relevant environmental information)
- Network load at the time of trouble (if known)
- The device history (for example, if you have returned the device before, or if this is a recurring problem)
- Any related RMA (Return Material Authorization) numbers

Subscribe to Product Announcements

You can subscribe to email notifications for product and software release announcements, Field Notices, and Vulnerability Notices.

1. Go to [The Hub](#).
2. In the list of categories, expand the **Product Announcements** list.
3. Select a product for which you would like to receive notifications.
4. Select **Subscribe**.
5. To select additional products, return to the **Product Announcements** list and repeat steps 3 and 4.

You can modify your product selections or unsubscribe at any time.

Send Feedback

The Information Development team at Extreme Networks has made every effort to ensure that this document is accurate, complete, and easy to use. We strive to improve our documentation to help you in your work, so we want to hear from you. We welcome all feedback, but we especially want to know about:

- Content errors, or confusing or conflicting information.

- Improvements that would help you find relevant information.
- Broken links or usability issues.

To send feedback, do either of the following:

- Access the feedback form at <https://www.extremenetworks.com/documentation-feedback/>.
- Email us at documentation@extremenetworks.com.

Provide the publication title, part number, and as much detail as possible, including the topic heading and page number if applicable, as well as your suggestions for improvement.



NEW!

ExtremeCloud IQ Controller License Modes

ExtremeCloud IQ Controller licensing can be deployed in either connected mode or air gap mode.

In connected mode, ExtremeCloud IQ Controller offers subscription licensing that synchronizes with the ExtremeCloud IQ licensing server. The controller automatically synchronizes with the license management server every 24 hours. One license can be used for device management in both ExtremeCloud IQ and ExtremeCloud IQ Controller.

Air gap mode supports licensing for deployments that do not have continuous internet connection. In air gap mode, ExtremeCloud IQ Controller uses a license file that includes the number of entitlements explicitly listed on the file for on-premises device management. Generate the licensing file on the [Extreme Networks Support Portal](#) and install the file onto the controller.

LICENSE DETAILS	ENTITLEMENTS	ACTIVATIONS	Switch to Air-Gap Licensing
License Server Status			
Daily Scheduled Sync	09:04 AM	SYNCHRONIZE NOW	
Regulatory Domain	World Wide		
Serial Number [Locking ID]	2023E-C7442		
MAC Address	000C2949AB7B		
Activated Licenses	5		
Managed Devices			
APs	3		
Switches	2		
System Limits			
APs	50		
Switches	50		
Clients	1000		
PKI Certificates	Installed Verified		

Figure 1: Controller License Details tab offers connected mode or air gap mode

Related Topics

- [Upgrade ExtremeCloud IQ Controller Contracts](#) on page 9
- [Generate Activation Package](#) on page 13
- [Generate Air Gap File](#) on page 15



Upgrade ExtremeCloud IQ Controller Contracts

Method 1: Search for Contracts on page 10

Method 2: Available Contract List on page 11

All customers who are upgrading to ExtremeCloud IQ Controller must obtain a new Activation Key.

For customers on active subscription contracts (XCC-ORC-S-EW/PWP), we provide a workflow that automatically converts the existing contract to a new contract based on an ExtremeCloud IQ Navigator license (XIQ-NAV-S-C-EW/PWP). The contract migration workflow is provided by the [Extreme Support Portal](#).



Note

After upgrading your service contract in the [Extreme Support Portal](#), you have 7 days to deploy ExtremeCloud IQ Controller and install the Activation Package.

For subscription customers, the process of converting subscriptions to the new ExtremeCloud IQ Navigator subscription SKUs cancels the term of the previous entitlements. Controllers enabled for subscription management will reflect this state change within 24 hours, and will enter a 7-day grace period. To ensure service continuance, upgrade to ExtremeCloud IQ Controller version 10.x software within the 7-day grace period.

The migration path from Extreme Campus Controller v5.x to ExtremeCloud IQ Controller v10.x is described as follows:

- If you have a subscription license for Extreme Campus Controller v5.x, your migration path to ExtremeCloud IQ Controller v10.x subscription is automatic. This will include the ExtremeCloud IQ Navigator license under the same licensing terms.
- If you have a perpetual license to Extreme Campus Controller v5.x, with a subscription to ExtremeCloud IQ — Site Engine, the AP capacity of the controllers is included in the capacity of the Site Engine migrations, and therefore available upon upgrade.
- If you have a perpetual license to Extreme Campus Controller v5.x alone, you must contact your Extreme Networks support team to determine your new subscription capacity.

There is more than one way to navigate to the Service Contract Upgrade page: **Method 1** illustrates how to search for a contract by Adoption Key or Activation Key. **Method 2** illustrates how to display a list of your available contracts. Use either navigation path in the Support Portal.



Note

Direct customer account access: Partners may be able to see customer records but may not be able to execute workflows. License migration needs to be performed in the context of the target customer's account.

Method 1: Search for Contracts

To upgrade your contracts to ExtremeCloud IQ Controller:

1. Log into the Extreme Support Portal: <https://extremeportal.force.com/>.
2. Scroll down to **Support Activities** and select **Service Contract Upgrade**.

You have the option to search for contracts using one of the following keys:

- Adoption Key
- Activation Key

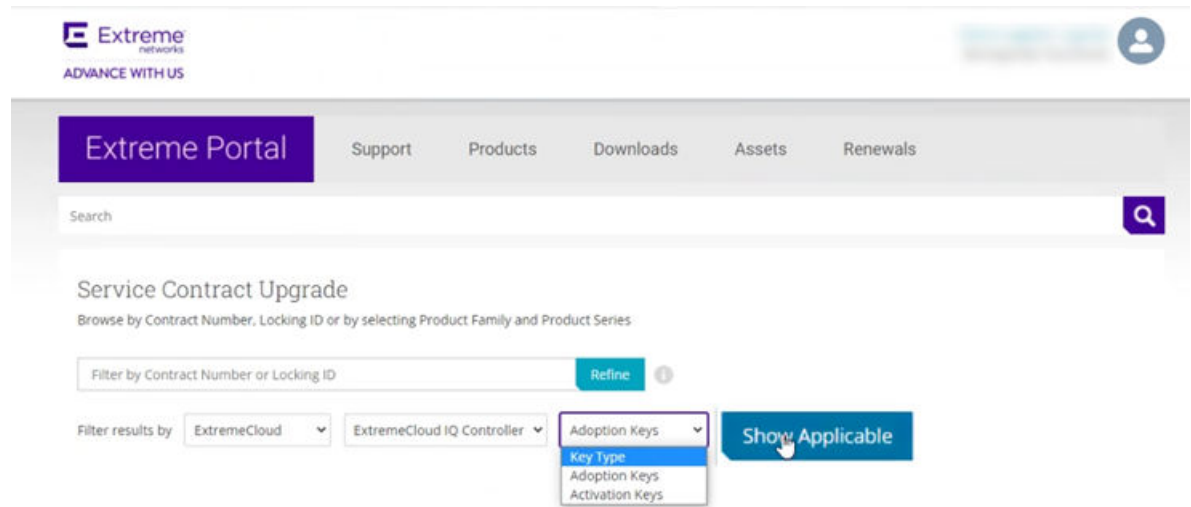


Figure 2: Searching for existing contracts to upgrade

A list of your existing contracts is displayed.

- 3. Select the check boxes next to the contracts that you want to upgrade.

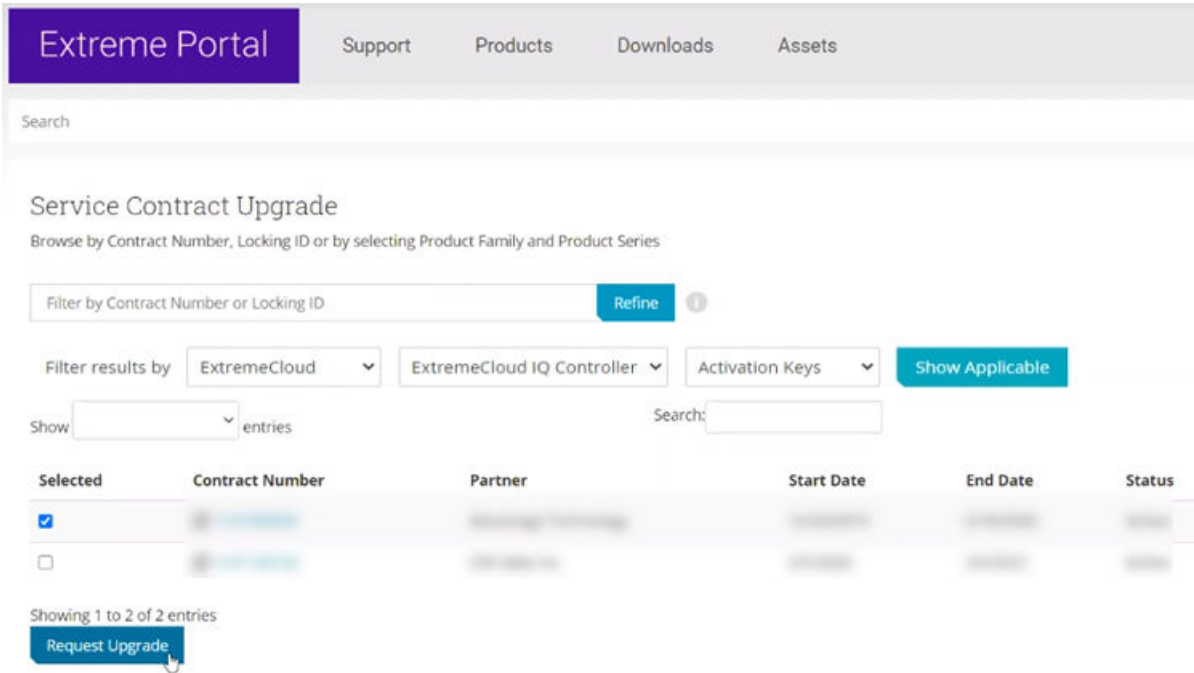


Figure 3: Request Update for Selected Contracts

- 4. Select **Request Upgrade**.
An upgrade email is sent to you indicating that the migration process to Subscription has been completed. Attached you will find a list of upgraded items.

Method 2: Available Contract List

To upgrade your contracts to ExtremeCloud IQ Controller:

- 1. Log into the Extreme Support Portal: <https://extremeportal.force.com/>.

2. Scroll down to **Support Activities** and select **Service Contracts**. Or, go to **Support > Service Contracts Home**.

A list of your contracts displays. The **Request Upgrade** button displays next to the contract that is to be upgraded.

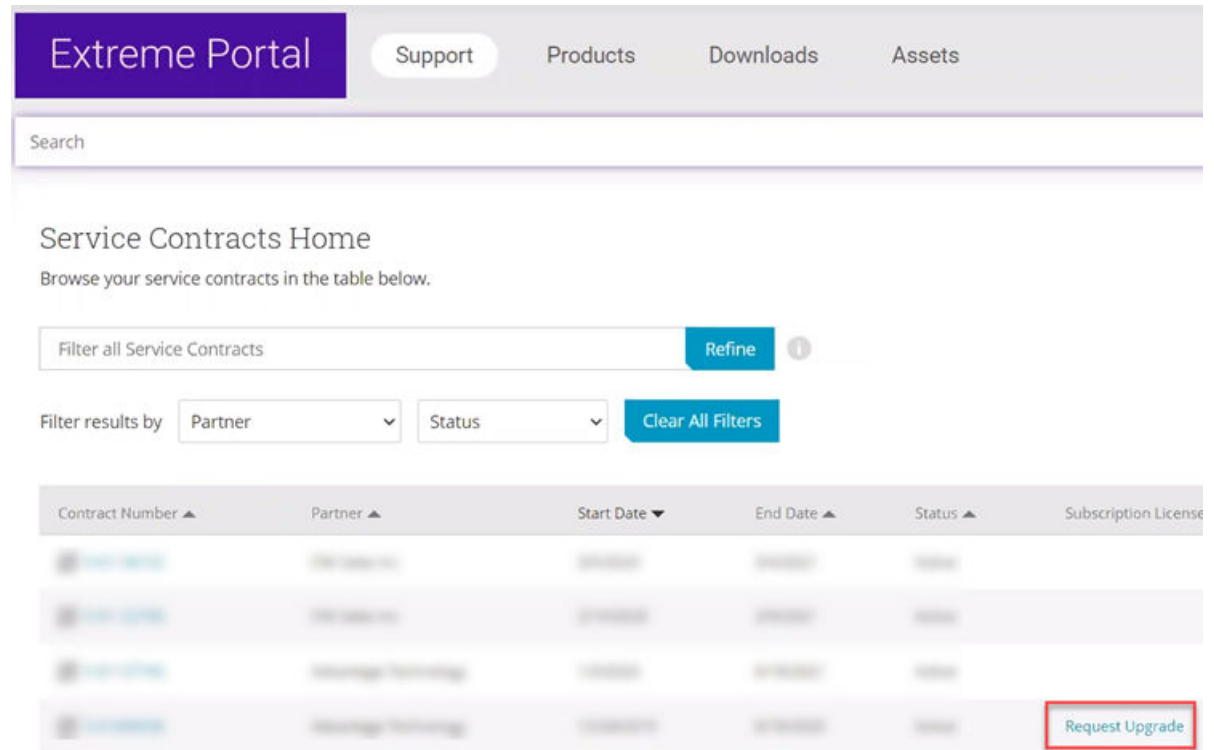


Figure 4: Contract Request Upgrade

3. To see the assets associated with the upgraded contract, select the contract link.
4. Select **Request Upgrade**.

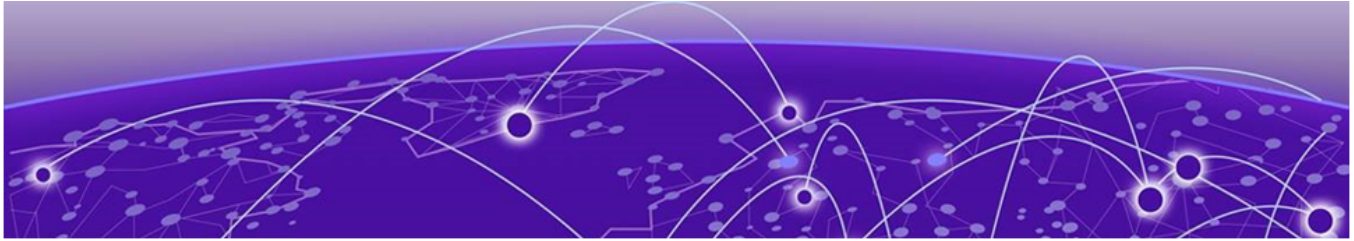
An upgrade email is sent to you indicating that the migration process has been completed. Attached, you will find a list of upgraded items.

For instructions on how to generate the Activation Package, see [Generate Activation Package](#) on page 13. The Activation Package includes your Customer Unique ID (CUID), capacity limits, and certificates for a virtual appliance. (Physical appliances include certificates pre-installed.)

For more information about product licensing and installing the Activation Package, see the [ExtremeCloud IQ Controller User Guide](#).

Related Topics

[Generate Activation Package](#) on page 13



Generate Activation Package

All customers must generate and install an Activation Package for ExtremeCloud IQ Controller. Regardless of whether you obtain a new license or upgrade to ExtremeCloud IQ Controller. Take the following steps to generate and install the Activation Package:

1. To obtain the controller Locking ID:
 - a. Log in to ExtremeCloud IQ Controller.
 - b. Go to **Administration > License > Licensed Details**.
2. Log into the [Extreme Networks Support Portal](#).
3. Go to **Assets > Licenses Home** and select the ExtremeCloud IQ Controller Voucher ID line item from the list.
4. On the **Voucher Details** page, select **Generate Activation Key**.



Note

The Locking ID is the controller Serial Number.

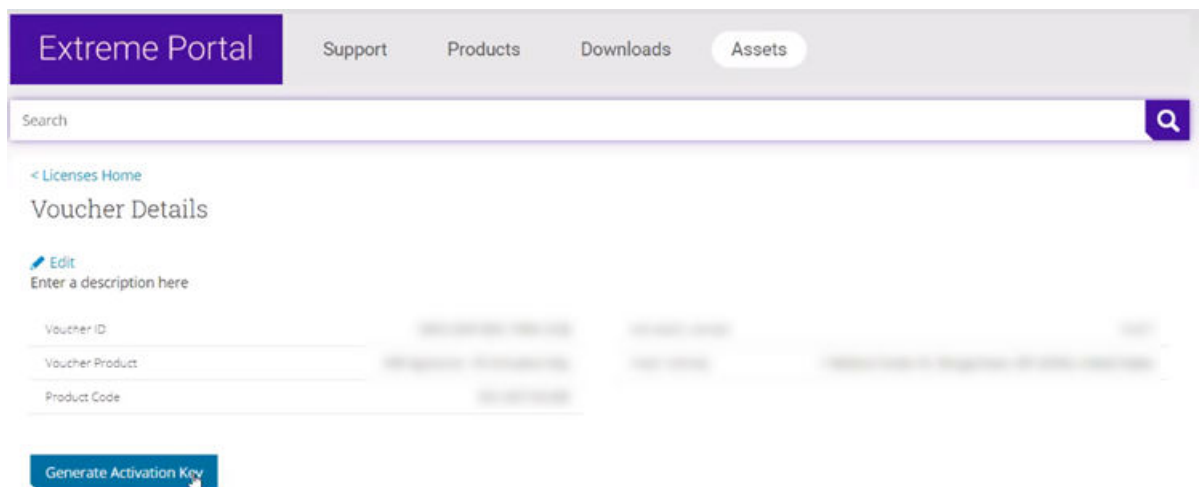


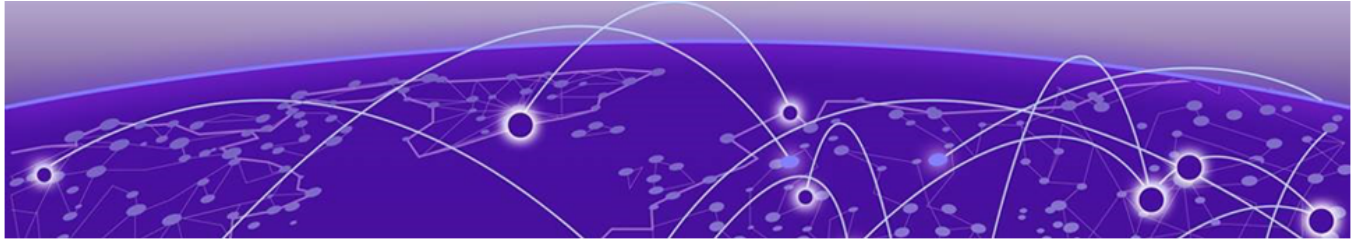
Figure 5: Generate Activation Key

5. Provide the Locking ID for the ExtremeCloud IQ Controller that will be activated.
6. Check the box to accept **Terms and Conditions** and select **Submit**.
7. The Activation Package is generated, and the **Save As** dialog displays.

8. Download the Activation Package to your local machine.

**Note**

The Activation Package *file name* includes the Locking ID for the specific ExtremeCloud IQ Controller.



NEW! Generate Air Gap File

Air gap mode supports licensing for deployments that do not have continuous internet connection. In air gap mode, ExtremeCloud IQ Controller uses a license file that includes the number of entitlements explicitly listed on the file for on-premises device management.

To generate the air gap file:

1. To obtain the controller Locking ID:
 - a. Log in to ExtremeCloud IQ Controller.
 - b. Go to **Administration > License > Licensed Details**.



Note

The Locking ID is the controller Serial Number.

2. Log into the [Extreme Networks Support Portal](#).
3. Navigate to **Assets > Cloud Licenses Home**.
4. Select **Generate License** and complete the Generate License Input Form.
5. Select **Submit**.

After the file is generated, download the file from the support portal and install it on the controller. For more information about installing the air gap file on the controller, see the [ExtremeCloud IQ Controller User Guide](#).

Related Topics

[ExtremeCloud IQ Controller License Modes](#) on page 8