



# ExtremeCloud IQ (New) v25.11.0-280 Release Notes

Enhancements, Fixes, and Supported Devices

9041149-00 Rev AA  
June 2026



Copyright © 2026 Extreme Networks, Inc. All rights reserved.

## Legal Notice

Extreme Networks, Inc. reserves the right to make changes in specifications and other information contained in this document and its website without prior notice. The reader should in all cases consult representatives of Extreme Networks to determine whether any such changes have been made.

The hardware, firmware, software or any specifications described or referred to in this document are subject to change without notice.

## Trademarks

Extreme Networks and the Extreme Networks logo are trademarks or registered trademarks of Extreme Networks, Inc. in the United States and/or other countries.

All other names (including any product names) mentioned in this document are the property of their respective owners and may be trademarks or registered trademarks of their respective companies/owners.

For additional information on Extreme Networks trademarks, see: <https://www.extremenetworks.com/about-extreme-networks/company/legal/trademarks>

## Open Source Declarations

Some software files have been licensed under certain open source or third-party licenses.

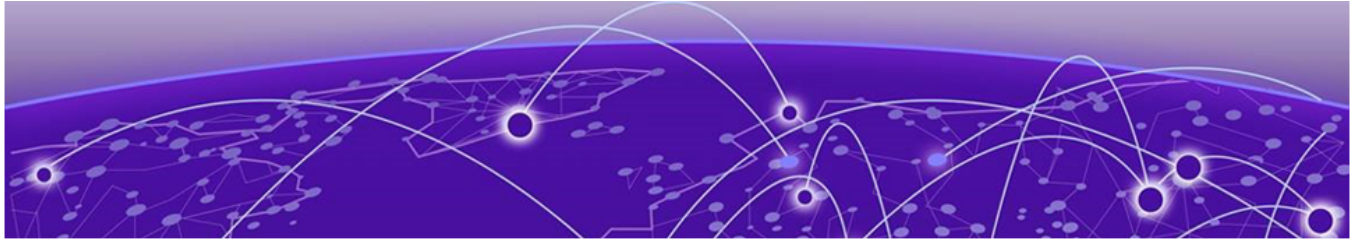
End-user license agreements and open source declarations can be found at: <https://www.extremenetworks.com/support/policies/open-source-declaration/>



# Table of Contents

---

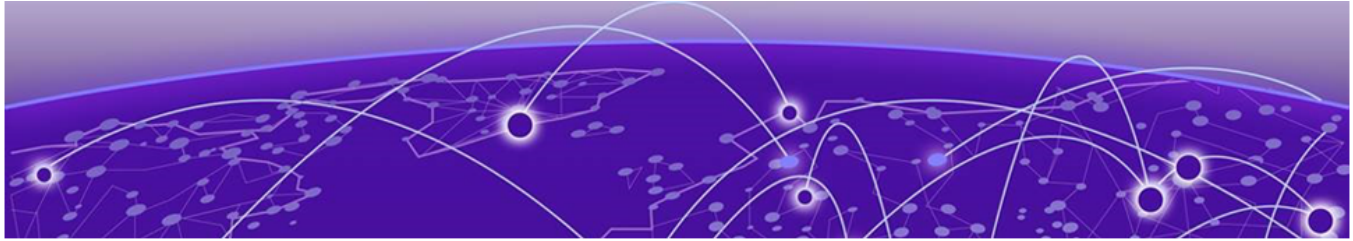
Abstract.....	iv
Help and Support.....	v
Subscribe to Product Announcements.....	v
<b>General Release Information.....</b>	<b>7</b>
Current Release: 25.11.0-280.....	7
ExtremeCloud IQ (New) Public IP Address Blocks.....	7
Supported IQ Engine Software.....	8
Browser Support and Display Settings.....	8
Desktop Browsers.....	8
Display Settings.....	9
<b>New Features.....</b>	<b>10</b>
<b>Addressed Issues.....</b>	<b>14</b>
<b>Known Issues.....</b>	<b>17</b>
<b>Device Support Information.....</b>	<b>20</b>
Universal Compute Platform.....	20
Access Points.....	20
Universal Hardware.....	21
IQ Engine (Cloud Native).....	22
Switches.....	22
Universal Hardware.....	23
ExtremeXOS.....	42
VOSS.....	46
ExtremeCloud IQ Site Engine.....	48



## Abstract

---

This release notes document for ExtremeCloud IQ (New) version 25.11.0-280 describes enhancements, supported platforms, addressed defects, and operational constraints for a cloud-managed network management solution. It outlines core functionality including centralized device onboarding, monitoring, configuration management, firmware lifecycle control, and role-based access with SSO integration across EXOS/Switch Engine, VOSS/Fabric Engine, and IQ Engine platforms. Key updates include CoPilot integration through the application switcher, manual controller onboarding, D360 device visibility, WIPS service enablement, enhanced device status filtering, and expanded OS support, along with configuration and monitoring workflows for multi-site enterprise deployments. The document provides guidance on supported hardware, firmware prerequisites, API behaviors, and topology visualization, while detailing addressed issues affecting APIs, UI navigation, client health metrics, and device provisioning, and identifying known issues such as configuration inconsistencies, SSO session handling, and upgrade limitations. Intended for intermediate to advanced administrators, it supports troubleshooting, interoperability planning, secure configuration, and performance optimization in large-scale cloud-managed environments.



# Help and Support

---

If you require assistance, contact Extreme Networks using one of the following methods:

## Extreme Portal

Search the GTAC (Global Technical Assistance Center) knowledge base; manage support cases and service contracts; download software; and obtain product licensing, training, and certifications.

## The Hub

A forum for Extreme Networks customers to connect with one another, answer questions, and share ideas and feedback. This community is monitored by Extreme Networks employees, but is not intended to replace specific guidance from GTAC.

## Call GTAC

For immediate support: (800) 998 2408 (toll-free in U.S. and Canada) or 1 (408) 579 2800. For the support phone number in your country, visit [www.extremenetworks.com/support/contact](http://www.extremenetworks.com/support/contact).

Before contacting Extreme Networks for technical support, have the following information ready:

- Your Extreme Networks service contract number, or serial numbers for all involved Extreme Networks products
- A description of the failure
- A description of any actions already taken to resolve the problem
- A description of your network environment (such as layout, cable type, other relevant environmental information)
- Network load at the time of trouble (if known)
- The device history (for example, if you have returned the device before, or if this is a recurring problem)
- Any related RMA (Return Material Authorization) numbers

## Subscribe to Product Announcements

---

You can subscribe to email notifications for product and software release announcements, Field Notices, and Vulnerability Notices.

1. Go to [The Hub](#).
2. In the list of categories, expand the **Product Announcements** list.
3. Select a product for which you would like to receive notifications.

4. Select **Subscribe**.
5. To select additional products, return to the **Product Announcements** list and repeat steps 3 and 4.

You can modify your product selections or unsubscribe at any time.



# General Release Information

---

[Browser Support and Display Settings](#) on page 8

## Current Release: 25.11.0-280

---

June 2026

This release includes CoPilot integration through the application switcher, manual controller onboarding, D360 device visibility, WIPS service enablement, enhanced device status filtering, and expanded OS support, along with configuration and monitoring workflows for multi-site enterprise deployments.

### Related Links

- [Known Issues](#) on page 17
- [Device Support Information](#) on page 20

## ExtremeCloud IQ (New) Public IP Address Blocks

---

Data Center	IP Block	Addresses and Ports
Global Data Center (GDC)	44.234.22.92/30 18.194.95.0/28 34.253.190.192/26 3.234.248.0/27	
Australia (AUS)	13.210.3.192/28 18.98.198.80/28	<a href="#">Firewall Address and Port Information</a>
Azure, Canada Central (ACA)	20.151.64.48/28	<a href="#">Firewall Address and Port Information</a>
Azure, US East (AVA)	52.226.89.112/28	<a href="#">Firewall Address and Port Information</a>
Brazil (BR)	18.228.70.16/28	<a href="#">Firewall Address and Port Information</a>
Germany (FRA)	3.67.81.96/27 18.194.95.0/28	<a href="#">Firewall Address and Port Information</a>
India (IN)	13.232.67.8/29 3.6.70.64/29	<a href="#">Firewall Address and Port Information</a>
Ireland (IE)	34.253.190.192/26	<a href="#">Firewall Address and Port Information</a>

Data Center	IP Block	Addresses and Ports
Japan (JP)	18.176.203.112/29 13.231.6.232/29 57.181.58.0/28	<a href="#">Firewall Address and Port Information</a>
Netherlands (NL-GCP)	34.91.82.64/27	<a href="#">Firewall Address and Port Information</a>
Singapore (SG-GCP)	34.87.158.80/28	<a href="#">Firewall Address and Port Information</a>
Spain (ES)	18.101.49.128/27	<a href="#">Firewall Address and Port Information</a>
Sweden (SE)	13.48.186.224/29 13.48.4.184/29 13.48.4.240/28	<a href="#">Firewall Address and Port Information</a>
Switzerland (ACH)	51.107.1.192/28	<a href="#">Firewall Address and Port Information</a>
United Arab Emirates (UAE)	3.28.159.128/28	<a href="#">Firewall Address and Port Information</a>
United Kingdom (UK-AGB)	51.143.233.80/28	<a href="#">Firewall Address and Port Information</a>
US East (VA )	34.202.197.0/26 44.192.245.0/26 3.234.248.0/27	<a href="#">Firewall Address and Port Information</a>
US East 2 (VA2)	34.202.197.0/26 44.192.245.0/26 3.234.248.0/27	<a href="#">Firewall Address and Port Information</a>
US-Iowa (IA-GCP)	34.67.130.64/27	<a href="#">Firewall Address and Port Information</a>
US Ohio (OH)	3.145.235.64/26	<a href="#">Firewall Address and Port Information</a>

## Supported IQ Engine Software

See the [IQ Engine Release Notes](#) for information about IQ Engine version 10.8.7.

## Browser Support and Display Settings



### Note

ExtremeCloud IQ (New) does not support 32-bit browsers.

### Desktop Browsers

ExtremeCloud IQ (New) supports the latest 64-bit versions of the following desktop browsers:

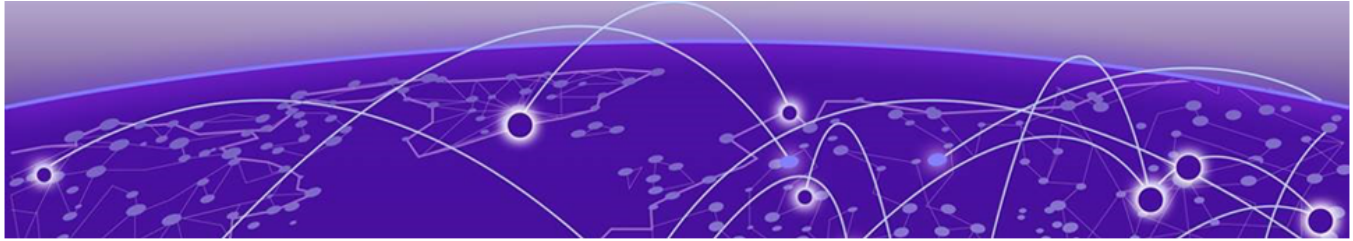
- Chrome
- Edge
- Firefox

- Opera
- Safari

Microsoft Internet Explorer is not supported.

## Display Settings

ExtremeCloud IQ (New) supports display resolutions of 1280 x 1024 or higher.



# New Features

---

[Table 1](#) on page 11 lists the new features introduced in ExtremeCloud IQ (New) release 25.11.0-280.

For more information about ExtremeCloud IQ (New) features, see the ExtremeCloud IQ (New) v25.11.0 User Guide.

## Device OS Support

This release supports the following device operating systems.

- **EXOS/Switch Engine:**

- IQAgent Version
  - EXOS/Switch Engine release < 31.7: upgrade to IQAgent version 0.9.32
  - EXOS/Switch Engine release >= 31.7 < 33.2 upgrade to IQAgent version 0.9.41
  - EXOS/Switch Engine release >= 33.2 upgrade to IQAgent version 1.9.41
- 33.5.2.118-patch1-6 Latest Supported GA Patch

Onboard, Monitor, Config, Image Mgmt, and Global Download Support

- 33.6.1 Latest Supported GA Image

Onboard, Monitor, Config, Image Mgmt, and Global Download Support

- 32.7.3.15-patch1-33 Previous Supported GA Patch

Onboard, Monitor, Config, Image Mgmt, and Global Download Support

- 32.7.3.15-patch1-33 Previous Supported GA Image

Onboard, Monitor, Config, Image Mgmt, and Global Download Support

- **VOSS/Fabric Engine:**

- 0.9.41 IQ Agent Support
- 9.4.0 Latest Supported GA Image

Onboard, Monitor, Config, Image Mgmt, and Global Download Support

- 9.2.3 Previous Supported GA Patch

Onboard, Monitor, Config, Image Mgmt, and Global Download Support

- 9.3.2 Previous Supported GA Image

Onboard, Monitor, Config, Image Mgmt, and Global Download Support

- **IQEngine Support:**

- IQEngine release 10.8.7

## New Hardware Support

ExtremeCloud IQ (New) contains no new hardware in this release.

**Table 1: New Features in release 25.11.0-280**

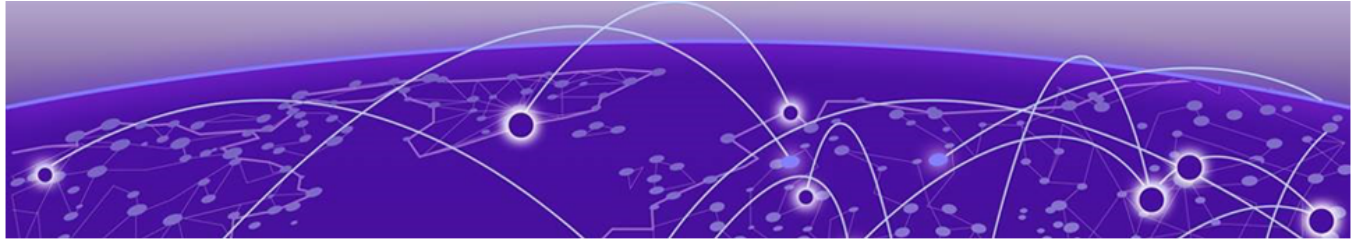
Feature ID	Feature	Description
WS-3925	Preferred Language Selection	Users can select their preferred display language from the profile center. Each user sets their own language preference independently of other users in the same organization. Supported languages include Portuguese (Brazil), French, Mandarin (Simplified Chinese), Italian, and Hindi, with English as the default.
XCP-17871	CoPilot Accessible Through the 9-dot App Switcher in ExtremeCloud IQ (New)	CoPilot is accessible through the 9-dot app switcher in ExtremeCloud IQ (New) for customers with an active CoPilot subscription. It appears under Apps for Admin (Full access), NetSecOps (Full access), and Observer (View only) roles. Selecting CoPilot opens a full-screen experience where users can access C360 or D360 modals. The entry point is removed once the subscription expires. CoPilot does not appear in Extreme Platform ONE Networking; Extreme Platform ONE Networking users must switch to ExtremeCloud IQ (New) to launch it.
XCP-18235	Manual Controller Onboard Support	Users can manually onboard controllers (ExtremeCloud IQ-C) to the cloud. The onboarding flow requires the serial number (Lock ID) and MAC address as mandatory entries, with optional location selection. Network Policy does not apply to controller onboarding. Onboarded controllers appear in the <b>Appliances</b> tab under <b>Monitor &gt; Network Devices</b> in ExtremeCloud IQ (New) and under <b>Inventory</b> and <b>Network Devices</b> in Extreme Platform ONE Networking. Controllers are not included in <b>Device Health</b> , <b>Usage</b> , or <b>Capacity</b> tabs.

**Table 1: New Features in release 25.11.0-280 (continued)**

Feature ID	Feature	Description
XIQ-47152	New Device Status Icon Filter Support	New Device Status icon filter support added in 25.11 for the following icons: <ul style="list-style-type: none"> <li>• Anchor AP</li> <li>• Locally Managed – ExtremeCloud IQ</li> <li>• Locally Managed – Not ExtremeCloud IQ</li> <li>• Device Update Unsuccessful</li> <li>• Provisioned Device Configuration</li> <li>• Roll Back Undetermined</li> <li>• Configured At Device Level</li> <li>• Switch Stack</li> <li>• Switch Stack Warning</li> <li>• Radsec Proxy Server</li> <li>• Sensor Mode Interface Active</li> <li>• Sensor Mode Interface Inactive</li> <li>• Spectrum Intelligence</li> <li>• Fabric Attach</li> <li>• Fabric Attach Issue</li> <li>• Managed By Extreme IoT</li> <li>• Configuration Pending</li> <li>• Connected Device</li> <li>• Disconnected Device</li> <li>• Configuration Audit Match</li> <li>• Configuration Audit Mismatch</li> <li>• Simulated Device</li> </ul>
XIQ-47937	Fabric Engine/VOSS 9.4.0 Support	Supports Fabric Engine/VOSS 9.4.0 for onboarding, monitoring, configuration, and image download for all supported SKUs, including 5000 and 7000 series Universal Switches, VSP7400, and VSP4900. Updates the downloadable image list to include 9.4.0 as the latest GA image, with 9.3.2 (N-1), 9.2.3 (N-2), and 8.10.9 for XA1400 only.
XIQ-48207	Deletion of Cloud-Onboarded Controllers	Users can delete cloud-onboarded controllers from the <b>Monitoring &gt; Network Devices &gt; Appliances</b> tab. Both single-select and multi-select delete actions are supported.

**Table 1: New Features in release 25.11.0-280 (continued)**

Feature ID	Feature	Description
XIQ-48209	D360 Detail View Available for Onboarded Controllers	A D360 (Device 360) detail view is available for onboarded controllers. The view displays controller information including operating mode, license state, firmware version, and health status. The summary section shows the controller type (physical appliance or UCP) with a clickable UCP hostname linking to D360. Client hostnames and MAC addresses link to the C360 page. The <b>Configure</b> action opens the native controller interface via SSO. The only supported action is <b>Delete</b> .
XIQ-48524	Service Management Tab	A new <b>Service Management</b> tab under <b>Global Settings</b> allows users to enable WIPS (Wireless Intrusion Prevention System) and Guest Services. WIPS service has a dependency on Network Policy, communicated through a pop-up notification. Users can enable but cannot disable services in this release; the toggle shows <b>Enabled</b> but is Inactive if a user attempts to disable.



# Addressed Issues

Table 2 lists Addressed Issues in ExtremeCloud IQ (New) release 25.11.0-280.

**Table 2: Addressed Issues in release 25.11.0-280**

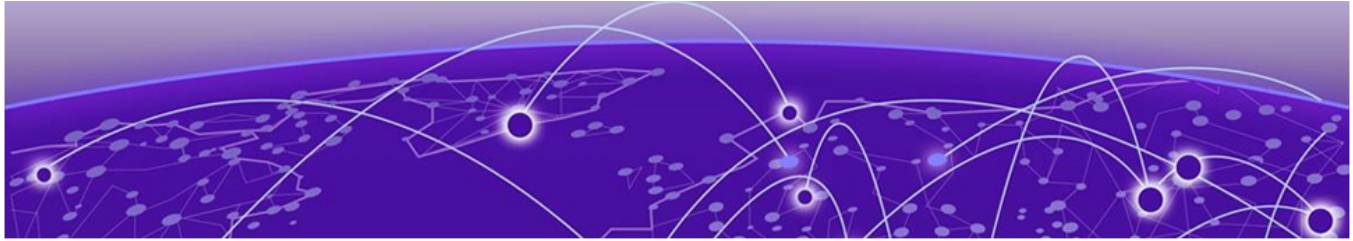
Issue ID	Description
<b>CFDs</b>	
CFD-17062	Addressed the issue where <b>Wireless &gt; Additional Settings &gt; Optional Settings &gt; 802.11xx</b> displayed "Create Schedule" instead of "Radio and Rates" in both ExtremeCloud IQ (Classic) and the new user interface.
<b>Alerts</b>	
XCP-21726	Addressed the issue where alerts that were bulk-acknowledged reverted to an unacknowledged state after the page was refreshed.
<b>API</b>	
XCP-19243	Addressed the issue where the PerfMon API returns inconsistent and non-deterministic data schemas for legacy device types.
XCP-20428	Addressed the issue where null values are returned for client IP address fields (client_ip and ipv4) in the wired client API response, even when an IP address is assigned and visible in ExtremeCloud IQ.
XCP-20647	Addressed the issue where the listDevice API returns the field "is_locally_managed" in the response payload, which is not defined in the API output specification.
XCP-20770	Addressed the issue where the asset summary/history API specification does not mark the request body as required in the OpenAPI specification.
XCP-20819	Addressed the issue where the ClientStats service sends the bwUsage field as an object containing avg, max, and min values instead of the required int64 format as defined in the specification.
XIQ-49961	Addressed the issue where the POST /ng-reports/scheduled/custom API returns a generic 400 BAD_REQUEST response without providing actionable validation details.
<b>Device Management</b>	
XCP-12743	Bulk delete operations are limited to approximately 250-287 devices due to ExtremeCloud IQ API path parameter constraints. Larger bulk operations will require event-based design implementation for proper scaling.

**Table 2: Addressed Issues in release 25.11.0-280 (continued)**

Issue ID	Description
XCP-21261	Addressed the issue where the Sites XML import functionality does not properly validate site hierarchy, allowing invalid XML files to be imported.
XIQ-49244	Addressed the issue where creating an auto-provisioning policy for AP5060 models enabled the IoT radio by default, causing a "missing IoT profile" error. The behavior now matches the AP template flow, where the IoT radio is not enabled by default.
XIQ-51114	Addressed an issue where the AFC agent used incorrect certification IDs for AP-5060U, AP-5060D, AP-5022, AP-5022FX, and AP-5022S6D access points.
<b>Logs</b>	
XCP-16530	Addressed the issue where the Audit logs are generated out of sequence when exporting a device.
<b>Onboarding</b>	
XCP-22846	Addressed the issue where serial numbers containing special characters from third-party devices onboarded using ExtremeCloud IQ-SE were rejected by the cloud. The serial numbers are sanitized or an expanded set of characters is accepted.
XIQ-49244	Addressed an issue where creating an auto provisioning policy for AP5060 devices would enable the IoT radio by default, causing a "missing IoT profile" error. The IoT radio now remains disabled during auto provisioning policy creation, consistent with the existing behavior when creating templates.
<b>Roles</b>	
XCP-20938	>Addressed the issue where BizOps users can successfully add a VOSS/Fabric Engine device on the <b>Network Devices</b> page but cannot see the added device on that page.
XCP-21028	Addressed the issue where creating both internal and external BizOps users is not possible when the RDC is running release 25.9.0 and the region is on release 25.10.0.
XCP-21282	Addressed the issue where SSO users with the Guest Management role cannot successfully create PPSK users and receive an <code>Access Denied</code> error when attempting to create accounts in user groups.
XCP-21527	Addressed the issue where an external user with the ExtremeCloud IQ Installer role is mapped to the Observer role in Extreme Platform ONE Networking instead of retaining the Installer role privileges.
<b>User Interface</b>	
WS-3923	Addressed the issue where the breadcrumb on the <b>Network Profile</b> page displays <b>Network Configuration / Network Policies</b> instead of only <b>Network Policies</b> , causing an inconsistency with the left navigation.

**Table 2: Addressed Issues in release 25.11.0-280 (continued)**

Issue ID	Description
XCP-16957	Addressed the issue where the <b>Firmware Upgrade History</b> page displays a maximum of two filtered columns.
XCP-18901	Addressed the issue where sorting tables based on location results in incorrect results and error messages.
XCP-19039	Addressed the issue where the <b>Device 360</b> page does not open if the same S/N is managed in the same RDC, but a different VIQ. Configuration assignment does not show the device in the selection if the same S/N is managed in the same RDC but a different VIQ.
XCP-20852	Addressed the issue where the Global Sites filter does not return sites in alphabetical order.
XCP-22743	Addressed an issue in the <b>Client Health</b> user interface where the <b>Unassigned IP</b> tile in the <b>IP Connectivity Issues</b> widget on the <b>Monitoring &gt; Clients</b> page was not displaying the unassigned IP count. The <b>Unassigned IP</b> tile now displays N/A instead of a count, because unassigned IP addresses are no longer classified as a connectivity issue. The tile remains visible in the widget to maintain consistency with the total client count shown in the page header.
<b>Visualize</b>	
NVO-15492	Addressed the issue when a new LACP Link Aggregation Group (LAG) is created between two EXOS devices, the websocket connection does not automatically detect and display the new LAG on the network visualization canvas. The LAG configuration is correctly established on both devices with LLDP neighbors present, but the canvas continues to show the individual ports as down connections rather than displaying the aggregated link bundle.
NVO-15501	Addressed the issue when a port was removed from an EXOS LACP Link Aggregation Group (LAG), the websocket connection did not detect the configuration change and the Inspector panel continued to display the original port count. After performing an <b>Update Topology</b> operation, the LAG status changed to <i>degraded</i> but the <b>Inspector</b> panel still incorrectly showed all original ports rather than reflecting the reduced port membership.
NVO-15689	Addressed the issue where the network visualization canvas does not automatically update to reflect the deletion of a Link Aggregation Group (LAG) between EXOS devices.



# Known Issues

Table 3 lists the Known Issues in ExtremeCloud IQ (New) release 25.11.0-280.

**Table 3: Known Issues in release 25.11.0-280**

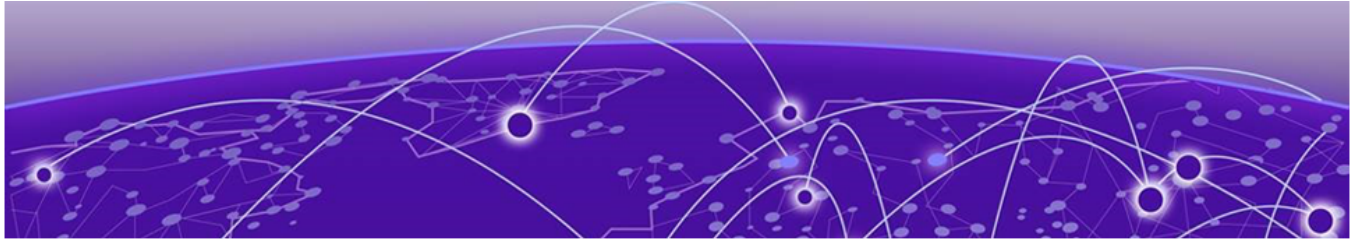
Issue ID	Description
<b>Device Management</b>	
XCP-5227	Incorrect <code>Managed_by</code> value for locally managed devices.
XCP-21263	When attempting to upgrade devices and filtering to show only locally managed devices, the device type field displays as empty and no devices are returned. This occurs even when locally managed devices exist and are onboarded in the system.
XIQ-19320	WiFi interface transmission power values may not update correctly in <b>Managed Device</b> page after bulk edit operations.
XIQ-19368	User interface overrides Supplemental CLI option incorrectly pushes Supplemental CLI configuration instead of UI configuration for multicast rate limit settings.
XIQ-19498	Changing transmission type for eth0 interface on AP5010 incorrectly generates delta CLI for speed configuration.
XIQ-19509	Configuring eth0 interface with minimum speed and half duplex transmission type causes AP to go offline.
XIQ-21339	ExtremeCloud IQ does not display error message when aggregation is enabled with rate-limit configuration, but configuration fails.
XIQ-33498	An issue exists where client mode and backhaul mesh link options need to be disabled on AP5050U/D 6GHz FCC configurations to ensure proper regulatory compliance.
XIQ-34724	An issue exists where delta configuration push fails for AP5020 Wifi0 with dual 5G mode when 5G-Low channels are not supported in countries like Pakistan.
XIQ-46182	An issue exists where the EXOS and Switch Engine 31.7.4.2-patch1-7 cannot be onboarded, monitored, or configured through drag-and-drop image management for all EXOS and Switch Engine supported SKUs.
<b>Logs</b>	
XIQ-47371	Multiple logs are generated for both single and bulk device deletions.
<b>Onboarding</b>	

**Table 3: Known Issues in release 25.11.0-280 (continued)**

Issue ID	Description
WS-3579	A toast notification splits into two separate messages when a user performs a navigation action while a toast is active, such as during onboarding or device deletion operations.
<b>Roles</b>	
XCP-10308	<b>Manage</b> or <b>Unmanage</b> actions are not performed for the NetSecOps role.
<b>SSO</b>	
XCP-8507	The login button does not activate for certain SSO-enabled user login instances.
XCP-22975	When logging out of an SSO account and logging back in with a different SSO user, the system may incorrectly display the previous user's account information. This occurs because session data from the prior login is not fully cleared on logout. <b>Workaround:</b> Fully close the browser (all tabs and windows) after logging out of the SSO account before logging in with the new user.
<b>Troubleshooting</b>	
XIQ-48210	Downloading the AFC Geolocation report produced a corrupt file that was not in the expected CSV format, making it unusable for troubleshooting.
<b>Upgrading</b>	
XCP-12063, XCP-12064, XCP-16651	An audit log is not generated for a scheduled a firmware upgrade, when a firmware upgrade successfully completes, or when a firmware upgrade fails.
XCP-13051	While a firmware upgrade is in progress for a device in Extreme Platform ONE Networking it is deleted in ExtremeCloud IQ.
XCP-14211	The <b>Firmware Version</b> dropdown is not visible during a firmware upgrade when multiple APs are selected and the last device in the list is reviewed on high-resolution displays.
XCP-17804	After upgrading to 25R7, the schema registry service encounters 409 errors for the hm-device-stats-value and xiq-client-events-value topics. The affected schemas must be deleted before the registry service calls can succeed.
<b>User Interface</b>	
XCP-4999	Currently, when filtering on a switch stack, when a search matches any child device, the entire stack is displayed instead of individual devices.
XCP-5065	<b>Search</b> and <b>Filter</b> does not filter the appliance cluster.
XCP-17326	Tables in the user interface refresh slowly when the pagination is set for 500.
XCP-19002	Fabric Attach links display as operationally down in the visualization even when they are operationally up. This issue affects Switch Engine downstream and SMLT Cluster upstream configurations that use Fabric Attach without authentication.

**Table 3: Known Issues in release 25.11.0-280 (continued)**

Issue ID	Description
XCP-20134	The filter chip for the Extreme Platform ONE Networking selection in the Application Access column filter in <b>Access Management</b> is not displayed, preventing confirmation that the filter has been applied.
XCP-22682	Management port statistics are not displayed on the <b>Usage and Capacity</b> page for Switch Engine/EXOS devices that have all standard ports disabled
XIQ-42050	An issue exists where FIPS enabled filter in <b>Manage Application</b> page displays all applications instead of filtering to show only FIPS-enabled applications.
XIQ-42051	An issue exists where FIPS enabled filter in <b>Manage Summary</b> widget shows inaccurate data for <b>Top Application Groups, Top Usage, and Total Application Usage</b> metrics.
XIQ-46203	On the <b>Monitoring &gt; Clients &gt; Users</b> tab, the Source value displays Other instead of Others.
XIQ-48218	Selecting <b>Configure</b> from <b>Network Devices</b> displays <b>Third Party Management</b> instead of <b>Configuration Profile</b> .
<b>Visualize</b>	
NVO-15660	A Link Aggregation Group (LAG) configured between an EXOS/Switch Engine switch and an Access Point intermittently loses its LAG visualization on the network canvas and displays as a single link instead. The LAG configuration is correctly shown on both the EXOS/Switch Engine device and the AP, but the visualization canvas fails to consistently represent the aggregated link bundle.



# Device Support Information

---

[Universal Compute Platform](#) on page 20

[Access Points](#) on page 20

[Switches](#) on page 22

[ExtremeCloud IQ Site Engine](#) on page 48

This section lists the devices that ExtremeCloud IQ supports and includes the latest version of the software that each device supports.



## Note

Site-Engine managed devices that are connected to ExtremeCloud IQ are unsupported in ExtremeCloud IQ (New).

## Universal Compute Platform

---

**Table 4: Required Firmware Versions for Universal Compute Platform**

Device Model	Latest Supported Release	Comments
ExtremeCloud Edge (UCP)	10.13.01	Supported hardware models: 1130C 2130C 3150C 3160C 4120C

## Access Points

---

Access Point information is provided in the following sections:

- [Universal Hardware](#) on page 21
- [IQ Engine \(Cloud Native\)](#) on page 22

## Universal Hardware

Device Model	Latest Supported Release	Recommended Minimum Release
AP302W	IQ Engine 10.8.7 WiNG OS 7.9.6.1 AP 10.19.01	IQ Engine 10.8.2
AP305C	IQ Engine 10.8.7 WiNG OS 7.9.6.1 AP 10.19.01	IQ Engine 10.8.2
AP305C-1	IQ Engine 10.8.7 WiNG OS 7.9.6.1 AP 10.19.01	IQ Engine 10.8.2
AP305CX	IQ Engine 10.8.7 WiNG OS 7.9.6.1 AP 10.19.01	IQ Engine 10.8.2
AP3000	IQ Engine 10.8.7 AP 10.19.01	IQ Engine 10.8.2
AP3000X	IQ Engine 10.8.7 AP 10.19.01	IQ Engine 10.8.2
AP4000	IQ Engine 10.8.7 AP 10.19.01	IQ Engine 10.8.2
AP4000-1	IQ Engine 10.8.7 AP 10.19.01	IQ Engine 10.8.2
AP4020	IQ Engine 10.8.7 AP 10.19.01	IQ Engine 10.8.2
AP410C	IQ Engine 10.8.7 WiNG OS 7.9.6.1 AP 10.19.01	IQ Engine 10.8.2
AP410C-1	IQ Engine 10.8.7 WiNG OS 7.9.6.1 AP 10.19.01	IQ Engine 10.8.2
AP460C	IQ Engine 10.8.7 WiNG OS 7.9.6.1 AP 10.19.01	IQ Engine 10.8.2
AP460S6C	IQ Engine 10.8.7 WiNG OS 7.9.6.1 AP 10.19.01	IQ Engine 10.8.2
AP460S12C	IQ Engine 10.8.7 WiNG OS 7.9.6.1 AP 10.19.01	IQ Engine 10.8.2

Device Model	Latest Supported Release	Recommended Minimum Release
AP5010	IQ Engine 10.8.7 WiNG OS 7.9.6.1 AP 10.19.01	IQ Engine 10.8.2
AP5020	IQ Engine 10.8.7 AP 10.19.01	IQ Engine 10.8.2
AP5022/FX/S6D	IQ Engine 10.8.7 AP 10.19.01	IQ Engine 10.8.2
AP5050U/D	IQ Engine 10.8.7 AP 10.19.01	IQ Engine 10.8.2
AP5060U/D	IQ Engine 10.8.7 AP 10.19.01	IQ Engine 10.8.2
AP510C/CX	IQ Engine 10.8.7 AP 10.19.01	IQ Engine 10.8.2

## IQ Engine (Cloud Native)

Device Model	Latest Supported Release	Comments
AP630	IQ Engine 10.8.7	Platform support introduced with IQ Engine 10.0.1. <a href="#">End of Life Information</a>
AP650	IQ Engine 10.8.7	Platform support introduced with IQ Engine 10.0.1. <a href="#">End of Life Information</a>
AP650X	IQ Engine 10.8.7	Platform support introduced with IQ Engine 10.0.1. <a href="#">End of Life Information</a>
AP150W	IQ Engine 10.6.1a	Platform support introduced with IQ Engine 8.1.1. <a href="#">End of Life Information</a>
AP130	IQ Engine 10.6.1a	Platform support introduced with IQ Engine 8.2.1. <a href="#">End of Life Information</a>
Atom AP30	IQ Engine 10.6.1a	Platform support introduced with IQ Engine 8.3.2. <a href="#">End of Life Information</a>

## Switches

Switch information is provided in the following sections:

- [Universal Hardware](#) on page 23
- [ExtremeXOS](#) on page 42
- [VOSS](#) on page 46

For the latest release notes for Fabric Engine and Switch Engine , see the [Extreme Networks Documentation Site](#).

## Universal Hardware

Device Model	Latest Supported Release	Standalone Support	Stack Support
4120-24MW-4Y	Switch Engine 33.6	<ul style="list-style-type: none"> <li>Onboard</li> <li>Monitor</li> <li>Template- and device-level configuration</li> <li>SSH Proxy*</li> <li>Supplemental CLI*</li> </ul> <p><b>Note:</b> Pilot license required to configure advanced features.</p>	<ul style="list-style-type: none"> <li>Onboard</li> <li>Monitor</li> <li>Template- and device-level configuration</li> <li>SSH Proxy*</li> <li>Up to 8 unit stacking</li> <li>200Gb stacking through two built-in QSFP28 ports</li> </ul> <p><b>Note:</b> Can only stack with other 4120 devices. Cross stacking between 4120 and 4220 is not supported. Cross stacking between 4000 and 5000 is not supported.</p>
4120-48MW-4Y	Switch Engine 33.6	<ul style="list-style-type: none"> <li>Onboard</li> <li>Monitor</li> <li>Template- and device-level configuration</li> <li>SSH Proxy*</li> <li>Supplemental CLI*</li> </ul> <p><b>Note:</b> Pilot license required to configure advanced features.</p>	<ul style="list-style-type: none"> <li>Onboard</li> <li>Monitor</li> <li>Template- and device-level configuration</li> <li>SSH Proxy*</li> <li>Up to 8 unit stacking</li> <li>200Gb stacking through two built-in QSFP28 ports</li> </ul> <p><b>Note:</b> Can only stack with other 4120 devices. Cross stacking between 4120 and 4220 is not supported. Cross stacking between 4000 and 5000 is not supported.</p>

Device Model	Latest Supported Release	Standalone Support	Stack Support
4120-Series-Stack	Switch Engine 33.6	<ul style="list-style-type: none"> <li>• Onboard</li> <li>• Monitor</li> <li>• Template- and device-level configuration</li> <li>• SSH Proxy*</li> <li>• Supplemental CLI*</li> </ul> <p><b>Note:</b> Pilot license required to configure advanced features.</p>	<ul style="list-style-type: none"> <li>• Onboard</li> <li>• Monitor</li> <li>• Template- and device-level configuration</li> <li>• SSH Proxy*</li> <li>• Up to 8 unit stacking</li> <li>• 200Gb stacking through two built-in QSFP28 ports</li> </ul> <p><b>Note:</b> Can only stack with other 4120 devices. Cross stacking between 4120 and 4220 is not supported. Cross stacking between 4000 and 5000 is not supported.</p>
4220-12P-4X	Switch Engine 33.6 Fabric Engine 9.4	<p><b>Switch Engine:</b></p> <ul style="list-style-type: none"> <li>• Onboard</li> <li>• Monitor</li> <li>• Template- and device-level configuration</li> <li>• SSH Proxy*</li> <li>• Supplemental CLI*</li> </ul> <p><b>Fabric Engine:</b> Monitor</p> <p><b>Note:</b> Pilot license required to configure advanced features.</p>	<ul style="list-style-type: none"> <li>• Onboard</li> <li>• Monitor</li> <li>• Template- and device-level configuration</li> <li>• SSH Proxy*</li> <li>• Up to 8 unit stacking</li> <li>• 40Gb stacking through two built-in SFP+ uplink ports</li> </ul> <p><b>Note:</b> Can only stack with other 4220 devices. Cross stacking between 4120 and 4220 is not supported. Cross stacking between 4000 and 5000 is not supported.</p>

Device Model	Latest Supported Release	Standalone Support	Stack Support
4220-12T-4X	Switch Engine 33.6 Fabric Engine 9.4	<p><b>Switch Engine:</b></p> <ul style="list-style-type: none"> <li>• Onboard</li> <li>• Monitor</li> <li>• Template- and device-level configuration</li> <li>• SSH Proxy*</li> <li>• Supplemental CLI*</li> </ul> <p><b>Fabric Engine:</b> Monitor</p> <p><b>Note:</b> Pilot license required to configure advanced features.</p>	<ul style="list-style-type: none"> <li>• Onboard</li> <li>• Monitor</li> <li>• Template- and device-level configuration</li> <li>• SSH Proxy*</li> <li>• Up to 8 unit stacking</li> <li>• 40Gb stacking through two built-in SFP+ uplink ports</li> </ul> <p><b>Note:</b> Can only stack with other 4220 devices. Cross stacking between 4120 and 4220 is not supported. Cross stacking between 4000 and 5000 is not supported.</p>
4220-24P-4X	Switch Engine 33.6 Fabric Engine 9.4	<p><b>Switch Engine:</b></p> <ul style="list-style-type: none"> <li>• Onboard</li> <li>• Monitor</li> <li>• Template- and device-level configuration</li> <li>• SSH Proxy*</li> <li>• Supplemental CLI*</li> </ul> <p><b>Fabric Engine:</b> Monitor</p> <p><b>Note:</b> Pilot license required to configure advanced features.</p>	<ul style="list-style-type: none"> <li>• Onboard</li> <li>• Monitor</li> <li>• Template- and device-level configuration</li> <li>• SSH Proxy*</li> <li>• Up to 8 unit stacking</li> <li>• 40Gb stacking through two built-in SFP+ uplink ports</li> </ul> <p><b>Note:</b> Can only stack with other 4220 devices. Cross stacking between 4120 and 4220 is not supported. Cross stacking between 4000 and 5000 is not supported.</p>

Device Model	Latest Supported Release	Standalone Support	Stack Support
4220-24T-4X	Switch Engine 33.6 Fabric Engine 9.4	<p><b>Switch Engine:</b></p> <ul style="list-style-type: none"> <li>• Onboard</li> <li>• Monitor</li> <li>• Template- and device-level configuration</li> <li>• SSH Proxy*</li> <li>• Supplemental CLI*</li> </ul> <p><b>Fabric Engine:</b> Device-level Configuration</p> <p><b>Note:</b> Pilot license required to configure advanced features.</p>	<ul style="list-style-type: none"> <li>• Onboard</li> <li>• Monitor</li> <li>• Template- and device-level configuration</li> <li>• SSH Proxy*</li> <li>• Up to 8 unit stacking</li> <li>• 40Gb stacking through two built-in SFP+ uplink ports</li> </ul> <p><b>Note:</b> Can only stack with other 4220 devices. Cross stacking between 4120 and 4220 is not supported. Cross stacking between 4000 and 5000 is not supported.</p>
4220-48P-4X	Switch Engine 33.6	<ul style="list-style-type: none"> <li>• Onboard</li> <li>• Monitor</li> <li>• Template- and device-level configuration</li> <li>• SSH Proxy*</li> <li>• Supplemental CLI*</li> </ul> <p><b>Note:</b> Pilot license required to configure advanced features.</p>	<ul style="list-style-type: none"> <li>• Onboard</li> <li>• Monitor</li> <li>• Template- and device-level configuration</li> <li>• SSH Proxy*</li> <li>• Up to 8 unit stacking</li> <li>• 40Gb stacking through two built-in SFP+ uplink ports</li> </ul> <p><b>Note:</b> Can only stack with other 4220 devices. Cross stacking between 4120 and 4220 is not supported. Cross stacking between 4000 and 5000 is not supported.</p>

Device Model	Latest Supported Release	Standalone Support	Stack Support
4220-48T-4X	Switch Engine 33.6	<ul style="list-style-type: none"> <li>• Onboard</li> <li>• Monitor</li> <li>• Template- and device-level configuration</li> <li>• SSH Proxy*</li> <li>• Supplemental CLI*</li> </ul> <p><b>Note:</b> Pilot license required to configure advanced features.</p>	<ul style="list-style-type: none"> <li>• Onboard</li> <li>• Monitor</li> <li>• Template- and device-level configuration</li> <li>• SSH Proxy*</li> <li>• Up to 8 unit stacking</li> <li>• 40Gb stacking through two built-in SFP+ uplink ports</li> </ul> <p><b>Note:</b> Can only stack with other 4220 devices. Cross stacking between 4120 and 4220 is not supported. Cross stacking between 4000 and 5000 is not supported.</p>
4220-4MW-20P-4X	Switch Engine 33.6 Fabric Engine 9.4	<p><b>Switch Engine:</b></p> <ul style="list-style-type: none"> <li>• Onboard</li> <li>• Monitor</li> <li>• Template- and device-level configuration</li> <li>• SSH Proxy*</li> <li>• Supplemental CLI*</li> </ul> <p><b>Fabric Engine:</b> Device-level Configuration</p> <p><b>Note:</b> Pilot license required to configure advanced features.</p>	<ul style="list-style-type: none"> <li>• Onboard</li> <li>• Monitor</li> <li>• Template- and device-level configuration</li> <li>• SSH Proxy*</li> <li>• Up to 8 unit stacking</li> <li>• 40Gb stacking through two built-in SFP+ uplink ports</li> </ul> <p><b>Note:</b> Can only stack with other 4220 devices. Cross stacking between 4120 and 4220 is not supported. Cross stacking between 4000 and 5000 is not supported.</p>

Device Model	Latest Supported Release	Standalone Support	Stack Support
4220-4MW-8P-4X	Switch Engine 33.6 Fabric Engine 9.4	<p><b>Switch Engine:</b></p> <ul style="list-style-type: none"> <li>• Onboard</li> <li>• Monitor</li> <li>• Template- and device-level configuration</li> <li>• SSH Proxy*</li> <li>• Supplemental CLI*</li> </ul> <p><b>Fabric Engine:</b> Device-level Configuration</p> <p><b>Note:</b> Pilot license required to configure advanced features.</p>	<ul style="list-style-type: none"> <li>• Onboard</li> <li>• Monitor</li> <li>• Template- and device-level configuration</li> <li>• SSH Proxy*</li> <li>• Up to 8 unit stacking</li> <li>• 40Gb stacking through two built-in SFP+ uplink ports</li> </ul> <p><b>Note:</b> Can only stack with other 4220 devices. Cross stacking between 4120 and 4220 is not supported. Cross stacking between 4000 and 5000 is not supported.</p>
4220-8MW-40P-4X	Switch Engine 33.6	<p><b>Switch Engine:</b></p> <ul style="list-style-type: none"> <li>• Onboard</li> <li>• Monitor</li> <li>• Template- and device-level configuration</li> <li>• SSH Proxy*</li> <li>• Supplemental CLI*</li> </ul> <p><b>Fabric Engine:</b> Device-level Configuration</p> <p><b>Note:</b> Pilot license required to configure advanced features.</p>	<ul style="list-style-type: none"> <li>• Onboard</li> <li>• Monitor</li> <li>• Template- and device-level configuration</li> <li>• SSH Proxy*</li> <li>• Up to 8 unit stacking</li> <li>• 40Gb stacking through two built-in SFP+ uplink ports</li> </ul> <p><b>Note:</b> Can only stack with other 4220 devices. Cross stacking between 4120 and 4220 is not supported. Cross stacking between 4000 and 5000 is not supported.</p>

Device Model	Latest Supported Release	Standalone Support	Stack Support
4220-8X	Switch Engine 33.6 Fabric Engine 9.4	<p><b>Switch Engine:</b></p> <ul style="list-style-type: none"> <li>• Onboard</li> <li>• Monitor</li> <li>• Template- and device-level configuration</li> <li>• SSH Proxy*</li> <li>• Supplemental CLI*</li> </ul> <p><b>Fabric Engine:</b> Device-level Configuration</p> <p><b>Note:</b> Pilot license required to configure advanced features.</p>	<ul style="list-style-type: none"> <li>• Onboard</li> <li>• Monitor</li> <li>• Template- and device-level configuration</li> <li>• SSH Proxy*</li> <li>• Up to 8 unit stacking</li> <li>• 40Gb stacking through two built-in SFP+ uplink ports</li> </ul> <p><b>Note:</b> Can only stack with other 4220 devices. Cross stacking between 4120 and 4220 is not supported. Cross stacking between 4000 and 5000 is not supported.</p>
4220-Series-Stack	Switch Engine 33.6	<ul style="list-style-type: none"> <li>• Onboard</li> <li>• Monitor</li> <li>• Template- and device-level configuration</li> <li>• SSH Proxy*</li> <li>• Supplemental CLI*</li> </ul> <p><b>Note:</b> Pilot license required to configure advanced features.</p>	<ul style="list-style-type: none"> <li>• Onboard</li> <li>• Monitor</li> <li>• Template- and device-level configuration</li> <li>• SSH Proxy*</li> <li>• Up to 8 unit stacking</li> <li>• 40Gb stacking through two built-in SFP+ uplink ports</li> </ul> <p><b>Note:</b> Can only stack with other 4220 devices. Cross stacking between 4120 and 4220 is not supported. Cross stacking between 4000 and 5000 is not supported.</p>

Device Model	Latest Supported Release	Standalone Support	Stack Support
5120-24X-4Y	Switch Engine 33.6	<ul style="list-style-type: none"> <li>• Onboard</li> <li>• Monitor</li> <li>• Template- and device-level configuration</li> <li>• SSH Proxy*</li> <li>• Supplemental CLI*</li> </ul> <p><b>Note:</b> Pilot license required to configure advanced features.</p>	<ul style="list-style-type: none"> <li>• Onboard</li> <li>• Monitor</li> <li>• Template- and device-level configuration</li> <li>• SSH Proxy*</li> <li>• Up to 8 unit stacking</li> <li>• Ability to toggle universal ports from stacking-support enabled to stacking-support disabled</li> <li>• Two QSFP28 uplink ports that can operate at 1x100G, 4x10G, or 4x25G</li> </ul> <p><b>Note:</b> Can only stack with other 5120 devices. Cross stacking between 4000 and 5000 is not supported.</p>
5120-24XT-4Y	Switch Engine 33.6	<ul style="list-style-type: none"> <li>• Onboard</li> <li>• Monitor</li> <li>• Template- and device-level configuration</li> <li>• SSH Proxy*</li> <li>• Supplemental CLI*</li> </ul> <p><b>Note:</b> Pilot license required to configure advanced features.</p>	<ul style="list-style-type: none"> <li>• Onboard</li> <li>• Monitor</li> <li>• Template- and device-level configuration</li> <li>• SSH Proxy*</li> <li>• Up to 8 unit stacking</li> <li>• Ability to toggle universal ports from stacking-support enabled to stacking-support disabled</li> <li>• Two QSFP28 uplink ports that can operate at 1x100G, 4x10G, or 4x25G</li> </ul> <p><b>Note:</b> Can only stack with other 5120 devices. Cross stacking between 4000 and 5000 is not supported.</p>

Device Model	Latest Supported Release	Standalone Support	Stack Support
5120-44X-4Y-2C	Switch Engine 33.6	<ul style="list-style-type: none"> <li>• Onboard</li> <li>• Monitor</li> <li>• Template- and device-level configuration</li> <li>• SSH Proxy*</li> <li>• Supplemental CLI*</li> </ul> <p><b>Note:</b> Pilot license required to configure advanced features.</p>	<ul style="list-style-type: none"> <li>• Onboard</li> <li>• Monitor</li> <li>• Template- and device-level configuration</li> <li>• SSH Proxy*</li> <li>• Up to 8 unit stacking</li> <li>• Ability to toggle universal ports from stacking-support enabled to stacking-support disabled</li> <li>• Two QSFP28 uplink ports that can operate at 1x100G, 4x10G, or 4x25G</li> </ul> <p><b>Note:</b> Can only stack with other 5120 devices. Cross stacking between 4000 and 5000 is not supported.</p>
5120-Series-Stack	Switch Engine 33.6	<ul style="list-style-type: none"> <li>• Onboard</li> <li>• Monitor</li> <li>• Template- and device-level configuration</li> <li>• SSH Proxy*</li> <li>• Supplemental CLI*</li> </ul> <p><b>Note:</b> Pilot license required to configure advanced features.</p>	<ul style="list-style-type: none"> <li>• Onboard</li> <li>• Monitor</li> <li>• Template- and device-level configuration</li> <li>• SSH Proxy*</li> <li>• Up to 8 unit stacking</li> <li>• Ability to toggle universal ports from stacking-support enabled to stacking-support disabled</li> <li>• Two QSFP28 uplink ports that can operate at 1x100G, 4x10G, or 4x25G</li> </ul> <p><b>Note:</b> Can only stack with other 5120 devices. Cross stacking between 4000 and 5000 is not supported.</p>

Device Model	Latest Supported Release	Standalone Support	Stack Support
5320-16P-4XE	Switch Engine 33.6 Fabric Engine 9.4	<ul style="list-style-type: none"> <li>Monitor</li> <li>Template- and device-level configuration</li> <li>SSH Proxy*</li> <li>Supplemental CLI*</li> </ul> <p><b>Note:</b> Fabric Engine only supports device-level configuration.</p>	<p><b>Switch Engine:</b></p> <ul style="list-style-type: none"> <li>Monitor</li> <li>Template- and device-level configuration</li> <li>SSH Proxy</li> </ul> <p><b>Note:</b> Cross stacking between 4000 and 5000 is not supported.</p>
5320-16P-4XE-DC	Switch Engine 33.6 Fabric Engine 9.4	<ul style="list-style-type: none"> <li>Monitor</li> <li>Template- and device-level configuration</li> <li>SSH Proxy*</li> <li>Supplemental CLI*</li> </ul> <p><b>Note:</b> Fabric Engine only supports device-level configuration.</p>	<p><b>Switch Engine:</b></p> <ul style="list-style-type: none"> <li>Monitor</li> <li>Template- and device-level configuration</li> <li>SSH Proxy</li> </ul> <p><b>Note:</b> Cross stacking between 4000 and 5000 is not supported.</p>
5320-24T-8XE	Switch Engine 33.6 Fabric Engine 9.4	<ul style="list-style-type: none"> <li>Monitor</li> <li>Template- and device-level configuration</li> <li>SSH Proxy*</li> <li>Supplemental CLI*</li> </ul> <p><b>Note:</b> Fabric Engine only supports device-level configuration.</p>	<ul style="list-style-type: none"> <li>Monitor</li> <li>Template- and device-level configuration</li> <li>SSH Proxy</li> </ul> <p><b>Note:</b> Cross stacking between 4000 and 5000 is not supported.</p>
5320-24P-8XE	Switch Engine 33.6 Fabric Engine 9.4	<ul style="list-style-type: none"> <li>Monitor</li> <li>Template- and device-level configuration</li> <li>SSH Proxy*</li> <li>Supplemental CLI*</li> </ul> <p><b>Note:</b> Fabric Engine only supports device-level configuration.</p>	<ul style="list-style-type: none"> <li>Monitor</li> <li>Template- and device-level configuration</li> <li>SSH Proxy</li> </ul> <p><b>Note:</b> Cross stacking between 4000 and 5000 is not supported.</p>

Device Model	Latest Supported Release	Standalone Support	Stack Support
5320-48T-8XE	Switch Engine 33.6 Fabric Engine 9.4	<ul style="list-style-type: none"> <li>• Monitor</li> <li>• Template- and device-level configuration</li> <li>• SSH Proxy*</li> <li>• Supplemental CLI*</li> </ul> <p><b>Note:</b> Fabric Engine only supports device-level configuration.</p>	<ul style="list-style-type: none"> <li>• Monitor</li> <li>• Template- and device-level configuration</li> <li>• SSH Proxy</li> </ul> <p><b>Note:</b> Cross stacking between 4000 and 5000 is not supported.</p>
5320-48P-8XE	Switch Engine 33.6 Fabric Engine 9.4	<ul style="list-style-type: none"> <li>• Monitor</li> <li>• Template- and device-level configuration</li> <li>• SSH Proxy*</li> <li>• Supplemental CLI*</li> </ul> <p><b>Note:</b> Fabric Engine only supports device-level configuration.</p>	<ul style="list-style-type: none"> <li>• Monitor</li> <li>• Template- and device-level configuration</li> <li>• SSH Proxy</li> </ul> <p><b>Note:</b> Cross stacking between 4000 and 5000 is not supported.</p>
5420F-24T-4XE	Switch Engine 33.6 Fabric Engine 9.4	<ul style="list-style-type: none"> <li>• Monitor</li> <li>• Template- and device-level configuration</li> <li>• SSH Proxy*</li> <li>• Supplemental CLI*</li> </ul> <p><b>Note:</b> Fabric Engine only supports device-level configuration.</p>	<ul style="list-style-type: none"> <li>• Monitor</li> <li>• Template- and device-level configuration</li> <li>• SSH Proxy</li> </ul> <p><b>Note:</b> Cross stacking between 4000 and 5000 is not supported.</p>
5420F-24P-4XE	Switch Engine 33.6 Fabric Engine 9.4	<ul style="list-style-type: none"> <li>• Monitor</li> <li>• Template- and device-level configuration</li> <li>• SSH Proxy*</li> <li>• Supplemental CLI*</li> </ul> <p><b>Note:</b> Fabric Engine only supports device-level configuration.</p>	<ul style="list-style-type: none"> <li>• Monitor</li> <li>• Template- and device-level configuration</li> <li>• SSH Proxy</li> </ul> <p><b>Note:</b> Cross stacking between 4000 and 5000 is not supported.</p>

Device Model	Latest Supported Release	Standalone Support	Stack Support
5420F-24S-4XE	Switch Engine 33.6 Fabric Engine 9.4	<ul style="list-style-type: none"> <li>• Monitor</li> <li>• Template- and device-level configuration</li> <li>• SSH Proxy*</li> <li>• Supplemental CLI*</li> </ul>	<ul style="list-style-type: none"> <li>• Monitor</li> <li>• Template- and device-level configuration</li> <li>• SSH Proxy</li> </ul> <p><b>Note:</b> Cross stacking between 4000 and 5000 is not supported.</p>
5420F-48T-4XE	Switch Engine 33.6 Fabric Engine 9.4	<ul style="list-style-type: none"> <li>• Monitor</li> <li>• Template- and device-level configuration</li> <li>• SSH Proxy*</li> <li>• Supplemental CLI*</li> </ul> <p><b>Note:</b> Fabric Engine only supports device-level configuration.</p>	<ul style="list-style-type: none"> <li>• Monitor</li> <li>• Template- and device-level configuration</li> <li>• SSH Proxy</li> </ul> <p><b>Note:</b> Cross stacking between 4000 and 5000 is not supported.</p>
5420F-48P-4XE	Switch Engine 33.6 Fabric Engine 9.4	<ul style="list-style-type: none"> <li>• Monitor</li> <li>• Template- and device-level configuration</li> <li>• SSH Proxy*</li> <li>• Supplemental CLI*</li> </ul> <p><b>Note:</b> Fabric Engine only supports device-level configuration.</p>	<ul style="list-style-type: none"> <li>• Monitor</li> <li>• Template- and device-level configuration</li> <li>• SSH Proxy</li> </ul> <p><b>Note:</b> Cross stacking between 4000 and 5000 is not supported.</p>
5420F-48P-4XL	Switch Engine 33.6 Fabric Engine 9.4	<ul style="list-style-type: none"> <li>• Monitor</li> <li>• Template- and device-level configuration</li> <li>• SSH Proxy*</li> <li>• Supplemental CLI*</li> </ul> <p><b>Note:</b> Fabric Engine only supports device-level configuration.</p>	<ul style="list-style-type: none"> <li>• Monitor</li> <li>• Template- and device-level configuration</li> <li>• SSH Proxy</li> </ul>

Device Model	Latest Supported Release	Standalone Support	Stack Support
5420F-8W-16P-4XE	Switch Engine 33.6 Fabric Engine 9.4	<ul style="list-style-type: none"> <li>Monitor</li> <li>Template- and device-level configuration</li> <li>SSH Proxy*</li> <li>Supplemental CLI*</li> </ul> <p><b>Note:</b> Fabric Engine only supports device-level configuration.</p>	<ul style="list-style-type: none"> <li>Monitor</li> <li>Template- and device-level configuration</li> <li>SSH Proxy</li> </ul> <p><b>Note:</b> Cross stacking between 4000 and 5000 is not supported.</p>
5420F-16W-32P-4XE	Switch Engine 33.6 Fabric Engine 9.4	<ul style="list-style-type: none"> <li>Monitor</li> <li>Template- and device-level configuration</li> <li>SSH Proxy*</li> <li>Supplemental CLI*</li> </ul> <p><b>Note:</b> Fabric Engine only supports device-level configuration.</p>	<ul style="list-style-type: none"> <li>Monitor</li> <li>Template- and device-level configuration</li> <li>SSH Proxy</li> </ul> <p><b>Note:</b> Cross stacking between 4000 and 5000 is not supported.</p>
5420F-16MW-32P-4XE	Switch Engine 33.6 Fabric Engine 9.4	<ul style="list-style-type: none"> <li>Monitor</li> <li>Template- and device-level configuration</li> <li>SSH Proxy*</li> <li>Supplemental CLI*</li> </ul>	<ul style="list-style-type: none"> <li>Monitor</li> <li>Template- and device-level configuration</li> <li>SSH Proxy</li> </ul> <p><b>Note:</b> Cross stacking between 4000 and 5000 is not supported.</p>
5420M-24T-4YE	Switch Engine 33.6 Fabric Engine 9.4	<ul style="list-style-type: none"> <li>Monitor</li> <li>Template- and device-level configuration</li> <li>SSH Proxy*</li> <li>Supplemental CLI*</li> </ul> <p><b>Note:</b> Fabric Engine only supports device-level configuration.</p>	<ul style="list-style-type: none"> <li>Monitor</li> <li>Template- and device-level configuration</li> <li>SSH Proxy</li> </ul> <p><b>Note:</b> Cross stacking between 4000 and 5000 is not supported.</p>

Device Model	Latest Supported Release	Standalone Support	Stack Support
5420M-24W-4YE	Switch Engine 33.6 Fabric Engine 9.4	<ul style="list-style-type: none"> <li>• Monitor</li> <li>• Template- and device-level configuration</li> <li>• SSH Proxy*</li> <li>• Supplemental CLI*</li> </ul> <p><b>Note:</b> Fabric Engine only supports device-level configuration.</p>	<ul style="list-style-type: none"> <li>• Monitor</li> <li>• Template- and device-level configuration</li> <li>• SSH Proxy</li> </ul> <p><b>Note:</b> Cross stacking between 4000 and 5000 is not supported.</p>
5420M-48T-4YE	Switch Engine 33.6 Fabric Engine 9.4	<ul style="list-style-type: none"> <li>• Monitor</li> <li>• Template- and device-level configuration</li> <li>• SSH Proxy*</li> <li>• Supplemental CLI*</li> </ul> <p><b>Note:</b> Fabric Engine only supports device-level configuration.</p>	<ul style="list-style-type: none"> <li>• Monitor</li> <li>• Template- and device-level configuration</li> <li>• SSH Proxy</li> </ul> <p><b>Note:</b> Cross stacking between 4000 and 5000 is not supported.</p>
5420M-48W-4YE	Switch Engine 33.6 Fabric Engine 9.4	<ul style="list-style-type: none"> <li>• Monitor</li> <li>• Template- and device-level configuration</li> <li>• SSH Proxy*</li> <li>• Supplemental CLI*</li> </ul> <p><b>Note:</b> Fabric Engine only supports device-level configuration.</p>	<ul style="list-style-type: none"> <li>• Monitor</li> <li>• Template- and device-level configuration</li> <li>• SSH Proxy</li> </ul> <p><b>Note:</b> Cross stacking between 4000 and 5000 is not supported.</p>
5420M-16MW-32P-4YE	Switch Engine 33.6 Fabric Engine 9.4	<ul style="list-style-type: none"> <li>• Monitor</li> <li>• Template- and device-level configuration</li> <li>• SSH Proxy*</li> <li>• Supplemental CLI*</li> </ul> <p><b>Note:</b> Fabric Engine only supports device-level configuration.</p>	<ul style="list-style-type: none"> <li>• Monitor</li> <li>• Template- and device-level configuration</li> <li>• SSH Proxy</li> </ul> <p><b>Note:</b> Cross stacking between 4000 and 5000 is not supported.</p>

Device Model	Latest Supported Release	Standalone Support	Stack Support
5520-24W	Switch Engine 33.6 Fabric Engine 9.4	<ul style="list-style-type: none"> <li>Monitor</li> <li>Template- and device-level configuration</li> <li>SSH Proxy*</li> <li>Supplemental CLI*</li> </ul> <p><b>Note:</b> Fabric Engine only supports device-level configuration.</p>	<ul style="list-style-type: none"> <li>Monitor</li> <li>Template- and device-level configuration</li> <li>SSH Proxy</li> </ul> <p><b>Note:</b> Cross stacking between 4000 and 5000 is not supported.</p>
5520-24T	Switch Engine 33.6 Fabric Engine 9.4	<ul style="list-style-type: none"> <li>Monitor</li> <li>Template- and device-level configuration</li> <li>SSH Proxy*</li> <li>Supplemental CLI*</li> </ul> <p><b>Note:</b> Fabric Engine only supports device-level configuration.</p>	<ul style="list-style-type: none"> <li>Monitor</li> <li>Template- and device-level configuration</li> <li>SSH Proxy</li> </ul> <p><b>Note:</b> Cross stacking between 4000 and 5000 is not supported.</p>
5520-24T-ACDC	Switch Engine 33.6 Fabric Engine 9.4	<ul style="list-style-type: none"> <li>Monitor</li> <li>Template- and device-level configuration</li> <li>SSH Proxy*</li> <li>Supplemental CLI*</li> </ul> <p><b>Note:</b> Fabric Engine only supports device-level configuration.</p>	<p><b>Switch Engine:</b></p> <ul style="list-style-type: none"> <li>Monitor</li> <li>Template- and device-level configuration</li> <li>SSH Proxy</li> </ul> <p><b>Note:</b> Cross stacking between 4000 and 5000 is not supported.</p>
5520-24X-ACDC	Switch Engine 33.6 Fabric Engine 9.4	<ul style="list-style-type: none"> <li>Monitor</li> <li>Template- and device-level configuration</li> <li>SSH Proxy*</li> <li>Supplemental CLI*</li> </ul> <p><b>Note:</b> Fabric Engine only supports device-level configuration.</p>	<p><b>Switch Engine:</b></p> <ul style="list-style-type: none"> <li>Monitor</li> <li>Template- and device-level configuration</li> <li>SSH Proxy</li> </ul> <p><b>Note:</b> Cross stacking between 4000 and 5000 is not supported.</p>

Device Model	Latest Supported Release	Standalone Support	Stack Support
5520-48W	Switch Engine 33.6 Fabric Engine 9.4	<ul style="list-style-type: none"> <li>• Monitor</li> <li>• Template- and device-level configuration</li> <li>• SSH Proxy*</li> <li>• Supplemental CLI*</li> </ul> <p><b>Note:</b> Fabric Engine only supports device-level configuration.</p>	<ul style="list-style-type: none"> <li>• Monitor</li> <li>• Template- and device-level configuration</li> <li>• SSH Proxy</li> </ul> <p><b>Note:</b> Cross stacking between 4000 and 5000 is not supported.</p>
5520-48T	Switch Engine 33.6 Fabric Engine 9.4	<ul style="list-style-type: none"> <li>• Monitor</li> <li>• Template- and device-level configuration</li> <li>• SSH Proxy*</li> <li>• Supplemental CLI*</li> </ul> <p><b>Note:</b> Fabric Engine only supports device-level configuration.</p>	<ul style="list-style-type: none"> <li>• Monitor</li> <li>• Template- and device-level configuration</li> <li>• SSH Proxy</li> </ul> <p><b>Note:</b> Cross stacking between 4000 and 5000 is not supported.</p>
5520-48T-ACDC	Switch Engine 33.6 Fabric Engine 9.4	<ul style="list-style-type: none"> <li>• Monitor</li> <li>• Template- and device-level configuration</li> <li>• SSH Proxy*</li> <li>• Supplemental CLI*</li> </ul> <p><b>Note:</b> Fabric Engine only supports device-level configuration.</p>	<ul style="list-style-type: none"> <li>• Monitor</li> <li>• Template- and device-level configuration</li> <li>• SSH Proxy</li> </ul> <p><b>Note:</b> Cross stacking between 4000 and 5000 is not supported.</p>
5520-12MW-36W	Switch Engine 33.6 Fabric Engine 9.4	<ul style="list-style-type: none"> <li>• Monitor</li> <li>• Template- and device-level configuration</li> <li>• SSH Proxy*</li> <li>• Supplemental CLI*</li> </ul> <p><b>Note:</b> Fabric Engine only supports device-level configuration.</p>	<ul style="list-style-type: none"> <li>• Monitor</li> <li>• Template- and device-level configuration</li> <li>• SSH Proxy</li> </ul> <p><b>Note:</b> Cross stacking between 4000 and 5000 is not supported.</p>

Device Model	Latest Supported Release	Standalone Support	Stack Support
5520-48SE	Switch Engine 33.6 Fabric Engine 9.4	<ul style="list-style-type: none"> <li>Monitor</li> <li>Template- and device-level configuration</li> <li>SSH Proxy*</li> <li>Supplemental CLI*</li> </ul> <p><b>Note:</b> Fabric Engine only supports device-level configuration.</p>	<ul style="list-style-type: none"> <li>Monitor</li> <li>Template- and device-level configuration</li> <li>SSH Proxy</li> </ul> <p><b>Note:</b> Cross stacking between 4000 and 5000 is not supported.</p>
5520-48SE-ACDC	Switch Engine 33.6 Fabric Engine 9.4	<ul style="list-style-type: none"> <li>Monitor</li> <li>Template- and device-level configuration</li> <li>SSH Proxy*</li> <li>Supplemental CLI*</li> </ul> <p><b>Note:</b> Fabric Engine only supports device-level configuration.</p>	<ul style="list-style-type: none"> <li>Monitor</li> <li>Template- and device-level configuration</li> <li>SSH Proxy</li> </ul> <p><b>Note:</b> Cross stacking between 4000 and 5000 is not supported.</p>
5520-24X	Switch Engine 33.6 Fabric Engine 9.4	<ul style="list-style-type: none"> <li>Monitor</li> <li>Template- and device-level configuration</li> <li>SSH Proxy*</li> <li>Supplemental CLI*</li> </ul> <p><b>Note:</b> Fabric Engine only supports device-level configuration.</p>	<p><b>Switch Engine:</b></p> <ul style="list-style-type: none"> <li>Monitor</li> <li>Template- and device-level configuration</li> <li>SSH Proxy</li> </ul> <p><b>Note:</b> Cross stacking between 4000 and 5000 is not supported.</p>
5720-24MW	Switch Engine 33.6 Fabric Engine 9.4	<ul style="list-style-type: none"> <li>Monitor</li> <li>Template- and device-level configuration</li> <li>SSH Proxy*</li> <li>Supplemental CLI*</li> </ul> <p><b>Note:</b> Fabric Engine only supports device-level configuration.</p>	<p><b>Switch Engine:</b></p> <ul style="list-style-type: none"> <li>Monitor</li> <li>Template- and device-level configuration</li> <li>SSH Proxy</li> </ul> <p><b>Note:</b> Cross stacking between 4000 and 5000 is not supported.</p>

Device Model	Latest Supported Release	Standalone Support	Stack Support
5720-48MW	Switch Engine 33.6 Fabric Engine 9.4	<ul style="list-style-type: none"> <li>Monitor</li> <li>Template- and device-level configuration</li> <li>SSH Proxy*</li> <li>Supplemental CLI*</li> </ul> <p><b>Note:</b> Fabric Engine only supports device-level configuration.</p>	<p><b>Switch Engine:</b></p> <ul style="list-style-type: none"> <li>Monitor</li> <li>Template- and device-level configuration</li> <li>SSH Proxy</li> </ul> <p><b>Note:</b> Cross stacking between 4000 and 5000 is not supported.</p>
5720-24MXW	Switch Engine 33.6 Fabric Engine 9.4	<ul style="list-style-type: none"> <li>Monitor</li> <li>Template- and device-level configuration</li> <li>SSH Proxy*</li> <li>Supplemental CLI*</li> </ul> <p><b>Note:</b> Fabric Engine only supports device-level configuration.</p>	<p><b>Switch Engine:</b></p> <ul style="list-style-type: none"> <li>Monitor</li> <li>Template- and device-level configuration</li> <li>SSH Proxy</li> </ul> <p><b>Note:</b> Cross stacking between 4000 and 5000 is not supported.</p>
5720-48MXW	Switch Engine 33.6 Fabric Engine 9.4	<ul style="list-style-type: none"> <li>Monitor</li> <li>Template- and device-level configuration</li> <li>SSH Proxy*</li> <li>Supplemental CLI*</li> </ul> <p><b>Note:</b> Fabric Engine only supports device-level configuration.</p>	<p><b>Switch Engine:</b></p> <ul style="list-style-type: none"> <li>Monitor</li> <li>Template- and device-level configuration</li> <li>SSH Proxy</li> </ul> <p><b>Note:</b> Cross stacking between 4000 and 5000 is not supported.</p>
7520-48Y	Switch Engine 33.6 Fabric Engine 9.4	<p><b>Switch Engine:</b></p> <ul style="list-style-type: none"> <li>Monitor</li> <li>Template- and device-level configuration</li> <li>SSH Proxy*</li> <li>Supplemental CLI*</li> </ul> <p><b>Fabric Engine:</b> Device-level Configuration</p>	<p><b>Switch Engine:</b></p> <ul style="list-style-type: none"> <li>Monitor</li> <li>Template- and device-level configuration</li> <li>SSH Proxy</li> </ul> <p><b>Note:</b> Cross stacking between 4000 and 5000 is not supported.</p>

Device Model	Latest Supported Release	Standalone Support	Stack Support
7520-48YE	Switch Engine 33.6 Fabric Engine 9.4	<b>Switch Engine:</b> <ul style="list-style-type: none"> <li>Monitor</li> <li>Template- and device-level configuration</li> <li>SSH Proxy*</li> <li>Supplemental CLI*</li> </ul> <b>Fabric Engine:</b> Device-level Configuration	<b>Switch Engine:</b> <ul style="list-style-type: none"> <li>Monitor</li> <li>Template- and device-level configuration</li> <li>SSH Proxy</li> </ul> <b>Note:</b> Cross stacking between 4000 and 5000 is not supported.
7520-48XT	Switch Engine 33.6 Fabric Engine 9.4	<b>Switch Engine:</b> <ul style="list-style-type: none"> <li>Monitor</li> <li>Template- and device-level configuration</li> <li>SSH Proxy*</li> <li>Supplemental CLI*</li> </ul> <b>Fabric Engine:</b> Device-level Configuration	<b>Switch Engine:</b> <ul style="list-style-type: none"> <li>Monitor</li> <li>Template- and device-level configuration</li> <li>SSH Proxy</li> </ul> <b>Note:</b> Cross stacking between 4000 and 5000 is not supported.
7720-32c	Switch Engine 33.6 Fabric Engine 9.4	<b>Switch Engine:</b> <ul style="list-style-type: none"> <li>Monitor</li> <li>Template- and device-level configuration</li> <li>SSH Proxy*</li> <li>Supplemental CLI*</li> </ul> <b>Fabric Engine:</b> Device-level Configuration	<b>Switch Engine:</b> <ul style="list-style-type: none"> <li>Monitor</li> <li>Template- and device-level configuration</li> <li>SSH Proxy</li> </ul> <b>Note:</b> Cross stacking between 4000 and 5000 is not supported.



#### Note

\* SSH Proxy and Supplemental CLI can be used for configuring additional parameters not currently available within template or device-level configurations.

## ExtremeXOS

Device Model	Latest Supported Release	Standalone Support	Stack Support
X435-8P-2T-W	ExtremeXOS 33.6	<ul style="list-style-type: none"> <li>• Monitor</li> <li>• Template- and device-level configuration</li> <li>• SSH Proxy*</li> <li>• Supplemental CLI*</li> </ul>	N/A
X435-24T-4S	ExtremeXOS 33.6	<ul style="list-style-type: none"> <li>• Monitor</li> <li>• Template- and device-level configuration</li> <li>• SSH Proxy*</li> <li>• Supplemental CLI*</li> </ul>	N/A
X435-24P-4S	ExtremeXOS 33.6	<ul style="list-style-type: none"> <li>• Monitor</li> <li>• Template- and device-level configuration</li> <li>• SSH Proxy*</li> <li>• Supplemental CLI*</li> </ul>	N/A
X435-8T-4S	ExtremeXOS 33.6	<ul style="list-style-type: none"> <li>• Monitor</li> <li>• Template- and device-level configuration</li> <li>• SSH Proxy*</li> <li>• Supplemental CLI*</li> </ul>	N/A
X435-8P-4S	ExtremeXOS 33.6	<ul style="list-style-type: none"> <li>• Monitor</li> <li>• Template- and device-level configuration</li> <li>• SSH Proxy*</li> <li>• Supplemental CLI*</li> </ul>	N/A
X440-G2-12p-10GE4	ExtremeXOS 33.6	<ul style="list-style-type: none"> <li>• Monitor</li> <li>• Template- and device-level configuration</li> <li>• SSH Proxy*</li> <li>• Supplemental CLI*</li> </ul>	<ul style="list-style-type: none"> <li>• Monitor</li> <li>• Template- and device-level configuration</li> <li>• SSH Proxy*</li> <li>• Supplemental CLI*</li> </ul>
X440-G2-12t-10GE4	ExtremeXOS 33.6	<ul style="list-style-type: none"> <li>• Monitor</li> <li>• Template- and device-level configuration</li> <li>• SSH Proxy*</li> <li>• Supplemental CLI*</li> </ul>	<ul style="list-style-type: none"> <li>• Monitor</li> <li>• Template- and device-level configuration</li> <li>• SSH Proxy*</li> <li>• Supplemental CLI*</li> </ul>

Device Model	Latest Supported Release	Standalone Support	Stack Support
X440-G2-24p-10GE4	ExtremeXOS 33.6	<ul style="list-style-type: none"> <li>• Monitor</li> <li>• Template- and device-level configuration</li> <li>• SSH Proxy*</li> <li>• Supplemental CLI*</li> </ul>	<ul style="list-style-type: none"> <li>• Monitor</li> <li>• Template- and device-level configuration</li> <li>• SSH Proxy*</li> <li>• Supplemental CLI*</li> </ul>
X440-G2-24t-10GE4	ExtremeXOS 33.6	<ul style="list-style-type: none"> <li>• Monitor</li> <li>• Template- and device-level configuration</li> <li>• SSH Proxy*</li> <li>• Supplemental CLI*</li> </ul>	<ul style="list-style-type: none"> <li>• Monitor</li> <li>• Template- and device-level configuration</li> <li>• SSH Proxy*</li> <li>• Supplemental CLI*</li> </ul>
X440-G2-48p-10GE4	ExtremeXOS 33.6	<ul style="list-style-type: none"> <li>• Monitor</li> <li>• Template- and device-level configuration</li> <li>• SSH Proxy*</li> <li>• Supplemental CLI*</li> </ul>	<ul style="list-style-type: none"> <li>• Monitor</li> <li>• Template- and device-level configuration</li> <li>• SSH Proxy*</li> <li>• Supplemental CLI*</li> </ul>
X440-G2-48t-10GE4	ExtremeXOS 33.6	<ul style="list-style-type: none"> <li>• Monitor</li> <li>• Template- and device-level configuration</li> <li>• SSH Proxy*</li> <li>• Supplemental CLI*</li> </ul>	<ul style="list-style-type: none"> <li>• Monitor</li> <li>• Template- and device-level configuration</li> <li>• SSH Proxy*</li> <li>• Supplemental CLI*</li> </ul>
X450-G2-24p-GE4	ExtremeXOS 33.6	<ul style="list-style-type: none"> <li>• Monitor</li> <li>• Template- and device-level configuration</li> <li>• SSH Proxy*</li> <li>• Supplemental CLI*</li> </ul>	Monitor
X450-G2-24p-10GE4	ExtremeXOS 33.6	<ul style="list-style-type: none"> <li>• Monitor</li> <li>• Template- and device-level configuration</li> <li>• SSH Proxy*</li> <li>• Supplemental CLI*</li> </ul>	Monitor
X450-G2-48p-10GE4	ExtremeXOS 33.6	<ul style="list-style-type: none"> <li>• Monitor</li> <li>• Template- and device-level configuration</li> <li>• SSH Proxy*</li> <li>• Supplemental CLI*</li> </ul>	Monitor

Device Model	Latest Supported Release	Standalone Support	Stack Support
X460-G2-16mp-32p-10GE4	ExtremeXOS 33.6	<ul style="list-style-type: none"> <li>• Monitor</li> <li>• Template- and device-level configuration</li> <li>• SSH Proxy*</li> <li>• S</li> </ul>	Monitor
X460-G2-24p-10GE4	ExtremeXOS 33.6	<ul style="list-style-type: none"> <li>• Monitor</li> <li>• Template- and device-level configuration</li> <li>• SSH Proxy*</li> <li>• Supplemental CLI*</li> </ul>	Monitor
X460-G2-24p-GE4	ExtremeXOS 33.6	<ul style="list-style-type: none"> <li>• Monitor</li> <li>• Template- and device-level configuration</li> <li>• SSH Proxy*</li> <li>• S</li> </ul>	Monitor
X460-G2-24p-24hp-10GE4	ExtremeXOS 33.6	<ul style="list-style-type: none"> <li>• Monitor</li> <li>• Template- and device-level configuration</li> <li>• SSH Proxy*</li> <li>• Supplemental CLI*</li> </ul>	Monitor
X460-G2-24t-10GE4	ExtremeXOS 33.6	<ul style="list-style-type: none"> <li>• Monitor</li> <li>• Template- and device-level configuration</li> <li>• SSH Proxy*</li> <li>• Supplemental CLI*</li> </ul>	Monitor
X460-G2-24t-GE4	ExtremeXOS 33.6	<ul style="list-style-type: none"> <li>• Monitor</li> <li>• Template- and device-level configuration</li> <li>• SSH Proxy*</li> <li>• Supplemental CLI*</li> </ul>	Monitor
X460-G2-24t-24ht-10GE4	ExtremeXOS 33.6	<ul style="list-style-type: none"> <li>• Monitor</li> <li>• Template- and device-level configuration</li> <li>• SSH Proxy*</li> <li>• Supplemental CLI*</li> </ul>	Monitor
X460-G2-24x-10GE4	ExtremeXOS 33.6	<ul style="list-style-type: none"> <li>• Monitor</li> <li>• Template- and device-level configuration</li> <li>• SSH Proxy*</li> <li>• Supplemental CLI*</li> </ul>	Monitor

Device Model	Latest Supported Release	Standalone Support	Stack Support
X460-G2-48p-10GE4	ExtremeXOS 33.6	<ul style="list-style-type: none"> <li>• Monitor</li> <li>• Template- and device-level configuration</li> <li>• SSH Proxy*</li> <li>• Supplemental CLI*</li> </ul>	Monitor
X460-G2-48t-10GE4	ExtremeXOS 33.6	<ul style="list-style-type: none"> <li>• Monitor</li> <li>• Template- and device-level configuration</li> <li>• SSH Proxy*</li> <li>• Supplemental CLI*</li> </ul>	Monitor
X460-G2-48t-GE4	ExtremeXOS 33.6	<ul style="list-style-type: none"> <li>• Monitor</li> <li>• Template- and device-level configuration</li> <li>• SSH Proxy*</li> <li>• Supplemental CLI*</li> </ul>	Monitor
X460-G2-48x-10GE4	ExtremeXOS 33.6	<ul style="list-style-type: none"> <li>• Monitor</li> <li>• Template- and device-level configuration</li> <li>• SSH Proxy*</li> <li>• Supplemental CLI*</li> </ul>	Monitor
X465-24W	ExtremeXOS 33.6	<ul style="list-style-type: none"> <li>• Monitor</li> <li>• Template- and device-level configuration</li> <li>• SSH Proxy*</li> <li>• Supplemental CLI*</li> </ul>	Monitor
X465-48W	ExtremeXOS 33.6	<ul style="list-style-type: none"> <li>• Monitor</li> <li>• Template- and device-level configuration</li> <li>• SSH Proxy*</li> <li>• Supplemental CLI*</li> </ul>	Monitor
X465-24MU	ExtremeXOS 33.6	<ul style="list-style-type: none"> <li>• Monitor</li> <li>• Template- and device-level configuration</li> <li>• SSH Proxy*</li> <li>• Supplemental CLI*</li> </ul>	Monitor

Device Model	Latest Supported Release	Standalone Support	Stack Support
X465-48P	ExtremeXOS 33.6	<ul style="list-style-type: none"> <li>• Monitor</li> <li>• Template- and device-level configuration</li> <li>• SSH Proxy*</li> <li>• Supplemental CLI*</li> </ul>	Monitor
X465-24MU-24W	ExtremeXOS 33.6	<ul style="list-style-type: none"> <li>• Monitor</li> <li>• Template- and device-level configuration</li> <li>• SSH Proxy*</li> <li>• Supplemental CLI*</li> </ul>	Monitor

**Note**

\* SSH Proxy and Supplemental CLI can be used for configuring additional parameters not currently available within template or device-level configurations.

## VOSS

Device Model	Latest Supported Release	Standalone Support	Stack Support
VSP7432CQ	VOSS 9.4.0.0	<ul style="list-style-type: none"> <li>• Monitor</li> <li>• Device-level configuration</li> <li>• SSH Proxy*</li> <li>• Supplemental CLI*</li> </ul>	Not supported
VSP7400-48Y	VOSS 9.4.0.0	<ul style="list-style-type: none"> <li>• Monitor</li> <li>• Device-level configuration</li> <li>• SSH Proxy*</li> <li>• Supplemental CLI*</li> </ul>	Not supported
VSP4900-48P	VOSS 9.4.0.0	<ul style="list-style-type: none"> <li>• Monitor</li> <li>• Device-level configuration</li> <li>• SSH Proxy*</li> <li>• Supplemental CLI*</li> </ul>	Not supported
VSP4900-24XE	VOSS 9.4.0.0	<ul style="list-style-type: none"> <li>• Monitor</li> <li>• Device-level configuration</li> <li>• SSH Proxy*</li> <li>• Supplemental CLI*</li> </ul>	Not supported

Device Model	Latest Supported Release	Standalone Support	Stack Support
VSP4900-24S	VOSS 9.4.0.0	<ul style="list-style-type: none"><li>• Monitor</li><li>• Device-level configuration</li><li>• SSH Proxy*</li><li>• Supplemental CLI*</li></ul>	Not supported
VSP4900-12MXU-12XE	VOSS 9.4.0.0	<ul style="list-style-type: none"><li>• Monitor</li><li>• Device-level configuration</li><li>• SSH Proxy*</li><li>• Supplemental CLI*</li></ul>	Not supported

**Note**

\* SSH Proxy and Supplemental CLI can be used for configuring additional parameters not currently available within template or device-level configurations.

## ExtremeCloud IQ Site Engine

ExtremeCloud IQ Site Engine Version	Supported Features
25.5.11	<ul style="list-style-type: none"> <li>• License allocation</li> <li>• Device Assignment to the ExtremeCloud IQ (New)</li> <li>• Device Statistics</li> <li>• Port Statistics</li> <li>• Unmanage/Manage device</li> <li>• Device Group to CCG mapping</li> <li>• Open Site Engine with SSO</li> <li>• Stack members</li> <li>• NAC details update for wireless end-systems</li> <li>• Wired end-systems reported to ExtremeCloud IQ (New)</li> <li>• Detect and report orphaned devices</li> <li>• Compatible with Extreme Platform ONE subscriptions</li> </ul>
25.5.12	<ul style="list-style-type: none"> <li>• License allocation</li> <li>• Device Assignment to the ExtremeCloud IQ (New)</li> <li>• Device Statistics</li> <li>• Port Statistics</li> <li>• Unmanage/Manage device</li> <li>• Device Group to CCG mapping</li> <li>• Open Site Engine with SSO</li> <li>• Stack members</li> <li>• NAC details update for wireless end-systems</li> <li>• Wired end-systems reported to ExtremeCloud IQ (New)</li> <li>• Detect and report orphaned devices</li> <li>• Compatible with Extreme Platform ONE subscriptions</li> </ul>
25.8.10	<ul style="list-style-type: none"> <li>• License allocation</li> <li>• Device Assignment to the ExtremeCloud IQ (New)</li> <li>• Device Statistics</li> <li>• Port Statistics</li> <li>• Unmanage/Manage device</li> <li>• Device Group to CCG mapping</li> <li>• Open Site Engine with SSO</li> <li>• Stack members</li> <li>• NAC details update for wireless end-systems</li> <li>• Wired end-systems reported to ExtremeCloud IQ (New)</li> <li>• Detect and report orphaned devices</li> <li>• Compatible with Extreme Platform ONE subscriptions</li> </ul>

ExtremeCloud IQ Site Engine Version	Supported Features
25.8.11	<ul style="list-style-type: none"> <li>• License allocation</li> <li>• Device Assignment to the ExtremeCloud IQ (New)</li> <li>• Device Statistics</li> <li>• Port Statistics</li> <li>• Unmanage/Manage device</li> <li>• Device Group to CCG mapping</li> <li>• Open Site Engine with SSO</li> <li>• Stack members</li> <li>• NAC details update for wireless end-systems</li> <li>• Wired end-systems reported to ExtremeCloud IQ (New)</li> <li>• Detect and report orphaned devices</li> <li>• Compatible with Extreme Platform ONE subscriptions</li> </ul>
25.8.12	<ul style="list-style-type: none"> <li>• License allocation</li> <li>• Device Assignment to the ExtremeCloud IQ (New)</li> <li>• Device Statistics</li> <li>• Port Statistics</li> <li>• Unmanage/Manage device</li> <li>• Device Group to CCG mapping</li> <li>• Open Site Engine with SSO</li> <li>• Stack members</li> <li>• NAC details update for wireless end-systems</li> <li>• Wired end-systems reported to ExtremeCloud IQ (New)</li> <li>• Detect and report orphaned devices</li> <li>• Compatible with Extreme Platform ONE subscriptions</li> </ul>
25.8.13	<ul style="list-style-type: none"> <li>• License allocation</li> <li>• Device Assignment to the ExtremeCloud IQ (New)</li> <li>• Device Statistics</li> <li>• Port Statistics</li> <li>• Unmanage/Manage device</li> <li>• Device Group to CCG mapping</li> <li>• Open Site Engine with SSO</li> <li>• Stack members</li> <li>• NAC details update for wireless end-systems</li> <li>• Wired end-systems reported to ExtremeCloud IQ (New)</li> <li>• Detect and report orphaned devices</li> <li>• Compatible with Extreme Platform ONE subscriptions</li> </ul>

ExtremeCloud IQ Site Engine Version	Supported Features
25.11.10	<ul style="list-style-type: none"> <li>• License allocation</li> <li>• Device Assignment to the ExtremeCloud IQ (New)</li> <li>• Device Statistics</li> <li>• Port Statistics</li> <li>• Unmanage/Manage device</li> <li>• Device Group to CCG mapping</li> <li>• Open Site Engine with SSO</li> <li>• Stack members</li> <li>• NAC details update for wireless end-systems</li> <li>• Wired end-systems reported to ExtremeCloud IQ (New)</li> <li>• Detect and report orphaned devices</li> <li>• Compatible with Extreme Platform ONE subscriptions</li> </ul>
25.11.11	<ul style="list-style-type: none"> <li>• License allocation</li> <li>• Device Assignment to the ExtremeCloud IQ (New)</li> <li>• Device Statistics</li> <li>• Port Statistics</li> <li>• Unmanage/Manage device</li> <li>• Device Group to CCG mapping</li> <li>• Open Site Engine with SSO</li> <li>• Stack members</li> <li>• NAC details update for wireless end-systems</li> <li>• Wired end-systems reported to ExtremeCloud IQ (New)</li> <li>• Detect and report orphaned devices</li> <li>• Compatible with Extreme Platform ONE subscriptions</li> </ul>
25.11.12	<ul style="list-style-type: none"> <li>• License allocation</li> <li>• Device Assignment to the ExtremeCloud IQ (New)</li> <li>• Device Statistics</li> <li>• Port Statistics</li> <li>• Unmanage/Manage device</li> <li>• Device Group to CCG mapping</li> <li>• Open Site Engine with SSO</li> <li>• Stack members</li> <li>• NAC details update for wireless end-systems</li> <li>• Wired end-systems reported to ExtremeCloud IQ (New)</li> <li>• Detect and report orphaned devices</li> <li>• Compatible with Extreme Platform ONE subscriptions</li> </ul>

ExtremeCloud IQ Site Engine Version	Supported Features
26.02.10	<ul style="list-style-type: none"> <li>• License allocation</li> <li>• Device Assignment to the ExtremeCloud IQ (New)</li> <li>• Device Statistics</li> <li>• Port Statistics</li> <li>• Unmanage/Manage device</li> <li>• Device Group to CCG mapping</li> <li>• Open Site Engine with SSO</li> <li>• Stack members</li> <li>• NAC details update for wireless end-systems</li> <li>• Wired end-systems reported to ExtremeCloud IQ (New)</li> <li>• Detect and report orphaned devices</li> <li>• Compatible with Extreme Platform ONE subscriptions</li> </ul>
26.02.11	<ul style="list-style-type: none"> <li>• License allocation</li> <li>• Device Assignment to the ExtremeCloud IQ (New)</li> <li>• Device Statistics</li> <li>• Port Statistics</li> <li>• Unmanage/Manage device</li> <li>• Device Group to CCG mapping</li> <li>• Open Site Engine with SSO</li> <li>• Stack members</li> <li>• NAC details update for wireless end-systems</li> <li>• Wired end-systems reported to ExtremeCloud IQ (New)</li> <li>• Detect and report orphaned devices</li> <li>• Compatible with Extreme Platform ONE subscriptions</li> </ul>
26.02.12	<ul style="list-style-type: none"> <li>• License allocation</li> <li>• Device Assignment to the ExtremeCloud IQ (New)</li> <li>• Device Statistics</li> <li>• Port Statistics</li> <li>• Unmanage/Manage device</li> <li>• Device Group to CCG mapping</li> <li>• Open Site Engine with SSO</li> <li>• Stack members</li> <li>• NAC details update for wireless end-systems</li> <li>• Wired end-systems reported to ExtremeCloud IQ (New)</li> <li>• Detect and report orphaned devices</li> <li>• Compatible with Extreme Platform ONE subscriptions</li> </ul>

ExtremeCloud IQ Site Engine Version	Supported Features
26.02.13	<ul style="list-style-type: none"> <li>• License allocation</li> <li>• Device Assignment to the ExtremeCloud IQ (New)</li> <li>• Device Statistics</li> <li>• Port Statistics</li> <li>• Unmanage/Manage device</li> <li>• Device Group to CCG mapping</li> <li>• Open Site Engine with SSO</li> <li>• Stack members</li> <li>• NAC details update for wireless end-systems</li> <li>• Wired end-systems reported to ExtremeCloud IQ (New)</li> <li>• Detect and report orphaned devices</li> <li>• Compatible with Extreme Platform ONE subscriptions</li> </ul>
26.06.10	<ul style="list-style-type: none"> <li>• License allocation</li> <li>• Device Assignment to the ExtremeCloud IQ (New)</li> <li>• Device Statistics</li> <li>• Port Statistics</li> <li>• Unmanage/Manage device</li> <li>• Device Group to CCG mapping</li> <li>• Open Site Engine with SSO</li> <li>• Stack members</li> <li>• NAC details update for wireless end-systems</li> <li>• Wired end-systems reported to ExtremeCloud IQ (New)</li> <li>• Detect and report orphaned devices</li> <li>• Compatible with Extreme Platform ONE subscriptions</li> </ul>