



ExtremeCloud IQ (New) v25.6.1-75 Release Notes

Enhancements, Fixes, and Supported Devices

9039495-01 Rev AA
December 2025



Copyright © 2025 Extreme Networks, Inc. All rights reserved.

Legal Notice

Extreme Networks, Inc. reserves the right to make changes in specifications and other information contained in this document and its website without prior notice. The reader should in all cases consult representatives of Extreme Networks to determine whether any such changes have been made.

The hardware, firmware, software or any specifications described or referred to in this document are subject to change without notice.

Trademarks

Extreme Networks and the Extreme Networks logo are trademarks or registered trademarks of Extreme Networks, Inc. in the United States and/or other countries.

All other names (including any product names) mentioned in this document are the property of their respective owners and may be trademarks or registered trademarks of their respective companies/owners.

For additional information on Extreme Networks trademarks, see: <https://www.extremenetworks.com/about-extreme-networks/company/legal/trademarks>

Open Source Declarations

Some software files have been licensed under certain open source or third-party licenses.

End-user license agreements and open source declarations can be found at: <https://www.extremenetworks.com/support/policies/open-source-declaration/>



Table of Contents

Abstract.....	iv
Help and Support.....	v
General Release Information.....	6
Current Release: 25.6.1-75.....	6
Release: 25.6.1-75 Addressed Issues.....	6
ExtremeCloud IQ (New) Public IP Address Blocks.....	6
Supported IQ Engine Software.....	7
Browser Support and Display Settings.....	7
Desktop Browsers.....	8
Display Settings.....	8
Previous Release.....	9
New Features.....	9
Addressed Issues.....	12
Known Issues.....	15
Device Support Information.....	19
Universal Compute Platform.....	19
Access Points.....	19
Universal Hardware.....	20
IQ Engine (Cloud Native).....	21
Switches.....	21
Universal Hardware.....	23
ExtremeXOS.....	42
VOSS.....	46



Abstract

This release notes document for ExtremeCloud™ IQ (New) version 25.6.1-75 outlines enhancements, resolved issues, known limitations, and expanded device support across the platform. It introduces support for EXOS/Switch Engine 33.4.1.15 and 32.7.3.15-patch1-19, IQ Engine 10.8.5, and VOSS 9.3, enabling onboard, monitor, configuration, and image management for a wide range of switches and access points, including Wi-Fi 7 APs. Key new features include WBA OpenRoaming for AP4020X, Fabric Attach Redundancy, automatic stack member onboarding with license allocation, UL OFDMA support, and WPA3 Personal Transition Mode. The document provides detailed guidance on supported hardware, browser compatibility, public IP address blocks, and configuration capabilities such as SSH Proxy and Supplemental CLI. It also addresses over 40 resolved issues spanning account management, onboarding, licensing, UI, and device management, while listing known issues affecting APIs, SSO, visualization, and role-based access. Revision AB of this document highlights known issues related to the Monitoring > Clients > Users tab. This technical document is intended for IT professionals and network administrators and assumes a moderate to advanced understanding of network infrastructure and cloud-managed environments.



Help and Support

If you require assistance, contact Extreme Networks using one of the following methods:

Extreme Portal

Search the GTAC (Global Technical Assistance Center) knowledge base; manage support cases and service contracts; download software; and obtain product licensing, training, and certifications.

The Hub

A forum for Extreme Networks customers to connect with one another, answer questions, and share ideas and feedback. This community is monitored by Extreme Networks employees, but is not intended to replace specific guidance from GTAC.

Call GTAC

For immediate support: (800) 998 2408 (toll-free in U.S. and Canada) or 1 (408) 579 2800. For the support phone number in your country, visit www.extremenetworks.com/support/contact.



General Release Information

[Browser Support and Display Settings](#) on page 7

Current Release: 25.6.1-75

December 2025

Release: 25.6.1-75 Addressed Issues

Issue ID	Description
CFD-15551	Addressed the issue where ExtremeCloud IQ API calls failed to get the device list from the page verified.
XCP-2944	Fixed an issue where the Function column of the xcloud_device_inventory table displayed SWITCH_ENGINE instead of FABRIC_ENGINE for Fabric Engine/VOSS devices.
XCP-14878	Resolved an issue with the display of a gray bar in the middle of the Firmware Status widget.
XCP-15074	Addressed an issue where the first 30 days was not displayed when searching the audit logs for a period longer than 30 days.
XCP-15096	Resolved an issue on the Alerts tab where the date and time selection reverts to the last 24 hours instead of the date and time range selected.

ExtremeCloud IQ (New) Public IP Address Blocks

Data Center	IP Block	Addresses and Ports
Global Data Center (CDC)	44.234.22.92/30 18.194.95.0/28 34.253.190.192/26 3.234.248.0/27	
Australia (AUS)	13.210.3.192/28 18.98.198.80/28	Firewall Address and Port Information
Azure, Canada Central (ACA)	20.151.64.48/28	Firewall Address and Port Information

Data Center	IP Block	Addresses and Ports
Azure, US East (AVA)	52.226.89.112/28	Firewall Address and Port Information
Brazil (BR)	18.228.70.16/28	Firewall Address and Port Information
Germany (FRA)	3.67.81.96/27 18.194.95.0/28	Firewall Address and Port Information
India (IN)	13.232.67.8/29 3.6.70.64/29	Firewall Address and Port Information
Ireland (IE)	34.253.190.192/26	Firewall Address and Port Information
Japan (JP)	18.176.203.112/29 13.231.6.232/29 57.181.58.0/28	Firewall Address and Port Information
Netherlands (NL-GCP)	34.91.82.64/27	Firewall Address and Port Information
Singapore (SG-GCP)	34.87.158.80/28	Firewall Address and Port Information
Spain (ES)	18.101.49.128/27	Firewall Address and Port Information
Sweden (SE)	13.48.186.224/29 13.48.4.184/29 13.48.4.240/28	Firewall Address and Port Information
Switzerland (ACH)	51.107.1.192/28	Firewall Address and Port Information
United Arab Emirates (UAE)	3.28.159.128/28	Firewall Address and Port Information
United Kingdom (UK-AGB)	51.143.233.80/28	Firewall Address and Port Information
US East (VA)	34.202.197.0/26 44.192.245.0/26 3.234.248.0/27	Firewall Address and Port Information
US East 2 (VA2)	34.202.197.0/26 44.192.245.0/26 3.234.248.0/27	Firewall Address and Port Information
US-Iowa (IA-GCP)	34.67.130.64/27	Firewall Address and Port Information
US Ohio (OH)	3.145.235.64/26	Firewall Address and Port Information

Supported IQ Engine Software

See the [IQ Engine Release Notes](#) for information about IQ Engine version 10.8.5.

Browser Support and Display Settings



Note

ExtremeCloud IQ (New) does not support 32-bit browsers.

Desktop Browsers

ExtremeCloud IQ (New) supports the latest 64-bit versions of the following desktop browsers:

- Chrome
- Edge
- Firefox
- Opera
- Safari

Microsoft Internet Explorer is not supported.

Display Settings

ExtremeCloud IQ (New) supports display resolutions of 1280 x 1024 or higher.



Previous Release

[New Features](#) on page 9

[Addressed Issues](#) on page 12

This section lists the new features, addressed issues, and known issues for the previous release.

New Features

[Table 3](#) on page 10 lists the new features introduced in ExtremeCloud IQ (New) 25.6.0-70.

Device OS Support

This release supports the following device operating systems.

Table 1: EXOS/Switch Engine Support Matrix

ExtremeCloud IQ Release 25.4.0	Version	Hardware/Model	ExtremeCloud IQ Onboard / Monitor / Config / Local Image Mgmt	Global Download Image
IQAgent Version	0.9.22/1.9.22 (0.9.22 for NOS versions <= 33.2 1.9.22 for NOS versions >= 33.2)			
	—	5120 Universal HW	✓	—
	—	5320-16P-2MXT-2X Universal HW	✓	—
Latest Supported GA Patch	32.7.2.19-patch1-32	—	✓	✓
Latest Supported GA Image	33.3 GA	X465	✓	✓

Table 1: EXOS/Switch Engine Support Matrix (continued)

ExtremeCloud IQ Release 25.4.0	Version	Hardware/Model	ExtremeCloud IQ Onboard / Monitor / Config / Local Image Mgmt	Global Download Image
Previous Supported GA Patch	31.7.4.2 GA	—	—	✓
Previous Supported GA Image	33.3.1.12	—	✓	✓

Table 2: VOSS Fabric Engine Support Matrix

ExtremeCloud IQ Release 25.4.0	Version	Hardware Model	ExtremeCloud IQ Onboard / Monitor / Config / Local Image Mgmt	Global Download Image
IQAgent Version	9.2.25			
Latest Supported GA Patch	9.2.0	—	✓	✓
Previous Supported GA Patch	9.1.1	—	✓	✓
Previous Supported GA Image	8.10.7	—	✓	✓

IQ Engine

- IQ Engine 10.8.5

New Hardware Support

No new hardware in this release.

Table 3: New Features in release 25.6.0-70

Feature ID	New Feature	Description
XIQ-46592	ExtremeCloud IQ AirDefense Support	ExtremeCloud IQ supports AirDefense on Prem (ADSP) for AP5020.
XIQ-45873	MLO Configuration Beta Label	Added Beta label to the Multi-Link Operation (MLO) enablement button in SSID configuration to indicate feature limitations in the 25.6 release.
XIQ-45850	Fabric Engine/VOSS 9.3.1 Support	Added support for Fabric Engine 9.3.1 to enable onboarding, monitoring, configuration, and drag-and-drop image management for VOSS XIQ supported SKUs including Universal switches, VSP7400, and VSP4900.

Table 3: New Features in release 25.6.0-70 (continued)

Feature ID	New Feature	Description
XIQ-45847	Fabric Engine/VOSS 8.10.9 Support	Added support for Fabric Engine 8.10.9 to enable onboarding, monitoring, configuration, and drag-and-drop image management for XA1400 switches.
XIQ-43683	Case Insensitive User Name Formatting	Implemented case-insensitive username validation across all user types including local PPSK, cloud PPSK, local RADIUS, and cloud RADIUS to prevent duplicate entries and configuration conflicts.
XIQ-41933	AP5020 WiFi Mesh Support	Added WiFi mesh and wireless bridging support for AP5020 including 6GHz band meshing between AP5020 units or with AP4000, as well as 2.4GHz and 5GHz band support.
XIQ-41840	Standards-Based GRE Failover	Implemented standards-based GRE tunnel failover mechanism allowing APs to automatically switch to secondary tunnel endpoints in different geographic locations for geographic redundancy.
XIQ-40618	EXOS/Switch Engine 33.5 GA Image Download	Added EXOS/Switch Engine 33.5 GA image download support for all EXOS/Switch Engine ExtremeCloud IQ supported SKUs as the latest image version.
XIQ-40617	EXOS/Switch Engine 33.5 Device Support	Added support for EXOS/Switch Engine 33.5 onboarding, monitoring, and configuration for all EXOS/Switch Engine ExtremeCloud IQ supported SKUs via local image management.
XIQ-40599	Multiple Fabric Engine/VOSS Version Support	Added support for multiple VOSS/Fabric Engine versions including 9.3.1, 9.2.2, and 8.10.9 for onboarding, monitoring, configuration, and download image capabilities across all supported Universal Switches.
XCP-12796	XIQ License Description Updates	Updated license descriptions for ExtremeCloud IQ Pilot, Navigator, and CoPilot subscriptions from "SaaS" to "Right-to-use" terminology.
NVO-10726	RBAC Visualization Access Control	Restricted external users with BizOps role from accessing the visualization page to ensure proper role-based access control.
NVO-9582	Unified Alert System	Implemented unified alert counting logic across Extreme Platform ONE Networking showing unacknowledged critical alerts from the last 24 hours in Geographical View, Physical View Quick Navigation, and Object Inspector.
NVO-9398	Wireless Floor Plan Observer Access	Added wireless floor plan loading capability for users assigned the Observer RBAC role to enable visualization access for read-only users.
NVO-8341	Object Inspector Diagnostics Navigation	Implemented navigation from Object Inspector Diagnostics widgets to Device 360 tabs for both wired and wireless devices, enabling quick access to detailed device information.

Table 3: New Features in release 25.6.0-70 (continued)

Feature ID	New Feature	Description
NVO-7887	Visualization Enhancements	Added Geographical View map controls including settings and search functionality, renamed Quick Sites Navigation to Quick Location Navigation , removed non-functional minimap, and renamed FloorPlan view to Heat Map view.
NVO-7215	VLAN Probe for Fabric Engine	Implemented VLAN Probe functionality through cloud workflow for Fabric Engine devices in the Object Inspector for Managed Switches.
NVO-6440	Fabric Engine 7830 Universal Switch Support	Added support for onboarding, monitoring, and configuration of Fabric Engine 7830 Universal switch including various VIM options, dual management ports, and Premier License support in Extreme Platform ONE Networking.
NVO-6019	Language Switcher Support	Implemented language switcher functionality for Visualization with translated error and success messages to support multiple languages across the platform.
NVO-5762	Managed AP Aggregation in Fabric View	Implemented visual aggregation of managed and discovered APs with Fabric Attach in Fabric Layer when aggregated in Physical layer to improve visualization clarity.
NVO-4524	SSH Launch Options	Added SSH shell launch options with auto-populated credentials for Managed Cloud-onboarded Fabric Engine and Switch Engine devices through the right-click menu in NVO.
NVO-4324	Service Canvas Movement	Enabled movement capability for the Service Canvas layer in the end-to-end view to allow users to view both Object Inspector and service layer content simultaneously.
HOS-24041	IQ Engine AirDefense Support	IQ Engine supports AirDefense on Prem (ADSP) for AP5020.

Addressed Issues

Table 4 lists Addressed Issues in ExtremeCloud IQ (New) release 25.6.0-70.

Table 4: Addressed Issues in release 25.6.0-70

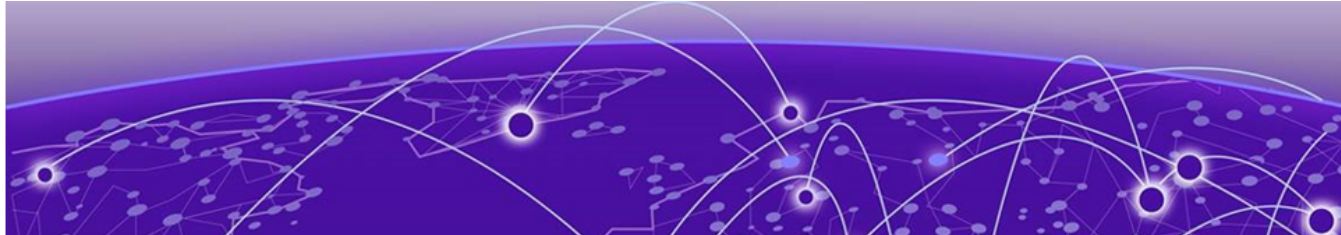
Issue ID	Description
Account Management	
WS-3535	Fixed an issue where the UI loaded data for the previously selected account briefly before displaying correct data when switching accounts in Extreme Platform ONE Networking.
WS-3415	Addressed the issue where logging out from Extreme Platform ONE Networking with multiple tabs open was slow and sometimes failed to automatically log out ExtremeCloud IQ tabs.

Table 4: Addressed Issues in release 25.6.0-70 (continued)

Issue ID	Description
WS-2789	Addressed the issue where backend verification was not performed when sending email notifications, allowing invalid data to be accepted and processed.
Browser Issues	
NVO-1308	Addressed the issue where pop-up windows for adding and deleting tags were not working in Safari browser.
NVO-6837	Fixed display issue where device icons were not properly centered in circles when using Firefox browser in Physical View .
Device Management	
XIQ-43050	Fixed an issue where Tunnel Concentrator services could not be configured under multiple network profiles, which prevented users from applying common TC services across different profiles as required.
XIQ-42997	Addressed the issue with AP4060/X configuration by adding Indoor/Outdoor mode selection and vertical/horizontal orientation options in Device360 and device templates.
XIQ-41718	Fixed an issue where universal ports on the 5120 switch could not be selected from the template wireframe for LAG creation, requiring users to manually add ports via the aggregate port button.
XIQ-41152	Fixed an issue where configuration pushes to Tunnel Concentrators were not automatically triggered when AP IP addresses changed due to AP or router power cycles, resulting in manual intervention requirements.
XIQ-27402	Fixed an issue by implementing WPA3-Enterprise 192-bit mode support for deployments requiring higher security standards in government, defense, and industrial environments.
XIQ-21339	Addressed the issue where ExtremeCloud IQ did not display an error when aggregation was enabled with rate-limit configuration, which caused configuration conflicts at the device level.
XIQ-19509	Fixed an issue where configuring eth0 interface with minimum speed and half duplex transmission caused APs to go offline and reboot, reverting the configuration back to full duplex.
XIQ-19498	Addressed the issue where changing the transmission type on AP5010 eth0 interface at maximum speed generated unexpected delta CLI for speed configuration.
XIQ-19368	Addressed the issue where UI overrides Supplemental CLI option was incorrectly pushing Supplemental CLI configuration instead of UI configuration for multicast rate-limit settings.
Licensing	

Table 4: Addressed Issues in release 25.6.0-70 (continued)

Issue ID	Description
XCP-11193	Addressed the issue where users were not redirected to Extreme Platform ONE Networking after linking a portal account with Extreme Platform ONE Networking licenses only on ExtremeCloud IQ , allowing unauthorized access to ExtremeCloud IQ features.
WS-3199	Fixed an issue where external users without licenses could access all Extreme Platform ONE Networking menu items after performing a browser refresh when switching to accounts without linked licenses.
User Interface	
XIQ-46181	Fixed an issue where the Applications tab in the Clients page displayed a 400 Bad Request error, preventing data from loading properly.
XIQ-45511	Addressed the issue where the Change Subscription Level menu option was deprecated and removed from the Network Devices Actions menu to align with the new Advanced and CoPilot subscription implementation.
XIQ-41416	Addressed the issue where LLDP neighbor System capabilities and Enabled capabilities data was not displayed in the ExtremeCloud IQ interface after APs reported this information.
XIQ-33709	Addressed the issue where multiple node alias entries were missing from ExtremeCloud IQ client pages while the device CLI displayed all entries correctly.
XIQ-19379	Fixed an issue where APs were occasionally not deleted from ExtremeCloud IQ when released to cloud from IQC in managed case scenarios.
XIQ-19320	Fixed an issue where WiFi interface transmission power values were not updated in the Managed Device page after bulk edit operations.
Visualize	
NVO-12162	Fixed an issue where mixed port speed LAG configuration was not blocked on the UI for FE7830 platforms, causing configuration push failures.
NVO-12147	Addressed the issue where Fabric Configuration on 7830-32CE-8DE was unable to configure redistribution for IP Shortcuts due to protocol IP version validation errors.
NVO-9346	Fixed an issue where wireless APs were missing from fabric view after fresh onboarding of FAProxy and wireless APs, requiring manual discovery initiation to display them.



Known Issues

Table 5 lists the Known Issues in ExtremeCloud IQ (New) release 25.6.1-75. Issues are grouped according to ID prefix and sorted within their group with the most recently logged issue listed first. (Issue IDs are in descending order.)

Table 5: Known Issues in release 25.6.1-75

Issue ID	Description
9-dot Menu	
XCP-3475, XCP-10803, XCP-11090	Accessing applications from the 9-dot menu fails with Internal Server Errors.
Account Management	
WS-775	The Verify Email option in the Account Lockout Notification email takes you to the ExtremeCloud IQ application.
WS-1916	Users with multiple accounts are unable to switch accounts or VIQs.
WS-3625	The account is listed incorrectly when switching from ExtremeCloud IQ to Extreme Platform ONE Networking.
XCP-15714	An error can occur when logging in to Extreme Platform ONE Networking using an external administrator account and accessing Extreme Platform ONE Security.
API	
XIQ-39330	The packet loss metric is incorrectly reported as a raw packet count rather than a percentage in both the API response and the user interface.
XCP-9613	DevX runtime performance dashboard development for API utilization, notifications, and ITSM sync.
XCP-12725	Internal Grafana-based runtime performance dashboard development for API and notification monitoring.
XCP-12727	API rate limiting implementation needed for customer accounts, users, and tokens with appropriate KPI tracking.
XCP-13136	External release type and release notes information is missing for cloud managed device upgrade/firmware versions API. This requires dependency resolution with IT services for complete implementation.
Browser Issues	
XIQ-44593	An issue exists where AFC Status and GEO Location widgets display visual artifacts when viewed on MacBook Pro using Safari browser.

Table 5: Known Issues in release 25.6.1-75 (continued)

Issue ID	Description
Device Management	
CFD-15358	When access points are physically disconnected, their previously associated clients continue to appear as connected.
XCP-5227, XCP-5268	Incorrect "Managed_by" value for locally managed devices.
XCP-12743	Bulk delete operations are limited to approximately 250-287 devices due to ExtremeCloud IQ API path parameter constraints. Larger bulk operations will require event-based design implementation for proper scaling.
XCP-13202	Security vulnerabilities are not displayed in the firmware upgrade flow for locally managed switches. Currently, locally managed devices are not in scope for PSIRTS vulnerability reporting.
XIQ-33498	An issue exists where client mode and backhaul mesh link options need to be disabled on AP5050U/D 6GHz FCC configurations to ensure proper regulatory compliance.
XIQ-34724	An issue exists where delta configuration push fails for AP5020 Wifi0 with dual 5G mode when 5G-Low channels are not supported in countries like Pakistan.
XIQ-46182	An issue exists where the EXOS/Switch Engine 31.7.4.2-patch1-7 cannot be onboarded, monitored, or configured through drag-and-drop image management for all EXOS/Switch Engine ExtremeCloud IQ supported SKUs.
Licensing	
XCP-11270	A user account with both Extreme Platform ONE Networking and ExtremeCloud IQ licenses is redirected to the ExtremeCloud IQ login page after login, instead of the expected Extreme Platform ONE Networking login page.
Logs	
XCP-11224	The Audit Log displays API denied error log entries, which are not relevant.
XCP-12694	The description in the Audit Log for deleting multiple devices from the account is not readable in the UI.
Onboarding	
XIQ-46495	The AP Installation height is displayed as 0 meters if the AP is onboarded from Extreme Platform ONE Networking. This is not an issue with Realtime maps.
Roles	
WS-3519	External users with the Bizops role have access to the Visualization page.
XCP-10308	Manage or Unmanage actions are not performed for the NetSecOps role.
XCP-13153	Existing RBAC roles (monitor and observer) are converted to tenant admin post GDC upgrade on staging environment.

Table 5: Known Issues in release 25.6.1-75 (continued)

Issue ID	Description
NVO-10726	An issue exists where external users with BizOps role have unauthorized access to the Visualization page despite role restrictions.
XIQ-45333	Manage/unmanage actions are not working for Extreme Platform ONE Networking BizOps role users, showing "something went wrong" error.
XIQ-45477	An issue exists where Extreme Platform ONE Networking NetSecOps role users with Write access to inventory cannot perform Manage/Unmanage actions, resulting in permission errors.
XIQ-46472, XIQ-46479	The device page displays Access Denied when an account with the Monitor role or an account with the Guest Management role logs in.
SSO	
XCP-8507	The login button does not activate for certain SSO-enabled user login instances.
Upgrading	
XCP-12604	An upgrade of an AP may fail when upgrading multiple APs due to the scheduled timeout.
XCP-12707	Individual level upgrade firmware screen does not display data properly once CVEs are expanded in the UI.
XCP-12883	There is an issue where the CVEs in the vulnerabilities column is not selectable when upgrading the firmware.
XCP-14211	In some instances the Firmware Version menu is not visible when upgrading the firmware.
User Interface	
WS-3120	Intermittent logins receive a white screen with an incomplete load of the application.
XCP-5065	Search and Filter does not filter the appliance cluster.
XCP-14930	Not all columns in PSIRTS can be displayed by scrolling horizontally after rearranging or moving columns.
XIQ-42050	An issue exists where FIPS enabled filter in Manage Application page displays all applications instead of filtering to show only FIPS-enabled applications.
XIQ-42051	An issue exists where FIPS enabled filter in Manage Summary widget shows inaccurate data for Top Application Groups , Top Usage , and Total Application Usage metrics.
XIQ-46203	On the Monitoring > Clients > Users tab, the Source value displays Other instead of Others.
XIQ-46206, XIQ-46418	Monitoring > Clients > Users : Filtering sessions by duration results in displaying all users regardless of the selected time range, and filtering sessions by an individual site shows zero results.
XIQ-46279	Data usage for user is inconsistent. Real-time data usage traffic fails to update after client reconnection, showing only historic usage instead of current traffic.

Table 5: Known Issues in release 25.6.1-75 (continued)

Issue ID	Description
XIQ-46302	The radio usage data may not appear on the Inspector tab.
XIQ-46469, XIQ-46474	Monitoring > Clients > Users: Sort functionality on Source , Status , and Session Duration columns is not working as expected.
XIQ-46511	Monitoring > Clients > Users: Custom Time filter is not displaying proper results. It displays incorrect user entries.
XIQ-46588	Monitoring > Clients > Users functionality is restricted to 200 entries. During scale testing with 500,000 users, the total count remains fixed at 200, and filter metadata XAPI fails with a 400 error.
XIQ-46637	The User tab returns a 400 error when no active clients are connected and only historic clients (older than 1 day) are present.
Visualize	
NVO-7899	Device action Configure Fabric needs to be restricted to Extreme Platform ONE Networking compatible buildings only.
NVO-8908	Node custom positions in topology are not retained on browser refresh.
NVO-9398	Some wireless floor plans not loading for Observer role users.
NVO-10726, WS-3519	External users with the Bizops role have access to the Visualization page.



Device Support Information

[Universal Compute Platform](#) on page 19

[Access Points](#) on page 19

[Switches](#) on page 21

This section lists the devices that ExtremeCloud IQ supports and includes the latest version of the software that each device supports.



Note

Site-Engine managed devices that are connected to ExtremeCloud IQ are unsupported in ExtremeCloud IQ (New).

Universal Compute Platform

Device Model	Latest Supported Release	Comments
ExtremeCloud Edge (UCP)	5.12.01	1130C 2130C 3150C 3160C 4120C

Access Points

Access Point information is provided in the following sections:

- [Universal Hardware](#) on page 20
- [IQ Engine \(Cloud Native\)](#) on page 21

Universal Hardware

Device Model	Latest Supported Release	Comments
AP302W	IQ Engine 10.8.4 WiNG OS 7.9.6.1 AP 10.15.1	Platform support introduced with IQ Engine 10.3.1
AP305C	IQ Engine 10.8.4 WiNG OS 7.9.6.1 AP 10.15.1	Platform support introduced with IQ Engine 10.1.1
AP305C-1	IQ Engine 10.8.4 WiNG OS 7.9.6.1 AP 10.15.1	Platform support introduced with IQ Engine 10.4.6
AP305CX	IQ Engine 10.8.4 WiNG OS 7.9.6.1 AP 10.15.1	Platform support introduced with IQ Engine 10.1.1
AP3000	IQ Engine 10.8.4 AP 10.15.1	Platform support introduced with IQ engine 10.6.1
AP3000X	IQ Engine 10.8.4	Platform support introduced with IQ Engine 10.6.1
AP4000	IQ Engine 10.8.4 AP 10.15.1	Platform support introduced with IQ Engine 10.4.1
AP4000-1	IQ Engine 10.8.4 AP 10.15.1	Platform support introduced with IQ Engine 10.4.2
AP4020	IQ Engine 10.8.4	Platform support introduced with IQ Engine 10.8.1
AP410C	IQ Engine 10.8.4 WiNG OS 7.9.6.1 AP 10.15.1	Platform support introduced with IQ Engine 10.1.2
AP410C-1	IQ Engine 10.8.4 WiNG OS 7.9.6.1 AP 10.15.1	Platform support introduced with IQ Engine 10.4.6
AP460C	IQ Engine 10.8.4 WiNG OS 7.9.6.1 AP 10.15.1	Platform support introduced with IQ Engine 10.1.2
AP460S6C	IQ Engine 10.8.3 WiNG OS 7.9.6.1 AP 10.14.1	Platform support introduced with IQ Engine 10.1.2
AP460S12C	IQ Engine 10.8.4 WiNG OS 7.9.6.1 AP 10.15.1	Platform support introduced with IQ Engine 10.1.2

Device Model	Latest Supported Release	Comments
AP5010	IQ Engine 10.8.4 WiNG OS 7.9.6.1 AP 10.15.1	Platform support introduced with IQ Engine 10.5.1
AP5020	IQ Engine 10.8.4 AP 10.15.1	Platform support introduced with IQ Engine 10.7.2
AP5050U	IQ Engine 10.8.4 AP 10.15.1	Platform support introduced with IQ Engine 10.5.3
AP5050D	IQ Engine 10.8.4 AP 10.15.1	Platform support introduced with IQ Engine 10.5.3
AP510C/CX	IQ Engine 10.8.4	Platform support introduced with IQ Engine 10.0.8

IQ Engine (Cloud Native)

Device Model	Latest Supported Release	Comments
AP630	IQ Engine 10.8.5	Platform support introduced with IQ Engine 10.0.1. End of Life Information
AP650	IQ Engine 10.8.5	Platform support introduced with IQ Engine 10.0.1. End of Life Information
AP650X	IQ Engine 10.8.5	Platform support introduced with IQ Engine 10.0.1. End of Life Information
AP1130	IQ Engine 10.6.1a	Platform support introduced with IQ Engine 8.2.1. End of Life Information
AP250	IQ Engine 10.6.1a	Platform support introduced with IQ Engine 7.0.2.
AP230	IQ Engine 10.6.1a	Platform support introduced with IQ Engine 8.2.1. End of Life Information
AP150W	IQ Engine 10.6.1a	Platform support introduced with IQ Engine 8.1.1. End of Life Information
AP130	IQ Engine 10.6.1a	Platform support introduced with IQ Engine 8.2.1. End of Life Information
AP122	IQ Engine 10.6.1a	Platform support introduced with IQ Engine 7.0.4.
Atom AP30	IQ Engine 10.6.1a	Platform support introduced with IQ Engine 8.3.2. End of Life Information

Switches

Switch information is provided in the following sections:

- [Universal Hardware](#) on page 23

- [ExtremeXOS](#) on page 42
- [VOSS](#) on page 46

For the latest release notes for Fabric Engine and Switch Engine , see the [Extreme Networks Documentation Site](#).

Universal Hardware

Device Model	Latest Supported Release	Standalone Support	Stack Support
4120-24MW-4Y	Switch Engine 33.3	<ul style="list-style-type: none"> Onboard Monitor Template- and device-level configuration SSH Proxy* Supplemental CLI* <p>Note: Pilot license required to configure advanced features.</p>	<ul style="list-style-type: none"> Onboard Monitor Template- and device-level configuration SSH Proxy* Up to 8 unit stacking 200Gb stacking through two built-in QSFP28 ports <p>Note: Can only stack with other 4120 devices. Cross stacking between 4120 and 4220 is not supported. Cross stacking between 4000 and 5000 is not supported.</p>
4120-48MW-4Y	Switch Engine 33.3	<ul style="list-style-type: none"> Onboard Monitor Template- and device-level configuration SSH Proxy* Supplemental CLI* <p>Note: Pilot license required to configure advanced features.</p>	<ul style="list-style-type: none"> Onboard Monitor Template- and device-level configuration SSH Proxy* Up to 8 unit stacking 200Gb stacking through two built-in QSFP28 ports <p>Note: Can only stack with other 4120 devices. Cross stacking between 4120 and 4220 is not supported. Cross stacking between 4000 and 5000 is not supported.</p>

Device Model	Latest Supported Release	Standalone Support	Stack Support
4120-Series-Stack	Switch Engine 33.3	<ul style="list-style-type: none"> Onboard Monitor Template- and device-level configuration SSH Proxy* Supplemental CLI* <p>Note: Pilot license required to configure advanced features.</p>	<ul style="list-style-type: none"> Onboard Monitor Template- and device-level configuration SSH Proxy* Up to 8 unit stacking 200Gb stacking through two built-in QSFP28 ports <p>Note: Can only stack with other 4120 devices. Cross stacking between 4120 and 4220 is not supported. Cross stacking between 4000 and 5000 is not supported.</p>
4220-12P-4X	Switch Engine 33.3	<p>Switch Engine:</p> <ul style="list-style-type: none"> Onboard Monitor Template- and device-level configuration SSH Proxy* Supplemental CLI* <p>Fabric Engine: Monitor</p> <p>Note: Pilot license required to configure advanced features.</p>	<ul style="list-style-type: none"> Onboard Monitor Template- and device-level configuration SSH Proxy* Up to 8 unit stacking 40Gb stacking through two built-in SFP+ uplink ports <p>Note: Can only stack with other 4220 devices. Cross stacking between 4120 and 4220 is not supported. Cross stacking between 4000 and 5000 is not supported.</p>

Device Model	Latest Supported Release	Standalone Support	Stack Support
4220-12T-4X	Switch Engine 33.3	Switch Engine: <ul style="list-style-type: none"> Onboard Monitor Template- and device-level configuration SSH Proxy* Supplemental CLI* Fabric Engine: Monitor Note: Pilot license required to configure advanced features.	<ul style="list-style-type: none"> Onboard Monitor Template- and device-level configuration SSH Proxy* Up to 8 unit stacking 40Gb stacking through two built-in SFP+ uplink ports Note: Can only stack with other 4220 devices. Cross stacking between 4120 and 4220 is not supported. Cross stacking between 4000 and 5000 is not supported.
4220-24P-4X	Switch Engine 33.3	Switch Engine: <ul style="list-style-type: none"> Onboard Monitor Template- and device-level configuration SSH Proxy* Supplemental CLI* Fabric Engine: Monitor Note: Pilot license required to configure advanced features.	<ul style="list-style-type: none"> Onboard Monitor Template- and device-level configuration SSH Proxy* Up to 8 unit stacking 40Gb stacking through two built-in SFP+ uplink ports Note: Can only stack with other 4220 devices. Cross stacking between 4120 and 4220 is not supported. Cross stacking between 4000 and 5000 is not supported.

Device Model	Latest Supported Release	Standalone Support	Stack Support
4220-24T-4X	Switch Engine 33.3	Switch Engine: <ul style="list-style-type: none"> Onboard Monitor Template- and device-level configuration SSH Proxy* Supplemental CLI* Fabric Engine: Device-level Configuration Note: Pilot license required to configure advanced features.	<ul style="list-style-type: none"> Onboard Monitor Template- and device-level configuration SSH Proxy* Up to 8 unit stacking 40Gb stacking through two built-in SFP+ uplink ports Note: Can only stack with other 4220 devices. Cross stacking between 4120 and 4220 is not supported. Cross stacking between 4000 and 5000 is not supported.
4220-48P-4X	Switch Engine 33.3	<ul style="list-style-type: none"> Onboard Monitor Template- and device-level configuration SSH Proxy* Supplemental CLI* Note: Pilot license required to configure advanced features.	<ul style="list-style-type: none"> Onboard Monitor Template- and device-level configuration SSH Proxy* Up to 8 unit stacking 40Gb stacking through two built-in SFP+ uplink ports Note: Can only stack with other 4220 devices. Cross stacking between 4120 and 4220 is not supported. Cross stacking between 4000 and 5000 is not supported.

Device Model	Latest Supported Release	Standalone Support	Stack Support
4220-48T-4X	Switch Engine 33.3	<ul style="list-style-type: none"> Onboard Monitor Template- and device-level configuration SSH Proxy* Supplemental CLI* <p>Note: Pilot license required to configure advanced features.</p>	<ul style="list-style-type: none"> Onboard Monitor Template- and device-level configuration SSH Proxy* Up to 8 unit stacking 40Gb stacking through two built-in SFP+ uplink ports <p>Note: Can only stack with other 4220 devices. Cross stacking between 4120 and 4220 is not supported. Cross stacking between 4000 and 5000 is not supported.</p>
4220-4MW-20P-4X	Switch Engine 33.3	<p>Switch Engine:</p> <ul style="list-style-type: none"> Onboard Monitor Template- and device-level configuration SSH Proxy* Supplemental CLI* <p>Fabric Engine: Device-level Configuration</p> <p>Note: Pilot license required to configure advanced features.</p>	<ul style="list-style-type: none"> Onboard Monitor Template- and device-level configuration SSH Proxy* Up to 8 unit stacking 40Gb stacking through two built-in SFP+ uplink ports <p>Note: Can only stack with other 4220 devices. Cross stacking between 4120 and 4220 is not supported. Cross stacking between 4000 and 5000 is not supported.</p>

Device Model	Latest Supported Release	Standalone Support	Stack Support
4220-4MW-8P-4X	Switch Engine 33.3	Switch Engine: <ul style="list-style-type: none"> Onboard Monitor Template- and device-level configuration SSH Proxy* Supplemental CLI* Fabric Engine: Device-level Configuration Note: Pilot license required to configure advanced features.	<ul style="list-style-type: none"> Onboard Monitor Template- and device-level configuration SSH Proxy* Up to 8 unit stacking 40Gb stacking through two built-in SFP+ uplink ports Note: Can only stack with other 4220 devices. Cross stacking between 4120 and 4220 is not supported. Cross stacking between 4000 and 5000 is not supported.
4220-8MW-40P-4X	Switch Engine 33.3	Switch Engine: <ul style="list-style-type: none"> Onboard Monitor Template- and device-level configuration SSH Proxy* Supplemental CLI* Fabric Engine: Device-level Configuration Note: Pilot license required to configure advanced features.	<ul style="list-style-type: none"> Onboard Monitor Template- and device-level configuration SSH Proxy* Up to 8 unit stacking 40Gb stacking through two built-in SFP+ uplink ports Note: Can only stack with other 4220 devices. Cross stacking between 4120 and 4220 is not supported. Cross stacking between 4000 and 5000 is not supported.

Device Model	Latest Supported Release	Standalone Support	Stack Support
4220-8X	Switch Engine 33.3	Switch Engine: <ul style="list-style-type: none"> Onboard Monitor Template- and device-level configuration SSH Proxy* Supplemental CLI* Fabric Engine: Device-level Configuration Note: Pilot license required to configure advanced features.	<ul style="list-style-type: none"> Onboard Monitor Template- and device-level configuration SSH Proxy* Up to 8 unit stacking 40Gb stacking through two built-in SFP+ uplink ports Note: Can only stack with other 4220 devices. Cross stacking between 4120 and 4220 is not supported. Cross stacking between 4000 and 5000 is not supported.
4220-Series-Stack	Switch Engine 33.3	<ul style="list-style-type: none"> Onboard Monitor Template- and device-level configuration SSH Proxy* Supplemental CLI* Note: Pilot license required to configure advanced features.	<ul style="list-style-type: none"> Onboard Monitor Template- and device-level configuration SSH Proxy* Up to 8 unit stacking 40Gb stacking through two built-in SFP+ uplink ports Note: Can only stack with other 4220 devices. Cross stacking between 4120 and 4220 is not supported. Cross stacking between 4000 and 5000 is not supported.

Device Model	Latest Supported Release	Standalone Support	Stack Support
5120-24X-4Y	Switch Engine 33.3	<ul style="list-style-type: none"> Onboard Monitor Template- and device-level configuration SSH Proxy* Supplemental CLI* <p>Note: Pilot license required to configure advanced features.</p>	<ul style="list-style-type: none"> Onboard Monitor Template- and device-level configuration SSH Proxy* Up to 8 unit stacking Ability to toggle universal ports from stacking-support enabled to stacking-support disabled Two QSFP28 uplink ports that can operate at 1x100G, 4x10G, or 4x25G <p>Note: Can only stack with other 5120 devices. Cross stacking between 4000 and 5000 is not supported.</p>
5120-24XT-4Y	Switch Engine 33.3	<ul style="list-style-type: none"> Onboard Monitor Template- and device-level configuration SSH Proxy* Supplemental CLI* <p>Note: Pilot license required to configure advanced features.</p>	<ul style="list-style-type: none"> Onboard Monitor Template- and device-level configuration SSH Proxy* Up to 8 unit stacking Ability to toggle universal ports from stacking-support enabled to stacking-support disabled Two QSFP28 uplink ports that can operate at 1x100G, 4x10G, or 4x25G <p>Note: Can only stack with other 5120 devices. Cross stacking between 4000 and 5000 is not supported.</p>

Device Model	Latest Supported Release	Standalone Support	Stack Support
5120-44X-4Y-2C	Switch Engine 33.3	<ul style="list-style-type: none"> Onboard Monitor Template- and device-level configuration SSH Proxy* Supplemental CLI* <p>Note: Pilot license required to configure advanced features.</p>	<ul style="list-style-type: none"> Onboard Monitor Template- and device-level configuration SSH Proxy* Up to 8 unit stacking Ability to toggle universal ports from stacking-support enabled to stacking-support disabled Two QSFP28 uplink ports that can operate at 1x100G, 4x10G, or 4x25G <p>Note: Can only stack with other 5120 devices. Cross stacking between 4000 and 5000 is not supported.</p>
5120-Series-Stack	Switch Engine 33.3	<ul style="list-style-type: none"> Onboard Monitor Template- and device-level configuration SSH Proxy* Supplemental CLI* <p>Note: Pilot license required to configure advanced features.</p>	<ul style="list-style-type: none"> Onboard Monitor Template- and device-level configuration SSH Proxy* Up to 8 unit stacking Ability to toggle universal ports from stacking-support enabled to stacking-support disabled Two QSFP28 uplink ports that can operate at 1x100G, 4x10G, or 4x25G <p>Note: Can only stack with other 5120 devices. Cross stacking between 4000 and 5000 is not supported.</p>

Device Model	Latest Supported Release	Standalone Support	Stack Support
5320-16P-4XE	Switch Engine 33.3 Fabric Engine 9.3	<ul style="list-style-type: none"> Monitor Template- and device-level configuration SSH Proxy* Supplemental CLI* <p>Note: Fabric Engine only supports device-level configuration.</p>	<p>Switch Engine:</p> <ul style="list-style-type: none"> Monitor Template- and device-level configuration SSH Proxy <p>Note: Cross stacking between 4000 and 5000 is not supported.</p>
5320-16P-4XE-DC	Switch Engine 33.3 Fabric Engine 9.3	<ul style="list-style-type: none"> Monitor Template- and device-level configuration SSH Proxy* Supplemental CLI* <p>Note: Fabric Engine only supports device-level configuration.</p>	<p>Switch Engine:</p> <ul style="list-style-type: none"> Monitor Template- and device-level configuration SSH Proxy <p>Note: Cross stacking between 4000 and 5000 is not supported.</p>
5320-24T-8XE	Switch Engine 33.3 Fabric Engine 9.3	<ul style="list-style-type: none"> Monitor Template- and device-level configuration SSH Proxy* Supplemental CLI* <p>Note: Fabric Engine only supports device-level configuration.</p>	<ul style="list-style-type: none"> Monitor Template- and device-level configuration SSH Proxy <p>Note: Cross stacking between 4000 and 5000 is not supported.</p>
5320-24P-8XE	Switch Engine 33.3 Fabric Engine 9.3	<ul style="list-style-type: none"> Monitor Template- and device-level configuration SSH Proxy* Supplemental CLI* <p>Note: Fabric Engine only supports device-level configuration.</p>	<ul style="list-style-type: none"> Monitor Template- and device-level configuration SSH Proxy <p>Note: Cross stacking between 4000 and 5000 is not supported.</p>

Device Model	Latest Supported Release	Standalone Support	Stack Support
5320-48T-8XE	Switch Engine 33.3 Fabric Engine 9.3	<ul style="list-style-type: none"> • Monitor • Template- and device-level configuration • SSH Proxy* • Supplemental CLI* <p>Note: Fabric Engine only supports device-level configuration.</p>	<ul style="list-style-type: none"> • Monitor • Template- and device-level configuration • SSH Proxy <p>Note: Cross stacking between 4000 and 5000 is not supported.</p>
5320-48P-8XE	Switch Engine 33.3 Fabric Engine 9.3	<ul style="list-style-type: none"> • Monitor • Template- and device-level configuration • SSH Proxy* • Supplemental CLI* <p>Note: Fabric Engine only supports device-level configuration.</p>	<ul style="list-style-type: none"> • Monitor • Template- and device-level configuration • SSH Proxy <p>Note: Cross stacking between 4000 and 5000 is not supported.</p>
5420F-24T-4XE	Switch Engine 33.3 Fabric Engine 9.3	<ul style="list-style-type: none"> • Monitor • Template- and device-level configuration • SSH Proxy* • Supplemental CLI* <p>Note: Fabric Engine only supports device-level configuration.</p>	<ul style="list-style-type: none"> • Monitor • Template- and device-level configuration • SSH Proxy <p>Note: Cross stacking between 4000 and 5000 is not supported.</p>
5420F-24P-4XE	Switch Engine 33.3 Fabric Engine 9.3	<ul style="list-style-type: none"> • Monitor • Template- and device-level configuration • SSH Proxy* • Supplemental CLI* <p>Note: Fabric Engine only supports device-level configuration.</p>	<ul style="list-style-type: none"> • Monitor • Template- and device-level configuration • SSH Proxy <p>Note: Cross stacking between 4000 and 5000 is not supported.</p>

Device Model	Latest Supported Release	Standalone Support	Stack Support
5420F-24S-4XE	Switch Engine 33.3 Fabric Engine 9.3	<ul style="list-style-type: none"> • Monitor • Template- and device-level configuration • SSH Proxy* • Supplemental CLI* 	<ul style="list-style-type: none"> • Monitor • Template- and device-level configuration • SSH Proxy <p>Note: Cross stacking between 4000 and 5000 is not supported.</p>
5420F-48T-4XE	Switch Engine 33.3 Fabric Engine 9.3	<ul style="list-style-type: none"> • Monitor • Template- and device-level configuration • SSH Proxy* • Supplemental CLI* <p>Note: Fabric Engine only supports device-level configuration.</p>	<ul style="list-style-type: none"> • Monitor • Template- and device-level configuration • SSH Proxy <p>Note: Cross stacking between 4000 and 5000 is not supported.</p>
5420F-48P-4XE	Switch Engine 33.3 Fabric Engine 9.3	<ul style="list-style-type: none"> • Monitor • Template- and device-level configuration • SSH Proxy* • Supplemental CLI* <p>Note: Fabric Engine only supports device-level configuration.</p>	<ul style="list-style-type: none"> • Monitor • Template- and device-level configuration • SSH Proxy <p>Note: Cross stacking between 4000 and 5000 is not supported.</p>
5420F-48P-4XL	Switch Engine 33.3 Fabric Engine 9.3	<ul style="list-style-type: none"> • Monitor • Template- and device-level configuration • SSH Proxy* • Supplemental CLI* <p>Note: Fabric Engine only supports device-level configuration.</p>	<ul style="list-style-type: none"> • Monitor • Template- and device-level configuration • SSH Proxy

Device Model	Latest Supported Release	Standalone Support	Stack Support
5420F-8W-16P-4XE	Switch Engine 33.3 Fabric Engine 9.3	<ul style="list-style-type: none"> • Monitor • Template- and device-level configuration • SSH Proxy* • Supplemental CLI* <p>Note: Fabric Engine only supports device-level configuration.</p>	<ul style="list-style-type: none"> • Monitor • Template- and device-level configuration • SSH Proxy <p>Note: Cross stacking between 4000 and 5000 is not supported.</p>
5420F-16W-32P-4XE	Switch Engine 33.3 Fabric Engine 9.3	<ul style="list-style-type: none"> • Monitor • Template- and device-level configuration • SSH Proxy* • Supplemental CLI* <p>Note: Fabric Engine only supports device-level configuration.</p>	<ul style="list-style-type: none"> • Monitor • Template- and device-level configuration • SSH Proxy <p>Note: Cross stacking between 4000 and 5000 is not supported.</p>
5420F-16MW-32P-4XE	Switch Engine 33.3 Fabric Engine 9.3	<ul style="list-style-type: none"> • Monitor • Template- and device-level configuration • SSH Proxy* • Supplemental CLI* 	<ul style="list-style-type: none"> • Monitor • Template- and device-level configuration • SSH Proxy <p>Note: Cross stacking between 4000 and 5000 is not supported.</p>
5420M-24T-4YE	Switch Engine 33.3 Fabric Engine 9.3	<ul style="list-style-type: none"> • Monitor • Template- and device-level configuration • SSH Proxy* • Supplemental CLI* <p>Note: Fabric Engine only supports device-level configuration.</p>	<ul style="list-style-type: none"> • Monitor • Template- and device-level configuration • SSH Proxy <p>Note: Cross stacking between 4000 and 5000 is not supported.</p>

Device Model	Latest Supported Release	Standalone Support	Stack Support
5420M-24W-4YE	Switch Engine 33.3 Fabric Engine 9.3	<ul style="list-style-type: none"> • Monitor • Template- and device-level configuration • SSH Proxy* • Supplemental CLI* Note: Fabric Engine only supports device-level configuration.	<ul style="list-style-type: none"> • Monitor • Template- and device-level configuration • SSH Proxy Note: Cross stacking between 4000 and 5000 is not supported.
5420M-48T-4YE	Switch Engine 33.3 Fabric Engine 9.3	<ul style="list-style-type: none"> • Monitor • Template- and device-level configuration • SSH Proxy* • Supplemental CLI* Note: Fabric Engine only supports device-level configuration.	<ul style="list-style-type: none"> • Monitor • Template- and device-level configuration • SSH Proxy Note: Cross stacking between 4000 and 5000 is not supported.
5420M-48W-4YE	Switch Engine 33.3 Fabric Engine 9.3	<ul style="list-style-type: none"> • Monitor • Template- and device-level configuration • SSH Proxy* • Supplemental CLI* Note: Fabric Engine only supports device-level configuration.	<ul style="list-style-type: none"> • Monitor • Template- and device-level configuration • SSH Proxy Note: Cross stacking between 4000 and 5000 is not supported.
5420M-16MW-32P-4YE	Switch Engine 33.3 Fabric Engine 9.3	<ul style="list-style-type: none"> • Monitor • Template- and device-level configuration • SSH Proxy* • Supplemental CLI* Note: Fabric Engine only supports device-level configuration.	<ul style="list-style-type: none"> • Monitor • Template- and device-level configuration • SSH Proxy Note: Cross stacking between 4000 and 5000 is not supported.

Device Model	Latest Supported Release	Standalone Support	Stack Support
5520-24W	Switch Engine 33.3 Fabric Engine 9.3	<ul style="list-style-type: none"> • Monitor • Template- and device-level configuration • SSH Proxy* • Supplemental CLI* <p>Note: Fabric Engine only supports device-level configuration.</p>	<ul style="list-style-type: none"> • Monitor • Template- and device-level configuration • SSH Proxy <p>Note: Cross stacking between 4000 and 5000 is not supported.</p>
5520-24T	Switch Engine 33.3 Fabric Engine 9.3	<ul style="list-style-type: none"> • Monitor • Template- and device-level configuration • SSH Proxy* • Supplemental CLI* <p>Note: Fabric Engine only supports device-level configuration.</p>	<ul style="list-style-type: none"> • Monitor • Template- and device-level configuration • SSH Proxy <p>Note: Cross stacking between 4000 and 5000 is not supported.</p>
5520-24T-ACDC	Switch Engine 33.3 Fabric Engine 9.3	<ul style="list-style-type: none"> • Monitor • Template- and device-level configuration • SSH Proxy* • Supplemental CLI* <p>Note: Fabric Engine only supports device-level configuration.</p>	<p>Switch Engine:</p> <ul style="list-style-type: none"> • Monitor • Template- and device-level configuration • SSH Proxy <p>Note: Cross stacking between 4000 and 5000 is not supported.</p>
5520-24X-ACDC	Switch Engine 33.3 Fabric Engine 9.3	<ul style="list-style-type: none"> • Monitor • Template- and device-level configuration • SSH Proxy* • Supplemental CLI* <p>Note: Fabric Engine only supports device-level configuration.</p>	<p>Switch Engine:</p> <ul style="list-style-type: none"> • Monitor • Template- and device-level configuration • SSH Proxy <p>Note: Cross stacking between 4000 and 5000 is not supported.</p>

Device Model	Latest Supported Release	Standalone Support	Stack Support
5520-48W	Switch Engine 33.3 Fabric Engine 9.3	<ul style="list-style-type: none"> • Monitor • Template- and device-level configuration • SSH Proxy* • Supplemental CLI* <p>Note: Fabric Engine only supports device-level configuration.</p>	<ul style="list-style-type: none"> • Monitor • Template- and device-level configuration • SSH Proxy <p>Note: Cross stacking between 4000 and 5000 is not supported.</p>
5520-48T	Switch Engine 33.3 Fabric Engine 9.3	<ul style="list-style-type: none"> • Monitor • Template- and device-level configuration • SSH Proxy* • Supplemental CLI* <p>Note: Fabric Engine only supports device-level configuration.</p>	<ul style="list-style-type: none"> • Monitor • Template- and device-level configuration • SSH Proxy <p>Note: Cross stacking between 4000 and 5000 is not supported.</p>
5520-48T-ACDC	Switch Engine 33.3 Fabric Engine 9.3	<ul style="list-style-type: none"> • Monitor • Template- and device-level configuration • SSH Proxy* • Supplemental CLI* <p>Note: Fabric Engine only supports device-level configuration.</p>	<ul style="list-style-type: none"> • Monitor • Template- and device-level configuration • SSH Proxy <p>Note: Cross stacking between 4000 and 5000 is not supported.</p>
5520-12MW-36W	Switch Engine 33.3 Fabric Engine 9.3	<ul style="list-style-type: none"> • Monitor • Template- and device-level configuration • SSH Proxy* • Supplemental CLI* <p>Note: Fabric Engine only supports device-level configuration.</p>	<ul style="list-style-type: none"> • Monitor • Template- and device-level configuration • SSH Proxy <p>Note: Cross stacking between 4000 and 5000 is not supported.</p>

Device Model	Latest Supported Release	Standalone Support	Stack Support
5520-48SE	Switch Engine 33.3 Fabric Engine 9.3	<ul style="list-style-type: none"> • Monitor • Template- and device-level configuration • SSH Proxy* • Supplemental CLI* <p>Note: Fabric Engine only supports device-level configuration.</p>	<ul style="list-style-type: none"> • Monitor • Template- and device-level configuration • SSH Proxy <p>Note: Cross stacking between 4000 and 5000 is not supported.</p>
5520-48SE-ACDC	Switch Engine 33.3 Fabric Engine 9.3	<ul style="list-style-type: none"> • Monitor • Template- and device-level configuration • SSH Proxy* • Supplemental CLI* <p>Note: Fabric Engine only supports device-level configuration.</p>	<ul style="list-style-type: none"> • Monitor • Template- and device-level configuration • SSH Proxy <p>Note: Cross stacking between 4000 and 5000 is not supported.</p>
5520-24X	Switch Engine 33.3 Fabric Engine 9.3	<ul style="list-style-type: none"> • Monitor • Template- and device-level configuration • SSH Proxy* • Supplemental CLI* <p>Note: Fabric Engine only supports device-level configuration.</p>	<p>Switch Engine:</p> <ul style="list-style-type: none"> • Monitor • Template- and device-level configuration • SSH Proxy <p>Note: Cross stacking between 4000 and 5000 is not supported.</p>
5720-24MW	Switch Engine 33.3 Fabric Engine 9.3	<ul style="list-style-type: none"> • Monitor • Template- and device-level configuration • SSH Proxy* • Supplemental CLI* <p>Note: Fabric Engine only supports device-level configuration.</p>	<p>Switch Engine:</p> <ul style="list-style-type: none"> • Monitor • Template- and device-level configuration • SSH Proxy <p>Note: Cross stacking between 4000 and 5000 is not supported.</p>

Device Model	Latest Supported Release	Standalone Support	Stack Support
5720-48MW	Switch Engine 33.3 Fabric Engine 9.3	<ul style="list-style-type: none"> Monitor Template- and device-level configuration SSH Proxy* Supplemental CLI* <p>Note: Fabric Engine only supports device-level configuration.</p>	<p>Switch Engine:</p> <ul style="list-style-type: none"> Monitor Template- and device-level configuration SSH Proxy <p>Note: Cross stacking between 4000 and 5000 is not supported.</p>
5720-24MXW	Switch Engine 33.3 Fabric Engine 9.3	<ul style="list-style-type: none"> Monitor Template- and device-level configuration SSH Proxy* Supplemental CLI* <p>Note: Fabric Engine only supports device-level configuration.</p>	<p>Switch Engine:</p> <ul style="list-style-type: none"> Monitor Template- and device-level configuration SSH Proxy <p>Note: Cross stacking between 4000 and 5000 is not supported.</p>
5720-48MXW	Switch Engine 33.3 Fabric Engine 9.3	<ul style="list-style-type: none"> Monitor Template- and device-level configuration SSH Proxy* Supplemental CLI* <p>Note: Fabric Engine only supports device-level configuration.</p>	<p>Switch Engine:</p> <ul style="list-style-type: none"> Monitor Template- and device-level configuration SSH Proxy <p>Note: Cross stacking between 4000 and 5000 is not supported.</p>
7520-48Y	Switch Engine 33.3 Fabric Engine 9.3	<p>Switch Engine:</p> <ul style="list-style-type: none"> Monitor Template- and device-level configuration SSH Proxy* Supplemental CLI* <p>Fabric Engine: Device-level Configuration</p>	<p>Switch Engine:</p> <ul style="list-style-type: none"> Monitor Template- and device-level configuration SSH Proxy <p>Note: Cross stacking between 4000 and 5000 is not supported.</p>

Device Model	Latest Supported Release	Standalone Support	Stack Support
7520-48YE	Switch Engine 33.3 Fabric Engine 9.3	Switch Engine: <ul style="list-style-type: none"> Monitor Template- and device-level configuration SSH Proxy* Supplemental CLI* Fabric Engine: Device-level Configuration	Switch Engine: <ul style="list-style-type: none"> Monitor Template- and device-level configuration SSH Proxy Note: Cross stacking between 4000 and 5000 is not supported.
7520-48XT	Switch Engine 33.3 Fabric Engine 9.3	Switch Engine: <ul style="list-style-type: none"> Monitor Template- and device-level configuration SSH Proxy* Supplemental CLI* Fabric Engine: Device-level Configuration	Switch Engine: <ul style="list-style-type: none"> Monitor Template- and device-level configuration SSH Proxy Note: Cross stacking between 4000 and 5000 is not supported.
7720-32c	Switch Engine 33.3 Fabric Engine 9.3	Switch Engine: <ul style="list-style-type: none"> Monitor Template- and device-level configuration SSH Proxy* Supplemental CLI* Fabric Engine: Device-level Configuration	Switch Engine: <ul style="list-style-type: none"> Monitor Template- and device-level configuration SSH Proxy Note: Cross stacking between 4000 and 5000 is not supported.

**Note**

* SSH Proxy and Supplemental CLI can be used for configuring additional parameters not currently available within template or device-level configurations.

ExtremeXOS

Device Model	Latest Supported Release	Standalone Support	Stack Support
X435-8P-2T-W	ExtremeXOS 33.3	<ul style="list-style-type: none"> • Monitor • Template- and device-level configuration • SSH Proxy* • Supplemental CLI* 	N/A
X435-24T-4S	ExtremeXOS 33.3	<ul style="list-style-type: none"> • Monitor • Template- and device-level configuration • SSH Proxy* • Supplemental CLI* 	N/A
X435-24P-4S	ExtremeXOS 33.3	<ul style="list-style-type: none"> • Monitor • Template- and device-level configuration • SSH Proxy* • Supplemental CLI* 	N/A
X435-8T-4S	ExtremeXOS 33.3	<ul style="list-style-type: none"> • Monitor • Template- and device-level configuration • SSH Proxy* • Supplemental CLI* 	N/A
X435-8P-4S	ExtremeXOS 33.3	<ul style="list-style-type: none"> • Monitor • Template- and device-level configuration • SSH Proxy* • Supplemental CLI* 	N/A
X440-G2-12p-10GE4	ExtremeXOS 33.3	<ul style="list-style-type: none"> • Monitor • Template- and device-level configuration • SSH Proxy* • Supplemental CLI* 	<ul style="list-style-type: none"> • Monitor • Template- and device-level configuration • SSH Proxy* • Supplemental CLI*
X440-G2-12t-10GE4	ExtremeXOS 33.3	<ul style="list-style-type: none"> • Monitor • Template- and device-level configuration • SSH Proxy* • Supplemental CLI* 	<ul style="list-style-type: none"> • Monitor • Template- and device-level configuration • SSH Proxy* • Supplemental CLI*

Device Model	Latest Supported Release	Standalone Support	Stack Support
X440-G2-24p-10GE4	ExtremeXOS 33.3	<ul style="list-style-type: none"> • Monitor • Template- and device-level configuration • SSH Proxy* • Supplemental CLI* 	<ul style="list-style-type: none"> • Monitor • Template- and device-level configuration • SSH Proxy* • Supplemental CLI*
X440-G2-24t-10GE4	ExtremeXOS 33.3	<ul style="list-style-type: none"> • Monitor • Template- and device-level configuration • SSH Proxy* • Supplemental CLI* 	<ul style="list-style-type: none"> • Monitor • Template- and device-level configuration • SSH Proxy* • Supplemental CLI*
X440-G2-48p-10GE4	ExtremeXOS 33.3	<ul style="list-style-type: none"> • Monitor • Template- and device-level configuration • SSH Proxy* • Supplemental CLI* 	<ul style="list-style-type: none"> • Monitor • Template- and device-level configuration • SSH Proxy* • Supplemental CLI*
X440-G2-48t-10GE4	ExtremeXOS 33.3	<ul style="list-style-type: none"> • Monitor • Template- and device-level configuration • SSH Proxy* • Supplemental CLI* 	<ul style="list-style-type: none"> • Monitor • Template- and device-level configuration • SSH Proxy* • Supplemental CLI*
X450-G2-24p-GE4	ExtremeXOS 33.3	<ul style="list-style-type: none"> • Monitor • Template- and device-level configuration • SSH Proxy* • Supplemental CLI* 	Monitor
X450-G2-24p-10GE4	ExtremeXOS 33.3	<ul style="list-style-type: none"> • Monitor • Template- and device-level configuration • SSH Proxy* • Supplemental CLI* 	Monitor
X450-G2-48p-10GE4	ExtremeXOS 33.3	<ul style="list-style-type: none"> • Monitor • Template- and device-level configuration • SSH Proxy* • Supplemental CLI* 	Monitor

Device Model	Latest Supported Release	Standalone Support	Stack Support
X460-G2-16mp-32p-10GE4	ExtremeXOS 33.3	<ul style="list-style-type: none"> • Monitor • Template- and device-level configuration • SSH Proxy* • S 	Monitor
X460-G2-24p-10GE4	ExtremeXOS 33.3	<ul style="list-style-type: none"> • Monitor • Template- and device-level configuration • SSH Proxy* • Supplemental CLI* 	Monitor
X460-G2-24p-GE4	ExtremeXOS 33.3	<ul style="list-style-type: none"> • Monitor • Template- and device-level configuration • SSH Proxy* • S 	Monitor
X460-G2-24p-24hp-10GE4	ExtremeXOS 33.3	<ul style="list-style-type: none"> • Monitor • Template- and device-level configuration • SSH Proxy* • Supplemental CLI* 	Monitor
X460-G2-24t-10GE4	ExtremeXOS 33.3	<ul style="list-style-type: none"> • Monitor • Template- and device-level configuration • SSH Proxy* • Supplemental CLI* 	Monitor
X460-G2-24t-GE4	ExtremeXOS 33.3	<ul style="list-style-type: none"> • Monitor • Template- and device-level configuration • SSH Proxy* • Supplemental CLI* 	Monitor
X460-G2-24t-24ht-10GE4	ExtremeXOS 33.3	<ul style="list-style-type: none"> • Monitor • Template- and device-level configuration • SSH Proxy* • Supplemental CLI* 	Monitor
X460-G2-24x-10GE4	ExtremeXOS 33.3	<ul style="list-style-type: none"> • Monitor • Template- and device-level configuration • SSH Proxy* • Supplemental CLI* 	Monitor

Device Model	Latest Supported Release	Standalone Support	Stack Support
X460-G2-48p-10GE4	ExtremeXOS 33.3	<ul style="list-style-type: none"> • Monitor • Template- and device-level configuration • SSH Proxy* • Supplemental CLI* 	Monitor
X460-G2-48t-10GE4	ExtremeXOS 33.3	<ul style="list-style-type: none"> • Monitor • Template- and device-level configuration • SSH Proxy* • Supplemental CLI* 	Monitor
X460-G2-48t-GE4	ExtremeXOS 33.3	<ul style="list-style-type: none"> • Monitor • Template- and device-level configuration • SSH Proxy* • Supplemental CLI* 	Monitor
X460-G2-48x-10GE4	ExtremeXOS 33.3	<ul style="list-style-type: none"> • Monitor • Template- and device-level configuration • SSH Proxy* • Supplemental CLI* 	Monitor
X465-24W	ExtremeXOS 33.3	<ul style="list-style-type: none"> • Monitor • Template- and device-level configuration • SSH Proxy* • Supplemental CLI* 	Monitor
X465-48W	ExtremeXOS 33.3	<ul style="list-style-type: none"> • Monitor • Template- and device-level configuration • SSH Proxy* • Supplemental CLI* 	Monitor
X465-24MU	ExtremeXOS 33.3	<ul style="list-style-type: none"> • Monitor • Template- and device-level configuration • SSH Proxy* • Supplemental CLI* 	Monitor

Device Model	Latest Supported Release	Standalone Support	Stack Support
X465-48P	ExtremeXOS 33.3	<ul style="list-style-type: none"> • Monitor • Template- and device-level configuration • SSH Proxy* • Supplemental CLI* 	Monitor
X465-24MU-24W	ExtremeXOS 33.3	<ul style="list-style-type: none"> • Monitor • Template- and device-level configuration • SSH Proxy* • Supplemental CLI* 	Monitor

**Note**

* SSH Proxy and Supplemental CLI can be used for configuring additional parameters not currently available within template or device-level configurations.

VOSS

Device Model	Latest Supported Release	Standalone Support	Stack Support
VSP7432CQ	VOSS 9.2.1.0	<ul style="list-style-type: none"> • Monitor • Device-level configuration • SSH Proxy* • Supplemental CLI* 	Not supported
VSP7400-48Y	VOSS 9.2.1.0	<ul style="list-style-type: none"> • Monitor • Device-level configuration • SSH Proxy* • Supplemental CLI* 	Not supported
VSP4900-48P	VOSS 9.2.1.0	<ul style="list-style-type: none"> • Monitor • Device-level configuration • SSH Proxy* • Supplemental CLI* 	Not supported
VSP4900-24XE	VOSS 9.2.1.0	<ul style="list-style-type: none"> • Monitor • Device-level configuration • SSH Proxy* • Supplemental CLI* 	Not supported

Device Model	Latest Supported Release	Standalone Support	Stack Support
VSP4900-24S	VOSS 9.2.1.0	<ul style="list-style-type: none">• Monitor• Device-level configuration• SSH Proxy*• Supplemental CLI*	Not supported
VSP4900-12MXU-12XE	VOSS 9.2.1.0	<ul style="list-style-type: none">• Monitor• Device-level configuration• SSH Proxy*• Supplemental CLI*	Not supported

**Note**

* SSH Proxy and Supplemental CLI can be used for configuring additional parameters not currently available within template or device-level configurations.