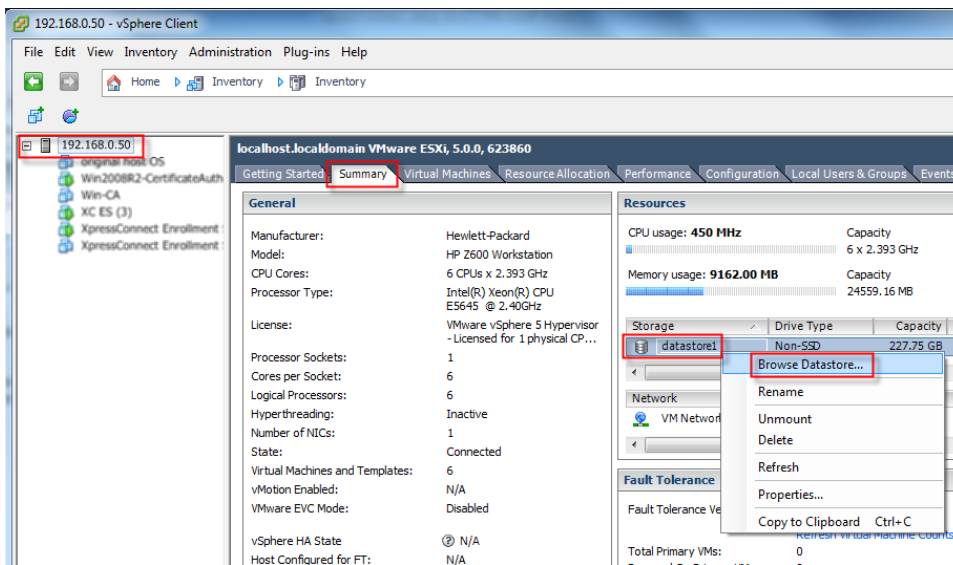


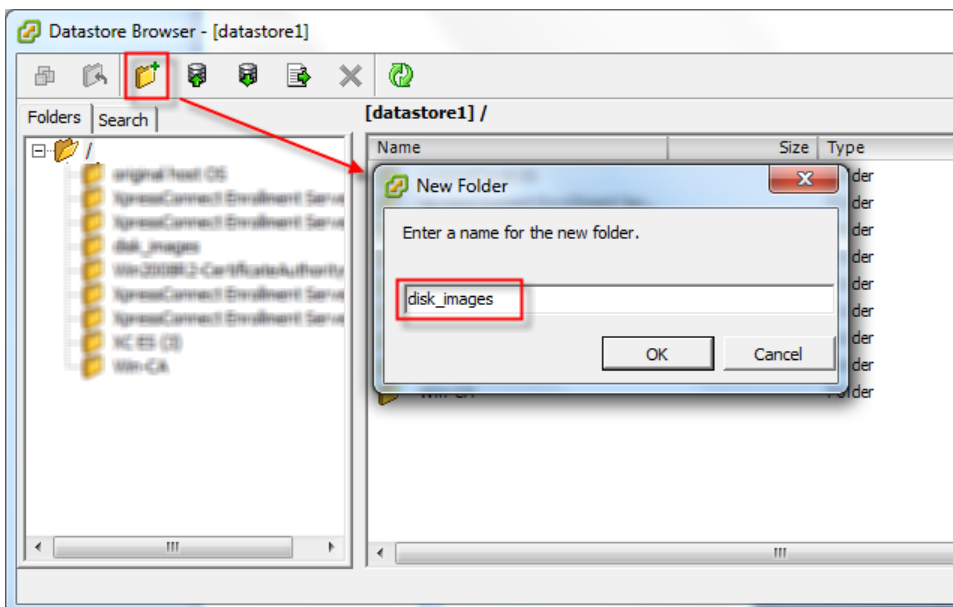
OVERVIEW

One convenient tool for setting up an ESXi server is to upload any operating system CD/DVD images for VMs to the datastore so they can be mounted as virtual drives. This makes it easy to setup new VMs, reload VMs, or add services from the setup disks. These steps will show how to create a repository for operating system disk images.

1. **Using vSphere Client, select the VM server node. Click on the Summary tab. Right click on the datastore1 item in the right hand pane, and select Browse Datastore.**

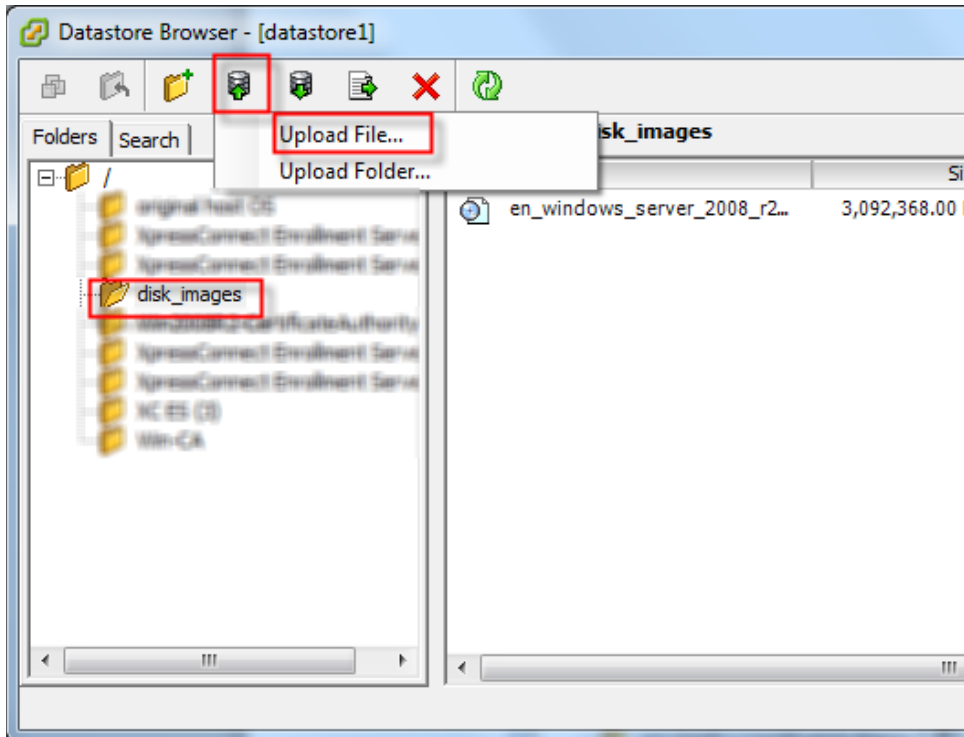


2. **Click on the new folder icon. Give the folder a name such as "disk_images". This is where you will store ISO images of your OS installation CD/DVDs. Click OK.**



3. Click on the new folder you just created. Click on the upload icon, and choose Upload File. Browse to the ISO file on your hard drive for the Windows Server setup disk ISO file. Highlight the file. Click Open. Choose Yes at the prompt to overwrite files.

Close the Datastore Browser window.1. Using vSphere Client, select the VM server node. Click on the Summary tab. Right click on the datastore1 item in the right hand pane, and select Browse Datastore.

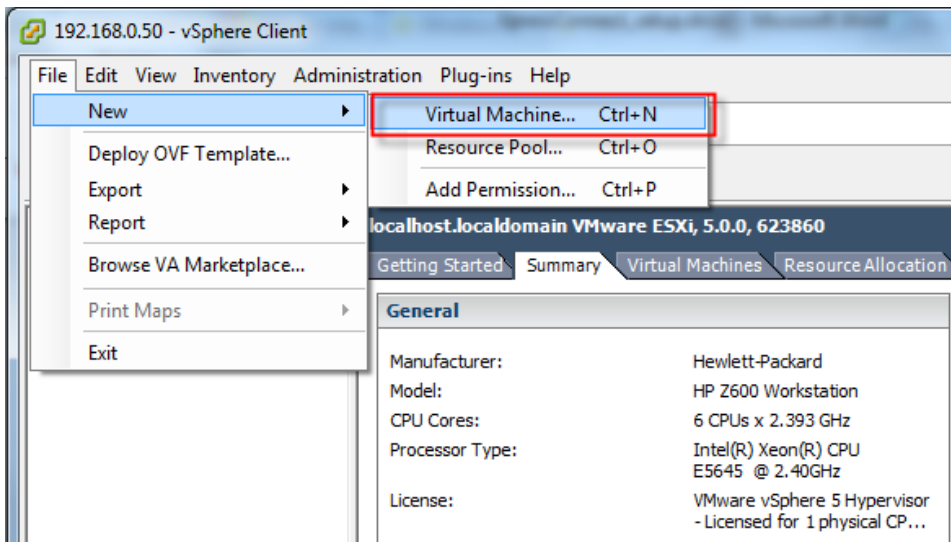


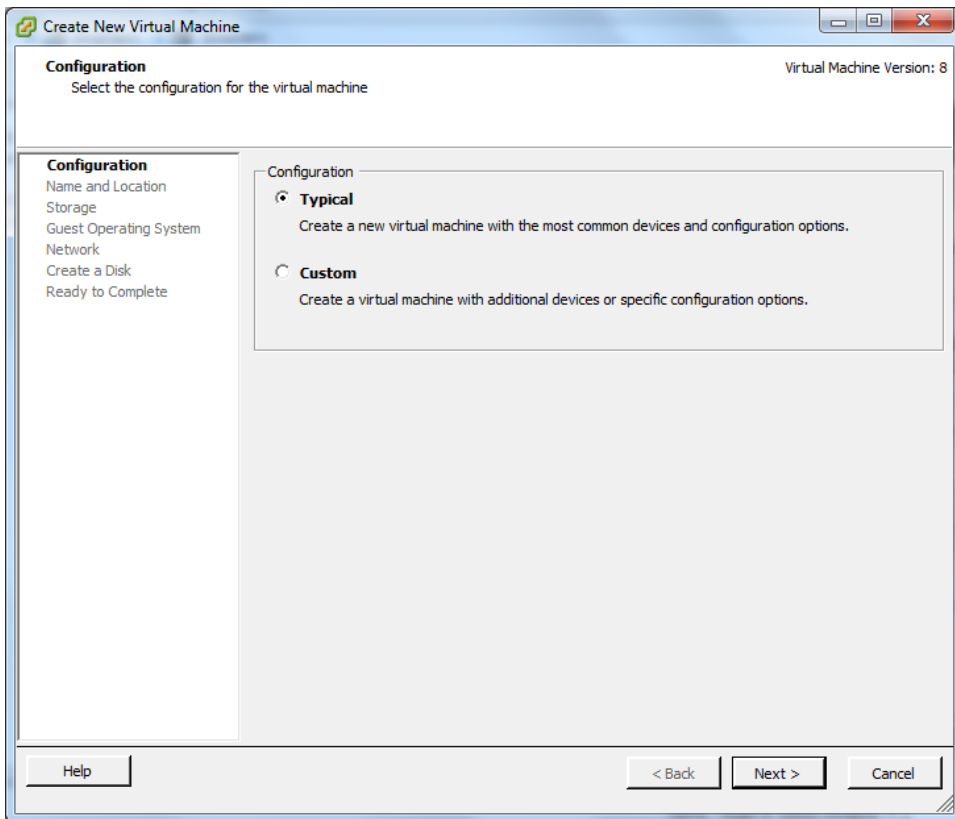
WINDOWS SERVER CONFIGURATION

You will need to configure a number of services as supporting infrastructure, such as Active Directory, DNS, Certificate Authority, Network Policy Server, etc. Some of these are optional, or may differ in a more complicated lab configuration.

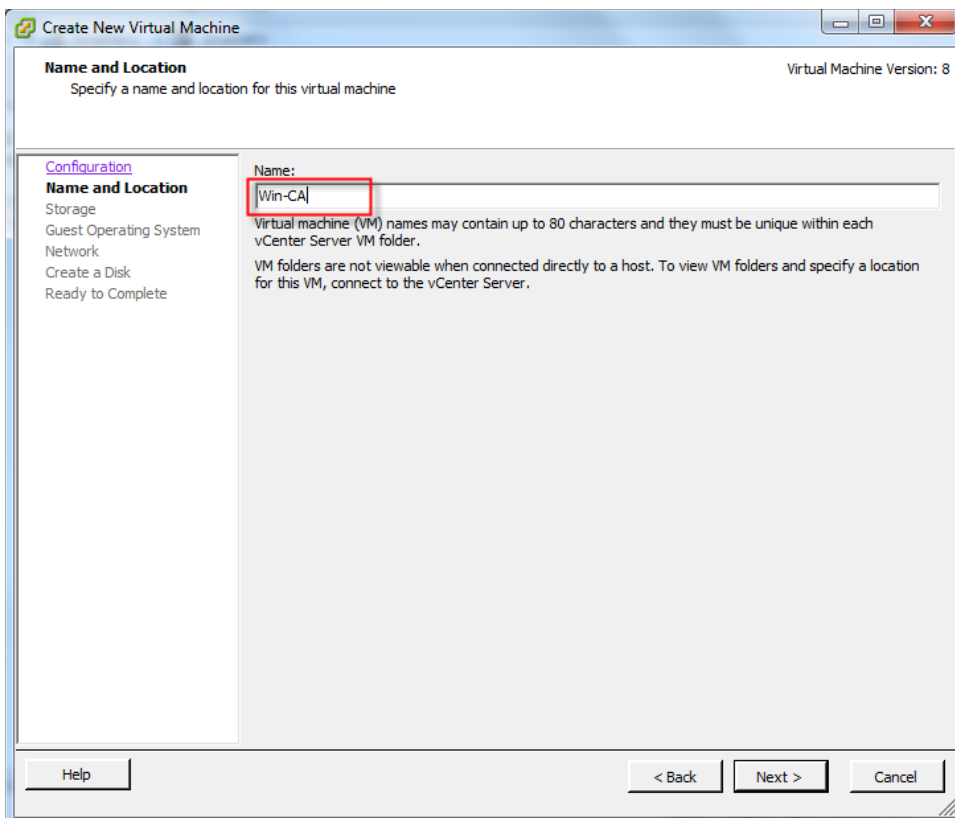
Initial Setup of Windows Server VM

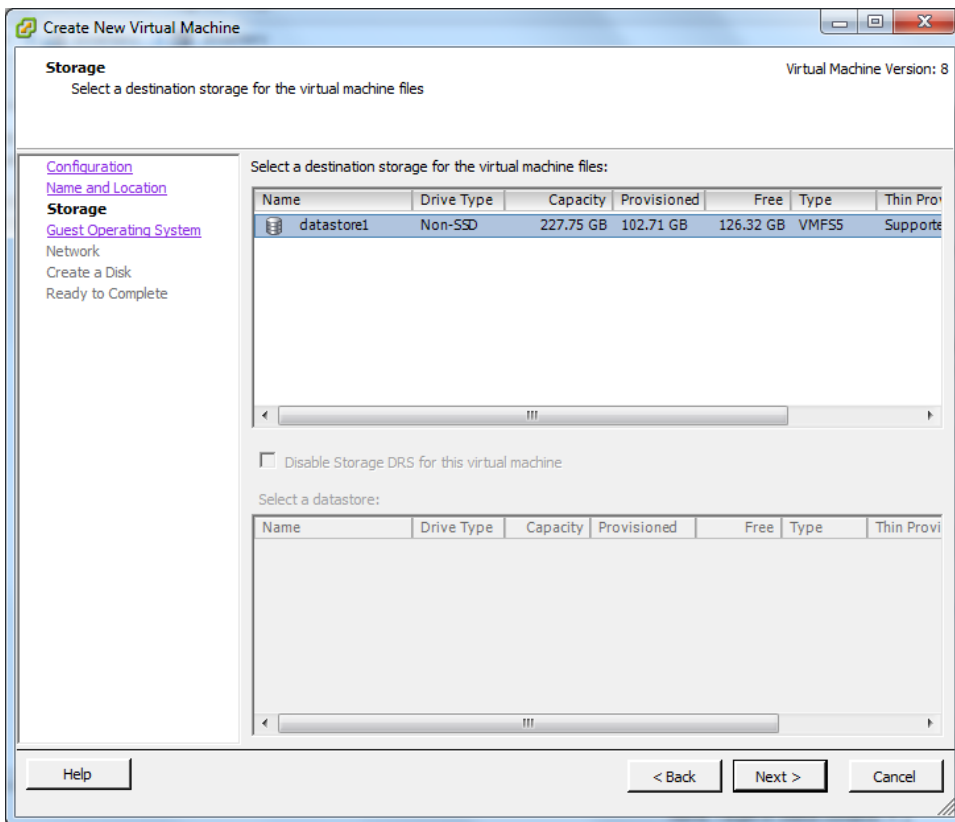
1. From vSphere Client, click File, New, Virtual Machine. Click Next



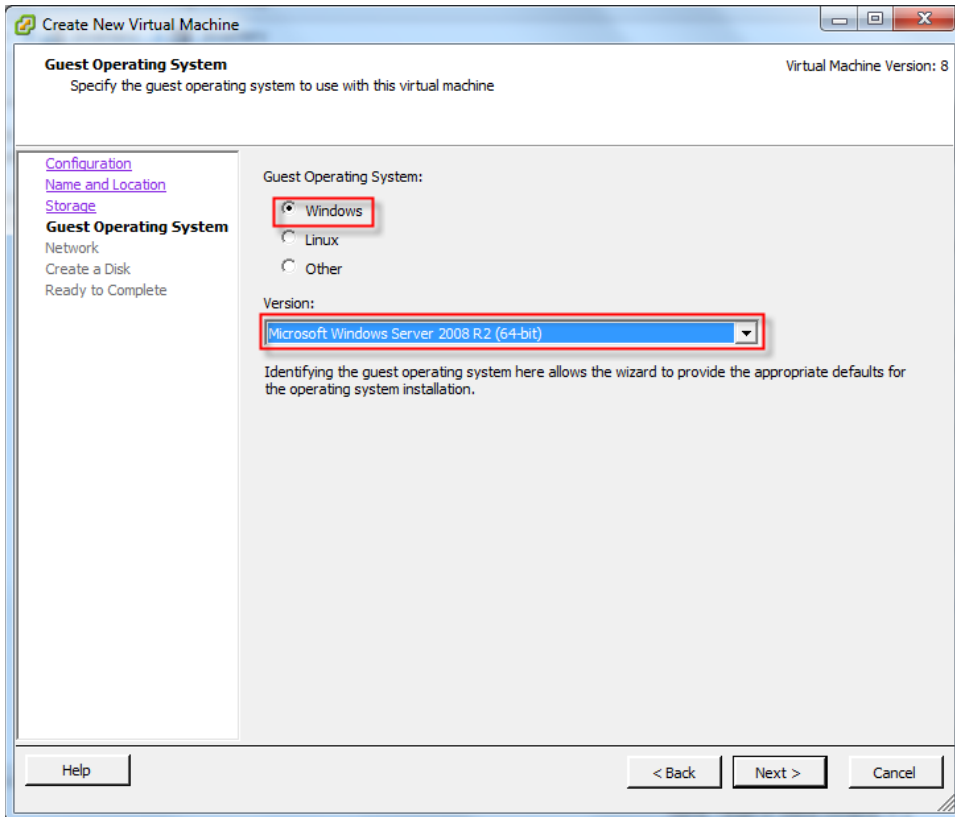


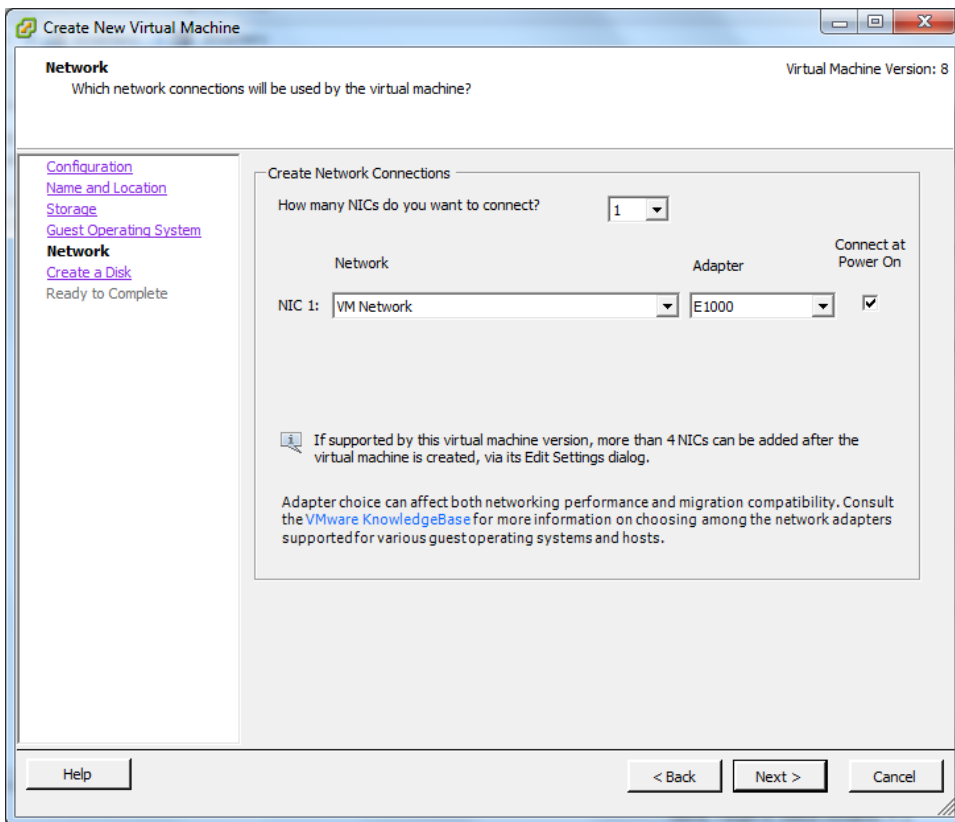
2. Give the VM a name, such as “Win-CA”. Click Next, and then click Next again.



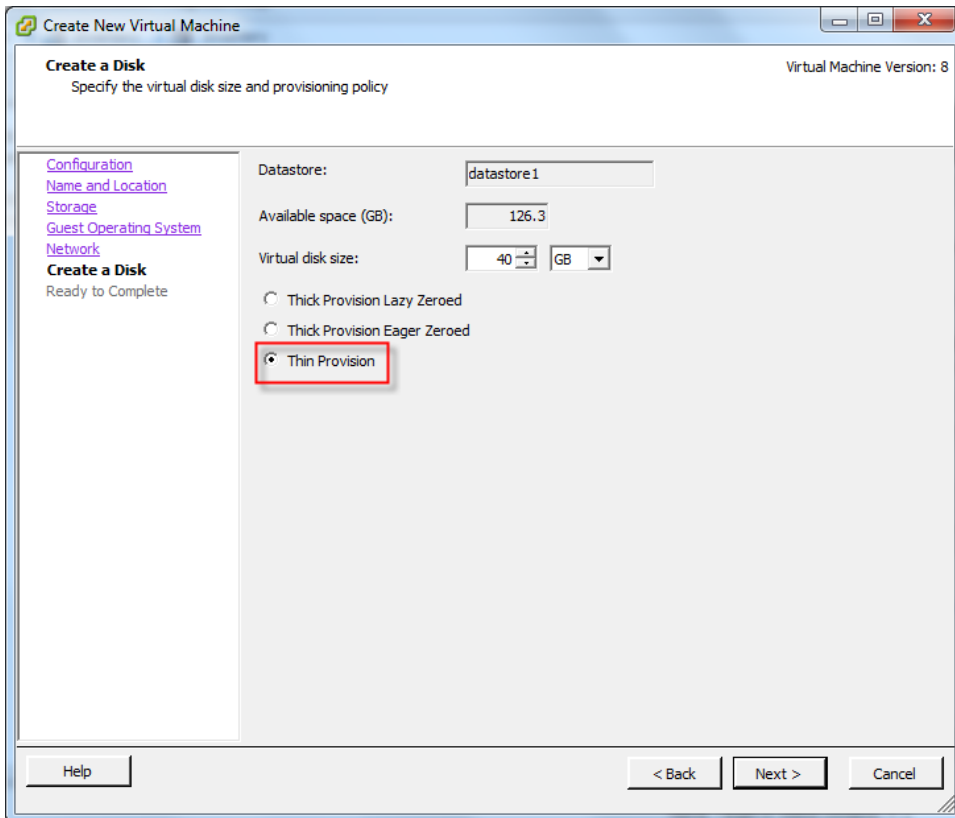


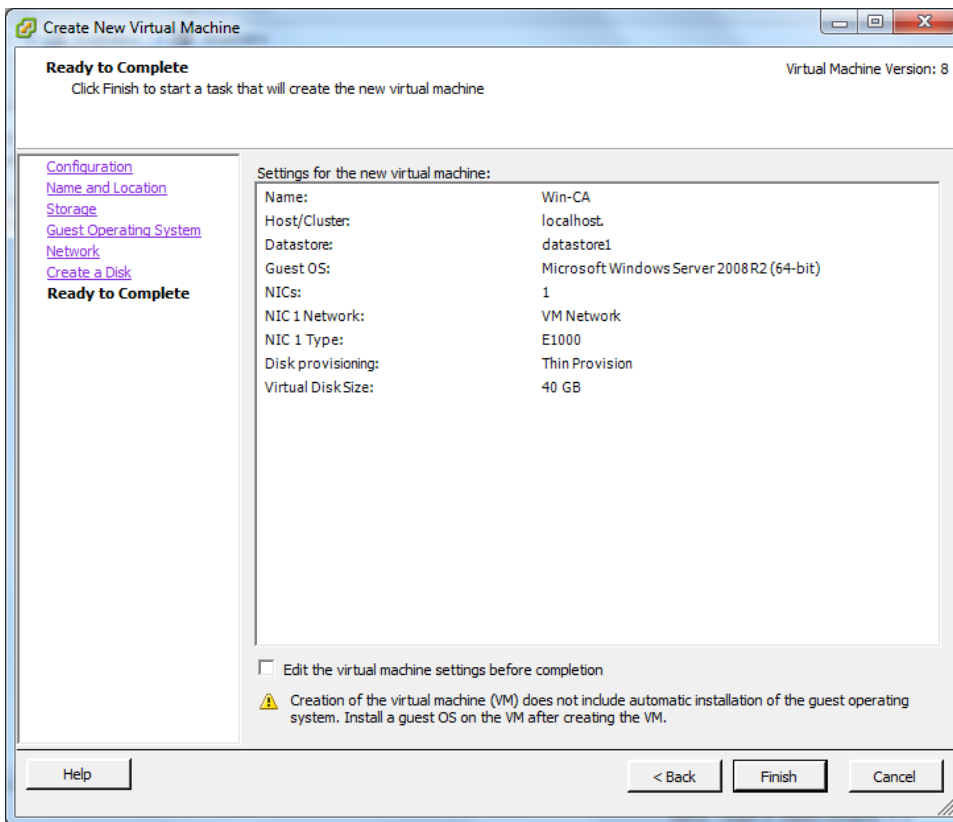
3. **Select Windows as the Operating System and Microsoft Windows Server 2008 R2 (64-bit) as the Version (or select appropriate alternatives depending on which version of Windows server you have available). Click Next. Click Next again.**



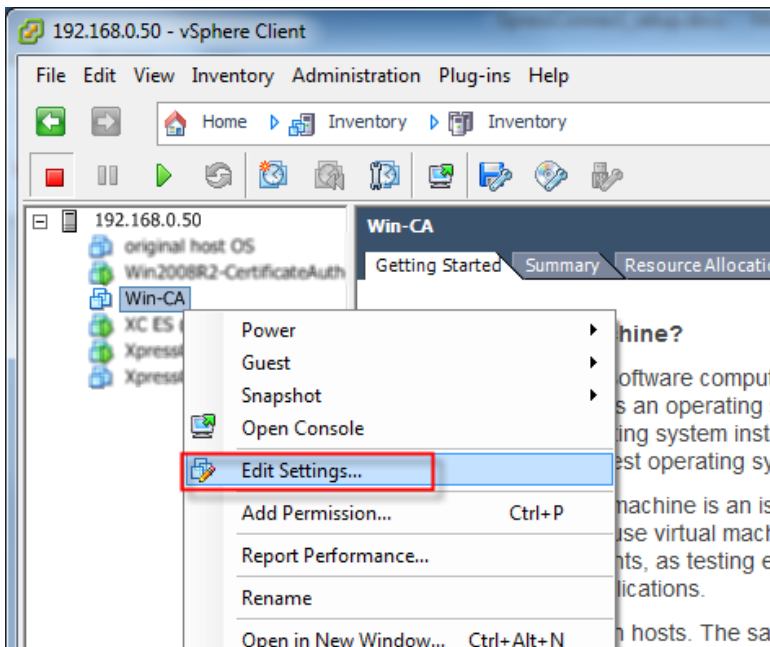


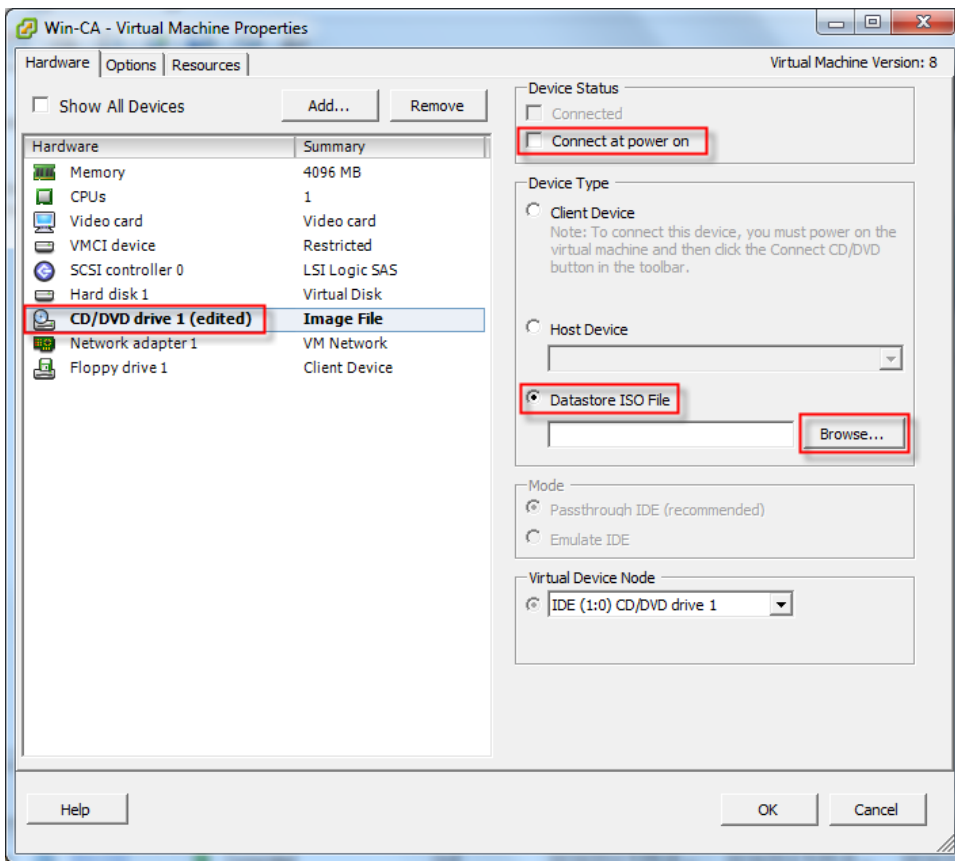
4. Using vSphere Client, select the VM server node. Click on the Summary tab. Right click on the datastore1 item in the right hand pane, and select Browse Datastore.



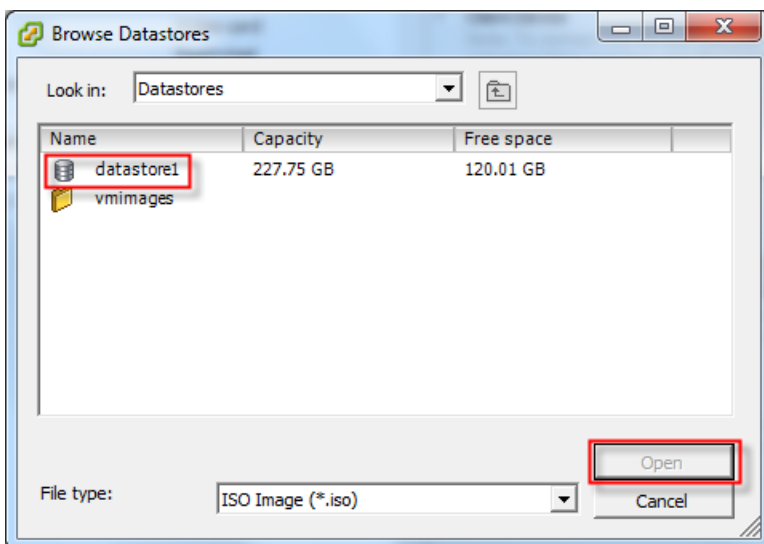


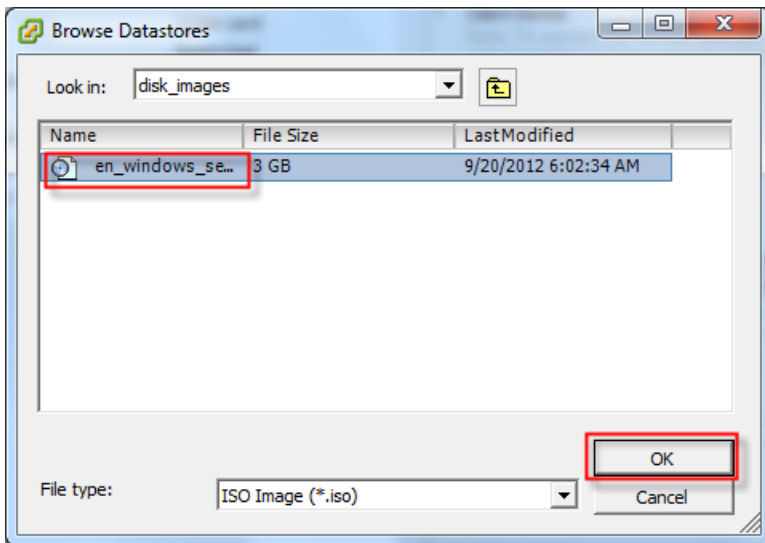
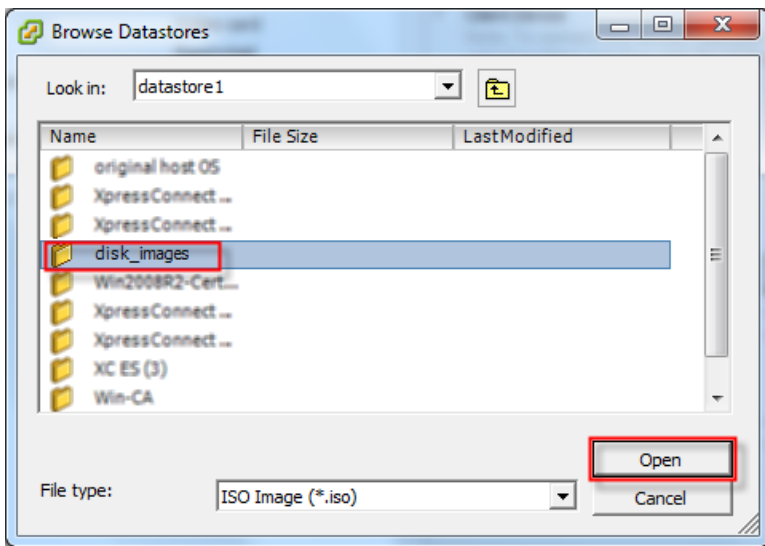
5. Right click on the new VM and choose Edit Settings. Click on CD/DVD drive 1. Select Datastore ISO File. Check Connect at power on. Click Browse to choose the ISO image of the Windows Server setup disk.





6. Click on datastore1, then click Open. Click on your folder where you saved the ISO file and click Open. Click on the Windows Server image file and click OK. Click Ok again.





- Right click on the VM in the tree, select Power, then select Power On. Click on the Launch Virtual Machine Console icon.

