



Extreme OS ONE SR v22.2.2.0 Feature Matrix

Supported Features by Release

9039569-00 Rev AA
April 2026



Copyright © 2026 Extreme Networks, Inc. All rights reserved.

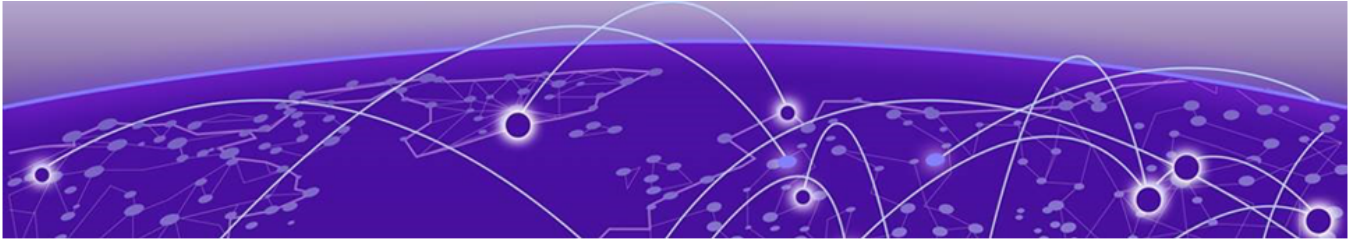
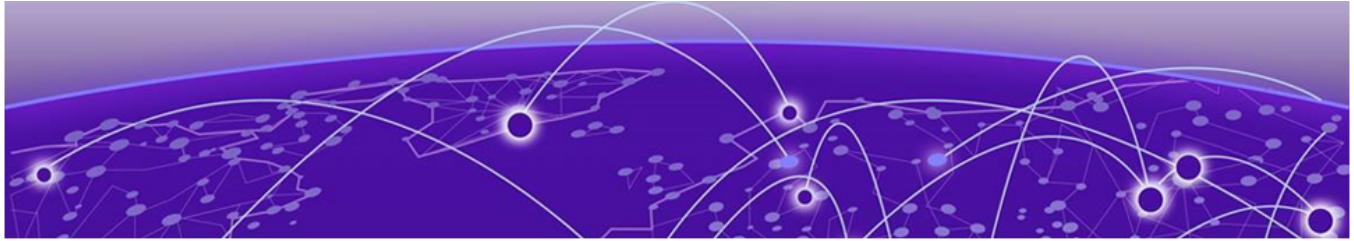


Table of Contents

Legal Notices.....	4
Legal Notice.....	4
Trademarks.....	4
Open Source Declarations.....	4
Abstract.....	v
Feature Matrix.....	6
Help and Support.....	17
Subscribe to Product Announcements.....	17



Legal Notices

Legal Notice

Extreme Networks, Inc. reserves the right to make changes in specifications and other information contained in this document and its website without prior notice. The reader should in all cases consult representatives of Extreme Networks to determine whether any such changes have been made.

The hardware, firmware, software or any specifications described or referred to in this document are subject to change without notice.

Trademarks

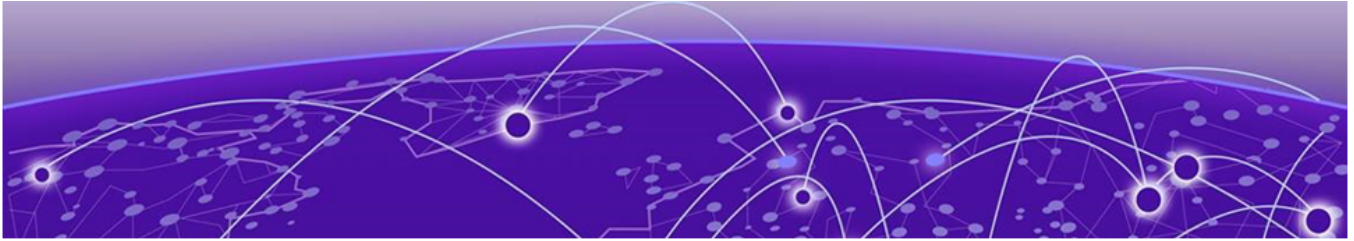
Extreme Networks and the Extreme Networks logo are trademarks or registered trademarks of Extreme Networks, Inc. in the United States and/or other countries.

All other names (including any product names) mentioned in this document are the property of their respective owners and may be trademarks or registered trademarks of their respective companies/owners.

For additional information on Extreme Networks trademarks, see: <https://www.extremenetworks.com/about-extreme-networks/company/legal/trademarks>

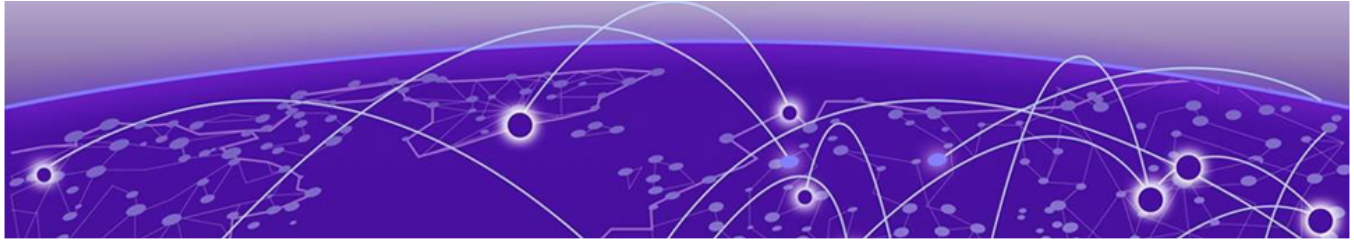
Open Source Declarations

Some software files have been licensed under certain open source or third-party licenses. End-user license agreements and open source declarations can be found at: <https://www.extremenetworks.com/support/policies/open-source-declaration/>



Abstract

Extreme OS ONE SR Feature Matrix, version 22.2.2.0 lists supported features across hardware platforms, indicating the release version in which each feature was introduced. Intended for network professionals, it enables quick comparison of feature availability and platform compatibility, supporting informed planning and deployment decisions. The matrix serves as a practical reference for evaluating technical capabilities, tracking feature evolution, and ensuring alignment with operational requirements in advanced networking environments



Feature Matrix

Extreme OS ONE Switching and Routing 22.2.1.0 and later releases support Extreme 8520, Extreme 8720, Extreme 8730, and Extreme 8820 hardware platforms.

The following table lists the supported features for [#unique_4/unique_4_Connect_42_ONE-OS-Switching](#) platforms, indicating the specific release version in which each feature was introduced.

Feature	Product	Release Introduced
Threshold Monitoring and Events Notifications	8730-32D	22.2.0.0
	8720-32C	22.2.1.0
	8520-48Y / 48XT	22.2.1.0
	8820-40C / 80C	22.2.1.0
Link Layer Discovery Protocol (LLDP)	8730-32D	22.2.0.0
	8720-32C	22.2.1.0
	8520-48Y / 48XT	22.2.1.0
	8820-40C / 80C	22.2.1.0
Link Aggregation Control Protocol (LACP)	8730-32D	22.2.0.0
	8720-32C	22.2.1.0
	8520-48Y / 48XT	22.2.1.0
	8820-40C / 80C	22.2.1.0
Bridge Domain	8730-32D	22.2.0.0
	8720-32C	22.2.1.0
	8520-48Y / 48XT	22.2.1.0
	8820-40C / 80C	22.2.1.0
Rapid MAC-Move Detection	8730-32D	22.2.0.0
	8720-32C	22.2.1.0
	8520-48Y / 48XT	22.2.1.0
	8820-40C / 80C	22.2.1.0
Address Resolution and Discovery Protocols	8730-32D	22.2.0.0
	8720-32C	22.2.1.0
	8520-48Y / 48XT	22.2.1.0
	8820-40C / 80C	22.2.1.0

Feature	Product	Release Introduced
Static Routing	8730-32D	22.2.0.0
	8720-32C	22.2.1.0
	8520-48Y / 48XT	22.2.1.0
	8820-40C / 80C	22.2.1.0
Access Control List (ACL)	8730-32D	22.2.0.0
	8720-32C	22.2.1.0
	8520-48Y / 48XT	22.2.1.0
	8820-40C / 80C	22.2.1.0
Quality/Classification of Service (QoS/CoS)	8730-32D	22.2.0.0
	8720-32C	22.2.1.0
	8520-48Y / 48XT	22.2.1.0
	8820-40C / 80C	22.2.1.0
Border Gateway Protocol (BGP)	8730-32D	22.2.0.0
	8720-32C	22.2.1.0
	8520-48Y / 48XT	22.2.1.0
	8820-40C / 80C	22.2.1.0
BGP-Prefix Independent Convergence (BGP-PIC)	8730-32D	22.2.0.0
	8720-32C	22.2.1.0
	8520-48Y / 48XT	22.2.1.0
	8820-40C / 80C	22.2.1.0
BGP Route Policy	8730-32D	22.2.0.0
	8720-32C	22.2.1.0
	8520-48Y / 48XT	22.2.1.0
	8820-40C / 80C	22.2.1.0
Bidirectional Forwarding Detection (BFD)	8730-32D	22.2.0.0
	8720-32C	22.2.1.0
	8520-48Y / 48XT	22.2.1.0
	8820-40C / 80C	22.2.1.0
Static Anycast Gateway	8730-32D	22.2.0.0
	8720-32C	22.2.1.0
	8520-48Y / 48XT	22.2.1.0
	8820-40C / 80C	22.2.1.0

Feature	Product	Release Introduced
Multi-Chassis Link Aggregation Group (LAG)	8730-32D	22.2.0.0
	8720-32C	22.2.1.0
	8520-48Y / 48XT	22.2.1.0
	8820-40C / 80C	22.2.1.0
Maintenance Mode	8730-32D	22.2.0.0
	8720-32C	22.2.1.0
	8520-48Y / 48XT	22.2.1.0
	8820-40C / 80C	22.2.1.0
Port Mirroring	8730-32D	22.2.0.0
	8720-32C	22.2.1.0
	8520-48Y / 48XT	22.2.1.0
	8820-40C / 80C	22.2.1.0
Border Gateway Protocol – Ethernet Virtual Private Network (BGP-EVPN)	8730-32D	22.2.0.0
	8720-32C	22.2.1.0
	8520-48Y / 48XT	22.2.1.0
	8820-40C / 80C	22.2.1.0
L2/L3 ARP Suppression	8730-32D	22.2.0.0
	8720-32C	22.2.1.0
	8520-48Y / 48XT	22.2.1.0
	8820-40C / 80C	22.2.1.0
Static Virtual Extensible LAN (VxLAN) (V4) (V6 in Demo Mode)	8730-32D	22.2.0.0
	8720-32C	22.2.1.0
	8520-48Y / 48XT	22.2.1.0
	8820-40C / 80C	22.2.1.0
Resilient Hashing (RH)	8730-32D	22.2.0.0
	8720-32C	22.2.2.0
	8520-48Y / 48XT	22.2.2.0
	8820-40C / 80C	22.2.2.0
Multi-Chassis LAG (MLAG) Resiliency	8730-32D	22.2.0.0
	8720-32C	22.2.1.0
	8520-48Y / 48XT	22.2.1.0
	8820-40C / 80C	22.2.1.0

Feature	Product	Release Introduced
BGP Events and Notifications	8730-32D	22.2.0.0
	8720-32C	22.2.1.0
	8520-48Y / 48XT	22.2.1.0
	8820-40C / 80C	22.2.1.0
Maintenance Mode Notifications	8730-32D	22.2.0.0
	8720-32C	22.2.1.0
	8520-48Y / 48XT	22.2.1.0
	8820-40C / 80C	22.2.1.0
IPv6 Router Advertisement (RA) Router Solicitation (RS)	8730-32D	22.2.0.0
	8720-32C	22.2.1.0
	8520-48Y / 48XT	22.2.1.0
	8820-40C / 80C	22.2.1.0
BGP Underlay	8730-32D	22.2.0.0
	8720-32C	22.2.1.0
	8520-48Y / 48XT	22.2.1.0
	8820-40C / 80C	22.2.1.0
CPU CoS	8730-32D	22.2.0.0
	8720-32C	22.2.1.0
	8520-48Y / 48XT	22.2.1.0
	8820-40C / 80C	22.2.1.0
L2 / L3 Quality of Service (QoS)	8730-32D	22.2.0.0
	8720-32C	22.2.1.0
	8520-48Y / 48XT	22.2.1.0
	8820-40C / 80C	22.2.1.0
Gratuitous Address Resolution Protocol (GARP)	8730-32D	22.2.0.0
	8720-32C	22.2.1.0
	8520-48Y / 48XT	22.2.1.0
	8820-40C / 80C	22.2.1.0
BGP Default Route Originate	8730-32D	22.2.0.0
	8720-32C	22.2.1.0
	8520-48Y / 48XT	22.2.1.0
	8820-40C / 80C	22.2.1.0

Feature	Product	Release Introduced
Rapid Mac Move Detection	8730-32D	22.2.0.0
	8720-32C	22.2.1.0
	8520-48Y / 48XT	22.2.1.0
	8820-40C / 80C	22.2.1.0
Fabric Quality of Service (QoS)	8730-32D	22.2.1.0
	8720-32C	22.2.1.0
	8520-48Y / 48XT	22.2.1.0
	8820-40C / 80C	22.2.1.0
Static Route with Next-Hop as an Interface	8730-32D	22.2.1.0
	8720-32C	22.2.1.0
	8520-48Y / 48XT	22.2.1.0
	8820-40C / 80C	22.2.1.0
QoS Scheduling	8730-32D	22.2.1.0
	8720-32C	22.2.2.0
	8520-48Y / 48XT	22.2.2.0
	8820-40C / 80C	22.2.2.0
Multiprotocol Border Gateway Protocol (MP-BGP) (V6 over V4)	8730-32D	22.2.1.0
	8720-32C	22.2.1.0
	8520-48Y / 48XT	22.2.1.0
	8820-40C / 80C	22.2.1.0
IAH (Integrated Appliance Hosting)	8730-32D	22.2.0.0
	8720-32C	22.2.1.0
	8520-48Y / 48XT	22.2.1.0
	8820-40C / 80C	22.2.1.0
Third-Party Virtual Machine (TPVM)	8730-32D	22.2.0.0
	8720-32C	22.2.1.0
	8520-48Y / 48XT	Not Applicable
	8820-40C / 80C	22.2.1.0
Logging & Rsyslog	8730-32D	22.2.0.0
	8720-32C	22.2.1.0
	8520-48Y / 48XT	22.2.1.0
	8820-40C / 80C	22.2.1.0

Feature	Product	Release Introduced
Out of Band (OOB) Management	8730-32D	22.2.0.0
	8720-32C	22.2.1.0
	8520-48Y / 48XT	22.2.1.0
	8820-40C / 80C	22.2.1.0
Dual Management	8730-32D	22.2.0.0
	8720-32C	22.2.1.0
	8520-48Y / 48XT	Not Applicable
	8820-40C / 80C	22.2.1.0 (Only for 8820-80C)
Redundant Management Ethernet (RME)	8730-32D	Not Applicable
	8720-32C	Not Applicable
	8520-48Y / 48XT	22.2.1.0
	8820-40C / 80C	22.2.1.0 (Only for 8820-40C)
Multi-VLAN support on Dual OOB Mgmt Ports	8730-32D	22.2.0.0
	8720-32C	22.2.1.0
	8520-48Y / 48XT	Not Applicable
	8820-40C / 80C	22.2.1.0 (Only for 8820-80C)
Disable IP Forwarding on Out-of-Band Management (OOBM) Interface	8730-32D	22.2.0.0
	8720-32C	22.2.1.0
	8520-48Y / 48XT	22.2.1.0
	8820-40C / 80C	22.2.1.0
Enforce Replacement of Default Passwords (GRUB boot loader)	8730-32D	22.2.0.0
	8720-32C	22.2.1.0
	8520-48Y / 48XT	22.2.1.0
	8820-40C / 80C	22.2.1.0
Image Management - Firmware upgrade support: <ul style="list-style-type: none"> • Open Network Install Environment (ONIE) • Hypertext Transfer Protocol (HTTP) • Hypertext Transfer Protocol Secure (HTTPS) • Secure File Transfer Protocol (SFTP) • Secure Copy Protocol (SCP) • Universal Serial Bus (USB) • Disk 	8730-32D	22.2.0.0
	8720-32C	22.2.1.0
	8520-48Y / 48XT	22.2.1.0
	8820-40C / 80C	22.2.1.0

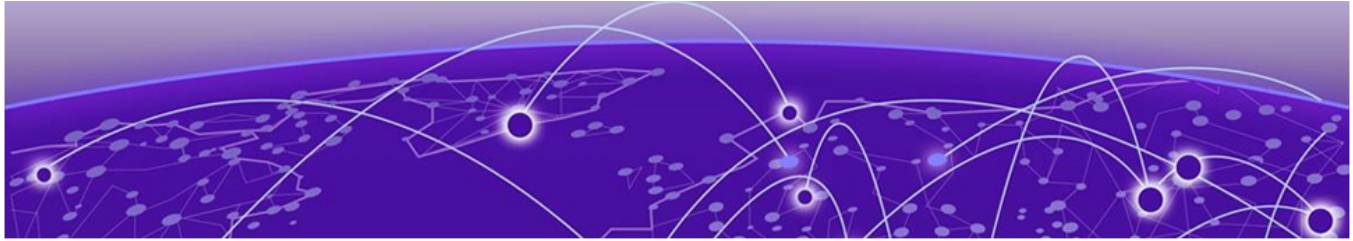
Feature	Product	Release Introduced
Firmware Upgrade - Full Install Mode Support	8730-32D	22.2.0.0
	8720-32C	22.2.1.0
	8520-48Y / 48XT	22.2.1.0
	8820-40C / 80C	22.2.1.0
Temperature Sensors Monitoring and Notification	8730-32D	22.2.0.0
	8720-32C	22.2.1.0
	8520-48Y / 48XT	22.2.1.0
	8820-40C / 80C	22.2.1.0
Password Expiry Alert	8730-32D	22.2.0.0
	8720-32C	22.2.1.0
	8520-48Y / 48XT	22.2.1.0
	8820-40C / 80C	22.2.1.0
Password Entropy and Handling for Special Characters	8730-32D	22.2.0.0
	8720-32C	22.2.1.0
	8520-48Y / 48XT	22.2.1.0
	8820-40C / 80C	22.2.1.0
Zero Touch Provisioning (ZTP) Support Over Management Port	8730-32D	22.2.0.0
	8720-32C	22.2.1.0
	8520-48Y / 48XT	22.2.1.0
	8820-40C / 80C	22.2.1.0
Port Operations (Link Operations, Forward Error Correction (FEC), Port LED, Link Fault Signaling (LFS), Carrier transitions, Traffic counters, breakout)	8730-32D	22.2.0.0
	8720-32C	22.2.1.0
	8520-48Y / 48XT	22.2.1.0
	8820-40C / 80C	22.2.1.0
Hardware: PSU, FAN, System Sensor, USB support, System LED, Console access, Hardware Root of Trust (HWROT)	8730-32D	22.2.0.0
	8720-32C	22.2.1.0
	8520-48Y / 48XT	22.2.1.0
	8820-40C / 80C	22.2.1.0
Key Health Indicators	8730-32D	22.2.0.0
	8720-32C	22.2.1.0
	8520-48Y / 48XT	22.2.1.0
	8820-40C / 80C	22.2.1.0

Feature	Product	Release Introduced
BMC Security Hardening	8730-32D	22.2.0.0
	8720-32C	22.2.1.0
	8520-48Y / 48XT	22.2.1.0
	8820-40C / 80C	22.2.1.0
K3S Certificate Expiry	8730-32D	22.2.0.0
	8720-32C	22.2.1.0
	8520-48Y / 48XT	22.2.1.0
	8820-40C / 80C	22.2.1.0
Authentication Authorization and Accounting (AAA): <ul style="list-style-type: none"> • Local User Management • Remote Authentication Dial-In User Service (RADIUS) • Terminal Access Controller Access Control System (TACACS+) • Lightweight Directory Access Protocol (LDAP) 	8730-32D	22.2.0.0
	8720-32C	22.2.1.0
	8520-48Y / 48XT	22.2.1.0
	8820-40C / 80C	22.2.1.0
Network Time Protocol (NTP) & Clock	8730-32D	22.2.0.0
	8720-32C	22.2.1.0
	8520-48Y / 48XT	22.2.1.0
	8820-40C / 80C	22.2.1.0
Secure Shell (SSH)	8730-32D	22.2.0.0
	8720-32C	22.2.1.0
	8520-48Y / 48XT	22.2.1.0
	8820-40C / 80C	22.2.1.0
Telnet	8730-32D	22.2.0.0
	8720-32C	22.2.1.0
	8520-48Y / 48XT	22.2.1.0
	8820-40C / 80C	22.2.1.0
Certificate Management	8730-32D	22.2.0.0
	8720-32C	22.2.1.0
	8520-48Y / 48XT	22.2.1.0
	8820-40C / 80C	22.2.1.0

Feature	Product	Release Introduced
Key Chain Management	8730-32D	22.2.0.0
	8720-32C	22.2.1.0
	8520-48Y / 48XT	22.2.1.0
	8820-40C / 80C	22.2.1.0
Token Management	8730-32D	22.2.0.0
	8720-32C	22.2.1.0
	8520-48Y / 48XT	22.2.1.0
	8820-40C / 80C	22.2.1.0
Start Shell	8730-32D	22.2.0.0
	8720-32C	22.2.1.0
	8520-48Y / 48XT	22.2.1.0
	8820-40C / 80C	22.2.1.0
Simple Network Management Protocol (SNMP)	8730-32D	22.2.0.0
	8720-32C	22.2.1.0
	8520-48Y / 48XT	22.2.1.0
	8820-40C / 80C	22.2.1.0
Banner	8730-32D	22.2.0.0
	8720-32C	22.2.1.0
	8520-48Y / 48XT	22.2.1.0
	8820-40C / 80C	22.2.1.0
Python Script Execution Support	8730-32D	22.2.0.0
	8720-32C	22.2.1.0
	8520-48Y / 48XT	22.2.1.0
	8820-40C / 80C	22.2.1.0
Config File Management	8730-32D	22.2.0.0
	8720-32C	22.2.1.0
	8520-48Y / 48XT	22.2.1.0
	8820-40C / 80C	22.2.1.0
Transport Layer Security (TLS) and Mutual Transport Layer Security (mTLS)	8730-32D	22.2.0.0
	8720-32C	22.2.1.0
	8520-48Y / 48XT	22.2.1.0
	8820-40C / 80C	22.2.1.0

Feature	Product	Release Introduced
gRPC Network Management Interface (gNMI) Notifications	8730-32D	22.2.0.0
	8720-32C	22.2.1.0
	8520-48Y / 48XT	22.2.1.0
	8820-40C / 80C	22.2.1.0
Command Line Interface (CLI) History	8730-32D	22.2.0.0
	8720-32C	22.2.1.0
	8520-48Y / 48XT	22.2.1.0
	8820-40C / 80C	22.2.1.0
Inband Management	8730-32D	22.2.0.0
	8720-32C	22.2.1.0
	8520-48Y / 48XT	22.2.1.0
	8820-40C / 80C	22.2.1.0
Link Dampening	8730-32D	22.2.1.0
	8720-32C	22.2.1.0
	8520-48Y / 48XT	22.2.1.0
	8820-40C / 80C	22.2.1.0
Startup-config / Backup-config Support	8730-32D	22.2.1.0
	8720-32C	22.2.1.0
	8520-48Y / 48XT	22.2.1.0
	8820-40C / 80C	22.2.1.0
Licensing	8730-32D	22.2.1.0
	8720-32C	22.2.1.0
	8520-48Y / 48XT	22.2.1.0
	8820-40C / 80C	22.2.1.0
VRF and Source-Interface Support	8730-32D	22.2.2.0
	8720-32C	22.2.2.0
	8520-48Y / 48XT	22.2.2.0
	8820-40C / 80C	22.2.2.0
ICMP Rate Limiting	8730-32D	22.2.2.0
	8720-32C	22.2.2.0
	8520-48Y / 48XT	22.2.2.0
	8820-40C / 80C	22.2.2.0

Feature	Product	Release Introduced
Limit Maximum connections per IP Address	8730-32D	22.2.2.0
	8720-32C	22.2.2.0
	8520-48Y / 48XT	22.2.2.0
	8820-40C / 80C	22.2.2.0
Network Element Authentication support	8730-32D	22.2.2.0
	8720-32C	22.2.2.0
	8520-48Y / 48XT	22.2.2.0
	8820-40C / 80C	22.2.2.0
Strong Password Entropy	8730-32D	22.2.2.0
	8720-32C	22.2.2.0
	8520-48Y / 48XT	22.2.2.0
	8820-40C / 80C	22.2.2.0
RAS Warning	8730-32D	22.2.2.0
	8720-32C	22.2.2.0
	8520-48Y / 48XT	22.2.2.0
	8820-40C / 80C	22.2.2.0
ACL based Mirroring	8730-32D	22.2.2.0
	8720-32C	22.2.2.0
	8520-48Y / 48XT	22.2.2.0
	8820-40C / 80C	22.2.2.0
QoS Drop Precedence support	8730-32D	22.2.2.0
	8720-32C	22.2.2.0
	8520-48Y / 48XT	22.2.2.0
	8820-40C / 80C	22.2.2.0
ACL based QoS Marking	8730-32D	22.2.2.0
	8720-32C	22.2.2.0
	8520-48Y / 48XT	22.2.2.0
	8820-40C / 80C	22.2.2.0
MLAG Resiliency Enhancement	8730-32D	22.2.2.0
	8720-32C	22.2.2.0
	8520-48Y / 48XT	22.2.2.0
	8820-40C / 80C	22.2.2.0



Help and Support

If you require assistance, contact Extreme Networks using one of the following methods:

Extreme Portal

Search the GTAC (Global Technical Assistance Center) knowledge base; manage support cases and service contracts; download software; and obtain product licensing, training, and certifications.

The Hub

A forum for Extreme Networks customers to connect with one another, answer questions, and share ideas and feedback. This community is monitored by Extreme Networks employees, but is not intended to replace specific guidance from GTAC.

Call GTAC

For immediate support: (800) 998 2408 (toll-free in U.S. and Canada) or 1 (408) 579 2800. For the support phone number in your country, visit www.extremenetworks.com/support/contact.

Before contacting Extreme Networks for technical support, have the following information ready:

- Your Extreme Networks service contract number, or serial numbers for all involved Extreme Networks products
- A description of the failure
- A description of any actions already taken to resolve the problem
- A description of your network environment (such as layout, cable type, other relevant environmental information)
- Network load at the time of trouble (if known)
- The device history (for example, if you have returned the device before, or if this is a recurring problem)
- Any related RMA (Return Material Authorization) numbers

Subscribe to Product Announcements

You can subscribe to email notifications for product and software release announcements, Field Notices, and Vulnerability Notices.

1. Go to [The Hub](#).
2. In the list of categories, expand the **Product Announcements** list.

3. Select a product for which you would like to receive notifications.
4. Select **Subscribe**.
5. To select additional products, return to the **Product Announcements** list and repeat steps 3 and 4.

You can modify your product selections or unsubscribe at any time.