



# Extreme OS ONE Switching and Routing v22.2.2.0 Message Reference Guide

System Log Descriptions, Severity Levels, and  
Troubleshooting Actions

9039562-00 Rev AA  
April 2026



Copyright © 2026 Extreme Networks, Inc. All rights reserved.

## Legal Notice

Extreme Networks, Inc. reserves the right to make changes in specifications and other information contained in this document and its website without prior notice. The reader should in all cases consult representatives of Extreme Networks to determine whether any such changes have been made.

The hardware, firmware, software or any specifications described or referred to in this document are subject to change without notice.

## Trademarks

Extreme Networks and the Extreme Networks logo are trademarks or registered trademarks of Extreme Networks, Inc. in the United States and/or other countries.

All other names (including any product names) mentioned in this document are the property of their respective owners and may be trademarks or registered trademarks of their respective companies/owners.

For additional information on Extreme Networks trademarks, see: <https://www.extremenetworks.com/about-extreme-networks/company/legal/trademarks>

## Open Source Declarations

Some software files have been licensed under certain open source or third-party licenses.

End-user license agreements and open source declarations can be found at: <https://www.extremenetworks.com/support/policies/open-source-declaration/>



# Table of Contents

---

Abstract.....	xii
Preface.....	xiii
Text Conventions.....	xiii
Documentation and Training.....	xiv
Open Source Declarations.....	xv
Training.....	xv
Help and Support.....	xv
Subscribe to Product Announcements.....	xvi
Send Feedback.....	xvi
<b>Extreme OS ONE Switching and Routing Modules.....</b>	<b>17</b>
Overview.....	17
Log Messages.....	17
Log-4001.....	17
Log-4002.....	17
Log-4003.....	18
Log-4004.....	18
Log-4005.....	18
Log-4006.....	18
Log-4007.....	19
Log-4008.....	19
Log-4009.....	19
Log-4010.....	19
Log-4011.....	20
Log-4012.....	20
Log-4013.....	20
Log-4014.....	20
Log-4015.....	20
Log-4016.....	21
Log-4017.....	21
Log-4018.....	21
Log-4019.....	21
Log-4020.....	22
Log-4021.....	22
Log-4022.....	22
Log-4023.....	22
Log-4024.....	23
Log-4025.....	23
Log-4026.....	23
Log-4027.....	23
Log-4028.....	23
Log-4029.....	24

---

Log-4030.....	24
Log-5001.....	24
Log-5002.....	24
Log-5003.....	25
Log-5004.....	25
Log-5005.....	25
Log-5006.....	25
Log-5007.....	25
Log-5008.....	26
Log-5009.....	26
Log-5010.....	26
Log-5011.....	26
Log-5012.....	27
Log-5013.....	27
Log-5014.....	27
Log-5015.....	27
Log-5016.....	28
Log-5017.....	28
Log-5018.....	28
Log-5019.....	28
Log-5020.....	28
Log-5021.....	29
Log-5022.....	29
Log-5023.....	29
Log-5024.....	29
Log-5025.....	30
Log-5026.....	30
Log-5100.....	30
Log-5201.....	30
Log-5202.....	30
Log-5203.....	31
Log-5204.....	31
Log-5205.....	31
Log-5300.....	31
Log-5301.....	32
Log-5302.....	32
Log-5303.....	32
Log-5400.....	32
Log-5401.....	32
Log-5402.....	33
Log-5403.....	33
Log-5404.....	33
Log-5405.....	33
Log-5406.....	34
Log-5407.....	34
Log-5408.....	34
Log-5409.....	34
Log-5410.....	34
Log-6001.....	35

Log-6004.....	35
Log-6005.....	35
Log-6006.....	35
Log-6007.....	36
Log-6008.....	36
Log-6009.....	36
Log-6010.....	36
Log-6011.....	37
Log-6012.....	37
Log-6013.....	37
Log-6014.....	37
Log-6015.....	38
Log-6016.....	38
Log-6017.....	38
Log-6018.....	38
Log-6019.....	39
Log-6020.....	39
Log-7001.....	39
Log-7002.....	39
Log-7003.....	40
Log-7004.....	40
Log-7005.....	40
Log-7006.....	40
Log-7007.....	40
Log-7008.....	41
Log-7009.....	41
Log-7010.....	41
Log-7011.....	41
Log-7012.....	42
Log-7013.....	42
Log-7014.....	42
Log-7015.....	42
Log-7016.....	43
Log-7017.....	43
Log-7018.....	43
Log-7019.....	43
Log-7020.....	43
Log-7021.....	44
Log-7022.....	44
Log-7023.....	44
Log-7024.....	44
Log-7025.....	45
Log-7026.....	45
Log-7027.....	45
Log-7028.....	45
Log-7029.....	46
Log-7030.....	46
Log-7031.....	46
Log-7032.....	46

---

Log-7033.....	47
Log-7034.....	47
Log-7035.....	47
Log-7036.....	47
Log-7037.....	47
Log-7038.....	48
Log-7039.....	48
Log-7040.....	48
Log-7041.....	48
Log-7042.....	49
Log-7043.....	49
Log-7044.....	49
Log-7045.....	50
Log-7046.....	50
Log-7047.....	50
Log-8001.....	50
Log-8002.....	50
Log-8003.....	51
Log-8004.....	51
Log-8005.....	51
Log-8006.....	51
Log-8007.....	52
Log-8008.....	52
Log-8009.....	52
Log-8010.....	52
Log-8011.....	53
Log-8012.....	53
Log-8013.....	53
Log-8014.....	53
Log-8015.....	53
Log-8016.....	54
Log-8017.....	54
Log-8018.....	54
Log-8019.....	54
Log-9001.....	55
Log-9002.....	55
Log-9003.....	55
Log-9004.....	55
Log-9005.....	56
Log-9006.....	56
Log-9007.....	56
Log-9008.....	56
Log-9009.....	56
Log-9010.....	57
Log-9011.....	57
Log-9012.....	57
Log-9013.....	57
Log-9014.....	58
Log-9015.....	58

Log-9016.....	58
Log-9017.....	58
Log-9018.....	58
Log-9019.....	59
Log-9020.....	59
Log-9021.....	59
Log-9022.....	59
Log-9023.....	60
Log-9024.....	60
Log-9025.....	60
Log-9026.....	60
Log-9030.....	60
Log-9031.....	61
Log-9040.....	61
Log-9041.....	61
Log-9042.....	61
Log-12001.....	62
Log-12002.....	62
Log-12003.....	62
Log-12004.....	62
Log-13001.....	63
Log-13002.....	63
Log-13003.....	63
Log-13004.....	63
Log-13005.....	63
Log-13006.....	64
Log-13007.....	64
Log-13008.....	64
Log-13009.....	64
Log-13010.....	65
Log-13011.....	65
Log-13012.....	65
Log-13013.....	65
Log-13014.....	65
Log-13015.....	66
Log-13016.....	66
Log-13017.....	66
Log-13018.....	66
Log-13019.....	67
Log-13020.....	67
Log-13021.....	67
Log-13022.....	67
Log-13023.....	67
Log-13024.....	68
Log-13025.....	68
Log-13026.....	68
Log-16001.....	68
Log-16002.....	69
Log-16003.....	69

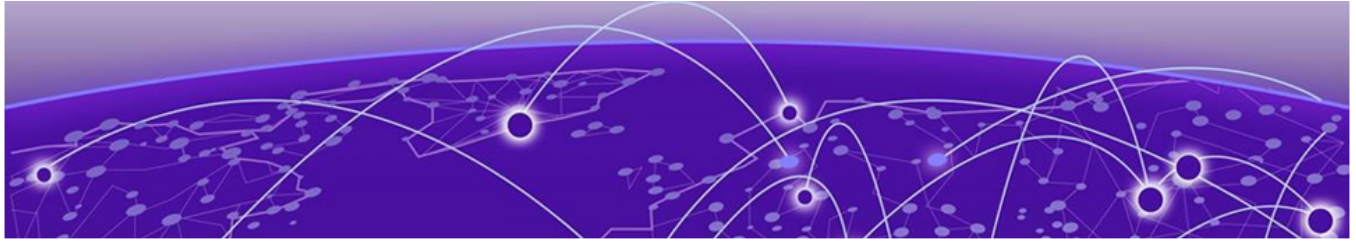
Log-16004.....	69
Log-17001.....	69
Log-17002.....	70
Log-17003.....	70
Log-17004.....	70
Log-17005.....	70
Log-17006.....	71
Log-17007.....	71
Log-17008.....	71
Log-17009.....	71
Log-17010.....	71
Log-17011.....	72
Log-17012.....	72
Log-17013.....	72
Log-17014.....	72
Log-17015.....	73
Log-17016.....	73
Log-17017.....	73
Log-17018.....	73
Log-18005.....	73
Log-19017.....	74
Log-20001.....	74
Log-20002.....	74
Log-20003.....	74
Log-20004.....	75
Log-20005.....	75
Log-20006.....	75
Log-24001.....	75
Log-24003.....	76
Log-24004.....	76
Log-24005.....	76
Log-24006.....	76
Log-24007.....	76
Log-24008.....	77
Log-24009.....	77
Log-24010.....	77
Log-24011.....	77
Log-24012.....	78
Log-24013.....	78
Log-24014.....	78
Log-24015.....	78
Log-24016.....	79
Log-24017.....	79
Log-24018.....	79
Log-25001.....	79
Log-25002.....	79
Log-25003.....	80
Log-25004.....	80
Log-25005.....	80

Log-25006.....	80
Log-25007.....	81
Log-25008.....	81
Log-25009.....	81
Log-25010.....	81
Log-25011.....	81
Log-25012.....	82
Log-25013.....	82
Log-25014.....	82
Log-25015.....	82
Log-25016.....	83
Log-25017.....	83
Log-25018.....	83
Log-25019.....	83
Log-25020.....	83
Log-25021.....	84
Log-25022.....	84
Log-25023.....	84
Log-25024.....	84
Log-25025.....	85
Log-25026.....	85
Log-25027.....	85
Log-25028.....	85
Log-25029.....	86
Log-25030.....	86
Log-25031.....	86
Log-25032.....	86
Log-25033.....	86
Log-25034.....	87
Log-25035.....	87
Log-25036.....	87
Log-25037.....	87
Log-25038.....	88
Log-25039.....	88
Log-25040.....	88
Log-26000.....	88
Log-26001.....	89
Log-26002.....	89
Log-26003.....	89
Log-26004.....	89
Log-26005.....	89
Log-26006.....	90
Log-26007.....	90
Log-27001.....	90
Log-27002.....	90
Log-27003.....	91
Log-27004.....	91
Log-27005.....	91
Log-27006.....	91

---

Log-27007.....	92
Log-27008.....	92
Log-27009.....	92
Log-27010.....	92
Log-27011.....	92
Log-27012.....	93
Log-27013.....	93
Log-27014.....	93
Log-27015.....	93
Log-28001.....	94
Log-28002.....	94
Log-28003.....	94
Log-28004.....	94
Log-28005.....	95
Log-29001.....	95
Log-29002.....	95
Log-29003.....	95
Log-29004.....	95
Log-29005.....	96
Log-29006.....	96
Log-29007.....	96
Log-29008.....	96
Log-29009.....	97
Log-29010.....	97
Log-29011.....	97
Log-29012.....	97
Log-29013.....	98
Log-29014.....	98
Log-29015.....	98
Log-29016.....	98
Log-29017.....	99
Log-29018.....	99
Log-29019.....	99
Log-29020.....	99
Log-29021.....	100
Log-29022.....	100
Log-29023.....	100
Log-29024.....	100
Log-29025.....	101
Log-29026.....	101
Log-29027.....	101
Log-29028.....	101
Log-29029.....	101
Log-29030.....	102
Log-29031.....	102
Log-29032.....	102
Log-29033.....	102
Log-31001.....	103
Log-31002.....	103

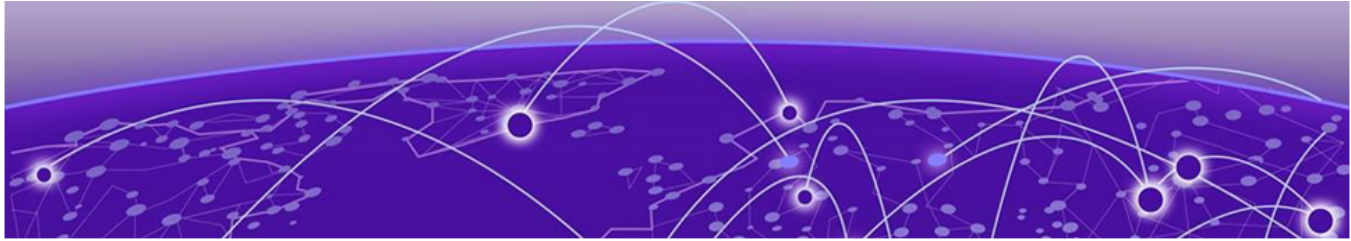
Log-31003.....	103
Log-33001.....	103
Log-33002.....	104
Log-33003.....	104
Log-33004.....	104
Log-33005.....	104
Log-33006.....	105
Log-33007.....	105
Log-33008.....	105
Log-34001.....	105
Log-34002.....	105
Log-34003.....	106
Log-34004.....	106
Log-34005.....	106
Log-34006.....	106
Log-34007.....	107
Log-34008.....	107
Log-34009.....	107
Log-35004.....	107
Log-35005.....	107



# Abstract

---

The Extreme OS ONE SR v22.2.2.0 Message Reference Guide documents RASLog system messages and error codes for the supported Extreme hardware platform. Each module contains structured log entries with severity classifications (Info, Warning, Error, Fatal, Critical, Panic) including probable causes, recommended actions, and impact assessments.



# Preface

---

Read the following topics to learn about:

- The meanings of text formats used in this document.
- Where you can find additional information and help.
- How to reach us with questions and comments.






## Text Conventions

---

Unless otherwise noted, information in this document applies to all supported environments for the products in question. Exceptions, like command keywords associated with a specific software version, are identified in the text.

When a feature, function, or operation pertains to a specific hardware product, the product name is used. When features, functions, and operations are the same across an entire product family, such as Extreme Networks switches, the product is referred to as *the switch*.

**Table 1: Notes and warnings**

Icon	Notice type	Alerts you to..
	Tip	Helpful tips and notices for using the product
	Note	Useful information or instructions
	Important	Important features or instructions
	Caution	Risk of personal injury, system damage, or loss of data
	Warning	Risk of severe personal injury

**Table 2: Text**

Convention	Description
screen displays	This typeface indicates command syntax, or represents information as it is displayed on the screen.
The words <i>enter</i> and <i>type</i>	When you see the word <i>enter</i> in this guide, you must type something, and then press the Return or Enter key. Do not press the Return or Enter key when an instruction simply says <i>type</i> .
<b>Key names</b>	Key names are written in boldface, for example <b>Ctrl</b> or <b>Esc</b> . If you must press two or more keys simultaneously, the key names are linked with a plus sign (+). Example: Press <b>Ctrl+Alt+Del</b>
<i>Words in italicized type</i>	Italics emphasize a point or denote new terms at the place where they are defined in the text. Italics are also used when referring to publication titles.
<b>NEW!</b>	New information. In a PDF, this is searchable text.

**Table 3: Command syntax**

Convention	Description
<b>bold text</b>	Bold text indicates command names, keywords, and command options.
<i>italic text</i>	Italic text indicates variable content.
[ ]	Syntax components displayed within square brackets are optional. Default responses to system prompts are enclosed in square brackets.
{ <b>x</b>   <b>y</b>   <b>z</b> }	A choice of required parameters is enclosed in curly brackets separated by vertical bars. You must select one of the options.
<b>x</b>   <b>y</b>	A vertical bar separates mutually exclusive elements.
< >	Nonprinting characters, such as passwords, are enclosed in angle brackets.
...	Repeat the previous element, for example, <i>member [member...]</i> .
\	In command examples, the backslash indicates a “soft” line break. When a backslash separates two lines of a command input, enter the entire command at the prompt without the backslash.

## Documentation and Training

Find Extreme Networks product information at the following locations:

[Current Product Documentation](#)

[Release Notes](#)

[Hardware and Software Compatibility](#) for Extreme Networks products

[Extreme Optics Compatibility](#)

[Other Resources](#) such as articles, white papers, and case studies

## Open Source Declarations

Some software files have been licensed under certain open source licenses. Information is available on the [Open Source Declaration](#) page.

## Training

Extreme Networks offers product training courses, both online and in person, as well as specialized certifications. For details, visit the [Extreme Networks Training](#) page.

## Help and Support

---

If you require assistance, contact Extreme Networks using one of the following methods:

### Extreme Portal

Search the GTAC (Global Technical Assistance Center) knowledge base; manage support cases and service contracts; download software; and obtain product licensing, training, and certifications.

### The Hub

A forum for Extreme Networks customers to connect with one another, answer questions, and share ideas and feedback. This community is monitored by Extreme Networks employees, but is not intended to replace specific guidance from GTAC.

### Call GTAC

For immediate support: (800) 998 2408 (toll-free in U.S. and Canada) or 1 (408) 579 2800. For the support phone number in your country, visit [www.extremenetworks.com/support/contact](http://www.extremenetworks.com/support/contact).

Before contacting Extreme Networks for technical support, have the following information ready:

- Your Extreme Networks service contract number, or serial numbers for all involved Extreme Networks products
- A description of the failure
- A description of any actions already taken to resolve the problem
- A description of your network environment (such as layout, cable type, other relevant environmental information)
- Network load at the time of trouble (if known)
- The device history (for example, if you have returned the device before, or if this is a recurring problem)
- Any related RMA (Return Material Authorization) numbers

## Subscribe to Product Announcements

You can subscribe to email notifications for product and software release announcements, Field Notices, and Vulnerability Notices.

1. Go to [The Hub](#).
2. In the list of categories, expand the **Product Announcements** list.
3. Select a product for which you would like to receive notifications.
4. Select **Subscribe**.
5. To select additional products, return to the **Product Announcements** list and repeat steps 3 and 4.

You can modify your product selections or unsubscribe at any time.

## Send Feedback

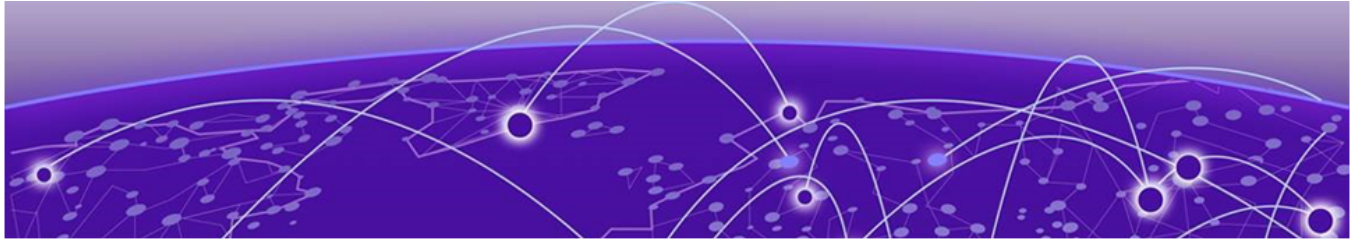
---

The User Enablement team at Extreme Networks has made every effort to ensure that this document is accurate, complete, and easy to use. We strive to improve our documentation to help you in your work, so we want to hear from you. We welcome all feedback, but we especially want to know about:

- Content errors, or confusing or conflicting information.
- Improvements that would help you find relevant information.
- Broken links or usability issues.

To send feedback, email us at [Product-Documentation@extremenetworks.com](mailto:Product-Documentation@extremenetworks.com).

Provide as much detail as possible including the publication title, topic heading, and page number (if applicable), along with your comments and suggestions for improvement.



# Extreme OS ONE Switching and Routing Modules

---

[Overview](#) on page 17

[Log Messages](#) on page 17

Use this topic to learn about the system log messages.

## Overview

---

Extreme OS ONE Switching and Routing generates system log messages to help network administrators monitor system health, diagnose issues, and maintain optimal network performance. Each log message includes:

- **Log ID:** Unique identifier for the message
- **Severity:** Critical level of the message (Info, Warning, Error, Fatal, Panic)
- **Message:** Description of the event or condition
- **Probable Cause:** Likely reason for the log message
- **Recommended Action:** Suggested steps to address the issue
- **Impact:** Effect on system operation

## Log Messages

---

### Log-4001

**Message:** Health monitoring port not configured

**Severity:** Info

**Probable Cause:** The port of health monitoring for this service is not configured

**Recommended Action:** None

**Impact:** Health monitoring for this service is not supported

### Log-4002

**Message:** Starting health monitoring on port %v

**Severity:** Info

**Probable Cause:** Health monitoring started on this port

**Recommended Action:** None

**Impact:** None

### Log-4003

**Message:** Failed to process microservice configuration file

**Severity:** Fatal

**Probable Cause:** File does not exist, or has errors

**Recommended Action:** Contact support

**Impact:** This service will not start

### Log-4004

**Message:** Go Version: [%s], OS/Arch: [%s/%s]

**Severity:** Info

**Probable Cause:** Go version and Architecture information

**Recommended Action:** None

**Impact:** None

### Log-4005

**Message:** Starting microservice [%s]

**Severity:** Info

**Probable Cause:** A microservice is being started

**Recommended Action:** None

**Impact:** None

### Log-4006

**Message:** [%s]: Worker Shutdown started

**Severity:** Info

**Probable Cause:** As part of a service shutdown each worker thread is stopped

**Recommended Action:** None

**Impact:** This service will be unavailable until restarted

### Log-4007

**Message:** [%s]: Worker Shutdown done

**Severity:** Info

**Probable Cause:** This worker thread has successfully stopped

**Recommended Action:** None

**Impact:** This service will be unavailable until restarted

### Log-4008

**Message:** Starting Shutdown of Microservice, received signal:

**Severity:** Info

**Probable Cause:** A Microservice is being shutdown

**Recommended Action:** None

**Impact:** This service will be unavailable until restarted

### Log-4009

**Message:** Completed shutting down all worker threads, exiting

**Severity:** Error

**Probable Cause:** Microservice shutdown completed

**Recommended Action:** None

**Impact:** This service will be unavailable until restarted

### Log-4010

**Message:** [%s]: Worker Started

**Severity:** Info

**Probable Cause:** A new worker thread was started for this service

**Recommended Action:** None

**Impact:** None

## Log-4011

**Message:** Starting Watchdog processing

**Severity:** Info

**Probable Cause:** The watchdog thread is started for this service

**Recommended Action:** None

**Impact:** None

## Log-4012

**Message:** [%s]: Microservice is dead

**Severity:** Error

**Probable Cause:** The microservice is not responding to the watchdog

**Recommended Action:** The service is stopping or may be malfunctioning. Restart the service

**Impact:** The service may no longer be responding

## Log-4013

**Message:** [%s]: Service already dead

**Severity:** Warning

**Probable Cause:** The service was already stopped

**Recommended Action:** None

**Impact:** None

## Log-4014

**Message:** [%s]: Watchdog state unknown

**Severity:** Warning

**Probable Cause:** Incorrect value received in message

**Recommended Action:** Retry the command or configuration, contact support if persistent

**Impact:** Command or config failed to apply and was ignored

## Log-4015

**Message:** Watchdog Starting

**Severity:** Info

**Probable Cause:** The watchdog worker thread is started

**Recommended Action:** None

**Impact:** None

## Log-4016

**Message:** K3S Liveliness check failed

**Severity:** Error

**Probable Cause:** The microservice seems to not be responding

**Recommended Action:** If this issue persists, restart the service

**Impact:** The service is not available

## Log-4017

**Message:** K3S Readiness check failed

**Severity:** Error

**Probable Cause:** The service is still coming up or has failed

**Recommended Action:** If this issue persists, restart the service

**Impact:** The service is not available

## Log-4018

**Message:** Panic

**Severity:** Panic

**Probable Cause:** The service encountered an unrecoverable error

**Recommended Action:** Contact customer Support

**Impact:** The service will be restarted

## Log-4019

**Message:** Fatal error

**Severity:** Fatal

**Probable Cause:** The service encountered an unrecoverable error

**Recommended Action:** Contact customer Support

**Impact:** The service will be restarted

## Log-4020

**Message:** Failed to resolve host IP: %s

**Severity:** Error

**Probable Cause:** A configuration file may be missing

**Recommended Action:** Contact Customer Support

**Impact:** The service may not function correctly

## Log-4021

**Message:** Completed setting up pprof for %v with %v interval, %v allowed archives

**Severity:** Info

**Probable Cause:** Profiling started for service

**Recommended Action:** None

**Impact:** Periodic pprof collection for service

## Log-4022

**Message:** Failed to set up pprof for %v with %v interval, %v allowed archives

**Severity:** Error

**Probable Cause:** Profiling started for service

**Recommended Action:** Contact customer support

**Impact:** Periodic pprof collection for service will not available

## Log-4023

**Message:** Failed to process gNMI/gRPC notification

**Severity:** Error

**Probable Cause:** The notification may have unexpected or invalid data

**Recommended Action:** Contact customer support

**Impact:** The service may not function as expected

### Log-4024

**Message:** Memory read failure

**Severity:** Error

**Probable Cause:** Virtual memory issue

**Recommended Action:** Contact customer support

**Impact:** Inconsistent memory information

### Log-4025

**Message:** High memory usage

**Severity:** Warning

**Probable Cause:** Memory consumption above threshold

**Recommended Action:** Contact customer support

**Impact:** Service may recover or fail after sometime

### Log-4026

**Message:** File read failure

**Severity:** Error

**Probable Cause:** Invalid or inaccessible path/file

**Recommended Action:** Contact customer support

**Impact:** Inconsistent file or disk information

### Log-4027

**Message:** Platform component property processing failed

**Severity:** Error

**Probable Cause:** Invalid or Unexpected platform component key/path

**Recommended Action:** Contact customer support

**Impact:** Service may not function as expected

### Log-4028

**Message:** Requisite flags for db migration app not set; cannot proceed, exiting.

**Severity:** Fatal

**Probable Cause:** Requisite flags for db migration app is not set.

**Recommended Action:** Report the issue to Extreme Networks support

**Impact:** DB migration service launch will fail.

### Log-4029

**Message:** Fatal error

**Severity:** Fatal

**Probable Cause:** DB migration encountered error

**Recommended Action:** Contact customer Support

**Impact:** Service may not function as expected

### Log-4030

**Message:** Microservice [%s] is in ready state

**Severity:** Info

**Probable Cause:** A microservice is started

**Recommended Action:** None

**Impact:** None

### Log-5001

**Message:** Unable to connect to Operational Database

**Severity:** Fatal

**Probable Cause:** Database is down

**Recommended Action:** Check Database status

**Impact:** Service not operational

### Log-5002

**Message:** Service started

**Severity:** Info

**Probable Cause:** Service is starting up

**Recommended Action:** NA

**Impact:** Chassis services becoming available

### Log-5003

**Message:** I2C timeout, please power-cycle chassis, waited for: %v

**Severity:** Error

**Probable Cause:** Service is starting up

**Recommended Action:** Restart the chassis

**Impact:** Chassis unavailable until restarted

### Log-5004

**Message:** Unable to connect to gRPC server, Error: %v

**Severity:** Fatal

**Probable Cause:** The gRPC server could not be found and a connection could not be established

**Recommended Action:** The service will restart automatically

**Impact:** The chassis service will not be available until the service is restarted

### Log-5005

**Message:** gRPC failed with error: %v

**Severity:** Error

**Probable Cause:** A gRPC message failed, the service may be down

**Recommended Action:** The service will restart automatically

**Impact:** The chassis service will not be available until the service is restarted

### Log-5006

**Message:** Failed to initialize microservice

**Severity:** Fatal

**Probable Cause:** One of components needed to start the chassis service is not available

**Recommended Action:** The service will automatically restart

**Impact:** The chassis service is not available until it is restarted

### Log-5007

**Message:** Error getting system uptime %d

**Severity:** Error

**Probable Cause:** Unknown

**Recommended Action:** Try again later, if the problem persists, contact support

**Impact:** System uptime cannot be determined

## Log-5008

**Message:** Error processing event [%s], error [%d]

**Severity:** Error

**Probable Cause:** An unknown event was received

**Recommended Action:** Report the issue to Extreme Networks support

**Impact:** Chassis Manager may not be fully functional

## Log-5009

**Message:** Received empty request

**Severity:** Error

**Probable Cause:** A request with no contents was received

**Recommended Action:** Report the issue to Extreme Networks support

**Impact:** None

## Log-5010

**Message:** Error unmarshalling received request %v

**Severity:** Error

**Probable Cause:** Incompatible message was received

**Recommended Action:** Report the issue to Extreme Networks support

**Impact:** Some Chassis manager functionality may not be available

## Log-5011

**Message:** Unknown message type %v

**Severity:** Error

**Probable Cause:** Chassis Manager is not compatible with this message type

**Recommended Action:** Report the issue to Extreme Networks support

**Impact:** Some Chassis manager functionality may not be available

### Log-5012

**Message:** Failed to Unmarshal message as JSON, error = %v

**Severity:** Error

**Probable Cause:** Chassis Manager is not compatible with this message type

**Recommended Action:** Report the issue to Extreme Networks support

**Impact:** Some Chassis manager functionality may not be available

### Log-5013

**Message:** ActivateResponse returned Failure. Time: %v

**Severity:** Warning

**Probable Cause:** Timeout occurred during communication

**Recommended Action:** Retry the command

**Impact:** Chassis Activate command failed

### Log-5014

**Message:** Failed converting value %v to scalar, continuing with next update

**Severity:** Error

**Probable Cause:** Incorrect value received in message

**Recommended Action:** Retry the command or configuration, contact support if persistent

**Impact:** Command or config failed to apply and was ignored

### Log-5015

**Message:** Shutdown processing: %s

**Severity:** Info

**Probable Cause:** Chassis Service is going down

**Recommended Action:** The chassis is rebooting or being shutdown, or the service is being upgraded

**Impact:** Chassis services will not be available until the service is restarted

### Log-5016

**Message:** System initialization in complete. All services are UP

**Severity:** Info

**Probable Cause:** System Initialization is complete

**Recommended Action:** NA

**Impact:** System is up and running

### Log-5017

**Message:** Firmware update to %s failed. Rolling back to previous firmware

**Severity:** Error

**Probable Cause:** The new firmware did not come up completely

**Recommended Action:** Contact Customer Support

**Impact:** Firmware update failed

### Log-5018

**Message:** Software rollback failed. msg: %s, err: %v

**Severity:** Error

**Probable Cause:** Firmware rollback failed

**Recommended Action:** Contact customer Support

**Impact:** Rollback due to failed firmware update failed

### Log-5019

**Message:** System initialization failed. Firmware %s, last reboot reason %v

**Severity:** Error

**Probable Cause:** TBD

**Recommended Action:** Contact Customer Support

**Impact:** System Initialization Failed

### Log-5020

**Message:** Services %s are not up after %v

**Severity:** Error

**Probable Cause:** System Initialization failed

**Recommended Action:** Contact Customer Support

**Impact:** System Initialization failed

## Log-5021

**Message:** Firmware change Successful. Current Firmware version is %s

**Severity:** Info

**Probable Cause:** Firmware change successful

**Recommended Action:** NA

**Impact:** Firmware changed

## Log-5022

**Message:** Sensor %s High temperature %d exceeds the warning threshold of %d

**Severity:** Error

**Probable Cause:** Thermal Monitoring

**Recommended Action:** NA

**Impact:** Fan speed may increase

## Log-5023

**Message:** Sensor %s High temperature %d exceeds the critical threshold of %d

**Severity:** Error

**Probable Cause:** Thermal Monitoring

**Recommended Action:** NA

**Impact:** Fan speed may increase and the switch may reboot

## Log-5024

**Message:** File %s Read Error %v

**Severity:** Error

**Probable Cause:** OS File Operation Read Error

**Recommended Action:** NA

**Impact:** Value is NULL

### Log-5025

**Message:** Sensor %s Current temperature %d is at or below the warning threshold of %d

**Severity:** Info

**Probable Cause:** Thermal Monitoring

**Recommended Action:** NA

**Impact:** Fan Speed may decrease

### Log-5026

**Message:** Sensor %s Current temperature %d is at or below the critical threshold of %d

**Severity:** Info

**Probable Cause:** Thermal Monitoring

**Recommended Action:** NA

**Impact:** Fan speed may decrease

### Log-5100

**Message:** Unable to Detect the Programming Device, Error: %v

**Severity:** Fatal

**Probable Cause:** Device in Unhealthy state

**Recommended Action:** The system needs to be powered down

**Impact:** The slots and chassis service will not be available until the device is detected

### Log-5201

**Message:** Slot %v Inserted

**Severity:** Info

**Probable Cause:** Bootup or Insertion of the Linecard

**Recommended Action:** NA

**Impact:** Slot becomes available

### Log-5202

**Message:** Slot %v Extracted

**Severity:** Info

**Probable Cause:** Extraction of the Linecard

**Recommended Action:** NA

**Impact:** Slot becomes unavailable

### Log-5203

**Message:** Slot %v Powered Down

**Severity:** Info

**Probable Cause:** Linecard has been powered down

**Recommended Action:** Check ConfigDB For SlotOff

**Impact:** Slot Ports/Interface services are unavailable

### Log-5204

**Message:** Slot %v Powered UP

**Severity:** Info

**Probable Cause:** Linecard has been powered up after removal or using Config

**Recommended Action:** NA

**Impact:** Slot Ports/Interface services are available

### Log-5205

**Message:** Slot %v Failed

**Severity:** Error

**Probable Cause:** Linecard entered a faulty state

**Recommended Action:** Troubleshoot the LC using power off/on, else replace if needed

**Impact:** Slot Ports/Interface services are rendered DOWN

### Log-5300

**Message:** fanEnable(%d): Status: %v, RPM: %v, RPM Percent: %v

**Severity:** Info

**Probable Cause:** A fan has been inserted into the chassis

**Recommended Action:** N/A

**Impact:** A new fan is available

### Log-5301

**Message:** fanFaulty(%d): Cur State: %s: Fan Failed

**Severity:** Warning

**Probable Cause:** A fan has a fault

**Recommended Action:** Check and replace the fan

**Impact:** Faulty fan

### Log-5302

**Message:** fanDeparted(%d): Cur State: %s: Fan extracted

**Severity:** Info

**Probable Cause:** A fan has been removed from the chassis

**Recommended Action:** NA

**Impact:** The removed fan is unavailable

### Log-5303

**Message:** Fan-%d: Airflow direction mismatch

**Severity:** Warning

**Probable Cause:** Fan airflow direction does not match the PSU's airflow direction

**Recommended Action:** Check and replace the fan

**Impact:** Cooling will be impacted

### Log-5400

**Message:** psuEnable(): Psu Id: %d, cur\_state: %s: Admitting PSU

**Severity:** Info

**Probable Cause:** A PSU has been powered up in the chassis

**Recommended Action:** NA

**Impact:** A new PSU has come online

### Log-5401

**Message:** psuFaulty(%d): Cur State: %s: Psu Failed

**Severity:** Warning

**Probable Cause:** A PSU has a fault

**Recommended Action:** Check and replace the PSU

**Impact:** Faulty PSU

### Log-5402

**Message:** psuDeparted(%d): Cur State: %s: Psu Departed

**Severity:** Info

**Probable Cause:** A PSU has been removed from the chassis

**Recommended Action:** N/A

**Impact:** The removed PSU is unavailable

### Log-5403

**Message:** Invalid Psu id specified, skipping...

**Severity:** Error

**Probable Cause:** Invalid PSU id seen

**Recommended Action:** NA

**Impact:** PSU numbering may be wrong

### Log-5404

**Message:** psuPresent(%d): Status: %v

**Severity:** Info

**Probable Cause:** A PSU has been inserted into the chassis

**Recommended Action:** NA

**Impact:** A new PSU is available

### Log-5405

**Message:** PSU-%d: Current airflow direction is %s, setting to %s

**Severity:** Info

**Probable Cause:** Setting the switch airflow direction

**Recommended Action:** NA

**Impact:** Setting the switch airflow direction

### Log-5406

**Message:** PSU-%d: Airflow direction mismatch, existing direction is %s, new PSU's direction is %s

**Severity:** Warning

**Probable Cause:** New PSU's airflow direction does not match the existing PSU's airflow direction

**Recommended Action:** Replace the PSU with the correct airflow direction

**Impact:** Cooling will be impacted

### Log-5407

**Message:** Airflow direction changed from %s, setting it to %s

**Severity:** Info

**Probable Cause:** Airflow direction changed

**Recommended Action:** NA

**Impact:** Switch airflow direction changed

### Log-5408

**Message:** App %s is ready

**Severity:** Info

**Probable Cause:** App is ready

**Recommended Action:** NA

**Impact:** All services within app are ready

### Log-5409

**Message:** App %s is not in ready state

**Severity:** Info

**Probable Cause:** App is not ready

**Recommended Action:** NA

**Impact:** One or more services within app are not ready

### Log-5410

**Message:** System reboot reason %s

**Severity:** Info

**Probable Cause:** Successfully updates the reboot reason

**Recommended Action:** NA

**Impact:** No impact

## Log-6001

**Message:** gRPC request executed successfully.

**Severity:** Info

**Probable Cause:** Indicates that the gRPC request has been executed successfully.

**Recommended Action:** No action is required.

**Impact:** None

## Log-6004

**Message:** ConfigDB handle initialization failed.

**Severity:** Fatal

**Probable Cause:** Indicates that database instance creation failed.

**Recommended Action:** Report the issue to Extreme Networks support

**Impact:** Any config operation or retrieval of state data will be impacted.

## Log-6005

**Message:** StateDB handle initialization failed with error.

**Severity:** Fatal

**Probable Cause:** Indicates that database instance creation failed.

**Recommended Action:** Report the issue to Extreme Networks support

**Impact:** Any config operation or retrieval of state data will be impacted.

## Log-6006

**Message:** Persistent-stateDb handle initialization failed.

**Severity:** Fatal

**Probable Cause:** Indicates that database instance creation failed.

**Recommended Action:** Report the issue to Extreme Networks support

**Impact:** Any config operation or retrieval of state data will be impacted.

### Log-6007

**Message:** Requisite flags for apigw not set; cannot proceed, exiting.

**Severity:** Fatal

**Probable Cause:** Requisite flags for apigw service is not set.

**Recommended Action:** Report the issue to Extreme Networks support

**Impact:** Apigw service launch will fail.

### Log-6008

**Message:** Micro-service configuration failed.

**Severity:** Fatal

**Probable Cause:** Micro-service callback is nil

**Recommended Action:** Report the issue to Extreme Networks support

**Impact:** Apigw dependent services launch will fail.

### Log-6009

**Message:** Failed initializing microservice.

**Severity:** Fatal

**Probable Cause:** Microservice configuration file does not exist, or has errors

**Recommended Action:** Report the issue to Extreme Networks support

**Impact:** This service will not start

### Log-6010

**Message:** Failed to restore default configuration.

**Severity:** Error

**Probable Cause:** Default configuration file does not exist, or has errors

**Recommended Action:** Apply default configuration manually

**Impact:** Loss of default configuration data.

### Log-6011

**Message:** Only interface %v:1 is valid in this port with a QSA adapter plugged in

**Severity:** Warning

**Probable Cause:** QSA adapters support only the first channel

**Recommended Action:** Do not configure channels 2, 3 and 4 on this interface

**Impact:** none

### Log-6012

**Message:** Breakout configuration is not supported on the optic %v

**Severity:** Warning

**Probable Cause:** Breakout configuration not supported with the non-breakout transceivers

**Recommended Action:** Do not configure breakout on this interface

**Impact:** none

### Log-6013

**Message:** Backup config created successfully

**Severity:** Info

**Probable Cause:** Indicates that backup-config file created successfully

**Recommended Action:** No action required.

**Impact:** Backup config created to be used during unfortunate config-corruption.

### Log-6014

**Message:** Backup config created successfully, and it will be applied on next reboot

**Severity:** Info

**Probable Cause:** Indicates that backup-config file created and will be applied on next reboot or config corruption

**Recommended Action:** No action required.

**Impact:** Current configurations will be wiped out and configs from backup-config file will be applied to running-config on next reboot.

## Log-6015

**Message:** Backup config creation failed

**Severity:** Error

**Probable Cause:** Error occurred while creating backup configuration file

**Recommended Action:** Check system resources and try creating backup config again.

**Impact:** No backup config available for restoration in case of config corruption or reboot.

## Log-6016

**Message:** Backup config restored successfully.

**Severity:** Info

**Probable Cause:** Indicates that upon reboot, the backup-config is replayed to running-config successfully.

**Recommended Action:** No action is required.

**Impact:** None

## Log-6017

**Message:** Backup config restore failed.

**Severity:** Error

**Probable Cause:** Indicates that upon reboot, the backup-config replay to running-config failed.

**Recommended Action:** Configure the device to restore the connectivity.

**Impact:** Device comes up with Day-0 configuration.

## Log-6018

**Message:** Apps not ready within timeout during backup-config replay.

**Severity:** Error

**Probable Cause:** One or more applications did not reach INSTALLED status within the 10-minute timeout period after reboot.

**Recommended Action:** Reconfigure the device if required.

**Impact:** Backup-config replay will proceed, but configuration may be partially applied due to unavailable applications.

## Log-6019

**Message:** Physical interfaces not found during backup-config replay.

**Severity:** Error

**Probable Cause:** Physical interface are not created within the timeout period after applications are installed.

**Recommended Action:** Reconfigure the device if required.

**Impact:** Backup-config replay will proceed, but configuration may be partially applied due to unavailable physical interfaces.

## Log-6020

**Message:** Default/Day-0 config successfully restored due to config corruption and backup-config file not available.

**Severity:** Info

**Probable Cause:** Indicates that upon reboot due to config corruption, the backup-config file not found, hence default config restored successfully.

**Recommended Action:** Reconfigure the device.

**Impact:** Device now at default/Day-0 configuration.

## Log-7001

**Message:** Request executed successfully.

**Severity:** Info

**Probable Cause:** Indicates that request has been executed successfully.

**Recommended Action:** No action is required.

**Impact:** None

## Log-7002

**Message:** User authentication is successful.

**Severity:** Info

**Probable Cause:** Indicates that the user is authenticated successfully.

**Recommended Action:** No action is required.

**Impact:** None

### Log-7003

**Message:** Failed to authenticate the user.

**Severity:** Error

**Probable Cause:** Indicates failure to authenticate the user.

**Recommended Action:** Examine the failure reason and make sure correct authentication info is passed.

**Impact:** Authentication failed.

### Log-7004

**Message:** Access token is generated for the user.

**Severity:** Info

**Probable Cause:** Indicates successful generation of access token.

**Recommended Action:** No action is required.

**Impact:** None

### Log-7005

**Message:** Failed to issue access token.

**Severity:** Error

**Probable Cause:** Indicates failure to issue access token.

**Recommended Action:** Examine the failure reason and take appropriate action.

**Impact:** Access token issue failed.

### Log-7006

**Message:** Token validation failed.

**Severity:** Error

**Probable Cause:** Indicates failure to validate the token.

**Recommended Action:** Examine the failure reason and take appropriate action.

**Impact:** Validate token failed.

### Log-7007

**Message:** Failed to authorize the user.

**Severity:** Error

**Probable Cause:** Indicates failure to authorize the user.

**Recommended Action:** Examine the failure reason and take appropriate action.

**Impact:** Authorization failed.

## Log-7008

**Message:** Failed to bring security microservice up as reboot reason not fetched from chassis microservice update.

**Severity:** Error

**Probable Cause:** Failed to fetch reboot reason updated by chassis manager.

**Recommended Action:** Examine whether chassis microservice is up.

**Impact:** Microservice does not come up.

## Log-7009

**Message:** NewClientID cannot be served for any client other than XVM client.

**Severity:** Error

**Probable Cause:** Indicates failure to authorize the user which is not an XVM client.

**Recommended Action:** NewClientID can be used by only XVM client with proper endpoint information to identify as an XVM client.

**Impact:** Authorization failed.

## Log-7010

**Message:** All SSH session with username has been deleted because of user account deletion in system.

**Severity:** Info

**Probable Cause:** Indicates successful deletion of user session.

**Recommended Action:** No action is required.

**Impact:** All active SSH session with this user name will be deleted

## Log-7011

**Message:** User account has been inactive beyond configured warning threshold

**Severity:** Warning

**Probable Cause:** User account has been inactive beyond configured warning threshold

**Recommended Action:** User needs to log in to maintain the account active

**Impact:** User needs to log in to maintain the account active

## Log-7012

**Message:** User account has expired due to inactivity

**Severity:** Error

**Probable Cause:** User account has been inactive beyond configured threshold

**Recommended Action:** To activate the user account, it needs to be unlocked by admin

**Impact:** User account is locked and needs to be unlocked by admin to be able to login

## Log-7013

**Message:** Shadow file was not found

**Severity:** Error

**Probable Cause:** Shadow file was not found in security container

**Recommended Action:** Contact Support

**Impact:** This service may not function as expected

## Log-7014

**Message:** Error updating CLI access token.

**Severity:** Error

**Probable Cause:** Token manager is down.

**Recommended Action:** No action required.

**Impact:** None.

## Log-7015

**Message:** Certificate %s will be expiring in %d days.

**Severity:** Warning

**Probable Cause:** Indicates certificate is nearing expiration.

**Recommended Action:** Plan to renew the mentioned certificate id.

**Impact:** None.

## Log-7016

**Message:** Critical: Certificate %s has expired.

**Severity:** Error

**Probable Cause:** Indicates certificate is no longer valid.

**Recommended Action:** Plan to renew the mentioned certificate id.

**Impact:** New secure connection using this certificate will fail.

## Log-7017

**Message:** Critical: Certificate %s will be valid in future.

**Severity:** Error

**Probable Cause:** Indicates certificate is valid in future.

**Recommended Action:** Plan to sync the time between client and server.

**Impact:** New secure connection using this certificate will fail.

## Log-7018

**Message:** User %s is locked due to %s

**Severity:** Warning

**Probable Cause:** Indicates user is locked.

**Recommended Action:** unlock the user.

**Impact:** login failure.

## Log-7019

**Message:** TLS authentication failed for the user.

**Severity:** Error

**Probable Cause:** Indicates failure to authenticate the user.

**Recommended Action:** Examine the failure reason and make sure correct authentication info is passed.

**Impact:** Authentication failed.

## Log-7020

**Message:** remote Authentication failed for user.

**Severity:** Error

**Probable Cause:** Indicates failure to authenticate the user with Remote Authentication enabled.

**Recommended Action:** Examine the failure reason and make sure correct authentication info is passed.

**Impact:** Authentication failed.

## Log-7021

**Message:** Unlocked user %v successfully.

**Severity:** Info

**Probable Cause:** Indicates user is unlocked.

**Recommended Action:** No action is required

**Impact:** User can login.

## Log-7022

**Message:** Password for user '%s' will be expiring %s.

**Severity:** Warning

**Probable Cause:** Indicates user password is nearing to expiration.

**Recommended Action:** Plan to update the mentioned user password.

**Impact:** None.

## Log-7023

**Message:** Critical: Password for user '%s' has expired.

**Severity:** Error

**Probable Cause:** Indicates user password is no longer valid.

**Recommended Action:** Plan to renew the mentioned user password.

**Impact:** Cannot login without updating the user password.

## Log-7024

**Message:** Password successfully updated for user %v.

**Severity:** Info

**Probable Cause:** Indicates user's password has been updated.

**Recommended Action:** None

**Impact:** User can login with new password.

## Log-7025

**Message:** NTP mode %s.

**Severity:** Info

**Probable Cause:** Indicates NTP mode is updated.

**Recommended Action:** Ensure system clock updated

**Impact:** System clock update

## Log-7026

**Message:** Grub username and password are configured.

**Severity:** Info

**Probable Cause:** Indicates that Grub username and password are configured.

**Recommended Action:** No action is required.

**Impact:** None.

## Log-7027

**Message:** Default Grub password has not been changed yet, please change default password

**Severity:** Info

**Probable Cause:** Indicates that default for Grub username and password are not changed.

**Recommended Action:** Configure Grub username password to change default credentials.

**Impact:** None.

## Log-7028

**Message:** Failed to import certificate.

**Severity:** Error

**Probable Cause:** Indicates that failure occurred during certificate import.

**Recommended Action:** Resolve the error indicated

**Impact:** Operation did not succeed

### Log-7029

**Message:** Successfully imported certificate.

**Severity:** Info

**Probable Cause:** Indicates that certificate import is success.

**Recommended Action:** No action is required

**Impact:** None

### Log-7030

**Message:** Successfully deleted ssl-profile-id.

**Severity:** Info

**Probable Cause:** Indicates that ssl-profile-id deletion is success.

**Recommended Action:** No action is required

**Impact:** None

### Log-7031

**Message:** Failed to delete ssl-profile-id.

**Severity:** Error

**Probable Cause:** Indicates that command failed to execute successfully.

**Recommended Action:** Resolve the error indicated

**Impact:** Operation did not succeed

### Log-7032

**Message:** Certificate is associated with endpoints

**Severity:** Warning

**Probable Cause:** Indicates that certificate is being used.

**Recommended Action:** services using certificates might need to restart

**Impact:** None

### Log-7033

**Message:** Successfully generated certificate for ssl-reserved-generated.

**Severity:** Info

**Probable Cause:** Indicates that command executed successfully.

**Recommended Action:** No action is required

**Impact:** None

### Log-7034

**Message:** Successfully Imported application certificate without key option.

**Severity:** Info

**Probable Cause:** Indicates that command executed successfully.

**Recommended Action:** No action is required

**Impact:** None

### Log-7035

**Message:** Password for user '%s' will be expiring today.

**Severity:** Warning

**Probable Cause:** Indicates user password is expiring today

**Recommended Action:** Update the mentioned user password today.

**Impact:** None.

### Log-7036

**Message:** Account for user '%v' has been deleted.

**Severity:** Info

**Probable Cause:** Indicates user account was deleted.

**Recommended Action:** No action is required.

**Impact:** User cannot login until re-created.

### Log-7037

**Message:** Created user account %v with %v authorization.

**Severity:** Info

**Probable Cause:** Indicates user account was added with admin/user authorization.

**Recommended Action:** No action is required.

**Impact:** User can login with the new account.

## Log-7038

**Message:** Restarted SSH server successfully.

**Severity:** Info

**Probable Cause:** Indicates that SSH service restart command executed successfully.

**Recommended Action:** No action is required.

**Impact:** None

## Log-7039

**Message:** TLS minimum version configuration applied successfully.

**Severity:** Info

**Probable Cause:** Indicates that the TLS minimum version command was configured successfully.

**Recommended Action:** No action required.

**Impact:** All TLS-enabled services will use the configured minimum version during the handshake.

## Log-7040

**Message:** TLS minimum version configuration removed successfully.

**Severity:** Info

**Probable Cause:** Indicates that the TLS minimum version command was removed successfully.

**Recommended Action:** No action required.

**Impact:** All TLS-enabled services will revert to using the default minimum version during the handshake.

## Log-7041

**Message:** TLS minimum version configuration failed.

**Severity:** Error

**Probable Cause:** Indicates that the TLS minimum version command could not be configured.

**Recommended Action:** No action required.

**Impact:** All TLS-enabled services will continue using the default minimum version during the handshake.

## Log-7042

**Message:** Service-specific TLS minimum version configuration applied successfully.

**Severity:** Info

**Probable Cause:** Indicates that a service-specific TLS minimum version command was configured successfully.

**Recommended Action:** No action required.

**Impact:** The specified service will use its configured minimum TLS version during the handshake, overriding the global setting.

## Log-7043

**Message:** Service-specific TLS minimum version configuration removed successfully.

**Severity:** Info

**Probable Cause:** Indicates that the service-specific TLS minimum version command was removed successfully.

**Recommended Action:** No action required.

**Impact:** The service will fall back to using the global minimum TLS version during the handshake.

## Log-7044

**Message:** Service-specific TLS minimum version configuration failed.

**Severity:** Error

**Probable Cause:** Indicates that the service-specific TLS minimum version command could not be configured.

**Recommended Action:** No action required.

**Impact:** The service will fall back to using the global minimum TLS version during the handshake.

### Log-7045

**Message:** License EULA accepted for %s feature.

**Severity:** Info

**Probable Cause:** Indicates that license EULA has been accepted successfully.

**Recommended Action:** No action is required.

**Impact:** None

### Log-7046

**Message:** License EULA declined for %s feature.

**Severity:** Info

**Probable Cause:** Indicates that license EULA has been declined.

**Recommended Action:** No action is required.

**Impact:** None

### Log-7047

**Message:** EULA acceptance period is over, please purchase a valid license. Ignore if already purchased.

**Severity:** Info

**Probable Cause:** Indicates that EULA acceptance has expired.

**Recommended Action:** Purchase a valid license, ignore if purchased

**Impact:** None

### Log-8001

**Message:** Command executed successfully.

**Severity:** Info

**Probable Cause:** Indicates that command has been executed successfully.

**Recommended Action:** No action is required.

**Impact:** None

### Log-8002

**Message:** Firmware update file downloaded.

**Severity:** Info

**Probable Cause:** Indicates that command has been executed successfully.

**Recommended Action:** No action is required.

**Impact:** None

### Log-8003

**Message:** Failed to retrieve file.

**Severity:** Error

**Probable Cause:** Indicates that command failed to execute successfully.

**Recommended Action:** Resolve the error indicated

**Impact:** Operation did not succeed

### Log-8004

**Message:** Activating firmware. System will reboot if successful.

**Severity:** Info

**Probable Cause:** Indicates that command has been executed successfully.

**Recommended Action:** No action is required

**Impact:** None

### Log-8005

**Message:** Failed to activate firmware.

**Severity:** Error

**Probable Cause:** Indicates that command failed to execute successfully.

**Recommended Action:** Resolve the error indicated

**Impact:** Operation did not succeed

### Log-8006

**Message:** Rolling back firmware to previous image. System will reboot if successful.

**Severity:** Info

**Probable Cause:** Indicates that command has been executed successfully.

**Recommended Action:** No action is required

**Impact:** None

### Log-8007

**Message:** Failed to rollback firmware.

**Severity:** Error

**Probable Cause:** Indicates that command failed to execute successfully.

**Recommended Action:** Resolve the error indicated

**Impact:** Operation did not succeed

### Log-8008

**Message:** Failed to resolve host.

**Severity:** Error

**Probable Cause:** Indicates that command failed to execute successfully.

**Recommended Action:** Resolve the error indicated

**Impact:** Operation did not succeed

### Log-8009

**Message:** Failed to import https certificate.

**Severity:** Error

**Probable Cause:** Indicates that command failed to execute successfully.

**Recommended Action:** Resolve the error indicated

**Impact:** Operation did not succeed

### Log-8010

**Message:** Successfully imported https certificate.

**Severity:** Info

**Probable Cause:** Indicates that command executed successfully.

**Recommended Action:** No action is required

**Impact:** None

### Log-8011

**Message:** Successfully committed the firmware.

**Severity:** Info

**Probable Cause:** Indicates that command executed successfully.

**Recommended Action:** No action is required

**Impact:** None

### Log-8012

**Message:** The file downloaded.

**Severity:** Info

**Probable Cause:** Indicates that command has been executed successfully.

**Recommended Action:** No action is required.

**Impact:** None

### Log-8013

**Message:** Successfully started bash shell.

**Severity:** Info

**Probable Cause:** Indicates that command executed successfully.

**Recommended Action:** No action is required.

**Impact:** None

### Log-8014

**Message:** Successfully exited bash shell.

**Severity:** Info

**Probable Cause:** Indicates that command executed successfully.

**Recommended Action:** No action is required.

**Impact:** None

### Log-8015

**Message:** Restarted SSH server successfully.

**Severity:** Info

**Probable Cause:** Indicates that SSH service restart command executed successfully.

**Recommended Action:** No action is required.

**Impact:** None

## Log-8016

**Message:** Backup config created successfully

**Severity:** Info

**Probable Cause:** Indicates that backup-config file created successfully

**Recommended Action:** No action required.

**Impact:** Backup config created to be used during unfortunate config-corruption.

## Log-8017

**Message:** Backup config created successfully, and it will be applied on next reboot

**Severity:** Info

**Probable Cause:** Indicates that backup-config file created and will be applied on next reboot or config corruption

**Recommended Action:** No action required.

**Impact:** Current configurations will be wiped out and configs from backup-config file will be applied to running-config on next reboot.

## Log-8018

**Message:** Backup config creation failed

**Severity:** Error

**Probable Cause:** Error occurred while creating backup configuration file

**Recommended Action:** Check system resources and try creating backup config again.

**Impact:** No backup config available for restoration in case of config corruption or reboot.

## Log-8019

**Message:** Backup config copied to destination successfully

**Severity:** Info

**Probable Cause:** Indicates that backup-config file copied to destination successfully

**Recommended Action:** No action required.

**Impact:** None

### Log-9001

**Message:** Error during Initialize

**Severity:** Error

**Probable Cause:** Service is starting up

**Recommended Action:** Restart the BGP Microservice

**Impact:** BGP Microservice unavailable until restart

### Log-9002

**Message:** Service started

**Severity:** Info

**Probable Cause:** Service is starting up

**Recommended Action:** NA

**Impact:** BGP services becoming available

### Log-9003

**Message:** Duplicate Attribute Error

**Severity:** Error

**Probable Cause:** Update Message received duplicate attribute

**Recommended Action:** NA

**Impact:** Routes are ignored

### Log-9004

**Message:** Attribute Error

**Severity:** Error

**Probable Cause:** Update Message received erroneous attribute

**Recommended Action:** NA

**Impact:** Routes are ignored

### Log-9005

**Message:** Attribute Info

**Severity:** Error

**Probable Cause:** Update Message attribute info

**Recommended Action:** NA

**Impact:** none

### Log-9006

**Message:** Attribute VRF Error

**Severity:** Error

**Probable Cause:** VRF not Created attribute

**Recommended Action:** create VRF and address family

**Impact:** Routes are ignored

### Log-9007

**Message:** Error during storing attribute

**Severity:** Error

**Probable Cause:** Internal error

**Recommended Action:** Contact Customer Support

**Impact:** Routes are ignored

### Log-9008

**Message:** BGP Neighbor state Info

**Severity:** Info

**Probable Cause:** NA

**Recommended Action:** none

**Impact:** none

### Log-9009

**Message:** BGP neighbor FSM Event queue error

**Severity:** Error

**Probable Cause:** Out of Memory

**Recommended Action:** Contact Customer Support

**Impact:** BGP neighbor will not be operational

## Log-9010

**Message:** BGP neighbor TCP error

**Severity:** Error

**Probable Cause:** TCP socket error

**Recommended Action:** Check the reachability and config

**Impact:** BGP neighbor will not be operational

## Log-9011

**Message:** BGP neighbor OpenMsg error

**Severity:** Error

**Probable Cause:** Error during OpenMsg processing error

**Recommended Action:** Check BGP config

**Impact:** BGP neighbor will not be operational

## Log-9012

**Message:** BGP Update Msg Error

**Severity:** Error

**Probable Cause:** Error during Update Msg processing error

**Recommended Action:** Contact Customer Support

**Impact:** Ignore Update message

## Log-9013

**Message:** BGP Keepalive Msg Error

**Severity:** Error

**Probable Cause:** Error during Keepalive Msg processing error

**Recommended Action:** Contact Customer Support

**Impact:** BGP Neighbor might go down

## Log-9014

**Message:** EVPN route table error

**Severity:** Error

**Probable Cause:** Error while initializing the EVPN table

**Recommended Action:** Contact Customer Support

**Impact:** BGP EVPN Service not available

## Log-9015

**Message:** EVPN route error

**Severity:** Error

**Probable Cause:** Error while processing EVPN route error

**Recommended Action:** Contact Customer Support

**Impact:** BGP EVPN route not acceptable

## Log-9016

**Message:** TCP error

**Severity:** Error

**Probable Cause:** TCP socket error

**Recommended Action:** Contact Customer Support

**Impact:** BGP Neighbor will go down

## Log-9017

**Message:** TCP Info

**Severity:** Info

**Probable Cause:** TCP Info

**Recommended Action:** none

**Impact:** none

## Log-9018

**Message:** Neighbor TXRX channel error

**Severity:** Error

**Probable Cause:** Neighbor TXRX channel error

**Recommended Action:** Contact Customer Support

**Impact:** Neighbor session might go down

## Log-9019

**Message:** Nexthop attribute error

**Severity:** Error

**Probable Cause:** Nexthop attribute error

**Recommended Action:** Contact Customer Support

**Impact:** Routes may not be acceptable

## Log-9020

**Message:** Duplicate Nexthop attribute

**Severity:** Error

**Probable Cause:** Duplicate Nexthop attribute

**Recommended Action:** Check the configuration on the neighbor

**Impact:** BGP session might go down

## Log-9021

**Message:** Neighbor Info

**Severity:** Info

**Probable Cause:** none

**Recommended Action:** none

**Impact:** none

## Log-9022

**Message:** General Error

**Severity:** Error

**Probable Cause:** Internal error

**Recommended Action:** Contact Customer Support

**Impact:** Unknown

### Log-9023

**Message:** Neighbor Config Error

**Severity:** Error

**Probable Cause:** Internal error

**Recommended Action:** Contact Customer Support

**Impact:** Unknown

### Log-9024

**Message:** Neighbor Self Error

**Severity:** Error

**Probable Cause:** Internal error

**Recommended Action:** Contact Customer Support

**Impact:** BGP route will not be installed to RIB

### Log-9025

**Message:** BGP EVPN attribute Error

**Severity:** Error

**Probable Cause:** BGP EVPN attribute Error

**Recommended Action:** Contact Customer Support

**Impact:** BGP route will not be acceptable

### Log-9026

**Message:** BGP Update message Error

**Severity:** Error

**Probable Cause:** BGP Update message Error

**Recommended Action:** Check BGP config

**Impact:** BGP neighbor might go down

### Log-9030

**Message:** Error occurred during mgmt-svc notification handling

**Severity:** Error

**Probable Cause:** Mgmt-Svc Error while parsing ygs or communication failure with CDB or SDB

**Recommended Action:** Contact Customer Support

**Impact:** Config or State notification may not be accepted

### Log-9031

**Message:** mgmt-svc notification information

**Severity:** Info

**Probable Cause:** Mgmt-Svc notification information

**Recommended Action:** NA

**Impact:** none

### Log-9040

**Message:** DebugServer information

**Severity:** Info

**Probable Cause:** DebugServer information

**Recommended Action:** NA

**Impact:** none

### Log-9041

**Message:** BGP Service shutting down

**Severity:** Info

**Probable Cause:** Graceful shutdown

**Recommended Action:** NA

**Impact:** none

### Log-9042

**Message:** Inconsistent Route

**Severity:** Error

**Probable Cause:** Old Route Information not cleaned up

**Recommended Action:** NA

**Impact:** Stale Route continue to exist

## Log-12001

**Message:** Requisite flags for gateway service not set; cannot proceed, exiting.

**Severity:** Fatal

**Probable Cause:** Requisite flags for gateway service is not set.

**Recommended Action:** Report the issue to Extreme Networks support

**Impact:** Gateway service launch will fail.

## Log-12002

**Message:** gRPC server %s listening on address:%s, VRF name:%s

**Severity:** Info

**Probable Cause:** gRPC server connection status.

**Recommended Action:** No action required

**Impact:** gRPC server is ready to accept RPC API requests.

## Log-12003

**Message:** gRPC server %s terminated, error:%v

**Severity:** Error

**Probable Cause:** gRPC server termination.

**Recommended Action:** No action required

**Impact:** External communication to clients will be disrupted.

## Log-12004

**Message:** Failed to start gRPC server %s, error:%v

**Severity:** Error

**Probable Cause:** Enabling of gRPC server failed.

**Recommended Action:** Depending on error, require corrective actions

**Impact:** gRPC server is not ready to accept RPC API requests.

### Log-13001

**Message:** OnlpServer- GetHostName: %v

**Severity:** Info

**Probable Cause:** Received Host name

**Recommended Action:** NA

**Impact:** NA

### Log-13002

**Message:** OnlpServer- SetHostName: %v

**Severity:** Info

**Probable Cause:** Setting Host name

**Recommended Action:** NA

**Impact:** NA

### Log-13003

**Message:** Error in missing set host name request %v

**Severity:** Error

**Probable Cause:** Missing Set Host name request

**Recommended Action:** NA

**Impact:** No impact

### Log-13004

**Message:** Error in missing set host name %v

**Severity:** Error

**Probable Cause:** Missing Set Host name

**Recommended Action:** NA

**Impact:** No impact

### Log-13005

**Message:** SetHostName: Failed on fetching current hostname: %v

**Severity:** Error

**Probable Cause:** Unable to fetch Host name

**Recommended Action:** NA

**Impact:** No impact

## Log-13006

**Message:** SetHostName: Failed on updateEtcHosts: %v

**Severity:** Error

**Probable Cause:** Failed to update Host name to EtcHosts

**Recommended Action:** NA

**Impact:** No impact

## Log-13007

**Message:** SetHostName: Failed on hostnamectl: %v

**Severity:** Error

**Probable Cause:** Unable to set hostname using hostnamectl

**Recommended Action:** NA

**Impact:** No impact

## Log-13008

**Message:** SystemRebootReasonGet(): Reason [%d]

**Severity:** Info

**Probable Cause:** System Reboot Reason

**Recommended Action:** NA

**Impact:** No impact

## Log-13009

**Message:** SystemRebootReasonSet(): Reason [%d]

**Severity:** Info

**Probable Cause:** Setting systemRebootReason

**Recommended Action:** NA

**Impact:** No impact

### Log-13010

**Message:** Saving reboot reason

**Severity:** Info

**Probable Cause:** Saving reboot reason

**Recommended Action:** NA

**Impact:** No impact

### Log-13011

**Message:** Shutting down MSes now....

**Severity:** Info

**Probable Cause:** Shutting down the Microservices

**Recommended Action:** NA

**Impact:** No impact

### Log-13012

**Message:** Shutting down MSes completed....

**Severity:** Info

**Probable Cause:** Completed Shutting down MSes

**Recommended Action:** NA

**Impact:** No impact

### Log-13013

**Message:** Event for system led when reboot

**Severity:** Info

**Probable Cause:** Event for system led when reboot

**Recommended Action:** NA

**Impact:** No impact

### Log-13014

**Message:** Rebooting the system

**Severity:** Info

**Probable Cause:** Rebooting the system

**Recommended Action:** NA

**Impact:** No impact

### Log-13015

**Message:** MsRebootReasonGet(): MS Reason [%s]

**Severity:** Info

**Probable Cause:** Getting MSReboot Reason

**Recommended Action:** NA

**Impact:** No impact

### Log-13016

**Message:** UpdateMsList() deleted app: %v, updated List %v

**Severity:** Info

**Probable Cause:** Updating Microservices list

**Recommended Action:** NA

**Impact:** No impact

### Log-13017

**Message:** UpdateMsList() added app: %v, updated List %v

**Severity:** Info

**Probable Cause:** Updating the Microservice list after deletion of app

**Recommended Action:** NA

**Impact:** No impact

### Log-13018

**Message:** addMsList(): Failed to get app services %v

**Severity:** Error

**Probable Cause:** Unable to get app services from addMsList

**Recommended Action:** NA

**Impact:** No impact

### Log-13019

**Message:** deleteMsList(): Error: app services %s does not exist

**Severity:** Info

**Probable Cause:** App services does not exist

**Recommended Action:** NA

**Impact:** No impact

### Log-13020

**Message:** getAllMicroServices: Error executing service\_image %v

**Severity:** Error

**Probable Cause:** Error in executing service image

**Recommended Action:** NA

**Impact:** No impact

### Log-13021

**Message:** cannot open tarfile: %v

**Severity:** Error

**Probable Cause:** Unable to open tarfile

**Recommended Action:** NA

**Impact:** No impact

### Log-13022

**Message:** certs: failed to close file fd, err =%v

**Severity:** Error

**Probable Cause:** Unable to close the json file

**Recommended Action:** NA

**Impact:** No impact

### Log-13023

**Message:** gzip failed: %v in getMsVersionFromFile

**Severity:** Error

**Probable Cause:** Unable to unzip the file

**Recommended Action:** NA

**Impact:** No impact

### Log-13024

**Message:** error with tarReader: %v

**Severity:** Error

**Probable Cause:** Error in tar Reader

**Recommended Action:** NA

**Impact:** No impact

### Log-13025

**Message:** failed to read hostname: %v

**Severity:** Error

**Probable Cause:** Unable to read host name

**Recommended Action:** NA

**Impact:** No impact

### Log-13026

**Message:** Create file failed %v

**Severity:** Error

**Probable Cause:** Failed to create a file

**Recommended Action:** NA

**Impact:** No impact

### Log-16001

**Message:** An unrecoverable configuration database error (config corruption) detected, rebooting the device

**Severity:** Error

**Probable Cause:** Configuration database corruption.

**Recommended Action:** No action required. Take a backup of a stable config to avoid manual config-restore in future.

**Impact:** Device reboots.

### Log-16002

**Message:** Config DB corruption, backup-config found, restoring from backup configuration.

**Severity:** Warning

**Probable Cause:** Configuration DB corrupted and backup-config file found.

**Recommended Action:** No action required.

**Impact:** Device reboots and backup-config replayed to running-config.

### Log-16003

**Message:** Config DB corruption, no backup configuration found, restoring default configuration.

**Severity:** Error

**Probable Cause:** Configuration DB corrupted and no backup-config file found.

**Recommended Action:** Configure the device to restore the connectivity. And take the backup of a stable config to avoid manual config-restore in future.

**Impact:** Device comes up with default configuration.

### Log-16004

**Message:** Config DB corruption, failed to reboot the device.

**Severity:** Error

**Probable Cause:** Failed to reboot the device on Config data corruption.

**Recommended Action:** Manually reboot the device.

**Impact:** Device in bad state till rebooted.

### Log-17001

**Message:** Error during service Initialize

**Severity:** Error

**Probable Cause:** Not enough system resource

**Recommended Action:** Please Contact Customer Support

**Impact:** service will be unavailable

### Log-17002

**Message:** Error occurred during management service notification handling

**Severity:** Error

**Probable Cause:** Failure in communication with management service

**Recommended Action:** Please Contact Customer Support

**Impact:** Config or State notification may not be accepted

### Log-17003

**Message:** Error during internal DB operation

**Severity:** Error

**Probable Cause:** Internal Error

**Recommended Action:** Please Contact Customer Support

**Impact:** service might misbehave in related scenarios

### Log-17004

**Message:** Error during Publish State Info

**Severity:** Error

**Probable Cause:** Not enough system resource

**Recommended Action:** Please Contact Customer Support

**Impact:** Management State Info may be out of Sync

### Log-17005

**Message:** service shutting down

**Severity:** Info

**Probable Cause:** graceful shutdown

**Recommended Action:** NA

**Impact:** none

### Log-17006

**Message:** Error during service Initialize

**Severity:** Error

**Probable Cause:** service is starting up

**Recommended Action:** restart the service

**Impact:** service will be unavailable until restart

### Log-17007

**Message:** service is ready

**Severity:** Info

**Probable Cause:** service successfully started/restarted

**Recommended Action:** NA

**Impact:** none

### Log-17008

**Message:** Error during communication with Clients

**Severity:** Error

**Probable Cause:** Failure in GRPC communication or Compatibility Issues

**Recommended Action:** Please Contact Customer Support

**Impact:** client communications will be impacted

### Log-17009

**Message:** MLAG Keepalives with Peer %v Primary:%v Secondary:%v

**Severity:** Info

**Probable Cause:** MLAG Keepalives Status

**Recommended Action:** NA

**Impact:** none

### Log-17010

**Message:** MLAG Interface %v Remote State: %v

**Severity:** Info

**Probable Cause:** MLAG Interface Remote State

**Recommended Action:** NA

**Impact:** none

### Log-17011

**Message:** MLAG Peer %v is operationally %v

**Severity:** Info

**Probable Cause:** MLAG Peer Status

**Recommended Action:** NA

**Impact:** none

### Log-17012

**Message:** MLAG Peer %v MCP State operationally %v

**Severity:** Info

**Probable Cause:** MCP Status

**Recommended Action:** NA

**Impact:** none

### Log-17013

**Message:** Maintenance Mode is %v on MLAG Peer %v

**Severity:** Info

**Probable Cause:** Maintenance Mode Status

**Recommended Action:** NA

**Impact:** none

### Log-17014

**Message:** MLAG Peer %v is %v

**Severity:** Info

**Probable Cause:** MLAG Peer Health Status

**Recommended Action:** NA

**Impact:** none

### Log-17015

**Message:** MLAG Peer %v is deleted

**Severity:** Info

**Probable Cause:** MLAG Peer deleted

**Recommended Action:** NA

**Impact:** none

### Log-17016

**Message:** Timer %v Started for %v Seconds

**Severity:** Info

**Probable Cause:** Specified timer was started for a set duration.

**Recommended Action:** NA

**Impact:** none

### Log-17017

**Message:** Timer %v Expired

**Severity:** Info

**Probable Cause:** Specified timer expired

**Recommended Action:** NA

**Impact:** none

### Log-17018

**Message:** Timer %v Stopped

**Severity:** Info

**Probable Cause:** Specified timer stopped due to a triggered event

**Recommended Action:** NA

**Impact:** none

### Log-18005

**Message:** Error: Failed to insert to hardware : %+v %v

**Severity:** Error

**Probable Cause:** Hardware table programming

**Recommended Action:** Report the issue to Extreme Networks support

**Impact:** Ingress ACLs for PBD will not work

## Log-19017

**Message:** Maximum limit of %d Pcap files already created, Remove old Pcap files to continue.!!

**Severity:** Warning

**Probable Cause:** Maximum number of supported PCAP files are already created.

**Recommended Action:** If it is needed to continue packet capture, delete old PCAP files. Else remove all onboard PCAP and ACL logging configurations.

**Impact:** There will not be any impact till critical limit is reached. This message is just a warning that critical limit will be reached soon

## Log-20001

**Message:** Error during classifier initialize.

**Severity:** Error

**Probable Cause:** Service failed to come up.

**Recommended Action:** Please contact customer support.

**Impact:** Classifiers services will be unavailable.

## Log-20002

**Message:** Error during classifier's debug server initialize.

**Severity:** Error

**Probable Cause:** Classifier's debug server failed to come up.

**Recommended Action:** Please contact customer support.

**Impact:** Service debug CLI will be unavailable.

## Log-20003

**Message:** Error during QoS initialize.

**Severity:** Error

**Probable Cause:** ID allocation failed.

**Recommended Action:** Please contact customer support.

**Impact:** QoS feature will be unavailable.

### Log-20004

**Message:** Error during ACL initialize

**Severity:** Error

**Probable Cause:** Initial config sync from data bases failed.

**Recommended Action:** Remove all ACL configuration, restart classifier and re-configure. Also please contact customer support.

**Impact:** ACL service may misbehave.

### Log-20005

**Message:** Error during BD management initialize

**Severity:** Error

**Probable Cause:** Initial config sync from data bases failed.

**Recommended Action:** Restart classifier again. Also please contact customer support.

**Impact:** Classifiers services may misbehave.

### Log-20006

**Message:** Error during interface management initialize

**Severity:** Error

**Probable Cause:** Initial config sync from data bases failed.

**Recommended Action:** Restart classifier again. Also please contact customer support.

**Impact:** Classifiers services may misbehave.

### Log-24001

**Message:** Packet management service initialization failed

**Severity:** Fatal

**Probable Cause:** Packet manager microservice failed to start

**Recommended Action:** Report the issue to Extreme Networks support

**Impact:** CPU packet management not operational on the device

### Log-24003

**Message:** Packet Transmit service initialization failed

**Severity:** Fatal

**Probable Cause:** Packet manager failed to start server

**Recommended Action:** Report the issue to Extreme Networks support

**Impact:** CPU packet management not operational on the device

### Log-24004

**Message:** Client service connection to packet management is down

**Severity:** Error

**Probable Cause:** Client stream to packet manager closed

**Recommended Action:** Report the issue to Extreme Networks support

**Impact:** CPU packet management for service temporarily not operational

### Log-24005

**Message:** Client registration to receive CPU packets failed

**Severity:** Error

**Probable Cause:** Client registration type unknown

**Recommended Action:** Report the issue to Extreme Networks support

**Impact:** CPU packet management for client service not operational

### Log-24006

**Message:** Packet Receive service failed, re-establishing connection

**Severity:** Error

**Probable Cause:** Packet receive handling error, re-establishing connection

**Recommended Action:** Report the issue to Extreme Networks support if re-connection fails

**Impact:** CPU packet management temporarily not operational on the device

### Log-24007

**Message:** Client registered to packet management service

**Severity:** Info

**Probable Cause:** Client stream to packet manager successful

**Recommended Action:** None

**Impact:** None

### Log-24008

**Message:** Packet management service Ready

**Severity:** Info

**Probable Cause:** Packet manager microservice started

**Recommended Action:** None

**Impact:** None

### Log-24009

**Message:** Software Packet transmit/receive service ready

**Severity:** Info

**Probable Cause:** CPU port connection successful

**Recommended Action:** None

**Impact:** None

### Log-24010

**Message:** Packet management service is waiting for chassis Online

**Severity:** Info

**Probable Cause:** Chassis is not yet online

**Recommended Action:** None

**Impact:** None

### Log-24011

**Message:** Packet management service is unable to get chassis status

**Severity:** Fatal

**Probable Cause:** Mgmtsvc API GW connection failed

**Recommended Action:** Report the issue to Extreme Networks support

**Impact:** CPU packet management not operational on the device

### Log-24012

**Message:** Packet management service is unable to identify platform

**Severity:** Fatal

**Probable Cause:** Unable to read platform name from StateDB

**Recommended Action:** Report the issue to Extreme Networks support

**Impact:** CPU packet management not operational on the device

### Log-24013

**Message:** Chassis status online

**Severity:** Info

**Probable Cause:** Received chassis status online

**Recommended Action:** None

**Impact:** None

### Log-24014

**Message:** Failure while reading packets from CPU, re-establishing connection

**Severity:** Error

**Probable Cause:** Error reading from CPU, re-connecting to CPU port

**Recommended Action:** Report the issue to Extreme Networks support if re-connection fails

**Impact:** CPU packet management temporarily not operational on the device

### Log-24015

**Message:** Temporary failure in transmitting packets from software

**Severity:** Error

**Probable Cause:** Socket full, unable to send packets to CPU port

**Recommended Action:** None

**Impact:** Some Packets transmitted from software dropped

### Log-24016

**Message:** Unable to transmit packets from software, reconnecting to CPU port

**Severity:** Error

**Probable Cause:** Socket error, reconnecting to CPU port

**Recommended Action:** Report the issue to Extreme Networks support

**Impact:** CPU packet management temporarily not operational on the device

### Log-24017

**Message:** Aborting Packet management service

**Severity:** Fatal

**Probable Cause:** Permanent failure in reading/writing to CPU port

**Recommended Action:** Report the issue to Extreme Networks support

**Impact:** CPU packet management not operational on the device

### Log-24018

**Message:** Packet management service is shutting down

**Severity:** Fatal

**Probable Cause:** Packet manager microservice restart

**Recommended Action:** Report the issue to Extreme Networks support

**Impact:** CPU packet management not operational on the device

### Log-25001

**Message:** Init failed - Didn't receive Platform ready !

**Severity:** Fatal

**Probable Cause:** Platform not ready

**Recommended Action:** Check stratum and tierra svc status or restart the system

**Impact:** Service not operational

### Log-25002

**Message:** Microservice Init failed

**Severity:** Fatal

**Probable Cause:** Microservice failed to start

**Recommended Action:** Report the issue to Extreme Networks support

**Impact:** Service not operational

### Log-25003

**Message:** Management interface failed

**Severity:** Error

**Probable Cause:** Management interface creation failed

**Recommended Action:** Report the issue to Extreme Networks support

**Impact:** Management interface not operational

### Log-25004

**Message:** HAL function failed

**Severity:** Error

**Probable Cause:** Failure to send message to HAL

**Recommended Action:** Report the issue to Extreme Networks support

**Impact:** Some forwarding feature may not function

### Log-25005

**Message:** DB Operation failed

**Severity:** Error

**Probable Cause:** DB Operation failed

**Recommended Action:** Report the issue to Extreme Networks support

**Impact:** Interface not operational

### Log-25006

**Message:** Interface config replay failed

**Severity:** Error

**Probable Cause:** Mgmtsvc apigw did not respond or error in response

**Recommended Action:** Report the issue to Extreme Networks support

**Impact:** Interface not operational

### Log-25007

**Message:** Interface config replay failed

**Severity:** Error

**Probable Cause:** Mgmtsvc apigw did not respond or error in response

**Recommended Action:** Report the issue to Extreme Networks support

**Impact:** Interface not operational

### Log-25008

**Message:** Failed to Unmarshal message

**Severity:** Error

**Probable Cause:** Interface Manager is not compatible with this message type

**Recommended Action:** Report the issue to Extreme Networks support

**Impact:** Some interface manager functionality may not be available

### Log-25009

**Message:** Failed to get Chassis MAC

**Severity:** Error

**Probable Cause:** Chassis Init might have failed

**Recommended Action:** Report the issue to Extreme Networks support

**Impact:** Interface not operational

### Log-25010

**Message:** Transpose of GNMI notification failed

**Severity:** Error

**Probable Cause:** Interface Manager is not compatible with this message type

**Recommended Action:** Report the issue to Extreme Networks support

**Impact:** Some interface manager functionality may not be available

### Log-25011

**Message:** Conversion of values from GNMI failed

**Severity:** Error

**Probable Cause:** Interface Manager is not compatible with the value

**Recommended Action:** Report the issue to Extreme Networks support

**Impact:** Some interface manager functionality may not be available

### Log-25012

**Message:** Mgmtsvc API GW connection failed

**Severity:** Error

**Probable Cause:** Mgmtsvc API GW down

**Recommended Action:** Report the issue to Extreme Networks support

**Impact:** Some interface manager functionality may not be available

### Log-25013

**Message:** Interface %v Operationally UP

**Severity:** Info

**Probable Cause:** Interface operationally UP

**Recommended Action:** None

**Impact:** None

### Log-25014

**Message:** Interface %v Operationally DOWN

**Severity:** Info

**Probable Cause:** Interface operationally DOWN

**Recommended Action:** None

**Impact:** None

### Log-25015

**Message:** Interface %v Admin UP

**Severity:** Info

**Probable Cause:** Interface Admin UP

**Recommended Action:** None

**Impact:** None

### Log-25016

**Message:** Interface %v Admin DOWN

**Severity:** Info

**Probable Cause:** Interface Admin DOWN

**Recommended Action:** None

**Impact:** None

### Log-25017

**Message:** Interface message handler Init failed

**Severity:** Error

**Probable Cause:** Init failure

**Recommended Action:** Report the issue to Extreme Networks support

**Impact:** Some interface manager functionality may not be available

### Log-25018

**Message:** Kernel programming failed

**Severity:** Error

**Probable Cause:** Kernel programming failure

**Recommended Action:** Report the issue to Extreme Networks support

**Impact:** Some interface manager functionality may not be available

### Log-25019

**Message:** Media may not be breakout compatible

**Severity:** Error

**Probable Cause:** Either the media does not support breakout or media is not supported by Extreme Networks

**Recommended Action:** Report the issue to Extreme Networks support if link does not come up

**Impact:** Link may not come up

### Log-25020

**Message:** Interface %v speed set to %v

**Severity:** Info

**Probable Cause:** Interface speed change

**Recommended Action:** None

**Impact:** None

### Log-25021

**Message:** Interface %v FEC set to %v

**Severity:** Info

**Probable Cause:** Interface FEC change

**Recommended Action:** None

**Impact:** None

### Log-25022

**Message:** Breakout configuration failed on interface %v

**Severity:** Error

**Probable Cause:** Breakout configuration failed in HAL

**Recommended Action:** Undo failed configuration

**Impact:** Interfaces may not be available for configuration

### Log-25023

**Message:** Tunnel %v configured with same Source IP(%v) and destination IP (%v)

**Severity:** Error

**Probable Cause:** Configurations

**Recommended Action:** Fix the tunnel configuration

**Impact:** Tunnel may not come up

### Log-25024

**Message:** Interface %v Link Fault set to %v

**Severity:** Info

**Probable Cause:** Link Unreliable

**Recommended Action:** Fix host and peer interface configuration. Replace connected optics and cable

**Impact:** Link may not come operational Up or traffic loss

### Log-25025

**Message:** Duplicate Address %v on interface %v

**Severity:** Error

**Probable Cause:** Duplicate address in the network

**Recommended Action:** Fix the duplicate address in the network

**Impact:** IP Address configuration failed

### Log-25026

**Message:** Entered Maintenance mode (Reason: %s, Status: %s)

**Severity:** Info

**Probable Cause:** User configuration

**Recommended Action:** None

**Impact:** None

### Log-25027

**Message:** Exited Maintenance mode (Reason: %s, Status: %s)

**Severity:** Info

**Probable Cause:** User configuration

**Recommended Action:** None

**Impact:** None

### Log-25028

**Message:** Maintenance mode enabled

**Severity:** Info

**Probable Cause:** User configuration

**Recommended Action:** None

**Impact:** None

### Log-25029

**Message:** Maintenance mode disabled

**Severity:** Info

**Probable Cause:** User configuration

**Recommended Action:** None

**Impact:** None

### Log-25030

**Message:** Interface %v created

**Severity:** Info

**Probable Cause:** User configuration

**Recommended Action:** None

**Impact:** None

### Log-25031

**Message:** Interface %v deleted

**Severity:** Info

**Probable Cause:** User configuration

**Recommended Action:** None

**Impact:** None

### Log-25032

**Message:** Vrf %v created

**Severity:** Info

**Probable Cause:** User configuration

**Recommended Action:** None

**Impact:** None

### Log-25033

**Message:** Vrf %v deleted

**Severity:** Info

**Probable Cause:** User configuration

**Recommended Action:** None

**Impact:** None

### Log-25034

**Message:** Hardware programming failure (Resource: %v , Info %v)

**Severity:** Error

**Probable Cause:** Hardware resource limitation

**Recommended Action:** Report the issue to Extreme Networks support

**Impact:** Some interface manager functionality may not be available

### Log-25035

**Message:** Interface %v link-error-disable disabled

**Severity:** Info

**Probable Cause:** Interface link-error-disable disabled

**Recommended Action:** None

**Impact:** None

### Log-25036

**Message:** Interface %v Operationally disabled by port link dampening

**Severity:** Info

**Probable Cause:** Interface Operationally disabled by port link dampening

**Recommended Action:** None

**Impact:** The unstable/flapping interface will be operational down with the reason code PldDown

### Log-25037

**Message:** Interface %v Operationally enabled by port link dampening

**Severity:** Info

**Probable Cause:** Interface Operationally enabled by port link dampening

**Recommended Action:** None

**Impact:** None

### Log-25038

**Message:** Interface %v link-error-disable enabled

**Severity:** Info

**Probable Cause:** Interface link-error-disable enabled

**Recommended Action:** None

**Impact:** None

### Log-25039

**Message:** System fault detected due to I2C error

**Severity:** Info

**Probable Cause:** I2C communication error detected during hardware monitoring

**Recommended Action:** Monitor the system; if fault persists, report the issue to Extreme Networks support

**Impact:** System fault has been raised due to I2C error

### Log-25040

**Message:** Tunnel Nexthop disabled (only one supported per interface)

**Severity:** Info

**Probable Cause:** Only one tunnel nexthop is supported per interface; additional nexthop was disabled

**Recommended Action:** None

**Impact:** Only one tunnel nexthop will be active per interface

### Log-26000

**Message:** Failed to initialize microservice

**Severity:** Fatal

**Probable Cause:** Failed to launch MS

**Recommended Action:** Report the issue to Extreme Networks support

**Impact:** LACP MicroService will not be available

### Log-26001

**Message:** Failed to Create HW entry for %v : err %v

**Severity:** Error

**Probable Cause:** Failed to Create LAG entry in ASIC

**Recommended Action:** Report the issue to Extreme Networks support

**Impact:** LAG Operation may not work and traffic issue will hit

### Log-26002

**Message:** LACP P4 Initialization Failed, err=%v

**Severity:** Error

**Probable Cause:** Init failed

**Recommended Action:** Report the issue to Extreme Networks support

**Impact:** LAG Operation on P4 may not work

### Log-26003

**Message:** Failed to check P4 PipelineReady, err=%v

**Severity:** Error

**Probable Cause:** Pipeline ready

**Recommended Action:** Report the issue to Extreme Networks support

**Impact:** LAG Operation on P4 may not work

### Log-26004

**Message:** Pipeline is not ready. Retrying

**Severity:** Warning

**Probable Cause:** Pipeline ready

**Recommended Action:** Report the issue to Extreme Networks support

**Impact:** LAG Operation on P4 may not work

### Log-26005

**Message:** Failed to check P4 Connection Ready, err=%v

**Severity:** Error

**Probable Cause:** Pipeline ready

**Recommended Action:** Report the issue to Extreme Networks support

**Impact:** LAG Operation on P4 may not work

## Log-26006

**Message:** P4 Connection is not ready. Retrying

**Severity:** Warning

**Probable Cause:** P4 connection not ready

**Recommended Action:** Report the issue to Extreme Networks support

**Impact:** LAG Operation on P4 may not work

## Log-26007

**Message:** Unable to send LACP PDU via closed channel

**Severity:** Error

**Probable Cause:** Channel not ready

**Recommended Action:** Report the issue to Extreme Networks support

**Impact:** LAG Operation may not work

## Log-27001

**Message:** Service %v joined. current version %v, previous version %v, number of times restarted %v

**Severity:** Info

**Probable Cause:** Service joined

**Recommended Action:** NA

**Impact:** NA

## Log-27002

**Message:** Service %v terminated with exit code %v

**Severity:** Info

**Probable Cause:** Service is terminated with exit code

**Recommended Action:** NA

**Impact:** NA

### Log-27003

**Message:** Service %v ready. current version %v, previous version %v, number of times restarted %v

**Severity:** Info

**Probable Cause:** Service readiness

**Recommended Action:** NA

**Impact:** No impact

### Log-27004

**Message:** Could not create a new connection object.

**Severity:** Error

**Probable Cause:** Unable to create a connection

**Recommended Action:** NA

**Impact:** No impact

### Log-27005

**Message:** Could not subscribe to the bus

**Severity:** Error

**Probable Cause:** Unable to subscribe to the bus

**Recommended Action:** NA

**Impact:** No impact

### Log-27006

**Message:** Error getting unit property %v

**Severity:** Error

**Probable Cause:** Error in getting property

**Recommended Action:** NA

**Impact:** No impact

### Log-27007

**Message:** processRunning():Service %s added and running

**Severity:** Info

**Probable Cause:** Service added and running

**Recommended Action:** NA

**Impact:** No impact

### Log-27008

**Message:** processTerminated():Service %s terminated

**Severity:** Info

**Probable Cause:** Service terminated

**Recommended Action:** NA

**Impact:** No impact

### Log-27009

**Message:** processReady():Service %s ready

**Severity:** Info

**Probable Cause:** Service readiness

**Recommended Action:** NA

**Impact:** No impact

### Log-27010

**Message:** detected uncontrolled restart of services - %s reason %s

**Severity:** Error

**Probable Cause:** services ungraceful termination

**Recommended Action:** NA

**Impact:** System will be restarted

### Log-27011

**Message:** max restart limit reached, not restarting system

**Severity:** Error

**Probable Cause:** Service died

**Recommended Action:** Upgrade/Reload system

**Impact:** System may be unstable

### Log-27012

**Message:** received system fault event

**Severity:** Error

**Probable Cause:** SW/HW component is in faulty state

**Recommended Action:** Upgrade/Reload system

**Impact:** System may be unstable

### Log-27013

**Message:** clearing system fault event

**Severity:** Info

**Probable Cause:** SW/HW component is in back to normal state

**Recommended Action:** None

**Impact:** None

### Log-27014

**Message:** OOM flap detected: Limit reached, system fault will not be cleared

**Severity:** Error

**Probable Cause:** System fault event has flapped more than 5 times between <1G and ≥1.5G. Limit reached

**Recommended Action:** Reload/Powercycle to recover

**Impact:** None

### Log-27015

**Message:** Collecting tech support for system fault

**Severity:** Info

**Probable Cause:** System fault detected, tech support collection initiated

**Recommended Action:** Tech support will be collected automatically

**Impact:** System resources temporarily used for tech support collection

### Log-28001

**Message:** service shutting down

**Severity:** Info

**Probable Cause:** graceful shutdown

**Recommended Action:** NA

**Impact:** none

### Log-28002

**Message:** service is ready

**Severity:** Info

**Probable Cause:** service successfully started/restarted

**Recommended Action:** NA

**Impact:** none

### Log-28003

**Message:** BFD session is operationally UP

**Severity:** Info

**Probable Cause:** BFD Session Status

**Recommended Action:** NA

**Impact:** none

### Log-28004

**Message:** BFD session is operationally DOWN

**Severity:** Info

**Probable Cause:** BFD Session Status

**Recommended Action:** NA

**Impact:** none

### Log-28005

**Message:** BFD session is Administratively DOWN

**Severity:** Info

**Probable Cause:** BFD Session Status

**Recommended Action:** NA

**Impact:** none

### Log-29001

**Message:** ZTP DHCP process completed.

**Severity:** Info

**Probable Cause:** Indicates that device completed ZTP DHCP.

**Recommended Action:** No action is required.

**Impact:** None

### Log-29002

**Message:** ZTP DHCP process started.

**Severity:** Info

**Probable Cause:** Indicates that device started ZTP DHCP Process.

**Recommended Action:** No action is required.

**Impact:** None

### Log-29003

**Message:** Successfully downloaded ZTP configuration file from %v server

**Severity:** Info

**Probable Cause:** Indicates that device downloaded ztp configuration file from HTTPS server.

**Recommended Action:** No action is required.

**Impact:** None

### Log-29004

**Message:** Received dhcption 66 and 67.

**Severity:** Info

**Probable Cause:** Indicates that device received dhcp option 66 and 67 to start ZTP DHCP Process.

**Recommended Action:** No action is required.

**Impact:** None

## Log-29005

**Message:** Firmware download completed from HTTPS Server.

**Severity:** Info

**Probable Cause:** Indicates that device is downloading the firmware mentioned in ZTP configuration file from HTTPS Server

**Recommended Action:** No action is required.

**Impact:** None

## Log-29006

**Message:** Firmware download failed from HTTPS Server.

**Severity:** Error

**Probable Cause:** Indicates that device has failed to download the firmware mentioned in ZTP configuration file from HTTPS Server

**Recommended Action:** Check network connectivity with remote server.

**Impact:** ZTP process fails and will be retried

## Log-29007

**Message:** Switch startup configuration file download completed from HTTPS Server.

**Severity:** Info

**Probable Cause:** Indicates that device is downloading the switch startup config mentioned in ZTP configuration file from HTTPS Server

**Recommended Action:** No action is required.

**Impact:** None

## Log-29008

**Message:** Switch startup configuration file download failed from HTTPS Server.

**Severity:** Error

**Probable Cause:** Indicates that device has failed to download the switch startup config mentioned in ZTP configuration file from HTTPS Server

**Recommended Action:** Check network connectivity with remote server.

**Impact:** ZTP process fails and will be retried

## Log-29009

**Message:** Python file download completed from HTTPS Server.

**Severity:** Info

**Probable Cause:** Indicates that device downloaded the python file mentioned in ZTP configuration file from HTTPS Server

**Recommended Action:** No action is required.

**Impact:** None

## Log-29010

**Message:** Python file download failed from HTTPS Server.

**Severity:** Error

**Probable Cause:** Indicates that device has failed to download the python file mentioned in ZTP configuration file from HTTPS Server

**Recommended Action:** Check network connectivity with remote server.

**Impact:** ZTP process fails and will be retried

## Log-29011

**Message:** Firmware updated. Going for Reboot

**Severity:** Info

**Probable Cause:** Indicates that device upgrading/downgrading to firmware in ztp configuration file

**Recommended Action:** No action is required.

**Impact:** None

## Log-29012

**Message:** Same firmware is running on device

**Severity:** Warning

**Probable Cause:** Indicates that device is already running with same firmware in ztp configuration file

**Recommended Action:** No action is required.

**Impact:** None

## Log-29013

**Message:** Failed to upgrade/downgrade firmware

**Severity:** Error

**Probable Cause:** Indicates that device failed to upgrade/downgrade to firmware in ztp configuration file

**Recommended Action:** Check network connectivity with remote server.

**Impact:** ZTP process fails and will be retried

## Log-29014

**Message:** Received ztp dhcp cancel request from user

**Severity:** Info

**Probable Cause:** Indicates that device needs to cancel DHCP process

**Recommended Action:** No action is required.

**Impact:** None

## Log-29015

**Message:** Failed to handle ztp cancel request in current ztp state

**Severity:** Error

**Probable Cause:** Indicates that device cannot cancel ztp process as it's in middle of firmware upgrade/filereplay/python execution

**Recommended Action:** perform factory-reset followed by ztp cancel

**Impact:** None

## Log-29016

**Message:** Device received request to restart ztp process from canceled state

**Severity:** Info

**Probable Cause:** Indicates that device is restarting ztp process from canceled state

**Recommended Action:** No action is required.

**Impact:** None

## Log-29017

**Message:** Activating new firmware

**Severity:** Info

**Probable Cause:** Indicates that device is activating new firmware received from HTTPS server

**Recommended Action:** No action is required.

**Impact:** None

## Log-29018

**Message:** Skip firmware upgrade

**Severity:** Info

**Probable Cause:** fwdir from ztp.cfg is empty

**Recommended Action:** No action is required.

**Impact:** No firmware upgrade

## Log-29019

**Message:** Invalid ZTP configuration file

**Severity:** Error

**Probable Cause:** ztp configurations are not proper in remote

**Recommended Action:** Update the parameters in remote server.

**Impact:** ZTP process fails and will be retried

## Log-29020

**Message:** Failed to read dhcp client-id

**Severity:** Error

**Probable Cause:** Unable to read its dhcp client identifier to start ztp process

**Recommended Action:** No action is required.

**Impact:** ZTP process not started

### Log-29021

**Message:** Waiting for dhcption 66 and 67.

**Severity:** Warning

**Probable Cause:** Indicates that device is waiting dhcp option 66 and 67 to start ZTP DHCP Process.

**Recommended Action:** No action is required.

**Impact:** None

### Log-29022

**Message:** ZTP mode is enabled on device and config terminal is blocked. Use 'ztp dhcp cancel' or wait for ZTP process to complete.

**Severity:** Warning

**Probable Cause:** ZTP is not completed.

**Recommended Action:** No action is required.

**Impact:** None

### Log-29023

**Message:** Received dhcption 43.

**Severity:** Info

**Probable Cause:** Indicates that device received dhcp option 43 with CA certificate for HTTPS server.

**Recommended Action:** No action is required.

**Impact:** None

### Log-29024

**Message:** Failed to download dhcption 43.

**Severity:** Error

**Probable Cause:** Indicates that device failed to downlaod CA.

**Recommended Action:** No action is required.

**Impact:** None

### Log-29025

**Message:** ZTP configuration file received is empty

**Severity:** Warning

**Probable Cause:** Indicates that device failed to complete ZTP over DHCP.

**Recommended Action:** Update ztp config file contents.

**Impact:** None

### Log-29026

**Message:** ZTP configuration sanity check pass.

**Severity:** Info

**Probable Cause:** Indicates that the downloaded ZTP configuration is valid.

**Recommended Action:** No action is required.

**Impact:** None

### Log-29027

**Message:** ZTP configuration sanity check fail.

**Severity:** Error

**Probable Cause:** Indicates that the downloaded ZTP configuration is invalid.

**Recommended Action:** Address the ZTP configuration file at the server.

**Impact:** ZTP DHCP will not complete

### Log-29028

**Message:** ZTP configuration file not found at HTTPS server.

**Severity:** Error

**Probable Cause:** Indicates option 67 does not exist on HTTPS server.

**Recommended Action:** Correct ZTP configuration files should be provided.

**Impact:** ZTP DHCP will not complete

### Log-29029

**Message:** Python file execution completed.

**Severity:** Info

**Probable Cause:** Indicates that device downloaded the python file mentioned in ZTP configuration file from HTTPS Server and completed execution

**Recommended Action:** No action is required.

**Impact:** None

## Log-29030

**Message:** Switch startup configuration file replay completed.

**Severity:** Info

**Probable Cause:** Indicates that device downloaded the switch startup configuration file mentioned in ZTP configuration file from HTTPS Server and completed execution

**Recommended Action:** No action is required.

**Impact:** None

## Log-29031

**Message:** Python file execution failed.

**Severity:** Error

**Probable Cause:** Indicates that device downloaded the python file mentioned in ZTP configuration file from HTTPS Server and failed to execute

**Recommended Action:** No action is required.

**Impact:** None

## Log-29032

**Message:** Switch startup configuration file replay failed.

**Severity:** Error

**Probable Cause:** Indicates that device downloaded the switch startup configuration file mentioned in ZTP configuration file from HTTPS Server and failed to execute

**Recommended Action:** No action is required.

**Impact:** None

## Log-29033

**Message:** Successfully downloaded dhcption 43

**Severity:** Info

**Probable Cause:** Indicates that device received dhcp option 43 with CA certificate for HTTPS server

**Recommended Action:** No action is required.

**Impact:** None

## Log-31001

**Message:** Requisite flags for sr-api-gw service not set; cannot proceed, exiting.

**Severity:** Fatal

**Probable Cause:** Requisite flags for sr-api-gw service is not set.

**Recommended Action:** Report the issue to Extreme Networks support

**Impact:** sr-api-gw service launch will fail.

## Log-31002

**Message:** sr-api-gw service listening on %s

**Severity:** Info

**Probable Cause:** sr-api-gw service connection status.

**Recommended Action:** No action required

**Impact:** sr-api-gw service is ready to accept gRPC API requests.

## Log-31003

**Message:** sr-api-gw service terminated:%v

**Severity:** Error

**Probable Cause:** sr-api-gw service termination.

**Recommended Action:** No action required

**Impact:** External communication to clients will be disrupted.

## Log-33001

**Message:** Error during service Initialize

**Severity:** Error

**Probable Cause:** Not enough system resource

**Recommended Action:** Please Contact Customer Support

**Impact:** service will be unavailable

### Log-33002

**Message:** Error occurred during management service notification handling

**Severity:** Error

**Probable Cause:** Failure in communication with management service

**Recommended Action:** Please Contact Customer Support

**Impact:** Config or State notification may not be accepted

### Log-33003

**Message:** Error during internal DB operation

**Severity:** Error

**Probable Cause:** Internal Error

**Recommended Action:** Please Contact Customer Support

**Impact:** service might misbehave in related scenarios

### Log-33004

**Message:** Error during Publish State Info

**Severity:** Error

**Probable Cause:** Not enough system resource

**Recommended Action:** Please Contact Customer Support

**Impact:** Management State Info may be out of Sync

### Log-33005

**Message:** service shutting down

**Severity:** Info

**Probable Cause:** graceful shutdown

**Recommended Action:** NA

**Impact:** none

### Log-33006

**Message:** Error during service Initialize

**Severity:** Error

**Probable Cause:** service is starting up

**Recommended Action:** restart the service

**Impact:** service will be unavailable until restart

### Log-33007

**Message:** service is ready

**Severity:** Info

**Probable Cause:** service successfully started/restarted

**Recommended Action:** NA

**Impact:** none

### Log-33008

**Message:** Error during communication with Clients

**Severity:** Error

**Probable Cause:** Failure in GRPC communication or Compatibility Issues

**Recommended Action:** Please Contact Customer Support

**Impact:** client communications will be impacted

### Log-34001

**Message:** Error during service Initialize

**Severity:** Error

**Probable Cause:** Not enough system resource

**Recommended Action:** Please Contact Customer Support

**Impact:** Service will be unavailable

### Log-34002

**Message:** Error occurred during management service notification handling

**Severity:** Error

**Probable Cause:** Failure in communication with management service

**Recommended Action:** Please Contact Customer Support

**Impact:** Config or State notification may not be accepted

### Log-34003

**Message:** Error during internal DB operation

**Severity:** Error

**Probable Cause:** Internal Error

**Recommended Action:** Please Contact Customer Support

**Impact:** Service might misbehave in related scenarios

### Log-34004

**Message:** Error during Publish State Info

**Severity:** Error

**Probable Cause:** Not enough system resource

**Recommended Action:** Please Contact Customer Support

**Impact:** Management State Info may be out of Sync

### Log-34005

**Message:** Service shutting down

**Severity:** Info

**Probable Cause:** Graceful shutdown

**Recommended Action:** NA

**Impact:** none

### Log-34006

**Message:** Error during service Initialize

**Severity:** Error

**Probable Cause:** Service is starting up

**Recommended Action:** Restart the service

**Impact:** Service will be unavailable until restart

### Log-34007

**Message:** Service is ready

**Severity:** Info

**Probable Cause:** Service successfully started/restarted

**Recommended Action:** NA

**Impact:** none

### Log-34008

**Message:** Error during communication with Clients

**Severity:** Error

**Probable Cause:** Failure in GRPC communication or Compatibility Issues

**Recommended Action:** Please Contact Customer Support

**Impact:** Client communications will be impacted

### Log-34009

**Message:** Error during prefix addition to forwarding table

**Severity:** Error

**Probable Cause:** Duplicate prefix detected

**Recommended Action:** Please fix configuration

**Impact:** Duplicate configuration could result in undefined forwarding behavior

### Log-35004

**Message:** Successfully applied configuration with config id %s

**Severity:**

**Probable Cause:** Config deploy was successful

**Recommended Action:** NA

**Impact:** none

### Log-35005

**Message:** Failed to apply configuration with config id %s

**Severity:** Error

**Probable Cause:** Config deploy failed

**Recommended Action:** NA

**Impact:** none