



Extreme Platform ONE Networking v25.5.2-10 Release Notes

New Features, Limitations, and Known Issues

9039469-01 Rev AA
November 2025



Copyright © 2025 Extreme Networks, Inc. All rights reserved.

Legal Notice

Extreme Networks, Inc. reserves the right to make changes in specifications and other information contained in this document and its website without prior notice. The reader should in all cases consult representatives of Extreme Networks to determine whether any such changes have been made.

The hardware, firmware, software or any specifications described or referred to in this document are subject to change without notice.

Trademarks

Extreme Networks and the Extreme Networks logo are trademarks or registered trademarks of Extreme Networks, Inc. in the United States and/or other countries.

All other names (including any product names) mentioned in this document are the property of their respective owners and may be trademarks or registered trademarks of their respective companies/owners.

For additional information on Extreme Networks trademarks, see: <https://www.extremenetworks.com/about-extreme-networks/company/legal/trademarks>

Open Source Declarations

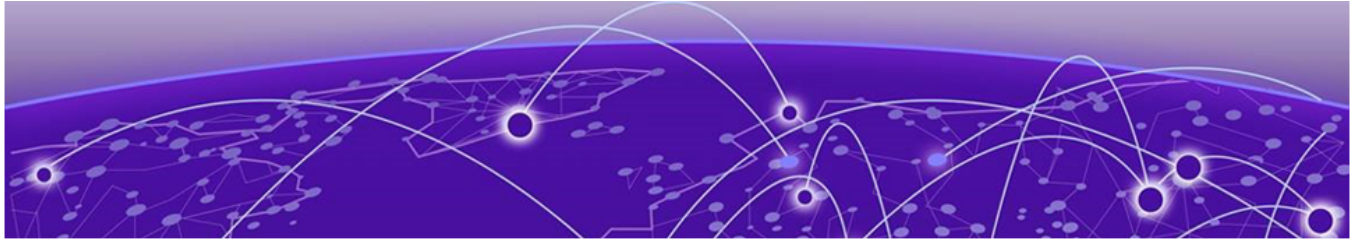
Some software files have been licensed under certain open source or third-party licenses.

End-user license agreements and open source declarations can be found at: <https://www.extremenetworks.com/support/policies/open-source-declaration/>



Table of Contents

Abstract.....	4
Help and Support.....	v
Release Notes.....	6
General Release Information.....	6
Current Release: 25.5.2-10.....	6
Release: 25.5.2-10 New Features.....	6
Release: 25.5.2-10 Addressed Issues.....	6
Introduction to Extreme Platform ONE Networking.....	7
Previous Release.....	7
Extreme Platform ONE Public IP Address Blocks.....	7
Supported Applications.....	8
Browser Support and Display Settings.....	9
Desktop Browsers.....	9
Display Settings.....	9
Supported Devices and OS Versions.....	9
New Features.....	11
Addressed Issues.....	16
Known Issues.....	19
Limitations.....	22



Abstract

This release notes document for Extreme Platform ONE Networking version 25.5.2-10 provides a comprehensive overview of new features, supported platforms, addressed issues, known limitations, and technical configurations relevant to IT administrators and network engineers. The platform consolidates multi-domain network management into a unified interface with contextual AI support, real-time alerts, and single sign-on (SSO) capabilities. This release introduces support for EXOS/Switch Engine 33.4.1.15, 32.7.3.15-patch1-19, Fabric Engine/VOSS 9.3, and IQ Engine 10.8r4, enabling enhanced onboarding, monitoring, and configuration for a wide range of switches and Wi-Fi 7 access points. Key features include WBA OpenRoaming for AP4020X, Fabric Attach Redundancy, automatic stack member onboarding with license allocation, UL OFDMA, WPA3 Personal Transition Mode, and drag-and-drop image support. The document details over 40 resolved issues across account management, onboarding, licensing, UI, and device management, while highlighting known issues such as API rate limitations, browser-specific UI bugs, and visualization inconsistencies. It also outlines critical configuration requirements, such as minimum firmware versions and supported browser environments. This technical document is intended for advanced users managing enterprise-scale network environments.



Help and Support

If you require assistance, contact Extreme Networks using one of the following methods:

Extreme Portal

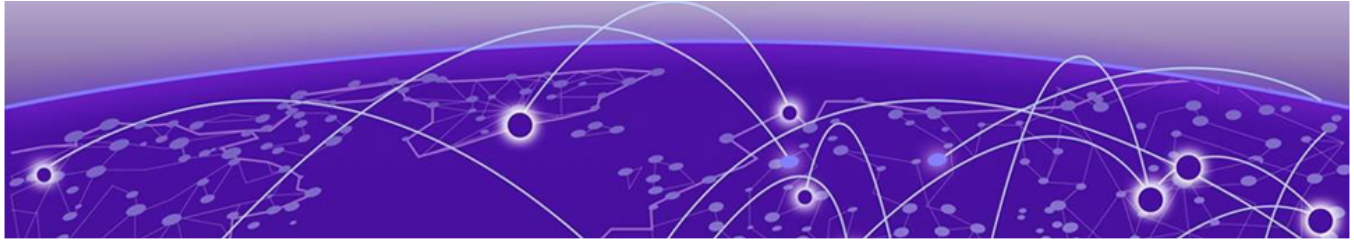
Search the GTAC (Global Technical Assistance Center) knowledge base; manage support cases and service contracts; download software; and obtain product licensing, training, and certifications.

The Hub

A forum for Extreme Networks customers to connect with one another, answer questions, and share ideas and feedback. This community is monitored by Extreme Networks employees, but is not intended to replace specific guidance from GTAC.

Call GTAC

For immediate support: (800) 998 2408 (toll-free in U.S. and Canada) or 1 (408) 579 2800. For the support phone number in your country, visit www.extremenetworks.com/support/contact.



Release Notes

- [General Release Information](#) on page 6
- [Previous Release](#) on page 7
- [Supported Applications](#) on page 8
- [Browser Support and Display Settings](#) on page 9
- [Supported Devices and OS Versions](#) on page 9
- [New Features](#) on page 11
- [Addressed Issues](#) on page 16
- [Known Issues](#) on page 19

General Release Information

Extreme Platform ONE Networking is a central management platform that simplifies the user experience and provides automation at scale.

Current Release: 25.5.2-10

November 2025

Release: 25.5.2-10 New Features

There are no new features for this release.

Release: 25.5.2-10 Addressed Issues

Issue ID	Description
CFD-15499, CFD-15501	Addressed licensing issues that can cause unintended license reallocation and block the device unmanage action for HIQ accounts.

Introduction to Extreme Platform ONE Networking

The following are a few key features:

- **Comprehensive UI:** Provides access to alerts, licensing details, inventory, and firmware updates.
- **Alerts and Notifications:** Find and fix problems quickly. Real-time notifications ensure you are always aware of system updates or security notices.
- **Contextual AI Support:** Meet your AI Expert-your contextual helper. Powered by the latest in AI technology, AI Expert provides instant support and guidance, ensuring you have the answers you need, when you need them.
- **Single Sign-On (SSO):** Access Extreme Platform ONE Networking applications with a single sign-on, removes the need for multiple credentials.

Previous Release

This section lists the new features, addressed issues, and known issues for the previous release.

Extreme Platform ONE Public IP Address Blocks

Data Center	IP Block	Addresses and Ports
Global Data Center (GDC)	44.234.22.92/30 18.194.95.0/28 34.253.190.192/26 3.234.248.0/27	
Australia (AUS)	13.210.3.192/28 18.98.198.80/28	Firewall Address and Port Information
Azure, Canada Central (ACA)	20.151.64.48/28	Firewall Address and Port Information
Azure, US East (AVA)	52.226.89.112/28	Firewall Address and Port Information
Brazil (BR)	18.228.70.16/28	Firewall Address and Port Information
Germany (FRA)	3.67.81.96/27 18.194.95.0/28	Firewall Address and Port Information
India (IN)	13.232.67.8/29 3.6.70.64/29	Firewall Address and Port Information
Ireland (IE)	34.253.190.192/26	Firewall Address and Port Information
Japan (JP)	18.176.203.112/29 13.231.6.232/29 57.181.58.0/28	Firewall Address and Port Information
Netherlands (NL-GCP)	34.91.82.64/27	Firewall Address and Port Information
Singapore (SG-GCP)	34.87.158.80/28	Firewall Address and Port Information

Data Center	IP Block	Addresses and Ports
Spain (ES)	18.101.49.128/27	Firewall Address and Port Information
Sweden (SE)	13.48.186.224/29 13.48.4.184/29 13.48.4.240/28	Firewall Address and Port Information
Switzerland (ACH)	51.107.1.192/28	Firewall Address and Port Information
United Arab Emirates (UAE)	3.28.159.128/28	Firewall Address and Port Information
United Kingdom (UK-AGB)	51.143.233.80/28	Firewall Address and Port Information
US East (VA)	34.202.197.0/26 44.192.245.0/26 3.234.248.0/27	Firewall Address and Port Information
US East 2 (VA2)	34.202.197.0/26 44.192.245.0/26 3.234.248.0/27	Firewall Address and Port Information
US-Iowa (IA-GCP)	34.67.130.64/27	Firewall Address and Port Information
US Ohio (OH)	3.145.235.64/26	Firewall Address and Port Information

Supported Applications

Extreme Platform ONE Networking eliminates the need to log in separately to the Extreme Networks multi-domain network management solutions by unifying them within a single user interface.

For example, if you subscribe to ExtremeCloud IQ, and have a site, you can view all connected sites and onboarded devices from ExtremeCloud IQ.



Note

The applications available when you log in are specific to the subscription licenses purchased by your organization. Access to applications might also be defined by the role assigned if your organization implements Single Sign-On.

Extreme Platform ONE Networking supports the following applications:

- ExtremeCloud IQ: Provides centralized configuration and network monitoring, reporting, alarms, and statistics for Extreme Networks devices.
- ExtremeCloud SD-WAN: Provides unified wired and wireless management through fabric services. You can enable a secure network, automate application performance management, and create a centralized management of applications with intuitive user experiences.
- Extreme Platform ONE Security: Provides network, application, and device access security within a single solution.
- Extreme Intuitive Insights: Provides cloud-based deployment and monitoring of Zebra hand-held devices.

Browser Support and Display Settings

**Note**

Extreme Platform ONE does not support 32-bit browsers.

Desktop Browsers

Extreme Platform ONE supports the latest 64-bit versions of the following desktop browsers:

- Chrome
- Edge
- Firefox
- Opera
- Safari

Microsoft Internet Explorer is not supported.

Display Settings

Extreme Platform ONE supports display resolutions of 1280 x 1024 or higher.

Supported Devices and OS Versions

Visualize does not show devices on topology maps if they do not meet the minimum firmware version requirement:

- VOSS or Fabric Engine devices must be 9.2.1.0 or later.
- EXOS or Switch Engine must be 33.3 or later.

Firmware compatibility is critical for feature functionality. New features may require specific firmware versions to operate as intended. The following table lists the minimum firmware versions required for the new features introduced in this release:

Device Family	Version	Devices
Switch Engine (single/ stacked)	33.3	<ul style="list-style-type: none"> • 4120 • 4220 • 5120 • 5320 • 5420 • 5520 • 5720 • 7520 • 7720
EXOS	33.3	<ul style="list-style-type: none"> • X435-8P-2T-W • X435-24T-4S • X435-24P-4S • X435-8T-4S • X435-8P-4S • X440-G2-12p-10GE4 • X440-G2-12t-10GE4 • X440-G2-24p-10GE4 • X440-G2-24t-10GE4 • X440-G2-48p-10GE4 • X440-G2-48t-10GE4 • X450-G2-24p-GE4 • X450-G2-24p-10GE4 • X450-G2-48p-10GE4 • X460-G2-16mp-32p-10GE4 • X460-G2-24p-10GE4 • X460-G2-24p-GE4 • X460-G2-24p-24hp-10GE4 • X460-G2-24t-10GE4 • X460-G2-24t-GE4 • X460-G2-24t-24ht-10GE4 • X460-G2-24x-10GE4 • X460-G2-48p-10GE4 • X460-G2-48t-10GE4 • X460-G2-48t-GE4 • X460-G2-48x-10GE4 • X465-24W • X465-48W • X465-24MU • X465-48P • X465-24MU-24W

Device Family	Version	Devices
Fabric Engine	9.2.1.0	<ul style="list-style-type: none"> • 4120 • 4220 • 5120 • 5320 • 5420 • 5520 • 5720 • 7520 • 7720
VOSS	9.2.1.0	<ul style="list-style-type: none"> • VSP7432CQ • VSP7400-48Y • VSP4900-48P • VSP4900-24XE • VSP4900-24S • VSP4900-12MXU-12XE
IQ Engine Access Point	10.8.3	<ul style="list-style-type: none"> • AP302W • AP305C • AP305CX • AP3000 • AP3000X • AP4000 • AP4020 • AP410C • AP460C • AP460S6C • AP460S12C • AP5010 • AP5020 • AP5050U • AP5050D • AP510C/CX • AP630 • AP650 • AP650X
ExtremeCloud Edge (UCP)	v5.10.12	<ul style="list-style-type: none"> • 1130C • 2130C • 3150C • 3160C • 4120C

New Features

[Table 1](#) lists the new features introduced in the Extreme Platform ONE Networking 25.5.1-62 release.

For more information about Extreme Platform ONE Networking features, see the 25.5.0 User Guide.

Table 1: New Features in release 25.5.1-62

Feature	Description
Switch Engine 33.4.1.15 patch Download Image Support (XIQ-44457)	Added support for EXOS/Switch Engine 33.4.1.15 patch download image functionality for all supported EXOS/Switch Engine SKUs.
EXOS/Switch Engine 33.4.1.15 patch Onboard, Monitor and Config Support (XIQ-44454)	Added support for EXOS/Switch Engine 33.4.1.15 patch onboard, monitor, and configuration capabilities for all supported SKUs.
Switch Engine 33.4.1.15 patch Download Image Support (XIQ-44419)	Added support for EXOS/Switch Engine 32.7.3.15-patch1-18 GA download image functionality for all supported SKUs.
EXOS/Switch Engine 32.7.3.15-patch1-19 patch Onboard, Monitor, Config (Download) Support (XIQ-44418)	Added support for EXOS/Switch Engine 32.7.3.15-patch1-19 patch onboard, monitor, and configuration capabilities.
AFC support for Canada (XIQ-43805)	Added AFC support for Canada for AP5050 devices.
WBA OpenRoaming Support for AP4020X In ExtremeCloud IQ (XIQ-43785)	Added WBA OpenRoaming support for AP4020X devices with UPA (Use Policy Acceptance) capability.
Fabric Attach Redundancy Support (XIQ-43670)	Added Fabric Attach Redundancy support with red0 binding for redundant pair configuration.
Automatically Add New Stack Member to the Stack (XIQ-43476)	Added automatic stack member onboarding functionality that automatically allocates Extreme Platform ONE Networking licenses when new members join existing stacks.
Indoor/Outdoor Configuration Option for AP4060 and AP4060X (XIQ-42997)	Added Indoor/Outdoor configuration options for AP4060 and AP4060X with vertical/horizontal orientation support.

Table 1: New Features in release 25.5.1-62 (continued)

Feature	Description
Add Spanning Tree Configuration for AP302W (XIQ-42454)	Added Spanning Tree configuration support for AP302W matching AP150W functionality.
Change Primary Default IQ Engine Public DNS (XIQ-40692)	Updated default primary DNS from OpenDNS to Cloudflare (1.0.0.1) while keeping OpenDNS as secondary.
Onboard, Monitor, and Configuration Support with Image Drag & Drop (XIQ-40598)	Added support for Fabric Engine/VOSS 9.3 onboard, monitor, configuration, and drag/drop image functionality. Supported switch models include 7720, 7520, 5720, 5520, 5420, 5320, applicable 4220 Universal switches, VSP4900, and VSP7400.
Onboard, Monitor, and Configuration Support with Image Drag & Drop (XIQ-45849)	Added support for Fabric Engine/VOSS 9.1.3 onboard, monitor, configuration, and drag/drop image functionality. Supported switch models include 7720, 7520, 5720, 5520, 5420, 5320, applicable 4220 Universal switches, VSP4900, and VSP7400.
Support SP Indoor AFC Platforms for AFC Mobile App (XIQ-39768)	Added AFC Mobile App support for setting indoor AP GPS coordinates where GPS lock is unavailable.
Automatically Add New Stack Member to the Stack (XIQ-39640)	Added automatic stack member onboarding with license allocation for consistent stack management.
Solum Dongle Support for WiFi 7 APs (XIQ-36151)	Solum dongle support for WiFi 7 APs (AP4020, AP5020, AP4020X, AP4020FX).
Hanshow Dongle Support for WiFi 7 APs (XIQ-36150)	Added Hanshow dongle support for WiFi 7 APs (AP4020, AP5020, AP4020X, AP4020FX).
Support for IQ Engine 10.8r4 (XIQ-35545)	Added support for IQ Engine 10.8r4.
Support for UL OFDMA for AP4020 and AP5020 (XIQ-35212)	Added UL OFDMA support for AP5020 and AP4020 devices.
Broadcast/Multicast Control for Tunnel Concentrator (XIQ-27616)	Added Broadcast/Multicast control configuration for Tunnel Concentrator services.

Table 1: New Features in release 25.5.1-62 (continued)

Feature	Description
IQ Engine Support for WPA3 Personal Transition Mode (XIQ-27405)	Added WPA3 Personal Transition Mode support for IQ Engine with PMF optional for 2.4/5GHz and mandatory for 6GHz.
WiFi Interface Statistics Display Issues Resolved (XIQ-16899)	Fixed WiFi interface statistics display for AP3000/AP5020/AP4020/X devices with different operating modes.
Instant port Device Types Scale Increase (NVO-4791)	Instant port Device Types scale has been increased to up to 260 device types with pagination.
Partially Connected/Onboarded devices support (NVO-5637)	Support has been added for partially connected/onboarded devices.
Toast Message Efficiency Improvements (NVO-8661)	Efficiency improvements to Toast messages have been made to reduce frequency during network instability.
Quick Navigation Menu Enhancement (NVO-9715)	The Quick Navigation Menu has been updated to display "Unlock Full Features" at Site and Group Site levels.
Visualization Enhancements (NVO-6313), (NVO-6645), (NVO-6958)	<ul style="list-style-type: none"> • Minimap replacement with View Selector for better flexibility. • Pagination, view centering, and legend updates • Switch Device Details View (Device 360) enhancements
Added Support (NVO-7061)	Added support for the 5320-16P-2MXT-2X switch, 5420-24W-24S-4YE switch, and the 7830 Series switches.
Support for 5320-16P-2MXT-2X Switch (NVO-6438)	Added support for Switch Engine onboard, monitor, and configuration for the 5320-16P-2MXT-2X switch.

Table 1: New Features in release 25.5.1-62 (continued)

Feature	Description
Support for 5420M-24W-24S-4Y E Switch (NVO-6436, NVO-6437)	Added support for Fabric Engine and Switch Engine onboard, monitor, and configuration for the 5420M-24W-24S-4YE switch.
Support for 7830 Series Switch (NVO-6435, NVO-6440)	Added support for Fabric Engine onboard, monitor, and configuration for the 7830 Series switch.

Table 2: New Features in Extreme AI Expert

Feature	Description
Restricted AI Responses from Priority 3 Product List DT4N-5366	Restricted AI responses from Priority 3 product list unless explicitly requested, to reduce irrelevant or legacy content.
Updated Violation Message DT4N-4966	Updated violation message to guide users toward starting a new conversation, improving clarity and user experience when inputs breach usage guidelines.
Updated User Interface Labels DT4N-4962	Updated user interface labels to reflect current naming conventions: "AI Insights" renamed to "AI Canvas" on the Workspace page, and chat disclaimer updated to reference "Extreme AI" instead of "Extreme AI Expert."
Refactored Dashboard Grid Layout DT4N-4393	Refactored dashboard grid layout to preserve widget order across responsive breakpoints, enhancing layout consistency and user experience across devices.
Added Collapsible User Interface DT4N-3930	Added collapsible user interface for suggested follow-up questions in Extreme AI Chat, reducing visual clutter and improving readability—especially on smaller screens—by hiding suggestions by default with an option to expand.
Refined Layout in the Reasoning Panel DT4N-5382	Refined layout in the Reasoning panel by removing unnecessary blank line after the "Data Source" field, resulting in a cleaner and more compact visual structure.
Improved User Interface Responsiveness DT4N-5381	Improved user interface responsiveness by enabling dynamic font scaling for the Reasoning section, ensuring consistent text behavior across zoom levels and screen sizes.

Table 2: New Features in Extreme AI Expert (continued)

Feature	Description
Improved Layout Responsiveness DT4N-5383	Improved layout responsiveness of undocked mode by enabling charts and widgets to scale proportionally with the expanded window, ensuring consistent use of screen space across UI elements.
Service Agent Enhancements DT4N-3637, DT4N-6099	The Service Agent can recommend resolutions, gather evidence to support issue resolution, create a case with Extreme GTAC using the collected evidence (only for ExtremeWorks and ExtremeWorks Premier customers), and retrieve case status on behalf of the customer administrator.

Addressed Issues

Table 3 lists Addressed Issues in Extreme Platform ONE Networking release 25.5.1-62.

Table 3: Addressed Issues in release 25.5.1-62

Issue ID	Description
Account Management	
WS-3201	Fixed an issue where the account switcher popup did not load for users with linked external accounts.
WS-3218	Fixed an issue where language changes were not applied to micro-frontend pages when using the account switcher.
WS-3226	Fixed an issue where the account switcher menu appeared unexpectedly during browser refresh.
WS-3268	Fixed an issue where switching to a pilot license external VIQ from the Contract page left the application in a loading state.
WS-3281	Fixed an issue where switching accounts from the edit user screen caused errors and blank pages.
API	
XCP-9249	Added API support while mapping externally auth IdP/AD groups to a custom role.
Browser Issues	
NVO-10386	Fixed an issue where a selected link does not stay highlighted in Fabric View while using Microsoft Edge.
WS-2809	Fixed an issue where switching back to English from other languages required a browser refresh to take effect.
Device Management	
XIQ-26907	Fixed an issue where port forwarding configuration required a complete config push instead of working with delta configuration.

Table 3: Addressed Issues in release 25.5.1-62 (continued)

Issue ID	Description
XIQ-41057	Fixed an issue where AP5020 WiFi interface always reported noise value as 0 regardless of actual RF conditions.
XIQ-43891	Fixed an issue where the export function for stack switch devices only included details of the primary switch instead of all stack members.
XIQ-44031	Fixed an issue where client issue counts were inconsistent between the Client List page and C360 Troubleshooting Client Issues page.
XCP-5043	Addressed the issue where UCP appliance table alignment was incorrect under the Appliance tab for high-resolution displays (3840x2160). The table now displays with proper alignment across different screen resolutions.
XCP-10812	Device managed by Site Engine cannot be changed from Managed to Unmanaged and Unmanaged to Managed in Extreme Platform ONE Networking. Use ExtremeCloud IQ (New) to perform such actions.
XCP-12595	Fixed an issue where deleted devices were temporarily visible in UI pagination, causing usability problems. The system now properly refreshes the grid after deletion and disables in-progress devices to prevent user actions during deletion processing.
Inventory	
XCP-12715	Addressed the issue with <code>os_version</code> pattern mismatch between Inventory and PSIRTS tables. The system now normalizes version formats to ensure proper matching between different version pattern representations.
XCP-10805	When the number of devices is large, filters applied in the Inventory page do not persist after a page refresh.
Licensing	
XCP-1253	Addressed deprecation of CoPilot Grace Period functionality.
XCP-10232	Fixed an issue where devices were allocated Extreme Platform ONE Networking licenses even when insufficient licenses were available, making the environment unusable.
XCP-10593	Updated Extreme Platform ONE Networking license descriptions from "SaaS Subscription" to "Networking Right-to-use".
XCP-10689	Added graceful migration path from Extreme Platform ONE Networking license back to Pilot license.
XCP-11497	Addressed tier mapping change for Tunnel Concentrator from Tier B to Tier A.
XCP-11515	Addressed subscription mapping corrections for Summit X620, X670, and X770 series switches to appropriate Extreme Platform ONE Networking tiers.
MSP	

Table 3: Addressed Issues in release 25.5.1-62 (continued)

Issue ID	Description
XCP-10605	MSP Super Admin and MSP Admin users are unable to access the Clone Building and Clone Floor functionalities.
Onboarding	
NVO-9543	Fixed an issue where FA AutoSense configuration during xlsx onboarding created VLAN attributes without performing the unlock step.
XIQ-43686	Fixed an issue where 6GHz channel and admin state were not updating properly during bulk onboarding for WiFi2 interface.
XCP-6924	The general device onboarding failed toast messages must include reason for failure.
XCP-10371	Wired and Wireless onboarding processes onboard more than 10 devices, exceeding the intended limit.
XCP-10407	The DLCS service returns inconsistent schema structures for HTTP 400 errors across different onboarding interfaces.
Roles	
NVO-9442	Fixed an issue where Observer role users received "Access Denied" error when performing Save Settings action.
XIQ-43835	Fixed an issue where NetSecOps role users received a 403 error when performing Reset VIQ operations.
XCP-10667	Fixed an issue where BizOps users under EP1 could not access the "Unlock Full Features" functionality on the Inventory page.
WS-3030	Fixed an issue where incorrect banner appeared when accessing the application with role-based accounts.
WS-3238	Fixed an issue where users could access restricted screens when switching to external VIQs without proper permissions.
WS-3242	Fixed an issue where External Observer users could access restricted Administration pages during browser refresh.
SSO	
NVO-7270	Extreme Cloud IQ (NEW) and Extreme Platform ONE Networking now support updating Extreme Security ONE certificates that expire with a pending delta configuration update for Switch Engine devices enabled with Instant Secure Port or Fabric Engine devices configured with Extreme Security One RADIUS servers.
User Interface	
XIQ-44776	Added support for VOSS 8.10.8 GA onboard, monitor, configuration, and download image functionality for XA1400 switches.
XIQ-44777	Added support for Fabric Engine/VOSS 8.10.8 onboard, monitor, configuration, and drag-drop image functionality for XA1400 switches.

Table 3: Addressed Issues in release 25.5.1-62 (continued)

Issue ID	Description
XCP-9905	When accessing the ExtremeCloud IQ URL (https://ws2.qa.xcloudiq.com/) or the SD-WAN URL (https://extremecloudiq.com/discovery-apps), users are redirected to the existing login pages instead of the Extreme Platform ONE Networking login page.
XCP-11234	The number of client issues displayed on the Client List page does not match the count on the C360 > Troubleshooting > Client Issues .
XCP-12718	Fixed an issue where wildcard operating system version patterns like .xx were not matching actual version entries. The system now correctly handles wildcard patterns such as 33.2.1.xx to match versions like 33.2.1.0, 33.2.1.2, and 33.2.1.16.
WS-2708	Fixed an issue where selected languages were not properly applied across Dashboard, Visualization, Alert List, Network Devices, Clients, and other application pages.
Visualize	
XCP-9249	Added support for mapping externally authenticated IdP/AD groups to custom roles.

Table 4: Addressed Issues in Extreme AI Expert

Issue ID	Description
DT4N-5366	Restricted AI responses from Priority 3 product list unless explicitly requested, to reduce irrelevant or legacy content.
DT4N-5556	Optimization of RAG flow for implicit Priority 1 (P1) queries, with recent evaluations highlighting areas for improvement.

Known Issues

[Table 5](#) lists the Known Issues in Extreme Platform ONE Networking release 25.5.2-10.

Table 5: Known Issues in release 25.5.2-10

Issue ID	Description
9-dot Menu	
WS-3630	The redirection from the 9 dot menu for a trial is not happening correctly.
XCP-3475, XCP-10803, XCP-11090	Accessing applications from the 9-dot menu fails with Internal Server Errors.
Account Management	

Table 5: Known Issues in release 25.5.2-10 (continued)

Issue ID	Description
WS-775	The Verify Email option in the Account Lockout Notification email takes you to the ExtremeCloud IQ application.
WS-1916	Users with multiple accounts are unable to switch accounts or VIQs.
WS-3199	Navigating to an external user account with no license and refreshing the browser allows a user to continue to access the Extreme Platform ONE Networking menus.
WS-3625	The account is listed incorrectly when switching from ExtremeCloud IQ to Extreme Platform ONE Networking.
XCP-9602	"Unable to resend" error message appears when trying to resend verification email after 30+ minutes on customer creation page.
API	
XIQ-39330	The packet loss metric is incorrectly reported as a raw packet count rather than a percentage in both the API response and the user interface.
XCP-9613	DevX runtime performance dashboard development for API utilization, notifications, and ITSM sync.
XCP-12725	Internal Grafana-based runtime performance dashboard development for API and notification monitoring.
XCP-12727	API rate limiting implementation needed for customer accounts, users, and tokens with appropriate KPI tracking.
XCP-13136	External release type and release notes information is missing for cloud managed device upgrade/firmware versions API. This requires dependency resolution with IT services for complete implementation.
Browser Issues	
NVO-1308	Unable to add or delete tags in Safari browser as pop-ups are not working.
NVO-6837	When using Firefox, the device icons are misaligned in the Physical View.
WS-3662	Acceptance of the Terms & Conditions is not reflected until the page refreshed.
XIQ-37416	Flickering Heatmap issues with 3D mapview when using MacBook with Chrome/Firefox browser.
Contracts	
CFD-14518	Canceled contracts are displayed as active in the Contracts view.
Device Management	
NVO-6878	The Device Inspector does not display the Client tab for some devices.
XCP-5227, XCP-5268	Incorrect "Managed_by" value for locally managed devices.

Table 5: Known Issues in release 25.5.2-10 (continued)

Issue ID	Description
XCP-12743	Bulk delete operations are limited to approximately 250-287 devices due to ExtremeCloud IQ API path parameter constraints. Larger bulk operations will require event-based design implementation for proper scaling.
XCP-13202	Security vulnerabilities are not displayed in the firmware upgrade flow for locally managed switches. Currently, locally managed devices are not in scope for PSIRTS vulnerability reporting.
WS-1947	The maximum number of clients that can be selected to be disconnected is ten in a single request.
Inventory	
WS-2433	Inventory displays an SD-WAN appliance as Disconnected, but Orchestrator shows it as Connected. Also, Extreme Platform ONE Networking does not display the firmware of the SD-WAN devices.
Licensing	
XCP-11193	Linking a portal account with Extreme Platform ONE Networking only licenses fails to redirect users from ExtremeCloud IQ to Extreme Platform ONE Networking.
XCP-11270	A user account with both Extreme Platform ONE Networking and ExtremeCloud IQ licenses is redirected to the ExtremeCloud IQ login page after login, instead of the expected Extreme Platform ONE Networking login page.
Logs	
XCP-11224	The Audit Log displays API denied error log entries, which are not relevant.
MSP	
XCP-11254	Changing a user role from MSP Super Admin to MSP Admin removes their ExtremeCloud IQ Admin role.
XCP-11278	In the MSP view for the U.S. region, the Switch Tenant panel remains open and cannot be dismissed.
Roles	
WS-3519	External users with the Bizops role have access to the Visualization page.
XCP-10308	Manage or Unmanage actions are not performed for the NetSecOps Role.
XCP-13153	Existing RBAC roles (monitor and observer) are converted to tenant admin post GDC upgrade on staging environment.
XIQ-45333	Manage/unmanage actions are not working for EP1 BizOps role users, showing "something went wrong" error.
SSO	
XCP-8507	The login button does not activate for certain SSO-enabled user login instances.
Upgrading	

Table 5: Known Issues in release 25.5.2-10 (continued)

Issue ID	Description
XCP-12707	Individual level upgrade firmware screen does not display data properly once CVEs are expanded in the UI. This is dependent on EC1 team fixes for proper chip overflow behavior.
XCP-12708	PSIRTS vulnerability information is not working properly in the E2E upgrade flow due to data format mismatches between AI Core and AFS/Inventory systems. Version normalization is being implemented to address this issue.
User Interface	
WS-3120	Intermittent logins receive a white screen with an incomplete load of the application.
XCP-5065	Search and Filter does not filter the appliance cluster.
XCP-5043	UCP appliance is misaligned in the table under Asset > Appliance .
XCP-6945	Table alignment for the child devices is not aligned under All > Switch > Appliance .
Visualize	
NVO-7586	Fabric links may not appear in the Fabric Layer View when devices use the default ISIS area ID 1515.fee1.900d.1515.fee1.900d and are running Visualization version 24.5 or older.
NVO-7899	Device Action Configure Fabric needs to be restricted to Extreme Platform ONE Networking compatible buildings only.
NVO-8908	Node custom positions in topology are not retained on browser refresh.
NVO-9398	Some wireless floor plans not loading for Observer role users.
NVO-10726, WS-3519	External users with the Bizops role have access to the Visualization page.

Limitations

Note the following caveats for this release of Extreme Platform ONE Networking.

- Trial Subscriptions are only available for Extreme Platform ONE Networking, Extreme Platform ONE Security, and ExtremeCloud SD-WAN.
- Support for Site-Engine managed devices that are connected to ExtremeCloud IQ is currently limited only to **Inventory**.
- Intermittent issue - the topology gets distorted while changing any node position.
- If all member ports are not in admin UP state, Visualize does not display LAG or MLT.
- Devices discovered through LLDP by Access Points (APs) are not displayed on the canvas in the Physical, Fabric, or Service views. However, they are visible in the Object Inspector.
- Wireless Mesh topology is not supported in the Physical, Access, or Fabric layer views.
- Outdoor sites are not supported in Visualization.