



Extreme Platform ONE Networking v25.6.0-70 Release Notes

New Features, Limitations, and Known Issues

9039497-00 Rev AB
November 2025



Copyright © 2025 Extreme Networks, Inc. All rights reserved.

Legal Notice

Extreme Networks, Inc. reserves the right to make changes in specifications and other information contained in this document and its website without prior notice. The reader should in all cases consult representatives of Extreme Networks to determine whether any such changes have been made.

The hardware, firmware, software or any specifications described or referred to in this document are subject to change without notice.

Trademarks

Extreme Networks and the Extreme Networks logo are trademarks or registered trademarks of Extreme Networks, Inc. in the United States and/or other countries.

All other names (including any product names) mentioned in this document are the property of their respective owners and may be trademarks or registered trademarks of their respective companies/owners.

For additional information on Extreme Networks trademarks, see: <https://www.extremenetworks.com/about-extreme-networks/company/legal/trademarks>

Open Source Declarations

Some software files have been licensed under certain open source or third-party licenses.

End-user license agreements and open source declarations can be found at: <https://www.extremenetworks.com/support/policies/open-source-declaration/>

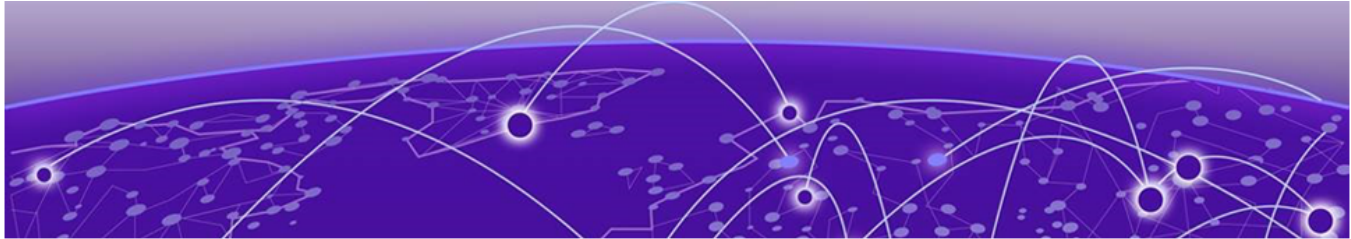
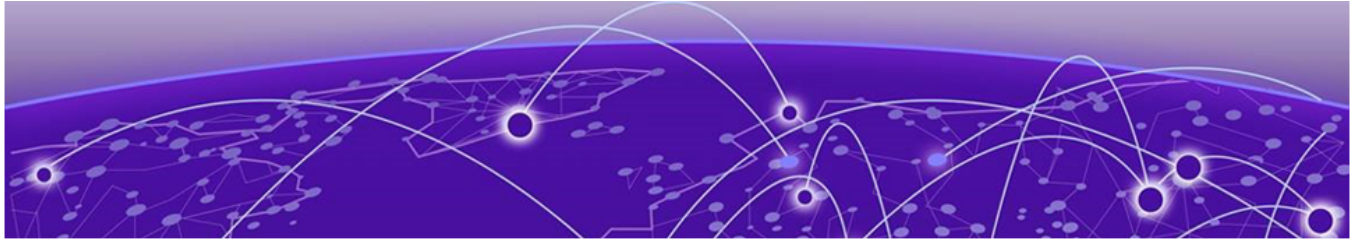


Table of Contents

Abstract.....	4
Help and Support.....	v
General Release Information.....	6
Current Release: 25.6.0-70.....	6
Introduction to Extreme Platform ONE Networking.....	6
Extreme Platform ONE Public IP Address Blocks.....	6
Supported Applications.....	7
Browser Support and Display Settings.....	8
Desktop Browsers.....	8
Display Settings.....	8
New Features.....	9
Addressed Issues.....	12
Known Issues.....	15
Limitations.....	18
Device Support Information.....	19



Abstract

This release notes document for Extreme Platform ONE Networking version 25.6.0-70 provides a comprehensive overview of new features, supported platforms, addressed issues, known limitations, and technical configurations relevant to IT administrators and network engineers. The platform consolidates multi-domain network management into a unified interface with contextual AI support, real-time alerts, and single sign-on (SSO) capabilities. This release introduces support for EXOS/Switch Engine 33.4.1.15, 32.7.3.15-patch1-19, Fabric Engine/VOSS 9.3, and IQ Engine 10.8.5, enabling enhanced onboarding, monitoring, and configuration for a wide range of switches and Wi-Fi 7 access points. Key features include WBA OpenRoaming for AP4020X, Fabric Attach Redundancy, automatic stack member onboarding with license allocation, UL OFDMA, WPA3 Personal Transition Mode, and drag-and-drop image support. The document details over 40 resolved issues across account management, onboarding, licensing, UI, and device management, while highlighting known issues such as API rate limitations, browser-specific UI bugs, and visualization inconsistencies. Revision AB of this document highlights known issues related to the Monitoring > Clients > Users tab. It also outlines critical configuration requirements, such as minimum firmware versions and supported browser environments. This technical document is intended for advanced users managing enterprise-scale network environments.



Help and Support

If you require assistance, contact Extreme Networks using one of the following methods:

Extreme Portal

Search the GTAC (Global Technical Assistance Center) knowledge base; manage support cases and service contracts; download software; and obtain product licensing, training, and certifications.

The Hub

A forum for Extreme Networks customers to connect with one another, answer questions, and share ideas and feedback. This community is monitored by Extreme Networks employees, but is not intended to replace specific guidance from GTAC.

Call GTAC

For immediate support: (800) 998 2408 (toll-free in U.S. and Canada) or 1 (408) 579 2800. For the support phone number in your country, visit www.extremenetworks.com/support/contact.



General Release Information

[Browser Support and Display Settings](#) on page 8

Extreme Platform ONE is a central management platform that simplifies the user experience and provides automation at scale.

Current Release: 25.6.0-70

November 2025

Introduction to Extreme Platform ONE Networking

The following are a few key features:

- **Comprehensive UI:** Provides access to alerts, licensing details, inventory, and firmware updates.
- **Alerts and Notifications:** Find and fix problems quickly. Real-time notifications ensure you receive prompt notifications about system updates and security notices.
- **Contextual AI Support:** Meet your AI Expert-your contextual helper. Powered by the latest in AI technology, AI Expert provides instant support and guidance, ensuring you have the answers you need, when you need them.
- **Single Sign-On (SSO):** Access Extreme Platform ONE Networking applications with a single sign-on, removes the need for multiple credentials.

Extreme Platform ONE Public IP Address Blocks

Data Center	IP Block	Addresses and Ports
Global Data Center (GDC)	44.234.22.92/30 18.194.95.0/28 34.253.190.192/26 3.234.248.0/27	
Australia (AUS)	13.210.3.192/28 18.98.198.80/28	Firewall Address and Port Information
Azure, Canada Central (ACA)	20.151.64.48/28	Firewall Address and Port Information
Azure, US East (AVA)	52.226.89.112/28	Firewall Address and Port Information
Brazil (BR)	18.228.70.16/28	Firewall Address and Port Information

Data Center	IP Block	Addresses and Ports
Germany (FRA)	3.67.81.96/27 18.194.95.0/28	Firewall Address and Port Information
India (IN)	13.232.67.8/29 3.6.70.64/29	Firewall Address and Port Information
Ireland (IE)	34.253.190.192/26	Firewall Address and Port Information
Japan (JP)	18.176.203.112/29 13.231.6.232/29 57.181.58.0/28	Firewall Address and Port Information
Netherlands (NL-GCP)	34.91.82.64/27	Firewall Address and Port Information
Singapore (SG-GCP)	34.87.158.80/28	Firewall Address and Port Information
Spain (ES)	18.101.49.128/27	Firewall Address and Port Information
Sweden (SE)	13.48.186.224/29 13.48.4.184/29 13.48.4.240/28	Firewall Address and Port Information
Switzerland (ACH)	51.107.1.192/28	Firewall Address and Port Information
United Arab Emirates (UAE)	3.28.159.128/28	Firewall Address and Port Information
United Kingdom (UK-AGB)	51.143.233.80/28	Firewall Address and Port Information
US East (VA)	34.202.197.0/26 44.192.245.0/26 3.234.248.0/27	Firewall Address and Port Information
US East 2 (VA2)	34.202.197.0/26 44.192.245.0/26 3.234.248.0/27	Firewall Address and Port Information
US-Iowa (IA-GCP)	34.67.130.64/27	Firewall Address and Port Information
US Ohio (OH)	3.145.235.64/26	Firewall Address and Port Information

Supported Applications

Extreme Platform ONE Networking eliminates the need to log in separately to the Extreme Networks multi-domain network management solutions by unifying them within a single user interface.

For example, if you subscribe to ExtremeCloud IQ, and have a site, you can view all connected sites and onboarded devices from ExtremeCloud IQ and Extreme Platform ONE Networking.

**Note**

The applications available when you log in are specific to the subscription licenses purchased by your organization. Access to applications might also be defined by the role assigned if your organization implements Single Sign-On.

Extreme Platform ONE Networking supports the following applications:

- ExtremeCloud IQ: Provides centralized configuration and network monitoring, reporting, alarms, and statistics for Extreme Networks devices.
- ExtremeCloud SD-WAN: Provides unified wired and wireless management through fabric services. You can enable a secure network, automate application performance management, and create a centralized management of applications with intuitive user experiences.
- Extreme Platform ONE Security: Provides network, application, and device access security within a single solution.
- Extreme Intuitive Insights: Provides cloud-based deployment and monitoring of Zebra hand-held devices.

Browser Support and Display Settings

**Note**

Extreme Platform ONE does not support 32-bit browsers.

Desktop Browsers

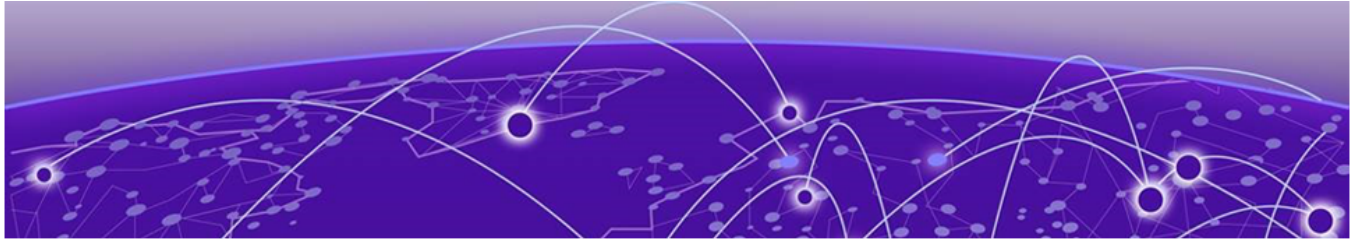
Extreme Platform ONE supports the latest 64-bit versions of the following desktop browsers:

- Chrome
- Edge
- Firefox
- Opera
- Safari

Microsoft Internet Explorer is not supported.

Display Settings

Extreme Platform ONE supports display resolutions of 1280 x 1024 or higher.



New Features

Table 1 lists the new features introduced in the Extreme Platform ONE Networking 25.6.0-70 release.

For more information about Extreme Platform ONE Networking features, see the 25.6.0 User Guide.

Table 1: New Features in release 25.6.0-70

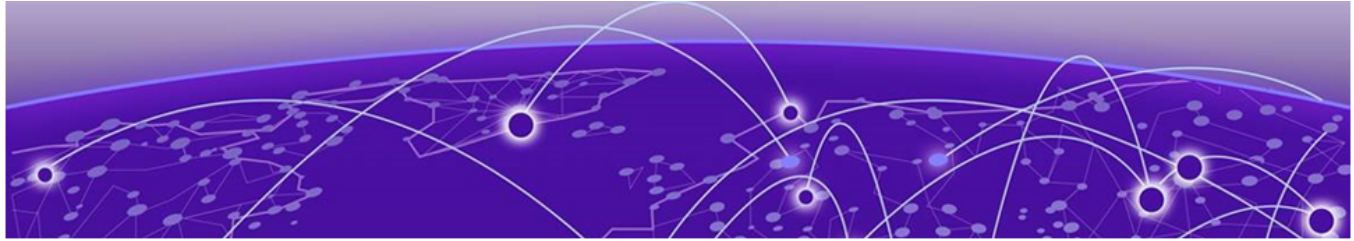
Feature ID	New Feature	Description
XIQ-46592	ExtremeCloud IQ AirDefense Support	ExtremeCloud IQ supports AirDefense on Prem (ADSP) for AP5020.
XIQ-45873	MLO Configuration Beta Label	Added Beta label to the Multi-Link Operation (MLO) enablement button in SSID configuration to indicate feature limitations in the 25.6 release.
XIQ-45850	Fabric Engine/VOSS 9.3.1 Support	Added support for Fabric Engine 9.3.1 to enable onboarding, monitoring, configuration, and drag-and-drop image management for VOSS XIQ supported SKUs including Universal switches, VSP7400, and VSP4900.
XIQ-45847	Fabric Engine/VOSS 8.10.9 Support	Added support for Fabric Engine 8.10.9 to enable onboarding, monitoring, configuration, and drag-and-drop image management for XAI400 switches.
XIQ-43683	Case Insensitive User Name Formatting	Implemented case-insensitive username validation across all user types including local PPSK, cloud PPSK, local RADIUS, and cloud RADIUS to prevent duplicate entries and configuration conflicts.
XIQ-41933	AP5020 WiFi Mesh Support	Added WiFi mesh and wireless bridging support for AP5020 including 6GHz band meshing between AP5020 units or with AP4000, as well as 2.4GHz and 5GHz band support.
XIQ-41840	Standards-Based GRE Failover	Implemented standards-based GRE tunnel failover mechanism allowing APs to automatically switch to secondary tunnel endpoints in different geographic locations for geographic redundancy.
XIQ-40618	EXOS/Switch Engine 33.5 GA Image Download	Added EXOS/Switch Engine 33.5 GA image download support for all EXOS/Switch Engine ExtremeCloud IQ supported SKUs as the latest image version.

Table 1: New Features in release 25.6.0-70 (continued)

Feature ID	New Feature	Description
XIQ-40617	EXOS/Switch Engine 33.5 Device Support	Added support for EXOS/Switch Engine 33.5 onboarding, monitoring, and configuration for all EXOS/Switch Engine ExtremeCloud IQ supported SKUs via local image management.
XIQ-40599	Multiple Fabric Engine/VOSS Version Support	Added support for multiple VOSS/Fabric Engine versions including 9.3.1, 9.2.2, and 8.10.9 for onboarding, monitoring, configuration, and download image capabilities across all supported Universal Switches.
XCP-12796	XIQ License Description Updates	Updated license descriptions for ExtremeCloud IQ Pilot, Navigator, and CoPilot subscriptions from "SaaS" to "Right-to-use" terminology.
NVO-10726	RBAC Visualization Access Control	Restricted external users with BizOps role from accessing the visualization page to ensure proper role-based access control.
NVO-9582	Unified Alert System	Implemented unified alert counting logic across Extreme Platform ONE Networking showing unacknowledged critical alerts from the last 24 hours in Geographical View, Physical View Quick Navigation, and Object Inspector.
NVO-9398	Wireless Floor Plan Observer Access	Added wireless floor plan loading capability for users assigned the Observer RBAC role to enable visualization access for read-only users.
NVO-8341	Object Inspector Diagnostics Navigation	Implemented navigation from Object Inspector Diagnostics widgets to Device 360 tabs for both wired and wireless devices, enabling quick access to detailed device information.
NVO-7887	Visualization Enhancements	Added Geographical View map controls including settings and search functionality, renamed Quick Sites Navigation to Quick Location Navigation , removed non-functional minimap, and renamed FloorPlan view to Heat Map view.
NVO-7215	VLAN Probe for Fabric Engine	Implemented VLAN Probe functionality through cloud workflow for Fabric Engine devices in the Object Inspector for Managed Switches.
NVO-6440	Fabric Engine 7830 Universal Switch Support	Added support for onboarding, monitoring, and configuration of Fabric Engine 7830 Universal switch including various VIM options, dual management ports, and Premier License support in Extreme Platform ONE Networking.
NVO-6019	Language Switcher Support	Implemented language switcher functionality for Visualization with translated error and success messages to support multiple languages across the platform.

Table 1: New Features in release 25.6.0-70 (continued)

Feature ID	New Feature	Description
NVO-5762	Managed AP Aggregation in Fabric View	Implemented visual aggregation of managed and discovered APs with Fabric Attach in Fabric Layer when aggregated in Physical layer to improve visualization clarity.
NVO-4524	SSH Launch Options	Added SSH shell launch options in the terminal for Managed Cloud-onboarded Fabric Engine and Switch Engine devices through the right-click menu in the Physical View and Access View (visualize).
NVO-4324	Service Canvas Movement	Enabled movement capability for the Service Canvas layer in the end-to-end view to allow users to view both Object Inspector and service layer content simultaneously.
HOS-24041	IQ Engine AirDefense Support	IQ Engine supports AirDefense on Prem (ADSP) for AP5020.



Addressed Issues

Table 2 lists Addressed Issues in Extreme Platform ONE Networking release 25.6.0-70.

Table 2: Addressed Issues in release 25.6.0-70

Issue ID	Description
Account Management	
WS-3535	Fixed an issue where the UI loaded data for the previously selected account briefly before displaying correct data when switching accounts in Extreme Platform ONE Networking.
WS-3415	Addressed the issue where logging out from Extreme Platform ONE Networking with multiple tabs open was slow and sometimes failed to automatically log out ExtremeCloud IQ tabs.
WS-2789	Addressed the issue where backend verification was not performed when sending email notifications, allowing invalid data to be accepted and processed.
Browser Issues	
NVO-1308	Addressed the issue where pop-up windows for adding and deleting tags were not working in Safari browser.
NVO-6837	Fixed display issue where device icons were not properly centered in circles when using Firefox browser in Physical View .
Device Management	
XIQ-43050	Fixed an issue where Tunnel Concentrator services could not be configured under multiple network profiles, which prevented users from applying common TC services across different profiles as required.
XIQ-42997	Addressed the issue with AP4060/X configuration by adding Indoor/Outdoor mode selection and vertical/horizontal orientation options in Device360 and device templates.
XIQ-41718	Fixed an issue where universal ports on the 5120 switch could not be selected from the template wireframe for LAG creation, requiring users to manually add ports via the aggregate port button.
XIQ-41152	Fixed an issue where configuration pushes to Tunnel Concentrators were not automatically triggered when AP IP addresses changed due to AP or router power cycles, resulting in manual intervention requirements.

Table 2: Addressed Issues in release 25.6.0-70 (continued)

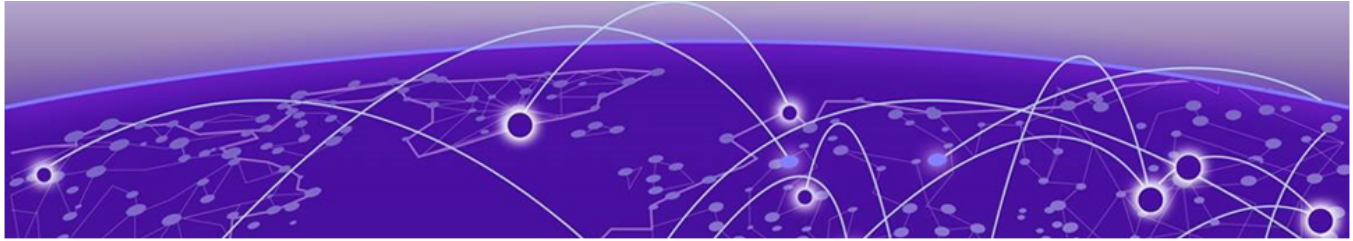
Issue ID	Description
XIQ-27402	Fixed an issue by implementing WPA3-Enterprise 192-bit mode support for deployments requiring higher security standards in government, defense, and industrial environments.
XIQ-21339	Addressed the issue where ExtremeCloud IQ did not display an error when aggregation was enabled with rate-limit configuration, which caused configuration conflicts at the device level.
XIQ-19509	Fixed an issue where configuring eth0 interface with minimum speed and half duplex transmission caused APs to go offline and reboot, reverting the configuration back to full duplex.
XIQ-19498	Addressed the issue where changing the transmission type on AP5010 eth0 interface at maximum speed generated unexpected delta CLI for speed configuration.
XIQ-19368	Addressed the issue where UI overrides Supplemental CLI option was incorrectly pushing Supplemental CLI configuration instead of UI configuration for multicast rate-limit settings.
Licensing	
XCP-11193	Addressed the issue where users were not redirected to Extreme Platform ONE Networking after linking a portal account with Extreme Platform ONE Networking licenses only on ExtremeCloud IQ , allowing unauthorized access to ExtremeCloud IQ features.
WS-3199	Fixed an issue where external users without licenses could access all Extreme Platform ONE Networking menu items after performing a browser refresh when switching to accounts without linked licenses.
User Interface	
XIQ-46181	Fixed an issue where the Applications tab in the Clients page displayed a 400 Bad Request error, preventing data from loading properly.
XIQ-45511	Addressed the issue where the Change Subscription Level menu option was deprecated and removed from the Network Devices Actions menu to align with the new Advanced and CoPilot subscription implementation.
XIQ-41416	Addressed the issue where LLDP neighbor System capabilities and Enabled capabilities data was not displayed in the ExtremeCloud IQ interface after APs reported this information.
XIQ-33709	Addressed the issue where multiple node alias entries were missing from ExtremeCloud IQ client pages while the device CLI displayed all entries correctly.
XIQ-19379	Fixed an issue where APs were occasionally not deleted from ExtremeCloud IQ when released to cloud from IQC in managed case scenarios.
XIQ-19320	Fixed an issue where WiFi interface transmission power values were not updated in the Managed Device page after bulk edit operations.

Table 2: Addressed Issues in release 25.6.0-70 (continued)

Issue ID	Description
Visualize	
NVO-12162	Fixed an issue where mixed port speed LAG configuration was not blocked on the UI for FE7830 platforms, causing configuration push failures.
NVO-12147	Addressed the issue where Fabric Configuration on 7830-32CE-8DE was unable to configure redistribution for IP Shortcuts due to protocol IP version validation errors.
NVO-9346	Fixed an issue where wireless APs were missing from fabric view after fresh onboarding of FAProxy and wireless APs, requiring manual discovery initiation to display them.

Table 3: Addressed Issues in Extreme AI Expert

Issue ID	Description
XESS-2042	Added support for AP4020X with shared sensing capability for 2.4GHz and 5GHz frequencies to enable Essentials applications and ADSP on-premises deployment.
XESS-2044	Added support for AP4020FX with shared sensing capability for 2.4GHz and 5GHz frequencies to enable Essentials applications and ADSP on-premises deployment.
XESS-2046	Added support for AP4060/X with shared sensing capability for 2.4GHz and 5GHz frequencies to enable Essentials applications and ADSP on-premises deployment.
XESS-2089	Enhanced the Guest Essentials Self Registration Page by replacing checkboxes with radio buttons for username configuration in Passcode-based login to the Captive Web Portal, ensuring users select only one option and preventing errors from multiple selections.



Known Issues

Table 4 lists the Known Issues in Extreme Platform ONE Networking release 25.6.0-70.

Table 4: Known Issues in release 25.6.0-70

Issue ID	Description
9-dot Menu	
XCP-3475, XCP-10803, XCP-11090	Accessing applications from the 9-dot menu fails with Internal Server Errors.
Account Management	
WS-775	The Verify Email option in the Account Lockout Notification email takes you to the ExtremeCloud IQ application.
WS-1916	Users with multiple accounts are unable to switch accounts or VIQs.
WS-3625	The account is listed incorrectly when switching from ExtremeCloud IQ to Extreme Platform ONE Networking.
API	
XIQ-39330	The packet loss metric is incorrectly reported as a raw packet count rather than a percentage in both the API response and the user interface.
XCP-9613	DevX runtime performance dashboard development for API utilization, notifications, and ITSM sync.
XCP-12725	Internal Grafana-based runtime performance dashboard development for API and notification monitoring.
XCP-12727	API rate limiting implementation needed for customer accounts, users, and tokens with appropriate KPI tracking.
XCP-13136	External release type and release notes information is missing for cloud managed device upgrade/firmware versions API. This requires dependency resolution with IT services for complete implementation.
Browser Issues	
XIQ-44593	An issue exists where AFC Status and GEO Location widgets display visual artifacts when viewed on MacBook Pro using Safari browser.
Device Management	
XCP-5227, XCP-5268	Incorrect "Managed_by" value for locally managed devices.

Table 4: Known Issues in release 25.6.0-70 (continued)

Issue ID	Description
XCP-12743	Bulk delete operations are limited to approximately 250-287 devices due to ExtremeCloud IQ API path parameter constraints. Larger bulk operations will require event-based design implementation for proper scaling.
XCP-13202	Security vulnerabilities are not displayed in the firmware upgrade flow for locally managed switches. Currently, locally managed devices are not in scope for PSIRTS vulnerability reporting.
XIQ-33498	An issue exists where client mode and backhaul mesh link options need to be disabled on AP5050U/D 6GHz FCC configurations to ensure proper regulatory compliance.
XIQ-34724	An issue exists where delta configuration push fails for AP5020 Wifi0 with dual 5G mode when 5G-Low channels are not supported in countries like Pakistan.
XIQ-46182	An issue exists where the EXOS/Switch Engine 31.7.4.2-patch1-7 cannot be onboarded, monitored, or configured through drag-and-drop image management for all EXOS/Switch Engine ExtremeCloud IQ supported SKUs.
Inventory	
WS-2433	Inventory displays an SD-WAN appliance as Disconnected, but Orchestrator shows it as Connected. Also, Extreme Platform ONE Networking does not display the firmware of the SD-WAN devices.
Licensing	
XCP-11270	A user account with both Extreme Platform ONE Networking and ExtremeCloud IQ licenses is redirected to the ExtremeCloud IQ login page after login, instead of the expected Extreme Platform ONE Networking login page.
Logs	
XCP-11224	The Audit Log displays API denied error log entries, which are not relevant.
MSP	
XCP-11254	Changing a user role from MSP Super Admin to MSP Admin removes their ExtremeCloud IQ Admin role.
XCP-11278	In the MSP view for the U.S. region, the Switch Tenant panel remains open and cannot be dismissed.
Roles	
WS-3519	External users with the Bizops role have access to the Visualization page.
XCP-10308	Manage or Unmanage actions are not performed for the NetSecOps role.
XCP-13153	Existing RBAC roles (monitor and observer) are converted to tenant admin post GDC upgrade on staging environment.

Table 4: Known Issues in release 25.6.0-70 (continued)

Issue ID	Description
NVO-10726	An issue exists where external users with BizOps role have unauthorized access to the Visualization page despite role restrictions.
XIQ-45333	Manage/unmanage actions are not working for Extreme Platform ONE Networking BizOps role users, showing "something went wrong" error.
XIQ-45477	An issue exists where Extreme Platform ONE Networking NetSecOps role users with Write access to inventory cannot perform Manage/Unmanage actions, resulting in permission errors.
SSO	
XCP-8507	The login button does not activate for certain SSO-enabled user login instances.
Upgrading	
XCP-12707	Individual level upgrade firmware screen does not display data properly once CVEs are expanded in the UI. This is dependent on ECI team fixes for proper chip overflow behavior.
User Interface	
WS-3120	Intermittent logins receive a white screen with an incomplete load of the application.
XCP-5065	Search and Filter does not filter the appliance cluster.
XIQ-42050	An issue exists where FIPS enabled filter in Manage Application page displays all applications instead of filtering to show only FIPS-enabled applications.
XIQ-42051	An issue exists where FIPS enabled filter in Manage Summary widget shows inaccurate data for Top Application Groups , Top Usage , and Total Application Usage metrics.
XIQ-46203	On the Monitoring > Clients > Users tab, the Source value displays Other instead of Others.
XIQ-46206, XIQ-46418	Monitoring > Clients > Users : Filtering sessions by duration results in displaying all users regardless of the selected time range, and filtering sessions by an individual site shows zero results.
XIQ-46279	Data usage for user is inconsistent. Real-time data usage traffic fails to update after client reconnection, showing only historic usage instead of current traffic.
XIQ-46469, XIQ-46474	Monitoring > Clients > Users : Sort functionality on Source , Status , and Session Duration columns is not working as expected.
XIQ-46511	Monitoring > Clients > Users : Custom Time filter is not displaying proper results. It displays incorrect user entries.
XIQ-46588	Monitoring > Clients > Users functionality is restricted to 200 entries. During scale testing with 500,000 users, the total count remains fixed at 200, and filter metadata XAPI fails with a 400 error.
XIQ-46637	The User tab returns a 400 error when no active clients are connected and only historic clients (older than 1 day) are present.

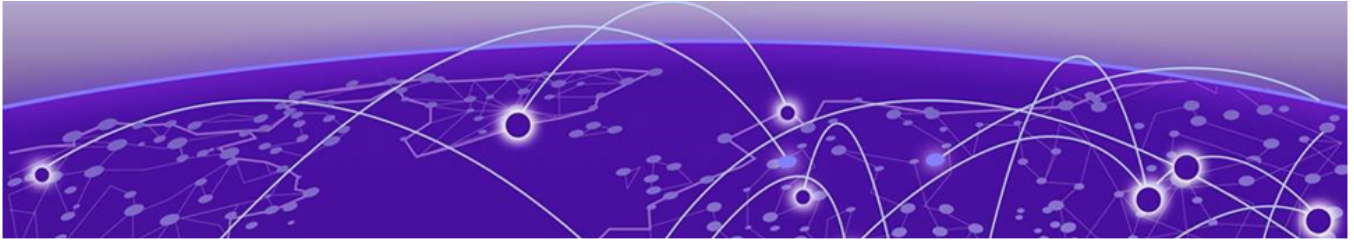
Table 4: Known Issues in release 25.6.0-70 (continued)

Issue ID	Description
Visualize	
NVO-7899	Device action Configure Fabric needs to be restricted to Extreme Platform ONE Networking compatible buildings only.
NVO-8908	Node custom positions in topology are not retained on browser refresh.
NVO-9398	Some wireless floor plans not loading for Observer role users.
NVO-10726, WS-3519	External users with the Bizops role have access to the Visualization page.

Limitations

Note the following caveats for this release of Extreme Platform ONE Networking.

- Trial Subscriptions are only available for Extreme Platform ONE Networking, Extreme Platform ONE Security, and ExtremeCloud SD-WAN.
- Support for Site-Engine managed devices that are connected to ExtremeCloud IQ is currently limited only to **Inventory**.
- Intermittent issue - the topology gets distorted while changing any node position.
- If all member ports are not in admin UP state, Visualize does not display LAG or MLT.
- Devices discovered through LLDP by Access Points (APs) are not displayed on the canvas in the Physical, Fabric, or Service views. However, they are visible in the Object Inspector.
- Wireless Mesh topology is not supported in the Physical, Access, or Fabric layer views.
- Outdoor sites are not supported in Visualization.



Device Support Information

Visualize does not show devices on topology maps if they do not meet the minimum firmware version requirement:

- VOSS or Fabric Engine devices must be 9.2.1.0 or later.
- EXOS or Switch Engine must be 33.3 or later.

Firmware compatibility is critical for feature functionality. New features may require specific firmware versions to operate as intended. The following table lists the minimum firmware versions required for the new features introduced in this release:

Device Family	Version	Devices
Switch Engine (single/ stacked)	33.3	<ul style="list-style-type: none"> • 4120 • 4220 • 5120 • 5320 • 5420 • 5520 • 5720 • 7520 • 7720
EXOS	33.3	<ul style="list-style-type: none"> • X435-8P-2T-W • X435-24T-4S • X435-24P-4S • X435-8T-4S • X435-8P-4S • X440-G2-12p-10GE4 • X440-G2-12t-10GE4 • X440-G2-24p-10GE4 • X440-G2-24t-10GE4 • X440-G2-48p-10GE4 • X440-G2-48t-10GE4 • X450-G2-24p-GE4 • X450-G2-24p-10GE4 • X450-G2-48p-10GE4 • X460-G2-16mp-32p-10GE4 • X460-G2-24p-10GE4 • X460-G2-24p-GE4 • X460-G2-24p-24hp-10GE4 • X460-G2-24t-10GE4 • X460-G2-24t-GE4 • X460-G2-24t-24ht-10GE4 • X460-G2-24x-10GE4 • X460-G2-48p-10GE4 • X460-G2-48t-10GE4 • X460-G2-48t-GE4 • X460-G2-48x-10GE4 • X465-24W • X465-48W • X465-24MU • X465-48P • X465-24MU-24W

Device Family	Version	Devices
Fabric Engine	9.2.1.0	<ul style="list-style-type: none"> • 4120 • 4220 • 5120 • 5320 • 5420 • 5520 • 5720 • 7520 • 7720
VOSS	9.2.1.0	<ul style="list-style-type: none"> • VSP7432CQ • VSP7400-48Y • VSP4900-48P • VSP4900-24XE • VSP4900-24S • VSP4900-12MXU-12XE
IQ Engine Access Point	10.8.5	<ul style="list-style-type: none"> • AP302W • AP305C • AP305CX • AP3000 • AP3000X • AP4000 • AP4020 • AP410C • AP460C • AP460S6C • AP460S12C • AP5010 • AP5020 • AP5050U • AP5050D • AP510C/CX • AP630 • AP650 • AP650X
ExtremeCloud Edge (UCP)	v5.12.01	<ul style="list-style-type: none"> • 1130C • 2130C • 3150C • 3160C • 4120C