



# Fabric Engine and VOSS Version 9.1 Feature Matrix

Configuration and Compatibility

9039039-00 Rev AB  
October 2024



Copyright © 2024 Extreme Networks, Inc.

## Legal Notice

Extreme Networks, Inc. reserves the right to make changes in specifications and other information contained in this document and its website without prior notice. The reader should in all cases consult representatives of Extreme Networks to determine whether any such changes have been made.

The hardware, firmware, software or any specifications described or referred to in this document are subject to change without notice.

## Trademarks

Extreme Networks and the Extreme Networks logo are trademarks or registered trademarks of Extreme Networks, Inc. in the United States and/or other countries.

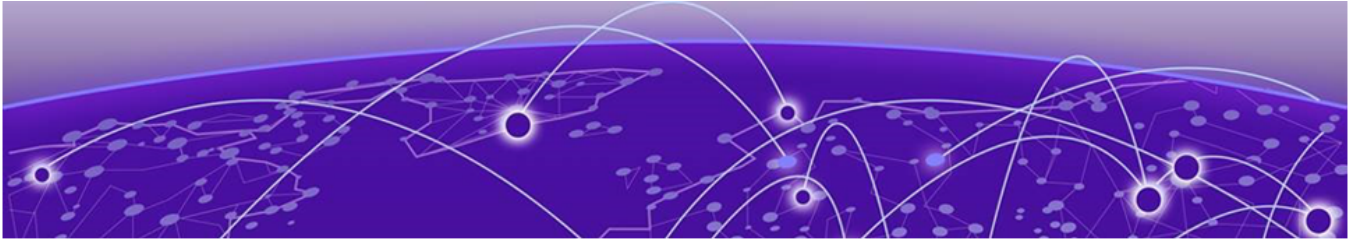
All other names (including any product names) mentioned in this document are the property of their respective owners and may be trademarks or registered trademarks of their respective companies/owners.

For additional information on Extreme Networks trademarks, see: <https://www.extremenetworks.com/about-extreme-networks/company/legal/trademarks>

## Open Source Declarations

Some software files have been licensed under certain open source or third-party licenses.

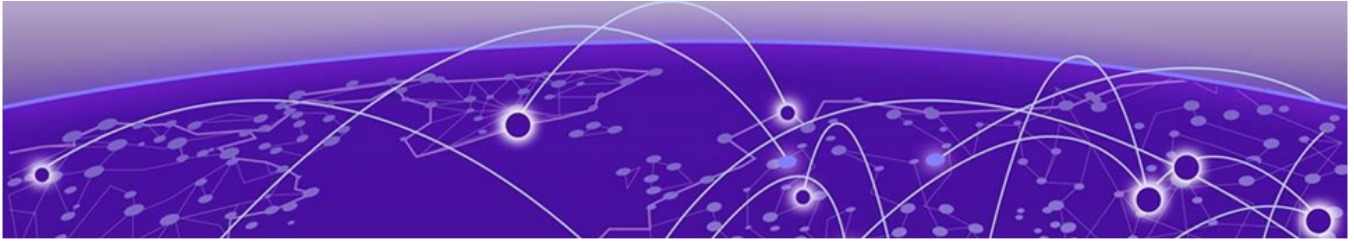
End-user license agreements and open source declarations can be found at: <https://www.extremenetworks.com/support/policies/open-source-declaration/>



# Table of Contents

---

<b>Abstract.....</b>	<b>4</b>
<b>Preface.....</b>	<b>5</b>
Purpose.....	5
How to Use This Document.....	6
Documentation and Training.....	6
Open Source Declarations.....	6
Training.....	6
Help and Support.....	7
Subscribe to Product Announcements.....	7
Send Feedback.....	8
<b>Document Revision Changes.....</b>	<b>9</b>
<b>Features A to C.....</b>	<b>10</b>
<b>Features D to F.....</b>	<b>29</b>
<b>Features G to I.....</b>	<b>57</b>
<b>Features J to L.....</b>	<b>71</b>
<b>Features M to O.....</b>	<b>79</b>
<b>Features P to R.....</b>	<b>91</b>
<b>Features S to U.....</b>	<b>104</b>
<b>Features V to X.....</b>	<b>119</b>
<b>Features Y and Z.....</b>	<b>125</b>



## Abstract

---

This Feature Matrix document for Fabric Engine and VOSS version 9.1 provides a comprehensive overview of the supported features across various ExtremeSwitching and Virtual Services Platform (VSP) product families. It details the introduction of specific functionalities, feature compatibility, and support conditions for different hardware models. The document is structured alphabetically by feature and includes information on which software release first introduced support for each feature. It also highlights exceptions, restrictions, and hardware capabilities related to the implementation of these features. The matrix serves as a reference to determine feature availability on specific products.



# Preface

---

[Purpose](#) on page 5

[Documentation and Training](#) on page 6

[Help and Support](#) on page 7

[Send Feedback](#) on page 8

Read the following topics to learn about:

- The meanings of text formats used in this document.
- Where you can find additional information and help.
- How to reach us with questions and comments.

## Purpose

---

This document provides information on features in Extreme Networks Fabric Engine™ and VSP Operating System Software (VOSS).

This release of Fabric Engine runs on the following product families:

- ExtremeSwitching 5320 Series
- ExtremeSwitching 5420 Series
- ExtremeSwitching 5520 Series
- ExtremeSwitching 5720 Series
- ExtremeSwitching 7520 Series
- ExtremeSwitching 7720 Series



### Note

Prior to Fabric Engine 8.6, 5520 Series and 5420 Series platforms ran VOSS. VOSS support ends for these platforms with VOSS 8.5.x. Unless otherwise noted, feature support introduced in earlier VOSS releases is also available in Fabric Engine releases.

This release of VOSS runs on the following product families:

- ExtremeSwitching VSP 4900 Series
- ExtremeSwitching VSP 7400 Series

## How to Use This Document

This document identifies the release that first introduced feature support on a hardware product. Each new release includes all the features from previous releases unless specifically stated otherwise. Use this document to determine if features are supported on your product.



### Note

Different models within a product family can be introduced in different software releases. The tables in this document include the earliest release number. To understand which release is the minimum software release for each model, see the Network Operating System (NOS) Release Notes.

This document arranges the features alphabetically, based on how those features are included in the NOS User Guide. The tables in this document also appear in the conceptual feature content of the NOS User Guide

The Release introduced column in the tables provides the following information:

- If the feature is supported, it indicates the Release the feature support was introduced.
- It indicates support exceptions within a product family. For example, if only 1 of 14 models does not support the feature, meaning the other 13 models do support the feature.
- It indicates if any of the models support the feature but with restrictions or conditions. For example, specific models only support the feature on specific ports.

This document distinguishes between hardware that is not capable of supporting a feature (Not Applicable) and hardware that is capable of supporting a feature but does not (Not Supported).

## Documentation and Training

---

Find Extreme Networks product information at the following locations:

[Current Product Documentation](#)

[Release Notes](#)

[Hardware and Software Compatibility](#) for Extreme Networks products

[Extreme Optics Compatibility](#)

[Other Resources](#) such as articles, white papers, and case studies

## Open Source Declarations

Some software files have been licensed under certain open source licenses. Information is available on the [Open Source Declaration](#) page.

## Training

Extreme Networks offers product training courses, both online and in person, as well as specialized certifications. For details, visit the [Extreme Networks Training](#) page.

---

## Help and Support

---

If you require assistance, contact Extreme Networks using one of the following methods:

### Extreme Portal

Search the GTAC (Global Technical Assistance Center) knowledge base; manage support cases and service contracts; download software; and obtain product licensing, training, and certifications.

### The Hub

A forum for Extreme Networks customers to connect with one another, answer questions, and share ideas and feedback. This community is monitored by Extreme Networks employees, but is not intended to replace specific guidance from GTAC.

### Call GTAC

For immediate support: (800) 998 2408 (toll-free in U.S. and Canada) or 1 (408) 579 2800. For the support phone number in your country, visit [www.extremenetworks.com/support/contact](http://www.extremenetworks.com/support/contact).

Before contacting Extreme Networks for technical support, have the following information ready:

- Your Extreme Networks service contract number, or serial numbers for all involved Extreme Networks products
- A description of the failure
- A description of any actions already taken to resolve the problem
- A description of your network environment (such as layout, cable type, other relevant environmental information)
- Network load at the time of trouble (if known)
- The device history (for example, if you have returned the device before, or if this is a recurring problem)
- Any related RMA (Return Material Authorization) numbers

## Subscribe to Product Announcements

You can subscribe to email notifications for product and software release announcements, Field Notices, and Vulnerability Notices.

1. Go to [The Hub](#).
2. In the list of categories, expand the **Product Announcements** list.
3. Select a product for which you would like to receive notifications.
4. Select **Subscribe**.
5. To select additional products, return to the **Product Announcements** list and repeat steps 3 and 4.

You can modify your product selections or unsubscribe at any time.

## Send Feedback

---

The User Enablement team at Extreme Networks has made every effort to ensure that this document is accurate, complete, and easy to use. We strive to improve our documentation to help you in your work, so we want to hear from you. We welcome all feedback, but we especially want to know about:

- Content errors, or confusing or conflicting information.
- Improvements that would help you find relevant information.
- Broken links or usability issues.

To send feedback, email us at [documentation@extremenetworks.com](mailto:documentation@extremenetworks.com).

Provide as much detail as possible including the publication title, topic heading, and page number (if applicable), along with your comments and suggestions for improvement.





# Document Revision Changes

---

The following table identifies changes between revisions of the same release document.

**Table 1: 9.1 Feature Support Matrix revision changes**

Revision	Change
AA	Initial revision for new release
AB	Added Virtual NNI links for Multi-area SPB Boundary Nodes support for 5720 Series.



## Features A to C

**Table 2: Access Control Entry product support**

Feature	Product	Release introduced
QoS Access Control Entries (ACE)	5320 Series	Fabric Engine 8.6
	5420 Series	VOSS 8.4
	5520 Series	VOSS 8.2.5
	5720 Series	Fabric Engine 8.7
	7520 Series	Fabric Engine 8.10
	7720 Series	Fabric Engine 8.10
	VSP 4900 Series	VOSS 8.1
	VSP 7400 Series	VOSS 8.0
Security ACEs	5320 Series	Fabric Engine 8.6
	5420 Series	VOSS 8.4
	5520 Series	VOSS 8.2.5
	5720 Series	Fabric Engine 8.7
	7520 Series	Fabric Engine 8.10
	7720 Series	Fabric Engine 8.10
	VSP 4900 Series	VOSS 8.1
	VSP 7400 Series	VOSS 8.0
IPv4 ACL filter enhancement - Apply ACE with both Security and QoS actions	5320 Series	Fabric Engine 8.6
	5420 Series	Fabric Engine 8.7
	5520 Series	Fabric Engine 8.7
	5720 Series	Fabric Engine 8.7
	7520 Series	Fabric Engine 8.10
	7720 Series	Fabric Engine 8.10
	VSP 4900 Series	Not Supported
	VSP 7400 Series	VOSS 8.7

**Table 2: Access Control Entry product support (continued)**

Feature	Product	Release introduced
Filter enhancement - Apply ACE to Routed Packets only	5320 Series	Fabric Engine 8.6
	5420 Series	VOSS 8.4
	5520 Series	VOSS 8.4
	5720 Series	Fabric Engine 8.7
	7520 Series	Fabric Engine 8.10
	7720 Series	Fabric Engine 8.10
	VSP 4900 Series	VOSS 8.4
	VSP 7400 Series	VOSS 8.4
Policy Based Routing (redirect-next-hop)	5320 Series	Fabric Engine 8.6
	5420 Series	VOSS 8.4
	5520 Series	VOSS 8.2.5
	5720 Series	Fabric Engine 8.7
	7520 Series	Fabric Engine 8.10
	7720 Series	Fabric Engine 8.10
	VSP 4900 Series	VOSS 8.1
	VSP 7400 Series	VOSS 8.0
Policy Based Routing (redirect-next-hop) with VRF support	5320 Series	Fabric Engine 8.6 Only 5320-48P-8XE and 5320-48T-8XE support more than one VRF with IP configuration.
	5420 Series	VOSS 8.4
	5520 Series	VOSS 8.2.5
	5720 Series	Fabric Engine 8.7
	7520 Series	Fabric Engine 8.10
	7720 Series	Fabric Engine 8.10
	VSP 4900 Series	VOSS 8.1
	VSP 7400 Series	VOSS 8.0

**Table 3: Access Control List product support**

Feature	Product	Release introduced
Access Control List (ACL)-based filtering, including egress ACLs, ingress ACLs, Layer 2 to Layer 4	5320 Series	Fabric Engine 8.6
	5420 Series	VOSS 8.4
	5520 Series	VOSS 8.2.5
	5720 Series	Fabric Engine 8.7

**Table 3: Access Control List product support (continued)**

Feature	Product	Release introduced
filtering, port-based, and VLAN-based	7520 Series	Fabric Engine 8.10
	7720 Series	Fabric Engine 8.10
	VSP 4900 Series	VOSS 8.1
	VSP 7400 Series	VOSS 8.0
InVSN Filter	5320 Series	Fabric Engine 8.6
	5420 Series	VOSS 8.4
	5520 Series	VOSS 8.2.5
	5720 Series	Fabric Engine 8.7
	7520 Series	Fabric Engine 8.10
	7720 Series	Fabric Engine 8.10
	VSP 4900 Series	VOSS 8.1
	VSP 7400 Series	VOSS 8.0
IPv6 ingress filters	5320 Series	Fabric Engine 8.6
	5420 Series	VOSS 8.4
	5520 Series	VOSS 8.2.5
	5720 Series	Fabric Engine 8.7
	7520 Series	Fabric Engine 8.10
	7720 Series	Fabric Engine 8.10
	VSP 4900 Series	VOSS 8.1
	VSP 7400 Series	VOSS 8.0
IPv6 egress filters	5320 Series	Fabric Engine 8.6
	5420 Series	VOSS 8.4
	5520 Series	VOSS 8.2.5
	5720 Series	Fabric Engine 8.7
	7520 Series	Fabric Engine 8.10
	7720 Series	Fabric Engine 8.10
	VSP 4900 Series	VOSS 8.1
	VSP 7400 Series	VOSS 8.0

**Table 3: Access Control List product support (continued)**

Feature	Product	Release introduced
IPv6 ACL DSCP Remarking	5320 Series	Fabric Engine 8.6
	5420 Series	VOSS 8.5
	5520 Series	VOSS 8.5
	5720 Series	Fabric Engine 8.7
	7520 Series	Fabric Engine 8.10
	7720 Series	Fabric Engine 8.10
	VSP 4900 Series	VOSS 8.5
	VSP 7400 Series	VOSS 8.5

**Table 4: Address Resolution Protocol product support**

Feature	Product	Release introduced
Address Resolution Protocol (ARP) including Proxy ARP and Static ARP	5320 Series	Fabric Engine 8.6
	5420 Series	VOSS 8.4
	5520 Series	VOSS 8.2.5
	5720 Series	Fabric Engine 8.7
	7520 Series	Fabric Engine 8.10
	7720 Series	Fabric Engine 8.10
	VSP 4900 Series	VOSS 8.1
	VSP 7400 Series	VOSS 8.0
Gratuitous ARP filtering	5320 Series	Fabric Engine 8.6
	5420 Series	VOSS 8.4
	5520 Series	VOSS 8.2.5
	5720 Series	Fabric Engine 8.7
	7520 Series	Fabric Engine 8.10
	7720 Series	Fabric Engine 8.10
	VSP 4900 Series	VOSS 8.1
	VSP 7400 Series	VOSS 8.0

**Table 5: Advanced Feature Bandwidth Reservation product support**

Feature	Product	Release introduced
Advanced Feature Bandwidth Reservation  <b>Note:</b>	5320 Series	Fabric Engine 8.6 Not supported on 5320-16P-4XE or 5320-16P-4XE-DC
	5420 Series	VOSS 8.4

**Table 5: Advanced Feature Bandwidth Reservation product support (continued)**

Feature	Product	Release introduced
If your switch does not have this boot flag, it is because the hardware reserves the bandwidth automatically with no user interaction.	5520 Series	VOSS 8.2.5
	5720 Series	Fabric Engine 8.7
	7520 Series	Fabric Engine 8.10
	7720 Series	Fabric Engine 8.10
	VSP 4900 Series	Not Supported
	VSP 7400 Series	VOSS 8.0

**Table 6: Alternative routes product support**

Feature	Product	Release introduced
Alternative routes for IPv4	5320 Series	Fabric Engine 8.6
	5420 Series	VOSS 8.4
	5520 Series	VOSS 8.2.5
	5720 Series	Fabric Engine 8.7
	7520 Series	Fabric Engine 8.10
	7720 Series	Fabric Engine 8.10
	VSP 4900 Series	VOSS 8.1
	VSP 7400 Series	VOSS 8.0
Alternative routes for IPv6	5320 Series	Fabric Engine 8.6
	5420 Series	VOSS 8.4
	5520 Series	VOSS 8.2.5
	5720 Series	Fabric Engine 8.7
	7520 Series	Fabric Engine 8.10
	7720 Series	Fabric Engine 8.10
	VSP 4900 Series	VOSS 8.1
	VSP 7400 Series	VOSS 8.0

**Table 7: Anycast IP Gateway product support**

Feature	Product	Release introduced
	5320 Series	Fabric Engine 9.1

**Table 7: Anycast IP Gateway product support (continued)**

Feature	Product	Release introduced
Anycast IP Gateway	5420 Series	Fabric Engine 9.1
	5520 Series	Fabric Engine 9.1
	5720 Series	Fabric Engine 9.1
	7520 Series	Fabric Engine 9.1
	7720 Series	Fabric Engine 9.1
	VSP 4900 Series	VOSS 9.1
	VSP 7400 Series	VOSS 9.1

**Table 8: Application Telemetry product support**

Feature	Product	Release introduced
Application Telemetry	5320 Series	Fabric Engine 8.6
	5420 Series	VOSS 8.4
	5520 Series	VOSS 8.2.5
	5720 Series	Fabric Engine 8.7
	7520 Series	Fabric Engine 8.10
	7720 Series	Fabric Engine 8.10
	VSP 4900 Series	VOSS 8.1
	VSP 7400 Series	VOSS 8.0
Application Telemetry Host Monitoring	5320 Series	Fabric Engine 8.6
	5420 Series	VOSS 8.4
	5520 Series	VOSS 8.2.5
	5720 Series	Fabric Engine 8.7
	7520 Series	Fabric Engine 8.10
	7720 Series	Fabric Engine 8.10
	VSP 4900 Series	VOSS 8.1
	VSP 7400 Series	VOSS 8.0.5
Application Telemetry — using Segmented Management Instance VLAN interface as source IP	5320 Series	Fabric Engine 8.8
	5420 Series	Fabric Engine 8.8
	5520 Series	Fabric Engine 8.8
	5720 Series	Fabric Engine 8.8
	7520 Series	Fabric Engine 8.10
	7720 Series	Fabric Engine 8.10
	VSP 4900 Series	VOSS 8.8
	VSP 7400 Series	VOSS 8.8

**Table 8: Application Telemetry product support (continued)**

Feature	Product	Release introduced
Application Telemetry — using Segmented Management Instance CLIP interface (GRT and VRF) as source IP	5320 Series	Fabric Engine 8.8
	5420 Series	Fabric Engine 8.8
	5520 Series	Fabric Engine 8.8
	5720 Series	Fabric Engine 8.8
	7520 Series	Fabric Engine 8.10
	7720 Series	Fabric Engine 8.10
	VSP 4900 Series	VOSS 8.8
	VSP 7400 Series	VOSS 8.8

**Table 9: Authentication for Privileged EXEC Mode product support**

Feature	Product	Release introduced
Authentication for Privileged EXEC CLI Command Mode	5320 Series	Fabric Engine 8.6
	5420 Series	VOSS 8.4
	5520 Series	VOSS 8.4
	5720 Series	Fabric Engine 8.7
	7520 Series	Fabric Engine 8.10
	7720 Series	Fabric Engine 8.10
	VSP 4900 Series	VOSS 8.2
	VSP 7400 Series	VOSS 8.2

**Table 10: Auto-Negotiation product support**

Feature	Product	Release introduced
Auto-Negotiation	5320 Series	Fabric Engine 8.6
	5420 Series	VOSS 8.4 SFP-DD ports are only available if you disable Advanced Feature Bandwidth Reservation.
	5520 Series	VOSS 8.2.5 Not supported on 5520-24X or 5520-VIM-4X QSFP28 ports are only available if you disable Advanced Feature Bandwidth Reservation. 5520-48SE and 5520-VIM-4XE at 1 Gbps only



**Table 10: Auto-Negotiation product support (continued)**

Feature	Product	Release introduced
		5520-VIM-4YE at 25 Gbps only
	5720 Series	Fabric Engine 8.7
	7520 Series	Fabric Engine 8.10
	7720 Series	Fabric Engine 8.10
	VSP 4900 Series	VOSS 8.1 Not supported on: <ul style="list-style-type: none"> <li>• VIM5-2Q</li> <li>• VIM5-2Y</li> <li>• VIM5-4X</li> <li>• VIM5-4Y</li> </ul> VSP4900-12MXU-12XE - all fixed ports, with ports 13 to 24 at 1 Gbps only VSP4900-24S and VSP4900-48P - all fixed ports VSP4900-24XE - all fixed ports at 1 Gbps only VIM5-4XE at 1 Gbps only VIM5-4YE at 25 Gbps only
	VSP 7400 Series	VOSS 8.0

**Table 11: Auto-nickname for SPBM product support**

Feature	Product	Release introduced
Auto-nickname for SPBM	5320 Series	Fabric Engine 8.10
	5420 Series	Fabric Engine 8.10
	5520 Series	Fabric Engine 8.10
	5720 Series	Fabric Engine 8.10
	7520 Series	Fabric Engine 8.10
	7720 Series	Fabric Engine 8.10
	VSP 4900 Series	VOSS 8.10
	VSP 7400 Series	VOSS 8.10

**Table 12: Auto-sense product support**

Feature	Product	Release introduced
	5320 Series	Fabric Engine 8.6

**Table 12: Auto-sense product support (continued)**

Feature	Product	Release introduced
Auto-sense	5420 Series	VOSS 8.4
	5520 Series	VOSS 8.3
	5720 Series	Fabric Engine 8.7
	7520 Series	Fabric Engine 8.10
	7720 Series	Fabric Engine 8.10
	VSP 4900 Series	VOSS 8.3
	VSP 7400 Series	VOSS 8.3
Auto-sense can apply Fabric Attach (FA)-specific configuration	5320 Series	Fabric Engine 8.6
	5420 Series	VOSS 8.4.2
	5520 Series	VOSS 8.4.2
	5720 Series	Fabric Engine 8.7
	7520 Series	Fabric Engine 8.10
	7720 Series	Fabric Engine 8.10
	VSP 4900 Series	VOSS 8.4.2
Auto-sense can apply Fabric Extend-specific configuration	5320 Series	Fabric Engine 8.10.1
	5420 Series	Fabric Engine 8.10.1
	5520 Series	Fabric Engine 8.10.1
	5720 Series	Fabric Engine 8.10.1
	7520 Series	Fabric Engine 8.10.1
	7720 Series	Fabric Engine 8.10.1
	VSP 4900 Series	VOSS 8.10.1
	VSP 7400 Series	VOSS 8.10.1

**Table 12: Auto-sense product support (continued)**

Feature	Product	Release introduced
Auto-Sense MIB	5320 Series	Fabric Engine 8.6
	5420 Series	VOSS 8.5
	5520 Series	VOSS 8.5
	5720 Series	Fabric Engine 8.7
	7520 Series	Fabric Engine 8.10
	7720 Series	Fabric Engine 8.10
	VSP 4900 Series	VOSS 8.5
	VSP 7400 Series	VOSS 8.5

**Table 13: Automatic configuration of VIM speed**

Feature	Product	Release introduced
Auto-set vim-speed on 25G VIMs based on inserted transceiver type	5320 Series	Not Applicable
	5420 Series	Not Applicable
	5520 Series	Fabric Engine 8.9
	5720 Series	Fabric Engine 8.9
	7520 Series	Not Applicable
	7720 Series	Not Applicable
	VSP 4900 Series	VOSS 8.9
	VSP 7400 Series	Not Applicable

**Table 14: Bidirectional Forwarding Detection (BFD) product support**

Feature	Product	Release introduced
BFD (IPv4)	5320 Series	Fabric Engine 8.6
	5420 Series	VOSS 8.4
	5520 Series	VOSS 8.2.5
	5720 Series	Fabric Engine 8.7
	7520 Series	Fabric Engine 8.10
	7720 Series	Fabric Engine 8.10
	VSP 4900 Series	VOSS 8.1
	VSP 7400 Series	VOSS 8.1

**Table 14: Bidirectional Forwarding Detection (BFD) product support (continued)**

Feature	Product	Release introduced
BFD (IPv6)	5320 Series	Fabric Engine 8.6 demonstration feature
	5420 Series	VOSS 8.4 demonstration feature
	5520 Series	VOSS 8.2.5 demonstration feature
	5720 Series	Fabric Engine 8.7 demonstration feature
	7520 Series	Fabric Engine 8.10 demonstration feature
	7720 Series	Fabric Engine 8.10 demonstration feature
	VSP 4900 Series	VOSS 8.1 demonstration feature
	VSP 7400 Series	VOSS 8.1 demonstration feature
BFD over Fabric Extend Tunnels (IPv4)	5320 Series	Fabric Engine 8.6
	5420 Series	VOSS 8.4
	5520 Series	VOSS 8.2.5
	5720 Series	Fabric Engine 8.7
	7520 Series	Fabric Engine 8.10
	7720 Series	Fabric Engine 8.10
	VSP 4900 Series	VOSS 8.2
	VSP 7400 Series	VOSS 8.2

**Table 15: Border Gateway Protocol product support**

Feature	Product	Release introduced
Border Gateway Protocol for IPv4 (BGPv4)	5320 Series	Fabric Engine 8.6
	5420 Series	VOSS 8.4
	5520 Series	VOSS 8.2.5
	5720 Series	Fabric Engine 8.7
	7520 Series	Fabric Engine 8.10
	7720 Series	Fabric Engine 8.10
	VSP 4900 Series	VOSS 8.1
	VSP 7400 Series	VOSS 8.0

**Table 15: Border Gateway Protocol product support (continued)**

Feature	Product	Release introduced
BGP+ (BGPv4 for IPv6)	5320 Series	Fabric Engine 8.6
	5420 Series	VOSS 8.4
	5520 Series	VOSS 8.2.5
	5720 Series	Fabric Engine 8.7
	7520 Series	Fabric Engine 8.10
	7720 Series	Fabric Engine 8.10
	VSP 4900 Series	VOSS 8.1
	VSP 7400 Series	VOSS 8.0
BGPv6	5320 Series	Fabric Engine 8.6
	5420 Series	VOSS 8.4
	5520 Series	VOSS 8.2.5
	5720 Series	Fabric Engine 8.7
	7520 Series	Fabric Engine 8.10
	7720 Series	Fabric Engine 8.10
	VSP 4900 Series	VOSS 8.1
	VSP 7400 Series	VOSS 8.0
External BGP (eBGP)	5320 Series	Fabric Engine 8.6
	5420 Series	VOSS 8.4
	5520 Series	VOSS 8.2.5
	5720 Series	Fabric Engine 8.7
	7520 Series	Fabric Engine 8.10
	7720 Series	Fabric Engine 8.10
	VSP 4900 Series	VOSS 8.1
	VSP 7400 Series	VOSS 8.0
Internal BPG (iBGP)	5320 Series	Fabric Engine 8.6
	5420 Series	VOSS 8.4
	5520 Series	VOSS 8.2.5
	5720 Series	Fabric Engine 8.7
	7520 Series	Fabric Engine 8.10
	7720 Series	Fabric Engine 8.10
	VSP 4900 Series	VOSS 8.1
	VSP 7400 Series	VOSS 8.0

**Table 15: Border Gateway Protocol product support (continued)**

Feature	Product	Release introduced
Route metric for BGP route redistribution	5320 Series	Fabric Engine 8.6
	5420 Series	VOSS 8.4
	5520 Series	VOSS 8.2.5
	5720 Series	Fabric Engine 8.7
	7520 Series	Fabric Engine 8.10
	7720 Series	Fabric Engine 8.10
	VSP 4900 Series	VOSS 8.1
	VSP 7400 Series	VOSS 8.0
iBGP over user-created VRFs	5320 Series	Fabric Engine 8.6 Only 5320-48P-8XE and 5320-48T-8XE support more than one VRF with IP configuration.
	5420 Series	VOSS 8.4
	5520 Series	VOSS 8.2.5
	5720 Series	Fabric Engine 8.7
	7520 Series	Fabric Engine 8.10
	7720 Series	Fabric Engine 8.10
	VSP 4900 Series	VOSS 8.1
	VSP 7400 Series	VOSS 8.1

**Table 16: Bridge Protocol Data Unit (BPDU) Guard product support**

Feature	Product	Release introduced
Bridge Protocol Data Unit (BPDU) Guard	5320 Series	Fabric Engine 8.6
	5420 Series	VOSS 8.4
	5520 Series	VOSS 8.2.5
	5720 Series	Fabric Engine 8.7
	7520 Series	Fabric Engine 8.10
	7720 Series	Fabric Engine 8.10
	VSP 4900 Series	VOSS 8.1
	VSP 7400 Series	VOSS 8.0

**Table 17: Certificate order priority product support**

Feature	Product	Release introduced
	5320 Series	Fabric Engine 8.6

**Table 17: Certificate order priority product support (continued)**

Feature	Product	Release introduced
Certificate order priority	5420 Series	VOSS 8.4
	5520 Series	VOSS 8.2.5
	5720 Series	Fabric Engine 8.7
	7520 Series	Fabric Engine 8.10
	7720 Series	Fabric Engine 8.10
	VSP 4900 Series	VOSS 8.1
	VSP 7400 Series	VOSS 8.0

**Table 18: Channelization product support**

Feature	Product	Release introduced
Port Channelization	5320 Series	Not Applicable
	5420 Series	Not Applicable
	5520 Series	VOSS 8.2.5
	5720 Series	Fabric Engine 8.7
	7520 Series	Fabric Engine 8.10 Port 1/51 only
	7720 Series	Fabric Engine 8.10 All ports except 1/28
	VSP 4900 Series	VOSS 8.1 (4x10G only)
	VSP 7400 Series	VOSS 8.0 Supported on VSP 7432CQ
Port Auto-Channelization	5320 Series	Not Applicable
	5420 Series	Not Applicable
	5520 Series	Fabric Engine 8.9
	5720 Series	Fabric Engine 8.9
	7520 Series	Fabric Engine 8.10
	7720 Series	Fabric Engine 8.10
	VSP 4900 Series	VOSS 8.9 (4x10G only)
	VSP 7400 Series	VOSS 8.9 Supported on VSP 7432CQ

**Table 19: Client and Server product support**

Feature	Product	Release introduced
	5320 Series	Fabric Engine 8.6

**Table 19: Client and Server product support (continued)**

Feature	Product	Release introduced
File Transfer Protocol (FTP) server and client (IPv4)	5420 Series	VOSS 8.4
	5520 Series	VOSS 8.2.5
	5720 Series	Fabric Engine 8.7
	7520 Series	Fabric Engine 8.10
	7720 Series	Fabric Engine 8.10
	VSP 4900 Series	VOSS 8.1
	VSP 7400 Series	VOSS 8.0
File Transfer Protocol (FTP) server and client (IPv6)	5320 Series	Fabric Engine 8.6
	5420 Series	VOSS 8.4
	5520 Series	VOSS 8.2.5
	5720 Series	Fabric Engine 8.7
	7520 Series	Fabric Engine 8.10
	7720 Series	Fabric Engine 8.10
	VSP 4900 Series	VOSS 8.1
Hypertext Transfer Protocol (HTTP) and Hypertext Transfer Protocol Secure (HTTPS) (IPv4)	5320 Series	Fabric Engine 8.6
	5420 Series	VOSS 8.4
	5520 Series	VOSS 8.2.5
	5720 Series	Fabric Engine 8.7
	7520 Series	Fabric Engine 8.10
	7720 Series	Fabric Engine 8.10
	VSP 4900 Series	VOSS 8.1
Hypertext Transfer Protocol (HTTP) and Hypertext Transfer Protocol Secure (HTTPS) (IPv6)	5320 Series	Fabric Engine 8.6
	5420 Series	VOSS 8.4
	5520 Series	VOSS 8.2.5
	5720 Series	Fabric Engine 8.7
	7520 Series	Fabric Engine 8.10
	7720 Series	Fabric Engine 8.10
	VSP 4900 Series	VOSS 8.1
VSP 7400 Series	VOSS 8.0	



**Table 19: Client and Server product support (continued)**

Feature	Product	Release introduced
Secure Copy (SCP)  <b>Note:</b> The switch does not support the WinSCP client.	5320 Series	Fabric Engine 8.6
	5420 Series	VOSS 8.4
	5520 Series	VOSS 8.2.5
	5720 Series	Fabric Engine 8.7
	7520 Series	Fabric Engine 8.10
	7720 Series	Fabric Engine 8.10
	VSP 4900 Series	VOSS 8.1
	VSP 7400 Series	VOSS 8.0
Secure File Transfer Protocol (SFTP) server (IPv4)	5320 Series	Fabric Engine 8.6
	5420 Series	VOSS 8.4
	5520 Series	VOSS 8.2.5
	5720 Series	Fabric Engine 8.7
	7520 Series	Fabric Engine 8.10
	7720 Series	Fabric Engine 8.10
	VSP 4900 Series	VOSS 8.1
	VSP 7400 Series	VOSS 8.0
Secure File Transfer Protocol (SFTP) server (IPv6)	5320 Series	Fabric Engine 8.6
	5420 Series	VOSS 8.4
	5520 Series	VOSS 8.2.5
	5720 Series	Fabric Engine 8.7
	7520 Series	Fabric Engine 8.10
	7720 Series	Fabric Engine 8.10
	VSP 4900 Series	VOSS 8.1
	VSP 7400 Series	VOSS 8.0
Telnet server and client (IPv4)	5320 Series	Fabric Engine 8.6
	5420 Series	VOSS 8.4
	5520 Series	VOSS 8.2.5
	5720 Series	Fabric Engine 8.7
	7520 Series	Fabric Engine 8.10
	7720 Series	Fabric Engine 8.10
	VSP 4900 Series	VOSS 8.1
	VSP 7400 Series	VOSS 8.0

**Table 19: Client and Server product support (continued)**

Feature	Product	Release introduced
Telnet server and client (IPv6)	5320 Series	Fabric Engine 8.6
	5420 Series	VOSS 8.4
	5520 Series	VOSS 8.2.5
	5720 Series	Fabric Engine 8.7
	7520 Series	Fabric Engine 8.10
	7720 Series	Fabric Engine 8.10
	VSP 4900 Series	VOSS 8.1
	VSP 7400 Series	VOSS 8.0
Trivial File Transfer Protocol (TFTP) server and client (IPv4)	5320 Series	Fabric Engine 8.6
	5420 Series	VOSS 8.4
	5520 Series	VOSS 8.2.5
	5720 Series	Fabric Engine 8.7
	7520 Series	Fabric Engine 8.10
	7720 Series	Fabric Engine 8.10
	VSP 4900 Series	VOSS 8.1
	VSP 7400 Series	VOSS 8.0
TFTP server (IPv6)	5320 Series	Fabric Engine 8.6
	5420 Series	VOSS 8.4
	5520 Series	VOSS 8.2.5
	5720 Series	Fabric Engine 8.7
	7520 Series	Fabric Engine 8.10
	7720 Series	Fabric Engine 8.10
	VSP 4900 Series	VOSS 8.1
	VSP 7400 Series	VOSS 8.0

**Table 19: Client and Server product support (continued)**

Feature	Product	Release introduced
TFTP client (IPv6)	5320 Series	Fabric Engine 8.6
	5420 Series	VOSS 8.4
	5520 Series	VOSS 8.2.5
	5720 Series	Fabric Engine 8.7
	7520 Series	Fabric Engine 8.10
	7720 Series	Fabric Engine 8.10
	VSP 4900 Series	VOSS 8.1
	VSP 7400 Series	VOSS 8.0

**Table 20: Command Line Interface product support**

Feature	Product	Release introduced
Command Line Interface (CLI)	5320 Series	Fabric Engine 8.6
	5420 Series	VOSS 8.4
	5520 Series	VOSS 8.2.5
	5720 Series	Fabric Engine 8.7
	7520 Series	Fabric Engine 8.10
	7720 Series	Fabric Engine 8.10
	VSP 4900 Series	VOSS 8.1
	VSP 7400 Series	VOSS 8.0

**Table 21: Connectivity Fault Management product support**

Feature	Product	Release introduced
IEEE 802.1ag Connectivity Fault Management (CFM): <ul style="list-style-type: none"> <li>• Layer 2 Ping</li> <li>• TraceRoute</li> </ul>	5320 Series	Fabric Engine 8.6
	5420 Series	VOSS 8.4
	5520 Series	VOSS 8.2.5
	5720 Series	Fabric Engine 8.7

**Table 21: Connectivity Fault Management product support (continued)**

Feature	Product	Release introduced
• TraceTree	7520 Series	Fabric Engine 8.10
	7720 Series	Fabric Engine 8.10
	VSP 4900 Series	VOSS 8.1
	VSP 7400 Series	VOSS 8.0

**Table 22: Custom Logon Banner product support**

Feature	Product	Release introduced
Custom logon banner	5320 Series	Fabric Engine 8.6
	5420 Series	VOSS 8.4
	5520 Series	VOSS 8.2.5
	5720 Series	Fabric Engine 8.7
	7520 Series	Fabric Engine 8.10
	7720 Series	Fabric Engine 8.10
	VSP 4900 Series	VOSS 8.1
	VSP 7400 Series	VOSS 8.0



## Features D to F

**Table 23: Denial-of-service attack prevention product support**

Feature	Product	Release introduced
Directed Broadcast	5320 Series	Fabric Engine 8.6
	5420 Series	VOSS 8.4
	5520 Series	VOSS 8.2.5
	5720 Series	Fabric Engine 8.7
	7520 Series	Fabric Engine 8.10
	7720 Series	Fabric Engine 8.10
	VSP 4900 Series	VOSS 8.1
	VSP 7400 Series	VOSS 8.0
High Secure mode (hsecure boot configuration flag)	5320 Series	Fabric Engine 8.6
	5420 Series	VOSS 8.4
	5520 Series	VOSS 8.2.5
	5720 Series	Fabric Engine 8.7
	7520 Series	Fabric Engine 8.10
	7720 Series	Fabric Engine 8.10
	VSP 4900 Series	VOSS 8.1
	VSP 7400 Series	VOSS 8.0

**Table 24: DHCPv6 Guard product support**

Feature	Product	Release introduced
	5320 Series	Fabric Engine 8.6

**Table 24: DHCPv6 Guard product support (continued)**

Feature	Product	Release introduced
DHCPv6 Guard	5420 Series	VOSS 8.4
	5520 Series	VOSS 8.2.5
	5720 Series	Fabric Engine 8.7
	7520 Series	Fabric Engine 8.10
	7720 Series	Fabric Engine 8.10
	VSP 4900 Series	VOSS 8.1
	VSP 7400 Series	VOSS 8.0

**Table 25: Differentiated Services product support**

Feature	Product	Release introduced
Differentiated Services (DiffServ) including Per-Hop Behavior	5320 Series	Fabric Engine 8.6
	5420 Series	VOSS 8.4
	5520 Series	VOSS 8.2.5
	5720 Series	Fabric Engine 8.7
	7520 Series	Fabric Engine 8.10
	7720 Series	Fabric Engine 8.10
	VSP 4900 Series	VOSS 8.1
	VSP 7400 Series	VOSS 8.0

**Table 26: Digital Certificate/PKI product support**

Feature	Product	Release introduced
Digital Certificate/PKI	5320 Series	Fabric Engine 8.6
	5420 Series	VOSS 8.4
	5520 Series	VOSS 8.2.5
	5720 Series	Fabric Engine 8.7
	7520 Series	Fabric Engine 8.10
	7720 Series	Fabric Engine 8.10
	VSP 4900 Series	VOSS 8.1
	VSP 7400 Series	VOSS 8.0

**Table 26: Digital Certificate/PKI product support (continued)**

Feature	Product	Release introduced
Subject alternative name	5320 Series	Fabric Engine 8.6
	5420 Series	VOSS 8.4
	5520 Series	VOSS 8.2.5
	5720 Series	Fabric Engine 8.7
	7520 Series	Fabric Engine 8.10
	7720 Series	Fabric Engine 8.10
	VSP 4900 Series	VOSS 8.1
	VSP 7400 Series	VOSS 8.0.6
Certificate fingerprint validation	5320 Series	Fabric Engine 8.6
	5420 Series	VOSS 8.4
	5520 Series	VOSS 8.3
	5720 Series	Fabric Engine 8.7
	7520 Series	Fabric Engine 8.10
	7720 Series	Fabric Engine 8.10
	VSP 4900 Series	VOSS 8.3
	VSP 7400 Series	VOSS 8.3
Multiple CA Trustpoints and multiple Certificate Identities	5320 Series	Fabric Engine 8.6
	5420 Series	VOSS 8.5
	5520 Series	VOSS 8.3.100
	5720 Series	Fabric Engine 8.7
	7520 Series	Fabric Engine 8.10
	7720 Series	Fabric Engine 8.10
	VSP 4900 Series	VOSS 8.5
	VSP 7400 Series	VOSS 8.5

**Table 27: Digital Certificates for IPsec Authentication product support**

Feature	Product	Release introduced
Digital Certificates for IPsec Authentication	5320 Series	Not Supported
	5420 Series	Not Supported
	5520 Series	Not Supported
	5720 Series	Fabric Engine 8.7 Supported on 5720-24MXW and 5720-48MXW

**Table 27: Digital Certificates for IPsec Authentication product support (continued)**

Feature	Product	Release introduced
		For Fabric Extend over IPsec
	7520 Series	Fabric Engine 8.10 For Fabric Extend over IPsec
	7720 Series	Fabric Engine 8.10 For Fabric Extend over IPsec
	VSP 4900 Series	VOSS 8.3 Supported on VSP4900-12MXU-12XE and VSP4900-24XE For Fabric Extend over IPsec
	VSP 7400 Series	VOSS 8.3 For Fabric Extend over IPsec

**Table 28: Distributed Virtual Routing Controller product support**

Feature	Product	Release introduced
DvR Controller	5320 Series	Not Supported
	5420 Series	Not Supported
	5520 Series	VOSS 8.2.5
	5720 Series	Fabric Engine 8.7
	7520 Series	Fabric Engine 8.10
	7720 Series	Fabric Engine 8.10
	VSP 4900 Series	VOSS 8.1.5 Not supported on VSP4900-48P
	VSP 7400 Series	VOSS 8.0



**Table 28: Distributed Virtual Routing Controller product support (continued)**

Feature	Product	Release introduced
DvR Isolated Domain	5320 Series	Not Supported
	5420 Series	Not Supported
	5520 Series	Fabric Engine 8.8
	5720 Series	Fabric Engine 8.8
	7520 Series	Fabric Engine 8.10
	7720 Series	Fabric Engine 8.10
	VSP 4900 Series	VOSS 8.8 Not supported on VSP4900-48P
	VSP 7400 Series	VOSS 8.8
dvr-one-ip	5320 Series	Not Supported
	5420 Series	Not Supported
	5520 Series	VOSS 8.3
	5720 Series	Fabric Engine 8.7
	7520 Series	Fabric Engine 8.10
	7720 Series	Fabric Engine 8.10
	VSP 4900 Series	VOSS 8.3 Not supported on VSP4900-48P
	VSP 7400 Series	VOSS 8.3
Distributed Virtual Routing (DvR) In-band Management	5320 Series	Not Supported
	5420 Series	Not Supported
	5520 Series	Not Supported
	5720 Series	Fabric Engine 8.7
	7520 Series	Fabric Engine 8.10
	7720 Series	Fabric Engine 8.10
	VSP 4900 Series	VOSS 8.1 Not supported on VSP4900-48P
	VSP 7400 Series	VOSS 8.0

**Table 28: Distributed Virtual Routing Controller product support (continued)**

Feature	Product	Release introduced
<b>Important:</b> To use this functionality, you must upgrade the software on all DvR BEBs, including Leaf nodes, to at least the minimum software version to support this functionality.	5320 Series	Not Supported
	5420 Series	Not Supported
	5520 Series	Fabric Engine 8.8
	5720 Series	Fabric Engine 8.8
	7520 Series	Fabric Engine 8.10
	7720 Series	Fabric Engine 8.10
	VSP 4900 Series	VOSS 8.8 Not supported on VSP4900-48P
	VSP 7400 Series	VOSS 8.8

**Table 29: Distributed Virtual Routing Leaf product support**

Feature	Product	Release introduced
DvR Leaf	5320 Series	Fabric Engine 8.6 Supported on 5320-48P-8XE and 5320-48T-8XE
	5420 Series	VOSS 8.4
	5520 Series	VOSS 8.2.5
	5720 Series	Fabric Engine 8.7
	7520 Series	Fabric Engine 8.10
	7720 Series	Fabric Engine 8.10
	VSP 4900 Series	VOSS 8.1
	VSP 7400 Series	VOSS 8.0
DvR In-band Management	5320 Series	Fabric Engine 8.6 Supported on 5320-48P-8XE and 5320-48T-8XE
	5420 Series	VOSS 8.4
	5520 Series	VOSS 8.2.5
	5720 Series	Fabric Engine 8.7
	7520 Series	Fabric Engine 8.10
	7720 Series	Fabric Engine 8.10
	VSP 4900 Series	VOSS 8.1
	VSP 7400 Series	VOSS 8.0

**Table 29: Distributed Virtual Routing Leaf product support (continued)**

Feature	Product	Release introduced
Management I-SID Assignment to DvR Leaf	5320 Series	Fabric Engine 8.6 Supported on 5320-48P-8XE and 5320-48T-8XE
	5420 Series	VOSS 8.5
	5520 Series	VOSS 8.5
	5720 Series	Fabric Engine 8.7
	7520 Series	Fabric Engine 8.10
	7720 Series	Fabric Engine 8.10
	VSP 4900 Series	VOSS 8.5
	VSP 7400 Series	VOSS 8.5

**Table 30: Domain Name Service product support**

Feature	Product	Release introduced
Domain Name Service (DNS) client (IPv4)	5320 Series	Fabric Engine 8.6
	5420 Series	VOSS 8.4
	5520 Series	VOSS 8.2.5
	5720 Series	Fabric Engine 8.7
	7520 Series	Fabric Engine 8.10
	7720 Series	Fabric Engine 8.10
	VSP 4900 Series	VOSS 8.1
	VSP 7400 Series	VOSS 8.0
DNS client (IPv6)	5320 Series	Fabric Engine 8.6
	5420 Series	VOSS 8.4
	5520 Series	VOSS 8.2.5
	5720 Series	Fabric Engine 8.7
	7520 Series	Fabric Engine 8.10
	7720 Series	Fabric Engine 8.10
	VSP 4900 Series	VOSS 8.1
	VSP 7400 Series	VOSS 8.0

**Table 31: Dynamic ARP Inspection (DAI) product support**

Feature	Product	Release introduced
	5320 Series	Fabric Engine 8.6

**Table 31: Dynamic ARP Inspection (DAI) product support (continued)**

Feature	Product	Release introduced
Dynamic ARP Inspection (DAI)	5420 Series	VOSS 8.4
	5520 Series	VOSS 8.2.5
	5720 Series	Fabric Engine 8.7
	7520 Series	Fabric Engine 8.10
	7720 Series	Fabric Engine 8.10
	VSP 4900 Series	VOSS 8.1
	VSP 7400 Series	VOSS 8.0

**Table 32: Dynamic Host Configuration Protocol product support**

Feature	Product	Release introduced
Dynamic Host Configuration Protocol (DHCP) Server	5320 Series	Fabric Engine 9.0
	5420 Series	Fabric Engine 9.0
	5520 Series	Fabric Engine 9.0
	5720 Series	Fabric Engine 9.0
	7520 Series	Fabric Engine 9.0
	7720 Series	Fabric Engine 9.0
	VSP 4900 Series	VOSS 9.0
	VSP 7400 Series	VOSS 9.0
Option 43 (Vendor Specific) and Option 60 (Class Id)	5320 Series	Fabric Engine 9.0.2
	5420 Series	Fabric Engine 9.0.2
	5520 Series	Fabric Engine 9.0.2
	5720 Series	Fabric Engine 9.0.2
	7520 Series	Fabric Engine 9.0.2
	7720 Series	Fabric Engine 9.0.2
	VSP 4900 Series	VOSS 9.0.2
	VSP 7400 Series	VOSS 9.0.2
Dynamic Host Configuration Protocol (DHCP) Relay	5320 Series	Fabric Engine 8.6
	5420 Series	VOSS 8.4
	5520 Series	VOSS 8.2.5
	5720 Series	Fabric Engine 8.7
	7520 Series	Fabric Engine 8.10
	7720 Series	Fabric Engine 8.10
	VSP 4900 Series	VOSS 8.1
	VSP 7400 Series	VOSS 8.0

**Table 32: Dynamic Host Configuration Protocol product support (continued)**

Feature	Product	Release introduced
Option 82 (Relay Agent Information)	5320 Series	Fabric Engine 8.6
	5420 Series	VOSS 8.4
	5520 Series	VOSS 8.2.5
	5720 Series	Fabric Engine 8.7
	7520 Series	Fabric Engine 8.10
	7720 Series	Fabric Engine 8.10
	VSP 4900 Series	VOSS 8.1
	VSP 7400 Series	VOSS 8.0
DHCP Smart Relay	5320 Series	Fabric Engine 8.10
	5420 Series	Fabric Engine 8.10
	5520 Series	Fabric Engine 8.10
	5720 Series	Fabric Engine 8.10
	7520 Series	Fabric Engine 8.10
	7720 Series	Fabric Engine 8.10
	VSP 4900 Series	VOSS 8.10
	VSP 7400 Series	VOSS 8.10

**Table 33: Dynamic Host Configuration Protocol Relay for IPv6 product support**

Feature	Product	Release introduced
IPv6 DHCP Relay	5320 Series	Fabric Engine 8.6
	5420 Series	VOSS 8.4
	5520 Series	VOSS 8.2.5
	5720 Series	Fabric Engine 8.7
	7520 Series	Fabric Engine 8.10
	7720 Series	Fabric Engine 8.10
	VSP 4900 Series	VOSS 8.1
	VSP 7400 Series	VOSS 8.0

**Table 34: Dynamic Host Configuration Protocol Snooping and Neighbor Discovery Inspection product support**

Feature	Product	Release introduced
	5320 Series	Fabric Engine 8.6

**Table 34: Dynamic Host Configuration Protocol Snooping and Neighbor Discovery Inspection product support (continued)**

Feature	Product	Release introduced
DHCP Snooping(IPv4)	5420 Series	VOSS 8.4
	5520 Series	VOSS 8.2.5
	5720 Series	Fabric Engine 8.7
	7520 Series	Fabric Engine 8.10
	7720 Series	Fabric Engine 8.10
	VSP 4900 Series	VOSS 8.1
	VSP 7400 Series	VOSS 8.0
DHCP Snooping (IPv6)	5320 Series	Fabric Engine 8.6
	5420 Series	VOSS 8.4
	5520 Series	VOSS 8.2.5
	5720 Series	Fabric Engine 8.7
	7520 Series	Fabric Engine 8.10
	7720 Series	Fabric Engine 8.10
	VSP 4900 Series	VOSS 8.1
VSP 7400 Series	VOSS 8.0	
Neighbor Discovery Inspection (IPv6)	5320 Series	Fabric Engine 8.6
	5420 Series	VOSS 8.4
	5520 Series	VOSS 8.2.5
	5720 Series	Fabric Engine 8.7
	7520 Series	Fabric Engine 8.10
	7720 Series	Fabric Engine 8.10
	VSP 4900 Series	VOSS 8.1
VSP 7400 Series	VOSS 8.0	

**Table 35: Dynamic Nickname Assignment product support**

Feature	Product	Release introduced
	5320 Series	Fabric Engine 8.6

**Table 35: Dynamic Nickname Assignment product support (continued)**

Feature	Product	Release introduced
Dynamic Nickname Assignment	5420 Series	VOSS 8.4
	5520 Series	VOSS 8.2.5
	5720 Series	Fabric Engine 8.7
	7520 Series	Fabric Engine 8.10
	7720 Series	Fabric Engine 8.10
	VSP 4900 Series	VOSS 8.1
	VSP 7400 Series	VOSS 8.0.5
Extends the assignment behavior with a <i>prefix</i> parameter	5320 Series	Fabric Engine 8.6
	5420 Series	VOSS 8.4
	5520 Series	VOSS 8.3
	5720 Series	Fabric Engine 8.7
	7520 Series	Fabric Engine 8.10
	7720 Series	Fabric Engine 8.10
	VSP 4900 Series	VOSS 8.3
	VSP 7400 Series	VOSS 8.3

**Table 36: Egress Tunnel Shaping product support**

Feature	Product	Release introduced
Egress Shaper for Fabric Extend tunnels on Fabric IPsec Gateway virtual machine	5320 Series	Not Supported
	5420 Series	Not Supported
	5520 Series	Not Supported
	5720 Series	Fabric Engine 8.7 Supported on 5720-24MXW and 5720-48MXW
	7520 Series	Fabric Engine 8.10
	7720 Series	Fabric Engine 8.10
	VSP 4900 Series	VOSS 8.3.1 Supported on VSP4900-12MXU-12XE and VSP4900-24XE
	VSP 7400 Series	VOSS 8.3.1

**Table 37: Endpoint Tracking product support**

Feature	Product	Release introduced
	5320 Series	Not Supported

**Table 37: Endpoint Tracking product support (continued)**

Feature	Product	Release introduced
Endpoint Tracking	5420 Series	Not Supported
	5520 Series	VOSS 8.2.5
	5720 Series	Fabric Engine 8.7
	7520 Series	Fabric Engine 8.10
	7720 Series	Fabric Engine 8.10
	VSP 4900 Series	VOSS 8.7
	VSP 7400 Series	VOSS 8.1.1

**Table 38: Energy Efficient Ethernet product support**

Feature	Product	Release introduced
Energy Efficient Ethernet (EEE)	5320 Series	Fabric Engine 8.6
	5420 Series	VOSS 8.4 Supported on fixed ports only Not supported on 5420F-16W-32P-4XE or 5420F-24S-4XE
	5520 Series	VOSS 8.2.5 Supported on fixed ports only Not supported on 5520-24X or 5520-48SE
	5720 Series	Fabric Engine 8.7
	7520 Series	Fabric Engine 8.10 Supported on 7520-48XT-6C
	7720 Series	Not Supported
	VSP 4900 Series	VOSS 8.1 Supported on all fixed ports on VSP4900-48P and ports 1/1-1/12 on VSP4900-12MXU-12XE
	VSP 7400 Series	Not Supported

**Table 39: Energy Saver product support**

Feature	Product	Release introduced
Energy Saver	5320 Series	Fabric Engine 8.6
	5420 Series	VOSS 8.4



**Table 39: Energy Saver product support (continued)**

Feature	Product	Release introduced
		Not supported on 5420F-24S-4XE
	5520 Series	VOSS 8.2.5 Not supported on 5520-24X or 5520-48SE Supported on fixed ports only.
	5720 Series	Fabric Engine 8.7
	7520 Series	Fabric Engine 8.10 Supported on 7520-48XT-6C
	7720 Series	Not Supported
	VSP 4900 Series	VOSS 8.1 Supported on VSP4900-48P and ports 1/1 to 1/12 onVSP4900-12MXU-12XE
	VSP 7400 Series	Not Supported

**Table 40: Enhanced Secure Mode product support**

Feature	Product	Release introduced
Enhanced Secure mode	5320 Series	Fabric Engine 8.6
	5420 Series	VOSS 8.4
	5520 Series	VOSS 8.2.5
	5720 Series	Fabric Engine 8.7
	7520 Series	Fabric Engine 8.10
	7720 Series	Fabric Engine 8.10
	VSP 4900 Series	VOSS 8.1
	VSP 7400 Series	VOSS 8.0
Enhanced Secure mode for JITC and non-JITC sub-modes.	5320 Series	Fabric Engine 8.6
	5420 Series	VOSS 8.4
	5520 Series	VOSS 8.2.5
	5720 Series	Fabric Engine 8.7
	7520 Series	Fabric Engine 8.10
	7720 Series	Fabric Engine 8.10
	VSP 4900 Series	VOSS 8.1
	VSP 7400 Series	VOSS 8.0

**Table 40: Enhanced Secure Mode product support (continued)**

Feature	Product	Release introduced
Enhanced Secure mode - sensitive file protection	5320 Series	Fabric Engine 8.6
	5420 Series	VOSS 8.5
	5520 Series	VOSS 8.5
	5720 Series	Fabric Engine 8.7
	7520 Series	Fabric Engine 8.10
	7720 Series	Fabric Engine 8.10
	VSP 4900 Series	VOSS 8.5
	VSP 7400 Series	VOSS 8.5

**Table 41: Enterprise Device Manager product support**

Feature	Product	Release introduced
Enterprise Device Manager (EDM)	5320 Series	Fabric Engine 8.6
	5420 Series	VOSS 8.4
	5520 Series	VOSS 8.2.5
	5720 Series	Fabric Engine 8.7
	7520 Series	Fabric Engine 8.10
	7720 Series	Fabric Engine 8.10
	VSP 4900 Series	VOSS 8.1
	VSP 7400 Series	VOSS 8.0
Read-Only user for EDM	5320 Series	Fabric Engine 8.6
	5420 Series	VOSS 8.4
	5520 Series	VOSS 8.2.5
	5720 Series	Fabric Engine 8.7
	7520 Series	Fabric Engine 8.10
	7720 Series	Fabric Engine 8.10
	VSP 4900 Series	VOSS 8.1
	VSP 7400 Series	VOSS 8.0

**Table 42: Entity MIB product support**

Feature	Product	Release introduced
	5320 Series	Fabric Engine 8.6

**Table 42: Entity MIB product support (continued)**

Feature	Product	Release introduced
Entity MIB - Physical Table	5420 Series	VOSS 8.4
	5520 Series	VOSS 8.2.5
	5720 Series	Fabric Engine 8.7
	7520 Series	Fabric Engine 8.10
	7720 Series	Fabric Engine 8.10
	VSP 4900 Series	VOSS 8.1
	VSP 7400 Series	VOSS 8.0
Entity MIB enhancements and integration for the following: <ul style="list-style-type: none"> <li>• Physical Table</li> <li>• Alias Mapping Table</li> <li>• Physical Contains Table</li> <li>• Last Change Time object</li> </ul>	5320 Series	Fabric Engine 8.6
	5420 Series	VOSS 8.4
	5520 Series	VOSS 8.2.5
	5720 Series	Fabric Engine 8.7
	7520 Series	Fabric Engine 8.10
	7720 Series	Fabric Engine 8.10
	VSP 4900 Series	VOSS 8.1
Entity MIB - Logical Table includes the following logical interface entities: <ul style="list-style-type: none"> <li>• VLANs</li> <li>• MLTs</li> <li>• Circuitless IP (CLIP)</li> <li>• Fabric Extend interfaces (logical layer 2 and layer 3 IS-IS interfaces)</li> </ul>	5320 Series	Fabric Engine 8.6
	5420 Series	VOSS 8.4
	5520 Series	VOSS 8.4
	5720 Series	Fabric Engine 8.7
	7520 Series	Fabric Engine 8.10
	7720 Series	Fabric Engine 8.10
	VSP 4900 Series	VOSS 8.4
VSP 7400 Series	VOSS 8.4	

**Table 43: Equal Cost Multiple Path for IPv4 product support**

Feature	Product	Release introduced
Equal Cost Multiple Path (ECMP) for IPv4	5320 Series	Fabric Engine 8.6 Only 5320-48P-8XE and 5320-48T-8XE support

**Table 43: Equal Cost Multiple Path for IPv4 product support (continued)**

Feature	Product	Release introduced
		more than one VRF with IP configuration.
	5420 Series	VOSS 8.4
	5520 Series	VOSS 8.2.5
	5720 Series	Fabric Engine 8.7
	7520 Series	Fabric Engine 8.10
	7720 Series	Fabric Engine 8.10
	VSP 4900 Series	VOSS 8.1
	VSP 7400 Series	VOSS 8.0

**Table 44: Equal Cost Multiple Path for IPv6 product support**

Feature	Product	Release introduced
ECMP for IPv6	5320 Series	Fabric Engine 8.6 Only 5320-48P-8XE and 5320-48T-8XE support more than one VRF with IP configuration.
	5420 Series	VOSS 8.4
	5520 Series	VOSS 8.2.5
	5720 Series	Fabric Engine 8.7
	7520 Series	Fabric Engine 8.10
	7720 Series	Fabric Engine 8.10
	VSP 4900 Series	VOSS 8.1
	VSP 7400 Series	VOSS 8.0

**Table 45: ECMP Pathlist with Fabric Connect product support**

Feature	Product	Release introduced
ECMP Pathlist with Fabric Connect (IS-IS routes)	5320 Series	Fabric Engine 8.6
	5420 Series	VOSS 8.4
	5520 Series	VOSS 8.2.5
	5720 Series	Fabric Engine 8.7
	7520 Series	Fabric Engine 8.10
	7720 Series	Fabric Engine 8.10
	VSP 4900 Series	VOSS 8.1.5
	VSP 7400 Series	VOSS 8.1.5

**Table 45: ECMP Pathlist with Fabric Connect product support (continued)**

Feature	Product	Release introduced
ECMP support for Fabric Extend	5320 Series	Fabric Engine 8.6
	5420 Series	VOSS 8.4
	5520 Series	VOSS 8.2.5
	5720 Series	Fabric Engine 8.7
	7520 Series	Fabric Engine 8.10
	7720 Series	Fabric Engine 8.10
	VSP 4900 Series	Not Supported
	VSP 7400 Series	VOSS 8.0

**Table 46: E-Tree and Private VLANs product support**

Feature	Product	Release introduced
E-Tree and Private VLANs	5320 Series	Fabric Engine 8.6
	5420 Series	VOSS 8.4
	5520 Series	VOSS 8.2.5
	5720 Series	Fabric Engine 8.7
	7520 Series	Fabric Engine 8.10
	7720 Series	Fabric Engine 8.10
	VSP 4900 Series	VOSS 8.1
	VSP 7400 Series	VOSS 8.0
Routing on Private VLANs	5320 Series	Fabric Engine 8.6
	5420 Series	VOSS 8.5
	5520 Series	VOSS 8.5
	5720 Series	Fabric Engine 8.7
	7520 Series	Fabric Engine 8.10
	7720 Series	Fabric Engine 8.10
	VSP 4900 Series	VOSS 8.5
	VSP 7400 Series	VOSS 8.5

**Table 47: Extensible Authentication Protocol over LAN product support**

Feature	Product	Release introduced
	5320 Series	Fabric Engine 8.6
	5420 Series	VOSS 8.4

**Table 47: Extensible Authentication Protocol over LAN product support (continued)**

Feature	Product	Release introduced
Extensible Authentication Protocol (EAP) and EAP over LAN (EAPoL)	5520 Series	VOSS 8.2.5
	5720 Series	Fabric Engine 8.7
	7520 Series	Fabric Engine 8.10
	7720 Series	Fabric Engine 8.10
	VSP 4900 Series	VOSS 8.1
	VSP 7400 Series	VOSS 8.0
EAPoL MHMA-MV	5320 Series	Fabric Engine 8.6
	5420 Series	VOSS 8.4
	5520 Series	VOSS 8.2.5
	5720 Series	Fabric Engine 8.7
	7520 Series	Fabric Engine 8.10
	7720 Series	Fabric Engine 8.10
	VSP 4900 Series	VOSS 8.1
	VSP 7400 Series	VOSS 8.0
EAPoL enhancements: Enhanced MHMV, Fail Open VLAN, Guest VLAN	5320 Series	Fabric Engine 8.6
	5420 Series	VOSS 8.4
	5520 Series	VOSS 8.2.5
	5720 Series	Fabric Engine 8.7
	7520 Series	Fabric Engine 8.10
	7720 Series	Fabric Engine 8.10
	VSP 4900 Series	VOSS 8.1
	VSP 7400 Series	VOSS 8.0
EAP enhancements: EAP on Flex UNI ports, Auto-sense ports, auto-isid-offset	5320 Series	Fabric Engine 8.6
	5420 Series	VOSS 8.4
	5520 Series	VOSS 8.3
	5720 Series	Fabric Engine 8.7
	7520 Series	Fabric Engine 8.10
	7720 Series	Fabric Engine 8.10
	VSP 4900 Series	VOSS 8.3
	VSP 7400 Series	VOSS 8.3

**Table 47: Extensible Authentication Protocol over LAN product support (continued)**

Feature	Product	Release introduced
EAP enhancements: Wake on LAN, Guest I-SID, Fail Open I-SID	5320 Series	Fabric Engine 8.6
	5420 Series	VOSS 8.4
	5520 Series	VOSS 8.3
	5720 Series	Fabric Engine 8.7
	7520 Series	Fabric Engine 8.10
	7720 Series	Fabric Engine 8.10
	VSP 4900 Series	VOSS 8.3
	VSP 7400 Series	VOSS 8.3
Non EAPoL MAC RADIUS authentication	5320 Series	Fabric Engine 8.6
	5420 Series	VOSS 8.4
	5520 Series	VOSS 8.2.5
	5720 Series	Fabric Engine 8.7
	7520 Series	Fabric Engine 8.10
	7720 Series	Fabric Engine 8.10
	VSP 4900 Series	VOSS 8.1
	VSP 7400 Series	VOSS 8.0
QoS Priority Assignment	5320 Series	Fabric Engine 8.6
	5420 Series	VOSS 8.4
	5520 Series	VOSS 8.2.5
	5720 Series	Fabric Engine 8.7
	7520 Series	Fabric Engine 8.10
	7720 Series	Fabric Engine 8.10
	VSP 4900 Series	VOSS 8.1
	VSP 7400 Series	VOSS 8.0
RADIUS Dynamic User-Based Policies	5320 Series	Fabric Engine 8.6
	5420 Series	VOSS 8.4
	5520 Series	VOSS 8.3
	5720 Series	Fabric Engine 8.7
	7520 Series	Fabric Engine 8.10
	7720 Series	Fabric Engine 8.10
	VSP 4900 Series	VOSS 8.3
	VSP 7400 Series	VOSS 8.3

**Table 47: Extensible Authentication Protocol over LAN product support (continued)**

Feature	Product	Release introduced
RADIUS Port and VLAN based Attributes	5320 Series	Fabric Engine 8.6
	5420 Series	VOSS 8.4
	5520 Series	VOSS 8.4
	5720 Series	Fabric Engine 8.7
	7520 Series	Fabric Engine 8.10
	7720 Series	Fabric Engine 8.10
	VSP 4900 Series	VOSS 8.4
	VSP 7400 Series	VOSS 8.4
Continuity Mode for Fail Open VLAN and Fail Open I-SID	5320 Series	Fabric Engine 8.6
	5420 Series	Fabric Engine 8.6
	5520 Series	Fabric Engine 8.6
	5720 Series	Fabric Engine 8.7
	7520 Series	Fabric Engine 8.10
	7720 Series	Fabric Engine 8.10
	VSP 4900 Series	VOSS 8.6
	VSP 7400 Series	VOSS 8.6

**Table 48: Extreme Integrated Application Hosting product support**

Feature	Product	Release introduced
Extreme Integrated Application Hosting	5320 Series	Not Supported
	5420 Series	Not Supported
	5520 Series	Not Supported
	5720 Series	Fabric Engine 8.7 Supported on 5720-24MXW and 5720-48MXW
	7520 Series	Fabric Engine 8.10
	7720 Series	Fabric Engine 8.10
	VSP 4900 Series	VOSS 8.1.5 Supported on VSP4900-12MXU-12XE and VSP4900-24XE
	VSP 7400 Series	VOSS 8.0



**Table 48: Extreme Integrated Application Hosting product support (continued)**

Feature	Product	Release introduced
Fabric IPsec Gateway virtual machine	5320 Series	Not Supported
	5420 Series	Not Supported
	5520 Series	Not Supported
	5720 Series	Fabric Engine 8.7 Supported on 5720-24MXW and 5720-48MXW
	7520 Series	Fabric Engine 8.10
	7720 Series	Fabric Engine 8.10
	VSP 4900 Series	VOSS 8.3 Supported on VSP4900-12MXU-12XE and VSP4900-24XE
	VSP 7400 Series	VOSS 8.2

**Table 49: ExtremeCloud IQ Site Engine backup configuration ZIP file product support**

Feature	Product	Release introduced
ExtremeCloud IQ Site Engine backup configuration ZIP file For more information, see ExtremeCloud IQ Site Engine documentation.	5320 Series	Fabric Engine 8.6
	5420 Series	VOSS 8.4
	5520 Series	VOSS 8.2.5
	5720 Series	Fabric Engine 8.7
	7520 Series	Fabric Engine 8.10
	7720 Series	Fabric Engine 8.10
	VSP 4900 Series	VOSS 8.1
	VSP 7400 Series	VOSS 8.0

**Table 50: Fabric Attach product support**

Feature	Product	Release introduced
	5320 Series	Fabric Engine 8.6

**Table 50: Fabric Attach product support (continued)**

Feature	Product	Release introduced
Fabric Attach Server	5420 Series	VOSS 8.4
	5520 Series	VOSS 8.2.5
	5720 Series	Fabric Engine 8.7
	7520 Series	Fabric Engine 8.10
	7720 Series	Fabric Engine 8.10
	VSP 4900 Series	VOSS 8.1
	VSP 7400 Series	VOSS 8.0

**Table 51: Fabric Attach Ring with ISW-Series Managed Industrial Ethernet Switch product support**

Feature	Product	Release introduced
Fabric Attach Ring Topology Change Notification	5320 Series	Fabric Engine 9.0
	5420 Series	Fabric Engine 9.0
	5520 Series	Fabric Engine 9.0
	5720 Series	Fabric Engine 9.0
	7520 Series	Fabric Engine 9.0
	7720 Series	Fabric Engine 9.0
	VSP 4900 Series	VOSS 9.0
	VSP 7400 Series	VOSS 9.0

**Table 52: Fabric Attach Zero Touch Client Attachment product support**

Feature	Product	Release introduced
Fabric Attach Zero Touch Client Attachment	5320 Series	Fabric Engine 8.6
	5420 Series	VOSS 8.4
	5520 Series	VOSS 8.2.5
	5720 Series	Fabric Engine 8.7
	7520 Series	Fabric Engine 8.10
	7720 Series	Fabric Engine 8.10
	VSP 4900 Series	VOSS 8.1
	VSP 7400 Series	VOSS 8.0

**Table 53: Fabric Extend product support**

Feature	Product	Release introduced
	5320 Series	Fabric Engine 8.6

**Table 53: Fabric Extend product support (continued)**

Feature	Product	Release introduced
Fabric Extend	5420 Series	VOSS 8.4
	5520 Series	VOSS 8.2.5
	5720 Series	Fabric Engine 8.7
	7520 Series	Fabric Engine 8.10
	7720 Series	Fabric Engine 8.10
	VSP 4900 Series	VOSS 8.1
	VSP 7400 Series	VOSS 8.0
Fabric Extend over IPsec	5320 Series	Not Supported
	5420 Series	Not Supported
	5520 Series	Not Supported
	5720 Series	Fabric Engine 8.7 Supported on 5720-24MXW and 5720-48MXW Supported using Fabric IPsec Gateway
	7520 Series	Fabric Engine 8.10 Supported using Fabric IPsec Gateway
	7720 Series	Fabric Engine 8.10 Supported using Fabric IPsec Gateway
	VSP 4900 Series	VOSS 8.3 Supported on VSP4900-12MXU-12XE and VSP4900-24XE Supported using Fabric IPsec Gateway
	VSP 7400 Series	VOSS 8.2 Supported using Fabric IPsec Gateway

**Table 54: Fabric Extend - IPsec Compression product support**

Feature	Product	Release introduced
IPsec compression	5320 Series	Not Supported
	5420 Series	Not Supported
	5520 Series	Not Supported
	5720 Series	Fabric Engine 8.7 Supported on 5720-24MXW and 5720-48MXW

**Table 54: Fabric Extend - IPsec Compression product support (continued)**

Feature	Product	Release introduced
		Supported using Fabric IPsec Gateway
	7520 Series	Fabric Engine 8.10 Supported using Fabric IPsec Gateway
	7720 Series	Fabric Engine 8.10 Supported using Fabric IPsec Gateway
	VSP 4900 Series	VOSS 8.7 Supported on VSP4900-12MXU-12XE and VSP4900-24XE Supported using Fabric IPsec Gateway
	VSP 7400 Series	VOSS 8.7 Supported using Fabric IPsec Gateway

**Table 55: Fabric Extend - IPsec Fragmentation before Encryption product support**

Feature	Product	Release introduced
IPsec fragmentation before encryption	5320 Series	Not Supported
	5420 Series	Not Supported
	5520 Series	Not Supported
	5720 Series	Fabric Engine 8.7 Supported on 5720-24MXW and 5720-48MXW Supported using Fabric IPsec Gateway
	7520 Series	Fabric Engine 8.10 Supported using Fabric IPsec Gateway
	7720 Series	Fabric Engine 8.10 Supported using Fabric IPsec Gateway
	VSP 4900 Series	VOSS 8.3.1 Supported on VSP4900-12MXU-12XE and VSP4900-24XE Supported using Fabric IPsec Gateway
	VSP 7400 Series	VOSS 8.3.1

**Table 55: Fabric Extend - IPsec Fragmentation before Encryption product support (continued)**

Feature	Product	Release introduced
		Supported using Fabric IPsec Gateway

**Table 56: Fabric Extend - Parallel Tunnel product support**

Feature	Product	Release introduced
Parallel Tunnel Support for Fabric Extend	5320 Series	Fabric Engine 9.0
	5420 Series	Fabric Engine 9.0
	5520 Series	Fabric Engine 9.0
	5720 Series	Fabric Engine 9.0
	7520 Series	Fabric Engine 8.10
	7720 Series	Fabric Engine 8.10
	VSP 4900 Series	VOSS 8.8
	VSP 7400 Series	VOSS 8.8

**Table 57: Fabric Extend Tunnel IS-IS MTU Configuration product support**

Feature	Product	Release introduced
Fabric Extend Tunnel IS-IS MTU configuration	5320 Series	Fabric Engine 8.10.1
	5420 Series	Fabric Engine 8.10.1
	5520 Series	Fabric Engine 8.10.1
	5720 Series	Fabric Engine 8.10.1
	7520 Series	Fabric Engine 8.10.1
	7720 Series	Fabric Engine 8.10.1
	VSP 4900 Series	VOSS 8.10.1
	VSP 7400 Series	VOSS 8.10.1

**Table 58: Fabric Mode product support**

Feature	Product	Release introduced
	5320 Series	Fabric Engine 8.6

**Table 58: Fabric Mode product support (continued)**

Feature	Product	Release introduced
Fabric BCB mode	5420 Series	VOSS 8.4
	5520 Series	VOSS 8.2.5
	5720 Series	Fabric Engine 8.7
	7520 Series	Fabric Engine 8.10
	7720 Series	Fabric Engine 8.10
	VSP 4900 Series	VOSS 8.1
	VSP 7400 Series	VOSS 8.0
Fabric BEB mode	5320 Series	Fabric Engine 8.6
	5420 Series	VOSS 8.4
	5520 Series	VOSS 8.2.5
	5720 Series	Fabric Engine 8.7
	7520 Series	Fabric Engine 8.10
	7720 Series	Fabric Engine 8.10
	VSP 4900 Series	VOSS 8.1
	VSP 7400 Series	VOSS 8.0

**Table 59: Fabric RSPAN product support**

Feature	Product	Release introduced
Fabric RSPAN (Mirror to I-SID)	5320 Series	Fabric Engine 8.6
	5420 Series	VOSS 8.4
	5520 Series	VOSS 8.2.5
	5720 Series	Fabric Engine 8.7
	7520 Series	Fabric Engine 8.10
	7720 Series	Fabric Engine 8.10
	VSP 4900 Series	VOSS 8.1
	VSP 7400 Series	VOSS 8.0

**Table 60: FDB Protected by Port product support**

Feature	Product	Release introduced
	5320 Series	Fabric Engine 8.6
	5420 Series	VOSS 8.4

**Table 60: FDB Protected by Port product support (continued)**

Feature	Product	Release introduced
FDB protected by port (MAC security limit-learning)	5520 Series	VOSS 8.3
	5720 Series	Fabric Engine 8.7
	7520 Series	Not Supported
	7720 Series	Not Supported
	VSP 4900 Series	VOSS 8.3
	VSP 7400 Series	Not Supported

**Table 61: Flight Recorder product support**

Feature	Product	Release introduced
Flight Recorder for system monitoring	5320 Series	Fabric Engine 8.6
	5420 Series	VOSS 8.4
	5520 Series	VOSS 8.2.5
	5720 Series	Fabric Engine 8.7
	7520 Series	Fabric Engine 8.10
	7720 Series	Fabric Engine 8.10
	VSP 4900 Series	VOSS 8.1
	VSP 7400 Series	VOSS 8.0

**Table 62: Forward Error Correction product support**

Feature	Product	Release introduced
Forward Error Correction (FEC) (configurable)	5320 Series	Not applicable
	5420 Series	VOSS 8.4 Supported on: <ul style="list-style-type: none"> <li>• 5420M-16MW-32P-4YE</li> <li>• 5420M-24T-4YE</li> <li>• 5420M-24W-4YE</li> <li>• 5420M-48T-4YE</li> <li>• 5420M-48W-4YE</li> </ul>
	5520 Series	VOSS 8.2.5 Supported on 5520-VIM-4YE
	5720 Series	Fabric Engine 8.7
	7520 Series	Fabric Engine 8.10
	7720 Series	Fabric Engine 8.10
	VSP 4900 Series	VOSS 8.1

**Table 62: Forward Error Correction product support (continued)**

Feature	Product	Release introduced
		Supported on VIM5-4YE at 25 Gbps
	VSP 7400 Series	VOSS 8.0





## Features G to I

**Table 63: IEEE 802.3X Pause Frame Transmit product support**

Feature	Product	Release introduced
IEEE 802.3X Pause frame transmit	5320 Series	Fabric Engine 8.6
	5420 Series	VOSS 8.4
	5520 Series	VOSS 8.2.5
	5720 Series	Fabric Engine 8.7
	7520 Series	Fabric Engine 8.10
	7720 Series	Fabric Engine 8.10
	VSP 4900 Series	VOSS 8.1
	VSP 7400 Series	VOSS 8.0

**Table 64: Internet Control Message Protocol product support**

Feature	Product	Release introduced
Internet Control Message Protocol (ICMP)	5320 Series	Fabric Engine 8.6 Only 5320-48P-8XE and 5320-48T-8XE support more than one VRF with IP configuration.
	5420 Series	VOSS 8.4
	5520 Series	VOSS 8.2.5
	5720 Series	Fabric Engine 8.7
	7520 Series	Fabric Engine 8.10
	7720 Series	Fabric Engine 8.10
	VSP 4900 Series	VOSS 8.1
	VSP 7400 Series	VOSS 8.0

**Table 64: Internet Control Message Protocol product support (continued)**

Feature	Product	Release introduced
ICMP broadcast and multicast enable or disable	5320 Series	Fabric Engine 8.6 Only 5320-48P-8XE and 5320-48T-8XE support more than one VRF with IP configuration.
	5420 Series	VOSS 8.4
	5520 Series	VOSS 8.2.5
	5720 Series	Fabric Engine 8.7
	7520 Series	Fabric Engine 8.10
	7720 Series	Fabric Engine 8.10
	VSP 4900 Series	VOSS 8.1
	VSP 7400 Series	VOSS 8.0
Fragmented ICMP Packet Filtering for IPv4	5320 Series	Fabric Engine 8.6 Only 5320-48P-8XE and 5320-48T-8XE support more than one VRF with IP configuration.
	5420 Series	VOSS 8.5
	5520 Series	VOSS 8.5
	5720 Series	Fabric Engine 8.7
	7520 Series	Fabric Engine 8.10
	7720 Series	Fabric Engine 8.10
	VSP 4900 Series	VOSS 8.5
	VSP 7400 Series	VOSS 8.5

**Table 64: Internet Control Message Protocol product support (continued)**

Feature	Product	Release introduced
Fragmented ICMP Packet Filtering for IPv6	5320 Series	Fabric Engine 8.6 Only 5320-48P-8XE and 5320-48T-8XE support more than one VRF with IP configuration.
	5420 Series	VOSS 8.5
	5520 Series	VOSS 8.5
	5720 Series	Fabric Engine 8.7
	7520 Series	Fabric Engine 8.10
	7720 Series	Fabric Engine 8.10
	VSP 4900 Series	VOSS 8.5
	VSP 7400 Series	VOSS 8.5

**Table 65: Internet Group Management Protocol product support**

Feature	Product	Release introduced
Internet Group Management Protocol (IGMP), including virtualization	5320 Series	Fabric Engine 8.6
	5420 Series	VOSS 8.4
	5520 Series	VOSS 8.2.5
	5720 Series	Fabric Engine 8.7
	7520 Series	Fabric Engine 8.10
	7720 Series	Fabric Engine 8.10
	VSP 4900 Series	VOSS 8.1
	VSP 7400 Series	VOSS 8.0

**Table 66: Internet Key Exchange product support**

Feature	Product	Release introduced
	5320 Series	Fabric Engine 8.6

**Table 66: Internet Key Exchange product support (continued)**

Feature	Product	Release introduced
Internet Key Exchange (IKE) v2	5420 Series	VOSS 8.4
	5520 Series	VOSS 8.2.5
	5720 Series	Fabric Engine 8.7
	7520 Series	Fabric Engine 8.10
	7720 Series	Fabric Engine 8.10
	VSP 4900 Series	VOSS 8.1
	VSP 7400 Series	VOSS 8.0

**Table 67: Internet Protocol Flow Information eXport (IPFIX) product support**

Feature	Product	Release introduced
Internet Protocol Flow Information eXport (IPFIX)	5320 Series	Fabric Engine 8.6 Supported on 5320-48P-8XE and 5320-48T-8XE
	5420 Series	VOSS 8.4
	5520 Series	VOSS 8.2.5
	5720 Series	Fabric Engine 8.7
	7520 Series	Fabric Engine 8.10
	7720 Series	Fabric Engine 8.10
	VSP 4900 Series	Not Supported
	VSP 7400 Series	VOSS 8.0
IPFIX — using Segmented Management Instance VLAN as source IP	5320 Series	Fabric Engine 8.8
	5420 Series	Fabric Engine 8.8
	5520 Series	Fabric Engine 8.8
	5720 Series	Fabric Engine 8.8
	7520 Series	Fabric Engine 8.10
	7720 Series	Fabric Engine 8.10
	VSP 4900 Series	Not Supported
	VSP 7400 Series	VOSS 8.8

**Table 67: Internet Protocol Flow Information eXport (IPFIX) product support (continued)**

Feature	Product	Release introduced
IPFIX — using Segmented Management Instance CLIP (GRT and VRF) as source IP	5320 Series	Fabric Engine 8.8
	5420 Series	Fabric Engine 8.8
	5520 Series	Fabric Engine 8.8
	5720 Series	Fabric Engine 8.8
	7520 Series	Fabric Engine 8.10
	7720 Series	Fabric Engine 8.10
	VSP 4900 Series	Not Supported
	VSP 7400 Series	VOSS 8.8

**Table 68: Inter-VSN Routing product support**

Feature	Product	Release introduced
Inter-VSN routing (IPv4)	5320 Series	Fabric Engine 8.6
	5420 Series	VOSS 8.4
	5520 Series	VOSS 8.2.5
	5720 Series	Fabric Engine 8.7
	7520 Series	Fabric Engine 8.10
	7720 Series	Fabric Engine 8.10
	VSP 4900 Series	VOSS 8.1
	VSP 7400 Series	VOSS 8.0
Inter-VSN routing (IPv6)	5320 Series	Fabric Engine 8.6
	5420 Series	VOSS 8.4
	5520 Series	VOSS 8.2.5
	5720 Series	Fabric Engine 8.7
	7520 Series	Fabric Engine 8.10
	7720 Series	Fabric Engine 8.10
	VSP 4900 Series	VOSS 8.1
	VSP 7400 Series	VOSS 8.0

**Table 69: IP Phone product support**

Feature	Product	Release introduced
	5320 Series	Fabric Engine 8.6

**Table 69: IP Phone product support (continued)**

Feature	Product	Release introduced
IP Phone Support	5420 Series	VOSS 8.4
	5520 Series	VOSS 8.3
	5720 Series	Fabric Engine 8.7
	7520 Series	Fabric Engine 8.10
	7720 Series	Fabric Engine 8.10
	VSP 4900 Series	VOSS 8.3
	VSP 7400 Series	VOSS 8.3

**Table 70: IP Multicast over Fabric Connect product support**

Feature	Product	Release introduced
IP Multicast over Fabric Connect	5320 Series	Fabric Engine 8.6 Only 5320-48P-8XE and 5320-48T-8XE support more than one VRF with IP configuration.
	5420 Series	VOSS 8.4
	5520 Series	VOSS 8.2.5
	5720 Series	Fabric Engine 8.7
	7520 Series	Fabric Engine 8.10
	7720 Series	Fabric Engine 8.10
	VSP 4900 Series	VOSS 8.1
	VSP 7400 Series	VOSS 8.0
IP Multicast config-lite for Fabric Connect  <b>Note:</b> There is no limit on VRF membership.	5320 Series	Fabric Engine 8.8
	5420 Series	Fabric Engine 8.8
	5520 Series	Fabric Engine 8.8
	5720 Series	Fabric Engine 8.8
	7520 Series	Fabric Engine 8.10
	7720 Series	Fabric Engine 8.10
	VSP 4900 Series	VOSS 8.8
	VSP 7400 Series	VOSS 8.8

**Table 70: IP Multicast over Fabric Connect product support (continued)**

Feature	Product	Release introduced
IP SPB Multicast Policy	5320 Series	Fabric Engine 8.8
	5420 Series	Fabric Engine 8.8
	5520 Series	Fabric Engine 8.8
	5720 Series	Fabric Engine 8.8
	7520 Series	Fabric Engine 8.10
	7720 Series	Fabric Engine 8.10
	VSP 4900 Series	VOSS 8.8
	VSP 7400 Series	VOSS 8.8
Universal Plug and Play (uPnP) Filtering	5320 Series	Fabric Engine 8.6
	5420 Series	VOSS 8.4
	5520 Series	VOSS 8.3
	5720 Series	Fabric Engine 8.7
	7520 Series	Fabric Engine 8.10
	7720 Series	Fabric Engine 8.10
	VSP 4900 Series	VOSS 8.3
	VSP 7400 Series	VOSS 8.3

**Table 71: IP Route Policies product support**

Feature	Product	Release introduced
IP route policies	5320 Series	Fabric Engine 8.6
	5420 Series	VOSS 8.4
	5520 Series	VOSS 8.2.5
	5720 Series	Fabric Engine 8.7
	7520 Series	Fabric Engine 8.10
	7720 Series	Fabric Engine 8.10
	VSP 4900 Series	VOSS 8.1
	VSP 7400 Series	VOSS 8.0

**Table 72: IP Shortcuts product support**

Feature	Product	Release introduced
IP Shortcut routing including ECMP	5320 Series	Fabric Engine 8.6 Only 5320-48P-8XE and 5320-48T-8XE support

**Table 72: IP Shortcuts product support (continued)**

Feature	Product	Release introduced
		more than one VRF with IP configuration.
	5420 Series	VOSS 8.4
	5520 Series	VOSS 8.2.5
	5720 Series	Fabric Engine 8.7
	7520 Series	Fabric Engine 8.10
	7720 Series	Fabric Engine 8.10
	VSP 4900 Series	VOSS 8.1
	VSP 7400 Series	VOSS 8.0
IPv6 Shortcut routing	5320 Series	Fabric Engine 8.6 Only 5320-48P-8XE and 5320-48T-8XE support more than one VRF with IP configuration.
	5420 Series	VOSS 8.4
	5520 Series	VOSS 8.2.5
	5720 Series	Fabric Engine 8.7
	7520 Series	Fabric Engine 8.10
	7720 Series	Fabric Engine 8.10
	VSP 4900 Series	VOSS 8.1
VSP 7400 Series	VOSS 8.0	
IPv4 IS-IS accept policies	5320 Series	Fabric Engine 8.6 Only 5320-48P-8XE and 5320-48T-8XE support more than one VRF with IP configuration.
	5420 Series	VOSS 8.4
	5520 Series	VOSS 8.2.5
	5720 Series	Fabric Engine 8.7
	7520 Series	Fabric Engine 8.10
	7720 Series	Fabric Engine 8.10
	VSP 4900 Series	VOSS 8.1
VSP 7400 Series	VOSS 8.0	



**Table 72: IP Shortcuts product support (continued)**

Feature	Product	Release introduced
IPv6 IS-IS accept policies	5320 Series	Fabric Engine 8.6 Only 5320-48P-8XE and 5320-48T-8XE support more than one VRF with IP configuration.
	5420 Series	VOSS 8.4
	5520 Series	VOSS 8.2.5
	5720 Series	Fabric Engine 8.7
	7520 Series	Fabric Engine 8.10
	7720 Series	Fabric Engine 8.10
	VSP 4900 Series	VOSS 8.1
	VSP 7400 Series	VOSS 8.0

**Table 73: IP Source Guard product support**

Feature	Product	Release introduced
IP Source Guard (IPv4)	5320 Series	Fabric Engine 8.6
	5420 Series	VOSS 8.4
	5520 Series	VOSS 8.2.5
	5720 Series	Fabric Engine 8.7
	7520 Series	Fabric Engine 8.10
	7720 Series	Fabric Engine 8.10
	VSP 4900 Series	VOSS 8.1
	VSP 7400 Series	VOSS 8.0
IP Source Guard (IPv6)	5320 Series	Fabric Engine 8.6
	5420 Series	VOSS 8.4
	5520 Series	VOSS 8.2.5
	5720 Series	Fabric Engine 8.7
	7520 Series	Fabric Engine 8.10
	7720 Series	Fabric Engine 8.10
	VSP 4900 Series	VOSS 8.1
	VSP 7400 Series	VOSS 8.0

**Table 74: IP Source Routing product support**

Feature	Product	Release introduced
	5320 Series	Fabric Engine 8.6

**Table 74: IP Source Routing product support (continued)**

Feature	Product	Release introduced
IP Source Routing enable or disable		Only 5320-48P-8XE and 5320-48T-8XE support more than one VRF with IP configuration.
	5420 Series	VOSS 8.4
	5520 Series	VOSS 8.2.5
	5720 Series	Fabric Engine 8.7
	7520 Series	Fabric Engine 8.10
	7720 Series	Fabric Engine 8.10
	VSP 4900 Series	VOSS 8.1
	VSP 7400 Series	VOSS 8.0

**Table 75: IPsec product support**

Feature	Product	Release introduced
IPsec transport mode	5320 Series	Fabric Engine 8.6
	5420 Series	VOSS 8.4
	5520 Series	VOSS 8.2.5
	5720 Series	Fabric Engine 8.7
	7520 Series	Fabric Engine 8.10
	7720 Series	Fabric Engine 8.10
	VSP 4900 Series	VOSS 8.1
	VSP 7400 Series	VOSS 8.0

**Table 76: IPsec NAT-T product support**

Feature	Product	Release introduced
IPsec NAT-T	5320 Series	Not Supported
	5420 Series	Not Supported
	5520 Series	Not Supported
	5720 Series	Fabric Engine 8.7 Supported on 5720-24MXW and 5720-48MXW Supported using Fabric IPsec Gateway
	7520 Series	Fabric Engine 8.10

**Table 76: IPsec NAT-T product support (continued)**

Feature	Product	Release introduced
		Supported using Fabric IPsec Gateway
	7720 Series	Fabric Engine 8.10 Supported using Fabric IPsec Gateway
	VSP 4900 Series	VOSS 8.3 Supported on VSP4900-12MXU-12XE and VSP4900-24XE Supported using Fabric IPsec Gateway
	VSP 7400 Series	VOSS 8.2 Supported using Fabric IPsec Gateway

**Table 77: IPv4 Interface state product support**

Feature	Product	Release introduced
Ability to Enable or Disable an IP Interface	5320 Series	Fabric Engine 8.10
	5420 Series	Fabric Engine 8.10
	5520 Series	Fabric Engine 8.10
	5720 Series	Fabric Engine 8.10
	7520 Series	Fabric Engine 8.10
	7720 Series	Fabric Engine 8.10
	VSP 4900 Series	VOSS 8.10
	VSP 7400 Series	VOSS 8.10

**Table 78: IPv6-in-IPv4 tunnels product support**

Feature	Product	Release introduced
	5320 Series	Fabric Engine 8.6

**Table 78: IPv6-in-IPv4 tunnels product support (continued)**

Feature	Product	Release introduced
IPv6-in-IPv4 tunnels	5420 Series	VOSS 8.4
	5520 Series	VOSS 8.2.5
	5720 Series	Fabric Engine 8.7
	7520 Series	Fabric Engine 8.10
	7720 Series	Fabric Engine 8.10
	VSP 4900 Series	VOSS 8.1
	VSP 7400 Series	VOSS 8.0

**Table 79: IPv6 Router Advertisement (RA) Guard product support**

Feature	Product	Release introduced
IPv6 Router Advertisement (RA) Guard	5320 Series	Fabric Engine 8.6
	5420 Series	VOSS 8.4
	5520 Series	VOSS 8.2.5
	5720 Series	Fabric Engine 8.7
	7520 Series	Fabric Engine 8.10
	7720 Series	Fabric Engine 8.10
	VSP 4900 Series	VOSS 8.1
	VSP 7400 Series	VOSS 8.0

**Table 80: IQ Agent product support**

Feature	Product	Release introduced	
ExtremeCloud IQ Agent	5320 Series	Fabric Engine 8.6	
	5420 Series	VOSS 8.4	
	5520 Series	VOSS 8.2.5	
	5720 Series	Fabric Engine 8.7	
	7520 Series	Fabric Engine 8.10	
	7720 Series	Fabric Engine 8.10	
	VSP 4900 Series		VOSS 8.2
			Supported on: <ul style="list-style-type: none"> <li>• VSP4900-48P</li> <li>• VIM5-4YE</li> <li>• VIM5-4X</li> <li>• VIM5-4XE</li> <li>• VIM5-2Y</li> </ul>
		VOSS 8.2.5	

**Table 80: IQ Agent product support (continued)**

Feature	Product	Release introduced
		Supported on: <ul style="list-style-type: none"> <li>• VSP4900-24S</li> <li>• VSP4900-24XE</li> <li>• VSP4900-12MXU-12XE</li> <li>• VIM5-2Q</li> <li>• VIM5-4Y</li> </ul>
	VSP 7400 Series	VOSS 8.2
Unified Metrics and Events Reporting	5320 Series	Fabric Engine 8.8
	5420 Series	Fabric Engine 8.8
	5520 Series	Fabric Engine 8.8
	5720 Series	Fabric Engine 8.8
	7520 Series	Fabric Engine 8.10
	7720 Series	Fabric Engine 8.10
	VSP 4900 Series	Not Supported
	VSP 7400 Series	Not Supported

**Table 81: IS-IS product support**

Feature	Product	Release introduced
IS-IS authentication with SHA-256	5320 Series	Fabric Engine 8.6
	5420 Series	VOSS 8.4
	5520 Series	VOSS 8.2.5
	5720 Series	Fabric Engine 8.7
	7520 Series	Fabric Engine 8.10
	7720 Series	Fabric Engine 8.10
	VSP 4900 Series	VOSS 8.1
	VSP 7400 Series	VOSS 8.0
Suspend duplicate system ID detection	5320 Series	Fabric Engine 8.6
	5420 Series	VOSS 8.4
	5520 Series	VOSS 8.2.5
	5720 Series	Fabric Engine 8.7
	7520 Series	Fabric Engine 8.10
	7720 Series	Fabric Engine 8.10
	VSP 4900 Series	VOSS 8.1
	VSP 7400 Series	VOSS 8.0

**Table 81: IS-IS product support (continued)**

Feature	Product	Release introduced
Multiple IS-IS parallel adjacencies	5320 Series	Fabric Engine 8.6
	5420 Series	VOSS 8.4
	5520 Series	VOSS 8.2.5
	5720 Series	Fabric Engine 8.7
	7520 Series	Fabric Engine 8.10
	7720 Series	Fabric Engine 8.10
	VSP 4900 Series	VOSS 8.1
	VSP 7400 Series	VOSS 8.0
IS-IS tags for external routes (BGP and OSPF)	5320 Series	Fabric Engine 9.1
	5420 Series	Fabric Engine 9.1
	5520 Series	Fabric Engine 9.1
	5720 Series	Fabric Engine 9.1
	7520 Series	Fabric Engine 9.1
	7720 Series	Fabric Engine 9.1
	VSP 4900 Series	VOSS 9.1
	VSP 7400 Series	VOSS 9.1

**Table 82: IS-IS Hello Padding**

Feature	Product	Release introduced
IS-IS hello padding (ability to disable)	5320 Series	Fabric Engine 8.6
	5420 Series	VOSS 8.4.2
	5520 Series	VOSS 8.2.7
	5720 Series	Fabric Engine 8.7
	7520 Series	Fabric Engine 8.10
	7720 Series	Fabric Engine 8.10
	VSP 4900 Series	VOSS 8.2.7
	VSP 7400 Series	VOSS 8.2.7



## Features J to L

**Table 83: Key Health Indicator product support**

Feature	Product	Release introduced
Key Health Indicator (KHI)	5320 Series	Fabric Engine 8.6
	5420 Series	VOSS 8.4
	5520 Series	VOSS 8.2.5
	5720 Series	Fabric Engine 8.7
	7520 Series	Fabric Engine 8.10
	7720 Series	Fabric Engine 8.10
	VSP 4900 Series	VOSS 8.1
	VSP 7400 Series	VOSS 8.0

**Table 84: Layer 2 Video Surveillance install script product support**

Feature	Product	Release introduced
Layer 2 Video Surveillance install script	5320 Series	Not Supported
	5420 Series	Not Supported
	5520 Series	Not Supported
	5720 Series	Not Supported
	7520 Series	Not Supported
	7720 Series	Not Supported
	VSP 4900 Series	VOSS 8.1 To support this feature, VIM installation is mandatory in VSP4900-48P.
	VSP 7400 Series	Not Supported

**Table 85: Layer 2 VSN product support**

Feature	Product	Release introduced
	5320 Series	Fabric Engine 8.6

**Table 85: Layer 2 VSN product support (continued)**

Feature	Product	Release introduced
Equal Cost Trees (ECT)	5420 Series	VOSS 8.4
	5520 Series	VOSS 8.2.5
	5720 Series	Fabric Engine 8.7
	7520 Series	Fabric Engine 8.10
	7720 Series	Fabric Engine 8.10
	VSP 4900 Series	VOSS 8.1
	VSP 7400 Series	VOSS 8.0
Layer 2 Virtual Service Network (VSN)	5320 Series	Fabric Engine 8.6
	5420 Series	VOSS 8.4
	5520 Series	VOSS 8.2.5
	5720 Series	Fabric Engine 8.7
	7520 Series	Fabric Engine 8.10
	7720 Series	Fabric Engine 8.10
	VSP 4900 Series	VOSS 8.1
VSP 7400 Series	VOSS 8.0	
Switched UNI	5320 Series	Fabric Engine 8.6
	5420 Series	VOSS 8.4
	5520 Series	VOSS 8.2.5
	5720 Series	Fabric Engine 8.7
	7520 Series	Fabric Engine 8.10
	7720 Series	Fabric Engine 8.10
	VSP 4900 Series	VOSS 8.1
VSP 7400 Series	VOSS 8.0	



**Table 85: Layer 2 VSN product support (continued)**

Feature	Product	Release introduced
Transparent Port UNI (T-UNI)	5320 Series	Fabric Engine 8.6
	5420 Series	VOSS 8.4
	5520 Series	VOSS 8.2.5
	5720 Series	Fabric Engine 8.7
	7520 Series	Fabric Engine 8.10
	7720 Series	Fabric Engine 8.10
	VSP 4900 Series	VOSS 8.1
	VSP 7400 Series	VOSS 8.0

**Table 86: Layer 3 Video Surveillance install script product support**

Feature	Product	Release introduced
Layer 3 Video Surveillance install script (formerly known as the run vms endura script)	5320 Series	Not Supported
	5420 Series	Not Supported
	5520 Series	Not Supported
	5720 Series	Not Supported
	7520 Series	Not Supported
	7720 Series	Not Supported
	VSP 4900 Series	VOSS 8.1 To support this feature, VIM installation is mandatory in VSP4900-48P.
	VSP 7400 Series	Not Supported

**Table 87: Layer 3 VSN product support**

Feature	Product	Release introduced
Layer 3 VSN	5320 Series	Fabric Engine 8.6 Only 5320-48P-8XE and 5320-48T-8XE support

**Table 87: Layer 3 VSN product support (continued)**

Feature	Product	Release introduced
		more than one VRF with IP configuration.
	5420 Series	VOSS 8.4
	5520 Series	VOSS 8.2.5
	5720 Series	Fabric Engine 8.7
	7520 Series	Fabric Engine 8.10
	7720 Series	Fabric Engine 8.10
	VSP 4900 Series	VOSS 8.1
	VSP 7400 Series	VOSS 8.0

**Table 88: Licensing product support**

Feature	Product	Release introduced
Universal Hardware licenses	5320 Series	Fabric Engine 8.6
	5420 Series	VOSS 8.4
	5520 Series	VOSS 8.2.5
	5720 Series	Fabric Engine 8.7
	7520 Series	Fabric Engine 8.10
	7720 Series	Fabric Engine 8.10
	VSP 4900 Series	Not Applicable
	VSP 7400 Series	Not Applicable
License files signed using Extreme Networks signature.	5320 Series	Fabric Engine 8.6
	5420 Series	VOSS 8.4
	5520 Series	VOSS 8.2.5
	5720 Series	Fabric Engine 8.7
	7520 Series	Fabric Engine 8.10
	7720 Series	Fabric Engine 8.10
	VSP 4900 Series	VOSS 8.1
	VSP 7400 Series	VOSS 8.0

**Table 88: Licensing product support (continued)**

Feature	Product	Release introduced
Ability to extend the Factory Default Premier Trial License	5320 Series	Fabric Engine 8.6
	5420 Series	VOSS 8.4
	5520 Series	VOSS 8.4
	5720 Series	Fabric Engine 8.7
	7520 Series	Fabric Engine 8.10
	7720 Series	Fabric Engine 8.10
	VSP 4900 Series	VOSS 8.4
	VSP 7400 Series	VOSS 8.4

**Table 89: Link Debounce for WAN Links**

Feature	Product	Release introduced
Link Debounce	5320 Series	Fabric Engine 8.6
	5420 Series	VOSS 8.5
	5520 Series	VOSS 8.5
	5720 Series	Fabric Engine 8.7
	7520 Series	Fabric Engine 8.10
	7720 Series	Fabric Engine 8.10
	VSP 4900 Series	VOSS 8.4.2
	VSP 7400 Series	VOSS 8.4.2

**Table 90: Link Layer Discovery Protocol product support**

Feature	Product	Release introduced
Industry Standard Discovery Protocol (ISDP) (CDP compatible)	5320 Series	Fabric Engine 8.6
	5420 Series	VOSS 8.4
	5520 Series	VOSS 8.2.5
	5720 Series	Fabric Engine 8.7
	7520 Series	Fabric Engine 8.10
	7720 Series	Fabric Engine 8.10
	VSP 4900 Series	VOSS 8.1
	VSP 7400 Series	VOSS 8.0

**Table 90: Link Layer Discovery Protocol product support (continued)**

Feature	Product	Release introduced
Link Layer Discovery Protocol (LLDP)	5320 Series	Fabric Engine 8.6
	5420 Series	VOSS 8.4
	5520 Series	VOSS 8.2.5
	5720 Series	Fabric Engine 8.7
	7520 Series	Fabric Engine 8.10
	7720 Series	Fabric Engine 8.10
	VSP 4900 Series	VOSS 8.1
	VSP 7400 Series	VOSS 8.0
Link Layer Discovery Protocol-Media Endpoint Discovery (LLDP-MED)	5320 Series	Fabric Engine 8.6
	5420 Series	VOSS 8.4
	5520 Series	VOSS 8.2.5
	5720 Series	Fabric Engine 8.7
	7520 Series	Fabric Engine 8.10
	7720 Series	Fabric Engine 8.10
	VSP 4900 Series	VOSS 8.1
	VSP 7400 Series	VOSS 8.0

**Table 91: Link-state tracking (LST) product support**

Feature	Product	Release introduced
Link-state tracking (LST)	5320 Series	Fabric Engine 8.6
	5420 Series	VOSS 8.4
	5520 Series	VOSS 8.2.5
	5720 Series	Fabric Engine 8.7
	7520 Series	Fabric Engine 8.10
	7720 Series	Fabric Engine 8.10
	VSP 4900 Series	VOSS 8.1
	VSP 7400 Series	VOSS 8.0

**Table 92: Linux kernel version product support**

Feature	Product	Release introduced
	5320 Series	5.10 as of Fabric Engine 9.1

**Table 92: Linux kernel version product support (continued)**

Feature	Product	Release introduced
Linux kernel version	5420 Series	5.10 as of Fabric Engine 9.1
	5520 Series	5.10 as of Fabric Engine 9.1
	5720 Series	5.10 as of Fabric Engine 9.1
	7520 Series	5.10 as of Fabric Engine 9.1
	7720 Series	5.10 as of Fabric Engine 9.1
	VSP 4900 Series	5.10 as of VOSS 9.1
	VSP 7400 Series	5.10 as of VOSS 9.1

**Table 93: Logs and traps product support**

Feature	Product	Release introduced
Logging to a file and syslog (IPv4)	5320 Series	Fabric Engine 8.6
	5420 Series	VOSS 8.4
	5520 Series	VOSS 8.2.5
	5720 Series	Fabric Engine 8.7
	7520 Series	Fabric Engine 8.10
	7720 Series	Fabric Engine 8.10
	VSP 4900 Series	VOSS 8.1
	VSP 7400 Series	VOSS 8.0
Logging to a file and syslog (IPv6)	5320 Series	Fabric Engine 8.6
	5420 Series	VOSS 8.4
	5520 Series	VOSS 8.2.5
	5720 Series	Fabric Engine 8.7
	7520 Series	Fabric Engine 8.10
	7720 Series	Fabric Engine 8.10
	VSP 4900 Series	VOSS 8.1
	VSP 7400 Series	VOSS 8.0
Simple Mail Transfer Protocol (SMTP) for log notification	5320 Series	Fabric Engine 8.6
	5420 Series	VOSS 8.4
	5520 Series	VOSS 8.2.5
	5720 Series	Fabric Engine 8.7
	7520 Series	Fabric Engine 8.10
	7720 Series	Fabric Engine 8.10
	VSP 4900 Series	VOSS 8.1
	VSP 7400 Series	VOSS 8.0

**Table 93: Logs and traps product support (continued)**

Feature	Product	Release introduced
System Logging compliance with RFC 5424 and RFC 3339	5320 Series	Fabric Engine 8.6
	5420 Series	VOSS 8.4
	5520 Series	VOSS 8.2.5
	5720 Series	Fabric Engine 8.7
	7520 Series	Fabric Engine 8.10
	7720 Series	Fabric Engine 8.10
	VSP 4900 Series	VOSS 8.1
	VSP 7400 Series	VOSS 8.0
TLS client for secure syslog	5320 Series	Fabric Engine 8.6
	5420 Series	VOSS 8.4
	5520 Series	VOSS 8.2.5
	5720 Series	Fabric Engine 8.7
	7520 Series	Fabric Engine 8.10
	7720 Series	Fabric Engine 8.10
	VSP 4900 Series	VOSS 8.1
	VSP 7400 Series	VOSS 8.0

**Table 94: LRM/MACsec Adapter product support**

Feature	Product	Release introduced
LRM support  <b>Note:</b> MACsec functionality of the adapter is not supported.	5320 Series	Not Supported
	5420 Series	Not Supported
	5520 Series	Not Supported
	5720 Series	Fabric Engine 8.9 Supported on 5720-VIM-6YE
	7520 Series	Not Supported
	7720 Series	Not Supported
	VSP 4900 Series	Not Supported
	VSP 7400 Series	Not Supported



## Features M to O

**Table 95: MACsec product support**

Feature	Product	Release introduced
MACsec 2AN mode (static)	5320 Series	Not Supported
	5420 Series	Not Supported
	5520 Series	Not Supported
	5720 Series	Not Supported
	7520 Series	Fabric Engine 9.0 Supported on 7520-48YE-8CE For MACsec Key Agreement (MKA)
	7720 Series	Not Supported
	VSP 4900 Series	VOSS 8.5
	VSP 7400 Series	Not Supported

**Table 95: MACsec product support (continued)**

Feature	Product	Release introduced
MACsec 4AN mode (static)	5320 Series	Fabric Engine 8.6
	5420 Series	VOSS 8.5
	5520 Series	VOSS 8.2.5 Not supported on 5520-24X and 5520-VIM-4X 5520-24T and 5520-24W on all fixed ports except 1/25 and 1/26 5520-12MW-36W, 5520-48SE, 5520-48T, and 5520-48W on all fixed ports except 1/49 and 1/50
	5720 Series	Fabric Engine 8.7 5720-24MW and 5720-24MXW on all fixed ports except 1/25 and 1/26 5720-48MW and 5720-48MXW on all fixed ports except 1/49 and 1/50
	7520 Series	Fabric Engine 9.0 Supported on 7520-48YE-8CE
	7720 Series	Not Supported
	VSP 4900 Series	VOSS 8.1
	VSP 7400 Series	Not Supported



**Table 95: MACsec product support (continued)**

Feature	Product	Release introduced
MACsec encryption cipher suites	5320 Series	Fabric Engine 8.6 Both 128 bits and 256 bits
	5420 Series	VOSS 8.5 Both 128 bits and 256 bits
	5520 Series	VOSS 8.2.5 Both 128 bits and 256 bits Not supported on 5520-24X and 5520-VIM-4X 5520-24T and 5520-24W on all fixed ports except 1/25 and 1/26 5520-12MW-36W, 5520-48SE, 5520-48T, and 5520-48W on all fixed ports except 1/49 and 1/50
	5720 Series	Fabric Engine 8.7 Both 128 bits and 256 bits 5720-24MW and 5720-24MXW on all fixed ports except 1/25 and 1/26 5720-48MW and 5720-48MXW on all fixed ports except 1/49 and 1/50
	7520 Series	9.0 Supported on 7520-48YE-8CE Both 128 bits and 256 bits
	7720 Series	Not Supported
	VSP 4900 Series	VOSS 8.1 VSP4900-48P supports 128-bit on all fixed ports. VSP4900-24XE supports 128-bit and 256-bit on all fixed ports. VSP4900-12MXU-12XE supports 128-bit and 256-bit on the SFP+ ports. VIM5-4XE and VIM5-4YE support 128-bit and 256-bit cipher suite.
	VSP 7400 Series	Not Supported

**Table 95: MACsec product support (continued)**

Feature	Product	Release introduced
Automatic QoS priority for MACsec packets on intermediate switches	5320 Series	Fabric Engine 8.9
	5420 Series	Fabric Engine 8.9
	5520 Series	Fabric Engine 8.9
	5720 Series	Fabric Engine 8.9
	7520 Series	Fabric Engine 8.10
	7720 Series	Fabric Engine 8.10
	VSP 4900 Series	VOSS 8.9
	VSP 7400 Series	VOSS 8.9
MACsec Key Agreement (MKA)	5320 Series	Not Supported
	5420 Series	Not Supported
	5520 Series	VOSS 8.5 Not supported on 5520-24X and 5520-VIM-4X
	5720 Series	Fabric Engine 8.7 5720-24MW and 5720-24MXW on all fixed ports except 1/25 and 1/26 5720-48MW and 5720-48MXW on all fixed ports except 1/49 and 1/50
	7520 Series	9.0 Supported on 7520-48YE-8CE
	7720 Series	Not Supported
	VSP 4900 Series	VOSS 8.5
	VSP 7400 Series	Not Supported

**Table 96: Mroute statistics product support**

Feature	Product	Release introduced
	5320 Series	Fabric Engine 8.6

**Table 96: Mroute statistics product support (continued)**

Feature	Product	Release introduced
Multicast route (mroute) statistics for IPv4 and IPv6	5420 Series	VOSS 8.4
	5520 Series	VOSS 8.2.5
	5720 Series	Fabric Engine 8.7
	7520 Series	Fabric Engine 8.10
	7720 Series	Fabric Engine 8.10
	VSP 4900 Series	VOSS 8.1
	VSP 7400 Series	VOSS 8.0

**Table 97: MSTP-Fabric Connect Multi Homing product support**

Feature	Product	Release introduced
MSTP-Fabric Connect Multi Homing	5320 Series	Fabric Engine 8.6
	5420 Series	VOSS 8.4
	5520 Series	VOSS 8.2.5
	5720 Series	Fabric Engine 8.7
	7520 Series	Fabric Engine 8.10
	7720 Series	Fabric Engine 8.10
	VSP 4900 Series	VOSS 8.1
VSP 7400 Series	VOSS 8.0	

**Table 98: Multi-area SPB product support**

Feature	Product	Release introduced
Multi-area SPB Boundary Node	5320 Series	Not Supported
	5420 Series	Not Supported
	5520 Series	Fabric Engine 8.10
	5720 Series	Fabric Engine 8.10
	7520 Series	Fabric Engine 8.10
	7720 Series	Fabric Engine 8.10
	VSP 4900 Series	Not Supported
VSP 7400 Series	VOSS 8.4	

**Table 98: Multi-area SPB product support (continued)**

Feature	Product	Release introduced
Static data I-SID redistribution for Multi-area SPB Boundary Node	5320 Series	Not Supported
	5420 Series	Not Supported
	5520 Series	Fabric Engine 8.10
	5720 Series	Fabric Engine 8.10
	7520 Series	Fabric Engine 8.10
	7720 Series	Fabric Engine 8.10
	VSP 4900 Series	Not Supported
	VSP 7400 Series	VOSS 8.8
Virtual NNI links for Multi-area SPB Boundary Nodes	5320 Series	Not Supported
	5420 Series	Not Supported
	5520 Series	Not Supported
	5720 Series	Fabric Engine 9.1
	7520 Series	Fabric Engine 9.0.3
	7720 Series	Fabric Engine 9.0.3
	VSP 4900 Series	Not Supported
	VSP 7400 Series	VOSS 9.0.3

**Table 99: Multicast Listener Discovery product support**

Feature	Product	Release introduced
Multicast Listener Discovery (MLD)	5320 Series	Fabric Engine 8.6
	5420 Series	VOSS 8.4
	5520 Series	VOSS 8.2.5
	5720 Series	Fabric Engine 8.7
	7520 Series	Fabric Engine 8.10
	7720 Series	Fabric Engine 8.10
	VSP 4900 Series	VOSS 8.1
	VSP 7400 Series	VOSS 8.0

**Table 100: MultiLink Trunking product support**

Feature	Product	Release introduced
	5320 Series	Fabric Engine 8.6
	5420 Series	VOSS 8.4

**Table 100: MultiLink Trunking product support (continued)**

Feature	Product	Release introduced
MultiLink Trunking (MLT) / Link Aggregation Group (LAG)	5520 Series	VOSS 8.2.5
	5720 Series	Fabric Engine 8.7
	7520 Series	Fabric Engine 8.10
	7720 Series	Fabric Engine 8.10
	VSP 4900 Series	VOSS 8.1
	VSP 7400 Series	VOSS 8.0

**Table 101: Multiple CLI Users product support**

Feature	Product	Release introduced
Multiple CLI users per role	5320 Series	Fabric Engine 8.6
	5420 Series	VOSS 8.4
	5520 Series	VOSS 8.2.5
	5720 Series	Fabric Engine 8.7
	7520 Series	Fabric Engine 8.10
	7720 Series	Fabric Engine 8.10
	VSP 4900 Series	VOSS 8.1
	VSP 7400 Series	VOSS 8.0

**Table 102: Network Load Balancing product support**

Feature	Product	Release introduced
Network Load Balancing (NLB) - multicast operation	5320 Series	Not Supported
	5420 Series	Not Supported
	5520 Series	VOSS 8.2.5
	5720 Series	Fabric Engine 8.7
	7520 Series	Fabric Engine 8.10
	7720 Series	Fabric Engine 8.10
	VSP 4900 Series	VOSS 8.1
	VSP 7400 Series	VOSS 8.0

**Table 102: Network Load Balancing product support (continued)**

Feature	Product	Release introduced
Network Load Balancing (NLB) - unicast operation	5320 Series	Not Supported
	5420 Series	Not Supported
	5520 Series	VOSS 8.2.5
	5720 Series	Fabric Engine 8.7
	7520 Series	Fabric Engine 8.10
	7720 Series	Fabric Engine 8.10
	VSP 4900 Series	VOSS 8.1
	VSP 7400 Series	VOSS 8.0

**Table 103: Network operating system personality product support**

Feature	Product	Release introduced
Dual-boot personalities	5320 Series	Fabric Engine 8.6
	5420 Series	VOSS 8.4
	5520 Series	VOSS 8.2.5
	5720 Series	Fabric Engine 8.7
	7720 Series	Fabric Engine 8.10
	7520 Series	Fabric Engine 8.10
	VSP 4900 Series	Not Applicable
	VSP 7400 Series	Not Applicable

**Table 104: Network Time Protocol product support**

Feature	Product	Release introduced
NTPv4 client for IPv4	5320 Series	Fabric Engine 8.6
	5420 Series	VOSS 8.4
	5520 Series	VOSS 8.2.5
	5720 Series	Fabric Engine 8.7
	7520 Series	Fabric Engine 8.10
	7720 Series	Fabric Engine 8.10
	VSP 4900 Series	VOSS 8.1
	VSP 7400 Series	VOSS 8.0

**Table 104: Network Time Protocol product support (continued)**

Feature	Product	Release introduced
NTPv4 client for IPv6	5320 Series	Fabric Engine 8.6
	5420 Series	VOSS 8.4
	5520 Series	VOSS 8.2.5
	5720 Series	Fabric Engine 8.7
	7520 Series	Fabric Engine 8.10
	7720 Series	Fabric Engine 8.10
	VSP 4900 Series	VOSS 8.1
	VSP 7400 Series	VOSS 8.0
NTPv4 master and restrict	5320 Series	Fabric Engine 8.6
	5420 Series	VOSS 8.4
	5520 Series	VOSS 8.2.5
	5720 Series	Fabric Engine 8.7
	7520 Series	Fabric Engine 8.10
	7720 Series	Fabric Engine 8.10
	VSP 4900 Series	VOSS 8.1
	VSP 7400 Series	VOSS 8.0
NTP Authentication Key Obfuscation	5320 Series	Fabric Engine 8.8
	5420 Series	Fabric Engine 8.8
	5520 Series	Fabric Engine 8.8
	5720 Series	Fabric Engine 8.8
	7520 Series	Fabric Engine 8.10
	7720 Series	Fabric Engine 8.10
	VSP 4900 Series	VOSS 8.8
	VSP 7400 Series	VOSS 8.8

**Table 104: Network Time Protocol product support (continued)**

Feature	Product	Release introduced
NTP Server configuration using fully qualified domain name (FQDN)	5320 Series	Fabric Engine 8.10
	5420 Series	Fabric Engine 8.10
	5520 Series	Fabric Engine 8.10
	5720 Series	Fabric Engine 8.10
	7520 Series	Fabric Engine 8.10
	7720 Series	Fabric Engine 8.10
	VSP 4900 Series	VOSS 8.10
	VSP 7400 Series	VOSS 8.10

**Table 105: nni-mstp boot flag product support**

Feature	Product	Release introduced
nni-mstp boot flag ( <code>boot config flags nni-mstp</code> )	5320 Series	Fabric Engine 8.6
	5420 Series	VOSS 8.4
	5520 Series	VOSS 8.2.5
	5720 Series	Fabric Engine 8.7
	7520 Series	Fabric Engine 8.10
	7720 Series	Fabric Engine 8.10
	VSP 4900 Series	VOSS 8.1
	VSP 7400 Series	VOSS 8.0

**Table 106: Node Alias product support**

Feature	Product	Release introduced
	5320 Series	Fabric Engine 9.1



**Table 106: Node Alias product support (continued)**

Feature	Product	Release introduced
Node Alias and DHCP Fingerprinting	5420 Series	Fabric Engine 9.1
	5520 Series	Fabric Engine 9.1
	5720 Series	Fabric Engine 9.1
	7520 Series	Fabric Engine 9.1
	7720 Series	Fabric Engine 9.1
	VSP 4900 Series	VOSS 9.1
	VSP 7400 Series	VOSS 9.1

**Table 107: OSPF product support**

Feature	Product	Release introduced
Open Shortest Path First (OSPF)	5320 Series	Fabric Engine 8.6 Only 5320-48P-8XE and 5320-48T-8XE support more than one VRF with IP configuration.
	5420 Series	VOSS 8.4
	5520 Series	VOSS 8.2.5
	5720 Series	Fabric Engine 8.7
	7520 Series	Fabric Engine 8.10
	7720 Series	Fabric Engine 8.10
	VSP 4900 Series	VOSS 8.1
	VSP 7400 Series	VOSS 8.0
Secure hash algorithm 1 (SHA-1) and SHA-2	5320 Series	Fabric Engine 8.6
	5420 Series	VOSS 8.4
	5520 Series	VOSS 8.2.5
	5720 Series	Fabric Engine 8.7
	7520 Series	Fabric Engine 8.10
	7720 Series	Fabric Engine 8.10
	VSP 4900 Series	VOSS 8.1
	VSP 7400 Series	VOSS 8.0

**Table 108: OSPFv3 product support**

Feature	Product	Release introduced
OSPFv3	5320 Series	Fabric Engine 8.6

**Table 108: OSPFv3 product support (continued)**

Feature	Product	Release introduced
		Only 5320-48P-8XE and 5320-48T-8XE support more than one VRF with IP configuration.
	5420 Series	VOSS 8.4
	5520 Series	VOSS 8.2.5
	5720 Series	Fabric Engine 8.7
	7520 Series	Fabric Engine 8.10
	7720 Series	Fabric Engine 8.10
	VSP 4900 Series	VOSS 8.1
	VSP 7400 Series	VOSS 8.0
OSPFv3 support for CLIP interfaces	5320 Series	Fabric Engine 8.10.1
	5420 Series	Fabric Engine 8.10.1
	5520 Series	Fabric Engine 8.10.1
	5720 Series	Fabric Engine 8.10.1
	7520 Series	Fabric Engine 8.10.1
	7720 Series	Fabric Engine 8.10.1
	VSP 4900 Series	VOSS 8.10.1
	VSP 7400 Series	VOSS 8.10.1



## Features P to R

**Table 109: Password Hash**

Feature	Product	Release introduced
<b>SHA512 Password Hashing</b>  <b>Note:</b> When upgrading, SHA1 password hashes and custom users are retained, until a factory default reset or until the password hash level is changed. During a factory default reset, SHA2 512-bit becomes the default password hash, all custom users are deleted, and SHA1 passwords are removed.	5320 Series	Fabric Engine 8.8
	5420 Series	Fabric Engine 8.8
	5520 Series	Fabric Engine 8.8
	5720 Series	Fabric Engine 8.8
	7520 Series	Fabric Engine 8.10
	7720 Series	Fabric Engine 8.10
	VSP 4900 Series	VOSS 8.8
	VSP 7400 Series	VOSS 8.8

**Table 110: PIM over IPv6 product support**

Feature	Product	Release introduced
PIM over IPv6	5320 Series	Fabric Engine 8.6
	5420 Series	VOSS 8.4
	5520 Series	VOSS 8.2.5
	5720 Series	Fabric Engine 8.7
	7520 Series	Fabric Engine 8.10
	7720 Series	Fabric Engine 8.10
	VSP 4900 Series	VOSS 8.1
	VSP 7400 Series	VOSS 8.0

**Table 111: Port-Based Rate Limiting, Policing, and Shaping product support**

Feature	Product	Release introduced
	5320 Series	Fabric Engine 8.6

**Table 111: Port-Based Rate Limiting, Policing, and Shaping product support (continued)**

Feature	Product	Release introduced
Egress port shaper	5420 Series	VOSS 8.4
	5520 Series	VOSS 8.2.5
	5720 Series	Fabric Engine 8.7
	7520 Series	Fabric Engine 8.10
	7720 Series	Fabric Engine 8.10
	VSP 4900 Series	VOSS 8.1
	VSP 7400 Series	VOSS 8.0
Ingress policer and port rate limiter	5320 Series	Fabric Engine 8.6
	5420 Series	VOSS 8.5
	5520 Series	VOSS 8.5
	5720 Series	Fabric Engine 8.7
	7520 Series	Fabric Engine 8.10
	7720 Series	Fabric Engine 8.10
	VSP 4900 Series	VOSS 8.5
	VSP 7400 Series	VOSS 8.5
QoS ingress port-based rate limiter	5320 Series	Not Supported
	5420 Series	Not Supported
	5520 Series	Not Supported
	5720 Series	Not Supported
	7520 Series	Not Supported
	7720 Series	Not Supported
	VSP 4900 Series	VOSS 8.1
	VSP 7400 Series	Not Supported

**Table 112: Port Mirroring product support**

Feature	Product	Release introduced
	5320 Series	Fabric Engine 8.6

**Table 112: Port Mirroring product support (continued)**

Feature	Product	Release introduced
Ingress mirroring (port and flow-based)	5420 Series	VOSS 8.4
	5520 Series	VOSS 8.2.5
	5720 Series	Fabric Engine 8.7
	7520 Series	Fabric Engine 8.10
	7720 Series	Fabric Engine 8.10
	VSP 4900 Series	VOSS 8.1
	VSP 7400 Series	VOSS 8.0
Egress mirroring (port-based)	5320 Series	Fabric Engine 8.6
	5420 Series	VOSS 8.4
	5520 Series	VOSS 8.2.5
	5720 Series	Fabric Engine 8.7
	7520 Series	Fabric Engine 8.10
	7720 Series	Fabric Engine 8.10
	VSP 4900 Series	VOSS 8.1
	VSP 7400 Series	VOSS 8.0

**Table 113: Power over Ethernet product support**

Feature	Product	Release introduced
Power over Ethernet (PoE)	5320 Series	Fabric Engine 8.6 Not supported on 5320-24T-8XE or 5320-48T-8XE
	5420 Series	VOSS 8.4 Not supported on: <ul style="list-style-type: none"> <li>• 5420F-24T-4XE</li> <li>• 5420F-48T-4XE</li> <li>• 5420F-24S-4XE</li> <li>• 5420M-24T-4YE</li> <li>• 5420M-48T-4YE</li> </ul>
	5520 Series	VOSS 8.2.5 Supported on: <ul style="list-style-type: none"> <li>• 5520-12MW-36W</li> <li>• 5520-24W</li> <li>• 5520-48W</li> </ul>
	5720 Series	Fabric Engine 8.7

**Table 113: Power over Ethernet product support (continued)**

Feature	Product	Release introduced
		Not supported on 5720-VIM-2CE or 5720-VIM-6YE
	7520 Series	Not Applicable
	7720 Series	Not Applicable
	VSP 4900 Series	VOSS 8.1 Supported on all fixed ports on VSP4900-48P and ports 1/1-1/12 on VSP4900-12MXU-12XE
	VSP 7400 Series	Not Applicable
PoE/PoE+ allocation using LLDP	5320 Series	Fabric Engine 8.6 Not supported on 5320-24T-8XE or 5320-48T-8XE
	5420 Series	VOSS 8.4 Not supported on: <ul style="list-style-type: none"> <li>• 5420F-24T-4XE</li> <li>• 5420F-48T-4XE</li> <li>• 5420F-24S-4XE</li> <li>• 5420M-24T-4YE</li> <li>• 5420M-48T-4YE</li> </ul>
	5520 Series	VOSS 8.2.5 Supported on: <ul style="list-style-type: none"> <li>• 5520-12MW-36W</li> <li>• 5520-24W</li> <li>• 5520-48W</li> </ul>
	5720 Series	Fabric Engine 8.7 Not supported on 5720-VIM-2CE or 5720-VIM-6YE
	7520 Series	Not Applicable
	7720 Series	Not Applicable
	VSP 4900 Series	VOSS 8.1 Supported on all fixed ports on VSP4900-48P and ports 1/1-1/12 on VSP4900-12MXU-12XE
	VSP 7400 Series	Not Applicable

**Table 113: Power over Ethernet product support (continued)**

Feature	Product	Release introduced
Fast PoE	5320 Series	Fabric Engine 8.6 Not supported on 5320-24T-8XE or 5320-48T-8XE
	5420 Series	VOSS 8.4 Not supported on: <ul style="list-style-type: none"> <li>• 5420F-24T-4XE</li> <li>• 5420F-48T-4XE</li> <li>• 5420F-24S-4XE</li> <li>• 5420M-24T-4YE</li> <li>• 5420M-48T-4YE</li> </ul>
	5520 Series	VOSS 8.2.5 Supported on: <ul style="list-style-type: none"> <li>• 5520-12MW-36W</li> <li>• 5520-24W</li> <li>• 5520-48W</li> </ul>
	5720 Series	Fabric Engine 8.7 Not supported on 5720- VIM-2CE or 5720-VIM-6YE
	7520 Series	Not Applicable
	7720 Series	Not Applicable
	VSP 4900 Series	VOSS 8.1 Supported on all fixed ports on VSP4900-48P and ports 1/1-1/12 on VSP4900-12MXU-12XE
	VSP 7400 Series	Not Applicable

**Table 113: Power over Ethernet product support (continued)**

Feature	Product	Release introduced
Perpetual PoE	5320 Series	Fabric Engine 8.6 Not supported on 5320-24T-8XE or 5320-48T-8XE
	5420 Series	VOSS 8.4 Not supported on: <ul style="list-style-type: none"> <li>• 5420F-24T-4XE</li> <li>• 5420F-48T-4XE</li> <li>• 5420F-24S-4XE</li> <li>• 5420M-24T-4YE</li> <li>• 5420M-48T-4YE</li> </ul>
	5520 Series	VOSS 8.2.5 Supported on: <ul style="list-style-type: none"> <li>• 5520-12MW-36W</li> <li>• 5520-24W</li> <li>• 5520-48W</li> </ul>
	5720 Series	Fabric Engine 8.7 Not supported on 5720- VIM-2CE or 5720-VIM-6YE
	7520 Series	Not Applicable
	7720 Series	Not Applicable
	VSP 4900 Series	VOSS 8.1 Supported on all fixed ports on VSP4900-48P and ports 1/1-1/12 on VSP4900-12MXU-12XE
	VSP 7400 Series	Not Applicable

**Table 114: Protocol Independent Multicast-Source Specific Mode product support**

Feature	Product	Release introduced
	5320 Series	Fabric Engine 8.6



**Table 114: Protocol Independent Multicast-Source Specific Mode product support (continued)**

Feature	Product	Release introduced
PIM-Source Specific Mode (PIM-SSM) for IPv4	5420 Series	VOSS 8.4
	5520 Series	VOSS 8.2.5
	5720 Series	Fabric Engine 8.7
	7520 Series	Fabric Engine 8.10
	7720 Series	Fabric Engine 8.10
	VSP 4900 Series	VOSS 8.1
	VSP 7400 Series	VOSS 8.0

**Table 115: Protocol Independent Multicast - Sparse Mode product support**

Feature	Product	Release introduced
Protocol Independent Multicast-Sparse Mode (PIM-SM) for IPv4	5320 Series	Fabric Engine 8.6
	5420 Series	VOSS 8.4
	5520 Series	VOSS 8.2.5
	5720 Series	Fabric Engine 8.7
	7520 Series	Fabric Engine 8.10
	7720 Series	Fabric Engine 8.10
	VSP 4900 Series	VOSS 8.1
	VSP 7400 Series	VOSS 8.0
PIM Infinite Threshold for IPv4 and IPv6	5320 Series	Fabric Engine 8.6
	5420 Series	VOSS 8.5
	5520 Series	VOSS 8.5
	5720 Series	Fabric Engine 8.7
	7520 Series	Fabric Engine 8.10
	7720 Series	Fabric Engine 8.10
	VSP 4900 Series	VOSS 8.5
	VSP 7400 Series	VOSS 8.5

**Table 116: QoS and VoIP product support**

Feature	Product	Release introduced
Automatic QoS	5320 Series	Not Supported Use Auto-sense with IP Phone support instead.
	5420 Series	Not Supported

**Table 116: QoS and VoIP product support (continued)**

Feature	Product	Release introduced
		Use Auto-sense with IP Phone support instead.
	5520 Series	Not Supported Use Auto-sense with IP Phone support instead.
	5720 Series	Not Supported Use Auto-sense with IP Phone support instead.
	7520 Series	Not Supported Use Auto-sense with IP Phone support instead.
	7720 Series	Not Supported Use Auto-sense with IP Phone support instead.
	VSP 4900 Series	VOSS 8.1
	VSP 7400 Series	VOSS 8.0

**Table 117: Queue Profiles product support**

Feature	Product	Release introduced
QoS per queue rate limiting	5320 Series	Fabric Engine 8.6
	5420 Series	VOSS 8.4
	5520 Series	VOSS 8.2.5
	5720 Series	Fabric Engine 8.7
	7520 Series	Fabric Engine 8.10
	7720 Series	Fabric Engine 8.10
	VSP 4900 Series	VOSS 8.1
	VSP 7400 Series	VOSS 8.0

**Table 118: RADIUS product support**

Feature	Product	Release introduced
	5320 Series	Fabric Engine 8.6

**Table 118: RADIUS product support (continued)**

Feature	Product	Release introduced
RADIUS (IPv6)	5420 Series	VOSS 8.4
	5520 Series	VOSS 8.2.5
	5720 Series	Fabric Engine 8.7
	7520 Series	Fabric Engine 8.10
	7720 Series	Fabric Engine 8.10
	VSP 4900 Series	VOSS 8.1
	VSP 7400 Series	VOSS 8.0
RADIUS, community-based users (IPv4)	5320 Series	Fabric Engine 8.6
	5420 Series	VOSS 8.4
	5520 Series	VOSS 8.2.5
	5720 Series	Fabric Engine 8.7
	7520 Series	Fabric Engine 8.10
	7720 Series	Fabric Engine 8.10
	VSP 4900 Series	VOSS 8.1
RFC 5176 – Dynamic Authorization Extensions to RADIUS	5320 Series	Fabric Engine 8.6
	5420 Series	VOSS 8.4
	5520 Series	VOSS 8.2.5
	5720 Series	Fabric Engine 8.7
	7520 Series	Fabric Engine 8.10
	7720 Series	Fabric Engine 8.10
	VSP 4900 Series	VOSS 8.1
RFC 5997 – RADIUS Reachability Server Status	5320 Series	Fabric Engine 8.6
	5420 Series	VOSS 8.4
	5520 Series	VOSS 8.2.5
	5720 Series	Fabric Engine 8.7
	7520 Series	Fabric Engine 8.10
	7720 Series	Fabric Engine 8.10
	VSP 4900 Series	VOSS 8.1
VSP 7400 Series	VOSS 8.0	

**Table 118: RADIUS product support (continued)**

Feature	Product	Release introduced
RADIUS Configuration using Fully Qualified Domain Name (FQDN)	5320 Series	Fabric Engine 9.0.2
	5420 Series	Fabric Engine 9.0.2
	5520 Series	Fabric Engine 9.0.2
	5720 Series	Fabric Engine 9.0.2
	7520 Series	Fabric Engine 9.0.2
	7720 Series	Fabric Engine 9.0.2
	VSP 4900 Series	VOSS 9.0.2
	VSP 7400 Series	VOSS 9.0.2

**Table 119: RADSec product support**

Feature	Product	Release introduced
RADIUS Security (RADSec)	5320 Series	Fabric Engine 8.6
	5420 Series	VOSS 8.4
	5520 Series	VOSS 8.2.5
	5720 Series	Fabric Engine 8.7
	7520 Series	Fabric Engine 8.10
	7720 Series	Fabric Engine 8.10
	VSP 4900 Series	VOSS 8.2
	VSP 7400 Series	VOSS 8.2

**Table 120: Remote Monitoring product support**

Feature	Product	Release introduced
Remote Monitoring 1 (RMON1) for Layer 1 and Layer 2	5320 Series	Fabric Engine 8.6
	5420 Series	VOSS 8.4
	5520 Series	VOSS 8.2.5
	5720 Series	Fabric Engine 8.7
	7520 Series	Fabric Engine 8.10
	7720 Series	Fabric Engine 8.10
	VSP 4900 Series	VOSS 8.1
	VSP 7400 Series	VOSS 8.0

**Table 120: Remote Monitoring product support (continued)**

Feature	Product	Release introduced
Remote Monitoring 2 (RMON2) for network and application layer protocols	5320 Series	Fabric Engine 8.6
	5420 Series	VOSS 8.4
	5520 Series	VOSS 8.2.5
	5720 Series	Fabric Engine 8.7
	7520 Series	Fabric Engine 8.10
	7720 Series	Fabric Engine 8.10
	VSP 4900 Series	VOSS 8.1
	VSP 7400 Series	VOSS 8.0

**Table 121: Representational State Transfer Configuration Protocol (RESTCONF) product support**

Feature	Product	Release introduced
Representational State Transfer Configuration Protocol (RESTCONF)	5320 Series	Fabric Engine 8.6
	5420 Series	VOSS 8.4
	5520 Series	VOSS 8.2.5
	5720 Series	Fabric Engine 8.7
	7520 Series	Fabric Engine 8.10
	7720 Series	Fabric Engine 8.10
	VSP 4900 Series	VOSS 8.1
	VSP 7400 Series	VOSS 8.0

**Table 122: RIPng product support**

Feature	Product	Release introduced
	5320 Series	Fabric Engine 8.6

**Table 122: RIPng product support (continued)**

Feature	Product	Release introduced
RIPng	5420 Series	VOSS 8.4
	5520 Series	VOSS 8.2.5
	5720 Series	Fabric Engine 8.7
	7520 Series	Fabric Engine 8.10
	7720 Series	Fabric Engine 8.10
	VSP 4900 Series	VOSS 8.1
	VSP 7400 Series	VOSS 8.0

**Table 123: Routing Information Protocol product support**

Feature	Product	Release introduced
Routing Information Protocol (RIP)	5320 Series	Fabric Engine 8.6
	5420 Series	VOSS 8.4
	5520 Series	VOSS 8.2.5
	5720 Series	Fabric Engine 8.7
	7520 Series	Fabric Engine 8.10
	7720 Series	Fabric Engine 8.10
	VSP 4900 Series	VOSS 8.1
	VSP 7400 Series	VOSS 8.0

**Table 124: RSMLT for IPv4 product support**

Feature	Product	Release introduced
IPv4 RSMLT	5320 Series	Not Supported
	5420 Series	VOSS 8.4
	5520 Series	VOSS 8.2.5
	5720 Series	Fabric Engine 8.7
	7520 Series	Fabric Engine 8.10
	7720 Series	Fabric Engine 8.10
	VSP 4900 Series	VOSS 8.1
	VSP 7400 Series	VOSS 8.0

**Table 125: RSMLT for IPv6 product support**

Feature	Product	Release introduced
	5320 Series	Not Supported

**Table 125: RSMLT for IPv6 product support (continued)**

Feature	Product	Release introduced
IPv6 RSMLT	5420 Series	VOSS 8.4
	5520 Series	VOSS 8.2.5
	5720 Series	Fabric Engine 8.7
	7520 Series	Fabric Engine 8.10
	7720 Series	Fabric Engine 8.10
	VSP 4900 Series	VOSS 8.1
	VSP 7400 Series	VOSS 8.0

**Table 126: run spbm installation script product support**

Feature	Product	Release introduced
run spbm installation script	5320 Series	Fabric Engine 8.6
	5420 Series	VOSS 8.4
	5520 Series	VOSS 8.2.5
	5720 Series	Fabric Engine 8.7
	7520 Series	Fabric Engine 8.10
	7720 Series	Fabric Engine 8.10
	VSP 4900 Series	VOSS 8.1
	VSP 7400 Series	VOSS 8.0



## Features S to U

**Table 127: SD-WAN product support**

Feature	Product	Release introduced
Fabric Extend Integration with ExtremeCloud SD-WAN	5320 Series	Fabric Engine 8.10.1 Only 5320-48P-8XE and 5320-48T-8XE support more than one VRF with IP configuration. Beginning with Fabric Engine 9.0.3, you can specify the VRF that Auto-sense uses for SD-WAN on models that support a single active VRF.
	5420 Series	Fabric Engine 8.10.1
	5520 Series	Fabric Engine 8.10.1
	5720 Series	Fabric Engine 8.10.1
	7520 Series	Fabric Engine 8.10.1
	7720 Series	Fabric Engine 8.10.1
	VSP 4900 Series	VOSS 8.10.1
VSP 7400 Series	VOSS 8.10.1	
Auto-sense port Multi-area SPB support	5320 Series	Not Supported
	5420 Series	Not Supported
	5520 Series	Fabric Engine 9.0.3
	5720 Series	Fabric Engine 9.0.3
	7520 Series	Fabric Engine 9.0.3
	7720 Series	Fabric Engine 9.0.3
	VSP 4900 Series	Not Supported
VSP 7400 Series	VOSS 9.0.3	



**Table 127: SD-WAN product support (continued)**

Feature	Product	Release introduced
mgmt sdwan interface  <b>Note:</b> Requires a minimum of ExtremeCloud SD-WAN 24.4	5320 Series	Fabric Engine 9.1
	5420 Series	Fabric Engine 9.1
	5520 Series	Fabric Engine 9.1
	5720 Series	Fabric Engine 9.1
	7520 Series	Fabric Engine 9.1
	7720 Series	Fabric Engine 9.1
	VSP 4900 Series	VOSS 9.1
	VSP 7400 Series	VOSS 9.1

**Table 128: SD-WAN Local Breakout product support**

Feature	Product	Release introduced
ExtremeCloud SD-WAN Local Breakout configuration applied through Auto-sense	5320 Series	Fabric Engine 9.1 Supported on 5320-48P-8XE and 5320-48T-8XE only
	5420 Series	Fabric Engine 9.1
	5520 Series	Fabric Engine 9.1
	5720 Series	Fabric Engine 9.1
	7520 Series	Fabric Engine 9.1
	7720 Series	Fabric Engine 9.1
	VSP 4900 Series	VOSS 9.1
	VSP 7400 Series	VOSS 9.1

**Table 129: Secondary IP Interfaces product support**

Feature	Product	Release introduced
Secondary IP Interfaces	5320 Series	Fabric Engine 8.10 Only 5320-48P-8XE and 5320-48T-8XE support

**Table 129: Secondary IP Interfaces product support (continued)**

Feature	Product	Release introduced
		more than one VRF with IP configuration.
	5420 Series	Fabric Engine 8.10
	5520 Series	Fabric Engine 8.10
	5720 Series	Fabric Engine 8.10
	7520 Series	Fabric Engine 8.10
	7720 Series	Fabric Engine 8.10
	VSP 4900 Series	VOSS 8.10
	VSP 7400 Series	VOSS 8.10

**Table 130: Secure Boot product support**

Feature	Product	Release introduced
Secure Boot For more information, see the <i>Hardware Installation Guide</i> for the supported product.	5320 Series	Not Supported
	5420 Series	Supported
	5520 Series	Supported
	5720 Series	Supported
	7520 Series	Supported
	7720 Series	Supported
	VSP 4900 Series	Not Supported
	VSP 7400 Series	Not Supported

**Table 131: Secure Shell product support**

Feature	Product	Release introduced
Secure Shell (SSH) server (IPv4)	5320 Series	Fabric Engine 8.6
	5420 Series	VOSS 8.4
	5520 Series	VOSS 8.2.5
	5720 Series	Fabric Engine 8.7
	7520 Series	Fabric Engine 8.10
	7720 Series	Fabric Engine 8.10
	VSP 4900 Series	VOSS 8.1
	VSP 7400 Series	VOSS 8.0

**Table 131: Secure Shell product support (continued)**

Feature	Product	Release introduced
Secure Shell (SSH) client (IPv4)	5320 Series	Fabric Engine 8.6
	5420 Series	VOSS 8.4
	5520 Series	VOSS 8.2.5
	5720 Series	Fabric Engine 8.7
	7520 Series	Fabric Engine 8.10
	7720 Series	Fabric Engine 8.10
	VSP 4900 Series	VOSS 8.1
	VSP 7400 Series	VOSS 8.0
Secure Sockets Layer (SSL) certificate management	5320 Series	Fabric Engine 8.6
	5420 Series	VOSS 8.4
	5520 Series	VOSS 8.2.5
	5720 Series	Fabric Engine 8.7
	7520 Series	Fabric Engine 8.10
	7720 Series	Fabric Engine 8.10
	VSP 4900 Series	VOSS 8.1
	VSP 7400 Series	VOSS 8.0
SSH server (IPv6)	5320 Series	Fabric Engine 8.6
	5420 Series	VOSS 8.4
	5520 Series	VOSS 8.2.5
	5720 Series	Fabric Engine 8.7
	7520 Series	Fabric Engine 8.10
	7720 Series	Fabric Engine 8.10
	VSP 4900 Series	VOSS 8.1
	VSP 7400 Series	VOSS 8.0
SSH client (IPv6)	5320 Series	Fabric Engine 8.6
	5420 Series	VOSS 8.4
	5520 Series	VOSS 8.2.5
	5720 Series	Fabric Engine 8.7
	7520 Series	Fabric Engine 8.10
	7720 Series	Fabric Engine 8.10
	VSP 4900 Series	VOSS 8.1
	VSP 7400 Series	VOSS 8.0

**Table 131: Secure Shell product support (continued)**

Feature	Product	Release introduced
SSH client disable	5320 Series	Fabric Engine 8.6
	5420 Series	VOSS 8.4
	5520 Series	VOSS 8.2.5
	5720 Series	Fabric Engine 8.7
	7520 Series	Fabric Engine 8.10
	7720 Series	Fabric Engine 8.10
	VSP 4900 Series	VOSS 8.1
	VSP 7400 Series	VOSS 8.0
SSH key sizes in multiples of 1024	5320 Series	Fabric Engine 8.6
	5420 Series	VOSS 8.4
	5520 Series	VOSS 8.2.5
	5720 Series	Fabric Engine 8.7
	7520 Series	Fabric Engine 8.10
	7720 Series	Fabric Engine 8.10
	VSP 4900 Series	VOSS 8.1
	VSP 7400 Series	VOSS 8.0
SSH rekey	5320 Series	Fabric Engine 8.6
	5420 Series	VOSS 8.4
	5520 Series	VOSS 8.2.5
	5720 Series	Fabric Engine 8.7
	7520 Series	Fabric Engine 8.10
	7720 Series	Fabric Engine 8.10
	VSP 4900 Series	VOSS 8.1
	VSP 7400 Series	VOSS 8.0

**Table 132: Segmented Management Instance product support**

Feature	Product	Release introduced
	5320 Series	Fabric Engine 8.6
	5420 Series	VOSS 8.4

**Table 132: Segmented Management Instance product support (continued)**

Feature	Product	Release introduced
Segmented Management Instance - Management Interface CLIP	5520 Series	VOSS 8.2.5
	5720 Series	Fabric Engine 8.7
	7520 Series	Fabric Engine 8.10
	7720 Series	Fabric Engine 8.10
	VSP 4900 Series	VOSS 8.1
	VSP 7400 Series	VOSS 8.0
Segmented Management Instance - Management Interface OOB	5320 Series	Not Applicable
	5420 Series	VOSS 8.4
	5520 Series	VOSS 8.2.5
	5720 Series	Fabric Engine 8.7
	7520 Series	Fabric Engine 8.10
	7720 Series	Fabric Engine 8.10
	VSP 4900 Series	VOSS 8.2
	VSP 7400 Series	VOSS 8.2
Segmented Management Instance - Management Interface VLAN	5320 Series	Fabric Engine 8.6
	5420 Series	VOSS 8.4
	5520 Series	VOSS 8.2.5
	5720 Series	Fabric Engine 8.7
	7520 Series	Fabric Engine 8.10
	7720 Series	Fabric Engine 8.10
	VSP 4900 Series	VOSS 8.1
	VSP 7400 Series	VOSS 8.0
Segmented Management Instance — ability to migrate VLAN or loopback IP address	5320 Series	Fabric Engine 8.6
	5420 Series	VOSS 8.4
	5520 Series	VOSS 8.2.5
	5720 Series	Fabric Engine 8.7
	7520 Series	Fabric Engine 8.10
	7720 Series	Fabric Engine 8.10
	VSP 4900 Series	VOSS 8.2
	VSP 7400 Series	VOSS 8.2

**Table 132: Segmented Management Instance product support (continued)**

Feature	Product	Release introduced
Segmented Management Instance — DHCP Client for Management Interface OOB or Management Interface VLAN	5320 Series	Fabric Engine 8.6 OOB is not applicable.
	5420 Series	VOSS 8.4
	5520 Series	VOSS 8.2.5
	5720 Series	Fabric Engine 8.7
	7520 Series	Fabric Engine 8.10
	7720 Series	Fabric Engine 8.10
	VSP 4900 Series	VOSS 8.2
	VSP 7400 Series	VOSS 8.2
Segmented Management Instance — sflow, Application Telemetry, and IPFIX	5320 Series	Fabric Engine 8.8
	5420 Series	Fabric Engine 8.8
	5520 Series	Fabric Engine 8.8
	5720 Series	Fabric Engine 8.8
	7520 Series	Fabric Engine 8.10
	7720 Series	Fabric Engine 8.10
	VSP 4900 Series	VOSS 8.8
	VSP 7400 Series	VOSS 8.8

**Table 133: sFlow product support**

Feature	Product	Release introduced
sFlow	5320 Series	Fabric Engine 8.6
	5420 Series	VOSS 8.4
	5520 Series	VOSS 8.2.5
	5720 Series	Fabric Engine 8.7
	7520 Series	Fabric Engine 8.10
	7720 Series	Fabric Engine 8.10
	VSP 4900 Series	VOSS 8.1
	VSP 7400 Series	VOSS 8.0

**Table 133: sFlow product support (continued)**

Feature	Product	Release introduced
sFlow — using Segmented Management Instance OOB interface as source IP	5320 Series	Not Supported
	5420 Series	VOSS 8.4
	5520 Series	VOSS 8.25
	5720 Series	Fabric Engine 8.7
	7520 Series	Fabric Engine 8.10
	7720 Series	Fabric Engine 8.10
	VSP 4900 Series	VOSS 8.8
	VSP 7400 Series	VOSS 8.8
sFlow — using Segmented Management Instance VLAN interface as source IP	5320 Series	Fabric Engine 8.8
	5420 Series	Fabric Engine 8.8
	5520 Series	Fabric Engine 8.8
	5720 Series	Fabric Engine 8.8
	7520 Series	Fabric Engine 8.10
	7720 Series	Fabric Engine 8.10
	VSP 4900 Series	VOSS 8.8
	VSP 7400 Series	VOSS 8.8
sFlow — using Segmented Management Instance CLIP interface (GRT and VRFs) as source IP	5320 Series	Fabric Engine 8.8
	5420 Series	Fabric Engine 8.8
	5520 Series	Fabric Engine 8.8
	5720 Series	Fabric Engine 8.8
	7520 Series	Fabric Engine 8.10
	7720 Series	Fabric Engine 8.10
	VSP 4900 Series	VOSS 8.8
	VSP 7400 Series	VOSS 8.8

**Table 134: Simple Loop Prevention Protocol product support**

Feature	Product	Release introduced
	5320 Series	Fabric Engine 8.6

**Table 134: Simple Loop Prevention Protocol product support (continued)**

Feature	Product	Release introduced
Simple Loop Prevention Protocol (SLPP)	5420 Series	VOSS 8.4
	5520 Series	VOSS 8.2.5
	5720 Series	Fabric Engine
	7520 Series	Fabric Engine 8.10
	7720 Series	Fabric Engine 8.10
	VSP 4900 Series	VOSS 8.1
	VSP 7400 Series	VOSS 8.0

**Table 135: Simple Network Management Protocol product support**

Feature	Product	Release introduced
Simple Network Management Protocol (SNMP) v1/2/3 (IPv4)	5320 Series	Fabric Engine 8.6
	5420 Series	VOSS 8.4
	5520 Series	VOSS 8.2.5
	5720 Series	Fabric Engine 8.7
	7520 Series	Fabric Engine 8.10
	7720 Series	Fabric Engine 8.10
	VSP 4900 Series	VOSS 8.1
	VSP 7400 Series	VOSS 8.0
SNMP (IPv6)	5320 Series	Fabric Engine 8.6
	5420 Series	VOSS 8.4
	5520 Series	VOSS 8.2.5
	5720 Series	Fabric Engine 8.7
	7520 Series	Fabric Engine 8.10
	7720 Series	Fabric Engine 8.10
	VSP 4900 Series	VOSS 8.1
	VSP 7400 Series	VOSS 8.0

**Table 136: SLPP Guard product support**

Feature	Product	Release introduced
	5320 Series	Fabric Engine 8.6



**Table 136: SLPP Guard product support (continued)**

Feature	Product	Release introduced
SLPP Guard	5420 Series	VOSS 8.4
	5520 Series	VOSS 8.2.5
	5720 Series	Fabric Engine 8.7
	7520 Series	Fabric Engine 8.10
	7720 Series	Fabric Engine 8.10
	VSP 4900 Series	VOSS 8.1
	VSP 7400 Series	VOSS 8.0

**Table 137: SONMP product support**

Feature	Product	Release introduced
SONMP	5320 Series	Fabric Engine 8.6
	5420 Series	VOSS 8.4
	5520 Series	VOSS 8.2.5
	5720 Series	Fabric Engine 8.7
	7520 Series	Fabric Engine 8.10
	7720 Series	Fabric Engine 8.10
	VSP 4900 Series	VOSS 8.1
	VSP 7400 Series	VOSS 8.0

**Table 138: Spanning Tree Protocol product support**

Feature	Product	Release introduced
Spanning Tree Protocol (STP): <ul style="list-style-type: none"> <li>• Multiple STP (MSTP)</li> <li>• Rapid STP (RSTP)</li> </ul>	5320 Series	Fabric Engine 8.6
	5420 Series	VOSS 8.4
	5520 Series	VOSS 8.2.5
	5720 Series	Fabric Engine 8.7
	7520 Series	Fabric Engine 8.10
	7720 Series	Fabric Engine 8.10
	VSP 4900 Series	VOSS 8.1
	VSP 7400 Series	VOSS 8.0

**Table 139: spbm-config-mode product support**

Feature	Product	Release introduced
	5320 Series	Fabric Engine 8.6

**Table 139: spbm-config-mode product support (continued)**

Feature	Product	Release introduced
spbm-config-mode ( <b>boot config flags spbm-config-mode</b> )	5420 Series	VOSS 8.4
	5520 Series	VOSS 8.2.5
	5720 Series	Fabric Engine 8.7
	7520 Series	Fabric Engine 8.10
	7720 Series	Fabric Engine 8.10
	VSP 4900 Series	VOSS 8.1
	VSP 7400 Series	VOSS 8.0

**Table 140: SPB-PIM Gateway product support**

Feature	Product	Release introduced
SPB-PIM Gateway controller node	5320 Series	Not Supported
	5420 Series	Not Supported
	5520 Series	VOSS 8.2.5
	5720 Series	Not Supported
	7520 Series	Fabric Engine 8.10
	7720 Series	Fabric Engine 8.10
	VSP 4900 Series	VOSS 8.1.5 No supported on VSP4900-48P
VSP 7400 Series	VOSS 8.0	
SPB-PIM Gateway interface	5320 Series	Not Supported
	5420 Series	Not Supported
	5520 Series	VOSS 8.2.5
	5720 Series	Not Supported
	7520 Series	Fabric Engine 8.10
	7720 Series	Fabric Engine 8.10
	VSP 4900 Series	VOSS 8.1
VSP 7400 Series	VOSS 8.0	

**Table 141: Static routing product support**

Feature	Product	Release introduced
Static routing	5320 Series	Fabric Engine 8.6 Only 5320-48P-8XE and 5320-48T-8XE support

**Table 141: Static routing product support (continued)**

Feature	Product	Release introduced
		more than one VRF with IP configuration.
	5420 Series	VOSS 8.4
	5520 Series	VOSS 8.2.5
	5720 Series	Fabric Engine 8.7
	7520 Series	Fabric Engine 8.10
	7720 Series	Fabric Engine 8.10
	VSP 4900 Series	VOSS 8.1
	VSP 7400 Series	VOSS 8.0

**Table 142: TACACS+ product support**

Feature	Product	Release introduced
TACACS+	5320 Series	Fabric Engine 8.6
	5420 Series	VOSS 8.4
	5520 Series	VOSS 8.2.5
	5720 Series	Fabric Engine 8.7
	7520 Series	Fabric Engine 8.10
	7720 Series	Fabric Engine 8.10
	VSP 4900 Series	VOSS 8.1
	VSP 7400 Series	VOSS 8.0
TACACS+ secure communication using IPSec for IPv4	5320 Series	Fabric Engine 8.6
	5420 Series	VOSS 8.4
	5520 Series	VOSS 8.2.5
	5720 Series	Fabric Engine 8.7
	7520 Series	Fabric Engine 8.10
	7720 Series	Fabric Engine 8.10
	VSP 4900 Series	VOSS 8.1
	VSP 7400 Series	VOSS 8.0

**Table 143: TCP Maximum Segment Size (MSS) Adjustment for Fabric Extend**

Feature	Product	Release introduced
	5320 Series	Fabric Engine 8.6
	5420 Series	VOSS 8.5

**Table 143: TCP Maximum Segment Size (MSS) Adjustment for Fabric Extend (continued)**

Feature	Product	Release introduced
Ability to adjust the maximum segment size (MSS)	5520 Series	VOSS 8.5
	5720 Series	Fabric Engine 8.7
	7520 Series	Fabric Engine 8.10
	7720 Series	Fabric Engine 8.10
	VSP 4900 Series	VOSS 8.3.1
	VSP 7400 Series	VOSS 8.3.1

**Table 144: Time Domain Reflectometer product support**

Feature	Product	Release introduced
Time Domain Reflectometer (Cable Diagnostic)	5320 Series	Fabric Engine 9.0.2
	5420 Series	Fabric Engine 8.10 Not supported on 5420F-24S-4XE
	5520 Series	Fabric Engine 9.0.2 Not supported on 5520-24X or 5520-48SE
	5720 Series	Fabric Engine 9.0.2
	7520 Series	Fabric Engine 9.0.2 Supported on 7520-48XT-6C
	7720 Series	Not Supported
	VSP 4900 Series	Not Supported
	VSP 7400 Series	Not Supported

**Table 145: TLS server for secure HTTPS product support**

Feature	Product	Release introduced
	5320 Series	Fabric Engine 8.6

**Table 145: TLS server for secure HTTPS product support (continued)**

Feature	Product	Release introduced
TLS server for secure HTTPS	5420 Series	VOSS 8.4
	5520 Series	VOSS 8.2.5
	5720 Series	Fabric Engine 8.7
	7520 Series	Fabric Engine 8.10
	7720 Series	Fabric Engine 8.10
	VSP 4900 Series	VOSS 8.1
	VSP 7400 Series	VOSS 8.0

**Table 146: Two-Factor Authentication for SSH product support**

Feature	Product	Release introduced
Two-Factor Authentication for SSH	5320 Series	Fabric Engine 8.6
	5420 Series	VOSS 8.4
	5520 Series	VOSS 8.2.5
	5720 Series	Fabric Engine 8.7
	7520 Series	Fabric Engine 8.10
	7720 Series	Fabric Engine 8.10
	VSP 4900 Series	VOSS 8.1
	VSP 7400 Series	VOSS 8.0

**Table 147: Unicast Reverse Path Forwarding product support**

Feature	Product	Release introduced
Unicast Reverse Path Forwarding (URPF) checking (IPv4)	5320 Series	Fabric Engine 8.6 Supported on 5320-48P-8XE and 5320-48T-8XE
	5420 Series	VOSS 8.4
	5520 Series	VOSS 8.2.5
	5720 Series	Fabric Engine 8.7
	7520 Series	Fabric Engine 8.10
	7720 Series	Fabric Engine 8.10
	VSP 4900 Series	VOSS 8.1
	VSP 7400 Series	VOSS 8.0

**Table 147: Unicast Reverse Path Forwarding product support (continued)**

Feature	Product	Release introduced
Unicast Reverse Path Forwarding (URPF) checking (IPv6)	5320 Series	Fabric Engine 8.6 Supported on 5320-48P-8XE and 5320-48T-8XE
	5420 Series	VOSS 8.4
	5520 Series	VOSS 8.2.5
	5720 Series	Fabric Engine 8.7
	7520 Series	Fabric Engine 8.10
	7720 Series	Fabric Engine 8.10
	VSP 4900 Series	VOSS 8.1
	VSP 7400 Series	VOSS 8.0



## Features V to X

**Table 148: Virtual Inter-Switch Trunk product support**

Feature	Product	Release introduced
Switch cluster (multi-chassis LAG) -Virtual Inter-Switch Trunk (vIST)	5320 Series	Not Supported
	5420 Series	VOSS 8.4
	5520 Series	VOSS 8.2.5
	5720 Series	Fabric Engine 8.7
	7520 Series	Fabric Engine 8.10
	7720 Series	Fabric Engine 8.10
	VSP 4900 Series	VOSS 8.1
	VSP 7400 Series	VOSS 8.0

**Table 149: Virtual Link Aggregation Control Protocol (VLACP) product support**

Feature	Product	Release introduced
Virtual Link Aggregation Control Protocol (VLACP)	5320 Series	Fabric Engine 8.6
	5420 Series	VOSS 8.4
	5520 Series	VOSS 8.2.5
	5720 Series	Fabric Engine 8.7
	7520 Series	Fabric Engine 8.10
	7720 Series	Fabric Engine 8.10
	VSP 4900 Series	VOSS 8.1
	VSP 7400 Series	VOSS 8.0

**Table 149: Virtual Link Aggregation Control Protocol (VLACP) product support (continued)**

Feature	Product	Release introduced
VLACP Flap Detect and Damping	5320 Series	Fabric Engine 8.6
	5420 Series	VOSS 8.4
	5520 Series	VOSS 8.2.5
	5720 Series	Fabric Engine 8.7
	7520 Series	Fabric Engine 8.10
	7720 Series	Fabric Engine 8.10
	VSP 4900 Series	VOSS 8.1
	VSP 7400 Series	VOSS 8.1

**Table 150: Virtual Router Redundancy Protocol product support**

Feature	Product	Release introduced
Virtual Router Redundancy Protocol (VRRP)	5320 Series	Fabric Engine 8.6
	5420 Series	VOSS 8.4
	5520 Series	VOSS 8.2.5
	5720 Series	Fabric Engine 8.7
	7520 Series	Fabric Engine 8.10
	7720 Series	Fabric Engine 8.10
	VSP 4900 Series	VOSS 8.1
	VSP 7400 Series	VOSS 8.0
VRRPv3 for IPv4	5320 Series	Fabric Engine 8.6
	5420 Series	VOSS 8.4
	5520 Series	VOSS 8.2.5
	5720 Series	Fabric Engine 8.7
	7520 Series	Fabric Engine 8.10
	7720 Series	Fabric Engine 8.10
	VSP 4900 Series	VOSS 8.1
	VSP 7400 Series	VOSS 8.0

**Table 151: Virtual Router Redundancy Protocol for IPv6 product support**

Feature	Product	Release introduced
	5320 Series	Fabric Engine 8.6



**Table 151: Virtual Router Redundancy Protocol for IPv6 product support (continued)**

Feature	Product	Release introduced
IPv6 VRRP	5420 Series	VOSS 8.4
	5520 Series	VOSS 8.2.5
	5720 Series	Fabric Engine 8.7
	7520 Series	Fabric Engine 8.10
	7720 Series	Fabric Engine 8.10
	VSP 4900 Series	VOSS 8.1
	VSP 7400 Series	VOSS 8.0
VRRPv3 for IPv6	5320 Series	Fabric Engine 8.6
	5420 Series	VOSS 8.4
	5520 Series	VOSS 8.2.5
	5720 Series	Fabric Engine 8.7
	7520 Series	Fabric Engine 8.10
	7720 Series	Fabric Engine 8.10
	VSP 4900 Series	VOSS 8.1
	VSP 7400 Series	VOSS 8.0

**Table 152: Virtual Routing and Forwarding product support**

Feature	Product	Release introduced
Virtualization with IPv4 Virtual Routing and Forwarding (VRF) <ul style="list-style-type: none"> <li>• ARP</li> <li>• DHCP Relay</li> <li>• Inter-VRF Routing (static, dynamic, and policy)</li> <li>• Local routing</li> <li>• OSPFv2</li> <li>• RIPv1 and v2</li> <li>• Route policies</li> <li>• Static routing</li> <li>• VRRP</li> </ul>	5320 Series	Fabric Engine 8.6 Only 5320-48P-8XE and 5320-48T-8XE support more than one VRF with IP configuration.
	5420 Series	VOSS 8.4
	5520 Series	VOSS 8.2.5
	5720 Series	Fabric Engine 8.7
	7520 Series	Fabric Engine 8.10
	7720 Series	Fabric Engine 8.10
	VSP 4900 Series	VOSS 8.1
	VSP 7400 Series	VOSS 8.0

**Table 152: Virtual Routing and Forwarding product support (continued)**

Feature	Product	Release introduced
Increased VRF and Layer 3 VSN scaling	5320 Series	Fabric Engine 8.6 Only 5320-48P-8XE and 5320-48T-8XE support more than one VRF with IP configuration.
	5420 Series	VOSS 8.4
	5520 Series	VOSS 8.2.5
	5720 Series	Fabric Engine 8.7
	7520 Series	Fabric Engine 8.10
	7720 Series	Fabric Engine 8.10
	VSP 4900 Series	VOSS 8.1
	VSP 7400 Series	VOSS 8.0
IBGP over user-created VRFs	5320 Series	Fabric Engine 8.6 Only 5320-48P-8XE and 5320-48T-8XE support more than one VRF with IP configuration.
	5420 Series	VOSS 8.4
	5520 Series	VOSS 8.2.5
	5720 Series	Fabric Engine 8.7
	7520 Series	Fabric Engine 8.10
	7720 Series	Fabric Engine 8.10
	VSP 4900 Series	VOSS 8.1
	VSP 7400 Series	VOSS 8.1
IPv6 Virtualization for the following features and functions: <ul style="list-style-type: none"> <li>• IPv6 Interfaces and IPv6 Static Routes in VRFs and Layer 3 VSNS</li> <li>• ECMP and Alternative route</li> <li>• Route redistribution for static and direct routes</li> <li>• VRRPv3 for IPv6</li> <li>• DHCP Relay</li> <li>• IPv6 Reverse Path Forwarding</li> <li>• ICMP Ping and Traceroute</li> </ul>	5320 Series	Fabric Engine 8.6 Only 5320-48P-8XE and 5320-48T-8XE support more than one VRF with IP configuration.
	5420 Series	VOSS 8.4
	5520 Series	VOSS 8.2.5
	5720 Series	Fabric Engine 8.7
	7520 Series	Fabric Engine 8.10
	7720 Series	Fabric Engine 8.10
	VSP 4900 Series	VOSS 8.1
	VSP 7400 Series	VOSS 8.0

**Table 152: Virtual Routing and Forwarding product support (continued)**

Feature	Product	Release introduced
IPv6 Virtualization for the following features and functions: <ul style="list-style-type: none"> <li>• Open Shortest Path First for IPv6 (OSPFv3)</li> <li>• IPv6 Border Gateway Protocol (IPv6 BGP)</li> <li>• IPv6 route redistribution enhancements</li> </ul>	5320 Series	Fabric Engine 8.6 Only 5320-48P-8XE and 5320-48T-8XE support more than one VRF with IP configuration.
	5420 Series	VOSS 8.4
	5520 Series	VOSS 8.2.5
	5720 Series	Fabric Engine 8.7
	7520 Series	Fabric Engine 8.10
	7720 Series	Fabric Engine 8.10
	VSP 4900 Series	VOSS 8.1
	VSP 7400 Series	VOSS 8.0

**Table 153: VXLAN Gateway product support**

Feature	Product	Release introduced
VXLAN Gateway	5320 Series	Not Supported
	5420 Series	Not Supported
	5520 Series	Not Supported
	5720 Series	Not Supported
	7520 Series	Fabric Engine 8.10
	7720 Series	Fabric Engine 8.10
	VSP 4900 Series	Not Supported
	VSP 7400 Series	VOSS 8.0
OVSDB protocol support for VXLAN Gateway	5320 Series	Not Supported
	5420 Series	Not Supported
	5520 Series	Not Supported
	5720 Series	Not Supported
	7520 Series	Fabric Engine 8.10
	7720 Series	Fabric Engine 8.10
	VSP 4900 Series	Not Supported
	VSP 7400 Series	VOSS 8.0

**Table 153: VXLAN Gateway product support (continued)**

Feature	Product	Release introduced
ECMP support for VXLAN Gateway	5320 Series	Not Supported
	5420 Series	Not Supported
	5520 Series	Not Supported
	5720 Series	Not Supported
	7520 Series	Fabric Engine 8.10
	7720 Series	Fabric Engine 8.10
	VSP 4900 Series	Not Supported
	VSP 7400 Series	VOSS 8.0



## Features Y and Z

**Table 154: Zero Touch Deployment product support**

Feature	Product	Release introduced
Zero Touch Deployment	5320 Series	Fabric Engine 8.6
	5420 Series	VOSS 8.4
	5520 Series	VOSS 8.2.5
	5720 Series	Fabric Engine 8.7
	7520 Series	Fabric Engine 8.10
	7720 Series	Fabric Engine 8.10
	VSP 4900 Series	VOSS 8.2 Not supported on VIM5-4Y or VIM5-Q2Q
	VSP 7400 Series	VOSS 8.2

**Table 155: Zero Touch Fabric Configuration product support**

Feature	Product	Release introduced
Zero Touch Fabric Configuration	5320 Series	Fabric Engine 8.6
	5420 Series	VOSS 8.4
	5520 Series	VOSS 8.2.5
	5720 Series	Fabric Engine 8.7
	7520 Series	Fabric Engine 8.10
	7720 Series	Fabric Engine 8.10
	VSP 4900 Series	VOSS 8.1
	VSP 7400 Series	VOSS 8.0.5

**Table 155: Zero Touch Fabric Configuration product support (continued)**

Feature	Product	Release introduced
LLDP Fabric Connect TLV	5320 Series	Fabric Engine 8.6
	5420 Series	VOSS 8.4
	5520 Series	VOSS 8.2.5
	5720 Series	Fabric Engine 8.7
	7520 Series	Fabric Engine 8.10
	7720 Series	Fabric Engine 8.10
	VSP 4900 Series	VOSS 8.3
	VSP 7400 Series	VOSS 8.3

**Table 156: Zero Touch Provisioning Plus product support**

Feature	Product	Release introduced
Zero Touch Provisioning Plus	5320 Series	Fabric Engine 8.6
	5420 Series	VOSS 8.4
	5520 Series	VOSS 8.2.5
	5720 Series	Fabric Engine 8.7
	7520 Series	Fabric Engine 8.10
	7720 Series	Fabric Engine 8.10
	VSP 4900 Series	VOSS 8.2.5
	VSP 7400 Series	VOSS 8.2.5