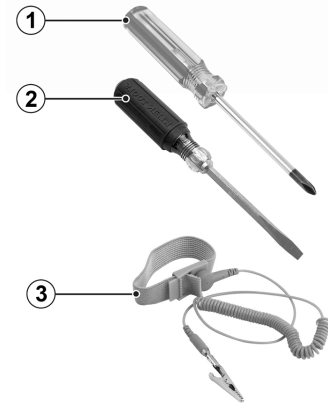


VX-RPS-1000 Redundant Power Supply: Quick Reference

Follow these steps to get your redundant power supply up and running.

Tools You'll Need

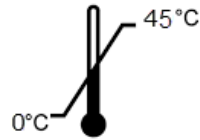


- #1 Phillips screwdriver (magnetic screwdriver recommended)
- Flat-head screwdriver
- ESD (Electrostatic Discharge) wrist strap

1 Prepare the Site

The installation site must meet the following requirements:

- Appropriate grounded power receptacles located within 1.8 m (6 ft.)
- A readily accessible device for disconnecting power, such as a breaker or master switch
- Network cabling within reach
- At least of 7.6 cm (3.0 in.) on all sides, for proper ventilation
- Temperature between 0°C (32°F) and 45°C (113°F) with fluctuations of less than 10°C (18°F) per hour



2 Unpack the Box

Remove the packing material. Break the tape seal on the non-conductive bag and remove the power supply.

If the VX-RPS-1000 redundant power supply appears to be damaged, contact Extreme Networks. See "Getting Help" for more information. Extreme Networks does not include power input cords with this product. To purchase the correct power cord for your country, refer to www.extremenetworks.com/product/powercords/. This page lists details for purchasing a power cord from Extreme Networks or from your local supplier.

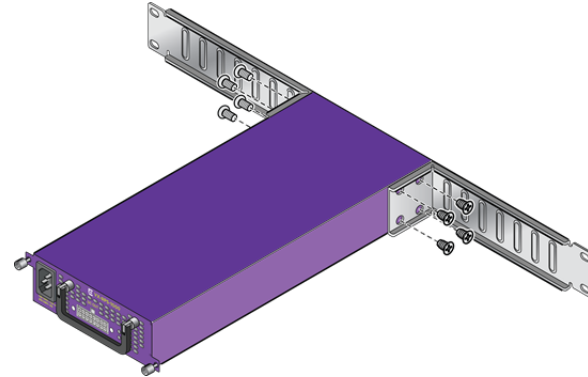
3 Install the Power Supply

You can install the VX-RPS-1000 redundant power supply in a standard 19-inch equipment rack. Use the long mounting brackets provided with the power supply, or use the 3-Slot Modular Shelf (part no. 18201).

Using the Long Mounting Brackets

- Use screws (provided) to attach a long bracket to one side of the power supply. Use the holes closest to the rear of the power supply.
- Attach the other bracket to the other side of the power supply.

Figure 1 Attaching Long Brackets to the Power Supply

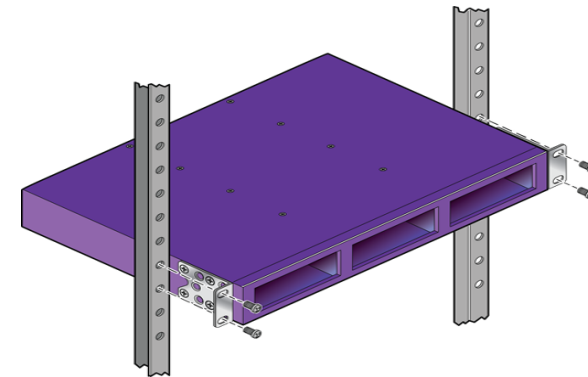


- Align the holes at the end of each bracket with the rack post holes.
- Secure the power supply to the rack with rack-mounting screws.
- Attach power cables from the power supply to the V400 Virtual Port Extender and to the external power source, as described in "Connect Power".

Using the 3-Slot Modular Shelf

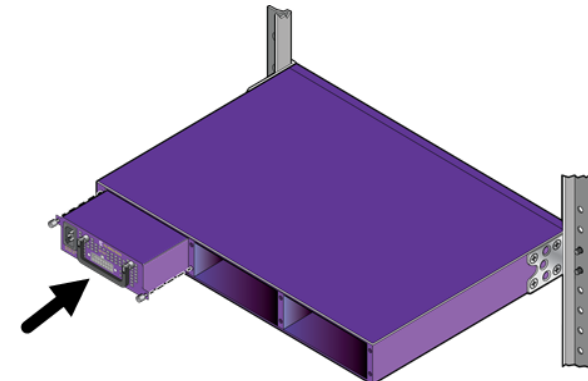
- Attach mounting brackets to the shelf, following the instructions included in the shelf packaging.
- Attach the shelf to the rack.

Figure 2 Attaching the Shelf to a Rack



- Slide the power supply into an empty bay in the shelf.

Figure 3 Sliding the Power Supply into the Shelf



- Attach power cables from the power supply to the V400 Virtual Port Extender and to the external power source, as described in "Connect Power".
- Secure the power supply to the shelf using two captive screws on the front panel of the power supply.
- Optionally, install additional power supplies on the shelf - up to three in all.

4 Connect Power

The VX-RPS-1000 redundant power supply is designed to provide power to the V400 Virtual Port Extender (PoE models).



Note: Installing the system as described in this guide meets the protective earth grounding requirements of the National Electrical Code (NEC), UL/CSA/IEC/EN 60950-1 standards. However, in some cases, it may be necessary to use an alternative grounding method. In these cases, a 14 AWG wire can be connected between the grounding lug on the chassis and a nearby building ground point.

Connecting the Power Supply to the Port Extender

To attach the VX-RPS-1000 redundant power supply to your V400 Virtual Port Extender, connect a power cable (included with the power supply) to the output socket on the power supply and the RPS input connector on the rear of the V400 unit.

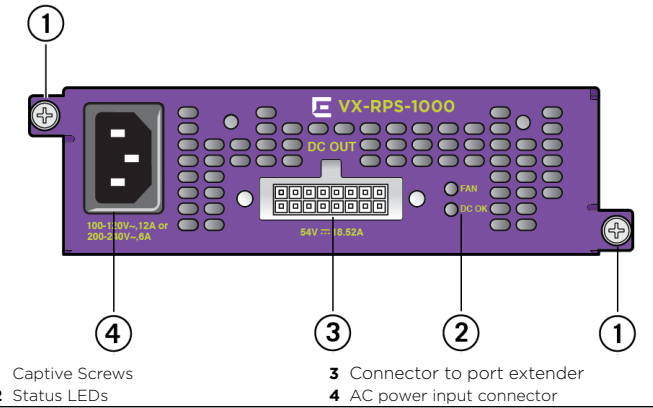
Connecting the Power Supply to the Power Source

To attach the VX-RPS-1000 redundant power supply to external power, connect an AC power cord (not included) to the AC power input socket on the power supply and to an AC power outlet.

When power is connected, verify that the power supply's DC OK LED turns green. Verify that the port extender's PWR LED turns green.

Hardware Components

Figure 4 VX-RPS-1000 Redundant Power Supply (Front View)



For component details, see the *Hardware Installation Guide*.

LEDs

Table 1 describes the different states of the DC OK LED on the VX-RPS-1000 redundant power supply.

Table 1 Power Supply LED Status Definitions

LED	LED Color	Status
DC OK	Green	DC input is within the operational range.
	Off	No DC voltage or DC voltage is outside the operational range.

Operating Conditions

Operating Temperature:
0°C (32°F) to 45°C (113°F)

Storage Temperature:
-40°C to 70°C (-40°F to 158°F)

Operating Relative Humidity:
5% to 90% (non-condensing)

Power Specifications

VX-RPS-1000 (Part no. 18202)	AC Input: 100-120 VAC, 50-60Hz, 12A max or AC Input: 200-240 VAC, 50-60Hz, 6A max DC Output: +54.0VDC, 18.52A max
------------------------------	---

Safety Notices



Electrical Hazard: Only qualified personnel should perform installation procedures.

Risques d'électrocution: Seul un personnel qualifié doit effectuer les procédures d'installation.



Warning: Extreme Networks power supplies do not have switches for turning the unit on and off. Before servicing, disconnect all power cords to remove power from the device. Make sure that these connections are easily accessible.
Avertissement: Extreme Networks alimentations ne sont pas des interrupteurs pour allumer l'appareil et en dehors. Avant l'entretien, débranchez tous les cordons d'alimentation pour couper l'alimentation de l'appareil. Assurez-vous que ces connexions sont facilement accessibles.



Warning: A dedicated Listed circuit breaker rated at 15A is to be used for each power supply connection.
Avertissement: Un disjoncteur cotée dédiée évalué à 15A doit être utilisée pour chaque connexion d'alimentation.



Caution: Before mounting the device, ensure that the rack can support it without compromising stability. Otherwise, personal injury and/or equipment damage may result.



Caution: Follow appropriate ESD procedures when unpacking and handling the device. These include unpacking the device in an ESD-safe environment and wearing appropriate ESD protective gear, such as ESD-safe footwear and ESD wrist straps where appropriate.

Getting Help

For additional support related to VX-RPS-1000 power supplies or this document, contact Extreme Networks using one of the following methods:

Product Documentation	https://www.extremenetworks.com/documentation/
Global Technical Assistance Center (GTAC)	Phone: 1-800-998-2408 (toll-free in U.S. and Canada) or +1-408-579-2826. For the support phone number in your country, visit: http://www.extremenetworks.com/support/contact/
GTAC Knowledge	Get on-demand and tested resolutions from the GTAC Knowledgebase, or create a help case if you need more guidance. Visit: https://gtacknowledge.extremenetworks.com/
The Hub	A forum for Extreme customers to connect with one another, get questions answered, share ideas and feedback, and get problems solved. The community is monitored by Extreme Networks employees, but is not intended to replace specific guidance from GTAC. Visit: https://community.extremenetworks.com
Support Portal	Manage cases, downloads, service contracts, product licensing, and training and certifications. Visit: http://support.extremenetworks.com/

Notice

Copyright © 2017 Extreme Networks, Inc. All Rights Reserved.

Legal Notices

Extreme Networks, Inc. reserves the right to make changes in specifications and other information contained in this document and its website without prior notice. The reader should in all cases consult representatives of Extreme Networks to determine whether any such changes have been made.

The hardware, firmware, software or any specifications described or referred to in this document are subject to change without notice.

Trademarks

Extreme Networks and the Extreme Networks logo are trademarks or registered trademarks of Extreme Networks, Inc. in the United States and/or other countries.

All other names (including any product names) mentioned in this document are the property of their respective owners and may be trademarks or registered trademarks of their respective companies/owners.

For additional information on Extreme Networks trademarks, please see:

www.extremenetworks.com/company/legal/trademarks/

Warranty

Warranty information for RPS-1000 power supplies is located online at:

www.extremenetworks.com/support/policies/

Regulatory and Compliance Information

Federal Communications Commission (FCC) Notice

This device complies with Part 15 of the FCC rules. Operation is subject to the following two conditions: (1) this device may not cause harmful interference, and (2) this device must accept any interference received, including interference that may cause undesired operation.

NOTE: This equipment has been tested and found to comply with the limits for a class A digital device, pursuant to Part 15 of the FCC rules. These limits are designed to provide reasonable protection against harmful interference when the equipment is operated in a commercial environment. This equipment uses, generates, and can radiate radio frequency energy and if not installed in accordance with the operator's manual, may cause harmful interference to radio communications. Operation of this equipment in a residential area is likely to cause interference in which case the user will be required to correct the interference at his own expense.

WARNING: Changes or modifications made to this device which are not expressly approved by the party responsible for compliance could void the user's authority to operate the equipment.

Industry Canada Notice CAN ICES-3 (A)/NMB-3(A)

This digital apparatus does not exceed the class A limits for radio noise emissions from digital apparatus set out in the Radio Interference Regulations of the Canadian Department of Communications.

Le présent appareil numérique n'émet pas de bruits radioélectriques dépassant les limites applicables aux appareils numériques de la class A prescrites dans le Règlement sur le brouillage radioélectrique édicté par le ministère des Communications du Canada.

Class A ITE Notice

WARNING: This is a Class A product. In a domestic environment this product may cause radio interference in which case the user may be required to take adequate measures.

Product Safety

This product complies with the following international safety standards:

- UL 60950-1 2nd edition, A2:2014
- CAN/CSA-C22.2 No.60950-1-07 2nd Ed. 2014-10
- IEC 60950-1:2005 2nd+A1:2009+A2:2013
- EN 60950-1:2006+A11+A1+A12+A2
- 2014/35/EU
- CNS 14336-1

Korea EMC Statement

이 기기는 업무용 환경에서 사용할 목적으로 적
합성평가를 받은 기기로서 가정용 환경에서 사
용하는 경우 전파간섭의 우려가 있습니다.

Australia (RCM)

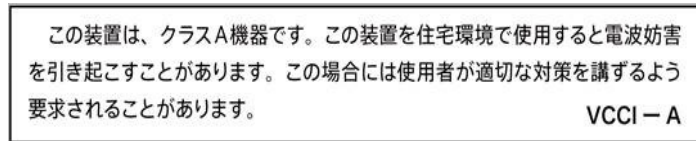
WARNING: This equipment is compliant with Class A of CISPR 32. In a residential environment this equipment may cause radio interference.

Electromagnetic Compatibility (EMC)

This product complies with the following: FCC 47 CFR Part 15 Subpart B Class A (US), ICES-003 (Canada), EN 55032 (ITE Emissions), EN 55024 (ITE Immunity), EN 61000-3-2 (Harmonics), EN 61000-3-3 (Flicker), 2014/30/EU (EMC Directive), EN 300 386 (Telecom), EN 55011 (ISM), EN 61000-6-2 (Ind. Immunity), EN 61000-6-4 (Ind. Emissions), RCM (Australia), VCCI (Japan), MSIP KCC (Korea), BSMI (Taiwan), ANATEL (Brazil), CCC (China).

VCCI Notice

This is a Class A product based on the standard of the Voluntary Control Council for Interference by Information Technology Equipment (VCCI). If this equipment is used in a domestic environment, radio disturbance may arise. When such trouble occurs, the user may be required to take corrective actions.



BSMI EMC Statement — Taiwan

This is a Class A product. In a domestic environment this product may cause radio interference in which case the user may be required to take adequate measures.

警告使用者:

此為甲類資訊技術設備，於居住環境中使用時，可能會造成射頻

擾動，在此種情況下，使用者會被要求採取某些適當的對策。

Taiwan BSMI 報關義務人

申請人: 香港商極進網路有限公司台灣分公司

地址: 臺北市松山區復勢里南京東路 4 段 126 號 5 樓

警告使用者:

此为A级产品，在生活环境中，该产品可能会造成无线电干扰。

在这种情况下，可能需要用户对干扰采取切实可行的措施。

Hazardous Substances- China and Taiwan BSMI RoHS

Guidance concerning the China and Taiwan BSMI RoHS (Restriction of Hazardous Substances) directive for this Extreme Networks® product can be found on the following web page:

www.extremenetworks.com/support/documentation/restriction-hazardous-substances/

The page contains tables detailing the presence of 10 substances defined by the RoHS directive.

Hazardous Substances- EU

This product complies with the requirements of Directive 2011/65/EU of the European Parliament and of the Council of 8 June 2011 on the restriction of the use of certain hazardous substances in electrical and electronic equipment.

European Waste Electrical and Electronic Equipment (WEEE)

Notice



In accordance with Directive 2012/19/EU of the European Parliament on waste electrical and electronic equipment (WEEE):

- 1 The symbol above indicates that separate collection of electrical and electronic equipment is required.
- 2 When this product has reached the end of its serviceable life, it cannot be disposed of as unsorted municipal waste. It must be collected and treated separately.
- 3 It has been determined by the European Parliament that there are potential negative effects on the environment and human health as a result of the presence of hazardous substances in electrical and electronic equipment.
- 4 It is the users' responsibility to utilize the available collection system to ensure WEEE is properly treated. For information about the available collection system, please contact Extreme Customer Support at +353 61 705500 (Ireland).

Extreme Networks

VX-RPS-1000 Redundant Power Supply

Part Number 18202

Quick Reference

For use with ExtremeSwitching V400 Virtual Port Extender