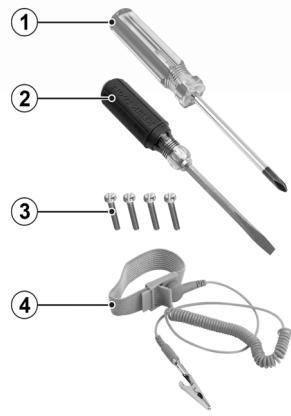


210 and 220 Series Switch Quick Reference

Follow these steps to get your switch up and running.

For complete installation instructions see the *ExtremeSwitching 210 and 220 Series Hardware Installation Guide* at www.extremenetworks.com/documentation

Tools You'll Need

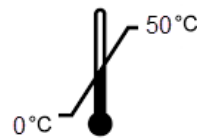


- 1 #1 Phillips screwdriver (magnetic screwdriver recommended)
- 2 Flat-head screwdriver
- 3 Rack-mounting screws
- 4 ESD-protective wrist strap

1 Prepare the Site

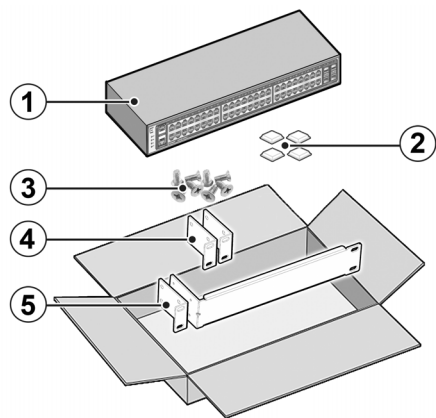
The installation site must meet the following requirements:

- Appropriate grounded power receptacles located within 1.8 m (6 ft.)
- A readily accessible device for disconnecting power, such as a breaker or master switch
- Network cabling within reach
- At least of 7.6 cm (3.0 in.) on all sides, for proper ventilation
- Temperature between 0°C (32°F) and 50°C (122°F) with fluctuations of less than 10°C (18°F) per hour



2 Unpack the Box

Remove the packing material. Break the tape seal on the non-conductive bag and remove the switch.



- 1 Switch (48-port model shown)
- 2 Rubber feet
- 3 Bracket screws
- 4 Mounting brackets (24 and 48-port models)
- 5 Mounting brackets (12-port models)

Note: Mounting hardware for 12-port dual-rack mount and wall mount is available separately.

If the switch appears to be damaged, contact Extreme Networks. See "Getting Help" for more information.

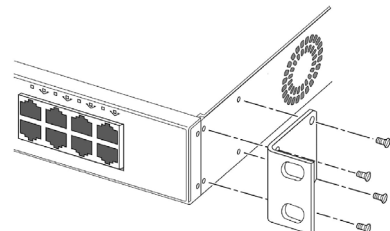
3 Install the Switch

You can install any 210 or 220 switch in a rack. 12-port models can also be mounted on a wall.

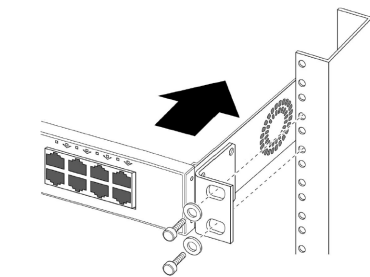
Rack Mounting

For most models, there are four ways to mount the switch in a rack:

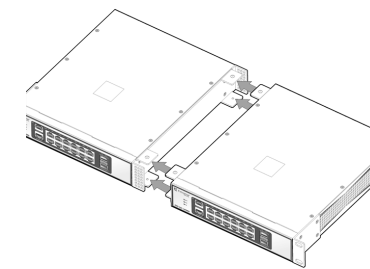
- Either the I/O ports or the power-supply side can face front.
 - The switch can be mounted flush with the rack posts or mid-mounted.
- 1 Attach the mounting brackets to the sides of the switch using four screws (included) for each bracket.



- 2 Align the holes in the brackets with the rack post holes.
- 3 Secure the switch to each post with fasteners appropriate to the rack.



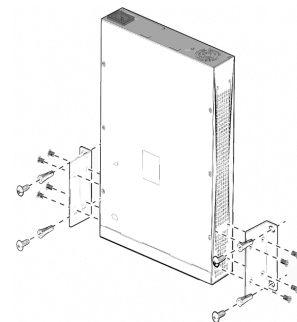
12-port models can be mounted side-by-side in a rack, as shown below, using the 200-Series Dual Rack Mount Kit (part no. 16572). For details and instructions, see the *ExtremeSwitching 210 and 220 Series Hardware Installation Guide*.



Wall Mounting

12-port models can be mounted on a wall, as shown below, using the 200-Series Wall Mount Kit (part no. 16573).

- 1 Attach the mounting brackets to the sides of the switch using four screws (included) for each bracket. See Step 1 in "Rack Mounting".
- 2 Using the two holes in each wall mounting bracket, mark the places on the wall where the switch will be mounted.
- 3 At each mark, drill a hole and insert a hollow anchor (included).
- 4 With the I/O ports facing down, mount the switch assembly by screwing anchor screws (included) through the bracket holes into the anchors.



4 Install Transceivers

(Optional) Transceivers can send and receive data over optical fiber rather than through electrical wires. This installation procedure applies to all transceivers.

Note: Transceivers are Class 1M laser devices.

- 1 Attach the ESD wrist strap to your wrist and connect the metal end to an appropriate ground point on the rack.
- 2 Remove the transceiver from its packaging.
- 3 If applicable, remove the protective dust cover from the connector.
- 4 Hold the transceiver so that the connector will seat properly.
- 5 Carefully align the transceiver with the port slot.
- 6 Push the transceiver into the port slot until it clicks into place.

5 Connect Power

Connect the switch to a single, primary source of power.

Note: In most locales, a power cord is included with your switch. If you need to purchase the correct power cord for your country, refer to www.extremenetworks.com/product/powercords/.

- 1 Connect an AC power cord to the switch's AC power input socket.
- 2 Connect the other end of the cord to an AC power source.
- 3 When power is connected, verify that the switch's PW LED turns green. If the PW LED does not turn green, refer to the *Hardware Installation Guide* for troubleshooting.

The 24- and 48-port 220 series models can be connected to a second power source for redundancy. See the *Hardware Installation Guide* for instructions.

6 Configure the Switch

To connect the switch to the network and configure it for use, follow the steps in www.extrconfig.com/fastpath.

Safety Notices

Electrical Hazard: Only qualified personnel should perform installation procedures.
Risques d'électrocution: Seul un personnel qualifié doit effectuer les procédures d'installation.

Warning: Extreme Networks power supplies do not have switches for turning the unit on and off. Before servicing, disconnect all power cords to remove power from the device. Make sure that these connections are easily accessible.
Avertissement: Extreme Networks alimentations ne sont pas des interrupteurs pour allumer l'appareil et en dehors. Avant l'entretien, débranchez tous les cordons d'alimentation pour couper l'alimentation de l'appareil. Assurez-vous que ces connexions sont facilement accessibles.

Warning: A dedicated Listed circuit breaker rated at 15A is to be used for each power supply connection.
Avertissement: Un disjoncteur cotée dédiée évalué à 15A doit être utilisée pour chaque connexion d'alimentation.

Caution: Before mounting the device, ensure that the rack or wall can support it without compromising stability. Otherwise, personal injury and/or equipment damage may result.

Caution: Follow appropriate ESD procedures when unpacking and handling the switch. These include unpacking the switch in an ESD-safe environment and wearing appropriate ESD protective gear, such as ESD-safe footwear and ESD wrist straps where appropriate.

Warning: LASER RADIATION
 Fiber-optic ports use Class 1 or Class 1M lasers. DO NOT EXPOSE USERS OF TELESCOPIC OPTICS
 Do not use optical instruments to view the laser output. The use of optical instruments to view laser output increases eye hazard. Use only UL/CSA, EN60825-1/-2 recognized pluggable modules.

Avertissement: RAYONNEMENT LASER
 Ports de fibres optiques utilisent des lasers de classe 1 ou de classe 1M.
 NE PAS exposer les utilisateurs de télescopique OPTIQUE.
 Ne pas utiliser d'instruments optiques pour voir la sortie du laser. L'utilisation de instruments optiques pour afficher la sortie laser augmente les risques oculaires. Utilisez uniquement UL / CSA, EN60825-1 /-2 reconnu modules enfilables.

Hardware Components

Figure 1 210 or 220 Switch: Sample Front Panel

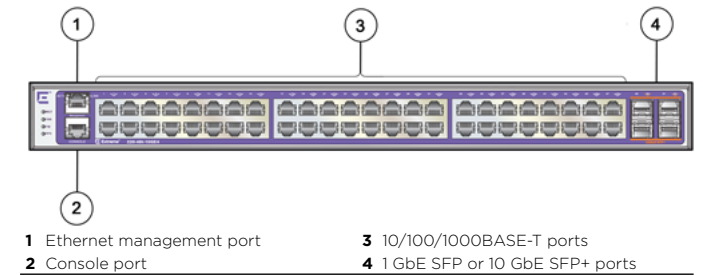
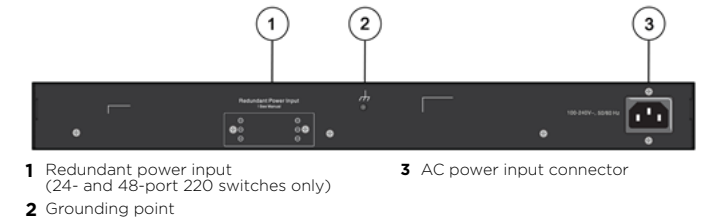


Figure 2 210 or 220 Switch: Sample Rear Panel



See the *Hardware Installation Guide* for component details.

Operating Conditions

Operating Temperature:
 0°C (32°F) to 50°C (122°F)

Storage Temperature:
 -40°C to 70°C (-40°F to 158°F)

Operating Relative Humidity:
 10% to 95% (non-condensing)

Power Specifications

210-12t-GE2 (P/N 16566)	AC Input: 100-240 VAC, 0.5 A max., 50/60 Hz
210-12p-GE2 (P/N 16567)	AC Input: 100-240 VAC, 1.8 A max., 50/60 Hz
210-24t-GE2 (P/N 16568)	AC Input: 100-240 VAC, 0.5 A max., 50/60 Hz
210-24p-GE2 (P/N 16569)	AC Input: 100-240 VAC, 2.6 A max., 50/60 Hz
210-48t-GE4 (P/N 16570)	AC Input: 100-240 VAC, 0.9 A max., 50/60 Hz
210-48p-GE4 (P/N 16571)	AC Input: 100-240 VAC, 5.5 A max., 50/60 Hz
220-12t-10GE2 (P/N 16560)	AC Input: 100-240 VAC, 0.5 A max., 50/60 Hz
220-12p-10GE2 (P/N 16561)	AC Input: 100-240 VAC, 1.8 A max., 50/60 Hz
220-24t-10GE2 (P/N 16562)	AC Input: 100-240 VAC, 0.5 A max., 50/60 Hz
220-24p-10GE2 (P/N 16563)	AC Input: 100-240 VAC, 2.6 A max., 50/60 Hz
220-48t-10GE4 (P/N 16564)	AC Input: 100-240 VAC, 0.9 A max., 50/60 Hz
220-48p-10GE4 (P/N 16565)	AC Input: 100-240 VAC, 5.5 A max., 50/60 Hz
RPS-150XT Redundant Power Supply (P/N 10932)	AC Input: 100-240 VAC, 2 A max., 50/60 Hz DC Output: +12.0 VDC, 13 A max.
RPS-500p Redundant Power Supply (P/N 10923)	AC Input: 100-240 VAC, 8 A max., 50/60 Hz DC Output: -54 VDC, 7.8 A max.; +12.0 VDC, 14.0 A max.

Getting Help

For additional support related to 210 and 220 series switches or this document, contact Extreme Networks using one of the following methods:

Product Documentation	https://www.extremenetworks.com/documentation/
Global Technical Assistance Center (GTAC)	Phone: 1-800-998-2408 (toll-free in U.S. and Canada) or +1-408-579-2826. For the support phone number in your country, visit: http://www.extremenetworks.com/support/contact/
GTAC Knowledge	Get on-demand and tested resolutions from the GTAC Knowledgebase, or create a help case if you need more guidance. Visit: https://gtacknowledge.extremenetworks.com/
The Hub	A forum for Extreme customers to connect with one another, get questions answered, share ideas and feedback, and get problems solved. The community is monitored by Extreme Networks employees, but is not intended to replace specific guidance from GTAC. Visit: https://community.extremenetworks.com
Support Portal	Manage cases, downloads, service contracts, product licensing, and training and certifications. Visit: http://support.extremenetworks.com/

Notice

Copyright © 2017 Extreme Networks, Inc. All Rights Reserved.

Legal Notices

Extreme Networks, Inc. reserves the right to make changes in specifications and other information contained in this document and its website without prior notice. The reader should in all cases consult representatives of Extreme Networks to determine whether any such changes have been made.

The hardware, firmware, software or any specifications described or referred to in this document are subject to change without notice.

Trademarks

Extreme Networks and the Extreme Networks logo are trademarks or registered trademarks of Extreme Networks, Inc. in the United States and/or other countries.

All other names (including any product names) mentioned in this document are the property of their respective owners and may be trademarks or registered trademarks of their respective companies/owners. For additional information on Extreme Networks trademarks, please see: www.extremenetworks.com/company/legal/trademarks/

Warranty

Warranty information for 210 and 220 series switches is located online at: www.extremenetworks.com/support/policies/

Support

For product support, including documentation, visit: www.extremenetworks.com/support/

Contact

Extreme Networks, Inc.
6480 Via Del Oro
San Jose, CA 95119 USA
Tel: +1 408-579-2800
Toll-free: +1 888-257-3000

Regulatory and Compliance Information

Federal Communications Commission (FCC) Notice

This device complies with Part 15 of the FCC rules. Operation is subject to the following two conditions: (1) this device may not cause harmful interference, and (2) this device must accept any interference received, including interference that may cause undesired operation.

NOTE: This equipment has been tested and found to comply with the limits for a class A digital device, pursuant to Part 15 of the FCC rules. These limits are designed to provide reasonable protection against harmful interference when the equipment is operated in a commercial environment. This equipment uses, generates, and can radiate radio frequency energy and if not installed in accordance with the operator's manual, may cause harmful interference to radio communications. Operation of this equipment in a residential area is likely to cause interference in which case the user will be required to correct the interference at his own expense.

WARNING: Changes or modifications made to this device which are not expressly approved by the party responsible for compliance could void the user's authority to operate the equipment.

Industry Canada Notice CAN ICES-3 (A)/NMB-3(A)

This digital apparatus does not exceed the class A limits for radio noise emissions from digital apparatus set out in the Radio Interference Regulations of the Canadian Department of Communications.

Le présent appareil numérique n'émet pas de bruits radioélectriques dépassant les limites applicables aux appareils numériques de la class A prescrites dans le Règlement sur le brouillage radioélectrique édicté par le ministère des Communications du Canada.

Class A ITE Notice

WARNING: This equipment is compliant with Class A of CISPR 32. In a residential environment this equipment may cause radio interference.

Product Safety

This product complies with the following international safety standards:

- UL 60950-1 2nd edition, A2:2014
- CAN/CSA-C22.2 No.60950-1-07 2nd Ed. 2014-10
- IEC 60950-1:2005 2nd+A1:2009+A2:2013
- EN 60950-1:2006+A11+A1+A12+A2
- 2014/35/EU
- CNS 14336-1

Optical Module Compliance

Extreme Networks pluggable optical modules and direct-attach cables meet the following regulatory requirements:

- UL and/or CSA registered component for North America
- Class 1 or Class 1M Laser Product
- FCC 21 CFR Chapter 1, Sub-chapter J in accordance with FDA & CDRH requirements
- EN 60825-1:2007, EN 60825-2:2004+A1+A2 or later, European Standard
- Application of CE Mark in accordance with 2014/30/EU EMC Directive and 2014/35/EU Low Voltage Directive
- 47 CFR Part 15, Class A when installed into Extreme products

Korea EMC Statement

이 기기는 업무용 환경에서 사용할 목적으로 적
합성평가를 받은 기기로서 가정용 환경에서 사
용하는 경우 전파간섭의 우려가 있습니다.

Australia (RCM)

WARNING: This equipment is compliant with Class A of CISPR 32. In a residential environment this equipment may cause radio interference.

Electromagnetic Compatibility (EMC)

This product complies with the following: FCC 47 CFR Part 15 Subpart B Class A (US), ICES-003 (Canada), EN 55032 (ITE Emissions), EN 55024 (ITE Immunity), EN 61000-3-2 (Harmonics), EN 61000-3-3 (Flicker), 2014/30/EU (EMC Directive), EN 300 386 (Telecom), RCM (Australia), VCCI (Japan), MSIP KCC (Korea), BSMI (Taiwan), ANATEL (Brazil), CCC (China).

VCCI Notice

This is a Class A product based on the standard of the Voluntary Control Council for Interference by Information Technology Equipment (VCCI). If this equipment is used in a domestic environment, radio disturbance may arise. When such trouble occurs, the user may be required to take corrective actions.

この装置は、クラスA情報技術装置です。この装置を家庭環境で使用すると電波妨害を引き起こすことがあります。この場合には使用者が適切な対策を講ずるよう要求されることがあります。 VCCI-A

BSMI EMC Statement — Taiwan

This is a Class A product. In a domestic environment this product may cause radio interference in which case the user may be required to take adequate measures.

警告使用者:
此為甲類資訊技術設備，於居住環境中使用時，可能會造成射頻擾動，在此種情況下，使用者會被要求採取某些適當的對策。

警告: 此为 A 级产品，在生活环境中，该产品可能会造成

无线电干扰。在这种情况下，可能需要用户对干扰

采取切实可行的措施。

Battery Warning — Taiwan

警告

如果更換不正確之電池型式會有爆炸的風險，

請依製造商說明書處理用過之電池。

Battery Notice



Warning: This product contains a battery used to maintain product information. If the battery should need replacement it must be replaced by Service Personnel. Please contact Technical Support for assistance.

Risk of explosion if battery is replaced by an incorrect type. Dispose of expended battery in accordance with local disposal regulations. **Avertissement:** Ce produit renferme une pile servant à conserver les renseignements sur le produit. Le cas échéant, faites remplacer la pile par le personnel du service de réparation. Veuillez communiquer avec l'assistance technique pour du soutien.

Il y a risque d'explosion si la pile est remplacée par un type de pile incorrect. Éliminez les piles usées en conformité aux règlements locaux d'élimination des piles.

产品说明书附件

SUPPLEMENT TO PRODUCT INSTRUCTIONS

部件名称 (Parts)	有毒有害物质或元素 (Hazardous Substance)					
	铅 (Pb)	汞 (Hg)	镉 (Cd)	六价铬 (Cr ⁶⁺)	多溴联苯 (PBB)	多溴二苯醚 (PBDE)
金属部件 (Metal Parts)	×	○	○	○	○	○
电路模块 (Circuit Modules)	×	○	○	○	○	○
电缆及电缆组件 (Cables & Cable Assemblies)	○	○	○	○	○	○
电源适配器/电源供应器 (Power Adapter/Power Supply)	×	○	○	○	○	○

○: 表示该有毒有害物质在该部件所有均质材料中的含量均在 SJ/T 11363-2006 标准规定的限量要求以下。
Indicates that the concentration of the hazardous substance in all homogeneous materials in the parts is below the relevant threshold of the SJ/T 11363-2006 standard.

×: 表示该有毒有害物质至少在该部件的某一均质材料中的含量超出 SJ/T 11363-2006 标准规定的限量要求。
Indicates that the concentration of the hazardous substance of at least one of all homogeneous materials in the parts is above the relevant threshold of the SJ/T 11363-2006 standard.

对销售之目的所售产品, 本表显示, 极进供应链的电子产品信息可能包含这些物质。注意: 在所售产品中可能会也可能不会含有所有列出的部件。
This table shows where these substances may be found in the supply chain of Extreme electronic information products, as of the date of sale of the enclosed product. Note that some of the component types listed above may or may not be a part of the enclosed product.

除非另外特别的标注, 此标志为针对所涉及产品的环保使用期标志。某些零部件会有一个不同的环保使用期(例如, 电池单元模块)贴在其产品上。
此环保使用期限只适用于产品是在产品手册中所规定的条件下工作。
The Environmentally Friendly Use Period (EFUP) for all enclosed products and their parts are per the symbol shown here, unless otherwise marked. Certain parts may have a different EFUP (for example, battery modules) and so are marked to reflect such. The Environmentally Friendly Use Period is valid only when the product is operated under the conditions defined in the product manual.



Hazardous Substances

This product complies with the requirements of Directive 2011/65/EU of the European Parliament and of the Council of 8 June 2011 on the restriction of the use of certain hazardous substances in electrical and electronic equipment.

European Waste Electrical and Electronic Equipment (WEEE) Notice



In accordance with Directive 2012/19/EU of the European Parliament on waste electrical and electronic equipment (WEEE):

- The symbol above indicates that separate collection of electrical and electronic equipment is required.
- When this product has reached the end of its serviceable life, it cannot be disposed of as unsorted municipal waste. It must be collected and treated separately.
- It has been determined by the European Parliament that there are potential negative effects on the environment and human health as a result of the presence of hazardous substances in electrical and electronic equipment.
- It is the users' responsibility to utilize the available collection system to ensure WEEE is properly treated. For information about the available collection system, please contact Extreme Customer Support at +353 61 705500 (Ireland).

Extreme Networks

ExtremeSwitching 210 and 220 Series Switches

Quick Reference

210-12t-GE2
210-12p-GE2
210-24t-GE2
210-24p-GE2
210-48t-GE4
210-48p-GE4
220-12t-10GE2
220-12p-10GE2
220-24t-10GE2
220-24p-10GE2
220-48t-10GE4
220-48p-10GE4