



# Fabric Engine and VOSS Version 9.4 Feature Matrix

Configuration and Compatibility

9039512-00 Rev AA  
April 2026



Copyright © 2026 Extreme Networks, Inc.

## Legal Notice

Extreme Networks, Inc. reserves the right to make changes in specifications and other information contained in this document and its website without prior notice. The reader should in all cases consult representatives of Extreme Networks to determine whether any such changes have been made.

The hardware, firmware, software or any specifications described or referred to in this document are subject to change without notice.

## Trademarks

Extreme Networks and the Extreme Networks logo are trademarks or registered trademarks of Extreme Networks, Inc. in the United States and/or other countries.

All other names (including any product names) mentioned in this document are the property of their respective owners and may be trademarks or registered trademarks of their respective companies/owners.

For additional information on Extreme Networks trademarks, see: <https://www.extremenetworks.com/about-extreme-networks/company/legal/trademarks>

## Open Source Declarations

Some software files have been licensed under certain open source or third-party licenses.

End-user license agreements and open source declarations can be found at: <https://www.extremenetworks.com/support/policies/open-source-declaration/>



# Table of Contents

---

- Abstract..... 4**
- Preface..... 5**
  - Purpose..... 5
  - How to Use This Document..... 6
  - Documentation and Training..... 6
    - Open Source Declarations..... 6
    - Training..... 6
  - Help and Support..... 7
    - Subscribe to Product Announcements..... 7
  - Send Feedback..... 8
- Document Revision Changes.....9**
- Features A to C..... 10**
- Features D to F.....36**
- Features G to I..... 73**
- Features J to L.....94**
- Features M to O..... 103**
- Features P to R..... 120**
- Features S to U..... 138**
- Features V to X..... 159**
- Features Y and Z.....168**



# Abstract

---

This Feature Matrix document for Fabric Engine and VOSS version 9.4 provides a comprehensive overview of the supported features across various ExtremeSwitching and Virtual Services Platform (VSP) product families. It details the introduction of specific functionalities, feature compatibility, and support conditions for different hardware models. The document is structured alphabetically by feature and includes information on which software release first introduced support for each feature. It also highlights exceptions, restrictions, and hardware capabilities related to the implementation of these features. The matrix serves as a reference to determine feature availability on specific products.



# Preface

---

[Purpose](#) on page 5  
[Documentation and Training](#) on page 6  
[Help and Support](#) on page 7  
[Send Feedback](#) on page 8

Read the following topics to learn about:

- The meanings of text formats used in this document.
- Where you can find additional information and help.
- How to reach us with questions and comments.

## Purpose

---

This document provides information on features in Extreme Networks Fabric Engine™ and VSP Operating System Software (VOSS).

This release of Fabric Engine runs on the following product families:

- ExtremeSwitching 4220 Series
- ExtremeSwitching 5320 Series
- ExtremeSwitching 5420 Series
- ExtremeSwitching 5520 Series
- ExtremeSwitching 5720 Series
- ExtremeSwitching 7520 Series
- ExtremeSwitching 7720 Series
- ExtremeSwitching 7830 Series



### Note

Prior to Fabric Engine 8.6, 5520 Series and 5420 Series platforms ran VOSS. VOSS support ends for these platforms with VOSS 8.5.x. Unless otherwise noted, feature support introduced in earlier VOSS releases is also available in Fabric Engine releases.

This release of VOSS runs on the following product families:

- ExtremeSwitching VSP 4900 Series
- ExtremeSwitching VSP 7400 Series

## How to Use This Document

This document identifies the release that first introduced feature support on a hardware product. Each new release includes all the features from previous releases unless specifically stated otherwise. Use this document to determine if features are supported on your product.



### Note

Different models within a product family can be introduced in different software releases. The tables in this document include the earliest release number. To understand which release is the minimum software release for each model, see the Network Operating System (NOS) Release Notes.

This document arranges the features alphabetically, based on how those features are included in the NOS User Guide. The tables in this document also appear in the conceptual feature content of the NOS User Guide.

The Release introduced column in the tables provides the following information:

- If the feature is supported, it indicates the Release the feature support was introduced.
- It indicates support exceptions within a product family. For example, if only 1 of 14 models does not support the feature, meaning the other 13 models do support the feature.
- It indicates if any of the models support the feature but with restrictions or conditions. For example, specific models only support the feature on specific ports.

This document distinguishes between hardware that is not capable of supporting a feature (Not Applicable) and hardware that is capable of supporting a feature but does not (Not Supported).

## Documentation and Training

Find Extreme Networks product information at the following locations:

[Current Product Documentation](#)

[Release Notes](#)

[Hardware and Software Compatibility](#) for Extreme Networks products

[Extreme Optics Compatibility](#)

[Other Resources](#) such as articles, white papers, and case studies

## Open Source Declarations

Some software files have been licensed under certain open source licenses. Information is available on the [Open Source Declaration](#) page.

## Training

Extreme Networks offers product training courses, both online and in person, as well as specialized certifications. For details, visit the [Extreme Networks Training](#) page.

---

## Help and Support

---

If you require assistance, contact Extreme Networks using one of the following methods:

### Extreme Portal

Search the GTAC (Global Technical Assistance Center) knowledge base; manage support cases and service contracts; download software; and obtain product licensing, training, and certifications.

### The Hub

A forum for Extreme Networks customers to connect with one another, answer questions, and share ideas and feedback. This community is monitored by Extreme Networks employees, but is not intended to replace specific guidance from GTAC.

### Call GTAC

For immediate support: (800) 998 2408 (toll-free in U.S. and Canada) or 1 (408) 579 2800. For the support phone number in your country, visit [www.extremenetworks.com/support/contact](http://www.extremenetworks.com/support/contact).

Before contacting Extreme Networks for technical support, have the following information ready:

- Your Extreme Networks service contract number, or serial numbers for all involved Extreme Networks products
- A description of the failure
- A description of any actions already taken to resolve the problem
- A description of your network environment (such as layout, cable type, other relevant environmental information)
- Network load at the time of trouble (if known)
- The device history (for example, if you have returned the device before, or if this is a recurring problem)
- Any related RMA (Return Material Authorization) numbers

## Subscribe to Product Announcements

You can subscribe to email notifications for product and software release announcements, Field Notices, and Vulnerability Notices.

1. Go to [The Hub](#).
2. In the list of categories, expand the **Product Announcements** list.
3. Select a product for which you would like to receive notifications.
4. Select **Subscribe**.
5. To select additional products, return to the **Product Announcements** list and repeat steps 3 and 4.

You can modify your product selections or unsubscribe at any time.

---

## Send Feedback

---

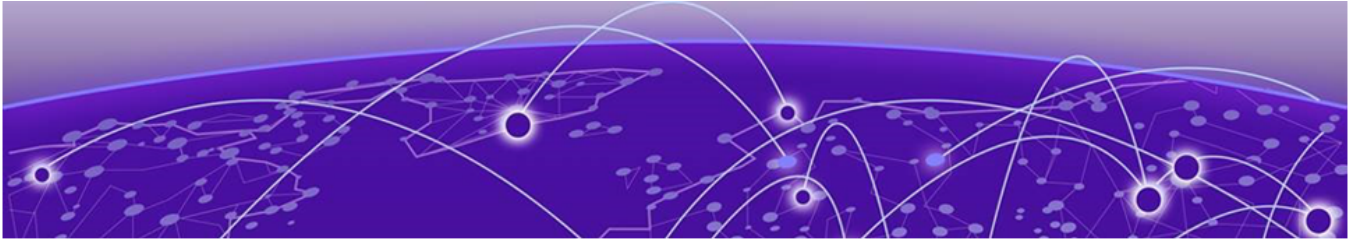
The User Enablement team at Extreme Networks has made every effort to ensure that this document is accurate, complete, and easy to use. We strive to improve our documentation to help you in your work, so we want to hear from you. We welcome all feedback, but we especially want to know about:

- Content errors, or confusing or conflicting information.
- Improvements that would help you find relevant information.
- Broken links or usability issues.

To send feedback, email us at [Product-Documentation@extremenetworks.com](mailto:Product-Documentation@extremenetworks.com).

Provide as much detail as possible including the publication title, topic heading, and page number (if applicable), along with your comments and suggestions for improvement.





# Document Revision Changes

---

The following table identifies changes between revisions of the same release document.

**Table 1: 9.4 Feature Matrix revision changes**

Revision	Change
AA	Initial revision for new release



## Features A to C

**Table 2: Access Control Entry product support**

Feature	Product	Release introduced
QoS Access Control Entries (ACE)	4220 Series	Fabric Engine 9.2
	5320 Series	Fabric Engine 8.6
	5420 Series	VOSS 8.4
	5520 Series	VOSS 8.2.5
	5720 Series	Fabric Engine 8.7
	7520 Series	Fabric Engine 8.10
	7720 Series	Fabric Engine 8.10
	7830 Series	Fabric Engine 9.3
	VSP 4900 Series	VOSS 8.1
	VSP 7400 Series	VOSS 8.0
Security ACEs	4220 Series	Fabric Engine 9.2
	5320 Series	Fabric Engine 8.6
	5420 Series	VOSS 8.4
	5520 Series	VOSS 8.2.5
	5720 Series	Fabric Engine 8.7
	7520 Series	Fabric Engine 8.10
	7720 Series	Fabric Engine 8.10
	7830 Series	Fabric Engine 9.3
	VSP 4900 Series	VOSS 8.1
	VSP 7400 Series	VOSS 8.0

**Table 2: Access Control Entry product support (continued)**

Feature	Product	Release introduced
IPv4 ACL filter enhancement - Apply ACE with both Security and QoS actions	4220 Series	Fabric Engine 9.2
	5320 Series	Fabric Engine 8.6
	5420 Series	Fabric Engine 8.7
	5520 Series	Fabric Engine 8.7
	5720 Series	Fabric Engine 8.7
	7520 Series	Fabric Engine 8.10
	7720 Series	Fabric Engine 8.10
	7830 Series	Fabric Engine 9.3
	VSP 4900 Series	Not Supported
	VSP 7400 Series	VOSS 8.7
Filter enhancement - Apply ACE to Routed Packets only	4220 Series	Fabric Engine 9.2
	5320 Series	Fabric Engine 8.6
	5420 Series	VOSS 8.4
	5520 Series	VOSS 8.4
	5720 Series	Fabric Engine 8.7
	7520 Series	Fabric Engine 8.10
	7720 Series	Fabric Engine 8.10
	7830 Series	Fabric Engine 9.3
	VSP 4900 Series	VOSS 8.4
	VSP 7400 Series	VOSS 8.4
Policy Based Routing (redirect-next-hop)	4220 Series	Fabric Engine 9.2
	5320 Series	Fabric Engine 8.6
	5420 Series	VOSS 8.4
	5520 Series	VOSS 8.2.5
	5720 Series	Fabric Engine 8.7
	7520 Series	Fabric Engine 8.10
	7720 Series	Fabric Engine 8.10
	7830 Series	Fabric Engine 9.3
	VSP 4900 Series	VOSS 8.1
	VSP 7400 Series	VOSS 8.0

**Table 2: Access Control Entry product support (continued)**

Feature	Product	Release introduced
Policy Based Routing (redirect-next-hop) with VRF support	4220 Series	Fabric Engine 9.2 The 4220 Series switches support only a single active VRF with IP configuration.
	5320 Series	Fabric Engine 8.6 For the 5320 Series, only the following models support more than one VRF with IP configuration: <ul style="list-style-type: none"> <li>• 5320-16P-2MXT-2X</li> <li>• 5320-24T-4X-XT</li> <li>• 5320-24T-24S-4XE-XT</li> <li>• 5320-48P-8XE</li> <li>• 5320-48T-8XE</li> </ul>
	5420 Series	VOSS 8.4
	5520 Series	VOSS 8.2.5
	5720 Series	Fabric Engine 8.7
	7520 Series	Fabric Engine 8.10
	7720 Series	Fabric Engine 8.10
	7830 Series	Fabric Engine 9.3
	VSP 4900 Series	VOSS 8.1
	VSP 7400 Series	VOSS 8.0

**Table 3: Access Control List product support**

Feature	Product	Release introduced
IPv4 Ingress and Egress port ACLs	4220 Series	Fabric Engine 9.2
	5320 Series	Fabric Engine 8.6
	5420 Series	VOSS 8.4
	5520 Series	VOSS 8.2.5
	5720 Series	Fabric Engine 8.7
	7520 Series	Fabric Engine 8.10
	7720 Series	Fabric Engine 8.10
	7830 Series	Fabric Engine 9.3  <b>Note:</b> Egress ACLs are not supported.
	VSP 4900 Series	VOSS 8.1
	VSP 7400 Series	VOSS 8.0

**Table 3: Access Control List product support (continued)**

Feature	Product	Release introduced
Ingress VLAN	4220 Series	Fabric Engine 9.2
	5320 Series	Fabric Engine 8.6
	5420 Series	VOSS 8.4
	5520 Series	VOSS 8.2.5
	5720 Series	Fabric Engine 8.7
	7520 Series	Fabric Engine 8.10
	7720 Series	Fabric Engine 8.10
	7830 Series	Fabric Engine 9.4
	VSP 4900 Series	VOSS 8.1
	VSP 7400 Series	VOSS 8.0
Ingress VSN	4220 Series	Fabric Engine 9.2
	5320 Series	Fabric Engine 8.6
	5420 Series	VOSS 8.4
	5520 Series	VOSS 8.2.5
	5720 Series	Fabric Engine 8.7
	7520 Series	Fabric Engine 8.10
	7720 Series	Fabric Engine 8.10
	7830 Series	Fabric Engine 9.3
	VSP 4900 Series	VOSS 8.1
	VSP 7400 Series	VOSS 8.0
IPv6 ingress filters	4220 Series	Fabric Engine 9.2 IPv6 management only
	5320 Series	Fabric Engine 8.6
	5420 Series	VOSS 8.4
	5520 Series	VOSS 8.2.5
	5720 Series	Fabric Engine 8.7
	7520 Series	Fabric Engine 8.10
	7720 Series	Fabric Engine 8.10
	7830 Series	Not Supported
	VSP 4900 Series	VOSS 8.1
	VSP 7400 Series	VOSS 8.0

**Table 3: Access Control List product support (continued)**

Feature	Product	Release introduced
IPv6 egress filters	4220 Series	Not Supported
	5320 Series	Fabric Engine 8.6
	5420 Series	VOSS 8.4
	5520 Series	VOSS 8.2.5
	5720 Series	Fabric Engine 8.7
	7520 Series	Fabric Engine 8.10
	7720 Series	Fabric Engine 8.10
	7830 Series	Not Supported
	VSP 4900 Series	VOSS 8.1
	VSP 7400 Series	VOSS 8.0
IPv6 ACL DSCP Remarking	4220 Series	Fabric Engine 9.2
	5320 Series	Fabric Engine 8.6
	5420 Series	VOSS 8.5
	5520 Series	VOSS 8.5
	5720 Series	Fabric Engine 8.7
	7520 Series	Fabric Engine 8.10
	7720 Series	Fabric Engine 8.10
	7830 Series	Not Supported
	VSP 4900 Series	VOSS 8.5
	VSP 7400 Series	VOSS 8.5

**Table 4: Address Resolution Protocol product support**

Feature	Product	Release introduced
Address Resolution Protocol (ARP) including Proxy ARP and Static ARP	4220 Series	Fabric Engine 9.2
	5320 Series	Fabric Engine 8.6
	5420 Series	VOSS 8.4
	5520 Series	VOSS 8.2.5
	5720 Series	Fabric Engine 8.7
	7520 Series	Fabric Engine 8.10
	7720 Series	Fabric Engine 8.10
	7830 Series	Fabric Engine 9.3
	VSP 4900 Series	VOSS 8.1
	VSP 7400 Series	VOSS 8.0

**Table 4: Address Resolution Protocol product support (continued)**

Feature	Product	Release introduced
Gratuitous ARP filtering	4220 Series	Fabric Engine 9.2
	5320 Series	Fabric Engine 8.6
	5420 Series	VOSS 8.4
	5520 Series	VOSS 8.2.5
	5720 Series	Fabric Engine 8.7
	7520 Series	Fabric Engine 8.10
	7720 Series	Fabric Engine 8.10
	7830 Series	Fabric Engine 9.3
	VSP 4900 Series	VOSS 8.1
	VSP 7400 Series	VOSS 8.0

**Table 5: Advanced Feature Bandwidth Reservation product support**

Feature	Product	Release introduced
Advanced Feature Bandwidth Reservation  <b>Note:</b> If the switch does not support this boot flag, it is because the hardware reserves the bandwidth automatically with no user interaction.	4220 Series	Fabric Engine 9.2 Supported on 4220-4MW-8P-4X, 4220-4MW-20P-4X, and 4220-8X
	5320 Series	Fabric Engine 8.6 Supported on 5320-24P-8XE, 5320-24T-8XE, 5320-48P-8XE, and 5320-48T-8XE
	5420 Series	VOSS 8.4
	5520 Series	VOSS 8.2.5
	5720 Series	Fabric Engine 8.7
	7520 Series	Fabric Engine 8.10
	7720 Series	Fabric Engine 8.10
	7830 Series	Fabric Engine 9.3 Supported on 7830-VIM-16CE (ports 3/13-3/16

**Table 5: Advanced Feature Bandwidth Reservation product support (continued)**

Feature	Product	Release introduced
		only) and 7830-VIM-8DE (ports 3/7-3/8 only)
	VSP 4900 Series	Not Supported
	VSP 7400 Series	VOSS 8.0

**Table 6: Alternative routes product support**

Feature	Product	Release introduced
Alternative routes for IPv4	4220 Series	Fabric Engine 9.2
	5320 Series	Fabric Engine 8.6
	5420 Series	VOSS 8.4
	5520 Series	VOSS 8.2.5
	5720 Series	Fabric Engine 8.7
	7520 Series	Fabric Engine 8.10
	7720 Series	Fabric Engine 8.10
	7830 Series	Fabric Engine 9.3
	VSP 4900 Series	VOSS 8.1
	VSP 7400 Series	VOSS 8.0
Alternative routes for IPv6	4220 Series	Not Supported
	5320 Series	Fabric Engine 8.6
	5420 Series	VOSS 8.4
	5520 Series	VOSS 8.2.5
	5720 Series	Fabric Engine 8.7
	7520 Series	Fabric Engine 8.10
	7720 Series	Fabric Engine 8.10
	7830 Series	Not Supported
	VSP 4900 Series	VOSS 8.1
	VSP 7400 Series	VOSS 8.0

**Table 7: Anycast IP Gateway product support**

Feature	Product	Release introduced
	4220 Series	Fabric Engine 9.2



**Table 7: Anycast IP Gateway product support (continued)**

Feature	Product	Release introduced
Anycast IP Gateway	5320 Series	Fabric Engine 9.1
	5420 Series	Fabric Engine 9.1
	5520 Series	Fabric Engine 9.1
	5720 Series	Fabric Engine 9.1
	7520 Series	Fabric Engine 9.1
	7720 Series	Fabric Engine 9.1
	7830 Series	Fabric Engine 9.3
	VSP 4900 Series	VOSS 9.1
	VSP 7400 Series	VOSS 9.1

**Table 8: Application Telemetry product support**

Feature	Product	Release introduced
Application Telemetry	4220 Series	Fabric Engine 9.2
	5320 Series	Fabric Engine 8.6
	5420 Series	VOSS 8.4
	5520 Series	VOSS 8.2.5
	5720 Series	Fabric Engine 8.7
	7520 Series	Fabric Engine 8.10
	7720 Series	Fabric Engine 8.10
	7830 Series	Not Supported
	VSP 4900 Series	VOSS 8.1
	VSP 7400 Series	VOSS 8.0
Application Telemetry Host Monitoring	4220 Series	Fabric Engine 9.2
	5320 Series	Fabric Engine 8.6
	5420 Series	VOSS 8.4
	5520 Series	VOSS 8.2.5
	5720 Series	Fabric Engine 8.7
	7520 Series	Fabric Engine 8.10
	7720 Series	Fabric Engine 8.10
	7830 Series	Not Supported
	VSP 4900 Series	VOSS 8.1
	VSP 7400 Series	VOSS 8.0.5

**Table 8: Application Telemetry product support (continued)**

Feature	Product	Release introduced
Application Telemetry — using Segmented Management Instance VLAN interface as source IP	4220 Series	Fabric Engine 9.2
	5320 Series	Fabric Engine 8.8
	5420 Series	Fabric Engine 8.8
	5520 Series	Fabric Engine 8.8
	5720 Series	Fabric Engine 8.8
	7520 Series	Fabric Engine 8.10
	7720 Series	Fabric Engine 8.10
	7830 Series	Not Supported
	VSP 4900 Series	VOSS 8.8
	VSP 7400 Series	VOSS 8.8
Application Telemetry — using Segmented Management Instance CLIP interface (GRT and VRF) as source IP	4220 Series	Fabric Engine 9.2
	5320 Series	Fabric Engine 8.8
	5420 Series	Fabric Engine 8.8
	5520 Series	Fabric Engine 8.8
	5720 Series	Fabric Engine 8.8
	7520 Series	Fabric Engine 8.10
	7720 Series	Fabric Engine 8.10
	7830 Series	Not Supported
	VSP 4900 Series	VOSS 8.8
	VSP 7400 Series	VOSS 8.8

**Table 9: Authentication for Privileged EXEC Mode product support**

Feature	Product	Release introduced
	4220 Series	Fabric Engine 9.2
	5320 Series	Fabric Engine 8.6

**Table 9: Authentication for Privileged EXEC Mode product support (continued)**

Feature	Product	Release introduced
Authentication for Privileged EXEC CLI Command Mode	5420 Series	VOSS 8.4
	5520 Series	VOSS 8.4
	5720 Series	Fabric Engine 8.7
	7520 Series	Fabric Engine 8.10
	7720 Series	Fabric Engine 8.10
	7830 Series	Fabric Engine 9.3
	VSP 4900 Series	VOSS 8.2
	VSP 7400 Series	VOSS 8.2

**Table 10: Auto-MLT product support**

Feature	Product	Release introduced
Auto-MLT on NNI ports	4220 Series	Fabric Engine 9.3
	5320 Series	Fabric Engine 9.3
	5420 Series	Fabric Engine 9.3
	5520 Series	Fabric Engine 9.3
	5720 Series	Fabric Engine 9.3
	7520 Series	Fabric Engine 9.3
	7720 Series	Fabric Engine 9.3
	7830 Series	Fabric Engine 9.3
	VSP 4900 Series	VOSS 9.3
	VSP 7400 Series	VOSS 9.3

**Table 11: Auto-Negotiation product support**

Feature	Product	Release introduced
Auto-Negotiation	4220 Series	Fabric Engine 9.2 Not supported on 4220-8X
	5320 Series	Fabric Engine 8.6
	5420 Series	VOSS 8.4 SFP-DD ports are only available if you disable Advanced Feature Bandwidth Reservation.
	5520 Series	VOSS 8.2.5 Not supported on 5520-24X or 5520-VIM-4X

**Table 11: Auto-Negotiation product support (continued)**

Feature	Product	Release introduced
		QSFP28 ports are only available if you disable Advanced Feature Bandwidth Reservation. 5520-48SE and 5520-VIM-4XE at 1 Gbps only 5520-VIM-4YE at 25 Gbps only
	5720 Series	Fabric Engine 8.7
	7520 Series	Fabric Engine 8.10
	7720 Series	Fabric Engine 8.10
	7830 Series	Fabric Engine 9.3
	VSP 4900 Series	VOSS 8.1 Not supported on: <ul style="list-style-type: none"> <li>• VIM5-2Q</li> <li>• VIM5-4X</li> </ul> VSP4900-12MXU-12XE - all fixed ports, with ports 13 to 24 at 1 Gbps only VSP4900-24S and VSP4900-48P - all fixed ports VSP4900-24XE - all fixed ports at 1 Gbps only VIM5-4XE at 1 Gbps only VIM5-4YE at 25 Gbps only
	VSP 7400 Series	VOSS 8.0

**Table 12: Auto-nickname for SPBM product support**

Feature	Product	Release introduced
	4220 Series	Fabric Engine 9.2

**Table 12: Auto-nickname for SPBM product support (continued)**

Feature	Product	Release introduced
Auto-nickname for SPBM	5320 Series	Fabric Engine 8.10
	5420 Series	Fabric Engine 8.10
	5520 Series	Fabric Engine 8.10
	5720 Series	Fabric Engine 8.10
	7520 Series	Fabric Engine 8.10
	7720 Series	Fabric Engine 8.10
	7830 Series	Fabric Engine 9.3
	VSP 4900 Series	VOSS 8.10
	VSP 7400 Series	VOSS 8.10

**Table 13: Auto-sense product support**

Feature	Product	Release introduced
Auto-sense	4220 Series	Fabric Engine 9.2
	5320 Series	Fabric Engine 8.6
	5420 Series	VOSS 8.4
	5520 Series	VOSS 8.3
	5720 Series	Fabric Engine 8.7
	7520 Series	Fabric Engine 8.10
	7720 Series	Fabric Engine 8.10
	7830 Series	Fabric Engine 9.3
	VSP 4900 Series	VOSS 8.3
	VSP 7400 Series	VOSS 8.3
Auto-sense can apply Fabric Attach (FA)-specific configuration	4220 Series	Fabric Engine 9.2
	5320 Series	Fabric Engine 8.6
	5420 Series	VOSS 8.4.2
	5520 Series	VOSS 8.4.2
	5720 Series	Fabric Engine 8.7
	7520 Series	Fabric Engine 8.10
	7720 Series	Fabric Engine 8.10
	7830 Series	Fabric Engine 9.3
	VSP 4900 Series	VOSS 8.4.2
	VSP 7400 Series	VOSS 8.4.2

**Table 13: Auto-sense product support (continued)**

Feature	Product	Release introduced
Auto-sense can apply Fabric Extend-specific configuration	4220 Series	Fabric Engine 9.2
	5320 Series	Fabric Engine 8.10.1
	5420 Series	Fabric Engine 8.10.1
	5520 Series	Fabric Engine 8.10.1
	5720 Series	Fabric Engine 8.10.1
	7520 Series	Fabric Engine 8.10.1
	7720 Series	Fabric Engine 8.10.1
	7830 Series	Not Supported
	VSP 4900 Series	VOSS 8.10.1
	VSP 7400 Series	VOSS 8.10.1
Auto-Sense MIB	4220 Series	Fabric Engine 9.2
	5320 Series	Fabric Engine 8.6
	5420 Series	VOSS 8.5
	5520 Series	VOSS 8.5
	5720 Series	Fabric Engine 8.7
	7520 Series	Fabric Engine 8.10
	7720 Series	Fabric Engine 8.10
	7830 Series	Fabric Engine 9.3
	VSP 4900 Series	VOSS 8.5
	VSP 7400 Series	VOSS 8.5

**Table 14: Automatic configuration of VIM speed**

Feature	Product	Release introduced
	4220 Series	Not Applicable
	5320 Series	Not Applicable

**Table 14: Automatic configuration of VIM speed (continued)**

Feature	Product	Release introduced
Auto-set vim-speed on 25G VIMs based on inserted transceiver type	5420 Series	Not Applicable
	5520 Series	Fabric Engine 8.9
	5720 Series	Fabric Engine 8.9
	7520 Series	Not Applicable
	7720 Series	Not Applicable
	7830 Series	Not Applicable
	VSP 4900 Series	VOSS 8.9
	VSP 7400 Series	Not Applicable

**Table 15: Bidirectional Forwarding Detection (BFD) product support**

Feature	Product	Release introduced
BFD (IPv4)	4220 Series	Fabric Engine 9.2
	5320 Series	Fabric Engine 8.6
	5420 Series	VOSS 8.4
	5520 Series	VOSS 8.2.5
	5720 Series	Fabric Engine 8.7
	7520 Series	Fabric Engine 8.10
	7720 Series	Fabric Engine 8.10
	7830 Series	Not Supported
	VSP 4900 Series	VOSS 8.1
	VSP 7400 Series	VOSS 8.1

**Table 15: Bidirectional Forwarding Detection (BFD) product support (continued)**

Feature	Product	Release introduced
BFD (IPv6)	4220 Series	Not Supported
	5320 Series	Fabric Engine 8.6 demonstration feature
	5420 Series	VOSS 8.4 demonstration feature
	5520 Series	VOSS 8.2.5 demonstration feature
	5720 Series	Fabric Engine 8.7 demonstration feature
	7520 Series	Fabric Engine 8.10 demonstration feature
	7720 Series	Fabric Engine 8.10 demonstration feature
	7830 Series	Not Supported
	VSP 4900 Series	VOSS 8.1 demonstration feature
	VSP 7400 Series	VOSS 8.1 demonstration feature
BFD over Fabric Extend Tunnels (IPv4)	4220 Series	Fabric Engine 9.2
	5320 Series	Fabric Engine 8.6
	5420 Series	VOSS 8.4
	5520 Series	VOSS 8.2.5
	5720 Series	Fabric Engine 8.7
	7520 Series	Fabric Engine 8.10
	7720 Series	Fabric Engine 8.10
	7830 Series	Not Supported
	VSP 4900 Series	VOSS 8.2
	VSP 7400 Series	VOSS 8.2

**Table 16: Border Gateway Protocol product support**

Feature	Product	Release introduced
Border Gateway Protocol for IPv4 (BGPv4)	4220 Series	Not Supported
	5320 Series	Fabric Engine 8.6 For the 5320 Series, only the following models support



**Table 16: Border Gateway Protocol product support (continued)**

Feature	Product	Release introduced
		more than one VRF with IP configuration: <ul style="list-style-type: none"> <li>• 5320-16P-2MXT-2X</li> <li>• 5320-24T-4X-XT</li> <li>• 5320-24T-24S-4XE-XT</li> <li>• 5320-48P-8XE</li> <li>• 5320-48T-8XE</li> </ul>
	5420 Series	VOSS 8.4
	5520 Series	VOSS 8.2.5
	5720 Series	Fabric Engine 8.7
	7520 Series	Fabric Engine 8.10
	7720 Series	Fabric Engine 8.10
	7830 Series	Fabric Engine 9.3
	VSP 4900 Series	VOSS 8.1
	VSP 7400 Series	VOSS 8.0
BGP+ (BGPv4 for IPv6)	4220 Series	Not Supported
	5320 Series	Fabric Engine 8.6 Not supported on 5320-16P-2MXT-2X
	5420 Series	VOSS 8.4
	5520 Series	VOSS 8.2.5
	5720 Series	Fabric Engine 8.7
	7520 Series	Fabric Engine 8.10
	7720 Series	Fabric Engine 8.10
	7830 Series	Not Supported
	VSP 4900 Series	VOSS 8.1
	VSP 7400 Series	VOSS 8.0

**Table 16: Border Gateway Protocol product support (continued)**

Feature	Product	Release introduced
BGPv6	4220 Series	Not Supported
	5320 Series	Fabric Engine 8.6
	5420 Series	VOSS 8.4
	5520 Series	VOSS 8.2.5
	5720 Series	Fabric Engine 8.7
	7520 Series	Fabric Engine 8.10
	7720 Series	Fabric Engine 8.10
	7830 Series	Fabric Engine 9.4
	VSP 4900 Series	VOSS 8.1
	VSP 7400 Series	VOSS 8.0
External BGP (eBGP)	4220 Series	Not Supported
	5320 Series	Fabric Engine 8.6
	5420 Series	VOSS 8.4
	5520 Series	VOSS 8.2.5
	5720 Series	Fabric Engine 8.7
	7520 Series	Fabric Engine 8.10
	7720 Series	Fabric Engine 8.10
	7830 Series	Fabric Engine 9.3
	VSP 4900 Series	VOSS 8.1
	VSP 7400 Series	VOSS 8.0
Internal BPG (iBGP)	4220 Series	Not Supported
	5320 Series	Fabric Engine 8.6
	5420 Series	VOSS 8.4
	5520 Series	VOSS 8.2.5
	5720 Series	Fabric Engine 8.7
	7520 Series	Fabric Engine 8.10
	7720 Series	Fabric Engine 8.10
	7830 Series	Fabric Engine 9.3
	VSP 4900 Series	VOSS 8.1
	VSP 7400 Series	VOSS 8.0

**Table 16: Border Gateway Protocol product support (continued)**

Feature	Product	Release introduced
Route metric for BGP route redistribution	4220 Series	Not Supported
	5320 Series	Fabric Engine 8.6
	5420 Series	VOSS 8.4
	5520 Series	VOSS 8.2.5
	5720 Series	Fabric Engine 8.7
	7520 Series	Fabric Engine 8.10
	7720 Series	Fabric Engine 8.10
	7830 Series	Fabric Engine 9.3
	VSP 4900 Series	VOSS 8.1
	VSP 7400 Series	VOSS 8.0
iBGP over user-created VRFs	4220 Series	Not Supported
	5320 Series	Fabric Engine 8.6 For the 5320 Series, only the following models support more than one VRF with IP configuration: <ul style="list-style-type: none"> <li>• 5320-16P-2MXT-2X</li> <li>• 5320-24T-4X-XT</li> <li>• 5320-24T-24S-4XE-XT</li> <li>• 5320-48P-8XE</li> <li>• 5320-48T-8XE</li> </ul>
	5420 Series	VOSS 8.4
	5520 Series	VOSS 8.2.5
	5720 Series	Fabric Engine 8.7
	7520 Series	Fabric Engine 8.10
	7720 Series	Fabric Engine 8.10
	7830 Series	Fabric Engine 9.3
	VSP 4900 Series	VOSS 8.1
	VSP 7400 Series	VOSS 8.1

**Table 17: Bridge Protocol Data Unit (BPDU) Guard product support**

Feature	Product	Release introduced
	4220 Series	Fabric Engine 9.2

**Table 17: Bridge Protocol Data Unit (BPDU) Guard product support (continued)**

Feature	Product	Release introduced
Bridge Protocol Data Unit (BPDU) Guard	5320 Series	Fabric Engine 8.6
	5420 Series	VOSS 8.4
	5520 Series	VOSS 8.2.5
	5720 Series	Fabric Engine 8.7
	7520 Series	Fabric Engine 8.10
	7720 Series	Fabric Engine 8.10
	7830 Series	Fabric Engine 9.4
	VSP 4900 Series	VOSS 8.1
	VSP 7400 Series	VOSS 8.0

**Table 18: Certificate order priority product support**

Feature	Product	Release introduced
Certificate order priority	4220 Series	Fabric Engine 9.2
	5320 Series	Fabric Engine 8.6
	5420 Series	VOSS 8.4
	5520 Series	VOSS 8.2.5
	5720 Series	Fabric Engine 8.7
	7520 Series	Fabric Engine 8.10
	7720 Series	Fabric Engine 8.10
	7830 Series	Fabric Engine 9.3
	VSP 4900 Series	VOSS 8.1
	VSP 7400 Series	VOSS 8.0

**Table 19: Channelization product support**

Feature	Product	Release introduced
Port Channelization	4220 Series	Not Applicable
	5320 Series	Not Applicable
	5420 Series	Not Applicable
	5520 Series	VOSS 8.2.5
	5720 Series	Fabric Engine 8.7
	7520 Series	Fabric Engine 8.10 Port 1/51 only
	7720 Series	Fabric Engine 8.10

**Table 19: Channelization product support (continued)**

Feature	Product	Release introduced
		All ports except 1/8
	7830 Series	Fabric Engine 9.3 Supported on: <ul style="list-style-type: none"> <li>ports 1/1-1/32 range: all odd ports</li> <li>ports 1/33-1/40: all ports</li> <li>7830-VIM-16CE: all ports</li> <li>7830-VIM-8DE: all ports</li> </ul>
	VSP 4900 Series	VOSS 8.1 (4x10G only)
	VSP 7400 Series	VOSS 8.0 Supported on VSP 7432CQ
Port Auto-Channelization	4220 Series	Not Applicable
	5320 Series	Not Applicable
	5420 Series	Not Applicable
	5520 Series	Fabric Engine 8.9
	5720 Series	Fabric Engine 8.9
	7520 Series	Fabric Engine 8.10
	7720 Series	Fabric Engine 8.10
	7830 Series	Fabric Engine 9.3
	VSP 4900 Series	VOSS 8.9 (4x10G only)
	VSP 7400 Series	VOSS 8.9 Supported on VSP 7432CQ

**Table 20: Client and Server product support**

Feature	Product	Release introduced
File Transfer Protocol (FTP) server and client (IPv4)	4220 Series	Fabric Engine 9.2
	5320 Series	Fabric Engine 8.6
	5420 Series	VOSS 8.4
	5520 Series	VOSS 8.2.5
	5720 Series	Fabric Engine 8.7
	7520 Series	Fabric Engine 8.10
	7720 Series	Fabric Engine 8.10
	7830 Series	Fabric Engine 9.3
	VSP 4900 Series	VOSS 8.1
	VSP 7400 Series	VOSS 8.0

**Table 20: Client and Server product support (continued)**

Feature	Product	Release introduced
File Transfer Protocol (FTP) server and client (IPv6)	4220 Series	Fabric Engine 9.2
	5320 Series	Fabric Engine 8.6
	5420 Series	VOSS 8.4
	5520 Series	VOSS 8.2.5
	5720 Series	Fabric Engine 8.7
	7520 Series	Fabric Engine 8.10
	7720 Series	Fabric Engine 8.10
	7830 Series	Not Supported
	VSP 4900 Series	VOSS 8.1
	VSP 7400 Series	VOSS 8.0
Hypertext Transfer Protocol (HTTP) and Hypertext Transfer Protocol Secure (HTTPS) (IPv4)	4220 Series	Fabric Engine 9.2
	5320 Series	Fabric Engine 8.6
	5420 Series	VOSS 8.4
	5520 Series	VOSS 8.2.5
	5720 Series	Fabric Engine 8.7
	7520 Series	Fabric Engine 8.10
	7720 Series	Fabric Engine 8.10
	7830 Series	Fabric Engine 9.3
	VSP 4900 Series	VOSS 8.1
	VSP 7400 Series	VOSS 8.0
Hypertext Transfer Protocol (HTTP) and Hypertext Transfer Protocol Secure (HTTPS) (IPv6)	4220 Series	Fabric Engine 9.2
	5320 Series	Fabric Engine 8.6
	5420 Series	VOSS 8.4
	5520 Series	VOSS 8.2.5
	5720 Series	Fabric Engine 8.7
	7520 Series	Fabric Engine 8.10
	7720 Series	Fabric Engine 8.10
	7830 Series	Not Supported
	VSP 4900 Series	VOSS 8.1
	VSP 7400 Series	VOSS 8.0

**Table 20: Client and Server product support (continued)**

Feature	Product	Release introduced
Secure Copy (SCP)  <b>Note:</b> The switch does not support the WinSCP client.	4220 Series	Fabric Engine 9.2
	5320 Series	Fabric Engine 8.6
	5420 Series	VOSS 8.4
	5520 Series	VOSS 8.2.5
	5720 Series	Fabric Engine 8.7
	7520 Series	Fabric Engine 8.10
	7720 Series	Fabric Engine 8.10
	7830 Series	Fabric Engine 9.3
	VSP 4900 Series	VOSS 8.1
	VSP 7400 Series	VOSS 8.0
Secure File Transfer Protocol (SFTP) server (IPv4)	4220 Series	Fabric Engine 9.2
	5320 Series	Fabric Engine 8.6
	5420 Series	VOSS 8.4
	5520 Series	VOSS 8.2.5
	5720 Series	Fabric Engine 8.7
	7520 Series	Fabric Engine 8.10
	7720 Series	Fabric Engine 8.10
	7830 Series	Fabric Engine 9.3
	VSP 4900 Series	VOSS 8.1
	VSP 7400 Series	VOSS 8.0
Secure File Transfer Protocol (SFTP) server (IPv6)	4220 Series	Fabric Engine 9.2
	5320 Series	Fabric Engine 8.6
	5420 Series	VOSS 8.4
	5520 Series	VOSS 8.2.5
	5720 Series	Fabric Engine 8.7
	7520 Series	Fabric Engine 8.10
	7720 Series	Fabric Engine 8.10
	7830 Series	Not Supported
	VSP 4900 Series	VOSS 8.1
	VSP 7400 Series	VOSS 8.0

**Table 20: Client and Server product support (continued)**

Feature	Product	Release introduced
Telnet server and client (IPv4)	4220 Series	Fabric Engine 9.2
	5320 Series	Fabric Engine 8.6
	5420 Series	VOSS 8.4
	5520 Series	VOSS 8.2.5
	5720 Series	Fabric Engine 8.7
	7520 Series	Fabric Engine 8.10
	7720 Series	Fabric Engine 8.10
	7830 Series	Fabric Engine 9.3
	VSP 4900 Series	VOSS 8.1
	VSP 7400 Series	VOSS 8.0
Telnet server and client (IPv6)	4220 Series	Fabric Engine 9.2
	5320 Series	Fabric Engine 8.6
	5420 Series	VOSS 8.4
	5520 Series	VOSS 8.2.5
	5720 Series	Fabric Engine 8.7
	7520 Series	Fabric Engine 8.10
	7720 Series	Fabric Engine 8.10
	7830 Series	Fabric Engine 9.4
	VSP 4900 Series	VOSS 8.1
	VSP 7400 Series	VOSS 8.0
Trivial File Transfer Protocol (TFTP) server and client (IPv4)	4220 Series	Fabric Engine 9.2
	5320 Series	Fabric Engine 8.6
	5420 Series	VOSS 8.4
	5520 Series	VOSS 8.2.5
	5720 Series	Fabric Engine 8.7
	7520 Series	Fabric Engine 8.10
	7720 Series	Fabric Engine 8.10
	7830 Series	Fabric Engine 9.3
	VSP 4900 Series	VOSS 8.1
	VSP 7400 Series	VOSS 8.0



**Table 20: Client and Server product support (continued)**

Feature	Product	Release introduced
TFTP server (IPv6)	4220 Series	Fabric Engine 9.2
	5320 Series	Fabric Engine 8.6
	5420 Series	VOSS 8.4
	5520 Series	VOSS 8.2.5
	5720 Series	Fabric Engine 8.7
	7520 Series	Fabric Engine 8.10
	7720 Series	Fabric Engine 8.10
	7830 Series	Fabric Engine 9.4
	VSP 4900 Series	VOSS 8.1
	VSP 7400 Series	VOSS 8.0
TFTP client (IPv6)	4220 Series	Fabric Engine 9.2
	5320 Series	Fabric Engine 8.6
	5420 Series	VOSS 8.4
	5520 Series	VOSS 8.2.5
	5720 Series	Fabric Engine 8.7
	7520 Series	Fabric Engine 8.10
	7720 Series	Fabric Engine 8.10
	7830 Series	Fabric Engine 9.4
	VSP 4900 Series	VOSS 8.1
	VSP 7400 Series	VOSS 8.0

**Table 21: Command Line Interface product support**

Feature	Product	Release introduced
	4220 Series	Fabric Engine 9.2

**Table 21: Command Line Interface product support (continued)**

Feature	Product	Release introduced
Command Line Interface (CLI)	5320 Series	Fabric Engine 8.6
	5420 Series	VOSS 8.4
	5520 Series	VOSS 8.2.5
	5720 Series	Fabric Engine 8.7
	7520 Series	Fabric Engine 8.10
	7720 Series	Fabric Engine 8.10
	7830 Series	Fabric Engine 9.3
	VSP 4900 Series	VOSS 8.1
	VSP 7400 Series	VOSS 8.0

**Table 22: Connectivity Fault Management product support**

Feature	Product	Release introduced
IEEE 802.1ag Connectivity Fault Management (CFM): <ul style="list-style-type: none"> <li>• Layer 2 Ping</li> <li>• TraceRoute</li> <li>• TraceTree</li> </ul>	4220 Series	Fabric Engine 9.2
	5320 Series	Fabric Engine 8.6
	5420 Series	VOSS 8.4
	5520 Series	VOSS 8.2.5
	5720 Series	Fabric Engine 8.7
	7520 Series	Fabric Engine 8.10
	7720 Series	Fabric Engine 8.10
	7830 Series	Fabric Engine 9.3
	VSP 4900 Series	VOSS 8.1
	VSP 7400 Series	VOSS 8.0

**Table 23: Custom Logon Banner product support**

Feature	Product	Release introduced
	4220 Series	Fabric Engine 9.2

**Table 23: Custom Logon Banner product support (continued)**

Feature	Product	Release introduced
Custom logon banner	5320 Series	Fabric Engine 8.6
	5420 Series	VOSS 8.4
	5520 Series	VOSS 8.2.5
	5720 Series	Fabric Engine 8.7
	7520 Series	Fabric Engine 8.10
	7720 Series	Fabric Engine 8.10
	7830 Series	Fabric Engine 9.3
	VSP 4900 Series	VOSS 8.1
	VSP 7400 Series	VOSS 8.0



## Features D to F

**Table 24: Denial-of-service attack prevention product support**

Feature	Product	Release introduced
Directed Broadcast	4220 Series	Fabric Engine 9.2
	5320 Series	Fabric Engine 8.6
	5420 Series	VOSS 8.4
	5520 Series	VOSS 8.2.5
	5720 Series	Fabric Engine 8.7
	7520 Series	Fabric Engine 8.10
	7720 Series	Fabric Engine 8.10
	7830 Series	Not Supported
	VSP 4900 Series	VOSS 8.1
	VSP 7400 Series	VOSS 8.0
High Secure mode (hsecure boot configuration flag)	4220 Series	Fabric Engine 9.2
	5320 Series	Fabric Engine 8.6
	5420 Series	VOSS 8.4
	5520 Series	VOSS 8.2.5
	5720 Series	Fabric Engine 8.7
	7520 Series	Fabric Engine 8.10
	7720 Series	Fabric Engine 8.10
	7830 Series	Fabric Engine 9.3
	VSP 4900 Series	VOSS 8.1
	VSP 7400 Series	VOSS 8.0

**Table 25: DHCPv6 Guard product support**

Feature	Product	Release introduced
	4220 Series	Fabric Engine 9.2

**Table 25: DHCPv6 Guard product support (continued)**

Feature	Product	Release introduced
DHCPv6 Guard	5320 Series	Fabric Engine 8.6
	5420 Series	VOSS 8.4
	5520 Series	VOSS 8.2.5
	5720 Series	Fabric Engine 8.7
	7520 Series	Fabric Engine 8.10
	7720 Series	Fabric Engine 8.10
	7830 Series	Not Supported
	VSP 4900 Series	VOSS 8.1
	VSP 7400 Series	VOSS 8.0

**Table 26: Differentiated Services product support**

Feature	Product	Release introduced
Differentiated Services (DiffServ) including Per-Hop Behavior	4220 Series	Fabric Engine 9.2
	5320 Series	Fabric Engine 8.6
	5420 Series	VOSS 8.4
	5520 Series	VOSS 8.2.5
	5720 Series	Fabric Engine 8.7
	7520 Series	Fabric Engine 8.10
	7720 Series	Fabric Engine 8.10
	7830 Series	Fabric Engine 9.3
	VSP 4900 Series	VOSS 8.1
	VSP 7400 Series	VOSS 8.0

**Table 27: Digital Certificate/PKI product support**

Feature	Product	Release introduced
	4220 Series	Fabric Engine 9.2

**Table 27: Digital Certificate/PKI product support (continued)**

Feature	Product	Release introduced
Digital Certificate/PKI	5320 Series	Fabric Engine 8.6
	5420 Series	VOSS 8.4
	5520 Series	VOSS 8.2.5
	5720 Series	Fabric Engine 8.7
	7520 Series	Fabric Engine 8.10
	7720 Series	Fabric Engine 8.10
	7830 Series	Fabric Engine 9.3
	VSP 4900 Series	VOSS 8.1
	VSP 7400 Series	VOSS 8.0
Subject alternative name	4220 Series	Fabric Engine 9.2
	5320 Series	Fabric Engine 8.6
	5420 Series	VOSS 8.4
	5520 Series	VOSS 8.2.5
	5720 Series	Fabric Engine 8.7
	7520 Series	Fabric Engine 8.10
	7720 Series	Fabric Engine 8.10
	7830 Series	Fabric Engine 9.3
	VSP 4900 Series	VOSS 8.1
	VSP 7400 Series	VOSS 8.0.6
Certificate fingerprint validation	4220 Series	Fabric Engine 9.2
	5320 Series	Fabric Engine 8.6
	5420 Series	VOSS 8.4
	5520 Series	VOSS 8.3
	5720 Series	Fabric Engine 8.7
	7520 Series	Fabric Engine 8.10
	7720 Series	Fabric Engine 8.10
	7830 Series	Fabric Engine 9.3
	VSP 4900 Series	VOSS 8.3
	VSP 7400 Series	VOSS 8.3

**Table 27: Digital Certificate/PKI product support (continued)**

Feature	Product	Release introduced
Multiple CA Trustpoints and multiple Certificate Identities	4220 Series	Fabric Engine 9.2
	5320 Series	Fabric Engine 8.6
	5420 Series	VOSS 8.5
	5520 Series	VOSS 8.3.100
	5720 Series	Fabric Engine 8.7
	7520 Series	Fabric Engine 8.10
	7720 Series	Fabric Engine 8.10
	7830 Series	Fabric Engine 9.3
	VSP 4900 Series	VOSS 8.5
	VSP 7400 Series	VOSS 8.5

**Table 28: Digital Certificates for IPsec Authentication product support**

Feature	Product	Release introduced
Digital Certificates for IPsec Authentication	4220 Series	Not Supported
	5320 Series	Not Supported
	5420 Series	Not Supported
	5520 Series	Not Supported
	5720 Series	Fabric Engine 8.7 Supported on 5720-24MXW and 5720-48MXW For Fabric Extend over IPsec
	7520 Series	Fabric Engine 8.10 For Fabric Extend over IPsec
	7720 Series	Fabric Engine 8.10 For Fabric Extend over IPsec
	7830 Series	Not Supported
	VSP 4900 Series	VOSS 8.3 Supported on VSP4900-12MXU-12XE and VSP4900-24XE For Fabric Extend over IPsec
	VSP 7400 Series	VOSS 8.3

**Table 28: Digital Certificates for IPsec Authentication product support (continued)**

Feature	Product	Release introduced
		For Fabric Extend over IPsec

**Table 29: Distributed Virtual Routing product support on a Controller node**

Feature	Product	Release introduced
DvR Controller role	4220 Series	Not Supported
	5320 Series	Not Supported
	5420 Series	Not Supported
	5520 Series	VOSS 8.2.5
	5720 Series	Fabric Engine 8.7
	7520 Series	Fabric Engine 8.10
	7720 Series	Fabric Engine 8.10
	7830 Series	Not Supported
	VSP 4900 Series	VOSS 8.1.5 Not supported on VSP4900-48P
	VSP 7400 Series	VOSS 8.0
DvR Isolated Domain	4220 Series	Not Supported
	5320 Series	Not Supported
	5420 Series	Not Supported
	5520 Series	Fabric Engine 8.8
	5720 Series	Fabric Engine 8.8
	7520 Series	Fabric Engine 8.10
	7720 Series	Fabric Engine 8.10
	7830 Series	Not Supported
	VSP 4900 Series	VOSS 8.8 Not supported on VSP4900-48P
	VSP 7400 Series	VOSS 8.8



**Table 29: Distributed Virtual Routing product support on a Controller node (continued)**

Feature	Product	Release introduced
dvr-one-ip	4220 Series	Not Supported
	5320 Series	Not Supported
	5420 Series	Not Supported
	5520 Series	VOSS 8.3
	5720 Series	Fabric Engine 8.7
	7520 Series	Fabric Engine 8.10
	7720 Series	Fabric Engine 8.10
	7830 Series	Not Supported
	VSP 4900 Series	VOSS 8.3 Not supported on VSP4900-48P
	VSP 7400 Series	VOSS 8.3
Distributed Virtual Routing (DvR) In-band Management	4220 Series	Not Supported
	5320 Series	Not Supported
	5420 Series	Not Supported
	5520 Series	Not Supported
	5720 Series	Fabric Engine 8.7
	7520 Series	Fabric Engine 8.10
	7720 Series	Fabric Engine 8.10
	7830 Series	Not Supported
	VSP 4900 Series	VOSS 8.1 Not supported on VSP4900-48P
	VSP 7400 Series	VOSS 8.0

**Table 29: Distributed Virtual Routing product support on a Controller node (continued)**

Feature	Product	Release introduced
<b>DvR-VRRP Coexistence</b>  <b>Important:</b> To use this functionality, you must upgrade the software on all DvR BEBs, including Leaf nodes, to at least the minimum software version to support this functionality.	4220 Series	Not Supported
	5320 Series	Not Supported
	5420 Series	Not Supported
	5520 Series	Fabric Engine 8.8
	5720 Series	Fabric Engine 8.8
	7520 Series	Fabric Engine 8.10
	7720 Series	Fabric Engine 8.10
	7830 Series	Not Supported
	VSP 4900 Series	VOSS 8.8 Not supported on VSP4900-48P
	VSP 7400 Series	VOSS 8.8

**Table 30: Distributed Virtual Routing product support on a Leaf node**

Feature	Product	Release introduced
DvR Leaf role	4220 Series	Not Supported
	5320 Series	Fabric Engine 8.6 Supported on 5320-48P-8XE, 5320-48T-8XE, and 5320-24T-24S-4XE-XT
	5420 Series	VOSS 8.4
	5520 Series	VOSS 8.2.5
	5720 Series	Fabric Engine 8.7
	7520 Series	Fabric Engine 8.10
	7720 Series	Fabric Engine 8.10
	7830 Series	Not Supported
	VSP 4900 Series	VOSS 8.1
	VSP 7400 Series	VOSS 8.0

**Table 30: Distributed Virtual Routing product support on a Leaf node (continued)**

Feature	Product	Release introduced
DvR In-band Management	4220 Series	Not Supported
	5320 Series	Fabric Engine 8.6 Supported on 5320-48P-8XE, 5320-48T-8XE, and 5320-24T-24S-4XE-XT
	5420 Series	VOSS 8.4
	5520 Series	VOSS 8.2.5
	5720 Series	Fabric Engine 8.7
	7520 Series	Fabric Engine 8.10
	7720 Series	Fabric Engine 8.10
	7830 Series	Not Supported
	VSP 4900 Series	VOSS 8.1
	VSP 7400 Series	VOSS 8.0
Management I-SID Assignment to DvR Leaf	4220 Series	Not Supported
	5320 Series	Fabric Engine 8.6 Supported on 5320-48P-8XE, 5320-48T-8XE, and 5320-24T-24S-4XE-XT
	5420 Series	VOSS 8.5
	5520 Series	VOSS 8.5
	5720 Series	Fabric Engine 8.7
	7520 Series	Fabric Engine 8.10
	7720 Series	Fabric Engine 8.10
	7830 Series	Not Supported
	VSP 4900 Series	VOSS 8.5
	VSP 7400 Series	VOSS 8.5

**Table 31: Domain Name Service product support**

Feature	Product	Release introduced
	4220 Series	Fabric Engine 9.2

**Table 31: Domain Name Service product support (continued)**

Feature	Product	Release introduced
Domain Name Service (DNS) client (IPv4)	5320 Series	Fabric Engine 8.6
	5420 Series	VOSS 8.4
	5520 Series	VOSS 8.2.5
	5720 Series	Fabric Engine 8.7
	7520 Series	Fabric Engine 8.10
	7720 Series	Fabric Engine 8.10
	7830 Series	Fabric Engine 9.3
	VSP 4900 Series	VOSS 8.1
	VSP 7400 Series	VOSS 8.0
DNS client (IPv6)	4220 Series	Fabric Engine 9.2
	5320 Series	Fabric Engine 8.6
	5420 Series	VOSS 8.4
	5520 Series	VOSS 8.2.5
	5720 Series	Fabric Engine 8.7
	7520 Series	Fabric Engine 8.10
	7720 Series	Fabric Engine 8.10
	7830 Series	Fabric Engine 9.4
	VSP 4900 Series	VOSS 8.1
	VSP 7400 Series	VOSS 8.0
IPv6 Router Advertisement options for DNS	4220 Series	Fabric Engine 9.2
	5320 Series	Fabric Engine 9.2
	5420 Series	Fabric Engine 9.2
	5520 Series	Fabric Engine 9.2
	5720 Series	Fabric Engine 9.2
	7520 Series	Fabric Engine 9.2
	7720 Series	Fabric Engine 9.2
	7830 Series	Fabric Engine 9.4
	VSP 4900 Series	VOSS 9.2
	VSP 7400 Series	VOSS 9.2

**Table 32: Dynamic ARP Inspection (DAI) product support**

Feature	Product	Release introduced
	4220 Series	Fabric Engine 9.2

**Table 32: Dynamic ARP Inspection (DAI) product support (continued)**

Feature	Product	Release introduced
Dynamic ARP Inspection (DAI)	5320 Series	Fabric Engine 8.6
	5420 Series	VOSS 8.4
	5520 Series	VOSS 8.2.5
	5720 Series	Fabric Engine 8.7
	7520 Series	Fabric Engine 8.10
	7720 Series	Fabric Engine 8.10
	7830 Series	Not Supported
	VSP 4900 Series	VOSS 8.1
	VSP 7400 Series	VOSS 8.0

**Table 33: Dynamic Host Configuration Protocol product support**

Feature	Product	Release introduced
Dynamic Host Configuration Protocol (DHCP) Server	4220 Series	Fabric Engine 9.2
	5320 Series	Fabric Engine 9.0
	5420 Series	Fabric Engine 9.0
	5520 Series	Fabric Engine 9.0
	5720 Series	Fabric Engine 9.0
	7520 Series	Fabric Engine 9.0
	7720 Series	Fabric Engine 9.0
	7830 Series	Not Supported
	VSP 4900 Series	VOSS 9.0
	VSP 7400 Series	VOSS 9.0
Option 43 (Vendor Specific) and Option 60 (Class Id)	4220 Series	Fabric Engine 9.2
	5320 Series	Fabric Engine 9.0.2
	5420 Series	Fabric Engine 9.0.2
	5520 Series	Fabric Engine 9.0.2
	5720 Series	Fabric Engine 9.0.2
	7520 Series	Fabric Engine 9.0.2
	7720 Series	Fabric Engine 9.0.2
	7830 Series	Not Supported
	VSP 4900 Series	VOSS 9.0.2
	VSP 7400 Series	VOSS 9.0.2

**Table 33: Dynamic Host Configuration Protocol product support (continued)**

Feature	Product	Release introduced
Dynamic Host Configuration Protocol (DHCP) Relay	4220 Series	Fabric Engine 9.2
	5320 Series	Fabric Engine 8.6
	5420 Series	VOSS 8.4
	5520 Series	VOSS 8.2.5
	5720 Series	Fabric Engine 8.7
	7520 Series	Fabric Engine 8.10
	7720 Series	Fabric Engine 8.10
	7830 Series	Fabric Engine 9.3
	VSP 4900 Series	VOSS 8.1
	VSP 7400 Series	VOSS 8.0
Option 82 (Relay Agent Information)	4220 Series	Fabric Engine 9.2
	5320 Series	Fabric Engine 8.6
	5420 Series	VOSS 8.4
	5520 Series	VOSS 8.2.5
	5720 Series	Fabric Engine 8.7
	7520 Series	Fabric Engine 8.10
	7720 Series	Fabric Engine 8.10
	7830 Series	Fabric Engine 9.3
	VSP 4900 Series	VOSS 8.1
	VSP 7400 Series	VOSS 8.0
DHCP Smart Relay	4220 Series	Not Supported
	5320 Series	Fabric Engine 8.10
	5420 Series	Fabric Engine 8.10
	5520 Series	Fabric Engine 8.10
	5720 Series	Fabric Engine 8.10
	7520 Series	Fabric Engine 8.10
	7720 Series	Fabric Engine 8.10
	7830 Series	Fabric Engine 9.3
	VSP 4900 Series	VOSS 8.10
	VSP 7400 Series	VOSS 8.10

**Table 34: Dynamic Host Configuration Protocol Relay for IPv6 product support**

Feature	Product	Release introduced
	4220 Series	Fabric Engine 9.2

**Table 34: Dynamic Host Configuration Protocol Relay for IPv6 product support (continued)**

Feature	Product	Release introduced
IPv6 DHCP Relay	5320 Series	Fabric Engine 8.6
	5420 Series	VOSS 8.4
	5520 Series	VOSS 8.2.5
	5720 Series	Fabric Engine 8.7
	7520 Series	Fabric Engine 8.10
	7720 Series	Fabric Engine 8.10
	7830 Series	Fabric Engine 9.4
	VSP 4900 Series	VOSS 8.1
	VSP 7400 Series	VOSS 8.0

**Table 35: Dynamic Host Configuration Protocol Snooping and Neighbor Discovery Inspection product support**

Feature	Product	Release introduced
DHCP Snooping(IPv4)	4220 Series	Fabric Engine 9.2
	5320 Series	Fabric Engine 8.6
	5420 Series	VOSS 8.4
	5520 Series	VOSS 8.2.5
	5720 Series	Fabric Engine 8.7
	7520 Series	Fabric Engine 8.10
	7720 Series	Fabric Engine 8.10
	7830 Series	Not Supported
	VSP 4900 Series	VOSS 8.1
	VSP 7400 Series	VOSS 8.0
DHCP Snooping (IPv6)	4220 Series	Fabric Engine 9.2
	5320 Series	Fabric Engine 8.6
	5420 Series	VOSS 8.4
	5520 Series	VOSS 8.2.5
	5720 Series	Fabric Engine 8.7
	7520 Series	Fabric Engine 8.10
	7720 Series	Fabric Engine 8.10
	7830 Series	Not Supported
	VSP 4900 Series	VOSS 8.1
	VSP 7400 Series	VOSS 8.0

**Table 35: Dynamic Host Configuration Protocol Snooping and Neighbor Discovery Inspection product support (continued)**

Feature	Product	Release introduced
Neighbor Discovery Inspection (IPv6)	4220 Series	Fabric Engine 9.2
	5320 Series	Fabric Engine 8.6
	5420 Series	VOSS 8.4
	5520 Series	VOSS 8.2.5
	5720 Series	Fabric Engine 8.7
	7520 Series	Fabric Engine 8.10
	7720 Series	Fabric Engine 8.10
	7830 Series	Fabric Engine 9.4
	VSP 4900 Series	VOSS 8.1
	VSP 7400 Series	VOSS 8.0

**Table 36: Dynamic Nickname Assignment product support**

Feature	Product	Release introduced
Dynamic Nickname Assignment Client mode	4220 Series	Fabric Engine 9.2
	5320 Series	Fabric Engine 8.6
	5420 Series	VOSS 8.4
	5520 Series	VOSS 8.2.5
	5720 Series	Fabric Engine 8.7
	7520 Series	Fabric Engine 8.10
	7720 Series	Fabric Engine 8.10
	7830 Series	Fabric Engine 9.3
	VSP 4900 Series	VOSS 8.1
	VSP 7400 Series	VOSS 8.0.5
Dynamic Nickname Assignment Server mode	4220 Series	Fabric Engine 9.2
	5320 Series	Fabric Engine 8.6
	5420 Series	VOSS 8.4
	5520 Series	VOSS 8.2.5
	5720 Series	Fabric Engine 8.7
	7520 Series	Fabric Engine 8.10
	7720 Series	Fabric Engine 8.10
	7830 Series	Fabric Engine 9.4
	VSP 4900 Series	VOSS 8.1
	VSP 7400 Series	VOSS 8.0.5



**Table 36: Dynamic Nickname Assignment product support (continued)**

Feature	Product	Release introduced
Extends the assignment behavior with a <i>prefix</i> parameter	4220 Series	Fabric Engine 9.2
	5320 Series	Fabric Engine 8.6
	5420 Series	VOSS 8.4
	5520 Series	VOSS 8.3
	5720 Series	Fabric Engine 8.7
	7520 Series	Fabric Engine 8.10
	7720 Series	Fabric Engine 8.10
	7830 Series	Not Supported
	VSP 4900 Series	VOSS 8.3
	VSP 7400 Series	VOSS 8.3

**Table 37: Egress Tunnel Shaping product support**

Feature	Product	Release introduced
Egress Shaper for Fabric Extend tunnels on Fabric IPsec Gateway virtual machine	4220 Series	Not Supported
	5320 Series	Not Supported
	5420 Series	Not Supported
	5520 Series	Not Supported
	5720 Series	Fabric Engine 8.7 Supported on 5720-24MXW and 5720-48MXW
	7520 Series	Fabric Engine 8.10
	7720 Series	Fabric Engine 8.10
	7830 Series	Not Supported
	VSP 4900 Series	VOSS 8.3.1 Supported on VSP4900-12MXU-12XE and VSP4900-24XE
	VSP 7400 Series	VOSS 8.3.1

**Table 38: Endpoint Tracking product support**

Feature	Product	Release introduced
	4220 Series	Not Supported

**Table 38: Endpoint Tracking product support (continued)**

Feature	Product	Release introduced
Endpoint Tracking	5320 Series	Not Supported
	5420 Series	Not Supported
	5520 Series	VOSS 8.2.5
	5720 Series	Fabric Engine 8.7
	7520 Series	Fabric Engine 8.10
	7720 Series	Fabric Engine 8.10
	7830 Series	Not Supported
	VSP 4900 Series	VOSS 8.7
	VSP 7400 Series	VOSS 8.1.1

**Table 39: Energy Efficient Ethernet product support**

Feature	Product	Release introduced
Energy Efficient Ethernet (EEE)	4220 Series	Fabric Engine 9.2
	5320 Series	Fabric Engine 8.6
	5420 Series	VOSS 8.4 Supported on fixed copper ports only Not supported on 5420F-24S-4XE
	5520 Series	VOSS 8.2.5 Supported on fixed copper ports only Not supported on 5520-24X or 5520-48SE
	5720 Series	Fabric Engine 8.7
	7520 Series	Fabric Engine 8.10 Supported on 7520-48XT-6C
	7720 Series	Not Supported
	7830 Series	Not Supported
	VSP 4900 Series	VOSS 8.1 Supported on all fixed copper ports on VSP4900-48P and

**Table 39: Energy Efficient Ethernet product support (continued)**

Feature	Product	Release introduced
		ports 1/1-1/12 on VSP4900-12MXU-12XE
	VSP 7400 Series	Not Supported

**Table 40: Energy Saver product support**

Feature	Product	Release introduced
Energy Saver	4220 Series	Fabric Engine 9.2
	5320 Series	Fabric Engine 8.6
	5420 Series	VOSS 8.4 Not supported on 5420F-24S-4XE
	5520 Series	VOSS 8.2.5 Not supported on 5520-24X or 5520-48SE Supported on fixed ports only.
	5720 Series	Fabric Engine 8.7
	7520 Series	Fabric Engine 8.10 Supported on 7520-48XT-6C
	7720 Series	Not Supported
	7830 Series	Not Supported
	VSP 4900 Series	VOSS 8.1 Supported on VSP4900-48P and ports 1/1 to 1/12 on VSP4900-12MXU-12XE
	VSP 7400 Series	Not Supported

**Table 41: Energy Star Certification product support**

Feature	Product	Release introduced
Displays inlet power and temperature requirements  <b>Note:</b> The device requires a USB thermal sensor to display the temperature value in command output.	4220 Series	Not Applicable
	5320 Series	Not Applicable
	5420 Series	Fabric Engine 9.2 5420F-24S-4XE, 5420F-24T-4XE, and 5420F-48T-4XE are not

**Table 41: Energy Star Certification product support (continued)**

Feature	Product	Release introduced
		eligible for Energy Star certification.
	5520 Series	Fabric Engine 9.2
	5720 Series	Fabric Engine 9.2
	7520 Series	Fabric Engine 9.2 7520-48XT-6C only
	7720 Series	Not Applicable
	7830 Series	Not Applicable
	VSP 4900 Series	Not Applicable
	VSP 7400 Series	Not Applicable

**Table 42: Enhanced Secure Mode product support**

Feature	Product	Release introduced
Enhanced Secure mode	4220 Series	Fabric Engine 9.2
	5320 Series	Fabric Engine 8.6
	5420 Series	VOSS 8.4
	5520 Series	VOSS 8.2.5
	5720 Series	Fabric Engine 8.7
	7520 Series	Fabric Engine 8.10
	7720 Series	Fabric Engine 8.10
	7830 Series	Fabric Engine 9.3
	VSP 4900 Series	VOSS 8.1
	VSP 7400 Series	VOSS 8.0
Enhanced Secure mode for JITC and non-JITC sub-modes.	4220 Series	Fabric Engine 9.2
	5320 Series	Fabric Engine 8.6
	5420 Series	VOSS 8.4
	5520 Series	VOSS 8.2.5
	5720 Series	Fabric Engine 8.7
	7520 Series	Fabric Engine 8.10
	7720 Series	Fabric Engine 8.10
	7830 Series	Fabric Engine 9.3
	VSP 4900 Series	VOSS 8.1
	VSP 7400 Series	VOSS 8.0

**Table 42: Enhanced Secure Mode product support (continued)**

Feature	Product	Release introduced
Enhanced Secure mode - sensitive file protection	4220 Series	Fabric Engine 9.2
	5320 Series	Fabric Engine 8.6
	5420 Series	VOSS 8.5
	5520 Series	VOSS 8.5
	5720 Series	Fabric Engine 8.7
	7520 Series	Fabric Engine 8.10
	7720 Series	Fabric Engine 8.10
	7830 Series	Fabric Engine 9.3
	VSP 4900 Series	VOSS 8.5
	VSP 7400 Series	VOSS 8.5

**Table 43: Enterprise Device Manager product support**

Feature	Product	Release introduced
Enterprise Device Manager (EDM)	4220 Series	Fabric Engine 9.2
	5320 Series	Fabric Engine 8.6
	5420 Series	VOSS 8.4
	5520 Series	VOSS 8.2.5
	5720 Series	Fabric Engine 8.7
	7520 Series	Fabric Engine 8.10
	7720 Series	Fabric Engine 8.10
	7830 Series	Fabric Engine 9.3
	VSP 4900 Series	VOSS 8.1
	VSP 7400 Series	VOSS 8.0

**Table 43: Enterprise Device Manager product support (continued)**

Feature	Product	Release introduced
Read-Only user for EDM	4220 Series	Fabric Engine 9.2
	5320 Series	Fabric Engine 8.6
	5420 Series	VOSS 8.4
	5520 Series	VOSS 8.2.5
	5720 Series	Fabric Engine 8.7
	7520 Series	Fabric Engine 8.10
	7720 Series	Fabric Engine 8.10
	7830 Series	Fabric Engine 9.3
	VSP 4900 Series	VOSS 8.1
	VSP 7400 Series	VOSS 8.0

**Table 44: Entity MIB product support**

Feature	Product	Release introduced
Entity MIB - Physical Table	4220 Series	Fabric Engine 9.2
	5320 Series	Fabric Engine 8.6
	5420 Series	VOSS 8.4
	5520 Series	VOSS 8.2.5
	5720 Series	Fabric Engine 8.7
	7520 Series	Fabric Engine 8.10
	7720 Series	Fabric Engine 8.10
	7830 Series	Fabric Engine 9.3
	VSP 4900 Series	VOSS 8.1
	VSP 7400 Series	VOSS 8.0
Entity MIB enhancements and integration for the following: <ul style="list-style-type: none"> <li>Physical Table</li> <li>Alias Mapping Table</li> <li>Physical Contains Table</li> <li>Last Change Time object</li> </ul>	4220 Series	Fabric Engine 9.2
	5320 Series	Fabric Engine 8.6
	5420 Series	VOSS 8.4
	5520 Series	VOSS 8.2.5
	5720 Series	Fabric Engine 8.7
	7520 Series	Fabric Engine 8.10
	7720 Series	Fabric Engine 8.10
	7830 Series	Fabric Engine 9.3
	VSP 4900 Series	VOSS 8.1
	VSP 7400 Series	VOSS 8.0

**Table 44: Entity MIB product support (continued)**

Feature	Product	Release introduced
Entity MIB - Logical Table includes the following logical interface entities: <ul style="list-style-type: none"> <li>• VLANs</li> <li>• MLTs</li> <li>• Circuitless IP (CLIP)</li> <li>• Fabric Extend interfaces (logical layer 2 and layer 3 IS-IS interfaces)</li> </ul>	4220 Series	Fabric Engine 9.2
	5320 Series	Fabric Engine 8.6
	5420 Series	VOSS 8.4
	5520 Series	VOSS 8.4
	5720 Series	Fabric Engine 8.7
	7520 Series	Fabric Engine 8.10
	7720 Series	Fabric Engine 8.10
	7830 Series	Fabric Engine 9.3
	VSP 4900 Series	VOSS 8.4
	VSP 7400 Series	VOSS 8.4

**Table 45: Equal Cost Multiple Path for IPv4 product support**

Feature	Product	Release introduced
Equal Cost Multiple Path (ECMP) for IPv4	4220 Series	Fabric Engine 9.2
	5320 Series	Fabric Engine 8.6 For the 5320 Series, only the following models support more than one VRF with IP configuration: <ul style="list-style-type: none"> <li>• 5320-16P-2MXT-2X</li> <li>• 5320-24T-4X-XT</li> <li>• 5320-24T-24S-4XE-XT</li> <li>• 5320-48P-8XE</li> <li>• 5320-48T-8XE</li> </ul>
	5420 Series	VOSS 8.4
	5520 Series	VOSS 8.2.5
	5720 Series	Fabric Engine 8.7
	7520 Series	Fabric Engine 8.10
	7720 Series	Fabric Engine 8.10
	7830 Series	Fabric Engine 9.3
	VSP 4900 Series	VOSS 8.1
	VSP 7400 Series	VOSS 8.0

**Table 46: Equal Cost Multiple Path for IPv6 product support**

Feature	Product	Release introduced
	4220 Series	Not Supported

**Table 46: Equal Cost Multiple Path for IPv6 product support (continued)**

Feature	Product	Release introduced
ECMP for IPv6	5320 Series	Fabric Engine 8.6 For the 5320 Series, only the following models support more than one VRF with IP configuration: <ul style="list-style-type: none"> <li>• 5320-16P-2MXT-2X</li> <li>• 5320-24T-4X-XT</li> <li>• 5320-24T-24S-4XE-XT</li> <li>• 5320-48P-8XE</li> <li>• 5320-48T-8XE</li> </ul>
	5420 Series	VOSS 8.4
	5520 Series	VOSS 8.2.5
	5720 Series	Fabric Engine 8.7
	7520 Series	Fabric Engine 8.10
	7720 Series	Fabric Engine 8.10
	7830 Series	Fabric Engine 9.4
	VSP 4900 Series	VOSS 8.1
	VSP 7400 Series	VOSS 8.0

**Table 47: ECMP Pathlist with Fabric Connect product support**

Feature	Product	Release introduced
ECMP Pathlist with Fabric Connect (IS-IS routes)	4220 Series	Fabric Engine 9.2
	5320 Series	Fabric Engine 8.6
	5420 Series	VOSS 8.4
	5520 Series	VOSS 8.2.5
	5720 Series	Fabric Engine 8.7
	7520 Series	Fabric Engine 8.10
	7720 Series	Fabric Engine 8.10
	7830 Series	Fabric Engine 9.3
	VSP 4900 Series	VOSS 8.1.5
	VSP 7400 Series	VOSS 8.1.5



**Table 47: ECMP Pathlist with Fabric Connect product support (continued)**

Feature	Product	Release introduced
ECMP support for Fabric Extend	4220 Series	Fabric Engine 9.2
	5320 Series	Fabric Engine 8.6
	5420 Series	VOSS 8.4
	5520 Series	VOSS 8.2.5
	5720 Series	Fabric Engine 8.7
	7520 Series	Fabric Engine 8.10
	7720 Series	Fabric Engine 8.10
	7830 Series	Not Supported
	VSP 4900 Series	Not Supported
	VSP 7400 Series	VOSS 8.0

**Table 48: E-Tree and Private VLANs product support**

Feature	Product	Release introduced
E-Tree and Private VLANs	4220 Series	Fabric Engine 9.2
	5320 Series	Fabric Engine 8.6
	5420 Series	VOSS 8.4
	5520 Series	VOSS 8.2.5
	5720 Series	Fabric Engine 8.7
	7520 Series	Fabric Engine 8.10
	7720 Series	Fabric Engine 8.10
	7830 Series	Fabric Engine 9.4
	VSP 4900 Series	VOSS 8.1
	VSP 7400 Series	VOSS 8.0

**Table 48: E-Tree and Private VLANs product support (continued)**

Feature	Product	Release introduced
Routing on Private VLANs	4220 Series	Not Supported
	5320 Series	Fabric Engine 8.6 Not supported on 5320-24T-4X-Xt
	5420 Series	VOSS 8.5
	5520 Series	VOSS 8.5
	5720 Series	Fabric Engine 8.7
	7520 Series	Fabric Engine 8.10
	7720 Series	Fabric Engine 8.10
	7830 Series	Fabric Engine 9.4
	VSP 4900 Series	VOSS 8.5
	VSP 7400 Series	VOSS 8.5

**Table 49: Extensible Authentication Protocol over LAN product support**

Feature	Product	Release introduced
Extensible Authentication Protocol (EAP) and EAP over LAN (EAPoL)	4220 Series	Fabric Engine 9.2
	5320 Series	Fabric Engine 8.6
	5420 Series	VOSS 8.4
	5520 Series	VOSS 8.2.5
	5720 Series	Fabric Engine 8.7
	7520 Series	Fabric Engine 8.10
	7720 Series	Fabric Engine 8.10
	7830 Series	Not Supported
	VSP 4900 Series	VOSS 8.1
	VSP 7400 Series	VOSS 8.0

**Table 49: Extensible Authentication Protocol over LAN product support (continued)**

Feature	Product	Release introduced
EAPoL MHMA-MV	4220 Series	Fabric Engine 9.2
	5320 Series	Fabric Engine 8.6
	5420 Series	VOSS 8.4
	5520 Series	VOSS 8.2.5
	5720 Series	Fabric Engine 8.7
	7520 Series	Fabric Engine 8.10
	7720 Series	Fabric Engine 8.10
	7830 Series	Not Supported
	VSP 4900 Series	VOSS 8.1
	VSP 7400 Series	VOSS 8.0
EAPoL enhancements: Enhanced MHMV, Fail Open VLAN, Guest VLAN	4220 Series	Fabric Engine 9.2
	5320 Series	Fabric Engine 8.6
	5420 Series	VOSS 8.4
	5520 Series	VOSS 8.2.5
	5720 Series	Fabric Engine 8.7
	7520 Series	Fabric Engine 8.10
	7720 Series	Fabric Engine 8.10
	7830 Series	Not Supported
	VSP 4900 Series	VOSS 8.1
	VSP 7400 Series	VOSS 8.0
EAP enhancements: EAP on Flex UNI ports, Auto- sense ports, auto-isid-offset	4220 Series	Fabric Engine 9.2
	5320 Series	Fabric Engine 8.6
	5420 Series	VOSS 8.4
	5520 Series	VOSS 8.3
	5720 Series	Fabric Engine 8.7
	7520 Series	Fabric Engine 8.10
	7720 Series	Fabric Engine 8.10
	7830 Series	Not Supported
	VSP 4900 Series	VOSS 8.3
	VSP 7400 Series	VOSS 8.3

**Table 49: Extensible Authentication Protocol over LAN product support (continued)**

Feature	Product	Release introduced
EAP enhancements: Wake on LAN, Guest I-SID, Fail Open I-SID	4220 Series	Fabric Engine 9.2
	5320 Series	Fabric Engine 8.6
	5420 Series	VOSS 8.4
	5520 Series	VOSS 8.3
	5720 Series	Fabric Engine 8.7
	7520 Series	Fabric Engine 8.10
	7720 Series	Fabric Engine 8.10
	7830 Series	Not Supported
	VSP 4900 Series	VOSS 8.3
	VSP 7400 Series	VOSS 8.3
Non EAPoL MAC RADIUS authentication	4220 Series	Fabric Engine 9.2
	5320 Series	Fabric Engine 8.6
	5420 Series	VOSS 8.4
	5520 Series	VOSS 8.2.5
	5720 Series	Fabric Engine 8.7
	7520 Series	Fabric Engine 8.10
	7720 Series	Fabric Engine 8.10
	7830 Series	Not Supported
	VSP 4900 Series	VOSS 8.1
	VSP 7400 Series	VOSS 8.0
QoS Priority Assignment	4220 Series	Fabric Engine 9.2
	5320 Series	Fabric Engine 8.6
	5420 Series	VOSS 8.4
	5520 Series	VOSS 8.2.5
	5720 Series	Fabric Engine 8.7
	7520 Series	Fabric Engine 8.10
	7720 Series	Fabric Engine 8.10
	7830 Series	Not Supported
	VSP 4900 Series	VOSS 8.1
	VSP 7400 Series	VOSS 8.0

**Table 49: Extensible Authentication Protocol over LAN product support (continued)**

Feature	Product	Release introduced
RADIUS Dynamic User-Based Policies	4220 Series	Fabric Engine 9.2
	5320 Series	Fabric Engine 8.6
	5420 Series	VOSS 8.4
	5520 Series	VOSS 8.3
	5720 Series	Fabric Engine 8.7
	7520 Series	Fabric Engine 8.10
	7720 Series	Fabric Engine 8.10
	7830 Series	Not Supported
	VSP 4900 Series	VOSS 8.3
	VSP 7400 Series	VOSS 8.3
RADIUS Port and VLAN based Attributes	4220 Series	Fabric Engine 9.2
	5320 Series	Fabric Engine 8.6
	5420 Series	VOSS 8.4
	5520 Series	VOSS 8.4
	5720 Series	Fabric Engine 8.7
	7520 Series	Fabric Engine 8.10
	7720 Series	Fabric Engine 8.10
	7830 Series	Not Supported
	VSP 4900 Series	VOSS 8.4
	VSP 7400 Series	VOSS 8.4
Continuity Mode for Fail Open VLAN and Fail Open I-SID	4220 Series	Fabric Engine 9.2
	5320 Series	Fabric Engine 8.6
	5420 Series	Fabric Engine 8.6
	5520 Series	Fabric Engine 8.6
	5720 Series	Fabric Engine 8.7
	7520 Series	Fabric Engine 8.10
	7720 Series	Fabric Engine 8.10
	7830 Series	Not Supported
	VSP 4900 Series	VOSS 8.6
	VSP 7400 Series	VOSS 8.6

**Table 49: Extensible Authentication Protocol over LAN product support (continued)**

Feature	Product	Release introduced
NEAP fallback if EAP authentication fails	4220 Series	Fabric Engine 9.3
	5320 Series	Fabric Engine 9.3
	5420 Series	Fabric Engine 9.3
	5520 Series	Fabric Engine 9.3
	5720 Series	Fabric Engine 9.3
	7520 Series	Fabric Engine 9.3
	7720 Series	Fabric Engine 9.3
	7830 Series	Not Supported
	VSP 4900 Series	VOSS 9.3
	VSP 7400 Series	VOSS 9.3

**Table 50: Extreme Integrated Application Hosting product support**

Feature	Product	Release introduced
Extreme Integrated Application Hosting	4220 Series	Not Supported
	5320 Series	Not Supported
	5420 Series	Not Supported
	5520 Series	Not Supported
	5720 Series	Fabric Engine 8.7 Supported on 5720-24MXW and 5720-48MXW
	7520 Series	Fabric Engine 8.10
	7720 Series	Fabric Engine 8.10
	7830 Series	Not Supported
	VSP 4900 Series	VOSS 8.1.5 Supported on VSP4900-12MXU-12XE and VSP4900-24XE
	VSP 7400 Series	VOSS 8.0

**Table 50: Extreme Integrated Application Hosting product support (continued)**

Feature	Product	Release introduced
Fabric IPsec Gateway virtual machine	4220 Series	Not Supported
	5320 Series	Not Supported
	5420 Series	Not Supported
	5520 Series	Not Supported
	5720 Series	Fabric Engine 8.7 Supported on 5720-24MXW and 5720-48MXW
	7520 Series	Fabric Engine 8.10
	7720 Series	Fabric Engine 8.10
	7830 Series	Not Supported
	VSP 4900 Series	VOSS 8.3 Supported on VSP4900-12MXU-12XE and VSP4900-24XE
	VSP 7400 Series	VOSS 8.2

**Table 51: ExtremeCloud IQ Site Engine backup configuration ZIP file product support**

Feature	Product	Release introduced
ExtremeCloud IQ Site Engine backup configuration ZIP file For more information, see ExtremeCloud IQ Site Engine documentation.	4220 Series	Fabric Engine 9.2
	5320 Series	Fabric Engine 8.6
	5420 Series	VOSS 8.4
	5520 Series	VOSS 8.2.5
	5720 Series	Fabric Engine 8.7
	7520 Series	Fabric Engine 8.10
	7720 Series	Fabric Engine 8.10
	7830 Series	Fabric Engine 9.3
	VSP 4900 Series	VOSS 8.1
	VSP 7400 Series	VOSS 8.0

**Table 52: Fabric Attach product support**

Feature	Product	Release introduced
	4220 Series	Fabric Engine 9.2

**Table 52: Fabric Attach product support (continued)**

Feature	Product	Release introduced
Fabric Attach Server	5320 Series	Fabric Engine 8.6
	5420 Series	VOSS 8.4
	5520 Series	VOSS 8.2.5
	5720 Series	Fabric Engine 8.7
	7520 Series	Fabric Engine 8.10
	7720 Series	Fabric Engine 8.10
	7830 Series	Fabric Engine 9.3
	VSP 4900 Series	VOSS 8.1
	VSP 7400 Series	VOSS 8.0

**Table 53: Fabric Attach Ring with ISW-Series Managed Industrial Ethernet Switch product support**

Feature	Product	Release introduced
Fabric Attach Ring Topology Change Notification	4220 Series	Fabric Engine 9.2
	5320 Series	Fabric Engine 9.0
	5420 Series	Fabric Engine 9.0
	5520 Series	Fabric Engine 9.0
	5720 Series	Fabric Engine 9.0
	7520 Series	Fabric Engine 9.0
	7720 Series	Fabric Engine 9.0
	7830 Series	Not Supported
	VSP 4900 Series	VOSS 9.0
	VSP 7400 Series	VOSS 9.0

**Table 54: Fabric Attach Zero Touch Client Attachment product support**

Feature	Product	Release introduced
	4220 Series	Fabric Engine 9.2



**Table 54: Fabric Attach Zero Touch Client Attachment product support (continued)**

Feature	Product	Release introduced
Fabric Attach Zero Touch Client Attachment	5320 Series	Fabric Engine 8.6
	5420 Series	VOSS 8.4
	5520 Series	VOSS 8.2.5
	5720 Series	Fabric Engine 8.7
	7520 Series	Fabric Engine 8.10
	7720 Series	Fabric Engine 8.10
	7830 Series	Fabric Engine 9.3
	VSP 4900 Series	VOSS 8.1
	VSP 7400 Series	VOSS 8.0

**Table 55: Fabric Extend product support**

Feature	Product	Release introduced
Fabric Extend	4220 Series	Fabric Engine 9.2
	5320 Series	Fabric Engine 8.6
	5420 Series	VOSS 8.4
	5520 Series	VOSS 8.2.5
	5720 Series	Fabric Engine 8.7
	7520 Series	Fabric Engine 8.10
	7720 Series	Fabric Engine 8.10
	7830 Series	Not Supported
	VSP 4900 Series	VOSS 8.1
	VSP 7400 Series	VOSS 8.0

**Table 55: Fabric Extend product support (continued)**

Feature	Product	Release introduced
Fabric Extend over IPsec	4220 Series	Not Supported
	5320 Series	Not Supported
	5420 Series	Not Supported
	5520 Series	Not Supported
	5720 Series	Fabric Engine 8.7 Supported on 5720-24MXW and 5720-48MXW Supported using Fabric IPsec Gateway
	7520 Series	Fabric Engine 8.10 Supported using Fabric IPsec Gateway
	7720 Series	Fabric Engine 8.10 Supported using Fabric IPsec Gateway
	7830 Series	Not Supported
	VSP 4900 Series	VOSS 8.3 Supported on VSP4900-12MXU-12XE and VSP4900-24XE Supported using Fabric IPsec Gateway
	VSP 7400 Series	VOSS 8.2 Supported using Fabric IPsec Gateway

**Table 56: Fabric Extend - IPsec Compression product support**

Feature	Product	Release introduced
IPsec compression	4220 Series	Not Supported
	5320 Series	Not Supported
	5420 Series	Not Supported
	5520 Series	Not Supported
	5720 Series	Fabric Engine 8.7 Supported on 5720-24MXW and 5720-48MXW Supported using Fabric IPsec Gateway
	7520 Series	Fabric Engine 8.10

**Table 56: Fabric Extend - IPsec Compression product support (continued)**

Feature	Product	Release introduced
		Supported using Fabric IPsec Gateway
	7720 Series	Fabric Engine 8.10 Supported using Fabric IPsec Gateway
	7830 Series	Not Supported
	VSP 4900 Series	VOSS 8.7 Supported on VSP4900-12MXU-12XE and VSP4900-24XE Supported using Fabric IPsec Gateway
	VSP 7400 Series	VOSS 8.7 Supported using Fabric IPsec Gateway

**Table 57: Fabric Extend - IPsec Fragmentation before Encryption product support**

Feature	Product	Release introduced
IPsec fragmentation before encryption	4220 Series	Not Supported
	5320 Series	Not Supported
	5420 Series	Not Supported
	5520 Series	Not Supported
	5720 Series	Fabric Engine 8.7 Supported on 5720-24MXW and 5720-48MXW Supported using Fabric IPsec Gateway
	7520 Series	Fabric Engine 8.10 Supported using Fabric IPsec Gateway
	7720 Series	Fabric Engine 8.10 Supported using Fabric IPsec Gateway
	7830 Series	Not Supported
	VSP 4900 Series	VOSS 8.3.1 Supported on VSP4900-12MXU-12XE and VSP4900-24XE Supported using Fabric IPsec Gateway
	VSP 7400 Series	VOSS 8.3.1

**Table 57: Fabric Extend - IPsec Fragmentation before Encryption product support (continued)**

Feature	Product	Release introduced
		Supported using Fabric IPsec Gateway

**Table 58: Fabric Extend - Parallel Tunnel product support**

Feature	Product	Release introduced
Parallel Tunnel Support for Fabric Extend	4220 Series	Fabric Engine 9.2
	5320 Series	Fabric Engine 9.0
	5420 Series	Fabric Engine 9.0
	5520 Series	Fabric Engine 9.0
	5720 Series	Fabric Engine 9.0
	7520 Series	Fabric Engine 8.10
	7720 Series	Fabric Engine 8.10
	7830 Series	Not Supported
	VSP 4900 Series	VOSS 8.8
	VSP 7400 Series	VOSS 8.8

**Table 59: Fabric Extend Tunnel IS-IS MTU Configuration product support**

Feature	Product	Release introduced
Fabric Extend Tunnel IS-IS MTU configuration	4220 Series	Fabric Engine 9.2
	5320 Series	Fabric Engine 8.10.1
	5420 Series	Fabric Engine 8.10.1
	5520 Series	Fabric Engine 8.10.1
	5720 Series	Fabric Engine 8.10.1
	7520 Series	Fabric Engine 8.10.1
	7720 Series	Fabric Engine 8.10.1
	7830 Series	Not Supported
	VSP 4900 Series	VOSS 8.10.1
	VSP 7400 Series	VOSS 8.10.1

**Table 60: Fabric Mode product support**

Feature	Product	Release introduced
	4220 Series	Fabric Engine 9.2

**Table 60: Fabric Mode product support (continued)**

Feature	Product	Release introduced
Fabric BCB mode	5320 Series	Fabric Engine 8.6
	5420 Series	VOSS 8.4
	5520 Series	VOSS 8.2.5
	5720 Series	Fabric Engine 8.7
	7520 Series	Fabric Engine 8.10
	7720 Series	Fabric Engine 8.10
	7830 Series	Fabric Engine 9.3
	VSP 4900 Series	VOSS 8.1
	VSP 7400 Series	VOSS 8.0
Fabric BEB mode	4220 Series	Fabric Engine 9.2
	5320 Series	Fabric Engine 8.6
	5420 Series	VOSS 8.4
	5520 Series	VOSS 8.2.5
	5720 Series	Fabric Engine 8.7
	7520 Series	Fabric Engine 8.10
	7720 Series	Fabric Engine 8.10
	7830 Series	Fabric Engine 9.3
	VSP 4900 Series	VOSS 8.1
	VSP 7400 Series	VOSS 8.0

**Table 61: Fabric RSPAN product support**

Feature	Product	Release introduced
	4220 Series	Fabric Engine 9.2

**Table 61: Fabric RSPAN product support (continued)**

Feature	Product	Release introduced
Fabric RSPAN (Mirror to I-SID)	5320 Series	Fabric Engine 8.6
	5420 Series	VOSS 8.4
	5520 Series	VOSS 8.2.5
	5720 Series	Fabric Engine 8.7
	7520 Series	Fabric Engine 8.10
	7720 Series	Fabric Engine 8.10
	7830 Series	Not Supported
	VSP 4900 Series	VOSS 8.1
	VSP 7400 Series	VOSS 8.0

**Table 62: Factory Default Premier Trial License**

Feature	Product	Release introduced
Ability to extend the Factory Default Premier Trial License	4220 Series	Not Applicable
	5320 Series	Fabric Engine 8.6
	5420 Series	VOSS 8.4
	5520 Series	VOSS 8.4
	5720 Series	Fabric Engine 8.7
	7520 Series	Fabric Engine 8.10
	7720 Series	Fabric Engine 8.10
	7830 Series	Fabric Engine 9.3
	VSP 4900 Series	VOSS 8.4
	VSP 7400 Series	VOSS 8.4

**Table 63: FDB Protected by Port product support**

Feature	Product	Release introduced
	4220 Series	Not Supported
	5320 Series	Fabric Engine 8.6

**Table 63: FDB Protected by Port product support (continued)**

Feature	Product	Release introduced
FDB protected by port (MAC security limit-learning)	5420 Series	VOSS 8.4
	5520 Series	VOSS 8.3
	5720 Series	Fabric Engine 8.7
	7520 Series	Not Supported
	7720 Series	Not Supported
	7830 Series	Not Supported
	VSP 4900 Series	VOSS 8.3
	VSP 7400 Series	Not Supported

**Table 64: Flight Recorder product support**

Feature	Product	Release introduced
Flight Recorder for system monitoring	4220 Series	Fabric Engine 9.2
	5320 Series	Fabric Engine 8.6
	5420 Series	VOSS 8.4
	5520 Series	VOSS 8.2.5
	5720 Series	Fabric Engine 8.7
	7520 Series	Fabric Engine 8.10
	7720 Series	Fabric Engine 8.10
	7830 Series	Fabric Engine 9.3
	VSP 4900 Series	VOSS 8.1
	VSP 7400 Series	VOSS 8.0

**Table 65: Forward Error Correction product support**

Feature	Product	Release introduced
Forward Error Correction (FEC) (configurable)	4220 Series	Not Applicable
	5320 Series	Not Applicable
	5420 Series	VOSS 8.4 Supported on: <ul style="list-style-type: none"> <li>• 5420M-16MW-32P-4YE</li> <li>• 5420M-24T-4YE</li> <li>• 5420M-24W-4YE</li> <li>• 5420M-48T-4YE</li> <li>• 5420M-48W-4YE</li> </ul>
	5520 Series	VOSS 8.2.5

**Table 65: Forward Error Correction product support (continued)**

Feature	Product	Release introduced
		Supported on 5520-VIM-4YE
	5720 Series	Fabric Engine 8.7
	7520 Series	Fabric Engine 8.10
	7720 Series	Fabric Engine 8.10
	7830 Series	Fabric Engine 9.3
	VSP 4900 Series	VOSS 8.1 Supported on VIM5-4YE at 25 Gbps
	VSP 7400 Series	VOSS 8.0





## Features G to I

**Table 66: IEEE 802.3X Pause Frame Transmit product support**

Feature	Product	Release introduced
IEEE 802.3X Pause frame transmit	4220 Series	Fabric Engine 9.2
	5320 Series	Fabric Engine 8.6
	5420 Series	VOSS 8.4
	5520 Series	VOSS 8.2.5
	5720 Series	Fabric Engine 8.7
	7520 Series	Fabric Engine 8.10
	7720 Series	Fabric Engine 8.10
	7830 Series	Not Supported
	VSP 4900 Series	VOSS 8.1
	VSP 7400 Series	VOSS 8.0

**Table 67: Internet Control Message Protocol product support**

Feature	Product	Release introduced
Internet Control Message Protocol (ICMP)	4220 Series	Fabric Engine 9.2 The 4220 Series switches support only a single active VRF with IP configuration.
	5320 Series	Fabric Engine 8.6 For the 5320 Series, only the following models support more than one VRF with IP configuration: <ul style="list-style-type: none"> <li>• 5320-16P-2MXT-2X</li> <li>• 5320-24T-4X-XT</li> <li>• 5320-24T-24S-4XE-XT</li> </ul>

**Table 67: Internet Control Message Protocol product support (continued)**

Feature	Product	Release introduced
		<ul style="list-style-type: none"> <li>5320-48P-8XE</li> <li>5320-48T-8XE</li> </ul>
	5420 Series	VOSS 8.4
	5520 Series	VOSS 8.2.5
	5720 Series	Fabric Engine 8.7
	7520 Series	Fabric Engine 8.10
	7720 Series	Fabric Engine 8.10
	7830 Series	Fabric Engine 9.3
	VSP 4900 Series	VOSS 8.1
	VSP 7400 Series	VOSS 8.0
ICMP broadcast and multicast enable or disable	4220 Series	Fabric Engine 9.2 IPv4 only The 4220 Series switches support only a single active VRF with IP configuration.
	5320 Series	For the 5320 Series, only the following models support more than one VRF with IP configuration: <ul style="list-style-type: none"> <li>5320-16P-2MXT-2X</li> <li>5320-24T-4X-XT</li> <li>5320-24T-24S-4XE-XT</li> <li>5320-48P-8XE</li> <li>5320-48T-8XE</li> </ul>
	5420 Series	VOSS 8.4
	5520 Series	VOSS 8.2.5
	5720 Series	Fabric Engine 8.7
	7520 Series	Fabric Engine 8.10
	7720 Series	Fabric Engine 8.10
	7830 Series	Fabric Engine 9.3
	VSP 4900 Series	VOSS 8.1
	VSP 7400 Series	VOSS 8.0

**Table 67: Internet Control Message Protocol product support (continued)**

Feature	Product	Release introduced
Fragmented ICMP Packet Filtering for IPv4	4220 Series	Fabric Engine 9.2 The 4220 Series switches support only a single active VRF with IP configuration.
	5320 Series	For the 5320 Series, only the following models support more than one VRF with IP configuration: <ul style="list-style-type: none"> <li>• 5320-16P-2MXT-2X</li> <li>• 5320-24T-4X-XT</li> <li>• 5320-24T-24S-4XE-XT</li> <li>• 5320-48P-8XE</li> <li>• 5320-48T-8XE</li> </ul>
	5420 Series	VOSS 8.5
	5520 Series	VOSS 8.5
	5720 Series	Fabric Engine 8.7
	7520 Series	Fabric Engine 8.10
	7720 Series	Fabric Engine 8.10
	7830 Series	Fabric Engine 9.3
	VSP 4900 Series	VOSS 8.5
	VSP 7400 Series	VOSS 8.5

**Table 67: Internet Control Message Protocol product support (continued)**

Feature	Product	Release introduced
Fragmented ICMP Packet Filtering for IPv6	4220 Series	Not Supported
	5320 Series	For the 5320 Series, only the following models support more than one VRF with IP configuration: <ul style="list-style-type: none"> <li>• 5320-16P-2MXT-2X</li> <li>• 5320-24T-4X-XT</li> <li>• 5320-24T-24S-4XE-XT</li> <li>• 5320-48P-8XE</li> <li>• 5320-48T-8XE</li> </ul>
	5420 Series	VOSS 8.5
	5520 Series	VOSS 8.5
	5720 Series	Fabric Engine 8.7
	7520 Series	Fabric Engine 8.10
	7720 Series	Fabric Engine 8.10
	7830 Series	Fabric Engine 9.4
	VSP 4900 Series	VOSS 8.5
	VSP 7400 Series	VOSS 8.5

**Table 68: Internet Group Management Protocol product support**

Feature	Product	Release introduced
Internet Group Management Protocol (IGMP), including virtualization	4220 Series	Fabric Engine 9.2 The 4220 Series switches support only a single active VRF with IP configuration.
	5320 Series	Fabric Engine 8.6 For the 5320 Series, only the following models support more than one VRF with IP configuration: <ul style="list-style-type: none"> <li>• 5320-16P-2MXT-2X</li> <li>• 5320-24T-4X-XT</li> <li>• 5320-24T-24S-4XE-XT</li> </ul>

**Table 68: Internet Group Management Protocol product support (continued)**

Feature	Product	Release introduced
		<ul style="list-style-type: none"> <li>5320-48P-8XE</li> <li>5320-48T-8XE</li> </ul>
	5420 Series	VOSS 8.4
	5520 Series	VOSS 8.2.5
	5720 Series	Fabric Engine 8.7
	7520 Series	Fabric Engine 8.10
	7720 Series	Fabric Engine 8.10
	7830 Series	Fabric Engine 9.4
	VSP 4900 Series	VOSS 8.1
	VSP 7400 Series	VOSS 8.0

**Table 69: Internet Key Exchange product support**

Feature	Product	Release introduced
Internet Key Exchange (IKE) v2	4220 Series	Fabric Engine 9.2
	5320 Series	Fabric Engine 8.6
	5420 Series	VOSS 8.4
	5520 Series	VOSS 8.2.5
	5720 Series	Fabric Engine 8.7
	7520 Series	Fabric Engine 8.10
	7720 Series	Fabric Engine 8.10
	7830 Series	Fabric Engine 9.3
	VSP 4900 Series	VOSS 8.1
	VSP 7400 Series	VOSS 8.0

**Table 70: Internet Protocol Flow Information eXport (IPFIX) product support**

Feature	Product	Release introduced
Internet Protocol Flow Information eXport (IPFIX)	4220 Series	Not Supported
	5320 Series	Fabric Engine 8.6 Supported on 5320-48P-8XE,

**Table 70: Internet Protocol Flow Information eXport (IPFIX) product support (continued)**

Feature	Product	Release introduced
		5320-48T-8XE, and 5320-24T-24S-4XE-XT
	5420 Series	VOSS 8.4
	5520 Series	VOSS 8.2.5
	5720 Series	Fabric Engine 8.7
	7520 Series	Fabric Engine 8.10
	7720 Series	Fabric Engine 8.10
	7830 Series	Fabric Engine 9.4
	VSP 4900 Series	Not Supported
	VSP 7400 Series	VOSS 8.0
IPFIX — using Segmented Management Instance VLAN as source IP	4220 Series	Not Supported
	5320 Series	Fabric Engine 8.8 Supported on 5320-48P-8XE, 5320-48T-8XE, and 5320-24T-24S-4XE-XT
	5420 Series	Fabric Engine 8.8
	5520 Series	Fabric Engine 8.8
	5720 Series	Fabric Engine 8.8
	7520 Series	Fabric Engine 8.10
	7720 Series	Fabric Engine 8.10
	7830 Series	Fabric Engine 9.4
	VSP 4900 Series	Not Supported
	VSP 7400 Series	VOSS 8.8

**Table 70: Internet Protocol Flow Information eXport (IPFIX) product support (continued)**

Feature	Product	Release introduced
IPFIX — using Segmented Management Instance CLIP (GRT and VRF) as source IP	4220 Series	Not Supported
	5320 Series	Fabric Engine 8.8 Supported on 5320-48P-8XE, 5320-48T-8XE, and 5320-24T-24S-4XE-XT
	5420 Series	Fabric Engine 8.8
	5520 Series	Fabric Engine 8.8
	5720 Series	Fabric Engine 8.8
	7520 Series	Fabric Engine 8.10
	7720 Series	Fabric Engine 8.10
	7830 Series	Fabric Engine 9.4
	VSP 4900 Series	Not Supported
	VSP 7400 Series	VOSS 8.8
Ability to configure IPFIX per UNI port or on all NNIs	4220 Series	Not Supported
	5320 Series	Fabric Engine 9.4 Supported on 5320-48P-8XE, 5320-48T-8XE, and 5320-24T-24S-4XE-XT
	5420 Series	Fabric Engine 9.4
	5520 Series	Fabric Engine 9.4
	5720 Series	Fabric Engine 9.4
	7520 Series	Fabric Engine 9.4
	7720 Series	Fabric Engine 9.4
	7830 Series	Fabric Engine 9.4
	VSP 4900 Series	Not Supported
	VSP 7400 Series	VOSS 9.4

**Table 71: Inter-VSN Routing product support**

Feature	Product	Release introduced
	4220 Series	Fabric Engine 9.2

**Table 71: Inter-VSN Routing product support (continued)**

Feature	Product	Release introduced
Inter-VSN routing (IPv4)	5320 Series	Fabric Engine 8.6
	5420 Series	VOSS 8.4
	5520 Series	VOSS 8.2.5
	5720 Series	Fabric Engine 8.7
	7520 Series	Fabric Engine 8.10
	7720 Series	Fabric Engine 8.10
	7830 Series	Fabric Engine 9.3
	VSP 4900 Series	VOSS 8.1
	VSP 7400 Series	VOSS 8.0
Inter-VSN routing (IPv6)	4220 Series	Not Supported
	5320 Series	Fabric Engine 8.6
	5420 Series	VOSS 8.4
	5520 Series	VOSS 8.2.5
	5720 Series	Fabric Engine 8.7
	7520 Series	Fabric Engine 8.10
	7720 Series	Fabric Engine 8.10
	7830 Series	Not Supported
	VSP 4900 Series	VOSS 8.1
	VSP 7400 Series	VOSS 8.0

**Table 72: IP Phone product support**

Feature	Product	Release introduced
	4220 Series	Fabric Engine 9.2



**Table 72: IP Phone product support (continued)**

Feature	Product	Release introduced
IP Phone Support	5320 Series	Fabric Engine 8.6
	5420 Series	VOSS 8.4
	5520 Series	VOSS 8.3
	5720 Series	Fabric Engine 8.7
	7520 Series	Fabric Engine 8.10
	7720 Series	Fabric Engine 8.10
	7830 Series	Not Supported
	VSP 4900 Series	VOSS 8.3
	VSP 7400 Series	VOSS 8.3

**Table 73: IP Multicast over Fabric Connect product support**

Feature	Product	Release introduced
IP Multicast over Fabric Connect	4220 Series	Fabric Engine 9.2 The 4220 Series switches support only a single active VRF with IP configuration.
	5320 Series	Fabric Engine 8.6 For the 5320 Series, only the following models support more than one VRF with IP configuration: <ul style="list-style-type: none"> <li>• 5320-16P-2MXT-2X</li> <li>• 5320-24T-4X-XT</li> <li>• 5320-24T-24S-4XE-XT</li> <li>• 5320-48P-8XE</li> <li>• 5320-48T-8XE</li> </ul>
	5420 Series	VOSS 8.4
	5520 Series	VOSS 8.2.5
	5720 Series	Fabric Engine 8.7
	7520 Series	Fabric Engine 8.10
	7720 Series	Fabric Engine 8.10
	7830 Series	Fabric Engine 9.4
	VSP 4900 Series	VOSS 8.1
	VSP 7400 Series	VOSS 8.0

**Table 73: IP Multicast over Fabric Connect product support (continued)**

Feature	Product	Release introduced
IP Multicast config-lite for Fabric Connect  <b>Note:</b> There is no limit on VRF membership.	4220 Series	Fabric Engine 9.2
	5320 Series	Fabric Engine 8.8
	5420 Series	Fabric Engine 8.8
	5520 Series	Fabric Engine 8.8
	5720 Series	Fabric Engine 8.8
	7520 Series	Fabric Engine 8.10
	7720 Series	Fabric Engine 8.10
	7830 Series	Not Supported
	VSP 4900 Series	VOSS 8.8
	VSP 7400 Series	VOSS 8.8
IP SPB Multicast Policy	4220 Series	Fabric Engine 9.2
	5320 Series	Fabric Engine 8.8
	5420 Series	Fabric Engine 8.8
	5520 Series	Fabric Engine 8.8
	5720 Series	Fabric Engine 8.8
	7520 Series	Fabric Engine 8.10
	7720 Series	Fabric Engine 8.10
	7830 Series	Fabric Engine 9.4
	VSP 4900 Series	VOSS 8.8
	VSP 7400 Series	VOSS 8.8
TTL handling of bridged traffic with routed SPB IP Multicast	4220 Series	Fabric Engine 9.4
	5320 Series	Fabric Engine 9.4
	5420 Series	Fabric Engine 9.4
	5520 Series	Fabric Engine 9.4
	5720 Series	Fabric Engine 9.4
	7520 Series	Fabric Engine 9.4
	7720 Series	Fabric Engine 9.4
	7830 Series	Fabric Engine 9.4
	VSP 4900 Series	VOSS 9.4
	VSP 7400 Series	VOSS 9.4

**Table 73: IP Multicast over Fabric Connect product support (continued)**

Feature	Product	Release introduced
Universal Plug and Play (uPnP) Filtering	4220 Series	Fabric Engine 9.2
	5320 Series	Fabric Engine 8.6
	5420 Series	VOSS 8.4
	5520 Series	VOSS 8.3
	5720 Series	Fabric Engine 8.7
	7520 Series	Fabric Engine 8.10
	7720 Series	Fabric Engine 8.10
	7830 Series	Fabric Engine 9.4
	VSP 4900 Series	VOSS 8.3
	VSP 7400 Series	VOSS 8.3

**Table 74: IP Route Policies product support**

Feature	Product	Release introduced
IP route policies	4220 Series	Not Supported
	5320 Series	Fabric Engine 8.6
	5420 Series	VOSS 8.4
	5520 Series	VOSS 8.2.5
	5720 Series	Fabric Engine 8.7
	7520 Series	Fabric Engine 8.10
	7720 Series	Fabric Engine 8.10
	7830 Series	Fabric Engine 9.3
	VSP 4900 Series	VOSS 8.1
	VSP 7400 Series	VOSS 8.0

**Table 75: IP Shortcuts product support**

Feature	Product	Release introduced
IP Shortcut routing including ECMP	4220 Series	Fabric Engine 9.2 The 4220 Series switches support only a single active VRF with IP configuration.
	5320 Series	Fabric Engine 8.6 For the 5320 Series, only the following models support

**Table 75: IP Shortcuts product support (continued)**

Feature	Product	Release introduced
		more than one VRF with IP configuration: <ul style="list-style-type: none"> <li>• 5320-16P-2MXT-2X</li> <li>• 5320-24T-4X-XT</li> <li>• 5320-24T-24S-4XE-XT</li> <li>• 5320-48P-8XE</li> <li>• 5320-48T-8XE</li> </ul>
	5420 Series	VOSS 8.4
	5520 Series	VOSS 8.2.5
	5720 Series	Fabric Engine 8.7
	7520 Series	Fabric Engine 8.10
	7720 Series	Fabric Engine 8.10
	7830 Series	Fabric Engine 9.3
	VSP 4900 Series	VOSS 8.1
	VSP 7400 Series	VOSS 8.0
IPv6 Shortcut routing	4220 Series	Not Supported
	5320 Series	Fabric Engine 8.6 For the 5320 Series, only the following models support more than one VRF with IP configuration: <ul style="list-style-type: none"> <li>• 5320-16P-2MXT-2X</li> <li>• 5320-24T-4X-XT</li> <li>• 5320-24T-24S-4XE-XT</li> <li>• 5320-48P-8XE</li> <li>• 5320-48T-8XE</li> </ul>
	5420 Series	VOSS 8.4
	5520 Series	VOSS 8.2.5
	5720 Series	Fabric Engine 8.7
	7520 Series	Fabric Engine 8.10
	7720 Series	Fabric Engine 8.10
	7830 Series	Fabric Engine 9.4
	VSP 4900 Series	VOSS 8.1
	VSP 7400 Series	VOSS 8.0

**Table 75: IP Shortcuts product support (continued)**

Feature	Product	Release introduced
IPv4 IS-IS accept policies	4220 Series	Fabric Engine 9.2 The 4220 Series switches support only a single active VRF with IP configuration.
	5320 Series	Fabric Engine 8.6 For the 5320 Series, only the following models support more than one VRF with IP configuration: <ul style="list-style-type: none"> <li>• 5320-16P-2MXT-2X</li> <li>• 5320-24T-4X-XT</li> <li>• 5320-24T-24S-4XE-XT</li> <li>• 5320-48P-8XE</li> <li>• 5320-48T-8XE</li> </ul>
	5420 Series	VOSS 8.4
	5520 Series	VOSS 8.2.5
	5720 Series	Fabric Engine 8.7
	7520 Series	Fabric Engine 8.10
	7720 Series	Fabric Engine 8.10
	7830 Series	Fabric Engine 9.4
	VSP 4900 Series	VOSS 8.1
	VSP 7400 Series	VOSS 8.0

**Table 75: IP Shortcuts product support (continued)**

Feature	Product	Release introduced
IPv6 IS-IS accept policies	4220 Series	Not Supported
	5320 Series	Fabric Engine 8.6 For the 5320 Series, only the following models support more than one VRF with IP configuration: <ul style="list-style-type: none"> <li>• 5320-16P-2MXT-2X</li> <li>• 5320-24T-4X-XT</li> <li>• 5320-24T-24S-4XE-XT</li> <li>• 5320-48P-8XE</li> <li>• 5320-48T-8XE</li> </ul>
	5420 Series	VOSS 8.4
	5520 Series	VOSS 8.2.5
	5720 Series	Fabric Engine 8.7
	7520 Series	Fabric Engine 8.10
	7720 Series	Fabric Engine 8.10
	7830 Series	Not Supported
	VSP 4900 Series	VOSS 8.1
	VSP 7400 Series	VOSS 8.0

**Table 76: IP Source Guard product support**

Feature	Product	Release introduced
IP Source Guard (IPv4)	4220 Series	Fabric Engine 9.2
	5320 Series	Fabric Engine 8.6
	5420 Series	VOSS 8.4
	5520 Series	VOSS 8.2.5
	5720 Series	Fabric Engine 8.7
	7520 Series	Fabric Engine 8.10
	7720 Series	Fabric Engine 8.10
	7830 Series	Not Supported
	VSP 4900 Series	VOSS 8.1
	VSP 7400 Series	VOSS 8.0

**Table 76: IP Source Guard product support (continued)**

Feature	Product	Release introduced
IP Source Guard (IPv6)	4220 Series	Fabric Engine 9.2
	5320 Series	Fabric Engine 8.6
	5420 Series	VOSS 8.4
	5520 Series	VOSS 8.2.5
	5720 Series	Fabric Engine 8.7
	7520 Series	Fabric Engine 8.10
	7720 Series	Fabric Engine 8.10
	7830 Series	Not Supported
	VSP 4900 Series	VOSS 8.1
	VSP 7400 Series	VOSS 8.0

**Table 77: IP Source Routing product support**

Feature	Product	Release introduced
IP Source Routing enable or disable	4220 Series	Fabric Engine 9.2 The 4220 Series switches support only a single active VRF with IP configuration.
	5320 Series	Fabric Engine 8.6 For the 5320 Series, only the following models support more than one VRF with IP configuration: <ul style="list-style-type: none"> <li>• 5320-16P-2MXT-2X</li> <li>• 5320-24T-4X-XT</li> <li>• 5320-24T-24S-4XE-XT</li> </ul>

**Table 77: IP Source Routing product support (continued)**

Feature	Product	Release introduced
		<ul style="list-style-type: none"> <li>5320-48P-8XE</li> <li>5320-48T-8XE</li> </ul>
	5420 Series	VOSS 8.4
	5520 Series	VOSS 8.2.5
	5720 Series	Fabric Engine 8.7
	7520 Series	Fabric Engine 8.10
	7720 Series	Fabric Engine 8.10
	7830 Series	Not Supported
	VSP 4900 Series	VOSS 8.1
	VSP 7400 Series	VOSS 8.0

**Table 78: IPsec product support**

Feature	Product	Release introduced
IPsec transport mode	4220 Series	Fabric Engine 9.2
	5320 Series	Fabric Engine 8.6
	5420 Series	VOSS 8.4
	5520 Series	VOSS 8.2.5
	5720 Series	Fabric Engine 8.7
	7520 Series	Fabric Engine 8.10
	7720 Series	Fabric Engine 8.10
	7830 Series	Fabric Engine 9.3
	VSP 4900 Series	VOSS 8.1
	VSP 7400 Series	VOSS 8.0

**Table 79: IPsec NAT-T product support**

Feature	Product	Release introduced
IPsec NAT-T	4220 Series	Not Supported
	5320 Series	Not Supported
	5420 Series	Not Supported
	5520 Series	Not Supported
	5720 Series	Fabric Engine 8.7 Supported on 5720-24MXW and 5720-48MXW



**Table 79: IPsec NAT-T product support (continued)**

Feature	Product	Release introduced
		Supported using Fabric IPsec Gateway
	7520 Series	Fabric Engine 8.10 Supported using Fabric IPsec Gateway
	7720 Series	Fabric Engine 8.10 Supported using Fabric IPsec Gateway
	7830 Series	Not Supported
	VSP 4900 Series	VOSS 8.3 Supported on VSP4900-12MXU-12XE and VSP4900-24XE Supported using Fabric IPsec Gateway
	VSP 7400 Series	VOSS 8.2 Supported using Fabric IPsec Gateway

**Table 80: IPv4 Interface state product support**

Feature	Product	Release introduced
Ability to Enable or Disable an IP Interface	4220 Series	Fabric Engine 9.2
	5320 Series	Fabric Engine 8.10
	5420 Series	Fabric Engine 8.10
	5520 Series	Fabric Engine 8.10
	5720 Series	Fabric Engine 8.10
	7520 Series	Fabric Engine 8.10
	7720 Series	Fabric Engine 8.10
	7830 Series	Fabric Engine 9.3
	VSP 4900 Series	VOSS 8.10
	VSP 7400 Series	VOSS 8.10

**Table 81: IPv6-in-IPv4 tunnels product support**

Feature	Product	Release introduced
IPv6-in-IPv4 tunnels	4220 Series	Not Supported
	5320 Series	Fabric Engine 8.6

**Table 81: IPv6-in-IPv4 tunnels product support (continued)**

Feature	Product	Release introduced
		Not supported on 5320-16P-2MXT-2X
	5420 Series	VOSS 8.4
	5520 Series	VOSS 8.2.5
	5720 Series	Fabric Engine 8.7
	7520 Series	Fabric Engine 8.10
	7720 Series	Fabric Engine 8.10
	7830 Series	Not Supported
	VSP 4900 Series	VOSS 8.1
	VSP 7400 Series	VOSS 8.0

**Table 82: IPv6 Router Advertisement (RA) Guard product support**

Feature	Product	Release introduced
IPv6 Router Advertisement (RA) Guard	4220 Series	Fabric Engine 9.2
	5320 Series	Fabric Engine 8.6
	5420 Series	VOSS 8.4
	5520 Series	VOSS 8.2.5
	5720 Series	Fabric Engine 8.7
	7520 Series	Fabric Engine 8.10
	7720 Series	Fabric Engine 8.10
	7830 Series	Not Supported
	VSP 4900 Series	VOSS 8.1
	VSP 7400 Series	VOSS 8.0

**Table 83: IQ Agent product support**

Feature	Product	Release introduced
	4220 Series	Fabric Engine 9.2

**Table 83: IQ Agent product support (continued)**

Feature	Product	Release introduced
ExtremeCloud IQ Agent	5320 Series	Fabric Engine 8.6
	5420 Series	VOSS 8.4
	5520 Series	VOSS 8.2.5
	5720 Series	Fabric Engine 8.7
	7520 Series	Fabric Engine 8.10
	7720 Series	Fabric Engine 8.10
	7830 Series	Fabric Engine 9.3
	VSP 4900 Series	VOSS 8.2 Supported on: <ul style="list-style-type: none"> <li>• VSP4900-48P</li> <li>• VIM5-4YE</li> <li>• VIM5-4X</li> <li>• VIM5-4XE</li> </ul> VOSS 8.2.5 Supported on: <ul style="list-style-type: none"> <li>• VSP4900-24S</li> <li>• VSP4900-24XE</li> <li>• VSP4900-12MXU-12XE</li> <li>• VIM5-2Q</li> </ul>
	VSP 7400 Series	VOSS 8.2
Unified Metrics and Events Reporting	4220 Series	Fabric Engine 9.2
	5320 Series	Fabric Engine 8.8
	5420 Series	Fabric Engine 8.8
	5520 Series	Fabric Engine 8.8
	5720 Series	Fabric Engine 8.8
	7520 Series	Fabric Engine 8.10
	7720 Series	Fabric Engine 8.10
	7830 Series	Fabric Engine 9.3
	VSP 4900 Series	Not Supported
	VSP 7400 Series	Not Supported

**Table 84: IS-IS product support**

Feature	Product	Release introduced
	4220 Series	Fabric Engine 9.2

**Table 84: IS-IS product support (continued)**

Feature	Product	Release introduced
IS-IS authentication with SHA-256	5320 Series	Fabric Engine 8.6
	5420 Series	VOSS 8.4
	5520 Series	VOSS 8.2.5
	5720 Series	Fabric Engine 8.7
	7520 Series	Fabric Engine 8.10
	7720 Series	Fabric Engine 8.10
	7830 Series	Fabric Engine 9.3
	VSP 4900 Series	VOSS 8.1
	VSP 7400 Series	VOSS 8.0
Suspend duplicate system ID detection	4220 Series	Fabric Engine 9.2
	5320 Series	Fabric Engine 8.6
	5420 Series	VOSS 8.4
	5520 Series	VOSS 8.2.5
	5720 Series	Fabric Engine 8.7
	7520 Series	Fabric Engine 8.10
	7720 Series	Fabric Engine 8.10
	7830 Series	Fabric Engine 9.3
	VSP 4900 Series	VOSS 8.1
	VSP 7400 Series	VOSS 8.0
Multiple IS-IS parallel adjacencies	4220 Series	Fabric Engine 9.2
	5320 Series	Fabric Engine 8.6
	5420 Series	VOSS 8.4
	5520 Series	VOSS 8.2.5
	5720 Series	Fabric Engine 8.7
	7520 Series	Fabric Engine 8.10
	7720 Series	Fabric Engine 8.10
	7830 Series	Fabric Engine 9.3
	VSP 4900 Series	VOSS 8.1
	VSP 7400 Series	VOSS 8.0

**Table 84: IS-IS product support (continued)**

Feature	Product	Release introduced
IS-IS tags for external routes (BGP and OSPF)	4220 Series	Not Supported
	5320 Series	Fabric Engine 9.1
	5420 Series	Fabric Engine 9.1
	5520 Series	Fabric Engine 9.1
	5720 Series	Fabric Engine 9.1
	7520 Series	Fabric Engine 9.1
	7720 Series	Fabric Engine 9.1
	7830 Series	Fabric Engine 9.3
	VSP 4900 Series	VOSS 9.1
	VSP 7400 Series	VOSS 9.1

**Table 85: IS-IS Hello Padding**

Feature	Product	Release introduced
IS-IS hello padding (ability to disable)	4220 Series	Fabric Engine 9.2
	5320 Series	Fabric Engine 8.6
	5420 Series	VOSS 8.4.2
	5520 Series	VOSS 8.2.7
	5720 Series	Fabric Engine 8.7
	7520 Series	Fabric Engine 8.10
	7720 Series	Fabric Engine 8.10
	7830 Series	Fabric Engine 9.3
	VSP 4900 Series	VOSS 8.2.7
	VSP 7400 Series	VOSS 8.2.7



## Features J to L

**Table 86: Key Health Indicator product support**

Feature	Product	Release introduced
Key Health Indicator (KHI)	4220 Series	Fabric Engine 9.2
	5320 Series	Fabric Engine 8.6
	5420 Series	VOSS 8.4
	5520 Series	VOSS 8.2.5
	5720 Series	Fabric Engine 8.7
	7520 Series	Fabric Engine 8.10
	7720 Series	Fabric Engine 8.10
	7830 Series	Fabric Engine 9.3
	VSP 4900 Series	VOSS 8.1
	VSP 7400 Series	VOSS 8.0

**Table 87: Layer 2 Video Surveillance install script product support**

Feature	Product	Release introduced
Layer 2 Video Surveillance install script	4220 Series	Not Supported
	5320 Series	Not Supported
	5420 Series	Not Supported
	5520 Series	Not Supported
	5720 Series	Not Supported
	7520 Series	Not Supported
	7720 Series	Not Supported
	7830 Series	Not Supported
	VSP 4900 Series	VOSS 8.1

**Table 87: Layer 2 Video Surveillance install script product support (continued)**

Feature	Product	Release introduced
		To support this feature, VIM installation is mandatory in VSP4900-48P
	VSP 7400 Series	Not Supported

**Table 88: Layer 2 VSN product support**

Feature	Product	Release introduced
Equal Cost Trees (ECT)	4220 Series	Fabric Engine 9.2
	5320 Series	Fabric Engine 8.6
	5420 Series	VOSS 8.4
	5520 Series	VOSS 8.2.5
	5720 Series	Fabric Engine 8.7
	7520 Series	Fabric Engine 8.10
	7720 Series	Fabric Engine 8.10
	7830 Series	Fabric Engine 9.3
	VSP 4900 Series	VOSS 8.1
	VSP 7400 Series	VOSS 8.0
Layer 2 Virtual Service Network (VSN)	4220 Series	Fabric Engine 9.2
	5320 Series	Fabric Engine 8.6
	5420 Series	VOSS 8.4
	5520 Series	VOSS 8.2.5
	5720 Series	Fabric Engine 8.7
	7520 Series	Fabric Engine 8.10
	7720 Series	Fabric Engine 8.10
	7830 Series	Fabric Engine 9.3
	VSP 4900 Series	VOSS 8.1
	VSP 7400 Series	VOSS 8.0

**Table 88: Layer 2 VSN product support (continued)**

Feature	Product	Release introduced
Switched UNI	4220 Series	Fabric Engine 9.2
	5320 Series	Fabric Engine 8.6
	5420 Series	VOSS 8.4
	5520 Series	VOSS 8.2.5
	5720 Series	Fabric Engine 8.7
	7520 Series	Fabric Engine 8.10
	7720 Series	Fabric Engine 8.10
	7830 Series	Fabric Engine 9.3
	VSP 4900 Series	VOSS 8.1
	VSP 7400 Series	VOSS 8.0
Transparent Port UNI (T-UNI)	4220 Series	Fabric Engine 9.2
	5320 Series	Fabric Engine 8.6
	5420 Series	VOSS 8.4
	5520 Series	VOSS 8.2.5
	5720 Series	Fabric Engine 8.7
	7520 Series	Fabric Engine 8.10
	7720 Series	Fabric Engine 8.10
	7830 Series	Not Supported
	VSP 4900 Series	VOSS 8.1
	VSP 7400 Series	VOSS 8.0

**Table 89: Layer 3 Video Surveillance install script product support**

Feature	Product	Release introduced
Layer 3 Video Surveillance install script (formerly known as the run vms endura script)	4220 Series	Not Supported
	5320 Series	Not Supported
	5420 Series	Not Supported
	5520 Series	Not Supported
	5720 Series	Not Supported
	7520 Series	Not Supported
	7720 Series	Not Supported
	7830 Series	Not Supported
	VSP 4900 Series	VOSS 8.1



**Table 89: Layer 3 Video Surveillance install script product support (continued)**

Feature	Product	Release introduced
		To support this feature, VIM installation is mandatory in VSP4900-48P
	VSP 7400 Series	Not Supported

**Table 90: Layer 3 VSN product support**

Feature	Product	Release introduced
Layer 3 VSN	4220 Series	Fabric Engine 9.2 The 4220 Series switches support only a single active VRF with IP configuration.
	5320 Series	Fabric Engine 8.6 For the 5320 Series, only the following models support more than one VRF with IP configuration: <ul style="list-style-type: none"> <li>• 5320-16P-2MXT-2X</li> <li>• 5320-24T-4X-XT</li> <li>• 5320-24T-24S-4XE-XT</li> <li>• 5320-48P-8XE</li> <li>• 5320-48T-8XE</li> </ul>
	5420 Series	VOSS 8.4
	5520 Series	VOSS 8.2.5
	5720 Series	Fabric Engine 8.7
	7520 Series	Fabric Engine 8.10
	7720 Series	Fabric Engine 8.10
	7830 Series	Fabric Engine 9.3
	VSP 4900 Series	VOSS 8.1
	VSP 7400 Series	VOSS 8.0

**Table 91: Link Debounce for WAN Links**

Feature	Product	Release introduced
	4220 Series	Fabric Engine 9.2

**Table 91: Link Debounce for WAN Links (continued)**

Feature	Product	Release introduced
Link Debounce	5320 Series	Fabric Engine 8.6
	5420 Series	VOSS 8.5
	5520 Series	VOSS 8.5
	5720 Series	Fabric Engine 8.7
	7520 Series	Fabric Engine 8.10
	7720 Series	Fabric Engine 8.10
	7830 Series	Not Supported
	VSP 4900 Series	VOSS 8.4.2
	VSP 7400 Series	VOSS 8.4.2

**Table 92: Link Layer Discovery Protocol product support**

Feature	Product	Release introduced
Industry Standard Discovery Protocol (ISDP) (CDP compatible)	4220 Series	Fabric Engine 9.2
	5320 Series	Fabric Engine 8.6
	5420 Series	VOSS 8.4
	5520 Series	VOSS 8.2.5
	5720 Series	Fabric Engine 8.7
	7520 Series	Fabric Engine 8.10
	7720 Series	Fabric Engine 8.10
	7830 Series	Fabric Engine 9.3
	VSP 4900 Series	VOSS 8.1
	VSP 7400 Series	VOSS 8.0
Link Layer Discovery Protocol (LLDP)	4220 Series	Fabric Engine 9.2
	5320 Series	Fabric Engine 8.6
	5420 Series	VOSS 8.4
	5520 Series	VOSS 8.2.5
	5720 Series	Fabric Engine 8.7
	7520 Series	Fabric Engine 8.10
	7720 Series	Fabric Engine 8.10
	7830 Series	Fabric Engine 9.3
	VSP 4900 Series	VOSS 8.1
	VSP 7400 Series	VOSS 8.0

**Table 92: Link Layer Discovery Protocol product support (continued)**

Feature	Product	Release introduced
Link Layer Discovery Protocol-Media Endpoint Discovery	4220 Series	Fabric Engine 9.2
	5320 Series	Fabric Engine 8.6
	5420 Series	VOSS 8.4
	5520 Series	VOSS 8.2.5
	5720 Series	Fabric Engine 8.7
	7520 Series	Fabric Engine 8.10
	7720 Series	Fabric Engine 8.10
	7830 Series	Fabric Engine 9.3
	VSP 4900 Series	VOSS 8.1
	VSP 7400 Series	VOSS 8.0

**Table 93: Link-state tracking (LST) product support**

Feature	Product	Release introduced
Link-state tracking (LST)	4220 Series	Fabric Engine 9.2
	5320 Series	Fabric Engine 8.6
	5420 Series	VOSS 8.4
	5520 Series	VOSS 8.2.5
	5720 Series	Fabric Engine 8.7
	7520 Series	Fabric Engine 8.10
	7720 Series	Fabric Engine 8.10
	7830 Series	Fabric Engine 9.3
	VSP 4900 Series	VOSS 8.1
	VSP 7400 Series	VOSS 8.0

**Table 94: Linux kernel version product support**

Feature	Product	Release introduced
	4220 Series	5.10 as of Fabric Engine 9.2

**Table 94: Linux kernel version product support (continued)**

Feature	Product	Release introduced
Linux kernel version	5320 Series	5.10 as of Fabric Engine 9.1
	5420 Series	5.10 as of Fabric Engine 9.1
	5520 Series	5.10 as of Fabric Engine 9.1
	5720 Series	5.10 as of Fabric Engine 9.1
	7520 Series	5.10 as of Fabric Engine 9.1
	7720 Series	5.10 as of Fabric Engine 9.1
	7830 Series	5.10 as of Fabric Engine 9.3
	VSP 4900 Series	5.10 as of VOSS 9.1
	VSP 7400 Series	5.10 as of VOSS 9.1

**Table 95: Logs and traps product support**

Feature	Product	Release introduced
Logging to a file and syslog (IPv4)	4220 Series	Fabric Engine 9.2
	5320 Series	Fabric Engine 8.6
	5420 Series	VOSS 8.4
	5520 Series	VOSS 8.2.5
	5720 Series	Fabric Engine 8.7
	7520 Series	Fabric Engine 8.10
	7720 Series	Fabric Engine 8.10
	7830 Series	Fabric Engine 9.3
	VSP 4900 Series	VOSS 8.1
	VSP 7400 Series	VOSS 8.0
Logging to a file and syslog (IPv6)	4220 Series	Fabric Engine 9.2
	5320 Series	Fabric Engine 8.6
	5420 Series	VOSS 8.4
	5520 Series	VOSS 8.2.5
	5720 Series	Fabric Engine 8.7
	7520 Series	Fabric Engine 8.10
	7720 Series	Fabric Engine 8.10
	7830 Series	Fabric Engine 9.4
	VSP 4900 Series	VOSS 8.1
	VSP 7400 Series	VOSS 8.0

**Table 95: Logs and traps product support (continued)**

Feature	Product	Release introduced
Simple Mail Transfer Protocol (SMTP) for log notification	4220 Series	Fabric Engine 9.2
	5320 Series	Fabric Engine 8.6
	5420 Series	VOSS 8.4
	5520 Series	VOSS 8.2.5
	5720 Series	Fabric Engine 8.7
	7520 Series	Fabric Engine 8.10
	7720 Series	Fabric Engine 8.10
	7830 Series	Fabric Engine 9.3
	VSP 4900 Series	VOSS 8.1
	VSP 7400 Series	VOSS 8.0
System Logging compliance with RFC 5424 and RFC 3339	4220 Series	Fabric Engine 9.2
	5320 Series	Fabric Engine 8.6
	5420 Series	VOSS 8.4
	5520 Series	VOSS 8.2.5
	5720 Series	Fabric Engine 8.7
	7520 Series	Fabric Engine 8.10
	7720 Series	Fabric Engine 8.10
	7830 Series	Fabric Engine 9.3
	VSP 4900 Series	VOSS 8.1
	VSP 7400 Series	VOSS 8.0
TLS client for secure syslog	4220 Series	Fabric Engine 9.2
	5320 Series	Fabric Engine 8.6
	5420 Series	VOSS 8.4
	5520 Series	VOSS 8.2.5
	5720 Series	Fabric Engine 8.7
	7520 Series	Fabric Engine 8.10
	7720 Series	Fabric Engine 8.10
	7830 Series	Fabric Engine 9.3
	VSP 4900 Series	VOSS 8.1
	VSP 7400 Series	VOSS 8.0

**Table 96: LRM/MACsec Adapter product support**

Feature	Product	Release introduced
LRM support	4220 Series	Not Supported

**Table 96: LRM/MACsec Adapter product support (continued)**

Feature	Product	Release introduced
<b>Note:</b> MACsec functionality of the adapter is not supported.	5320 Series	Not Supported
	5420 Series	Not Supported
	5520 Series	Not Supported
	5720 Series	Fabric Engine 8.9 Supported on 5720-VIM-6YE
	7520 Series	Not Supported
	7720 Series	Not Supported
	7830 Series	Not Supported
	VSP 4900 Series	Not Supported
	VSP 7400 Series	Not Supported



## Features M to O

**Table 97: MACsec product support**

Feature	Product	Release introduced
MACsec 2AN mode (static)	4220 Series	Not Applicable
	5320 Series	Not Supported
	5420 Series	Not Supported
	5520 Series	Not Supported
	5720 Series	Not Supported
	7520 Series	Fabric Engine 9.0 Supported on 7520-48YE-8CE For MACsec Key Agreement (MKA)
	7720 Series	Not Supported
	7830 Series	Fabric Engine 9.3
	VSP 4900 Series	VOSS 8.5
	VSP 7400 Series	Not Supported

**Table 97: MACsec product support (continued)**

Feature	Product	Release introduced
MACsec 4AN mode (static)	4220 Series	Not Applicable
	5320 Series	Fabric Engine 8.6 Not supported on 5320-24T-4X-XT or 5320-16P-2MXT-2X
	5420 Series	VOSS 8.5
	5520 Series	VOSS 8.2.5 Not supported on 5520-24X or 5520-VIM-4X 5520-24T and 5520-24W on all fixed ports except 1/25 and 1/26 5520-12MW-36W, 5520-48SE, 5520-48T, and 5520-48W on all fixed ports except 1/49 and 1/50
	5720 Series	Fabric Engine 8.7 5720-24MW and 5720-24MXW on all fixed ports except 1/25 and 1/26 5720-48MW and 5720-48MXW on all fixed ports except 1/49 and 1/50
	7520 Series	Fabric Engine 9.0 Supported on 7520-48YE-8CE
	7720 Series	Not Supported
	7830 Series	Fabric Engine 9.3
	VSP 4900 Series	VOSS 8.1
	VSP 7400 Series	Not Supported
Automatic QoS priority for MACsec packets on intermediate switches	4220 Series	Fabric Engine 9.2
	5320 Series	Fabric Engine 8.9
	5420 Series	Fabric Engine 8.9
	5520 Series	Fabric Engine 8.9
	5720 Series	Fabric Engine 8.9
	7520 Series	Fabric Engine 8.10
	7720 Series	Fabric Engine 8.10
	7830 Series	Not Supported
	VSP 4900 Series	VOSS 8.9
	VSP 7400 Series	VOSS 8.9



**Table 97: MACsec product support (continued)**

Feature	Product	Release introduced
MACsec Key Agreement (MKA)	4220 Series	Not Applicable
	5320 Series	Fabric Engine 9.4 Not supported on 5320-16P-2MXT-2X or 5320-24T-4X-XT
	5420 Series	Fabric Engine 9.4
	5520 Series	VOSS 8.5 Not supported on 5520-24X or 5520-VIM-4X
	5720 Series	Fabric Engine 8.7 5720-24MW and 5720-24MXW on all fixed ports except 1/25 and 1/26 5720-48MW and 5720-48MXW on all fixed ports except 1/49 and 1/50
	7520 Series	9.0 Supported on 7520-48YE-8CE
	7720 Series	Not Supported
	7830 Series	Fabric Engine 9.3
	VSP 4900 Series	VOSS 8.5
	VSP 7400 Series	Not Supported

**Table 97: MACsec product support (continued)**

Feature	Product	Release introduced
MACsec Key Agreement (MKA) Keychain support	4220 Series	Not Supported
	5320 Series	Fabric Engine 9.4 Not supported on 5320-16P-2MXT-2X or 5320-24T-4X-XT
	5420 Series	Fabric Engine 9.4
	5520 Series	Fabric Engine 9.3 Not supported on 5520-24X and 5520-VIM-4X
	5720 Series	Fabric Engine 9.3 5720-24MW and 5720-24MXW on all fixed ports except 1/25 and 1/26 5720-48MW and 5720-48MXW on all fixed ports except 1/49 and 1/50
	7520 Series	Fabric Engine 9.3 Supported on 7520-48YE-8CE
	7720 Series	Not Supported
	7830 Series	Fabric Engine 9.3
	VSP 4900 Series	VOSS 9.3
	VSP 7400 Series	Not Supported

**Table 98: MACsec encryption cipher suites product table**

Feature	Product	Release introduced
MACsec encryption cipher suites with 32-bit Packet Numbering	4220 Series	Not Applicable
	5320 Series	Fabric Engine 8.6 Both 128 bits and 256 bits Not supported on 5320-24T-4X-XT or 5320-16P-2MXT-2X
	5420 Series	VOSS 8.5 Both 128 bits and 256 bits
	5520 Series	VOSS 8.2.5 Both 128 bits and 256 bits Not supported on 5520-24X and 5520-VIM-4X 5520-24T and 5520-24W on all fixed ports except 1/25 and 1/26 5520-12MW-36W, 5520-48SE, 5520-48T, and

**Table 98: MACsec encryption cipher suites product table (continued)**

Feature	Product	Release introduced
		5520-48W on all fixed ports except 1/49 and 1/50
	5720 Series	Fabric Engine 8.7 Both 128 bits and 256 bits 5720-24MW and 5720-24MXW on all fixed ports except 1/25 and 1/26 5720-48MW and 5720-48MXW on all fixed ports except 1/49 and 1/50
	7520 Series	9.0 Supported on 7520-48YE-8CE Both 128 bits and 256 bits
	7720 Series	Not Supported
	7830 Series	Fabric Engine 9.3 Both 128 bits and 256 bits
	VSP 4900 Series	VOSS 8.1 VSP4900-48P supports 128-bit on all fixed ports. VSP4900-24XE supports 128-bit and 256-bit on all fixed ports. VSP4900-12MXU-12XE supports 128-bit and 256-bit on the SFP+ ports. VIM5-4XE and VIM5-4YE support 128-bit and 256-bit cipher suite.
	VSP 7400 Series	Not Supported

**Table 98: MACsec encryption cipher suites product table (continued)**

Feature	Product	Release introduced
MACsec encryption cipher suites with 64-bit Extended Packet Numbering	4220 Series	Not Applicable
	5320 Series	Not Supported
	5420 Series	Not Supported
	5520 Series	Not Supported
	5720 Series	Fabric Engine 9.3 Supported on 5720-VIM-2CE Both 128 bits and 256 bits
	7520 Series	Fabric Engine 9.3 Supported on 7520-48YE-8CE Both 128 bits and 256 bits
	7720 Series	Not Supported
	7830 Series	Fabric Engine 9.3 Both 128 bits and 256 bits
	VSP 4900 Series	Not Supported
	VSP 7400 Series	Not Supported

**Table 99: Mroute statistics product support**

Feature	Product	Release introduced
Multicast route (mroute) statistics for IPv4 and IPv6	4220 Series	Fabric Engine 9.2
	5320 Series	Fabric Engine 8.6 Not Supported on 5320-16P-2MXT-2X
	5420 Series	VOSS 8.4
	5520 Series	VOSS 8.2.5
	5720 Series	Fabric Engine 8.7
	7520 Series	Fabric Engine 8.10
	7720 Series	Fabric Engine 8.10
	7830 Series	Not Supported
	VSP 4900 Series	VOSS 8.1
	VSP 7400 Series	VOSS 8.0

**Table 100: MSTP-Fabric Connect Multi Homing product support**

Feature	Product	Release introduced
	4220 Series	Fabric Engine 9.2

**Table 100: MSTP-Fabric Connect Multi Homing product support (continued)**

Feature	Product	Release introduced
MSTP-Fabric Connect Multi Homing	5320 Series	Fabric Engine 8.6
	5420 Series	VOSS 8.4
	5520 Series	VOSS 8.2.5
	5720 Series	Fabric Engine 8.7
	7520 Series	Fabric Engine 8.10
	7720 Series	Fabric Engine 8.10
	7830 Series	Fabric Engine 9.3
	VSP 4900 Series	VOSS 8.1
	VSP 7400 Series	VOSS 8.0

**Table 101: Multi-area SPB product support**

Feature	Product	Release introduced
Multi-area SPB Boundary Node	4220 Series	Not Supported
	5320 Series	Not Supported
	5420 Series	Not Supported
	5520 Series	Fabric Engine 8.10
	5720 Series	Fabric Engine 8.10
	7520 Series	Fabric Engine 8.10
	7720 Series	Fabric Engine 8.10
	7830 Series	Not Supported
	VSP 4900 Series	Not Supported
	VSP 7400 Series	VOSS 8.4
Static data I-SID redistribution for Multi-area SPB Boundary Node	4220 Series	Not Supported
	5320 Series	Not Supported
	5420 Series	Not Supported
	5520 Series	Fabric Engine 8.10
	5720 Series	Fabric Engine 8.10
	7520 Series	Fabric Engine 8.10
	7720 Series	Fabric Engine 8.10
	7830 Series	Not Supported
	VSP 4900 Series	Not Supported
	VSP 7400 Series	VOSS 8.8

**Table 101: Multi-area SPB product support (continued)**

Feature	Product	Release introduced
Virtual NNI links for Multi-area SPB Boundary Nodes	4220 Series	Not Supported
	5320 Series	Not Supported
	5420 Series	Not Supported
	5520 Series	Not Supported
	5720 Series	Fabric Engine 9.1
	7520 Series	Fabric Engine 9.0.3
	7720 Series	Fabric Engine 9.0.3
	7830 Series	Not Supported
	VSP 4900 Series	Not Supported
	VSP 7400 Series	VOSS 9.0.3

**Table 102: Multicast Listener Discovery product support**

Feature	Product	Release introduced
Multicast Listener Discovery (MLD)	4220 Series	Not Supported
	5320 Series	Fabric Engine 8.6
	5420 Series	VOSS 8.4
	5520 Series	VOSS 8.2.5
	5720 Series	Fabric Engine 8.7
	7520 Series	Fabric Engine 8.10
	7720 Series	Fabric Engine 8.10
	7830 Series	Not Supported
	VSP 4900 Series	VOSS 8.1
	VSP 7400 Series	VOSS 8.0

**Table 103: MultiLink Trunking product support**

Feature	Product	Release introduced
	4220 Series	Fabric Engine 9.2
	5320 Series	Fabric Engine 8.6

**Table 103: MultiLink Trunking product support (continued)**

Feature	Product	Release introduced
MultiLink Trunking (MLT) / Link Aggregation Group (LAG)	5420 Series	VOSS 8.4
	5520 Series	VOSS 8.2.5
	5720 Series	Fabric Engine 8.7
	7520 Series	Fabric Engine 8.10
	7720 Series	Fabric Engine 8.10
	7830 Series	Fabric Engine 9.3
	VSP 4900 Series	VOSS 8.1
	VSP 7400 Series	VOSS 8.0

**Table 104: Multiple CLI Users product support**

Feature	Product	Release introduced
Multiple CLI users per role	4220 Series	Fabric Engine 9.2
	5320 Series	Fabric Engine 8.6
	5420 Series	VOSS 8.4
	5520 Series	VOSS 8.2.5
	5720 Series	Fabric Engine 8.7
	7520 Series	Fabric Engine 8.10
	7720 Series	Fabric Engine 8.10
	7830 Series	Fabric Engine 9.3
	VSP 4900 Series	VOSS 8.1
	VSP 7400 Series	VOSS 8.0

**Table 105: Network Load Balancing product support**

Feature	Product	Release introduced
Network Load Balancing (NLB) - multicast operation	4220 Series	Not Supported
	5320 Series	Not Supported
	5420 Series	Not Supported
	5520 Series	VOSS 8.2.5
	5720 Series	Fabric Engine 8.7
	7520 Series	Fabric Engine 8.10
	7720 Series	Fabric Engine 8.10
	7830 Series	Not Supported
	VSP 4900 Series	VOSS 8.1
	VSP 7400 Series	VOSS 8.0

**Table 105: Network Load Balancing product support (continued)**

Feature	Product	Release introduced
Network Load Balancing (NLB) - unicast operation	4220 Series	Not Supported
	5320 Series	Not Supported
	5420 Series	Not Supported
	5520 Series	VOSS 8.2.5
	5720 Series	Fabric Engine 8.7
	7520 Series	Fabric Engine 8.10
	7720 Series	Fabric Engine 8.10
	7830 Series	Not Supported
	VSP 4900 Series	VOSS 8.1
	VSP 7400 Series	VOSS 8.0

**Table 106: Network operating system personality product support**

Feature	Product	Release introduced
Dual-boot personalities	4220 Series	Fabric Engine 9.2
	5320 Series	Fabric Engine 8.6
	5420 Series	VOSS 8.4
	5520 Series	VOSS 8.2.5
	5720 Series	Fabric Engine 8.7
	7720 Series	Fabric Engine 8.10
	7520 Series	Fabric Engine 8.10
	7830 Series	Not Supported
	VSP 4900 Series	Not Applicable
	VSP 7400 Series	Not Applicable

**Table 107: Network Service Probe product support**

Feature	Product	Release introduced
VLAN and I-SID network service probe to	4220 Series	Fabric Engine 9.2
	5320 Series	Fabric Engine 9.2
	5420 Series	Fabric Engine 9.2



**Table 107: Network Service Probe product support (continued)**

Feature	Product	Release introduced
troubleshoot IP and DHCP connectivity issues	5520 Series	Fabric Engine 9.2
	5720 Series	Fabric Engine 9.2
	7520 Series	Fabric Engine 9.2
	7720 Series	Fabric Engine 9.2
	7830 Series	Fabric Engine 9.3
	VSP 4900 Series	VOSS 9.2
	VSP 7400 Series	VOSS 9.2
Domain resolution test for a specific DNS server	4220 Series	Fabric Engine 9.4
	5320 Series	Fabric Engine 9.4
	5420 Series	Fabric Engine 9.4
	5520 Series	Fabric Engine 9.4
	5720 Series	Fabric Engine 9.4
	7520 Series	Fabric Engine 9.4
	7720 Series	Fabric Engine 9.4
	7830 Series	Fabric Engine 9.4
	VSP 4900	VOSS 9.4
	VSP 7400	VOSS 9.4

**Table 108: Network Time Protocol product support**

Feature	Product	Release introduced
NTPv4 client for IPv4	4220 Series	Fabric Engine 9.2
	5320 Series	Fabric Engine 8.6
	5420 Series	VOSS 8.4
	5520 Series	VOSS 8.2.5
	5720 Series	Fabric Engine 8.7
	7520 Series	Fabric Engine 8.10
	7720 Series	Fabric Engine 8.10
	7830 Series	Fabric Engine 9.3
	VSP 4900 Series	VOSS 8.1
	VSP 7400 Series	VOSS 8.0

**Table 108: Network Time Protocol product support (continued)**

Feature	Product	Release introduced
NTPv4 client for IPv6	4220 Series	Fabric Engine 9.2
	5320 Series	Fabric Engine 8.6
	5420 Series	VOSS 8.4
	5520 Series	VOSS 8.2.5
	5720 Series	Fabric Engine 8.7
	7520 Series	Fabric Engine 8.10
	7720 Series	Fabric Engine 8.10
	7830 Series	Fabric Engine 9.4
	VSP 4900 Series	VOSS 8.1
	VSP 7400 Series	VOSS 8.0
NTPv4 master and restrict	4220 Series	Fabric Engine 9.2
	5320 Series	Fabric Engine 8.6
	5420 Series	VOSS 8.4
	5520 Series	VOSS 8.2.5
	5720 Series	Fabric Engine 8.7
	7520 Series	Fabric Engine 8.10
	7720 Series	Fabric Engine 8.10
	7830 Series	Fabric Engine 9.3
	VSP 4900 Series	VOSS 8.1
	VSP 7400 Series	VOSS 8.0
NTP Authentication Key Obfuscation	4220 Series	Fabric Engine 9.2
	5320 Series	Fabric Engine 8.8
	5420 Series	Fabric Engine 8.8
	5520 Series	Fabric Engine 8.8
	5720 Series	Fabric Engine 8.8
	7520 Series	Fabric Engine 8.10
	7720 Series	Fabric Engine 8.10
	7830 Series	Fabric Engine 9.3
	VSP 4900 Series	VOSS 8.8
	VSP 7400 Series	VOSS 8.8

**Table 108: Network Time Protocol product support (continued)**

Feature	Product	Release introduced
NTP Server configuration using fully qualified domain name (FQDN)	4220 Series	Fabric Engine 9.2
	5320 Series	Fabric Engine 8.10
	5420 Series	Fabric Engine 8.10
	5520 Series	Fabric Engine 8.10
	5720 Series	Fabric Engine 8.10
	7520 Series	Fabric Engine 8.10
	7720 Series	Fabric Engine 8.10
	7830 Series	Fabric Engine 9.3
	VSP 4900 Series	VOSS 8.10
	VSP 7400 Series	VOSS 8.10

**Table 109: nni-mstp boot flag product support**

Feature	Product	Release introduced
nni-mstp boot flag ( <code>boot config flags nni-mstp</code> )	4220 Series	Not Supported
	5320 Series	Fabric Engine 8.6
	5420 Series	VOSS 8.4
	5520 Series	VOSS 8.2.5
	5720 Series	Fabric Engine 8.7
	7520 Series	Fabric Engine 8.10
	7720 Series	Fabric Engine 8.10
	7830 Series	Not Supported
	VSP 4900 Series	VOSS 8.1
	VSP 7400 Series	VOSS 8.0

**Table 110: Node Alias product support**

Feature	Product	Release introduced
	4220 Series	Fabric Engine 9.2

**Table 110: Node Alias product support (continued)**

Feature	Product	Release introduced
Node Alias	5320 Series	Fabric Engine 9.1
	5420 Series	Fabric Engine 9.1
	5520 Series	Fabric Engine 9.1
	5720 Series	Fabric Engine 9.1
	7520 Series	Fabric Engine 9.1
	7720 Series	Fabric Engine 9.1
	7830 Series	Fabric Engine 9.3
	VSP 4900 Series	VOSS 9.1
	VSP 7400 Series	VOSS 9.1
DHCP Fingerprinting	4220 Series	Fabric Engine 9.1
	5320 Series	Fabric Engine 9.1
	5420 Series	Fabric Engine 9.1
	5520 Series	Fabric Engine 9.1
	5720 Series	Fabric Engine 9.1
	7520 Series	Fabric Engine 9.1
	7720 Series	Fabric Engine 9.1
	7830 Series	Fabric Engine 9.3
	VSP 4900 Series	VOSS 9.1
	VSP 7400 Series	VOSS 9.1

**Table 111: OpenAPI product support**

Feature	Product	Release introduced
	4220 Series	Fabric Engine 9.3

**Table 111: OpenAPI product support (continued)**

Feature	Product	Release introduced
OpenAPI local access	5320 Series	Fabric Engine 9.3
	5420 Series	Fabric Engine 9.3
	5520 Series	Fabric Engine 9.3
	5720 Series	Fabric Engine 9.3
	7720 Series	Fabric Engine 9.3
	7520 Series	Fabric Engine 9.3
	7830 Series	Fabric Engine 9.3
	VSP 4900 Series	VOSS 9.3
	VSP 7400 Series	VOSS 9.3

**Table 112: OSPF product support**

Feature	Product	Release introduced
Open Shortest Path First (OSPF)	4220 Series	Not Supported
	5320 Series	Fabric Engine 8.6 For the 5320 Series, only the following models support more than one VRF with IP configuration: <ul style="list-style-type: none"> <li>• 5320-16P-2MXT-2X</li> <li>• 5320-24T-4X-XT</li> <li>• 5320-24T-24S-4XE-XT</li> <li>• 5320-48P-8XE</li> <li>• 5320-48T-8XE</li> </ul>
	5420 Series	VOSS 8.4
	5520 Series	VOSS 8.2.5
	5720 Series	Fabric Engine 8.7
	7520 Series	Fabric Engine 8.10
	7720 Series	Fabric Engine 8.10
	7830 Series	Fabric Engine 9.3
	VSP 4900 Series	VOSS 8.1
	VSP 7400 Series	VOSS 8.0

**Table 112: OSPF product support (continued)**

Feature	Product	Release introduced
Secure hash algorithm 1 (SHA-1) and SHA-2	4220 Series	Not Supported
	5320 Series	Fabric Engine 8.6
	5420 Series	VOSS 8.4
	5520 Series	VOSS 8.2.5
	5720 Series	Fabric Engine 8.7
	7520 Series	Fabric Engine 8.10
	7720 Series	Fabric Engine 8.10
	7830 Series	Fabric Engine 9.3
	VSP 4900 Series	VOSS 8.1
	VSP 7400 Series	VOSS 8.0

**Table 113: OSPFv3 product support**

Feature	Product	Release introduced
OSPFv3	4220 Series	Not Supported
	5320 Series	Fabric Engine 8.6 For the 5320 Series, only the following models support more than one VRF with IP configuration: <ul style="list-style-type: none"> <li>• 5320-16P-2MXT-2X</li> <li>• 5320-24T-4X-XT</li> <li>• 5320-24T-24S-4XE-XT</li> <li>• 5320-48P-8XE</li> <li>• 5320-48T-8XE</li> </ul>
	5420 Series	VOSS 8.4
	5520 Series	VOSS 8.2.5
	5720 Series	Fabric Engine 8.7
	7520 Series	Fabric Engine 8.10
	7720 Series	Fabric Engine 8.10
	7830 Series	Fabric Engine 9.4
	VSP 4900 Series	VOSS 8.1
	VSP 7400 Series	VOSS 8.0

**Table 113: OSPFv3 product support (continued)**

Feature	Product	Release introduced
OSPFv3 support for CLIP interfaces	4220 Series	Not Supported
	5320 Series	Fabric Engine 8.10.1
	5420 Series	Fabric Engine 8.10.1
	5520 Series	Fabric Engine 8.10.1
	5720 Series	Fabric Engine 8.10.1
	7520 Series	Fabric Engine 8.10.1
	7720 Series	Fabric Engine 8.10.1
	7830 Series	Fabric Engine 9.4
	VSP 4900 Series	VOSS 8.10.1
	VSP 7400 Series	VOSS 8.10.1



## Features P to R

**Table 114: Password Hash**

Feature	Product	Release introduced
<b>SHA512 Password Hashing</b>  <b>Note:</b> When upgrading, SHA1 password hashes and custom users are retained, until a factory default reset or until the password hash level is changed. During a factory default reset, SHA2 512-bit becomes the default password hash, all custom users are deleted, and SHA1 passwords are removed.	4220 Series	Fabric Engine 9.2
	5320 Series	Fabric Engine 8.8
	5420 Series	Fabric Engine 8.8
	5520 Series	Fabric Engine 8.8
	5720 Series	Fabric Engine 8.8
	7520 Series	Fabric Engine 8.10
	7720 Series	Fabric Engine 8.10
	7830 Series	Fabric Engine 9.3
	VSP 4900 Series	VOSS 8.8
	VSP 7400 Series	VOSS 8.8

**Table 115: Perpetual licenses product support**

Feature	Product	Release introduced
Perpetual licenses	4220 Series	Not Applicable
	5320 Series	Fabric Engine 8.6
	5420 Series	VOSS 8.4
	5520 Series	VOSS 8.2.5
	5720 Series	Fabric Engine 8.7
	7520 Series	Fabric Engine 8.10
	7720 Series	Fabric Engine 8.10
	7830 Series	Fabric Engine 9.3
	VSP 4900 Series	VOSS 8.1
	VSP 7400 Series	VOSS 8.0

**Table 116: PIM over IPv6 product support**

Feature	Product	Release introduced
	4220 Series	Not Supported



**Table 116: PIM over IPv6 product support (continued)**

Feature	Product	Release introduced
PIM over IPv6	5320 Series	Fabric Engine 8.6
	5420 Series	VOSS 8.4
	5520 Series	VOSS 8.2.
	5720 Series	Fabric Engine 8.7
	7520 Series	Fabric Engine 8.10
	7720 Series	Fabric Engine 8.10
	7830 Series	Not Supported
	VSP 4900 Series	VOSS 8.1
	VSP 7400 Series	VOSS 8.0

**Table 117: Port-Based Rate Limiting, Policing, and Shaping product support**

Feature	Product	Release introduced
Egress port shaper	4220 Series	Fabric Engine 9.2
	5320 Series	Fabric Engine 8.6
	5420 Series	VOSS 8.4
	5520 Series	VOSS 8.2.5
	5720 Series	Fabric Engine 8.7
	7520 Series	Fabric Engine 8.10
	7720 Series	Fabric Engine 8.10
	7830 Series	Fabric Engine 9.3
	VSP 4900 Series	VOSS 8.1
	VSP 7400 Series	VOSS 8.0
Ingress policer and port rate limiter	4220 Series	Fabric Engine 9.2
	5320 Series	Fabric Engine 8.6
	5420 Series	VOSS 8.5
	5520 Series	VOSS 8.5
	5720 Series	Fabric Engine 8.7
	7520 Series	Fabric Engine 8.10
	7720 Series	Fabric Engine 8.10
	7830 Series	Not Supported
	VSP 4900 Series	VOSS 8.5
	VSP 7400 Series	VOSS 8.5

**Table 117: Port-Based Rate Limiting, Policing, and Shaping product support (continued)**

Feature	Product	Release introduced
QoS ingress port-based rate limiter	4220 Series	Not Supported
	5320 Series	Not Supported
	5420 Series	Not Supported
	5520 Series	Not Supported
	5720 Series	Not Supported
	7520 Series	Not Supported
	7720 Series	Not Supported
	7830 Series	Not Supported
	VSP 4900 Series	VOSS 8.1
	VSP 7400 Series	Not Supported

**Table 118: Port Mirroring product support**

Feature	Product	Release introduced
Ingress mirroring (port and flow-based)	4220 Series	Fabric Engine 9.2
	5320 Series	Fabric Engine 8.6
	5420 Series	VOSS 8.4
	5520 Series	VOSS 8.2.5
	5720 Series	Fabric Engine 8.7
	7520 Series	Fabric Engine 8.10
	7720 Series	Fabric Engine 8.10
	7830 Series	Fabric Engine 9.3  <b>Note:</b> Mirror destination MLT does not apply to 7830 Series.
	VSP 4900 Series	VOSS 8.1
	VSP 7400 Series	VOSS 8.0

**Table 118: Port Mirroring product support (continued)**

Feature	Product	Release introduced
Egress mirroring (port-based)	4220 Series	Fabric Engine 9.2
	5320 Series	Fabric Engine 8.6
	5420 Series	VOSS 8.4
	5520 Series	VOSS 8.2.5
	5720 Series	Fabric Engine 8.7
	7520 Series	Fabric Engine 8.10
	7720 Series	Fabric Engine 8.10
	7830 Series	Fabric Engine 9.3
	VSP 4900 Series	VOSS 8.1
	VSP 7400 Series	VOSS 8.0

**Table 119: Power over Ethernet product support**

Feature	Product	Release introduced
Power over Ethernet (PoE)	4220 Series	Fabric Engine 9.2 Not supported on 4220-12T-4X, 4220-24T-4X, or 4220-8X
	5320 Series	Fabric Engine 8.6 Not supported on 5320-24T-8XE, 5320-48T-8XE, 5320-24T-4X- XT, or 5320-24T-24S-4XE-XT
	5420 Series	VOSS 8.4 Not supported on: <ul style="list-style-type: none"> <li>• 5420F-24T-4XE</li> <li>• 5420F-48T-4XE</li> <li>• 5420F-24S-4XE</li> <li>• 5420M-24T-4YE</li> <li>• 5420M-48T-4YE</li> </ul>
	5520 Series	VOSS 8.2.5 Supported on: <ul style="list-style-type: none"> <li>• 5520-12MW-36W</li> <li>• 5520-24W</li> <li>• 5520-48W</li> </ul>
	5720 Series	Fabric Engine 8.7

**Table 119: Power over Ethernet product support (continued)**

Feature	Product	Release introduced
		Not supported on 5720-VIM-2CE or 5720-VIM-6YE
	7520 Series	Not Applicable
	7720 Series	Not Applicable
	7830 Series	Not Applicable
	VSP 4900 Series	VOSS 8.1 Supported on all fixed ports on VSP4900-48P and ports 1/1-1/12 on VSP4900-12MXU-12XE
	VSP 7400 Series	Not Applicable
PoE/PoE+ allocation using LLDP	4220 Series	Not Applicable
	5320 Series	Fabric Engine 8.6 Not supported on 5320-24T-8XE or 5320-48T-8XE
	5420 Series	VOSS 8.4 Not supported on: <ul style="list-style-type: none"> <li>• 5420F-24T-4XE</li> <li>• 5420F-48T-4XE</li> <li>• 5420F-24S-4XE</li> <li>• 5420M-24T-4YE</li> <li>• 5420M-48T-4YE</li> </ul>
	5520 Series	VOSS 8.2.5 Supported on: <ul style="list-style-type: none"> <li>• 5520-12MW-36W</li> <li>• 5520-24W</li> <li>• 5520-48W</li> </ul>
	5720 Series	Fabric Engine 8.7 Not supported on 5720-VIM-2CE or 5720-VIM-6YE
	7520 Series	Not Applicable
	7720 Series	Not Applicable
	7830 Series	Not Applicable
	VSP 4900 Series	VOSS 8.1 Supported on all fixed ports on VSP4900-48P and ports 1/1-1/12 on VSP4900-12MXU-12XE
	VSP 7400 Series	Not Applicable

**Table 119: Power over Ethernet product support (continued)**

Feature	Product	Release introduced
Fast PoE	4220 Series	Fabric Engine 9.2 Not supported on 4220-12T-4X, 4220-24T-4X, or 4220-8X
	5320 Series	Fabric Engine 8.6 Not supported on 5320-24T-8XE or 5320-48T-8XE
	5420 Series	VOSS 8.4 Not supported on: <ul style="list-style-type: none"> <li>• 5420F-24T-4XE</li> <li>• 5420F-48T-4XE</li> <li>• 5420F-24S-4XE</li> <li>• 5420M-24T-4YE</li> <li>• 5420M-48T-4YE</li> </ul>
	5520 Series	VOSS 8.2.5 Supported on: <ul style="list-style-type: none"> <li>• 5520-12MW-36W</li> <li>• 5520-24W</li> <li>• 5520-48W</li> </ul>
	5720 Series	Fabric Engine 8.7 Not supported on 5720- VIM-2CE or 5720-VIM-6YE
	7520 Series	Not Applicable
	7720 Series	Not Applicable
	7830 Series	Not Applicable
	VSP 4900 Series	VOSS 8.1 Supported on all fixed ports on VSP4900-48P and ports 1/1-1/12 on VSP4900-12MXU-12XE
	VSP 7400 Series	Not Applicable

**Table 119: Power over Ethernet product support (continued)**

Feature	Product	Release introduced
Perpetual PoE	4220 Series	Fabric Engine 9.2 Not supported on 4220-12T-4X, 4220-24T-4X, or 4220-8X
	5320 Series	Fabric Engine 8.6 Not supported on 5320-24T-8XE or 5320-48T-8XE
	5420 Series	VOSS 8.4 Not supported on: <ul style="list-style-type: none"> <li>• 5420F-24T-4XE</li> <li>• 5420F-48T-4XE</li> <li>• 5420F-24S-4XE</li> <li>• 5420M-24T-4YE</li> <li>• 5420M-48T-4YE</li> </ul>
	5520 Series	VOSS 8.2.5 Supported on: <ul style="list-style-type: none"> <li>• 5520-12MW-36W</li> <li>• 5520-24W</li> <li>• 5520-48W</li> </ul>
	5720 Series	Fabric Engine 8.7 Not supported on 5720- VIM-2CE or 5720-VIM-6YE
	7520 Series	Not Applicable
	7720 Series	Not Applicable
	7830 Series	Not Applicable
	VSP 4900 Series	VOSS 8.1 Supported on all fixed ports on VSP4900-48P and ports 1/1-1/12 on VSP4900-12MXU-12XE
	VSP 7400 Series	Not Applicable

**Table 119: Power over Ethernet product support (continued)**

Feature	Product	Release introduced
Ability to configure the Detection Type per port	4220 Series	Not Supported
	5320 Series	Not Supported
	5420 Series	Fabric Engine 9.2 Not supported on: <ul style="list-style-type: none"> <li>• 5420F-24T-4XE</li> <li>• 5420F-48T-4XE</li> <li>• 5420F-24S-4XE</li> <li>• 5420M-24T-4YE</li> <li>• 5420M-48T-4YE</li> </ul>
	5520 Series	Fabric Engine 9.2 Supported on: <ul style="list-style-type: none"> <li>• 5520-12MW-36W</li> <li>• 5520-24W</li> <li>• 5520-48W</li> </ul>
	5720 Series	Not Supported
	7520 Series	Not Applicable
	7720 Series	Not Applicable
	7830 Series	Not Applicable
	VSP 4900 Series	Not Supported
	VSP 7400 Series	Not Supported

**Table 120: Precision Time Protocol version 2 product support**

Feature	Product	Release introduced
Transparent Clock with VLANs	4220 Series	Not Supported
	5320 Series	Fabric Engine 9.4

**Table 120: Precision Time Protocol version 2 product support (continued)**

Feature	Product	Release introduced
		Supported on 5320-16P-2MXT-2X only
	5420 Series	Fabric Engine 9.4
	5520 Series	Fabric Engine 9.4
	5720 Series	Fabric Engine 9.4
	7520 Series	Fabric Engine 9.4
	7720 Series	Fabric Engine 9.4
	7830 Series	Not Supported
	VSP 4900 Series	VOSS 9.4
	VSP 7400 Series	VOSS 9.4

**Table 121: Protocol Independent Multicast-Source Specific Mode**

Feature	Product	Release introduced
PIM-Source Specific Mode (PIM-SSM) for IPv4	4220 Series	Not Supported
	5320 Series	Fabric Engine 8.6
	5420 Series	VOSS 8.4
	5520 Series	VOSS 8.2.5
	5720 Series	Fabric Engine 8.7
	7520 Series	Fabric Engine 8.10
	7720 Series	Fabric Engine 8.10
	7830 Series	Not Supported
	VSP 4900 Series	VOSS 8.1
	VSP 7400 Series	VOSS 8.0

**Table 122: Protocol Independent Multicast - Sparse Mode product support**

Feature	Product	Release introduced
	4220 Series	Not Supported
	5320 Series	Fabric Engine 8.6



**Table 122: Protocol Independent Multicast - Sparse Mode product support (continued)**

Feature	Product	Release introduced
Protocol Independent Multicast-Sparse Mode (PIM-SM) for IPv4	5420 Series	VOSS 8.4
	5520 Series	VOSS 8.2.5
	5720 Series	Fabric Engine 8.7
	7520 Series	Fabric Engine 8.10
	7720 Series	Fabric Engine 8.10
	7830 Series	Not Supported
	VSP 4900 Series	VOSS 8.1
	VSP 7400 Series	VOSS 8.0
PIM Infinite Threshold for IPv4 and IPv6	4220 Series	Not Supported
	5320 Series	Fabric Engine 8.6
	5420 Series	VOSS 8.5
	5520 Series	VOSS 8.5
	5720 Series	Fabric Engine 8.7
	7520 Series	Fabric Engine 8.10
	7720 Series	Fabric Engine 8.10
	7830 Series	Not Supported
	VSP 4900 Series	VOSS 8.5
	VSP 7400 Series	VOSS 8.5

**Table 123: QoS and VoIP product support**

Feature	Product	Release introduced
Automatic QoS	4220 Series	Not Supported Use Auto-sense with IP Phone support instead.
	5320 Series	Not Supported Use Auto-sense with IP Phone support instead.
	5420 Series	Not Supported Use Auto-sense with IP Phone support instead.
	5520 Series	Not Supported Use Auto-sense with IP Phone support instead.
	5720 Series	Not Supported

**Table 123: QoS and VoIP product support (continued)**

Feature	Product	Release introduced
		Use Auto-sense with IP Phone support instead.
	7520 Series	Not Supported Use Auto-sense with IP Phone support instead.
	7720 Series	Not Supported Use Auto-sense with IP Phone support instead.
	7830 Series	Not Supported
	VSP 4900 Series	VOSS 8.1
	VSP 7400 Series	VOSS 8.0

**Table 124: Queue Profiles product support**

Feature	Product	Release introduced
QoS per queue rate limiting	4220 Series	Fabric Engine 9.2
	5320 Series	Fabric Engine 8.6
	5420 Series	VOSS 8.4
	5520 Series	VOSS 8.2.5
	5720 Series	Fabric Engine 8.7
	7520 Series	Fabric Engine 8.10
	7720 Series	Fabric Engine 8.10
	7830 Series	Fabric Engine 9.3
	VSP 4900 Series	VOSS 8.1
	VSP 7400 Series	VOSS 8.0

**Table 125: RADIUS product support**

Feature	Product	Release introduced
	4220 Series	Fabric Engine 9.2

**Table 125: RADIUS product support (continued)**

Feature	Product	Release introduced
RADIUS (IPv6)	5320 Series	Fabric Engine 8.6
	5420 Series	VOSS 8.4
	5520 Series	VOSS 8.2.5
	5720 Series	Fabric Engine 8.7
	7520 Series	Fabric Engine 8.10
	7720 Series	Fabric Engine 8.10
	7830 Series	Fabric Engine 9.4
	VSP 4900 Series	VOSS 8.1
	VSP 7400 Series	VOSS 8.0
RADIUS, community-based users (IPv4)	4220 Series	Fabric Engine 9.2
	5320 Series	Fabric Engine 8.6
	5420 Series	VOSS 8.4
	5520 Series	VOSS 8.2.5
	5720 Series	Fabric Engine 8.7
	7520 Series	Fabric Engine 8.10
	7720 Series	Fabric Engine 8.10
	7830 Series	Fabric Engine 9.3
	VSP 4900 Series	VOSS 8.1
	VSP 7400 Series	VOSS 8.0
RFC 5176 – Dynamic Authorization Extensions to RADIUS	4220 Series	Fabric Engine 9.2
	5320 Series	Fabric Engine 8.6
	5420 Series	VOSS 8.4
	5520 Series	VOSS 8.2.5
	5720 Series	Fabric Engine 8.7
	7520 Series	Fabric Engine 8.10
	7720 Series	Fabric Engine 8.10
	7830 Series	Not Supported
	VSP 4900 Series	VOSS 8.1
	VSP 7400 Series	VOSS 8.0

**Table 125: RADIUS product support (continued)**

Feature	Product	Release introduced
RFC 5997 – RADIUS Reachability Server Status	4220 Series	Fabric Engine 9.2
	5320 Series	Fabric Engine 8.6
	5420 Series	VOSS 8.4
	5520 Series	VOSS 8.2.5
	5720 Series	Fabric Engine 8.7
	7520 Series	Fabric Engine 8.10
	7720 Series	Fabric Engine 8.10
	7830 Series	Fabric Engine 9.4
	VSP 4900 Series	VOSS 8.1
	VSP 7400 Series	VOSS 8.0
RADIUS Configuration using Fully Qualified Domain Name (FQDN)	4220 Series	Fabric Engine 9.2
	5320 Series	Fabric Engine 9.0.2
	5420 Series	Fabric Engine 9.0.2
	5520 Series	Fabric Engine 9.0.2
	5720 Series	Fabric Engine 9.0.2
	7520 Series	Fabric Engine 9.0.2
	7720 Series	Fabric Engine 9.0.2
	7830 Series	Fabric Engine 9.3
	VSP 4900 Series	VOSS 9.0.2
	VSP 7400 Series	VOSS 9.0.2

**Table 126: RADSec product support**

Feature	Product	Release introduced
	4220 Series	Fabric Engine 9.2

**Table 126: RADSec product support (continued)**

Feature	Product	Release introduced
RADIUS Security (RADSec)	5320 Series	Fabric Engine 8.6
	5420 Series	VOSS 8.4
	5520 Series	VOSS 8.2.5
	5720 Series	Fabric Engine 8.7
	7520 Series	Fabric Engine 8.10
	7720 Series	Fabric Engine 8.10
	7830 Series	Fabric Engine 9.3
	VSP 4900 Series	VOSS 8.2
	VSP 7400 Series	VOSS 8.2

**Table 127: Remote Monitoring product support**

Feature	Product	Release introduced
Remote Monitoring 1 (RMON1) for Layer 1 and Layer 2	4220 Series	Fabric Engine 9.2
	5320 Series	Fabric Engine 8.6
	5420 Series	VOSS 8.4
	5520 Series	VOSS 8.2.5
	5720 Series	Fabric Engine 8.7
	7520 Series	Fabric Engine 8.10
	7720 Series	Fabric Engine 8.10
	7830 Series	Fabric Engine 9.3
	VSP 4900 Series	VOSS 8.1
	VSP 7400 Series	VOSS 8.0

**Table 127: Remote Monitoring product support (continued)**

Feature	Product	Release introduced
Remote Monitoring 2 (RMON2) for network and application layer protocols	4220 Series	Fabric Engine 9.2
	5320 Series	Fabric Engine 8.6
	5420 Series	VOSS 8.4
	5520 Series	VOSS 8.2.5
	5720 Series	Fabric Engine 8.7
	7520 Series	Fabric Engine 8.10
	7720 Series	Fabric Engine 8.10
	7830 Series	Fabric Engine 9.3
	VSP 4900 Series	VOSS 8.1
	VSP 7400 Series	VOSS 8.0

**Table 128: Representational State Transfer Configuration Protocol (RESTCONF) product support**

Feature	Product	Release introduced
Representational State Transfer Configuration Protocol (RESTCONF)	4220 Series	Fabric Engine 9.2
	5320 Series	Fabric Engine 8.6
	5420 Series	VOSS 8.4
	5520 Series	VOSS 8.2.5
	5720 Series	Fabric Engine 8.7
	7520 Series	Fabric Engine 8.10
	7720 Series	Fabric Engine 8.10
	7830 Series	Fabric Engine 9.3
	VSP 4900 Series	VOSS 8.1
	VSP 7400 Series	VOSS 8.0

**Table 129: RIPng product support**

Feature	Product	Release introduced
	4220 Series	Not Supported

**Table 129: RIPng product support (continued)**

Feature	Product	Release introduced
RIPng	5320 Series	Fabric Engine 8.6
	5420 Series	VOSS 8.4
	5520 Series	VOSS 8.2.5
	5720 Series	Fabric Engine 8.7
	7520 Series	Fabric Engine 8.10
	7720 Series	Fabric Engine 8.10
	7830 Series	Fabric Engine 9.4
	VSP 4900 Series	VOSS 8.1
	VSP 7400 Series	VOSS 8.0

**Table 130: Routing Information Protocol product support**

Feature	Product	Release introduced
Routing Information Protocol (RIP)	4220 Series	Not Supported
	5320 Series	Fabric Engine 8.6
	5420 Series	VOSS 8.4
	5520 Series	VOSS 8.2.5
	5720 Series	Fabric Engine 8.7
	7520 Series	Fabric Engine 8.10
	7720 Series	Fabric Engine 8.10
	7830 Series	Fabric Engine 9.3
	VSP 4900 Series	VOSS 8.1
	VSP 7400 Series	VOSS 8.0

**Table 131: RSMLT for IPv4 product support**

Feature	Product	Release introduced
	4220 Series	Not Supported

**Table 131: RSMLT for IPv4 product support (continued)**

Feature	Product	Release introduced
IPv4 RSMLT	5320 Series	Not Supported
	5420 Series	VOSS 8.4
	5520 Series	VOSS 8.2.5
	5720 Series	Fabric Engine 8.7
	7520 Series	Fabric Engine 8.10
	7720 Series	Fabric Engine 8.10
	7830 Series	Fabric Engine 9.4
	VSP 4900 Series	VOSS 8.1
	VSP 7400 Series	VOSS 8.0

**Table 132: RSMLT for IPv6 product support**

Feature	Product	Release introduced
IPv6 RSMLT	4220 Series	Not Supported
	5320 Series	Not Supported
	5420 Series	VOSS 8.4
	5520 Series	VOSS 8.2.5
	5720 Series	Fabric Engine 8.7
	7520 Series	Fabric Engine 8.10
	7720 Series	Fabric Engine 8.10
	7830 Series	Fabric Engine 9.4
	VSP 4900 Series	VOSS 8.1
	VSP 7400 Series	VOSS 8.0

**Table 133: run spbm installation script product support**

Feature	Product	Release introduced
	4220 Series	Fabric Engine 9.2



**Table 133: run spbm installation script product support (continued)**

Feature	Product	Release introduced
run spbm installation script	5320 Series	Fabric Engine 8.6
	5420 Series	VOSS 8.4
	5520 Series	VOSS 8.2.5
	5720 Series	Fabric Engine 8.7
	7520 Series	Fabric Engine 8.10
	7720 Series	Fabric Engine 8.10
	7830 Series	Not Supported
	VSP 4900 Series	VOSS 8.1
	VSP 7400 Series	VOSS 8.0



## Features S to U

**Table 134: SD-WAN product support**

Feature	Product	Release introduced
Fabric Extend Integration with ExtremeCloud SD-WAN	4220 Series	Fabric Engine 9.2 The 4220 Series switches support only a single active VRF with IP configuration.
	5320 Series	Fabric Engine 8.10.1 For the 5320 Series, only the following models support more than one VRF with IP configuration: <ul style="list-style-type: none"> <li>• 5320-16P-2MXT-2X</li> <li>• 5320-24T-4X-XT</li> <li>• 5320-24T-24S-4XE-XT</li> <li>• 5320-48P-8XE</li> <li>• 5320-48T-8XE</li> </ul>
	5420 Series	Fabric Engine 8.10.1
	5520 Series	Fabric Engine 8.10.1
	5720 Series	Fabric Engine 8.10.1
	7520 Series	Fabric Engine 8.10.1
	7720 Series	Fabric Engine 8.10.1
	7830 Series	Not Supported
	VSP 4900 Series	VOSS 8.10.1
	VSP 7400 Series	VOSS 8.10.1

**Table 134: SD-WAN product support (continued)**

Feature	Product	Release introduced
Ability to specify the VRF that the switch uses for SD-WAN	4220 Series	Fabric Engine 9.2
	5320 Series	Fabric Engine 9.0.3
	5420 Series	Fabric Engine 9.1
	5520 Series	Fabric Engine 9.1
	5720 Series	Fabric Engine 9.1
	7520 Series	Fabric Engine 9.1
	7720 Series	Fabric Engine 9.1
	7830 Series	Not Supported
	VSP 4900 Series	VOSS 9.1
	VSP 7400 Series	VOSS 9.1
Auto-sense port Multi-area SPB support	4220 Series	Not Applicable
	5320 Series	Not Applicable
	5420 Series	Not Applicable
	5520 Series	Fabric Engine 9.0.3
	5720 Series	Fabric Engine 9.0.3
	7520 Series	Fabric Engine 9.0.3
	7720 Series	Fabric Engine 9.0.3
	7830 Series	Not Supported
	VSP 4900 Series	Not Applicable
	VSP 7400 Series	VOSS 9.0.3
mgmt sdwan interface  <b>Note:</b> Requires a minimum of ExtremeCloud SD-WAN 24.4	4220 Series	Fabric Engine 9.2
	5320 Series	Fabric Engine 9.1
	5420 Series	Fabric Engine 9.1
	5520 Series	Fabric Engine 9.1
	5720 Series	Fabric Engine 9.1
	7520 Series	Fabric Engine 9.1
	7720 Series	Fabric Engine 9.1
	7830 Series	Not Supported
	VSP 4900 Series	VOSS 9.1
	VSP 7400 Series	VOSS 9.1

**Table 135: SD-WAN Local Breakout product support**

Feature	Product	Release introduced
	4220 Series	Not Applicable

**Table 135: SD-WAN Local Breakout product support (continued)**

Feature	Product	Release introduced
ExtremeCloud SD-WAN Local Breakout configuration applied through Auto-sense	5320 Series	Fabric Engine 9.1 Not supported on models with a single active VRF.
	5420 Series	Fabric Engine 9.1
	5520 Series	Fabric Engine 9.1
	5720 Series	Fabric Engine 9.1
	7520 Series	Fabric Engine 9.1
	7720 Series	Fabric Engine 9.1
	7830 Series	Not Supported
	VSP 4900 Series	VOSS 9.1
	VSP 7400 Series	VOSS 9.1

**Table 136: Secondary IP Interfaces product support**

Feature	Product	Release introduced
Secondary IP Interfaces	4220 Series	Not Applicable
	5320 Series	Fabric Engine 8.10 For the 5320 Series, only the following models support more than one VRF with IP configuration: <ul style="list-style-type: none"> <li>• 5320-16P-2MXT-2X</li> <li>• 5320-24T-4X-XT</li> <li>• 5320-24T-24S-4XE-XT</li> <li>• 5320-48P-8XE</li> <li>• 5320-48T-8XE</li> </ul>
	5420 Series	Fabric Engine 8.10
	5520 Series	Fabric Engine 8.10
	5720 Series	Fabric Engine 8.10
	7520 Series	Fabric Engine 8.10
	7720 Series	Fabric Engine 8.10
	7830 Series	Fabric Engine 9.3
	VSP 4900 Series	VOSS 8.10
	VSP 7400 Series	VOSS 8.10

**Table 137: Secure Boot product support**

Feature	Product	Release introduced
Secure Boot	4220 Series	Not Supported

**Table 137: Secure Boot product support (continued)**

Feature	Product	Release introduced
For more information, see the <i>Hardware Installation Guide</i> for the supported product.	5320 Series	Not Supported
	5420 Series	Supported
	5520 Series	Supported
	5720 Series	Supported
	7520 Series	Supported
	7720 Series	Supported
	7830 Series	Supported
	VSP 4900 Series	Not Supported
	VSP 7400 Series	Not Supported

**Table 138: Secure Shell product support**

Feature	Product	Release introduced
Secure Shell (SSH) server (IPv4)	4220 Series	Fabric Engine 9.2
	5320 Series	Fabric Engine 8.6
	5420 Series	VOSS 8.4
	5520 Series	VOSS 8.2.5
	5720 Series	Fabric Engine 8.7
	7520 Series	Fabric Engine 8.10
	7720 Series	Fabric Engine 8.10
	7830 Series	Fabric Engine 9.3
	VSP 4900 Series	VOSS 8.1
	VSP 7400 Series	Fabric Engine 9.3
Secure Shell (SSH) client (IPv4)	4220 Series	Fabric Engine 9.2
	5320 Series	Fabric Engine 8.6
	5420 Series	VOSS 8.4
	5520 Series	VOSS 8.2.5
	5720 Series	Fabric Engine 8.7
	7520 Series	Fabric Engine 8.10
	7720 Series	Fabric Engine 8.10
	7830 Series	Fabric Engine 9.3
	VSP 4900 Series	VOSS 8.1
	VSP 7400 Series	VOSS 8.0

**Table 138: Secure Shell product support (continued)**

Feature	Product	Release introduced
Secure Sockets Layer (SSL) certificate management	4220 Series	Fabric Engine 9.2
	5320 Series	Fabric Engine 8.6
	5420 Series	VOSS 8.4
	5520 Series	VOSS 8.2.5
	5720 Series	Fabric Engine 8.7
	7520 Series	Fabric Engine 8.10
	7720 Series	Fabric Engine 8.10
	7830 Series	Fabric Engine 9.3
	VSP 4900 Series	VOSS 8.1
	VSP 7400 Series	VOSS 8.0
SSH server (IPv6)	4220 Series	Fabric Engine 9.2
	5320 Series	Fabric Engine 8.6
	5420 Series	VOSS 8.4
	5520 Series	VOSS 8.2.5
	5720 Series	Fabric Engine 8.7
	7520 Series	Fabric Engine 8.10
	7720 Series	Fabric Engine 8.10
	7830 Series	Fabric Engine 9.4
	VSP 4900 Series	VOSS 8.1
	VSP 7400 Series	VOSS 8.0
SSH client (IPv6)	4220 Series	Fabric Engine 9.2
	5320 Series	Fabric Engine 8.6
	5420 Series	VOSS 8.4
	5520 Series	VOSS 8.2.5
	5720 Series	Fabric Engine 8.7
	7520 Series	Fabric Engine 8.10
	7720 Series	Fabric Engine 8.10
	7830 Series	Fabric Engine 9.4
	VSP 4900 Series	VOSS 8.1
	VSP 7400 Series	VOSS 8.0

**Table 138: Secure Shell product support (continued)**

Feature	Product	Release introduced
SSH client disable	4220 Series	Fabric Engine 9.2
	5320 Series	Fabric Engine 8.6
	5420 Series	VOSS 8.4
	5520 Series	VOSS 8.2.5
	5720 Series	Fabric Engine 8.7
	7520 Series	Fabric Engine 8.10
	7720 Series	Fabric Engine 8.10
	7830 Series	Fabric Engine 9.3
	VSP 4900 Series	VOSS 8.1
	VSP 7400 Series	VOSS 8.0
SSH rekey	4220 Series	Fabric Engine 9.2
	5320 Series	Fabric Engine 8.6
	5420 Series	VOSS 8.4
	5520 Series	VOSS 8.2.5
	5720 Series	Fabric Engine 8.7
	7520 Series	Fabric Engine 8.10
	7720 Series	Fabric Engine 8.10
	7830 Series	Fabric Engine 9.3
	VSP 4900 Series	VOSS 8.1
	VSP 7400 Series	VOSS 8.0

**Table 139: Segmented Management Instance product support**

Feature	Product	Release introduced
Segmented Management Instance - Management Interface CLIP	4220 Series	Fabric Engine 9.2
	5320 Series	Fabric Engine 8.6
	5420 Series	VOSS 8.4
	5520 Series	VOSS 8.2.5
	5720 Series	Fabric Engine 8.7
	7520 Series	Fabric Engine 8.10
	7720 Series	Fabric Engine 8.10
	7830 Series	Fabric Engine 9.3
	VSP 4900 Series	VOSS 8.1
	VSP 7400 Series	VOSS 8.0

**Table 139: Segmented Management Instance product support (continued)**

Feature	Product	Release introduced
Segmented Management Instance - Management Interface OOB	4220 Series	Fabric Engine 9.2
	5320 Series	Fabric Engine 9.2 Supported on 5320-24T-4X-XT and 5320-24T-24S-4XE-XT
	5420 Series	VOSS 8.4
	5520 Series	VOSS 8.2.5
	5720 Series	Fabric Engine 8.7
	7520 Series	Fabric Engine 8.10
	7720 Series	Fabric Engine 8.10
	7830 Series	Fabric Engine 9.3
	VSP 4900 Series	VOSS 8.2
	VSP 7400 Series	VOSS 8.2
Segmented Management Instance - Management Interface VLAN	4220 Series	Fabric Engine 9.2
	5320 Series	Fabric Engine 8.6
	5420 Series	VOSS 8.4
	5520 Series	VOSS 8.2.5
	5720 Series	Fabric Engine 8.7
	7520 Series	Fabric Engine 8.10
	7720 Series	Fabric Engine 8.10
	7830 Series	Fabric Engine 9.3
	VSP 4900 Series	VOSS 8.1
	VSP 7400 Series	VOSS 8.0
Segmented Management Instance — ability to migrate VLAN or loopback IP address	4220 Series	Fabric Engine 9.2
	5320 Series	Fabric Engine 8.6
	5420 Series	VOSS 8.4
	5520 Series	VOSS 8.2.5
	5720 Series	Fabric Engine 8.7
	7520 Series	Fabric Engine 8.10
	7720 Series	Fabric Engine 8.10
	7830 Series	Fabric Engine 9.3
	VSP 4900 Series	VOSS 8.2
	VSP 7400 Series	VOSS 8.2



**Table 139: Segmented Management Instance product support (continued)**

Feature	Product	Release introduced
Segmented Management Instance — DHCP Client for Management Interface OOB or Management Interface VLAN	4220 Series	Fabric Engine 9.2
	5320 Series	Fabric Engine 8.6 OOB supported on 5320-24T-4X-XT and 5320-24T-24S-4XE-XT
	5420 Series	VOSS 8.4
	5520 Series	VOSS 8.2.5
	5720 Series	Fabric Engine 8.7
	7520 Series	Fabric Engine 8.10
	7720 Series	Fabric Engine 8.10
	7830 Series	Fabric Engine 9.3
	VSP 4900 Series	VOSS 8.2
	VSP 7400 Series	VOSS 8.2
Segmented Management Instance — sflow, Application Telemetry, and IPFIX	4220 Series	Fabric Engine 9.2 No IPFIX support
	5320 Series	Fabric Engine 8.8 IPFIX supported on 5320-48P-8XE, 5320-48T-8XE, and 5320-24T-24S-4XE-XT
	5420 Series	Fabric Engine 8.8
	5520 Series	Fabric Engine 8.8
	5720 Series	Fabric Engine 8.8
	7520 Series	Fabric Engine 8.10
	7720 Series	Fabric Engine 8.10
	7830 Series	Fabric Engine 9.4 Support for IPFIX only
	VSP 4900 Series	VOSS 8.8
	VSP 7400 Series	VOSS 8.8

**Table 139: Segmented Management Instance product support (continued)**

Feature	Product	Release introduced
Segmented Management Instance — ability to create a VLAN in routing mode	4220 Series	Fabric Engine 9.3
	5320 Series	Fabric Engine 9.3
	5420 Series	Fabric Engine 9.3
	5520 Series	Fabric Engine 9.3
	5720 Series	Fabric Engine 9.3
	7520 Series	Fabric Engine 9.3
	7720 Series	Fabric Engine 9.3
	7830 Series	Fabric Engine 9.3
	VSP 4900 Series	VOSS 9.3
	VSP 7400 Series	VOSS 9.3

**Table 140: Segmented VRF product support**

Feature	Product	Release introduced
Segmented VRF  <b>Note:</b> Only platforms that support multiple VRFs support this feature.	4220 Series	Not Supported The 4220 Series switches support only a single active VRF with IP configuration.
	5320 Series	Fabric Engine 9.4 For the 5320 Series, only the following models support more than one VRF with IP configuration: <ul style="list-style-type: none"> <li>• 5320-16P-2MXT-2X</li> <li>• 5320-24T-4X-XT</li> <li>• 5320-24T-24S-4XE-XT</li> </ul>

**Table 140: Segmented VRF product support (continued)**

Feature	Product	Release introduced
		<ul style="list-style-type: none"> <li>5320-48P-8XE</li> <li>5320-48T-8XE</li> </ul>
	5420 Series	Fabric Engine 9.4
	5520 Series	Fabric Engine 9.4
	5720 Series	Fabric Engine 9.4
	7520 Series	Fabric Engine 9.4
	7720 Series	Fabric Engine 9.4
	7830 Series	Not Supported
	VSP 4900 Series	VOSS 9.4
	VSP 7400 Series	VOSS 9.4

**Table 141: sFlow product support**

Feature	Product	Release introduced
sFlow	4220 Series	Fabric Engine 9.2
	5320 Series	Fabric Engine 8.6
	5420 Series	VOSS 8.4
	5520 Series	VOSS 8.2.5
	5720 Series	Fabric Engine 8.7
	7520 Series	Fabric Engine 8.10
	7720 Series	Fabric Engine 8.10
	7830 Series	Not Supported
	VSP 4900 Series	VOSS 8.1
	VSP 7400 Series	VOSS 8.0
sFlow — using Segmented Management Instance OOB interface as source IP	4220 Series	Fabric Engine 9.2
	5320 Series	Not Supported
	5420 Series	VOSS 8.4
	5520 Series	VOSS 8.2.5
	5720 Series	Fabric Engine 8.7
	7520 Series	Fabric Engine 8.10
	7720 Series	Fabric Engine 8.10
	7830 Series	Not Supported
	VSP 4900 Series	VOSS 8.8
	VSP 7400 Series	VOSS 8.8

**Table 141: sFlow product support (continued)**

Feature	Product	Release introduced
sFlow — using Segmented Management Instance VLAN interface as source IP	4220 Series	Fabric Engine 9.2
	5320 Series	Fabric Engine 8.8
	5420 Series	Fabric Engine 8.8
	5520 Series	Fabric Engine 8.8
	5720 Series	Fabric Engine 8.8
	7520 Series	Fabric Engine 8.10
	7720 Series	Fabric Engine 8.10
	7830 Series	Not Supported
	VSP 4900 Series	VOSS 8.8
	VSP 7400 Series	VOSS 8.8
sFlow — using Segmented Management Instance CLIP interface (GRT and VRFs) as source IP	4220 Series	Fabric Engine 9.2
	5320 Series	Fabric Engine 8.8
	5420 Series	Fabric Engine 8.8
	5520 Series	Fabric Engine 8.8
	5720 Series	Fabric Engine 8.8
	7520 Series	Fabric Engine 8.10
	7720 Series	Fabric Engine 8.10
	7830 Series	Not Supported
	VSP 4900 Series	VOSS 8.8
	VSP 7400 Series	VOSS 8.8

**Table 142: Simple Loop Prevention Protocol product support**

Feature	Product	Release introduced
	4220 Series	Fabric Engine 9.2

**Table 142: Simple Loop Prevention Protocol product support (continued)**

Feature	Product	Release introduced
Simple Loop Prevention Protocol (SLPP)	5320 Series	Fabric Engine 8.6
	5420 Series	VOSS 8.4
	5520 Series	VOSS 8.2.5
	5720 Series	Fabric Engine
	7520 Series	Fabric Engine 8.10
	7720 Series	Fabric Engine 8.10
	7830 Series	Fabric Engine 9.3
	VSP 4900 Series	VOSS 8.1
	VSP 7400 Series	VOSS 8.0

**Table 143: Simple Network Management Protocol product support**

Feature	Product	Release introduced
Simple Network Management Protocol (SNMP) v1/2/3 (IPv4)	4220 Series	Fabric Engine 9.2
	5320 Series	Fabric Engine 8.6
	5420 Series	VOSS 8.4
	5520 Series	VOSS 8.2.5
	5720 Series	Fabric Engine 8.7
	7520 Series	Fabric Engine 8.10
	7720 Series	Fabric Engine 8.10
	7830 Series	Fabric Engine 9.3
	VSP 4900 Series	VOSS 8.1
	VSP 7400 Series	VOSS 8.0

**Table 143: Simple Network Management Protocol product support (continued)**

Feature	Product	Release introduced
SNMP (IPv6)	4220 Series	Fabric Engine 9.2
	5320 Series	Fabric Engine 8.6
	5420 Series	VOSS 8.4
	5520 Series	VOSS 8.2.5
	5720 Series	Fabric Engine 8.7
	7520 Series	Fabric Engine 8.10
	7720 Series	Fabric Engine 8.10
	7830 Series	Not Supported
	VSP 4900 Series	VOSS 8.1
	VSP 7400 Series	VOSS 8.0

**Table 144: SLPP Guard product support**

Feature	Product	Release introduced
SLPP Guard	4220 Series	Fabric Engine 9.2
	5320 Series	Fabric Engine 8.6
	5420 Series	VOSS 8.4
	5520 Series	VOSS 8.2.5
	5720 Series	Fabric Engine 8.7
	7520 Series	Fabric Engine 8.10
	7720 Series	Fabric Engine 8.10
	7830 Series	Fabric Engine 9.4
	VSP 4900 Series	VOSS 8.1
	VSP 7400 Series	VOSS 8.0

**Table 145: SONMP product support**

Feature	Product	Release introduced
	4220 Series	Fabric Engine 9.2

**Table 145: SONMP product support (continued)**

Feature	Product	Release introduced
SONMP	5320 Series	Fabric Engine 8.6
	5420 Series	VOSS 8.4
	5520 Series	VOSS 8.2.5
	5720 Series	Fabric Engine 8.7
	7520 Series	Fabric Engine 8.10
	7720 Series	Fabric Engine 8.10
	7830 Series	Fabric Engine 9.3
	VSP 4900 Series	VOSS 8.1
	VSP 7400 Series	VOSS 8.0

**Table 146: Spanning Tree Protocol product support**

Feature	Product	Release introduced
Spanning Tree Protocol (STP): <ul style="list-style-type: none"> <li>• Multiple STP (MSTP)</li> <li>• Rapid STP (RSTP)</li> </ul>	4220 Series	Fabric Engine 9.2
	5320 Series	Fabric Engine 8.6
	5420 Series	VOSS 8.4
	5520 Series	VOSS 8.2.5
	5720 Series	Fabric Engine 8.7
	7520 Series	Fabric Engine 8.10
	7720 Series	Fabric Engine 8.10
	7830 Series	Fabric Engine 9.3  <b>Note:</b> 7830 Series does not support RSTP.
	VSP 4900 Series	VOSS 8.1
	VSP 7400 Series	VOSS 8.0

**Table 146: Spanning Tree Protocol product support (continued)**

Feature	Product	Release introduced
Multiple Spanning Tree Protocol (MSTP) Restricted Role (Root Guard) and Restricted Topology Change Notification (TCN)	4220 Series	Fabric Engine 9.4
	5320 Series	Fabric Engine 9.4
	5420 Series	Fabric Engine 9.4
	5520 Series	Fabric Engine 9.4
	5720 Series	Fabric Engine 9.4
	7520 Series	Fabric Engine 9.4
	7720 Series	Fabric Engine 9.4
	7830 Series	Fabric Engine 9.4
	VSP 4900	VOSS 9.4
	VSP 7400	VOSS 9.4

**Table 147: spbm-config-mode product support**

Feature	Product	Release introduced
spb-config-mode (boot config flags spbm-config-mode)	4220 Series	Fabric Engine 9.2
	5320 Series	Fabric Engine 8.6
	5420 Series	VOSS 8.4
	5520 Series	VOSS 8.2.5
	5720 Series	Fabric Engine 8.7
	7520 Series	Fabric Engine 8.10
	7720 Series	Fabric Engine 8.10
	7830 Series	Fabric Engine 9.3 <b>Note:</b> You cannot disable this flag.
	VSP 4900 Series	VOSS 8.1
	VSP 7400 Series	VOSS 8.0

**Table 148: SPB-PIM Gateway product support**

Feature	Product	Release introduced
	4220 Series	Not Supported



**Table 148: SPB-PIM Gateway product support (continued)**

Feature	Product	Release introduced
SPB-PIM Gateway controller node	5320 Series	Not Supported
	5420 Series	Not Supported
	5520 Series	VOSS 8.2.5
	5720 Series	Not Supported
	7520 Series	Fabric Engine 8.10
	7720 Series	Fabric Engine 8.10
	7830 Series	Not Supported
	VSP 4900 Series	VOSS 8.1.5 Not supported on VSP4900-48P
	VSP 7400 Series	VOSS 8.0
SPB-PIM Gateway interface	4220 Series	Not Supported
	5320 Series	Not Supported
	5420 Series	Not Supported
	5520 Series	VOSS 8.2.5
	5720 Series	Not Supported
	7520 Series	Fabric Engine 8.10
	7720 Series	Fabric Engine 8.10
	7830 Series	Not Supported
	VSP 4900 Series	VOSS 8.1
	VSP 7400 Series	VOSS 8.0

**Table 149: Static routing product support**

Feature	Product	Release introduced
Static routing	4220 Series	Fabric Engine 9.2 The 4220 Series switches support only a single active VRF with IP configuration.
	5320 Series	Fabric Engine 8.6 For the 5320 Series, only the following models support more than one VRF with IP configuration: <ul style="list-style-type: none"> <li>• 5320-16P-2MXT-2X</li> <li>• 5320-24T-4X-XT</li> <li>• 5320-24T-24S-4XE-XT</li> </ul>

**Table 149: Static routing product support (continued)**

Feature	Product	Release introduced
		<ul style="list-style-type: none"> <li>5320-48P-8XE</li> <li>5320-48T-8XE</li> </ul>
	5420 Series	VOSS 8.4
	5520 Series	VOSS 8.2.5
	5720 Series	Fabric Engine 8.7
	7520 Series	Fabric Engine 8.10
	7720 Series	Fabric Engine 8.10
	7830 Series	Fabric Engine 9.3
	VSP 4900 Series	VOSS 8.1
	VSP 7400 Series	VOSS 8.0

**Table 150: Storm Control product support**

Feature	Product	Release introduced
Storm Control	4220 Series	Fabric Engine 9.3
	5320 Series	Fabric Engine 9.3 Not Supported on 5320-16P-2MXT-2X
	5420 Series	Fabric Engine 9.3
	5520 Series	Fabric Engine 9.3
	5720 Series	Fabric Engine 9.3
	7520 Series	Fabric Engine 9.3
	7720 Series	Fabric Engine 9.3
	7830 Series	Not Supported
	VSP 4900 Series	Not Applicable
	VSP 7400 Series	VOSS 9.3

**Table 151: Subscription licenses product support**

Feature	Product	Release introduced
Subscription licenses applied via cloud-management applications  <b>Note:</b> Requires ExtremeCloud IQ Site Engine 25.2.10 or later	4220 Series	Fabric Engine 9.2
	5320 Series	Fabric Engine 9.2
	5420 Series	Fabric Engine 9.2
	5520 Series	Fabric Engine 9.2
	5720 Series	Fabric Engine 9.2
	7520 Series	Fabric Engine 9.2

**Table 151: Subscription licenses product support (continued)**

Feature	Product	Release introduced
ExtremeCloud IQ and Extreme Platform ONE Networking are automatically kept at the latest version.	7720 Series	Fabric Engine 9.2
	7830 Series	Fabric Engine 9.3
	VSP 4900 Series	Not Supported
	VSP 7400 Series	Not Supported

**Table 152: TACACS+ product support**

Feature	Product	Release introduced
TACACS+	4220 Series	Fabric Engine 9.2
	5320 Series	Fabric Engine 8.6
	5420 Series	VOSS 8.4
	5520 Series	VOSS 8.2.5
	5720 Series	Fabric Engine 8.7
	7520 Series	Fabric Engine 8.10
	7720 Series	Fabric Engine 8.10
	7830 Series	Fabric Engine 9.3
	VSP 4900 Series	VOSS 8.1
	VSP 7400 Series	VOSS 8.0
TACACS+ secure communication using IPSec for IPv4	4220 Series	Fabric Engine 9.2
	5320 Series	Fabric Engine 8.6
	5420 Series	VOSS 8.4
	5520 Series	VOSS 8.2.5
	5720 Series	Fabric Engine 8.7
	7520 Series	Fabric Engine 8.10
	7720 Series	Fabric Engine 8.10
	7830 Series	Fabric Engine 9.3
	VSP 4900 Series	VOSS 8.1
	VSP 7400 Series	VOSS 8.0

**Table 153: TCP Maximum Segment Size (MSS) Adjustment for Fabric Extend**

Feature	Product	Release introduced
	4220 Series	Fabric Engine 9.2
	5320 Series	Fabric Engine 8.6

**Table 153: TCP Maximum Segment Size (MSS) Adjustment for Fabric Extend (continued)**

Feature	Product	Release introduced
Ability to adjust the maximum segment size (MSS)	5420 Series	VOSS 8.5
	5520 Series	VOSS 8.5
	5720 Series	Fabric Engine 8.7
	7520 Series	Fabric Engine 8.10
	7720 Series	Fabric Engine 8.10
	7830 Series	Not Supported
	VSP 4900 Series	VOSS 8.3.1
	VSP 7400 Series	VOSS 8.3.1

**Table 154: Time Domain Reflectometer product support**

Feature	Product	Release introduced
Time Domain Reflectometer (Cable Diagnostic)	4220 Series	Fabric Engine 9.2
	5320 Series	Fabric Engine 9.0.2
	5420 Series	Fabric Engine 8.10 Not supported on 5420F-24S-4XE
	5520 Series	Fabric Engine 9.0.2 Not supported on 5520-24X or 5520-48SE
	5720 Series	Fabric Engine 9.0.2
	7520 Series	Fabric Engine 9.0.2 Supported on 7520-48XT-6C
	7720 Series	Not Supported
	7830 Series	Not Applicable
	VSP 4900 Series	Not Supported
	VSP 7400 Series	Not Supported

**Table 155: TLS server for secure HTTPS product support**

Feature	Product	Release introduced
	4220 Series	Fabric Engine 9.2

**Table 155: TLS server for secure HTTPS product support (continued)**

Feature	Product	Release introduced
TLS server for secure HTTPS	5320 Series	Fabric Engine 8.6
	5420 Series	VOSS 8.4
	5520 Series	VOSS 8.2.5
	5720 Series	Fabric Engine 8.7
	7520 Series	Fabric Engine 8.10
	7720 Series	Fabric Engine 8.10
	7830 Series	Fabric Engine 9.3
	VSP 4900 Series	VOSS 8.1
	VSP 7400 Series	VOSS 8.0

**Table 156: Two-Factor Authentication for SSH product support**

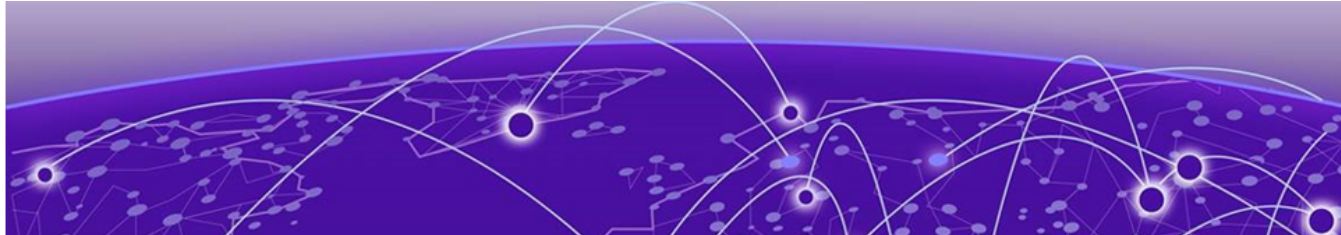
Feature	Product	Release introduced
Two-Factor Authentication for SSH	4220 Series	Fabric Engine 9.2
	5320 Series	Fabric Engine 8.6
	5420 Series	VOSS 8.4
	5520 Series	VOSS 8.2.5
	5720 Series	Fabric Engine 8.7
	7520 Series	Fabric Engine 8.10
	7720 Series	Fabric Engine 8.10
	7830 Series	Fabric Engine 9.3
	VSP 4900 Series	VOSS 8.1
	VSP 7400 Series	VOSS 8.0

**Table 157: Unicast Reverse Path Forwarding product support**

Feature	Product	Release introduced
Unicast Reverse Path Forwarding (URPF) checking (IPv4)	4220 Series	Not Supported
	5320 Series	Fabric Engine 8.6 Supported on 5320-48P-8XE, 5320-48T-8XE,

**Table 157: Unicast Reverse Path Forwarding product support (continued)**

Feature	Product	Release introduced
		5320-24T-24S-4XE-XT, and 5320-16P-2MXT-2X
	5420 Series	VOSS 8.4
	5520 Series	VOSS 8.2.5
	5720 Series	Fabric Engine 8.7
	7520 Series	Fabric Engine 8.10
	7720 Series	Fabric Engine 8.10
	7830 Series	Not Supported
	VSP 4900 Series	VOSS 8.1
	VSP 7400 Series	VOSS 8.0
Unicast Reverse Path Forwarding (URPF) checking (IPv6)	4220 Series	Not Supported
	5320 Series	Fabric Engine 8.6 Supported on 5320-48P-8XE, 5320-48T-8XE, and 5320-24T-24S-4XE-XT
	5420 Series	VOSS 8.4
	5520 Series	VOSS 8.2.5
	5720 Series	Fabric Engine 8.7
	7520 Series	Fabric Engine 8.10
	7720 Series	Fabric Engine 8.10
	7830 Series	Not Supported
	VSP 4900 Series	VOSS 8.1
	VSP 7400 Series	VOSS 8.0



## Features V to X

**Table 158: Virtual Inter-Switch Trunk product support**

Feature	Product	Release introduced
Switch cluster (multi-chassis LAG) -Virtual Inter-Switch Trunk (vIST)	4220 Series	Not Supported
	5320 Series	Not Supported
	5420 Series	VOSS 8.4
	5520 Series	VOSS 8.2.5
	5720 Series	Fabric Engine 8.7
	7520 Series	Fabric Engine 8.10
	7720 Series	Fabric Engine 8.10
	7830 Series	Fabric Engine 9.3
	VSP 4900 Series	VOSS 8.1
	VSP 7400 Series	VOSS 8.0

**Table 159: Virtual Link Aggregation Control Protocol (VLACP) product support**

Feature	Product	Release introduced
Virtual Link Aggregation Control Protocol (VLACP)	4220 Series	Fabric Engine 9.2
	5320 Series	Fabric Engine 8.6
	5420 Series	VOSS 8.4
	5520 Series	VOSS 8.2.5
	5720 Series	Fabric Engine 8.7
	7520 Series	Fabric Engine 8.10
	7720 Series	Fabric Engine 8.10
	7830 Series	Fabric Engine 9.3
	VSP 4900 Series	VOSS 8.1
	VSP 7400 Series	VOSS 8.0

**Table 159: Virtual Link Aggregation Control Protocol (VLACP) product support (continued)**

Feature	Product	Release introduced
VLACP Flap Detect and Damping	4220 Series	Fabric Engine 9.2
	5320 Series	Fabric Engine 8.6
	5420 Series	VOSS 8.4
	5520 Series	VOSS 8.2.5
	5720 Series	Fabric Engine 8.7
	7520 Series	Fabric Engine 8.10
	7720 Series	Fabric Engine 8.10
	7830 Series	Fabric Engine 9.3
	VSP 4900 Series	VOSS 8.1
	VSP 7400 Series	VOSS 8.1

**Table 160: Virtual Router Redundancy Protocol product support**

Feature	Product	Release introduced
Virtual Router Redundancy Protocol (VRRP)	4220 Series	Fabric Engine 9.2
	5320 Series	Fabric Engine 8.6
	5420 Series	VOSS 8.4
	5520 Series	VOSS 8.2.5
	5720 Series	Fabric Engine 8.7
	7520 Series	Fabric Engine 8.10
	7720 Series	Fabric Engine 8.10
	7830 Series	Fabric Engine 9.3
	VSP 4900 Series	VOSS 8.1
	VSP 7400 Series	VOSS 8.0



**Table 160: Virtual Router Redundancy Protocol product support (continued)**

Feature	Product	Release introduced
VRRPv3 for IPv4	4220 Series	Fabric Engine 9.2
	5320 Series	Fabric Engine 8.6
	5420 Series	VOSS 8.4
	5520 Series	VOSS 8.2.5
	5720 Series	Fabric Engine 8.7
	7520 Series	Fabric Engine 8.10
	7720 Series	Fabric Engine 8.10
	7830 Series	Fabric Engine 9.3
	VSP 4900 Series	VOSS 8.1
	VSP 7400 Series	VOSS 8.0

**Table 161: Virtual Router Redundancy Protocol for IPv6 product support**

Feature	Product	Release introduced
IPv6 VRRP	4220 Series	Not Supported
	5320 Series	Fabric Engine 8.6
	5420 Series	VOSS 8.4
	5520 Series	VOSS 8.2.5
	5720 Series	Fabric Engine 8.7
	7520 Series	Fabric Engine 8.10
	7720 Series	Fabric Engine 8.10
	7830 Series	Fabric Engine 9.4
	VSP 4900 Series	VOSS 8.1
	VSP 7400 Series	VOSS 8.0

**Table 161: Virtual Router Redundancy Protocol for IPv6 product support (continued)**

Feature	Product	Release introduced
VRRPv3 for IPv6	4220 Series	Not Supported
	5320 Series	Fabric Engine 8.6
	5420 Series	VOSS 8.4
	5520 Series	VOSS 8.2.5
	5720 Series	Fabric Engine 8.7
	7520 Series	Fabric Engine 8.10
	7720 Series	Fabric Engine 8.10
	7830 Series	Fabric Engine 9.4
	VSP 4900 Series	VOSS 8.1
	VSP 7400 Series	VOSS 8.0

**Table 162: Virtual Routing and Forwarding product support**

Feature	Product	Release introduced
Virtual Routing and Forwarding	4220 Series	Fabric Engine 9.2 The 4220 Series switches support only a single active VRF with IP configuration.
	5320 Series	Fabric Engine 8.6 For the 5320 Series, only the following models support more than one VRF with IP configuration: <ul style="list-style-type: none"> <li>• 5320-16P-2MXT-2X</li> <li>• 5320-24T-4X-XT</li> <li>• 5320-24T-24S-4XE-XT</li> <li>• 5320-48P-8XE</li> <li>• 5320-48T-8XE</li> </ul>
	5420 Series	VOSS 8.4
	5520 Series	VOSS 8.2.5
	5720 Series	Fabric Engine 8.7
	7520 Series	Fabric Engine 8.10
	7720 Series	Fabric Engine 8.10
	7830 Series	Fabric Engine 9.3
	VSP 4900 Series	VOSS 8.1
	VSP 7400 Series	VOSS 8.0

**Table 162: Virtual Routing and Forwarding product support (continued)**

Feature	Product	Release introduced
Inter-VRF Routing	4220 Series	Fabric Engine 9.2 The 4220 Series switches support only a single active VRF with IP configuration.
	5320 Series	Fabric Engine 8.6 For the 5320 Series, only the following models support more than one VRF with IP configuration: <ul style="list-style-type: none"> <li>• 5320-16P-2MXT-2X</li> <li>• 5320-24T-4X-XT</li> <li>• 5320-24T-24S-4XE-XT</li> <li>• 5320-48P-8XE</li> <li>• 5320-48T-8XE</li> </ul>
	5420 Series	VOSS 8.4
	5520 Series	Fabric Engine 8.2.5
	5720 Series	Fabric Engine 8.7
	7520 Series	Fabric Engine 8.10
	7720 Series	Fabric Engine 8.10
	7830 Series	Fabric Engine 9.4
	VSP 4900 Series	VOSS 8.1
	VSP 7400 Series	VOSS 8.0

**Table 162: Virtual Routing and Forwarding product support (continued)**

Feature	Product	Release introduced
Increased VRF and Layer 3 VSN scaling	4220 Series	Not Supported
	5320 Series	Fabric Engine 8.6 For the 5320 Series, only the following models support more than one VRF with IP configuration: <ul style="list-style-type: none"> <li>• 5320-16P-2MXT-2X</li> <li>• 5320-24T-4X-XT</li> <li>• 5320-24T-24S-4XE-XT</li> <li>• 5320-48P-8XE</li> <li>• 5320-48T-8XE</li> </ul> <b>Note:</b> The <b>boot config flag vrf-scaling</b> command does not apply to 5320-16P-2MXT-2X or 5320-24T-4X-XT.
	5420 Series	VOSS 8.4
	5520 Series	VOSS 8.2.5
	5720 Series	Fabric Engine 8.7
	7520 Series	Fabric Engine 8.10
	7720 Series	Fabric Engine 8.10
	7830 Series	Fabric Engine 9.3
	VSP 4900 Series	VOSS 8.1
	VSP 7400 Series	VOSS 8.0

**Table 162: Virtual Routing and Forwarding product support (continued)**

Feature	Product	Release introduced
IBGP over user-created VRFs	4220 Series	Not Supported
	5320 Series	Fabric Engine 8.6 For the 5320 Series, only the following models support more than one VRF with IP configuration: <ul style="list-style-type: none"> <li>• 5320-16P-2MXT-2X</li> <li>• 5320-24T-4X-XT</li> <li>• 5320-24T-24S-4XE-XT</li> <li>• 5320-48P-8XE</li> <li>• 5320-48T-8XE</li> </ul>
	5420 Series	VOSS 8.4
	5520 Series	VOSS 8.2.5
	5720 Series	Fabric Engine 8.7
	7520 Series	Fabric Engine 8.10
	7720 Series	Fabric Engine 8.10
	7830 Series	Fabric Engine 9.3
	VSP 4900 Series	VOSS 8.1
	VSP 7400 Series	VOSS 8.1

**Table 162: Virtual Routing and Forwarding product support (continued)**

Feature	Product	Release introduced
IPv6 Virtual Routing and Forwarding	4220 Series	Not Supported
	5320 Series	Fabric Engine 8.6 For the 5320 Series, only the following models support more than one VRF with IP configuration: <ul style="list-style-type: none"> <li>• 5320-16P-2MXT-2X</li> <li>• 5320-24T-4X-XT</li> <li>• 5320-24T-24S-4XE-XT</li> <li>• 5320-48P-8XE</li> <li>• 5320-48T-8XE</li> </ul>
	5420 Series	VOSS 8.4
	5520 Series	VOSS 8.2.5
	5720 Series	Fabric Engine 8.7
	7520 Series	Fabric Engine 8.10
	7720 Series	Fabric Engine 8.10
	7830 Series	Fabric Engine 9.4
	VSP 4900 Series	VOSS 8.1
	VSP 7400 Series	VOSS 8.0

**Table 163: VXLAN Gateway product support**

Feature	Product	Release introduced
VXLAN Gateway	4220 Series	Not Supported
	5320 Series	Not Supported
	5420 Series	Not Supported
	5520 Series	Not Supported
	5720 Series	Not Supported
	7520 Series	Fabric Engine 8.10
	7720 Series	Fabric Engine 8.10
	7830 Series	Not Supported
	VSP 4900 Series	Not Supported
	VSP 7400 Series	VOSS 8.0

**Table 163: VXLAN Gateway product support (continued)**

Feature	Product	Release introduced
OVSDB protocol support for VXLAN Gateway	4220 Series	Not Supported
	5320 Series	Not Supported
	5420 Series	Not Supported
	5520 Series	Not Supported
	5720 Series	Not Supported
	7520 Series	Fabric Engine 8.10
	7720 Series	Fabric Engine 8.10
	7830 Series	Not Supported
	VSP 4900 Series	Not Supported
	VSP 7400 Series	VOSS 8.0
ECMP support for VXLAN Gateway	4220 Series	Not Supported
	5320 Series	Not Supported
	5420 Series	Not Supported
	5520 Series	Not Supported
	5720 Series	Not Supported
	7520 Series	Fabric Engine 8.10
	7720 Series	Fabric Engine 8.10
	7830 Series	Not Supported
	VSP 4900 Series	Not Supported
	VSP 7400 Series	VOSS 8.0



## Features Y and Z

**Table 164: Zero Touch Deployment product support**

Feature	Product	Release introduced
Zero Touch Deployment	4220 Series	Fabric Engine 9.2
	5320 Series	Fabric Engine 8.6
	5420 Series	VOSS 8.4
	5520 Series	VOSS 8.2.5
	5720 Series	Fabric Engine 8.7
	7520 Series	Fabric Engine 8.10
	7720 Series	Fabric Engine 8.10
	7830 Series	Fabric Engine 9.3
	VSP 4900 Series	VOSS 8.2 Not supported on VIM5-2Q
	VSP 7400 Series	VOSS 8.2

**Table 165: Zero Touch Fabric Configuration product support**

Feature	Product	Release introduced
Zero Touch Fabric Configuration	4220 Series	Fabric Engine 9.2
	5320 Series	Fabric Engine 8.6
	5420 Series	VOSS 8.4
	5520 Series	VOSS 8.2.5
	5720 Series	Fabric Engine 8.7
	7520 Series	Fabric Engine 8.10
	7720 Series	Fabric Engine 8.10
	7830 Series	Fabric Engine 9.3
	VSP 4900 Series	VOSS 8.1
	VSP 7400 Series	VOSS 8.0.5



**Table 165: Zero Touch Fabric Configuration product support (continued)**

Feature	Product	Release introduced
LLDP Fabric Connect TLV	4220 Series	Fabric Engine 9.2
	5320 Series	Fabric Engine 8.6
	5420 Series	VOSS 8.4
	5520 Series	VOSS 8.2.5
	5720 Series	Fabric Engine 8.7
	7520 Series	Fabric Engine 8.10
	7720 Series	Fabric Engine 8.10
	7830 Series	Fabric Engine 9.3
	VSP 4900 Series	VOSS 8.3
	VSP 7400 Series	VOSS 8.3

**Table 166: Zero Touch Provisioning Plus product support**

Feature	Product	Release introduced
Zero Touch Provisioning Plus	4220 Series	Fabric Engine 9.2
	5320 Series	Fabric Engine 8.6
	5420 Series	VOSS 8.4
	5520 Series	VOSS 8.2.5
	5720 Series	Fabric Engine 8.7
	7520 Series	Fabric Engine 8.10
	7720 Series	Fabric Engine 8.10
	7830 Series	Fabric Engine 9.3
	VSP 4900 Series	VOSS 8.2.5
	VSP 7400 Series	VOSS 8.2.5