



ExtremeCloud IQ v25.2.0.126 Release Notes

Enhancements, Fixes, and Supported Devices

9039241-00 Rev AB
March 2025



Copyright © 2025 Extreme Networks, Inc. All rights reserved.

Legal Notice

Extreme Networks, Inc. reserves the right to make changes in specifications and other information contained in this document and its website without prior notice. The reader should in all cases consult representatives of Extreme Networks to determine whether any such changes have been made.

The hardware, firmware, software or any specifications described or referred to in this document are subject to change without notice.

Trademarks

Extreme Networks and the Extreme Networks logo are trademarks or registered trademarks of Extreme Networks, Inc. in the United States and/or other countries.

All other names (including any product names) mentioned in this document are the property of their respective owners and may be trademarks or registered trademarks of their respective companies/owners.

For additional information on Extreme Networks trademarks, see: <https://www.extremenetworks.com/about-extreme-networks/company/legal/trademarks>

Open Source Declarations

Some software files have been licensed under certain open source or third-party licenses.

End-user license agreements and open source declarations can be found at: <https://www.extremenetworks.com/support/policies/open-source-declaration/>



Table of Contents

Abstract.....	iv
Help and Support.....	v
General Release Information.....	6
Current Release: 25.2.0.126.....	6
ExtremeCloud IQ Public IP Address Blocks.....	6
Supported IQ Engine v10.8.1 Software.....	7
New Features in 25.2.0.126.....	8
Addressed Issues in 25.2.0.126.....	12
Known Issues in 25.2.0.126.....	14
Device Support Information.....	17
Controllers.....	17
Access Points.....	18
Universal Hardware.....	18
IQ Engine (Cloud Native).....	19
ExtremeWireless WiNG.....	20
Extreme Wireless.....	21
Switches.....	22
Universal Hardware.....	23
ExtremeXOS.....	38
VOSS.....	43
Dell EMC.....	44
Routers.....	45
ExtremeCloud IQ Site Engine.....	46
ExtremeCloud IQ CoPilot.....	49
ExtremeCloud A3.....	49
Supported Browsers and Display Settings.....	49
Desktop and Mobile Browser Support.....	49
Display Settings.....	50



Abstract

The release notes for ExtremeCloud IQ version 25.2.0.126 provide detailed information on several technical enhancements, new features, and critical fixes introduced in this release for network administrators managing the ExtremeCloud IQ platform. Key technical points include support for advanced device operating systems such as ExtremeXOS/Switch Engine (33.2) and VOSS/Fabric Engine (9.1.0.1), alongside IQ Engine 10.7.5, 10.7.5b, or 10.8.1 for improved network orchestration. Notable new features include LLDP configuration with multicast filters, enhanced ELRP settings for port management, and WPA3-SAE support with Protected Management Frames (PMF) for 6 GHz radios. The AP5020 now supports dynamic packet capture and dual 5 GHz/6 GHz radio modes, improving wireless performance diagnostics. Additionally, new VLAN attributes, real-time RF heat maps, and roaming trail visualization on the client map enhance network management. Addressed issues include performance fixes for AP5020 wired speed display, client session duplication, and syslog hostname configurations. Known issues highlight potential configuration push errors, Wi-Fi 6E support limitations, and unresolved firmware version discrepancies for certain devices. This release is designed for IT professionals and network engineers focused on optimizing and troubleshooting complex wireless deployments.



Help and Support

If you require assistance, contact Extreme Networks using one of the following methods:

Extreme Portal

Search the GTAC (Global Technical Assistance Center) knowledge base; manage support cases and service contracts; download software; and obtain product licensing, training, and certifications.

The Hub

A forum for Extreme Networks customers to connect with one another, answer questions, and share ideas and feedback. This community is monitored by Extreme Networks employees, but is not intended to replace specific guidance from GTAC.

Call GTAC

For immediate support: (800) 998 2408 (toll-free in U.S. and Canada) or 1 (408) 579 2800. For the support phone number in your country, visit www.extremenetworks.com/support/contact.



General Release Information

Current Release: 25.2.0.126

March 2025

ExtremeCloud IQ Public IP Address Blocks

Data Center	IP Block	Addresses and Ports
Global Data Center (GDC)	44.234.22.92/30 18.194.95.0/28 34.253.190.192/26 3.234.248.0/27	
Australia (AUS)	13.210.3.192/28	Firewall Address and Port Information
Azure, Canada Central (ACA)	20.151.64.48/28	Firewall Address and Port Information
Azure, US East (AVA)	52.226.89.112/28	Firewall Address and Port Information
Brazil (BR)	18.228.70.16/28	Firewall Address and Port Information
Germany (FRA)	3.67.81.96/27 18.194.95.0/28	Firewall Address and Port Information
India (IN)	13.232.67.8/29 3.6.70.64/29	Firewall Address and Port Information
Ireland (IE)	34.253.190.192/26	Firewall Address and Port Information
Japan (JP)	18.176.203.112/29 13.231.6.232/29 57.181.58.0/28	Firewall Address and Port Information
Netherlands (NL-GCP)	34.91.82.64/27	Firewall Address and Port Information
Singapore (SG-GCP)	34.87.158.80/28	Firewall Address and Port Information
Spain (ES)	18.101.49.128/27	Firewall Address and Port Information
Sweden (SE)	13.48.186.224/29 13.48.4.184/29 13.48.4.240/28	Firewall Address and Port Information
Switzerland (ACH)	51.107.1.192/28	Firewall Address and Port Information

Data Center	IP Block	Addresses and Ports
United Arab Emirates (UAE)	3.28.159.128/28	Firewall Address and Port Information
United Kingdom (UK-AGB)	51.143.233.80/28	Firewall Address and Port Information
US East (VA)	34.202.197.0/26 44.192.245.0/26 3.234.248.0/27	Firewall Address and Port Information
US East 2 (VA2)	34.202.197.0/26 44.192.245.0/26 3.234.248.0/27	Firewall Address and Port Information
US-Iowa (IA-GCP)	34.67.130.64/27	Firewall Address and Port Information
US Ohio (OH)	3.145.235.64/26	Firewall Address and Port Information

Supported IQ Engine v10.8.1 Software

See the [IQ Engine Release Notes](#) for information about the current release of IQ Engine.



New Features in 25.2.0.126

Device OS Support

This release supports the following device operating systems:

- **ExtremeXOS/Switch Engine:**
 - 31.7.3.37 Patch 1-54 Image Download Support
 - 33.2 Image Download Support
 - 33.2 Onboard, Monitor, Config, Image Drag & Drop Support
 - 32.6.3.127 Patch 1-X Onboard, Monitor, Config, Image Drag & Drop Support
 - 32.7.1.9 Patch 1-X Image Download Support
 - 32.7.1.9 Patch 1-X Onboard, Monitor, Config, Image Drag & Drop Support
 - EXOS IQAgent—Switch Engine supports IQAgent 0.9.8/1.9.8 (0.9.8 for NOS versions <= 33.1 1.9.8 for NOS versions >= 33.2)
- **VOSS/Fabric Engine:**
 - VOSS IQAgent 0.9.13—Fabric Engine supports IQAgent 0.9.13
 - VOSS/Fabric Engine 9.1.0.1—for all supported VSP/Fabric Engine SKUs
- **IQ Engine:**
 - IQ Engine 10.8.1

New Hardware Support

This release adds support for the AP4020.

Table 1: New Extreme Essentials Features in 24.7.0

Feature ID	Feature	Description
XESS-1704	Ability to choose password length and strength for guest user authentication	ExtremeCloud IQ provides a simplified alpha-numeric password generation option for customers to copy the passcode.

Table 2: New Features in 25.2.0.126

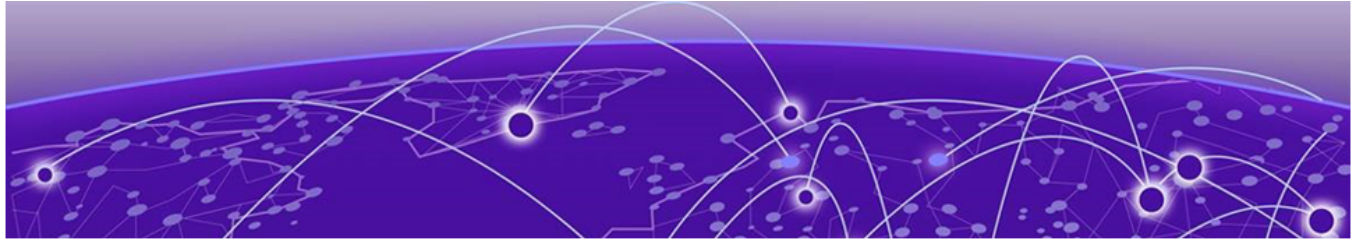
Feature ID	Feature	Description
XCP-1239	Signal the License Level to NOS	ExtremeCloud IQ signals the license state to the universal switches, the universal switches provide premier features when managed by ExtremeCloud IQ. For more information, see the Release Notes for your switches. Connect level ExtremeCloud IQ does not provide premier features for universal switches.
XCP-1326	Deprecate Legacy Entitlement Keys	Legacy Entitlement Keys are unsupported by the new licensing schema. To benefit from new features, contact GTAC to transition from Legacy Entitlement Keys to new licenses. The option to add additional Legacy Entitlement Keys is deprecated.
XIQ-3542	AP5010: Support for Dual Ethernet Redundancy	AP5010 supports Ethernet redundancy.
XIQ-26459	AP5020: Imagotag/ESL Support for SES imagotag Dongle	AP5020 supports SES-Imagotag.
XIQ-31116	AP5020: High-density feature support	ExtremeCloud IQ supports high-density wireless features such as band steering, load balancing, weak signal probe request suppression, and safety net for the AP5020 2.4 and 5 GHz radios.
XIQ-31301	Support for IQE 10.8.1	ExtremeCloud IQ supports IQ Engine 10.8.1.
XIQ-31424	Support for onboarding for CE2000 (medium UCP based controller) on the cloud	ExtremeCloud IQ supports CE2000.
XIQ-31425	Support for onboarding for CE3000 (large UCP based controller) on the cloud	ExtremeCloud IQ supports CE3000.

Table 2: New Features in 25.2.0.126 (continued)

Feature ID	Feature	Description
XIQ-32319	AP 5020/4020 IOT Scans: Option to remove duplicate entries in HTTP post	By default, the BLE scan results for cloud and batch reporting do not contain duplicates. You can enable duplicates for batch reporting only.
XIQ-32605	AP5020: WiFi 7 11BE - Support for UL MU-MIMO	ExtremeCloud IQ supports UL-MU-MIMO configuration for the AP5020.
XIQ-35231	AP4020 GA support	ExtremeCloud IQ supports the AP4020—a 2x2:2 WiFi 7 access point that supports two operator modes: Mode 1: 2.4 GHz /5 GHz/6 GHz data & Mode 2: 2.4 GHz, and dual 5 GHz.
XIQ-35239	AP4020 - WiFi mesh support	ExtremeCloud IQ supports wireless backhaul mesh configuration for the AP4020.
XIQ-35418	AP4020: Support for UL MU-MIMO	AP5020 supports Uplink MU-MIMO.
XIQ-35542	AP5020: HotSpot 2.0 Configuration In ExtremeCloud IQ SSID	AP5020 supports HotSpot 2.0 SSID configuration.
XIQ-35718	Rotate maps during floor creation	Real-time maps support rotating the floor map for a more convenient view.
XIQ-35778	New Maps: Improve client roaming visual display	Improvements to the client roaming display include additional information and the ability to distinguish actual roaming from disconnect/connect roaming.
XIQ-36988	AP4020: Enable LLDP by default	LLDP is enabled by default in ExtremeCloud IQ. This behavior applies when onboarding the AP4020.
XIQ-37137	New API to load SSID Profile Info on Network Policy	The new API improves the load time for SSID Profile Info for a Network Policy.
XIQ-38166	AP4020: Support 802.3az Green Ethernet for AP4020 - UI support	ExtremeCloud IQ supports Energy-Efficient Ethernet (EEE), or IEEE 802.3az, for the AP4020. This feature reduces energy consumption for physical layer transmitters during idle periods or low data activity. To enable this feature in ExtremeCloud IQ, go to the Wired Port Configuration in Device360 or the AP4020 Device Template.

Table 2: New Features in 25.2.0.126 (continued)

Feature ID	Feature	Description
XIQ-38229	Tunnel Concentrator UCP 3150C support	Tunnel Concentrator supports the new 3150C hardware appliance. The Universal Compute Platform 3150C appliance (self-orchestrated mode) replaces the 4120C appliance. The 3150C appliance supports up to three instances of Tunnel Concentrator (total of 15,000 AP support). For more information, see the Tunnel Concentrator and Universal Compute Platform datasheet.
XIQ-38315	ExtremeCloud IQ support for AP5050U/D ePacket Capture	AP5050U/D supports using Enhanced Packet Capture, instead of Legacy Packet Capture.
XIQ-39122	Fabric Engine/VOSS 9.1.1 Onboard, Monitor, Config, and Download Image Support	ExtremeCloud IQ supports Fabric Engine/VOSS 9.1.1 image download for all supported VSP/Fabric Engine SKUs.
XIQ-39125	Fabric Engine/VOSS 9.2 XIQ Onboard, monitor, config support with image drag & drop	ExtremeCloud IQ supports onboarding, monitoring, and configuration with image drag & drop for Fabric Engine/VOSS 9.2. Supported switch models are 7720, 7520, 5720, 5520, 5420, and 5320 Universal switches, as well as VSP7400, and VSP4900.



Addressed Issues in 25.2.0.126

Table 3: Addressed Issues in 25.2.0.126

Issue ID	Description
CFD-12155 (02991680)	We resolved an issue where Cloud PPSK clients got disconnected 10 minutes after association because IDM accounting cannot handle SSID names with an ampersand (&).
CFD-12486 (03010596)	We resolved an issue where ExtremeCloud IQ did not create a Rate Limit object when configuring a user profile.
CFD-12619 (03010972, 03018118, 03027103, 03038206)	We resolved an issue that prevented making or saving changes to the wifi0 interface at the device level.
CFD-12677 (03019620)	We resolved an issue with anomalous output in the daily report for a location caused by missing IP addresses and user values.
CFD-12716 (03022258, 03022258)	We resolved an issue where ExtremeCloud IQ displayed a banner for the CoPilot grace period warning about non-Copilot devices.
CFD-12983 (03041868)	We resolved an issue where ExtremeCloud IQ consumed a license for some switches onboarded as managed locally.
CFD-13000 (03041033)	We resolved an issue where ExtremeCloud IQ unnecessarily generated "no forwarding-engine proxy-arp unicast enable" to AC model AP when the Proxy ARP setting is Legacy (default setting).
CFD-13016 (03039405)	We resolved an issue for AP302W in router mode, where delta push was blocked for all policy updates whether in policy or branch routing.
CFD-13031 (03044377)	We resolved an issue where attempts to export inventory from Manage > Devices stalled at 5 to 90 percent complete. During the export, admin access to other ExtremeCloud IQ instances was sluggish.
CFD-13126 (03044331)	We resolved an issue in Planning where the Swap Device dialog did not have paging and was not searchable if the AP device count exceeded 100 devices.
CFD-13187 (03031923)	We resolved an issue where an unknown error occurred when filtering the Manage > Devices list by Pilot device license .
CFD-13193 (03045061)	We resolved an issue where customers in China could not receive SMS messages. We extended the max length of Unicode characters for SMS messages from 70 to 160 to allow for common Chinese characters without splitting the message.

Table 3: Addressed Issues in 25.2.0.126 (continued)

Issue ID	Description
CFD-13198 (03036261)	We resolved a sorting issue in port types where only the visible (per page) data was sorted instead of the entire list.
CFD-13199 (03052607)	We resolved an issue where Elasticsearch could not handle a large amount of data and failed to retrieve the Client 360 data, resulting in an error.
CFD-13247 (03057687)	We resolved an issue where ExtremeCloud IQ displayed an error when creating a single port LAG on an EXOS switch. ExtremeCloud IQ supports the creation of a single port LAG for Switch Engine.
CFD-13289 (03060652)	We resolved an issue where some navigation menu items were not translated into Japanese .
CFD-13320 (03062708, 03065381, 03065937, 03070170, 03070683, 03065290, 03070686, 03060008, 03072851)	We resolved an issue that occurred after upgrading to ExtremeCloud IQ Release 25.1, where a CLI error prevented updates for APs.
CFD-13448 (03071739, 03071280,03071564 , 03072603)	We resolved an issue where APs were stuck on audit mismatch with a Conflict Error preventing delta updates.



Known Issues in 25.2.0.126

The following table lists known product issues. Issues are grouped according to ID prefix and sorted within their group with the most recently logged issue listed first. (Issue IDs are in descending order.)

Table 4: Known Issues in 25.2.0.126

Issue ID	Description
EXOS-37458	When using ExtremeCloud IQ to configure a single port in a VLAN as an LLDP voice port with Med Capabilities and policies and then changing the port type to access or trunk , the LLDP configuration for Med Capabilities appears on ExtremeXOS/ Switch Engine devices running EXOS 33.2.
XIQ-39282	After successfully onboarding locally managed APs, a misleading Device Update Failed message might appear in the Last Updated field. This is only a display issue and does not affect any functionality.
XIQ-34912	Clients discovered through node alias or DHCP snooping fingerprint might not immediately appear in the Device 360 Clients table. It can take up to 10 minutes for the new entries to appear in the Device 360 Clients table.
XIQ-34908	When using a stack template with a Link Aggregation Group (LAG), if the LAG has ports from different slots, you must enable Instant Port Profile/Instant Secure Port from the LAG on the template view that contains the master port. This requirement applies to a preexisting Link Aggregation Group in the template, or when creating a new Link Aggregation Group.
XIQ-34846	On wired VOSS and Fabric Engine devices for Cisco Discovery Protocol (CDP), configuration pushed via ExtremeCloud IQ still requires enabling LLDP TX/RX status through device CLI, for a CDP neighbor to establish.
XIQ-34724	Delta configuration push fails for Wifi0 with dual 5G mode when 5G-Low channels are not supported.
XIQ-33709	Some IP VLAN pairs from the Client 360 table and Client pages might be missing if they have multiple IPs learned through Node Alias events.
XIQ-33498	AP5050 AFC 6GHz FCC does not support client mode.

Table 4: Known Issues in 25.2.0.126 (continued)

Issue ID	Description
XIQ-33103	The AFC View on the Manage Device page displays <i>qualified</i> AFC-governed 6 GHz access points. This feature requires version 10.7.2 or higher. The AFC View does not include onboarded devices with a firmware version earlier than the minimum required version. After upgrading to the minimum required version, the AFC View displays the qualified access points.
XIQ-32459	The ExtremeCloud IQ deployment API HTTP Success status code changed from 200 to 202.
XIQ-31639	The IoT heat map is always shown, regardless of whether an IoT profile is configured on the AP. There is no status for IoT radios in the API.
XIQ-31601	A perimeter added or modified from the Planning page does not sync with the Realtime maps page.
XIQ-31433	The Cloud Service component of iBeacon is temporarily disabled. This service will be available in a future release.
XIQ-26907	A delta configuration push error might occur when configuring the port Forwarding Rule for Client Mode. Workaround: Push a complete configuration update.
XIQ-21339	ExtremeCloud IQ does not display the error when aggregation is enabled with a rate-limit configuration.
XIQ-20909	When configuring 6GHz radio for a country that does not support it, the configuration push to the AP3000 fails. Workaround: Revert to 2.4 GHz.
XIQ-19977	The MCast rate configured in an AP template does not take effect when sCLI is presented.
XIQ-19509	Access points go offline when pushed to minimum speed and half duplex transmission mode for eth0, and then they reboot. After the reboot, the configuration reverts back to minimum speed with full duplex.
XIQ-19498	When the AP5010 eth0 interface is operating with maximum speed, changing the transmission type causes ExtremeCloud IQ to also generate a delta CLI for speed.
XIQ-19379	When you initiate a "release to the cloud" from the controller, for an AP3000 that was onboarded as locally managed, the system deletes the AP from ExtremeCloud IQ Controller but not from ExtremeCloud IQ.
XIQ-19368	The user interface overrides Supplemental CLI. If you add an sCLI object and there is a code conflict with the GUI, the GUI has priority. To give the sCLI priority, place the sCLI code at the bottom of the command structure in the audit.
XIQ-19320	The Wi-Fi Interface Transmission power does not update in the Managed Device page after a bulk edit.

Table 4: Known Issues in 25.2.0.126 (continued)

Issue ID	Description
XIQ-12503	Network 360 shows Unknown Error when All Access Points Applications is selected and the user selects both ExtremeWireless WiNG and IQ Engine devices. Workaround: Clear selected ExtremeWireless WiNG devices.
XIQ-5700	Client Trial showed only the currently connected AP when the client roamed to a different AP from the onboarded ExtremeCloud IQ Controller.
CFD-11529 (02957942)	API response data is unclear.
CFD-10699 (02906999)	Universal Access Points failed to complete the WiNG-OS conversion, even after a successful CAPWAP and STUN binding.
CFD-8946 (02710778, 02748750)	License descriptions are automatically cleared when the Activated status is updated.
CFD-7360 (02498292)	For Wing-AP sites, contrary to present implementation, customers expect to see APs offline when ExtremeCloud IQ / nsight policy is not used for that site.
APC-41057	Legend labels on the SR2200/2300 switch stack graph sometimes disappear when attempting to download or print the graph. Workaround: Download one graph at a time, and open the downloaded file before choosing to download again. Note: The SVG option is the most stable format; PNG, JPG, and PDF have spacing issues on the legend section.
APC-21456	In rare cases, ExtremeCloud IQ does not upload some IGMP sub-commands successfully. Note: SR2200/2300 only. Workaround: Use the Supplemental CLI to upload commands when necessary. To use the supplemental CLI tool, go to Global Settings > VIQ Management , and set the Supplemental CLI slider to ON .



Device Support Information

- [Controllers](#) on page 17
- [Access Points](#) on page 18
- [Switches](#) on page 22
- [Routers](#) on page 45
- [ExtremeCloud IQ Site Engine](#) on page 46
- [ExtremeCloud IQ CoPilot](#) on page 49
- [ExtremeCloud A3](#) on page 49
- [Supported Browsers and Display Settings](#) on page 49

This section lists the devices that ExtremeCloud IQ supports and includes the latest version of the software that each device supports.

Controllers

Device Model	Latest Supported Release	Comments
E1120	XIQC 10.12.01	Monitor only
E2120	XIQC 10.12.01	Monitor only
E2122	XIQC 10.12.01	Monitor only
E3120	XIQC 10.12.01	Monitor only
E3125	XIQC 10.12.01	Monitor only
VE6120	XIQC 10.12.01	Monitor only
VE6120H	XIQC 10.12.01	Monitor only
VE6120K	XIQC 10.12.01	Monitor only
VE6125	XIQC 10.12.01	Monitor only
VE6125K	XIQC 10.12.01	Monitor only
NX5500	WiNG OS 7.9.5.0	Monitor only
NX7500 Series	WiNG OS 7.9.5.0	Monitor only
NX9500 Series	WiNG OS 7.7.1.9	Monitor only
NX9600 Series	WiNG OS 7.9.5.0	Monitor only
RFS4000 Series	WiNG OS 5.9.7.1	Monitor only
RFS6000 Series	WiNG OS 5.9.1.8	Monitor only

Device Model	Latest Supported Release	Comments
RFS7000 Series	WiNG OS 5.8.6.11	Monitor only
VX9000	WiNG OS 7.9.5.0	Monitor only

Access Points

Access Point information is provided in the following sections:

- [Universal Hardware](#) on page 18
- [IQ Engine \(Cloud Native\)](#) on page 19
- [ExtremeWireless WiNG](#) on page 20
- [Extreme Wireless](#) on page 21

Universal Hardware

Device Model	Latest Supported Release	Comments
AP302W	IQ Engine 10.7.5 WiNG OS 7.9.5.0 AP 10.12.1	Platform support introduced with IQ Engine 10.3.1
AP305C	IQ Engine 10.7.5b WiNG OS 7.9.5.0 AP 10.12.1	Platform support introduced with IQ Engine 10.1.1
AP305C-1	IQ Engine 10.7.5b WiNG OS 7.9.5.0 AP 10.12.1	Platform support introduced with IQ Engine 10.4.6
AP305CX	IQ Engine 10.7.5b WiNG OS 7.9.5.0 AP 10.12.1	Platform support introduced with IQ Engine 10.1.1
AP3000	IQ Engine 10.7.5 AP 10.12.1	Platform support introduced with IQ engine 10.6.1
AP3000X	IQ Engine 10.7.5	Platform support introduced with IQ Engine 10.6.1
AP4000	IQ Engine 10.7.5 AP 10.12.1	Platform support introduced with IQ Engine 10.4.1
AP4000-1	IQ Engine 10.7.5 AP 10.12.1	Platform support introduced with IQ Engine 10.4.2
AP4020	IQ Engine 10.8.1	Platform support introduced with IQ Engine 10.8.1
AP410C	IQ Engine 10.7.5b WiNG OS 7.9.5.0 AP 10.12.1	Platform support introduced with IQ Engine 10.1.2

Device Model	Latest Supported Release	Comments
AP410C-1	IQ Engine 10.7.5 WiNG OS 7.9.5.0 AP 10.12.1	Platform support introduced with IQ Engine 10.4.6
AP460C	IQ Engine 10.7.5b WiNG OS 7.9.5.0 AP 10.12.1	Platform support introduced with IQ Engine 10.1.2
AP460S6C	IQ Engine 10.7.5 WiNG OS 7.9.5.0 AP 10.12.1	Platform support introduced with IQ Engine 10.1.2
AP460S12C	IQ Engine 10.7.5 WiNG OS 7.9.5.0 AP 10.12.1	Platform support introduced with IQ Engine 10.1.2
AP5010	IQ Engine 10.7.5b WiNG OS 7.9.5.0 AP 10.12.1	Platform support introduced with IQ Engine 10.5.1
AP5020	IQ Engine 10.8.1 AP 10.12.1	Platform support introduced with IQ Engine 10.7.2
AP5050U	IQ Engine 10.7.5b AP 10.12.1	Platform support introduced with IQ Engine 10.5.3
AP5050D	IQ Engine 10.7.5b AP 10.12.1	Platform support introduced with IQ Engine 10.5.3
AP510C/CX	IQ Engine 10.7.5b	Platform support introduced with IQ Engine 10.0.8

IQ Engine (Cloud Native)

Device Model	Latest Supported Release	Comments
AP630	IQ Engine 10.7.5	Platform support introduced with IQ Engine 10.0.1. End of Life Information
AP650	IQ Engine 10.7.5	Platform support introduced with IQ Engine 10.0.1. End of Life Information
AP650X	IQ Engine 10.7.5	Platform support introduced with IQ Engine 10.0.1. End of Life Information
AP1130	IQ Engine 10.6.1a	Platform support introduced with IQ Engine 8.2.1. End of Life Information
AP550	IQ Engine 10.6.1a	Platform support introduced with IQ Engine 7.0.3. End of Life Information
AP390	IQ Engine 6.5.16	End of Life Information

Device Model	Latest Supported Release	Comments
AP370	IQ Engine 6.5.16	End of Life Information
AP350	IQ Engine 6.5.16	End of Life Information
AP340	IQ Engine 6.5.10	End of Life Information
AP330	IQ Engine 6.5.16	End of Life Information
AP320	IQ Engine 6.5.10	End of Life Information
AP250	IQ Engine 10.6.1a	Platform support introduced with IQ Engine 7.0.2.
AP245X	IQ Engine 10.6.1a	Platform support introduced with IQ Engine 7.0.2. End of Life Information
AP230	IQ Engine 10.6.1a	Platform support introduced with IQ Engine 8.2.1. End of Life Information
AP170	IQ Engine 6.5.16	End of Life Information
AP150W	IQ Engine 10.6.1a	Platform support introduced with IQ Engine 8.1.1. End of Life Information
AP141	IQ Engine 6.5.16	End of Life Information
AP130	IQ Engine 10.6.1a	Platform support introduced with IQ Engine 8.2.1. End of Life Information
AP122	IQ Engine 10.6.1a	Platform support introduced with IQ Engine 7.0.4.
AP122X	IQ Engine 10.6.1a	Platform support introduced with IQ Engine 8.2.1. End of Life Information
AP121	IQ Engine 6.5.16	End of Life Information
AP120	IQ Engine 6.5.10	End of Life Information
Atom AP30	IQ Engine 10.6.1a	Platform support introduced with IQ Engine 8.3.2. End of Life Information

ExtremeWireless WiNG

Device Model	Latest Supported Release	Comments
AP560i	WiNG OS 7.9.5.0	Monitor only
AP560h	WiNG OS 7.9.5.0	Monitor only
AP505	WiNG OS 7.9.5.0	Monitor only
AP510i	WiNG OS 7.9.5.0	Monitor only
AP510i-1	WiNG OS 7.9.5.0	Monitor only
AP460i/e	WiNG OS 7.9.5.0	Monitor only
AP410i/e	WiNG OS 7.9.5.0	Monitor only
AP410i-1	WiNG OS 7.9.5.0	Monitor only
AP360i/e	WiNG OS 7.9.5.0	Monitor only

Device Model	Latest Supported Release	Comments
AP310i/e	WiNG OS 7.9.5.0	Monitor only
AP310i/e-1	WiNG OS 7.9.5.0	Monitor Only
AP3000	WiNG OS 7.9.5.0	Monitor Only
AP8533	WiNG OS 7.7.1.9	Monitor only
AP8432	WiNG OS 7.7.1.9	Monitor only
AP8232	WiNG OS 5.9.1.8	Monitor only
AP8222	WiNG OS 5.8.6.11	Monitor only
AP8163	WiNG OS 5.9.7.1	Monitor only
AP8132	WiNG OS 5.9.1.8	Monitor only
AP8122	WiNG OS 5.9.1.8	Monitor only
AP7662	WiNG OS 7.7.1.9	Monitor only
AP7632	WiNG OS 7.7.1.9	Monitor only
AP7622	WiNG OS 5.9.7.1	Monitor only
AP7612	WiNG OS 7.7.1.9	Monitor only
AP7602	WiNG OS 5.9.7.1	Monitor only
AP7562	WiNG OS 7.7.1.9	Monitor only
AP7532	WiNG OS 7.7.1.9	Monitor only
AP7522	WiNG OS 7.7.1.9	Monitor only
AP7502	WiNG OS 5.9.7.1	Monitor only
AP7161	WiNG OS 5.9.1.8	Monitor only
AP7131	WiNG OS 5.8.6.11	Monitor only
AP6562	WiNG OS 5.9.1.8	Monitor only
AP6532	WiNG OS 5.9.1.8	Monitor only
AP6522	WiNG OS 5.9.1.8	Monitor only
AP6521	WiNG OS 5.9.1.8	Monitor only
AP6511	WiNG OS 5.8.6.11	Monitor only

Extreme Wireless

Device Model	Latest Supported Release	Comments
AP3965	ExtremeWireless 10.51	Monitor only
AP3935	ExtremeWireless 10.51	Monitor only
AP3917	ExtremeWireless 10.51	Monitor only
AP3916C	ExtremeWireless 10.51	Monitor only
AP3915	ExtremeWireless 10.51	Monitor only

Device Model	Latest Supported Release	Comments
AP3912	ExtremeWireless 10.51	Monitor only
SA201	ExtremeWireless 10.51	Monitor only

Switches

Switch information is provided in the following sections:

- [Universal Hardware](#) on page 23
- [ExtremeXOS](#) on page 38
- [VOSS](#) on page 43
- [IQ Engine \(Cloud Native\)](#) on page 19
- [Dell EMC](#) on page 44

For the latest release notes for Fabric Engine and Switch Engine , see the [Extreme Networks Documentation Site](#).

Universal Hardware

Device Model	Latest Supported Release	Standalone Support	Stack Support
4120-24MW-4Y	Switch Engine 33.2	<ul style="list-style-type: none"> Onboard Monitor Template- and device-level configuration SSH Proxy* Supplemental CLI* <p>Note: Pilot license required to configure advanced features.</p>	<ul style="list-style-type: none"> Onboard Monitor Template- and device-level configuration SSH Proxy* Up to 8 unit stacking 200Gb stacking through two built-in QSFP28 ports <p>Note: Can only stack with other 4120 devices. Cross stacking between 4120 and 4220 is not supported. Cross stacking between 4000 and 5000 is not supported.</p>
4120-48MW-4Y	Switch Engine 33.2	<ul style="list-style-type: none"> Onboard Monitor Template- and device-level configuration SSH Proxy* Supplemental CLI* <p>Note: Pilot license required to configure advanced features.</p>	<ul style="list-style-type: none"> Onboard Monitor Template- and device-level configuration SSH Proxy* Up to 8 unit stacking 200Gb stacking through two built-in QSFP28 ports <p>Note: Can only stack with other 4120 devices. Cross stacking between 4120 and 4220 is not supported. Cross stacking between 4000 and 5000 is not supported.</p>

Device Model	Latest Supported Release	Standalone Support	Stack Support
4120-Series-Stack	Switch Engine 33.2	<ul style="list-style-type: none"> • Onboard • Monitor • Template- and device-level configuration • SSH Proxy* • Supplemental CLI* <p>Note: Pilot license required to configure advanced features.</p>	<ul style="list-style-type: none"> • Onboard • Monitor • Template- and device-level configuration • SSH Proxy* • Up to 8 unit stacking • 200Gb stacking through two built-in QSFP28 ports <p>Note: Can only stack with other 4120 devices. Cross stacking between 4120 and 4220 is not supported. Cross stacking between 4000 and 5000 is not supported.</p>
4220-12P-4X	Switch Engine 33.2	<ul style="list-style-type: none"> • Onboard • Monitor • Template- and device-level configuration • SSH Proxy* • Supplemental CLI* <p>Note: Pilot license required to configure advanced features.</p>	<ul style="list-style-type: none"> • Onboard • Monitor • Template- and device-level configuration • SSH Proxy* • Up to 8 unit stacking • 40Gb stacking through two built-in SFP+ uplink ports <p>Note: Can only stack with other 4220 devices. Cross stacking between 4120 and 4220 is not supported. Cross stacking between 4000 and 5000 is not supported.</p>

Device Model	Latest Supported Release	Standalone Support	Stack Support
4220-12T-4X	Switch Engine 33.2	<ul style="list-style-type: none"> • Onboard • Monitor • Template- and device-level configuration • SSH Proxy* • Supplemental CLI* <p>Note: Pilot license required to configure advanced features.</p>	<ul style="list-style-type: none"> • Onboard • Monitor • Template- and device-level configuration • SSH Proxy* • Up to 8 unit stacking • 40Gb stacking through two built-in SFP+ uplink ports <p>Note: Can only stack with other 4220 devices. Cross stacking between 4120 and 4220 is not supported. Cross stacking between 4000 and 5000 is not supported.</p>
4220-24P-4X	Switch Engine 33.2	<ul style="list-style-type: none"> • Onboard • Monitor • Template- and device-level configuration • SSH Proxy* • Supplemental CLI* <p>Note: Pilot license required to configure advanced features.</p>	<ul style="list-style-type: none"> • Onboard • Monitor • Template- and device-level configuration • SSH Proxy* • Up to 8 unit stacking • 40Gb stacking through two built-in SFP+ uplink ports <p>Note: Can only stack with other 4220 devices. Cross stacking between 4120 and 4220 is not supported. Cross stacking between 4000 and 5000 is not supported.</p>

Device Model	Latest Supported Release	Standalone Support	Stack Support
4220-24T-4X	Switch Engine 33.2	<ul style="list-style-type: none"> • Onboard • Monitor • Template- and device-level configuration • SSH Proxy* • Supplemental CLI* <p>Note: Pilot license required to configure advanced features.</p>	<ul style="list-style-type: none"> • Onboard • Monitor • Template- and device-level configuration • SSH Proxy* • Up to 8 unit stacking • 40Gb stacking through two built-in SFP+ uplink ports <p>Note: Can only stack with other 4220 devices. Cross stacking between 4120 and 4220 is not supported. Cross stacking between 4000 and 5000 is not supported.</p>
4220-48P-4X	Switch Engine 33.2	<ul style="list-style-type: none"> • Onboard • Monitor • Template- and device-level configuration • SSH Proxy* • Supplemental CLI* <p>Note: Pilot license required to configure advanced features.</p>	<ul style="list-style-type: none"> • Onboard • Monitor • Template- and device-level configuration • SSH Proxy* • Up to 8 unit stacking • 40Gb stacking through two built-in SFP+ uplink ports <p>Note: Can only stack with other 4220 devices. Cross stacking between 4120 and 4220 is not supported. Cross stacking between 4000 and 5000 is not supported.</p>

Device Model	Latest Supported Release	Standalone Support	Stack Support
4220-48T-4X	Switch Engine 33.2	<ul style="list-style-type: none"> • Onboard • Monitor • Template- and device-level configuration • SSH Proxy* • Supplemental CLI* <p>Note: Pilot license required to configure advanced features.</p>	<ul style="list-style-type: none"> • Onboard • Monitor • Template- and device-level configuration • SSH Proxy* • Up to 8 unit stacking • 40Gb stacking through two built-in SFP+ uplink ports <p>Note: Can only stack with other 4220 devices. Cross stacking between 4120 and 4220 is not supported. Cross stacking between 4000 and 5000 is not supported.</p>
4220-4MW-20P-4X	Switch Engine 33.2	<ul style="list-style-type: none"> • Onboard • Monitor • Template- and device-level configuration • SSH Proxy* • Supplemental CLI* <p>Note: Pilot license required to configure advanced features.</p>	<ul style="list-style-type: none"> • Onboard • Monitor • Template- and device-level configuration • SSH Proxy* • Up to 8 unit stacking • 40Gb stacking through two built-in SFP+ uplink ports <p>Note: Can only stack with other 4220 devices. Cross stacking between 4120 and 4220 is not supported. Cross stacking between 4000 and 5000 is not supported.</p>

Device Model	Latest Supported Release	Standalone Support	Stack Support
4220-4MW-8P-4X	Switch Engine 33.2	<ul style="list-style-type: none"> • Onboard • Monitor • Template- and device-level configuration • SSH Proxy* • Supplemental CLI* <p>Note: Pilot license required to configure advanced features.</p>	<ul style="list-style-type: none"> • Onboard • Monitor • Template- and device-level configuration • SSH Proxy* • Up to 8 unit stacking • 40Gb stacking through two built-in SFP+ uplink ports <p>Note: Can only stack with other 4220 devices. Cross stacking between 4120 and 4220 is not supported. Cross stacking between 4000 and 5000 is not supported.</p>
4220-8MW-40P-4X	Switch Engine 33.2	<ul style="list-style-type: none"> • Onboard • Monitor • Template- and device-level configuration • SSH Proxy* • Supplemental CLI* <p>Note: Pilot license required to configure advanced features.</p>	<ul style="list-style-type: none"> • Onboard • Monitor • Template- and device-level configuration • SSH Proxy* • Up to 8 unit stacking • 40Gb stacking through two built-in SFP+ uplink ports <p>Note: Can only stack with other 4220 devices. Cross stacking between 4120 and 4220 is not supported. Cross stacking between 4000 and 5000 is not supported.</p>

Device Model	Latest Supported Release	Standalone Support	Stack Support
4220-8X	Switch Engine 33.2	<ul style="list-style-type: none"> • Onboard • Monitor • Template- and device-level configuration • SSH Proxy* • Supplemental CLI* <p>Note: Pilot license required to configure advanced features.</p>	<ul style="list-style-type: none"> • Onboard • Monitor • Template- and device-level configuration • SSH Proxy* • Up to 8 unit stacking • 40Gb stacking through two built-in SFP+ uplink ports <p>Note: Can only stack with other 4220 devices. Cross stacking between 4120 and 4220 is not supported. Cross stacking between 4000 and 5000 is not supported.</p>
4220-Series-Stack	Switch Engine 33.2	<ul style="list-style-type: none"> • Onboard • Monitor • Template- and device-level configuration • SSH Proxy* • Supplemental CLI* <p>Note: Pilot license required to configure advanced features.</p>	<ul style="list-style-type: none"> • Onboard • Monitor • Template- and device-level configuration • SSH Proxy* • Up to 8 unit stacking • 40Gb stacking through two built-in SFP+ uplink ports <p>Note: Can only stack with other 4220 devices. Cross stacking between 4120 and 4220 is not supported. Cross stacking between 4000 and 5000 is not supported.</p>

Device Model	Latest Supported Release	Standalone Support	Stack Support
5320-16P-4XE	Switch Engine 33.2 Fabric Engine 9.1.0.1	<ul style="list-style-type: none"> • Monitor • Template- and device-level configuration • SSH Proxy* • Supplemental CLI* 	<p>Switch Engine:</p> <ul style="list-style-type: none"> • Monitor • Template- and device-level configuration • SSH Proxy <p>Note: Cross stacking between 4000 and 5000 is not supported.</p>
5320-16P-4XE-DC	Switch Engine 33.2 Fabric Engine 9.1.0.1	<ul style="list-style-type: none"> • Monitor • Template- and device-level configuration • SSH Proxy* • Supplemental CLI* 	<p>Switch Engine:</p> <ul style="list-style-type: none"> • Monitor • Template- and device-level configuration • SSH Proxy <p>Note: Cross stacking between 4000 and 5000 is not supported.</p>
5320-24T-8XE	Switch Engine 33.2 Fabric Engine 9.1.0.1	<ul style="list-style-type: none"> • Monitor • Template- and device-level configuration • SSH Proxy* • Supplemental CLI* 	<ul style="list-style-type: none"> • Monitor • Template- and device-level configuration • SSH Proxy <p>Note: Cross stacking between 4000 and 5000 is not supported.</p>
5320-24P-8XE	Switch Engine 33.2 Fabric Engine 9.1.0.1	<ul style="list-style-type: none"> • Monitor • Template- and device-level configuration • SSH Proxy* • Supplemental CLI* 	<ul style="list-style-type: none"> • Monitor • Template- and device-level configuration • SSH Proxy <p>Note: Cross stacking between 4000 and 5000 is not supported.</p>
5320-48T-8XE	Switch Engine 33.2 Fabric Engine 9.1.0.1	<ul style="list-style-type: none"> • Monitor • Template- and device-level configuration • SSH Proxy* • Supplemental CLI* 	<ul style="list-style-type: none"> • Monitor • Template- and device-level configuration • SSH Proxy <p>Note: Cross stacking between 4000 and 5000 is not supported.</p>

Device Model	Latest Supported Release	Standalone Support	Stack Support
5320-48P-8XE	Switch Engine 33.2 Fabric Engine 9.1.0.1	<ul style="list-style-type: none"> • Monitor • Template- and device-level configuration • SSH Proxy* • Supplemental CLI* 	<ul style="list-style-type: none"> • Monitor • Template- and device-level configuration • SSH Proxy <p>Note: Cross stacking between 4000 and 5000 is not supported.</p>
5420F-24T-4XE	Switch Engine 33.2 Fabric Engine 9.1.0.1	<ul style="list-style-type: none"> • Monitor • Template- and device-level configuration • SSH Proxy* • Supplemental CLI* 	<ul style="list-style-type: none"> • Monitor • Template- and device-level configuration • SSH Proxy <p>Note: Cross stacking between 4000 and 5000 is not supported.</p>
5420F-24P-4XE	Switch Engine 33.2 Fabric Engine 9.1.0.1	<ul style="list-style-type: none"> • Monitor • Template- and device-level configuration • SSH Proxy* • Supplemental CLI* 	<ul style="list-style-type: none"> • Monitor • Template- and device-level configuration • SSH Proxy <p>Note: Cross stacking between 4000 and 5000 is not supported.</p>
5420F-24S-4XE	Switch Engine 33.2 Fabric Engine 9.1.0.1	<ul style="list-style-type: none"> • Monitor • Template- and device-level configuration • SSH Proxy* • Supplemental CLI* 	<ul style="list-style-type: none"> • Monitor • Template- and device-level configuration • SSH Proxy <p>Note: Cross stacking between 4000 and 5000 is not supported.</p>
5420F-48T-4XE	Switch Engine 33.2 Fabric Engine 9.1.0.1	<ul style="list-style-type: none"> • Monitor • Template- and device-level configuration • SSH Proxy* • Supplemental CLI* 	<ul style="list-style-type: none"> • Monitor • Template- and device-level configuration • SSH Proxy <p>Note: Cross stacking between 4000 and 5000 is not supported.</p>

Device Model	Latest Supported Release	Standalone Support	Stack Support
5420F-48P-4XE	Switch Engine 33.2 Fabric Engine 9.1.0.1	<ul style="list-style-type: none"> • Monitor • Template- and device-level configuration • SSH Proxy* • Supplemental CLI* 	<ul style="list-style-type: none"> • Monitor • Template- and device-level configuration • SSH Proxy <p>Note: Cross stacking between 4000 and 5000 is not supported.</p>
5420F-48P-4XL	Switch Engine 33.2 Fabric Engine 9.1.0.1	<ul style="list-style-type: none"> • Monitor • Template- and device-level configuration • SSH Proxy* • Supplemental CLI* 	<ul style="list-style-type: none"> • Monitor • Template- and device-level configuration • SSH Proxy
5420F-8W-16P-4XE	Switch Engine 33.2 Fabric Engine 9.1.0.1	<ul style="list-style-type: none"> • Monitor • Template- and device-level configuration • SSH Proxy* • Supplemental CLI* 	<ul style="list-style-type: none"> • Monitor • Template- and device-level configuration • SSH Proxy <p>Note: Cross stacking between 4000 and 5000 is not supported.</p>
5420F-16W-32P-4XE	Switch Engine 33.2 Fabric Engine 9.1.0.1	<ul style="list-style-type: none"> • Monitor • Template- and device-level configuration • SSH Proxy* • Supplemental CLI* 	<ul style="list-style-type: none"> • Monitor • Template- and device-level configuration • SSH Proxy <p>Note: Cross stacking between 4000 and 5000 is not supported.</p>
5420F-16MW-32P-4XE	Switch Engine 33.2 Fabric Engine 9.1.0.1	<ul style="list-style-type: none"> • Monitor • Template- and device-level configuration • SSH Proxy* • Supplemental CLI* 	<ul style="list-style-type: none"> • Monitor • Template- and device-level configuration • SSH Proxy <p>Note: Cross stacking between 4000 and 5000 is not supported.</p>

Device Model	Latest Supported Release	Standalone Support	Stack Support
5420M-24T-4YE	Switch Engine 33.2 Fabric Engine 9.1.0.1	<ul style="list-style-type: none"> Monitor Template- and device-level configuration SSH Proxy* Supplemental CLI* 	<ul style="list-style-type: none"> Monitor Template- and device-level configuration SSH Proxy <p>Note: Cross stacking between 4000 and 5000 is not supported.</p>
5420M-24W-4YE	Switch Engine 33.2 Fabric Engine 9.1.0.1	<ul style="list-style-type: none"> Monitor Template- and device-level configuration SSH Proxy* Supplemental CLI* 	<ul style="list-style-type: none"> Monitor Template- and device-level configuration SSH Proxy <p>Note: Cross stacking between 4000 and 5000 is not supported.</p>
5420M-48T-4YE	Switch Engine 33.2 Fabric Engine 9.1.0.1	<ul style="list-style-type: none"> Monitor Template- and device-level configuration SSH Proxy* Supplemental CLI* 	<ul style="list-style-type: none"> Monitor Template- and device-level configuration SSH Proxy <p>Note: Cross stacking between 4000 and 5000 is not supported.</p>
5420M-48W-4YE	Switch Engine 33.2 Fabric Engine 9.1.0.1	<ul style="list-style-type: none"> Monitor Template- and device-level configuration SSH Proxy* Supplemental CLI* 	<ul style="list-style-type: none"> Monitor Template- and device-level configuration SSH Proxy <p>Note: Cross stacking between 4000 and 5000 is not supported.</p>
5420M-16MW-32P-4YE	Switch Engine 33.2 Fabric Engine 9.1.0.1	<ul style="list-style-type: none"> Monitor Template- and device-level configuration SSH Proxy* Supplemental CLI* 	<ul style="list-style-type: none"> Monitor Template- and device-level configuration SSH Proxy <p>Note: Cross stacking between 4000 and 5000 is not supported.</p>

Device Model	Latest Supported Release	Standalone Support	Stack Support
5520-24W	Switch Engine 33.2 Fabric Engine 9.1.0.1	<ul style="list-style-type: none"> • Monitor • Template- and device-level configuration • SSH Proxy* • Supplemental CLI* 	<ul style="list-style-type: none"> • Monitor • Template- and device-level configuration • SSH Proxy <p>Note: Cross stacking between 4000 and 5000 is not supported.</p>
5520-24T	Switch Engine 33.2 Fabric Engine 9.1.0.1	<ul style="list-style-type: none"> • Monitor • Template- and device-level configuration • SSH Proxy* • Supplemental CLI* 	<ul style="list-style-type: none"> • Monitor • Template- and device-level configuration • SSH Proxy <p>Note: Cross stacking between 4000 and 5000 is not supported.</p>
5520-24T-ACDC	Switch Engine 33.2 Fabric Engine 9.1.0.1	<ul style="list-style-type: none"> • Monitor • Template- and device-level configuration • SSH Proxy* • Supplemental CLI* 	<p>Switch Engine:</p> <ul style="list-style-type: none"> • Monitor • Template- and device-level configuration • SSH Proxy <p>Note: Cross stacking between 4000 and 5000 is not supported.</p>
5520-24X-ACDC	Switch Engine 33.2 Fabric Engine 9.1.0.1	<ul style="list-style-type: none"> • Monitor • Template- and device-level configuration • SSH Proxy* • Supplemental CLI* 	<p>Switch Engine:</p> <ul style="list-style-type: none"> • Monitor • Template- and device-level configuration • SSH Proxy <p>Note: Cross stacking between 4000 and 5000 is not supported.</p>
5520-48W	Switch Engine 33.2 Fabric Engine 9.1.0.1	<ul style="list-style-type: none"> • Monitor • Template- and device-level configuration • SSH Proxy* • Supplemental CLI* 	<ul style="list-style-type: none"> • Monitor • Template- and device-level configuration • SSH Proxy <p>Note: Cross stacking between 4000 and 5000 is not supported.</p>

Device Model	Latest Supported Release	Standalone Support	Stack Support
5520-48T	Switch Engine 33.2 Fabric Engine 9.1.0.1	<ul style="list-style-type: none"> • Monitor • Template- and device-level configuration • SSH Proxy* • Supplemental CLI* 	<ul style="list-style-type: none"> • Monitor • Template- and device-level configuration • SSH Proxy <p>Note: Cross stacking between 4000 and 5000 is not supported.</p>
5520-48T-ACDC	Switch Engine 33.2 Fabric Engine 9.1.0.1	<ul style="list-style-type: none"> • Monitor • Template- and device-level configuration • SSH Proxy* • Supplemental CLI* 	<ul style="list-style-type: none"> • Monitor • Template- and device-level configuration • SSH Proxy <p>Note: Cross stacking between 4000 and 5000 is not supported.</p>
5520-12MW-36W	Switch Engine 33.2 Fabric Engine 9.1.0.1	<ul style="list-style-type: none"> • Monitor • Template- and device-level configuration • SSH Proxy* • Supplemental CLI* 	<ul style="list-style-type: none"> • Monitor • Template- and device-level configuration • SSH Proxy <p>Note: Cross stacking between 4000 and 5000 is not supported.</p>
5520-48SE	Switch Engine 33.2 Fabric Engine 9.1.0.1	<ul style="list-style-type: none"> • Monitor • Template- and device-level configuration • SSH Proxy* • Supplemental CLI* 	<ul style="list-style-type: none"> • Monitor • Template- and device-level configuration • SSH Proxy <p>Note: Cross stacking between 4000 and 5000 is not supported.</p>
5520-48SE-ACDC	Switch Engine 33.2 Fabric Engine 9.1.0.1	<ul style="list-style-type: none"> • Monitor • Template- and device-level configuration • SSH Proxy* • Supplemental CLI* 	<ul style="list-style-type: none"> • Monitor • Template- and device-level configuration • SSH Proxy <p>Note: Cross stacking between 4000 and 5000 is not supported.</p>

Device Model	Latest Supported Release	Standalone Support	Stack Support
5520-24X	Switch Engine 33.2 Fabric Engine 9.1.0.1	<ul style="list-style-type: none"> • Monitor • Template- and device-level configuration • SSH Proxy* • Supplemental CLI* 	<p>Switch Engine:</p> <ul style="list-style-type: none"> • Monitor • Template- and device-level configuration • SSH Proxy <p>Note: Cross stacking between 4000 and 5000 is not supported.</p>
5720-24MW	Switch Engine 33.2 Fabric Engine 9.1.0.1	<ul style="list-style-type: none"> • Monitor • Template- and device-level configuration • SSH Proxy* • Supplemental CLI* 	<p>Switch Engine:</p> <ul style="list-style-type: none"> • Monitor • Template- and device-level configuration • SSH Proxy <p>Note: Cross stacking between 4000 and 5000 is not supported.</p>
5720-48MW	Switch Engine 33.2 Fabric Engine 9.1.0.1	<ul style="list-style-type: none"> • Monitor • Template- and device-level configuration • SSH Proxy* • Supplemental CLI* 	<p>Switch Engine:</p> <ul style="list-style-type: none"> • Monitor • Template- and device-level configuration • SSH Proxy <p>Note: Cross stacking between 4000 and 5000 is not supported.</p>
5720-24MXW	Switch Engine 33.2 Fabric Engine 9.1.0.1	<ul style="list-style-type: none"> • Monitor • Template- and device-level configuration • SSH Proxy* • Supplemental CLI* 	<p>Switch Engine:</p> <ul style="list-style-type: none"> • Monitor • Template- and device-level configuration • SSH Proxy <p>Note: Cross stacking between 4000 and 5000 is not supported.</p>

Device Model	Latest Supported Release	Standalone Support	Stack Support
5720-48MXW	Switch Engine 33.2 Fabric Engine 9.1.0.1	<ul style="list-style-type: none"> Monitor Template- and device-level configuration SSH Proxy* Supplemental CLI* 	<p>Switch Engine:</p> <ul style="list-style-type: none"> Monitor Template- and device-level configuration SSH Proxy <p>Note: Cross stacking between 4000 and 5000 is not supported.</p>
7520-48Y	Switch Engine 33.2 Fabric Engine 9.1.0.1	<p>Switch Engine:</p> <ul style="list-style-type: none"> Monitor Template- and device-level configuration SSH Proxy* Supplemental CLI* <p>Fabric Engine: Monitor</p>	<p>Switch Engine:</p> <ul style="list-style-type: none"> Monitor Template- and device-level configuration SSH Proxy <p>Note: Cross stacking between 4000 and 5000 is not supported.</p>
7520-48YE	Switch Engine 33.2 Fabric Engine 9.1.0.1	<p>Switch Engine:</p> <ul style="list-style-type: none"> Monitor Template- and device-level configuration SSH Proxy* Supplemental CLI* <p>Fabric Engine: Monitor</p>	<p>Switch Engine:</p> <ul style="list-style-type: none"> Monitor Template- and device-level configuration SSH Proxy <p>Note: Cross stacking between 4000 and 5000 is not supported.</p>

Device Model	Latest Supported Release	Standalone Support	Stack Support
7520-48XT	Switch Engine 33.2 Fabric Engine 9.1.0.1	Switch Engine: <ul style="list-style-type: none"> Monitor Template- and device-level configuration SSH Proxy* Supplemental CLI* Fabric Engine: Monitor	Switch Engine: <ul style="list-style-type: none"> Monitor Template- and device-level configuration SSH Proxy Note: Cross stacking between 4000 and 5000 is not supported.
7720-32c	Switch Engine 33.2 Fabric Engine 9.1.0.1	Switch Engine: <ul style="list-style-type: none"> Monitor Template- and device-level configuration SSH Proxy* Supplemental CLI* Fabric Engine: Monitor	Switch Engine: <ul style="list-style-type: none"> Monitor Template- and device-level configuration SSH Proxy Note: Cross stacking between 4000 and 5000 is not supported.



Note

* SSH Proxy and Supplemental CLI can be used for configuring additional parameters not currently available within template or device-level configurations.

ExtremeXOS

Device Model	Latest Supported Release	Standalone Support	Stack Support
X435-8P-2T-W	ExtremeXOS 33.2	<ul style="list-style-type: none"> Monitor Template- and device-level configuration SSH Proxy* Supplemental CLI* 	N/A
X435-24T-4S	ExtremeXOS 33.2	<ul style="list-style-type: none"> Monitor Template- and device-level configuration SSH Proxy* Supplemental CLI* 	N/A

Device Model	Latest Supported Release	Standalone Support	Stack Support
X435-24P-4S	ExtremeXOS 33.2	<ul style="list-style-type: none"> • Monitor • Template- and device-level configuration • SSH Proxy* • Supplemental CLI* 	N/A
X435-8T-4S	ExtremeXOS 33.2	<ul style="list-style-type: none"> • Monitor • Template- and device-level configuration • SSH Proxy* • Supplemental CLI* 	N/A
X435-8P-4S	ExtremeXOS 33.2	<ul style="list-style-type: none"> • Monitor • Template- and device-level configuration • SSH Proxy* • Supplemental CLI* 	N/A
X440-G2-12p-10GE4	ExtremeXOS 33.2	<ul style="list-style-type: none"> • Monitor • Template- and device-level configuration • SSH Proxy* • Supplemental CLI* 	<ul style="list-style-type: none"> • Monitor • Template- and device-level configuration • SSH Proxy* • Supplemental CLI*
X440-G2-12t-10GE4	ExtremeXOS 33.2	<ul style="list-style-type: none"> • Monitor • Template- and device-level configuration • SSH Proxy* • Supplemental CLI* 	<ul style="list-style-type: none"> • Monitor • Template- and device-level configuration • SSH Proxy* • Supplemental CLI*
X440-G2-24p-10GE4	ExtremeXOS 33.2	<ul style="list-style-type: none"> • Monitor • Template- and device-level configuration • SSH Proxy* • Supplemental CLI* 	<ul style="list-style-type: none"> • Monitor • Template- and device-level configuration • SSH Proxy* • Supplemental CLI*
X440-G2-24t-10GE4	ExtremeXOS 33.2	<ul style="list-style-type: none"> • Monitor • Template- and device-level configuration • SSH Proxy* • Supplemental CLI* 	<ul style="list-style-type: none"> • Monitor • Template- and device-level configuration • SSH Proxy* • Supplemental CLI*

Device Model	Latest Supported Release	Standalone Support	Stack Support
X440-G2-48p-10GE4	ExtremeXOS 33.2	<ul style="list-style-type: none"> • Monitor • Template- and device-level configuration • SSH Proxy* • Supplemental CLI* 	<ul style="list-style-type: none"> • Monitor • Template- and device-level configuration • SSH Proxy* • Supplemental CLI*
X440-G2-48t-10GE4	ExtremeXOS 33.2	<ul style="list-style-type: none"> • Monitor • Template- and device-level configuration • SSH Proxy* • Supplemental CLI* 	<ul style="list-style-type: none"> • Monitor • Template- and device-level configuration • SSH Proxy* • Supplemental CLI*
X450-G2-24p-GE4	ExtremeXOS 33.2	<ul style="list-style-type: none"> • Monitor • Template- and device-level configuration • SSH Proxy* • Supplemental CLI* 	Monitor
X450-G2-24p-10GE4	ExtremeXOS 33.2	<ul style="list-style-type: none"> • Monitor • Template- and device-level configuration • SSH Proxy* • Supplemental CLI* 	Monitor
X450-G2-48p-10GE4	ExtremeXOS 33.2	<ul style="list-style-type: none"> • Monitor • Template- and device-level configuration • SSH Proxy* • Supplemental CLI* 	Monitor
X460-G2-16mp-32p-10GE4	ExtremeXOS 33.2	<ul style="list-style-type: none"> • Monitor • Template- and device-level configuration • SSH Proxy* • S 	Monitor
X460-G2-24p-10GE4	ExtremeXOS 33.2	<ul style="list-style-type: none"> • Monitor • Template- and device-level configuration • SSH Proxy* • Supplemental CLI* 	Monitor

Device Model	Latest Supported Release	Standalone Support	Stack Support
X460-G2-24p-GE4	ExtremeXOS 33.2	<ul style="list-style-type: none"> • Monitor • Template- and device-level configuration • SSH Proxy* • S 	Monitor
X460-G2-24p-24hp-10GE4	ExtremeXOS 33.2	<ul style="list-style-type: none"> • Monitor • Template- and device-level configuration • SSH Proxy* • Supplemental CLI* 	Monitor
X460-G2-24t-10GE4	ExtremeXOS 33.2	<ul style="list-style-type: none"> • Monitor • Template- and device-level configuration • SSH Proxy* • Supplemental CLI* 	Monitor
X460-G2-24t-GE4	ExtremeXOS 33.2	<ul style="list-style-type: none"> • Monitor • Template- and device-level configuration • SSH Proxy* • Supplemental CLI* 	Monitor
X460-G2-24t-24ht-10GE4	ExtremeXOS 33.2	<ul style="list-style-type: none"> • Monitor • Template- and device-level configuration • SSH Proxy* • Supplemental CLI* 	Monitor
X460-G2-24x-10GE4	ExtremeXOS 33.2	<ul style="list-style-type: none"> • Monitor • Template- and device-level configuration • SSH Proxy* • Supplemental CLI* 	Monitor
X460-G2-48p-10GE4	ExtremeXOS 33.2	<ul style="list-style-type: none"> • Monitor • Template- and device-level configuration • SSH Proxy* • Supplemental CLI* 	Monitor
X460-G2-48t-10GE4	ExtremeXOS 33.2	<ul style="list-style-type: none"> • Monitor • Template- and device-level configuration • SSH Proxy* • Supplemental CLI* 	Monitor

Device Model	Latest Supported Release	Standalone Support	Stack Support
X460-G2-48t-GE4	ExtremeXOS 33.2	<ul style="list-style-type: none"> • Monitor • Template- and device-level configuration • SSH Proxy* • Supplemental CLI* 	Monitor
X460-G2-48x-10GE4	ExtremeXOS 33.2	<ul style="list-style-type: none"> • Monitor • Template- and device-level configuration • SSH Proxy* • Supplemental CLI* 	Monitor
X465-24W	ExtremeXOS 33.2	<ul style="list-style-type: none"> • Monitor • Template- and device-level configuration • SSH Proxy* • Supplemental CLI* 	Monitor
X465-48W	ExtremeXOS 33.2	<ul style="list-style-type: none"> • Monitor • Template- and device-level configuration • SSH Proxy* • Supplemental CLI* 	Monitor
X465-24MU	ExtremeXOS 33.2	<ul style="list-style-type: none"> • Monitor • Template- and device-level configuration • SSH Proxy* • Supplemental CLI* 	Monitor
X465-48P	ExtremeXOS 33.2	<ul style="list-style-type: none"> • Monitor • Template- and device-level configuration • SSH Proxy* • Supplemental CLI* 	Monitor
X465-24MU-24W	ExtremeXOS 33.2	<ul style="list-style-type: none"> • Monitor • Template- and device-level configuration • SSH Proxy* • Supplemental CLI* 	Monitor



Note

* SSH Proxy and Supplemental CLI can be used for configuring additional parameters not currently available within template or device-level configurations.

VOSS

Device Model	Latest Supported Release	Standalone Support	Stack Support
VSP7432CQ	VOSS 9.1.0.1	<ul style="list-style-type: none"> • Monitor • Template- and device-level configuration • SSH Proxy* • Supplemental CLI* 	Not supported
VSP7400-48Y	VOSS 9.1.0.1	<ul style="list-style-type: none"> • Monitor • Template- and device-level configuration • SSH Proxy* • Supplemental CLI* 	Not supported
VSP4900-48P	VOSS 9.1.0.1	<ul style="list-style-type: none"> • Monitor • Template- and device-level configuration • SSH Proxy* • Supplemental CLI* 	Not supported
VSP4900-24XE	VOSS 9.1.0.1	<ul style="list-style-type: none"> • Monitor • Template- and device-level configuration • SSH Proxy* • Supplemental CLI* 	Not supported
VSP4900-24S	VOSS 9.1.0.1	<ul style="list-style-type: none"> • Monitor • Template- and device-level configuration • SSH Proxy* • Supplemental CLI* 	Not supported
VSP4900-12MXU-12XE	VOSS 9.1.0.1	<ul style="list-style-type: none"> • Monitor • Template- and device-level configuration • SSH Proxy* • Supplemental CLI* 	Not supported

Device Model	Latest Supported Release	Standalone Support	Stack Support
XA1480	VOSS 8.10	<ul style="list-style-type: none"> • Monitor • Template- and device-level configuration • SSH Proxy* • Supplemental CLI* 	Not supported
XA1440	VOSS 8.10	<ul style="list-style-type: none"> • Monitor • Template- and device-level configuration • SSH Proxy* • Supplemental CLI* 	Not supported

**Note**

* SSH Proxy and Supplemental CLI can be used for configuring additional parameters not currently available within template or device-level configurations.

Dell EMC

Device Model	Latest Supported Release
N3132PX	IQAgent 1.1.29
N3024EF	IQAgent 1.1.29
N3024EP	IQAgent 1.1.29
N3024ET	IQAgent 1.1.29
N3048EP	IQAgent 1.1.29
N3048ET	IQAgent 1.1.29
N3024	IQAgent 1.1.29
N3024F	IQAgent 1.1.29
N3024P	IQAgent 1.1.29
N3048	IQAgent 1.1.29
N3048P	IQAgent 1.1.29
N2128PX	IQAgent 1.1.29
N2024	IQAgent 1.1.29
N2024P	IQAgent 1.1.29
N2048	IQAgent 1.1.29
N2048P	IQAgent 1.1.29
N1524	IQAgent 1.1.29
N1524P	IQAgent 1.1.29

Device Model	Latest Supported Release
N1548	IQAgent 1.1.29
N1548P	IQAgent 1.1.29
N1108T-ON	IQAgent 1.1.29
N1108P-ON	IQAgent 1.1.29
N1124T-ON	IQAgent 1.1.29
N1124P-ON	IQAgent 1.1.29
N1148T-ON	IQAgent 1.1.29
N1148P-ON	IQAgent 1.1.29

Routers

Device Model	Latest Supported Release	Standalone Support
BR200WP End of Life	IQ Engine 6.9.7	
XR200P	IQ Engine 6.9.7	Platform support introduced with IQ Engine 6.9.2
XR600	IQ Engine 10.0.11	Platform support introduced with IQ Engine 9.0.1
XR600P	IQ Engine 10.0.11	Platform support introduced with IQ Engine 9.0.1
VGVA	IQ Engine 6.9.7	

ExtremeCloud IQ Site Engine

ExtremeCloud IQ Site Engine Version	Supported Features
24.2.12	<ul style="list-style-type: none"> • License allocation • Device Assignment to the ExtremeCloud IQ Location • Device Statistics • Port Statistics • Unmanage/Manage device • Device Group to CCG mapping • Open Site Engine without SSO • Stack members • NAC details update for wireless end-systems • Wired end-systems reported to ExtremeCloud IQ
24.2.13	<ul style="list-style-type: none"> • License allocation • Device Assignment to the ExtremeCloud IQ Location • Device Statistics • Port Statistics • Unmanage/Manage device • Device Group to CCG mapping • Open Site Engine without SSO • Stack members • NAC details update for wireless end-systems • Wired end-systems reported to ExtremeCloud IQ
24.02.14	<ul style="list-style-type: none"> • License allocation • Device Assignment to the ExtremeCloud IQ Location • Device Statistics • Port Statistics • Unmanage/Manage device • Device Group to CCG mapping • Open Site Engine with SSO • Stack members • NAC details update for wireless end-systems • Wired end-systems reported to ExtremeCloud IQ
24.02.15	<ul style="list-style-type: none"> • License allocation • Device Assignment to the ExtremeCloud IQ Location • Device Statistics • Port Statistics • Unmanage/Manage device • Device Group to CCG mapping • Open Site Engine with SSO • Stack members • NAC details update for wireless end-systems • Wired end-systems reported to ExtremeCloud IQ

ExtremeCloud IQ Site Engine Version	Supported Features
24.07.10	<ul style="list-style-type: none"> • License allocation • Device Assignment to the ExtremeCloud IQ Location • Device Statistics • Port Statistics • Unmanage/Manage device • Device Group to CCG mapping • Open Site Engine with SSO • Stack members • NAC details update for wireless end-systems • Wired end-systems reported to ExtremeCloud IQ
24.07.11	<ul style="list-style-type: none"> • License allocation • Device Assignment to the ExtremeCloud IQ Location • Device Statistics • Port Statistics • Unmanage/Manage device • Device Group to CCG mapping • Open Site Engine with SSO • Stack members • NAC details update for wireless end-systems • Wired end-systems reported to ExtremeCloud IQ
24.10.10	<ul style="list-style-type: none"> • License allocation • Device Assignment to the ExtremeCloud IQ Location • Device Statistics • Port Statistics • Unmanage/Manage device • Device Group to CCG mapping • Open Site Engine with SSO • Stack members • NAC details update for wireless end-systems • Wired end-systems reported to ExtremeCloud IQ
24.10.11	<ul style="list-style-type: none"> • License allocation • Device Assignment to the ExtremeCloud IQ • Device Statistics • Port Statistics • Unmanage/Manage device • Device Group to CCG mapping • Open Site Engine with SSO • Stack members • NAC details update for wireless end-systems • Wired end-systems reported to ExtremeCloud IQ

ExtremeCloud IQ Site Engine Version	Supported Features
24.10.12	<ul style="list-style-type: none"> • License allocation • Device Assignment to the ExtremeCloud IQ • Device Statistics • Port Statistics • Unmanage/Manage device • Device Group to CCG mapping • Open Site Engine with SSO • Stack members • NAC details update for wireless end-systems • Wired end-systems reported to ExtremeCloud IQ
24.10.13	<ul style="list-style-type: none"> • License allocation • Device Assignment to the ExtremeCloud IQ • Device Statistics • Port Statistics • Unmanage/Manage device • Device Group to CCG mapping • Open Site Engine with SSO • Stack members • NAC details update for wireless end-systems • Wired end-systems reported to ExtremeCloud IQ
25.2.10	<ul style="list-style-type: none"> • License allocation • Device Assignment to the ExtremeCloud IQ • Device Statistics • Port Statistics • Unmanage/Manage device • Device Group to CCG mapping • Open Site Engine with SSO • Stack members • NAC details update for wireless end-systems • Wired end-systems reported to ExtremeCloud IQ • Detect and report orphaned devices • Compatible with Extreme Platform ONE subscriptions
25.2.11	<ul style="list-style-type: none"> • License allocation • Device Assignment to the ExtremeCloud IQ • Device Statistics • Port Statistics • Unmanage/Manage device • Device Group to CCG mapping • Open Site Engine with SSO • Stack members • NAC details update for wireless end-systems • Wired end-systems reported to ExtremeCloud IQ • Detect and report orphaned devices • Compatible with Extreme Platform ONE subscriptions

ExtremeCloud IQ CoPilot

ExtremeCloud IQ CoPilot Feature	Minimum Firmware				
	IQ Engine	Switch Engine	Fabric Engine	Extreme XOS	VOSS
Wi-Fi Efficiency	10.5.2	—	—	—	—
Wi-Fi Capacity	10.5.2	—	—	—	—
PoE Stability	10.5.2	32.1	8.6	32.1	8.6
Port Efficiency	10.5.2	31.7	8.6	31.7	8.6
DFS Recurrence	10.5.2	—	—	—	—
Adverse Traffic Patterns	10.5.2	31.7	8.6	31.7	8.6
Wireless Connectivity Experience	10.5.2	—	—	—	—
Wired Connectivity Experience	—	31.7	8.6	31.7	8.6
Hardware Health	10.5.2	—	—	—	—
Missing VLAN Detection *	10.7.4	—	—	—	—

* Supported on AP3000/AP3000X/AP5010/AP5050U/AP5050D

ExtremeCloud A3

ExtremeCloud A3 Version	Supported Features
5.0.1-4	<ul style="list-style-type: none"> • Licensing • Status Monitoring • SSO • Client Details

Supported Browsers and Display Settings

Desktop and Mobile Browser Support



Note

ExtremeCloud IQ does not support 32-bit browsers.

Table 5: Desktop Browsers

Desktop Browsers	Version Supported
Chrome	v116
Edge	v115
Firefox	v115

Table 5: Desktop Browsers (continued)

Desktop Browsers	Version Supported
Internet Explorer	Not supported
Opera	v60
Safari	v13

Table 6: Mobile Browsers

Mobile Browsers	Version Supported
Android Webview	v73
Chrome for Android	v116
Edge	v79
Firefox for Android	v67
Opera for Android	v52
Safari for iOS	v13
Samsung Internet	Not supported

Display Settings

ExtremeCloud IQ supports display resolutions of 1280 x 1024 or higher.