



# ExtremeCloud IQ (Classic) v25.4.3-40 Release Notes

Enhancements, Fixes, and Supported Devices

9039372-03 Rev AA  
August 2025



Copyright © 2025 Extreme Networks, Inc. All rights reserved.

## Legal Notice

Extreme Networks, Inc. reserves the right to make changes in specifications and other information contained in this document and its website without prior notice. The reader should in all cases consult representatives of Extreme Networks to determine whether any such changes have been made.

The hardware, firmware, software or any specifications described or referred to in this document are subject to change without notice.

## Trademarks

Extreme Networks and the Extreme Networks logo are trademarks or registered trademarks of Extreme Networks, Inc. in the United States and/or other countries.

All other names (including any product names) mentioned in this document are the property of their respective owners and may be trademarks or registered trademarks of their respective companies/owners.

For additional information on Extreme Networks trademarks, see: <https://www.extremenetworks.com/about-extreme-networks/company/legal/trademarks>

## Open Source Declarations

Some software files have been licensed under certain open source or third-party licenses.

End-user license agreements and open source declarations can be found at: <https://www.extremenetworks.com/support/policies/open-source-declaration/>



# Table of Contents

---

Abstract.....	iv
Help and Support.....	v
<b>General Release Information.....</b>	<b>6</b>
Current Release: 25.4.3-40.....	6
Release: 25.4.3-40 New Features.....	6
Release: 25.4.3-40 Addressed Issues.....	6
Release: 25.4.22-3 New Features.....	6
Release: 25.4.22-3 Addressed Issues.....	7
Release: 25.4.21-5 New Features.....	7
Release: 25.4.21-5 Addressed Issues.....	7
ExtremeCloud IQ Public IP Address Blocks.....	8
Supported IQ Engine Software.....	9
<b>Previous Release.....</b>	<b>10</b>
New Features in 25.4.0.169.....	10
Addressed Issues in 25.4.0.169.....	13
<b>Known Issues in 25.4.21-5.....</b>	<b>16</b>
<b>Device Support Information.....</b>	<b>20</b>
Controllers.....	20
Access Points.....	21
Universal Hardware.....	21
IQ Engine (Cloud Native).....	22
ExtremeWireless WiNG.....	23
Extreme Wireless.....	24
Switches.....	24
Universal Hardware.....	25
ExtremeXOS.....	42
IQ Engine (Cloud Native).....	47
VOSS.....	47
Dell EMC.....	48
Routers.....	49
ExtremeCloud IQ Site Engine.....	50
ExtremeCloud IQ CoPilot.....	53
ExtremeCloud A3.....	54
Supported Browsers and Display Settings.....	54
Desktop and Mobile Browser Support.....	54
Display Settings.....	55



# Abstract

---

This release notes document for ExtremeCloud™ IQ Classic version 25.4.3-40 outlines enhancements, resolved issues, supported devices, and known limitations across the platform. This release addresses issues with ExtremeCloud IQ displaying inconsistent data, audit logs displaying the userId instead of the username, and an issue with a missing icon. The document supports IQ Engine version 10.8.3a and includes extensive device compatibility matrices for controllers, access points, switches, routers, and third-party hardware. It provides detailed public IP address blocks for global data centers and firewall configurations. Known issues span UI inconsistencies, configuration push errors, and licensing anomalies. The guide is technically comprehensive, targeting IT professionals with advanced configuration needs, and includes supplemental CLI usage, and browser/display compatibility requirements.



# Help and Support

---

If you require assistance, contact Extreme Networks using one of the following methods:

## Extreme Portal

Search the GTAC (Global Technical Assistance Center) knowledge base; manage support cases and service contracts; download software; and obtain product licensing, training, and certifications.

## The Hub

A forum for Extreme Networks customers to connect with one another, answer questions, and share ideas and feedback. This community is monitored by Extreme Networks employees, but is not intended to replace specific guidance from GTAC.

## Call GTAC

For immediate support: (800) 998 2408 (toll-free in U.S. and Canada) or 1 (408) 579 2800. For the support phone number in your country, visit [www.extremenetworks.com/support/contact](http://www.extremenetworks.com/support/contact).



# General Release Information

---



## Note

All instances of ExtremeCloud IQ in this guide refer to ExtremeCloud IQ (Classic).

## Current Release: 25.4.3-40

---

August 2025

## Release: 25.4.3-40 New Features

---

There are no new features for this release.

## Release: 25.4.3-40 Addressed Issues

---

Issue ID	Description
CFD-14305 (Internal)	We resolved an issue where the audit logs, for a site created in Extreme Platform ONE, displayed the <b>userId</b> instead of the actual username.
CFD-14514 (Internal)	We resolved an issue where the <b>Configured at Device Level</b> icon was missing from the <b>Network Devices</b> page.
CFD-14533 (Internal)	We resolved an issue where the <b>Connectivity Issues</b> widget displayed inconsistent data.
XCP-10855	We resolved an issue where the <b>License</b> widget showed inconsistent data.

## Release: 25.4.22-3 New Features

---

There are no new features for this release.

## Release: 25.4.22-3 Addressed Issues

Issue ID	Description
NVO-9473	We resolved an issue where ExtremeCloud IQ displayed an <b>Access Denied</b> message when a user with the Observer role selected an access point in <b>Access</b> view.
XCP-10865	We resolved an issue where a user with the NetSecOps role was unable to access new sites created by that user.

## Release: 25.4.21-5 New Features

Feature ID	Feature	Description
XIQ-44134	Fabric Engine and VOSS 9.2.1.1 Onboard, Monitor, Config, and Download Image Support	ExtremeCloud IQ supports onboarding, monitoring, and image download with Fabric Engine and VOSS 9.2.1.1. The supported switch models are: <ul style="list-style-type: none"><li>• AP7720</li><li>• AP7520</li><li>• AP5720</li><li>• AP5520</li><li>• AP5420</li><li>• AP5320</li><li>• Applicable 4220 Universal switches</li><li>• VSP7400</li><li>• VSP4900</li></ul>

## Release: 25.4.21-5 Addressed Issues

Issue ID	Description
CFD-14508 (03126708)	We resolved an issue where the policy sync from Universal ZTNA to ExtremeCloud IQ fails. The policy status gets stuck in the Pending status after selecting <b>Sync Device</b> on the <b>Network Resources</b> page.
CFD-14628 (03143791, 03144249, 03144270, 03144354, 03144246)	We resolved an issue where the status for hundreds of devices changed to <b>Unmanaged</b> after upgrading to Release 25.4, despite there being sufficient licenses to cover the devices.

## ExtremeCloud IQ Public IP Address Blocks

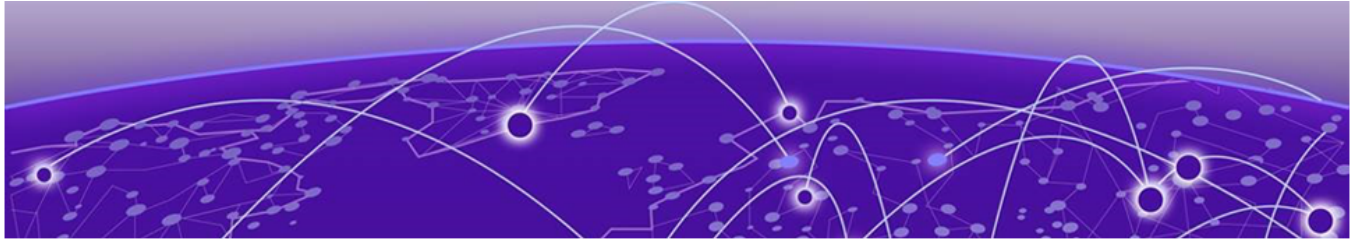
Data Center	IP Block	Addresses and Ports
Global Data Center (GDC)	44.234.22.92/30 18.194.95.0/28 34.253.190.192/26 3.234.248.0/27	
Australia (AUS)	13.210.3.192/28	<a href="#">Firewall Address and Port Information</a>
Azure, Canada Central (ACA)	20.151.64.48/28	<a href="#">Firewall Address and Port Information</a>
Azure, US East (AVA)	52.226.89.112/28	<a href="#">Firewall Address and Port Information</a>
Brazil (BR)	18.228.70.16/28	<a href="#">Firewall Address and Port Information</a>
Germany (FRA)	3.67.81.96/27 18.194.95.0/28	<a href="#">Firewall Address and Port Information</a>
India (IN)	13.232.67.8/29 3.6.70.64/29	<a href="#">Firewall Address and Port Information</a>
Ireland (IE)	34.253.190.192/26	<a href="#">Firewall Address and Port Information</a>
Japan (JP)	18.176.203.112/29 13.231.6.232/29 57.181.58.0/28	<a href="#">Firewall Address and Port Information</a>
Netherlands (NL-GCP)	34.91.82.64/27	<a href="#">Firewall Address and Port Information</a>
Singapore (SG-GCP)	34.87.158.80/28	<a href="#">Firewall Address and Port Information</a>
Spain (ES)	18.101.49.128/27	<a href="#">Firewall Address and Port Information</a>
Sweden (SE)	13.48.186.224/29 13.48.4.184/29 13.48.4.240/28	<a href="#">Firewall Address and Port Information</a>
Switzerland (ACH)	51.107.1.192/28	<a href="#">Firewall Address and Port Information</a>
United Arab Emirates (UAE)	3.28.159.128/28	<a href="#">Firewall Address and Port Information</a>
United Kingdom (UK-AGB)	51.143.233.80/28	<a href="#">Firewall Address and Port Information</a>
US East (VA )	34.202.197.0/26 44.192.245.0/26 3.234.248.0/27	<a href="#">Firewall Address and Port Information</a>
US East 2 (VA2)	34.202.197.0/26 44.192.245.0/26 3.234.248.0/27	<a href="#">Firewall Address and Port Information</a>
US-Iowa (IA-GCP)	34.67.130.64/27	<a href="#">Firewall Address and Port Information</a>
US Ohio (OH)	3.145.235.64/26	<a href="#">Firewall Address and Port Information</a>



## Supported IQ Engine Software

---

See the [IQ Engine Release Notes](#) for information about IQ Engine version 10.8.3.



## Previous Release

---

[New Features in 25.4.0.169](#) on page 10

[Addressed Issues in 25.4.0.169](#) on page 13

This section lists the new features, addressed issues, and known issues for the previous release.

### New Features in 25.4.0.169

---

#### Device OS Support

This release supports the following device operating systems.

**Table 1: EXOS/Switch Engine Support Matrix**

XIQ Release 25r4	Version	Hardware/Model	XIQ Onboard / Monitor / Config / Local Image Mgmt	Global Download Image
IQAgent Version	0.9.22/1.9.22 (0.9.22 for NOS versions <= 33.2 1.9.22 for NOS versions >= 33.2)			
	—	5120 Universal HW	✓	—
	—	5320-16P-2MXT-2X Universal HW	✓	—
Latest Supported GA Patch	32.7.2.19-patch1-32	—	✓	✓
Latest Supported GA Image	33.3 GA	X465	✓	✓
Previous Supported GA Patch	31.7.4.2 GA	—	—	✓
Previous Supported GA Image	33.3.1.12	—	✓	✓

**Table 2: VOSS Fabric Engine Support Matrix**

XIQ Release 25r4	Version	Hardware Model	XIQ Onboard / Monitor / Config / Local Image Mgmt	Global Download Image
IQAgent Version	9.2.25			
Latest Supported GA Patch	9.2.0	—	✓	✓
Previous Supported GA Patch	9.1.1	—	✓	✓
Previous Supported GA Image	8.10.7	—	✓	✓

#### IQ Engine

- IQ Engine 10.8.3

#### New Hardware Support

There is no new supported hardware for this release.

**Table 3: New Extreme Essentials Features in 25.4.0**

Feature ID	Feature	Description
XESS-966	Support for special characters in the (SSID) broadcast name	SSIDs for use with Guest Essentials can have different SSID and Broadcast names. The broadcast name supports space, ampersand(&), and underscore(_) as special characters in the broadcast name.
XESS-1842	Remove Facebook social login from Guest Essentials	We removed Facebook as a social login option for Guest Essentials.
XESS-1848	AP4020 - Essentials support	The AP4020 fully supports all Essentials functionality.

**Table 4: New Features in 25.4.0.169**

Feature ID	Feature	Description
XCP-3994	Licensing Enhancement	When ExtremeCloud IQ detects a license violation state, devices are automatically unmanaged. The Device License value changes to "Not Licensed" and the screen is not locked anymore. A new filter display only devices with the "Not Licensed" value.
XIQ-16899	AP3000/AP5020/AP4020: D360/N360: ManageDevice/ Maps/Dashboard: With different operating modes, statistics were not showing the correct WiFi Interface	To populate the correct interface name in the statistics, reconnect all WiNG clients to the corresponding APs.

**Table 4: New Features in 25.4.0.169 (continued)**

Feature ID	Feature	Description
XIQ-22017	Packet Capture Page Now Supports Deletion of Multiple Captures	ExtremeCloud IQ supports deleting multiple captures from the <b>Packet Capture Page</b> .
XIQ-29744	AP5020: Support for AKM 24 for WPA3-Personal (SAE)	SSID configuration supports enabling AKM-24 for Wi-Fi 7 access points.
XIQ-35543	AP4020: Support for Essentials Sensing the 4th radio	ExtremeCloud IQ supports the 4th radio (dedicated sensor) on the AP4020.
XIQ-35635	WiFi7 Platforms - Enhancement to Reduced Neighbor Report (RNR)	The AP4020 and AP5020 (Wi-Fi 7) access points support Enhanced Reduced Neighbor Report (eRNR).
XIQ-35990	Support 802.3az Green Ethernet for 3K/5K series APs	ExtremeCloud IQ supports Energy-Efficient Ethernet (EEE) or IEEE 802.3az for the AP3000/X, AP5010, and AP5050U/D. With this feature, physical layer transmitters consume less power when they are in a state of idleness or low data activity. Toggle the feature setting from the wired port configuration in Device360 or in the device templates.
XIQ-39097	Indoor AFC Support	ExtremeCloud IQ supports the following indoor AFC features: <ul style="list-style-type: none"> <li>• LPI and SP power modes</li> <li>• AFC Schedule Update</li> <li>• Set as anchor/unanchor (AP5050 only)</li> <li>• 6 GHz standard power floor support</li> <li>• AFC Wireless View: <ul style="list-style-type: none"> <li>◦ Recalculate GPS Location</li> <li>◦ Send AP Range Info</li> </ul> </li> <li>• Indoor AFC support for AP4020/AP4020X/AP5020/AP5050</li> </ul>
XIQ-39768	Support for SP indoor AFC platforms: AFC Mobile App	The AFC Mobile App sets the geo-coordinates for indoor APs, where GPS lock does not occur. The mobile app queries ExtremeCloud IQ for the AP data and then reports the GPS location of the APs to ExtremeCloud IQ for further processing.
XIQ-40790	Support for ExtremeCloud IQ 10.8r3	ExtremeCloud IQ 25.4 supports IQ Engine 10.8.3. For details, see the Release Notes for IQ Engine.
XIQ-41867	LLDP Handling for Upgrade/Backward Compatibility (AP302W, AP305C, AP410C, AP460C, AP510C)	For IQ Engine Release 10.8.3, LLDP is enabled by default for AP302W, AP305C, AP410C, AP460C, and AP510C, and for these device models new, out-of-the-box.

**Table 4: New Features in 25.4.0.169 (continued)**

Feature ID	Feature	Description
XIQ-42842	LLDP Handling for Upgrade/Backward Compatibility (AP4000)	For IQ Engine Release 10.8.3, LLDP is enabled by default for the AP4000, and for new AP4000 devices, out-of-the-box.
XIQ-43486	4020FX: Local onboarding/enhanced discovery support in ExtremeCloud IQ 25.4.	ExtremeCloud IQ supports onboarding for the new AP4020FX for locally managed deployments.

## Addressed Issues in 25.4.0.169

**Table 5: Addressed Issues in 25.4.0.169**

Issue ID	Description
CFD-11571 (02925873)	We fixed a code issue with the UI of XR routers, where the D360-> DHCP & IP addressing page showed too few available dynamic DHCP IPs, even though the DHCP clients were disconnected and the DHCP lease time ended.
CFD-13615 (03079743)	We resolved an issue where ExtremeCloud IQ provided <b>MFP Auto</b> as an option with WPA2.
CFD-13686 (03071339)	We resolved an issue with the AP_302W-default-template in some VIQs. The affected template included a command to set eth0 to bridge-access, which caused the device to lose the backhaul to the network.
CFD-13712 (03078029)	We resolved an issue where CAPWAP alert emails did not contain the device location.
CFD-13771 (03068267)	We resolved an issue where ExtremeCloud IQ displays an "Adequate Power Supply" of 0% in the device details for AP510s using 802.3af power.
CFD-13800 (03089495)	We resolved an issue with RADSEC proxy elections.
CFD-13815 (03091422, 03112903)	We resolved an issue where the SSID "Used by" column displayed inaccurate or sporadic data.
CFD-13839 (03090571, 03102942, 03119294)	We resolved an issue with error messages when trying to delete a map.
CFD-13905 (03096815, 03098706, 03101754, 03096819)	We resolved an issue where ExtremeCloud IQ did not show access points as connected, caused by backend throttling limitations.
CFD-13922 (03097244)	We resolved an issue where Bonjour filter rules were saved after editing.
CFD-13954 (03098772, 03120415)	We resolved an issue where ExtremeCloud IQ returned an error message when trying to assign channels 36-64 on AP460C and AP460S12C models, even when properly set for indoor mode with the country code 380.

**Table 5: Addressed Issues in 25.4.0.169 (continued)**

Issue ID	Description
CFD-13979 (03102897)	We corrected a translation issue for the Dutch language.
CFD-13992 (03093826,03103710, 03109749, 03109321)	We resolved an issue where only the configuration pushed by S-CLI remained after power restoration for an AP, if the <b>CLI Commands</b> field contained the "save config" line.
CFD-14021 (03103597)	We made improvements to the backup/export function to resolve an issue where the VIQ was suspended for an overly long period.
CFD-14046 (03097749)	We resolved an issue where some switches displayed the message "An unknown error has occurred", caused by an <code>ArrayIndexOutOfBoundsException</code> .
CFD-14068 (03100287)	We resolved an issue where ExtremeCloud IQ was very slow and became unresponsive causing difficulties in network monitoring if a query requested an excessive amount of data.
CFD-14077 (03109596, 03121664)	We resolved an issue where events could not be exported from <b>Manage &gt; Events</b> .
CFD-14088 (03095504)	We resolved an issue where Copilot showed only the details of the first anomaly in the <b>Copilot Anomaly</b> list.
CFD-14133 (03103870)	We resolved an issue where personnel with Installer Roles could not add or move devices on floor plans.
CFD-14166 (03117101, 03115751,03117199, 03117159, 03121520, 03123304, 03128194)	We resolved an issue where Plan Devices could not be added to a map in <b>Manage &gt; Planning</b> .
CFD-14174 (03086167, 03118801, 03124497, 03124133, 03124496, 03127096,03131785,03132902,03132432)	We resolved an issue where ExtremeCloud IQ could not generate reports, and users could not access reports.
CFD-14189 (03116209)	We resolved an issue where delta and complete updates sometimes hung at <b>Queued</b> for up to two hours.
CFD-14201 (03118187)	We resolved an issue where wall materials were not available for floor plans when using an MSP account.
CFD-14211 (03112275, 03128107)	We resolved an issue where APs starting with WF02 could not be onboarded to Connect accounts.
CFD-14225 (03120062)	We fixed a typo in the UI for creating a new hotspot profile.
CFD-14232 (03086871)	We resolved an issue in <b>Manage &gt; Clients</b> , where some wired clients showed "undefined" values for certain columns when the data was not returned from the switches.

**Table 5: Addressed Issues in 25.4.0.169 (continued)**

Issue ID	Description
CFD-14243 (03118090)	We resolved an issue where ExtremeCloud IQ displayed the PMF settings in Korean instead of Japanese.
CFD-14252 (03117264)	We resolved an issue where heat maps did not change the attenuation of the radio signal for different wall materials.
CFD-14255 (03120789, 03123826)	We resolved an issue where saved filters did not appear in the <b>Saved Filters</b> section unless another filter was applied first.
CFD-14290 (03122236)	We resolved an issue where a network policy could not be deleted if a PPSK user group was associated with a wireless network within the policy.



## Known Issues in 25.4.21-5

The following table lists known product issues. Issues are grouped according to ID prefix and sorted within the group with the most recently logged issue listed first. (Issue IDs are in descending order.)

**Table 6: Known Issues in 25.4.21-5**

Issue ID	Description
WS-3204	When logging in to a legacy Managed Service Provider account that has legacy entitlement keys (LEK), the Extreme Platform ONE interface opens and requires linking to an Extreme Portal account. Because the account contains LEKs, the ExtremeCloud IQ Classic interface should open. Workaround: After login, manually enter the URL for the RDC. To resolve the issue, migrate from the Hierarchical VIQ to the MSP program, or purchase new License Entitlement Manager (LEM) licenses.
XIQ-39282	After successfully onboarding locally managed APs, a misleading <b>Device Update Failed</b> message might appear in the <b>Last Updated</b> field. This is only a display issue and does not affect any functionality.
XIQ-34912	Clients discovered through node alias or DHCP snooping fingerprint might not immediately appear in the Device 360 Clients table. It can take up to 10 minutes for the new entries to appear in the Device 360 Clients table.
XIQ-34908	When using a stack template with a Link Aggregation Group (LAG), if the LAG has ports from different slots, you must enable Instant Port Profile/Instant Secure Port from the LAG on the template view that contains the master port. This requirement applies to a preexisting Link Aggregation Group in the template, or when creating a new Link Aggregation Group.
XIQ-34846	On wired VOSS and Fabric Engine devices for Cisco Discovery Protocol (CDP), configuration pushed via ExtremeCloud IQ still requires enabling LLDP TX/RX status through device CLI, for a CDP neighbor to establish.
XIQ-34724	Delta configuration push fails for Wifi0 with dual 5G mode when 5G-Low channels are not supported.
XIQ-33709	Some IP VLAN pairs from the Client 360 table and Client pages might be missing if they have multiple IPs learned through Node Alias events.
XIQ-33498	AP5050 AFC 6GHz FCC does not support client mode.



**Table 6: Known Issues in 25.4.21-5 (continued)**

Issue ID	Description
XIQ-33103	The <b>AFC View</b> on the <b>Manage Device</b> page displays <i>qualified</i> AFC-governed 6 GHz access points. This feature requires version 10.7.2 or higher. The <b>AFC View</b> does not include onboarded devices with a firmware version earlier than the minimum required version. After upgrading to the minimum required version, the <b>AFC View</b> displays the qualified access points.
XIQ-32459	The ExtremeCloud IQ deployment API HTTP Success status code changed from 200 to 202.
XIQ-31601	A perimeter added or modified from the <b>Planning</b> page does not sync with the <b>Realtime</b> maps page.
XIQ-31433	The <b>Cloud Service</b> component of iBeacon is temporarily disabled. This service will be available in a future release.
XIQ-26907	A delta configuration push error might occur when configuring the port Forwarding Rule for Client Mode. <b>Workaround:</b> Push a complete configuration update.
XIQ-21339	ExtremeCloud IQ does not display the error when aggregation is enabled with a rate-limit configuration.
XIQ-20909	When configuring 6GHz radio for a country that does not support it, the configuration push to the AP3000 fails. <b>Workaround:</b> Revert to 2.4 GHz.
XIQ-19977	The MCast rate configured in an AP template does not take effect when sCLI is presented.
XIQ-19509	Access points go offline when pushed to minimum speed and half duplex transmission mode for eth0, and then they reboot. After the reboot, the configuration reverts back to minimum speed with full duplex.
XIQ-19498	When the AP5010 eth0 interface is operating with maximum speed, changing the transmission type causes ExtremeCloud IQ to also generate a delta CLI for speed.
XIQ-19379	When you initiate a "release to the cloud" from the controller, for an AP3000 that was onboarded as locally managed, the system deletes the AP from ExtremeCloud IQ Controller but not from ExtremeCloud IQ.
XIQ-19368	The user interface overrides Supplemental CLI. If you add an sCLI object and there is a code conflict with the GUI, the GUI has priority. To give the sCLI priority, place the sCLI code at the bottom of the command structure in the audit.
XIQ-19320	The Wi-Fi Interface Transmission power does not update in the <b>Managed Device</b> page after a bulk edit.
XIQ-12503	Network 360 shows <b>Unknown Error</b> when <b>All Access Points Applications</b> is selected and the user selects both ExtremeWireless WiNG and IQ Engine devices. <b>Workaround:</b> Clear selected ExtremeWireless WiNG devices.

**Table 6: Known Issues in 25.4.21-5 (continued)**

Issue ID	Description
XIQ-5700	Client Trial showed only the currently connected AP when the client roamed to a different AP from the onboarded ExtremeCloud IQ Controller.
XCP-10232	When there are insufficient licenses to cover all devices in a stack, instead of automatically unmanaging the stack, ExtremeCloud IQ locks and displays the license violation banner. <b>Workaround:</b> Manually unmanage the stack. To return the stack to managed status, purchase new subscriptions with sufficient licenses to cover all devices.
XCP-8478	When there are insufficient CoPilot licenses, the grace period does not start for stack devices. To recover, purchase new subscriptions with sufficient licenses to cover all devices.
XCP-8418	Follow-up to fix ATOM license logic.
EXOS-37458	When using ExtremeCloud IQ to configure a single port in a VLAN as an LLDP voice port with Med Capabilities and policies and then changing the port type to <b>access</b> or <b>trunk</b> , the LLDP configuration for Med Capabilities appears on ExtremeXOS/ Switch Engine devices running EXOS 33.2.
CFD-12971 (03040726)	Capwap disconnection for about 1.5 hours due to the capwap server i/o timeout issue.
CFD-13877 (03094673)	Wi-Fi Interface graph does not match <b>Device &gt; Monitoring &gt; Wireless Interface</b> .
CFD-11529 (02957942)	API response data is unclear.
CFD-10699 (02906999)	Universal Access Points failed to complete the WiNG-OS conversion, even after a successful CAPWAP and STUN binding.
CFD-8946 (02710778, 02748750)	License descriptions are automatically cleared when the Activated status is updated.
CFD-7360 (02498292)	For Wing-AP sites, contrary to present implementation, customers expect to see APs offline when ExtremeCloud IQ / nsight policy is not used for that site.

**Table 6: Known Issues in 25.4.21-5 (continued)**

Issue ID	Description
APC-41057	<p>Legend labels on the SR2200/2300 switch stack graph sometimes disappear when attempting to download or print the graph.</p> <p><b>Workaround:</b></p> <p>Download one graph at a time, and open the downloaded file before choosing to download again.</p> <p><b>Note:</b> The SVG option is the most stable format; PNG, JPG, and PDF have spacing issues on the legend section.</p>
APC-21456	<p>In rare cases, ExtremeCloud IQ does not upload some IGMP sub-commands successfully.</p> <p><b>Note:</b> SR2200/2300 only.</p> <p><b>Workaround:</b> Use the <b>Supplemental CLI</b> to upload commands when necessary. To use the supplemental CLI tool, go to <b>Global Settings &gt; VIQ Management</b>, and set the <b>Supplemental CLI</b> slider to <b>ON</b>.</p>



# Device Support Information

---

[Controllers](#) on page 20  
[Access Points](#) on page 21  
[Switches](#) on page 24  
[Routers](#) on page 49  
[ExtremeCloud IQ Site Engine](#) on page 50  
[ExtremeCloud IQ CoPilot](#) on page 53  
[ExtremeCloud A3](#) on page 54  
[Supported Browsers and Display Settings](#) on page 54

This section lists the devices that ExtremeCloud IQ supports and includes the latest version of the software that each device supports.

## Controllers

---

Device Model	Latest Supported Release	Comments
E1120	XIQC 10.14.01	Monitor only
E2120	XIQC 10.14.01	Monitor only
E2122	XIQC 10.14.01	Monitor only
E3120	XIQC 10.14.01	Monitor only
E3125	XIQC 10.14.01	Monitor only
VE6120	XIQC 10.14.01	Monitor only
VE6120H	XIQC 10.14.01	Monitor only
VE6120K	XIQC 10.14.01	Monitor only
VE6125	XIQC 10.14.01	Monitor only
VE6125K	XIQC 10.14.01	Monitor only
NX5500	WiNG OS 7.9.6.1	Monitor only
NX7500 Series	WiNG OS 7.9.6.1	Monitor only
NX9500 Series	WiNG OS 7.7.1.9	Monitor only
NX9600 Series	WiNG OS 7.9.6.1	Monitor only
RFS4000 Series	WiNG OS 5.9.7.1	Monitor only
RFS6000 Series	WiNG OS 5.9.1.8	Monitor only

Device Model	Latest Supported Release	Comments
RFS7000 Series	WiNG OS 5.8.6.11	Monitor only
VX9000	WiNG OS 7.9.6.1	Monitor only

## Access Points

Access Point information is provided in the following sections:

- [Universal Hardware](#) on page 21
- [IQ Engine \(Cloud Native\)](#) on page 22
- [ExtremeWireless WiNG](#) on page 23
- [Extreme Wireless](#) on page 24

## Universal Hardware

Device Model	Latest Supported Release	Comments
AP302W	IQ Engine 10.8.2 WiNG OS 7.9.6.0 AP 10.14.1	Platform support introduced with IQ Engine 10.3.1
AP305C	IQ Engine 10.8.2 WiNG OS 7.9.6.0 AP 10.14.1	Platform support introduced with IQ Engine 10.1.1
AP305C-1	IQ Engine 10.8.2 WiNG OS 7.9.6.0 AP 10.14.1	Platform support introduced with IQ Engine 10.4.6
AP305CX	IQ Engine 10.8.2 WiNG OS 7.9.6.0 AP 10.14.1	Platform support introduced with IQ Engine 10.1.1
AP3000	IQ Engine 10.8.2 AP 10.14.1	Platform support introduced with IQ engine 10.6.1
AP3000X	IQ Engine 10.8.2	Platform support introduced with IQ Engine 10.6.1
AP4000	IQ Engine 10.8.2 AP 10.14.1	Platform support introduced with IQ Engine 10.4.1
AP4000-1	IQ Engine 10.8.2 AP 10.14.1	Platform support introduced with IQ Engine 10.4.2
AP4020	IQ Engine 10.8.2a	Platform support introduced with IQ Engine 10.8.1
AP410C	IQ Engine 10.8.2 WiNG OS 7.9.6.0 AP 10.14.1	Platform support introduced with IQ Engine 10.1.2

Device Model	Latest Supported Release	Comments
AP410C-1	IQ Engine 10.8.2 WiNG OS 7.9.6.0 AP 10.14.1	Platform support introduced with IQ Engine 10.4.6
AP460C	IQ Engine 10.8.2 WiNG OS 7.9.6.0 AP 10.14.1	Platform support introduced with IQ Engine 10.1.2
AP460S6C	IQ Engine 10.8.2 WiNG OS 7.9.6.0 AP 10.14.1	Platform support introduced with IQ Engine 10.1.2
AP460S12C	IQ Engine 10.8.2 WiNG OS 7.9.6.0 AP 10.14.1	Platform support introduced with IQ Engine 10.1.2
AP5010	IQ Engine 10.8.2 WiNG OS 7.9.6.0 AP 10.14.1	Platform support introduced with IQ Engine 10.5.1
AP5020	IQ Engine 10.8.2a AP 10.14.1	Platform support introduced with IQ Engine 10.7.2
AP5050U	IQ Engine 10.8.2 AP 10.14.1	Platform support introduced with IQ Engine 10.5.3
AP5050D	IQ Engine 10.8.2 AP 10.14.1	Platform support introduced with IQ Engine 10.5.3
AP510C/CX	IQ Engine 10.8.2b	Platform support introduced with IQ Engine 10.0.8

## IQ Engine (Cloud Native)

Device Model	Latest Supported Release	Comments
AP630	IQ Engine 10.8.2	Platform support introduced with IQ Engine 10.0.1. <a href="#">End of Life Information</a>
AP650	IQ Engine 10.8.2	Platform support introduced with IQ Engine 10.0.1. <a href="#">End of Life Information</a>
AP650X	IQ Engine 10.8.2	Platform support introduced with IQ Engine 10.0.1. <a href="#">End of Life Information</a>
AP1130	IQ Engine 10.6.1a	Platform support introduced with IQ Engine 8.2.1. <a href="#">End of Life Information</a>
AP250	IQ Engine 10.6.1a	Platform support introduced with IQ Engine 7.0.2.
AP230	IQ Engine 10.6.1a	Platform support introduced with IQ Engine 8.2.1. <a href="#">End of Life Information</a>

Device Model	Latest Supported Release	Comments
AP150W	IQ Engine 10.6.1a	Platform support introduced with IQ Engine 8.1.1. <a href="#">End of Life Information</a>
AP130	IQ Engine 10.6.1a	Platform support introduced with IQ Engine 8.2.1. <a href="#">End of Life Information</a>
AP122	IQ Engine 10.6.1a	Platform support introduced with IQ Engine 7.0.4.
Atom AP30	IQ Engine 10.6.1a	Platform support introduced with IQ Engine 8.3.2. <a href="#">End of Life Information</a>

## ExtremeWireless WiNG

Device Model	Latest Supported Release	Comments
AP560i	WiNG OS 7.9.6.0	Monitor only
AP560h	WiNG OS 7.9.6.0	Monitor only
AP505	WiNG OS 7.9.6.0	Monitor only
AP510i	WiNG OS 7.9.6.0	Monitor only
AP510i-1	WiNG OS 7.9.6.0	Monitor only
AP460i/e	WiNG OS 7.9.6.0	Monitor only
AP410i/e	WiNG OS 7.9.6.0	Monitor only
AP410i-1	WiNG OS 7.9.6.0	Monitor only
AP360i/e	WiNG OS 7.9.6.0	Monitor only
AP310i/e	WiNG OS 7.9.6.0	Monitor only
AP310i/e-1	WiNG OS 7.9.6.0	Monitor Only
AP3000	WiNG OS 7.9.6.0	Monitor Only
AP8533	WiNG OS 7.7.1.11	Monitor only
AP8432	WiNG OS 7.7.1.11	Monitor only
AP8232	WiNG OS 5.9.1.8	Monitor only
AP8222	WiNG OS 5.8.6.11	Monitor only
AP8163	WiNG OS 5.9.7.1	Monitor only
AP8132	WiNG OS 5.9.1.8	Monitor only
AP8122	WiNG OS 5.9.1.8	Monitor only
AP7662	WiNG OS 7.7.1.11	Monitor only
AP7632	WiNG OS 7.7.1.11	Monitor only
AP7622	WiNG OS 5.9.7.1	Monitor only
AP7612	WiNG OS 7.7.1.11	Monitor only
AP7602	WiNG OS 5.9.7.1	Monitor only

Device Model	Latest Supported Release	Comments
AP7562	WiNG OS 7.7.1.11	Monitor only
AP7532	WiNG OS 7.7.1.11	Monitor only
AP7522	WiNG OS 7.7.1.11	Monitor only
AP7502	WiNG OS 5.9.7.1	Monitor only
AP7161	WiNG OS 5.9.1.8	Monitor only
AP7131	WiNG OS 5.8.6.11	Monitor only
AP6562	WiNG OS 5.9.1.8	Monitor only
AP6532	WiNG OS 5.9.1.8	Monitor only
AP6522	WiNG OS 5.9.1.8	Monitor only
AP6521	WiNG OS 5.9.1.8	Monitor only
AP6511	WiNG OS 5.8.6.11	Monitor only

## Extreme Wireless

Device Model	Latest Supported Release	Comments
AP3965	ExtremeWireless 10.51	Monitor only
AP3935	ExtremeWireless 10.51	Monitor only
AP3917	ExtremeWireless 10.51	Monitor only
AP3916C	ExtremeWireless 10.51	Monitor only
AP3915	ExtremeWireless 10.51	Monitor only
AP3912	ExtremeWireless 10.51	Monitor only
SA201	ExtremeWireless 10.51	Monitor only

## Switches

Switch information is provided in the following sections:

- [Universal Hardware](#) on page 25
- [ExtremeXOS](#) on page 42
- [VOSS](#) on page 47
- [Dell EMC](#) on page 48

For the latest release notes for Fabric Engine and Switch Engine , see the [Extreme Networks Documentation Site](#).



## Universal Hardware

Device Model	Latest Supported Release	Standalone Support	Stack Support
4120-24MW-4Y	Switch Engine 33.2	<ul style="list-style-type: none"> <li>Onboard</li> <li>Monitor</li> <li>Template- and device-level configuration</li> <li>SSH Proxy*</li> <li>Supplemental CLI*</li> </ul> <p><b>Note:</b> Pilot license required to configure advanced features.</p>	<ul style="list-style-type: none"> <li>Onboard</li> <li>Monitor</li> <li>Template- and device-level configuration</li> <li>SSH Proxy*</li> <li>Up to 8 unit stacking</li> <li>200Gb stacking through two built-in QSFP28 ports</li> </ul> <p><b>Note:</b> Can only stack with other 4120 devices. Cross stacking between 4120 and 4220 is not supported. Cross stacking between 4000 and 5000 is not supported.</p>
4120-48MW-4Y	Switch Engine 33.2	<ul style="list-style-type: none"> <li>Onboard</li> <li>Monitor</li> <li>Template- and device-level configuration</li> <li>SSH Proxy*</li> <li>Supplemental CLI*</li> </ul> <p><b>Note:</b> Pilot license required to configure advanced features.</p>	<ul style="list-style-type: none"> <li>Onboard</li> <li>Monitor</li> <li>Template- and device-level configuration</li> <li>SSH Proxy*</li> <li>Up to 8 unit stacking</li> <li>200Gb stacking through two built-in QSFP28 ports</li> </ul> <p><b>Note:</b> Can only stack with other 4120 devices. Cross stacking between 4120 and 4220 is not supported. Cross stacking between 4000 and 5000 is not supported.</p>

Device Model	Latest Supported Release	Standalone Support	Stack Support
4120-Series-Stack	Switch Engine 33.2	<ul style="list-style-type: none"> <li>Onboard</li> <li>Monitor</li> <li>Template- and device-level configuration</li> <li>SSH Proxy*</li> <li>Supplemental CLI*</li> </ul> <p><b>Note:</b> Pilot license required to configure advanced features.</p>	<ul style="list-style-type: none"> <li>Onboard</li> <li>Monitor</li> <li>Template- and device-level configuration</li> <li>SSH Proxy*</li> <li>Up to 8 unit stacking</li> <li>200Gb stacking through two built-in QSFP28 ports</li> </ul> <p><b>Note:</b> Can only stack with other 4120 devices. Cross stacking between 4120 and 4220 is not supported. Cross stacking between 4000 and 5000 is not supported.</p>
4220-12P-4X	Switch Engine 33.2	<p><b>Switch Engine:</b></p> <ul style="list-style-type: none"> <li>Onboard</li> <li>Monitor</li> <li>Template- and device-level configuration</li> <li>SSH Proxy*</li> <li>Supplemental CLI*</li> </ul> <p><b>Fabric Engine:</b> Monitor</p> <p><b>Note:</b> Pilot license required to configure advanced features.</p>	<ul style="list-style-type: none"> <li>Onboard</li> <li>Monitor</li> <li>Template- and device-level configuration</li> <li>SSH Proxy*</li> <li>Up to 8 unit stacking</li> <li>40Gb stacking through two built-in SFP+ uplink ports</li> </ul> <p><b>Note:</b> Can only stack with other 4220 devices. Cross stacking between 4120 and 4220 is not supported. Cross stacking between 4000 and 5000 is not supported.</p>

Device Model	Latest Supported Release	Standalone Support	Stack Support
4220-12T-4X	Switch Engine 33.2	<b>Switch Engine:</b> <ul style="list-style-type: none"> <li>Onboard</li> <li>Monitor</li> <li>Template- and device-level configuration</li> <li>SSH Proxy*</li> <li>Supplemental CLI*</li> </ul> <b>Fabric Engine:</b> Monitor <b>Note:</b> Pilot license required to configure advanced features.	<ul style="list-style-type: none"> <li>Onboard</li> <li>Monitor</li> <li>Template- and device-level configuration</li> <li>SSH Proxy*</li> <li>Up to 8 unit stacking</li> <li>40Gb stacking through two built-in SFP+ uplink ports</li> </ul> <b>Note:</b> Can only stack with other 4220 devices. Cross stacking between 4120 and 4220 is not supported. Cross stacking between 4000 and 5000 is not supported.
4220-24P-4X	Switch Engine 33.2	<b>Switch Engine:</b> <ul style="list-style-type: none"> <li>Onboard</li> <li>Monitor</li> <li>Template- and device-level configuration</li> <li>SSH Proxy*</li> <li>Supplemental CLI*</li> </ul> <b>Fabric Engine:</b> Monitor <b>Note:</b> Pilot license required to configure advanced features.	<ul style="list-style-type: none"> <li>Onboard</li> <li>Monitor</li> <li>Template- and device-level configuration</li> <li>SSH Proxy*</li> <li>Up to 8 unit stacking</li> <li>40Gb stacking through two built-in SFP+ uplink ports</li> </ul> <b>Note:</b> Can only stack with other 4220 devices. Cross stacking between 4120 and 4220 is not supported. Cross stacking between 4000 and 5000 is not supported.

Device Model	Latest Supported Release	Standalone Support	Stack Support
4220-24T-4X	Switch Engine 33.2	<b>Switch Engine:</b> <ul style="list-style-type: none"> <li>Onboard</li> <li>Monitor</li> <li>Template- and device-level configuration</li> <li>SSH Proxy*</li> <li>Supplemental CLI*</li> </ul> <b>Fabric Engine:</b> Monitor <b>Note:</b> Pilot license required to configure advanced features.	<ul style="list-style-type: none"> <li>Onboard</li> <li>Monitor</li> <li>Template- and device-level configuration</li> <li>SSH Proxy*</li> <li>Up to 8 unit stacking</li> <li>40Gb stacking through two built-in SFP+ uplink ports</li> </ul> <b>Note:</b> Can only stack with other 4220 devices. Cross stacking between 4120 and 4220 is not supported. Cross stacking between 4000 and 5000 is not supported.
4220-48P-4X	Switch Engine 33.2	<ul style="list-style-type: none"> <li>Onboard</li> <li>Monitor</li> <li>Template- and device-level configuration</li> <li>SSH Proxy*</li> <li>Supplemental CLI*</li> </ul> <b>Note:</b> Pilot license required to configure advanced features.	<ul style="list-style-type: none"> <li>Onboard</li> <li>Monitor</li> <li>Template- and device-level configuration</li> <li>SSH Proxy*</li> <li>Up to 8 unit stacking</li> <li>40Gb stacking through two built-in SFP+ uplink ports</li> </ul> <b>Note:</b> Can only stack with other 4220 devices. Cross stacking between 4120 and 4220 is not supported. Cross stacking between 4000 and 5000 is not supported.

Device Model	Latest Supported Release	Standalone Support	Stack Support
4220-48T-4X	Switch Engine 33.2	<ul style="list-style-type: none"> <li>Onboard</li> <li>Monitor</li> <li>Template- and device-level configuration</li> <li>SSH Proxy*</li> <li>Supplemental CLI*</li> </ul> <p><b>Note:</b> Pilot license required to configure advanced features.</p>	<ul style="list-style-type: none"> <li>Onboard</li> <li>Monitor</li> <li>Template- and device-level configuration</li> <li>SSH Proxy*</li> <li>Up to 8 unit stacking</li> <li>40Gb stacking through two built-in SFP+ uplink ports</li> </ul> <p><b>Note:</b> Can only stack with other 4220 devices. Cross stacking between 4120 and 4220 is not supported. Cross stacking between 4000 and 5000 is not supported.</p>
4220-4MW-20P-4X	Switch Engine 33.2	<p><b>Switch Engine:</b></p> <ul style="list-style-type: none"> <li>Onboard</li> <li>Monitor</li> <li>Template- and device-level configuration</li> <li>SSH Proxy*</li> <li>Supplemental CLI*</li> </ul> <p><b>Fabric Engine:</b> Monitor</p> <p><b>Note:</b> Pilot license required to configure advanced features.</p>	<ul style="list-style-type: none"> <li>Onboard</li> <li>Monitor</li> <li>Template- and device-level configuration</li> <li>SSH Proxy*</li> <li>Up to 8 unit stacking</li> <li>40Gb stacking through two built-in SFP+ uplink ports</li> </ul> <p><b>Note:</b> Can only stack with other 4220 devices. Cross stacking between 4120 and 4220 is not supported. Cross stacking between 4000 and 5000 is not supported.</p>

Device Model	Latest Supported Release	Standalone Support	Stack Support
4220-4MW-8P-4X	Switch Engine 33.2	<b>Switch Engine:</b> <ul style="list-style-type: none"> <li>Onboard</li> <li>Monitor</li> <li>Template- and device-level configuration</li> <li>SSH Proxy*</li> <li>Supplemental CLI*</li> </ul> <b>Fabric Engine:</b> Monitor  <b>Note:</b> Pilot license required to configure advanced features.	<ul style="list-style-type: none"> <li>Onboard</li> <li>Monitor</li> <li>Template- and device-level configuration</li> <li>SSH Proxy*</li> <li>Up to 8 unit stacking</li> <li>40Gb stacking through two built-in SFP+ uplink ports</li> </ul> <b>Note:</b> Can only stack with other 4220 devices. Cross stacking between 4120 and 4220 is not supported. Cross stacking between 4000 and 5000 is not supported.
4220-8MW-40P-4X	Switch Engine 33.2	<b>Switch Engine:</b> <ul style="list-style-type: none"> <li>Onboard</li> <li>Monitor</li> <li>Template- and device-level configuration</li> <li>SSH Proxy*</li> <li>Supplemental CLI*</li> </ul> <b>Fabric Engine:</b> Monitor  <b>Note:</b> Pilot license required to configure advanced features.	<ul style="list-style-type: none"> <li>Onboard</li> <li>Monitor</li> <li>Template- and device-level configuration</li> <li>SSH Proxy*</li> <li>Up to 8 unit stacking</li> <li>40Gb stacking through two built-in SFP+ uplink ports</li> </ul> <b>Note:</b> Can only stack with other 4220 devices. Cross stacking between 4120 and 4220 is not supported. Cross stacking between 4000 and 5000 is not supported.

Device Model	Latest Supported Release	Standalone Support	Stack Support
4220-8X	Switch Engine 33.2	<b>Switch Engine:</b> <ul style="list-style-type: none"> <li>Onboard</li> <li>Monitor</li> <li>Template- and device-level configuration</li> <li>SSH Proxy*</li> <li>Supplemental CLI*</li> </ul> <b>Fabric Engine:</b> Monitor <b>Note:</b> Pilot license required to configure advanced features.	<ul style="list-style-type: none"> <li>Onboard</li> <li>Monitor</li> <li>Template- and device-level configuration</li> <li>SSH Proxy*</li> <li>Up to 8 unit stacking</li> <li>40Gb stacking through two built-in SFP+ uplink ports</li> </ul> <b>Note:</b> Can only stack with other 4220 devices. Cross stacking between 4120 and 4220 is not supported. Cross stacking between 4000 and 5000 is not supported.
4220-Series-Stack	Switch Engine 33.2	<ul style="list-style-type: none"> <li>Onboard</li> <li>Monitor</li> <li>Template- and device-level configuration</li> <li>SSH Proxy*</li> <li>Supplemental CLI*</li> </ul> <b>Note:</b> Pilot license required to configure advanced features.	<ul style="list-style-type: none"> <li>Onboard</li> <li>Monitor</li> <li>Template- and device-level configuration</li> <li>SSH Proxy*</li> <li>Up to 8 unit stacking</li> <li>40Gb stacking through two built-in SFP+ uplink ports</li> </ul> <b>Note:</b> Can only stack with other 4220 devices. Cross stacking between 4120 and 4220 is not supported. Cross stacking between 4000 and 5000 is not supported.

Device Model	Latest Supported Release	Standalone Support	Stack Support
5120-24X-4Y	Switch Engine 33.2	<ul style="list-style-type: none"> <li>Onboard</li> <li>Monitor</li> <li>Template- and device-level configuration</li> <li>SSH Proxy*</li> <li>Supplemental CLI*</li> </ul> <p><b>Note:</b> Pilot license required to configure advanced features.</p>	<ul style="list-style-type: none"> <li>Onboard</li> <li>Monitor</li> <li>Template- and device-level configuration</li> <li>SSH Proxy*</li> <li>Up to 8 unit stacking</li> <li>Ability to toggle universal ports from stacking-support enabled to stacking-support disabled</li> <li>Two QSFP28 uplink ports that can operate at 1x100G, 4x10G, or 4x25G</li> </ul> <p><b>Note:</b> Can only stack with other 5120 devices. Cross stacking between 4000 and 5000 is not supported.</p>
5120-24XT-4Y	Switch Engine 33.2	<ul style="list-style-type: none"> <li>Onboard</li> <li>Monitor</li> <li>Template- and device-level configuration</li> <li>SSH Proxy*</li> <li>Supplemental CLI*</li> </ul> <p><b>Note:</b> Pilot license required to configure advanced features.</p>	<ul style="list-style-type: none"> <li>Onboard</li> <li>Monitor</li> <li>Template- and device-level configuration</li> <li>SSH Proxy*</li> <li>Up to 8 unit stacking</li> <li>Ability to toggle universal ports from stacking-support enabled to stacking-support disabled</li> <li>Two QSFP28 uplink ports that can operate at 1x100G, 4x10G, or 4x25G</li> </ul> <p><b>Note:</b> Can only stack with other 5120 devices. Cross stacking between 4000 and 5000 is not supported.</p>



Device Model	Latest Supported Release	Standalone Support	Stack Support
5120-44X-4Y-2C	Switch Engine 33.2	<ul style="list-style-type: none"> <li>Onboard</li> <li>Monitor</li> <li>Template- and device-level configuration</li> <li>SSH Proxy*</li> <li>Supplemental CLI*</li> </ul> <p><b>Note:</b> Pilot license required to configure advanced features.</p>	<ul style="list-style-type: none"> <li>Onboard</li> <li>Monitor</li> <li>Template- and device-level configuration</li> <li>SSH Proxy*</li> <li>Up to 8 unit stacking</li> <li>Ability to toggle universal ports from stacking-support enabled to stacking-support disabled</li> <li>Two QSFP28 uplink ports that can operate at 1x100G, 4x10G, or 4x25G</li> </ul> <p><b>Note:</b> Can only stack with other 5120 devices. Cross stacking between 4000 and 5000 is not supported.</p>
5120-Series-Stack	Switch Engine 33.2	<ul style="list-style-type: none"> <li>Onboard</li> <li>Monitor</li> <li>Template- and device-level configuration</li> <li>SSH Proxy*</li> <li>Supplemental CLI*</li> </ul> <p><b>Note:</b> Pilot license required to configure advanced features.</p>	<ul style="list-style-type: none"> <li>Onboard</li> <li>Monitor</li> <li>Template- and device-level configuration</li> <li>SSH Proxy*</li> <li>Up to 8 unit stacking</li> <li>Ability to toggle universal ports from stacking-support enabled to stacking-support disabled</li> <li>Two QSFP28 uplink ports that can operate at 1x100G, 4x10G, or 4x25G</li> </ul> <p><b>Note:</b> Can only stack with other 5120 devices. Cross stacking between 4000 and 5000 is not supported.</p>

Device Model	Latest Supported Release	Standalone Support	Stack Support
5320-16P-4XE	Switch Engine 33.2 Fabric Engine 9.1.0.1	<ul style="list-style-type: none"> <li>• Monitor</li> <li>• Template- and device-level configuration</li> <li>• SSH Proxy*</li> <li>• Supplemental CLI*</li> </ul>	<b>Switch Engine:</b> <ul style="list-style-type: none"> <li>• Monitor</li> <li>• Template- and device-level configuration</li> <li>• SSH Proxy</li> </ul> <b>Note:</b> Cross stacking between 4000 and 5000 is not supported.
5320-16P-4XE-DC	Switch Engine 33.2 Fabric Engine 9.1.0.1	<ul style="list-style-type: none"> <li>• Monitor</li> <li>• Template- and device-level configuration</li> <li>• SSH Proxy*</li> <li>• Supplemental CLI*</li> </ul>	<b>Switch Engine:</b> <ul style="list-style-type: none"> <li>• Monitor</li> <li>• Template- and device-level configuration</li> <li>• SSH Proxy</li> </ul> <b>Note:</b> Cross stacking between 4000 and 5000 is not supported.
5320-24T-8XE	Switch Engine 33.2 Fabric Engine 9.1.0.1	<ul style="list-style-type: none"> <li>• Monitor</li> <li>• Template- and device-level configuration</li> <li>• SSH Proxy*</li> <li>• Supplemental CLI*</li> </ul>	<ul style="list-style-type: none"> <li>• Monitor</li> <li>• Template- and device-level configuration</li> <li>• SSH Proxy</li> </ul> <b>Note:</b> Cross stacking between 4000 and 5000 is not supported.
5320-24P-8XE	Switch Engine 33.2 Fabric Engine 9.1.0.1	<ul style="list-style-type: none"> <li>• Monitor</li> <li>• Template- and device-level configuration</li> <li>• SSH Proxy*</li> <li>• Supplemental CLI*</li> </ul>	<ul style="list-style-type: none"> <li>• Monitor</li> <li>• Template- and device-level configuration</li> <li>• SSH Proxy</li> </ul> <b>Note:</b> Cross stacking between 4000 and 5000 is not supported.
5320-48T-8XE	Switch Engine 33.2 Fabric Engine 9.1.0.1	<ul style="list-style-type: none"> <li>• Monitor</li> <li>• Template- and device-level configuration</li> <li>• SSH Proxy*</li> <li>• Supplemental CLI*</li> </ul>	<ul style="list-style-type: none"> <li>• Monitor</li> <li>• Template- and device-level configuration</li> <li>• SSH Proxy</li> </ul> <b>Note:</b> Cross stacking between 4000 and 5000 is not supported.

Device Model	Latest Supported Release	Standalone Support	Stack Support
5320-48P-8XE	Switch Engine 33.2 Fabric Engine 9.1.0.1	<ul style="list-style-type: none"> <li>• Monitor</li> <li>• Template- and device-level configuration</li> <li>• SSH Proxy*</li> <li>• Supplemental CLI*</li> </ul>	<ul style="list-style-type: none"> <li>• Monitor</li> <li>• Template- and device-level configuration</li> <li>• SSH Proxy</li> </ul> <p><b>Note:</b> Cross stacking between 4000 and 5000 is not supported.</p>
5420F-24T-4XE	Switch Engine 33.2 Fabric Engine 9.1.0.1	<ul style="list-style-type: none"> <li>• Monitor</li> <li>• Template- and device-level configuration</li> <li>• SSH Proxy*</li> <li>• Supplemental CLI*</li> </ul>	<ul style="list-style-type: none"> <li>• Monitor</li> <li>• Template- and device-level configuration</li> <li>• SSH Proxy</li> </ul> <p><b>Note:</b> Cross stacking between 4000 and 5000 is not supported.</p>
5420F-24P-4XE	Switch Engine 33.2 Fabric Engine 9.1.0.1	<ul style="list-style-type: none"> <li>• Monitor</li> <li>• Template- and device-level configuration</li> <li>• SSH Proxy*</li> <li>• Supplemental CLI*</li> </ul>	<ul style="list-style-type: none"> <li>• Monitor</li> <li>• Template- and device-level configuration</li> <li>• SSH Proxy</li> </ul> <p><b>Note:</b> Cross stacking between 4000 and 5000 is not supported.</p>
5420F-24S-4XE	Switch Engine 33.2 Fabric Engine 9.1.0.1	<ul style="list-style-type: none"> <li>• Monitor</li> <li>• Template- and device-level configuration</li> <li>• SSH Proxy*</li> <li>• Supplemental CLI*</li> </ul>	<ul style="list-style-type: none"> <li>• Monitor</li> <li>• Template- and device-level configuration</li> <li>• SSH Proxy</li> </ul> <p><b>Note:</b> Cross stacking between 4000 and 5000 is not supported.</p>
5420F-48T-4XE	Switch Engine 33.2 Fabric Engine 9.1.0.1	<ul style="list-style-type: none"> <li>• Monitor</li> <li>• Template- and device-level configuration</li> <li>• SSH Proxy*</li> <li>• Supplemental CLI*</li> </ul>	<ul style="list-style-type: none"> <li>• Monitor</li> <li>• Template- and device-level configuration</li> <li>• SSH Proxy</li> </ul> <p><b>Note:</b> Cross stacking between 4000 and 5000 is not supported.</p>

Device Model	Latest Supported Release	Standalone Support	Stack Support
5420F-48P-4XE	Switch Engine 33.2 Fabric Engine 9.1.0.1	<ul style="list-style-type: none"> <li>• Monitor</li> <li>• Template- and device-level configuration</li> <li>• SSH Proxy*</li> <li>• Supplemental CLI*</li> </ul>	<ul style="list-style-type: none"> <li>• Monitor</li> <li>• Template- and device-level configuration</li> <li>• SSH Proxy</li> </ul> <p><b>Note:</b> Cross stacking between 4000 and 5000 is not supported.</p>
5420F-48P-4XL	Switch Engine 33.2 Fabric Engine 9.1.0.1	<ul style="list-style-type: none"> <li>• Monitor</li> <li>• Template- and device-level configuration</li> <li>• SSH Proxy*</li> <li>• Supplemental CLI*</li> </ul>	<ul style="list-style-type: none"> <li>• Monitor</li> <li>• Template- and device-level configuration</li> <li>• SSH Proxy</li> </ul>
5420F-8W-16P-4XE	Switch Engine 33.2 Fabric Engine 9.1.0.1	<ul style="list-style-type: none"> <li>• Monitor</li> <li>• Template- and device-level configuration</li> <li>• SSH Proxy*</li> <li>• Supplemental CLI*</li> </ul>	<ul style="list-style-type: none"> <li>• Monitor</li> <li>• Template- and device-level configuration</li> <li>• SSH Proxy</li> </ul> <p><b>Note:</b> Cross stacking between 4000 and 5000 is not supported.</p>
5420F-16W-32P-4XE	Switch Engine 33.2 Fabric Engine 9.1.0.1	<ul style="list-style-type: none"> <li>• Monitor</li> <li>• Template- and device-level configuration</li> <li>• SSH Proxy*</li> <li>• Supplemental CLI*</li> </ul>	<ul style="list-style-type: none"> <li>• Monitor</li> <li>• Template- and device-level configuration</li> <li>• SSH Proxy</li> </ul> <p><b>Note:</b> Cross stacking between 4000 and 5000 is not supported.</p>
5420F-16MW-32P-4XE	Switch Engine 33.2 Fabric Engine 9.1.0.1	<ul style="list-style-type: none"> <li>• Monitor</li> <li>• Template- and device-level configuration</li> <li>• SSH Proxy*</li> <li>• Supplemental CLI*</li> </ul>	<ul style="list-style-type: none"> <li>• Monitor</li> <li>• Template- and device-level configuration</li> <li>• SSH Proxy</li> </ul> <p><b>Note:</b> Cross stacking between 4000 and 5000 is not supported.</p>

Device Model	Latest Supported Release	Standalone Support	Stack Support
5420M-24T-4YE	Switch Engine 33.2 Fabric Engine 9.1.0.1	<ul style="list-style-type: none"> <li>• Monitor</li> <li>• Template- and device-level configuration</li> <li>• SSH Proxy*</li> <li>• Supplemental CLI*</li> </ul>	<ul style="list-style-type: none"> <li>• Monitor</li> <li>• Template- and device-level configuration</li> <li>• SSH Proxy</li> </ul> <p><b>Note:</b> Cross stacking between 4000 and 5000 is not supported.</p>
5420M-24W-4YE	Switch Engine 33.2 Fabric Engine 9.1.0.1	<ul style="list-style-type: none"> <li>• Monitor</li> <li>• Template- and device-level configuration</li> <li>• SSH Proxy*</li> <li>• Supplemental CLI*</li> </ul>	<ul style="list-style-type: none"> <li>• Monitor</li> <li>• Template- and device-level configuration</li> <li>• SSH Proxy</li> </ul> <p><b>Note:</b> Cross stacking between 4000 and 5000 is not supported.</p>
5420M-48T-4YE	Switch Engine 33.2 Fabric Engine 9.1.0.1	<ul style="list-style-type: none"> <li>• Monitor</li> <li>• Template- and device-level configuration</li> <li>• SSH Proxy*</li> <li>• Supplemental CLI*</li> </ul>	<ul style="list-style-type: none"> <li>• Monitor</li> <li>• Template- and device-level configuration</li> <li>• SSH Proxy</li> </ul> <p><b>Note:</b> Cross stacking between 4000 and 5000 is not supported.</p>
5420M-48W-4YE	Switch Engine 33.2 Fabric Engine 9.1.0.1	<ul style="list-style-type: none"> <li>• Monitor</li> <li>• Template- and device-level configuration</li> <li>• SSH Proxy*</li> <li>• Supplemental CLI*</li> </ul>	<ul style="list-style-type: none"> <li>• Monitor</li> <li>• Template- and device-level configuration</li> <li>• SSH Proxy</li> </ul> <p><b>Note:</b> Cross stacking between 4000 and 5000 is not supported.</p>
5420M-16MW-32P-4YE	Switch Engine 33.2 Fabric Engine 9.1.0.1	<ul style="list-style-type: none"> <li>• Monitor</li> <li>• Template- and device-level configuration</li> <li>• SSH Proxy*</li> <li>• Supplemental CLI*</li> </ul>	<ul style="list-style-type: none"> <li>• Monitor</li> <li>• Template- and device-level configuration</li> <li>• SSH Proxy</li> </ul> <p><b>Note:</b> Cross stacking between 4000 and 5000 is not supported.</p>

Device Model	Latest Supported Release	Standalone Support	Stack Support
5520-24W	Switch Engine 33.2 Fabric Engine 9.1.0.1	<ul style="list-style-type: none"> <li>Monitor</li> <li>Template- and device-level configuration</li> <li>SSH Proxy*</li> <li>Supplemental CLI*</li> </ul>	<ul style="list-style-type: none"> <li>Monitor</li> <li>Template- and device-level configuration</li> <li>SSH Proxy</li> </ul> <p><b>Note:</b> Cross stacking between 4000 and 5000 is not supported.</p>
5520-24T	Switch Engine 33.2 Fabric Engine 9.1.0.1	<ul style="list-style-type: none"> <li>Monitor</li> <li>Template- and device-level configuration</li> <li>SSH Proxy*</li> <li>Supplemental CLI*</li> </ul>	<ul style="list-style-type: none"> <li>Monitor</li> <li>Template- and device-level configuration</li> <li>SSH Proxy</li> </ul> <p><b>Note:</b> Cross stacking between 4000 and 5000 is not supported.</p>
5520-24T-ACDC	Switch Engine 33.2 Fabric Engine 9.1.0.1	<ul style="list-style-type: none"> <li>Monitor</li> <li>Template- and device-level configuration</li> <li>SSH Proxy*</li> <li>Supplemental CLI*</li> </ul>	<p><b>Switch Engine:</b></p> <ul style="list-style-type: none"> <li>Monitor</li> <li>Template- and device-level configuration</li> <li>SSH Proxy</li> </ul> <p><b>Note:</b> Cross stacking between 4000 and 5000 is not supported.</p>
5520-24X-ACDC	Switch Engine 33.2 Fabric Engine 9.1.0.1	<ul style="list-style-type: none"> <li>Monitor</li> <li>Template- and device-level configuration</li> <li>SSH Proxy*</li> <li>Supplemental CLI*</li> </ul>	<p><b>Switch Engine:</b></p> <ul style="list-style-type: none"> <li>Monitor</li> <li>Template- and device-level configuration</li> <li>SSH Proxy</li> </ul> <p><b>Note:</b> Cross stacking between 4000 and 5000 is not supported.</p>
5520-48W	Switch Engine 33.2 Fabric Engine 9.1.0.1	<ul style="list-style-type: none"> <li>Monitor</li> <li>Template- and device-level configuration</li> <li>SSH Proxy*</li> <li>Supplemental CLI*</li> </ul>	<ul style="list-style-type: none"> <li>Monitor</li> <li>Template- and device-level configuration</li> <li>SSH Proxy</li> </ul> <p><b>Note:</b> Cross stacking between 4000 and 5000 is not supported.</p>

Device Model	Latest Supported Release	Standalone Support	Stack Support
5520-48T	Switch Engine 33.2 Fabric Engine 9.1.0.1	<ul style="list-style-type: none"> <li>• Monitor</li> <li>• Template- and device-level configuration</li> <li>• SSH Proxy*</li> <li>• Supplemental CLI*</li> </ul>	<ul style="list-style-type: none"> <li>• Monitor</li> <li>• Template- and device-level configuration</li> <li>• SSH Proxy</li> </ul> <p><b>Note:</b> Cross stacking between 4000 and 5000 is not supported.</p>
5520-48T-ACDC	Switch Engine 33.2 Fabric Engine 9.1.0.1	<ul style="list-style-type: none"> <li>• Monitor</li> <li>• Template- and device-level configuration</li> <li>• SSH Proxy*</li> <li>• Supplemental CLI*</li> </ul>	<ul style="list-style-type: none"> <li>• Monitor</li> <li>• Template- and device-level configuration</li> <li>• SSH Proxy</li> </ul> <p><b>Note:</b> Cross stacking between 4000 and 5000 is not supported.</p>
5520-12MW-36W	Switch Engine 33.2 Fabric Engine 9.1.0.1	<ul style="list-style-type: none"> <li>• Monitor</li> <li>• Template- and device-level configuration</li> <li>• SSH Proxy*</li> <li>• Supplemental CLI*</li> </ul>	<ul style="list-style-type: none"> <li>• Monitor</li> <li>• Template- and device-level configuration</li> <li>• SSH Proxy</li> </ul> <p><b>Note:</b> Cross stacking between 4000 and 5000 is not supported.</p>
5520-48SE	Switch Engine 33.2 Fabric Engine 9.1.0.1	<ul style="list-style-type: none"> <li>• Monitor</li> <li>• Template- and device-level configuration</li> <li>• SSH Proxy*</li> <li>• Supplemental CLI*</li> </ul>	<ul style="list-style-type: none"> <li>• Monitor</li> <li>• Template- and device-level configuration</li> <li>• SSH Proxy</li> </ul> <p><b>Note:</b> Cross stacking between 4000 and 5000 is not supported.</p>
5520-48SE-ACDC	Switch Engine 33.2 Fabric Engine 9.1.0.1	<ul style="list-style-type: none"> <li>• Monitor</li> <li>• Template- and device-level configuration</li> <li>• SSH Proxy*</li> <li>• Supplemental CLI*</li> </ul>	<ul style="list-style-type: none"> <li>• Monitor</li> <li>• Template- and device-level configuration</li> <li>• SSH Proxy</li> </ul> <p><b>Note:</b> Cross stacking between 4000 and 5000 is not supported.</p>

Device Model	Latest Supported Release	Standalone Support	Stack Support
5520-24X	Switch Engine 33.2 Fabric Engine 9.1.0.1	<ul style="list-style-type: none"> <li>• Monitor</li> <li>• Template- and device-level configuration</li> <li>• SSH Proxy*</li> <li>• Supplemental CLI*</li> </ul>	<b>Switch Engine:</b> <ul style="list-style-type: none"> <li>• Monitor</li> <li>• Template- and device-level configuration</li> <li>• SSH Proxy</li> </ul> <b>Note:</b> Cross stacking between 4000 and 5000 is not supported.
5720-24MW	Switch Engine 33.2 Fabric Engine 9.1.0.1	<ul style="list-style-type: none"> <li>• Monitor</li> <li>• Template- and device-level configuration</li> <li>• SSH Proxy*</li> <li>• Supplemental CLI*</li> </ul>	<b>Switch Engine:</b> <ul style="list-style-type: none"> <li>• Monitor</li> <li>• Template- and device-level configuration</li> <li>• SSH Proxy</li> </ul> <b>Note:</b> Cross stacking between 4000 and 5000 is not supported.
5720-48MW	Switch Engine 33.2 Fabric Engine 9.1.0.1	<ul style="list-style-type: none"> <li>• Monitor</li> <li>• Template- and device-level configuration</li> <li>• SSH Proxy*</li> <li>• Supplemental CLI*</li> </ul>	<b>Switch Engine:</b> <ul style="list-style-type: none"> <li>• Monitor</li> <li>• Template- and device-level configuration</li> <li>• SSH Proxy</li> </ul> <b>Note:</b> Cross stacking between 4000 and 5000 is not supported.
5720-24MXW	Switch Engine 33.2 Fabric Engine 9.1.0.1	<ul style="list-style-type: none"> <li>• Monitor</li> <li>• Template- and device-level configuration</li> <li>• SSH Proxy*</li> <li>• Supplemental CLI*</li> </ul>	<b>Switch Engine:</b> <ul style="list-style-type: none"> <li>• Monitor</li> <li>• Template- and device-level configuration</li> <li>• SSH Proxy</li> </ul> <b>Note:</b> Cross stacking between 4000 and 5000 is not supported.



Device Model	Latest Supported Release	Standalone Support	Stack Support
5720-48MXW	Switch Engine 33.2 Fabric Engine 9.1.0.1	<ul style="list-style-type: none"> <li>Monitor</li> <li>Template- and device-level configuration</li> <li>SSH Proxy*</li> <li>Supplemental CLI*</li> </ul>	<b>Switch Engine:</b> <ul style="list-style-type: none"> <li>Monitor</li> <li>Template- and device-level configuration</li> <li>SSH Proxy</li> </ul> <b>Note:</b> Cross stacking between 4000 and 5000 is not supported.
7520-48Y	Switch Engine 33.2 Fabric Engine 9.1.0.1	<b>Switch Engine:</b> <ul style="list-style-type: none"> <li>Monitor</li> <li>Template- and device-level configuration</li> <li>SSH Proxy*</li> <li>Supplemental CLI*</li> </ul> <b>Fabric Engine:</b> Monitor	<b>Switch Engine:</b> <ul style="list-style-type: none"> <li>Monitor</li> <li>Template- and device-level configuration</li> <li>SSH Proxy</li> </ul> <b>Note:</b> Cross stacking between 4000 and 5000 is not supported.
7520-48YE	Switch Engine 33.2 Fabric Engine 9.1.0.1	<b>Switch Engine:</b> <ul style="list-style-type: none"> <li>Monitor</li> <li>Template- and device-level configuration</li> <li>SSH Proxy*</li> <li>Supplemental CLI*</li> </ul> <b>Fabric Engine:</b> Monitor	<b>Switch Engine:</b> <ul style="list-style-type: none"> <li>Monitor</li> <li>Template- and device-level configuration</li> <li>SSH Proxy</li> </ul> <b>Note:</b> Cross stacking between 4000 and 5000 is not supported.

Device Model	Latest Supported Release	Standalone Support	Stack Support
7520-48XT	Switch Engine 33.2 Fabric Engine 9.1.0.1	<b>Switch Engine:</b> <ul style="list-style-type: none"> <li>Monitor</li> <li>Template- and device-level configuration</li> <li>SSH Proxy*</li> <li>Supplemental CLI*</li> </ul> <b>Fabric Engine:</b> Monitor	<b>Switch Engine:</b> <ul style="list-style-type: none"> <li>Monitor</li> <li>Template- and device-level configuration</li> <li>SSH Proxy</li> </ul> <b>Note:</b> Cross stacking between 4000 and 5000 is not supported.
7720-32c	Switch Engine 33.2 Fabric Engine 9.1.0.1	<b>Switch Engine:</b> <ul style="list-style-type: none"> <li>Monitor</li> <li>Template- and device-level configuration</li> <li>SSH Proxy*</li> <li>Supplemental CLI*</li> </ul> <b>Fabric Engine:</b> Monitor	<b>Switch Engine:</b> <ul style="list-style-type: none"> <li>Monitor</li> <li>Template- and device-level configuration</li> <li>SSH Proxy</li> </ul> <b>Note:</b> Cross stacking between 4000 and 5000 is not supported.

**Note**

\* SSH Proxy and Supplemental CLI can be used for configuring additional parameters not currently available within template or device-level configurations.

## ExtremeXOS

Device Model	Latest Supported Release	Standalone Support	Stack Support
X435-8P-2T-W	ExtremeXOS 33.2	<ul style="list-style-type: none"> <li>Monitor</li> <li>Template- and device-level configuration</li> <li>SSH Proxy*</li> <li>Supplemental CLI*</li> </ul>	N/A
X435-24T-4S	ExtremeXOS 33.2	<ul style="list-style-type: none"> <li>Monitor</li> <li>Template- and device-level configuration</li> <li>SSH Proxy*</li> <li>Supplemental CLI*</li> </ul>	N/A

Device Model	Latest Supported Release	Standalone Support	Stack Support
X435-24P-4S	ExtremeXOS 33.2	<ul style="list-style-type: none"> <li>• Monitor</li> <li>• Template- and device-level configuration</li> <li>• SSH Proxy*</li> <li>• Supplemental CLI*</li> </ul>	N/A
X435-8T-4S	ExtremeXOS 33.2	<ul style="list-style-type: none"> <li>• Monitor</li> <li>• Template- and device-level configuration</li> <li>• SSH Proxy*</li> <li>• Supplemental CLI*</li> </ul>	N/A
X435-8P-4S	ExtremeXOS 33.2	<ul style="list-style-type: none"> <li>• Monitor</li> <li>• Template- and device-level configuration</li> <li>• SSH Proxy*</li> <li>• Supplemental CLI*</li> </ul>	N/A
X440-G2-12p-10GE4	ExtremeXOS 33.2	<ul style="list-style-type: none"> <li>• Monitor</li> <li>• Template- and device-level configuration</li> <li>• SSH Proxy*</li> <li>• Supplemental CLI*</li> </ul>	<ul style="list-style-type: none"> <li>• Monitor</li> <li>• Template- and device-level configuration</li> <li>• SSH Proxy*</li> <li>• Supplemental CLI*</li> </ul>
X440-G2-12t-10GE4	ExtremeXOS 33.2	<ul style="list-style-type: none"> <li>• Monitor</li> <li>• Template- and device-level configuration</li> <li>• SSH Proxy*</li> <li>• Supplemental CLI*</li> </ul>	<ul style="list-style-type: none"> <li>• Monitor</li> <li>• Template- and device-level configuration</li> <li>• SSH Proxy*</li> <li>• Supplemental CLI*</li> </ul>
X440-G2-24p-10GE4	ExtremeXOS 33.2	<ul style="list-style-type: none"> <li>• Monitor</li> <li>• Template- and device-level configuration</li> <li>• SSH Proxy*</li> <li>• Supplemental CLI*</li> </ul>	<ul style="list-style-type: none"> <li>• Monitor</li> <li>• Template- and device-level configuration</li> <li>• SSH Proxy*</li> <li>• Supplemental CLI*</li> </ul>
X440-G2-24t-10GE4	ExtremeXOS 33.2	<ul style="list-style-type: none"> <li>• Monitor</li> <li>• Template- and device-level configuration</li> <li>• SSH Proxy*</li> <li>• Supplemental CLI*</li> </ul>	<ul style="list-style-type: none"> <li>• Monitor</li> <li>• Template- and device-level configuration</li> <li>• SSH Proxy*</li> <li>• Supplemental CLI*</li> </ul>

Device Model	Latest Supported Release	Standalone Support	Stack Support
X440-G2-48p-10GE4	ExtremeXOS 33.2	<ul style="list-style-type: none"> <li>• Monitor</li> <li>• Template- and device-level configuration</li> <li>• SSH Proxy*</li> <li>• Supplemental CLI*</li> </ul>	<ul style="list-style-type: none"> <li>• Monitor</li> <li>• Template- and device-level configuration</li> <li>• SSH Proxy*</li> <li>• Supplemental CLI*</li> </ul>
X440-G2-48t-10GE4	ExtremeXOS 33.2	<ul style="list-style-type: none"> <li>• Monitor</li> <li>• Template- and device-level configuration</li> <li>• SSH Proxy*</li> <li>• Supplemental CLI*</li> </ul>	<ul style="list-style-type: none"> <li>• Monitor</li> <li>• Template- and device-level configuration</li> <li>• SSH Proxy*</li> <li>• Supplemental CLI*</li> </ul>
X450-G2-24p-GE4	ExtremeXOS 33.2	<ul style="list-style-type: none"> <li>• Monitor</li> <li>• Template- and device-level configuration</li> <li>• SSH Proxy*</li> <li>• Supplemental CLI*</li> </ul>	Monitor
X450-G2-24p-10GE4	ExtremeXOS 33.2	<ul style="list-style-type: none"> <li>• Monitor</li> <li>• Template- and device-level configuration</li> <li>• SSH Proxy*</li> <li>• Supplemental CLI*</li> </ul>	Monitor
X450-G2-48p-10GE4	ExtremeXOS 33.2	<ul style="list-style-type: none"> <li>• Monitor</li> <li>• Template- and device-level configuration</li> <li>• SSH Proxy*</li> <li>• Supplemental CLI*</li> </ul>	Monitor
X460-G2-16mp-32p-10GE4	ExtremeXOS 33.2	<ul style="list-style-type: none"> <li>• Monitor</li> <li>• Template- and device-level configuration</li> <li>• SSH Proxy*</li> <li>• S</li> </ul>	Monitor
X460-G2-24p-10GE4	ExtremeXOS 33.2	<ul style="list-style-type: none"> <li>• Monitor</li> <li>• Template- and device-level configuration</li> <li>• SSH Proxy*</li> <li>• Supplemental CLI*</li> </ul>	Monitor

Device Model	Latest Supported Release	Standalone Support	Stack Support
X460-G2-24p-GE4	ExtremeXOS 33.2	<ul style="list-style-type: none"> <li>• Monitor</li> <li>• Template- and device-level configuration</li> <li>• SSH Proxy*</li> <li>• S</li> </ul>	Monitor
X460-G2-24p-24hp-10GE4	ExtremeXOS 33.2	<ul style="list-style-type: none"> <li>• Monitor</li> <li>• Template- and device-level configuration</li> <li>• SSH Proxy*</li> <li>• Supplemental CLI*</li> </ul>	Monitor
X460-G2-24t-10GE4	ExtremeXOS 33.2	<ul style="list-style-type: none"> <li>• Monitor</li> <li>• Template- and device-level configuration</li> <li>• SSH Proxy*</li> <li>• Supplemental CLI*</li> </ul>	Monitor
X460-G2-24t-GE4	ExtremeXOS 33.2	<ul style="list-style-type: none"> <li>• Monitor</li> <li>• Template- and device-level configuration</li> <li>• SSH Proxy*</li> <li>• Supplemental CLI*</li> </ul>	Monitor
X460-G2-24t-24ht-10GE4	ExtremeXOS 33.2	<ul style="list-style-type: none"> <li>• Monitor</li> <li>• Template- and device-level configuration</li> <li>• SSH Proxy*</li> <li>• Supplemental CLI*</li> </ul>	Monitor
X460-G2-24x-10GE4	ExtremeXOS 33.2	<ul style="list-style-type: none"> <li>• Monitor</li> <li>• Template- and device-level configuration</li> <li>• SSH Proxy*</li> <li>• Supplemental CLI*</li> </ul>	Monitor
X460-G2-48p-10GE4	ExtremeXOS 33.2	<ul style="list-style-type: none"> <li>• Monitor</li> <li>• Template- and device-level configuration</li> <li>• SSH Proxy*</li> <li>• Supplemental CLI*</li> </ul>	Monitor
X460-G2-48t-10GE4	ExtremeXOS 33.2	<ul style="list-style-type: none"> <li>• Monitor</li> <li>• Template- and device-level configuration</li> <li>• SSH Proxy*</li> <li>• Supplemental CLI*</li> </ul>	Monitor

Device Model	Latest Supported Release	Standalone Support	Stack Support
X460-G2-48t-GE4	ExtremeXOS 33.2	<ul style="list-style-type: none"> <li>• Monitor</li> <li>• Template- and device-level configuration</li> <li>• SSH Proxy*</li> <li>• Supplemental CLI*</li> </ul>	Monitor
X460-G2-48x-10GE4	ExtremeXOS 33.2	<ul style="list-style-type: none"> <li>• Monitor</li> <li>• Template- and device-level configuration</li> <li>• SSH Proxy*</li> <li>• Supplemental CLI*</li> </ul>	Monitor
X465-24W	ExtremeXOS 33.2	<ul style="list-style-type: none"> <li>• Monitor</li> <li>• Template- and device-level configuration</li> <li>• SSH Proxy*</li> <li>• Supplemental CLI*</li> </ul>	Monitor
X465-48W	ExtremeXOS 33.2	<ul style="list-style-type: none"> <li>• Monitor</li> <li>• Template- and device-level configuration</li> <li>• SSH Proxy*</li> <li>• Supplemental CLI*</li> </ul>	Monitor
X465-24MU	ExtremeXOS 33.2	<ul style="list-style-type: none"> <li>• Monitor</li> <li>• Template- and device-level configuration</li> <li>• SSH Proxy*</li> <li>• Supplemental CLI*</li> </ul>	Monitor
X465-48P	ExtremeXOS 33.2	<ul style="list-style-type: none"> <li>• Monitor</li> <li>• Template- and device-level configuration</li> <li>• SSH Proxy*</li> <li>• Supplemental CLI*</li> </ul>	Monitor
X465-24MU-24W	ExtremeXOS 33.2	<ul style="list-style-type: none"> <li>• Monitor</li> <li>• Template- and device-level configuration</li> <li>• SSH Proxy*</li> <li>• Supplemental CLI*</li> </ul>	Monitor

**Note**

\* SSH Proxy and Supplemental CLI can be used for configuring additional parameters not currently available within template or device-level configurations.

## IQ Engine (Cloud Native)

Device Model	Latest Supported Release
SR2024 <a href="#">End of Life</a>	IQ Engine 6.5.12
SR2024P <a href="#">End of Life</a>	IQ Engine 6.5.12
SR2124P <a href="#">End of Life</a>	IQ Engine 6.5.12
SR2148P <a href="#">End of Life</a>	IQ Engine 6.5.12
SR2208P <a href="#">End of Life</a>	FASTPATH 9.2.1.20 v1.0.1.29 ExtremeCloud IQ Agent 1.1.31
SR2224P <a href="#">End of Life</a>	FASTPATH 9.2.1.20 v1.0.1.29 ExtremeCloud IQ Agent 1.1.31
SR2324P <a href="#">End of Life</a>	FASTPATH 9.2.1.20 v1.0.1.29 ExtremeCloud IQ Agent 1.1.31
SR2348P <a href="#">End of Life</a>	FASTPATH 9.2.1.20 v1.0.1.29 ExtremeCloud IQ Agent 1.1.31

## VOSS

Device Model	Latest Supported Release	Standalone Support	Stack Support
VSP7432CQ	VOSS 9.1.0.1	<ul style="list-style-type: none"> <li>• Monitor</li> <li>• Template- and device-level configuration</li> <li>• SSH Proxy*</li> <li>• Supplemental CLI*</li> </ul>	Not supported
VSP7400-48Y	VOSS 9.1.0.1	<ul style="list-style-type: none"> <li>• Monitor</li> <li>• Template- and device-level configuration</li> <li>• SSH Proxy*</li> <li>• Supplemental CLI*</li> </ul>	Not supported
VSP4900-48P	VOSS 9.1.0.1	<ul style="list-style-type: none"> <li>• Monitor</li> <li>• Template- and device-level configuration</li> <li>• SSH Proxy*</li> <li>• Supplemental CLI*</li> </ul>	Not supported

Device Model	Latest Supported Release	Standalone Support	Stack Support
VSP4900-24XE	VOSS 9.1.0.1	<ul style="list-style-type: none"> <li>• Monitor</li> <li>• Template- and device-level configuration</li> <li>• SSH Proxy*</li> <li>• Supplemental CLI*</li> </ul>	Not supported
VSP4900-24S	VOSS 9.1.0.1	<ul style="list-style-type: none"> <li>• Monitor</li> <li>• Template- and device-level configuration</li> <li>• SSH Proxy*</li> <li>• Supplemental CLI*</li> </ul>	Not supported
VSP4900-12MXU-12XE	VOSS 9.1.0.1	<ul style="list-style-type: none"> <li>• Monitor</li> <li>• Template- and device-level configuration</li> <li>• SSH Proxy*</li> <li>• Supplemental CLI*</li> </ul>	Not supported
XA1480	VOSS 8.10	<ul style="list-style-type: none"> <li>• Monitor</li> <li>• Template- and device-level configuration</li> <li>• SSH Proxy*</li> <li>• Supplemental CLI*</li> </ul>	Not supported
XA1440	VOSS 8.10	<ul style="list-style-type: none"> <li>• Monitor</li> <li>• Template- and device-level configuration</li> <li>• SSH Proxy*</li> <li>• Supplemental CLI*</li> </ul>	Not supported

**Note**

\* SSH Proxy and Supplemental CLI can be used for configuring additional parameters not currently available within template or device-level configurations.

## Dell EMC

Device Model	Latest Supported Release
N3132PX	IQAgent 1.1.29
N3024EF	IQAgent 1.1.29
N3024EP	IQAgent 1.1.29
N3024ET	IQAgent 1.1.29
N3048EP	IQAgent 1.1.29
N3048ET	IQAgent 1.1.29



Device Model	Latest Supported Release
N3024	IQAgent 1.1.29
N3024F	IQAgent 1.1.29
N3024P	IQAgent 1.1.29
N3048	IQAgent 1.1.29
N3048P	IQAgent 1.1.29
N2128PX	IQAgent 1.1.29
N2024	IQAgent 1.1.29
N2024P	IQAgent 1.1.29
N2048	IQAgent 1.1.29
N2048P	IQAgent 1.1.29
N1524	IQAgent 1.1.29
N1524P	IQAgent 1.1.29
N1548	IQAgent 1.1.29
N1548P	IQAgent 1.1.29
N1108T-ON	IQAgent 1.1.29
N1108P-ON	IQAgent 1.1.29
N1124T-ON	IQAgent 1.1.29
N1124P-ON	IQAgent 1.1.29
N1148T-ON	IQAgent 1.1.29
N1148P-ON	IQAgent 1.1.29

## Routers

Device Model	Latest Supported Release	Standalone Support
XR200P	IQ Engine 6.9.7	Platform support introduced with IQ Engine 6.9.2
XR600	IQ Engine 10.0.11	Platform support introduced with IQ Engine 9.0.1
XR600P	IQ Engine 10.0.11	Platform support introduced with IQ Engine 9.0.1
VGVA	IQ Engine 6.9.7	

## ExtremeCloud IQ Site Engine

ExtremeCloud IQ Site Engine Version	Supported Features
24.07.11	<ul style="list-style-type: none"> <li>• License allocation</li> <li>• Device Assignment to the ExtremeCloud IQ Location</li> <li>• Device Statistics</li> <li>• Port Statistics</li> <li>• Unmanage/Manage device</li> <li>• Device Group to CCG mapping</li> <li>• Open Site Engine with SSO</li> <li>• Stack members</li> <li>• NAC details update for wireless end-systems</li> <li>• Wired end-systems reported to ExtremeCloud IQ</li> </ul>
24.10.10	<ul style="list-style-type: none"> <li>• License allocation</li> <li>• Device Assignment to the ExtremeCloud IQ Location</li> <li>• Device Statistics</li> <li>• Port Statistics</li> <li>• Unmanage/Manage device</li> <li>• Device Group to CCG mapping</li> <li>• Open Site Engine with SSO</li> <li>• Stack members</li> <li>• NAC details update for wireless end-systems</li> <li>• Wired end-systems reported to ExtremeCloud IQ</li> </ul>
24.10.11	<ul style="list-style-type: none"> <li>• License allocation</li> <li>• Device Assignment to the ExtremeCloud IQ</li> <li>• Device Statistics</li> <li>• Port Statistics</li> <li>• Unmanage/Manage device</li> <li>• Device Group to CCG mapping</li> <li>• Open Site Engine with SSO</li> <li>• Stack members</li> <li>• NAC details update for wireless end-systems</li> <li>• Wired end-systems reported to ExtremeCloud IQ</li> </ul>
24.10.12	<ul style="list-style-type: none"> <li>• License allocation</li> <li>• Device Assignment to the ExtremeCloud IQ</li> <li>• Device Statistics</li> <li>• Port Statistics</li> <li>• Unmanage/Manage device</li> <li>• Device Group to CCG mapping</li> <li>• Open Site Engine with SSO</li> <li>• Stack members</li> <li>• NAC details update for wireless end-systems</li> <li>• Wired end-systems reported to ExtremeCloud IQ</li> </ul>

ExtremeCloud IQ Site Engine Version	Supported Features
24.10.13	<ul style="list-style-type: none"><li>• License allocation</li><li>• Device Assignment to the ExtremeCloud IQ</li><li>• Device Statistics</li><li>• Port Statistics</li><li>• Unmanage/Manage device</li><li>• Device Group to CCG mapping</li><li>• Open Site Engine with SSO</li><li>• Stack members</li><li>• NAC details update for wireless end-systems</li><li>• Wired end-systems reported to ExtremeCloud IQ</li></ul>
25.2.10	<ul style="list-style-type: none"><li>• License allocation</li><li>• Device Assignment to the ExtremeCloud IQ</li><li>• Device Statistics</li><li>• Port Statistics</li><li>• Unmanage/Manage device</li><li>• Device Group to CCG mapping</li><li>• Open Site Engine with SSO</li><li>• Stack members</li><li>• NAC details update for wireless end-systems</li><li>• Wired end-systems reported to ExtremeCloud IQ</li><li>• Detect and report orphaned devices</li><li>• Compatible with Extreme Platform ONE subscriptions</li></ul>
25.2.11	<ul style="list-style-type: none"><li>• License allocation</li><li>• Device Assignment to the ExtremeCloud IQ</li><li>• Device Statistics</li><li>• Port Statistics</li><li>• Unmanage/Manage device</li><li>• Device Group to CCG mapping</li><li>• Open Site Engine with SSO</li><li>• Stack members</li><li>• NAC details update for wireless end-systems</li><li>• Wired end-systems reported to ExtremeCloud IQ</li><li>• Detect and report orphaned devices</li><li>• Compatible with Extreme Platform ONE subscriptions</li></ul>

ExtremeCloud IQ Site Engine Version	Supported Features
25.2.12	<ul style="list-style-type: none"> <li>• License allocation</li> <li>• Device Assignment to the ExtremeCloud IQ</li> <li>• Device Statistics</li> <li>• Port Statistics</li> <li>• Unmanage/Manage device</li> <li>• Device Group to CCG mapping</li> <li>• Open Site Engine with SSO</li> <li>• Stack members</li> <li>• NAC details update for wireless end-systems</li> <li>• Wired end-systems reported to ExtremeCloud IQ</li> <li>• Detect and report orphaned devices</li> <li>• Compatible with Extreme Platform ONE subscriptions</li> </ul>
25.5.10	<ul style="list-style-type: none"> <li>• License allocation</li> <li>• Device Assignment to the ExtremeCloud IQ</li> <li>• Device Statistics</li> <li>• Port Statistics</li> <li>• Unmanage/Manage device</li> <li>• Device Group to CCG mapping</li> <li>• Open Site Engine with SSO</li> <li>• Stack members</li> <li>• NAC details update for wireless end-systems</li> <li>• Wired end-systems reported to ExtremeCloud IQ</li> <li>• Detect and report orphaned devices</li> <li>• Compatible with Extreme Platform ONE subscriptions</li> </ul>
25.5.11	<ul style="list-style-type: none"> <li>• License allocation</li> <li>• Device Assignment to the ExtremeCloud IQ</li> <li>• Device Statistics</li> <li>• Port Statistics</li> <li>• Unmanage/Manage device</li> <li>• Device Group to CCG mapping</li> <li>• Open Site Engine with SSO</li> <li>• Stack members</li> <li>• NAC details update for wireless end-systems</li> <li>• Wired end-systems reported to ExtremeCloud IQ</li> <li>• Detect and report orphaned devices</li> <li>• Compatible with Extreme Platform ONE subscriptions</li> </ul>

ExtremeCloud IQ Site Engine Version	Supported Features
25.5.12	<ul style="list-style-type: none"> <li>• License allocation</li> <li>• Device Assignment to the ExtremeCloud IQ</li> <li>• Device Statistics</li> <li>• Port Statistics</li> <li>• Unmanage/Manage device</li> <li>• Device Group to CCG mapping</li> <li>• Open Site Engine with SSO</li> <li>• Stack members</li> <li>• NAC details update for wireless end-systems</li> <li>• Wired end-systems reported to ExtremeCloud IQ</li> <li>• Detect and report orphaned devices</li> <li>• Compatible with Extreme Platform ONE subscriptions</li> </ul>
25.8.10	<ul style="list-style-type: none"> <li>• License allocation</li> <li>• Device Assignment to the ExtremeCloud IQ</li> <li>• Device Statistics</li> <li>• Port Statistics</li> <li>• Unmanage/Manage device</li> <li>• Device Group to CCG mapping</li> <li>• Open Site Engine with SSO</li> <li>• Stack members</li> <li>• NAC details update for wireless end-systems</li> <li>• Wired end-systems reported to ExtremeCloud IQ</li> <li>• Detect and report orphaned devices</li> <li>• Compatible with Extreme Platform ONE subscriptions</li> </ul>

## ExtremeCloud IQ CoPilot

ExtremeCloud IQ CoPilot Feature	Minimum Firmware				
	IQ Engine	Switch Engine	Fabric Engine	Extreme XOS	VOSS
Wi-Fi Efficiency	10.5.2	—	—	—	—
Wi-Fi Capacity	10.5.2	—	—	—	—
PoE Stability	10.5.2	32.1	8.6	32.1	8.6
Port Efficiency	10.5.2	31.7	8.6	31.7	8.6
DFS Recurrence	10.5.2	—	—	—	—
Adverse Traffic Patterns	10.5.2	31.7	8.6	31.7	8.6
Wireless Connectivity Experience	10.5.2	—	—	—	—
Wired Connectivity Experience	—	31.7	8.6	31.7	8.6

ExtremeCloud IQ CoPilot Feature	Minimum Firmware				
	IQ Engine	Switch Engine	Fabric Engine	Extreme XOS	VOSS
Hardware Health	10.5.2	—	—	—	—
Missing VLAN Detection *	10.7.4	—	—	—	—

\* Supported on AP3000/AP3000X/AP5010/AP5050U/AP5050D

## ExtremeCloud A3

ExtremeCloud A3 Version	Supported Features
5.0.1-4	<ul style="list-style-type: none"> <li>• Licensing</li> <li>• Status Monitoring</li> <li>• SSO</li> <li>• Client Details</li> </ul>

## Supported Browsers and Display Settings

### Desktop and Mobile Browser Support



#### Note

ExtremeCloud IQ does not support 32-bit browsers.

**Table 7: Desktop Browsers**

Desktop Browsers	Version Supported
Chrome	v116
Edge	v115
Firefox	v115
Internet Explorer	Not supported
Opera	v60
Safari	v13

**Table 8: Mobile Browsers**

Mobile Browsers	Version Supported
Android Webview	v73
Chrome for Android	v116
Edge	v79
Firefox for Android	v67
Opera for Android	v52

**Table 8: Mobile Browsers (continued)**

Mobile Browsers	Version Supported
Safari for iOS	v13
Samsung Internet	Not supported

## Display Settings

ExtremeCloud IQ supports display resolutions of 1280 x 1024 or higher.