



ExtremeCloud IQ Release Notes

24.4.0

9038926-03 Rev AB
July 2024



Copyright © 2024 Extreme Networks, Inc. All rights reserved.

Legal Notice

Extreme Networks, Inc. reserves the right to make changes in specifications and other information contained in this document and its website without prior notice. The reader should in all cases consult representatives of Extreme Networks to determine whether any such changes have been made.

The hardware, firmware, software or any specifications described or referred to in this document are subject to change without notice.

Trademarks

Extreme Networks and the Extreme Networks logo are trademarks or registered trademarks of Extreme Networks, Inc. in the United States and/or other countries.

All other names (including any product names) mentioned in this document are the property of their respective owners and may be trademarks or registered trademarks of their respective companies/owners.

For additional information on Extreme Networks trademarks, see: <https://www.extremenetworks.com/about-extreme-networks/company/legal/trademarks>

Open Source Declarations

Some software files have been licensed under certain open source or third-party licenses.

End-user license agreements and open source declarations can be found at: <https://www.extremenetworks.com/support/policies/open-source-declaration/>



Table of Contents

General Release Information.....	4
Current Release: 24.4.0.72.....	4
Essentials Releases.....	4
Release: 24.4.0.72 Addressed Issues.....	4
Release: 24.4.0.69 Addressed Issues.....	5
Release: 24.4.0.65 Addressed Issues.....	5
Release: 24.4.0.64 Addressed Issues.....	5
ExtremeCloud IQ Public IP Address Blocks.....	5
Supported IQ Engine v10.7.1 Software.....	6
Previous Release.....	7
New Features in 24.4.0.61.....	7
Addressed Issues in 24.4.0.61.....	11
Known Issues in 24.4.0.61.....	12
Device Support Information.....	17
Controllers.....	17
Access Points.....	18
Universal Hardware.....	18
IQ Engine (Cloud Native).....	19
ExtremeWireless WiNG.....	20
Extreme Wireless.....	21
Switches.....	22
Universal Hardware.....	23
ExtremeXOS.....	38
VOSS.....	42
IQ Engine (Cloud Native).....	43
Dell EMC.....	44
Routers.....	44
ExtremeCloud IQ Site Engine.....	45
ExtremeCloud IQ CoPilot.....	49
ExtremeCloud A3.....	49
Supported Browsers and Display Settings.....	49
Desktop and Mobile Browser Support.....	49
Display Settings.....	50



General Release Information

Current Release: 24.4.0.72

July 2024

Essentials Releases



Note

There is no dependency on ExtremeCloud IQ or its components for the following Essentials application releases.

Table 1: Addressed Issues in ExtremeGuest Essentials Build 24.4.0.6

Issue ID	Description
CFD-11637 (02962415, 02955616, 02961809, 02956678, 02964493, 02965733, 02965346, 02965469, 2966485, 02967313)	Addressed an issue in ExtremeGuest Essentials where custom splash templates stopped working after an upgrade to 24.4.0. If you were affected, you must restore the templates from a backup. The link to re-direct to landing.html page has been restored.

Table 2: Addressed Issues in ExtremeLocation Essentials Build 24.4.0.3

Issue ID	Description
XESS-1605	Addressed an issue with ExtremeLocation Essentials map loading failure and WIPS unavailable.

Release: 24.4.0.72 Addressed Issues

Table 3: Addressed Issues in Release 24.4.0.72

Issue ID	Description
XCP-1617	When granted external admin permission to access a different UZTNA account, external admins can now access those accounts as expected.

Release: 24.4.0.69 Addressed Issues

Table 4: Addressed Issues in Release 24.4.0.69

Issue ID	Description
CFD-11473 (02943905, 02958241)	The CoPilot license violation banner does not display now after the CoPilot grace period has expired and CoPilot is revoked.
CFD-11520 (02957484, 02956285, 02923982,0295704 1)	The CoPilot license violation banner now displays correctly for Stack devices.
CFD-11619 (02962524, 02965106)	My Apps now displays correct content, even if an unknown license is in the license pool.
XIQ-31308	Corrected an issue when adding external administration accounts.
XIQ-32243	Corrected a notification issue when entering an incorrect password the maximum number of times.

Release: 24.4.0.65 Addressed Issues

This release of ExtremeCloud IQ includes improvements to support IoT profiles. IoT profiles have been enhanced to show SINGLE and MULTI app_supported fields.

Release: 24.4.0.64 Addressed Issues

This release of ExtremeCloud IQ includes improvements to support access to Client360.

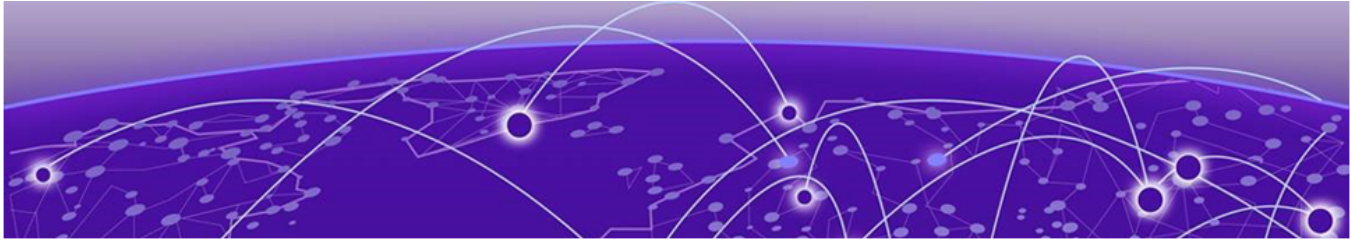
ExtremeCloud IQ Public IP Address Blocks

Data Center	IP Block	Addresses and Ports
Global Data Center (GDC)	44.234.22.92/30 18.194.95.0/28 34.253.190.192/26 3.234.248.0/27	
Australia (AUS)	13.210.3.192/28	Firewall Address and Port Information
Azure, Canada Central (ACA)	20.151.64.48/28	Firewall Address and Port Information
Azure, US East (AVA)	52.226.89.112/28	Firewall Address and Port Information
Brazil (BR)	18.228.70.16/28	Firewall Address and Port Information
Germany (FRA)	3.67.81.96/27 18.194.95.0/28	Firewall Address and Port Information
India (IN)	13.232.67.8/29 3.6.70.64/29	Firewall Address and Port Information

Data Center	IP Block	Addresses and Ports
Ireland (IE)	34.253.190.192/26	Firewall Address and Port Information
Japan (JP)	18.176.203.112/29 13.231.6.232/29 57.181.58.0/28	Firewall Address and Port Information
Netherlands (NL-GCP)	34.91.82.64/27	Firewall Address and Port Information
Singapore (SG-GCP)	34.87.158.80/28	Firewall Address and Port Information
Spain (ES)	18.101.49.128/27	Firewall Address and Port Information
Sweden (SE)	13.48.186.224/29 13.48.4.184/29 13.48.4.240/28	Firewall Address and Port Information
Switzerland (ACH)	51.107.1.192/28	Firewall Address and Port Information
United Arab Emirates (UAE)	3.28.159.128/28	Firewall Address and Port Information
United Kingdom (UK-AGB)	51.143.233.80/28	Firewall Address and Port Information
US East (VA)	34.202.197.0/26 44.192.245.0/26 3.234.248.0/27	Firewall Address and Port Information
US East 2 (VA2)	34.202.197.0/26 44.192.245.0/26 3.234.248.0/27	Firewall Address and Port Information
US-Iowa (IA-GCP)	34.67.130.64/27	Firewall Address and Port Information
US Ohio (OH)	3.145.235.64/26	Firewall Address and Port Information

Supported IQ Engine v10.7.1 Software

See the [Release Notes](#) for information about the current release of IQ Engine.



Previous Release

- [New Features in 24.4.0.61](#) on page 7
- [Addressed Issues in 24.4.0.61](#) on page 11
- [Known Issues in 24.4.0.61](#) on page 12

This section lists the new features, addressed issues, and known issues for the previous release.

New Features in 24.4.0.61

Device OS Support

This release adds support for the following device operating systems:

- **ExtremeXOS/Switch Engine:**
 - 32.6.3 Image Download Support
 - 32.6.3 Onboard, Monitor, Config, Image Drag & Drop Support
 - 31.7.3 Patch 1-X Image Download Support
 - 31.7.3 Patch 1-X Onboard, Monitor, Config, Image Drag & Drop Support
 - EXOS iqagent 0.8.3 – Switch Engine supports IQagent 0.8.3
- **VOSS/Fabric Engine:**
 - VOSS iqagent 0.8.3 – Fabric Engine now supports IQagent 0.8.3
- **IQ Engine:**
 - IQ Engine 10.7.1

New Hardware Support

This release adds support for the AP5020.

Table 5: New Features in 24.4.0.61

Feature ID	Feature	Description
WS-5	On-boarding a new cloud customer or prospect	New ExtremeCloud IQ account registration is no longer permitted from certain email domains, including public email services such as Gmail and Yahoo Mail.
XIQ-1612	'Unassigned' Network Policy Filter	The Network Policy filter now includes an Unassigned filter option to quickly identify devices that do not have a Network Policy assigned to them.

Table 5: New Features in 24.4.0.61 (continued)


Feature ID	Feature	Description
XIQ-11485	Enhance Switch Health (CPU, Mem, Temp) Status Updates	Universal Hardware Switches running Switch Engine 32.7 and later now display near real time information for CPU, Memory, and Temperature widgets on the Manage > Devices > Monitor > Overview page.
XIQ-15455	Support Switch Engine Ping Protection Event	Universal Hardware switches running Switch Engine 32.7 and later now display events for static route ping protection status on the Manage > Devices > Monitor > Events page.
XIQ-15456	Support Switch Engine DHCP Snooping Rogue MAC Detection Event	Universal Hardware switches running Switch Engine 32.7 and later now display events for DHCP Rogue MAC detection status on the Manage > Devices > Monitor > Events page.
XIQ-16326	Client troubleshooting flow	The updated Manage > Clients page includes new capabilities. You can now sort clients by sites, preview client RSSI and SNR, filter by connection type, filter by category assignment, and filter by OS Type. New charts display overall health scores, client type, and client issues. Two new client tabs, one for healthy and one for unhealthy. The tab for unhealthy clients has a new troubleshooting workflow to help isolate issues as they occur.
XIQ-17619	Create new Site Engine Managed View	We added a new Site Engine Managed view to the Manage > Devices View drop-down list.
XIQ-19765	Show that device config rollback occurred	Device Configuration Rollback is an existing IQ Engine feature. This feature automatically restores cloud manageability after the application of a bad configuration. With this release, under Managed > Devices , the  icon indicates that a configuration rollback has occurred.

Table 5: New Features in 24.4.0.61 (continued)

Feature ID	Feature	Description
XIQ-25103	Real-time RF Heatmaps (phase 1)	<p>A new real-time mapping system is available, including:</p> <ul style="list-style-type: none"> • Real-time radio frequency (RF) heatmaps • Import support for Ekahau and Hamina • Scaling tool • Definable wall types • Custom attenuation settings • Support for 2.4 GHz, 5 GHz, 6 GHz, and BLE Radios • Visualization of active channel plan • Drop-down selection for various coverage views • Definable RSSI thresholds • Dual 5 GHz visibility • Dual 6 GHz visibility (Wi-Fi 7) • AP and client information modals
XIQ-26056	AP5020 SDR Mode Configuration Phase 1	<p>The AP5020 supports two radio modes with this release:</p> <ul style="list-style-type: none"> • Mode 1 (Tri-Radio): 2.4 GHz (Radio-1), 5 GHz (Radio-2), 6 GHz (Radio-3) • Mode 3 (Dual 5 GHz w/ 6 GHz): 5 GHz (Radio-1), 5 GHz (Radio-2), 6 GHz (Radio-3)
XIQ-26669	Wireless PoE Stability v2 - Current PoE Mode	<p>As part of a series of enhancements to the Wireless PoE Stability anomaly, the anomaly details header now includes the current PoE mode of the AP. If the AP is online, the header indicates the last measured PoE mode of the AP. If the AP is offline, the header indicates that the AP is Disconnected. This enhancement helps users to quickly understand whether the anomalous PoE condition is still an issue.</p>
XIQ-26670	Wireless PoE Stability v2 - New Algorithm	<p>As part of a series of Wireless PoE Stability anomaly enhancements, we deprecated the concept of PoE anomaly "types". Instead, we consolidated them into a single Wireless PoE Stability stability anomaly. Previously, Wireless PoE Stability anomalies were of the types: FLIP, TIME, or SUB_OPTIMAL.</p>

Table 5: New Features in 24.4.0.61 (continued)

Feature ID	Feature	Description
XIQ-26671	Wireless PoE Stability v2 - Issue, Impact and Recommendation	As part of a series of Wireless PoE Stability anomaly enhancements, we updated the anomaly description to include descriptions of the issue and the impact, and to provide recommended actions for the anomaly type.
XIQ-26673	Wireless PoE Stability v2 - PoE Trends Graph	As part of a series of enhancements to the Wireless PoE Stability anomaly, we enhanced the PoE changes graphs to indicate the changes in PoE mode value, negotiated over time.
XIQ-26912	CoPilot - Wi-Fi Capacity - Reduce algorithm sensitivity	Based on research that we conducted, we updated the threshold values for Wi-Fi capacity algorithms to reduce sensitivity to intermittent events.
XIQ-27837	Wireless PoE Stability v2 - LLDP enabled	As part of a series of enhancements to the Wireless PoE Stability anomaly, we enhanced the information provided for a detected anomaly, with LLDP neighbor information. LLDP neighbor information includes the upstream LLDP switch, and other anomalous APs connected to the same switch at the time.
XIQ-27838	Wireless PoE Stability v2 - LLDP disabled	As part of a series of enhancements to the Wireless PoE Stability anomaly, we enhanced the information provided for a detected anomaly, with LLDP neighbor information. If LLDP is disabled, the PoE-Related Analysis on Nearby APs indicates that LLDP is disabled.

Addressed Issues in 24.4.0.61

Table 6: Addressed Issues in 24.4.0.61

Issue ID	Description
CFD-9413	<p>Cause: The elastic search query returned only 10 entries by default.</p> <p>Fix: A size parameter for the elastic search query returns all the entries.</p>
CFD-10632	<p>Fix-1:</p> <ul style="list-style-type: none"> • Cause: New fields mgtOMtu and enableMgtOMtuSetting are not null value, but they pass the null value rule. • Fix: Set value from copyVo object. <p>Fix-2:</p> <ul style="list-style-type: none"> • Cause: Not appending constraint column in the format <code>ownerId_orgId_name</code>, which is from json. • Fix: Appending constraining while saving the port and policy name.
XIQ-1043	<p>The ExtremeCloud IQ Global Search supports commonly used MAC Address format. Common formats include:</p> <ul style="list-style-type: none"> • aa-bb-cc-dd-ee-ff • aa:bb:cc:dd:ee:ff • aabb.ccdd.eeff • aabbccddeeff
XIQ-4486	<p>Under Global Settings > Accounts, changed Google Authenticator to Multi-Factor Authenticator. Functionality is not limited to Google Authenticator. ExtremeCloud IQ supports any multi-factor authenticator application that supports one-time password.</p>
XIQ-16543	<p>ExtremeCloud IQ supports AP5020 basic features, including Device360, Fabric Attach, PCG, and 320 MHz channel width; with more to come in future releases.</p>
XIQ-18291	<p>The Cloud Config Group column under Manage > Devices supports special characters for ordering.</p>
XIQ-23064	<p>Ended the beta support for legacy XMC. Removed XMC from ExtremeCloud IQ filters and onboarding options. This change does not affect ExtremeCloud IQ Site Engine.</p>
XIQ-23569	<p>ExtremeCloud IQ supports IQ Engine 10.7r1.</p>
XIQ-26700	<p>The Extreme Networks Access Point portfolio has been updated to MAC OUI's under Configure > Common Objects > MAC Objects/MAC OUIs.</p>
XIQ-27968	<p>Universal Hardware running Switch Engine 32.7 and later, displays a tool tip for routes with ping protection enabled within Manage > Devices > Monitoring > Routing.</p>
XIQ-28975	<p>Added AP5020 (Wi-Fi 7) support to: USA, Canada, EU, Puerto Rico, Colombia, and the United Kingdom.</p>

Table 6: Addressed Issues in 24.4.0.61 (continued)

Issue ID	Description
XIQ-28976	Added AP5020 (Wi-Fi 7) support to: Australia, New Zealand, Brazil, Mexico, Japan, South Korea, Singapore, South Africa, and UAE.
XIQ-29605	Under ML Insights > Network 360 , the Unassigned location tree option displays the health score and related information for devices that have no assigned site or location.
XIQ-29676	Guest Manager manages all users in the user group that was assigned to them. Not only users created by him/her.
XIQ-31195 XIQ-31049	Fixed the following broken links in About ExtremeCloud IQ > Terms and Conditions : <ul style="list-style-type: none"> • ExtremeCloud IQ Terms of Service • ExtremeCloud IQ Evaluation Agreement
XIQ-31504	Updated VLAN attributes within a network policy under Switching/Routing section to not permit <code>Mgmt</code> to be used as a VLAN attribute name. <code>Mgmt</code> is a reserved keyword that cannot be used for a Switch Engine VLAN name.

Known Issues in 24.4.0.61

The following table lists known product issues. Issues are grouped according to ID prefix and sorted within their group with the most recently logged issue listed first. (Issue IDs are in descending order.)

Table 7: Known Issues in 24.4.0.61

Issue ID	Description
XIQ-31560	Security enhancement implemented in ExtremeCloud IQ 24r4 requires ExtremeCloud IQ Site Engine version 24.2.14, minimum, for Single Sign-On from ExtremeCloud IQ to ExtremeCloud IQ Site Engine (Open Site Engine in the Device 360 View).
XIQ-31433	The Cloud Service component of iBeacon is temporarily disabled. This service will be available in a future release (ETA, 24r6).
XIQ-30696	The AP5020s High-Density option, as well as other advanced configuration options, within the Wi-Fi 7 Radio Profile settings are not currently supported. These options will be available in a future release.
HOS-20803	Client Monitor 2.0 and Dynamic Packet Capture may not work for WPA3-ENT protected SSIDs.
XCP-1069	Linking to the Extreme Portal immediately after unlinking from it might result in some subscriptions not being properly revoked from the license pool. Workaround: After unlinking from the Extreme Portal, wait to allow time for the workflow to complete, before relinking.

Table 7: Known Issues in 24.4.0.61 (continued)

Issue ID	Description
XESS-1420	Termination of rogue AP and Rogue Clients is only supported on the 2.5Ghz and 5Ghz Bands. It does not support 6Ghz.
XIQ-27317	A delta configuration push failure occurs with the AP3000. Workaround: Push a complete configuration update to all 6 GHz capable access points.
XIQ-25796	Support for Switch Engine 32.4.1.10 has been deprecated from Digital Twin due to software compliance requirements. Therefore, it is not possible to create new Digital Twin instances or to relaunch existing instances at this time. Digital Twin functionality will resume with XIQ 24.3.
XIQ-25506 02859821, 02862601, 02868575	An upgrade to VOSS/Fabric Engine 9.0 no longer requires a 10G license for 5320 SKUs. An issue exists where the Manage > Devices table does not correctly display an existing 10G license in the License column. However, the 10G license can still be revoked with the Action > Revoke > License > 4-port 10G or 8-port 10G license option.
XIQ-22574	ExtremeCloud IQ accounts that are restricted to see devices in certain locations do not see devices that do not have a location set. Workaround: Prevent user roles with access to a subset of locations from having access to devices that are not placed in a location.
XIQ-22462	A configuration update might fail for configurations related to IPv6 on Switch Engine running software version 32.5.1.5. Workaround: Upgrade to 32.5.1.5 Patch1-1 and then proceed with pushing a device configuration update.
XIQ-21943	When an account goes into License Violation state, the user interface might not be locked until the page is refreshed or the user logs out and logs in again. There is no notification to the user, and some actions do not work in the License Violation state.
XIQ-20111	It is impossible to modify elements of a site configuration if a country is not assigned to the site. Each site must have an assigned country.
XIQ-20962	Device Update Fails while trying to push the config to AP template with modified OWE config.
XIQ-20909	AP3000: When trying to configure 6 GHz for a country that does not support it, the configuration push fails. Workaround: Revert to 2.4 GHz.
XIQ-19572	Upon upgrade from ExtremeCloud IQ 23.2.x to 23.3.x, the Manage > Devices page does not retain settings from 23.2.x for the os option under the Column Picker drop-down list. To revert to the 23.2.x page view, the os option must be reselected, and the column repositioned on the page.

Table 7: Known Issues in 24.4.0.61 (continued)

Issue ID	Description
XIQ-18679	Onboarding of Switch Engine instances might result in incorrect license violations reported in ExtremeCloud IQ due to a Navigator license consumption when ExtremeCloud IQ CoPilot licenses are available. Workaround: Set devices to Unmanaged and then to Managed .
XIQ-18544	When VGVA configurations fail due to using the same WPA3 SSID in a single network policy, move the APs associated with the WPA3 enabled SSID to a different profile.
XIQ-18175	The question mark character is supported in the Global Setting > Device Management Settings password text box, but it is not supported in the Policy > Device Credentials password text box. Note: Switch Engine and Fabric Engine do not support the question mark character. You can create a separate password for Switch Engine and Fabric Engine at device-level configuration.
XIQ-17024	The Cable Test action is not supported on the x435 switch running the 32.3 software image due to limitations with storage space on the switch.
XIQ-16652	The AP3000/X and AP5010U Auto Provision Update is failing with country code discover timeout.
XIQ-12503	Network 360 shows Unknown Error when All Access Points Applications is selected and the user is selecting both ExtremeWireless WiNG and IQ Engine devices. Workaround: Deselect ExtremeWireless WiNG devices.
XIQ-11984	For AP3000/X and AP5050U/D devices operating in dual mode, under Manage > Devices > Interface Settings > Modify Multiple : Interface Settings > Wireless Interfaces , the radio Operating Mode drop-down list includes a 5 GHz selectable option; however, this option is not supported with this configuration.
XIQ-9848	There are duplicate entries in the Client Trail when a client moves away from the AP then comes back.
XIQ-9847	The Roam Time entry in the Client Trail does not always display the correct device name.
XIQ-7312	5720 Switch Engine devices show as connected during the reboot process.
XIQ-5700	Client Trial showed only the currently connected AP when the client roamed to a different AP from the onboarded ExtremeCloud IQ Controller.
CFD-8946 (02710778, 02748750)	License descriptions are automatically cleared when the Activated status is updated.
CFD-8678 (02688797)	VLAN probe category counts are not always accurate.

Table 7: Known Issues in 24.4.0.61 (continued)

Issue ID	Description
CFD-8677 (02688860)	VLAN probe shows the results of a successful probe while the status says it is still running.
CFD-8216 (02634924)	When Air Defense Essentials is enabled, APs running IQ Engine 10.4.3 or earlier versions cannot receive a delta configuration push from ExtremeCloud IQ. Workaround: Upgrade the access points to the latest IQ Engine supported version.
APC-41057	Legend labels on the switch stack graph sometimes disappear when attempting to download or print the graph. Workaround: Download one graph at a time, and open the downloaded file before choosing to download again. Note: The SVG option is the most stable format; PNG, JPG, and PDF have spacing issues on the legend section.
APC-22297	ExtremeCloud IQ displays PoE configuration controls for all ports on the Dell EMC N1108P switch, even though the N1100P only supports PoE on ports 1 - 4.
APC-21456	In rare cases, ExtremeCloud IQ does not upload some IGMP sub-commands successfully. Workaround: Use the Supplemental CLI to upload commands when necessary. To use the supplemental CLI tool, go to Global Settings > VIQ Management , and set the Supplemental CLI slider to ON .
APC-20760	ExtremeCloud IQ reports all wired devices that are connected to an SR2208P switch as unidentified.
APC-20734	When a configuration upload is unsuccessful because of improper Supplemental CLI commands, hovering the mouse over the upload message does not result in a tool tip containing the problematic CLI command.
APC-20647	ExtremeCloud IQ does not successfully upload configurations that contain an external RADIUS server.
APC-20172	ExtremeCloud IQ wrongly displays the option to configure SSH when attempting bulk edits of multiple switches or of switches and APs together. However, when the administrator is performing bulk edits of multiple APs only, ExtremeCloud IQ correctly hides the SSH configuration options.
DAPC-385	ExtremeCloud IQ sometimes displays the incorrect port number in the tool tip when the administrator mouses over a stack port on the Port Status page.
DAPC-382	When an administrator attaches a switch stack to HiveManager Virtual Appliance , only the primary switch is auto-detected. The administrator must subsequently onboard the remaining stack members manually.

Table 7: Known Issues in 24.4.0.61 (continued)

Issue ID	Description
DAPC-240D	<p>After the primary switch is removed from a stack, the stack retains the old MAC address. As a result, the primary switch (now a standalone switch), and the original stack both have the same MAC address, which ExtremeCloud IQ cannot resolve.</p> <p>Workaround: Before removing the primary switch from a stack with the intention of continuing to use the primary as a standalone switch, perform the following steps:</p> <ol style="list-style-type: none"> 1. Remove the stack from ExtremeCloud IQ. 2. Perform the related command line operations on the stack to remove the primary switch. 3. Add the stack and the standalone switch to ExtremeCloud IQ again.
DAPC-222	<p>After an administrator uploads a stack template to a switch stack, ExtremeCloud IQ displays [-No Change-] in the Stack Template drop-down list, rather than the new template name.</p>
DAPC-186	<p>ExtremeCloud IQ does not display the management VLAN information in the Devices table.</p>
DAPC-73	<p>When resetting multiple switches simultaneously to factory default settings, ExtremeCloud IQ erroneously reports that the reset was unsuccessful.</p>



Device Support Information

- [Controllers](#) on page 17
- [Access Points](#) on page 18
- [Switches](#) on page 22
- [Routers](#) on page 44
- [ExtremeCloud IQ Site Engine](#) on page 45
- [ExtremeCloud IQ CoPilot](#) on page 49
- [ExtremeCloud A3](#) on page 49
- [Supported Browsers and Display Settings](#) on page 49

This section lists the devices that ExtremeCloud IQ supports and includes the latest version of the software that each device supports.

Controllers

Device Model	Latest Supported Release	Comments
E1120	XIQC 10.09.01	Monitor only
E2120	XIQC 10.09.01	Monitor only
E2122	XIQC 10.09.01	Monitor Only
E3120	XIQC 10.09.01	Monitor only
VE6120	XIQC 10.09.01	Monitor only
VE6120H	XIQC 10.05.02	Monitor only
VE6120K	XIQC 10.09.01	Monitor Only
VE6125	XIQC 10.09.01	Monitor only
VE6125K	XIQC 10.09.01	Monitor Only
NX5500	WiNG OS 7.9.4.0	Monitor only
NX7500 Series	WiNG OS 7.9.4.0	Monitor only
NX9500 Series	WiNG OS 7.7.1.9	Monitor only
NX9600 Series	WiNG OS 7.9.4.0	Monitor only
RFS4000 Series	WiNG OS 5.9.7.1	Monitor only
RFS6000 Series	WiNG OS 5.9.1.8	Monitor only
RFS7000 Series	WiNG OS 5.8.6.11	Monitor only
VX9000	WiNG OS 7.9.4.0	Monitor only

Access Points

Access Point information is provided in the following sections:

- [Universal Hardware](#) on page 18
- [IQ Engine \(Cloud Native\)](#) on page 19
- [ExtremeWireless WiNG](#) on page 20
- [Extreme Wireless](#) on page 21

Universal Hardware

Device Model	Latest Supported Release	Comments
AP302W	IQ Engine 10.6.7 WiNG OS 7.9.4.0 AP 10.9.1	Platform support introduced with IQ Engine 10.3.1
AP305C	IQ Engine 10.6.7 WiNG OS 7.9.4.0 AP 10.9.1	Platform support introduced with IQ Engine 10.1.1
AP305C-1	IQ Engine 10.6.7 WiNG OS 7.9.4.0 AP 10.9.1	Platform support introduced with IQ Engine 10.4.6
AP305CX	IQ Engine 10.6.7 WiNG OS 7.9.4.0 AP 10.9.1	Platform support introduced with IQ Engine 10.1.1
AP3000	IQ Engine 10.6.7 AP 10.9.1	Platform support introduced with IQ engine 10.6.1
AP3000X	IQ Engine 10.6.7	Platform support introduced with IQ Engine 10.6.1
AP4000	IQ Engine 10.6.7 AP 10.9.1	Platform support introduced with IQ Engine 10.4.1
AP4000-1	IQ Engine 10.6.7 AP 10.9.1	Platform support introduced with IQ Engine 10.4.2
AP410C	IQ Engine 10.6.7 WiNG OS 7.9.4.0 AP 10.9.1	Platform support introduced with IQ Engine 10.1.2
AP410C-1	IQ Engine 10.6.7 WiNG OS 7.9.4.0 AP 10.9.1	Platform support introduced with IQ Engine 10.4.6
AP460C	IQ Engine 10.6.7 WiNG OS 7.9.4.0 AP 10.9.1	Platform support introduced with IQ Engine 10.1.2

Device Model	Latest Supported Release	Comments
AP460S6C	IQ Engine 10.6.7 WiNG OS 7.9.4.0 AP 10.9.1	Platform support introduced with IQ Engine 10.1.2
AP460S12C	IQ Engine 10.6.7 WiNG OS 7.9.4.0 AP 10.9.1	Platform support introduced with IQ Engine 10.1.2
AP5010	IQ Engine 10.6.7 AP 10.9.1 WiNG OS 7.9.4.0	Platform support introduced with IQ Engine 10.5.1
AP5020	IQ Engine 10.7.1 AP 10.10.1	Platform support introduced with IQ Engine 10.7.1
AP5050U	IQ Engine 10.6.7 AP 10.9.1	Platform support introduced with IQ Engine 10.5.3
AP5050D	IQ Engine 10.6.7 AP 10.9.1	Platform support introduced with IQ Engine 10.5.3
AP510C/CX	IQ Engine 10.6.7	Platform support introduced with IQ Engine 10.0.8

IQ Engine (Cloud Native)

Device Model	Latest Supported Release	Comments
AP630	IQ Engine 10.6.7	Platform support introduced with IQ Engine 10.0.1. End of Life Information
AP650	IQ Engine 10.6.7	Platform support introduced with IQ Engine 10.0.1. End of Life Information
AP650X	IQ Engine 10.6.7	Platform support introduced with IQ Engine 10.0.1. End of Life Information
AP1130	IQ Engine 10.6.1a	Platform support introduced with IQ Engine 8.2.1. End of Life Information
AP550	IQ Engine 10.6.1a	Platform support introduced with IQ Engine 7.0.3. End of Life Information
AP390	IQ Engine 6.5.16	End of Life Information
AP370	IQ Engine 6.5.16	End of Life Information
AP350	IQ Engine 6.5.16	End of Life Information
AP340	IQ Engine 6.5.10	End of Life Information
AP330	IQ Engine 6.5.16	End of Life Information

Device Model	Latest Supported Release	Comments
AP320	IQ Engine 6.5.10	End of Life Information
AP250	IQ Engine 10.6.1a	Platform support introduced with IQ Engine 7.0.2.
AP245X	IQ Engine 10.6.1a	Platform support introduced with IQ Engine 7.0.2. End of Life Information
AP230	IQ Engine 10.6.1a	Platform support introduced with IQ Engine 8.2.1. End of Life Information
AP170	IQ Engine 6.5.16	End of Life Information
AP150W	IQ Engine 10.6.1a	Platform support introduced with IQ Engine 8.1.1. End of Life Information
AP141	IQ Engine 6.5.16	End of Life Information
AP130	IQ Engine 10.6.1a	Platform support introduced with IQ Engine 8.2.1. End of Life Information
AP122	IQ Engine 10.6.1a	Platform support introduced with IQ Engine 7.0.4.
AP122X	IQ Engine 10.6.1a	Platform support introduced with IQ Engine 8.2.1. End of Life Information
AP121	IQ Engine 6.5.16	End of Life Information
AP120	IQ Engine 6.5.10	End of Life Information
Atom AP30	IQ Engine 10.6.1a	Platform support introduced with IQ Engine 8.3.2. End of Life Information

ExtremeWireless WiNG

Device Model	Latest Supported Release	Comments
AP560i	WiNG OS 7.9.4.0	Monitor only
AP560h	WiNG OS 7.9.4.0	Monitor only
AP505	WiNG OS 7.9.4.0	Monitor only
AP510i	WiNG OS 7.9.4.0	Monitor only
AP510i-1	WiNG OS 7.9.4.0	Monitor only
AP460i/e	WiNG OS 7.9.4.0	Monitor only
AP410i/e	WiNG OS 7.9.4.0	Monitor only
AP410i-1	WiNG OS 7.9.4.0	Monitor only
AP360i/e	WiNG OS 7.9.4.0	Monitor only
AP310i/e	WiNG OS 7.9.4.0	Monitor only
AP310i/e-1	WiNG OS 7.9.4.0	Monitor Only
AP3000	WiNG OS 7.9.4.0	Monitor Only
AP8533	WiNG OS 7.7.1.9	Monitor only

Device Model	Latest Supported Release	Comments
AP8432	WiNG OS 7.7.1.9	Monitor only
AP8232	WiNG OS 5.9.1.8	Monitor only
AP8222	WiNG OS 5.8.6.11	Monitor only
AP8163	WiNG OS 5.9.7.1	Monitor only
AP8132	WiNG OS 5.9.1.8	Monitor only
AP8122	WiNG OS 5.9.1.8	Monitor only
AP7662	WiNG OS 7.7.1.9	Monitor only
AP7632	WiNG OS 7.7.1.9	Monitor only
AP7622	WiNG OS 5.9.7.1	Monitor only
AP7612	WiNG OS 7.7.1.9	Monitor only
AP7602	WiNG OS 5.9.7.1	Monitor only
AP7562	WiNG OS 7.7.1.9	Monitor only
AP7532	WiNG OS 7.7.1.9	Monitor only
AP7522	WiNG OS 7.7.1.9	Monitor only
AP7502	WiNG OS 5.9.7.1	Monitor only
AP7161	WiNG OS 5.9.1.8	Monitor only
AP7131	WiNG OS 5.8.6.11	Monitor only
AP6562	WiNG OS 5.9.1.8	Monitor only
AP6532	WiNG OS 5.9.1.8	Monitor only
AP6522	WiNG OS 5.9.1.8	Monitor only
AP6521	WiNG OS 5.9.1.8	Monitor only
AP6511	WiNG OS 5.8.6.11	Monitor only

Extreme Wireless

Device Model	Latest Supported Release	Comments
AP3965	ExtremeWireless 10.51	Monitor only
AP3935	ExtremeWireless 10.51	Monitor only
AP3917	ExtremeWireless 10.51	Monitor only
AP3916C	ExtremeWireless 10.51	Monitor only
AP3915	ExtremeWireless 10.51	Monitor only
AP3912	ExtremeWireless 10.51	Monitor only
SA201	ExtremeWireless 10.51	Monitor only

Switches

Switch information is provided in the following sections:

- [Universal Hardware](#) on page 23
- [ExtremeXOS](#) on page 38
- [VOSS](#) on page 42
- [IQ Engine \(Cloud Native\)](#) on page 43
- [Dell EMC](#) on page 44

For the latest release notes for Fabric Engine and Switch Engine , see the [Extreme Networks Documentation Site](#).

Universal Hardware

Device Model	Latest Supported Release	Standalone Support	Stack Support
4120-24MW-4Y	Switch Engine 32.7.1	<ul style="list-style-type: none"> Onboard Monitor Template- and device-level configuration SSH Proxy* Supplemental CLI* <p>Note: Pilot license required to configure advanced features.</p>	<ul style="list-style-type: none"> Onboard Monitor Template- and device-level configuration SSH Proxy* Up to 8 unit stacking 200Gb stacking through two built-in QSFP28 ports <p>Note: Can only stack with other 4120 devices. Cross stacking between 4120 and 4220 is not supported. Cross stacking between 4000 and 5000 is not supported.</p>
4120-48MW-4Y	Switch Engine 32.7.1	<ul style="list-style-type: none"> Onboard Monitor Template- and device-level configuration SSH Proxy* Supplemental CLI* <p>Note: Pilot license required to configure advanced features.</p>	<ul style="list-style-type: none"> Onboard Monitor Template- and device-level configuration SSH Proxy* Up to 8 unit stacking 200Gb stacking through two built-in QSFP28 ports <p>Note: Can only stack with other 4120 devices. Cross stacking between 4120 and 4220 is not supported. Cross stacking between 4000 and 5000 is not supported.</p>

Device Model	Latest Supported Release	Standalone Support	Stack Support
4120-Series-Stack	Switch Engine 32.7.1	<ul style="list-style-type: none"> • Onboard • Monitor • Template- and device-level configuration • SSH Proxy* • Supplemental CLI* <p>Note: Pilot license required to configure advanced features.</p>	<ul style="list-style-type: none"> • Onboard • Monitor • Template- and device-level configuration • SSH Proxy* • Up to 8 unit stacking • 200Gb stacking through two built-in QSFP28 ports <p>Note: Can only stack with other 4120 devices. Cross stacking between 4120 and 4220 is not supported. Cross stacking between 4000 and 5000 is not supported.</p>
4220-12P-4X	Switch Engine 32.7.1 Fabric Engine 9.0	<ul style="list-style-type: none"> • Onboard • Monitor • Template- and device-level configuration • SSH Proxy* • Supplemental CLI* <p>Note: Pilot license required to configure advanced features.</p>	<ul style="list-style-type: none"> • Onboard • Monitor • Template- and device-level configuration • SSH Proxy* • Up to 8 unit stacking • 40Gb stacking through two built-in SFP+ uplink ports <p>Note: Can only stack with other 4220 devices. Cross stacking between 4120 and 4220 is not supported. Cross stacking between 4000 and 5000 is not supported.</p>

Device Model	Latest Supported Release	Standalone Support	Stack Support
4220-12T-4X	Switch Engine 32.7.1 Fabric Engine 9.0	<ul style="list-style-type: none"> • Onboard • Monitor • Template- and device-level configuration • SSH Proxy* • Supplemental CLI* <p>Note: Pilot license required to configure advanced features.</p>	<ul style="list-style-type: none"> • Onboard • Monitor • Template- and device-level configuration • SSH Proxy* • Up to 8 unit stacking • 40Gb stacking through two built-in SFP+ uplink ports <p>Note: Can only stack with other 4220 devices. Cross stacking between 4120 and 4220 is not supported. Cross stacking between 4000 and 5000 is not supported.</p>
4220-24P-4X	Switch Engine 32.7.1 Fabric Engine 9.0	<ul style="list-style-type: none"> • Onboard • Monitor • Template- and device-level configuration • SSH Proxy* • Supplemental CLI* <p>Note: Pilot license required to configure advanced features.</p>	<ul style="list-style-type: none"> • Onboard • Monitor • Template- and device-level configuration • SSH Proxy* • Up to 8 unit stacking • 40Gb stacking through two built-in SFP+ uplink ports <p>Note: Can only stack with other 4220 devices. Cross stacking between 4120 and 4220 is not supported. Cross stacking between 4000 and 5000 is not supported.</p>

Device Model	Latest Supported Release	Standalone Support	Stack Support
4220-24T-4X	Switch Engine 32.7.1 Fabric Engine 9.0	<ul style="list-style-type: none"> • Onboard • Monitor • Template- and device-level configuration • SSH Proxy* • Supplemental CLI* <p>Note: Pilot license required to configure advanced features.</p>	<ul style="list-style-type: none"> • Onboard • Monitor • Template- and device-level configuration • SSH Proxy* • Up to 8 unit stacking • 40Gb stacking through two built-in SFP+ uplink ports <p>Note: Can only stack with other 4220 devices. Cross stacking between 4120 and 4220 is not supported. Cross stacking between 4000 and 5000 is not supported.</p>
4220-48P-4X	Switch Engine 32.7.1 Fabric Engine 9.0	<ul style="list-style-type: none"> • Onboard • Monitor • Template- and device-level configuration • SSH Proxy* • Supplemental CLI* <p>Note: Pilot license required to configure advanced features.</p>	<ul style="list-style-type: none"> • Onboard • Monitor • Template- and device-level configuration • SSH Proxy* • Up to 8 unit stacking • 40Gb stacking through two built-in SFP+ uplink ports <p>Note: Can only stack with other 4220 devices. Cross stacking between 4120 and 4220 is not supported. Cross stacking between 4000 and 5000 is not supported.</p>

Device Model	Latest Supported Release	Standalone Support	Stack Support
4220-48T-4X	Switch Engine 32.7.1 Fabric Engine 9.0	<ul style="list-style-type: none"> • Onboard • Monitor • Template- and device-level configuration • SSH Proxy* • Supplemental CLI* <p>Note: Pilot license required to configure advanced features.</p>	<ul style="list-style-type: none"> • Onboard • Monitor • Template- and device-level configuration • SSH Proxy* • Up to 8 unit stacking • 40Gb stacking through two built-in SFP+ uplink ports <p>Note: Can only stack with other 4220 devices. Cross stacking between 4120 and 4220 is not supported. Cross stacking between 4000 and 5000 is not supported.</p>
4220-4MW-20P-4X	Switch Engine 32.7.1 Fabric Engine 9.0	<ul style="list-style-type: none"> • Onboard • Monitor • Template- and device-level configuration • SSH Proxy* • Supplemental CLI* <p>Note: Pilot license required to configure advanced features.</p>	<ul style="list-style-type: none"> • Onboard • Monitor • Template- and device-level configuration • SSH Proxy* • Up to 8 unit stacking • 40Gb stacking through two built-in SFP+ uplink ports <p>Note: Can only stack with other 4220 devices. Cross stacking between 4120 and 4220 is not supported. Cross stacking between 4000 and 5000 is not supported.</p>

Device Model	Latest Supported Release	Standalone Support	Stack Support
4220-4MW-8P-4X	Switch Engine 32.7.1 Fabric Engine 9.0	<ul style="list-style-type: none"> • Onboard • Monitor • Template- and device-level configuration • SSH Proxy* • Supplemental CLI* <p>Note: Pilot license required to configure advanced features.</p>	<ul style="list-style-type: none"> • Onboard • Monitor • Template- and device-level configuration • SSH Proxy* • Up to 8 unit stacking • 40Gb stacking through two built-in SFP+ uplink ports <p>Note: Can only stack with other 4220 devices. Cross stacking between 4120 and 4220 is not supported. Cross stacking between 4000 and 5000 is not supported.</p>
4220-8MW-40P-4X	Switch Engine 32.7.1 Fabric Engine 9.0	<ul style="list-style-type: none"> • Onboard • Monitor • Template- and device-level configuration • SSH Proxy* • Supplemental CLI* <p>Note: Pilot license required to configure advanced features.</p>	<ul style="list-style-type: none"> • Onboard • Monitor • Template- and device-level configuration • SSH Proxy* • Up to 8 unit stacking • 40Gb stacking through two built-in SFP+ uplink ports <p>Note: Can only stack with other 4220 devices. Cross stacking between 4120 and 4220 is not supported. Cross stacking between 4000 and 5000 is not supported.</p>

Device Model	Latest Supported Release	Standalone Support	Stack Support
4220-8X	Switch Engine 32.7.1 Fabric Engine 9.0	<ul style="list-style-type: none"> • Onboard • Monitor • Template- and device-level configuration • SSH Proxy* • Supplemental CLI* <p>Note: Pilot license required to configure advanced features.</p>	<ul style="list-style-type: none"> • Onboard • Monitor • Template- and device-level configuration • SSH Proxy* • Up to 8 unit stacking • 40Gb stacking through two built-in SFP+ uplink ports <p>Note: Can only stack with other 4220 devices. Cross stacking between 4120 and 4220 is not supported. Cross stacking between 4000 and 5000 is not supported.</p>
4220-Series-Stack	Switch Engine 32.7.1 Fabric Engine 9.0	<ul style="list-style-type: none"> • Onboard • Monitor • Template- and device-level configuration • SSH Proxy* • Supplemental CLI* <p>Note: Pilot license required to configure advanced features.</p>	<ul style="list-style-type: none"> • Onboard • Monitor • Template- and device-level configuration • SSH Proxy* • Up to 8 unit stacking • 40Gb stacking through two built-in SFP+ uplink ports <p>Note: Can only stack with other 4220 devices. Cross stacking between 4120 and 4220 is not supported. Cross stacking between 4000 and 5000 is not supported.</p>

Device Model	Latest Supported Release	Standalone Support	Stack Support
5320-16P-4XE	Switch Engine 32.7 Fabric Engine 9.0	<ul style="list-style-type: none"> • Monitor • Template- and device-level configuration • SSH Proxy* • Supplemental CLI* 	<p>Switch Engine:</p> <ul style="list-style-type: none"> • Monitor • Template- and device-level configuration • SSH Proxy <p>Note: Cross stacking between 4000 and 5000 is not supported.</p>
5320-16P-4XE-DC	Switch Engine 32.7 Fabric Engine 9.0	<ul style="list-style-type: none"> • Monitor • Template- and device-level configuration • SSH Proxy* • Supplemental CLI* 	<p>Switch Engine:</p> <ul style="list-style-type: none"> • Monitor • Template- and device-level configuration • SSH Proxy <p>Note: Cross stacking between 4000 and 5000 is not supported.</p>
5320-24T-8XE	Switch Engine 32.7 Fabric Engine 9.0	<ul style="list-style-type: none"> • Monitor • Template- and device-level configuration • SSH Proxy* • Supplemental CLI* 	<ul style="list-style-type: none"> • Monitor • Template- and device-level configuration • SSH Proxy <p>Note: Cross stacking between 4000 and 5000 is not supported.</p>
5320-24P-8XE	Switch Engine 32.7 Fabric Engine 9.0	<ul style="list-style-type: none"> • Monitor • Template- and device-level configuration • SSH Proxy* • Supplemental CLI* 	<ul style="list-style-type: none"> • Monitor • Template- and device-level configuration • SSH Proxy <p>Note: Cross stacking between 4000 and 5000 is not supported.</p>
5320-48T-8XE	Switch Engine 32.7 Fabric Engine 9.0	<ul style="list-style-type: none"> • Monitor • Template- and device-level configuration • SSH Proxy* • Supplemental CLI* 	<ul style="list-style-type: none"> • Monitor • Template- and device-level configuration • SSH Proxy <p>Note: Cross stacking between 4000 and 5000 is not supported.</p>

Device Model	Latest Supported Release	Standalone Support	Stack Support
5320-48P-8XE	Switch Engine 32.7 Fabric Engine 9.0	<ul style="list-style-type: none"> • Monitor • Template- and device-level configuration • SSH Proxy* • Supplemental CLI* 	<ul style="list-style-type: none"> • Monitor • Template- and device-level configuration • SSH Proxy <p>Note: Cross stacking between 4000 and 5000 is not supported.</p>
5420F-24T-4XE	Switch Engine 32.7 Fabric Engine 9.0	<ul style="list-style-type: none"> • Monitor • Template- and device-level configuration • SSH Proxy* • Supplemental CLI* 	<ul style="list-style-type: none"> • Monitor • Template- and device-level configuration • SSH Proxy <p>Note: Cross stacking between 4000 and 5000 is not supported.</p>
5420F-24P-4XE	Switch Engine 32.7 Fabric Engine 9.0	<ul style="list-style-type: none"> • Monitor • Template- and device-level configuration • SSH Proxy* • Supplemental CLI* 	<ul style="list-style-type: none"> • Monitor • Template- and device-level configuration • SSH Proxy <p>Note: Cross stacking between 4000 and 5000 is not supported.</p>
5420F-24S-4XE	Switch Engine 32.7 Fabric Engine 9.0	<ul style="list-style-type: none"> • Monitor • Template- and device-level configuration • SSH Proxy* • Supplemental CLI* 	<ul style="list-style-type: none"> • Monitor • Template- and device-level configuration • SSH Proxy <p>Note: Cross stacking between 4000 and 5000 is not supported.</p>
5420F-48T-4XE	Switch Engine 32.7 Fabric Engine 9.0	<ul style="list-style-type: none"> • Monitor • Template- and device-level configuration • SSH Proxy* • Supplemental CLI* 	<ul style="list-style-type: none"> • Monitor • Template- and device-level configuration • SSH Proxy <p>Note: Cross stacking between 4000 and 5000 is not supported.</p>

Device Model	Latest Supported Release	Standalone Support	Stack Support
5420F-48P-4XE	Switch Engine 32.7 Fabric Engine 9.0	<ul style="list-style-type: none"> • Monitor • Template- and device-level configuration • SSH Proxy* • Supplemental CLI* 	<ul style="list-style-type: none"> • Monitor • Template- and device-level configuration • SSH Proxy <p>Note: Cross stacking between 4000 and 5000 is not supported.</p>
5420F-48P-4XL	Switch Engine 32.7 Fabric Engine 9.0	<ul style="list-style-type: none"> • Monitor • Template- and device-level configuration • SSH Proxy* • Supplemental CLI* 	<ul style="list-style-type: none"> • Monitor • Template- and device-level configuration • SSH Proxy
5420F-8W-16P-4XE	Switch Engine 32.7 Fabric Engine 9.0	<ul style="list-style-type: none"> • Monitor • Template- and device-level configuration • SSH Proxy* • Supplemental CLI* 	<ul style="list-style-type: none"> • Monitor • Template- and device-level configuration • SSH Proxy <p>Note: Cross stacking between 4000 and 5000 is not supported.</p>
5420F-16W-32P-4XE	Switch Engine 32.7 Fabric Engine 9.0	<ul style="list-style-type: none"> • Monitor • Template- and device-level configuration • SSH Proxy* • Supplemental CLI* 	<ul style="list-style-type: none"> • Monitor • Template- and device-level configuration • SSH Proxy <p>Note: Cross stacking between 4000 and 5000 is not supported.</p>
5420F-16MW-32P-4XE	Switch Engine 32.7 Fabric Engine 9.0	<ul style="list-style-type: none"> • Monitor • Template- and device-level configuration • SSH Proxy* • Supplemental CLI* 	<ul style="list-style-type: none"> • Monitor • Template- and device-level configuration • SSH Proxy <p>Note: Cross stacking between 4000 and 5000 is not supported.</p>

Device Model	Latest Supported Release	Standalone Support	Stack Support
5420M-24T-4YE	Switch Engine 32.7 Fabric Engine 9.0	<ul style="list-style-type: none"> Monitor Template- and device-level configuration SSH Proxy* Supplemental CLI* 	<ul style="list-style-type: none"> Monitor Template- and device-level configuration SSH Proxy <p>Note: Cross stacking between 4000 and 5000 is not supported.</p>
5420M-24W-4YE	Switch Engine 32.7 Fabric Engine 9.0	<ul style="list-style-type: none"> Monitor Template- and device-level configuration SSH Proxy* Supplemental CLI* 	<ul style="list-style-type: none"> Monitor Template- and device-level configuration SSH Proxy <p>Note: Cross stacking between 4000 and 5000 is not supported.</p>
5420M-48T-4YE	Switch Engine 32.7 Fabric Engine 9.0	<ul style="list-style-type: none"> Monitor Template- and device-level configuration SSH Proxy* Supplemental CLI* 	<ul style="list-style-type: none"> Monitor Template- and device-level configuration SSH Proxy <p>Note: Cross stacking between 4000 and 5000 is not supported.</p>
5420M-48W-4YE	Switch Engine 32.7 Fabric Engine 9.0	<ul style="list-style-type: none"> Monitor Template- and device-level configuration SSH Proxy* Supplemental CLI* 	<ul style="list-style-type: none"> Monitor Template- and device-level configuration SSH Proxy <p>Note: Cross stacking between 4000 and 5000 is not supported.</p>
5420M-16MW-32P-4YE	Switch Engine 32.7 Fabric Engine 9.0	<ul style="list-style-type: none"> Monitor Template- and device-level configuration SSH Proxy* Supplemental CLI* 	<ul style="list-style-type: none"> Monitor Template- and device-level configuration SSH Proxy <p>Note: Cross stacking between 4000 and 5000 is not supported.</p>

Device Model	Latest Supported Release	Standalone Support	Stack Support
5520-24W	Switch Engine 32.7 Fabric Engine 9.0	<ul style="list-style-type: none"> • Monitor • Template- and device-level configuration • SSH Proxy* • Supplemental CLI* 	<ul style="list-style-type: none"> • Monitor • Template- and device-level configuration • SSH Proxy <p>Note: Cross stacking between 4000 and 5000 is not supported.</p>
5520-24T	Switch Engine 32.7 Fabric Engine 9.0	<ul style="list-style-type: none"> • Monitor • Template- and device-level configuration • SSH Proxy* • Supplemental CLI* 	<ul style="list-style-type: none"> • Monitor • Template- and device-level configuration • SSH Proxy <p>Note: Cross stacking between 4000 and 5000 is not supported.</p>
5520-24T-ACDC	Switch Engine 32.7 Fabric Engine 9.0	<ul style="list-style-type: none"> • Monitor • Template- and device-level configuration • SSH Proxy* • Supplemental CLI* 	<p>Switch Engine:</p> <ul style="list-style-type: none"> • Monitor • Template- and device-level configuration • SSH Proxy <p>Note: Cross stacking between 4000 and 5000 is not supported.</p>
5520-24X-ACDC	Switch Engine 32.7 Fabric Engine 9.0	<ul style="list-style-type: none"> • Monitor • Template- and device-level configuration • SSH Proxy* • Supplemental CLI* 	<p>Switch Engine:</p> <ul style="list-style-type: none"> • Monitor • Template- and device-level configuration • SSH Proxy <p>Note: Cross stacking between 4000 and 5000 is not supported.</p>
5520-48W	Switch Engine 32.7 Fabric Engine 9.0	<ul style="list-style-type: none"> • Monitor • Template- and device-level configuration • SSH Proxy* • Supplemental CLI* 	<ul style="list-style-type: none"> • Monitor • Template- and device-level configuration • SSH Proxy <p>Note: Cross stacking between 4000 and 5000 is not supported.</p>

Device Model	Latest Supported Release	Standalone Support	Stack Support
5520-48T	Switch Engine 32.7 Fabric Engine 9.0	<ul style="list-style-type: none"> Monitor Template- and device-level configuration SSH Proxy* Supplemental CLI* 	<ul style="list-style-type: none"> Monitor Template- and device-level configuration SSH Proxy <p>Note: Cross stacking between 4000 and 5000 is not supported.</p>
5520-48T-ACDC	Switch Engine 32.7 Fabric Engine 9.0	<ul style="list-style-type: none"> Monitor Template- and device-level configuration SSH Proxy* Supplemental CLI* 	<ul style="list-style-type: none"> Monitor Template- and device-level configuration SSH Proxy <p>Note: Cross stacking between 4000 and 5000 is not supported.</p>
5520-12MW-36W	Switch Engine 32.7 Fabric Engine 9.0	<ul style="list-style-type: none"> Monitor Template- and device-level configuration SSH Proxy* Supplemental CLI* 	<ul style="list-style-type: none"> Monitor Template- and device-level configuration SSH Proxy <p>Note: Cross stacking between 4000 and 5000 is not supported.</p>
5520-48SE	Switch Engine 32.7 Fabric Engine 9.0	<ul style="list-style-type: none"> Monitor Template- and device-level configuration SSH Proxy* Supplemental CLI* 	<ul style="list-style-type: none"> Monitor Template- and device-level configuration SSH Proxy <p>Note: Cross stacking between 4000 and 5000 is not supported.</p>
5520-48SE-ACDC	Switch Engine 32.7 Fabric Engine 9.0	<ul style="list-style-type: none"> Monitor Template- and device-level configuration SSH Proxy* Supplemental CLI* 	<ul style="list-style-type: none"> Monitor Template- and device-level configuration SSH Proxy <p>Note: Cross stacking between 4000 and 5000 is not supported.</p>

Device Model	Latest Supported Release	Standalone Support	Stack Support
5520-24X	Switch Engine 32.7 Fabric Engine 9.0	<ul style="list-style-type: none"> • Monitor • Template- and device-level configuration • SSH Proxy* • Supplemental CLI* 	<p>Switch Engine:</p> <ul style="list-style-type: none"> • Monitor • Template- and device-level configuration • SSH Proxy <p>Note: Cross stacking between 4000 and 5000 is not supported.</p>
5720-24MW	Switch Engine 32.7 Fabric Engine 9.0	<ul style="list-style-type: none"> • Monitor • Template- and device-level configuration • SSH Proxy* • Supplemental CLI* 	<p>Switch Engine:</p> <ul style="list-style-type: none"> • Monitor • Template- and device-level configuration • SSH Proxy <p>Note: Cross stacking between 4000 and 5000 is not supported.</p>
5720-48MW	Switch Engine 32.7 Fabric Engine 9.0	<ul style="list-style-type: none"> • Monitor • Template- and device-level configuration • SSH Proxy* • Supplemental CLI* 	<p>Switch Engine:</p> <ul style="list-style-type: none"> • Monitor • Template- and device-level configuration • SSH Proxy <p>Note: Cross stacking between 4000 and 5000 is not supported.</p>
5720-24MXW	Switch Engine 32.7 Fabric Engine 9.0	<ul style="list-style-type: none"> • Monitor • Template- and device-level configuration • SSH Proxy* • Supplemental CLI* 	<p>Switch Engine:</p> <ul style="list-style-type: none"> • Monitor • Template- and device-level configuration • SSH Proxy <p>Note: Cross stacking between 4000 and 5000 is not supported.</p>

Device Model	Latest Supported Release	Standalone Support	Stack Support
5720-48MXW	Switch Engine 32.7 Fabric Engine 9.0	<ul style="list-style-type: none"> Monitor Template- and device-level configuration SSH Proxy* Supplemental CLI* 	<p>Switch Engine:</p> <ul style="list-style-type: none"> Monitor Template- and device-level configuration SSH Proxy <p>Note: Cross stacking between 4000 and 5000 is not supported.</p>
7520-48Y	Switch Engine 32.7 Fabric Engine 9.0	<p>Switch Engine:</p> <ul style="list-style-type: none"> Monitor Template- and device-level configuration SSH Proxy* Supplemental CLI* <p>Fabric Engine: Monitor</p>	<p>Switch Engine:</p> <ul style="list-style-type: none"> Monitor Template- and device-level configuration SSH Proxy <p>Note: Cross stacking between 4000 and 5000 is not supported.</p>
7520-48YE	Switch Engine 32.7 Fabric Engine 9.0	<p>Switch Engine:</p> <ul style="list-style-type: none"> Monitor Template- and device-level configuration SSH Proxy* Supplemental CLI* <p>Fabric Engine: Monitor</p>	<p>Switch Engine:</p> <ul style="list-style-type: none"> Monitor Template- and device-level configuration SSH Proxy <p>Note: Cross stacking between 4000 and 5000 is not supported.</p>

Device Model	Latest Supported Release	Standalone Support	Stack Support
7520-48XT	Switch Engine 32.7 Fabric Engine 9.0	Switch Engine: <ul style="list-style-type: none"> Monitor Template- and device-level configuration SSH Proxy* Supplemental CLI* Fabric Engine: Monitor	Switch Engine: <ul style="list-style-type: none"> Monitor Template- and device-level configuration SSH Proxy Note: Cross stacking between 4000 and 5000 is not supported.
7720-32c	Switch Engine 32.7 Fabric Engine 9.0	Switch Engine: <ul style="list-style-type: none"> Monitor Template- and device-level configuration SSH Proxy* Supplemental CLI* Fabric Engine: Monitor	Switch Engine: <ul style="list-style-type: none"> Monitor Template- and device-level configuration SSH Proxy Note: Cross stacking between 4000 and 5000 is not supported.



Note

* SSH Proxy and Supplemental CLI can be used for configuring additional parameters not currently available within template or device-level configurations.

ExtremeXOS

Device Model	Latest Supported Release	Standalone Support	Stack Support
X435-8P-2T-W	ExtremeXOS 32.6.3	<ul style="list-style-type: none"> Monitor Template- and device-level configuration SSH Proxy* Supplemental CLI* 	N/A
X435-24T-4S	ExtremeXOS 32.6.3	<ul style="list-style-type: none"> Monitor Template- and device-level configuration SSH Proxy* Supplemental CLI* 	N/A

Device Model	Latest Supported Release	Standalone Support	Stack Support
X435-24P-4S	ExtremeXOS 32.6.3	<ul style="list-style-type: none"> • Monitor • Template- and device-level configuration • SSH Proxy* • Supplemental CLI* 	N/A
X435-8T-4S	ExtremeXOS 32.6.3	<ul style="list-style-type: none"> • Monitor • Template- and device-level configuration • SSH Proxy* • Supplemental CLI* 	N/A
X435-8P-4S	ExtremeXOS 32.6.3	<ul style="list-style-type: none"> • Monitor • Template- and device-level configuration • SSH Proxy* • Supplemental CLI* 	N/A
X440-G2-12p-10GE4	ExtremeXOS 32.6.3	<ul style="list-style-type: none"> • Monitor • Template- and device-level configuration • SSH Proxy* • Supplemental CLI* 	<ul style="list-style-type: none"> • Monitor • Template- and device-level configuration • SSH Proxy* • Supplemental CLI*
X440-G2-12t-10GE4	ExtremeXOS 32.6.3	<ul style="list-style-type: none"> • Monitor • Template- and device-level configuration • SSH Proxy* • Supplemental CLI* 	<ul style="list-style-type: none"> • Monitor • Template- and device-level configuration • SSH Proxy* • Supplemental CLI*
X440-G2-24p-10GE4	ExtremeXOS 32.6.3	<ul style="list-style-type: none"> • Monitor • Template- and device-level configuration • SSH Proxy* • Supplemental CLI* 	<ul style="list-style-type: none"> • Monitor • Template- and device-level configuration • SSH Proxy* • Supplemental CLI*
X440-G2-24t-10GE4	ExtremeXOS 32.6.3	<ul style="list-style-type: none"> • Monitor • Template- and device-level configuration • SSH Proxy* • Supplemental CLI* 	<ul style="list-style-type: none"> • Monitor • Template- and device-level configuration • SSH Proxy* • Supplemental CLI*

Device Model	Latest Supported Release	Standalone Support	Stack Support
X440-G2-48p-10GE4	ExtremeXOS 32.6.3	<ul style="list-style-type: none"> • Monitor • Template- and device-level configuration • SSH Proxy* • Supplemental CLI* 	<ul style="list-style-type: none"> • Monitor • Template- and device-level configuration • SSH Proxy* • Supplemental CLI*
X440-G2-48t-10GE4	ExtremeXOS 32.6.3	<ul style="list-style-type: none"> • Monitor • Template- and device-level configuration • SSH Proxy* • Supplemental CLI* 	<ul style="list-style-type: none"> • Monitor • Template- and device-level configuration • SSH Proxy* • Supplemental CLI*
X450-G2-24p-GE4	ExtremeXOS 32.6.3	<ul style="list-style-type: none"> • Monitor • Template- and device-level configuration • SSH Proxy* • Supplemental CLI* 	Monitor
X450-G2-24p-10GE4	ExtremeXOS 32.6.3	<ul style="list-style-type: none"> • Monitor • Template- and device-level configuration • SSH Proxy* • Supplemental CLI* 	Monitor
X450-G2-48p-10GE4	ExtremeXOS 32.6.3	<ul style="list-style-type: none"> • Monitor • Template- and device-level configuration • SSH Proxy* • Supplemental CLI* 	Monitor
X460-G2-24p-10GE4	ExtremeXOS 32.6.3	<ul style="list-style-type: none"> • Monitor • Template- and device-level configuration • SSH Proxy* • Supplemental CLI* 	Monitor
X460-G2-48p-10GE4	ExtremeXOS 32.6.3	<ul style="list-style-type: none"> • Monitor • Template- and device-level configuration • SSH Proxy* • Supplemental CLI* 	Monitor

Device Model	Latest Supported Release	Standalone Support	Stack Support
X465-24W	ExtremeXOS 32.6.3	<ul style="list-style-type: none"> • Monitor • Template- and device-level configuration • SSH Proxy* • Supplemental CLI* 	Monitor
X465-48W	ExtremeXOS 32.6.3	<ul style="list-style-type: none"> • Monitor • Template- and device-level configuration • SSH Proxy* • Supplemental CLI* 	Monitor
X465-24MU	ExtremeXOS 32.6.3	<ul style="list-style-type: none"> • Monitor • Template- and device-level configuration • SSH Proxy* • Supplemental CLI* 	Monitor
X465-48P	ExtremeXOS 32.6.3	<ul style="list-style-type: none"> • Monitor • Template- and device-level configuration • SSH Proxy* • Supplemental CLI* 	Monitor
X465-24MU-24W	ExtremeXOS 32.6.3	<ul style="list-style-type: none"> • Monitor • Template- and device-level configuration • SSH Proxy* • Supplemental CLI* 	Monitor

**Note**

* SSH Proxy and Supplemental CLI can be used for configuring additional parameters not currently available within template or device-level configurations.

VOSS

Device Model	Latest Supported Release	Standalone Support	Stack Support
VSP7432CQ	VOSS 9.0	<ul style="list-style-type: none"> • Monitor • Template- and device-level configuration • SSH Proxy* • Supplemental CLI* 	Not supported
VSP7400-48Y	VOSS 9.0	<ul style="list-style-type: none"> • Monitor • Template- and device-level configuration • SSH Proxy* • Supplemental CLI* 	Not supported
VSP4900-48P	VOSS 9.0	<ul style="list-style-type: none"> • Monitor • Template- and device-level configuration • SSH Proxy* • Supplemental CLI* 	Not supported
VSP4900-24XE	VOSS 9.0	<ul style="list-style-type: none"> • Monitor • Template- and device-level configuration • SSH Proxy* • Supplemental CLI* 	Not supported
VSP4900-24S	VOSS 9.0	<ul style="list-style-type: none"> • Monitor • Template- and device-level configuration • SSH Proxy* • Supplemental CLI* 	Not supported
VSP4900-12MXU-12XE	VOSS 9.0	<ul style="list-style-type: none"> • Monitor • Template- and device-level configuration • SSH Proxy* • Supplemental CLI* 	Not supported

Device Model	Latest Supported Release	Standalone Support	Stack Support
XA1480	VOSS 8.10	<ul style="list-style-type: none"> • Monitor • Template- and device-level configuration • SSH Proxy* • Supplemental CLI* 	Not supported
XA1440	VOSS 8.10	<ul style="list-style-type: none"> • Monitor • Template- and device-level configuration • SSH Proxy* • Supplemental CLI* 	Not supported

**Note**

* SSH Proxy and Supplemental CLI can be used for configuring additional parameters not currently available within template or device-level configurations.

IQ Engine (Cloud Native)

Device Model	Latest Supported Release
SR2024 End of Life	IQ Engine 6.5.12
SR2024P End of Life	IQ Engine 6.5.12
SR2124P End of Life	IQ Engine 6.5.12
SR2148P End of Life	IQ Engine 6.5.12
SR2208P	FASTPATH 8.2.0.2 v1.0.1.29 ExtremeCloud IQ Agent 1.1.31
SR2224P	FASTPATH 8.2.0.2 v1.0.1.29 ExtremeCloud IQ Agent 1.1.31
SR2324P	FASTPATH 8.2.0.2 v1.0.1.29 ExtremeCloud IQ Agent 1.1.31
SR2348P	FASTPATH 8.2.0.2 v1.0.1.29 ExtremeCloud IQ Agent 1.1.31

Dell EMC

Device Model	Latest Supported Release
N3132PX	IQAgent 1.1.29
N3024EF	IQAgent 1.1.29
N3024EP	IQAgent 1.1.29
N3024ET	IQAgent 1.1.29
N3048EP	IQAgent 1.1.29
N3048ET	IQAgent 1.1.29
N3024	IQAgent 1.1.29
N3024F	IQAgent 1.1.29
N3024P	IQAgent 1.1.29
N3048	IQAgent 1.1.29
N3048P	IQAgent 1.1.29
N2128PX	IQAgent 1.1.29
N2024	IQAgent 1.1.29
N2024P	IQAgent 1.1.29
N2048	IQAgent 1.1.29
N2048P	IQAgent 1.1.29
N1524	IQAgent 1.1.29
N1524P	IQAgent 1.1.29
N1548	IQAgent 1.1.29
N1548P	IQAgent 1.1.29
N1108T-ON	IQAgent 1.1.29
N1108P-ON	IQAgent 1.1.29
N1124T-ON	IQAgent 1.1.29
N1124P-ON	IQAgent 1.1.29
N1148T-ON	IQAgent 1.1.29
N1148P-ON	IQAgent 1.1.29

Routers

Device Model	Latest Supported Release	Standalone Support
BR200WP End of Life	IQ Engine 6.9.7	
XR200P	IQ Engine 6.9.7	Platform support introduced with IQ Engine 6.9.2
XR600	IQ Engine 10.0.11	Platform support introduced with IQ Engine 9.0.1

Device Model	Latest Supported Release	Standalone Support
XR600P	IQ Engine 10.0.11	Platform support introduced with IQ Engine 9.0.1
VGVA	IQ Engine 6.9.7	

ExtremeCloud IQ Site Engine

ExtremeCloud IQ Site Engine Version	Supported Features
23.04.10	<ul style="list-style-type: none"> • License allocation • Device Statistics • Port Statistics • Unmanage/Manage device • Device Group to CCG mapping • Open Site Engine without SSO • Stack members
23.04.11	<ul style="list-style-type: none"> • License allocation • Device Statistics • Port Statistics • Unmanage/Manage device • Device Group to CCG mapping • Open Site Engine without SSO • Stack members
23.04.12	<ul style="list-style-type: none"> • License allocation • Device Statistics • Port Statistics • Unmanage/Manage device • Device Group to CCG mapping • Open Site Engine without SSO • Stack members
23.07.10	<ul style="list-style-type: none"> • License allocation • Device Assignment to the ExtremeCloud IQ Location • Device Statistics • Port Statistics • Unmanage/Manage device • Device Group to CCG mapping • Open Site Engine without SSO • Stack members • NAC details update for wireless end-systems

ExtremeCloud IQ Site Engine Version	Supported Features
23.07.11	<ul style="list-style-type: none"> • License allocation • Device Assignment to the ExtremeCloud IQ Location • Device Statistics • Port Statistics • Unmanage/Manage device • Device Group to CCG mapping • Open Site Engine without SSO • Stack members • NAC details update for wireless end-systems
23.07.12	<ul style="list-style-type: none"> • License allocation • Device Assignment to the ExtremeCloud IQ Location • Device Statistics • Port Statistics • Unmanage/Manage device • Device Group to CCG mapping • Open Site Engine without SSO • Stack members • NAC details update for wireless end-systems
23.07.13	<ul style="list-style-type: none"> • License allocation • Device Assignment to the ExtremeCloud IQ Location • Device Statistics • Port Statistics • Unmanage/Manage device • Device Group to CCG mapping • Open Site Engine without SSO • Stack members • NAC details update for wireless end-systems
23.11.10	<ul style="list-style-type: none"> • License allocation • Device Assignment to the ExtremeCloud IQ Location • Device Statistics • Port Statistics • Unmanage/Manage device • Device Group to CCG mapping • Open Site Engine without SSO • Stack members • NAC details update for wireless end-systems

ExtremeCloud IQ Site Engine Version	Supported Features
23.11.11	<ul style="list-style-type: none"> • License allocation • Device Assignment to the ExtremeCloud IQ Location • Device Statistics • Port Statistics • Unmanage/Manage device • Device Group to CCG mapping • Open Site Engine without SSO • Stack members • NAC details update for wireless end-systems
23.11.12	<ul style="list-style-type: none"> • License allocation • Device Assignment to the ExtremeCloud IQ Location • Device Statistics • Port Statistics • Unmanage/Manage device • Device Group to CCG mapping • Open Site Engine without SSO • Stack members • NAC details update for wireless end-systems
24.2.10	<ul style="list-style-type: none"> • License allocation • Device Assignment to the ExtremeCloud IQ Location • Device Statistics • Port Statistics • Unmanage/Manage device • Device Group to CCG mapping • Open Site Engine without SSO • Stack members • NAC details update for wireless end-systems • Wired end-systems reported to ExtremeCloud IQ
24.2.11	<ul style="list-style-type: none"> • License allocation • Device Assignment to the ExtremeCloud IQ Location • Device Statistics • Port Statistics • Unmanage/Manage device • Device Group to CCG mapping • Open Site Engine without SSO • Stack members • NAC details update for wireless end-systems • Wired end-systems reported to ExtremeCloud IQ

ExtremeCloud IQ Site Engine Version	Supported Features
24.2.12	<ul style="list-style-type: none"> • License allocation • Device Assignment to the ExtremeCloud IQ Location • Device Statistics • Port Statistics • Unmanage/Manage device • Device Group to CCG mapping • Open Site Engine without SSO • Stack members • NAC details update for wireless end-systems • Wired end-systems reported to ExtremeCloud IQ
24.2.13	<ul style="list-style-type: none"> • License allocation • Device Assignment to the ExtremeCloud IQ Location • Device Statistics • Port Statistics • Unmanage/Manage device • Device Group to CCG mapping • Open Site Engine without SSO • Stack members • NAC details update for wireless end-systems • Wired end-systems reported to ExtremeCloud IQ
24.02.14	<ul style="list-style-type: none"> • License allocation • Device Assignment to the ExtremeCloud IQ Location • Device Statistics • Port Statistics • Unmanage/Manage device • Device Group to CCG mapping • Open Site Engine with SSO • Stack members • NAC details update for wireless end-systems • Wired end-systems reported to ExtremeCloud IQ
24.02.15	<ul style="list-style-type: none"> • License allocation • Device Assignment to the ExtremeCloud IQ Location • Device Statistics • Port Statistics • Unmanage/Manage device • Device Group to CCG mapping • Open Site Engine with SSO • Stack members • NAC details update for wireless end-systems • Wired end-systems reported to ExtremeCloud IQ

ExtremeCloud IQ CoPilot

ExtremeCloud IQ CoPilot Feature	Minimum Firmware				
	IQ Engine	Switch Engine	Fabric Engine	Extreme XOS	VOSS
WiFi Efficiency	10.5.2*	--	--	--	--
WiFi Capacity	10.5.2*	--	--	--	--
PoE Stability	10.5.2*	32.1	8.6	32.1	8.6
Port Efficiency	10.5.2**	31.7	8.6	31.7	8.6
DFS Recurrence	10.5.2*	--	--	--	--
Adverse Traffic Patterns	10.5.2*	31.7	8.6	31.7	8.6
Wireless Connectivity Experience	10.5.2	--	--	--	--
Wired Connectivity Experience	--	31.7	8.6	31.7	8.6

*beta support from 10.4

**beta support from 10.5.1

ExtremeCloud A3

ExtremeCloud A3 Version	Supported Features
5.0.1-4	<ul style="list-style-type: none"> • Licensing • Status Monitoring • SSO • Client Details

Supported Browsers and Display Settings

Desktop and Mobile Browser Support



Note

ExtremeCloud IQ does not support 32-bit browsers.

Table 8: Desktop Browsers

Desktop Browsers	Version Supported
Chrome	v116
Edge	v115
Firefox	v115
Internet Explorer	Not supported

Table 8: Desktop Browsers (continued)

Desktop Browsers	Version Supported
Opera	v60
Safari	v13

Table 9: Mobile Browsers

Mobile Browsers	Version Supported
Android Webview	v73
Chrome for Android	v116
Edge	v79
Firefox for Android	v67
Opera for Android	v52
Safari for iOS	v13
Samsung Internet	Not supported

Display Settings

ExtremeCloud IQ supports display resolutions of 1280 x 1024 or higher.