



ExtremeCloud IQ Release Notes

23.6.2

9037933-03 Rev AA
November 2023



Copyright © 2023 Extreme Networks, Inc. All rights reserved.

Legal Notice

Extreme Networks, Inc. reserves the right to make changes in specifications and other information contained in this document and its website without prior notice. The reader should in all cases consult representatives of Extreme Networks to determine whether any such changes have been made.

The hardware, firmware, software or any specifications described or referred to in this document are subject to change without notice.

Trademarks

Extreme Networks and the Extreme Networks logo are trademarks or registered trademarks of Extreme Networks, Inc. in the United States and/or other countries.

All other names (including any product names) mentioned in this document are the property of their respective owners and may be trademarks or registered trademarks of their respective companies/owners.

For additional information on Extreme Networks trademarks, see: www.extremenetworks.com/about-extreme-networks/company/legal/trademarks

Open Source Declarations

Some software files have been licensed under certain open source or third-party licenses.

End-user license agreements and open source declarations can be found at: <https://www.extremenetworks.com/support/policies/open-source-declaration/>



Table of Contents

General Release Information.....	4
Current Release: 23.6.2.....	4
Minor Release 2: 23.6.2.3 New Features and Addressed Issues.....	4
Minor Release 1: 23.6.1.4 Addressed Issues.....	5
ExtremeCloud IQ Public IP Address Blocks.....	5
Supported IQ Engine 10.6.4 Software.....	6
New Features in 23.6.0.48.....	7
Addressed Issues in 23.6.0.48.....	11
Known Issues in 23.6.0.48.....	13
Device Support Information.....	17
Controllers.....	17
Access Points.....	18
Universal Hardware.....	18
IQ Engine (Cloud Native).....	19
ExtremeWireless WiNG.....	20
Extreme Wireless.....	21
Switches.....	22
Universal Hardware.....	22
ExtremeXOS.....	28
VOSS.....	31
IQ Engine (Cloud Native).....	32
Dell EMC.....	33
Routers.....	34
ExtremeCloud IQ - Site Engine.....	34
ExtremeCloud IQ CoPilot.....	36
ExtremeCloud A3.....	37
Supported Browsers and Display Settings.....	37
Desktop and Mobile Browser Support.....	37
Display Settings.....	38



General Release Information

Current Release: 23.6.2

November 2023

Minor Release 2: 23.6.2.3 New Features and Addressed Issues

Table 1: New Features

Feature ID	Feature Name	Description
XIQ-20782	CoPilot UX Redesign – Connectivity Experience	The CoPilot > Connectivity Insights tab uses widgets and filters to present relevant data about wired and wireless connectivity.
XIQ-22895	CoPilot – Deprecation Notice	A new banner appears on the CoPilot dashboard only. This banner informs customers that the Legacy View will be deprecated in the next major ExtremeCloud IQ release.
XIQ-22899	CoPilot - Default to CoPilot New View	With this release the new CoPilot UX (New View) is the default view for customers. Customers can still choose to switch to the Legacy View and this selection is persistent across logins.
XIQ-19801	New XAPI for AirDefense	New XAPI is scalable for AirDefense Polling.

Table 2: Addressed Issues

Issue ID	Description
XESS-1151	Rogue AP queue is fixed to reduce temporary false rogue alarms.

Minor Release 1: 23.6.1.4 Addressed Issues

Table 3: Addressed Issues

Issue ID	Description
CFD-10040 (02857110)	Addressed an issue where a newly created account was redirecting the user to the incorrect data center.
XIQ-25142	Adjusted the wording of proactive license expiration email messages sent to notify customers that their device licenses or CoPilot licenses are due to be renewed.
XIQ-25247	Fixed an issue where the Onboard Devices progress icon kept spinning due to a GUI error.

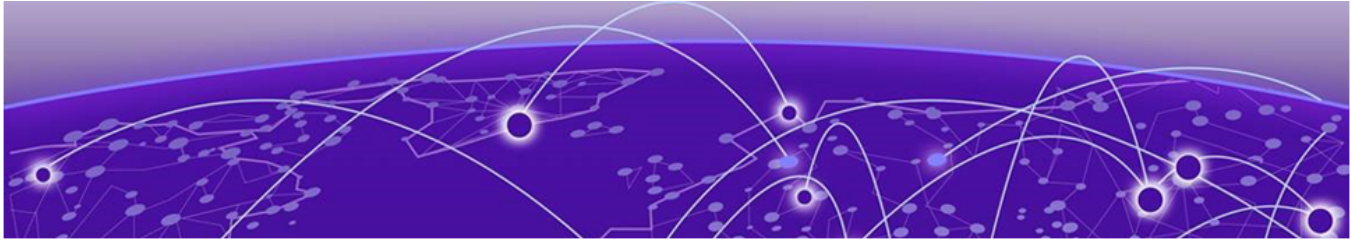
ExtremeCloud IQ Public IP Address Blocks

Data Center	IP Block	Addresses and Ports
Global Data Center (GDC)	44.234.22.92/30 18.194.95.0/28 34.253.190.192/26 3.234.248.0/27	
US East (VA)	34.202.197.0/26 44.192.245.0/26 3.234.248.0/27	Firewall Address and Port Information
US East 2 (VA2)	34.202.197.0/26 44.192.245.0/26 3.234.248.0/27	Firewall Address and Port Information
Ireland (IE)	34.253.190.192/26	Firewall Address and Port Information
India (IN)	13.232.67.8/29 3.6.70.64/29	Firewall Address and Port Information
Germany (FRA)	3.67.81.96/27 18.194.95.0/28	Firewall Address and Port Information
Sweden (SE)	13.48.186.224/29 13.48.4.184/29	Firewall Address and Port Information
Brazil (BR)	18.228.70.16/28	Firewall Address and Port Information
Australia (AUS)	13.210.3.192/28	Firewall Address and Port Information
Japan (JP)	18.176.203.112/29 13.231.6.232/29	Firewall Address and Port Information
Azure, US East (AVA)	52.226.89.112/28	Firewall Address and Port Information
Bahrain (BH)	15.184.70.208/28	Firewall Address and Port Information
The Netherlands (NL-GCP)	34.91.82.64/27	Firewall Address and Port Information

Data Center	IP Block	Addresses and Ports
US-Iowa (IA-GCP)	34.67.130.64/27	Firewall Address and Port Information
Switzerland (ACH)	51.107.1.192/28	Firewall Address and Port Information
Azure, Canada Central (ACA)	20.151.64.48/28	Firewall Address and Port Information
Singapore (SG-GCP)	34.87.158.80/28	Firewall Address and Port Information
United Kingdom (UK-AGB)	51.143.233.80/28	Firewall Address and Port Information

Supported IQ Engine 10.6.4 Software

See the [Release Notes](#) for the current IQ Engine version that ExtremeCloud IQ supports.



New Features in 23.6.0.48

Device OS Support

There is no new device operating system support in this release.

New Hardware Support

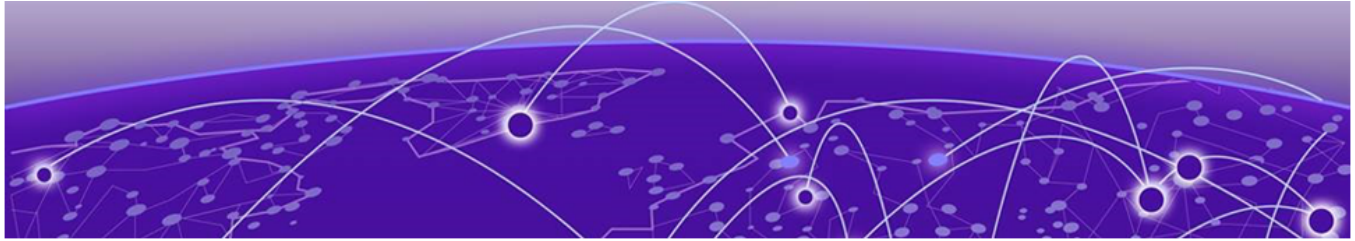
There is no new hardware support in this release.

Feature ID	Feature	Description
XIQ-8138	Enhanced Packet Capture support for IQE devices	Enhanced Packet Capture capabilities are now supported on AP5010/AP5010U, AP4000/AP4000U, and AP3000/AP3000X models running IQ Engine OS 10.6.4. Go to Manage > Client Monitor & Diagnosis > Packet Capture . Basic Packet Capture capabilities available under Tools has changed.
XIQ-10898	Update AVC Signature to the latest version and restrict platforms.	The application name detection signatures are now updated.
XIQ-12820	Device Credential Account Name Configuration Consolidation	ExtremeCloud IQ now detects if Switch Engine and Fabric Engine devices have device account name configurations which are out of sync with assigned network policy configurations when network policy and configuration updates are performed. This feature requires a minimum version of Switch Engine 32.5 and Fabric Engine 8.10.1 to be installed.
XIQ-13815	Expose new Alarms and Events as xAPI endpoints	The XIQ API now supports management and configuration of alarm notifications and notification policies. For more information, see https://developer.extremecloudiq.com .
XIQ-14034	Thread Support on IQE	IoT Thread application is now supported on AP5010/AP5010U running IQ Engine. Go to Configure > Common Objects > IoT Profiles .

Feature ID	Feature	Description
XIQ-14286	Support 5520 Universal HW with ACDC power supplies	Added support for onboarding, monitoring, persona change, and management of device licenses of 5520-24T-ACDC, 5520-24X-ACDC, 5520-48T-ACDC, and 5520-48SE-ACDC Universal Hardware running Switch Engine or Fabric Engine persona. Network policy assignment and configuration including stacking support is available only when running the Switch Engine persona.
XIQ-14519	Support 7520 SKU with MACsec Universal HW in XIQ	Added support for 7520-48YE Universal Hardware running Switch Engine or Fabric Engine NOS. Added support for onboarding, monitoring, persona change, and management of device licenses of 7520-48YE Universal Hardware running Switch Engine or Fabric Engine personas. Network policy assignment and configuration is available for 7520-48YE only when running the Switch Engine persona.
XIQ-14577	Common Object AP Templates Optimization	AP Template loading times are now improved.
XIQ-16150	Common Object Switch Templates Optimization	Switch Template loading times are now improved.
XIQ-17035	AP3000 Open for Ecuador without 6E	The AP3000 is now open for Ecuador without 6E.
XIQ-17042	Imago Tag - Cloud Support for remaining APs - Template and Device Override	There is now ses-imagotag support for AP3000 and AP4000.
XIQ-17043	AP3000X Open for Ecuador without 6E	The AP3000X is now open for Ecuador without 6E.
XIQ-17375	Improved Audit Log Functionality	<ul style="list-style-type: none"> • Audit Logs now have a maximum page size of 500 entries per page. • The log download dialog is now improved to include downloading filtered log entries. • Added the functionality to filter by date or time within 30 days of the current date.
XIQ-18430	Dominican Republic - AP5050 update to update power settings and channels from US to Canada	AP5050 channels 120-128 are now deleted and power is reduced on channels 36-48 to match Canadian levels.

Feature ID	Feature	Description
XIQ-19540	AP3000 Open for tier 3 UK countries without 6E	The AP3000 is now open for the following countries without 6E: <ul style="list-style-type: none"> • Brunei • Cambodia • Malawi • Namibia • Yemen
XIQ-19541	AP3000X Open for tier 3 UK countries without 6E	The AP3000X is now open for the following countries without 6E: <ul style="list-style-type: none"> • Brunei • Cambodia • Malawi • Yemen
XIQ-19801	New XAPI for AirDefense	The XAPI is updated for AirDefense polling.
XIQ-20111	Site definitions and requirements	Introducing the Site folder type as the immediate parent to buildings, replacing the Generic folder type as the building parent. Now Site is the only parent type of buildings. Existing buildings that were previously assigned a Generic parent are now assigned to a Site. All buildings must be a child to a Site. Buildings with no assigned parent folder must be manually assigned to a Site. A Site is associated with either the root node or associated with a Site Group. The Site Group can only have a single Site Group child, or a single Site child. Scripts that call the <code>GET /locations/tree</code> API node need to be modified, changing <code>type="Location"</code> to <code>type="Site"</code>
XIQ-20782	CoPilot UX Redesign	CoPilot data is reorganized into two tabs— Anomalies and Connectivity Insights .
XIQ-21021	AP3000 Open for ETSI countries with 6E	The AP3000X is now open for the following ETSI countries with 6E: <ul style="list-style-type: none"> • French Polynesia • French Southern Territories • Moldova • Monaco • Saint Martin (French) • Vatican City

Feature ID	Feature	Description
XIQ-21022	AP3000X Open for ETSI countries with 6E	The AP3000X is now open for the following ETSI countries with 6E: <ul style="list-style-type: none"> • French Polynesia • French Southern Territories • Moldova • Monaco • Saint Martin (French) • Vatican City
XIQ-21081	VOSS IQ Engine 0.7.4 Images, Contents, and MD5sums	Fabric Engine now supports IQ Engine 0.7.4.
XIQ-21084	AP5010 for Dominican Republic Enable 6E Radio	AP5010 now supports 6Ghz in the Dominican Republic.
XIQ-21159	Enable CoPilot, agree to being contacted by Extreme Networks	When CoPilot is enabled without a CoPilot license in the pool, the customer must agree to be contacted for feedback and education purposes.
XIQ-21187	Enable 6E Radio for Mexico	6Ghz Radio is now enabled for Mexico.
XIQ-21856	Add Albania for WiFi 6 APs - AP305C	Albania is now supported on AP305C.
XIQ-22844	EXOS ExtremeCloud IQ Agent 0.7.41 support	Switch Engine now supports ExtremeCloud IQ Agent 0.7.41.
XIQ-23072	Digital Twin image and features support	Fabric Engine Digital Twin images are removed. The following SKUs will still be available to choose when running Switch Engine version 32.4.1.10 Digital Twin: <ul style="list-style-type: none"> • 5320-48P-8XE • 5420-48W-4YE • 5520-48W • 5720-48MXW • 7520-48Y-8C • 7720-32C <p>The options to create a digital twin from a real Universal Hardware device as well as pair, and clone options are no longer available.</p>
XIQ-23990	EXOS/Switch Engine 32.5.1-patch1-5 Onboard, Monitor, Config (Drag/Drop) Support	XIQ now supports Switch Engine and ExtremeXOS 32.5.1-patch1-5 image using the local image management option.



Addressed Issues in 23.6.0.48

Issue ID	Description
CFD-9025	<p>Previously, Switch Engine and ExtremeXOS devices with host name changes performed and saved prior to device updates were displaying the old name. In some cases the hostname defined by ExtremeCloud IQ would not be visible.</p> <p>The following issues have been resolved:</p> <ul style="list-style-type: none"> • If the hostname is changed when a policy is assigned, then the hostname change is flagged as a delta audit and a configuration update is required to perform changes on the switch. • If the switch is onboarded in the default state with the default hostname, then the floor-partial-serial number format will be applied unless the customer updates the hostname. • If the switch is onboarded not in the default state, then the hostname currently defined on the switch will be displayed until its changed.
CFD-9954 (02846572)	Fixed an issue where upgrading an X440-G2 non-PoE SKU to release 32.5 or greater resulted in device update failures.
XESS-1151	Addressed Rogue AP queue, reducing temporary false rogue alarms.
XIQ-19574	Previously, the VOSS switch failed to connect to Production XIQ with error GlobalRouter CLOUD_AGENT INFO HiveAgent does not exist . This issue is now resolved.
XIQ-20360	<p>The following actions are no longer available for Unmanaged devices:</p> <ul style="list-style-type: none"> • Manage > Devices > Utility • Manage > Devices > Change Network Policy • Manage > Devices > Change Location • Manage > Devices > Device 360 > Configuration Change • Manage > Devices > Actions > All actions except Change Management Status
XIQ-20939	Previously, editing the zone name resulted in showing no devices in the zone. This issue is now resolved.
XIQ-20952	Previously, a hyperlink for Switch Engine under manage > clients for devices managed by ExtremeCloud IQ linked to the wrong page. The hyperlink now navigates to the appropriate manage > device > monitoring page.

Issue ID	Description
XIQ-21271	Multi-Port Type assignment within a switch template now displays port type names in alphanumerical order format.
XIQ-21383	Previously, XIQ was not generating the Multicast Rate Limit command for aggregate ports on AP3000. This issue is now resolved.



Known Issues in 23.6.0.48

The following table lists known product issues. Issues are grouped according to ID prefix and sorted within their group with the most recently logged issue listed first (Issue IDs are in descending order).

Issue ID	Description
XIQ-24848	After onboarding a stack and assigning a template, the configuration delta may display the error message: "Cannot find device stack template." A configuration update can be performed and any subsequent configuration changes to the stack will properly display configuration delta. The delta configuration error message for newly onboarded stacks will be resolved in a future release.
XIQ-22574	XIQ accounts which are restricted to only see devices in certain locations currently do not see devices which have no location set. Workaround: Prevent the roles with access to a subset of locations from having access to devices that are not placed in any locations.
XIQ-22462	Under certain conditions, if there is configuration related to IPv6 on Switch Engine when running software version 32.5.1.5, a configuration update may fail. Workaround: Upgrade to 32.5.1.5 Patch1-1 and then proceed with pushing a device configuration update.
XIQ-21943	When an account goes into License Violation state, the user interface may not be locked until the page is refreshed or the user logs out and logs in again. There is no notification to the user, and some actions do not work in the License Violation state.
XIQ-20194	For ExtremeCloud IQ 23.4 (and older releases), we recommend updating custom filter criteria from CoPilot Expired to CoPilot Unlicensed on the Manage > Devices page.
XIQ-19572	Upon upgrade from ExtremeCloud IQ 23.2.x to 23.3.x, the Manage > Devices page does not retain settings from 23.2.x for the os option under the Column Picker drop-down list. To revert to the 23.2.x page view, the os option must be reselected, and the column repositioned on the page, as desired.

Issue ID	Description
XIQ-18679	Onboarding of Switch Engine instances may result in incorrect license violations reported in ExtremeCloud IQ due to Navigator license consumption when plenty of ExtremeCloud IQ CoPilot licenses are available. Devices may need to be unmanaged and remanaged to remedy the situation.
XIQ-18544	When VGVA configurations fail due to using the same WPA3 SSID in a single network policy, move the APs associated with the WPA3 enabled SSID to a different profile.
XIQ-18175	The question mark character is allowed in the Global Setting > Device Management Settings password text box, but it cannot be typed into the Policy > Device Credentials password text box. Note: Switch Engine and Fabric Engine do not support the question mark character. A separate password can be created for Switch Engine and Fabric Engine at device-level configuration.
XIQ-17024	The Cable Test action is not supported for x435 switch running the 32.3 software image due to limitations with storage space on the switch.
XIQ-16652	The AP3000x/AP3000/AP5010U Auto Provision Update is failing with country code discover timeout.
XIQ-12503	Network 360 shows Unknown Error when All Access Points Applications is selected and the user is selecting both ExtremeWireless WiNG and IQ Engine devices. Workaround: Deselect ExtremeWireless WiNG devices.
XIQ-11984	For AP3000X/AP3000 and AP5050U/AP5050D devices operating in dual mode, under Manage > Devices > Interface Settings > Modify Multiple : Interface Settings > Wireless Interfaces , the radio Operating Mode drop-down list includes a 5 GHz option which can be selected; however, this option is not supported with this configuration.
XIQ-9848	Duplicate entries in the Client Trail when a client moves away from the AP then comes back.
XIQ-9847	The Roam Time entry in the Client Trail does not always display the correct device name .
XIQ-7312	5720 Switch Engine devices were showing as connected during the reboot process.
XIQ-5700	Client Trail only showed the currently connected AP when the client roamed to a different AP from the onboarded ExtremeCloud IQ Controller.
CFD-8946 (02710778, 02748750)	License descriptions are automatically cleared when the "ACTIVATED" status is updated.
CFD-8678 (02688797)	VLAN probe category counts are not always accurate.
CFD-8677 (02688860)	VLAN probe shows the results of a successful probe while the status says it is still running.

Issue ID	Description
CFD-8598 (02670900)	Cannot enable Guest Essentials via Configure > Guest Essentials Users . Workaround: From ExtremeCloud IQ, go to Essentials > Extreme Guest .
CFD-8216 (02634924)	When Air Defense Essentials is enabled, Access Points running IQ Engine 10.4.3 or earlier versions cannot receive a delta configuration push from ExtremeCloud IQ. Upgrade the access points to the latest IQ Engine supported version.
APC-41057	Legend labels on the switch stack graph sometimes disappear when attempting to download or print the graph. Workaround: <ol style="list-style-type: none"> 1. Only download one graph at a time, and open the downloaded file before choosing to download again. 2. The SVG option is the most stable format; PNG, JPG, and PDF have spacing issues on the legend section.
APC-22297	ExtremeCloud IQ displays PoE configuration controls for all ports on the Dell EMC N1108P switch, even though the N1100P only supports PoE on ports 1 - 4.
APC-21456	In rare cases, ExtremeCloud IQ does not upload some IGMP sub-commands successfully. Workaround: Use the Supplemental CLI to upload commands when necessary.
APC-20760	ExtremeCloud IQ reports any wired devices that are connected to an SR2208P switch as unidentified.
APC-20734	When a configuration upload is unsuccessful because of improper Supplemental CLI commands, hovering the mouse over the upload message does not result in a tool tip containing the problematic CLI command.
APC-20647	ExtremeCloud IQ does not successfully upload configurations that contain an external RADIUS server.
APC-20172	The option to configure SSH wrongly displays when attempting bulk edits of multiple switches or of switches and APs together. However, when the admin is performing bulk edits of multiple APs only, ExtremeCloud IQ correctly hides the SSH configuration options.
DAPC-385	ExtremeCloud IQ sometimes displays the incorrect port number in the tool tip when the admin mouses over a stack port on the Port Status page.
DAPC-382	When an administrator attaches a switch stack to HiveManager Virtual Appliance , only the primary switch is auto-detected. The administrator must subsequently onboard the remaining stack members manually.

Issue ID	Description
DAPC-240D	<p>When the primary switch is removed from a stack, the stack retains the old MAC address. As a result, the primary switch (now a standalone switch), and the original stack both have the same MAC address, which ExtremeCloud IQ cannot resolve.</p> <p>Workaround: Before removing the primary switch from a stack with the intention of continuing to use the primary as a standalone switch, perform the following steps:</p> <ol style="list-style-type: none"> 1. Remove the stack from ExtremeCloud IQ. 2. Perform the related command line operations on the stack to remove the primary switch. 3. Add the stack and the standalone switch to ExtremeCloud IQ again.
DAPC-222	<p>After an admin uploads a stack template to a switch stack, ExtremeCloud IQ displays [-No Change-] in the Stack Template drop-down list, rather than the new template name.</p>
DAPC-186	<p>ExtremeCloud IQ does not display the management VLAN information in the Devices table.</p>
DAPC-73	<p>When resetting multiple switches simultaneously to factory default settings, ExtremeCloud IQ erroneously reports that the reset was unsuccessful.</p>



Device Support Information

- [Controllers](#) on page 17
- [Access Points](#) on page 18
- [Switches](#) on page 22
- [Routers](#) on page 34
- [ExtremeCloud IQ - Site Engine](#) on page 34
- [ExtremeCloud IQ CoPilot](#) on page 36
- [ExtremeCloud A3](#) on page 37
- [Supported Browsers and Display Settings](#) on page 37

This section lists the devices that ExtremeCloud IQ supports and includes the latest version of the software that each device supports.

Controllers

Device Model	Latest Supported Release	Comments
E1120	XIQC 10.07.01	Monitor only
E2120	XIQC 10.07.01	Monitor only
E2122	XIQC 10.07.01	Monitor Only
E3120	XIQC 10.07.01	Monitor only
VE6120	XIQC 10.07.01	Monitor only
VE6120H	XIQC 10.05.02	Monitor only
VE6120K	XIQC 10.07.01	Monitor Only
VE6125	XIQC 10.07.01	Monitor only
VE6125K	XIQC 10.07.01	Monitor Only
NX5500	WiNG OS 7.9.2.0	Monitor only
NX7500 Series	WiNG OS 7.9.2.0	Monitor only
NX9500 Series	WiNG OS 7.7.1.5	Monitor only
NX9600 Series	WiNG OS 7.9.2.0	Monitor only
RFS4000 Series	WiNG OS 5.9.7.1	Monitor only
RFS6000 Series	WiNG OS 5.9.1.8	Monitor only
RFS7000 Series	WiNG OS 5.8.6.11	Monitor only
VX9000	WiNG OS 7.9.2.0	Monitor only

Access Points

Access Point information is provided in the following sections:

- [Universal Hardware](#) on page 18
- [IQ Engine \(Cloud Native\)](#) on page 19
- [ExtremeWireless WiNG](#) on page 20
- [Extreme Wireless](#) on page 21

Universal Hardware

Device Model	Latest Supported Release	Comments
AP302W	IQ Engine 10.6.4 WiNG OS 7.9.2.0 AP 10.7.1	Platform support introduced with IQ Engine 10.3.1
AP305C	IQ Engine 10.6.4 WiNG OS 7.9.2.0 AP 10.7.1	Platform support introduced with IQ Engine 10.1.1
AP305C-1	IQ Engine 10.6.4 WiNG OS 7.9.2.0 AP 10.7.1	Platform support introduced with IQ Engine 10.4.6
AP305CX	IQ Engine 10.6.4 WiNG OS 7.9.2.0 AP 10.7.1	Platform support introduced with IQ Engine 10.1.1
AP3000	IQ Engine 10.6.4 AP 10.7.1	Platform support introduced with IQ engine 10.6.1
AP3000X	IQ Engine 10.6.4	Platform support introduced with IQ Engine 10.6.4
AP4000	IQ Engine 10.6.4 AP 10.7.1	Platform support introduced with IQ Engine 10.4.1
AP4000-1	IQ Engine 10.6.4 AP 10.7.1	Platform support introduced with IQ Engine 10.4.2
AP410C	IQ Engine 10.6.4 WiNG OS 7.9.2.0 AP 10.7.1	Platform support introduced with IQ Engine 10.1.2
AP410C-1	IQ Engine 10.6.4 WiNG OS 7.9.2.0 AP 10.7.1	Platform support introduced with IQ Engine 10.4.6
AP460C	IQ Engine 10.6.4 WiNG OS 7.9.2.0 AP 10.7.1	Platform support introduced with IQ Engine 10.1.2

Device Model	Latest Supported Release	Comments
AP460S6C	IQ Engine 10.6.4 WiNG OS 7.9.2.0 AP 10.7.1	Platform support introduced with IQ Engine 10.1.2
AP460S12C	IQ Engine 10.6.4 WiNG OS 7.9.2.0 AP 10.7.1	Platform support introduced with IQ Engine 10.1.2
AP650	IQ Engine 10.6.4	Platform support introduced with IQ Engine 10.6.4
AP5010	IQ Engine 10.6.4 AP 10.7.1 WiNG OS 7.9.2.0	Platform support introduced with IQ Engine 10.5.1
AP5010C	IQ Engine 10.6.4	Platform support introduced with IQ Engine 10.6.4
AP5010CX	IQ Engine 10.6.4	Platform support introduced with IQ Engine 10.6.4
AP5050U	IQ Engine 10.6.4 AP 10.7.1	Platform support introduced with IQ Engine 10.5.3
AP5050D	IQ Engine 10.6.4 AP 10.7.1	Platform support introduced with IQ Engine 10.5.3

IQ Engine (Cloud Native)

Device Model	Latest Supported Release	Comments
AP630	IQ Engine 10.6.2	Platform support introduced with IQ Engine 10.0.1. End of Life Information
AP650	IQ Engine 10.6.4	Platform support introduced with IQ Engine 10.0.1. End of Life Information
AP650X	IQ Engine 10.6.4	Platform support introduced with IQ Engine 10.0.1. End of Life Information
AP1130	IQ Engine 10.5.3	Platform support introduced with IQ Engine 8.2.1. End of Life Information
AP550	IQ Engine 10.5.3	Platform support introduced with IQ Engine 7.0.3. End of Life Information
AP390	IQ Engine 6.5.16	End of Life Information
AP370	IQ Engine 6.5.16	End of Life Information
AP350	IQ Engine 6.5.16	End of Life Information

Device Model	Latest Supported Release	Comments
AP340	IQ Engine 6.5.10	End of Life Information
AP330	IQ Engine 6.5.16	End of Life Information
AP320	IQ Engine 6.5.10	End of Life Information
AP250	IQ Engine 10.6.1	Platform support introduced with IQ Engine 7.0.2.
AP245X	IQ Engine 10.5.3	Platform support introduced with IQ Engine 7.0.2. End of Life Information
AP230	IQ Engine 10.5.3	Platform support introduced with IQ Engine 8.2.1. End of Life Information
AP170	IQ Engine 6.5.16	End of Life Information
AP150W	IQ Engine 10.6.1	Platform support introduced with IQ Engine 8.1.1.
AP141	IQ Engine 6.5.16	End of Life Information
AP130	IQ Engine 10.6.1	Platform support introduced with IQ Engine 8.2.1. End of Life Information
AP122	IQ Engine 10.6.1	Platform support introduced with IQ Engine 7.0.4.
AP122X	IQ Engine 10.5.3	Platform support introduced with IQ Engine 8.2.1. End of Life Information
AP121	IQ Engine 6.5.16	End of Life Information
AP120	IQ Engine 6.5.10	End of Life Information
Atom AP30	IQ Engine 10.6.1	Platform support introduced with IQ Engine 8.3.2.
AP510C/CX	IQ Engine 10.6.4	Platform support introduced with IQ Engine 10.0.8

ExtremeWireless WiNG

Device Model	Latest Supported Release	Comments
AP560i	WiNG OS 7.9.2.0	Monitor only
AP560h	WiNG OS 7.9.2.0	Monitor only
AP505	WiNG OS 7.9.2.0	Monitor only
AP510i	WiNG OS 7.9.2.0	Monitor only
AP510i-1	WiNG OS 7.9.2.0	Monitor only
AP460i/e	WiNG OS 7.9.2.0	Monitor only
AP410i/e	WiNG OS 7.9.2.0	Monitor only
AP410i-1	WiNG OS 7.9.2.0	Monitor only
AP360i/e	WiNG OS 7.9.2.0	Monitor only
AP310i/e	WiNG OS 7.9.2.0	Monitor only
AP310i/e-1	WiNG OS 7.9.2.0	Monitor Only
AP8533	WiNG OS 7.7.1.8	Monitor only

Device Model	Latest Supported Release	Comments
AP8432	WiNG OS 7.7.1.8	Monitor only
AP8232	WiNG OS 5.9.1.8	Monitor only
AP8222	WiNG OS 5.8.6.11	Monitor only
AP8163	WiNG OS 5.9.7.1	Monitor only
AP8132	WiNG OS 5.9.1.8	Monitor only
AP8122	WiNG OS 5.9.1.8	Monitor only
AP7662	WiNG OS 7.7.1.8	Monitor only
AP7632	WiNG OS 7.7.1.8	Monitor only
AP7622	WiNG OS 5.9.7.1	Monitor only
AP7612	WiNG OS 7.7.1.8	Monitor only
AP7602	WiNG OS 5.9.7.1	Monitor only
AP7562	WiNG OS 7.7.1.8	Monitor only
AP7532	WiNG OS 7.7.1.8	Monitor only
AP7522	WiNG OS 7.7.1.8	Monitor only
AP7502	WiNG OS 5.9.7.1	Monitor only
AP7161	WiNG OS 5.9.1.8	Monitor only
AP7131	WiNG OS 5.8.6.11	Monitor only
AP6562	WiNG OS 5.9.1.8	Monitor only
AP6532	WiNG OS 5.9.1.8	Monitor only
AP6522	WiNG OS 5.9.1.8	Monitor only
AP6521	WiNG OS 5.9.1.8	Monitor only
AP6511	WiNG OS 5.8.6.11	Monitor only

Extreme Wireless

Device Model	Latest Supported Release	Comments
AP3965	ExtremeWireless 10.51	Monitor only
AP3935	ExtremeWireless 10.51	Monitor only
AP3917	ExtremeWireless 10.51	Monitor only
AP3916C	ExtremeWireless 10.51	Monitor only
AP3915	ExtremeWireless 10.51	Monitor only
AP3912	ExtremeWireless 10.51	Monitor only
SA201	ExtremeWireless 10.51	Monitor only

Switches

Switch information is provided in the following sections:

- [Universal Hardware](#) on page 22
- [ExtremeXOS](#) on page 28
- [VOSS](#) on page 31
- [IQ Engine \(Cloud Native\)](#) on page 32
- [Dell EMC](#) on page 33

For the latest release notes for Fabric Engine and Switch Engine, see the [Extreme Networks Documentation Site](#).

Universal Hardware

Device Model	Latest Supported Release	Standalone Support	Stack Support
7520-48Y	Switch Engine 32.5 Fabric Engine 8.10	Switch Engine: <ul style="list-style-type: none"> • Monitor • Template- and device-level configuration • SSH Proxy* • Supplemental CLI* Fabric Engine: Monitor	Switch Engine: <ul style="list-style-type: none"> • Monitor • Template- and device-level configuration • SSH Proxy
7520-48YE	Switch Engine 32.5 Fabric Engine 8.10	Switch Engine: <ul style="list-style-type: none"> • Monitor • Template- and device-level configuration • SSH Proxy* • Supplemental CLI* Fabric Engine: Monitor	Switch Engine: <ul style="list-style-type: none"> • Monitor • Template- and device-level configuration • SSH Proxy
7520-48XT	Switch Engine 32.5 Fabric Engine 8.10	Switch Engine: <ul style="list-style-type: none"> • Monitor • Template- and device-level configuration • SSH Proxy* • Supplemental CLI* Fabric Engine: Monitor	Switch Engine: <ul style="list-style-type: none"> • Monitor • Template- and device-level configuration • SSH Proxy

Device Model	Latest Supported Release	Standalone Support	Stack Support
7720-32c	Switch Engine 32.5 Fabric Engine 8.10	Switch Engine: <ul style="list-style-type: none"> Monitor Template- and device-level configuration SSH Proxy* Supplemental CLI* Fabric Engine: Monitor	Switch Engine: <ul style="list-style-type: none"> Monitor Template- and device-level configuration SSH Proxy
5320-16P-4XE	Switch Engine 32.5 Fabric Engine 8.10	<ul style="list-style-type: none"> Monitor Template- and device-level configuration SSH Proxy* Supplemental CLI* 	Switch Engine: <ul style="list-style-type: none"> Monitor Template- and device-level configuration SSH Proxy
5320-16P-4XE-DC	Switch Engine 32.5 Fabric Engine 8.10	<ul style="list-style-type: none"> Monitor Template- and device-level configuration SSH Proxy* Supplemental CLI* 	Switch Engine: <ul style="list-style-type: none"> Monitor Template- and device-level configuration SSH Proxy
5320-24T-4XE	Switch Engine 32.5 Fabric Engine 8.10	<ul style="list-style-type: none"> Monitor Template- and device-level configuration SSH Proxy* Supplemental CLI* 	<ul style="list-style-type: none"> Monitor Template- and device-level configuration SSH Proxy
5320-24PT-4XE	Switch Engine 32.5 Fabric Engine 8.10	<ul style="list-style-type: none"> Monitor Template- and device-level configuration SSH Proxy* Supplemental CLI* 	<ul style="list-style-type: none"> Monitor Template- and device-level configuration SSH Proxy
5320-48P-4XE	Switch Engine 32.5 Fabric Engine 8.10	<ul style="list-style-type: none"> Monitor Template- and device-level configuration SSH Proxy* Supplemental CLI* 	<ul style="list-style-type: none"> Monitor Template- and device-level configuration SSH Proxy
5320-48T-4XL	Switch Engine 32.5 Fabric Engine 8.10	<ul style="list-style-type: none"> Monitor Template- and device-level configuration SSH Proxy* Supplemental CLI* 	<ul style="list-style-type: none"> Monitor Template- and device-level configuration SSH Proxy

Device Model	Latest Supported Release	Standalone Support	Stack Support
5420F-24T-4XE	Switch Engine 32.5 Fabric Engine 8.10	<ul style="list-style-type: none"> • Monitor • Template- and device-level configuration • SSH Proxy* • Supplemental CLI* 	<ul style="list-style-type: none"> • Monitor • Template- and device-level configuration • SSH Proxy
5420F-24P-4XE	Switch Engine 32.5 Fabric Engine 8.10	<ul style="list-style-type: none"> • Monitor • Template- and device-level configuration • SSH Proxy* • Supplemental CLI* 	<ul style="list-style-type: none"> • Monitor • Template- and device-level configuration • SSH Proxy
5420F-24S-4XE	Switch Engine 32.5 Fabric Engine 8.10	<ul style="list-style-type: none"> • Monitor • Template- and device-level configuration • SSH Proxy* • Supplemental CLI* 	<ul style="list-style-type: none"> • Monitor • Template- and device-level configuration • SSH Proxy
5420F-48T-4XE	Switch Engine 32.5 Fabric Engine 8.10	<ul style="list-style-type: none"> • Monitor • Template- and device-level configuration • SSH Proxy* • Supplemental CLI* 	<ul style="list-style-type: none"> • Monitor • Template- and device-level configuration • SSH Proxy
5420F-48P-4XE	Switch Engine 32.5 Fabric Engine 8.10	<ul style="list-style-type: none"> • Monitor • Template- and device-level configuration • SSH Proxy* • Supplemental CLI* 	<ul style="list-style-type: none"> • Monitor • Template- and device-level configuration • SSH Proxy
5420F-48P-4XL	Switch Engine 32.5 Fabric Engine 8.10	<ul style="list-style-type: none"> • Monitor • Template- and device-level configuration • SSH Proxy* • Supplemental CLI* 	<ul style="list-style-type: none"> • Monitor • Template- and device-level configuration • SSH Proxy
5420F-8W-16P-4XE	Switch Engine 32.5 Fabric Engine 8.10	<ul style="list-style-type: none"> • Monitor • Template- and device-level configuration • SSH Proxy* • Supplemental CLI* 	<ul style="list-style-type: none"> • Monitor • Template- and device-level configuration • SSH Proxy

Device Model	Latest Supported Release	Standalone Support	Stack Support
5420F-16W-32P-4XE	Switch Engine 32.5 Fabric Engine 8.10	<ul style="list-style-type: none"> • Monitor • Template- and device-level configuration • SSH Proxy* • Supplemental CLI* 	<ul style="list-style-type: none"> • Monitor • Template- and device-level configuration • SSH Proxy
5420F-16MW-32P-4XE	Switch Engine 32.5 Fabric Engine 8.10	<ul style="list-style-type: none"> • Monitor • Template- and device-level configuration • SSH Proxy* • Supplemental CLI* 	<ul style="list-style-type: none"> • Monitor • Template- and device-level configuration • SSH Proxy
5420M-24T-4YE	Switch Engine 32.5 Fabric Engine 8.10	<ul style="list-style-type: none"> • Monitor • Template- and device-level configuration • SSH Proxy* • Supplemental CLI* 	<ul style="list-style-type: none"> • Monitor • Template- and device-level configuration • SSH Proxy
5420M-24W-4YE	Switch Engine 32.5 Fabric Engine 8.10	<ul style="list-style-type: none"> • Monitor • Template- and device-level configuration • SSH Proxy* • Supplemental CLI* 	<ul style="list-style-type: none"> • Monitor • Template- and device-level configuration • SSH Proxy
5420M-48T-4YE	Switch Engine 32.5 Fabric Engine 8.10	<ul style="list-style-type: none"> • Monitor • Template- and device-level configuration • SSH Proxy* • Supplemental CLI* 	<ul style="list-style-type: none"> • Monitor • Template- and device-level configuration • SSH Proxy
5420M-48W-4YE	Switch Engine 32.5 Fabric Engine 8.10	<ul style="list-style-type: none"> • Monitor • Template- and device-level configuration • SSH Proxy* • Supplemental CLI* 	<ul style="list-style-type: none"> • Monitor • Template- and device-level configuration • SSH Proxy
5420M-16MW-32P-4YE	Switch Engine 32.5 Fabric Engine 8.10	<ul style="list-style-type: none"> • Monitor • Template- and device-level configuration • SSH Proxy* • Supplemental CLI* 	<ul style="list-style-type: none"> • Monitor • Template- and device-level configuration • SSH Proxy

Device Model	Latest Supported Release	Standalone Support	Stack Support
5520-24W	Switch Engine 32.5 Fabric Engine 8.10	<ul style="list-style-type: none"> • Monitor • Template- and device-level configuration • SSH Proxy* • Supplemental CLI* 	<ul style="list-style-type: none"> • Monitor • Template- and device-level configuration • SSH Proxy
5520-24T	Switch Engine 32.5 Fabric Engine 8.10	<ul style="list-style-type: none"> • Monitor • Template- and device-level configuration • SSH Proxy* • Supplemental CLI* 	<ul style="list-style-type: none"> • Monitor • Template- and device-level configuration • SSH Proxy
5520-24T-ACDC	Switch Engine 32.5 Fabric Engine 8.10	<ul style="list-style-type: none"> • Monitor • Template- and device-level configuration • SSH Proxy* • Supplemental CLI* 	Switch Engine: <ul style="list-style-type: none"> • Monitor • Template- and device-level configuration • SSH Proxy
5520-24X-ACDC	Switch Engine 32.5 Fabric Engine 8.10	<ul style="list-style-type: none"> • Monitor • Template- and device-level configuration • SSH Proxy* • Supplemental CLI* 	Switch Engine: <ul style="list-style-type: none"> • Monitor • Template- and device-level configuration • SSH Proxy
5520-48W	Switch Engine 32.5 Fabric Engine 8.10	<ul style="list-style-type: none"> • Monitor • Template- and device-level configuration • SSH Proxy* • Supplemental CLI* 	<ul style="list-style-type: none"> • Monitor • Template- and device-level configuration • SSH Proxy
5520-48T	Switch Engine 32.5 Fabric Engine 8.10	<ul style="list-style-type: none"> • Monitor • Template- and device-level configuration • SSH Proxy* • Supplemental CLI* 	<ul style="list-style-type: none"> • Monitor • Template- and device-level configuration • SSH Proxy
5520-48T-ACDC	Switch Engine 32.5 Fabric Engine 8.10	<ul style="list-style-type: none"> • Monitor • Template- and device-level configuration • SSH Proxy* • Supplemental CLI* 	<ul style="list-style-type: none"> • Monitor • Template- and device-level configuration • SSH Proxy

Device Model	Latest Supported Release	Standalone Support	Stack Support
5520-12MW-36W	Switch Engine 32.5 Fabric Engine 8.10	<ul style="list-style-type: none"> • Monitor • Template- and device-level configuration • SSH Proxy* • Supplemental CLI* 	<ul style="list-style-type: none"> • Monitor • Template- and device-level configuration • SSH Proxy
5520-48SE	Switch Engine 32.5 Fabric Engine 8.10	<ul style="list-style-type: none"> • Monitor • Template- and device-level configuration • SSH Proxy* • Supplemental CLI* 	<ul style="list-style-type: none"> • Monitor • Template- and device-level configuration • SSH Proxy
5520-48SE-ACDC	Switch Engine 32.5 Fabric Engine 8.10	<ul style="list-style-type: none"> • Monitor • Template- and device-level configuration • SSH Proxy* • Supplemental CLI* 	<ul style="list-style-type: none"> • Monitor • Template- and device-level configuration • SSH Proxy
5520-24X	Switch Engine 32.5 Fabric Engine 8.10	<ul style="list-style-type: none"> • Monitor • Template- and device-level configuration • SSH Proxy* • Supplemental CLI* 	Switch Engine: <ul style="list-style-type: none"> • Monitor • Template- and device-level configuration • SSH Proxy
5720-24MW	Switch Engine 32.5 Fabric Engine 8.10	<ul style="list-style-type: none"> • Monitor • Template- and device-level configuration • SSH Proxy* • Supplemental CLI* 	Switch Engine: <ul style="list-style-type: none"> • Monitor • Template- and device-level configuration • SSH Proxy
5720-48MW	Switch Engine 32.5 Fabric Engine 8.10	<ul style="list-style-type: none"> • Monitor • Template- and device-level configuration • SSH Proxy* • Supplemental CLI* 	Switch Engine: <ul style="list-style-type: none"> • Monitor • Template- and device-level configuration • SSH Proxy

Device Model	Latest Supported Release	Standalone Support	Stack Support
5720-24MXW	Switch Engine 32.5 Fabric Engine 8.10	<ul style="list-style-type: none"> • Monitor • Template- and device-level configuration • SSH Proxy* • Supplemental CLI* 	Switch Engine: <ul style="list-style-type: none"> • Monitor • Template- and device-level configuration • SSH Proxy
5720-48MXW	Switch Engine 32.5 Fabric Engine 8.10	<ul style="list-style-type: none"> • Monitor • Template- and device-level configuration • SSH Proxy* • Supplemental CLI* 	Switch Engine: <ul style="list-style-type: none"> • Monitor • Template- and device-level configuration • SSH Proxy

**Note**

* SSH Proxy and Supplemental CLI can be used for configuring additional parameters not currently available within template or device-level configurations.

ExtremeXOS

Device Model	Latest Supported Release	Standalone Support	Stack Support
X435-8P-2T-W	ExtremeXOS 32.5	<ul style="list-style-type: none"> • Monitor • Template- and device-level configuration • SSH Proxy* • Supplemental CLI* 	N/A
X435-24T-4S	ExtremeXOS 32.5	<ul style="list-style-type: none"> • Monitor • Template- and device-level configuration • SSH Proxy* • Supplemental CLI* 	N/A
X435-24P-4S	ExtremeXOS 32.5	<ul style="list-style-type: none"> • Monitor • Template- and device-level configuration • SSH Proxy* • Supplemental CLI* 	N/A
X435-8T-4S	ExtremeXOS 32.5	<ul style="list-style-type: none"> • Monitor • Template- and device-level configuration • SSH Proxy* • Supplemental CLI* 	N/A

Device Model	Latest Supported Release	Standalone Support	Stack Support
X435-8P-4S	ExtremeXOS 32.5	<ul style="list-style-type: none"> • Monitor • Template- and device-level configuration • SSH Proxy* • Supplemental CLI* 	N/A
X440-G2-12p-10GE4	ExtremeXOS 32.5	<ul style="list-style-type: none"> • Monitor • Template- and device-level configuration • SSH Proxy* • Supplemental CLI* 	<ul style="list-style-type: none"> • Monitor • Template- and device-level configuration • SSH Proxy* • Supplemental CLI*
X440-G2-12t-10GE4	ExtremeXOS 32.5	<ul style="list-style-type: none"> • Monitor • Template- and device-level configuration • SSH Proxy* • Supplemental CLI* 	<ul style="list-style-type: none"> • Monitor • Template- and device-level configuration • SSH Proxy* • Supplemental CLI*
X440-G2-24p-10GE4	ExtremeXOS 32.5	<ul style="list-style-type: none"> • Monitor • Template- and device-level configuration • SSH Proxy* • Supplemental CLI* 	<ul style="list-style-type: none"> • Monitor • Template- and device-level configuration • SSH Proxy* • Supplemental CLI*
X440-G2-24t-10GE4	ExtremeXOS 32.5	<ul style="list-style-type: none"> • Monitor • Template- and device-level configuration • SSH Proxy* • Supplemental CLI* 	<ul style="list-style-type: none"> • Monitor • Template- and device-level configuration • SSH Proxy* • Supplemental CLI*
X440-G2-48p-10GE4	ExtremeXOS 32.5	<ul style="list-style-type: none"> • Monitor • Template- and device-level configuration • SSH Proxy* • Supplemental CLI* 	<ul style="list-style-type: none"> • Monitor • Template- and device-level configuration • SSH Proxy* • Supplemental CLI*

Device Model	Latest Supported Release	Standalone Support	Stack Support
X440-G2-48t-10GE4	ExtremeXOS 32.5	<ul style="list-style-type: none"> • Monitor • Template- and device-level configuration • SSH Proxy* • Supplemental CLI* 	<ul style="list-style-type: none"> • Monitor • Template- and device-level configuration • SSH Proxy* • Supplemental CLI*
X450-G2-24p-GE4	ExtremeXOS 32.5	<ul style="list-style-type: none"> • Monitor • Template- and device-level configuration • SSH Proxy* • Supplemental CLI* 	Monitor
X450-G2-24p-10GE4	ExtremeXOS 32.5	<ul style="list-style-type: none"> • Monitor • Template- and device-level configuration • SSH Proxy* • Supplemental CLI* 	Monitor
X450-G2-48p-10GE4	ExtremeXOS 32.5	<ul style="list-style-type: none"> • Monitor • Template- and device-level configuration • SSH Proxy* • Supplemental CLI* 	Monitor
X460-G2-24p-10GE4	ExtremeXOS 32.5	<ul style="list-style-type: none"> • Monitor • Template- and device-level configuration • SSH Proxy* • Supplemental CLI* 	Monitor
X460-G2-48p-10GE4	ExtremeXOS 32.5	<ul style="list-style-type: none"> • Monitor • Template- and device-level configuration • SSH Proxy* • Supplemental CLI* 	Monitor
X465-24W	ExtremeXOS 32.5	<ul style="list-style-type: none"> • Monitor • Template- and device-level configuration • SSH Proxy* • Supplemental CLI* 	Monitor
X465-48W	ExtremeXOS 32.5	<ul style="list-style-type: none"> • Monitor • Template- and device-level configuration • SSH Proxy* • Supplemental CLI* 	Monitor

Device Model	Latest Supported Release	Standalone Support	Stack Support
X465-24MU	ExtremeXOS 32.5	<ul style="list-style-type: none"> • Monitor • Template- and device-level configuration • SSH Proxy* • Supplemental CLI* 	Monitor
X465-48P	ExtremeXOS 32.5	<ul style="list-style-type: none"> • Monitor • Template- and device-level configuration • SSH Proxy* • Supplemental CLI* 	Monitor
X465-24MU-24W	ExtremeXOS 32.5	<ul style="list-style-type: none"> • Monitor • Template- and device-level configuration • SSH Proxy* • Supplemental CLI* 	Monitor

**Note**

* SSH Proxy and Supplemental CLI can be used for configuring additional parameters not currently available within template or device-level configurations.

VOSS

Device Model	Latest Supported Release	Standalone Support	Stack Support
VSP7432CQ	VOSS 8.10	<ul style="list-style-type: none"> • Monitor • Template- and device-level configuration • SSH Proxy* • Supplemental CLI* 	Not supported
VSP7400-48Y	VOSS 8.10	<ul style="list-style-type: none"> • Monitor • Template- and device-level configuration • SSH Proxy* • Supplemental CLI* 	Not supported
VSP4900-48P	VOSS 8.10	<ul style="list-style-type: none"> • Monitor • Template- and device-level configuration • SSH Proxy* • Supplemental CLI* 	Not supported

Device Model	Latest Supported Release	Standalone Support	Stack Support
VSP4900-24XE	VOSS 8.10	<ul style="list-style-type: none"> • Monitor • Template- and device-level configuration • SSH Proxy* • Supplemental CLI* 	Not supported
VSP4900-24S	VOSS 8.10	<ul style="list-style-type: none"> • Monitor • Template- and device-level configuration • SSH Proxy* • Supplemental CLI* 	Not supported
VSP4900-12MXU-12XE	VOSS 8.10	<ul style="list-style-type: none"> • Monitor • Template- and device-level configuration • SSH Proxy* • Supplemental CLI* 	Not supported
XA1480	VOSS 8.10	<ul style="list-style-type: none"> • Monitor • Template- and device-level configuration • SSH Proxy* • Supplemental CLI* 	Not supported
XA1440	VOSS 8.10	<ul style="list-style-type: none"> • Monitor • Template- and device-level configuration • SSH Proxy* • Supplemental CLI* 	Not supported

**Note**

* SSH Proxy and Supplemental CLI can be used for configuring additional parameters not currently available within template or device-level configurations.

IQ Engine (Cloud Native)

Device Model	Latest Supported Release
SR2024 End of Life	IQ Engine 6.5.12
SR2024P End of Life	IQ Engine 6.5.12
SR2124P End of Life	IQ Engine 6.5.12

Device Model	Latest Supported Release
SR2148P End of Life	IQ Engine 6.5.12
SR2208P	FASTPATH 8.2.0.2 v1.0.1.29 ExtremeCloud IQ Agent 1.1.31
SR2224P	FASTPATH 8.2.0.2 v1.0.1.29 ExtremeCloud IQ Agent 1.1.31
SR2324P	FASTPATH 8.2.0.2 v1.0.1.29 ExtremeCloud IQ Agent 1.1.31
SR2348P	FASTPATH 8.2.0.2 v1.0.1.29 ExtremeCloud IQ Agent 1.1.31

Dell EMC

Device Model	Latest Supported Release
N3132PX	IQAgent 1.1.29
N3024EF	IQAgent 1.1.29
N3024EP	IQAgent 1.1.29
N3024ET	IQAgent 1.1.29
N3048EP	IQAgent 1.1.29
N3048ET	IQAgent 1.1.29
N3024	IQAgent 1.1.29
N3024F	IQAgent 1.1.29
N3024P	IQAgent 1.1.29
N3048	IQAgent 1.1.29
N3048P	IQAgent 1.1.29
N2128PX	IQAgent 1.1.29
N2024	IQAgent 1.1.29
N2024P	IQAgent 1.1.29
N2048	IQAgent 1.1.29
N2048P	IQAgent 1.1.29
N1524	IQAgent 1.1.29
N1524P	IQAgent 1.1.29
N1548	IQAgent 1.1.29
N1548P	IQAgent 1.1.29
N1108T-ON	IQAgent 1.1.29
N1108P-ON	IQAgent 1.1.29

Device Model	Latest Supported Release
N1124T-ON	IQAgent 1.1.29
N1124P-ON	IQAgent 1.1.29
N1148T-ON	IQAgent 1.1.29
N1148P-ON	IQAgent 1.1.29

Routers

Device Model	Latest Supported Release	Standalone Support
BR100 End of Life	IQ Engine 6.5.12	<i>Not supported in ExtremeCloud IQ</i>
BR200 End of Life	IQ Engine 6.5.12	<i>Not supported in ExtremeCloud IQ</i>
BR200-LTE-VZ End of Life	IQ Engine 6.5.12	<i>Not supported in ExtremeCloud IQ</i>
BR200WP End of Life	IQ Engine 6.9.7	
XR200P	IQ Engine 6.9.7	Platform support introduced with IQ Engine 6.9.2
XR600	IQ Engine 10.0.11	Platform support introduced with IQ Engine 9.0.1
XR600P	IQ Engine 10.0.11	Platform support introduced with IQ Engine 9.0.1
VGVA	IQ Engine 6.9.7	

ExtremeCloud IQ - Site Engine

ExtremeCloud IQ - Site Engine Version	Supported Features
22.09.10.73	<ul style="list-style-type: none"> • License allocation • Device Statistics • Port Statistics • Unmanage/Manage device • Device Group to CCG mapping • Open Site Engine with SSO
22.09.11.14	<ul style="list-style-type: none"> • License allocation • Device Statistics • Port Statistics • Unmanage/Manage device • Device Group to CCG mapping • Open Site Engine with SSO

ExtremeCloud IQ - Site Engine Version	Supported Features
22.09.12.14	<ul style="list-style-type: none"> • License allocation • Device Statistics • Port Statistics • Unmanage/Manage device • Device Group to CCG mapping • Open Site Engine with SSO
22.09.13.5	<ul style="list-style-type: none"> • License allocation • Device Statistics • Port Statistics • Unmanage/Manage device • Device Group to CCG mapping • Open Site Engine with SSO
23.02.10	<ul style="list-style-type: none"> • License allocation • Device Statistics • Port Statistics • Unmanage/Manage device • Device Group to CCG mapping • Open Site Engine with SSO • Stack members
23.02.11	<ul style="list-style-type: none"> • License allocation • Device Statistics • Port Statistics • Unmanage/Manage device • Device Group to CCG mapping • Open Site Engine with SSO • Stack members
23.04.10	<ul style="list-style-type: none"> • License allocation • Device Statistics • Port Statistics • Unmanage/Manage device • Device Group to CCG mapping • Open Site Engine with SSO • Stack members
23.04.11	<ul style="list-style-type: none"> • License allocation • Device Statistics • Port Statistics • Unmanage/Manage device • Device Group to CCG mapping • Open Site Engine with SSO • Stack members

ExtremeCloud IQ - Site Engine Version	Supported Features
23.04.12	<ul style="list-style-type: none"> • License allocation • Device Statistics • Port Statistics • Unmanage/Manage device • Device Group to CCG mapping • Open Site Engine with SSO • Stack members
23.07.10	<ul style="list-style-type: none"> • License allocation • Device Assignment to the ExtremeCloud IQ Location • Device Statistics • Port Statistics • Unmanage/Manage device • Device Group to CCG mapping • Open Site Engine with SSO • Stack members • NAC details update for wireless end-systems
23.07.11	<ul style="list-style-type: none"> • License allocation • Device Assignment to the ExtremeCloud IQ Location • Device Statistics • Port Statistics • Unmanage/Manage device • Device Group to CCG mapping • Open Site Engine with SSO • Stack members • NAC details update for wireless end-systems
23.07.12	<ul style="list-style-type: none"> • License allocation • Device Assignment to the ExtremeCloud IQ Location • Device Statistics • Port Statistics • Unmanage/Manage device • Device Group to CCG mapping • Open Site Engine with SSO • Stack members • NAC details update for wireless end-systems

ExtremeCloud IQ CoPilot

ExtremeCloud IQ CoPilot Feature	Minimum Firmware				
	IQ Engine	Switch Engine	Fabric Engine	Extreme XOS	VOSS
WiFi Efficiency	10.5.2*	--	--	--	--
WiFi Capacity	10.5.2*	--	--	--	--

ExtremeCloud IQ CoPilot Feature	Minimum Firmware				
	IQ Engine	Switch Engine	Fabric Engine	Extreme XOS	VOSS
PoE Stability	10.5.2*	32.1	8.6	32.1	8.6
Port Efficiency	10.5.2**	31.7	8.6	31.7	8.6
DFS Recurrence	10.5.2*	--	--	--	--
Adverse Traffic Patterns	10.5.2*	31.7	8.6	31.7	8.6
Wireless Connectivity Experience	10.5.2	--	--	--	--
Wired Connectivity Experience	--	31.7	8.6	31.7	8.6

*beta support from 10.4

**beta support from 10.5.1

ExtremeCloud A3

ExtremeCloud A3 Version	Supported Features
5.0.0-12	<ul style="list-style-type: none"> • Licensing • Status Monitoring • SSO • Client Details
5.0.1-4	<ul style="list-style-type: none"> • Licensing • Status Monitoring • SSO • Client Details

Supported Browsers and Display Settings

Desktop and Mobile Browser Support



Note

ExtremeCloud IQ does not support 32-bit browsers.

Table 4: Desktop Browsers

Desktop Browsers	Version Supported
Chrome	v116
Edge	v115
Firefox	v115
Internet Explorer	Not supported

Table 4: Desktop Browsers (continued)

Desktop Browsers	Version Supported
Opera	v60
Safari	v13

Table 5: Mobile Browsers

Mobile Browsers	Version Supported
Android Webview	v73
Chrome for Android	v116
Edge	v79
Firefox for Android	v67
Opera for Android	v52
Safari for iOS	v13
Samsung Internet	Not supported

Display Settings

ExtremeCloud IQ supports display resolutions of 1280 x 1024 or higher.