



ExtremeCloud IQ Release Notes

24.2.0

9039021-05 Rev AA
March 2024



Copyright © 2024 Extreme Networks, Inc. All rights reserved.

Legal Notice

Extreme Networks, Inc. reserves the right to make changes in specifications and other information contained in this document and its website without prior notice. The reader should in all cases consult representatives of Extreme Networks to determine whether any such changes have been made.

The hardware, firmware, software or any specifications described or referred to in this document are subject to change without notice.

Trademarks

Extreme Networks and the Extreme Networks logo are trademarks or registered trademarks of Extreme Networks, Inc. in the United States and/or other countries.

All other names (including any product names) mentioned in this document are the property of their respective owners and may be trademarks or registered trademarks of their respective companies/owners.

For additional information on Extreme Networks trademarks, see: <https://www.extremenetworks.com/about-extreme-networks/company/legal/trademarks>

Open Source Declarations

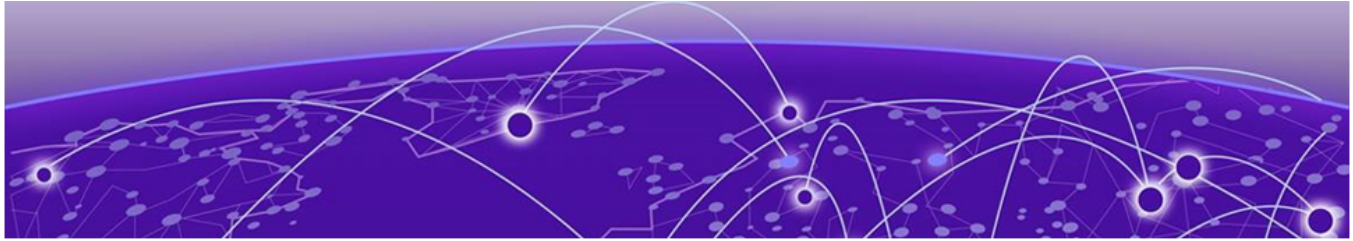
Some software files have been licensed under certain open source or third-party licenses.

End-user license agreements and open source declarations can be found at: <https://www.extremenetworks.com/support/policies/open-source-declaration/>



Table of Contents

General Release Information.....	4
Current Release: 24.2.0.....	4
Release: 24.2.0.53 Addressed Issues.....	4
Release: 24.2.0.52 Addressed Issues.....	4
Release: 24.2.0.51 Addressed Issues.....	4
Release: 24.2.0.47 Addressed Issues.....	5
Release: 24.2.0.45 Addressed Issues.....	5
ExtremeCloud IQ Public IP Address Blocks.....	5
Supported IQ Engine 10.6.6 Software.....	6
Previous Release.....	7
New Features in 24.2.0.44.....	7
Addressed Issues in 24.2.0.44.....	9
Known Issues in 24.2.0.44.....	12
Device Support Information.....	16
Controllers.....	16
Access Points.....	17
Universal Hardware.....	17
IQ Engine (Cloud Native).....	18
ExtremeWireless WiNG.....	19
Extreme Wireless.....	20
Switches.....	20
Universal Hardware.....	21
ExtremeXOS.....	27
VOSS.....	30
IQ Engine (Cloud Native).....	31
Dell EMC.....	32
Routers.....	32
ExtremeCloud IQ Site Engine.....	33
ExtremeCloud IQ CoPilot.....	36
ExtremeCloud A3.....	37
Supported Browsers and Display Settings.....	37
Desktop and Mobile Browser Support.....	37
Display Settings.....	37



General Release Information

Current Release: 24.2.0

March 2024

Release: 24.2.0.53 Addressed Issues

Table 1: Addressed Issues in Release 24.2.0.53

Issue ID	Description
CFD-10822	Addressed the following issues: <ul style="list-style-type: none">Stack membership does not update in ExtremeCloud IQ for stacks reported by ExtremeCloud IQ Site Engine.Stack deleted from ExtremeCloud IQ Site Engine is not deleted from ExtremeCloud IQ.
CFD-11036	The Update Location API was recently impacted. As of this patch release, the behavior for this API's Get/List Classification Rules is as expected.

Release: 24.2.0.52 Addressed Issues

Table 2: Addressed Issues in Release 24.2.0.52

Issue ID	Description
XIQ-29616	Addressed the issue where CoPilot anomaly location and anomaly report APIs were returning a BAD_REQUEST error response for valid requests.

Release: 24.2.0.51 Addressed Issues

Table 3: Addressed Issues in Release 24.2.0.51

Issue ID	Description
CFD-10927	Restored functionality of the BLE Monitoring legacy XAPI for Japan RDC.

Release: 24.2.0.47 Addressed Issues

Table 4: Addressed Issues in Release 24.2.0.47

Issue ID	Description
CDC-274	Addressed the issue where the inlets restart flow HAC/Connector was sending a private URL to the device instead of a public URL.
CDC-275	Addressed a device authentication failure to the cloud. Inlet channels are now established successfully.
XESS-1367	API to Support floor plan scaling for Location Essentials is now available.
XIQ-29598	Added additional context sensitive help links to ExtremeCloud IQ release 24.2.0.

Release: 24.2.0.45 Addressed Issues

Table 5: Addressed Issues in Release 24.2.0.45

Issue ID	Description
CFD-10884	Fixed case sensitivity issues when using username/password authentication in conjunction with the legacy XAPI. Newly created accounts are automatically saved as lowercase.
CFD-10906	Addressed issue where the same floor plan image file was unintentionally uploaded multiple times, causing "unable to access data" error message to appear onscreen.

ExtremeCloud IQ Public IP Address Blocks

Data Center	IP Block	Addresses and Ports
Global Data Center (CDC)	44.234.22.92/30 18.194.95.0/28 34.253.190.192/26 3.234.248.0/27	
Australia (AUS)	13.210.3.192/28	Firewall Address and Port Information
Azure, Canada Central (ACA)	20.151.64.48/28	Firewall Address and Port Information
Azure, US East (AVA)	52.226.89.112/28	Firewall Address and Port Information
Brazil (BR)	18.228.70.16/28	Firewall Address and Port Information
Germany (FRA)	3.67.81.96/27 18.194.95.0/28	Firewall Address and Port Information
India (IN)	13.232.67.8/29 3.6.70.64/29	Firewall Address and Port Information

Data Center	IP Block	Addresses and Ports
Ireland (IE)	34.253.190.192/26	Firewall Address and Port Information
Japan (JP)	18.176.203.112/29 13.231.6.232/29	Firewall Address and Port Information
Netherlands (NL-GCP)	34.91.82.64/27	Firewall Address and Port Information
Singapore (SG-GCP)	34.87.158.80/28	Firewall Address and Port Information
Spain (ES)	18.101.49.128/27	Firewall Address and Port Information
Sweden (SE)	13.48.186.224/29 13.48.4.184/29	Firewall Address and Port Information
Switzerland (ACH)	51.107.1.192/28	Firewall Address and Port Information
United Arab Emirates (UAE)	3.28.159.128/28	Firewall Address and Port Information
United Kingdom (UK-AGB)	51.143.233.80/28	Firewall Address and Port Information
US East (VA)	34.202.197.0/26 44.192.245.0/26 3.234.248.0/27	Firewall Address and Port Information
US East 2 (VA2)	34.202.197.0/26 44.192.245.0/26 3.234.248.0/27	Firewall Address and Port Information
US-Iowa (IA-GCP)	34.67.130.64/27	Firewall Address and Port Information
US Ohio (OH)	3.145.235.64/26	Firewall Address and Port Information

Supported IQ Engine 10.6.6 Software

See the [Release Notes](#) for information about the current release of IQ Engine.



Previous Release

[New Features in 24.2.0.44](#) on page 7

[Addressed Issues in 24.2.0.44](#) on page 9

[Known Issues in 24.2.0.44](#) on page 12

This section lists the new features, addressed issues, and known issues for the previous release.

New Features in 24.2.0.44

Device OS Support

This release adds support for the following device operating systems:

- **ExtremeXOS/Switch Engine:**
 - IQ Engine 10.6.6
 - 32.6.3 Image Download Support
 - 32.6.3 Onboard, Monitor, Config, Image Drag & Drop Support
 - 31.7.3 Patch 1-X Image Download Support
 - 31.7.3 Patch 1-X Onboard, Monitor, Config, Image Drag & Drop Support
 - EXOS iqagent 0.7.64 – Switch Engine supports IQagent 0.7.64
- **VOSS/Fabric Engine:**

VOSS iqagent 0.7.10 – Fabric Engine now supports IQagent 0.7.10

New Hardware Support

There is no new hardware support in this release.

Table 6: New Features in 24.2.0.44

Feature ID	Feature	Description
XIQ-982	Support IPv4 Network Allocation, DHCP Relay, Static Route Attributes and Device Level Config (Switch Engine)	<p>ExtremeCloud IQ now supports the configuration of IPv4 forwarding, DHCP Relay, and Static Routing for Universal Hardware running Switch Engine or x435 devices.</p> <p>Network Allocation configuration allows for an IPv4 Subnetwork to be defined with a VLAN created from VLAN attributes with a defined local IP Address Subnetwork space, IP address of the IPv4 interface, and DHCP Relay Server configuration.</p> <p>The IPv4 interface assigned to a device allows the ability to define IPv4 forwarding, VLAN loopback, and DHCP relay assignment. IPv4 Static routes can also be defined with the destination subnetwork, next hop IP, next hop IP ping protection, and metric.</p> <p>The IPv4 network allocation and IPv4 static routing can be defined within a network policy, switch template, or device level configuration.</p> <p>Switch Engine software version 32.6.2.68 or later is required.</p>
XIQ-14526	Support Route Monitor Polling Table (Switch Engine)	<p>ExtremeCloud IQ now supports the ability to view IPv4 routing table information for Switch Engine devices. This new view is available from Manage > Devices > Monitoring > Routing > IPv4 Routing Table.</p> <p>Within the IPv4 Routing Table section is the destination subnetwork, next hop, VLAN Name, VLAN ID, Route Origin, Status, Metric, Route Age, Route Type Priority, and Routing Instance information.</p> <p>Filters are created for organizing by Route Origin and Status.</p> <p>Switch Engine software version 32.6.2.68 or later is required.</p> <p>Note: Up to 100 IPv4 Routes are visible within the table. For additional visibility its recommended to utilize SSH proxy.</p>

Table 6: New Features in 24.2.0.44 (continued)

Feature ID	Feature	Description
XIQ-18608	Ability to add existing stack template slot, move, and copy stack template	<p>A Switch Engine Stack template supports the ability to add additional slots into the stack template, without creating and assigning a new stack template.</p> <p>Stack templates and single templates can also be copied from within the Network Policy > Switching > Switch Template section.</p> <p>When a template is copied, the option to copy the template to an existing policy or a new policy is also supported.</p>
XIQ-20477	Support Get Tech Support for ExtremeXOS/Switch Engine	Switch Engine devices now support the ability to download a Tech Support file for troubleshooting. Go to Manage Device , select a single device, select Utilities > Tools > Get Tech Support File .
XIQ-21080	Support Network Policy/ Device Level IPv4 Monitoring	<p>Switch Engine now supports the ability to view primary IPv4 address configured on a VLAN for Switch Engine devices. Go to Manage > Devices > Monitoring > Interfaces > IPv4.</p> <p>Switch Engine software version 32.6.2.68 or later is required.</p>

Addressed Issues in 24.2.0.44

Table 7: Addressed Issues in 24.2.0.44

Issue ID	Description
CFD-10760	To prevent the import of longer names, the length of the User Name field in the VIQ Export and VIQ Import now match.
XIQ-16477	6Ghz scanning on all 6E sensors is now supported.

Table 7: Addressed Issues in 24.2.0.44 (continued)

Issue ID	Description
XIQ-17947	<p>The AP5050 now supports 6 GHz for LPI (Low Power Indoor) in the following countries:</p> <ul style="list-style-type: none"> • Austria • Belgium • Bosnia_Herzegovina • Bulgaria • Chile • Croatia • Cyprus • Czech • Denmark • Estonia • Finland • France • French Polynesia • French Southern Territories • Georgia • Germany • Greece • Hungary • Iceland • Ireland • Israel • Italy • Latvia • Liechtenstein • Lithuania • Luxembourg • Malta • Moldova • Monaco • Montenegro • Myanmar • North Macedonia • Netherlands • Norway • Poland • Portugal • Romania • Saint Martin (French) • Serbia • Slovakia • Slovenia • Spain • Sweden • Switzerland • Turkey • UK
XIQ-17999	<p>The AP5050 now supports 6 GHz for LPI (Low Power Indoor) in the following countries:</p> <ul style="list-style-type: none"> • Australia • Bonaire, St. Eustatius & Saba • Brazil • British Indian Ocean • Christmas Island • Costa Rica • Falkland Islands • French Polynesia • French Southern Territories • Guatemala • Heard Island and McDonald Island • Honduras • Hong Kong • Japan • Korea • Malaysia • Mexico • Morocco • New Zealand • Pitcairn • Qatar • Saint Martin (French part) • Saudi Arabia • Seychelles • UAE • Vatican City

Table 7: Addressed Issues in 24.2.0.44 (continued)

Issue ID	Description
XIQ-18115	Switch Engine devices support the ability to change the transceiver port speed and duplex setting for a port type or device level port configuration. When a transceiver does not support the specific speed, the configuration update fails, displaying the configuration speed or duplex setting. You can update the configuration and opt to override the current configuration.
XIQ-20010	For Switch Engine devices, hover over a port to display a message indicating when the negotiated or configured speed is below the port speed capability. The message is displayed based on the transceivers maximum capabilities. Go to Manage > Devices > Monitor > Overview .
XIQ-24505	The PoE Stability anomaly offers an enhanced monitoring algorithm that minimizes false positives, ensuring alerts are activated only when crucial. Additionally, there is a new PoE trend view, making it easier to identify the occurrence time and patterns of the issue.
XIQ-25810	ExtremeCloud IQ now supports Switch Engine and EXOS 32.6.3 image through the local image management option.
XIQ-25811	ExtremeCloud IQ now supports Switch Engine and EXOS 32.6.3 image download.
XIQ-25815	ExtremeCloud IQ now supports Switch Engine and EXOS 31.7.3 image download.
XIQ-25816	ExtremeCloud IQ now supports Switch Engine and EXOS 31.7.3 image through the local image management option
XIQ-27175	Corrected an issue where a 5 GHz radio profile was pushed to an AP with a 2.4 GHz radio. This issue affected Software Defined Radios on APs running IQ Engine 10.6.5.0.
XIQ-27374	Switch Engine now supports IQAgent 0.7.74.
XIQ-27804	ExtremeCloud IQ now supports Fabric Engine/VOSS 8.10.3 image download for all supported VSP/Fabric Engine SKUs.
XIQ-27805	ExtremeCloud IQ support for onboard, monitor, and config with image drag & drop with Fabric Engine/VOSS 9.0.2.0. Supported switch models include 7720, 7520, 5720, 5520, 5420, 5320, VSP7400, and VSP4900.
XIQ-27958	ExtremeCloud IQ now supports Switch Engine and EXOS 31.7.2.28-patch1-75 image download.

Known Issues in 24.2.0.44

The following table lists known product issues. Issues are grouped according to ID prefix and sorted within their group with the most recently logged issue listed first. (Issue IDs are in descending order.)

Table 8: Known Issues in 24.2.0.44

Issue ID	Description
XIQ-27317	A delta configuration push failure occurs with the AP3000. Workaround: Push a complete configuration update to all 6 GHz capable access points.
XIQ-25796	Support for Switch Engine 32.4.1.10 has been deprecated from Digital Twin due to software compliance requirements. Therefore, it is not possible to create new Digital Twin instances or to relaunch existing instances at this time. Digital Twin functionality will resume with XIQ 24.3.
XIQ-25506 02859821, 02862601, 02868575	An upgrade to VOSS/Fabric Engine 9.0 no longer requires a 10G license for 5320 SKUs. An issue exists where the Manage > Devices table does not correctly display an existing 10G license in the License column. However, the 10G license can still be revoked with the Action > Revoke > License > 4-port 10G or 8-port 10G license option.
XIQ-22574	ExtremeCloud IQ accounts that are restricted to see devices in certain locations do not see devices that do not have a location set. Workaround: Prevent user roles with access to a subset of locations from having access to devices that are not placed in a location.
XIQ-22462	A configuration update might fail for configurations related to IPv6 on Switch Engine running software version 32.5.1.5. Workaround: Upgrade to 32.5.1.5 Patch1-1 and then proceed with pushing a device configuration update.
XIQ-21943	When an account goes into License Violation state, the user interface might not be locked until the page is refreshed or the user logs out and logs in again. There is no notification to the user, and some actions do not work in the License Violation state.
XIQ-20111	It is impossible to modify elements of a site configuration if a country is not assigned to the site. Each site must have an assigned country.
XIQ-20764	The protocol-suite CLI is missing for Wired .1X security-object for APs other than 150W and 302W. Workaround: After initially enabling user authentication on the AP and later enabling MAC authentication, the APs hold the protocol suite information. To enable connection with user authentication, run the CLI on the AP manually or apply the following to a supplemental CLI: security-object <object-name> security protocol-suite 802.1x

Table 8: Known Issues in 24.2.0.44 (continued)

Issue ID	Description
XIQ-20909	AP3000: When trying to configure 6 GHz for a country that does not support it, the configuration push fails. Workaround: Revert to 2.4 GHz.
XIQ-19572	Upon upgrade from ExtremeCloud IQ 23.2.x to 23.3.x, the Manage > Devices page does not retain settings from 23.2.x for the os option under the Column Picker drop-down list. To revert to the 23.2.x page view, the os option must be reselected, and the column repositioned on the page.
XIQ-18679	Onboarding of Switch Engine instances might result in incorrect license violations reported in ExtremeCloud IQ due to a Navigator license consumption when ExtremeCloud IQ CoPilot licenses are available. Workaround: Set devices to Unmanaged and then to Managed .
XIQ-18544	When VGVA configurations fail due to using the same WPA3 SSID in a single network policy, move the APs associated with the WPA3 enabled SSID to a different profile.
XIQ-18175	The question mark character is supported in the Global Setting > Device Management Settings password text box, but it is not supported in the Policy > Device Credentials password text box. Note: Switch Engine and Fabric Engine do not support the question mark character. You can create a separate password for Switch Engine and Fabric Engine at device-level configuration.
XIQ-17024	The Cable Test action is not supported on the x435 switch running the 32.3 software image due to limitations with storage space on the switch.
XIQ-16652	The AP3000/X and AP5010U Auto Provision Update is failing with country code discover timeout.
XIQ-12503	Network 360 shows Unknown Error when All Access Points Applications is selected and the user is selecting both ExtremeWireless WiNG and IQ Engine devices. Workaround: Deselect ExtremeWireless WiNG devices.
XIQ-11984	For AP3000/X and AP5050U/D devices operating in dual mode, under Manage > Devices > Interface Settings > Modify Multiple : Interface Settings > Wireless Interfaces , the radio Operating Mode drop-down list includes a 5 GHz selectable option; however, this option is not supported with this configuration.
XIQ-9848	There are duplicate entries in the Client Trail when a client moves away from the AP then comes back.
XIQ-9847	The Roam Time entry in the Client Trail does not always display the correct device name.

Table 8: Known Issues in 24.2.0.44 (continued)

Issue ID	Description
XIQ-7312	5720 Switch Engine devices show as connected during the reboot process.
XIQ-5700	Client Trial showed only the currently connected AP when the client roamed to a different AP from the onboarded ExtremeCloud IQ Controller.
CFD-8946 (02710778, 02748750)	License descriptions are automatically cleared when the Activated status is updated.
CFD-8678 (02688797)	VLAN probe category counts are not always accurate.
CFD-8677 (02688860)	VLAN probe shows the results of a successful probe while the status says it is still running.
CFD-8216 (02634924)	When Air Defense Essentials is enabled, APs running IQ Engine 10.4.3 or earlier versions cannot receive a delta configuration push from ExtremeCloud IQ. Workaround: Upgrade the access points to the latest IQ Engine supported version.
APC-41057	<p>Legend labels on the switch stack graph sometimes disappear when attempting to download or print the graph.</p> <p>Workaround:</p> <p>Download one graph at a time, and open the downloaded file before choosing to download again.</p> <p>Note: The SVG option is the most stable format; PNG, JPG, and PDF have spacing issues on the legend section.</p>
APC-22297	ExtremeCloud IQ displays PoE configuration controls for all ports on the Dell EMC N1108P switch, even though the N1100P only supports PoE on ports 1 - 4.
APC-21456	<p>In rare cases, ExtremeCloud IQ does not upload some IGMP sub-commands successfully.</p> <p>Workaround: Use the Supplemental CLI to upload commands when necessary. To use the supplemental CLI tool, go to Global Settings > VIQ Management, and set the Supplemental CLI slider to ON.</p>
APC-20760	ExtremeCloud IQ reports all wired devices that are connected to an SR2208P switch as unidentified.
APC-20734	When a configuration upload is unsuccessful because of improper Supplemental CLI commands, hovering the mouse over the upload message does not result in a tool tip containing the problematic CLI command.
APC-20647	ExtremeCloud IQ does not successfully upload configurations that contain an external RADIUS server.
APC-20172	ExtremeCloud IQ wrongly displays the option to configure SSH when attempting bulk edits of multiple switches or of switches and APs together. However, when the administrator is performing bulk edits of multiple APs only, ExtremeCloud IQ correctly hides the SSH configuration options.

Table 8: Known Issues in 24.2.0.44 (continued)

Issue ID	Description
DAPC-385	ExtremeCloud IQ sometimes displays the incorrect port number in the tool tip when the administrator mouses over a stack port on the Port Status page.
DAPC-382	When an administrator attaches a switch stack to HiveManager Virtual Appliance , only the primary switch is auto-detected. The administrator must subsequently onboard the remaining stack members manually.
DAPC-240D	<p>After the primary switch is removed from a stack, the stack retains the old MAC address. As a result, the primary switch (now a standalone switch), and the original stack both have the same MAC address, which ExtremeCloud IQ cannot resolve.</p> <p>Workaround: Before removing the primary switch from a stack with the intention of continuing to use the primary as a standalone switch, perform the following steps:</p> <ol style="list-style-type: none"> 1. Remove the stack from ExtremeCloud IQ. 2. Perform the related command line operations on the stack to remove the primary switch. 3. Add the stack and the standalone switch to ExtremeCloud IQ again.
DAPC-222	After an administrator uploads a stack template to a switch stack, ExtremeCloud IQ displays [-No Change-] in the Stack Template drop-down list, rather than the new template name.
DAPC-186	ExtremeCloud IQ does not display the management VLAN information in the Devices table.
DAPC-73	When resetting multiple switches simultaneously to factory default settings, ExtremeCloud IQ erroneously reports that the reset was unsuccessful.



Device Support Information

[Controllers](#) on page 16
[Access Points](#) on page 17
[Switches](#) on page 20
[Routers](#) on page 32
[ExtremeCloud IQ Site Engine](#) on page 33
[ExtremeCloud IQ CoPilot](#) on page 36
[ExtremeCloud A3](#) on page 37
[Supported Browsers and Display Settings](#) on page 37

This section lists the devices that ExtremeCloud IQ supports and includes the latest version of the software that each device supports.

Controllers

Device Model	Latest Supported Release	Comments
E1120	XIQC 10.08.01	Monitor only
E2120	XIQC 10.08.01	Monitor only
E2122	XIQC 10.08.01	Monitor Only
E3120	XIQC 10.08.01	Monitor only
VE6120	XIQC 10.08.01	Monitor only
VE6120H	XIQC 10.05.02	Monitor only
VE6120K	XIQC 10.08.01	Monitor Only
VE6125	XIQC 10.08.01	Monitor only
VE6125K	XIQC 10.08.01	Monitor Only
NX5500	WiNG OS 7.9.3.0	Monitor only
NX7500 Series	WiNG OS 7.9.3.0	Monitor only
NX9500 Series	WiNG OS 7.7.1.5	Monitor only
NX9600 Series	WiNG OS 7.9.3.0	Monitor only
RFS4000 Series	WiNG OS 5.9.7.1	Monitor only
RFS6000 Series	WiNG OS 5.9.1.8	Monitor only
RFS7000 Series	WiNG OS 5.8.6.11	Monitor only
VX9000	WiNG OS 7.9.3.0	Monitor only

Access Points

Access Point information is provided in the following sections:

- [Universal Hardware](#) on page 17
- [IQ Engine \(Cloud Native\)](#) on page 18
- [ExtremeWireless WiNG](#) on page 19
- [Extreme Wireless](#) on page 20

Universal Hardware

Device Model	Latest Supported Release	Comments
AP302W	IQ Engine 10.6.6 WiNG OS 7.9.3.0 AP 10.8.1	Platform support introduced with IQ Engine 10.3.1
AP305C	IQ Engine 10.6.6 WiNG OS 7.9.3.0 AP 10.8.1	Platform support introduced with IQ Engine 10.1.1
AP305C-1	IQ Engine 10.6.6 WiNG OS 7.9.3.0 AP 10.8.1	Platform support introduced with IQ Engine 10.4.6
AP305CX	IQ Engine 10.6.6 WiNG OS 7.9.3.0 AP 10.8.1	Platform support introduced with IQ Engine 10.1.1
AP3000	IQ Engine 10.6.6 AP 10.8.1	Platform support introduced with IQ engine 10.6.1
AP3000X	IQ Engine 10.6.6	Platform support introduced with IQ Engine 10.6.1
AP4000	IQ Engine 10.6.6 AP 10.8.1	Platform support introduced with IQ Engine 10.4.1
AP4000-1	IQ Engine 10.6.6 AP 10.8.1	Platform support introduced with IQ Engine 10.4.2
AP410C	IQ Engine 10.6.6 WiNG OS 7.9.3.0 AP 10.8.1	Platform support introduced with IQ Engine 10.1.2
AP410C-1	IQ Engine 10.6.6 WiNG OS 7.9.3.0 AP 10.8.1	Platform support introduced with IQ Engine 10.4.6
AP460C	IQ Engine 10.6.6 WiNG OS 7.9.3.0 AP 10.8.1	Platform support introduced with IQ Engine 10.1.2

Device Model	Latest Supported Release	Comments
AP460S6C	IQ Engine 10.6.6 WiNG OS 7.9.3.0 AP 10.8.1	Platform support introduced with IQ Engine 10.1.2
AP460S12C	IQ Engine 10.6.6 WiNG OS 7.9.3.0 AP 10.8.1	Platform support introduced with IQ Engine 10.1.2
AP5010	IQ Engine 10.6.6 AP 10.8.1 WiNG OS 7.9.3.0	Platform support introduced with IQ Engine 10.5.1
AP5050U	IQ Engine 10.6.6 AP 10.8.1	Platform support introduced with IQ Engine 10.5.3
AP5050D	IQ Engine 10.6.6 AP 10.8.1	Platform support introduced with IQ Engine 10.5.3
AP510C/CX	IQ Engine 10.6.6	Platform support introduced with IQ Engine 10.0.8

IQ Engine (Cloud Native)

Device Model	Latest Supported Release	Comments
AP630	IQ Engine 10.6.6	Platform support introduced with IQ Engine 10.0.1. End of Life Information
AP650	IQ Engine 10.6.6	Platform support introduced with IQ Engine 10.0.1. End of Life Information
AP650X	IQ Engine 10.6.6	Platform support introduced with IQ Engine 10.0.1. End of Life Information
AP1130	IQ Engine 10.6.1a	Platform support introduced with IQ Engine 8.2.1. End of Life Information
AP550	IQ Engine 10.6.1a	Platform support introduced with IQ Engine 7.0.3. End of Life Information
AP390	IQ Engine 6.5.16	End of Life Information
AP370	IQ Engine 6.5.16	End of Life Information
AP350	IQ Engine 6.5.16	End of Life Information
AP340	IQ Engine 6.5.10	End of Life Information
AP330	IQ Engine 6.5.16	End of Life Information
AP320	IQ Engine 6.5.10	End of Life Information
AP250	IQ Engine 10.6.1a	Platform support introduced with IQ Engine 7.0.2.

Device Model	Latest Supported Release	Comments
AP245X	IQ Engine 10.6.1a	Platform support introduced with IQ Engine 7.0.2. End of Life Information
AP230	IQ Engine 10.6.1a	Platform support introduced with IQ Engine 8.2.1. End of Life Information
AP170	IQ Engine 6.5.16	End of Life Information
AP150W	IQ Engine 10.6.1a	Platform support introduced with IQ Engine 8.1.1.
AP141	IQ Engine 6.5.16	End of Life Information
AP130	IQ Engine 10.6.1a	Platform support introduced with IQ Engine 8.2.1. End of Life Information
AP122	IQ Engine 10.6.1a	Platform support introduced with IQ Engine 7.0.4.
AP122X	IQ Engine 10.6.1a	Platform support introduced with IQ Engine 8.2.1. End of Life Information
AP121	IQ Engine 6.5.16	End of Life Information
AP120	IQ Engine 6.5.10	End of Life Information
Atom AP30	IQ Engine 10.6.1a	Platform support introduced with IQ Engine 8.3.2.

ExtremeWireless WiNG

Device Model	Latest Supported Release	Comments
AP560i	WiNG OS 7.9.3.0	Monitor only
AP560h	WiNG OS 7.9.3.0	Monitor only
AP505	WiNG OS 7.9.3.0	Monitor only
AP510i	WiNG OS 7.9.3.0	Monitor only
AP510i-1	WiNG OS 7.9.3.0	Monitor only
AP460i/e	WiNG OS 7.9.3.0	Monitor only
AP410i/e	WiNG OS 7.9.3.0	Monitor only
AP410i-1	WiNG OS 7.9.3.0	Monitor only
AP360i/e	WiNG OS 7.9.3.0	Monitor only
AP310i/e	WiNG OS 7.9.3.0	Monitor only
AP310i/e-1	WiNG OS 7.9.3.0	Monitor Only
AP3000	WiNG OS 7.9.3.0	Monitor Only
AP8533	WiNG OS 7.7.1.8	Monitor only
AP8432	WiNG OS 7.7.1.8	Monitor only
AP8232	WiNG OS 5.9.1.8	Monitor only
AP8222	WiNG OS 5.8.6.11	Monitor only
AP8163	WiNG OS 5.9.7.1	Monitor only

Device Model	Latest Supported Release	Comments
AP8132	WiNG OS 5.9.1.8	Monitor only
AP8122	WiNG OS 5.9.1.8	Monitor only
AP7662	WiNG OS 7.7.1.8	Monitor only
AP7632	WiNG OS 7.7.1.8	Monitor only
AP7622	WiNG OS 5.9.7.1	Monitor only
AP7612	WiNG OS 7.7.1.8	Monitor only
AP7602	WiNG OS 5.9.7.1	Monitor only
AP7562	WiNG OS 7.7.1.8	Monitor only
AP7532	WiNG OS 7.7.1.8	Monitor only
AP7522	WiNG OS 7.7.1.8	Monitor only
AP7502	WiNG OS 5.9.7.1	Monitor only
AP7161	WiNG OS 5.9.1.8	Monitor only
AP7131	WiNG OS 5.8.6.11	Monitor only
AP6562	WiNG OS 5.9.1.8	Monitor only
AP6532	WiNG OS 5.9.1.8	Monitor only
AP6522	WiNG OS 5.9.1.8	Monitor only
AP6521	WiNG OS 5.9.1.8	Monitor only
AP6511	WiNG OS 5.8.6.11	Monitor only

Extreme Wireless

Device Model	Latest Supported Release	Comments
AP3965	ExtremeWireless 10.51	Monitor only
AP3935	ExtremeWireless 10.51	Monitor only
AP3917	ExtremeWireless 10.51	Monitor only
AP3916C	ExtremeWireless 10.51	Monitor only
AP3915	ExtremeWireless 10.51	Monitor only
AP3912	ExtremeWireless 10.51	Monitor only
SA201	ExtremeWireless 10.51	Monitor only

Switches

Switch information is provided in the following sections:

- [Universal Hardware](#) on page 21
- [ExtremeXOS](#) on page 27
- [VOSS](#) on page 30

- [IQ Engine \(Cloud Native\)](#) on page 31
- [Dell EMC](#) on page 32

For the latest release notes for Fabric Engine and Switch Engine , see the [Extreme Networks Documentation Site](#).

Universal Hardware

Device Model	Latest Supported Release	Standalone Support	Stack Support
5320-16P-4XE	Switch Engine 32.7 Fabric Engine 9.0	<ul style="list-style-type: none"> • Monitor • Template- and device-level configuration • SSH Proxy* • Supplemental CLI* 	Switch Engine: <ul style="list-style-type: none"> • Monitor • Template- and device-level configuration • SSH Proxy
5320-16P-4XE-DC	Switch Engine 32.7 Fabric Engine 9.0	<ul style="list-style-type: none"> • Monitor • Template- and device-level configuration • SSH Proxy* • Supplemental CLI* 	Switch Engine: <ul style="list-style-type: none"> • Monitor • Template- and device-level configuration • SSH Proxy
5320-24T-8XE	Switch Engine 32.7 Fabric Engine 9.0	<ul style="list-style-type: none"> • Monitor • Template- and device-level configuration • SSH Proxy* • Supplemental CLI* 	<ul style="list-style-type: none"> • Monitor • Template- and device-level configuration • SSH Proxy
5320-24P-8XE	Switch Engine 32.7 Fabric Engine 9.0	<ul style="list-style-type: none"> • Monitor • Template- and device-level configuration • SSH Proxy* • Supplemental CLI* 	<ul style="list-style-type: none"> • Monitor • Template- and device-level configuration • SSH Proxy
5320-48T-8XE	Switch Engine 32.7 Fabric Engine 9.0	<ul style="list-style-type: none"> • Monitor • Template- and device-level configuration • SSH Proxy* • Supplemental CLI* 	<ul style="list-style-type: none"> • Monitor • Template- and device-level configuration • SSH Proxy
5320-48P-8XE	Switch Engine 32.7 Fabric Engine 9.0	<ul style="list-style-type: none"> • Monitor • Template- and device-level configuration • SSH Proxy* • Supplemental CLI* 	<ul style="list-style-type: none"> • Monitor • Template- and device-level configuration • SSH Proxy

Device Model	Latest Supported Release	Standalone Support	Stack Support
5420F-24T-4XE	Switch Engine 32.7 Fabric Engine 9.0	<ul style="list-style-type: none"> • Monitor • Template- and device-level configuration • SSH Proxy* • Supplemental CLI* 	<ul style="list-style-type: none"> • Monitor • Template- and device-level configuration • SSH Proxy
5420F-24P-4XE	Switch Engine 32.7 Fabric Engine 9.0	<ul style="list-style-type: none"> • Monitor • Template- and device-level configuration • SSH Proxy* • Supplemental CLI* 	<ul style="list-style-type: none"> • Monitor • Template- and device-level configuration • SSH Proxy
5420F-24S-4XE	Switch Engine 32.7 Fabric Engine 9.0	<ul style="list-style-type: none"> • Monitor • Template- and device-level configuration • SSH Proxy* • Supplemental CLI* 	<ul style="list-style-type: none"> • Monitor • Template- and device-level configuration • SSH Proxy
5420F-48T-4XE	Switch Engine 32.7 Fabric Engine 9.0	<ul style="list-style-type: none"> • Monitor • Template- and device-level configuration • SSH Proxy* • Supplemental CLI* 	<ul style="list-style-type: none"> • Monitor • Template- and device-level configuration • SSH Proxy
5420F-48P-4XE	Switch Engine 32.7 Fabric Engine 9.0	<ul style="list-style-type: none"> • Monitor • Template- and device-level configuration • SSH Proxy* • Supplemental CLI* 	<ul style="list-style-type: none"> • Monitor • Template- and device-level configuration • SSH Proxy
5420F-48P-4XL	Switch Engine 32.7 Fabric Engine 9.0	<ul style="list-style-type: none"> • Monitor • Template- and device-level configuration • SSH Proxy* • Supplemental CLI* 	<ul style="list-style-type: none"> • Monitor • Template- and device-level configuration • SSH Proxy
5420F-8W-16P-4XE	Switch Engine 32.7 Fabric Engine 9.0	<ul style="list-style-type: none"> • Monitor • Template- and device-level configuration • SSH Proxy* • Supplemental CLI* 	<ul style="list-style-type: none"> • Monitor • Template- and device-level configuration • SSH Proxy

Device Model	Latest Supported Release	Standalone Support	Stack Support
5420F-16W-32P-4XE	Switch Engine 32.7 Fabric Engine 9.0	<ul style="list-style-type: none"> • Monitor • Template- and device-level configuration • SSH Proxy* • Supplemental CLI* 	<ul style="list-style-type: none"> • Monitor • Template- and device-level configuration • SSH Proxy
5420F-16MW-32P-4XE	Switch Engine 32.7 Fabric Engine 9.0	<ul style="list-style-type: none"> • Monitor • Template- and device-level configuration • SSH Proxy* • Supplemental CLI* 	<ul style="list-style-type: none"> • Monitor • Template- and device-level configuration • SSH Proxy
5420M-24T-4YE	Switch Engine 32.7 Fabric Engine 9.0	<ul style="list-style-type: none"> • Monitor • Template- and device-level configuration • SSH Proxy* • Supplemental CLI* 	<ul style="list-style-type: none"> • Monitor • Template- and device-level configuration • SSH Proxy
5420M-24W-4YE	Switch Engine 32.7 Fabric Engine 9.0	<ul style="list-style-type: none"> • Monitor • Template- and device-level configuration • SSH Proxy* • Supplemental CLI* 	<ul style="list-style-type: none"> • Monitor • Template- and device-level configuration • SSH Proxy
5420M-48T-4YE	Switch Engine 32.7 Fabric Engine 9.0	<ul style="list-style-type: none"> • Monitor • Template- and device-level configuration • SSH Proxy* • Supplemental CLI* 	<ul style="list-style-type: none"> • Monitor • Template- and device-level configuration • SSH Proxy
5420M-48W-4YE	Switch Engine 32.7 Fabric Engine 9.0	<ul style="list-style-type: none"> • Monitor • Template- and device-level configuration • SSH Proxy* • Supplemental CLI* 	<ul style="list-style-type: none"> • Monitor • Template- and device-level configuration • SSH Proxy
5420M-16MW-32P-4YE	Switch Engine 32.7 Fabric Engine 9.0	<ul style="list-style-type: none"> • Monitor • Template- and device-level configuration • SSH Proxy* • Supplemental CLI* 	<ul style="list-style-type: none"> • Monitor • Template- and device-level configuration • SSH Proxy

Device Model	Latest Supported Release	Standalone Support	Stack Support
5520-24W	Switch Engine 32.7 Fabric Engine 9.0	<ul style="list-style-type: none"> • Monitor • Template- and device-level configuration • SSH Proxy* • Supplemental CLI* 	<ul style="list-style-type: none"> • Monitor • Template- and device-level configuration • SSH Proxy
5520-24T	Switch Engine 32.7 Fabric Engine 9.0	<ul style="list-style-type: none"> • Monitor • Template- and device-level configuration • SSH Proxy* • Supplemental CLI* 	<ul style="list-style-type: none"> • Monitor • Template- and device-level configuration • SSH Proxy
5520-24T-ACDC	Switch Engine 32.7 Fabric Engine 9.0	<ul style="list-style-type: none"> • Monitor • Template- and device-level configuration • SSH Proxy* • Supplemental CLI* 	Switch Engine: <ul style="list-style-type: none"> • Monitor • Template- and device-level configuration • SSH Proxy
5520-24X-ACDC	Switch Engine 32.7 Fabric Engine 9.0	<ul style="list-style-type: none"> • Monitor • Template- and device-level configuration • SSH Proxy* • Supplemental CLI* 	Switch Engine: <ul style="list-style-type: none"> • Monitor • Template- and device-level configuration • SSH Proxy
5520-48W	Switch Engine 32.7 Fabric Engine 9.0	<ul style="list-style-type: none"> • Monitor • Template- and device-level configuration • SSH Proxy* • Supplemental CLI* 	<ul style="list-style-type: none"> • Monitor • Template- and device-level configuration • SSH Proxy
5520-48T	Switch Engine 32.7 Fabric Engine 9.0	<ul style="list-style-type: none"> • Monitor • Template- and device-level configuration • SSH Proxy* • Supplemental CLI* 	<ul style="list-style-type: none"> • Monitor • Template- and device-level configuration • SSH Proxy
5520-48T-ACDC	Switch Engine 32.7 Fabric Engine 9.0	<ul style="list-style-type: none"> • Monitor • Template- and device-level configuration • SSH Proxy* • Supplemental CLI* 	<ul style="list-style-type: none"> • Monitor • Template- and device-level configuration • SSH Proxy

Device Model	Latest Supported Release	Standalone Support	Stack Support
5520-12MW-36W	Switch Engine 32.7 Fabric Engine 9.0	<ul style="list-style-type: none"> Monitor Template- and device-level configuration SSH Proxy* Supplemental CLI* 	<ul style="list-style-type: none"> Monitor Template- and device-level configuration SSH Proxy
5520-48SE	Switch Engine 32.7 Fabric Engine 9.0	<ul style="list-style-type: none"> Monitor Template- and device-level configuration SSH Proxy* Supplemental CLI* 	<ul style="list-style-type: none"> Monitor Template- and device-level configuration SSH Proxy
5520-48SE-ACDC	Switch Engine 32.7 Fabric Engine 9.0	<ul style="list-style-type: none"> Monitor Template- and device-level configuration SSH Proxy* Supplemental CLI* 	<ul style="list-style-type: none"> Monitor Template- and device-level configuration SSH Proxy
5520-24X	Switch Engine 32.7 Fabric Engine 9.0	<ul style="list-style-type: none"> Monitor Template- and device-level configuration SSH Proxy* Supplemental CLI* 	Switch Engine: <ul style="list-style-type: none"> Monitor Template- and device-level configuration SSH Proxy
5720-24MW	Switch Engine 32.7 Fabric Engine 9.0	<ul style="list-style-type: none"> Monitor Template- and device-level configuration SSH Proxy* Supplemental CLI* 	Switch Engine: <ul style="list-style-type: none"> Monitor Template- and device-level configuration SSH Proxy
5720-48MW	Switch Engine 32.7 Fabric Engine 9.0	<ul style="list-style-type: none"> Monitor Template- and device-level configuration SSH Proxy* Supplemental CLI* 	Switch Engine: <ul style="list-style-type: none"> Monitor Template- and device-level configuration SSH Proxy
5720-24MXW	Switch Engine 32.7 Fabric Engine 9.0	<ul style="list-style-type: none"> Monitor Template- and device-level configuration SSH Proxy* Supplemental CLI* 	Switch Engine: <ul style="list-style-type: none"> Monitor Template- and device-level configuration SSH Proxy

Device Model	Latest Supported Release	Standalone Support	Stack Support
5720-48MXW	Switch Engine 32.7 Fabric Engine 9.0	<ul style="list-style-type: none"> Monitor Template- and device-level configuration SSH Proxy* Supplemental CLI* 	Switch Engine: <ul style="list-style-type: none"> Monitor Template- and device-level configuration SSH Proxy
7520-48Y	Switch Engine 32.7 Fabric Engine 9.0	Switch Engine: <ul style="list-style-type: none"> Monitor Template- and device-level configuration SSH Proxy* Supplemental CLI* Fabric Engine: Monitor	Switch Engine: <ul style="list-style-type: none"> Monitor Template- and device-level configuration SSH Proxy
7520-48YE	Switch Engine 32.7 Fabric Engine 9.0	Switch Engine: <ul style="list-style-type: none"> Monitor Template- and device-level configuration SSH Proxy* Supplemental CLI* Fabric Engine: Monitor	Switch Engine: <ul style="list-style-type: none"> Monitor Template- and device-level configuration SSH Proxy
7520-48XT	Switch Engine 32.7 Fabric Engine 9.0	Switch Engine: <ul style="list-style-type: none"> Monitor Template- and device-level configuration SSH Proxy* Supplemental CLI* Fabric Engine: Monitor	Switch Engine: <ul style="list-style-type: none"> Monitor Template- and device-level configuration SSH Proxy
7720-32c	Switch Engine 32.7 Fabric Engine 9.0	Switch Engine: <ul style="list-style-type: none"> Monitor Template- and device-level configuration SSH Proxy* Supplemental CLI* Fabric Engine: Monitor	Switch Engine: <ul style="list-style-type: none"> Monitor Template- and device-level configuration SSH Proxy

**Note**

* SSH Proxy and Supplemental CLI can be used for configuring additional parameters not currently available within template or device-level configurations.

ExtremeXOS

Device Model	Latest Supported Release	Standalone Support	Stack Support
X435-8P-2T-W	ExtremeXOS 32.6.3	<ul style="list-style-type: none"> • Monitor • Template- and device-level configuration • SSH Proxy* • Supplemental CLI* 	N/A
X435-24T-4S	ExtremeXOS 32.6.3	<ul style="list-style-type: none"> • Monitor • Template- and device-level configuration • SSH Proxy* • Supplemental CLI* 	N/A
X435-24P-4S	ExtremeXOS 32.6.3	<ul style="list-style-type: none"> • Monitor • Template- and device-level configuration • SSH Proxy* • Supplemental CLI* 	N/A
X435-8T-4S	ExtremeXOS 32.6.3	<ul style="list-style-type: none"> • Monitor • Template- and device-level configuration • SSH Proxy* • Supplemental CLI* 	N/A
X435-8P-4S	ExtremeXOS 32.6.3	<ul style="list-style-type: none"> • Monitor • Template- and device-level configuration • SSH Proxy* • Supplemental CLI* 	N/A
X440-G2-12p-10GE4	ExtremeXOS 32.6.3	<ul style="list-style-type: none"> • Monitor • Template- and device-level configuration • SSH Proxy* • Supplemental CLI* 	<ul style="list-style-type: none"> • Monitor • Template- and device-level configuration • SSH Proxy* • Supplemental CLI*
X440-G2-12t-10GE4	ExtremeXOS 32.6.3	<ul style="list-style-type: none"> • Monitor • Template- and device-level configuration • SSH Proxy* • Supplemental CLI* 	<ul style="list-style-type: none"> • Monitor • Template- and device-level configuration • SSH Proxy* • Supplemental CLI*

Device Model	Latest Supported Release	Standalone Support	Stack Support
X440-G2-24p-10GE4	ExtremeXOS 32.6.3	<ul style="list-style-type: none"> • Monitor • Template- and device-level configuration • SSH Proxy* • Supplemental CLI* 	<ul style="list-style-type: none"> • Monitor • Template- and device-level configuration • SSH Proxy* • Supplemental CLI*
X440-G2-24t-10GE4	ExtremeXOS 32.6.3	<ul style="list-style-type: none"> • Monitor • Template- and device-level configuration • SSH Proxy* • Supplemental CLI* 	<ul style="list-style-type: none"> • Monitor • Template- and device-level configuration • SSH Proxy* • Supplemental CLI*
X440-G2-48p-10GE4	ExtremeXOS 32.6.3	<ul style="list-style-type: none"> • Monitor • Template- and device-level configuration • SSH Proxy* • Supplemental CLI* 	<ul style="list-style-type: none"> • Monitor • Template- and device-level configuration • SSH Proxy* • Supplemental CLI*
X440-G2-48t-10GE4	ExtremeXOS 32.6.3	<ul style="list-style-type: none"> • Monitor • Template- and device-level configuration • SSH Proxy* • Supplemental CLI* 	<ul style="list-style-type: none"> • Monitor • Template- and device-level configuration • SSH Proxy* • Supplemental CLI*
X450-G2-24p-GE4	ExtremeXOS 32.6.3	<ul style="list-style-type: none"> • Monitor • Template- and device-level configuration • SSH Proxy* • Supplemental CLI* 	Monitor
X450-G2-24p-10GE4	ExtremeXOS 32.6.3	<ul style="list-style-type: none"> • Monitor • Template- and device-level configuration • SSH Proxy* • Supplemental CLI* 	Monitor
X450-G2-48p-10GE4	ExtremeXOS 32.6.3	<ul style="list-style-type: none"> • Monitor • Template- and device-level configuration • SSH Proxy* • Supplemental CLI* 	Monitor

Device Model	Latest Supported Release	Standalone Support	Stack Support
X460-G2-24p-10GE4	ExtremeXOS 32.6.3	<ul style="list-style-type: none"> • Monitor • Template- and device-level configuration • SSH Proxy* • Supplemental CLI* 	Monitor
X460-G2-48p-10GE4	ExtremeXOS 32.6.3	<ul style="list-style-type: none"> • Monitor • Template- and device-level configuration • SSH Proxy* • Supplemental CLI* 	Monitor
X465-24W	ExtremeXOS 32.6.3	<ul style="list-style-type: none"> • Monitor • Template- and device-level configuration • SSH Proxy* • Supplemental CLI* 	Monitor
X465-48W	ExtremeXOS 32.6.3	<ul style="list-style-type: none"> • Monitor • Template- and device-level configuration • SSH Proxy* • Supplemental CLI* 	Monitor
X465-24MU	ExtremeXOS 32.6.3	<ul style="list-style-type: none"> • Monitor • Template- and device-level configuration • SSH Proxy* • Supplemental CLI* 	Monitor
X465-48P	ExtremeXOS 32.6.3	<ul style="list-style-type: none"> • Monitor • Template- and device-level configuration • SSH Proxy* • Supplemental CLI* 	Monitor
X465-24MU-24W	ExtremeXOS 32.6.3	<ul style="list-style-type: none"> • Monitor • Template- and device-level configuration • SSH Proxy* • Supplemental CLI* 	Monitor

**Note**

* SSH Proxy and Supplemental CLI can be used for configuring additional parameters not currently available within template or device-level configurations.

VOSS

Device Model	Latest Supported Release	Standalone Support	Stack Support
VSP7432CQ	VOSS 9.0	<ul style="list-style-type: none"> • Monitor • Template- and device-level configuration • SSH Proxy* • Supplemental CLI* 	Not supported
VSP7400-48Y	VOSS 9.0	<ul style="list-style-type: none"> • Monitor • Template- and device-level configuration • SSH Proxy* • Supplemental CLI* 	Not supported
VSP4900-48P	VOSS 9.0	<ul style="list-style-type: none"> • Monitor • Template- and device-level configuration • SSH Proxy* • Supplemental CLI* 	Not supported
VSP4900-24XE	VOSS 9.0	<ul style="list-style-type: none"> • Monitor • Template- and device-level configuration • SSH Proxy* • Supplemental CLI* 	Not supported
VSP4900-24S	VOSS 9.0	<ul style="list-style-type: none"> • Monitor • Template- and device-level configuration • SSH Proxy* • Supplemental CLI* 	Not supported
VSP4900-12MXU-12XE	VOSS 9.0	<ul style="list-style-type: none"> • Monitor • Template- and device-level configuration • SSH Proxy* • Supplemental CLI* 	Not supported

Device Model	Latest Supported Release	Standalone Support	Stack Support
XA1480	VOSS 8.10	<ul style="list-style-type: none"> Monitor Template- and device-level configuration SSH Proxy* Supplemental CLI* 	Not supported
XA1440	VOSS 8.10	<ul style="list-style-type: none"> Monitor Template- and device-level configuration SSH Proxy* Supplemental CLI* 	Not supported

**Note**

* SSH Proxy and Supplemental CLI can be used for configuring additional parameters not currently available within template or device-level configurations.

IQ Engine (Cloud Native)

Device Model	Latest Supported Release
SR2024 End of Life	IQ Engine 6.5.12
SR2024P End of Life	IQ Engine 6.5.12
SR2124P End of Life	IQ Engine 6.5.12
SR2148P End of Life	IQ Engine 6.5.12
SR2208P	FASTPATH 8.2.0.2 v1.0.1.29 ExtremeCloud IQ Agent 1.1.31
SR2224P	FASTPATH 8.2.0.2 v1.0.1.29 ExtremeCloud IQ Agent 1.1.31
SR2324P	FASTPATH 8.2.0.2 v1.0.1.29 ExtremeCloud IQ Agent 1.1.31
SR2348P	FASTPATH 8.2.0.2 v1.0.1.29 ExtremeCloud IQ Agent 1.1.31

Dell EMC

Device Model	Latest Supported Release
N3132PX	IQAgent 1.1.29
N3024EF	IQAgent 1.1.29
N3024EP	IQAgent 1.1.29
N3024ET	IQAgent 1.1.29
N3048EP	IQAgent 1.1.29
N3048ET	IQAgent 1.1.29
N3024	IQAgent 1.1.29
N3024F	IQAgent 1.1.29
N3024P	IQAgent 1.1.29
N3048	IQAgent 1.1.29
N3048P	IQAgent 1.1.29
N2128PX	IQAgent 1.1.29
N2024	IQAgent 1.1.29
N2024P	IQAgent 1.1.29
N2048	IQAgent 1.1.29
N2048P	IQAgent 1.1.29
N1524	IQAgent 1.1.29
N1524P	IQAgent 1.1.29
N1548	IQAgent 1.1.29
N1548P	IQAgent 1.1.29
N1108T-ON	IQAgent 1.1.29
N1108P-ON	IQAgent 1.1.29
N1124T-ON	IQAgent 1.1.29
N1124P-ON	IQAgent 1.1.29
N1148T-ON	IQAgent 1.1.29
N1148P-ON	IQAgent 1.1.29

Routers

Device Model	Latest Supported Release	Standalone Support
BR100 End of Life	IQ Engine 6.5.12	<i>Not supported in ExtremeCloud IQ</i>
BR200 End of Life	IQ Engine 6.5.12	<i>Not supported in ExtremeCloud IQ</i>

Device Model	Latest Supported Release	Standalone Support
BR200-LTE-VZ End of Life	IQ Engine 6.5.12	<i>Not supported in ExtremeCloud IQ</i>
BR200WP End of Life	IQ Engine 6.9.7	
XR200P	IQ Engine 6.9.7	Platform support introduced with IQ Engine 6.9.2
XR600	IQ Engine 10.0.11	Platform support introduced with IQ Engine 9.0.1
XR600P	IQ Engine 10.0.11	Platform support introduced with IQ Engine 9.0.1
VGVA	IQ Engine 6.9.7	

ExtremeCloud IQ Site Engine

ExtremeCloud IQ Site Engine Version	Supported Features
23.02.10	<ul style="list-style-type: none"> • License allocation • Device Statistics • Port Statistics • Unmanage/Manage device • Device Group to CCG mapping • Open Site Engine with SSO • Stack members
23.02.11	<ul style="list-style-type: none"> • License allocation • Device Statistics • Port Statistics • Unmanage/Manage device • Device Group to CCG mapping • Open Site Engine with SSO • Stack members
23.04.10	<ul style="list-style-type: none"> • License allocation • Device Statistics • Port Statistics • Unmanage/Manage device • Device Group to CCG mapping • Open Site Engine with SSO • Stack members

ExtremeCloud IQ Site Engine Version	Supported Features
23.04.11	<ul style="list-style-type: none"> • License allocation • Device Statistics • Port Statistics • Unmanage/Manage device • Device Group to CCG mapping • Open Site Engine with SSO • Stack members
23.04.12	<ul style="list-style-type: none"> • License allocation • Device Statistics • Port Statistics • Unmanage/Manage device • Device Group to CCG mapping • Open Site Engine with SSO • Stack members
23.07.10	<ul style="list-style-type: none"> • License allocation • Device Assignment to the ExtremeCloud IQ Location • Device Statistics • Port Statistics • Unmanage/Manage device • Device Group to CCG mapping • Open Site Engine with SSO • Stack members • NAC details update for wireless end-systems
23.07.11	<ul style="list-style-type: none"> • License allocation • Device Assignment to the ExtremeCloud IQ Location • Device Statistics • Port Statistics • Unmanage/Manage device • Device Group to CCG mapping • Open Site Engine with SSO • Stack members • NAC details update for wireless end-systems
23.07.12	<ul style="list-style-type: none"> • License allocation • Device Assignment to the ExtremeCloud IQ Location • Device Statistics • Port Statistics • Unmanage/Manage device • Device Group to CCG mapping • Open Site Engine with SSO • Stack members • NAC details update for wireless end-systems

ExtremeCloud IQ Site Engine Version	Supported Features
23.07.13	<ul style="list-style-type: none">• License allocation• Device Assignment to the ExtremeCloud IQ Location• Device Statistics• Port Statistics• Unmanage/Manage device• Device Group to CCG mapping• Open Site Engine with SSO• Stack members• NAC details update for wireless end-systems
23.11.10	<ul style="list-style-type: none">• License allocation• Device Assignment to the ExtremeCloud IQ Location• Device Statistics• Port Statistics• Unmanage/Manage device• Device Group to CCG mapping• Open Site Engine with SSO• Stack members• NAC details update for wireless end-systems
23.11.11	<ul style="list-style-type: none">• License allocation• Device Assignment to the ExtremeCloud IQ Location• Device Statistics• Port Statistics• Unmanage/Manage device• Device Group to CCG mapping• Open Site Engine with SSO• Stack members• NAC details update for wireless end-systems
23.11.12	<ul style="list-style-type: none">• License allocation• Device Assignment to the ExtremeCloud IQ Location• Device Statistics• Port Statistics• Unmanage/Manage device• Device Group to CCG mapping• Open Site Engine with SSO• Stack members• NAC details update for wireless end-systems

ExtremeCloud IQ Site Engine Version	Supported Features
24.2.10	<ul style="list-style-type: none"> • License allocation • Device Assignment to the ExtremeCloud IQ Location • Device Statistics • Port Statistics • Unmanage/Manage device • Device Group to CCG mapping • Open Site Engine with SSO • Stack members • NAC details update for wireless end-systems
24.2.11	<ul style="list-style-type: none"> • License allocation • Device Assignment to the ExtremeCloud IQ Location • Device Statistics • Port Statistics • Unmanage/Manage device • Device Group to CCG mapping • Open Site Engine with SSO • Stack members • NAC details update for wireless end-systems

ExtremeCloud IQ CoPilot

ExtremeCloud IQ CoPilot Feature	Minimum Firmware				
	IQ Engine	Switch Engine	Fabric Engine	Extreme XOS	VOSS
WiFi Efficiency	10.5.2*	--	--	--	--
WiFi Capacity	10.5.2*	--	--	--	--
PoE Stability	10.5.2*	32.1	8.6	32.1	8.6
Port Efficiency	10.5.2**	31.7	8.6	31.7	8.6
DFS Recurrence	10.5.2*	--	--	--	--
Adverse Traffic Patterns	10.5.2*	31.7	8.6	31.7	8.6
Wireless Connectivity Experience	10.5.2	--	--	--	--
Wired Connectivity Experience	--	31.7	8.6	31.7	8.6

*beta support from 10.4

**beta support from 10.5.1

ExtremeCloud A3

ExtremeCloud A3 Version	Supported Features
5.0.1-4	<ul style="list-style-type: none">• Licensing• Status Monitoring• SSO• Client Details

Supported Browsers and Display Settings

Desktop and Mobile Browser Support

**Note**

ExtremeCloud IQ does not support 32-bit browsers.

Table 9: Desktop Browsers

Desktop Browsers	Version Supported
Chrome	v116
Edge	v115
Firefox	v115
Internet Explorer	Not supported
Opera	v60
Safari	v13

Table 10: Mobile Browsers

Mobile Browsers	Version Supported
Android Webview	v73
Chrome for Android	v116
Edge	v79
Firefox for Android	v67
Opera for Android	v52
Safari for iOS	v13
Samsung Internet	Not supported

Display Settings

ExtremeCloud IQ supports display resolutions of 1280 x 1024 or higher.