



# ExtremeCloud IQ Release Notes

24.3.0

9039026-00 Rev AB  
April 2024



Copyright © 2024 Extreme Networks, Inc. All rights reserved.

## Legal Notice

Extreme Networks, Inc. reserves the right to make changes in specifications and other information contained in this document and its website without prior notice. The reader should in all cases consult representatives of Extreme Networks to determine whether any such changes have been made.

The hardware, firmware, software or any specifications described or referred to in this document are subject to change without notice.

## Trademarks

Extreme Networks and the Extreme Networks logo are trademarks or registered trademarks of Extreme Networks, Inc. in the United States and/or other countries.

All other names (including any product names) mentioned in this document are the property of their respective owners and may be trademarks or registered trademarks of their respective companies/owners.

For additional information on Extreme Networks trademarks, see: <https://www.extremenetworks.com/about-extreme-networks/company/legal/trademarks>

## Open Source Declarations

Some software files have been licensed under certain open source or third-party licenses.

End-user license agreements and open source declarations can be found at: <https://www.extremenetworks.com/support/policies/open-source-declaration/>



# Table of Contents

---

<b>General Release Information.....</b>	<b>4</b>
Current Release: 24.3.0.....	4
ExtremeCloud IQ Public IP Address Blocks.....	4
Supported IQ Engine 10.6.7 Software.....	5
<b>New Features in 24.3.0.82.....</b>	<b>6</b>
<b>Addressed Issues in 24.3.0.82.....</b>	<b>11</b>
<b>Known Issues in 24.3.0.82.....</b>	<b>12</b>
<b>Device Support Information.....</b>	<b>16</b>
Controllers.....	16
Access Points.....	17
Universal Hardware.....	17
IQ Engine (Cloud Native).....	18
ExtremeWireless WiNG.....	19
Extreme Wireless.....	20
Switches.....	20
Universal Hardware.....	21
ExtremeXOS.....	27
VOSS.....	30
IQ Engine (Cloud Native).....	31
Dell EMC.....	32
Routers.....	32
ExtremeCloud IQ Site Engine.....	33
ExtremeCloud IQ CoPilot.....	36
ExtremeCloud A3.....	37
Supported Browsers and Display Settings.....	37
Desktop and Mobile Browser Support.....	37
Display Settings.....	37



# General Release Information

Current Release: 24.3.0

April 2024

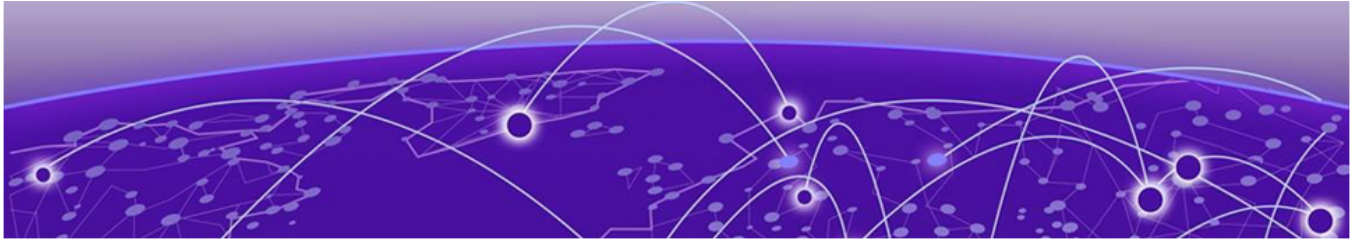
## ExtremeCloud IQ Public IP Address Blocks

Data Center	IP Block	Addresses and Ports
Global Data Center (GDC)	44.234.22.92/30 18.194.95.0/28 34.253.190.192/26 3.234.248.0/27	
Australia (AUS)	13.210.3.192/28	<a href="#">Firewall Address and Port Information</a>
Azure, Canada Central (ACA)	20.151.64.48/28	<a href="#">Firewall Address and Port Information</a>
Azure, US East (AVA)	52.226.89.112/28	<a href="#">Firewall Address and Port Information</a>
Brazil (BR)	18.228.70.16/28	<a href="#">Firewall Address and Port Information</a>
Germany (FRA)	3.67.81.96/27 18.194.95.0/28	<a href="#">Firewall Address and Port Information</a>
India (IN)	13.232.67.8/29 3.6.70.64/29	<a href="#">Firewall Address and Port Information</a>
Ireland (IE)	34.253.190.192/26	<a href="#">Firewall Address and Port Information</a>
Japan (JP)	18.176.203.112/29 13.231.6.232/29	<a href="#">Firewall Address and Port Information</a>
Netherlands (NL-GCP)	34.91.82.64/27	<a href="#">Firewall Address and Port Information</a>
Singapore (SG-GCP)	34.87.158.80/28	<a href="#">Firewall Address and Port Information</a>
Spain (ES)	18.101.49.128/27	<a href="#">Firewall Address and Port Information</a>
Sweden (SE)	13.48.186.224/29 13.48.4.184/29	<a href="#">Firewall Address and Port Information</a>
Switzerland (ACH)	51.107.1.192/28	<a href="#">Firewall Address and Port Information</a>
United Arab Emirates (UAE)	3.28.159.128/28	<a href="#">Firewall Address and Port Information</a>

Data Center	IP Block	Addresses and Ports
United Kingdom (UK-AGB)	51.143.233.80/28	<a href="#">Firewall Address and Port Information</a>
US East (VA )	34.202.197.0/26 44.192.245.0/26 3.234.248.0/27	<a href="#">Firewall Address and Port Information</a>
US East 2 (VA2)	34.202.197.0/26 44.192.245.0/26 3.234.248.0/27	<a href="#">Firewall Address and Port Information</a>
US-Iowa (IA-GCP)	34.67.130.64/27	<a href="#">Firewall Address and Port Information</a>
US Ohio (OH)	3.145.235.64/26	<a href="#">Firewall Address and Port Information</a>

## Supported IQ Engine 10.6.7 Software

See the [Release Notes](#) for information about the current release of IQ Engine.



# New Features in 24.3.0.82

## Device OS Support

This release adds support for the following device operating systems:

- **ExtremeXOS/Switch Engine:**
  - 32.6.3 Image Download Support
  - 32.6.3 Onboard, Monitor, Config, Image Drag & Drop Support
  - 31.7.3 Patch 1-X Image Download Support
  - 31.7.3 Patch 1-X Onboard, Monitor, Config, Image Drag & Drop Support
  - EXOS iqagent 0.7.64 – Switch Engine supports IQagent 0.7.64
- **VOSS/Fabric Engine:**

VOSS iqagent 0.7.10 – Fabric Engine now supports IQagent 0.7.10

IQ Engine 10.6.7

## New Hardware Support

There is no new hardware support in this release.

**Table 1: New Features in 24.3.0.82**

Feature ID	Feature	Description
XIQ-14048	Dynamic Packet Capture	Dynamic Packet Capture is available on the AP5010 and AP3000. Client association, authentication, and networking issues are captured and available in ExtremeCloud IQ.
XIQ-15047	Support Switch Engine Route Monitor Refresh Action	On demand refresh of the Switch Engine IPv4 Routing Table is now supported. You can now selectively refresh to update the IPv4 Route Monitoring Table within <b>Manage &gt; Device &gt; Monitor &gt; Routing</b> . When the refresh icon next to the <b>Last Polled</b> time is pressed, the latest IPv4 Routing Table information is populated. Switch Engine software version 32.6.2 or greater is required to be running on the device.

**Table 1: New Features in 24.3.0.82 (continued)**

Feature ID	Feature	Description
XIQ-16477	6GHZ Scanning support for 6E APs	6Ghz Scanning on all 6E Sensors is now supported.
XIQ-17518	Allow Changing Port Type settings when LAG is applied for ExtremeXOS/ Switch Engine	ExtremeCloud IQ now supports changing Switch Engine LAG port types after a port has been assigned to a LAG. This allows port type configurations to be changed within a switch template without the requirement to delete and recreate a LAG for port type changes. Software version 32.5 or greater is required to be running on the device.
XIQ-20469	Support Switch Engine Onboard, Monitor, and Config for model 4120 in ExtremeCloud IQ	ExtremeCloud IQ now supports model 4120 and 4220 SKUs for onboarding, monitoring, and configuration. Software version 32.7.1 or greater is required to be running on the device.
XIQ-20479	Support Switching Traffic Health Monitor	Additional diagnostics monitoring is now supported for Switch Engine port congestion packet drops, port Utilization RX, port Utilization TX, and QoS statistics from within <b>Manage &gt; Device &gt; Monitor &gt; Diagnostics</b> . The <b>QoS Statistics</b> tab within <b>Diagnostics</b> supports display of QoS packets and QoS packet congestion for selectable QoS profiles 1 through 8. Software version 32.7.1 or greater is required to be running on the device.
XIQ-20527	Enhance Clone Feature to add Config Bundle for ExtremeXOS/Switch Engine	The Switch Engine Clone device action from <b>Manage &gt; Devices</b> now supports the ability to perform a full configuration clone. This option includes configurations previously performed through supplemental CLI, SSH proxy, or local console saved on the original device. If the device becomes unresponsive after the clone and reboot process, the device will reboot to the previous configuration. <b>Note:</b> If stacking-support has been disabled for a device, then the device will be required to have a device update performed after the clone configuration process is complete. The stacking-support mode change will require an additional reboot.

**Table 1: New Features in 24.3.0.82 (continued)**

Feature ID	Feature	Description
XIQ-20538	Deprecate 60 Days Grace Period for Universal Switches	The 60 days grace period specific for Universal series switches is deprecated from the ExtremeCloud IQ
XIQ-21217	Support for IQE 10.6.7	Added support for IQ Engine 10.6.7.
XIQ-21409	Add Support for VLAN Probe to ExtremeXOS/Switch Engine	ExtremeCloud IQ now supports the VLAN probe feature for a Switch Engine device through <b>Manage &gt; Device &gt; Utilities &gt; Tools &gt; Switch VLAN Probe</b> , or through the <b>Topology Map</b> . The VLAN probe function utilizes the DHCP client on the Switch to check for and display IP connectivity on a specified VLAN. If the VLAN selected to perform a VLAN probe already has a static IP address or DHCP already enabled, then VLAN probe is skipped for that specific VLAN.
XIQ-21648	6G channel support for radio-share mode	AP3000 now supports radio-share mode on WiFi0 when configured for 6GHz.
XIQ-22342	Indoor Placement support in ExtremeCloud IQ User Interface	AP5050U/D is configurable in ExtremeCloud IQ for indoor use. Configuration options are for 2.4 GHz and 5 GHz. 6 GHz remains disabled.
XIQ-22443	ARP suppression to protect wireless access interface & Enhanced Proxy Arp	A new Proxy ARP Sliderbar is available in Management Options to set different ARP traffic handling capabilities across four available settings.
XIQ-22530	Ability to delete orphaned devices managed by ExtremeCloud IQ Site Engine	The user is now allowed to delete devices in undermined state managed by ExtremeCloud IQ Site Engine in Connected state to solve inconsistent state.
XIQ-22693	Switching Report	ExtremeCloud IQ now supports the ability to run a switch summary report for Switch Engine devices. The report is generated through <b>Manage &gt; Reports &gt; Switch Summary Report</b> .  The report can generate a list of port errors, port operational status, and port TX/RX information.
XIQ-23522	Thread Topology Visualization	Thread network visualization is available when configuring and deploying a Thread (IoT) network through ExtremeCloud IQ.



**Table 1: New Features in 24.3.0.82 (continued)**

Feature ID	Feature	Description
XIQ-23635	Support 4120 Switch Engine Universal Port Mode/ Channelization	ExtremeCloud IQ now supports model 4120 Switch Template and device level configurations to allow the universal port mode to be changed from <b>stacking-support</b> to <b>non stacking-support</b> . When <b>non-stacking support</b> is selected, the universal ports can also be channelized. Changes to the universal port mode will require a reboot when a device update is performed with universal port mode stacking-support change or channelization speed changes.
XIQ-24592	Add <b>Unassigned</b> Location to Filter	Administrators can now filter devices by <b>Location &gt; Unassigned</b> . This enhancement makes it easier to locate these devices and assign locations to them. This feature also removes the need to assign the location during device on-boarding.
XIQ-25312	DHCP Snooping for dynamic VLANs	The DHCP snooping feature within <b>Network Policy &gt; Common Settings</b> for Switch Engine, template configuration and device level configuration now supports enabling DHCP snooping on VLANs that are dynamically created.
XIQ-25439	Ability to view Instant Port Device Type on Device Level Port Left Click	Switch Engine now supports the ability to view Instant Port Device Type information on the left-click menu. Go to <b>Manage &gt; Monitor &gt; Overview &gt; Port Status</b> .
XIQ-25706	Digital Twin - Support for SwitchEngine 32.6.3 only	CoPilot Digital Twin supports Switch Engine OS version 32.6.3 and later. Support for OS version 32.4.1.10 has been deprecated.
XIQ-25814	ExtremeXOS/Switch Engine 32.7.1 Manufacturing Image Onboard, Monitor, Config (Drag/Drop) Support	ExtremeCloud IQ now supports ExtremeXOS/Switch Engine version 32.7.1 for onboarding, monitoring, and configuration support.
XIQ-27145	Support Route Monitor Polling Graph for Switch Engine	ExtremeCloud IQ now supports displaying historical route monitoring graphical views for Switch Engine from <b>Manage &gt; Device &gt; Monitor &gt; Routing</b> . The time range of day, week, month, or custom can be selected to display static, direct, OSPF, and total IPv4 based routes with the time graph. Software version 32.6.2 or greater is required to be running on the device.

**Table 1: New Features in 24.3.0.82 (continued)**

Feature ID	Feature	Description
XIQ-27306	Update AVC Signature to the latest version	IQ Engine Application Visibility & Control (AVC) signature file has been updated.
XIQ-27306	Add Ecuador for AP510C and AP460S6C	AP510C and AP460S6C are now supported in Ecuador.
XIQ-27806	VOSS/Fabric Engine 9.0.2 Onboarding, Monitoring, Configuration, and Download Image Support	ExtremeCloud IQ now supports VOSS/Fabric Engine 9.0.2 image downloads for all supported VOSS/Fabric Engine SKUs.
XIQ-27837	Wireless PoE Stability v2 - LLDP enabled	The information provided in CoPilot when an anomaly is detected with LLDP neighbor information is enhanced, including the upstream LLDP switch and other anomalous APs connected to the same switch.
XIQ-27838	Wireless PoE Stability v2 - LLDP disabled	The information provided in CoPilot when an anomaly is detected with LLDP neighbor information is enhanced, including the upstream LLDP switch and other anomalous APs connected to the same switch.
XIQ-28763	Add Ecuador for AP510C and AP460S6C	AP510C and AP460S6C are now supported in Ecuador.
XIQ-28858	Add indoor channels for Indonesia 149 - 161 for AP510C and AP5010	Indoor channels for Indonesia 149 - 161, for AP510C and AP5010, are now added.
XIQ-9753	Ability to add all supported VOSS/EXOS/ Universal switches as Manage Locally	VOSS and EXOS devices can be onboarded as managed locally
XESS-1421	Manual Classification	Manual Classification to Sanction or un-sanction APs, has been added to Extreme AirDefense Essentials.



## Addressed Issues in 24.3.0.82

---

**Table 2: Addressed Issues in 24.3.0.82**

Issue ID	Description
XIQ-1341	Addressed an issue where ExtremeCloud IQ was not generating MU-MIMO commands when configured in the radio-profile.
XIQ-17644	Network policy configuration changes are now only applicable to wireless devices, and no longer generate a delta configuration for a switch.
XIQ-9378	The option to change configuration is removed for switches onboarded as managed locally.
XIQ-9752	ExtremeCloud IQ no longer reports audit compliance for switches onboarded as managed locally
XIQ-9375	Switches onboarded as managed locally no longer have the option <b>Assign Policy</b> .
XIQ-20764	Addressed an issue where Wired .1X security-object for APs, other than 150W and 302W, were missing the protocol-suite CLI.



## Known Issues in 24.3.0.82

The following table lists known product issues. Issues are grouped according to ID prefix and sorted within their group with the most recently logged issue listed first. (Issue IDs are in descending order.)

**Table 3: Known Issues in 24.3.0.82**

Issue ID	Description
HOS-20803	Client Monitor 2.0 and Dynamic Packet Capture may not work for WPA3-ENT protected SSIDs.
XCP-1069	Linking to the Extreme Portal immediately after unlinking from it might result in some subscriptions not being properly revoked from the license pool. <b>Workaround:</b> After unlinking from the Extreme Portal, wait to allow time for the workflow to complete, before relinking.
XESS-1420	Termination of rogue AP and Rogue Clients is only supported on the 2.5Ghz and 5Ghz Bands. It does not support 6Ghz.
XIQ-27317	A delta configuration push failure occurs with the AP3000. <b>Workaround:</b> Push a complete configuration update to all 6 GHz capable access points.
XIQ-25796	Support for Switch Engine 32.4.1.10 has been deprecated from Digital Twin due to software compliance requirements. Therefore, it is not possible to create new Digital Twin instances or to relaunch existing instances at this time. Digital Twin functionality will resume with XIQ 24.3.
XIQ-25506 02859821, 02862601, 02868575	An upgrade to VOSS/Fabric Engine 9.0 no longer requires a 10G license for 5320 SKUs. An issue exists where the <b>Manage &gt; Devices</b> table does not correctly display an existing 10G license in the <b>License</b> column. However, the 10G license can still be revoked with the <b>Action &gt; Revoke &gt; License &gt; 4-port 10G</b> or <b>8-port 10G</b> license option.
XIQ-22574	ExtremeCloud IQ accounts that are restricted to see devices in certain locations do not see devices that do not have a location set. <b>Workaround:</b> Prevent user roles with access to a subset of locations from having access to devices that are not placed in a location.
XIQ-22462	A configuration update might fail for configurations related to IPv6 on Switch Engine running software version 32.5.1.5. <b>Workaround:</b> Upgrade to 32.5.1.5 Patch1-1 and then proceed with pushing a device configuration update.

**Table 3: Known Issues in 24.3.0.82 (continued)**

Issue ID	Description
XIQ-21943	When an account goes into License Violation state, the user interface might not be locked until the page is refreshed or the user logs out and logs in again. There is no notification to the user, and some actions do not work in the License Violation state.
XIQ-20111	It is impossible to modify elements of a site configuration if a country is not assigned to the site. Each site must have an assigned country.
XIQ-20909	AP3000: When trying to configure 6 GHz for a country that does not support it, the configuration push fails. <b>Workaround:</b> Revert to 2.4 GHz.
XIQ-19572	Upon upgrade from ExtremeCloud IQ 23.2.x to 23.3.x, the <b>Manage &gt; Devices</b> page does not retain settings from 23.2.x for the <b>os</b> option under the <b>Column Picker</b> drop-down list. To revert to the 23.2.x page view, the <b>os</b> option must be reselected, and the column repositioned on the page.
XIQ-18679	Onboarding of Switch Engine instances might result in incorrect license violations reported in ExtremeCloud IQ due to a Navigator license consumption when ExtremeCloud IQ CoPilot licenses are available. <b>Workaround:</b> Set devices to <b>Unmanaged</b> and then to <b>Managed</b> .
XIQ-18544	When VGVA configurations fail due to using the same WPA3 SSID in a single network policy, move the APs associated with the WPA3 enabled SSID to a different profile.
XIQ-18175	The question mark character is supported in the <b>Global Setting &gt; Device Management Settings</b> password text box, but it is not supported in the <b>Policy &gt; Device Credentials</b> password text box.  <b>Note:</b> Switch Engine and Fabric Engine do not support the question mark character. You can create a separate password for Switch Engine and Fabric Engine at device-level configuration.
XIQ-17024	The <b>Cable Test</b> action is not supported on the x435 switch running the 32.3 software image due to limitations with storage space on the switch.
XIQ-16652	The AP3000/X and AP5010U <b>Auto Provision Update</b> is failing with country code discover timeout.
XIQ-12503	Network 360 shows <b>Unknown Error</b> when <b>All Access Points Applications</b> is selected and the user is selecting both ExtremeWireless WiNG and IQ Engine devices. <b>Workaround:</b> Deselect ExtremeWireless WiNG devices.

**Table 3: Known Issues in 24.3.0.82 (continued)**

Issue ID	Description
XIQ-11984	For AP3000/X and AP5050U/D devices operating in dual mode, under <b>Manage &gt; Devices &gt; Interface Settings &gt; Modify Multiple : Interface Settings &gt; Wireless Interfaces</b> , the radio <b>Operating Mode</b> drop-down list includes a 5 GHz selectable option; however, this option is not supported with this configuration.
XIQ-9848	There are duplicate entries in the Client Trail when a client moves away from the AP then comes back.
XIQ-9847	The <b>Roam Time</b> entry in the Client Trail does not always display the correct device name.
XIQ-7312	5720 Switch Engine devices show as connected during the reboot process.
XIQ-5700	Client Trial showed only the currently connected AP when the client roamed to a different AP from the onboarded ExtremeCloud IQ Controller.
CFD-8946 ( 02710778, 02748750)	License descriptions are automatically cleared when the Activated status is updated.
CFD-8678 (02688797)	VLAN probe category counts are not always accurate.
CFD-8677 (02688860)	VLAN probe shows the results of a successful probe while the status says it is still running.
CFD-8216 (02634924)	When Air Defense Essentials is enabled, APs running IQ Engine 10.4.3 or earlier versions cannot receive a delta configuration push from ExtremeCloud IQ. Workaround: Upgrade the access points to the latest IQ Engine supported version.
APC-41057	Legend labels on the switch stack graph sometimes disappear when attempting to download or print the graph. <b>Workaround:</b> Download one graph at a time, and open the downloaded file before choosing to download again.  <b>Note:</b> The SVG option is the most stable format; PNG, JPG, and PDF have spacing issues on the legend section.
APC-22297	ExtremeCloud IQ displays PoE configuration controls for all ports on the Dell EMC N1108P switch, even though the N1100P only supports PoE on ports 1 - 4.
APC-21456	In rare cases, ExtremeCloud IQ does not upload some IGMP sub-commands successfully. <b>Workaround:</b> Use the <b>Supplemental CLI</b> to upload commands when necessary. To use the supplemental CLI tool, go to <b>Global Settings &gt; VIQ Management</b> , and set the <b>Supplemental CLI</b> slider to <b>ON</b> .
APC-20760	ExtremeCloud IQ reports all wired devices that are connected to an SR2208P switch as unidentified.

**Table 3: Known Issues in 24.3.0.82 (continued)**

Issue ID	Description
APC-20734	When a configuration upload is unsuccessful because of improper <b>Supplemental CLI</b> commands, hovering the mouse over the upload message does not result in a tool tip containing the problematic CLI command.
APC-20647	ExtremeCloud IQ does not successfully upload configurations that contain an external RADIUS server.
APC-20172	ExtremeCloud IQ wrongly displays the option to configure SSH when attempting bulk edits of multiple switches or of switches and APs together. However, when the administrator is performing bulk edits of multiple APs only, ExtremeCloud IQ correctly hides the SSH configuration options.
DAPC-385	ExtremeCloud IQ sometimes displays the incorrect port number in the tool tip when the administrator mouses over a stack port on the <b>Port Status</b> page.
DAPC-382	When an administrator attaches a switch stack to <b>HiveManager Virtual Appliance</b> , only the primary switch is auto-detected. The administrator must subsequently onboard the remaining stack members manually.
DAPC-240D	<p>After the primary switch is removed from a stack, the stack retains the old MAC address. As a result, the primary switch (now a standalone switch), and the original stack both have the same MAC address, which ExtremeCloud IQ cannot resolve.</p> <p><b>Workaround:</b> Before removing the primary switch from a stack with the intention of continuing to use the primary as a standalone switch, perform the following steps:</p> <ol style="list-style-type: none"> <li>1. Remove the stack from ExtremeCloud IQ.</li> <li>2. Perform the related command line operations on the stack to remove the primary switch.</li> <li>3. Add the stack and the standalone switch to ExtremeCloud IQ again.</li> </ol>
DAPC-222	After an administrator uploads a stack template to a switch stack, ExtremeCloud IQ displays <b>[-No Change-]</b> in the <b>Stack Template</b> drop-down list, rather than the new template name.
DAPC-186	ExtremeCloud IQ does not display the management VLAN information in the <b>Devices</b> table.
DAPC-73	When resetting multiple switches simultaneously to factory default settings, ExtremeCloud IQ erroneously reports that the reset was unsuccessful.





# Device Support Information

- [Controllers](#) on page 16
- [Access Points](#) on page 17
- [Switches](#) on page 20
- [Routers](#) on page 32
- [ExtremeCloud IQ Site Engine](#) on page 33
- [ExtremeCloud IQ CoPilot](#) on page 36
- [ExtremeCloud A3](#) on page 37
- [Supported Browsers and Display Settings](#) on page 37

This section lists the devices that ExtremeCloud IQ supports and includes the latest version of the software that each device supports.

## Controllers

Device Model	Latest Supported Release	Comments
E1120	XIQC 10.09.01	Monitor only
E2120	XIQC 10.09.01	Monitor only
E2122	XIQC 10.09.01	Monitor Only
E3120	XIQC 10.09.01	Monitor only
VE6120	XIQC 10.09.01	Monitor only
VE6120H	XIQC 10.05.02	Monitor only
VE6120K	XIQC 10.09.01	Monitor Only
VE6125	XIQC 10.09.01	Monitor only
VE6125K	XIQC 10.09.01	Monitor Only
NX5500	WiNG OS 7.9.4.0	Monitor only
NX7500 Series	WiNG OS 7.9.4.0	Monitor only
NX9500 Series	WiNG OS 7.7.1.9	Monitor only
NX9600 Series	WiNG OS 7.9.4.0	Monitor only
RFS4000 Series	WiNG OS 5.9.7.1	Monitor only
RFS6000 Series	WiNG OS 5.9.1.8	Monitor only
RFS7000 Series	WiNG OS 5.8.6.11	Monitor only
VX9000	WiNG OS 7.9.4.0	Monitor only



## Access Points

Access Point information is provided in the following sections:

- [Universal Hardware](#) on page 17
- [IQ Engine \(Cloud Native\)](#) on page 18
- [ExtremeWireless WiNG](#) on page 19
- [Extreme Wireless](#) on page 20

### Universal Hardware

Device Model	Latest Supported Release	Comments
AP302W	IQ Engine 10.6.7 WiNG OS 7.9.4.0 AP 10.9.1	Platform support introduced with IQ Engine 10.3.1
AP305C	IQ Engine 10.6.7 WiNG OS 7.9.4.0 AP 10.9.1	Platform support introduced with IQ Engine 10.1.1
AP305C-1	IQ Engine 10.6.7 WiNG OS 7.9.4.0 AP 10.9.1	Platform support introduced with IQ Engine 10.4.6
AP305CX	IQ Engine 10.6.7 WiNG OS 7.9.4.0 AP 10.9.1	Platform support introduced with IQ Engine 10.1.1
AP3000	IQ Engine 10.6.7 AP 10.9.1	Platform support introduced with IQ engine 10.6.1
AP3000X	IQ Engine 10.6.7	Platform support introduced with IQ Engine 10.6.1
AP4000	IQ Engine 10.6.7 AP 10.9.1	Platform support introduced with IQ Engine 10.4.1
AP4000-1	IQ Engine 10.6.7 AP 10.9.1	Platform support introduced with IQ Engine 10.4.2
AP410C	IQ Engine 10.6.7 WiNG OS 7.9.4.0 AP 10.9.1	Platform support introduced with IQ Engine 10.1.2
AP410C-1	IQ Engine 10.6.7 WiNG OS 7.9.4.0 AP 10.9.1	Platform support introduced with IQ Engine 10.4.6
AP460C	IQ Engine 10.6.7 WiNG OS 7.9.4.0 AP 10.9.1	Platform support introduced with IQ Engine 10.1.2

Device Model	Latest Supported Release	Comments
AP460S6C	IQ Engine 10.6.7 WiNG OS 7.9.4.0 AP 10.9.1	Platform support introduced with IQ Engine 10.1.2
AP460S12C	IQ Engine 10.6.7 WiNG OS 7.9.4.0 AP 10.9.1	Platform support introduced with IQ Engine 10.1.2
AP5010	IQ Engine 10.6.7 AP 10.9.1 WiNG OS 7.9.4.0	Platform support introduced with IQ Engine 10.5.1
AP5050U	IQ Engine 10.6.7 AP 10.9.1	Platform support introduced with IQ Engine 10.5.3
AP5050D	IQ Engine 10.6.7 AP 10.9.1	Platform support introduced with IQ Engine 10.5.3
AP510C/CX	IQ Engine 10.6.7	Platform support introduced with IQ Engine 10.0.8

## IQ Engine (Cloud Native)

Device Model	Latest Supported Release	Comments
AP630	IQ Engine 10.6.7	Platform support introduced with IQ Engine 10.0.1. <a href="#">End of Life Information</a>
AP650	IQ Engine 10.6.7	Platform support introduced with IQ Engine 10.0.1. <a href="#">End of Life Information</a>
AP650X	IQ Engine 10.6.7	Platform support introduced with IQ Engine 10.0.1. <a href="#">End of Life Information</a>
AP1130	IQ Engine 10.6.1a	Platform support introduced with IQ Engine 8.2.1. <a href="#">End of Life Information</a>
AP550	IQ Engine 10.6.1a	Platform support introduced with IQ Engine 7.0.3. <a href="#">End of Life Information</a>
AP390	IQ Engine 6.5.16	<a href="#">End of Life Information</a>
AP370	IQ Engine 6.5.16	<a href="#">End of Life Information</a>
AP350	IQ Engine 6.5.16	<a href="#">End of Life Information</a>
AP340	IQ Engine 6.5.10	<a href="#">End of Life Information</a>
AP330	IQ Engine 6.5.16	<a href="#">End of Life Information</a>
AP320	IQ Engine 6.5.10	<a href="#">End of Life Information</a>
AP250	IQ Engine 10.6.1a	Platform support introduced with IQ Engine 7.0.2.

Device Model	Latest Supported Release	Comments
AP245X	IQ Engine 10.6.1a	Platform support introduced with IQ Engine 7.0.2. <a href="#">End of Life Information</a>
AP230	IQ Engine 10.6.1a	Platform support introduced with IQ Engine 8.2.1. <a href="#">End of Life Information</a>
AP170	IQ Engine 6.5.16	<a href="#">End of Life Information</a>
AP150W	IQ Engine 10.6.1a	Platform support introduced with IQ Engine 8.1.1.
AP141	IQ Engine 6.5.16	<a href="#">End of Life Information</a>
AP130	IQ Engine 10.6.1a	Platform support introduced with IQ Engine 8.2.1. <a href="#">End of Life Information</a>
AP122	IQ Engine 10.6.1a	Platform support introduced with IQ Engine 7.0.4.
AP122X	IQ Engine 10.6.1a	Platform support introduced with IQ Engine 8.2.1. <a href="#">End of Life Information</a>
AP121	IQ Engine 6.5.16	<a href="#">End of Life Information</a>
AP120	IQ Engine 6.5.10	<a href="#">End of Life Information</a>
Atom AP30	IQ Engine 10.6.1a	Platform support introduced with IQ Engine 8.3.2.

## ExtremeWireless WiNG

Device Model	Latest Supported Release	Comments
AP560i	WiNG OS 7.9.4.0	Monitor only
AP560h	WiNG OS 7.9.4.0	Monitor only
AP505	WiNG OS 7.9.4.0	Monitor only
AP510i	WiNG OS 7.9.4.0	Monitor only
AP510i-1	WiNG OS 7.9.4.0	Monitor only
AP460i/e	WiNG OS 7.9.4.0	Monitor only
AP410i/e	WiNG OS 7.9.4.0	Monitor only
AP410i-1	WiNG OS 7.9.4.0	Monitor only
AP360i/e	WiNG OS 7.9.4.0	Monitor only
AP310i/e	WiNG OS 7.9.4.0	Monitor only
AP310i/e-1	WiNG OS 7.9.4.0	Monitor Only
AP3000	WiNG OS 7.9.4.0	Monitor Only
AP8533	WiNG OS 7.7.1.9	Monitor only
AP8432	WiNG OS 7.7.1.9	Monitor only
AP8232	WiNG OS 5.9.1.8	Monitor only
AP8222	WiNG OS 5.8.6.11	Monitor only
AP8163	WiNG OS 5.9.7.1	Monitor only

Device Model	Latest Supported Release	Comments
AP8132	WiNG OS 5.9.1.8	Monitor only
AP8122	WiNG OS 5.9.1.8	Monitor only
AP7662	WiNG OS 7.7.1.9	Monitor only
AP7632	WiNG OS 7.7.1.9	Monitor only
AP7622	WiNG OS 5.9.7.1	Monitor only
AP7612	WiNG OS 7.7.1.9	Monitor only
AP7602	WiNG OS 5.9.7.1	Monitor only
AP7562	WiNG OS 7.7.1.9	Monitor only
AP7532	WiNG OS 7.7.1.9	Monitor only
AP7522	WiNG OS 7.7.1.9	Monitor only
AP7502	WiNG OS 5.9.7.1	Monitor only
AP7161	WiNG OS 5.9.1.8	Monitor only
AP7131	WiNG OS 5.8.6.11	Monitor only
AP6562	WiNG OS 5.9.1.8	Monitor only
AP6532	WiNG OS 5.9.1.8	Monitor only
AP6522	WiNG OS 5.9.1.8	Monitor only
AP6521	WiNG OS 5.9.1.8	Monitor only
AP6511	WiNG OS 5.8.6.11	Monitor only

## Extreme Wireless

Device Model	Latest Supported Release	Comments
AP3965	ExtremeWireless 10.51	Monitor only
AP3935	ExtremeWireless 10.51	Monitor only
AP3917	ExtremeWireless 10.51	Monitor only
AP3916C	ExtremeWireless 10.51	Monitor only
AP3915	ExtremeWireless 10.51	Monitor only
AP3912	ExtremeWireless 10.51	Monitor only
SA201	ExtremeWireless 10.51	Monitor only

## Switches

Switch information is provided in the following sections:

- [Universal Hardware](#) on page 21
- [ExtremeXOS](#) on page 27
- [VOSS](#) on page 30

- [IQ Engine \(Cloud Native\)](#) on page 31
- [Dell EMC](#) on page 32

For the latest release notes for Fabric Engine and Switch Engine , see the [Extreme Networks Documentation Site](#).

## Universal Hardware

Device Model	Latest Supported Release	Standalone Support	Stack Support
5320-16P-4XE	Switch Engine 32.7 Fabric Engine 9.0	<ul style="list-style-type: none"> <li>• Monitor</li> <li>• Template- and device-level configuration</li> <li>• SSH Proxy*</li> <li>• Supplemental CLI*</li> </ul>	<b>Switch Engine:</b> <ul style="list-style-type: none"> <li>• Monitor</li> <li>• Template- and device-level configuration</li> <li>• SSH Proxy</li> </ul>
5320-16P-4XE-DC	Switch Engine 32.7 Fabric Engine 9.0	<ul style="list-style-type: none"> <li>• Monitor</li> <li>• Template- and device-level configuration</li> <li>• SSH Proxy*</li> <li>• Supplemental CLI*</li> </ul>	<b>Switch Engine:</b> <ul style="list-style-type: none"> <li>• Monitor</li> <li>• Template- and device-level configuration</li> <li>• SSH Proxy</li> </ul>
5320-24T-8XE	Switch Engine 32.7 Fabric Engine 9.0	<ul style="list-style-type: none"> <li>• Monitor</li> <li>• Template- and device-level configuration</li> <li>• SSH Proxy*</li> <li>• Supplemental CLI*</li> </ul>	<ul style="list-style-type: none"> <li>• Monitor</li> <li>• Template- and device-level configuration</li> <li>• SSH Proxy</li> </ul>
5320-24P-8XE	Switch Engine 32.7 Fabric Engine 9.0	<ul style="list-style-type: none"> <li>• Monitor</li> <li>• Template- and device-level configuration</li> <li>• SSH Proxy*</li> <li>• Supplemental CLI*</li> </ul>	<ul style="list-style-type: none"> <li>• Monitor</li> <li>• Template- and device-level configuration</li> <li>• SSH Proxy</li> </ul>
5320-48T-8XE	Switch Engine 32.7 Fabric Engine 9.0	<ul style="list-style-type: none"> <li>• Monitor</li> <li>• Template- and device-level configuration</li> <li>• SSH Proxy*</li> <li>• Supplemental CLI*</li> </ul>	<ul style="list-style-type: none"> <li>• Monitor</li> <li>• Template- and device-level configuration</li> <li>• SSH Proxy</li> </ul>
5320-48P-8XE	Switch Engine 32.7 Fabric Engine 9.0	<ul style="list-style-type: none"> <li>• Monitor</li> <li>• Template- and device-level configuration</li> <li>• SSH Proxy*</li> <li>• Supplemental CLI*</li> </ul>	<ul style="list-style-type: none"> <li>• Monitor</li> <li>• Template- and device-level configuration</li> <li>• SSH Proxy</li> </ul>

Device Model	Latest Supported Release	Standalone Support	Stack Support
5420F-24T-4XE	Switch Engine 32.7 Fabric Engine 9.0	<ul style="list-style-type: none"> <li>• Monitor</li> <li>• Template- and device-level configuration</li> <li>• SSH Proxy*</li> <li>• Supplemental CLI*</li> </ul>	<ul style="list-style-type: none"> <li>• Monitor</li> <li>• Template- and device-level configuration</li> <li>• SSH Proxy</li> </ul>
5420F-24P-4XE	Switch Engine 32.7 Fabric Engine 9.0	<ul style="list-style-type: none"> <li>• Monitor</li> <li>• Template- and device-level configuration</li> <li>• SSH Proxy*</li> <li>• Supplemental CLI*</li> </ul>	<ul style="list-style-type: none"> <li>• Monitor</li> <li>• Template- and device-level configuration</li> <li>• SSH Proxy</li> </ul>
5420F-24S-4XE	Switch Engine 32.7 Fabric Engine 9.0	<ul style="list-style-type: none"> <li>• Monitor</li> <li>• Template- and device-level configuration</li> <li>• SSH Proxy*</li> <li>• Supplemental CLI*</li> </ul>	<ul style="list-style-type: none"> <li>• Monitor</li> <li>• Template- and device-level configuration</li> <li>• SSH Proxy</li> </ul>
5420F-48T-4XE	Switch Engine 32.7 Fabric Engine 9.0	<ul style="list-style-type: none"> <li>• Monitor</li> <li>• Template- and device-level configuration</li> <li>• SSH Proxy*</li> <li>• Supplemental CLI*</li> </ul>	<ul style="list-style-type: none"> <li>• Monitor</li> <li>• Template- and device-level configuration</li> <li>• SSH Proxy</li> </ul>
5420F-48P-4XE	Switch Engine 32.7 Fabric Engine 9.0	<ul style="list-style-type: none"> <li>• Monitor</li> <li>• Template- and device-level configuration</li> <li>• SSH Proxy*</li> <li>• Supplemental CLI*</li> </ul>	<ul style="list-style-type: none"> <li>• Monitor</li> <li>• Template- and device-level configuration</li> <li>• SSH Proxy</li> </ul>
5420F-48P-4XL	Switch Engine 32.7 Fabric Engine 9.0	<ul style="list-style-type: none"> <li>• Monitor</li> <li>• Template- and device-level configuration</li> <li>• SSH Proxy*</li> <li>• Supplemental CLI*</li> </ul>	<ul style="list-style-type: none"> <li>• Monitor</li> <li>• Template- and device-level configuration</li> <li>• SSH Proxy</li> </ul>
5420F-8W-16P-4XE	Switch Engine 32.7 Fabric Engine 9.0	<ul style="list-style-type: none"> <li>• Monitor</li> <li>• Template- and device-level configuration</li> <li>• SSH Proxy*</li> <li>• Supplemental CLI*</li> </ul>	<ul style="list-style-type: none"> <li>• Monitor</li> <li>• Template- and device-level configuration</li> <li>• SSH Proxy</li> </ul>

Device Model	Latest Supported Release	Standalone Support	Stack Support
5420F-16W-32P-4XE	Switch Engine 32.7 Fabric Engine 9.0	<ul style="list-style-type: none"> <li>• Monitor</li> <li>• Template- and device-level configuration</li> <li>• SSH Proxy*</li> <li>• Supplemental CLI*</li> </ul>	<ul style="list-style-type: none"> <li>• Monitor</li> <li>• Template- and device-level configuration</li> <li>• SSH Proxy</li> </ul>
5420F-16MW-32P-4XE	Switch Engine 32.7 Fabric Engine 9.0	<ul style="list-style-type: none"> <li>• Monitor</li> <li>• Template- and device-level configuration</li> <li>• SSH Proxy*</li> <li>• Supplemental CLI*</li> </ul>	<ul style="list-style-type: none"> <li>• Monitor</li> <li>• Template- and device-level configuration</li> <li>• SSH Proxy</li> </ul>
5420M-24T-4YE	Switch Engine 32.7 Fabric Engine 9.0	<ul style="list-style-type: none"> <li>• Monitor</li> <li>• Template- and device-level configuration</li> <li>• SSH Proxy*</li> <li>• Supplemental CLI*</li> </ul>	<ul style="list-style-type: none"> <li>• Monitor</li> <li>• Template- and device-level configuration</li> <li>• SSH Proxy</li> </ul>
5420M-24W-4YE	Switch Engine 32.7 Fabric Engine 9.0	<ul style="list-style-type: none"> <li>• Monitor</li> <li>• Template- and device-level configuration</li> <li>• SSH Proxy*</li> <li>• Supplemental CLI*</li> </ul>	<ul style="list-style-type: none"> <li>• Monitor</li> <li>• Template- and device-level configuration</li> <li>• SSH Proxy</li> </ul>
5420M-48T-4YE	Switch Engine 32.7 Fabric Engine 9.0	<ul style="list-style-type: none"> <li>• Monitor</li> <li>• Template- and device-level configuration</li> <li>• SSH Proxy*</li> <li>• Supplemental CLI*</li> </ul>	<ul style="list-style-type: none"> <li>• Monitor</li> <li>• Template- and device-level configuration</li> <li>• SSH Proxy</li> </ul>
5420M-48W-4YE	Switch Engine 32.7 Fabric Engine 9.0	<ul style="list-style-type: none"> <li>• Monitor</li> <li>• Template- and device-level configuration</li> <li>• SSH Proxy*</li> <li>• Supplemental CLI*</li> </ul>	<ul style="list-style-type: none"> <li>• Monitor</li> <li>• Template- and device-level configuration</li> <li>• SSH Proxy</li> </ul>
5420M-16MW-32P-4YE	Switch Engine 32.7 Fabric Engine 9.0	<ul style="list-style-type: none"> <li>• Monitor</li> <li>• Template- and device-level configuration</li> <li>• SSH Proxy*</li> <li>• Supplemental CLI*</li> </ul>	<ul style="list-style-type: none"> <li>• Monitor</li> <li>• Template- and device-level configuration</li> <li>• SSH Proxy</li> </ul>

Device Model	Latest Supported Release	Standalone Support	Stack Support
5520-24W	Switch Engine 32.7 Fabric Engine 9.0	<ul style="list-style-type: none"> <li>• Monitor</li> <li>• Template- and device-level configuration</li> <li>• SSH Proxy*</li> <li>• Supplemental CLI*</li> </ul>	<ul style="list-style-type: none"> <li>• Monitor</li> <li>• Template- and device-level configuration</li> <li>• SSH Proxy</li> </ul>
5520-24T	Switch Engine 32.7 Fabric Engine 9.0	<ul style="list-style-type: none"> <li>• Monitor</li> <li>• Template- and device-level configuration</li> <li>• SSH Proxy*</li> <li>• Supplemental CLI*</li> </ul>	<ul style="list-style-type: none"> <li>• Monitor</li> <li>• Template- and device-level configuration</li> <li>• SSH Proxy</li> </ul>
5520-24T-ACDC	Switch Engine 32.7 Fabric Engine 9.0	<ul style="list-style-type: none"> <li>• Monitor</li> <li>• Template- and device-level configuration</li> <li>• SSH Proxy*</li> <li>• Supplemental CLI*</li> </ul>	<b>Switch Engine:</b> <ul style="list-style-type: none"> <li>• Monitor</li> <li>• Template- and device-level configuration</li> <li>• SSH Proxy</li> </ul>
5520-24X-ACDC	Switch Engine 32.7 Fabric Engine 9.0	<ul style="list-style-type: none"> <li>• Monitor</li> <li>• Template- and device-level configuration</li> <li>• SSH Proxy*</li> <li>• Supplemental CLI*</li> </ul>	<b>Switch Engine:</b> <ul style="list-style-type: none"> <li>• Monitor</li> <li>• Template- and device-level configuration</li> <li>• SSH Proxy</li> </ul>
5520-48W	Switch Engine 32.7 Fabric Engine 9.0	<ul style="list-style-type: none"> <li>• Monitor</li> <li>• Template- and device-level configuration</li> <li>• SSH Proxy*</li> <li>• Supplemental CLI*</li> </ul>	<ul style="list-style-type: none"> <li>• Monitor</li> <li>• Template- and device-level configuration</li> <li>• SSH Proxy</li> </ul>
5520-48T	Switch Engine 32.7 Fabric Engine 9.0	<ul style="list-style-type: none"> <li>• Monitor</li> <li>• Template- and device-level configuration</li> <li>• SSH Proxy*</li> <li>• Supplemental CLI*</li> </ul>	<ul style="list-style-type: none"> <li>• Monitor</li> <li>• Template- and device-level configuration</li> <li>• SSH Proxy</li> </ul>
5520-48T-ACDC	Switch Engine 32.7 Fabric Engine 9.0	<ul style="list-style-type: none"> <li>• Monitor</li> <li>• Template- and device-level configuration</li> <li>• SSH Proxy*</li> <li>• Supplemental CLI*</li> </ul>	<ul style="list-style-type: none"> <li>• Monitor</li> <li>• Template- and device-level configuration</li> <li>• SSH Proxy</li> </ul>



Device Model	Latest Supported Release	Standalone Support	Stack Support
5520-12MW-36W	Switch Engine 32.7 Fabric Engine 9.0	<ul style="list-style-type: none"> <li>• Monitor</li> <li>• Template- and device-level configuration</li> <li>• SSH Proxy*</li> <li>• Supplemental CLI*</li> </ul>	<ul style="list-style-type: none"> <li>• Monitor</li> <li>• Template- and device-level configuration</li> <li>• SSH Proxy</li> </ul>
5520-48SE	Switch Engine 32.7 Fabric Engine 9.0	<ul style="list-style-type: none"> <li>• Monitor</li> <li>• Template- and device-level configuration</li> <li>• SSH Proxy*</li> <li>• Supplemental CLI*</li> </ul>	<ul style="list-style-type: none"> <li>• Monitor</li> <li>• Template- and device-level configuration</li> <li>• SSH Proxy</li> </ul>
5520-48SE-ACDC	Switch Engine 32.7 Fabric Engine 9.0	<ul style="list-style-type: none"> <li>• Monitor</li> <li>• Template- and device-level configuration</li> <li>• SSH Proxy*</li> <li>• Supplemental CLI*</li> </ul>	<ul style="list-style-type: none"> <li>• Monitor</li> <li>• Template- and device-level configuration</li> <li>• SSH Proxy</li> </ul>
5520-24X	Switch Engine 32.7 Fabric Engine 9.0	<ul style="list-style-type: none"> <li>• Monitor</li> <li>• Template- and device-level configuration</li> <li>• SSH Proxy*</li> <li>• Supplemental CLI*</li> </ul>	<b>Switch Engine:</b> <ul style="list-style-type: none"> <li>• Monitor</li> <li>• Template- and device-level configuration</li> <li>• SSH Proxy</li> </ul>
5720-24MW	Switch Engine 32.7 Fabric Engine 9.0	<ul style="list-style-type: none"> <li>• Monitor</li> <li>• Template- and device-level configuration</li> <li>• SSH Proxy*</li> <li>• Supplemental CLI*</li> </ul>	<b>Switch Engine:</b> <ul style="list-style-type: none"> <li>• Monitor</li> <li>• Template- and device-level configuration</li> <li>• SSH Proxy</li> </ul>
5720-48MW	Switch Engine 32.7 Fabric Engine 9.0	<ul style="list-style-type: none"> <li>• Monitor</li> <li>• Template- and device-level configuration</li> <li>• SSH Proxy*</li> <li>• Supplemental CLI*</li> </ul>	<b>Switch Engine:</b> <ul style="list-style-type: none"> <li>• Monitor</li> <li>• Template- and device-level configuration</li> <li>• SSH Proxy</li> </ul>
5720-24MXW	Switch Engine 32.7 Fabric Engine 9.0	<ul style="list-style-type: none"> <li>• Monitor</li> <li>• Template- and device-level configuration</li> <li>• SSH Proxy*</li> <li>• Supplemental CLI*</li> </ul>	<b>Switch Engine:</b> <ul style="list-style-type: none"> <li>• Monitor</li> <li>• Template- and device-level configuration</li> <li>• SSH Proxy</li> </ul>

Device Model	Latest Supported Release	Standalone Support	Stack Support
5720-48MXW	Switch Engine 32.7 Fabric Engine 9.0	<ul style="list-style-type: none"> <li>Monitor</li> <li>Template- and device-level configuration</li> <li>SSH Proxy*</li> <li>Supplemental CLI*</li> </ul>	<b>Switch Engine:</b> <ul style="list-style-type: none"> <li>Monitor</li> <li>Template- and device-level configuration</li> <li>SSH Proxy</li> </ul>
7520-48Y	Switch Engine 32.7 Fabric Engine 9.0	<b>Switch Engine:</b> <ul style="list-style-type: none"> <li>Monitor</li> <li>Template- and device-level configuration</li> <li>SSH Proxy*</li> <li>Supplemental CLI*</li> </ul> <b>Fabric Engine:</b> Monitor	<b>Switch Engine:</b> <ul style="list-style-type: none"> <li>Monitor</li> <li>Template- and device-level configuration</li> <li>SSH Proxy</li> </ul>
7520-48YE	Switch Engine 32.7 Fabric Engine 9.0	<b>Switch Engine:</b> <ul style="list-style-type: none"> <li>Monitor</li> <li>Template- and device-level configuration</li> <li>SSH Proxy*</li> <li>Supplemental CLI*</li> </ul> <b>Fabric Engine:</b> Monitor	<b>Switch Engine:</b> <ul style="list-style-type: none"> <li>Monitor</li> <li>Template- and device-level configuration</li> <li>SSH Proxy</li> </ul>
7520-48XT	Switch Engine 32.7 Fabric Engine 9.0	<b>Switch Engine:</b> <ul style="list-style-type: none"> <li>Monitor</li> <li>Template- and device-level configuration</li> <li>SSH Proxy*</li> <li>Supplemental CLI*</li> </ul> <b>Fabric Engine:</b> Monitor	<b>Switch Engine:</b> <ul style="list-style-type: none"> <li>Monitor</li> <li>Template- and device-level configuration</li> <li>SSH Proxy</li> </ul>
7720-32c	Switch Engine 32.7 Fabric Engine 9.0	<b>Switch Engine:</b> <ul style="list-style-type: none"> <li>Monitor</li> <li>Template- and device-level configuration</li> <li>SSH Proxy*</li> <li>Supplemental CLI*</li> </ul> <b>Fabric Engine:</b> Monitor	<b>Switch Engine:</b> <ul style="list-style-type: none"> <li>Monitor</li> <li>Template- and device-level configuration</li> <li>SSH Proxy</li> </ul>



**Note**

\* SSH Proxy and Supplemental CLI can be used for configuring additional parameters not currently available within template or device-level configurations.

## ExtremeXOS

Device Model	Latest Supported Release	Standalone Support	Stack Support
X435-8P-2T-W	ExtremeXOS 32.6.3	<ul style="list-style-type: none"> <li>• Monitor</li> <li>• Template- and device-level configuration</li> <li>• SSH Proxy*</li> <li>• Supplemental CLI*</li> </ul>	N/A
X435-24T-4S	ExtremeXOS 32.6.3	<ul style="list-style-type: none"> <li>• Monitor</li> <li>• Template- and device-level configuration</li> <li>• SSH Proxy*</li> <li>• Supplemental CLI*</li> </ul>	N/A
X435-24P-4S	ExtremeXOS 32.6.3	<ul style="list-style-type: none"> <li>• Monitor</li> <li>• Template- and device-level configuration</li> <li>• SSH Proxy*</li> <li>• Supplemental CLI*</li> </ul>	N/A
X435-8T-4S	ExtremeXOS 32.6.3	<ul style="list-style-type: none"> <li>• Monitor</li> <li>• Template- and device-level configuration</li> <li>• SSH Proxy*</li> <li>• Supplemental CLI*</li> </ul>	N/A
X435-8P-4S	ExtremeXOS 32.6.3	<ul style="list-style-type: none"> <li>• Monitor</li> <li>• Template- and device-level configuration</li> <li>• SSH Proxy*</li> <li>• Supplemental CLI*</li> </ul>	N/A
X440-G2-12p-10GE4	ExtremeXOS 32.6.3	<ul style="list-style-type: none"> <li>• Monitor</li> <li>• Template- and device-level configuration</li> <li>• SSH Proxy*</li> <li>• Supplemental CLI*</li> </ul>	<ul style="list-style-type: none"> <li>• Monitor</li> <li>• Template- and device-level configuration</li> <li>• SSH Proxy*</li> <li>• Supplemental CLI*</li> </ul>
X440-G2-12t-10GE4	ExtremeXOS 32.6.3	<ul style="list-style-type: none"> <li>• Monitor</li> <li>• Template- and device-level configuration</li> <li>• SSH Proxy*</li> <li>• Supplemental CLI*</li> </ul>	<ul style="list-style-type: none"> <li>• Monitor</li> <li>• Template- and device-level configuration</li> <li>• SSH Proxy*</li> <li>• Supplemental CLI*</li> </ul>

Device Model	Latest Supported Release	Standalone Support	Stack Support
X440-G2-24p-10GE4	ExtremeXOS 32.6.3	<ul style="list-style-type: none"> <li>• Monitor</li> <li>• Template- and device-level configuration</li> <li>• SSH Proxy*</li> <li>• Supplemental CLI*</li> </ul>	<ul style="list-style-type: none"> <li>• Monitor</li> <li>• Template- and device-level configuration</li> <li>• SSH Proxy*</li> <li>• Supplemental CLI*</li> </ul>
X440-G2-24t-10GE4	ExtremeXOS 32.6.3	<ul style="list-style-type: none"> <li>• Monitor</li> <li>• Template- and device-level configuration</li> <li>• SSH Proxy*</li> <li>• Supplemental CLI*</li> </ul>	<ul style="list-style-type: none"> <li>• Monitor</li> <li>• Template- and device-level configuration</li> <li>• SSH Proxy*</li> <li>• Supplemental CLI*</li> </ul>
X440-G2-48p-10GE4	ExtremeXOS 32.6.3	<ul style="list-style-type: none"> <li>• Monitor</li> <li>• Template- and device-level configuration</li> <li>• SSH Proxy*</li> <li>• Supplemental CLI*</li> </ul>	<ul style="list-style-type: none"> <li>• Monitor</li> <li>• Template- and device-level configuration</li> <li>• SSH Proxy*</li> <li>• Supplemental CLI*</li> </ul>
X440-G2-48t-10GE4	ExtremeXOS 32.6.3	<ul style="list-style-type: none"> <li>• Monitor</li> <li>• Template- and device-level configuration</li> <li>• SSH Proxy*</li> <li>• Supplemental CLI*</li> </ul>	<ul style="list-style-type: none"> <li>• Monitor</li> <li>• Template- and device-level configuration</li> <li>• SSH Proxy*</li> <li>• Supplemental CLI*</li> </ul>
X450-G2-24p-GE4	ExtremeXOS 32.6.3	<ul style="list-style-type: none"> <li>• Monitor</li> <li>• Template- and device-level configuration</li> <li>• SSH Proxy*</li> <li>• Supplemental CLI*</li> </ul>	Monitor
X450-G2-24p-10GE4	ExtremeXOS 32.6.3	<ul style="list-style-type: none"> <li>• Monitor</li> <li>• Template- and device-level configuration</li> <li>• SSH Proxy*</li> <li>• Supplemental CLI*</li> </ul>	Monitor
X450-G2-48p-10GE4	ExtremeXOS 32.6.3	<ul style="list-style-type: none"> <li>• Monitor</li> <li>• Template- and device-level configuration</li> <li>• SSH Proxy*</li> <li>• Supplemental CLI*</li> </ul>	Monitor

Device Model	Latest Supported Release	Standalone Support	Stack Support
X460-G2-24p-10GE4	ExtremeXOS 32.6.3	<ul style="list-style-type: none"> <li>• Monitor</li> <li>• Template- and device-level configuration</li> <li>• SSH Proxy*</li> <li>• Supplemental CLI*</li> </ul>	Monitor
X460-G2-48p-10GE4	ExtremeXOS 32.6.3	<ul style="list-style-type: none"> <li>• Monitor</li> <li>• Template- and device-level configuration</li> <li>• SSH Proxy*</li> <li>• Supplemental CLI*</li> </ul>	Monitor
X465-24W	ExtremeXOS 32.6.3	<ul style="list-style-type: none"> <li>• Monitor</li> <li>• Template- and device-level configuration</li> <li>• SSH Proxy*</li> <li>• Supplemental CLI*</li> </ul>	Monitor
X465-48W	ExtremeXOS 32.6.3	<ul style="list-style-type: none"> <li>• Monitor</li> <li>• Template- and device-level configuration</li> <li>• SSH Proxy*</li> <li>• Supplemental CLI*</li> </ul>	Monitor
X465-24MU	ExtremeXOS 32.6.3	<ul style="list-style-type: none"> <li>• Monitor</li> <li>• Template- and device-level configuration</li> <li>• SSH Proxy*</li> <li>• Supplemental CLI*</li> </ul>	Monitor
X465-48P	ExtremeXOS 32.6.3	<ul style="list-style-type: none"> <li>• Monitor</li> <li>• Template- and device-level configuration</li> <li>• SSH Proxy*</li> <li>• Supplemental CLI*</li> </ul>	Monitor
X465-24MU-24W	ExtremeXOS 32.6.3	<ul style="list-style-type: none"> <li>• Monitor</li> <li>• Template- and device-level configuration</li> <li>• SSH Proxy*</li> <li>• Supplemental CLI*</li> </ul>	Monitor

**Note**

\* SSH Proxy and Supplemental CLI can be used for configuring additional parameters not currently available within template or device-level configurations.

## VOSS

Device Model	Latest Supported Release	Standalone Support	Stack Support
VSP7432CQ	VOSS 9.0	<ul style="list-style-type: none"> <li>• Monitor</li> <li>• Template- and device-level configuration</li> <li>• SSH Proxy*</li> <li>• Supplemental CLI*</li> </ul>	Not supported
VSP7400-48Y	VOSS 9.0	<ul style="list-style-type: none"> <li>• Monitor</li> <li>• Template- and device-level configuration</li> <li>• SSH Proxy*</li> <li>• Supplemental CLI*</li> </ul>	Not supported
VSP4900-48P	VOSS 9.0	<ul style="list-style-type: none"> <li>• Monitor</li> <li>• Template- and device-level configuration</li> <li>• SSH Proxy*</li> <li>• Supplemental CLI*</li> </ul>	Not supported
VSP4900-24XE	VOSS 9.0	<ul style="list-style-type: none"> <li>• Monitor</li> <li>• Template- and device-level configuration</li> <li>• SSH Proxy*</li> <li>• Supplemental CLI*</li> </ul>	Not supported
VSP4900-24S	VOSS 9.0	<ul style="list-style-type: none"> <li>• Monitor</li> <li>• Template- and device-level configuration</li> <li>• SSH Proxy*</li> <li>• Supplemental CLI*</li> </ul>	Not supported
VSP4900-12MXU-12XE	VOSS 9.0	<ul style="list-style-type: none"> <li>• Monitor</li> <li>• Template- and device-level configuration</li> <li>• SSH Proxy*</li> <li>• Supplemental CLI*</li> </ul>	Not supported

Device Model	Latest Supported Release	Standalone Support	Stack Support
XA1480	VOSS 8.10	<ul style="list-style-type: none"> <li>• Monitor</li> <li>• Template- and device-level configuration</li> <li>• SSH Proxy*</li> <li>• Supplemental CLI*</li> </ul>	Not supported
XA1440	VOSS 8.10	<ul style="list-style-type: none"> <li>• Monitor</li> <li>• Template- and device-level configuration</li> <li>• SSH Proxy*</li> <li>• Supplemental CLI*</li> </ul>	Not supported

**Note**

\* SSH Proxy and Supplemental CLI can be used for configuring additional parameters not currently available within template or device-level configurations.

## IQ Engine (Cloud Native)

Device Model	Latest Supported Release
SR2024 <a href="#">End of Life</a>	IQ Engine 6.5.12
SR2024P <a href="#">End of Life</a>	IQ Engine 6.5.12
SR2124P <a href="#">End of Life</a>	IQ Engine 6.5.12
SR2148P <a href="#">End of Life</a>	IQ Engine 6.5.12
SR2208P	FASTPATH 8.2.0.2 v1.0.1.29 ExtremeCloud IQ Agent 1.1.31
SR2224P	FASTPATH 8.2.0.2 v1.0.1.29 ExtremeCloud IQ Agent 1.1.31
SR2324P	FASTPATH 8.2.0.2 v1.0.1.29 ExtremeCloud IQ Agent 1.1.31
SR2348P	FASTPATH 8.2.0.2 v1.0.1.29 ExtremeCloud IQ Agent 1.1.31

## Dell EMC

Device Model	Latest Supported Release
N3132PX	IQAgent 1.1.29
N3024EF	IQAgent 1.1.29
N3024EP	IQAgent 1.1.29
N3024ET	IQAgent 1.1.29
N3048EP	IQAgent 1.1.29
N3048ET	IQAgent 1.1.29
N3024	IQAgent 1.1.29
N3024F	IQAgent 1.1.29
N3024P	IQAgent 1.1.29
N3048	IQAgent 1.1.29
N3048P	IQAgent 1.1.29
N2128PX	IQAgent 1.1.29
N2024	IQAgent 1.1.29
N2024P	IQAgent 1.1.29
N2048	IQAgent 1.1.29
N2048P	IQAgent 1.1.29
N1524	IQAgent 1.1.29
N1524P	IQAgent 1.1.29
N1548	IQAgent 1.1.29
N1548P	IQAgent 1.1.29
N1108T-ON	IQAgent 1.1.29
N1108P-ON	IQAgent 1.1.29
N1124T-ON	IQAgent 1.1.29
N1124P-ON	IQAgent 1.1.29
N1148T-ON	IQAgent 1.1.29
N1148P-ON	IQAgent 1.1.29

## Routers

Device Model	Latest Supported Release	Standalone Support
BR100 <a href="#">End of Life</a>	IQ Engine 6.5.12	<i>Not supported in ExtremeCloud IQ</i>
BR200 <a href="#">End of Life</a>	IQ Engine 6.5.12	<i>Not supported in ExtremeCloud IQ</i>



Device Model	Latest Supported Release	Standalone Support
BR200-LTE-VZ <a href="#">End of Life</a>	IQ Engine 6.5.12	<i>Not supported in ExtremeCloud IQ</i>
BR200WP <a href="#">End of Life</a>	IQ Engine 6.9.7	
XR200P	IQ Engine 6.9.7	Platform support introduced with IQ Engine 6.9.2
XR600	IQ Engine 10.0.11	Platform support introduced with IQ Engine 9.0.1
XR600P	IQ Engine 10.0.11	Platform support introduced with IQ Engine 9.0.1
VGVA	IQ Engine 6.9.7	

## ExtremeCloud IQ Site Engine

ExtremeCloud IQ Site Engine Version	Supported Features
23.04.10	<ul style="list-style-type: none"> <li>• License allocation</li> <li>• Device Statistics</li> <li>• Port Statistics</li> <li>• Unmanage/Manage device</li> <li>• Device Group to CCG mapping</li> <li>• Open Site Engine with SSO</li> <li>• Stack members</li> </ul>
23.04.11	<ul style="list-style-type: none"> <li>• License allocation</li> <li>• Device Statistics</li> <li>• Port Statistics</li> <li>• Unmanage/Manage device</li> <li>• Device Group to CCG mapping</li> <li>• Open Site Engine with SSO</li> <li>• Stack members</li> </ul>
23.04.12	<ul style="list-style-type: none"> <li>• License allocation</li> <li>• Device Statistics</li> <li>• Port Statistics</li> <li>• Unmanage/Manage device</li> <li>• Device Group to CCG mapping</li> <li>• Open Site Engine with SSO</li> <li>• Stack members</li> </ul>

ExtremeCloud IQ Site Engine Version	Supported Features
23.07.10	<ul style="list-style-type: none"> <li>• License allocation</li> <li>• Device Assignment to the ExtremeCloud IQ Location</li> <li>• Device Statistics</li> <li>• Port Statistics</li> <li>• Unmanage/Manage device</li> <li>• Device Group to CCG mapping</li> <li>• Open Site Engine with SSO</li> <li>• Stack members</li> <li>• NAC details update for wireless end-systems</li> </ul>
23.07.11	<ul style="list-style-type: none"> <li>• License allocation</li> <li>• Device Assignment to the ExtremeCloud IQ Location</li> <li>• Device Statistics</li> <li>• Port Statistics</li> <li>• Unmanage/Manage device</li> <li>• Device Group to CCG mapping</li> <li>• Open Site Engine with SSO</li> <li>• Stack members</li> <li>• NAC details update for wireless end-systems</li> </ul>
23.07.12	<ul style="list-style-type: none"> <li>• License allocation</li> <li>• Device Assignment to the ExtremeCloud IQ Location</li> <li>• Device Statistics</li> <li>• Port Statistics</li> <li>• Unmanage/Manage device</li> <li>• Device Group to CCG mapping</li> <li>• Open Site Engine with SSO</li> <li>• Stack members</li> <li>• NAC details update for wireless end-systems</li> </ul>
23.07.13	<ul style="list-style-type: none"> <li>• License allocation</li> <li>• Device Assignment to the ExtremeCloud IQ Location</li> <li>• Device Statistics</li> <li>• Port Statistics</li> <li>• Unmanage/Manage device</li> <li>• Device Group to CCG mapping</li> <li>• Open Site Engine with SSO</li> <li>• Stack members</li> <li>• NAC details update for wireless end-systems</li> </ul>

ExtremeCloud IQ Site Engine Version	Supported Features
23.11.10	<ul style="list-style-type: none"> <li>• License allocation</li> <li>• Device Assignment to the ExtremeCloud IQ Location</li> <li>• Device Statistics</li> <li>• Port Statistics</li> <li>• Unmanage/Manage device</li> <li>• Device Group to CCG mapping</li> <li>• Open Site Engine with SSO</li> <li>• Stack members</li> <li>• NAC details update for wireless end-systems</li> </ul>
23.11.11	<ul style="list-style-type: none"> <li>• License allocation</li> <li>• Device Assignment to the ExtremeCloud IQ Location</li> <li>• Device Statistics</li> <li>• Port Statistics</li> <li>• Unmanage/Manage device</li> <li>• Device Group to CCG mapping</li> <li>• Open Site Engine with SSO</li> <li>• Stack members</li> <li>• NAC details update for wireless end-systems</li> </ul>
23.11.12	<ul style="list-style-type: none"> <li>• License allocation</li> <li>• Device Assignment to the ExtremeCloud IQ Location</li> <li>• Device Statistics</li> <li>• Port Statistics</li> <li>• Unmanage/Manage device</li> <li>• Device Group to CCG mapping</li> <li>• Open Site Engine with SSO</li> <li>• Stack members</li> <li>• NAC details update for wireless end-systems</li> </ul>
24.2.10	<ul style="list-style-type: none"> <li>• License allocation</li> <li>• Device Assignment to the ExtremeCloud IQ Location</li> <li>• Device Statistics</li> <li>• Port Statistics</li> <li>• Unmanage/Manage device</li> <li>• Device Group to CCG mapping</li> <li>• Open Site Engine with SSO</li> <li>• Stack members</li> <li>• NAC details update for wireless end-systems</li> <li>• Wired end-systems reported to ExtremeCloud IQ</li> </ul>

ExtremeCloud IQ Site Engine Version	Supported Features
24.2.11	<ul style="list-style-type: none"> <li>• License allocation</li> <li>• Device Assignment to the ExtremeCloud IQ Location</li> <li>• Device Statistics</li> <li>• Port Statistics</li> <li>• Unmanage/Manage device</li> <li>• Device Group to CCG mapping</li> <li>• Open Site Engine with SSO</li> <li>• Stack members</li> <li>• NAC details update for wireless end-systems</li> <li>• Wired end-systems reported to ExtremeCloud IQ</li> </ul>
24.2.12	<ul style="list-style-type: none"> <li>• License allocation</li> <li>• Device Assignment to the ExtremeCloud IQ Location</li> <li>• Device Statistics</li> <li>• Port Statistics</li> <li>• Unmanage/Manage device</li> <li>• Device Group to CCG mapping</li> <li>• Open Site Engine with SSO</li> <li>• Stack members</li> <li>• NAC details update for wireless end-systems</li> <li>• Wired end-systems reported to ExtremeCloud IQ</li> </ul>

## ExtremeCloud IQ CoPilot

ExtremeCloud IQ CoPilot Feature	Minimum Firmware				
	IQ Engine	Switch Engine	Fabric Engine	Extreme XOS	VOSS
WiFi Efficiency	10.5.2*	--	--	--	--
WiFi Capacity	10.5.2*	--	--	--	--
PoE Stability	10.5.2*	32.1	8.6	32.1	8.6
Port Efficiency	10.5.2**	31.7	8.6	31.7	8.6
DFS Recurrence	10.5.2*	--	--	--	--
Adverse Traffic Patterns	10.5.2*	31.7	8.6	31.7	8.6
Wireless Connectivity Experience	10.5.2	--	--	--	--
Wired Connectivity Experience	--	31.7	8.6	31.7	8.6

\*beta support from 10.4

\*\*beta support from 10.5.1

## ExtremeCloud A3

ExtremeCloud A3 Version	Supported Features
5.0.1-4	<ul style="list-style-type: none"> <li>• Licensing</li> <li>• Status Monitoring</li> <li>• SSO</li> <li>• Client Details</li> </ul>

## Supported Browsers and Display Settings

### Desktop and Mobile Browser Support



#### Note

ExtremeCloud IQ does not support 32-bit browsers.

**Table 4: Desktop Browsers**

Desktop Browsers	Version Supported
Chrome	v116
Edge	v115
Firefox	v115
Internet Explorer	Not supported
Opera	v60
Safari	v13

**Table 5: Mobile Browsers**

Mobile Browsers	Version Supported
Android Webview	v73
Chrome for Android	v116
Edge	v79
Firefox for Android	v67
Opera for Android	v52
Safari for iOS	v13
Samsung Internet	Not supported

### Display Settings

ExtremeCloud IQ supports display resolutions of 1280 x 1024 or higher.