



# Extreme Fabric Automation

Hyper-V Integration Guide, 2.1.0

9036666-00 Rev AA  
June 2020



Copyright © 2020 Extreme Networks, Inc. All rights reserved.

## Legal Notice

Extreme Networks, Inc. reserves the right to make changes in specifications and other information contained in this document and its website without prior notice. The reader should in all cases consult representatives of Extreme Networks to determine whether any such changes have been made.

The hardware, firmware, software or any specifications described or referred to in this document are subject to change without notice.

## Trademarks

Extreme Networks and the Extreme Networks logo are trademarks or registered trademarks of Extreme Networks, Inc. in the United States and/or other countries.

All other names (including any product names) mentioned in this document are the property of their respective owners and may be trademarks or registered trademarks of their respective companies/owners.

For additional information on Extreme Networks trademarks, please see:

[www.extremenetworks.com/company/legal/trademarks](http://www.extremenetworks.com/company/legal/trademarks)

## Open Source Declarations

Some software files have been licensed under certain open source or third-party licenses. End-user license agreements and open source declarations can be found at:

[www.extremenetworks.com/support/policies/software-licensing](http://www.extremenetworks.com/support/policies/software-licensing)



# Table of Contents

---

<b>Preface.....</b>	<b>4</b>
Text Conventions.....	4
Documentation and Training.....	6
Getting Help.....	6
Subscribe to Service Notifications.....	6
Providing Feedback.....	7
<b>Introduction.....</b>	<b>8</b>
Introduction to Extreme Fabric Automation.....	8
Supported Platforms Matrix.....	9
Microsoft Hyper-V.....	10
System Center Virtual Machine Manager.....	10
How the EFA Hyper-V Service Works .....	10
<b>Before You Begin.....</b>	<b>13</b>
Limitations of the Hyper-V Service .....	13
Microsoft Hyper-V and SCVMM Configurations .....	13
<b>EFA Hyper-V Service Configuration.....</b>	<b>14</b>
Integrating EFA Hyper-V Service .....	14
Managing Microsoft Hyper-V Tenants.....	14
Example Network .....	14
Verify Fabric Topology.....	15
Add Devices To Your Fabric .....	16
Create the SCVMM Tenant.....	18
Register Microsoft SCVMM Server With EFA.....	19
Verify Microsoft SCVMM Host Registration.....	20
<b>EFA Hyper-V Service Commands.....</b>	<b>21</b>
efa scvmm.....	22
efa scvmm register .....	23
efa scvmm delete.....	24
efa scvmm list.....	25
efa scvmm update.....	26
efa scvmm links.....	27
efa scvmm settings .....	29



# Preface

---

This section describes the text conventions used in this document, where you can find additional information, and how you can provide feedback to us.




## Text Conventions

---



Unless otherwise noted, information in this document applies to all supported environments for the products in question. Exceptions, like command keywords associated with a specific software version, are identified in the text.

When a feature, function, or operation pertains to a specific hardware product, the product name is used. When features, functions, and operations are the same across an entire product family, such as ExtremeSwitching switches or SLX routers, the product is referred to as *the switch* or *the router*.

**Table 1: Notes and warnings**

Icon	Notice type	Alerts you to...
	Tip	Helpful tips and notices for using the product.
	Note	Useful information or instructions.
	Important	Important features or instructions.

**Table 1: Notes and warnings (continued)**

Icon	Notice type	Alerts you to...
	Caution	Risk of personal injury, system damage, or loss of data.
	Warning	Risk of severe personal injury.

**Table 2: Text**

Convention	Description
<code>screen displays</code>	This typeface indicates command syntax, or represents information as it appears on the screen.
The words <i>enter</i> and <i>type</i>	When you see the word <i>enter</i> in this guide, you must type something, and then press the Return or Enter key. Do not press the Return or Enter key when an instruction simply says <i>type</i> .
<b>Key</b> names	Key names are written in boldface, for example <b>Ctrl</b> or <b>Esc</b> . If you must press two or more keys simultaneously, the key names are linked with a plus sign (+). Example: Press <b>Ctrl+Alt+Del</b>
<i>Words in italicized type</i>	Italics emphasize a point or denote new terms at the place where they are defined in the text. Italics are also used when referring to publication titles.
<b>NEW!</b>	New information. In a PDF, this is searchable text.

**Table 3: Command syntax**

Convention	Description
<b>bold</b> text	Bold text indicates command names, keywords, and command options.
<i>italic</i> text	Italic text indicates variable content.
[ ]	Syntax components displayed within square brackets are optional. Default responses to system prompts are enclosed in square brackets.
{ <b>x</b>   <b>y</b>   <b>z</b> }	A choice of required parameters is enclosed in curly brackets separated by vertical bars. You must select one of the options.
<b>x</b>   <b>y</b>	A vertical bar separates mutually exclusive elements.
< >	Nonprinting characters, such as passwords, are enclosed in angle brackets.
...	Repeat the previous element, for example, <i>member</i> [ <i>member</i> ...].
\	In command examples, the backslash indicates a “soft” line break. When a backslash separates two lines of a command input, enter the entire command at the prompt without the backslash.

---

## Documentation and Training

---

Find Extreme Networks product information at the following locations:

[Current Product Documentation](#)

[Release Notes](#)

[Hardware/software compatibility matrices](#) for Campus and Edge products

[Supported transceivers and cables](#) for Data Center products

[Other resources](#), like white papers, data sheets, and case studies

Extreme Networks offers product training courses, both online and in person, as well as specialized certifications. For details, visit [www.extremenetworks.com/education/](http://www.extremenetworks.com/education/).

---

## Getting Help

---

If you require assistance, contact Extreme Networks using one of the following methods:

### Extreme Portal

Search the GTAC (Global Technical Assistance Center) knowledge base; manage support cases and service contracts; download software; and obtain product licensing, training, and certifications.

### The Hub

A forum for Extreme Networks customers to connect with one another, answer questions, and share ideas and feedback. This community is monitored by Extreme Networks employees, but is not intended to replace specific guidance from GTAC.

### Call GTAC

For immediate support: (800) 998 2408 (toll-free in U.S. and Canada) or 1 (408) 579 2826. For the support phone number in your country, visit: [www.extremenetworks.com/support/contact](http://www.extremenetworks.com/support/contact)

Before contacting Extreme Networks for technical support, have the following information ready:

- Your Extreme Networks service contract number, or serial numbers for all involved Extreme Networks products
- A description of the failure
- A description of any actions already taken to resolve the problem
- A description of your network environment (such as layout, cable type, other relevant environmental information)
- Network load at the time of trouble (if known)
- The device history (for example, if you have returned the device before, or if this is a recurring problem)
- Any related RMA (Return Material Authorization) numbers

## Subscribe to Service Notifications

You can subscribe to email notifications for product and software release announcements, Vulnerability Notices, and Service Notifications.

1. Go to [www.extremenetworks.com/support/service-notification-form](http://www.extremenetworks.com/support/service-notification-form).
2. Complete the form (all fields are required).

3. Select the products for which you would like to receive notifications.

**Note**

You can modify your product selections or unsubscribe at any time.

4. Select **Submit**.

## Providing Feedback

---

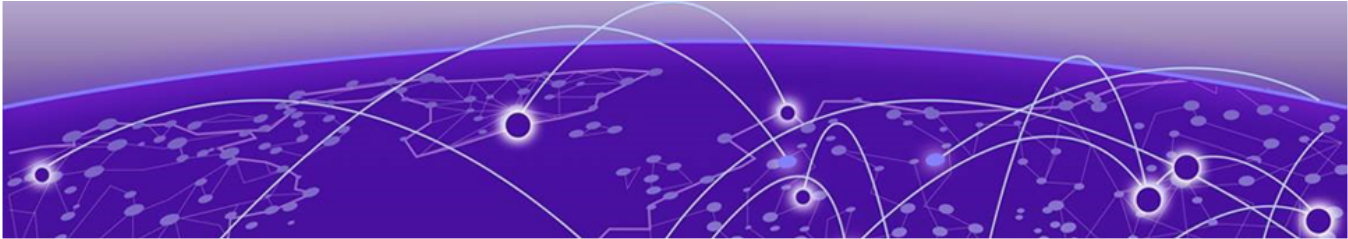
The Information Development team at Extreme Networks has made every effort to ensure the accuracy and completeness of this document. We are always striving to improve our documentation and help you work better, so we want to hear from you. We welcome all feedback, but we especially want to know about:

- Content errors, or confusing or conflicting information.
- Improvements that would help you find relevant information in the document.
- Broken links or usability issues.

If you would like to provide feedback, you can do so in three ways:

- In a web browser, select the feedback icon and complete the online feedback form.
- Access the feedback form at <https://www.extremenetworks.com/documentation-feedback/>.
- Email us at [documentation@extremenetworks.com](mailto:documentation@extremenetworks.com).

Provide the publication title, part number, and as much detail as possible, including the topic heading and page number if applicable, as well as your suggestions for improvement.



# Introduction

---

[Introduction to Extreme Fabric Automation](#) on page 8

[Microsoft Hyper-V](#) on page 10

[How the EFA Hyper-V Service Works](#) on page 10

## Introduction to Extreme Fabric Automation

---

Extreme Fabric Automation (EFA) is a micro-services-based scalable automation application.

EFA orchestrates the following:

- The life cycle of
  - Small Data Center (small DC) fabrics based on Non-Clos topology
  - 3- or 5-stage IP Clos Fabric
- Tenant-aware Layer 2 and Layer 3 networks
- Integration with ecosystems that support HCI (Hyper Convergence Infrastructure) Service
  - VMware vCenter
  - OpenStack
  - Microsoft Hyper-V

The key tenets of this orchestration are as follows:

- Conformance to the EVD (Extreme Validated Design) for IP Fabrics: <https://www.extremenetworks.com/resources/extreme-validated-design/extreme-ip-fabric-architecture/>
- Speed of provisioning
- Seamless installation and deployment mechanism
- High in performance, low in resource utilization, with minimal touch points
- Programmable containerized services, through an industry-standard Open API (<https://www.openapis.org/>)-based programmable interface
- Easy-to-use CLI commands to manage devices in an IP Fabric and in Tenant networks

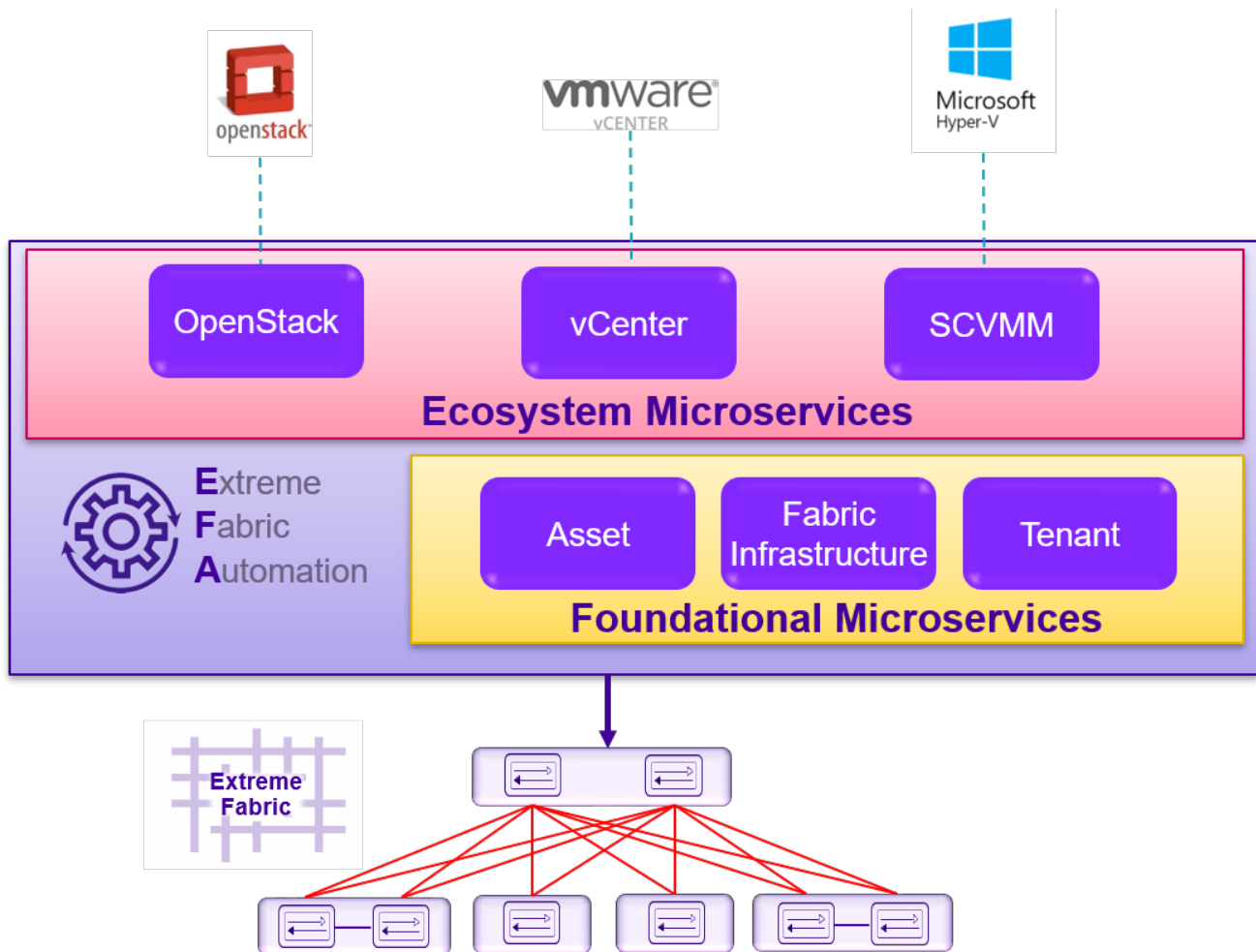
EFA consists of core containerized services that interact with each other and with other infrastructure services to provide the core functions of IP Fabric automation.

<b>Asset Service</b>	Provides the secure credential store and deep discovery of physical and logical assets of the managed devices, and publishes the asset refresh or change events to other services.
<b>Fabric Service</b>	Helps orchestrate and visualize the BGP and EVPN-based 3- and 5-stage Clos networks.



Tenant Service	Helps manage the Tenants, Tenant Networks, and end points, fully leveraging the knowledge of assets and the underlying fabric.
Inventory Service	Inventory Service is a REST layer on top of device inventory details, with the ability to filter data based on certain fields. Inventory Service securely stores device credentials in encrypted form and makes them available to different components, such as Fabric Services and the Tenant App.

The following figure illustrates the application functionality in provisioning and discovery.



**Figure 1: Fabric Automation Microservices**

### Supported Platforms Matrix

Extreme Fabric Automation is supported on the following platforms.

Platform	SLXOS version	Role
SLX-9140	18s.1.01 /a /c, 18s.1.03	Leaf /Small DC Fabric
SLX-9240	18s.1.01 /a /c, 18s.1.03	Leaf/Spine/Super Spine
SLX-9150	20.1.x	Leaf/Small DC Fabric

SLX-9250	20.1.x	Leaf/Spine/Super Spine/Small DC Fabric
SLX-9030-48S	18x.1.00 /a /b	Leaf
SLX-9030-48T	18x.1.00 /a /b	Leaf
SLX-9540	18r.1.00aa /b /c/cc, 20.1.x	Leaf/Border leaf
SLX-9640	20.1.x	Border Leaf
SLX-9850	18r.1.00aa /b /c	Spine/Super Spine

EFA provides seamless support for upgrade and downgrade of the devices across pre-20.1.x and 20.1.x images to keep the device and application configuration in sync.

## Microsoft Hyper-V

Microsoft's *Hyper-V* is a virtualization product that enables you to create and run multiple *virtual machines* (VM) on supported hardware. You can create multiple operating systems on one physical computer. Each installed operating system can interact with each other while being isolated from each other. Virtualization is used to optimize and increase the efficiency in the use of your resources. This frees up hardware resources for other uses.

*Hyper-V Server* is an inbuilt feature of *Microsoft Windows Server Datacenter Edition* and must be enabled before you can use it. Once enabled, Hyper-V Manager and associated PowerShell commands also become available.

Hyper-V Servers are managed using the inbuilt Hyper-V Manager or using the *System Center Virtual Machine Manager* (SCVMM) software installed on a different device. With the Hyper-V Manager, you can manage virtual machines on a single instance of Hyper-V Server on which the Hyper-V Manager is installed. SCVMM is used to manage a larger setup containing a large number of Hyper-V Servers.

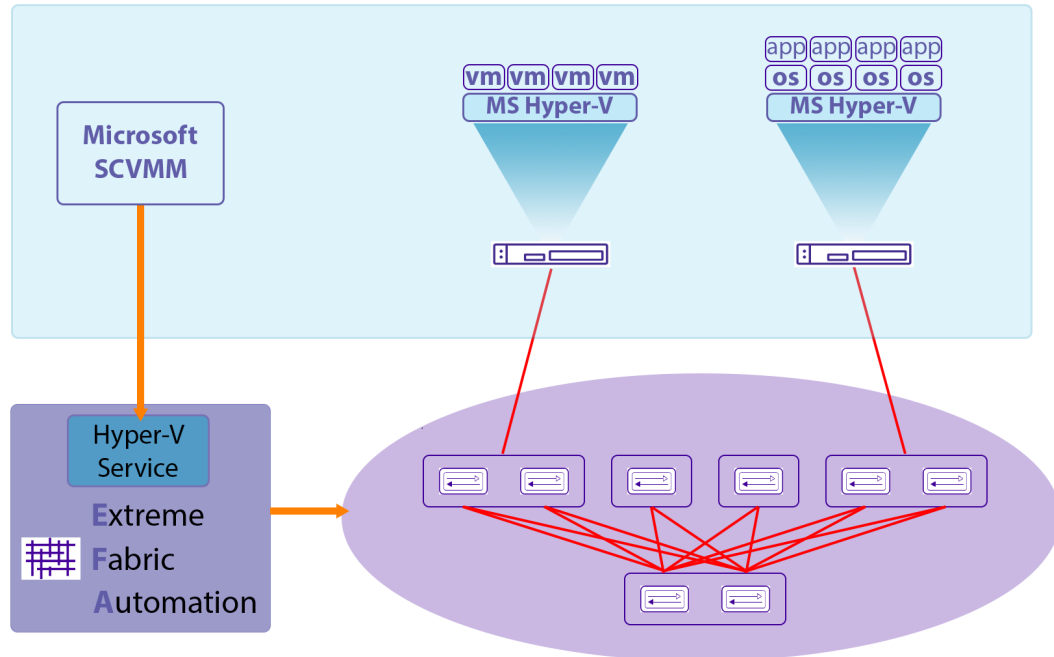
## System Center Virtual Machine Manager

Microsoft's *System Center Virtual Machine Manager* (SCVMM) is a tool that provides a single location from which you can configure and manage your datacenters. Datacenter components such as virtualization servers, networking components, and storage resources can be managed through the SCVMM tool. You can manage multiple instances of Microsoft's *Hyper-V Server* virtualization platform and those virtual machines that are hosted on them from within SCVMM.

SCVMM is installed on a device that is different from those hosting your Hyper-V Servers.

## How the EFA Hyper-V Service Works

Use Extreme Networks' Extreme Fabric Automation to automate the configuration of the datacenter's physical network hardware once you have finished configuring your Hyper-V Servers and their associated virtual machines.



**Figure 2: Hyper-V Service Overview**

EFA polls the *System Center Virtual Machine Manager* (SCVMM) tool to fetch the hardware configurations from the Hyper-V Servers managed by it.

SCVMM communicates with the Hyper-V servers, that it manages, using PowerShell commands and through proprietary communication mechanisms. SCVMM also provides a set of PowerShell commands that EFA's Hyper-V service uses to fetch information from it.

The following information is queried from the SCVMM server.

- Hyper-V Servers
- Virtual Machines
- VM Networks
- Logical Networks
- Uplink Port Profiles
- Virtual Switches
- vNIC
- pNIC
- VLANS

EFA fetches (pulls) the above configuration information from SCVMM periodically. It then interacts with *EFA Tenant Service* to configure the *End Point Groups* (EPG). Once configured, this step configures the appropriate VLANS on the connected ports on the switches.

Before you can use EFA Hyper-V Service to configure your physical hardware, the following configurations must be performed on the various Hyper-V Servers and on SCVMM. Datacenter Admins must configure local entities in their setups. These entities are:

- Virtual Machines
- Virtual Network Adapters
- Virtual Switches
- Logical Networks
- Virtual Machine Networks

Admins should also configure the Physical Network Adapters on their Hyper-V Servers to provide physical network connection ports to the fabric switches.



# Before You Begin

---

[Limitations of the Hyper-V Service](#) on page 13

[Microsoft Hyper-V and SCVMM Configurations](#) on page 13

## Limitations of the Hyper-V Service

---

EFA Hyper-V Service has the following limitations and restrictions:

- EFA does not manage Microsoft licenses. Users are responsible for the compliance with Microsoft's licensing terms and compliance.
- EFA cannot detect and fix Hyper-V connection issues.

## Microsoft Hyper-V and SCVMM Configurations

---

No configuration changes are required on either the hosts running Hyper-V or on the server running SCVMM.

You must create a *Windows* local user on the Microsoft SCVMM server with the following characteristics:

- The user name must be same as the one used when you registered the Microsoft SCVMM server using the `efa scvmm register` command.
- This user should have the same password as the Windows domain user.
- This user must have privileges to run remote powershell commands on the Microsoft SCVMM server.



# EFA Hyper-V Service Configuration

---

[Integrating EFA Hyper-V Service](#) on page 14

[Verify Fabric Topology](#) on page 15

[Add Devices To Your Fabric](#) on page 16

[Create the SCVMM Tenant](#) on page 18

[Register Microsoft SCVMM Server With EFA](#) on page 19

[Verify Microsoft SCVMM Host Registration](#) on page 20

## Integrating EFA Hyper-V Service

---

To integrate your Microsoft Hyper-V hosts with the EFA Hyper-V service, you need to do the following steps.

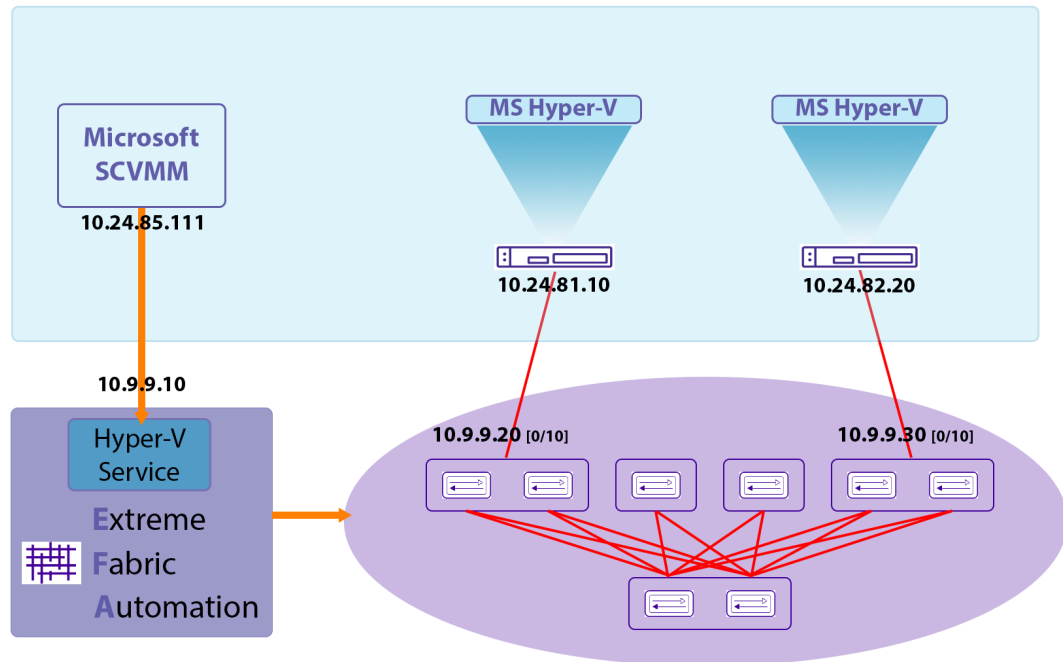
1. Create or modify your fabric as required.
2. Create or modify your tenant information as required.
3. Register your new Microsoft System Center Virtual Machine Manager (SCVMM) as a tenant of the fabric.
4. Verify your integration.

## Managing Microsoft Hyper-V Tenants

The primary task of managing your existing Microsoft Hyper-V hosts as tenants would be to update them periodically or when you add new devices to your network. Another task would be to delete these servers when not required.

## Example Network

The following network diagram will be used throughout this section to explain the various configurations.



**Figure 3: Sample Network Diagram**

This table lists the devices, their IP/Port information, and their role within the example network.

IP Address & Port	Device & Role
10.24.85.111	Microsoft System Center Virtual Machine Manager
10.24.81.10	Microsoft Hyper-V Host #1
10.24.82.20	Microsoft Hyper-V Host #2
10.9.9.10	EFA Server
10.9.9.20 [0/10]	Fabric Leaf Node #1. This node is connected to the Microsoft Hyper-V host with IP address 10.24.81.10 on port 10.
10.9.9.30 [0/10]	Fabric Leaf Node #2. This node is connected to the Microsoft Hyper-V host with IP address 10.24.82.20 on port 10.

## Verify Fabric Topology

### About This Task

Verify that the fabric devices that you wish to add are present in your fabric, and once verified, fetch additional information for each of these devices.

### Procedure

Execute the `efa fabric show` command.

```
efa fabric show
```

The command returns information for all the spine and leaf devices in your fabric.

## Example

The following example lists the devices that make up your fabric.

```
$ efa fabric show

Fabric Name: efa-fabric-1, Fabric Description: Fabric #1, Fabric Stage: 3, Fabric Type:
clos
+-----+-----+-----+-----+-----+-----+-----+
+-----+-----+-----+-----+-----+
| IP ADDRESS | POD | HOST NAME | ASN | ROLE | DEVICE STATE | APP STATE | CONFIG
GEN REASON | PENDING CONFIGS | VTLB ID | LB ID |
+-----+-----+-----+-----+-----+-----+-----+
| 10.10.10.10 | | SLX | 64512 | spine | provisioned | cfg in-sync |
NA | NA | | NA | 1 | |
| 10.10.10.20 | | SLX | 64512 | spine | provisioned | cfg in-sync |
NA | NA | | NA | 1 | |
| 10.9.9.20 | | FRE-134 | 65001 | leaf | provisioned | cfg in-sync |
NA | NA | | 2 | 1 | |
| 10.9.9.30 | | FRE-135 | 65001 | leaf | provisioned | cfg in-sync |
NA | NA | | 2 | 1 | |
| 10.9.9.40 | | Orca-74 | 65000 | leaf | provisioned | cfg in-sync |
NA | NA | | 2 | 1 | |
| 10.9.9.50 | | Orca-76 | 65000 | leaf | provisioned | cfg in-sync |
NA | NA | | 2 | 1 | |
| 10.9.9.60 | | Avalanche-11 | 65002 | leaf | provisioned | cfg in-sync |
NA | NA | | 2 | 1 | |
| 10.9.9.70 | | Avalanche-46 | 65002 | leaf | provisioned | cfg in-sync |
NA | NA | | 2 | 1 | |
+-----+-----+-----+-----+-----+-----+-----+
+-----+-----+-----+-----+-----+

CONFIG GEN REASON:
LD - Link Delete, LA - Link Add, IU - Interface Update
MD - MCT Delete, OD - Overlay Gateway Delete, OU - Overlay Gateway Update, ED - Evpn
Delete
DD - Dependent Device Update, DA - Device Add, DR - Device ReAdd, ASN - Asn Update, HN -
HostName Update, NA - Not Applicable

PENDING CONFIGS:
MCT - MCT Cluster, O - Overlay Gateway, SYSP - System Properties, INTIP - Interface IP
C/D/U - Create/Delete/Update, PA/PD - Port Add/Port Delete

For App or Device Error/Failure reason, run "efa fabric error show" for details
For config refresh reason, run "efa fabric debug config-gen-reason" for details

--- Time Elapsed: 6.1824056s ---
```

## What to Do Next

If needed, create a new fabric and/or add new devices to an existing fabric.

## Add Devices To Your Fabric

### About This Task

Add devices to a new fabric or to an existing fabric. Do the following:



## Procedure

1. Use the `efa fabric device add` command to add a single device. To add multiple devices in a single command, use the `add-bulk` option instead.

```
efa fabric device add
efa fabric device add-bulk
```

2. Use the `efa fabric configure` command with the `--force` option to force the fabric to update itself by removing and adding all devices that make up the fabric. When the fabric comes up again, it will include the newly added devices.

## Example

The following command adds two leaf devices and a spine device to an existing fabric.

```
$ efa fabric device add-bulk --name efa-fabric-1 --leaf 10.9.9.80,10.9.9.90 --spine
10.10.10.30 --username
administrator@mshyperv.local --password 'aBc123#'

$ efa fabric show

Fabric Name: efa-fabric-1, Fabric Description: Fabric #1, Fabric Stage: 3, Fabric Type:
clos
+-----+-----+-----+-----+-----+-----+-----+-----+
+-----+-----+-----+-----+-----+-----+-----+-----+
| IP ADDRESS   | POD | HOST NAME   | ASN  | ROLE  | DEVICE STATE | APP STATE | CONFIG
GEN REASON | PENDING CONFIGS | VTLB ID | LB ID |
+-----+-----+-----+-----+-----+-----+-----+-----+
+-----+-----+-----+-----+-----+-----+-----+-----+
| 10.10.10.10  |     | SLX         | 64512 | spine | provisioned  | cfg in-sync |
NA          | NA  |             | NA    | 1    |              |              |
| 10.10.10.20  |     | SLX         | 64512 | spine | provisioned  | cfg in-sync |
NA          | NA  |             | NA    | 1    |              |              |
| 10.10.10.30  |     | SLX         | 64512 | spine | provisioned  | cfg in-sync |
NA          | NA  |             | NA    | 1    |              |              |
| 10.9.9.20    |     | FRE-134     | 65001 | leaf  | provisioned  | cfg in-sync |
NA          | NA  |             | 2     | 1    |              |              |
| 10.9.9.30    |     | FRE-135     | 65001 | leaf  | provisioned  | cfg in-sync |
NA          | NA  |             | 2     | 1    |              |              |
| 10.9.9.40    |     | Orca-74     | 65000 | leaf  | provisioned  | cfg in-sync |
NA          | NA  |             | 2     | 1    |              |              |
| 10.9.9.50    |     | Orca-76     | 65000 | leaf  | provisioned  | cfg in-sync |
NA          | NA  |             | 2     | 1    |              |              |
| 10.9.9.60    |     | Avalanche-11 | 65002 | leaf  | provisioned  | cfg in-sync |
NA          | NA  |             | 2     | 1    |              |              |
| 10.9.9.70    |     | Avalanche-46 | 65002 | leaf  | provisioned  | cfg in-sync |
NA          | NA  |             | 2     | 1    |              |              |
| 10.9.9.80    |     | Orca-78     | 65002 | leaf  | provisioned  | cfg in-sync |
NA          | NA  |             | 2     | 1    |              |              |
| 10.9.9.90    |     | Avalanche-72 | 65002 | leaf  | provisioned  | cfg in-sync |
NA          | NA  |             | 2     | 1    |              |              |
+-----+-----+-----+-----+-----+-----+-----+-----+
+-----+-----+-----+-----+-----+-----+-----+-----+

CONFIG GEN REASON:
LD - Link Delete, LA - Link Add, IU - Interface Update
MD - MCT Delete, OD - Overlay Gateway Delete, OU - Overlay Gateway Update, ED - Evpn
Delete
DD - Dependent Device Update, DA - Device Add, DR - Device ReAdd, ASN - Asn Update, HN -
HostName Update, NA - Not Applicable
```

```
PENDING CONFIGS:
MCT - MCT Cluster, O - Overlay Gateway, SYSP - System Properties, INTIP - Interface IP
C/D/U - Create/Delete/Update, PA/PD - Port Add/Port Delete

For App or Device Error/Failure reason, run "efa fabric error show" for details
For config refresh reason, run "efa fabric debug config-gen-reason" for details

--- Time Elapsed: 6.1824056s ---
```

### Example

This command forces all the devices to be removed and added back to the fabric. This step is necessary to ensure that the overlay and underlay information for the newly added devices are propagated throughout the fabric.

```
$ efa fabric configure --name efa-fabric-1 --force
```

## Create the SCVMM Tenant

### About This Task

Add the SCVMM server to the EFA Hyper-V Service instance. Do the following:

### Procedure

1. Use the `efa tenant create` command to create your tenant entry. When creating your tenant, ensure that you provision adequate number of VLANs that are available for use.
2. Once you have created the new tenant, verify that the devices you added are added to the correct fabric. Use the `efa inventory device list` command to do so.

### Results

This command will create a tenant entry that is used when registering a SCVMM server with EFA.

### Example

This command creates a tenant entry with the name `scvmm-10.24.85.111`.

```
$ efa tenant create --name scvmm-10.24.85.111 --vlan-range 2-4096 --port 10.9.9.20[0/10],
10.9.9.30[0/10]
```

Use this command to verify if the devices that you have added to the fabric are associated with the correct fabric.

```
$ efa inventory device list

root@ubuntu:~# efa inventory device list
+-----+-----+-----+-----+-----+-----+-----+-----+
| IP Address | Host Name | Model | Chassis Name | Firmware | ASN | Role | Fabric |
+-----+-----+-----+-----+-----+-----+-----+-----+
| 10.9.9.20 | FRE-134 | | | | 65001 | leaf | efa-fabric-1 |
| | | | | | | | |
| 10.9.9.30 | FRE-135 | | | | 65001 | leaf | efa-fabric-1 |
```

```
|
+-----+-----+-----+-----+-----+-----+-----+
Device Details
--- Time Elapsed: 32.932576ms ---
```

## Register Microsoft SCVMM Server With EFA

### About This Task

Register the Microsoft SCVMM server with EFA. Do the following:

### Procedure

1. Use the `efa scvmm register` command to register the Microsoft SCVMM server with this EFA instance.  
Before you register the Microsoft SCVMM server, verify that the Microsoft SCVMM entry is created. Use the `efa tenant show` command to do so.
2. Once you have registered your Microsoft SCVMM, verify that the Microsoft SCVMM server was registered successfully and know the status of discovery of Hyper-V hosts managed by it.

### Example

This example shows the use of the `efa tenant show` command to view a list of registered tenants for this instance of the EFA Hyper-V service.

```
$ efa tenant show

+-----+-----+-----+-----+-----+-----+
+-----+
| Name          | L2VNI-Range | L3VNI-Range | VLAN-Range | VRF-Count | Enable-BD |
Ports |
+-----+-----+-----+-----+-----+-----+
+-----+
| scvmm-10.24.85.111 |          |          | 2-4096     | 0         | False
|                  |
+-----+-----+-----+-----+-----+-----+
+-----+
Tenant Details
--- Time Elapsed: 948.4093ms ---
```

Use this command to register a Microsoft SCVMM server with the IP address of 10.24.85.111 as a tenant with this instance of EFA Hyper-V service.

```
$ efa scvmm register --host 10.24.85.111 --username administrator@mshyperv.local --
password 'aBc123#' --tenant scvmm-10.24.85.111

+-----+-----+-----+-----+-----+-----+
| ID | Host Name      | Version   | Discovery Status          | Host Count | VM Count |
+-----+-----+-----+-----+-----+-----+
| 1  | 10.24.85.111  | 4.0.1662.0 | Pending Complete Discovery |            |          |
+-----+-----+-----+-----+-----+-----+
SCVMM Server Details
--- Time Elapsed: 10.0346556s ---
```

Use this command to verify the status of discovery of your newly added Microsoft SCVMM server.

```
$ efa scvmm list

+----+-----+-----+-----+-----+-----+
| ID | Host Name      | Version   | Discovery Status           | Host Count | VM Count |
+----+-----+-----+-----+-----+-----+
| 1  | 10.24.85.111  | 4.0.1662.0 | Pending Complete Discovery |             |          |
+----+-----+-----+-----+-----+-----+
SCVMM Server Details
--- Time Elapsed: 10.0346556s ---
```

This example shows the same Microsoft SCVMM server after the discovery process is complete.

```
$ efa scvmm list

+----+-----+-----+-----+-----+-----+
| ID | Host Name      | Version   | Discovery Status           | Host Count | VM Count |
+----+-----+-----+-----+-----+-----+
| 1  | 10.24.85.111  | 4.0.1662.0 | Completed Discovery       | 4           | 13      |
+----+-----+-----+-----+-----+-----+
SCVMM Server Details
--- Time Elapsed: 1.3625964s ---
```

## Verify Microsoft SCVMM Host Registration

### About This Task

To verify that your Microsoft SCVMM host has been successfully registered and that its data has been synchronized with the local EFA Hyper-V service database:

### Procedure

1. Use the `efa scvmm list` command to view a list of registered Microsoft SCVMM servers. If your Microsoft SCVMM server is successfully registered, it will appear in this list.
2. Changes to the managed Hyper-V hosts or Virtual Machines on the registered Microsoft SCVMM server are periodically updated with the EFA Hyper-V service. Use the `efa scvmm list` command to view these changes. If the changes are not updated, run the `efa scvmm update` command to force an update, followed by the `efa scvmm list` command to view the updated information.



## EFA Hyper-V Service Commands

---

[efa scvmm](#) on page 22

[efa scvmm register](#) on page 23

[efa scvmm delete](#) on page 24

[efa scvmm list](#) on page 25

[efa scvmm update](#) on page 26

[efa scvmm links](#) on page 27

[efa scvmm settings](#) on page 29

## efa scvmm

The base command for all EFA scvmm actions

### Syntax

```
efa scvmm { register | delete | list | update | links | settings }
```

### Command Default

There are no defaults for this command

### Parameters

#### register

Command to register Microsoft SCVMM server with EFA.

#### delete

Command to delete or de-register the specified Microsoft SCVMM server registered with EFA Hyper-V service.

#### list

Command to list all the Microsoft SCVMM servers registered as tenants with EFA HyperV Service.

#### update

Command to update the local EFA database with topology changes on the virtual machines managed by the Microsoft SCVMM tenants.

#### links

Command to list the links on a Microsoft SCVMM server or any Microsoft Hyper-V device that is managed through this tenant. This command can display link information for physical and virtual NICs.

#### settings

Command to configure or view the *Polling Frequency* setting for fetching topology changes from Microsoft SCVMM tenants.

### Examples

This command lists the Microsoft SCVMM servers registered as tenants with this instance of EFA.

```
ubuntu@ubuntu:~$ efa scvmm list

+---+-----+-----+-----+-----+-----+
| ID | Host Name      | Version   | Discovery Status | Host Count | VM Count |
+---+-----+-----+-----+-----+-----+
| 1  | 10.24.85.111  | 4.0.1662.0 | Completed Discovery | 4          | 13       |
+---+-----+-----+-----+-----+-----+
SCVMM Server Details
--- Time Elapsed: 99.048181ms ---
```

## efa scvmm register

---

The command to register Microsoft SCVMM server as a tenant with the EFA instance. Tenant details must be registered before running this command.

### Syntax

```
efa scvmm register --host string --username string --password string --tenant string
```

### Command Default

This command has no defaults.

### Parameters

**--host** *string*

The IP address or hostname of the Microsoft SCVMM server to register as a tenant of EFA.

**--username** *string*

Username to connect to the SCVMM Server.

**--password** *string*

Password to connect to the SCVMM Server.

**--tenant** *string*

Tenant associated with the SCVMM Server host.

### Examples

This example registers a Microsoft SCVMM server as a tenant with EFA Hyper-V service.

```
$ efa scvmm register --host 10.24.85.111 --username administrator@mshyperv.local  
--password 'aBc123#' --tenant tenant-10.24.85.111
```

## efa scvmm delete

---

Deletes the Microsoft SCVMM server registered as a tenant with this EFA instance. When the `--cleanup_epgs` parameter is supplied, deletes the EPGs configured for the Microsoft SCVMM tenant.

### Syntax

```
efa scvmm delete --host string [ --cleanup_epgs ]
```

### Parameters

**--host** *string*

IP address or hostname of the SCVMM server to connect to.

**--cleanup\_epgs**

When included, the EPGs associated with the Microsoft SCVMM Server are deleted. When not included, the EPGs associated with the Microsoft SCVMM Server are not removed when the server is removed.

### Examples

This example deletes the Microsoft SCVMM Server with host IP 10.24.85.111 while retaining the associated tenants and EPGs.

```
$ efa scvmm delete --host 10.24.85.111
```

This example deletes the Microsoft SCVMM Server with host IP 10.24.85.111 and removes the associated tenants and EPGs too.

```
$ efa scvmm delete --host 10.24.85.111 --cleanup_epgs
```



## efa scvmm list

Lists the Microsoft SCVMM servers registered as tenants. If the `--host` parameter is supplied, lists the Microsoft Hyper-V hosts managed by the Microsoft SCVMM server with the specified IP address.

### Syntax

```
efa scvmm list [ --host string ]
```

### Parameters

**--host** *string*

IP address or hostname of the SCVMM server to connect to.

### Examples

This example lists a Microsoft SCVMM Server that has just been added as a tenant with this EFA instance.

```
ubuntu@ubuntu:~$ efa scvmm list

+-----+-----+-----+-----+-----+-----+
| ID | Host Name      | Version   | Discovery Status | Host Count | VM Count |
+-----+-----+-----+-----+-----+-----+
| 1  | 10.24.85.111  | 4.0.1662.0 | Pending Discovery | 4          | 13       |
+-----+-----+-----+-----+-----+-----+
SCVMM Server Details
--- Time Elapsed: 99.048181ms ---
```

This example lists a Microsoft SCVMM Server with its status updated to this EFA instance.

```
ubuntu@ubuntu:~$ efa scvmm list

+-----+-----+-----+-----+-----+-----+
| ID | Host Name      | Version   | Discovery Status | Host Count | VM Count |
+-----+-----+-----+-----+-----+-----+
| 1  | 10.24.85.111  | 4.0.1662.0 | Completed Discovery | 4          | 13       |
+-----+-----+-----+-----+-----+-----+
SCVMM Server Details
--- Time Elapsed: 99.048181ms ---
```

This example lists the Microsoft Hyper-V hosts managed by the Microsoft SCVMM server with IP address 10.24.81.10.

```
$ efa scvmm list --host 10.24.81.10
```

## efa scvmm update

---

Updates the local database with configuration changes made to the Microsoft SCVMM server tenants and the Hyper-V hosts managed by them.

### Syntax

```
efa scvmm update --host string --username string --password string
```

### Command Default

This command has no defaults.

### Parameters

**--host** *string*

IP address or Hostname of the Microsoft SCVMM Server from which the local EFA Hyper-V service database needs to be updated.

**--host** *string*

IP address or hostname of the SCVMM server to connect to.

**--password** *string*

Password to connect to the SCVMM Server.

### Examples

This example updates the local EFA HyperV service database with the latest state of the Microsoft SCVMM Server with the IP address 10.24.85.111.

```
$ efa scvmm update --host 10.24.85.111 --username administrator@mshyperv.local --password 'aBc123#'
```

## efa scvmm links

Displays the links for Microsoft SCVMM tenants and their Microsoft Hyper-V hosts. For Microsoft SCVMM server tenants, only physical links are displayed. For Microsoft Hyper-V hosts, physical and virtual links are displayed.

### Syntax

```
efa scvmm links physical { --host string | --hyperv string }
efa scvmm links virtual --hyperv string
```

### Parameters

#### **physical**

Displays the physical links for the selected device. Device can be a Microsoft SCVMM Server or a Hyper-v Server.

#### **virtual**

Displays the virtual links created on a Microsoft Hyper-V server.

#### **--host** *string*

The IP address or host name of the Microsoft SCVMM Server for which to view the physical links.

#### **--hyperv** *string*

The IP address or host name of the Microsoft Hyper-V host for which to view the physical and virtual links.

### Examples

This example is list of Microsoft Hyper-V device managed by the SCVMM Server with the IP 10.24.85.111.

```
ubuntu@ubuntu:~$ efa scvmm links physical --host 10.24.85.111

Physical Links for SCVMM server 10.24.85.111
+-----+-----+-----+-----+-----+-----+
| SCVMM Server | HyperV Host | PNIC Name | PNIC MAC           | Interface | Device |
+-----+-----+-----+-----+-----+-----+
| 10.24.85.111 | 10.24.81.10 | vmnic3    | 40:f2:e9:bb:4c:83 | Ethernet 0/10 | 10.9.9.20 |
|               |               |           |                   |             |         |
+-----+-----+-----+-----+-----+-----+
| 10.24.85.111 | 10.24.82.20 | vmnic3    | 40:f2:e9:bb:58:b2 | Ethernet 0/10 | 10.9.9.30 |
|               |               |           |                   |             |         |
+-----+-----+-----+-----+-----+-----+

Physical Link Details
--- Time Elapsed: 19.922038ms ---
```

This example is a list of virtual machines and their virtual links on the Hyper-V host with the IP 10.24.81.10.

```
ubuntu@ubuntu:~$ efa scvmm links virtual --hyperv 10.24.81.10
```

```
Virtual Links for Hyper-V host 10.24.81.10
+-----+-----+-----+-----+-----+-----+
+
| HyperV Host | VM Name | VNIC MAC | VSwitch Name | VMNetwork Name | Logical Network Name
|
+-----+-----+-----+-----+-----+-----+
+

Virtual Link Details
--- Time Elapsed: 9.66121ms ---
```

## efa scvmm settings

A set of commands for viewing and configuring EFA Hyper-V settings.

### Syntax

```
efa scvmm settings update --poll-frequency string
efa scvmm settings show
```

### Command Default

This command has no defaults.

### Parameters

#### **update**

Updates the poll frequency value used when polling the Microsoft SCVMM servers registered as tenants of this EFA instance. This is a global value and is applicable to all the SCVMM tenants.

#### **show**

Displays the configured *poll frequency* value for this EFA instance.

**--poll-frequency** *string*

The polling frequency value in hours. Enter a value in the range 1-24 hours.

### Examples

This example configures the *poll frequency* to five (5) hours.

```
ubuntu@ubuntu:~$ efa scvmm settings update --poll-frequency 5
SCVMM service settings updated successfully
--- Time Elapsed: 41.740442ms ---
```

This example shows the current configuration of the *poll frequency* setting.

```
ubuntu@ubuntu:~$ efa scvmm settings show

SCVMM Service Settings
+-----+
| Poll Frequency Hours |
+-----+
| 5 |
+-----+
Setting Details
--- Time Elapsed: 5.942588ms ---
```