



Extreme Fabric Automation vCenter Integration Guide

Version 2.4.0

9036927-00 Rev AA
February 2021



Copyright © 2021 Extreme Networks, Inc. All rights reserved.

Legal Notice

Extreme Networks, Inc. reserves the right to make changes in specifications and other information contained in this document and its website without prior notice. The reader should in all cases consult representatives of Extreme Networks to determine whether any such changes have been made.

The hardware, firmware, software or any specifications described or referred to in this document are subject to change without notice.

Trademarks

Extreme Networks and the Extreme Networks logo are trademarks or registered trademarks of Extreme Networks, Inc. in the United States and/or other countries.

All other names (including any product names) mentioned in this document are the property of their respective owners and may be trademarks or registered trademarks of their respective companies/owners.

For additional information on Extreme Networks trademarks, see: www.extremenetworks.com/company/legal/trademarks

Open Source Declarations

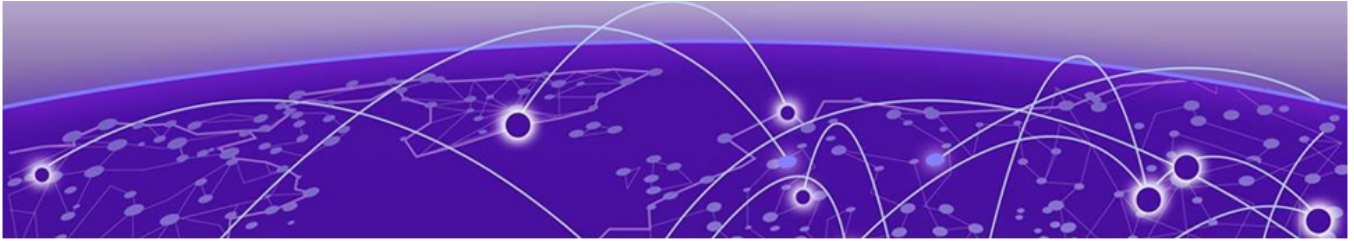
Some software files have been licensed under certain open source or third-party licenses. End-user license agreements and open source declarations can be found at: <https://www.extremenetworks.com/support/policies/open-source-declaration/>



Table of Contents

Preface.....	5
Text Conventions.....	5
Documentation and Training.....	7
Getting Help.....	7
Subscribe to Service Notifications.....	7
Providing Feedback.....	8
About This Document.....	9
What's New in This Document.....	9
Introduction.....	10
Introduction to Extreme Fabric Automation.....	10
EFA Microservices.....	12
Fabric Service.....	12
Tenant Service.....	13
Inventory Service.....	13
Notification Service.....	13
RASlog Service.....	13
Security Service.....	13
SNMP Service.....	13
Ecosystem Integration Services.....	14
VMware vCenter.....	15
VMware vSphere Client.....	15
How the EFA vCenter Service Works	15
Before You Begin.....	17
Limitations of EFA vCenter Service.....	17
Supported Version.....	17
VMware vCenter Configuration.....	17
EFA vCenter Integration.....	18
Integrating EFA vCenter Service	18
Managing VMware vCenter Server Tenants	18
Example Network	18
Verify Fabric Topology.....	19
Add Devices To Your Fabric	20
Create the vCenter Tenant.....	22
Register VMware vCenter Server as a Tenant	22
EFA vCenter Commands.....	25
efa vcenter.....	26
efa vcenter register	27
efa vcenter update.....	28
efa vcenter list.....	29

efa vcenter links.....	30
efa vcenter delete.....	32
efa vcenter debug.....	33



Preface

This section describes the text conventions used in this document, where you can find additional information, and how you can provide feedback to us.

Text Conventions

Unless otherwise noted, information in this document applies to all supported environments for the products in question. Exceptions, like command keywords associated with a specific software version, are identified in the text.

When a feature, function, or operation pertains to a specific hardware product, the product name is used. When features, functions, and operations are the same across an entire product family, such as ExtremeSwitching switches or SLX routers, the product is referred to as *the switch* or *the router*.

Table 1: Notes and warnings




Icon	Notice type	Alerts you to...
	Tip	Helpful tips and notices for using the product.
	Note	Useful information or instructions.
	Important	Important features or instructions.

Table 1: Notes and warnings (continued)



Icon	Notice type	Alerts you to...
	Caution	Risk of personal injury, system damage, or loss of data.
	Warning	Risk of severe personal injury.

Table 2: Text

Convention	Description
screen displays	This typeface indicates command syntax, or represents information as it appears on the screen.
The words <i>enter</i> and <i>type</i>	When you see the word <i>enter</i> in this guide, you must type something, and then press the Return or Enter key. Do not press the Return or Enter key when an instruction simply says <i>type</i> .
Key names	Key names are written in boldface, for example Ctrl or Esc . If you must press two or more keys simultaneously, the key names are linked with a plus sign (+). Example: Press Ctrl+Alt+Del
Words in <i>italicized type</i>	Italics emphasize a point or denote new terms at the place where they are defined in the text. Italics are also used when referring to publication titles.
NEW!	New information. In a PDF, this is searchable text.

Table 3: Command syntax

Convention	Description
bold text	Bold text indicates command names, keywords, and command options.
<i>italic text</i>	Italic text indicates variable content.
[]	Syntax components displayed within square brackets are optional. Default responses to system prompts are enclosed in square brackets.
{ x y z }	A choice of required parameters is enclosed in curly brackets separated by vertical bars. You must select one of the options.
x y	A vertical bar separates mutually exclusive elements.
< >	Nonprinting characters, such as passwords, are enclosed in angle brackets.
...	Repeat the previous element, for example, <i>member</i> [<i>member</i> . . .].
\	In command examples, the backslash indicates a “soft” line break. When a backslash separates two lines of a command input, enter the entire command at the prompt without the backslash.

Documentation and Training

Find Extreme Networks product information at the following locations:

[Current Product Documentation](#)

[Release Notes](#)

[Hardware and software compatibility](#) for Extreme Networks products

[Extreme Optics Compatibility](#)

[Other resources](#) such as white papers, data sheets, and case studies

Extreme Networks offers product training courses, both online and in person, as well as specialized certifications. For details, visit www.extremenetworks.com/education/.

Getting Help

If you require assistance, contact Extreme Networks using one of the following methods:

Extreme Portal

Search the GTAC (Global Technical Assistance Center) knowledge base; manage support cases and service contracts; download software; and obtain product licensing, training, and certifications.

The Hub

A forum for Extreme Networks customers to connect with one another, answer questions, and share ideas and feedback. This community is monitored by Extreme Networks employees, but is not intended to replace specific guidance from GTAC.

Call GTAC

For immediate support: (800) 998 2408 (toll-free in U.S. and Canada) or 1 (408) 579 2826. For the support phone number in your country, visit: www.extremenetworks.com/support/contact

Before contacting Extreme Networks for technical support, have the following information ready:

- Your Extreme Networks service contract number, or serial numbers for all involved Extreme Networks products
- A description of the failure
- A description of any actions already taken to resolve the problem
- A description of your network environment (such as layout, cable type, other relevant environmental information)
- Network load at the time of trouble (if known)
- The device history (for example, if you have returned the device before, or if this is a recurring problem)
- Any related RMA (Return Material Authorization) numbers

Subscribe to Service Notifications

You can subscribe to email notifications for product and software release announcements, Vulnerability Notices, and Service Notifications.

1. Go to www.extremenetworks.com/support/service-notification-form.
2. Complete the form (all fields are required).

3. Select the products for which you would like to receive notifications.

**Note**

You can modify your product selections or unsubscribe at any time.

4. Select **Submit**.

Providing Feedback

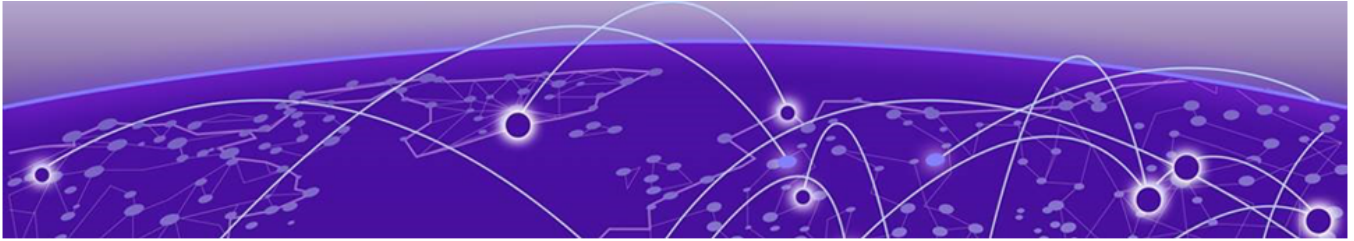
The Information Development team at Extreme Networks has made every effort to ensure the accuracy and completeness of this document. We are always striving to improve our documentation and help you work better, so we want to hear from you. We welcome all feedback, but we especially want to know about:

- Content errors, or confusing or conflicting information.
- Improvements that would help you find relevant information in the document.
- Broken links or usability issues.

If you would like to provide feedback, you can do so in three ways:

- In a web browser, select the feedback icon and complete the online feedback form.
- Access the feedback form at <https://www.extremenetworks.com/documentation-feedback/>.
- Email us at documentation@extremenetworks.com.

Provide the publication title, part number, and as much detail as possible, including the topic heading and page number if applicable, as well as your suggestions for improvement.



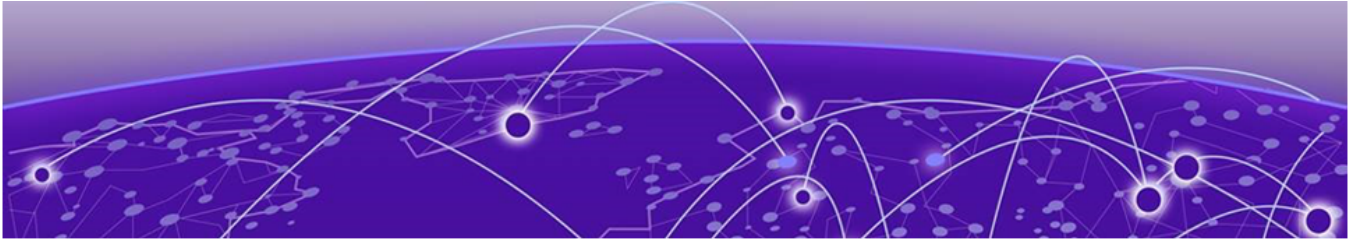
About This Document

[What's New in This Document](#) on page 9

What's New in This Document

There are no content changes for this guide for the Extreme Fabric Automation 2.4.0 software release.

For complete information on this release, refer to the *Extreme Fabric Automation Release Notes*.



Introduction

[Introduction to Extreme Fabric Automation](#) on page 10

[EFA Microservices](#) on page 12

[VMware vCenter](#) on page 15

[VMware vSphere Client](#) on page 15

[How the EFA vCenter Service Works](#) on page 15

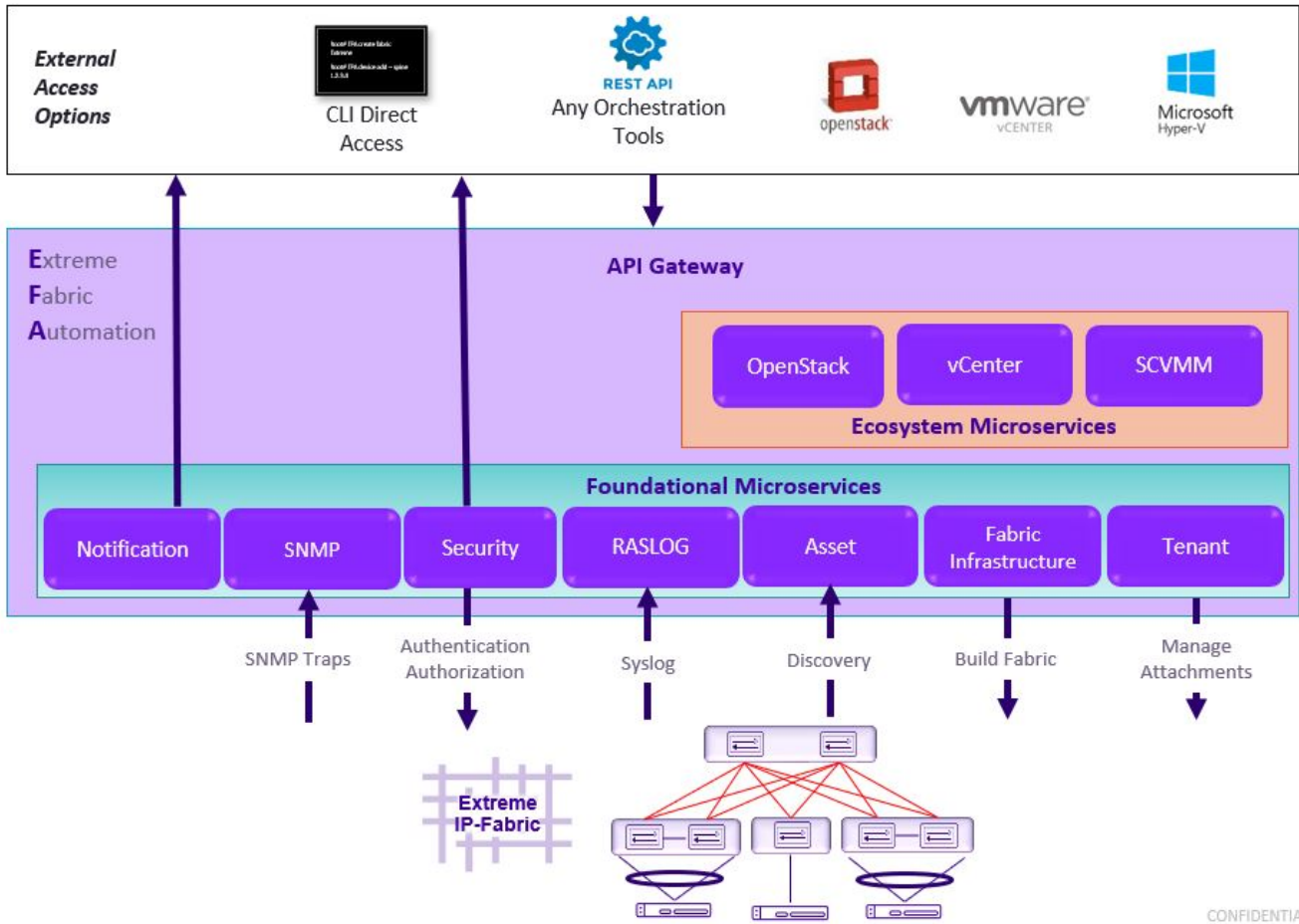
Introduction to Extreme Fabric Automation

Extreme Fabric Automation (EFA) is a micro-services-based scalable fabric automation application.

EFA automates and orchestrates SLX IP fabrics and tenant networks, with support for the following:

- Building and managing non-Clos small data center fabrics and 3-stage and 5-stage IP Clos fabrics
- Managing tenant-aware Layer 2 and Layer 3 networks
- Configuring integration with several ecosystems: VMware vCenter, OpenStack, and Microsoft Hyper-V
- Providing a single point of configuration for your entire fabric

EFA consists of core K3s containerized services that interact with each other and with other infrastructure services to provide the core functions of fabric and tenant network automation. For more information, see [EFA Microservices](#) on page 12.



CONFIDENTIAL

Figure 1: EFA orchestration

EFA Microservices

EFA consists of core K3s containerized microservices that interact with each other and with other infrastructure services to provide the core functions of fabric and tenant network automation.

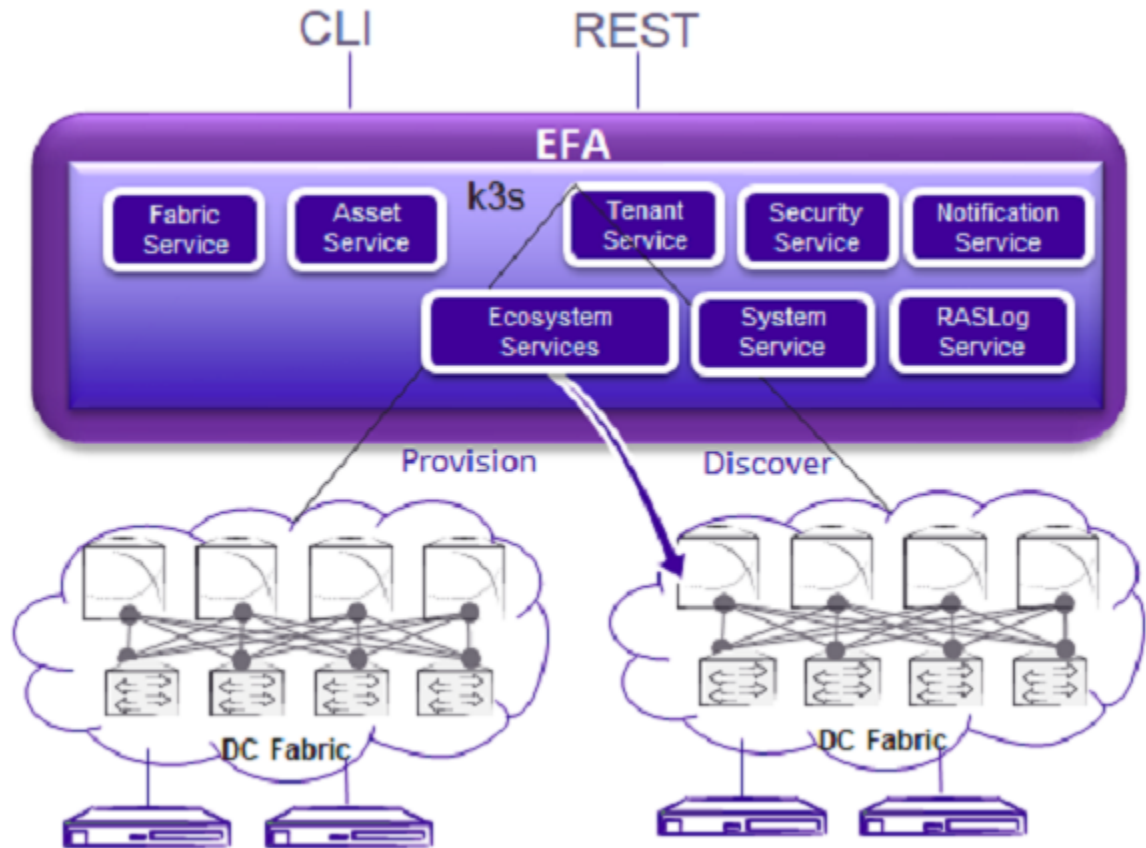


Figure 2: Microservices in the EFA architecture

Fabric Service

The Fabric Service is responsible for automating the fabric BGP underlay and EVPN overlay. By default, the EVPN overlay is enabled but you can disable it before provisioning, if necessary. The Fabric Service exposes the CLI and REST API for automating the fabric underlay and overlay configuration.

The Fabric Service features include:

- Support for small data centers (non-Clos)
- Support for 3-stage and 5-stage Clos fabrics
- Support for MCT configuration

Underlay automation includes interface configurations (IP numbered), BGP underlay for spine and leaf, BFD, and MCT configurations. Overlay automation includes EVPN and overlay gateway configuration.

Tenant Service

The Tenant Service manages tenants, tenant networks, and endpoints, fully leveraging the knowledge of assets and the underlying fabric. You can use the CLI and REST API for tenant network configuration on Clos and non-Clos fabrics.

Tenant network configuration includes VLAN, BD, VE, EVPN, VTEP, VRF, and router BGP configuration on fabric devices to provide Layer 2 extension, Layer 3 extension across the fabric, Layer 2 hand-off, and Layer 3 hand-off at the edge of the fabric.

Inventory Service

The Inventory Service acts as an inventory of all the necessary physical and logical assets of the fabric devices. All other EFA services rely on asset data for their configuration automation. The Inventory Service is a REST layer on top of device inventory details, with the capability to filter data based on certain fields. The Inventory Service securely stores the credentials of devices in encrypted form and makes those credentials available to different components such as the Fabric and Tenant services.

The Inventory Service supports the `execute-cli` option for pushing configuration and exec commands to devices. Examples include configuring SNMP parameters or OSPF configurations. This means you can use EFA for SLX-OS commands and push the same configuration to multiple devices.

The Asset Service provides the secure credential store and deep discovery of physical and logical assets of the managed devices. The service publishes the Asset refresh and change events to other services.

Notification Service

The Notification Service sends events, alerts, and tasks to external entities. Notifications sent from EFA are derived from the syslog events received from the devices that EFA manages. Alerts are notifications that services in EFA send for unexpected conditions. Tasks are user-driven operations or timer-based tasks such as device registration or fabric creation.

RASlog Service

The RASlog Service processes syslog messages from devices and forwards notifications to subscribers. For more information, see [#unique_12](#).

Security Service

The Security Service consists of authentication and authorization features that enforce a security boundary between northbound clients and downstream operations between EFA and SLX devices. The service also validates users and their credentials through Role-based Access Control (RBAC) and supports local and remote (LDAP) login.

SNMP Service

The SNMP Service processes SNMP traps from devices and forwards notifications to subscribers. For more information, see [#unique_13](#).

Ecosystem Integration Services

EFA provides one-touch integration with these ecosystems, providing deep insight into VMs, vSwitches, port groups, and hosts, and the translation of these into IP fabric networking constructs.

VMware vCenter Service

The vCenter integration provides connectivity between EFA and vCenter using a REST API. EFA does not connect to individual ESXi servers. All integration is done through vCenter. For more information, see the [Extreme Fabric Automation VMware vCenter Integration Guide, 2.4.0](#).

Integration support includes the following:

- Registration or deregistration of one or more vCenter servers in EFA
- Updates for vCenter asset details
- Lists of information about vCenter servers
- Inventory integration
- Dynamic updates about Tenant Service integration from vCenter and from EFA services

Hyper-V

The Hyper-V integration supports networking configuration for Hyper-V servers in a datacenter, manual and automated configuration updates when VMs move, and visibility into the VMs and networking resources that are deployed in the Hyper-V setup. For more information, see [Extreme Fabric Automation Hyper-V Integration Guide, 2.4.0](#). Integration support includes the following:

- SCVMM (System Center Virtual Machine Manager) server discovery
- SCVMM server update
- Periodic polling of registered SCVMM servers
- SCVMM server list
- SCVMM server delete and deregister
- Network event handling

OpenStack Service

The OpenStack service integrates Extreme OpenStack plug-ins with the rest of the EFA foundation services in an IP fabric. For more information, see the [Extreme Fabric Automation OpenStack Integration Guide, 2.4.0](#). Integration support includes the following:

- Create, read, update, delete (CRUD) operations on networks and ports
- LAG support
- Provider network (default, PT)
- VLAN trunking
- Network operations using single-root I/O virtualization (SR-IOV), physical and virtual functions
- vMotion (virtual machine migration)
- ML2 driver with support for:
 - Network and segment provisioning for non-default physnets
 - DC-owner-based I2 extension for DC gateway
- Topology changes for port-based extension of DC gateway addition and deletion of topology entries and its changes on EFA EPGs
- Single-homed connections to the edge port
- Multi-segment support
- Journaling support for L2 and L3

- L3 service plugin:
 - Routing feature support using VRF
 - Flavor (service provider) support
 - Centralized routing
 - IPv6 support (dual stack)
- Layer 3 flavors
- Neighbor Discovery and Router Advertisement support:
 - IPv6 ND MTU support
 - IPv6 No-Autoconfig support

VMware vCenter

VMware's *vCenter* server software enables you to administer and manage your virtual machines and physical servers running VMware's ESXi OS from a single location. ESXi is a type-1 hypervisor that enables you to deploy and manage virtual machines.

The vCenter software reduces management complexity and time taken to manage complex deployments and reduces day-to-day tasks of managing a large deployment. vCenter Server software enables dynamic provisioning new services, balancing resources and automating high availability of your resources.

VMware vSphere Client

VMware *vSphere* client is a software that is used to manage VMware's *vCenter* servers. It provides a graphical user interface that enables you to quickly control and manage all virtual machines hosted on your vCenter devices.

How the EFA vCenter Service Works

Use the Extreme Fabric Automation (EFA) application to automate the configuration of the data center's physical network hardware once you have finished configuring your VMware vCenter Server and the associated virtual machines. EFA then imports VMware's infrastructure and topology information and then applies this to the fabric managed by it.

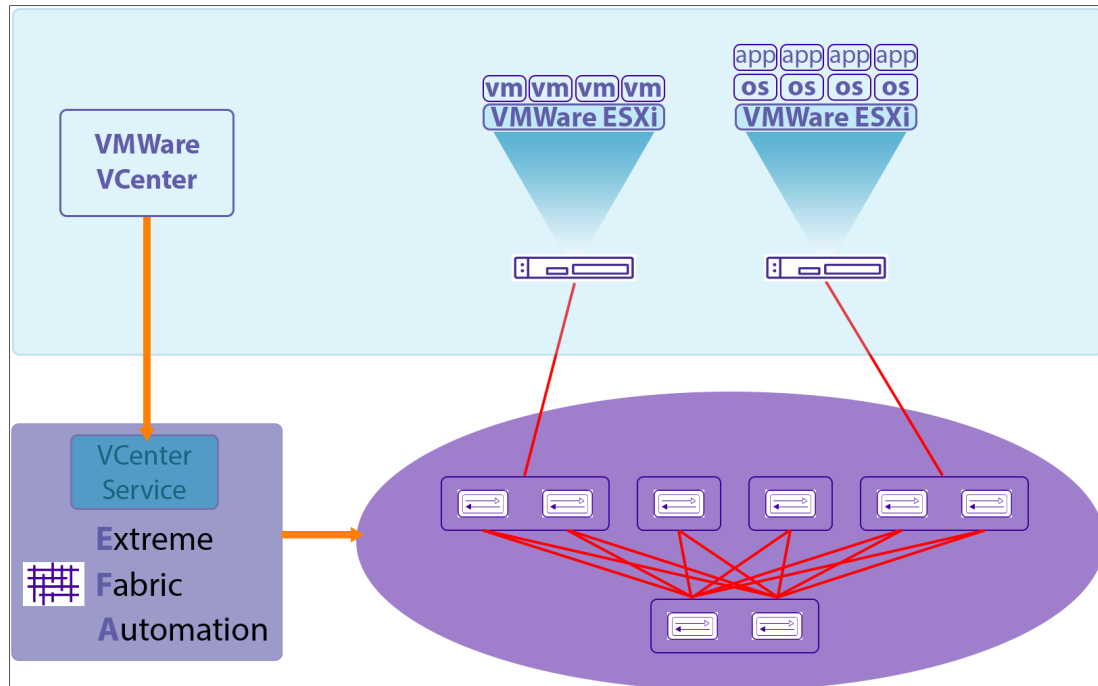


Figure 3: vCenter Service Overview

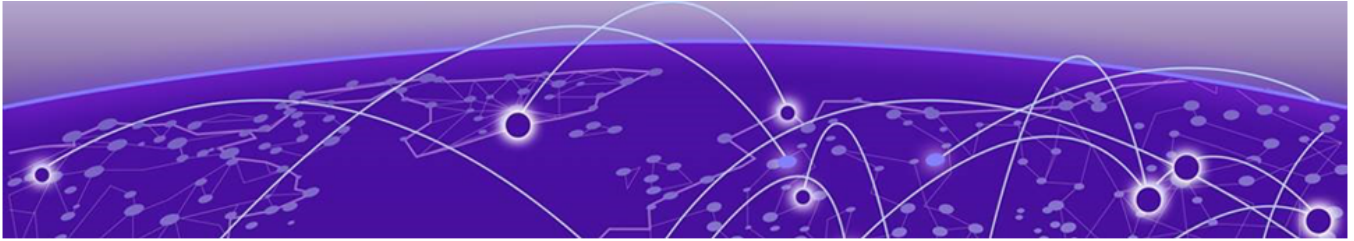
EFA requires that the physical connection between the VMware ESXi servers and Extreme Fabric devices is working and is configured properly. You should also ensure that the EFA server can access the vCenter Server. The EFA server need not be connected to the individual ESXi servers for this service to work.

Once properly configured, the EFA vCenter service queries the VMware vCenter server to:

- Discover network assets and configurations for the specific VMware vCenter server that will be used.
- Discover the ESXi servers that the specific VMware vCenter server manages. It also discovers the virtual machines and virtual network adapters that are configured on each physical ESXi server.

Discover the physical network adapters that are associated with the virtual machines discovered as mentioned above. All the above information are saved in a local database for use. This stored information is used to verify if there are any changes in the networking assets/configurations for the specified VMware vCenter server.

- Interact with EFA's Inventory service to inquire and find the connections between the physical network adapters and the ESXi servers. It also constantly interacts with the Inventory service to find the port information for any new connections with the ESXi servers.
- Interact with EFA's Tenant Service to create the required tenants and End Point Groups. It also uses the Tenant Service to periodically update the tenants and EPG information to ensure that the information stored locally is in-sync with the actual network topology.



Before You Begin

[Limitations of EFA vCenter Service on page 17](#)
[VMware vCenter Configuration on page 17](#)

Limitations of EFA vCenter Service

EFA vCenter Service has the following limitations and restrictions:

- VMware vCenter Server version 6.5 and 6.7 (all releases) are supported. EFA vCenter Service will work with other version than those listed above. However, EFA does not provide support for issues that arise with the use of any versions than listed above.
- EFA requires the open standards LLDP protocol to be enabled under Distributed vSwitch (vDS) to verify the ESXi host topology. The Distributed vSwitch must be configured as "Both" under vDS Discovery Protocol settings so that it can both transmit and receive LLDP messages.
- Currently, ESXi hosts allow LLDP configuration only for the Distributed vSwitch and not the Standard vSwitch. This limitation prevents EFA vCenter Integration from supporting Standard vSwitch deployments.
- EFA does not manage VMware licenses. Users are responsible for VMware vMotion, ESXi, and vCenter licenses.
- EFA cannot detect and fix vCenter connection issues.

Supported Version

EFA vCenter Service supports all platforms and SLX-OS versions.

VMware vCenter Configuration

No configuration changes are required on the VMware vCenter Server.



EFA vCenter Integration

[Integrating EFA vCenter Service on page 18](#)

[Verify Fabric Topology on page 19](#)

[Add Devices To Your Fabric on page 20](#)

[Create the vCenter Tenant on page 22](#)

[Register VMware vCenter Server as a Tenant on page 22](#)

Integrating EFA vCenter Service

To integrate your VMware vCenter server with your EFA vCenter service, you need to do the following:

1. Create or modify your fabric as required.
2. Create or modify your tenant information as required.
3. Register your new VMware vCenter Server as a tenant of the fabric.
4. Verify your integration.

Managing VMware vCenter Server Tenants

The primary tasks of managing your existing VMware vCenter servers as tenants would be to update them periodically or when you add new devices to them. Another task would be to delete these servers when not required.

Example Network

The following network diagram will be used throughout this section to explain the various configurations.

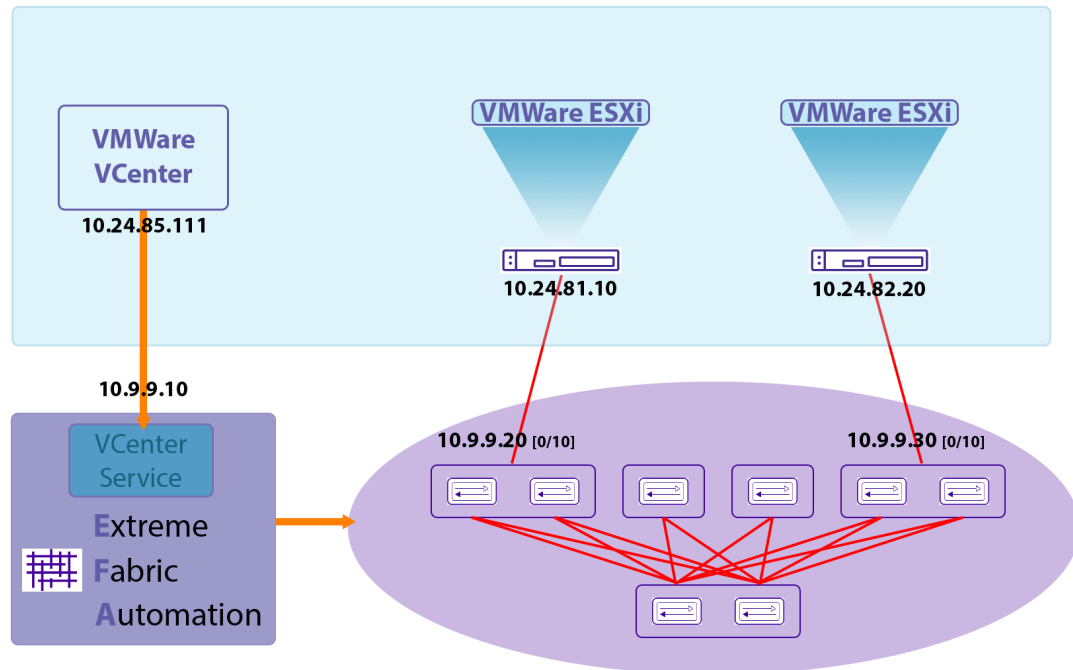


Figure 4: Sample Network Diagram

This table lists the devices, their IP/Port information, and their role within the example network.

IP Address & Port	Device & Role
10.24.85.111	VMWare vCenter Server
10.24.81.10	ESXi Server #1
10.24.82.20	ESXi Server #2
10.9.9.10	EFA Server
10.9.9.20 [0/10]	Fabric Leaf Node #1. This node is connected to the ESXi server with IP address 10.24.81.10 on port 10.
10.9.9.30 [0/10]	Fabric Leaf Node #2. This node is connected to the ESXi server with IP address 10.24.82.20 on port 10.

Verify Fabric Topology

Verify that the fabric devices that you wish to add are present in your fabric, and when verified, fetch additional information for each of these devices.

Execute the `efa fabric show` command.

```
efa fabric show
```

The command returns information for all the spine and leaf devices in your fabric.

The following example lists the devices that make up your fabric.

```

$ efa fabric show

Fabric Name: efa-fabric-1, Fabric Description: Fabric #1, Fabric Stage: 3, Fabric Type:
clos
+-----+-----+-----+-----+-----+-----+-----+
+-----+-----+-----+-----+-----+
| IP ADDRESS | POD | HOST NAME | ASN | ROLE | DEVICE STATE | APP STATE | CONFIG
GEN REASON | PENDING CONFIGS | VTLB ID | LB ID |
+-----+-----+-----+-----+-----+-----+-----+
| 10.10.10.10 |   | SLX       | 64512 | spine | provisioned | cfg in-sync |
NA          | NA |          | NA    | 1    |             |              |
| 10.10.10.20 |   | SLX       | 64512 | spine | provisioned | cfg in-sync |
NA          | NA |          | NA    | 1    |             |              |
| 10.9.9.20    |   | FRE-134   | 65001 | leaf  | provisioned | cfg in-sync |
NA          | NA |          | 2     | 1    |             |              |
| 10.9.9.30    |   | FRE-135   | 65001 | leaf  | provisioned | cfg in-sync |
NA          | NA |          | 2     | 1    |             |              |
| 10.9.9.40    |   | Orca-74   | 65000 | leaf  | provisioned | cfg in-sync |
NA          | NA |          | 2     | 1    |             |              |
| 10.9.9.50    |   | Orca-76   | 65000 | leaf  | provisioned | cfg in-sync |
NA          | NA |          | 2     | 1    |             |              |
| 10.9.9.60    |   | Avalanche-11 | 65002 | leaf  | provisioned | cfg in-sync |
NA          | NA |          | 2     | 1    |             |              |
| 10.9.9.70    |   | Avalanche-46 | 65002 | leaf  | provisioned | cfg in-sync |
NA          | NA |          | 2     | 1    |             |              |
+-----+-----+-----+-----+-----+-----+
+-----+-----+-----+-----+-----+

CONFIG GEN REASON:
LD - Link Delete, LA - Link Add, IU - Interface Update
MD - MCT Delete, OD - Overlay Gateway Delete, OU - Overlay Gateway Update, ED - Evpn
Delete
DD - Dependent Device Update, DA - Device Add, DR - Device ReAdd, ASN - Asn Update, HN -
HostName Update, NA - Not Applicable

PENDING CONFIGS:
MCT - MCT Cluster, O - Overlay Gateway, SYSP - System Properties, INTIP - Interface IP
C/D/U - Create/Delete/Update, PA/PD - Port Add/Port Delete

For App or Device Error/Failure reason, run "efa fabric error show" for details
For config refresh reason, run "efa fabric debug config-gen-reason" for details

--- Time Elapsed: 6.1824056s ---

```

If needed, create a new fabric and/or add new devices to an existing fabric.

Add Devices To Your Fabric

Add devices to a new fabric or to an existing fabric. Do the following:

1. Use the `efa fabric device add` command to add a single device. To add multiple devices in a single command, use the `add-bulk` option instead.

```

efa fabric device add
efa fabric device add-bulk

```

2. Use the `efa fabric configure` command with the `--force` option to force the fabric to update itself by removing and adding all devices that make up the fabric. When the fabric comes up again, it will include the newly added devices.

The following command adds two leaf devices and a spine device to an existing fabric.

```
$ efa fabric device add-bulk --name efa-fabric-1 --leaf 10.9.9.80,10.9.9.90 --spine
10.10.10.30 --username administrator@mshyperv.local --password 'aBc123#'

$ efa fabric show

Fabric Name: efa-fabric-1, Fabric Description: Fabric #1, Fabric Stage: 3, Fabric Type:
clos
+-----+-----+-----+-----+-----+-----+-----+
+-----+-----+-----+-----+-----+
| IP ADDRESS | POD | HOST NAME | ASN | ROLE | DEVICE STATE | APP STATE | CONFIG
GEN REASON | PENDING CONFIGS | VTLB ID | LB ID |
+-----+-----+-----+-----+-----+-----+-----+
| 10.10.10.10 | | SLX | 64512 | spine | provisioned | cfg in-sync |
NA | NA | | NA | 1 | |
| 10.10.10.20 | | SLX | 64512 | spine | provisioned | cfg in-sync |
NA | NA | | NA | 1 | |
| 10.10.10.30 | | SLX | 64512 | spine | provisioned | cfg in-sync |
NA | NA | | NA | 1 | |
| 10.9.9.20 | | FRE-134 | 65001 | leaf | provisioned | cfg in-sync |
NA | NA | | 2 | 1 | |
| 10.9.9.30 | | FRE-135 | 65001 | leaf | provisioned | cfg in-sync |
NA | NA | | 2 | 1 | |
| 10.9.9.40 | | Orca-74 | 65000 | leaf | provisioned | cfg in-sync |
NA | NA | | 2 | 1 | |
| 10.9.9.50 | | Orca-76 | 65000 | leaf | provisioned | cfg in-sync |
NA | NA | | 2 | 1 | |
| 10.9.9.60 | | Avalanche-11 | 65002 | leaf | provisioned | cfg in-sync |
NA | NA | | 2 | 1 | |
| 10.9.9.70 | | Avalanche-46 | 65002 | leaf | provisioned | cfg in-sync |
NA | NA | | 2 | 1 | |
| 10.9.9.80 | | Orca-78 | 65002 | leaf | provisioned | cfg in-sync |
NA | NA | | 2 | 1 | |
| 10.9.9.90 | | Avalanche-72 | 65002 | leaf | provisioned | cfg in-sync |
NA | NA | | 2 | 1 | |
+-----+-----+-----+-----+-----+-----+-----+
+-----+-----+-----+-----+-----+

CONFIG GEN REASON:
LD - Link Delete, LA - Link Add, IU - Interface Update
MD - MCT Delete, OD - Overlay Gateway Delete, OU - Overlay Gateway Update, ED - Evpn
Delete
DD - Dependent Device Update, DA - Device Add, DR - Device ReAdd, ASN - Asn Update, HN -
HostName Update, NA - Not Applicable

PENDING CONFIGS:
MCT - MCT Cluster, O - Overlay Gateway, SYSP - System Properties, INTIP - Interface IP
C/D/U - Create/Delete/Update, PA/PD - Port Add/Port Delete

For App or Device Error/Failure reason, run "efa fabric error show" for details
For config refresh reason, run "efa fabric debug config-gen-reason" for details

--- Time Elapsed: 6.1824056s ---
```

This command forces all the devices to be removed and added back to the fabric. This step is necessary to ensure that the overlay and underlay information for the newly added devices are propagated throughout the fabric.

```
$ efa fabric configure --name efa-fabric-1 --force
```

Create the vCenter Tenant

Add the VMware vCenter Server to the EFA vCenter Service instance. Do the following:

1. Use the `efa tenant create` command to create your tenant entry. When creating your tenant, ensure that you provision adequate number of VLANs that are available for use.
2. Once you have created the new tenant, verify that the devices you added are added to the correct fabric. Use the `efa inventory device list` command to do so.

This command will create a tenant entry that is used when registering a VMware vCenter Server with EFA.

This command creates a tenant entry with the name `vcenter-10.24.85.111`.

```
$ efa tenant create --name vcenter-10.24.85.111 --vlan-range 2-4096 --port
10.9.9.20[0/10],10.9.9.30[0/10]
```

Use this command to verify if the devices that you have added to the fabric are associated with the correct fabric.

```
$ efa inventory device list
```

```
root@ubuntu:~# efa inventory device list
+-----+-----+-----+-----+-----+-----+-----+-----+
| IP Address | Host Name | Model | Chassis Name | Firmware | ASN | Role | Fabric |
+-----+-----+-----+-----+-----+-----+-----+-----+
| 10.9.9.20 | FRE-134 | | | | 65001 | leaf | efa-fabric-1 |
| 10.9.9.30 | FRE-135 | | | | 65001 | leaf | efa-fabric-1 |
+-----+-----+-----+-----+-----+-----+-----+-----+
Device Details
--- Time Elapsed: 32.932576ms ---
```

Register VMware vCenter Server as a Tenant

Register the VMware vCenter server as a tenant of EFA. Do the following:

1. Use the `efa vcenter register` command to register the VMware vCenter server as a tenant with this EFA instance.
Before you register the VMware vCenter server, verify that the tenant is created. Use the `efa tenant show` command to do so.
2. Once you have registered your VMWare vCenter server as a tenant, verify that the VMware vCenter server was registered successfully and know the status of discovery of ESXi hosts managed by it.

This example shows the use of the `efa tenant show` command to view a list of registered tenants for this instance of the EFA vCenter service.

```
$ efa tenant show
+-----+-----+-----+-----+-----+-----+-----+-----+
+-----+
| Name | L2VNI-Range | L3VNI-Range | VLAN-Range | VRF-Count | Enable-BD |
```

```

Ports |
+-----+-----+-----+-----+-----+
+-----+
| vcenter-10.24.85.111 | | | 2-4096 | 0 | False
| |
+-----+-----+-----+-----+-----+
+-----+
Tenant Details
--- Time Elapsed: 948.4093ms ---

```

Use this command to register a VMware vCenter server with the IP address of 10.24.85.111 as a tenant with this instance of EFA vCenter service.

```

$ efa vcenter register --host 10.24.85.111 --username administrator@vmvcenter.local --
password 'aBc123#' --tenant vcenter-10.24.85.111
+-----+-----+-----+-----+-----+
| Host Name      | Name                | Version | Discovery Status |
+-----+-----+-----+-----+-----+
| 10.24.85.111 | VMware vCenter Server | 6.7.0  | Pending Complete Discovery |
+-----+-----+-----+-----+-----+
VCenter Details
--- Time Elapsed: 10.0346556s ---

```

Use this command to verify the status of discovery of your newly added VMware vCenter server.

```

$ efa vcenter list
+-----+-----+-----+-----+-----+
+-----+-----+-----+-----+
Status      | Host Name      | Name                | Version | Discovery
| Datacenters Count | Host Count | VM Count |
+-----+-----+-----+-----+-----+
| 10.24.85.111 | VMware vCenter Server | 6.7.0  | Pending Complete Discovery |
| 1             | 1               | 0      |
+-----+-----+-----+-----+-----+
VCenter Details
--- Time Elapsed: 1.0318464s ---

```

This example shows the same VMware vCenter server after the `vcenter update` process is complete.

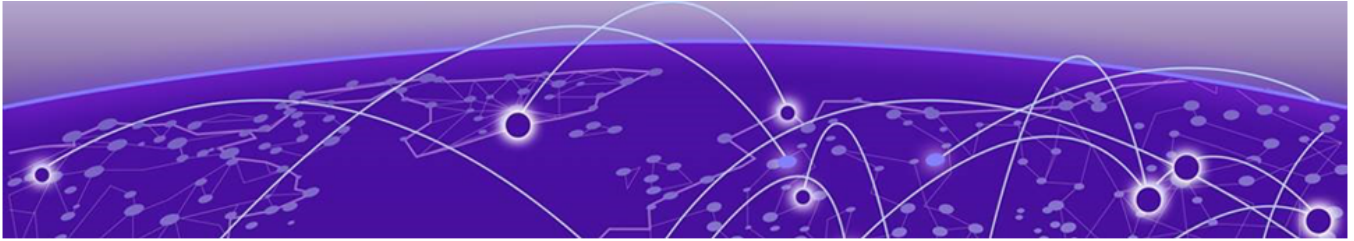
```

$ efa vcenter list
+-----+-----+-----+-----+-----+
+-----+-----+-----+-----+
| Host Name      | Name                | Version | Discovery Status | Datacenters Count |
Host Count | VM Count |
+-----+-----+-----+-----+-----+
| 10.24.85.111 | VMware vCenter Server | 6.7.0  | Update Completed | 5
| 4             | 13               |
+-----+-----+-----+-----+-----+
VCenter Details
--- Time Elapsed: 1.3625964s ---

```

This example shows a VMware vCenter server after the `register` and background discovery process is completed.

```
$ efa vcenter list
+-----+-----+-----+-----+
+-----+-----+-----+-----+
| Host Name      | Name                | Version | Discovery Status | Datacenters
Count | Host Count | VM Count |
+-----+-----+-----+-----+
+-----+-----+-----+-----+
| 10.24.85.111  | VMware vCenter Server | 6.7.0   | Completed Discovery |
5      | 4          | 11      |
+-----+-----+-----+-----+
+-----+-----+-----+-----+
vCenter Details
--- Time Elapsed: 197.886032ms ---
```

EFA vCenter Commands

- [efa vcenter](#) on page 26
- [efa vcenter register](#) on page 27
- [efa vcenter update](#) on page 28
- [efa vcenter list](#) on page 29
- [efa vcenter links](#) on page 30
- [efa vcenter delete](#) on page 32
- [efa vcenter debug](#) on page 33

efa vcenter

The base command for all EFA vCenter actions.

Syntax

```
efa vcenter { register | update | list | delete | links | debug }
```

Command Default

There are no defaults for this command

Parameters

register

Command to register VMware vCenter server as a tenant.

update

Command to update the local EFA database with topology changes on the virtual machines managed by the VMware vCenter server.

list

Command to list all the VMware vCenter servers registered as tenants with EFA vCenter service.

delete

Command to delete specific VMware vCenter server registered as a tenant with EFA vCenter service.

links

Command to list the links on a VMware vCenter server or any ESCi device that is managed through this tenant. This command can display link information for physical and virtual NICs and also those NICs that are not connected/used.

debug

Command to debug any issue with respect to this vCenter tenant.

Examples

This command lists the registered VMware vCenter servers registered as tenants with this instance of EFA.

```
$ efa vcenter list
+-----+-----+-----+-----+-----+
+-----+-----+-----+-----+
| Host Name      | Name                | Version | Discovery Status      |
Datacenters Count | Host Count | VM Count |
+-----+-----+-----+-----+
+-----+-----+-----+-----+
| 10.24.85.166  | VMware vCenter Server | 6.7.0   | Pending Complete Discovery |
1                | 1                | 0        |
+-----+-----+-----+-----+
+-----+-----+-----+-----+
```

efa vcenter register

The command to register VMware vCenter server as a tenant with the EFA instance. Tenant details must be registered before running this command.

Syntax

```
efa vcenter register --host string --username string --password string  
--tenant string
```

Command Default

This command has no defaults.

Parameters

--host *string*

IP address or hostname of the VMware vCenter Server to connect to.

--username *string*

Username to connect to the VMware vCenter Server.

--password *string*

Password to connect to the VMware vCenter Server.

--tenant *string*

Tenant associated with the VMware vCenter Server host.

Examples

This example registers a VMware vCenter Server as a tenant with EFA vCenter service.

```
$ efa vcenter register --host 10.24.85.111 --username administrator@vmvcenter.local  
--password 'aBc123#' --tenant tenant-10.24.85.111
```

efa vcenter update

Updates the local database with configuration changes made to the VMware vCenter Server and the ESXi servers managed by it.

Syntax

```
efa vcenter update --host string --username string --password string
```

Command Default

This command has no defaults.

Parameters

--host *string*

IP address or Hostname of the VMware vCenter Server from which the local EFA vCenter service database needs to be updated.

--username *string*

Username to connect to the VMware vCenter Server.

--password *string*

Password to connect to the VMware vCenter Server.

Examples

This example updates the local EFA vCenter service database with the latest state of the VMware vCenter Server with the IP address 10.24.85.111.

```
$ efa vcenter update --host 10.24.85.111 --username administrator@vmvcenter.local --password 'aBc123#'
```

efa vcenter list

Lists the VMware vCenter servers registered as tenants. When the `--host` parameter is supplied, lists the ESXi hosts for that VMware vCenter Server.

Syntax

```
efa vcenter list [ --host string ]
```

Parameters

--host *string*

IP address or hostname of the VMware vCenter Server to connect to.

Examples

This example lists a VMware vCenter Server that has just been added as a tenant with this EFA instance.

```
$ efa vcenter list
+-----+-----+-----+-----+-----+
+-----+-----+-----+-----+
| Host Name      | Name                               | Version | Discovery Status           |
Datacenters Count | Host Count | VM Count |
+-----+-----+-----+-----+
+-----+-----+-----+-----+
| 10.24.85.111 | VMware vCenter Server | 6.7.0   | Pending Complete Discovery |
1              | 1              | 0       |
+-----+-----+-----+-----+
+-----+-----+-----+-----+
```

This example lists a VMware vCenter Server with its status updated to this EFA instance.

```
$ efa vcenter list
+-----+-----+-----+-----+-----+
+-----+-----+
| Host Name      | Name                               | Version | Discovery Status | Datacenters Count |
Host Count | VM Count |
+-----+-----+-----+-----+-----+
+-----+-----+
| 10.24.85.111 | VMware vCenter Server | 6.7.0   | Update Completed | 5
4              | 13              |
+-----+-----+-----+-----+-----+
+-----+-----+-----+-----+
```

This example lists the ESXi devices managed by the VMware vCenter Server with IP address 10.24.85.111.

```
$ efa vcenter list --host 10.24.85.111
```

efa vcenter links

Displays the links for VMware vCenter server tenants and their ESXi hosts. For VMware vCenter server tenants, physical and unconnected links are displayed. For ESXi hosts, physical, unconnected, and virtual links are displayed.

Syntax

```
efa vcenter links { physical | unconnected } { --host string | --esxi string }
```

```
efa vcenter links virtual --esxi string
```

Parameters

physical

Displays the physical links for the selected device. Device can be a VMware vCenter Server or an ESXi server.

unconnected

Displays the unconnected (unused) links for the selected device. Device can be a VMware vCenter Server or an ESXi server.

virtual

Displays the virtual links created on a ESXi server.

--host

The IP address or host name of the VMware vCenter Server for which to view the physical and unconnected (unused) links.

--esxi

The IP address or host name of the ESXi tenant for which to view the physical, virtual, and unconnected (unused) links.

Examples

This example is list of ESXi device managed by the VMware vCenter Server with the IP 10.24.85.111.

```
$ efa vcenter links physical --host 10.24.85.111
Physical Links for vCenter 10.24.85.111
+-----+-----+-----+-----+-----+-----+-----+
+-----+-----+-----+-----+-----+-----+-----+
| ESXi Host   | PNIC   | Driver | PNIC MAC           | Interface   | PO Number | PO
Name | Device           | Missing | Missing Time |              |           |
+-----+-----+-----+-----+-----+-----+-----+
+-----+-----+-----+-----+-----+-----+-----+
| 10.24.81.10 | vmnic3 | ntg3   | 40:f2:e9:bb:4c:83 | Ethernet 0/10 |
|             | 10.9.9.20 |       |                   |                 |           |
+-----+-----+-----+-----+-----+-----+-----+
+-----+-----+-----+-----+-----+-----+-----+
| 10.24.82.20 | vmnic2 | ntg3   | 40:f2:e9:bb:58:b2 | Ethernet 0/10 |
|             | 10.9.9.30 |       |                   |                 |           |
+-----+-----+-----+-----+-----+-----+-----+
+-----+-----+-----+-----+-----+-----+-----+
```

```

| 10.24.83.30 | vmnic3 | ntg3 | 40:f2:e9:bb:58:b3 | Ethernet 0/10 |
|           | 10.9.9.40 |           |           |           |
+-----+-----+-----+-----+-----+
Physical Link Details
--- Time Elapsed: 359.1528ms ---

```

This example is a list of virtual machines and their virtual links on the ESXi host with the IP 10.24.81.10.

```

$ efa vcenter links virtual --esxi 10.24.81.10
Virtual Links for ESXi server 10.24.81.10
+-----+-----+-----+-----+-----+
| Virtual Machine | vNIC          | MAC          | VLAN | Port Group |
vSwitch          | Distributed   |              |      |            |
+-----+-----+-----+-----+-----+
| 20200221 v1     | Network adapter 1 | 00:50:56:9c:75:29 | 3048 | VM Network |
vSwitch0         | false         |              |      |            |
+-----+-----+-----+-----+-----+
| test_vm2       | Network adapter 2 | 00:50:56:9c:7e:83 | 3048 | VM Network |
vSwitch0         | false         |              |      |            |
+-----+-----+-----+-----+-----+
| 20200221 v1     | Network adapter 2 | 00:50:56:9c:f6:13 | 3048 | VM Network |
vSwitch0         | false         |              |      |            |
+-----+-----+-----+-----+-----+
| vMotionVm      | Network adapter 1 | 00:50:56:9c:8f:fd | 10   | DPortGroup | Real-DV-
Switch | true         |              |      |            |
+-----+-----+-----+-----+-----+
| test_vm2       | Network adapter 1 | 00:50:56:9c:1d:09 | 10   | DPortGroup | Real-DV-
Switch | true         |              |      |            |
+-----+-----+-----+-----+-----+
vNIC Link Details
--- Time Elapsed: 500.4792ms ---

```

efa vcenter delete

Deletes the VMware vCenter Server registered as a tenant with this EFA instance. When the `--cleanup-tenants` parameter is supplied, removes the registered ESXi hosts and EPGs for this VMware vCenter Server tenant.

Syntax

```
efa vcenter delete --host string [ --cleanup-tenants ]
```

Parameters

--host *string*

IP address or hostname of the VMware vCenter Server tenant to delete.

--cleanup-tenants

When included, the tenants and EPGs associated to the VMware vCenter Server are deleted. When not included, the tenants and EPGs associated with the VMware vCenter Server are retained when the server is removed.

Examples

This example deletes the VMware vCenter Server with host IP 10.24.85.111 while retaining the associated tenants and EPGs.

```
$ efa vcenter delete --host 10.24.85.111
```

This example deletes the VMware vCenter Server with host IP 10.24.85.111 and removes the associated tenants and EPGs.

```
$ efa vcenter delete --host 10.24.85.111 --cleanup-tenants
```


efa vcenter debug

A set of debug commands for troubleshooting EFA vCenter issues. This command also sets configuration parameters for vCenter tenants.

Syntax

```
efa vcenter debug tenant show --host string  
efa vcenter debug event show --host string { --page int32 | --page-size int32 }  
efa vcenter debug setting show  
efa vcenter debug setting update { --poll-requency string | --dead-link-clearing-time string }  
efa vcenter debug set --level { info | debug }
```

Command Default

This command has no defaults.

Parameters

tenant show

Shows a list of tenants for a particular VMware vCenter Server host.

event show

Shows a list of events recorded for a particular VMware vCenter Server host.

setting show

Shows the different settings configured on the VMware vCenter Server host. These settings are global in nature and are applicable to all VMware vCenter Server hosts registered with this EFA vCenter Service instance.

setting update

Updates the different settings for the added VMware vCenter Server hosts registered with this EFA vCenter Service instance. These settings are applicable to all the VMware vCenter Server hosts.

set

Sets the debug level for this instance of EFA vCenter service. Debug levels can be set to receiving information level messages or complete debugging messages.

--host *string*

IP address or hostname of the VMware vCenter Server to connect to.

--page *int32*

Events are fetched for the page number specified in this parameter. When this parameter is not passed, page number 1 is always fetched by default.

--page-size *int32*

The number of events to display per page. When this parameter is not passed, twenty (20) records are shown per page.

--poll-requency *string*

The poll duration in hours. The EFA vCenter Service polls all the VMware vCenter Servers registered with it after this time duration has expired.

--dead-link-clearing-time *string*

The time duration in days. This is the time duration for which dead links are removed from the EFA vCenter service database.

--level { *info* | *debug* }

Sets the debug level for this EFA vCenter Service instance. Can be one of *info* or *debug*. Use *info* to view only messages of the level *info*. Use *debug* to view all debug messages.

Examples

The following example shows the debug information for tenant creation failure for a VMware vCenter Server with IP 10.24.85.111. It also displays other errors if they have been reported.

```
$ efa vcenter debug tenant --host 10.24.85.111
Tenant Configuration Details for vCenter 10.24.85.111
+-----+-----+-----+-----+
+-----+-----+-----+-----+
| Tenant Name          | Ports | VLANs | Status          |
Reason                |
+-----+-----+-----+-----+
+-----+-----+-----+-----+
| vcenter-10.24.85.111 |      | 2-4089 | Creation Failed | Tenant vcenter-10.24.85.111
is missing the
|
| 10.25.225.46="ethernet-0/5"
|
| 10.24.81.10="ethernet-0/10"
|
| 10.25.225.11="ethernet-0/5"
|
+-----+-----+-----+-----+
+-----+-----+-----+-----+
Tenant Details

EPG Configuration Details for vCenter 10.24.85.111
+-----+-----+-----+-----+
+-----+-----+-----+-----+
| EPG Name                | Ports | POs |
Switchport Mode | VLANs | Status          |
Reason                |
+-----+-----+-----+-----+
+-----+-----+-----+-----+
| vCenter_10.24.85.111_10.24.82.20_vSwitch1_VMNetwork2 | 10.24.82.20[0/11] |
trunk          | 101   | Creation Failed | EPG cannot be created for a tenant having no
ports |
+-----+-----+-----+-----+
+-----+-----+-----+-----+
Endpoint Group Details
```

```
--- Time Elapsed: 381.0047ms ---
```

This example shows the output for the `efa vcenter debug setting show` command.

```
$ efa vcenter debug setting show

vCenter service settings
+-----+-----+-----+-----+
| Poll Frequency Hours | Dead Link Clearing Time Days |
+-----+-----+-----+-----+
| 4                     | 3                             |
+-----+-----+-----+-----+
Setting Details
--- Time Elapsed: 11.409207ms ---
```

This example shows the output for the `efa vcenter debug tenant` command.

```
$ efa vcenter debug tenant --host 10.24.85.111

+-----+-----+-----+-----+-----+
| Tenant Name          | Ports | VLANs | Status          | Reason |
+-----+-----+-----+-----+-----+
| vcenter-10.24.85.111 |      | 2-4089 | Created Successfully |      |
+-----+-----+-----+-----+-----+
Tenant Details

EPG Configuration Details for vCenter 10.24.85.111
+-----+-----+-----+-----+-----+-----+
| EPG Name | Ports | POs | Switchport Mode | VLANs | Status | Reason |
+-----+-----+-----+-----+-----+-----+
Endpoint Group Details
--- Time Elapsed: 429.0076ms ---
```

This example shows the output for the `efa vcenter debug event` command.

```
$ efa vcenter debug event --host 10.24.85.111

+-----+-----+-----+-----+-----+
+-----+-----+-----+-----+-----+
| Task: Update network configuration | 10.24.81.10 |
ESXi Host | 2020.03.03 23:44:25 | 188872 |
+-----+-----+-----+-----+-----+
+-----+-----+-----+-----+-----+
| dvPort group VM network 200-220 in SRA-Dev-DC | VM network 200-220 |
Distributed Virtual Portgroup | 2020.03.03 16:23:26 | 188569 |
| was reconfigured. Modified: |
| config.defaultPortConfig.vlan: (inherited = false, vlanId |
| = 200) -> (inherited = false, vlanId = ((start = 0, end = |
| 200))); Added: Deleted: |
| | | |
+-----+-----+-----+-----+-----+
+-----+-----+-----+-----+-----+
| Task: Update network configuration | 10.24.82.20 |
ESXi Host | 2020.03.03 16:21:10 | 188565 |
+-----+-----+-----+-----+-----+
```

```

+-----+-----+-----+
| dvPort group VM network 200-220 in SRA-Dev-DC | VM network 200-220 |
Distributed Virtual Portgroup | 2020.03.03 16:19:04 | 188564 |
| was reconfigured.      Modified:
|
| config.defaultPortConfig.vlan: (inherited = false, vlanId =
|
| ((start = 200, end = 220))) -> (inherited = false, vlanId =
|
| 200);      Added:      Deleted:
|
+-----+-----+-----+
Events Details
--- Time Elapsed: 507.006ms ---

```

The following is an example of the `efa vcenter debug tenant` command.

```

$ efa vcenter debug tenant --host 10.24.85.111

Tenant Configuration Details for vCenter 10.24.85.111
+-----+-----+-----+-----+-----+
| Tenant Name | Ports | VLANs | Status | Reason |
+-----+-----+-----+-----+-----+
| vcenter-10.24.85.111 | | 2-4089 | Created Successfully | |
+-----+-----+-----+-----+-----+

Tenant Details

EPG Configuration Details for vCenter 10.24.85.111
+-----+-----+-----+-----+-----+
| EPG Name | Ports | POs | Switchport Mode | VLANs | Status | Reason |
+-----+-----+-----+-----+-----+

Endpoint Group Details
--- Time Elapsed: 429.0076ms ---

```

```

$ efa vcenter debug event --host 10.24.85.111

vCenter Events Total Count (4) for host 10.24.85.111
+-----+-----+-----+-----+-----+
| Target Type | Description | Time | ID | Target |
+-----+-----+-----+-----+-----+
| Task: Update network configuration | 10.24.81.10 |
ESXi Host | 2020.03.03 23:44:25 | 188872 |
+-----+-----+-----+-----+-----+
| dvPort group VM network 200-220 in SRA-Dev-DC | VM network 200-220 |
Distributed Virtual Portgroup | 2020.03.03 16:23:26 | 188569 |
| was reconfigured.      Modified:
|
| config.defaultPortConfig.vlan: (inherited = false, vlanId
|
| = 200) -> (inherited = false, vlanId = ((start = 0, end =
|
| 200)));      Added:      Deleted:
|
+-----+-----+-----+-----+-----+

```

```

+-----+-----+-----+
| Task: Update network configuration | 10.24.82.20 |
ESXi Host | 2020.03.03 16:21:10 | 188565 |
+-----+-----+-----+
+-----+-----+-----+
| dvPort group VM network 200-220 in SRA-Dev-DC | VM network 200-220 |
Distributed Virtual Portgroup | 2020.03.03 16:19:04 | 188564 |
| was reconfigured. Modified: |
| | |
| config.defaultPortConfig.vlan: (inherited = false, vlanId = |
| | |
| ((start = 200, end = 220))) -> (inherited = false, vlanId = |
| | |
| 200); Added: Deleted: |
| | |
+-----+-----+-----+
Events Details
--- Time Elapsed: 507.006ms ---

```

This command sets the polling frequency to 5 minutes.

```

$ efa vcenter debug setting update --poll-frequency=5

vCenter service settings updated successfully
--- Time Elapsed: 366.992ms ---

```

This example command sets the dead-link-cleaning-time value to 4 days.

```

$ efa vcenter debug setting update --dead-link-clearing-time=4

vCenter service settings updated successfully
--- Time Elapsed: 381.2133ms ---

```

This example sets the log level to debug for this EFA instance.

```

$ efa vcenter debug set --level=debug

Level debug set successfully.
--- Time Elapsed: 12.0073ms ---

```