

Network OS Security

Supporting Network OS v6.0.0

Contents

Preface.....	9
Document conventions.....	9
Text formatting conventions.....	9
Command syntax conventions.....	9
Notes, cautions, and warnings.....	10
Brocade resources.....	10
Contacting Brocade Technical Support.....	11
Brocade customers.....	11
Brocade OEM customers.....	11
Document feedback.....	11
About this document.....	13
Supported hardware and software.....	13
Using the Network OS CLI	14
What's new in this document.....	14
Managing User Accounts.....	15
Understanding and managing user accounts.....	15
Default accounts in the local switch user database.....	15
User account attributes.....	15
Configuring user accounts.....	16
Understanding and managing password policies.....	18
Password policies overview.....	19
Configuring password policies.....	21
Understanding and managing role-based access control.....	23
Default roles.....	23
User-defined roles.....	23
Displaying a role.....	24
Creating or modifying a role.....	24
Deleting a role.....	24
Commonly used roles.....	24
Understanding and managing command access rules.....	25
Specifying rule commands with multiple options.....	26
Verifying rules for configuration commands.....	26
Configuring rules for operational commands.....	26
Configuring rules for interface key-based commands.....	27
Configuring a placeholder rule.....	28
Configuring rule processing.....	28
Adding a rule.....	28
Changing a rule.....	29
Deleting a rule.....	30
Displaying a rule.....	30
Logging and analyzing security events.....	30
Configuring External Server Authentication.....	31
Understanding and configuring remote server authentication.....	31
Remote server authentication overview.....	31
Configuring remote server authentication.....	32

LDAP Server Authentication.....	35
Understanding and configuring LDAP.....	35
User authentication.....	35
Server authentication.....	36
Server authorization.....	36
FIPS compliance.....	36
Configuring LDAP.....	36
RADIUS Server Authentication.....	45
Understanding and configuring RADIUS.....	45
Authentication and accounting.....	45
Authorization.....	45
Account password changes.....	46
RADIUS authentication through management interfaces.....	46
Configuring server-side RADIUS support.....	46
Configuring client-side RADIUS support.....	49
TACACS+ Server Authentication.....	53
Understanding and configuring TACACS+	53
TACACS+ authorization.....	53
TACACS+ authentication through management interfaces.....	53
Supported TACACS+ packages and protocols.....	53
TACACS+ configuration components.....	53
Configuring the client for TACACS+ support.....	54
Configuring TACACS+ accounting on the client side.....	56
Configuring TACACS+ on the server side	59
Configuring TACACS+ for a mixed vendor environment.....	60
HTTPS Certificates.....	63
HTTPS certificate overview.....	63
Configuring HTTPS certificates.....	63
Disabling HTTPS certificates.....	65
Enabling HTTPS service.....	66
Disabling HTTPS service.....	66
Configuring and Managing ACLs.....	67
ACL overview.....	67
Application of ACLs to device interfaces.....	67
Configuring and managing Layer 2 (MAC) ACLs.....	68
MAC ACL configuration guidelines.....	68
Creating a standard MAC ACL.....	69
Creating an extended MAC ACL.....	69
Applying Layer 2 ACLs to interfaces	70
Modifying MAC ACL rules.....	71
Reordering the sequence numbers in a MAC ACL.....	72
Creating a MAC ACL rule enabled for counter statistics.....	72
ACL logs.....	73
Configuring and managing Layer 3 (IPv4 and IPv6) ACLs.....	74
Layer 3 ACL configuration guidelines.....	74
Creating a standard IPv4 ACL.....	75
Creating a standard IPv6 ACL.....	76
Creating an extended IPv4 ACL.....	76

Creating an extended IPv6 ACL.....	77
Applying Layer 3 ACLs to interfaces	77
Modifying Layer 3 ACL rules.....	80
Reordering the sequence numbers in a Layer 3 ACL.....	80
ACL counter statistics (Layer 3).....	81
ACL logs.....	82
ACL Show and Clear commands.....	83
Configuring Fabric Authentication.....	85
Fabric authentication overview.....	85
DH-CHAP.....	85
Shared secret keys.....	85
Switch connection control policy.....	86
Port Security.....	86
Understanding fabric authentication.....	88
Configuring SSH server key exchange.....	88
Configuring an authentication policy	89
Configuring DH-CHAP shared secrets.....	90
Setting up secret keys	90
Setting the authentication policy parameters.....	90
Activating the authentication policy.....	91
Configuring defined and active SCC policy sets.....	91
Configuring port security.....	94
Configuring port security on an access port.....	94
Configuring port security on a trunk port.....	94
Configuring port-security MAC address limits.....	95
Configuring port-security shutdown time.....	95
Configuring OUI-based port security.....	95
Configuring port security with sticky MAC addresses.....	96
Router Advertisement (RA) Guard.....	97
RA Guard overview.....	97
RA Guard configuration guidelines	97
Enabling and disabling RA Guard	98
RA Guard Show commands.....	98

Copyright Statement

© 2015, Brocade Communications Systems, Inc. All Rights Reserved.

ADX, Brocade, Brocade Assurance, the B-wing symbol, DCX, Fabric OS, HyperEdge, ICX, MLX, MyBrocade, OpenScript, The Effortless Network, VCS, VDX, Vplane, and Vyatta are registered trademarks, and Fabric Vision and vADX are trademarks of Brocade Communications Systems, Inc., in the United States and/or in other countries. Other brands, products, or service names mentioned may be trademarks of others.

Notice: This document is for informational purposes only and does not set forth any warranty, expressed or implied, concerning any equipment, equipment feature, or service offered or to be offered by Brocade. Brocade reserves the right to make changes to this document at any time, without notice, and assumes no responsibility for its use. This informational document describes features that may not be currently available. Contact a Brocade sales office for information on feature and product availability. Export of technical data contained in this document may require an export license from the United States government.

The authors and Brocade Communications Systems, Inc. assume no liability or responsibility to any person or entity with respect to the accuracy of this document or any loss, cost, liability, or damages arising from the information contained herein or the computer programs that accompany it.

The product described by this document may contain open source software covered by the GNU General Public License or other open source license agreements. To find out which open source software is included in Brocade products, view the licensing terms applicable to the open source software, and obtain a copy of the programming source code, please visit <http://www.brocade.com/support/oscd>.

Preface

- Document conventions..... 9
- Brocade resources..... 10
- Contacting Brocade Technical Support..... 11
- Document feedback..... 11

Document conventions

The document conventions describe text formatting conventions, command syntax conventions, and important notice formats used in Brocade technical documentation.

Text formatting conventions

Text formatting conventions such as boldface, italic, or Courier font may be used in the flow of the text to highlight specific words or phrases.

Format	Description
bold text	Identifies command names Identifies keywords and operands Identifies the names of user-manipulated GUI elements
<i>italic text</i>	Identifies text to enter at the GUI Identifies emphasis Identifies variables
Courier font	Identifies document titles Identifies CLI output Identifies command syntax examples

Command syntax conventions

Bold and italic text identify command syntax components. Delimiters and operators define groupings of parameters and their logical relationships.

Convention	Description
bold text	Identifies command names, keywords, and command options.
<i>italic text</i>	Identifies a variable.
value	In Fibre Channel products, a fixed value provided as input to a command option is printed in plain text, for example, --show WWN .
[]	Syntax components displayed within square brackets are optional. Default responses to system prompts are enclosed in square brackets.
{ x y z }	A choice of required parameters is enclosed in curly brackets separated by vertical bars. You must select one of the options. In Fibre Channel products, square brackets may be used instead for this purpose.

Convention	Description
x y	A vertical bar separates mutually exclusive elements.
< >	Nonprinting characters, for example, passwords, are enclosed in angle brackets.
...	Repeat the previous element, for example, <i>member[member...]</i> .
\	Indicates a "soft" line break in command examples. If a backslash separates two lines of a command input, enter the entire command at the prompt without the backslash.

Notes, cautions, and warnings

Notes, cautions, and warning statements may be used in this document. They are listed in the order of increasing severity of potential hazards.

NOTE

A Note provides a tip, guidance, or advice, emphasizes important information, or provides a reference to related information.

ATTENTION

An Attention statement indicates a stronger note, for example, to alert you when traffic might be interrupted or the device might reboot.



CAUTION

A Caution statement alerts you to situations that can be potentially hazardous to you or cause damage to hardware, firmware, software, or data.



DANGER

A Danger statement indicates conditions or situations that can be potentially lethal or extremely hazardous to you. Safety labels are also attached directly to products to warn of these conditions or situations.

Brocade resources

Visit the Brocade website to locate related documentation for your product and additional Brocade resources.

You can download additional publications supporting your product at www.brocade.com. Select the Brocade Products tab to locate your product, then click the Brocade product name or image to open the individual product page. The user manuals are available in the resources module at the bottom of the page under the Documentation category.

To get up-to-the-minute information on Brocade products and resources, go to [MyBrocade](#). You can register at no cost to obtain a user ID and password.

Release notes are available on [MyBrocade](#) under Product Downloads.

White papers, online demonstrations, and data sheets are available through the [Brocade website](#).

Contacting Brocade Technical Support

As a Brocade customer, you can contact Brocade Technical Support 24x7 online, by telephone, or by e-mail. Brocade OEM customers contact their OEM/Solutions provider.

Brocade customers

For product support information and the latest information on contacting the Technical Assistance Center, go to <http://www.brocade.com/services-support/index.html>.

If you have purchased Brocade product support directly from Brocade, use one of the following methods to contact the Brocade Technical Assistance Center 24x7.

Online	Telephone	E-mail
<p>Preferred method of contact for non-urgent issues:</p> <ul style="list-style-type: none"> • My Cases through MyBrocade • Software downloads and licensing tools • Knowledge Base 	<p>Required for Sev 1-Critical and Sev 2-High issues:</p> <ul style="list-style-type: none"> • Continental US: 1-800-752-8061 • Europe, Middle East, Africa, and Asia Pacific: +800-AT FIBREE (+800 28 34 27 33) • For areas unable to access toll free number: +1-408-333-6061 • Toll-free numbers are available in many countries. 	<p>support@brocade.com</p> <p>Please include:</p> <ul style="list-style-type: none"> • Problem summary • Serial number • Installation details • Environment description

Brocade OEM customers

If you have purchased Brocade product support from a Brocade OEM/Solution Provider, contact your OEM/Solution Provider for all of your product support needs.

- OEM/Solution Providers are trained and certified by Brocade to support Brocade® products.
- Brocade provides backline support for issues that cannot be resolved by the OEM/Solution Provider.
- Brocade Supplemental Support augments your existing OEM support contract, providing direct access to Brocade expertise. For more information, contact Brocade or your OEM.
- For questions regarding service levels and response times, contact your OEM/Solution Provider.

Document feedback

To send feedback and report errors in the documentation you can use the feedback form posted with the document or you can e-mail the documentation team.

Quality is our first concern at Brocade and we have made every effort to ensure the accuracy and completeness of this document. However, if you find an error or an omission, or you think that a topic needs further development, we want to hear from you. You can provide feedback in two ways:

- Through the online feedback form in the HTML documents posted on www.brocade.com.
- By sending your feedback to documentation@brocade.com.

Provide the publication title, part number, and as much detail as possible, including the topic heading and page number if applicable, as well as your suggestions for improvement.

About this document

- Supported hardware and software.....13
- Using the Network OS CLI14
- What's new in this document.....14

Supported hardware and software

In those instances in which procedures or parts of procedures documented here apply to some switches but not to others, this guide identifies exactly which switches are supported and which are not.

Although many different software and hardware configurations are tested and supported by Brocade Communications Systems, Inc. for Network OS 6.0.0, documenting all possible configurations and scenarios is beyond the scope of this document.

The following hardware platforms are supported by this release of Network OS:

- Brocade VDX 2740

NOTE

The Brocade VDX 2740 is the equivalent of the Lenovo Flex System EN4023 10Gb Scalable Switch. This platform is identified in the system as EN4023.

- Brocade VDX 6740
 - Brocade VDX 6740-48
 - Brocade VDX 6740-64
- Brocade VDX 6740T
 - Brocade VDX 6740T-48
 - Brocade VDX 6740T-64
 - Brocade VDX 6740T-1G
- Brocade VDX 6940-36Q
- Brocade VDX 8770
 - Brocade VDX 8770-4
 - Brocade VDX 8770-8

To obtain information about a Network OS version other than this release, refer to the documentation specific to that version.

Using the Network OS CLI

For complete instructions and support for using the Network OS command line interface (CLI), refer to the *Network OS Command Reference*.

What's new in this document

The *Network OS Security Configuration Guide* is a new publication. It replaces the following sections of the *Network OS Administration Guide*:

- Configuring ACLs
- Section II: Network OS Security Configuration

The content has been updated with the following changes:

- Updated for flow-based QoS.
- ACL configuration support revised and updated for Network OS v5.0.1.
- Deprecated standalone information removed.

Managing User Accounts

- Understanding and managing user accounts..... 15
- Understanding and managing password policies..... 18
- Understanding and managing role-based access control..... 23
- Understanding and managing command access rules..... 25
- Logging and analyzing security events..... 30

Understanding and managing user accounts

A user account allows authorized user access to the device Command Line Interface (CLI). A user account must be assigned a role to specify the account's access privileges. A user account can be disabled at any point, preventing the user from logging in to the device. A user can only be unlocked when the account is auto-locked because the user exceeded the configured threshold for failed login attempts. Only an administrator can create, change, unlock, or delete user accounts.

All modules that pertain to security, for example, user and user roles, role-based access control (RBAC), and password attributes (for example, encryption), are globally configurable data entities.

This means that if a Network OS device is in logical chassis cluster mode, all Network OS devices in the cluster have a common configuration for all the mentioned entities.

Default accounts in the local switch user database

The device software comes with two predefined user accounts that are part of the factory-default settings. Brocade recommends that you change the password for all default accounts during the initial installation and configuration for each device.

The default user accounts are "admin" and "user," and these accounts are associated with the corresponding admin" and "user" roles in the device-local user database. Only the "admin" and "user" users can access the CLI and, except for the account password, no other attributes can be changed for the default users "admin" and "user."

By default, all account information is stored in the device-local user database. User authentication and tracking of logins to the device is local by default.

NOTE

The maximum number of user accounts, including the default accounts, is 64. The maximum number of roles, including the default roles is 64. For any environment requiring more than 64 users, you should adopt an authentication, authorization, and accounting (AAA) service for user management. Refer to [Managing User Accounts](#) on page 15 for more information. The maximum number of active Telnet or CLI sessions supported per switch is 32.

User account attributes

The following table summarizes the available user account attributes.

TABLE 1 User account attributes

Parameter	Description
name	The name of the account. The user account name is case-sensitive, must not exceed 40 characters, and must begin with a letter or an underscore. The text string can contain letters, numbers, underscores (_), and periods (.). If the user name specified already exists, the username command modifies the existing role.

TABLE 1 User account attributes (continued)

Parameter	Description
	<p>NOTE</p> <p>If a user name with a leading underscore exists, a firmware downgrade would be blocked, and this user name would need to be removed or changed.</p>
role	The role assigned to the user defines the RBAC access privileges for the account.
password	The account password must satisfy all currently enforced password rules. Refer to Password policies overview on page 19 for more information.
encryption-level	The password encryption level. You can choose to encrypt the password (7) or leave it in clear text (0). If you do not specify an encryption level, encrypted (7) is the default level.
desc	A description of the account. The description can be up to 64 characters long, and can include any printable ASCII character, except for the following characters: single quotation marks ('), double quotation marks("), exclamation point (!), colon (:), and semi-colon (;). If the description contains spaces, you must enclose the text in double quotation marks.
enable true false	Indicates whether the account is enabled or disabled. A user whose account is disabled cannot log in. The default account status is enabled.

Configuring user accounts

When you create a user account you must specify three mandatory attributes: an account login name, a role, and a password. The remaining attributes are optional.

Creating a user account

The following example creates a new user account with the minimally required attributes: name, role, and password. The account name "brcdUser" has the default user privilege of accessing commands in privileged EXEC mode

1. In privileged EXEC mode, use the **configure terminal** command to enter global configuration mode.
2. Enter the **username** command with the specified parameters.

```
switch# configure terminal
Entering configuration mode terminal
switch(config)# username brcdUser role user password welcome
```

Examples

Use the **show running-config username** command in privileged EXEC mode to display all configured users.

```
switch# show running-config username
username admin password "BwrsDbB+tABWGWPINOVKoQ==\n" encryption-level 7 role admin desc Administrator
username user password "BwrsDbB+tABWGWPINOVKoQ==\n" encryption-level 7 role user desc User
```

Use the **show running-config username *username*** command in privileged EXEC mode to display a single user.

```
switch# show running-config username admin
username admin password "BwrsDbB+tABWGWPINOVKoQ==\n" encryption-level 7 role admin desc Administrator
```

Use the **show running-config username *username* enable** command in privileged EXEC mode to display whether the account is enabled or disabled.

```
switch# show running-config username admin enable
username admin enable true
```


Modifying an existing user account

The syntax for the account *create* and *modify* operations is essentially the same. The difference is that there are no mandatory parameters for modifying an existing account. The system internally recognizes whether a new account is created or an existing account is modified by checking whether the user account is already present in the configuration database.

The following example adds a description to the previously created "brcdUser" account.

1. In privileged EXEC mode, use the **configure terminal** command to enter global configuration mode.
2. Enter the **username** command with the specified parameters.

```
switch# configure terminal
Entering configuration mode terminal
switch(config)# username brcdUser
switch(config-username-brcdUser)# desc "Brocade guest account"
```

Disabling a user account

You can disable a user account by setting the **enable** parameter to **false**. All active login sessions for a user are terminated when a user account is disabled.

1. In privileged EXEC mode, use the **configure terminal** command to enter global configuration mode.
2. Enter the **username** command with the specified parameters.

```
switch# configure terminal
Entering configuration mode terminal
switch(config)# username testUser enable false
```

Deleting a user account

1. In privileged EXEC mode, use the **configure terminal** command to enter global configuration mode.
2. Enter the **no username** command.

```
switch# configure terminal
Entering configuration mode terminal
switch(config)# no username testUser
```

All active login sessions for a user are terminated when a user account is deleted.

Unlocking a user account

A user account is automatically locked by the system when the configured threshold for repeated failed login attempts has been reached. The account lockout threshold is a configurable parameter. Refer to [Account lockout policy](#) on page 20 for more information.

If a user account is locked out of a switch, that same user can still try to log in on another switch in the cluster. However, the unlocking is done on the given RBridge IDs, irrespective of whether the user is not locked or not on one or more switches.

The following procedure shows the commands used to unlock a user account.

NOTE

The **username** and **no username** commands are global configuration commands, but the **unlock username** command is a privileged EXEC command.

1. Enter the **show users** command in privileged EXEC mode to display currently active sessions and locked out users.
2. Enter the **unlock username** command in privileged EXEC mode to unlock the locked user account.

- Verify that the user account has been unlocked. The **show users** command should display "no locked users".

```

switch# show users
**USER SESSIONS**
RBridge
ID Username      Host Ip      Device      Time Logged In
2  user          10.70.4.105 vty/0       2012-04-30 01:59:35
1  user          10.70.4.105 vty/0       2012-04-30 01:57:41
1  admin         10.70.4.105 vty/2       2012-04-30 01:58:41
1  user          10.70.4.105 vty/3       2012-09-30 02:04:42
**LOCKED USERS**
RBridge
ID  username
1  testUser
switch# unlock username testUser
Result: Unlocking the user account is successful
switch# show users
**USER SESSIONS**
RBridge
ID Username      Host Ip      Device      Time Logged In
2  user          10.70.4.105 vty/0       2012-04-30 01:59:35
1  user          10.70.4.105 vty/0       2012-04-30 01:57:41
1  admin         10.70.4.105 vty/2       2012-04-30 01:58:41
1  user          10.70.4.105 vty/3       2012-09-30 02:04:42
**LOCKED USERS**
RBridge
ID  username
no locked users

```

Configuring a user alias

You can specify a global alias and user alias for the switch by using the **alias** command. The **alias** command operates in two slightly different ways, depending on which configuration mode you are using; global alias or user-level alias. The global alias is accessible by all users. The user-level alias is accessible only when the respective user logs in.

To set a global alias and a user alias, perform the following task in global configuration mode.

- Enter alias configuration mode.

```
switch(config)# alias-config
```

- Set the global user-alias for the switch.

```
switch(config-alias-config)# alias redwood engineering
```

- Enter user configuration mode.

```
switch(config-alias-config)# user john smith
```

- Set the user-level alias.

```
switch(config-alias-config-user)# alias manager engineering
```

Understanding and managing password policies

Password policies overview

Password policies define and enforce a set of rules that make passwords more secure by subjecting all new passwords to global restrictions. The password policies described in this section apply to the device-local user database only. Configured password policies (and all user account attributes and password state data) are synchronized across management modules and remain unchanged after an HA failover.

In logical chassis cluster mode, the configuration is applied to all the nodes in the cluster.

The following three subsections detail the configurable password policies.

Password strength policy

The following table lists configurable password policy parameters.

TABLE 2 Password policy parameters

Parameter	Description
character-restriction lower	Specifies the minimum number of lowercase alphabetic characters that must occur in the password. The maximum value must be less than or equal to the minimum length value. The default value is zero, which means there is no restriction of lowercase characters.
character-restriction upper	Specifies the minimum number of uppercase alphabetic characters that must occur in the password. The maximum value must be less than or equal to the Minimum Length value. The default value is zero, which means there is no restriction of uppercase characters.
character-restriction numeric	Specifies the minimum number of numeric characters that must occur in the password. The maximum value must be less than or equal to the Minimum Length value. The default value is zero, which means there is no restriction of numeric characters.
character-restriction special-char	<p>Specifies the minimum number of punctuation characters that must occur in the password. All printable, non-alphanumeric punctuation characters except the colon (:) are allowed. The value must be less than or equal to the Minimum Length value. The default value is zero, which means there is no restriction of punctuation characters.</p> <p>Characters added after an exclamation point are dropped. For example, if you use the password "first!second", the password will become "first!"</p> <p>Special characters, such as backslash (\) and question mark (?), are not counted as characters in a password unless the password is specified within quotes.</p>
min-length	Specifies the minimum length of the password. Passwords must be from 8 through 32 characters in length. The default value is 8. The total of the previous four parameters (lowercase, uppercase, digits, and punctuation) must be less than or equal to the Minimum Length value.
max-retry	Specifies the number of failed password logins permitted before a user is locked out. The lockout threshold can range from 0 through 16. The default value is 0. When a password fails more than one of the strength attributes, an error is reported for only one of the attributes at a time.

NOTE

Passwords can have a maximum of 40 characters.

Password encryption policy

The software supports encrypting the passwords of all existing user accounts by enabling password encryption at the device level. By default, the encryption service is disabled and passwords are stored in clear text. The following rules apply to password encryption:

- When you enable password encryption, all existing clear-text passwords will be encrypted, and any password that are added subsequently in clear-text are stored in encrypted format

In the following example, the testuser account password is created in clear text after password encryption has been enabled. The global encryption policy overrides command-level encryption settings. The password is stored as encrypted.

```
switch(config)# service password-encryption

switch(config)# do show running-config service password-encryption
service password-encryption

switch(config)# username testuser role testrole desc "Test User" encryption-level 0 password hellothere

switch(config)# do show running-config username
username admin password "BwrsDbB+tABWGwPINOvKoQ==\n" encryptionlevel 7 role admin desc Administrator
username testuser password "cONW1RQ0nTV9Az42/9uCQg==\n" encryption-level 7 role testrole desc "Test User"
username user password "BwrsDbB+tABWGwPINOvKoQ==\n" encryptionlevel 7 role user desc User
```

- When you disable the password encryption service, any new passwords added in clear text will be stored as clear text on the switch. Existing encrypted passwords remain encrypted.

In the following example, the testuser account password is stored in clear text after password encryption has been disabled. The default accounts, "user" and "admin" remain encrypted.

```
switch(config)# no service password-encryption

switch(config)# do show running-config service password-encryption no service password-encryption

switch(config)# username testuser role testrole desc "Test User" encryption-level 0 password hellothere enable
true

switch(config)# do show running-config username
username admin password "BwrsDbB+tABWGwPINOvKoQ==\n" encryptionlevel 7 role admin desc Administrator
username testuser password hellothere encryption-level 0 role testrole desc "Test User"
username user password "BwrsDbB+tABWGwPINOvKoQ==\n" encryptionlevel 7 role user desc User
```

Account lockout policy

The account lockout policy disables a user account when the user exceeds a configurable number of failed login attempts. A user whose account has been locked cannot log in. SSH login attempts that use locked user credentials are denied without the user being notified of the reason for denial.

The account remains locked until explicit administrative action is taken to unlock the account. A user account cannot be locked manually. An account that is not locked cannot be unlocked.

Failed login attempts are tracked on the local switch only. In VCS mode, the user account is locked only on the switch where the lockout occurred; the same user can still try to log in on another switch in the VCS fabric.

The account lockout policy is enforced across all user accounts except for the root account and accounts with the admin role.

Denial of service implications

The account lockout mechanism may be used to create a denial of service (DOS) condition when a user repeatedly attempts to log in to an account by using an incorrect password. Selected privileged accounts, such as root and admin, are exempted from the account lockout policy to prevent these accounts from being locked out by a DOS attack. However these privileged accounts may then become the target of password-guessing attacks.

ATTENTION

Brocade advises that you periodically examine the Security Audit logs to determine if such attacks are attempted. Refer to [Logging and analyzing security events](#) on page 30.

Password interaction with remote AAA servers

The password policies apply to local switch authentication only. External AAA servers such as RADIUS, TACACS+, or LDAP provide server-specific password-enforcement mechanisms. The password management commands operate on the device-local password database only, even when the device is configured to use an external AAA service for authentication. When so configured, authentication through remote servers is applied to the login only.

When remote AAA server authentication is enabled, an administrator can still perform user and password management functions on the local password database.

For more information on remote AAA server authentication, refer to [Managing User Accounts](#) on page 15.

Configuring password policies

Use the **password-attributes** command with specified parameters to define or modify existing password policies.

Configuring the account lockout threshold

You can configure the lockout threshold with the **password-attributes max-retry** *maxretry* command. The value of the *maxretry* specifies the number of times a user can attempt to log in with an incorrect password before the account is locked. The number of failed login attempts is counted from the last successful login. The *maxretry* can be set to a value from 0 through 16. A value of 0 disables the lockout mechanism (default).

The following example sets the lockout threshold to 5.

1. In privileged EXEC mode, use the **configure terminal** command to enter global configuration mode.
2. Enter the **password-attributes** command with the specified parameter.

```
switch# configure terminal
Entering configuration mode terminal
switch(config)# password-attributes max-retry 4
```

When a user account is locked, it can be unlocked using the procedure described in [Unlocking a user account](#) on page 17.

Creating a password policy

The following example defines a password policy that places restrictions on minimum length and enforces character restrictions and account lockout.

1. In privileged EXEC mode, use the **configure terminal** command to enter global configuration mode.

2. Enter the **password-attributes** command with the specified parameters.

```
switch# configure terminal
Entering configuration mode terminal
switch(config)# password-attributes min-length 8 max-retry 4 character-restriction lower 2 upper 1
numeric 1 special-char 1
```

Restoring the default password policy

Entering the **no** form of the **password-attributes** command resets all password attributes to their default values. If you specify a specific attribute, only that attribute is reset to the default. If you enter **no password-attributes** without operands, all password attributes are reset to their default values.

1. In privileged EXEC mode, use the **configure terminal** command to enter global configuration mode.
2. Enter the **password-attributes** command with the specified parameters.

```
switch# configure terminal
Entering configuration mode terminal
switch(config)# no password-attributes min-length
switch(config)# password-attributes max-retry 4
switch(config)# no password-attributes numeric
```

Displaying password attributes

To display configured password attributes, switch to privileged EXEC mode and enter **show running-config password-attributes**.

```
switch(config)# password-attributes max-retry 4

switch(config)# password-attributes character-restriction lower 2

switch(config)# password-attributes character-restriction upper 1 numeric 1 special-char 1

switch(config)# exit

switch# show running-config password-attributes
password-attributes max-retry 4
password-attributes character-restriction upper 1
password-attributes character-restriction lower 2
password-attributes character-restriction numeric 1
password-attributes character-restriction special-char 1

switch# configure terminal

switch(config)# no password-attributes character-restriction lower

switch(config)# no password-attributes character-restriction upper

switch(config)# exit

switch# show running-config password-attributes
password-attributes max-retry 4
password-attributes character-restriction numeric 1
password-attributes character-restriction special-char 1

switch# configure terminal

switch(config)# no password-attributes special-char

switch(config)# exit

switch# show running-config password-attributes
% No entries found.
```

Understanding and managing role-based access control

The software uses role-based access control (RBAC) as the authorization mechanism. You can create roles dynamically and associate them with rules to define the permissions applicable to a particular role. Every user account must be associated with a role, and only a single role can be associated with any given account.

RBAC specifies access rights to resources. When a user executes a command, privileges are evaluated to determine access to the command based on the role of the user.

In logical chassis cluster mode, the configuration is applied to all nodes in the cluster.

Default roles

All Brocade devices support two default roles, "user" and "admin." You cannot modify the attributes of default roles; however, you can assign the default roles to non-default user accounts. The default roles have the following access privileges:

- The user role has limited privileges that are restricted to executing **show** commands in privileged EXEC mode, as well as the following operational commands: **ping**, **ssh**, **telnet**, **timestamp**, **rasman**, and **traceroute**. User accounts associated with the user role cannot access configuration commands that are available only in global configuration mode.
- The admin role has the highest privileges. All commands available in privileged EXEC mode and in global configuration mode are accessible to the user associated with the admin role.

With a new switch, only the admin user account has access to perform user and role management operations. The admin user can create any roles and configure those roles for access to user and role management operations.

User-defined roles

In addition to the default roles, Network OS supports the creation of user-defined roles. A user-defined role starts from a basic set of privileges which are then refined by adding special rules. When you have created a role, you can assign a name to the role and then associate the role to one or more user accounts.

The following tools are available for managing user-defined roles:

- The **role** command defines new roles and deletes user-defined roles.
- The **rule** command allows you to specify access rules for specific operations and assign these rules to a given role.
- The **username** command associates a given user-defined role with a specific user account.

A user-defined role has a mandatory name and an optional description, as shown in the following table.

TABLE 3 Role attributes

Parameter	Description
name	The role name must be unique, begin with a letter, and can contain alphanumeric characters and underscores. The length of the role name should be between 4 and 32 characters. The name cannot be same as that of an existing user, an existing default role, or an existing user-defined role.
desc	An optional description of the role. The description can be up to 64 characters and can include any printable ASCII character, except for the following characters: single quotation marks ('), double quotation marks("), exclamation point (!), colon (:), and semi-colon (;). If the description

TABLE 3 Role attributes (continued)

Parameter	Description
	contains spaces, you must enclose the text in double quotation marks. if the description contains spaces

The operation of creating a role must satisfy the following criteria to succeed:

- The maximum number of roles supported on a chassis is 64.
- The **role** command must be run from an account authorized for the operation.
- The **role** command is available in global configuration mode.
- If the role specified already exists, the **role** command modifies the existing role.

Displaying a role

In privileged EXEC mode, enter the **show running-config role** command.

```
switch# show running-config role
role name VLANAdmin desc "Manages security CLIs"
role name NetworkAdmin desc "Manages Network CLIs"
role name ClusterAdmin desc "Manages Cluster CLIs"
```

Creating or modifying a role

1. In privileged EXEC mode, use the **configure terminal** command to enter global configuration mode.

```
switch# configure terminal
Entering configuration mode terminal
```

2. Enter the **role** command with the specified parameters.

```
switch(config)# role name VLANAdmin desc "Manages security CLIs"
```

Deleting a role

1. In privileged EXEC mode, use the **configure terminal** command to enter global configuration mode.

```
switch# configure terminal
Entering configuration mode terminal
```

2. Enter the **no role** command with the specified parameters.

```
switch(config)# no role name VLANAdmin
```

Commonly used roles

The following examples illustrate the creation and configuration of two frequently-used administrative roles and accounts: Brocade VCS Fabric security administrator, and FCoE Fabric administrator.

Creating a VCS Fabric security administrator role and account

The following steps create and configure a typical Brocade VCS Fabric security administrator role.

1. Create a role for a Brocade VCS Fabric security administrator.

```
switch(config)# role name NetworkSecurityAdmin desc "Manages security CLIs"
```

2. Create a user account associated with the newly created role.

```
switch(config)# username SecAdminUser role NetworkSecurityAdmin password testpassword
```

3. Create the rules to specify the RBAC permissions for the NetworkSecurityAdmin role.

```
switch(config)# rule 30 action accept operation read-write role NetworkSecurityAdmin command role
switch(config-rule-30)# exit
switch(config)# rule 31 action accept operation read-write role NetworkSecurityAdmin command rule
switch(config-rule-31)# exit
switch(config)# rule 32 action accept operation read-write role NetworkSecurityAdmin command username
switch(config-rule-32)# exit
switch(config)# rule 33 action accept operation read-write role NetworkSecurityAdmin command aaa
switch(config-rule-33)# exit
switch(config)# rule 34 action accept operation read-write role NetworkSecurityAdmin command
radius-server
switch(config-rule-34)# exit
switch(config)# rule 35 action accept operation read-write role NetworkSecurityAdmin command
config
switch(config-rule-35)# exit
```

The SecAdminUser account has been granted operational access to the configuration-level commands **role**, **rule**, **username**, **aaa**, and **radius-server**. Any account associated with the NetworkSecurityAdmin role can now create and modify user accounts, manage roles, and define rules. In addition, the role permits configuring a RADIUS server and set the login sequence.

Creating an FCoE administrator role and account

The following steps create and configure a typical FCoE administrator role.

1. Create an FCoE administrator role.

```
switch(config)# role name FCOEAdmin desc "Manages FCOE"
```

2. Create an FCoE admin user account.

```
switch(config)# username FCOEAdmUser role FCOEAdmin password testpassword
```

3. Create the rules defining the access permissions for the FCoE administrator role.

```
switch(config)# rule 40 action accept operation read-write role FCOEAdmin command interface fcoe
```

The FCOEAdmUser account that is associated with the FCoEAdmin role can now perform the FCoE operations.

Understanding and managing command access rules

Command authorization is defined in terms of an ordered set of rules that are associated with a role. Rules define and restrict a role to access modes (*read-only* or *read-write* access), and beyond that can define permit or reject on specified command groups or individual commands. You can associate multiple rules with a given user-defined role, but you can associate only one role with any given user account.

To specify a rule, you must specify at least three mandatory attributes: a rule index number, the role to which the rule should apply, and the command that is defined by the rule. The following table describes the rule attribute details.

TABLE 4 Command access rule attributes

Parameter	Description
index	A numeric identifier of the rule in the range between 1 and 512.
role	The name of the role for which the rule is defined.
command	The command for which access is defined.
operation	Optional. Defines the general access mode granted by the rule. Access can be read-only or read-write (default).
action	Optional. A modifier restricting the general access mode. The specified access is either accepted (accept) or rejected (reject). The default value is accept .

Specifying rule commands with multiple options

Commands consisting of multiple words indicating command hierarchy are separated by a space, as shown in the following examples.

```
switch(config)# rule 70 action accept operation read-write role NetworkAdmin command copy running-config
switch(config)# rule 71 action accept operation read-write role NetworkAdmin command interface management
switch(config)# rule 72 action accept operation read-write role NetworkAdmin command clear logging
```

NOTE

Rules cannot be added for commands that are not at the top level of the command hierarchy. For a list of eligible commands, type the help function (?) at the command prompt.

Verifying rules for configuration commands

You can display configuration data for a particular command by using the **show running-config** command. By default, every role can access all the **show running-config** commands. For the nondefault roles, even the permission to access the **show running-config** commands can be modified by the authorized user (admin). The user must have the read-write permission for the **configure terminal** command to execute any of the configuration commands.

The following rules govern configuration commands:

- If a role has a rule with a **read-write** operation and the **accept** action for a configuration command, the user associated with this role can execute the command and read the configuration data.
- If a role has a rule with a **read-only** operation and the **accept** action for a configuration command, the user associated with this role can only read the configuration data of the command.
- If a role has a rule with a **read-only** or **read-write** operation and the **reject** action for a configuration command, the user associated with this role cannot execute the command and can read the configuration data of the command.

Configuring rules for operational commands

Rules can be created for the specified operational commands. By default, every role can display all the operational commands but cannot execute them. The **show** commands can be accessed by all the roles.

The following rules govern operational commands:

- If a role has a rule with a **read-write** operation and the **accept** action for an operational command, the user associated with this role can execute the command.

- If a role has a rule with a **read-only** operation and the **accept** action for an operational command, the user associated with this role can access but cannot execute the command.
- If a role has a rule with a **read-only** or **read-write** operation and the **reject** action for an operational command, the user associated with this role can neither access nor execute the command.

Configuring rules for interface key-based commands

By default, every role has the permission to read the configuration data related to all the instances of the interfaces using the **show running-config interface** *interface_name rbridge-id/slot/port* command.

Rules can be created for a specific instance of the interface-related configuration commands.

The following rules govern interface key-based commands:

- If a role has a rule with a **read-write** operation and the **accept** action for only a particular instance of the interface, the user associated with this role can only modify the attributes of that instance.
- If a role has a rule with a **read-only** operation and the **accept** action for only a particular instance of the interface, the user associated with this role can only read (using the **show running-config** command) the data related to that instance of the interface.
- If a role has a rule with a **read-write** operation and the **reject** action for only a particular instance of the interface, the user associated with this role cannot execute and read the configuration data for that interface instance.

In the following example, the rules are applicable only to a particular instance of the specified interface.

```
switch(config)# rule 60 action accept operation read-write role NetworkAdmin command interface
tengigabitethernet 1/0/4
switch(config)# rule 65 action accept operation read-write role NetworkAdmin command interface
fcoe 1/0/4
switch(config)# rule 68 role NetworkAdmin action reject command interface fortygigabitethernet
1/2/4
```

- If a role has a rule with a **read-only** or **read-write** operation and the **reject** action for an interface or an instance of the interface, the user associated with this role cannot perform **clear** and **show** operations related to those interfaces or interface instances. To perform **clear** and **show** operations, the user's role must have at least **read-only** and the **accept** permission. By default, every role has the **read-only** and **accept** permission for all interface instances.

In the following example, the user associated with the NetworkAdmin role cannot perform **clear** and **show** operations related to all **tengigabitethernet** instances.

```
switch(config)# rule 30 action accept operation read-write role NetworkAdmin command interface
tengigabitethernet
```

- If a role has a rule with **read-only** or **read-write** operation, and the **reject** action for an interface **tengigabitethernet** and **fcoe** instances, the user associated with this role cannot perform **clear** and **show** operations related to those instances. To perform **clear** and **show** operations related to **interface tengigabitethernet** and **fcoe** instances, the user's role should have at least **read-only** and **accept** permission. By default, every role has the **read-only** or **accept** permission for all interface instances.

In the following example, the user associated with the NetworkAdmin role cannot perform some of the **clear** and **show** operations related to all **tengigabitethernet** instances.

```
switch(config)# rule 30 role NetworkAdmin action reject command interface tengigabitethernet
```

- A rule created with the **no-operation** command does not enforce any authorization rules. Instead, the **no-operation** instance can be considered as a placeholder for a valid command that will be added later.

```
switch(config)# rule 75 action reject operation read-write role NetworkAdmin command no-operation
switch(config)# rule 75 command firmware
```

- The **dot1x** option under the **interface** instance submode can only be configured if the role has the **read-write** and **accept** permissions for both the **dot1x** command and **interface te** instances.

In the following example, the user associated with the CfgAdmin role can access and execute the **dot1x** command in the specified **tengigabitethernet** instance.

```
switch(config)# rule 16 action accept operation read-write role cfgadmin command interface
tengigabitethernet
switch(config)# rule 17 action accept operation read-write role cfgadmin command dot1x
```

- To execute the **no vlan** and **no spanning-tree** commands under the submode of **interface tengigabitethernet** instances, a user must have **read-write** and **accept** permissions for both the **vlan** and the **protocol spanning-tree** commands. If a user has **read-write** and **accept** permissions for the **vlan** and **spanning-tree** commands and **read-write** and **accept** permissions for at least one interface instance, the user can perform the **no vlan** and **no spanning-tree** operations on the other **interface** instances for which the user has only default permissions (**read-only** and **accept**).

Configuring a placeholder rule

A rule created with the **no-operation** command does not enforce any authorization rules. Instead, you can use the **no-operation** instance as a placeholder for a valid command that is added later, as shown in the following example.

- In privileged EXEC mode, use the **configure terminal** command to enter global configuration mode.

```
switch# configure terminal
Entering configuration mode terminal
```

- Enter the **rule** command with the specified parameters and the **no-operation** keyword as a placeholder.

```
switch(config)# rule 75 action reject operation read-write role NetworkAdmin command no-operation
```

- Enter the **rule** command with the specified command to replace the placeholder.

```
switch(config)# rule 75 command firmware
```

Configuring rule processing

When a user executes a command, rules are searched in ascending order by index for a match and the action of the first matching rule is applied. If none of the rules match, command execution is blocked. If there are conflicting permissions for a role in different indices, the rule with lowest index number is applied.

As an exception, when a match is found for a rule with the **read-only** operation and the **accept** action, the system seeks to determine whether there are any rules with the **read-write** operation and the **accept** action. If such rules are found, the rule with the **read-write** permission is applied.

In the following example, two rules with action **accept** are present and rule 11 is applied.

```
switch(config)# rule 9 operation read-only action accept role NetworkAdmin command aaa
switch(config)# rule 11 operation read-write action accept role NetworkAdmin command aaa
```

Adding a rule

You add a rule to a role by entering the **rule** command with appropriate options. Any updates to the authorization rules will not apply to the active sessions of the users. The changes are applied only when users log out from the current session and log in to a new session.

The following example creates the rules that authorize the security administrator role to create and manage user accounts:

1. In privileged EXEC mode, use the **configure terminal** command to enter global configuration mode.

```
switch# configure terminal
Entering configuration mode terminal
```

2. Create a rule specifying read-write access to the global configuration mode.

```
switch(config)# rule 150 action accept operation read-write role SecAdminUser command config
```

3. Create a second rule specifying read-write access to the **username** command. Enter the **rule** command with the specified parameters.

```
switch(config)# rule 155 action accept operation read-write role SecAdminUser command username
```

4. After creating the rules, the user of the SecAdminUser account can log in to the switch and create or modify the user accounts by using the **username** command.

```
switch login: SecAdminUser
Password:*****
Welcome to the ConfD CLI
SecAdminUser connected from 127.0.0.1 using console on switch

switch# configure terminal
Entering configuration mode terminal
Current configuration users:
admin console (cli from 127.0.0.1) on since 2010-08-16 18:35:05 terminal mode

switch(config)# username testuser role user password (<string>): *****
```

Changing a rule

The following example changes the previously created rule (index number 155) so that the **username** command is replaced by the **role** command.

1. In privileged EXEC mode, use the **configure terminal** command to enter global configuration mode.

```
switch# configure terminal
Entering configuration mode terminal
```

2. Enter the **rule** command, specifying an existing rule (index 155) and changing the **command** attribute to the **role** command.

```
switch(config)# rule 155 command role
```

After changing rule 155, SecAdminUser can log in to the switch and execute the **role** command and not the **username** command.

```
switch# login SecAdminUser
switch# Password: *****
Welcome to the ConfD CLI
SecAdminUser connected from 127.0.0.1 using console on sw0
switch# configure terminal
Entering configuration mode terminal
Current configuration users:
admin console (cli from 127.0.0.1) on since 2010-08-16 18:35:05 terminal mode
switch(config)# role name NetworkAdmin
```

Deleting a rule

1. In privileged EXEC mode, use the **configure terminal** command to enter global configuration mode.

```
switch# configure terminal
Entering configuration mode terminal
```

2. Enter the **no rule** command followed by the index number of the rule you wish to delete.

```
switch(config)# no rule 155
```

After rule 155 is deleted, the SecAdminUser can no longer access the **role** command.

Displaying a rule

Enter the **show running-config rule** command in privileged EXEC mode to display all configured rules. You can modify the output by using the command and specifying additional parameters.

```
switch# show running-config rule
rule 30 action accept operation read-write role NetworkSecurityAdmin rule 30 command role
rule 31 action accept operation read-write role NetworkSecurityAdmin rule 31 command rule
rule 32 action accept operation read-write role NetworkSecurityAdmin rule 32 command username
rule 33 action accept operation read-write role NetworkSecurityAdmin rule 33 command aaa
rule 34 action accept operation read-write role NetworkSecurityAdmin rule 34 command radius-server
rule 35 action accept operation read-write role NetworkSecurityAdmin rule 35 command configure
rule 40 action accept operation read-write role FCOEAdmin rule 40 command "interface fcoe"
```

Logging and analyzing security events

Security event logging utilizes the RASLog audit infrastructure to record security-related audit events. Any user-initiated security event generates an auditable event. Audited events are generated for all Management interfaces. In Brocade VCS Fabric mode, for cluster-wide events, the audit is generated on all switches of the cluster.

Refer to the *Network OS Message Reference* for information on how to configure, monitor, and analyze security audit logging.

Configuring External Server Authentication

- [Understanding and configuring remote server authentication.....31](#)

Understanding and configuring remote server authentication

Remote server authentication overview

The software supports various protocols to provide external Authentication, Authorization, and Accounting (AAA) services for Brocade devices. Supported protocols include the following:

- RADIUS — Remote authentication dial-in user service
- LDAP/AD — Lightweight Directory Access Protocol using Microsoft Active Directory (AD) in Windows
- TACACS+ — Terminal access controller access-control system plus

When configured to use a remote AAA service, the switch acts as a network access server client. The switch sends all authentication, authorization, and accounting (AAA) service requests to the remote RADIUS, LDAP, or TACACS+ server. The remote AAA server receives the request, validates the request, and sends a response back to the switch.

The supported management access channels that integrate with RADIUS, TACACS+, or LDAP include serial port, Telnet, or SSH.

When configured to use a remote RADIUS, TACACS+, or LDAP server for authentication, a switch becomes a RADIUS, TACACS+, or LDAP client. In either of these configurations, authentication records are stored in the remote host server database. Login and logout account name, assigned permissions, and time-accounting records are also stored on the AAA server for each user.

Brocade recommends that you configure at least two remote AAA servers to provide redundancy in the event of failure. For each of the supported AAA protocols, you can configure up to five external servers on the switch. Each switch maintains its own server configuration.

Login authentication mode

The authentication mode is defined as the order in which AAA services are used on the switch for user authentication during the login process. The software supports two sources of authentication: primary and secondary. The secondary source of authentication is used in the event of primary source failover and is optional for configuration. You can configure four possible sources for authentication:

- Local — Use the default switch-local database (default)
- RADIUS — Use an external RADIUS server
- LDAP — Use an external LDAP server
- TACACS+ — Use an external TACACS+ server

By default, external AAA services are disabled, and AAA services default to the switch-local user database. Any environment requiring more than 64 users should adopt AAA servers for user management.

When the authentication, authorization, and accounting (AAA) mode is changed, an appropriate message is broadcast to all logged-in users, and the active login sessions end. If the primary source is set to an external AAA service (RADIUS, LDAP, or TACACS+) and the secondary source is not configured, the following events occur:

- For Telnet-based and SSH connections-based logins, the login authentication fails if none of the configured (primary source) AAA servers respond or if an AAA server rejects the login.
- For a serial port (console) connection-based login, if a user's login fails for any reason with the primary source, failover occurs and the same user credentials are used for login through the local source. This failover is not explicit.
- If the primary source is set to an external AAA service, and the secondary source is configured to be local (for example, by means of the **aaa authentication login radius local** command), then, if login fails through the primary source either because none of the configured servers is responding or the login is rejected by a server, failover occurs and authentication occurs again through the secondary source (local) for releases earlier than Network OS 4.0.

In Network OS 4.0 and later, when **local** is specified as the secondary authentication service, failover to local does not occur if login is rejected by a server. In addition, when the authentication service is changed, the user sessions are not logged out. If a user wants to log out all connected user sessions, the **clear sessions** command should be used.

- In Network OS 4.0 and later, when **local** is specified as the secondary authentication service, local authentication is tried only when the primary AAA authentication service (TACACS+, RADIUS, or LDAP) is either unreachable or not available. Local authentication will not be attempted if authentication with the primary service fails.
- In Network OS 4.0 and later, you can specify to use the local switch database if prior authentication methods on a RADIUS or TACACS+ server are not active or if authentication fails. To specify this option, use the **local-auth-fallback** command. In the following example, the local switch database will be used if the RADIUS server is unavailable.

```
switch(config)# aaa authentication login radius local-auth-fallback
```

Conditions for conformance

- If the first source is specified as **default**, do not specify a second source. A second source signals a request to set the login authentication mode to its default value, which is **local**. If the first source is **local**, the second source cannot be set to any value, because the failover will never occur.
- The source of authentication (except **local**) and the corresponding server type configuration are dependent on each other. Therefore, at least one server should be configured before that server type can be specified as a source.
- If the source is configured to be a server type, you cannot delete a server of that type if it is the only server in the list. For example, if there are no entries in the TACACS+ server list, the authentication mode cannot be set to **tacacs+** or **tacacs+ local**. Similarly, when the authentication mode is **radius** or **radius local**, a RADIUS server cannot be deleted if it is the only one in the list.

Configuring remote server authentication

This section introduces the basics of configuring remote server authentication using RADIUS and TACACS+.

- [Understanding and configuring RADIUS](#) on page 45
- [Understanding and configuring TACACS+](#) on page 53
- [Understanding and configuring LDAP](#) on page 35

Setting and verifying the login authentication mode

The following procedure configures TACACS+ as the primary source of authentication and the switch-local user database as the secondary source. For complete information on login authentication mode, refer to the **aaa authentication login** command in the *Network OS Command Reference*.

1. In privileged EXEC mode, use the **configure terminal** command to enter global configuration mode.

```
switch# configure terminal
Entering configuration mode terminal
```

2. Enter the **aaa authentication login** command with the specified parameters.

```
switch(config)# aaa authentication login tacacs+ local

Broadcast message from root (pts/0) Tue Apr 5 16:34:12 2011...
AAA Server Configuration Change: all accounts will be logged out
```

3. Enter the **do show running-config aaa** command to display the configuration.

```
switch(config)# do show running-config aaa
aaa authentication login tacacs+ local
```

4. Log in to the switch using an account with TACACS+-only credentials to verify that TACACS+ is being used to authenticate the user.

Resetting the login authentication mode

1. In privileged EXEC mode, use the **configure terminal** command to enter global configuration mode.

```
switch# configure terminal
Entering configuration mode terminal
```

2. Enter the **no aaa authentication login** command to remove the configured authentication sequence and to restore the default value (Local only).

```
switch(config)# no aaa authentication login
```

3. Verify the configuration with the **do show running-config aaa** command.

```
switch(config)# do show running-config aaa
aaa authentication login local
```

4. Log in to the switch using an account with TACACS+-only credentials. The login should fail with an "access denied" error.
5. Log in to the switch using an account with local-only credentials. The login should succeed.

Changing the login authentication mode

You can set the authentication mode with the **aaa authentication login** command, but you cannot change or delete an existing authentication mode with the same command. You can only reset the configuration to the default value using the **no aaa authentication login** command and then reconfigure the authentication sequence to the correct value.

NOTE

In a configuration with primary and secondary sources of authentication, the primary mode cannot be modified alone. First remove the existing configuration and then configure it to the required configuration.

1. In privileged EXEC mode, use the **configure terminal** command to enter global configuration mode.

```
switch# configure terminal
Entering configuration mode terminal
```

2. Enter the **no aaa authentication login** command to reset the configuration to the default value.

```
switch(config)# no aaa authentication login tacacs+ local
```

3. Enter the **aaa authentication login** command and specify the desired authentication mode.

```
switch(config)# aaa authentication login radius local
Broadcast message from root (pts/0) Tue Apr 5 16:34:12 2011...
AAA Server Configuration Change: all accounts will be logged out
```

4. Verify the configuration with the **do show running-config aaa** command.

```
switch(config)# do show running-config aaa
aaa authentication login radius local
```

5. Log in to the switch using an account with TACACS+ credentials. The login should fail with an "access denied" error.
6. Log in to the switch using an account with RADIUS credentials. The login should succeed.

LDAP Server Authentication

- [Understanding and configuring LDAP.....](#) 35

Understanding and configuring LDAP

Lightweight Directory Access Protocol (LDAP) is an open-source protocol for accessing distributed directory services that act in accordance with X.500 data and service models. LDAP assumes that one or more servers jointly provide access to a Directory Information Tree (DIT) where data is stored and organized as entries in a hierarchical fashion. Each entry has a name called the distinguished name that uniquely identifies it.

LDAP can also be used for centralized authentication through directory service.

Active Directory (AD) is a directory service which supports a number of standardized protocols such as LDAP, Kerberos authentication, and DNS, to provide various network services. AD uses a structured data store as the basis for a logical, hierarchical organization of directory information. AD includes user profiles and groups as the part of directory information, so it can be used as a centralized database for authenticating the third-party resources.

If you are in logical chassis cluster mode, the configuration is applied to all nodes in the cluster.

User authentication

A Brocade device can be configured as an LDAP client for authentication with an Active Directory (AD) server, supporting authentication with a clear text password over the Transport Layer Security (TLS) channel. Optionally, it supports server authentication during the TLS handshake. Only the user principal name from the AD server is supported for LDAP authentication on the Brocade device. The Common Name-based authentication is not supported. When you log in from the device, the complete user principal name, including domain, should be entered (for example, "testuser@sec.example.com").

LDAP supports alternative user principal names, such as:

- username
- username@AD.com
- username@ADsuffix.com
- username@newUPN.com

Network OS supports LDAP authentication with the following AD servers:

- Windows 2000
- Windows 2003
- Windows 2008 AD

A Brocade device configured to perform LDAP-based authentication supports its access through a serial port, Telnet, and SSH. These access channels require that you know the device IP address or name to connect to the devices.

A maximum of five AD servers can be configured on a Brocade device.

If you are in logical chassis cluster mode, all LDAP server and map role configurations (except "show certutil" and "certutil") are applied to all devices in the cluster.

Server authentication

As a part of user authentication using LDAP, the Brocade device can be configured to support server certificate authentication. To enable server authentication (server certificate verification), follow these guidelines:

- While configuring the LDAP server, the Fully Qualified Domain Name (FQDN) of the AD server should be added as the host parameter, instead of the IP address. A FQDN is needed to validate the server identity as mentioned in the common name of the server certificate.
- The DNS server must be configured on the device prior to adding AD server with a domain name or a hostname. Without a DNS server, the name resolution of the server fails, and then the add operation fails. Use the `ip dns` command to configure DNS.
- The CA certificate of the AD server's certificate should be installed on the device. Currently, only PEM-formatted CA certificates can be imported into the device.

If more than one server is configured and an LDAP CA certificate is imported for one server on the device, the device performs the server certificate verification on all servers. Thus, either CA certificates for all servers should be imported, or CA certificates should not be imported for any of the servers. After the CA certificate is imported, it is retained even if the device is set back to its default configuration. If the CA certificate is not required, you should explicitly delete it.

Server authorization

The Active Directory (AD) server is used only for authentication. Command authorization of the AD users is not supported in the AD server. Instead, the access control of AD users is enforced locally by role-based access control (RBAC) on the device.

A user on an AD server should be assigned a nonprimary group, and that group name should be either matched or mapped to one of the existing roles on the device; otherwise, authentication will fail. After successful authentication, the device receives the nonprimary group of the user from the AD server and finds the corresponding user role for the group based on the matched or mapped roles.

If the device fails to get the group from the AD server, or the LDAP user is not a member of any matching AD group, the user authentication fails. Groups that match with the existing device roles have higher priority than the groups that are mapped with the device roles. Thereafter, the role obtained from AD server (or default role) is used for RBAC.

If multiple nonprimary groups are associated to the AD user, only one of the groups should be mapped or matched to the device role. If multiple AD groups of AD users are mapped or matched to the device roles, authentication of the user is successful, but there is no guarantee as to which role the AD user gets among those multiple roles. After successful authentication, the device gets the nonprimary group of the user from the AD server and finds the corresponding user role for group based on the matched or mapped roles. Thereafter, the role obtained from the AD server (or default role) will be used for RBAC.

A maximum 16 AD groups can be mapped to the device roles.

FIPS compliance

To support FIPS compliance, the CA certificate of the AD server's certificate should be installed on the switch, and the FIPS-compliant TLS ciphers for LDAP should be used.

Configuring LDAP

Configuring support for LDAP requires configuring both the client and the server. This section presents the following major tasks, sorted by client-side and server-side activities:

Client-side tasks:

- [Configuring an Active Directory server on the client side](#) on page 37
- [Configuring Active Directory groups on the client side](#) on page 41
- [Clearing sessions on the client side](#) on page 42

Server-side tasks:

- [Configuring an Active Directory server on the client side](#) on page 37

Importing an LDAP CA certificate

The following example imports the LDAP CA certificate from a remote server to a Brocade switch using secure copy (SCP).

1. In privileged EXEC mode, enter **configure terminal** to change to global configuration mode.

```
switch# configure terminal
Entering configuration mode terminal
```

2. Enter **certutil import ldapca** with the specified parameters.

```
switch# certutil import ldapca directory /usr/ldapcacert file cacert.pem protocol SCP host
10.23.24.56 user admin password *****
```

3. Verify the import by entering **show cert-util ldapcacert**.

```
switch# show cert-util ldapcacert
List of ldap ca certificate files:
swLdapca.pem
```

Deleting LDAP CA certificates

The **no certutil ldapca** command deletes the LDAP CA certificates of all Active Directory servers. You must confirm that you want to delete the certificates.

```
switch# no certutil ldapca
Do you want to delete LDAP CA certificate? [y/n]:y
```

Configuring an Active Directory server on the client side

Each Brocade switch client must be individually configured to use Active Directory servers. You use the **ldap-server** command to specify the host server, authentication protocols, and other parameters. You can configure a maximum of five Active Directory servers on a Brocade switch for AAA service.

The parameters in the following table are associated with an Active Directory server that is configured on the switch.

TABLE 5 Active Directory parameters

Parameter	Description
host	IP address (v4) or Fully Qualified Domain name of the AD server. IPv6 is supported for Windows 2008 AD server only. The maximum supported length for the host name is 40 characters.
port	TCP port used to connect the AD server for authentication. The valid port range is 1024 through 65535. The default port is 389.
timeout	Time to wait for a server to respond. The range is 1 through 60 seconds. The default value is 5 seconds.
retries	Number of unsuccessful attempts to be made to connect to an AD server before quitting. The valid range is 1 through 100. The default value is 5.
domain	Base domain name

A maximum of five LDAP/AD servers can be configured on a Brocade switch for authentication service.

Adding an LDAP server to the client server list

The following procedure configures an LDAP server on an ADAP client (Brocade switch).

1. In privileged EXEC mode, use the **configure terminal** command to enter global configuration mode.

```
switch# configure terminal
Entering configuration mode terminal
```

2. Use the **ldap-server-host** command to set the parameters for the LDAP server.

This command places you into the LDAP server configuration submenu where you can modify the server default settings.

```
switch(config)# ldap-server host 10.24.65.6 basedn sec.brocade.com port 3890
switch(config-ldap-server-10.24.65.6)#
```

3. Modify any settings, such as the domain name or retry limit, in this configuration mode (refer to the preceding table).

```
switch(config-ldap-server 10.24.65.6)# basedn security.brocade.com
switch(config-ldap-server 10.24.65.6)# timeout 8
switch(config-host-10.24.65.6)# retries 3
```

4. Confirm the LDAP settings with the **do show running-config ldap-server** command.

Attributes holding default values are not displayed.

```
switch(config-ldap-server-10.24.65.6)# do show running-config ldap-server host 10.24.65.6

ldap-server host 10.24.65.6
port      3890
basedn    security.brocade.com
retries   3
timeout   8
!
```

5. Use the **exit** command to return to the global configuration mode.

```
switch(config-ldap-server-10.24.65.6)# exit
```

6. Use the **no ldap-server** command to set an attribute back to the default value.

```
switch(config)# no ldap-server host 10.24.65.6 retries
```

Changing LDAP server parameters

Changing an LDAP server follows the same procedure as that noted for adding an LDAP server to the client server list. Enter the host IP address or host name, then enter the new values as required. Refer to [Adding an LDAP server to the client server list](#) on page 38.

```
switch# configure terminal
Entering configuration mode terminal
switch(config)# ldap-server host 10.24.65.6
switch(config-host-10.24.65.6)# domain security.brocade.com
```

Removing an LDAP server

The following example deletes an LDAP server entry from the switch LDAP server list.

1. In privileged EXEC mode, use the **configure terminal** command to enter global configuration mode

```
switch# configure terminal
Entering configuration mode terminal
```

2. Use the **no ldap-server** command to delete the LDAP server.

```
switch(config)# no ldap-server host 10.24.65.6
```

Importing an LDAP CA certificate

This procedure imports the LDAP CA certificate from the remote host to the switch.

1. Connect to the switch and log in using an account with admin role permissions.
2. In privileged EXEC mode, enter the **certutil import ldapca** command. Include the full path to the certificate on the host, specify SCP as the protocol, and include the IP address of the host.

```
switch# certutil import ldapca directory /usr/ldapcert/ file cacert.pem protocol SCP host
10.23.24.56 user jane password rbridge-id 3
password: ****
```

Deleting an LDAP CA certificate

This procedure deletes the LDAP CA certificates of all attached Microsoft Active Directory servers from the switch.

1. Connect to the switch and log in using an account with admin role permissions.
2. In privileged EXEC mode, enter the **no certutil ldapca** command.

```
switch# no certutil ldapca
Do you want to delete LDAP CA certificate? [y/n]:y
```

3. Enter **Y** to confirm that you want to delete the LDAP CA certificates.

Verifying LDAP CA certificates

To test whether an LDAP CA certificate has been imported on the switch, in privileged EXEC mode, enter the **no certutil ldapca** command and examine the message returned by the system. The command returns an error if there is no LDAP CA certificate on the switch. If an LDAP CA certificate exists on the switch, you are prompted to delete it. Enter **no certutil ldapcert** command to retain the certificate.

When no LDAP CA certificate is present

```
switch# no certutil ldapcert
% Error: LDAP CA certificate does not exist.
```

When an LDAP CA certificate exists on the switch

```
switch# no certutil ldapcert
List of swLdapca.pem files:
swLdapca.pem
```

Viewing the LDAP CA certificate

The following procedure allows you to view the LDAP CA certificate that has been imported on the switch.

1. Connect to the switch and log in using an account with admin role permissions.
2. In privileged EXEC mode, enter the **certutil import syslogca** command. Include the full path to the certificate on the host, specify SCP as the protocol, and include the IP address of the host.

Logical chassis cluster mode

To view the output in logical chassis cluster mode, enter **show cert-util ldapcert** followed by the desired RBridge ID. This example displays the certificate for RBridge ID 3.

```
switch# show cert-util ldapcert rbridge-id 3
```

Importing a syslog CA certificate

The following procedure imports the syslog CA certificate from the remote host to the switch.

1. Connect to the switch and log in using an account with admin role permissions.
2. In privileged EXEC mode, enter the **certutil import syslogca** command. Include the full path to the certificate on the host, specify SCP as the protocol, and include the IP address of the host.

Logical chassis cluster mode

```
switch# certutil import syslogca directory /usr/ldapcert/ file cacert.pem protocol SCP host 10.23.24.56
user jane password rbridge-id 3
password: ****
```

Deleting a syslog CA certificate

The following procedure deletes the syslog CA certificates of all attached Active Directory servers from the switch.

1. Connect to the switch and log in using an account with admin role permissions.
2. In Privileged EXEC mode, enter the **no certutil syslogca** command. You will be prompted to confirm that you want to delete the syslogca certificates.

Logical chassis cluster mode

This example deletes the syslogca certificates for RBridge ID 3 only.

```
switch# no certutil syslogca rbridge-id 3
Do you want to delete syslogca certificate? [y/n]:y
Warning: All the syslog CA certificates are deleted.
```

Verifying syslog CA certificates

To test whether a syslogCA certificate has been imported on the switch, in privileged EXEC mode, enter the **no certutil syslogca** command and examine the message returned by the system. The command returns an error if there is no syslog CA certificate on the switch. If a syslog CA certificate exists on the switch, you are prompted to delete it. Enter the **no certutil syslogcacert** command to retain the certificate.

When no syslog CA certificate is present

```
switch# no certutil syslogcacert
% Error: syslog CA certificate does not exist.
```


When a syslog CA certificate exists on the switch

```
switch# no certutil syslogcacert
Do you want to delete syslog CA certificate? [y/n]:n
```

Viewing the syslog CA certificate

The following procedure allows you to view the syslog CA certificate that has been imported on the switch.

1. Connect to the switch and log in using an account with admin role permissions.
2. In privileged EXEC mode, enter the **show cert-util syslogcacert** command.

Logical chassis cluster mode

This example displays the syslog CA certificates for rbridge-id 3 only.

```
switch# show cert-util syslogcacert rbridge-id 3
```

Configuring Active Directory groups on the client side

An Active Directory (AD) group defines access permissions for the LDAP server similar to Brocade roles. You can map an Active Directory group to a Brocade role with the **ldap-server maprole** command. The command confers all access privileges defined by the Active directory group to the Brocade role to which it is mapped.

A user on an AD server should be assigned a nonprimary group, and that group name should be either matched or mapped to one of the existing roles on the device.

After successful authentication, the user is assigned a role from a nonprimary group (defined on the AD server) based on the matched or mapped device role.

A user logging in to the device that is configured to use LDAP and has a valid LDAP user name and password will be assigned LDAP user privileges if the user is not assigned with any nonprimary group.

Mapping an Active Directory group to a switch role

In the following example, a Brocade user with the admin role inherits all privileges associated with the Active Directory (AD) Administrator group.

1. In privileged EXEC mode, use the **configure terminal** command to enter global configuration mode.

```
switch# configure terminal
Entering configuration mode terminal
```

2. Use the **ldap-server maprole** command to set the group information.

A maximum of 16 AD groups can be mapped to the switch roles.

```
switch(config)# ldap-server maprole group Administrator role admin
```

Removing the mapping of an Active Directory to a switch role

The following example removes the mapping between the Brocade admin role and the Active Directory (AD) Administrator group. A Brocade user with the admin role can no longer perform the operations associated with the AD Administrator group.

To unmap an AD group to a device role, perform the following steps from privileged EXEC mode.

1. Use the **configure terminal** command to enter global configuration mode.

```
switch# configure terminal
Entering configuration mode terminal
```

2. Use the **no ldap-server maprole** command to set the group information.

```
switch(config)# no ldap-server maprole group Administrator
```

Configuring the client to use LDAP/AD for login authentication

After you configured the switch LDAP server list, you must set the authentication mode so that ALDAP is used as the primary source of authentication. Refer to [Login authentication mode](#) on page 31 for information on how to configure the login authentication mode.

Clearing sessions on the client side

In Network OS 4.0 and later, you can use the **clear sessions** command to log out user sessions that are connected to a device. This command is not distributed across a cluster. If you are in VCS mode, you must use the RBridge ID of the node to log out the users connected to the individual nodes.

```
switch# clear sessions rbridge-id 3
This operation will logout all the user sessions. Do you want to continue (yes/no)?: y
```

Configuring an Active Directory server on the client side

The following high-level overview of server-side configuration for LDAP/AD servers indicates the steps needed to set up a user account. This overview is provided for your convenience only. All instructions involving Microsoft Active Directory can be obtained from www.microsoft.com or from your Microsoft documentation. Confer with your system or network administrator prior to configuration for any special needs your network environment may have.

Creating a user account on an LDAP/AD server

1. Create a user on the Microsoft Active Directory server.
2. Create a group. The group should either match with the user's Brocade switch role or you can map the role to the Brocade switch role with the **ldap-server maprole** command.
3. Associate the user with the group by adding the user to the group.
The user account configuration is complete.

Verifying the user account on the switch

1. Log in to the switch as a user with admin privileges.
2. Verify that the LDAP/AD server has an entry in the switch LDAP server list.

```
switch# show running-config ldap-server
```

3. In global configuration mode, set the login authentication mode on the switch to use LDAP only and verify the change.

```
switch# configure terminal
Entering configuration mode terminal
switch(config)# no aaa authentication login
switch(config)# aaa authentication login ldap
switch(config)# do
  show running-config aaa
aaa authentication login ldap
```

4. Log in to the switch using an account with valid LDAP/AD only credentials to verify that LDAP/AD is being used to authenticate the user.
5. Log in to the switch using an account with switch-local only credentials. The login should fail with an access denied message.

Configuring LDAP users on an AD server

1. Create a user.
 - a) Go to **Programs > Administrative Tools > Active directory Users and Computers**.
 - b) Add a user by completing the **Active directory Users and Computers** dialog box.
 - c) Save the account information.
 - d) From a command prompt, log in using the new user name and enter a password when prompted.
2. Create a group.
 - a) Go to **Programs > Administrative Tools > Active directory Users and Computers**.
 - b) Add a new group.
 - c) Save the group information.
3. Assign the group to the user.
 - a) Click on the user name.
 - b) From the **Properties** dialog box, click the **Member Of** tab and update the field with the group name. This group should either match the switch role or it must be mapped with the switch role on the Brocade switch. In this instance, Domain Users is the primary group and therefore should not be mapped with the switch role.

RADIUS Server Authentication

- [Understanding and configuring RADIUS..... 45](#)

Understanding and configuring RADIUS

The remote authentication dial-in user service (RADIUS) protocol manages authentication, authorization, and accounting (AAA) services centrally. The supported management access channels that integrate with RADIUS are serial port, Telnet, and SSH.

If you are in logical chassis cluster mode, the configuration is applied to all nodes in the cluster.

Authentication and accounting

When a Brocade device is configured with a set of RADIUS servers to be used for authentication, the device also sends accounting data to the RADIUS server implicitly.

When RADIUS authentication is implemented, the Brocade device consults a RADIUS server to verify user names and passwords. You can optionally configure RADIUS authorization, in which the Brocade device consults a list of commands supplied by the RADIUS server to determine whether a user can issue a command he or she has entered, as well as accounting, which causes the Brocade device to log information on a RADIUS accounting server when specified events occur on the device.

You can use a Remote Authentication Dial In User Service (RADIUS) server to secure the following types of access to the Brocade Layer 2 device or Layer 3 device:

- Telnet access
- SSH access
- Web management access
- Access to the Privileged EXEC level and CONFIG levels of the CLI

The only accounting events supported on Brocade VDX switches configured to use RADIUS are successful login and logout of the RADIUS user.

During the user authentication process, the device sends its IP address. When the device also has a Virtual IP address (in Brocade VCS Fabric mode), it still sends only its unique IP address to the RADIUS server.

NOTE

If the RADIUS server is not configured to support accounting, the accounting events sent by the device to the server are dropped.

Authorization

User authorization through the RADIUS protocol is not supported. The access control of RADIUS users is enforced by the Brocade role-based access control (RBAC) protocol at the device level. A RADIUS user should therefore be assigned a role that is present on the device using the Vendor Specific Attribute (VSA) *Brocade-Auth-Role*. After the successful authentication of the RADIUS user, the role of the user configured on the server is obtained. If the role cannot be obtained or if the obtained role is not present on the device, the user will assigned "user" role and a session is granted to the user with "user" authorization.

Account password changes

All existing mechanisms for managing device-local user accounts and passwords remain functional when the device is configured to use RADIUS. Changes made to the device-local database do not propagate to the RADIUS server, nor do the changes affect any account on the RADIUS server; therefore, changes to a RADIUS user password must be done on the RADIUS server.

RADIUS authentication through management interfaces

You can access the device through Telnet or SSH from either the Management interface or the data ports (TE interface or in-band). The device goes through the same RADIUS-based authentication with either access method.

Configuring server-side RADIUS support

With RADIUS servers, you should set up user accounts by their true network-wide identity, rather than by the account names created on a Brocade device. Along with each account name, you must assign appropriate device access roles. A user account can exist on a RADIUS server with the same name as a user on the device at the same time.

When logging in to a device configured with RADIUS, users enter their assigned RADIUS account names and passwords when prompted. Once the RADIUS server authenticates a user, it responds with the assigned device role and information associated with the user account information using a Brocade Vendor-Specific Attribute (VSA). An Authentication-Accept response without the role assignment automatically grants the "user" role.

NOTE

RADIUS requires that you configure both the client and the server.

Configuring a RADIUS server with Linux

FreeRADIUS is an open source RADIUS server that runs on Linux (all versions), FreeBSD, NetBSD, and Solaris. Download the package from www.freeradius.org and follow the installation instructions at the FreeRADIUS website.

You will need the following information to configure Brocade-specific attributes. Refer to the RADIUS product documentation for information on configuring and starting up a RADIUS server.

Adding the Brocade attribute to the RADIUS server configuration

For the configuration on a Linux FreeRADIUS server, define the values outlined in the following table in a vendor dictionary file named `dictionary.brocade`.

TABLE 6 dictionary.brocade file entries

Include	Key	Value
VENDOR	Brocade	1588

TABLE 6 dictionary.brocade file entries (continued)

Include	Key	Value
ATTRIBUTE	Brocade-Auth-Role	1 string Brocade

1. Create and save the file `$PREFIX/etc/raddb/dictionary.brocade` with the following information:

```
#
# dictionary.brocade
#
VENDOR Brocade 1588
#
# attributes
#
ATTRIBUTE          Brocade-Auth-Role          1          string          Brocade.
```

2. Open the master dictionary file `$PREFIX/etc/raddb/dictionary` in a text editor and add the line:

```
$INCLUDE dictionary.brocade
```

The file `dictionary.brocade` is located in the RADIUS master configuration directory and loaded for use by the RADIUS server.

Configuring a Brocade user account

When you use network information service (NIS) for authentication, the only way to enable authentication with the password file is to force the Brocade switch to authenticate using password authentication protocol (PAP); this requires the setting the `pap` option with the `radius-server host` command.

1. Open the `$PREFIX/etc/raddb/users` file in a text editor.
2. Add the user name and associated the permissions.

The user must log in using the permissions specified with `Brocade-Auth-Role`.

The following example configures an account called "jsmith" with admin permissions and a password "jspassword".

```
jsmith    Auth-Type := Local,
           User-Password == "jspassword",
           Brocade-Auth-Role = "admin"
```

NOTE

You must use double quotation marks around the password and role.

Configuring RADIUS server support with a Windows server

Step-by-step instructions for installing and configuring Internet Authentication Service (IAS) with Microsoft Windows server 2008 (or earlier versions, Windows 2003 or 2000) can be obtained from www.microsoft.com or your Microsoft documentation. Confer with your system or network administrator prior to configuration for any special needs your network environment may have.

Use the following information to configure the Internet Authentication Service for a Brocade switch.

NOTE

This is not a complete presentation of steps.

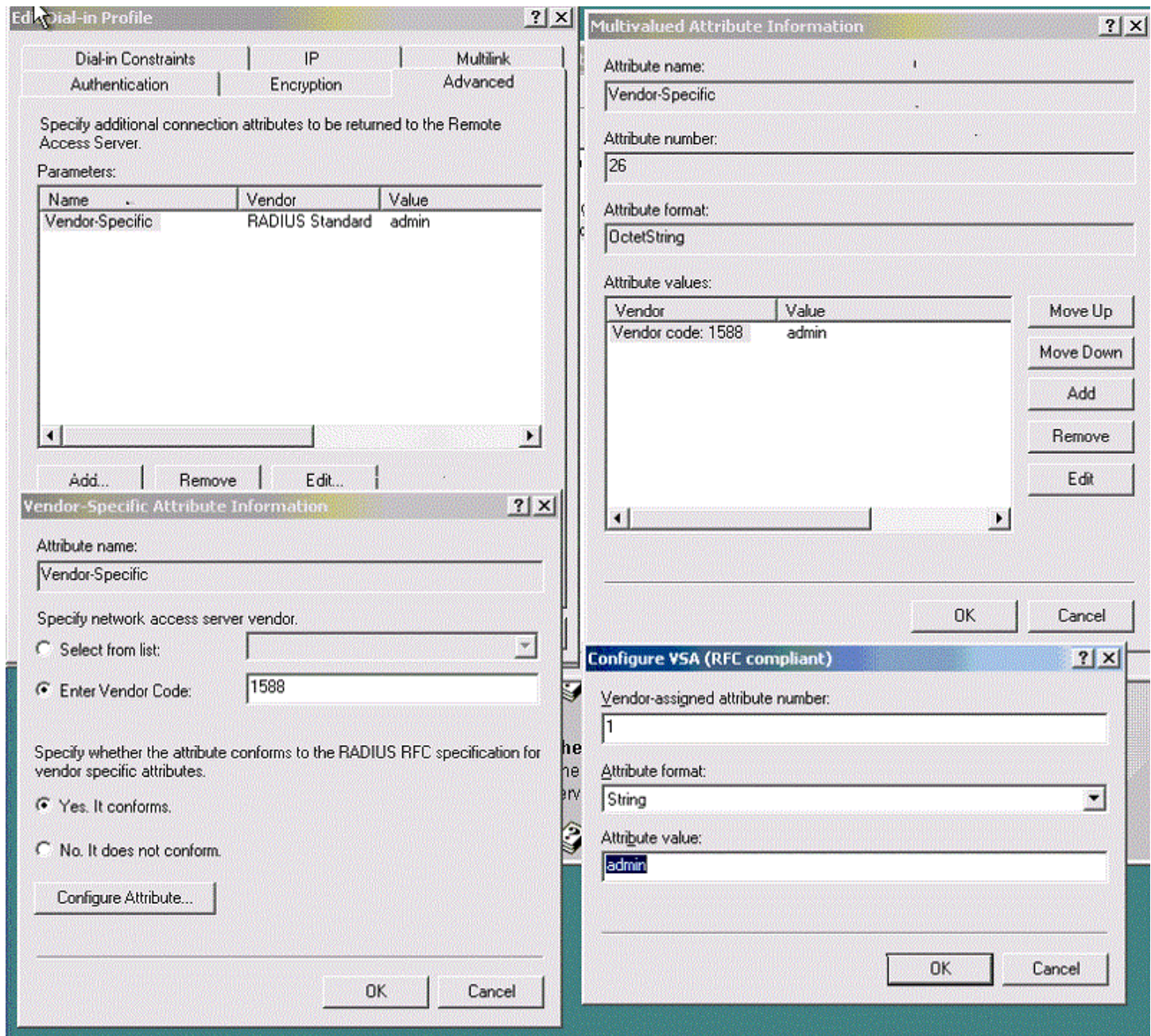
1. In the **New RADIUS Client** window, choose **RADIUS Standard** from the **Client-Vendor** menu.

2. Configure the **Dial-in Profile** dialog box as follows:
 - a) Select the **Advanced** tab.
 - b) Scroll to the bottom of the RADIUS Standard list, select **Vendor-Specific**, and click **Add**.
The **Multivalued Attribute Information** dialog box appears.
 - c) Click **Add** in the **Multivalued Attribute Information** dialog box.
The **Vendor-Specific Attribute Information** dialog box appears.
 - d) Enter the Brocade vendor code value of **1588**.
 - e) Select **Yes. It conforms.** and then click **Configure Attribute**.
The **Configure VSA (RFC compliant)** dialog box appears.
 - f) In the **Configure VSA (RFC compliant)** dialog box, enter the following values and click **OK**:
 - Vendor-assigned attribute number—Enter the value **1**.
 - Attribute format—Enter the value **String**.

The RADIUS server is now configured.

The following image shows the different screens configured in this task.

FIGURE 1 Windows server VSA configuration



Configuring client-side RADIUS support

Each Brocade device client must be individually configured to use RADIUS servers. You use the **radius-server** command to specify the server IP address, authentication protocols, and other parameters. You can configure a maximum of 5 RADIUS servers on a Brocade device for AAA service.

NOTE

RADIUS requires that you configure both the client and the server.

The following table describes the parameters associated with a RADIUS server that is configured on the device.

TABLE 7 RADIUS server parameters

Parameter	Description
host	IP address (IPv4 or IPv6) or host name of the RADIUS server. Host name requires prior DNS configuration. The maximum supported length for the host name is 40 characters.
auth-port	The user datagram protocol (UDP) port used to connect the RADIUS server for authentication. The port range is 0 through 65535; the default port is 1812.
protocol	The authentication protocol to be used. Options include CHAP, PAP, and PEAP. The default protocol is CHAP. IPv6 hosts are not supported if PEAP is the configured protocol.
key	The shared secret between the device and the RADIUS server. The default value is "sharedsecret." The key cannot contain spaces and must be from 8 through 40 characters in length. Empty keys are not supported.
retries	The number of attempts permitted to connect to a RADIUS server. The range is 0 through 100, and the default value is 5.
timeout	Time to wait for a server to respond. The range is 1 through 60 seconds. The default value is 5 seconds.
encryption-level	Whether the encryption key should be stored in clear-text or in encrypted format. Default is 7 (encrypted). Possible values are 0 or 7, where 0 represents store the key in clear-text format and 7 represents encrypted format.

NOTE

If you do not configure the **key** attribute, the authentication session will not be encrypted. The value of the **key** attribute must match the value configured in the RADIUS configuration file; otherwise, the communication between the server and the device fails.

Refer also to:

- [Adding a RADIUS server to the client server list](#) on page 50
- [Modifying the client-side RADIUS server configuration](#) on page 51
- [Configuring the client to use RADIUS for login authentication](#) on page 52

Adding a RADIUS server to the client server list

You must configure the Domain Name System (DNS) server on the switch prior to adding the RADIUS server with a domain name or a host name. Without the DNS server, name resolution of the RADIUS server fails and therefore the add operation fails. Use the **ip dns** command to configure the DNS server.

NOTE

When a list of servers is configured on the switch, failover from one server to another server happens only if a RADIUS server fails to respond; it does not happen when user authentication fails.

1. In privileged EXEC mode, use the **configure terminal** command to enter global configuration mode.

```
switch# configure terminal
Entering configuration mode terminal
```

2. Enter the **radius-server** command with the specified parameters.

```
switch(config)# radius-server host 10.38.37.180 protocol pap key "new#virgo*secret" timeout 10
```

Once you run this command, you are placed into the AAA server configuration submode where you can specify additional parameters.

3. Enter the **exit** command to return to global configuration mode.

```
switch(config-host-10.38.37.180)# exit
```

4. Enter the **do show running-config radius-server host host_IP** command to verify the configuration.

```
switch# show running-config radius-server host 10.38.37.180
radius-server host 10.38.37.180
protocol pap
key "new# virgo*secret"
timeout 10
```

Modifying the client-side RADIUS server configuration

1. In privileged EXEC mode, use the **configure terminal** command to enter global configuration mode.

```
switch# configure terminal
Entering configuration mode terminal
```

2. Enter the **radius-server host** command with the help option (?) to display the configured RADIUS servers.

```
switch(config)# radius-server ?
Possible completions:
<hostname: IP Address or Hostname of this RADIUS server>
10.38.37.180
10.24.65.6
```

3. Enter the **radius-server host** command with the IP address of the server you want to modify.

```
switch(config)# radius-server host 10.38.37.180
```

After you run this command you are placed into the RADIUS server configuration submode where you can specify the parameters you want to modify.

4. Enter the parameters and values you want to change.

```
switch(config-host-10.38.37.180)# key "changedsec"
switch(config-host-10.38.37.180)# timeout 3
```

5. Enter the **do show running-config radius-server** command to verify the configuration.

NOTE

This command does not display default values.

```
switch(config)# do show running-config radius-server host 10.24.65.6
radius-server host 10.24.65.6
protocol pap
key changedsec
timeout 3
```

NOTE

The **no radius-server host** command removes the server configuration from the list of configured RADIUS servers. When used with a specified parameter, the command sets the default value of that parameter.

Configuring the client to use RADIUS for login authentication

After you configured the client-side RADIUS server list, you must set the authentication mode so that RADIUS is used as the primary source of authentication. Refer to [Login authentication mode](#) on page 31 for information on how to configure the login authentication mode.

TACACS+ Server Authentication

- Understanding and configuring TACACS+ 53

Understanding and configuring TACACS+

The Terminal Access Controller Access-Control System Plus (TACACS+) is an AAA server protocol that uses a centralized authentication server and multiple network access servers or clients. With TACACS+ support, management of Brocade devices seamlessly integrates into these environments. Once configured to use TACACS+, a Brocade device becomes a network access server.

If you are in logical chassis cluster mode, the configuration is applied to all nodes in the cluster.

TACACS+ authorization

The TACACS+ server is used only for authentication and accounting. Authorization is enforced by the Brocade role-based access control (RBAC) protocol at the device level. The same role should be assigned to a user configured on the TACACS+ server and configured on the device. If the device fails to get the user's role from the TACACS+ server after successful authentication, or if the role does not match any of the roles present on the device, the **user** role is assigned by default. Thereafter, the **brcd-role** is the key used to set the role from the TACACS+ server is used for RBAC.

TACACS+ authentication through management interfaces

You can access the device through the serial port, or through Telnet or SSH from either the management interface or the data ports (TE interface or in-band). The device goes through the same TACACS+-based authentication with either access method.

Supported TACACS+ packages and protocols

Brocade supports the following TACACS+ packages for running the TACACS+ daemon on remote AAA servers:

- Free TACACS+ daemon. You can download the latest package from www.shrubbery.net/tac_plus.
- ACS 5.3
- ACS 4.2

The TACACS+ protocol v1.78 is used for AAA services between the Brocade switch client and the TACACS+ server.

The authentication protocols supported for user authentication are Password Authentication Protocol (PAP) and Challenge Handshake Authentication Protocol (CHAP).

TACACS+ configuration components

Configuring TACACS+ requires configuring TACACS+ support on the client (including optional accounting), as well as configuring TACACS+ on the server. Support for mixed environments may also be required.

Configuring the client for TACACS+ support

Each Brocade device client must be individually configured to use TACACS+ servers. You use the **tacacs-server** command to specify the server IP address, authentication protocols, and other parameters. You can configure a maximum of five TACACS+ servers on a Brocade device for AAA service.

The parameters in the following table are associated with a TACACS+ server that is configured on the device.

TABLE 8 TACACS+ server parameters

Parameter	Description
host	IP address (IPv4 or IPv6) or domain/host name of the TACACS+ server. Host name requires prior DNS configuration. The maximum supported length for the host name is 40 characters.
port	The TCP port used to connect the TACACS+ server for authentication. The port range is 1 through 65535; the default port is 49.
protocol	The authentication protocol to be used. Options include CHAP and PAP. The default protocol is CHAP.
key	The shared secret between the device and the TACACS+ server. The default value is "sharedsecret." The key cannot contain spaces and must be from 8 through 40 characters in length. Empty keys are not supported.
retries	The number of attempts permitted to connect to a TACACS+ server. The range is 0 through 100, and the default value is 5.
timeout	The maximum amount of time to wait for a server to respond. Options are from 1 through 60 seconds, and the default value is 5 seconds.
encryption-level	Whether the encryption key should be stored in clear-text or in encrypted format. Default is 7 (encrypted). Possible values are 0 or 7, where 0 represents store the key in clear-text format and 7 represents encrypted format.

NOTE

If you do not configure the **key** attribute, the authentication session will not be encrypted. The value of **key** must match with the value configured in the TACACS+ configuration file; otherwise, the communication between the server and the device fails.

Refer also to:

- [Adding a TACACS+ server to the client server list](#) on page 54
- [Modifying the client-side TACACS+ server configuration](#) on page 55
- [Configuring the client to use TACACS+ for login authentication](#) on page 56
- [Configuring TACACS+ accounting on the client side](#) on page 56

Adding a TACACS+ server to the client server list

Prior to adding the TACACS+ server with a domain name or a host name, you must configure the Domain Name System (DNS) server on the device. Without the DNS server, the TACACS+ server name resolution fails and therefore the add operation fails. Use the **ip dns** command to configure the DNS server.

NOTE

When a list of servers is configured, failover from one server to another server happens only if a TACACS+ server fails to respond; it does not happen when user authentication fails.

The following procedure adds a TACACS+ server host in IPv6 format.

1. In the privileged EXEC mode, enter **configure terminal** to enter the global configuration mode.

```
switch# configure terminal
Entering configuration mode terminal
```

2. Enter **tacacs-server** and specify the server IP address.

```
switch(config)# tacacs-server host fec0:60:69bc:94:211:25ff:fec4:6010
```

Upon execution of the command you are placed into the TACACS server configuration submenu where you can specify additional parameters.

3. Specify the additional parameters.

This example specifies the CHAP protocol key.

```
switch(config-tacacs-server-fec0:60:69bc:94:211:25ff:fec4:6010)# protocol chap key
"new#hercules*secret"
switch(config-tacacs-server-fec0:60:69bc:94:211:25ff:fec4:6010)# exit
switch(config)# do show running-config tacacs-server fec0:60:69bc:94:211:25ff:fec4:6010
tacacs-server host fec0:60:69bc:94:211:25ff:fec4:6010 key new# Hercules*secret
```

4. Enter **exit** to return to the global configuration mode.

```
switch(config-tacacs-server-fec0:60:69bc:94:211:25ff:fec4:6010)# exit
```

5. Enter **do show running-config tacacs-server host server_address** to verify the configuration.

```
switch(config)# do show running-config tacacs-server fec0:60:69bc:94:211:25ff:fec4:6010
tacacs-server host fec0:60:69bc:94:211:25ff:fec4:6010
key new# Hercules*secret
```

Modifying the client-side TACACS+ server configuration

1. In privileged EXEC mode, enter **configure terminal** to change to global configuration mode.

```
switch# configure terminal
Entering configuration mode terminal
```

2. Enter **tacacs-server host** with the help option (?) to display the configured server IP addresses.

```
switch(config)# tacacs-server host ?
fec0:60:69bc:94:211:25ff:fec4:6010
```

3. Enter **tacacs-server host** followed by the address of the server you wish to modify.

```
switch(config)# tacacs-server host fec0:60:69bc:94:211:25ff:fec4:6010
```

Upon execution of the command you are placed into the TACACS server configuration submenu where you can specify the parameters you want to modify.

4. Specify the additional parameters.

```
switch(config-tacacs-server-fec0:60:69bc:94:211:25ff:fec4:6010)# key "changedsec" retries 100
```

5. Enter **exit** to return to the global configuration mode.

```
switch(config-tacacs-server-fec0:60:69bc:94:211:25ff:fec4:6010)# exit
```

6. Enter **do show running-config tacacs-server server_address** to verify the configuration.

This command does not display default values.

```
switch(config)# do show running-config tacacs-server fec0:60:69bc:94:211:25ff:fec4:6010
tacacs-server host fec0:60:69bc:94:211:25ff:fec4:6010
key          changedesc
retries     100!
```

The **no tacacs-server host** command removes the server configuration from the list of configured RADIUS servers. If the TACACS server being deleted is the last one in the list and authentication mode is set to **tacacs+**, deletion of the server from the switch configuration is denied. When used with a specified parameter, the command sets the default value of that parameter.

Configuring the client to use TACACS+ for login authentication

After you configured the client-side TACACS+ server list, you must set the authentication mode so that TACACS+ is used as the primary source of authentication. refer to [Login authentication mode](#) on page 31 for information on how to configure the login authentication mode.

Configuring TACACS+ accounting on the client side

Once the fundamentals of TACACS+ authentication support are configured on the client, a variety of options are available for tracking user activity.

Client-side TACACS+ accounting overview

The TACACS+ protocol supports accounting as a function distinctly separate from authentication. You can use TACACS+ for authentication only, for accounting only, or for both. With a TACACS+ server you can track user logins and the commands users execute during a login session by enabling login accounting, command accounting, or both.

If you are in logical chassis cluster mode, the configuration is applied to all nodes in the cluster.

- When login accounting is enabled, the device sends a TACACS+ start accounting packet with relevant attributes to the configured TACACS+ server when the user logs in, and a stop accounting packet when the session terminates.
- When command accounting is enabled, the device sends a TACACS+ stop accounting packet to the server when the command execution completes. No TACACS+ start accounting packet is sent for command accounting. Most configuration commands, **show** commands and non-configuration commands such as **firmware download** will be tracked. Commands received through the NetConf interface will also be tracked.

If a TACACS+ server is used for both authentication and accounting, the device first attempts to connect to the TACACS+ server that was successfully used for authentication when sending accounting packets to the server. If the TACACS+ server cannot be reached, the device attempts to send the packets to the next server on the list. Note that there is no fail back in this case. When the first TACACS+ server becomes reachable again, the accounting packets continue to be sent to the second TACACS+ server.

If authentication is performed through some other mechanism, such as the device-local database, a RADIUS, or an LDAP server, the device will attempt to send the accounting packets to the first configured TACACS+ server. If that server is unreachable, the device will attempt to send the accounting packets to subsequent servers in the order in which they are configured.

Conditions for conformance

- Only login and command accounting is supported. System event accounting is not supported.

- You can use a TACACS+ server for accounting regardless of whether authentication is performed through RADIUS, LDAP, TACACS+, or the device-local user database. The only precondition is the presence of one or more TACACS+ servers configured on the device.
- No accounting can be performed if authentication fails.
- In command accounting, commands with partial timestamp cannot be logged. For example, a **firmware download** command issued with the **reboot** option will not be accounted for, because there is no timestamp available for completion of this command.

Firmware downgrade considerations

Before downgrading to a version that does not support TACACS+ accounting, you must disable both login and command accounting or the firmware download will fail with an appropriate error message.

Configuring TACACS+ accounting on the client

By default, accounting is disabled on the TACACS+ client (the device) and you must explicitly enable the feature. Enabling command accounting and login accounting on the TACACS+ client are two distinct operations. To enable login or command accounting, at least one TACACS+ server must be configured. Similarly, if either login or command accounting is enabled, if it is the only server in the list, you cannot remove a TACACS+ server.

Enabling login accounting

The following procedure enables login accounting on a switch where accounting is disabled.

1. In privileged EXEC mode, use the **configure terminal** command to enter global configuration mode.

```
switch# configure terminal
Entering configuration mode terminal
```

2. Enter the **aaa accounting default exec start-stop tacacs+** command to enable login accounting.

```
switch(config)# aaa accounting exec default start-stop tacacs+
```

3. Enter **exit** to return to privileged EXEC mode.

```
switch(config)# exit
```

4. Enter the **show running-config aaa accounting** command to verify the configuration.

```
switch(config)# show running-config aaa accounting
aaa accounting exec default start-stop tacacs+
aaa accounting commands default start-stop tacacs+
```

Enabling command accounting

The following procedure enables login accounting on a switch where login accounting is enabled and command accounting is disabled.

1. In privileged EXEC mode, enter **configure terminal** to enter global configuration mode.

```
switch# configure terminal
Entering configuration mode terminal
```

2. Enter **aaa accounting default command start-stop tacacs+** to enable command accounting.

```
switch(config)# aaa accounting command default start-stop tacacs+
```

3. Enter **exit** to return to privileged EXEC mode.

```
switch(config)# exit
```

4. Enter **show running-config aaa accounting** to verify the configuration.

```
switch# show running-config aaa accounting
aaa accounting exec default start-stop none
aaa accounting commands default start-stop tacacs+
```

Disabling accounting

You have two options to disable accounting, either by using the **aaa accounting** command, with the **none** option or by using the **no** form of the command. Both variants are functionally equivalent. You must perform the disable operation separately for login accounting and for command accounting. The operation is performed in the global configuration mode.

This example shows two ways of disabling command accounting. The commands are executed in the global configuration mode.

```
switch(config)# aaa accounting commands default start-stop none
switch(config)# no aaa accounting commands default start-stop
```

This example shows two ways of disabling login accounting.

```
switch(config)# aaa accounting exec default start-stop none
switch(config)# no aaa accounting exec default start-stop
```

Viewing the TACACS+ accounting logs

The following excerpts from TACACS+ accounting logs exemplify typical success and failure cases for command and login accounting. These examples were taken from the free TACACS+ server. The order of the attributes may vary depending on the server package, but the values are the same. The location of the accounting logs depend on the server configuration.

Example: Command accounting

The following example record shows the successful execution of the **username** command by the admin user.

```
<102> 2012-04-09 15:21:43 4/9/2012 3:21:43 PM NAS_IP=10.17.37.150 Port=0 rem_addr=Console User=admin
Flags=Stop task_id=1 timezone=Etc/GMT+0 service=shell priv-lvl=0 Cmd=username Stop_time=Mon Apr 9 09:43:56
2012
Status=Succeeded
```

The following record shows the failed execution of the **radius-server** command by the admin user due to an invalid host name or server IP address.

```
<102> 2012-04-09 14:19:42 4/9/2012 2:19:42 PM NAS_IP=10.17.37.150 Port=0 rem_addr=Console User=admin
Flags=Stop task_id=1 timezone=Etc/GMT+0 service=shell priv-lvl=0 Cmd=radius-server Stop_time=Mon Apr 9
08:41:56 2012
Status=% Error: Invalid host name or IP address
```

Example: Login (EXEC) accounting

The following example record shows the successful login of the trial user.

```
<102> 2012-05-14 11:47:49 5/14/2012 11:47:49 AM NAS_IP=10.17.46.42 Port=/dev/ttyS0 rem_addr=Console
User=trial Flags=Start task_id=1 timezone=Asia/Kolkata service=shell
```

Example: The following example record shows the successful logout of the trial user.

```
<102>2012-05-14 11:49:52 5/14/2012 11:49:52 AM NAS_IP=10.17.46.42 Port=/dev/ttyS0 rem_addr=console
User=trial Flags=Stop task_id=1 timezone=Asia/Kolkata service=shell elapsed_time=123 reason=admin reset
```

Configuring TACACS+ on the server side

Step-by-step instructions for installing and configuring can be obtained from www.cisco.com. Confer with your system or network administrator prior to configuration for any special needs your network environment may have.

Server-side user account administration overview

With TACACS+ servers, you should set up user accounts by their true network-wide identity, rather than by the account names created on a Brocade device. Along with each account name, you must assign appropriate device access roles. A user account can exist on TACACS+ server with the same name as a user on the device at the same time.

When logging in to a device configured with a TACACS+ server, users enter their assigned TACACS+ account names and passwords when prompted. Once the TACACS+ server authenticates a user, it responds with the assigned device role and information associated with the user account information using a Brocade Vendor-Specific Attribute (VSA). An Authentication-Accept response without the role assignment automatically grants the "user" role.

User accounts, protocols passwords, and related settings are configured by editing the server configuration files. The following configuration examples are based on the documentation provided by Cisco for its TACACS+ daemon users.

Establishing a server-side user account

The following example assigns the user "Mary" the Brocade role of "vlanadmin" and different passwords depending on whether the CHAP or the PAP protocol is used. In the following example, the `brcd-role` attribute is mandatory, which works in a Brocade-only environment. In a mixed vendor environment, the `brcd-role` attribute must be set to optional. Refer to [Configuring TACACS+ for a mixed vendor environment](#) on page 60 for more information.

```
user = Mary {
  chap = cleartext "chap password"
  pap = cleartext "pap password"
  service = exec {
    brcd-role = vlanadmin;
  }
}
```

The following example assigns the user "Agnes" a single password for all types of login authentication.

```
user = Agnes {
  global = cleartext "Agnes global password"
}
```

Alternatively, a user can be authenticated using the `/etc/passwd` file. Configure the account as shown in the following example.

```
user = fred {
  login = file /etc/passwd
}
```

Changing a server-side TACACS+ account password

Changing a TACACS+ user password is done on the server by editing the TACACS+ server configuration file.

Defining a server-side TACACS+ group

A TACACS+ group or role can contain the same attributes as the users. By inference, all the attributes of a group can be assigned to any user to whom the group is assigned. The TACACS+ group, while functionally similar to the Brocade role concept, has no relation with the value of "brcd-role" attribute.

The following example defines a TACACS+ group.

```
group = admin {
# group admin has a cleartext password which all members share
# unless they have their own password defined
chap = cleartext "my$parent$chap$password"
}
```

The following example assigns the user "Brocade" with the group "admin".

```
user = Brocade {
member = admin
pap = cleartext "pap password"
}
```

Setting a server-side account expiration date

You can set an expiration date for an account by using the "expires" attribute in the TACACS+ server configuration file. The expiration date has the format "MMM DD YYYY"

```
user = Brocade {
member = admin
expires = "Jan 1 2011"
pap = cleartext "pap password"
}
```

Configuring a TACACS+ server key

The TACACS+ server key is the shared secret used to secure the messages exchanged between the Brocade switch and the TACACS+ server. The TACACS+ server key must be configured on both the TACACS+ server and the client Brocade switch. Only one key is defined per server in the TACACS+ server configuration file. The key is defined as follows:

```
key = "vcs shared secret"
```

Configuring TACACS+ for a mixed vendor environment

Network OS uses Role Based Access Control (RBAC) to authorize access to system objects by authenticated users. In AAA environments users may need to be authorized across Brocade and non-Brocade platforms. You can use TACACS+ to provide centralized AAA services to multiple network access servers or clients. To use TACACS+ services in multi-vendor environments, you must configure the Attribute-Value Pair (AVP) argument to be optional as shown in the example.

```
brcd-role*admin
```

The Network OS device sends the optional argument 'brcd-role' in the authorization request to the TACACS+ service. Most TACACS+ servers are programmed to return the same argument in response to the authorization request, If 'brcd-role' is configured as an optional argument, it is sent in the authorization request and Network OS users are able to successfully authorize with all TACACS+ services in a mixed-vendor environment.

Example: Configuring optional arguments in tac_plus

The following is a specific example for tac_plus package. Syntax for other packages may differ.

In the example, the mandatory attribute `priv-lvl=15` is set to allow Cisco to authenticate. The optional `brcd-role = admin` argument is added to the `tac_plus.conf` file and allows Brocade VDX switches to authenticate.

The following example configures a user with the optional attribute value pair, `brcd-role = admin`. A Brocade user must match both the *username* and *usergroup* to authenticate successfully.

```
user = <username> {
  default service = permit
  service = exec {
    priv-lvl=15
    optional brcd-role = admin
  }
}
```

or

```
group = <usergroup> {
  default service = permit
  service = exec {
    priv-lvl=15
    optional brcd-role = admin
  }
}
user = <username> {
  Member = <usergroup>
}
```


HTTPS Certificates

- [HTTPS certificate overview.....](#) 63
- [Configuring HTTPS certificates.....](#) 63
- [Disabling HTTPS certificates.....](#) 65
- [Enabling HTTPS service.....](#) 66
- [Disabling HTTPS service.....](#) 66

HTTPS certificate overview

In public key cryptography each device has a pair of keys: a public key and a private key. These are typically numbers that are chosen to have a specific mathematical relationship.

The private key can be used to create a digital signature for any piece of data using a digital signature algorithm. This typically involves taking a cryptographic hash of the data and operating on it mathematically using the private key. Any device with the public key can check that this signature was created using the private key and the appropriate signature validation algorithm.

Brocade Network OS supports DSA, RSA and ECDSA encryption keys for HTTPS cryptography. You can generate key pairs, create trust points, and then authenticate and enroll the key pairs into the trust points to obtain the identity certificates.

Configuring HTTPS certificates

In order to support HTTPS, the switch needs to be configured with an Identity certificate. This task generates the key pair, then configures the trust points and certificates required for HTTPS security.

When the Apache (web server) boots, it enables HTTPS service only in the presence of HTTPS crypto certificates.

HTTP and HTTPS are mutually exclusive.

The labels for the trust point and the key pair have to be consistent throughout this process.

1. Enter Rbridge ID configuration mode.

```
switch(config)# rbridge-id 1
```

2. Generate a key pair (either RSA, ECDSA, or DSA) to sign and encrypt the security payload during the security protocol exchanges with the **crypto key** command.

```
switch(config-rbridge-id-1)# crypto key label k1 rsa modulus 2048
```

3. Configure a trusted Certificate Authority (CA) so that the imported identity certificate can be verified that it was issued by one of the locally trusted CAs with the **crypto ca** command.

```
switch(config-rbridge-id-1)# crypto ca trustpoint t1  
switch(config-ca-t1)#
```

4. Associate the key pair to the trust point with the **keypair** command. The association between the trust point, key pair, and identity certificate is valid until it is explicitly removed by deleting the certificate, key pair, or trust point.

```
switch(config-ca-t1)# keypair k1
```

- Return to privileged EXEC mode with the **end** command.

```
switch(config-ca-t1)# end
```

- You must authenticate the VDX device to the CA by obtaining the self-signed certificate of the CA with the **crypto ca authenticate** command. Because the certificate of the CA is self-signed, the public key of the CA should be manually authenticated by contacting the CA administrator to compare the fingerprint of the CA certificate.

```
switch# crypto ca authenticate t1 protocol SCP host 10.70.12.102 user fvt directory /users/home/
crypto file cacert.pem
Password: *****
```

- Export the enrollment certificate to the location specified for the remote host with the **crypto ca enroll** command.

```
switch# crypto ca enroll t1 country US state CA locality SJ organization BRC orgunit SFI common
myhost.brocade.com protocol SCP host 10.70.12.102 user fvt directory /proj/crypto
Password: *****
```

- Import the identity certificate from the trust point CA with the **crypto ca import** command. This installs the identity certificate on the device.

```
switch# crypto ca import t1 certificate protocol SCP host 10.70.12.102 user fvt directory /users/
home/crypto file cacert.pem
Password: *****
```

- Save the running configuration to the startup configuration with the **copy** command.

```
switch#copy running-config startup-config
```

- Confirm the configuration with the **show** commands in the example below.

```
switch# show crypto key mypubkey
rbridge-id:1
key type: rsa
key label: k1
key size: 2048
```

```
switch# show crypto ca trustpoint
rbridge-id:1
trustpoint: t1; key-pair: k1
certificate: none
CA certificate:
SHA1 Fingerprint=76:5B:D4:2C:CB:54:FE:6B:C5:E0:E3:FD:11:B0:88:70:80:12:C6:63
Subject: C=US, ST=CA, L=SJ, O=BR, OU=SF, CN=SOUND/emailAddress=sravi
Issuer: C=US, ST=CA, L=SJ, O=BR, OU=SF, CN=SOUND/emailAddress=sravi
Not Before: Sep 19 20:56:49 2014 GMT
Not After : Oct 19 20:56:49 2014 GMT
purposes: sslserver
```

```
switch# show running-config rbridge-id crypto
rbridge-id 1
crypto key label k1 rsa modulus 2048
crypto ca trustpoint t1
keypair k1
```

- The HTTP server (either web server or apache server) must be restarted to activate the HTTPS service. Use only one of the following methods:

- If HTTP is in enable state (by default HTTP is enabled), then execute **http server shutdown**, followed by **no http server shutdown** to enable HTTPS.
- If HTTP is in disable state, then execute **no http server shutdown**.
- Reboot the switch.
- Force an HA failover.

Disabling HTTPS certificates

Disables key pairs and trust points for HTTPS cryptography certificates, which disables the HTTPS security protocol.

To shutdown the HTTPS service without disabling the HTTPS certificates, execute the **http server shutdown** command.

When the Apache (web server) boots, it enables HTTPS service only in the presence of HTTPS crypto certificates.

HTTP and HTTPS are mutually exclusive.

NOTE

HTTPS certificates must be configured and enabled for web service to function on the device.

1. Delete the identity switch certificate with the **no crypto ca import** command.

```
switch# no crypto ca import t1 certificate

switch# show crypto ca certificates
rbridge-id:1
Trustpoint: t1
certificate: none
CA certificate:
SHA1 Fingerprint=76:5B:D4:2C:CB:54:FE:6B:C5:E0:E3:FD:11:B0:88:70:80:12:C6:63
Subject: C=US, ST=CA, L=SJ, O=BR, OU=SF, CN=SOUND/emailAddress=sravi
Issuer: C=US, ST=CA, L=SJ, O=BR, OU=SF, CN=SOUND/emailAddress=sravi
Not Before: Sep 19 20:56:49 2014 GMT
Not After : Oct 19 20:56:49 2014 GMT
purposes: sslserver
```

2. Unauthenticate the trust point with the **no crypto ca authenticate** command.

```
switch# no crypto ca authenticate t1

switch# show crypto ca certificates
rbridge-id:1
Trustpoint: t1
certificate: none
CA certificate: none
```

3. Disassociate the trust point from the key pair with the **no keypair** command.

```
switch(config-rbridge-id-1)# crypto ca trustpoint t1
switch(config-ca-t1)#no keypair
switch(config-ca-t1)# do show running-config rbridge-id crypto
rbridge-id 1
crypto key label k1 rsa modulus 2048
crypto ca trustpoint t1
!
!
switch(config-ca-t1)# do show crypto ca trustpoint
rbridge-id:1
trustpoint: t1; key-pair: none
```

4. Delete the trust point with the **no crypto ca trustpoint** command.

```
switch(config-rbridge-id-1)# no crypto ca trustpoint t1

switch(config-ca-t1)# do show running-config rbridge-id crypto
rbridge-id 1
crypto key label k1 rsa modulus 2048
!
switch# show crypto ca trustpoint
rbridge-id:1
trustpoint: none; key-pair: none
```

5. Delete the key pair with the **no crypto key** command.

```
switch(config-ca-t1)# exit
switch(config-rbridge-id-1)#no crypto key label k1
switch(config-rbridge-id-1)# do show running-config rbridge-id crypto
% No entries found.
```

```
switch(config-rbridge-id-1)# do show crypto key mypubkey
rbridge-id:1
key type: none
key label: none
key size: none
```

6. Return to privileged EXEC mode with the **exit** command.

```
switch(config-ca-t1)# exit
```

7. Save the running configuration to the startup configuration with the **copy** command.

```
switch#copy running-config startup-config
```

Enabling HTTPS service

After installing the HTTPS certificates, the web server (also known as the apache server) must be restarted to configure the HTTPS service. By default, the web service is running when the device boots.

The HTTPS certificates must be installed.

The web service can be started using one of the following mechanisms:

- Restart the web service with the **http server shutdown** command, followed by the **no http server shutdown** command.
- Reboot the entire device.
- Commit an HA failover, if that option is available.

Disabling HTTPS service

The HTTPS service is disabled with the **http server shutdown** command.

Configuring and Managing ACLs

• ACL overview.....	67
• Configuring and managing Layer 2 (MAC) ACLs.....	68
• Configuring and managing Layer 3 (IPv4 and IPv6) ACLs.....	74
• ACL Show and Clear commands.....	83

ACL overview

An access control list (ACL) is a container for rules that permit or deny network traffic based on criteria that you specify.

When a frame or packet is received on an interface, the device compares its header fields against the rules in ACLs applied to the interface. This comparison is done according to a rule sequence, which you can specify. Based on this comparison, the device either forwards or drops the frame or packet.

The benefits of ACLs include the following:

- Provide a measure of security.
- Save network resources by classifying traffic and blocking unwanted users.
- Reduce the chance of denial of service (DOS) attacks.
- Reduce debug output.

Regarding the range of filtering options, there are two types of ACLs:

- *Standard ACLs* — Permit or deny traffic according to source address only.
- *Extended ACLs* — Permit or deny traffic according to source and destination addresses, as well as other parameters. For example, in an extended ACL, you can also filter by one or more of the following:
 - Port name or number
 - Protocol, for example TCP or UDP
 - TCP flags

Application of ACLs to device interfaces

An ACL does not start filtering traffic until you apply it to a device interface.

Layer 2 (MAC) ACLs are supported on the following user-interface types:

- Physical interfaces (<N>-gigabit Ethernet)—in switchport mode
- Logical interfaces (LAGs)—in switchport mode
- VLANs
- Overlay gateways

Layer 3 (IPv4 and IPv6) ACLs are supported on the following interface types:

- User Interfaces
 - Physical interfaces (<N>-gigabit Ethernet)
 - Logical interfaces (LAGs)
 - Virtual Ethernet (VE) interfaces
 - Overlay gateways

- Management interfaces
 - All supported management interfaces

On most interfaces, you can apply ACLs to filter both incoming traffic and outgoing traffic. On the following interfaces, only filtering of incoming traffic is supported:

- Management interfaces
- Overlay gateways

NOTE

Both Layer 2 and Layer 3 ACLs are supported under flow-based QoS. For more information, refer to the "Configuring QoS" > "Flow-based QoS" section of the *Network OS Layer 2 Switching Configuration Guide*.

Configuring and managing Layer 2 (MAC) ACLs

MAC ACL configuration guidelines

Follow these guidelines and restrictions when configuring MAC ACLs.

- An ACL name can be up to 63 characters long, and must begin with a-z, A-Z or 0-9. You can also use underscore (_) or hyphen (-) in an ACL name, but not as the first character.
- On any given device, an ACL name must be unique among all ACL types (MAC/IPv4/IPv6; standard or extended).
- The order of the rules in an ACL is critical. The first rule that matches the traffic stops further processing of the frames. For example, following an **apply** match, subsequent **deny** or **hard-drop** rules do not override the **apply**.
- When you add rules to an ACL, you have the option of specifying the rule sequence number. If you create a rule without a sequence number, it is automatically assigned a sequence number incremented above the previous last rule.
- There is an implicit "permit" rule at the end of every Layer 2 rules list. This permits all Layer 2 streams that do not match any of the "deny" rules in the ACL.
- If an ACL includes a rule that denies a specific host or range, the device still responds to the **ping** command, unless there is also a relevant rule with the **hard drop** option.
- A hard-drop rule overrides control packet trap entries. As a result, it may interfere with normal operations of the protocols.
- Existing ACL rules cannot be changed, or updated with elements like **count** and **log**. You need to delete the rule and recreate it with the changed elements.
- You can apply up to six ACLs to each user interface, as follows:
 - One ingress MAC ACL—if the interface is in switchport or overlay-gateway mode
 - One egress MAC ACL—if the interface is in switchport mode
 - One ingress IPv4 ACL
 - One egress IPv4 ACL
 - One ingress IPv6 ACL
 - One egress IPv6 ACL

NOTE

You can apply a specific ACL to one or more interfaces, for ingress or egress, or for both.

Creating a standard MAC ACL

A standard ACL permits or denies traffic according to source address only.

1. Enter **configure** to access global configuration mode.

```
switch# configure
```

2. Enter the **mac access-list standard** command to create the access list.

```
switch(config)# mac access-list standard test_01
switch(config-macl-std)#
```

3. For each ACL rule that you need to create, enter a **[seq] [permit | deny | hard-drop]** command, specifying the needed parameters.

```
switch(config-macl-std)# seq 100 deny host 0011.2222.3333 count
switch(config-macl-std)# seq 110 permit host 0022.1111.2222 count
switch(config-macl-std)# deny host 0022.3333.4444 count
switch(config-macl-std)# permit host 0022.5555.3333 count
```

4. Apply the ACL that you created to the appropriate interface.
5. In privileged EXEC mode, enter the **copy** command to save the *running-config* file to the *startup-config* file.

```
switch# copy running-config startup-config
```

Creating an extended MAC ACL

An extended ACL permits or denies traffic according to one or more of the following parameters: source address, destination address, port, protocol (TCP or UDP), TCP flags.

1. Enter **configure** to access global configuration mode.

```
switch# configure
```

2. Enter the **mac access-list extended** command to create the access list.

```
switch(config)# mac access-list extended test_02
```

3. Create a rule in the MAC ACL to **permit** traffic with the source MAC address and the destination MAC address.

```
switch(config-macl-ext)# permit host 0022.3333.4444 host 0022.3333.5555
```

4. Use the **seq** command to insert the rule anywhere in the MAC ACL.

```
switch(config-macl-ext)# seq 5 permit host 0022.3333.4444 host 0022.3333.5555
```

5. Return to privileged EXEC mode.

```
switch(config-macl-ext)# end
```

6. Apply the ACL that you created to the appropriate interface.
7. In privileged EXEC mode, enter the **copy** command to save the *running-config* file to the *startup-config* file.

```
switch# copy running-config startup-config
```

Applying Layer 2 ACLs to interfaces

An ACL affects network traffic only after you apply it to an interface, using the **access-group** command. Use these procedures to apply MAC standard or extended ACLs to interfaces.

Applying a MAC ACL to a physical interface

Use this procedure to apply a Layer 2 ACL to any physical interface.

1. Enter the **configure** command to access global configuration mode.

```
switch# configure
```

2. Enter the **interface** command, specifying the interface type and the rbridge-id/slot/port number.

```
switch(config)# interface tengigabitethernet 2/2/1
```

3. If needed, to configure the interface as a Layer 2 switch port, enter the **switchport** command.
4. Enter the **mac access-group** command, specifying the ACL that you are applying to the interface, the in/out direction, and (optionally) **routed** or **switched**.

```
switch(config-if-te-2/2/1)# mac access-group test_02 in
```

Applying a MAC ACL to a LAG interface

Use this procedure to apply a Layer 2 ACL to a LAG (logical) interface.

1. Enter the **configure** command to access global configuration mode.

```
switch# configure
```

2. Enter the **interface port-channel** command, specifying the port-channel number.

```
switch(config)# interface port-channel 10
```

3. Enter the **mac access-group** command, specifying the ACL that you are applying to the interface, the in/out direction, and (optionally) **routed** or **switched**.

```
switch(config-Port-channel-10)# mac access-group test_02 in
```

Applying a MAC ACL to a VLAN interface

Use this procedure to apply a Layer 2 ACL to a VLAN interface.

1. Enter the **configure** command to access global configuration mode.

```
switch# configure
```

2. Enter the **interface vlan** command, specifying the *vlan-id*.

```
switch(config)# interface vlan 50
```

3. Enter the **mac access-group** command, specifying the ACL that you are applying to the interface, the in/out direction, and (optionally) **routed** or **switched**.

```
switch(config-Vlan-50)# mac access-group test_02 in
```

Applying a MAC ACL to an overlay gateway

Use this procedure for applying a Layer 2 ACL to a VXLAN overlay gateway.

1. Enter the **configure** command to access global configuration mode.

```
switch# configure
```

2. Enter the **overlay-gateway** command to access VXLAN overlay-gateway configuration mode for a gateway that you configure.

```
switch(config)# overlay-gateway gw121
```

3. Enter the **mac access-group** command, specifying the ACL and **in**.

```
switch(config-overlay-gw-gw121)# mac access-group stdmacaclin in
```

Removing a MAC ACL

To suspend ACL rules, you can remove the ACL containing those rules from the interface to which it was applied. After removing it, you can also delete the ACL.

1. Enter the **configure** command to access global configuration mode.

```
switch# configure
```

2. Enter the **interface** command, specifying the interface type and rbridge-id/slot/port number.

```
switch(config)# interface tengigabitethernet 178/0/9
```

3. Enter the **no access-group** command.

```
switch(conf-if-te-178/0/9)# no mac access-group macacl2 in
```

Modifying MAC ACL rules

You cannot modify ACL rules. However, you can remove a rule and then recreate it with the desired changes.

If you need to add more rules between existing rules than the current sequence numbering allows, you can use the **resequence** command to reassign sequence numbers. For detailed information, refer to [Reordering the sequence numbers in a MAC ACL](#) on page 72.

NOTE

This example assumes that "test_02" contains an existing rule number 100 with the "deny any any" options.

1. Enter the **configure** command to access global configuration mode.

```
switch# configure
```

2. Enter the **mac access-list** command, specifying the extended ACL "test_02" for modification.

```
switch(config)# mac access-list extended test_02
```

3. Enter the **no seq** command to delete the existing rule 100.

```
switch(conf-macl-ext)# no seq 100
```

-or-

- Enter the **seq** command to recreate rule number 100 with new parameters.

```
switch(conf-macl-ext)# seq 100 permit any any
```

Reordering the sequence numbers in a MAC ACL

Reordering ACL-rule sequence numbers is helpful if you need to insert new rules into an ACL in which there are not enough available sequence numbers.

Note the following regarding sequence numbers and their reordering parameters:

- The default initial sequence number is 10 and the default increment is 10.
- For reordering the sequence numbers, you need to specify the following:
 - The new starting sequence number
 - The increment between sequence numbers

The first rule receives the number of the starting sequence number that you specify. Each subsequent rule receives a number larger than the preceding rule. The difference in numbers is determined by the increment number that you specify. The starting-sequence number can range from 0 through 4294967290, and the increment number can range from 1 through 4294967290.

For example: In the command below, the **resequence access-list** command assigns a sequence number of 50 to the first rule, 55 to the second rule, 60 to the third rule, and so forth.

```
switch# resequence access-list mac test_02 50 5
```

Creating a MAC ACL rule enabled for counter statistics

When you create ACL rules, the **count** parameter enables you to display counter statistics.

1. Enter the **configure** command to access global configuration mode.

```
switch# configure
```

2. Enter the **mac access-list** command to create or modify an access list.

```
switch(config)# mac access-list standard mac_acl_1
```

3. For each ACL rule for which you need to display statistics, enter a **seq** command that includes the **count** keyword.

```
switch(conf-macl-std)# seq 100 deny 0022.3333.4444 count
```

4. If you have not yet applied the ACL to the appropriate interface, you can do so now.
5. (Optional) To display ACL counter statistics, enter the **show statistics access-list** command.

ACL logs

ACL logs can provide insight into permitted and denied network traffic.

ACL logs maintain the following properties:

- Supported for all ACL types (MAC, IPv4, and IPv6)
- Supported for incoming and outgoing network traffic
- Supported for all user interfaces (but not on management interfaces) on which ACLs can be applied
- May be CPU-intensive

Enabling and configuring the ACL log buffer

Among the conditions required for ACL logging is that the ACL log buffer be enabled and configured.

1. Enter the **debug access-list-log buffer** command to enable and configure ACL log buffering.

```
switch# debug access-list-log buffer circular packet count 1600
```

2. (Optional) To display the current ACL log buffer configuration, enter the **show access-list-log buffer config** command.

```
switch# show access-list-log buffer config
ACL Logging Enabled.
ACL logging Buffer configuration: Buffer type is circular and Buffer size is 1600.
```

Creating a MAC ACL rule enabled for logging

When you create ACL rules for which you want to enable logging, you must include the **log** parameter.

1. Enter the **configure** command to access global configuration mode.

```
switch# configure
```

2. Enter the **mac access-list** command to create or modify an access list.

```
switch(config)# mac access-list standard mac_1
```

3. For each ACL rule for which you need logging, enter a **seq** command that includes the **log** keyword.

```
switch(conf-mac1-std)# seq 100 deny 0022.3333.4444 log
```

4. If you have not yet applied the ACL to the appropriate interface, you can do so now.
5. (Optional) To display ACL logs, enter the **show access-list log buffer** command.

Configuring and managing Layer 3 (IPv4 and IPv6) ACLs

Layer 3 ACL configuration guidelines

Follow these guidelines when configuring Layer 3 ACLs. We first present general guidelines, then guidelines for ACLs applied to a user interface, then guidelines for ACLs applied to a management interface.

The following are guidelines for Layer 3 ACLs applied either to user interfaces or to management interfaces:

- An ACL name can be up to 63 characters long, and must begin with a-z, A-Z or 0-9. You can also use underscore (_) or hyphen (-) in an ACL name, but not as the first character.
- On any given switch, an ACL name must be unique among all ACL types (MAC/IPv4/IPv6; standard or extended).
- The order of the rules in an ACL is critical. The first rule that matches the traffic stops further processing of the frames. For example, following an **apply** match, subsequent **deny** or **hard-drop** rules do not override the **apply**.
- When you create an ACL rule, you have the option of specifying the rule sequence number. If you create a rule without a sequence number, it is automatically assigned a sequence number incremented above the previous last rule.
- Existing ACL rules cannot be changed, or updated with elements like **count** and **log**. You need to delete the rule and recreate it with the changed elements.
- If an ACL includes a rule that denies a specific host or range (for example: "seq 2 deny host 10.9.106.120"), the switch still responds to the **ping** command, unless there is also a relevant rule with the **hard drop** option (such as `seq 20 hard-drop icmp any any`).
- A hard-drop rule overrides control packet trap entries. As a result, it may interfere with normal operations of the protocols.
- If—under IPv6—RA-Guard is enabled on an interface, there is an internal rule that takes precedence over user-configured rules applied to that interface. For example:

```
seq 10 hard-drop IPv6-ICMP any any icmp-type 134 icmp-code 0
```

Guidelines for Layer 3 ACLs applied to user interfaces

In addition to the general guidelines, the following additional guidelines are relevant for Layer 3 ACLs applied to user interfaces:

- There is an implicit "deny" rule at the end of every Layer 3 ACL applied to a user interface. This denies all L3 streams that do not match any of the "permit" rules in the ACL.
- You can apply a maximum of six ACLs to a user interface, as follows:
 - One ingress MAC ACL—if the interface is in switchport or overlay-gateway mode
 - One egress MAC ACL—if the interface is in switchport mode
 - One ingress IPv4 ACL
 - One egress IPv4 ACL
 - One ingress IPv6 ACL
 - One egress IPv6 ACL

NOTE

You can apply a specific ACL to one or more interfaces, for ingress or egress, or for both.

Guidelines for Layer 3 ACLs applied to a management interface

In addition to the general guidelines, the following additional guidelines are relevant for Layer 3 ACLs applied to a management interface:

- For an ACL applied to a management interface, Layer 3 streams that do not match any of the "deny" rules in the ACL are permitted.
- For an ACL applied to a management interface, **hard-drop** parameters are interpreted as **deny** parameters.
- (Extended ACLs) Applying a permit or deny UDP ACL to the management interface enacts an implicit deny for TCP; however, a ping will succeed.
- (Extended ACLs) Applying a permit or deny ACL for a specific UDP port enacts an implicit deny for all other UDP ports.
- (Extended ACLs) Applying a permit or deny ACL for a specific TCP port enacts an implicit deny for all other TCP ports.
- ACLs in a route-map are not used by the Open Shortest Path First (OSPF) or Border Gateway Protocol (BGP) protocols.
- You can apply a maximum of two ACLs to a management interface, as follows:
 - One ingress IPv4 ACL
 - One ingress IPv6 ACL
- Before downgrading firmware, unbind any ACLs on the management interface.

If no ACLs are applied to the switch management interface, the following default rules are effective:

- seq 0 permit tcp any any eq 22
- seq 1 permit tcp any any eq 23
- seq 2 permit tcp any any eq 80
- seq 3 permit tcp any any eq 443
- seq 4 permit udp any any eq 161
- seq 5 permit udp any any eq 123
- seq 6 permit tcp any any range 600-65535
- seq 7 permit udp any any range 600-65535

Creating a standard IPv4 ACL

A standard ACL permits or denies traffic according to source address only.

1. Enter **configure** to access global configuration mode.

```
switch# configure
```

2. Enter the **ip access-list standard** command to create the access list.

```
switch(config)# ip access-list standard stdACL3
```

3. For each ACL rule, enter a **seq** command, specifying the needed parameters.

```
switch(config-ipacl-std)# seq 5 permit host 10.20.33.4
switch(config-ipacl-std)# seq 15 deny any
```

4. Apply the ACL that you created to the appropriate interface.

The following example shows how to create a standard IPv4 ACL, define a rule for it, and apply the ACL to an interface.

```
switch# configure
switch(config)# ip access-list standard stdACL3
switch(config-ipl-std)# seq 5 permit host 10.20.33.4
switch(config-ipl-std)# seq 15 deny any
switch(config-ipl-std)# exit
switch(config)# interface tengigabitethernet 122/5/22
switch(conf-if-te-122/5/22)# ip access-group stdACL3 in
```

Creating a standard IPv6 ACL

A standard ACL permits or denies traffic according to source address only.

1. Enter **configure** to access global configuration mode.

```
switch# configure
```

2. Enter the **ipv6 access-list standard** command to create the access list.

```
switch(config)# ipv6 access-list standard std_V6_ACL4
```

3. For each ACL rule, enter a **[seq] {permit | deny | hard-drop}** command, specifying the needed parameters.

```
switch(config-ip6acl-std)# seq 5 permit host 2001:db8::1:2
switch(config-ip6acl-std)# seq 15 deny any
```

4. Apply the ACL that you created to the appropriate interface.

Creating an extended IPv4 ACL

An extended ACL permits or denies traffic according to one or more of the following parameters: source address, destination address, port, protocol (TCP or UDP), TCP flags.

1. Enter **configure** to access global configuration mode.

```
switch# configure
```

2. Enter the **ip access-list extended** command to create the access list.

```
switch(config)# ip access-list extended extdACL5
```

3. For each ACL rule, enter a **[seq] {permit | deny | hard-drop}** command—specifying the needed parameters.

```
switch(config-ipl-ext)# seq 5 deny tcp host 10.24.26.145 any eq 23
switch(config-ipl-ext)# seq 7 deny tcp any any eq 80
switch(config-ipl-ext)# seq 10 deny udp any any range 10 25
switch(config-ipl-ext)# seq 15 permit tcp any any
```

4. Apply the ACL that you created to the appropriate interface.

Creating an extended IPv6 ACL

An extended ACL permits or denies traffic according to one or more of the following parameters: source address, destination address, port, protocol (TCP or UDP), TCP flags.

1. Enter **configure** to access global configuration mode.

```
switch# configure
```

2. Enter the **ipv6 access-list extended** command to create the access list.

```
switch(config)# ipv6 access-list extended ip_acl_1
```

3. For each ACL rule, enter a **[seq] {permit | deny | hard-drop}** command—specifying the needed parameters.

```
switch(conf-ip6acl-ext)# seq 10 deny ipv6 2001:2002:1234:1::/64 2001:1001:1234:1::/64 count
```

4. Apply the ACL that you created to the appropriate interface.

The following example shows how to create an extended IPv6 ACL, define rules for it (including a rule that filters by DSCP ID), and apply the ACL to an interface.

```
switch# configure
switch(config)# ipv6 access-list extended ip_acl_1
switch(conf-ip6acl-ext)# seq 10 deny ipv6 any any dscp 3
switch(conf-ip6acl-ext)# seq 20 deny ipv6 2001:2002:1234:1::/64 2001:1001:1234:1::/64 count
switch(conf-ip6acl-ext)# exit
switch(config)# interface ten 122/5/22
switch(conf-if-te-122/5/22)# ipv6 access-group ip_acl_1 in
```

Applying Layer 3 ACLs to interfaces

An ACL affects network traffic only after you apply it to an interface, using the **access-group** command. Use these procedures to apply standard or extended IPv4 and IPv6 ACLs to interfaces.

Applying a Layer 3 ACL to a physical interface

Use this procedure for applying an IPv4 or IPv6 ACL to a physical interface, using the **access-group** command.

1. Enter **configure** to change to global configuration mode.

```
switch# configure
```

2. Enter the **interface** command, specifying the interface type and the rbridge-id/slot/port number.

```
switch(config)# interface ten 122/5/22
```

3. Enter the **ip/ipv6 access-group** command, specifying the ACL that you are applying to the interface, the in/out direction, and (optionally) **routed** or **switched**.

```
switch(conf-if-te-122/5/22)# ipv6 access-group ip_acl_1 in
```

4. (Optional) To display updated ACL details, enter the **show access-list** command.

```
switch(conf-if-te-122/5/22)# do show access-list ipv6 ip_acl_1 in
ipv6 access-list ip_acl_1 on TenGigabitEthernet 122/5/22 at Ingress (From User)
seq 10 deny ipv6 2001:2002:1234:1::/64 2001:1001:1234:1::/64 count (Active)
```

The following example shows how to apply an IPv6 ACL to a physical interface.

```
switch# configure
switch(config)# interface ten 122/5/22
switch(conf-if-te-122/5/22)# ipv6 access-group ip_acl_1 in

switch(conf-if-te-122/5/22)# do show access-list ipv6 ip_acl_1 in
ipv6 access-list ip_acl_1 on TenGigabitEthernet 122/5/22 at Ingress (From User)
seq 10 deny ipv6 2001:2002:1234:1::/64 2001:1001:1234:1::/64 count (Active)
```

Applying a Layer 3 ACL to a LAG interface

Use this procedure to apply an IPv4 or IPv6 ACL to a LAG (logical) interface.

1. Enter the **configure** command to access global configuration mode.

```
switch# configure
```

2. Enter the **interface port-channel** command, specifying the port-channel number.

```
switch(config)# interface port-channel 10
```

3. Enter the **ip/ipv6 access-group** command, specifying the ACL that you are applying to the interface, the in/out direction, and (optionally) **routed** or **switched**.

```
switch(config-Port-channel-10)#ip access-group test_02 in
```

Applying a Layer 3 ACL to a VE interface

Use this procedure to apply an IPv4 or IPv6 ACL to a VE interface.

1. Enter the **configure** command to access global configuration mode.

```
switch# configure
```

2. Enter the **interface ve** command, specifying the *ve-id*.

```
switch(config)# interface ve 50
```

3. Enter the **ip/ipv6 access-group** command, specifying the ACL that you are applying to the interface, the in/out direction, and (optionally) **routed** or **switched**.

```
switch(config-ve-50)# ip access-group test_02 in
```

Applying a Layer 3 ACL to an overlay gateway

Use this procedure for applying a Layer 3 ACL to a VXLAN overlay gateway.

1. Enter the **configure** command to access global configuration mode.

```
switch# configure
```

2. Enter the **overlay-gateway** command to access VXLAN overlay-gateway configuration mode for a gateway that you configure.

```
switch(config)# overlay-gateway gw121
```

3. Enter one or both of the following commands, specifying network protocol (**ip** or **ipv6**), the ACL, and **in**.

```
sw0(config-overlay-gw-gw121)# ip access-group stdipaclin in
sw0(config-overlay-gw-gw121)# ipv6 access-group stdipv6aclin in
```

Applying a Layer 3 ACL to a management interface

Use this procedure for applying a Layer 3 ACL to a management interface, using the **access-group** command.

NOTE

In virtual cluster switching (VCS) mode, you can apply an ACL to any cluster node, specifying its RBridge ID and port.

NOTE

If an explicit "deny ip any any" IP rule is applied to the management interface, that IP rule has priority over any TCP or UDP rules. Any incoming TCP packets that match that IP rule are dropped because the TCP packet has an IP header.

1. Enter **configure** to access global configuration mode.

```
switch# configure
```

2. Use the **interface management** command to enter configuration mode for the management interface, specifying RBridge ID/port.

```
switch(config)# interface management 3/1
```

3. To apply an IPv4 ACL to the management interface, enter the **ip access-group** command, specifying the ACL that you are applying to the interface, and **in**

```
switch(config-Management-3/1)# ip access-group stdACL3 in
```

4. To apply an IPv6 ACL to the management interface, enter the **ipv6 access-group** command, specifying the ACL that you are applying to the interface, and **in**.

```
switch(config-Management-3/1)# ipv6 access-group stdV6ACL1 in
```

5. Use the **exit** command to return to global configuration mode. Your changes are automatically saved.

```
switch(config-Management-3/1)# exit
```

Removing a Layer 3 ACL

To suspend ACL rules, you can remove the ACL containing those rules from the interface to which it was applied. After removal, you can also delete the ACL.

1. Enter the **configure** command to access global configuration mode.

```
switch# configure
```

2. Enter the **interface** command, specifying the interface type and rbridge-id/slot/port number.

```
switch(config)# interface tengigabitethernet 122/5/22
```

3. Enter the **no access-group** command.

```
switch(conf-if-te-122/5/22)# no ipv6 access-group ip_acl_1 in
```

Modifying Layer 3 ACL rules

You cannot modify ACL rules. However, you can remove a rule and then recreate it with the desired changes.

NOTE

Although you can use this procedure for IPv4 or IPv6 ACLs, the example is for IPv4. The example is canceling counting statistics for a rule and instead enabling logging.

1. To display the rules of all ACLs of a given IP type and standard/extended specification, in global configuration mode enter the **show running-config** command.

```
switch# show running-config ip access-list standard
ip access-list standard a1
  seq 10 permit host 10.1.1.1 count
```

2. Enter the **configure** command to access global configuration mode.

```
switch# configure
```

3. Enter the **ip access-list** command, specifying the ACL that you need to modify.

```
switch(config)# ip access-list standard a1
```

4. Enter the **no seq** command to delete rule 10.

```
switch(conf-ipacl-std) # no seq 10
```

5. Enter the **seq** command to recreate rule number 10 with new parameters.

```
switch(conf-ipacl-std)# seq 10 permit host 10.1.1.1 log
```

Reordering the sequence numbers in a Layer 3 ACL

Reordering ACL-rule sequence numbers is helpful if you need to insert new rules into an ACL in which there are not enough available sequence numbers.

NOTE

Although you can use this procedure for IPv4 or IPv6 ACLs, the example is for IPv4.

Note the following regarding sequence numbers and their reordering parameters:

- The default initial sequence number is 10 and the default increment is 10.
- For reordering the sequence numbers, you need to specify the following:
 - The new starting sequence number
 - The increment between sequence numbers

The first rule receives the number of the starting sequence number that you specify. Each subsequent rule receives a number larger than the preceding rule. The difference in numbers is determined by the increment number that you specify. The starting-sequence number can range from 0 through 4294967290, and the increment number can range from 1 through 4294967290.

For example: In the command below, for the IPv4 ACL "a1", the **resequence access-list** command assigns a sequence number of 5 to the first rule, 10 to the second rule, 15 to the third rule, and so forth.

```
switch# resequence access-list ip a1 5 5
```


ACL counter statistics (Layer 3)

If an ACL rule contains the **count** parameter, you can access statistics for the rule, including the number of frames permitted or denied by that rule. If needed, you can also clear ACL statistics.

NOTE

If an ACL with rules that contain the **count** keyword is applied to a management interface, statistics are not recorded for that ACL.

Creating an IPv4 ACL rule enabled for counter statistics

When you create ACL rules, the **count** parameter enables you to display counter statistics.

1. Enter **configure** to access global configuration mode.

```
switch# configure
```

2. Enter the **ip access-list** command to create or modify an access list.

```
switch(config)# ip access-list standard stdACL3
```

3. For each ACL rule for which you need to display statistics, enter a **seq** command that includes the **count** keyword.

```
switch(config-ipacl-std)# seq 5 permit host 10.20.33.4 count
switch(config-ipacl-std)# seq 15 deny any count
```

4. If you have not yet applied the ACL to the appropriate interface, you can do so now.
5. (Optional) To display ACL counter statistics, enter the **show statistics access-list** command.

```
switch# show statistics access-list ipv6 ip_acl_1 in
ipv6 access-list ip_acl_1 on TenGigabitEthernet 122/1/2 at Ingress (From User)
  seq 10 deny ipv6 2001:2002:1234:1::/64 2001:1001:1234:1::/64 count (0 frames)
  seq 20 deny ipv6 2002:2003:1234:1::/64 2001:3001:1234:1::/64 count (33 frames)
```

Creating an IPv6 ACL rule enabled for counter statistics

When you create ACL rules, the **count** parameter enables you to display counter statistics.

1. Enter the **configure** command to access global configuration mode.

```
switch# configure
```

2. Enter the **ipv6 access-list** command to create or modify an access list.

```
switch(config)# ipv6 access-list extended ip_acl_1
```

3. For each ACL rule for which you need to display statistics, enter a **seq** command that includes the **count** keyword.

```
switch(conf-ip6acl-ext)# seq 20 deny ipv6 2002:2003:1234:1::/64 2001:3001:1234:1::/64 count
```

4. If you have not yet applied the ACL to the appropriate interface, you can do so now.
5. (Optional) To display ACL counter statistics, enter the **show statistics access-list** command.

```
switch# show statistics access-list ipv6 ip_acl_1 in
ipv6 access-list ip_acl_1 on TenGigabitEthernet 122/1/2 at Ingress (From User)
  seq 10 deny ipv6 2001:2002:1234:1::/64 2001:1001:1234:1::/64 count (0 frames)
  seq 20 deny ipv6 2002:2003:1234:1::/64 2001:3001:1234:1::/64 count (33 frames)
```

The following example shows how to create an IPv6 extended ACL and define a counter-enabled rule for it.

```
switch# configure
switch(config)# ipv6 access-list extended ip_acl_1
switch(conf-ip6acl-ext)# seq 10 deny ipv6 2001:2002:1234:1::/64 2001:1001:1234:1::/64 count
```

ACL logs

ACL logs can provide insight into permitted and denied network traffic.

ACL logs maintain the following properties:

- Supported for all ACL types (MAC, IPv4, and IPv6)
- Supported for incoming and outgoing network traffic
- Supported for all user interfaces (but not on management interfaces) on which ACLs can be applied
- May be CPU-intensive

Enabling and configuring the ACL log buffer

Among the conditions required for ACL logging is that the ACL log buffer be enabled and configured.

1. Enter the **debug access-list-log buffer** command to enable and configure ACL log buffering.

```
switch# debug access-list-log buffer circular packet count 1600
```

2. (Optional) To display the current ACL log buffer configuration, enter the **show access-list-log buffer config** command.

```
switch# show access-list-log buffer config
ACL Logging Enabled.
ACL logging Buffer configuration: Buffer type is circular and Buffer size is 1600.
```

Creating a Layer 3 ACL rule enabled for logging

When you create ACL rules for which you want to enable logging, you must include the **log** parameter.

NOTE

Although this topic applies to both IPv4 and IPv6, the examples are IPv6.

1. Enter the **configure** command to access global configuration mode.

```
switch# configure
```

2. Enter the **access-list** command to create or modify an access list.

```
switch(config)# ipv6 access-list extended ip_acl_1
```

3. For each ACL rule for which you need logging, enter a **seq** command that includes the **log** keyword.

```
switch(conf-ip6acl-ext)# seq 20 deny ipv6 2002:2003:1234:1::/64 2001:3001:1234:1::/64 log
```

4. If you have not yet applied the ACL to the appropriate interface, you can do so now.

NOTE

If an ACL with rules that contain the **log** keyword is applied to a management interface, logs are not recorded for that ACL.

5. (Optional) To display ACL logs, enter the **show access-list log buffer** command.

ACL Show and Clear commands

There is a full range of ACL show and clear commands. They are documented in the *Network OS Command Reference*, and listed here with descriptions.

TABLE 9 ACL Show commands in the Network OS Command Reference

Command	Description
show access-list	For a given network protocol and inbound/outbound direction, displays ACL information. You can show information for a specified ACL or only for that ACL on a specified interface. You can also display information for all ACLs bound to a specified switch interface, VE RBridge, or VXLAN overlay gateway.
show access-list-log buffer	Displays the contents of the ACL buffer.
show access-list-log buffer config	Displays the ACL buffer configuration.
show running-config access-list	For a given network protocol and standard/extended type, displays ACL configuration. You can show the configuration of a specified ACL or for all such ACLs.
show statistics access-list	For a given network protocol and inbound/outbound direction, displays statistical information—for ACL rules that include the count keyword. You can show statistics for a specified ACL or only for that ACL on a specified interface. You can also display statistical information for all ACLs bound to a specified switch interface, VE RBridge, or VXLAN overlay gateway.

TABLE 10 ACL Clear commands in the Network OS Command Reference

Command	Description
clear counters access-list	For a given network protocol and inbound/outbound direction, clears ACL statistical information. You can clear all statistics for a specified ACL or only for that ACL on a specified interface. You can also clear statistical information for all ACLs bound to a specified switch interface, VE RBridge, or VXLAN overlay gateway.

Configuring Fabric Authentication

- Fabric authentication overview..... 85
- Understanding fabric authentication..... 88
- Configuring port security..... 94

Fabric authentication overview

When you connect a Brocade VCS Fabric to a Fabric OS fabric, the Fibre Channel E_Ports on the hardware connect through Inter-Switch Links (ISLs) to EX_Ports on an FC router, which in turn connects to the Fabric OS network.

Refer to the Fibre Channel ports overview section of the *Network OS Administrator's Guide*.

To ensure that no unauthorized devices can access the fabric, the software provides support for security policies and protocols capable of authenticating the software (E_Ports) to the EX_Ports on the FC router (FCR) that provides access to the SAN storage and services.

DH-CHAP

The software uses the Diffie-Hellman Challenge Handshake Authentication Protocol (DH-CHAP) to control access between devices. DH-CHAP is a password-based, key exchange authentication protocol that negotiates hash algorithms and Diffie Hellman (DH) groups before performing authentication. It supports both MD5 and SHA-1 hash algorithm-based authentication.

The Fibre Channel Security Protocol (FC-SP) defines the DH groups supported in the DH-CHAP protocol. Following current FC-SP standards, the software supports the following DH groups:

- 00 - DH Null option
- 01 - 1024 bit key
- 02 - 1280 bit key
- 03 - 1536 bit key
- 04 - 2048 bit key

To configure DH-CHAP authentication between devices (E_Ports) and FC routers (EX_Ports) you must apply a matching configuration to both sides of the connection. Each device must be configured locally.

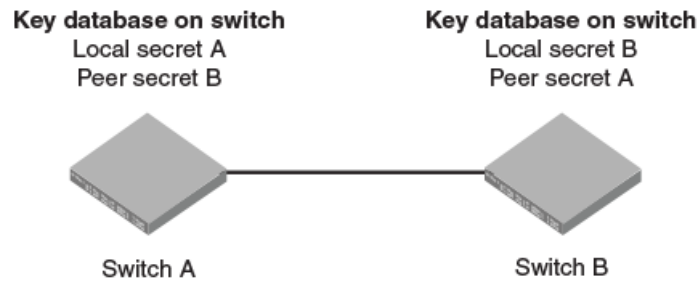
Shared secret keys

When you configure device ports for DH-CHAP authentication, you define a pair of shared secrets known to both devices as a secret key pair. A key pair consists of a local secret and a peer secret. The local secret uniquely identifies the local device. The peer secret uniquely identifies the entity to which the local device may authenticate. Every device may share a secret key pair with any other device or host in a fabric.

Shared secret keys have the following characteristics:

- The shared secrets must be configured locally on every device.
- If shared secrets are not set up for a link, authentication fails. The "Authentication Failed" error is reported for the port.
- The minimum length of a shared secret is 8 bytes and the maximum 40 bytes.

FIGURE 2 DH-CHAP authentication



The preceding figure illustrates how the secrets are configured. Assume two devices, A and B. Each device has a local secret (local secret A and local secret B), and a matching peer secret (peer secret A and peer secret B). If device B wants to shake hands with A, it will use A's local secret (B's peer secret A) to send the information. In doing so, A authenticates B by confirming its identity through the exchange of matching secret pairs. Conversely, B authenticates A when A sends information to B using B's local secret (A's peer secret B).

On the FC router, the authentication configuration for EX_Ports is set to fixed default values and cannot be changed. The Fabric OS **authutil** command is applicable only to the E_Ports on the FC router, not to EX_Ports. The following table shows the default authentication configuration for EX_Ports:

TABLE 11 Default EX_Port configuration

Operand	Value
Auth-type	DHCHAP
Auth-Policy	PASSIVE
Auth-Group	*(0, 1, 2, 3, 4)
Auth-Hash	msd5, sha1

Switch connection control policy

The Switch Connection Control (SCC) policy controls access between neighboring devices. The policy defines and restricts which devices can join the fabric. Each time an E_Port-to-EX_Port connection is attempted, the devices are checked against the policy and the connection is either accepted or rejected depending on whether the connecting device is listed in the policy. The policy is named SCC_POLICY and accepts members listed as world wide names (WWNs).

A device configured with an active SCC policy reviews its database whenever a neighboring device tries to establish a connection. If the WWN of the connecting device is found in the SCC active policy database, the connecting device is allowed to join the fabric. If the neighboring device is not specified in the SCC policy active list, both devices are segmented.

By default, any device is allowed to join the fabric; the SCC policy is not enforced until it is created and activated. Creating a policy without any entries blocks access from all devices. The local switch is not required to be included in a switch-local SCC policy.

SCC policy commands are not distributed across the cluster. The RBridge ID of the node should be used to configure policy configurations.

Port Security

Port security can be used to prevent administrators or malicious users from being able to change the MAC address of a virtual machine (VM) in a data center environment. This is especially helpful in virtual desktop infrastructure (VDI) environments, where users might have full administrative control of the VM and can change the MAC address of a virtual network interface card (vNIC). Here port security can be used to provide more control over the behavior of VMs.

Port security can be used to prevent administrators or malicious users from being able to change the MAC address of a virtual machine (VM) in a data center environment. This is especially helpful in virtual desktop infrastructure (VDI) environments, where users might have full administrative control of the VM and can change the MAC address of a virtual network interface card (vNIC). Here port security can be used to provide more control over the behavior of VMs. The secured ports can be categorized as either trusted or untrusted. The administrator can apply policies appropriate to those categories to protect against various types of attacks. Port security features can be turned on to obtain the most robust port-security level that is appropriate. Basic port-security features are enabled in the device's default configuration. Additional features can be enabled with minimal configuration steps.

The following MAC port-security features enhance security at Layer 2:

- **MAC address limiting**—This restricts input to an interface by limiting and identifying the MAC addresses of workstations that are allowed to access the port. When secure MAC addresses are assigned to a secure port, the port does not forward packets with source addresses outside the group of defined addresses.
- **OUI-based port security**—If an administrator knows which types of systems are connecting to the network, it is possible to configure an Organizationally Unique Identifier (OUI) on a secure port to ensure that only traffic coming from devices that are part of the configured OUI is forwarded.
- **Port security with sticky MAC addresses**—Using sticky MAC addresses is similar to using static secure MAC addresses, but sticky MAC addresses are learned dynamically. These addresses are retained when a link goes down.

Default port security configuration options

Port security is disabled by default. The following table summarizes default port-security configuration options that are applied to an interface when it is made a secure port.

TABLE 12 Default configurations for port security

Feature	Default configuration
Max. number of secure MAC addresses	8192
Violation mode	Shutdown
Shutdown time (minutes)	0

Port security commands

Port security is enabled on an interface by means of a series of switchport commands. For configuration examples, refer to *Configuring port security* section and the *Network OS Command Reference*.

Command	Description
switchport port-security	Enables or disables port security on an interface port.
switchport port-security mac-address	Configures the MAC address option for port security on an interface port.
switchport port-security max	Configures the maximum number of MAC addresses used for port security on an interface port.
switchport port-security oui	Configures an Organizationally Unique Identifier (OUI) MAC address for port security on an interface port.
switchport port-security shutdown-time	Configures the shutdown-time option for port security on an interface port.
switchport port-security sticky	Converts dynamic MAC addresses to sticky secure MAC addresses.
switchport port-security violation	Configures the violation response options for port security on an interface.

Port security troubleshooting commands

The following commands can be used to troubleshoot port security configuration issues.

Command	Description
<code>show ip interface brief</code>	Displays port-security status when the port-security feature is applied.
<code>show port-security</code>	Displays the configuration information related to port-security.
<code>show port-security addresses</code>	Displays the configuration information related to port-security addresses.
<code>show port-security interface</code>	Displays the configuration information related to port-security interfaces.
<code>show port-security oui interface</code>	Displays the configuration information related to port-security for Organizationally Unique Identifier (OUI) interfaces.
<code>show port-security sticky interface</code>	Displays the configuration information related to port-security for a sticky interface

Port security guidelines and restrictions

Note the following guidelines and restrictions for configuring port security:

- A port mode change is not allowed when port security is enabled on the interface.
- A maximum of 4 OUIs are allowed per secure port. A maximum of 20 secure ports are allowed to enable OUI-based port security.
- Static secure MAC addresses are not supported for OUI-based port security.
- When the user tries to configure the first OUI IPv4 address on a secure port, traffic is flooded until all entries are programmed in the hardware.
- If a port-security-based change occurs when a port is shut down, the shutdown timer is not triggered. Consequently, the user must restore the full functionality of the port.
- When port security causes a port to be shut down and the user manually changes the shutdown time, the shutdown timer is reset and the timer starts with the new shutdown time.
- A secure port cannot be a destination port for Switch Port Analyzer (SPAN) purposes, because the port cannot be a Layer 2 port.
- Port security configurations are not allowed on member interfaces of a link aggregation group (LAG). They are allowed on the LAG interface, however, as they are in other Layer 2 configurations.
- Static MAC addresses cannot be configured on a secure port. They must be configured as secure MAC addresses on the secure port.
- Access control lists (ACLs) take precedence over the port security feature.

Understanding fabric authentication

This section presents a brief overview of SSH server key exchange, configuring an authentication policy and device authentication, and configuring SCC policy sets.

Configuring SSH server key exchange

The SSH server key-exchange specifies the method used for generating one-time session keys for encryption and authentication with the SSH server. Currently, you can configure the SSH server key-exchange method to DH Group 14.

If you are in logical chassis cluster mode, the **ssh server key-exchange** command is not distributed across the cluster. The RBridge ID of the node should be used to configure service on individual nodes.

When the SSH server key exchange method is configured to DH Group 14, SSH connection from a remote SSH client is allowed only if the key-exchange method at the client end is also configured to DH Group 14.

By default, SSH server key-exchange is not configured as DH Group 14. Enter **no ssh server key-exchange dh-group-14** to restore SSH server key-exchange to the default value.

Configuring an authentication policy

The device authentication (AUTH) policy initiates DH-CHAP authentication on all E_Ports. This policy is persistent across reboots, which means authentication will be initiated automatically on ports or devices brought online if the policy is active. You must configure the AUTH policy on all connected fabric entities.

If you are in logical chassis cluster mode, the authentication policy is *not* distributed across the cluster. The RBridge ID of the node should be used to configure protocol and policy configurations.

By default the policy is set to PASSIVE and you can change the policy. All changes to the AUTH policy take effect during the next authentication request. This includes starting authentication on all E_Ports on the local device if the policy is changed to ON or ACTIVE, and clearing the authentication requirement if the policy is changed to OFF.

Authentication policy configuration is not distributed across the cluster. The RBridge ID of the node should be used to configure protocol and policy configurations.

You can set the authentication policy to any of the values listed in the following table. The remaining attributes are optional.

TABLE 13 User account attributes

Setting	Description
ON	Strict authentication is enforced on all E_Ports. During device initialization, authentication is initiated on all E_Ports automatically. The authentication handshaking is completed before the devices exchange the fabric parameters (EFP) for E_Port bring-up. If the connecting device does not support the authentication or the policy is turned off, all ports are disabled and the ISL goes down.
ACTIVE	A device with an ACTIVE policy is more tolerant and can connect to a device with any type of policy. During device initialization, authentication is initiated on all E_Ports, but the port is not disabled if the connecting device does not support authentication, or if the authentication policy is turned off.
PASSIVE (default)	The device does not initiate authentication, but participates in authentication if the connecting device initiates authentication. The device does not start authentication on E_Ports, but accepts the incoming authentication requests, and will not be disabled if the connecting device does not support authentication or the policy is turned off.
OFF	The device does not support authentication, and rejects any authentication negotiation request from a neighbor device or device. A device with the policy set to OFF should not be connected to a device with a policy set to ON. A policy set to ON policy is strict and disables the port if a peer rejects the authentication. DH CHAP shared secrets must be configured on both sides of the connection before you can change the policy from an OFF state to an ON state.

The behavior of the policy between two adjacent devices is defined as follows:

- If the policy is ON or ACTIVE, the device sends an Authentication Negotiation request to the connecting device.
- If the connecting device does not support authentication or the policy is OFF, the request is rejected.
- Once the authentication negotiation succeeds, the DH-CHAP authentication is initiated. If DH-CHAP authentication fails, the port is disabled, regardless of the policy settings.

The policy defines the responses of the host if the connecting device does not support authentication. By default, the policy is set to PASSIVE and you can change the policy with the **fcsp auth** command. This includes starting authentication on all E_Ports if the policy is changed to ON or ACTIVE, and clearing the authentication if the policy is changed to OFF. Before enabling the policy, you must install the DH-CHAP shared secrets. Refer to [Configuring DH-CHAP shared secrets](#) on page 90.

Configuring DH-CHAP shared secrets

To configure the DH-CHAP shared secrets, enter the **fcsp auth-secret** command in privileged EXEC mode. Provide the following information as shown in the example:

- The world wide name (WWN) of the peer.
- The secret of the peer that authenticates the peer to the local switch.
- The local secret that authenticates the local switch to the peer.

NOTE

Only the following non-alphanumeric characters are valid for the secret key: @ \$ % ^ & * () _ + - < > { } [] ; ' :

```
switch# fcsp auth-secret dh-chap node 10:00:00:05:1e:7a:c3:00 peer-secret 12345678 local-secret 87654321
Shared secret is configured successfully.
```

To display the device (WWN) for which the shared secret is configured, use the **show fcsp auth-secret dh-chap** command in privileged EXEC mode.

```
switch# show fcsp auth-secret dh-chap 10:00:00:05:1e:7a:c3:00
```

To remove the shared secrets, use the **no fcsp auth-secret** command in privileged EXEC mode.

```
switch# no fcsp auth-secret dh-chap node 10:00:00:05:1e:7a:c3:00
Shared secret successfully removed
```

Setting up secret keys

Setting up secret keys can quickly become an administrative challenge as your fabric size increases. As a minimum, key pairs need to be installed on all connected fabric entities. However, when connections change, you must install new key pairs to accommodate these changes. If you anticipate this situation, you may install key pairs for all possible connections up front, thus enabling links to change arbitrarily while still maintaining a valid key pair for any new connection.

Setting the authentication policy parameters

The following procedure configures an authentication policy auth-type DH-CHAP (only option), a DH group of 2, and a hash type of md5. The switch policy is set to OFF until you are ready to explicitly activate the policy.

1. In privileged EXEC mode, use the **configure terminal** command to enter global configuration mode.

```
switch# configure terminal
Entering configuration mode terminal
```

2. Enter the **fcsp auth** command with the specified parameters.

```
switch(config)# fcsp auth auth-type dh-chap hash md5 group 2 switch policy off
```

3. Enter the **do show running-config fcsp auth** command to verify the configuration.

```
switch(config)# do show running-config fcsp auth
fcsp auth group 2
fcsp auth hash md5
fcsp auth policy switch off
```

Activating the authentication policy

1. In privileged EXEC mode, issue the **configure terminal** command to enter global configuration mode.

```
switch# configure terminal
Entering configuration mode terminal
```

2. Enter the **fcsp auth auth-type** command to change the policy state from OFF to ON.

```
switch(config)# fcsp auth auth-type switch policy on
```

3. Enter the **do show running-config fcsp auth** command to verify the configuration.

```
switch(config)# do show running-config fcsp auth
fcsp auth group 2
fcsp auth hash md5
fcsp auth policy switch on
```

Configuring defined and active SCC policy sets

The Switch Connection Control (SCC) policy maintains two versions, active, and defined, and creating a policy includes two distinct operations:

1. Creating the defined SCC policy set.
2. Activating the SCC policy.

The defined policy includes a list of WWN members and it is configurable. You can create the SCC policy and its members using a single command, **secpolicy defined-policy SCC_POLICY**. Or you can create the SCC policy first and add the members later. You can modify the defined policy at any time thereafter.

When you create the SCC policy and its defined member set, it remains inactive until you explicitly activate the policy with the **secpolicy activate** command. The SCC policy is enforced on the E_Ports only after you activate the policy. When the policy is active, only the members included in the activated policy can communicate with each other. If you add additional devices to the defined policy, they remain inactive and access is blocked until you activate the defined policy again.

Follow these guidelines and restrictions when configuring SCC policy:

- During the configuration replay operation, the defined and active policies are replayed and the E_Ports are enabled or disabled based on the SCC policy entries in the active policy list.

During a configuration replay operation, if an E_Port is already disabled due to a violation, it will not come online even if the WWN entry is found in the active policy list. You must explicitly bring up the E_Port to enforce the active policy.

- During execution of the **copy file running-config** command, only the defined policy in the switch is updated with the config file entries; the active policy entries remain unchanged. In this case, you must use the **secpolicy activate** command to activate the defined policy list.
- If an empty policy is created and activated, but not saved, all Fibre Channel (FC) E_Ports will be in the disabled state after a reboot.

- Network OS requires that you invoke the **shutdown** command, followed by the **no shutdown** command to bring up the E_Port. Invoking the **no shutdown** command alone does not enable the port.

Creating a defined SCC policy

The following procedure creates a Switch Connection Control (SCC) policy, adds two members, and verifies the configuration.

1. In privileged EXEC mode, issue the **configure terminal** command to enter global configuration mode.
2. Enter the **secpolicy defined-policy SCC_POLICY** command.
This command places you into the defined SCC configuration mode where you can add policy member WWNs.
3. Specify a policy member with the **member-entry WWN** command.
4. Specify a second policy member with the **member-entry WWN** command.
5. Exit the defined SCC configuration mode.
6. Enter the **do show running-config secpolicy defined-policy** command to verify the configuration.

Creating an SCC policy in VCS mode

This example creates an SCC policy in VCS mode:

```
switch# config
Entering configuration mode terminal

switch(config)# rbridge-id 3

switch(config-rbridge-id-3)# secpolicy defined-policy SCC_POLICY

switch(config-defined-policy-SCC_POLICY)# exit

switch(config)#
```

Creating an SCC policy and adding members into the defined policy set in VCS mode

This VCS mode example creates a SCC policy and adds members into the defined policy set

```
switch# config
Entering configuration mode terminal

switch(config)# rbridge-id 3

switch(config-rbridge-id-3)# secpolicy defined-policy SCC_POLICY member-entry 10:00:00:05:1e:00:69:00

switch(config-member-entry-10:00:00:05:1e:00:69:00)# exit

switch(config-defined-policy-SCC_POLICY)# exit

switch(config-rbridge-id-3)# exit
```

Modifying the SCC policy

The same command sequence that creates the Switch Connection Control (SCC) policy adds additional members. The defined SCC member entries are cumulative. Use the **no member-entry** command to remove members from the policy.

The following example adds a member and subsequently removes the same added member:

VCS mode example

```
switch# configure terminal
Entering configuration mode terminal
```

```

switch(config)# rbridge-id 3

switch(config-rbridge-id-3)# secpolicy defined-policy SCC_POLICY

switch(config-defined-policy-SCC_POLICY)# member-entry 10:00:00:05:1e:00:69:00

switch(config-defined-policy-SCC_POLICY)# no member-entry 10:00:00:05:1e:00:69:00

switch(config-defined-policy-SCC_POLICY)# exit

switch(config)# do show running-config secpolicy defined-policy
secpolicy defined-policy SCC_POLICY
member-entry 10:00:00:05:1e:00:69:00
!
member-entry 10:00:00:08:2f:00:79:00

```

Activating the SCC policy

1. Define the SCC policy as shown in section [Creating a defined SCC policy](#) on page 92.
2. Enter the **secpolicy activate** command in privileged EXEC mode.
3. Enter the **do show running-config secpolicy active -policy** command to verify the configuration.

VCS mode example

```

switch# secpolicy activate rbridge-id 3

switch# do show running-config rbridge-id 3 secpolicy defined-policy rbridge-id 3
secpolicy defined-policy SCC_POLICY
member-entry aa:aa:aa:aa:aa:aa:aa:aa
!
member-entry bb:bb:bb:bb:bb:bb:bb:bb
!
member-entry cc:cc:cc:cc:cc:cc:cc:cc
!
!

```

Removing the SCC Policy

1. In privileged EXEC mode, issue the **configure terminal** command to enter global configuration mode.
2. Enter the **no secpolicy defined-policy SCC_POLICY** command.
3. Exit global configuration mode.
4. Activate the SCC policy to save the defined policy configuration to the active configuration.
5. Enter the **do show running-config secpolicy active-policy** command to verify that the policy is empty.

Removing an entry from the policy list of RBridge ID 3 in VCS mode

```

switch# configure terminal
Entering configuration mode terminal

switch(config)# rbridge-id 3

switch(config-rbridge-id-3)# no secpolicy defined-policy SCC_POLICY member-entry 10:00:00:05:1e:00:69:01

switch(config)# exit

switch# do show running-config secpolicy active-policy
% No entries found.

```

Removing the SCC_POLICY entry of RBridge ID 3 in VCS mode

```
switch# configure terminal
Entering configuration mode terminal

switch(config)# rbridge-id 3

switch(config-rbridge-id-3)# no secpolicy defined-policy SCC_POLICY

switch(config)# exit

switch# do show running-config secpolicy active-policy
% No entries found.
```

Configuring port security

The following section covers how to configure port security for access and trunk ports, set port-security MAC address limits and shutdown time, set up OUI-based port security, and configure port security with sticky MAC addresses.

Refer also to [Port Security](#) on page 86.

Configuring port security on an access port

To enable port security on an access port, do the following in global configuration mode.

1. Enable interface subconfiguration mode for the interface you want to modify.

```
switch(config)# interface TenGigabitEthernet 1/0
```

2. Put the interface in Layer 2 mode by using the **switchport** command.

```
switch(conf-if-te-1/0)# switchport
```

3. Enable switchport security by using the **switchport port-security** command.

```
switch(conf-if-te-1/0)# switchport port-security
```

Configuring port security on a trunk port

To enable port security on a trunk port, do the following in global configuration mode.

1. Enable interface subconfiguration mode for the interface you want to modify.

```
switch(config)# interface TenGigabitEthernet 1/0
```

2. Put the interface in Layer 2 mode by using the **switchport** command.

```
switch(conf-if-te-1/0)# switchport
```

3. Set the mode of the interface to trunk.

```
switch(conf-if-te-1/0)# switchport mode trunk
```

4. Set the VLANs that will transmit and receive through the Layer 2 interface.

```
switch(conf-if-te-1/0)# switchport trunk allowed vlan add 100
```

5. Enable switchport security by using the **switchport port-security** command.

```
switch(conf-if-te-1/0)# switchport port-security
```

Configuring port-security MAC address limits

To configure the MAC address option for port security on an interface port, do the following in global configuration mode.

1. Enable interface subconfiguration mode for the interface you want to modify.

```
switch(config)# interface TenGigabitEthernet 1/0
```

2. Put the interface in Layer 2 mode by using the **switchport** command.

```
switch(conf-if-te-1/0)# switchport
```

3. Set the MAC address and VLAN ID for the interface.

```
switch(conf-if-te-1/0)# switchport port-security mac-address 1000.2000.3000 vlan 100
```

Configuring port-security shutdown time

You can configure two responses to a violation of port security: **restrict** and **shutdown**.

- The **restrict** option drops packets that have unknown source addresses until you remove a sufficient number of secure MAC addresses until this value is below that set by the **switchport port-security max** command.
- The **shutdown** option puts the interface in the error-disabled state immediately for a predetermined amount of time.

To configure the port-security shutdown time for an interface port, do the following in global configuration mode.

1. Enable interface subconfiguration mode for the interface you want to modify.

```
switch(config)# interface TenGigabitEthernet 1/0
```

2. Put the interface in Layer 2 mode by using the **switchport** command.

```
switch(conf-if-te-1/0)# switchport
```

3. Set the violation response option to shutdown.

```
switch(conf-if-te-1/0)# switchport port-security violation shutdown
```

4. Set the shutdown time, in minutes.

```
switch(conf-if-te-1/0)# switchport port-security shutdown-time 10
```

Configuring OUI-based port security

If you know which types of systems are connected to your network, use this security feature to configure an Organizationally Unique Identifier (OUI) MAC address on a secure port. This ensures that only traffic from a known OUI MAC address is forwarded.

To configure OUI-based port security, do the following in global configuration mode.

1. Enable interface subconfiguration mode for the interface you want to modify.

```
switch(config)# interface TenGigabitEthernet 1/0
```

2. Put the interface in Layer 2 mode by using the **switchport** command.

```
switch(conf-if-te-1/0)# switchport
```

3. Configure a permitted OUI MAC address by using the **switchport port-security oui** command.

```
switch(conf-if-te-1/0)# switchport port-security oui 2000.3000.4000
```

Configuring port security with sticky MAC addresses

You can configure an interface to convert dynamic MAC addresses to sticky secure MAC addresses and add them to the running-config by enabling sticky learning. This converts all dynamic secure MAC addresses, including those learned dynamically before sticky learning was enabled, to sticky secure MAC addresses.

To configure sticky MAC addresses on a secure port, do the following in global configuration mode.

1. Enable interface subconfiguration mode for the interface you want to modify.

```
switch(config)# interface TenGigabitEthernet 1/0
```

2. Put the interface in Layer 2 mode by using the **switchport** command.

```
switch(conf-if-te-1/0)# switchport
```

3. Enable switchport security by using the **switchport port-security oui** command.

```
switch(conf-if-te-1/0)# switchport port-security oui 2000.3000.4000
```

4. Configure the sticky option.

```
switch(conf-if-te-1/0)# switchport port-security sticky
```


Router Advertisement (RA) Guard

- RA Guard overview..... 97
- RA Guard configuration guidelines 97
- Enabling and disabling RA Guard 98
- RA Guard Show commands..... 98

RA Guard overview

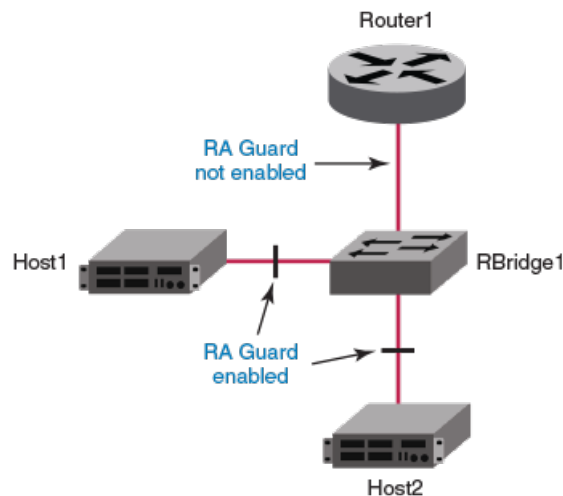
In a routed network, devices are configured to send router advertisements (RAs). RAs enable link nodes to discover routers, allowing the nodes to autoconfigure.

However, routed protocols are susceptible to rogue RAs generated by unauthorized or improperly configured devices connected to the segment. RA Guard prevents RAs from such devices from entering an L2 network.

RA Guard is effective in an environment where messages between IPv6 end-devices traverse L2 networking devices.

In the following diagram, the system is configured to block RAs on ports connected to hosts and to allow RAs on router-facing ports.

FIGURE 3 RA Guard scenario



RA Guard configuration guidelines

When implementing RA Guard, be aware of these configuration guidelines.

If RA Guard is enabled on an interface, this defines an internal ACL rule, for example:

```
seq 10 hard-drop IPv6-ICMP any any icmp-type 134 icmp-code 0
```

Be aware of the following ACL-related issues:

- RA Guard requires a profile with Ternary Content-Addressable Memory (TCAM) resources for IPv6 ACLs. Such resources are shared by RA Guard and user-defined ACLs.
- An RA Guard rule takes precedence over user-configured ACL rules applied to that interface.

NOTE

For more information on ACLs, refer to [Configuring and Managing ACLs](#) on page 67.

You can apply RA Guard only on the Physical Switchport interface type.

RA Guard is only supported on the Brocade VDX 6740 and the Brocade VDX 6940.

Enabling and disabling RA Guard

Use this procedure to enable or disable RA Guard on an interface.

1. Enter **configure** to change to global configuration mode.

```
switch# configure
```

2. Enter the **interface** command, specifying the interface type and the rbridge-id/slot/port number.

```
switch(config)# interface ten 122/5/22
```

3. To enable RA Guard on this interface, enter **ipv6 raguard**.

```
switch(conf-if-te-122/5/22)# ipv6 raguard
```

4. To disable RA Guard on this interface, enter **no ipv6 raguard**.

```
switch(conf-if-te-122/5/22)# no ipv6 raguard
```

RA Guard Show commands

There are several **show** commands that display RA Guard information. They are documented in the *Network OS Command Reference*, and listed here with descriptions.

TABLE 14 RA Guard Show commands in the Network OS Command Reference

Command	Description
show ipv6 raguard	Displays RA Guard status on a specified interface or all interfaces on the device.
show running-config interface	Displays configuration information for an interface type or for a specific interface. RA Guard configuration is also displayed.