

Part No. 209960-G  
August 2005

4655 Great America Parkway  
Santa Clara, CA 95054

# Release Notes for Enterprise Switch Manager Release 5.0.0.0



**NORTEL**

## **Copyright © Nortel Networks Limited 2005. All rights reserved.**

The information in this document is subject to change without notice. The statements, configurations, technical data, and recommendations in this document are believed to be accurate and reliable, but are presented without express or implied warranty. Users must take full responsibility for their applications of any products specified in this document. The information in this document is proprietary to Nortel Networks Inc.

The software described in this document is furnished under a license agreement and may be used only in accordance with the terms of that license. The software license agreement is included in this document.

## **Trademarks**

Nortel Networks, the Nortel Networks logo, the Globemark, Unified Networks, Passport, and BayStack are trademarks of Nortel Networks.

Adobe and Acrobat Reader are trademarks of Adobe Systems Incorporated.

Microsoft, Windows, and Windows NT are trademarks of Microsoft Corporation.

The asterisk after a name denotes a trademarked item.

## **Restricted rights legend**

Use, duplication, or disclosure by the United States Government is subject to restrictions as set forth in subparagraph (c)(1)(ii) of the Rights in Technical Data and Computer Software clause at DFARS 252.227-7013.

Notwithstanding any other license agreement that may pertain to, or accompany the delivery of, this computer software, the rights of the United States Government regarding its use, reproduction, and disclosure are as set forth in the Commercial Computer Software-Restricted Rights clause at FAR 52.227-19.

## **Statement of conditions**

In the interest of improving internal design, operational function, and/or reliability, Nortel Networks Inc. reserves the right to make changes to the products described in this document without notice.

Nortel Networks Inc. does not assume any liability that may occur due to the use or application of the product(s) or circuit layout(s) described herein.

Portions of the code in this software product may be Copyright © 1988, Regents of the University of California. All rights reserved. Redistribution and use in source and binary forms of such portions are permitted, provided that the above copyright notice and this paragraph are duplicated in all such forms and that any documentation, advertising materials, and other materials related to such distribution and use acknowledge that such portions of the software were developed by the University of California, Berkeley. The name of the University may not be used to endorse or promote products derived from such portions of the software without specific prior written permission.

**SUCH PORTIONS OF THE SOFTWARE ARE PROVIDED "AS IS" AND WITHOUT ANY EXPRESS OR IMPLIED WARRANTIES, INCLUDING, WITHOUT LIMITATION, THE IMPLIED WARRANTIES OF MERCHANTABILITY AND FITNESS FOR A PARTICULAR PURPOSE.**

In addition, the program and information contained herein are licensed only pursuant to a license agreement that contains restrictions on use and disclosure (that may incorporate by reference certain limitations and notices imposed by third parties).

---

## Nortel Networks Inc. software license agreement

This Software License Agreement (“License Agreement”) is between you, the end-user (“Customer”) and Nortel Networks Corporation and its subsidiaries and affiliates (“Nortel Networks”). PLEASE READ THE FOLLOWING CAREFULLY. YOU MUST ACCEPT THESE LICENSE TERMS IN ORDER TO DOWNLOAD AND/OR USE THE SOFTWARE. USE OF THE SOFTWARE CONSTITUTES YOUR ACCEPTANCE OF THIS LICENSE AGREEMENT. If you do not accept these terms and conditions, return the Software, unused and in the original shipping container, within 30 days of purchase to obtain a credit for the full purchase price.

“Software” is owned or licensed by Nortel Networks, its parent or one of its subsidiaries or affiliates, and is copyrighted and licensed, not sold. Software consists of machine-readable instructions, its components, data, audio-visual content (such as images, text, recordings or pictures) and related licensed materials including all whole or partial copies. Nortel Networks grants you a license to use the Software only in the country where you acquired the Software. You obtain no rights other than those granted to you under this License Agreement. You are responsible for the selection of the Software and for the installation of, use of, and results obtained from the Software.

**1. Licensed Use of Software.** Nortel Networks grants Customer a nonexclusive license to use a copy of the Software on only one machine at any one time or to the extent of the activation or authorized usage level, whichever is applicable. To the extent Software is furnished for use with designated hardware or Customer furnished equipment (“CFE”), Customer is granted a nonexclusive license to use Software only on such hardware or CFE, as applicable. Software contains trade secrets and Customer agrees to treat Software as confidential information using the same care and discretion Customer uses with its own similar information that it does not wish to disclose, publish or disseminate. Customer will ensure that anyone who uses the Software does so only in compliance with the terms of this Agreement. Customer shall not a) use, copy, modify, transfer or distribute the Software except as expressly authorized; b) reverse assemble, reverse compile, reverse engineer or otherwise translate the Software; c) create derivative works or modifications unless expressly authorized; or d) sublicense, rent or lease the Software. Licensors of intellectual property to Nortel Networks are beneficiaries of this provision. Upon termination or breach of the license by Customer or in the event designated hardware or CFE is no longer in use, Customer will promptly return the Software to Nortel Networks or certify its destruction. Nortel Networks may audit by remote polling or other reasonable means to determine Customer’s Software activation or usage levels. If suppliers of third party software included in Software require Nortel Networks to include additional or different terms, Customer agrees to abide by such terms provided by Nortel Networks with respect to such third party software.

**2. Warranty.** Except as may be otherwise expressly agreed to in writing between Nortel Networks and Customer, Software is provided “AS IS” without any warranties (conditions) of any kind. NORTEL NETWORKS DISCLAIMS ALL WARRANTIES (CONDITIONS) FOR THE SOFTWARE, EITHER EXPRESS OR IMPLIED, INCLUDING, BUT NOT LIMITED TO THE IMPLIED WARRANTIES OF MERCHANTABILITY AND FITNESS FOR A PARTICULAR PURPOSE AND ANY WARRANTY OF NON-INFRINGEMENT. Nortel Networks is not obligated to provide support of any kind for the Software. Some jurisdictions do not allow exclusion of implied warranties, and, in such event, the above exclusions may not apply.

**3. Limitation of Remedies.** IN NO EVENT SHALL NORTEL NETWORKS OR ITS AGENTS OR SUPPLIERS BE LIABLE FOR ANY OF THE FOLLOWING: a) DAMAGES BASED ON ANY THIRD PARTY CLAIM; b) LOSS OF, OR DAMAGE TO, CUSTOMER’S RECORDS, FILES OR DATA; OR c) DIRECT, INDIRECT, SPECIAL, INCIDENTAL, PUNITIVE, OR CONSEQUENTIAL DAMAGES (INCLUDING LOST PROFITS OR SAVINGS), WHETHER IN CONTRACT, TORT OR OTHERWISE (INCLUDING NEGLIGENCE) ARISING OUT OF YOUR USE OF THE SOFTWARE, EVEN IF NORTEL NETWORKS, ITS AGENTS OR SUPPLIERS HAVE BEEN ADVISED OF THEIR POSSIBILITY. The foregoing limitations of remedies also apply to any developer and/or supplier of the Software. Such developer and/or supplier is an intended beneficiary of this Section. Some jurisdictions do not allow these limitations or exclusions and, in such event, they may not apply.

### 4. General

- a. If Customer is the United States Government, the following paragraph shall apply: All Nortel Networks Software available under this License Agreement is commercial computer software and commercial computer software documentation and, in the event Software is licensed for or on behalf of the United States

Government, the respective rights to the software and software documentation are governed by Nortel Networks standard commercial license in accordance with U.S. Federal Regulations at 48 C.F.R. Sections 12.212 (for non-DoD entities) and 48 C.F.R. 227.7202 (for DoD entities).

- b. Customer may terminate the license at any time. Nortel Networks may terminate the license if Customer fails to comply with the terms and conditions of this license. In either event, upon termination, Customer must either return the Software to Nortel Networks or certify its destruction.
- c. Customer is responsible for payment of any taxes, including personal property taxes, resulting from Customer's use of the Software. Customer agrees to comply with all applicable laws including all applicable export and import laws and regulations.
- d. Neither party may bring an action, regardless of form, more than two years after the cause of the action arose.
- e. The terms and conditions of this License Agreement form the complete and exclusive agreement between Customer and Nortel Networks.
- f. This License Agreement is governed by the laws of the country in which Customer acquires the Software. If the Software is acquired in the United States, then this License Agreement is governed by the laws of the state of New York.

---

# Contents

---

New features of Enterprise Switch Manager 5.0 .....	7
Scalability and performance .....	7
Serviceability and network management .....	7
Security .....	8
New features of the ESM 5.0 submanagers .....	10
Multicast Manager .....	10
VLAN Manager .....	11
File and Inventory Manager .....	11
Topology Manager .....	12
Trap and Log Manager .....	12
Management Information Base (MIB) Browser .....	13
Security Manager .....	15
Compatibility .....	17
Operating system compatibility .....	17
Supported devices and software versions .....	17
Upgrading and downgrading ESM on your system .....	19
Upgrading to ESM 5.0 .....	19
Downgrading from ESM, software release 5.0.0.0 .....	19
Understanding the issues in ESM 5.0.0.0 .....	20
Known issues in ESM 5.0 .....	20
Resolved issues in ESM 5.0 .....	21
Related publications .....	23
How to get help .....	24
Getting Help from the Nortel web site .....	24
Getting Help through a Nortel distributor or reseller .....	24
Getting Help over the phone from a Nortel Solutions Center .....	24
Getting Help from a specialist by using an Express Routing Code .....	25



---

## New features of Enterprise Switch Manager 5.0

This section summarizes the new features of the Nortel Enterprise Switch Manager (ESM), software release 5.0.0.0.

### Scalability and performance

- editable Virtual LAN (VLAN) Internet Protocol (IP) address
- ability to add/delete members from an existing STG
- drop-down list in Multicast Manager
- support for Ethernet Routing Switch 1600 in Multicast Manager

### Serviceability and network management

- Trap Receiver and Log Manager combined into Trap and Log Manager.
- improved Log Manager to receive real time sysLog.
- improved notification message about absence of config/boot.cfg files for backup
- single port SMLT support
- MIB Browser
- support for the Nortel standard for color blindness

## Security

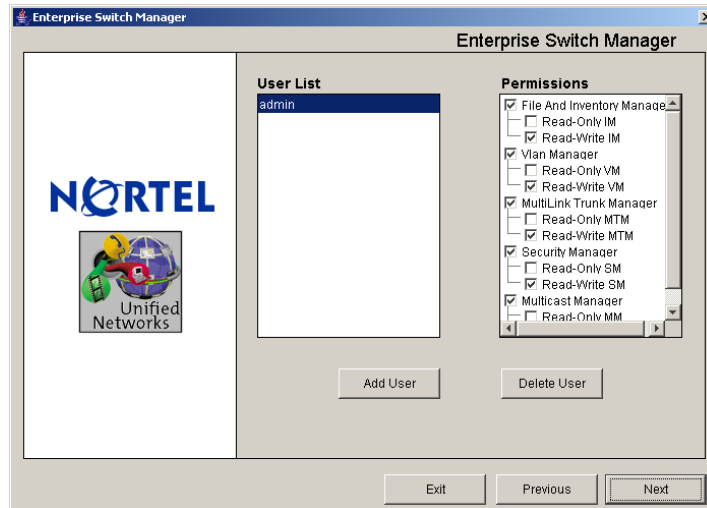
- application security using Login dialog box (See [Figure 1.](#))

**Figure 1** Login dialog box



- user management, Access Level control (See [Figure 2.](#))

**Figure 2** Manage User dialog box



- e-mail notification if unauthorized access is detected.



- 
- ability to configure and manage the following Simple Network Management Protocol (SNMPv3) objects:
    - user-Based Security Model (USM) support. Support configuration for USM tables (includes usmUserTable). Advanced Encryption Standard (AES) added for privacy support.
    - View Access Control Mode (VACM) support for MIB Access Control. Support VACM tables configuration (includes vacmSecurityToGroupTable, vacmAccessTable and vacmViewTreeFamilyTable).
    - notification (trap and inform) support
    - SSH Bulk Password configuration has been moved into Security Manager.
    - Digital Signature Algorithm (DSA) and Rivest-Shamir-Adleman (RSA) added for authentication support.
    - for SSH Bulk Password configuration, added scheduler support

## New features of the ESM 5.0 submanagers

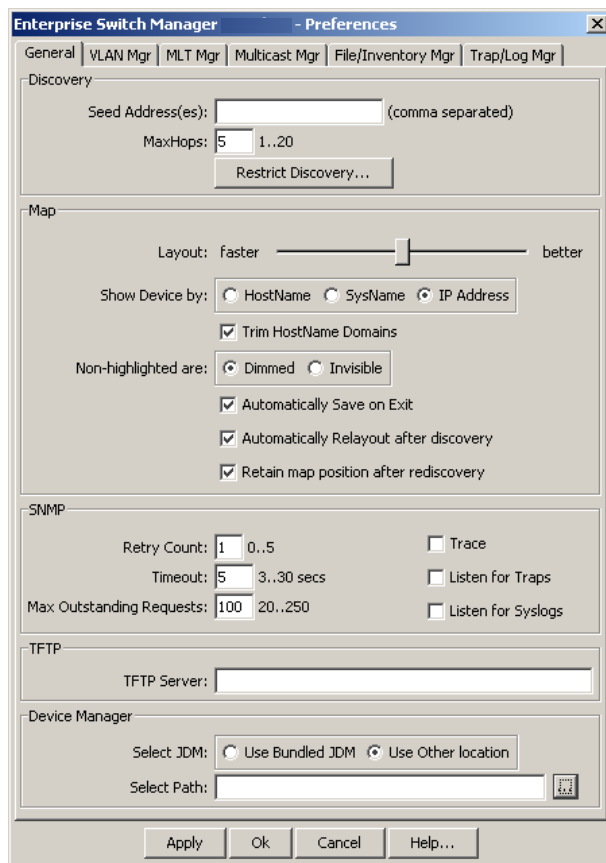
This section summarizes the new features for each submanager in ESM 5.0

### Multicast Manager

New features of the Multicast Manager for ESM 5.0.0.0 include the following:

- Ethernet Routing Switch 8000 devices support
- IGMP and IGMP Snoop
- drop-down list
- preferences dialog box in the Edit menu (See [Figure 3.](#))

**Figure 3** Preferences dialog box

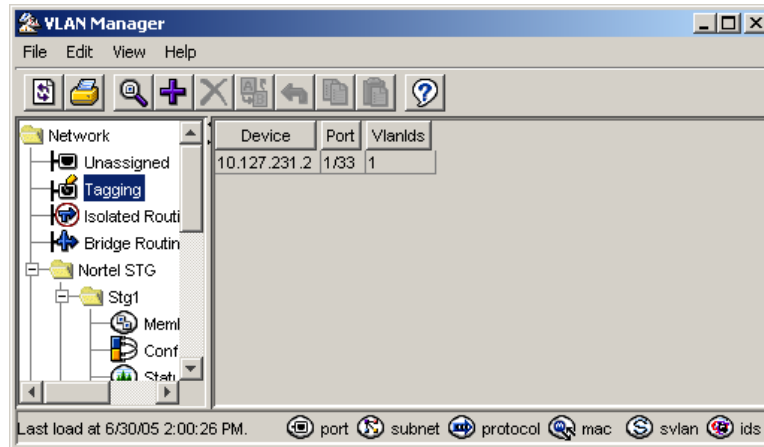


## VLAN Manager

New features of the VLAN Manager include the following:

- new user interface (See [Figure 4.](#))

**Figure 4** VLAN Manager user interface



- Additional support for the following features:
  - sVLAN and VLANs byId
  - Multiple Spanning Tree Protocol (MSTP) and Rapid Spanning Tree Protocol (RSTP) for Ethernet Switches 325, 425, 460, and 470.
- ability to add or delete members from an existing spanning tree
- ability to edit a VLAN IP address
- preferences dialog box in the Edit menu

## File and Inventory Manager

New features of the File and Inventory Manager include the following:

- improved notification message about the absence of config/boot.cfg files for backup now supported on the ERS 8000 Series
- support for AAS 2424 SSL switches

## Topology Manager

New features of the Topology Manager include the following:

- adherence to the Nortel color blindness standard
- ability to configure the Storage Directory for Topology and Inventory
- ability to save the SNMP community as a profile and reload

## Trap and Log Manager

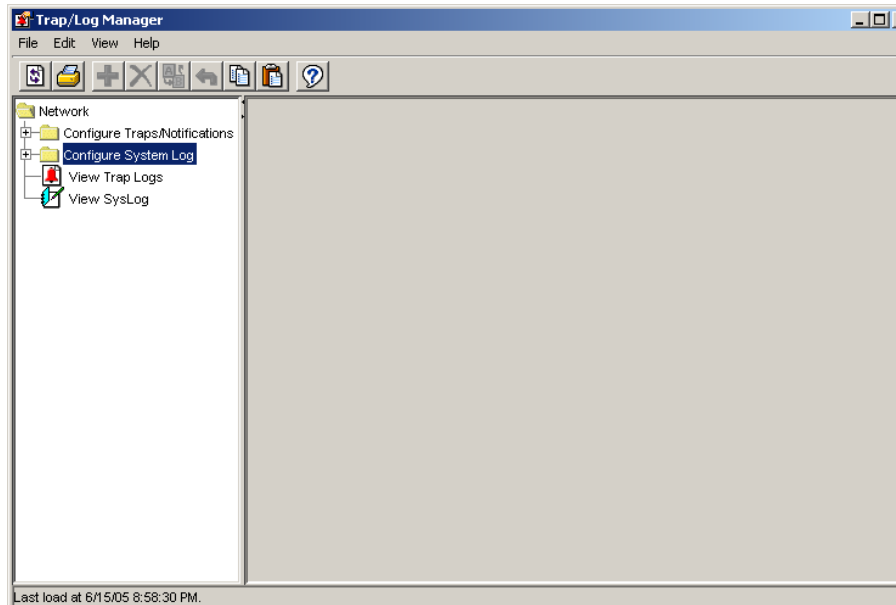
New features in the Trap and Log Manager include the following:

- functionality of the original Trap Receiver and Log Manager are combined, with added trap/notification configuration and syslog configuration

To access Trap and Log Manager, click >Tools >Trap and Log Manager or click on the toolbar icon.

The Trap and Log Manager main window opens. (See [Figure 5](#).)

**Figure 5** Trap and Log Manager main window



To create real time syslog information, configure devices in a SyslogAdd dialog box with the following parameters:

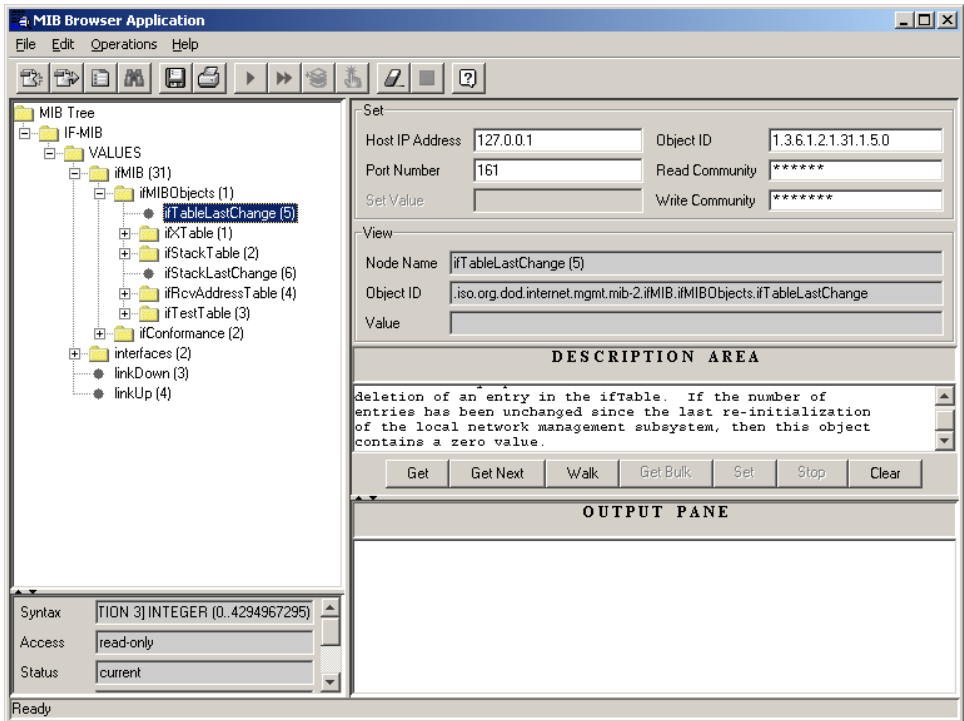
- IPAddress
- Severity
- Facility
- udp-port
- state

## Management Information Base (MIB) Browser

This new robust network management tool includes the following features:

- multi-lingual support for SNMPv1, SNMPv2c and SNMPv3 protocols over UDP
- SNMP operations support for GET, GET-NEXT, GET-BULK, and SET
- multi-varbind support for grouping multiple OIDs in a single request in SNMP Protocol operations
- support for loading and unloading of MIBs dynamically
- support for SNMP Walk; gets the values of SNMP Variables in the MIB subtree (See [Figure 6 on page 14.](#))

Figure 6 MIB Browser user interface

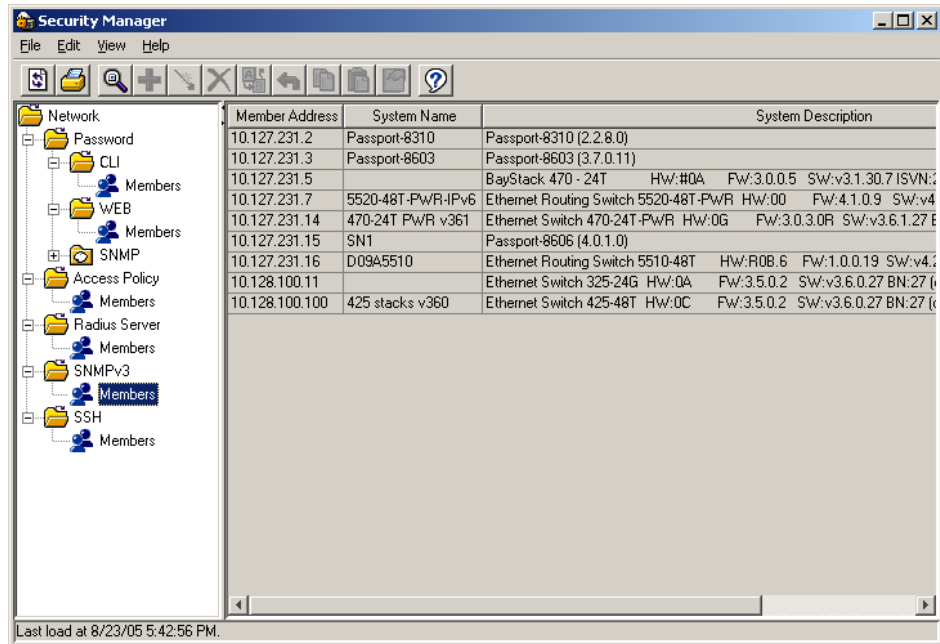


## Security Manager

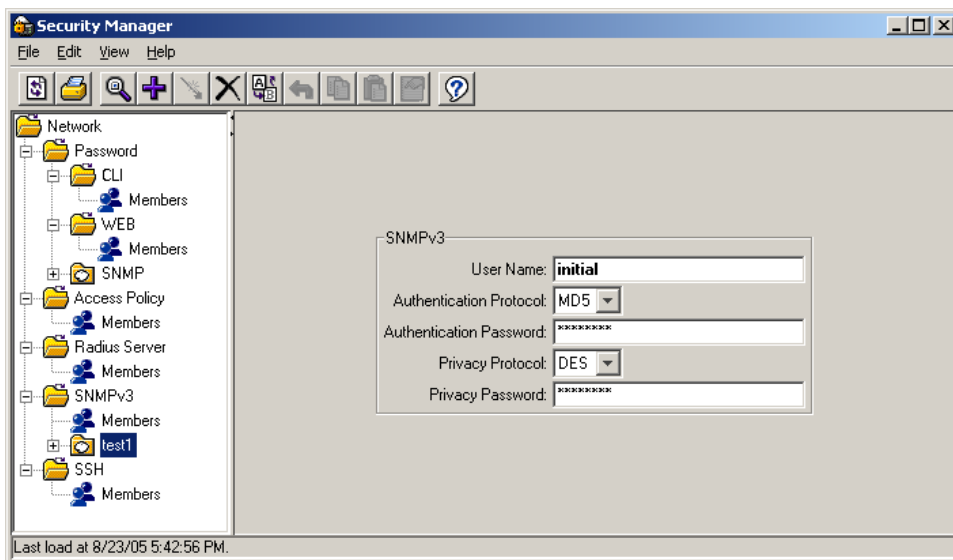
New features in the Security Manager include the following:

- user interface (UI) (See [Figure 7](#).)

**Figure 7** Security Manager User Interface



- CLI, WEB password and SNMP community management have a similar user interface. The Members node lists the devices capable of supporting this feature. New groups can be created and devices placed into groups. Each device can only be in one group.
- devices in the same group use the same SNMPv1/v2c or SNMPv3 parameters.
- ability to configure and manage SNMPv3 tables with a new user interface (See [Figure 8](#) on page 16.)

**Figure 8** SNMPv3 user interface

- ability to configure and manage USM, with the usmUserTable. The privacy protocol will support CBC-DES and CFB128-AES-128
- ability to configure, and manage VACM support, including the vacmSecurityToGroupEntry, vacmAccessTable and vacmViewTreeFamilyTable
- ability to configure, and manage the snmpCommunityTable, snmpTargetAddrTable, snmpTargetParamsTable and snmpNotifyTable
- ability to configure SSH Bulk Password with the move from Topology Manager to Security Manager
- ability to configure SSH Bulk Password with scheduler support



# Compatibility

This section lists operating systems, hardware, and software that are compatible with ESM 5.0.

## Operating system compatibility

[Table 1](#) contains the list of operating systems that are compatible with ESM 5.0.

**Table 1** ESM 5.0.0.0 compatibility matrix for operating systems

Operating system	Version	File type
Windows	95, 98, NT, 2000, XP, 2003	esm_5000.exe
Linux	Kernel version 2.2 and above	esm_5000_linux.sh
Sun Solaris/SunOS	2.7, 2.8, 2.9/5.7, 5.8, 5.9	esm_5000_solaris.sh

## Supported devices and software versions

[Table 2](#) lists the devices and software versions that ESM 5.0 currently supports.

**Table 2** Supported platforms and software releases

Platform	Software release
Ethernet Routing Switch 8600, including the following new hardware: 8681XLW module, 8681XLR module, 8616GTE module, 8672ATME MDA, 8608GBM module, 8608GTM module, 8632TXM module, 8648TXM module, 8672ATMM module, 8683POSM module.	3.0, 3.0.x, 3.1.x, 3.2.0, 3.2.0.2, 3.2.1.0, 3.2.2 (OSM 2.0), 3.3 (OSM 3.0), 3.5, 3.7 (OSM 4.0) 4.0 (ESM 5.0)
Ethernet Routing Switch 8600 Web Switching Module	WebOS 9.x (OSM 2.0), 10.0.x (OSM 3.0)
Ethernet Routing Switch 8100	2.0, 2.0.1.1, 3.1.x, 3.2.0, 3.2.0.2, 3.2.1.0, 3.2.2 (OSM 2.0), 3.3 (OSM 3.0)
Ethernet Routing Switch 8300	2.0 (OSM 4.0) 2.1, 2.2 (ESM 5.0)
Passport 1050/1150/1200/1250	2.0.5.6, 2.0.5.7, 2.0.7.2, 2.0.7.3, 2.0.7.4, 2.1.0, 2.1.3 (OSM 2.0, OSM 3.0)

**Table 2** Supported platforms and software releases (continued)

<b>Platform</b>	<b>Software release</b>
Ethernet Routing Switch 1424T	2.1 (OSM 3.0)
Ethernet Routing Switch 1612G, 1624G, 1648T	1.0 (OSM 3.0), 1.1 (OSM 4.0) 1.2 (ESM 5.0)
BayStack 350/410/450	3.0, 3.1, 4.0, 4.1 (OSM 2.0), 4.2, 4.3, 4.4 (OSM 3.0)
Business Policy Switch 2000	1.0 (OSM 1.0), 1.0.1, 1.1, 1.2, 2.x (OSM 2.0), 3.0 (OSM 3.0), 3.1 (OSM 4.0)
BayStack 380-24 T	2.0 (OSM 3.0), 3.0 (OSM 4.0)
BayStack 380-24 F	2.1.0 (OSM 3.0), 3.0 (OSM 4.0)
BayStack 420	1.0 (OSM 1.0), 1.0.2, 1.1 (OSM 2.0), 1.1.1, 1.1.2, 1.1.3 (OSM 3.0), 3.0 (OSM 4.0), 3.1 (OSM 4.1)
Ethernet Switch 460	2.3, 3.0 (OSM 3.0), 3.1 (OSM 4.0), 3.5 (OSM 4.1), 3.6 (ESM 5.0)
Ethernet Switch 470-24 T	3.0 (OSM 3.0), 3.0 (OSM 4.0), 3.1 (OSM 4.0), 3.5 (OSM 4.1), 3.6 (ESM 5.0)
Ethernet Switch 470-48 T	2.1.0 (only standalone supported); 2.2.0, 2.2.1 (stack also supported), 3.0, 3.0 (OSM 4.0), 3.1 (OSM 4.0), 3.5 (OSM 4.1), 3.6 (ESM 5.0)
Ethernet Switch 425-24T	2.0, 3.0 (OSM 3.0), 3.0 (OSM 4.0), 3.1 (OSM 4.0), 3.5 (ESM 5.0)
Ethernet Switch 425-48T	3.1 (OSM 4.0), 3.5 (ESM 5.0)
Ethernet Routing Switch 5510, 5520	3.0, 3.0.0.1 (OSM 3.0), 3.0 (OSM 4.0), 4.0 (OSM 4.0), 4.1 (OSM 4.1), 4.2 (ESM 5.0)
Ethernet Routing Switch 5530	4.2 (ESM 5.0)
Ethernet Routing Switch 3510	4.0 (ESM 5.0)
OPTera Metro 1200/1400/1450	1.0, 1.2 (OSM 3.0), 1.3 (OSM 4.0)
Alteon 2208, 2216, 2224, 2424, 2424 SSL, 3408, 3416	AOS 21.0
WLAN AP	1.3 (OSM 4.0)

---

## Upgrading and downgrading ESM on your system

This section lists step-by-step instructions on how to upgrade to ESM 5.0 and how to downgrade to previous versions of the software.

### Upgrading to ESM 5.0

To upgrade to ESM, software release 5.0.0.0, complete the following steps.

- 1 Install ESM 5.0.0.0 in a separate directory.
- 2 Launch ESM 5.0.0.0.
- 3 To migrate existing scheduled tasks from previous software versions of ESM (3.0, 4.0, 4.1), use the Scheduled Tasks Upgrade Utility feature.

**Note:** To ensure that scheduled tasks have migrated successfully, open and test ESM 5.0.0.0.

- 4 Uninstall previous versions of ESM (3.0, 4.0, 4.1).

### Downgrading from ESM, software release 5.0.0.0

To downgrade from ESM 5.0.0.0 to a previous version, complete the following steps:

- 1 Uninstall ESM 5.0.0.0.
- 2 Create a new directory.
- 3 Install the previous version (4.1) of ESM.

## Understanding the issues in ESM 5.0.0.0

This section describes the known issues and resolved issues in ESM 5.0.

### Known issues in ESM 5.0

#### Topology Manager

- Discovered network may show an extra hub between directly connected devices (Q01194082).
- When BS380 is used as a seed device, ESM may not display all devices in the topology (Q01120787).
- When ESM discovers two separate subnets, the topology map may overlap the display of the two subnets (Q01128155).
- If ESM display is set to by SysName in the Preferences dialog box and a device's name is changed to a longer name, the new name may extend beyond the borders of the name text box after rediscovery (Q01196081).

Workaround: First clear the map, then rediscover the devices. The new name displays correctly.

- Currently, ESM topology files (.topo) can only be recognized within the same software version. For example, .topo files created in Release 4.1 can only be opened by OSM 4.1, and .topo files created in Release 5.0 can only be opened by ESM 5.0 (Q00955340).

#### VLAN Manager

- For VLAN Manager, you will be unable to add or delete untagged ports to VLAN for 16xx-1424 (Q00966591).

**Note:** This issue will be removed in version 2.0 of the 1600 software release. No update will be needed for ESM.

- With ESM 5.0, the user can only set VLAN tagging mode as Untag or Tag. However, Ethernet Routing Switch 55xx, Ethernet Switch 460/470, and BPS 2000 have four options: UntagAll, TagAll, UntagPVIDOnly, TagPVIDOnly (Q00854330).

- 
- For Ethernet Switch devices, STG priority must be a multiple of 4096. If a number other than a multiple of 4096 is entered in the STG priority field, the switch rounds the value down to the nearest multiple of 4096. No warning message is provided (Q01140840).
  - When displaying tagged ports information in the Tagging Ports Table, extra VLANs may appear in the VlanIds column (Q00959184).

### **MLT Manager**

- LACP configuration is not supported in ESM 5.0 (Q01165408).

### **Trap/Log Manager**

- In the target Addr Table, MMS and Mask fields do not display. Also, the timeout and retry fields currently do not provide default values. Values must be specified in these fields before applying changes (Q01173299).

Workaround: Configure using Device Manager.

### **Security Manager**

- ESM 5.0 SSH function may not work correctly with ERS 8000 software versions 3.7.7 to 3.7.9. This is due to ERS 8000 device issues that have been resolved in 3.7.10 (Q01169759).

## **Resolved issues in ESM 5.0**

### **Security Manager**

- You will not receive an error message for multiple SNMPv3 when changing settings (Q00955684).
- You will receive the message: JavaException, while discovering a SNMPv3 configured device (Q0999450).

### **VLAN Manager**

- You cannot add new ports to Notallowedtojoin list unless you reload the VM (Q1001595).
- You will receive an error message when you select tagging after you insert a port into a port-vlan.

## **Multicast Manager**

- You can add Candidate RP (Q00973261).
- You can add a cosmetic display of map after deleting node devices and rediscovering them (Q00975122).
- You can enable the Apply/Undo button after you cancel the Add Table Row operation (Q00989803).

## **MultiLink Trunking Manager**

When you change the Port type for ERS 8600, you will receive a Java exception error (Q1000215).

## **Topology Manager**

- You cannot save the topology file when you use the Save As Tab (Q01001456).
- You cannot use the discover map with 3 seeds, with first seed invalid and restrict discover set (Q1005016).

---

## Related publications

For additional information about the features in Enterprise Switch Manager 5.0, refer to the following publications:

- *Using Enterprise Switch Manager, release 5.0.0.0* (208963-F)
- *Configuring and Managing Security for Nortel Ethernet Routing Switch 5500 Series, release 4.2.x* (217463-B)
- *Release Notes for Nortel Ethernet Routing Switch, release 4.2.x* (217468-B)
- *Configuring and Managing Security using NNCLI and CLI for the Ethernet Routing Switch 8300, release 2.2.x* (316804-C)
- *Configuring and Managing Security using Device Manager for the Ethernet Routing Switch 8300, release 2.2.x* (317346-C)
- *Release Notes for the Ethernet Routing Switch 8300, release 2.2.x* (318844-B)
- *Configuring IP Routing Protocols for Nortel Ethernet Routing Switch 5500 Series, Software Release 4.2* (217465-A)
- *Configuring and Managing Security for Nortel Ethernet Routing Switch 5500 Series, Software Release 4.2* (217463-A)
- *Configuring VLANs, Spanning Tree, and Multilink Trunking for Nortel Ethernet Routing Switch 5500 Series, Software Release 4.2* (217464-A)
- *Configuring and Managing Security: Nortel Ethernet Switches 460 and 470 Software Release 3.6* (217104-A)
- *Configuring VLANs, Spanning Tree, and MultiLink Trunking: Nortel Ethernet Switches 460 and 470 Software Release 3.6* (217460-A)
- *Reference for the BayStack 350/410/450 Management Software Operations Version 5.0* (210245-C)
- *Networking Concepts for the Passport 1000 Series Switch* (205588-B)
- *Reference for the Passport 1000 Series Management Software Switching Operations, Release 2.1* (211192-A)
- *Reference for the Passport 1000 Series Management Software Routing Operations, Release 2.1* (211193-A)

## How to get help

This section explains how to get help for Nortel products and services.

### Getting Help from the Nortel web site

The best way to get technical support for Nortel products is from the Nortel Technical Support web site:

[www.nortel.com/support](http://www.nortel.com/support)

This site provides quick access to software, documentation, bulletins, and tools to address issues with Nortel products. More specifically, the site enables you to:

- download software, documentation, and product bulletins
- search the Technical Support web site and the Nortel Knowledge Base for answers to technical issues
- sign up for automatic notification of new software and documentation for Nortel equipment
- open and manage technical support cases

### Getting Help through a Nortel distributor or reseller

If you purchased a service contract for your Nortel product from a distributor or authorized reseller, contact the technical support staff for that distributor or reseller.

### Getting Help over the phone from a Nortel Solutions Center

If you do not find the information you require on the Nortel Technical Support web site, and have a Nortel support contract, you can also get help over the phone from a Nortel Solutions Center.

In North America, call 1-800-4NORTEL (1-800-466-7865).



Outside North America, go to the following web site to obtain the phone number for your region:

[www.nortel.com/callus](http://www.nortel.com/callus)

## **Getting Help from a specialist by using an Express Routing Code**

An Express Routing Code (ERC) is available for many Nortel products and services. When you use an ERC, your call is routed to a technical support person who specializes in supporting that product or service. To locate the ERC for your product or service, go to:

[www.nortel.com/erc](http://www.nortel.com/erc)

