

Part No. 209960-H
December 2005

4655 Great America Parkway
Santa Clara, CA 95054

Release Notes for Enterprise Switch Manager Release 5.1.0.0



NORTEL

Copyright © 2005 Nortel Networks. All rights reserved.

The information in this document is subject to change without notice. The statements, configurations, technical data, and recommendations in this document are believed to be accurate and reliable, but are presented without express or implied warranty. Users must take full responsibility for their applications of any products specified in this document. The information in this document is proprietary to Nortel Networks.

The software described in this document is furnished under a license agreement and may be used only in accordance with the terms of that license. The software license agreement is included in this document.

Trademarks

Nortel Networks, the Nortel Networks logo, the Globemark, Unified Networks, Passport, and BayStack are trademarks of Nortel Networks.

Adobe and Acrobat Reader are trademarks of Adobe Systems Incorporated.

Microsoft, Windows, and Windows NT are trademarks of Microsoft Corporation.

The asterisk after a name denotes a trademarked item.

Restricted rights legend

Use, duplication, or disclosure by the United States Government is subject to restrictions as set forth in subparagraph (c)(1)(ii) of the Rights in Technical Data and Computer Software clause at DFARS 252.227-7013.

Notwithstanding any other license agreement that may pertain to, or accompany the delivery of, this computer software, the rights of the United States Government regarding its use, reproduction, and disclosure are as set forth in the Commercial Computer Software-Restricted Rights clause at FAR 52.227-19.

Statement of conditions

In the interest of improving internal design, operational function, and/or reliability, Nortel Networks reserves the right to make changes to the products described in this document without notice.

Nortel Networks does not assume any liability that may occur due to the use or application of the product(s) or circuit layout(s) described herein.

Portions of the code in this software product may be Copyright © 1988, Regents of the University of California. All rights reserved. Redistribution and use in source and binary forms of such portions are permitted, provided that the above copyright notice and this paragraph are duplicated in all such forms and that any documentation, advertising materials, and other materials related to such distribution and use acknowledge that such portions of the software were developed by the University of California, Berkeley. The name of the University may not be used to endorse or promote products derived from such portions of the software without specific prior written permission.

SUCH PORTIONS OF THE SOFTWARE ARE PROVIDED "AS IS" AND WITHOUT ANY EXPRESS OR IMPLIED WARRANTIES, INCLUDING, WITHOUT LIMITATION, THE IMPLIED WARRANTIES OF MERCHANTABILITY AND FITNESS FOR A PARTICULAR PURPOSE.

In addition, the program and information contained herein are licensed only pursuant to a license agreement that contains restrictions on use and disclosure (that may incorporate by reference certain limitations and notices imposed by third parties).

Nortel Networks software license agreement

This Software License Agreement (“License Agreement”) is between you, the end-user (“Customer”) and Nortel Networks Corporation and its subsidiaries and affiliates (“Nortel Networks”). PLEASE READ THE FOLLOWING CAREFULLY. YOU MUST ACCEPT THESE LICENSE TERMS IN ORDER TO DOWNLOAD AND/OR USE THE SOFTWARE. USE OF THE SOFTWARE CONSTITUTES YOUR ACCEPTANCE OF THIS LICENSE AGREEMENT. If you do not accept these terms and conditions, return the Software, unused and in the original shipping container, within 30 days of purchase to obtain a credit for the full purchase price.

“Software” is owned or licensed by Nortel Networks, its parent or one of its subsidiaries or affiliates, and is copyrighted and licensed, not sold. Software consists of machine-readable instructions, its components, data, audio-visual content (such as images, text, recordings or pictures) and related licensed materials including all whole or partial copies. Nortel Networks grants you a license to use the Software only in the country where you acquired the Software. You obtain no rights other than those granted to you under this License Agreement. You are responsible for the selection of the Software and for the installation of, use of, and results obtained from the Software.

1. Licensed Use of Software. Nortel Networks grants Customer a nonexclusive license to use a copy of the Software on only one machine at any one time or to the extent of the activation or authorized usage level, whichever is applicable. To the extent Software is furnished for use with designated hardware or Customer furnished equipment (“CFE”), Customer is granted a nonexclusive license to use Software only on such hardware or CFE, as applicable. Software contains trade secrets and Customer agrees to treat Software as confidential information using the same care and discretion Customer uses with its own similar information that it does not wish to disclose, publish or disseminate. Customer will ensure that anyone who uses the Software does so only in compliance with the terms of this Agreement. Customer shall not a) use, copy, modify, transfer or distribute the Software except as expressly authorized; b) reverse assemble, reverse compile, reverse engineer or otherwise translate the Software; c) create derivative works or modifications unless expressly authorized; or d) sublicense, rent or lease the Software. Licensors of intellectual property to Nortel Networks are beneficiaries of this provision. Upon termination or breach of the license by Customer or in the event designated hardware or CFE is no longer in use, Customer will promptly return the Software to Nortel Networks or certify its destruction. Nortel Networks may audit by remote polling or other reasonable means to determine Customer’s Software activation or usage levels. If suppliers of third party software included in Software require Nortel Networks to include additional or different terms, Customer agrees to abide by such terms provided by Nortel Networks with respect to such third party software.

2. Warranty. Except as may be otherwise expressly agreed to in writing between Nortel Networks and Customer, Software is provided “AS IS” without any warranties (conditions) of any kind. NORTEL NETWORKS DISCLAIMS ALL WARRANTIES (CONDITIONS) FOR THE SOFTWARE, EITHER EXPRESS OR IMPLIED, INCLUDING, BUT NOT LIMITED TO THE IMPLIED WARRANTIES OF MERCHANTABILITY AND FITNESS FOR A PARTICULAR PURPOSE AND ANY WARRANTY OF NON-INFRINGEMENT. Nortel Networks is not obligated to provide support of any kind for the Software. Some jurisdictions do not allow exclusion of implied warranties, and, in such event, the above exclusions may not apply.

3. Limitation of Remedies. IN NO EVENT SHALL NORTEL NETWORKS OR ITS AGENTS OR SUPPLIERS BE LIABLE FOR ANY OF THE FOLLOWING: a) DAMAGES BASED ON ANY THIRD PARTY CLAIM; b) LOSS OF, OR DAMAGE TO, CUSTOMER’S RECORDS, FILES OR DATA; OR c) DIRECT, INDIRECT, SPECIAL, INCIDENTAL, PUNITIVE, OR CONSEQUENTIAL DAMAGES (INCLUDING LOST PROFITS OR SAVINGS), WHETHER IN CONTRACT, TORT OR OTHERWISE (INCLUDING NEGLIGENCE) ARISING OUT OF YOUR USE OF THE SOFTWARE, EVEN IF NORTEL NETWORKS, ITS AGENTS OR SUPPLIERS HAVE BEEN ADVISED OF THEIR POSSIBILITY. The foregoing limitations of remedies also apply to any developer and/or supplier of the Software. Such developer and/or supplier is an intended beneficiary of this Section. Some jurisdictions do not allow these limitations or exclusions and, in such event, they may not apply.

4. General

- a. If Customer is the United States Government, the following paragraph shall apply: All Nortel Networks Software available under this License Agreement is commercial computer software and commercial computer software documentation and, in the event Software is licensed for or on behalf of the United States

Government, the respective rights to the software and software documentation are governed by Nortel Networks standard commercial license in accordance with U.S. Federal Regulations at 48 C.F.R. Sections 12.212 (for non-DoD entities) and 48 C.F.R. 227.7202 (for DoD entities).

- b. Customer may terminate the license at any time. Nortel Networks may terminate the license if Customer fails to comply with the terms and conditions of this license. In either event, upon termination, Customer must either return the Software to Nortel Networks or certify its destruction.
- c. Customer is responsible for payment of any taxes, including personal property taxes, resulting from Customer's use of the Software. Customer agrees to comply with all applicable laws including all applicable export and import laws and regulations.
- d. Neither party may bring an action, regardless of form, more than two years after the cause of the action arose.
- e. The terms and conditions of this License Agreement form the complete and exclusive agreement between Customer and Nortel Networks.
- f. This License Agreement is governed by the laws of the country in which Customer acquires the Software. If the Software is acquired in the United States, then this License Agreement is governed by the laws of the state of New York.

Contents

New features of Enterprise Switch Manager 5.1	7
Ability to access SREM for NSNAS	7
New features of the ESM 5.1 submanagers	8
Compatibility	13
Operating system compatibility	13
Supported devices and software versions	13
Upgrading and downgrading ESM on your system	15
Upgrading to ESM 5.1	15
Downgrading from ESM, software release 5.1.0.0	15
Understanding the issues in ESM 5.1.0.0	16
Known issues in ESM 5.1	16
Outstanding issues from ESM 5.0	17
Resolved issues in ESM 5.1	18
Related publications	19
How to get help	20
Getting Help from the Nortel web site	20
Getting Help through a Nortel distributor or reseller	20
Getting Help over the phone from a Nortel Solutions Center	20
Getting Help from a specialist by using an Express Routing Code	21

New features of Enterprise Switch Manager 5.1

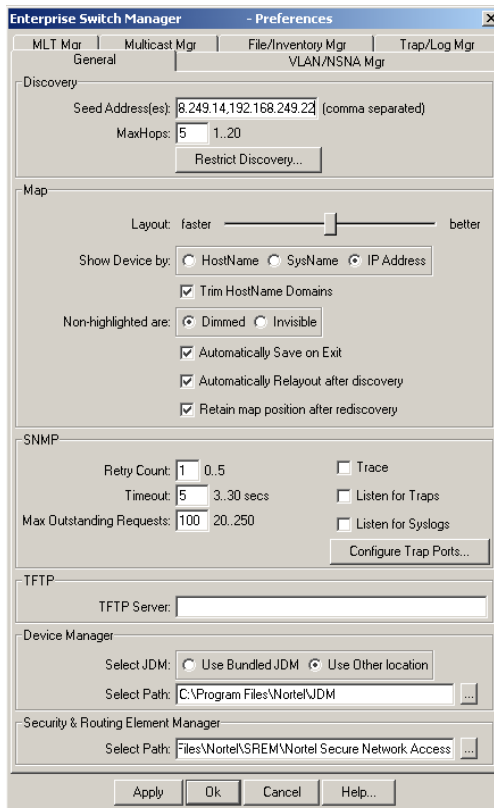
This section summarizes the new features of the Nortel Enterprise Switch Manager (ESM), software release 5.1.0.0.

Ability to access SREM for NSNAS

With ESM 5.1, you can open the Security & Routing Element Manager (SREM) for the Nortel Secure Network Access Switch (NSNAS) by double-clicking the **NSNAS** icon from the topology view. For this action to complete successfully, you must do the following:

- 1 Specify the correct path to the folder containing the SREM software in the updated ESM **Preferences** dialog box (see [Figure 1](#)).

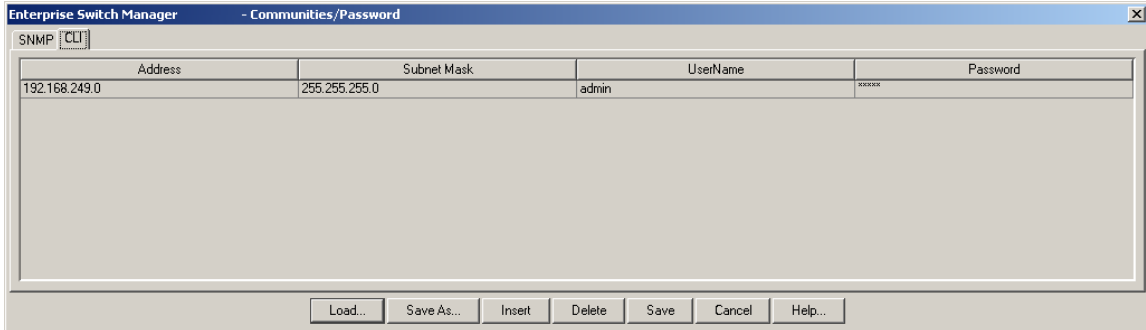
Figure 1 Preferences dialog box



- 2 If the NSNAS CLI user name and password are not the default values (admin/admin), specify the updated user name and password in the **CLI** tab of the new **Communities/Password** dialog box (see [Figure 2](#)).

To access the **Communities/Password** dialog box from the ESM menu bar, choose **Edit > Communities/Password**.

Figure 2 CLI tab



New features of the ESM 5.1 submanagers

This section summarizes the new features for each submanager in ESM 5.1.

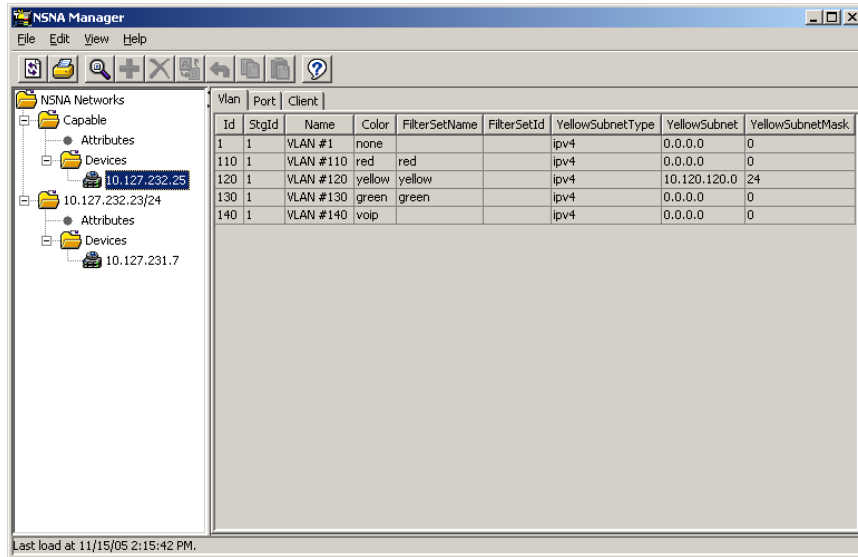
NSNA Manager

NSNA Manager is a new ESM submanager that allows you to configure Notel Secure Network Access (NSNA) features for Ethernet Routing Switch 8300 and Ethernet Routing Switch 55xx devices.

To access NSNA Manager from ESM, click **Tools > NSNA Manager**, or click on the NSNA Manager icon from the toolbar.

The NSNA Manager main window opens. (See [Figure 3](#).)

Figure 3 NSNA Manager main window



NSNA Manager allows you to:

- Configure the NSNAS subnet
- Enable NSNA on a device
- Enable NSNA on ports
- Enter IP Phone Signatures for NSNA
- Display information on NSNA clients
- Display NSNA VLANs

NSNA Manager does not allow you to configure VLAN properties. To configure NSNA VLAN properties, you must use VLAN Manager.

For detailed information about the NSNA solution and deployment scenarios, refer to *Nortel Secure Network Access Solution Guide (320817-A)*. For information about configuring the NSNAS, refer to *Nortel Secure Network Access Switch 4050 User Guide (320818-A)*. For switch-specific configuration information, refer to your switch documentation.

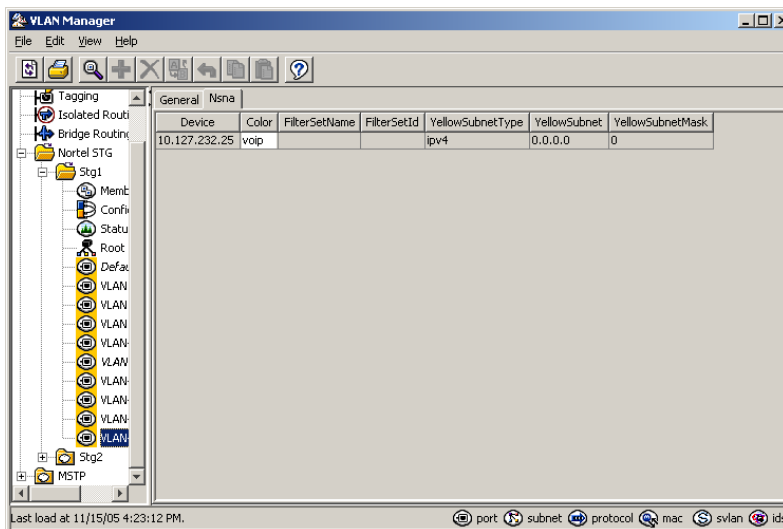
VLAN Manager

With ESM 5.1, the VLAN Manager provides the ability to configure NSNA VLANs for Ethernet Routing Switch 8300 and Ethernet Routing Switch 55xx devices.

To access the Nsna tab in VLAN Manager, select a VLAN, and click the **Nsna** tab.

The Nsna tab opens (see [Figure 4](#)).

Figure 4 VLAN Manager - Nsna tab



File and Inventory Manager

With ESM 5.1, the File and Inventory Manager now provides an Upgrade Wizard for upgrading Ethernet Routing Switch 8000 Series devices ([Figure 5](#)).

Figure 5 Upgrade Wizard

File/Inventory Manager - Auto Upgrade Wizard

Config BackUp Saves a copy of the configuration file to a specified location

Configuration files: boot.cfg config.cfg

BackUp files in: flash TFTP Server

TFTP Server:

In FLASH Save Bootconfig As: ESM_AutoImageUpgrade_boot.cfg

In FLASH Save Config As: ESM_AutoImageUpgrade_config.cfg

Image Options Saves the primary runtime image and boots the device

CLI UserName:

CLI Password:

Show image files in: flash PCMCIA TFTP Server

TFTP Server:

Device	Primary Image	Boot Image	DId Image
10.227.231.3			
10.227.231.2			
10.227.231.15			

Apply Reset Cancel Help...

To access the Upgrade Wizard in File/Inventory Manager, choose **Actions > Upgrade Wizard** from the menu bar or click the **Device Upgrade Wizard** icon from the toolbar.

The Upgrade Wizard allows you to perform the following:

- back up your current configuration files
- set the primary runtime image from flash, PCMCIA, or TFTP
- set the boot image from flash, PCMCIA, or TFTP

- set the loadable image from flash or PCMCIA (required for ERS 8300 I/O module and ERS 8600 R-module only)
- boot the device with the specified images



Note: Before you initiate the Upgrade Wizard, you must load the desired primary runtime image file and the boot image file to either flash, PCMCIA, or TFTP server, and load the loadable image file (required for ERS 8300 I/O module and ERS 8600 R-module only) to either flash or PCMCIA. Otherwise, the upgrade cannot function properly.



Note: For Dual CPU auto image upgrades, due to the different boot times for Ethernet Routing Switch 8300 and Ethernet Routing Switch 8600, you must wait four minutes (ERS 8300) and 2 minutes (ERS 8600) respectively after the upgrade before performing any configurations, to ensure the switch has fully completed the boot process.



Note: The Upgrade Wizard does not support upgrades for the Ethernet Routing Switch 8300 Release 2.0.0.1 software because the switch requires a pre-boot file (p83f2300.img) in order to be handled in boot monitor mode.

Compatibility

This section lists operating systems, hardware, and software that are compatible with ESM 5.1.

Operating system compatibility

[Table 1](#) contains the list of operating systems that are compatible with ESM 5.1.

Table 1 ESM 5.1.0.0 compatibility matrix for operating systems

Operating system	Version	File type
Windows	95, 98, NT, 2000, XP, 2003	esm_5100.exe
Linux	Kernel version 2.2 and above	esm_5100_linux.sh
Sun Solaris/SunOS	2.7, 2.8, 2.9/5.7, 5.8, 5.9	esm_5100_solaris.sh



Note: This release of ESM bundles Java Runtime Environment (JRE) 1.4.2_06. With Solaris installations, OS patches are required to support the bundled JRE.

Supported devices and software versions

[Table 2](#) lists the devices and software versions that ESM 5.1 currently supports.

Table 2 Supported platforms and software releases

Platform	Software release
Ethernet Routing Switch 8600, including the following new hardware: 8681XLW module, 8681XLR module, 8616GTE module, 8672ATME MDA, 8608GBM module, 8608GTM module, 8632TXM module, 8648TXM module, 8672ATMM module, 8683POSM module.	3.0, 3.0.x, 3.1.x, 3.2.0, 3.2.0.2, 3.2.1.0, 3.2.2 (OSM 2.0), 3.3 (OSM 3.0), 3.5, 3.7 (OSM 4.0) 4.0 (ESM 5.0)
Ethernet Routing Switch 8600 Web Switching Module	WebOS 9.x (OSM 2.0), 10.0.x (OSM 3.0)

Table 2 Supported platforms and software releases (continued)

Platform	Software release
Ethernet Routing Switch 8100	2.0, 2.0.1.1, 3.1.x, 3.2.0, 3.2.0.2, 3.2.1.0, 3.2.2 (OSM 2.0), 3.3 (OSM 3.0)
Ethernet Routing Switch 8300	2.0 (OSM 4.0) 2.1, 2.2 (ESM 5.0), 2.2.8, 2.3 (ESM 5.1)
Passport 1050/1150/1200/1250	2.0.5.6, 2.0.5.7, 2.0.7.2, 2.0.7.3, 2.0.7.4, 2.1.0, 2.1.3 (OSM 2.0, OSM 3.0)
Ethernet Routing Switch 1424T	2.1 (OSM 3.0)
Ethernet Routing Switch 1612G, 1624G, 1648T	1.0 (OSM 3.0), 1.1 (OSM 4.0) 1.2 (ESM 5.0)
BayStack 350/410/450	3.0, 3.1, 4.0, 4.1 (OSM 2.0), 4.2, 4.3, 4.4 (OSM 3.0)
Business Policy Switch 2000	1.0 (OSM 1.0), 1.0.1, 1.1, 1.2, 2.x (OSM 2.0), 3.0 (OSM 3.0), 3.1 (OSM 4.0)
BayStack 380-24 T	2.0 (OSM 3.0), 3.0 (OSM 4.0)
BayStack 380-24 F	2.1.0 (OSM 3.0), 3.0 (OSM 4.0)
BayStack 420	1.0 (OSM 1.0), 1.0.2, 1.1 (OSM 2.0), 1.1.1, 1.1.2, 1.1.3 (OSM 3.0), 3.0 (OSM 4.0), 3.1 (OSM 4.1)
Ethernet Switch 460	2.3, 3.0 (OSM 3.0), 3.1 (OSM 4.0), 3.5 (OSM 4.1), 3.6 (ESM 5.0)
Ethernet Switch 470-24 T	3.0 (OSM 3.0), 3.0 (OSM 4.0), 3.1 (OSM 4.0), 3.5 (OSM 4.1), 3.6 (ESM 5.0)
Ethernet Switch 470-48 T	2.1.0 (only standalone supported); 2.2.0, 2.2.1 (stack also supported), 3.0, 3.0 (OSM 4.0), 3.1 (OSM 4.0), 3.5 (OSM 4.1), 3.6 (ESM 5.0)
Ethernet Switch 425-24T	2.0, 3.0 (OSM 3.0), 3.0 (OSM 4.0), 3.1 (OSM 4.0), 3.5 (ESM 5.0), 3.6 (ESM 5.1)
Ethernet Switch 425-48T	3.1 (OSM 4.0), 3.5 (ESM 5.0), 3.6 (ESM 5.1)
Ethernet Routing Switch 5510, 5520	3.0, 3.0.0.1 (OSM 3.0), 3.0 (OSM 4.0), 4.0 (OSM 4.0), 4.1 (OSM 4.1), 4.2 (ESM 5.0), 4.3 (ESM 5.1)
Ethernet Routing Switch 5530	4.2 (ESM 5.0), 4.3 (ESM 5.1)
Ethernet Routing Switch 3510	4.0 (ESM 5.0)
OPTera Metro 1200/1400/1450	1.0, 1.2 (OSM 3.0), 1.3 (OSM 4.0)
Alteon 2208, 2216, 2224, 2424, 2424 SSL, 3408, 3416	AOS 21.0
WLAN AP	1.3 (OSM 4.0)

Upgrading and downgrading ESM on your system

This section lists step-by-step instructions on how to upgrade to ESM 5.1 and how to downgrade to previous versions of the software.

Upgrading to ESM 5.1

To upgrade to ESM, software release 5.1.0.0, complete the following steps.

- 1 Install ESM 5.1.0.0 in a separate directory.
- 2 Launch ESM 5.1.0.0.
- 3 To migrate existing scheduled tasks from previous software versions of ESM (3.0, 4.0, 4.1, 5.0), use the Scheduled Tasks Upgrade Utility feature (**File > Upgrade**).

Note: To ensure that scheduled tasks have migrated successfully, open and test ESM 5.1.0.0.

- 4 Uninstall previous versions of ESM (3.0, 4.0, 4.1,5.0).

Downgrading from ESM, software release 5.1.0.0

To downgrade from ESM 5.1.0.0 to a previous version, complete the following steps:

- 1 Uninstall ESM 5.1.0.0.
- 2 Create a new directory.
- 3 Install the previous version (5.0) of ESM.

Understanding the issues in ESM 5.1.0.0

This section describes the known issues and resolved issues in ESM 5.1.

Known issues in ESM 5.1

The following are the know issues specific to ESM 5.1.

VLAN Manager and MLT Manager

- In VLAN Manager, applying changes to source MAC address-based VLANs can produce a null pointer exception error. And in MLT Manager, adding multiple SSMLTs to a device can also produce a null pointer exception error (Q01223326).
- In VLAN Manager, creating a protocol-based VLAN can produce an intermittent null pointer exception error (Q01236482).
- In VLAN Manger, deleting a port-based VLAN can produce a null pointer exception error (Q01277255).

Security Manager

- Security Manager does not allow users to update existing IP addresses. This limitation affects the configuration of Radius servers and access policies for security groups (Q01255307).

Upgrade Wizard

- With ESM 5.1, you cannot upgrade an ERS 8300 switch using the Auto Upgrade Wizard if the device is in NNCLI mode. You can only use Auto Upgrade Wizard if the device is in the CLI mode (Q01267923).

Outstanding issues from ESM 5.0

The following issues are outstanding from ESM 5.0 and are also applicable to ESM 5.1.

File/Inventory Manager

- With ESM 5.0, backing up configuration files on Ethernet Switch 470-24T, Release 3.5, fails intermittently. This can occur without any error being produced. The ESM GUI may report that the backup is complete:

```
Done. Please see log or log file for summary report.
```

You must check the fileInventoryMgr.log file, to view the failure. If you do not verify the fileInventoryMgr.log file before uploading this configuration file to a device, then the upload may fail (Q01247755).

This problem does not arise with Ethernet Switch 470 Release 3.6 software.

Topology Manager

- ESM cannot discover more than 700 nodes across different subnets and seeds (Q01256442).
- Discovered network may show an extra hub between directly connected devices (Q01194082).
- When BS380 is used as a seed device, ESM may not display all devices in the topology (Q01120787).
- When ESM discovers two separate subnets, the topology map may overlap the display of the two subnets (Q01128155).
- Currently, ESM topology files (.topo) can only be recognized within the same software version. For example, .topo files created in Release 4.1 can only be opened by OSM 4.1, and .topo files created in Release 5.0 can only be opened by ESM 5.0 (Q00955340).

VLAN Manager

- For VLAN Manager, you will be unable to add or delete untagged ports to VLAN for 16xx-1424 (Q00966591).

Note: This issue will be removed in version 2.0 of the 1600 software release. No update will be needed for ESM.

- For Ethernet Switch devices, STG priority must be a multiple of 4096. If a number other than a multiple of 4096 is entered in the STG priority field, the switch rounds the value down to the nearest multiple of 4096. No warning message is provided (Q01140840).

MLT Manager

- LACP configuration is not supported (Q01165408).

Security Manager

- ESM 5.0 SSH function may not work correctly with ERS 8000 software versions 3.7.7 to 3.7.9. This is due to ERS 8000 device issues that have been resolved in 3.7.10 (Q01169759).

Resolved issues in ESM 5.1

The following issues have been resolved in ESM 5.1.

Trap/Log Manager

- For ERS 8000 devices, the **Target Address Table** now displays **MMS** and **Mask** fields when you access the devices using SNMPv3. Also, the **timeout** and **retry** fields now display default values (Q01173299).

VLAN Manager

- When displaying tagged port information in the **Tagging** ports table, extra VLANs no longer appear in the **VlanIds** column (Q00959184).
- In the **Tagging** ports table, you can now set the VLAN tagging mode to **trunk** (tag all), **untagPvidOnly**, or **tagPvidOnly** for Ethernet Routing Switch 55xx, Ethernet Switch 460/470, and BPS 2000 (Q00854330).

Topology Manager

- If you set the ESM display in the **Preferences** dialog box to **by SysName** and then change a device's name to a longer string, the longer name does not extend beyond the borders of the name text box after rediscovery (Q01196081).

Related publications

For additional information about the features in Enterprise Switch Manager 5.1, refer to the following publications:

- *Using Enterprise Switch Manager, release 5.1.0.0 (208963-G)*
- *Configuring and Managing Security for Nortel Ethernet Routing Switch 5500 Series, release 4.2 (217463-B)*
- *Release Notes for Nortel Ethernet Routing Switch 5500, release 4.3 (217468-B)*
- *Configuring and Managing Security using NNCLI and CLI for the Ethernet Routing Switch 8300, release 2.2 (316804-C)*
- *Configuring and Managing Security using Device Manager for the Ethernet Routing Switch 8300, release 2.2 (317346-C)*
- *Release Notes for the Ethernet Routing Switch 8300, release 2.2.8 (316811-E)*
- *Configuring IP Routing Protocols for Nortel Ethernet Routing Switch 5500 Series, Software Release 4.2 (217465-A)*
- *Configuring and Managing Security for Nortel Ethernet Routing Switch 5500 Series, Software Release 4.2 (217463-A)*
- *Configuring VLANs, Spanning Tree, and Multilink Trunking for Nortel Ethernet Routing Switch 5500 Series, Software Release 4.2 (217464-A)*
- *Configuring and Managing Security: Nortel Ethernet Switches 460 and 470 Software Release 3.6 (217104-A)*
- *Configuring VLANs, Spanning Tree, and MultiLink Trunking: Nortel Ethernet Switches 460 and 470 Software Release 3.6 (217460-A)*
- *Reference for the BayStack 350/410/450 Management Software Operations Version 5.0 (210245-C)*
- *Networking Concepts for the Passport 1000 Series Switch (205588-B)*
- *Reference for the Passport 1000 Series Management Software Switching Operations, Release 2.1 (211192-A)*
- *Reference for the Passport 1000 Series Management Software Routing Operations, Release 2.1 (211193-A)*

How to get help

This section explains how to get help for Nortel products and services.

Getting Help from the Nortel web site

The best way to get technical support for Nortel products is from the Nortel Technical Support web site:

www.nortel.com/support

This site provides quick access to software, documentation, bulletins, and tools to address issues with Nortel products. More specifically, the site enables you to:

- download software, documentation, and product bulletins
- search the Technical Support web site and the Nortel Knowledge Base for answers to technical issues
- sign up for automatic notification of new software and documentation for Nortel equipment
- open and manage technical support cases

Getting Help through a Nortel distributor or reseller

If you purchased a service contract for your Nortel product from a distributor or authorized reseller, contact the technical support staff for that distributor or reseller.

Getting Help over the phone from a Nortel Solutions Center

If you do not find the information you require on the Nortel Technical Support web site, and have a Nortel support contract, you can also get help over the phone from a Nortel Solutions Center.

In North America, call 1-800-4NORTEL (1-800-466-7835).

Outside North America, go to the following web site to obtain the phone number for your region:

www.nortel.com/callus

Getting Help from a specialist by using an Express Routing Code

An Express Routing Code (ERC) is available for many Nortel products and services. When you use an ERC, your call is routed to a technical support person who specializes in supporting that product or service. To locate the ERC for your product or service, go to:

www.nortel.com/erc

