



# IQ Engine Release Notes

Version 10.6.6

9037889-04 Rev AA  
February 2024



Copyright © 2024 Extreme Networks, Inc. All rights reserved.

## Legal Notice

Extreme Networks, Inc. reserves the right to make changes in specifications and other information contained in this document and its website without prior notice. The reader should in all cases consult representatives of Extreme Networks to determine whether any such changes have been made.

The hardware, firmware, software or any specifications described or referred to in this document are subject to change without notice.

## Trademarks

Extreme Networks and the Extreme Networks logo are trademarks or registered trademarks of Extreme Networks, Inc. in the United States and/or other countries.

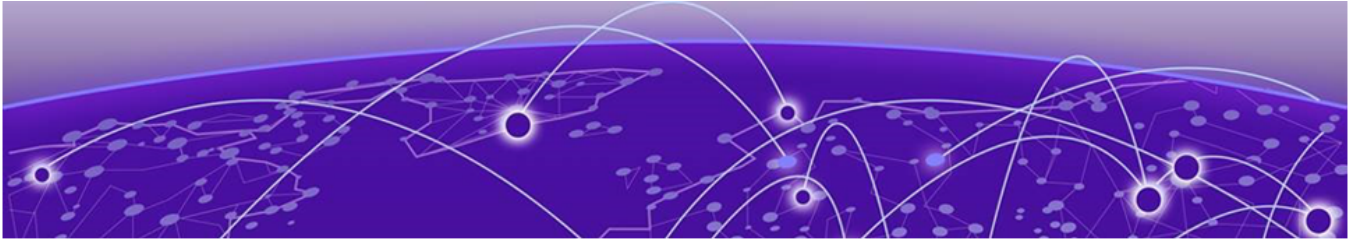
All other names (including any product names) mentioned in this document are the property of their respective owners and may be trademarks or registered trademarks of their respective companies/owners.

For additional information on Extreme Networks trademarks, see: [www.extremenetworks.com/about-extreme-networks/company/legal/trademarks](https://www.extremenetworks.com/about-extreme-networks/company/legal/trademarks)

## Open Source Declarations

Some software files have been licensed under certain open source or third-party licenses.

End-user license agreements and open source declarations can be found at: <https://www.extremenetworks.com/support/policies/open-source-declaration/>



# Table of Contents

---

<b>General Release Information for Release 10.6.6.....</b>	<b>4</b>
Release Date.....	4
New Hardware Supported.....	4
Hardware Platforms Supported.....	4
Management Platforms Supported.....	4
<b>New Features in Release 10.6.6.....</b>	<b>6</b>
<b>Addressed Issues in Release 10.6.6.....</b>	<b>7</b>
<b>Known Issues in Release 10.6.6.....</b>	<b>8</b>
<b>Earlier 10.6 Releases.....</b>	<b>9</b>
Minor Release 5: 10.6.5 New Features and Addressed Issues.....	9
New Hardware.....	9
New Features and Addressed Issues.....	9
Minor Release 4: 10.6.4 New Features and Addressed Issues.....	11
New Hardware Supported.....	11
New Features and Addressed Issues.....	11
Patch Release 1: 10.6.3a New Features.....	12
New Hardware Supported.....	12
New Features.....	12
Minor Release 3: 10.6.3 New Features and Addressed Issues.....	12
New Hardware Supported.....	12
New Features and Addressed Issues.....	13
Minor Release 2: 10.6.2 New Features and Addressed Issues.....	13
New Hardware Supported.....	13
New Features and Addressed Issues.....	13
Minor Release 1: 10.6.1 New Features and Addressed Issues.....	14
New Hardware Supported.....	14
New Features and Addressed Issues.....	15



# General Release Information for Release 10.6.6

---

## Release Date

---

January 2024

## New Hardware Supported

---

There is no new hardware supported for 10.6.6.

## Hardware Platforms Supported

---

- AP650
- AP650X
- AP305C/CX
- AP305C-1
- AP302W
- AP510C/CX
- AP410C
- AP410C-1
- AP460C
- AP460S6C
- AP460S12C
- AP3000
- AP3000X
- AP4000
- AP4000-1
- AP5010
- AP5050D
- AP5050U

## Management Platforms Supported

---

ExtremeCloud IQ 24.1.0 and later

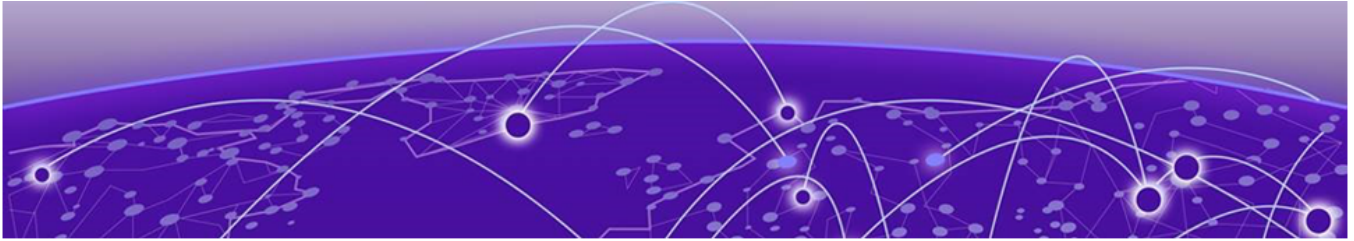
Virtual Appliance 21.1.23.4

Related Topics

[New Features in Release 10.6.6](#) on page 6

[Addressed Issues in Release 10.6.6](#) on page 7

[Known Issues in Release 10.6.6](#) on page 8



## New Features in Release 10.6.6

---

**Table 1: New features in 10.6.6**

Feature ID	New feature	Description
HOS-19423	AP4000, AP5010	Enabled 6E radio support for South Africa.
HOS-19522	All models	Added VLAN support for SES-Imagotag.



## Addressed Issues in Release 10.6.6

---

**Table 2: Addressed issues in 10.6.6**

Issue ID	Description
HOS-19974	Resolved a downgrade issue with 460C-EG and 302w-EG by preventing downgrades below the following minimum versions: 10.3r2 minimum version for AP302W-EG 10.6r4 minimum version for AP460C-EG



## Known Issues in Release 10.6.6

---

**Table 3: Known issues in 10.6.5**

Issue ID	Description
CFD-7445	<p>802.11ax client, such as iPhone 12/13, experiences difficulties when receiving 11ac frames if the MCS rate &gt;5 on a Wave1 chip platform, such as AP230, AP122, and AP130.</p> <p><b>Workaround:</b> Use 11AC with lower MCS rates (from 0-3), or use 11N.</p>
HOS-17683	<p>Some WPA3 clients cannot associate to the AP4000 properly when band steering is enabled.</p> <p><b>Workaround:</b> Disable band steering.</p>
HOS-18313	<p>AP5010, AP5050D, and AP5050U devices will not boot when some non-Extreme micro-USB cables are connected.</p> <p><b>Note:</b> For all Extreme Networks access points, use the Extreme Networks certified ACC-WIFI-MICRO-USB console cable. Other MICRO-USB console cables have not been certified by Extreme Networks.</p> <p><b>Workaround:</b> Use an Extreme Networks certified console cable, or plug in the cable after the AP boots.</p>





## Earlier 10.6 Releases

---

[Minor Release 5: 10.6.5 New Features and Addressed Issues](#) on page 9

[Minor Release 4: 10.6.4 New Features and Addressed Issues](#) on page 11

[Patch Release 1: 10.6.3a New Features](#) on page 12

[Minor Release 3: 10.6.3 New Features and Addressed Issues](#) on page 12

[Minor Release 2: 10.6.2 New Features and Addressed Issues](#) on page 13

[Minor Release 1: 10.6.1 New Features and Addressed Issues](#) on page 14

The following sections provide information about changes for earlier IQ Engine 10.6 releases.

### Minor Release 5: 10.6.5 New Features and Addressed Issues

---

#### New Hardware

There is no new hardware supported in 10.6.5.

#### New Features and Addressed Issues

**Table 4: New features in 10.6.5**

Feature ID	New feature	Description
HOS-19416	AP3000/X	Enabled 6E Radio for Singapore and changed the Macao country code. Singapore and Macao used to be a region. Now they are separate countries. The country code prefix for Singapore is now SG. The country code prefix for Macao is now MO.
HOS-19417	AP4000	Enabled 6E Radio for Singapore and changed the Macao country code. Singapore and Macao used to be a region. Now they are separate countries. The country code prefix for Singapore is now SG. The country code prefix for Macao is now MO.
HOS-19418	AP5010	Enabled 6E Radio for Singapore.

**Table 4: New features in 10.6.5 (continued)**

Feature ID	New feature	Description
HOS-19421	AP3000/X	Enabled 6E Radio for South Africa.
HOS-19510	AP3000/X	Enabled 6E Radio for Thailand and changed the country codes for Thailand and Vietnam. Thailand and Vietnam used to be a region. The country code prefix for AP4000 Thailand is now TH. The country code prefix for AP4000 Vietnam is now VN.
HOS-19511	AP4000	Enabled 6E Radio for Thailand. Thailand and Vietnam used to be a region. The country code prefix for AP4000 Thailand is now TH. The country code prefix for AP4000 Vietnam is now VN.
HOS-19512	AP5010	Enabled 6E Radio for Thailand.
HOS-19545	All APs	Resolved a security vulnerability related to Teacher View Port. The port is now closed.
HOS-19576	AP 5010	New section added to the AP 5010 show ver command to show the IoT radio hardware type R1 or R7. Example: "IoT Hardware: CC2652R1 where R1 means Revision 1"
HOS-19584	AP460/S6/S12C	Added support for Panama.
HOS-19588	AP4000	Added support for Armenia, Azerbaijan, and Uzbekistan.
HOS-19589	AP460S12C	Added support for Trinidad and Tobago.
HOS-19592	AP302W, AP305CX, AP410C, AP460C/S6C/S12C, and AP510C/CX	Added support for Albania.
HOS-19626	All APs	Added ARP suppression to protect wireless access interface commands.
HOS-19688	AP305C, AP302W, and AP460C	Added support for Fiji.
HOS-19709	AP305C(X) and AP410C-WR	Added support for Montenegro and Bosnia.
HOS-19715	AP410C and AP5010	Resolved a security vulnerability that exploits a stack-based buffer overflow inside some processes related to the bonjour feature. Fixed in Hive OS release 10.6.5 and 10.6.1a.
HOS-19816	AP460C	Corrected the AP460C outdoor channels for Egypt.

**Table 4: New features in 10.6.5 (continued)**

Feature ID	New feature	Description
HOS-19837	All APs	CLI added to change the MTU size.
HOS-19866	AP230 and AP250	Resolved an issue related to a buffer overflow in ah_auth listening on port 3001.

**Table 5: Addressed issues in 10.6.5**

Issue ID	Description
CFD-8704	Resolved an AP 302W VPN issue related to MTU size by adding the ability to change the MTU size using the CLI.
CFD-9684	Resolved an issue with high CPU usage on AP550 when nearby robots are on the same 2.4 GHz channel, caused by continuous "Wireless Event (cmd=0x8C02) too big (1519)" error prints to the log.
CFD-9755	Resolved an issue where the Spectrum intelligence report cannot be generated if "All non-management traffic destined for the Extreme Networks device itself" is enabled.
CFD-9804	Resolved an issue where AP5010s unexpectedly broadcast using 160MHz channel width on the WiFi1 (5GHz) interface.
CFD-9834	Resolved an issue with the legacy IDP feature on the AP630/AP650/AP510C/AP410C causing connectivity issues with some Windows clients.
CFD-10206	Resolved an issue with eth0 allowed VLAN commands not being applied, and allowed VLANs instability.

## Minor Release 4: 10.6.4 New Features and Addressed Issues

### New Hardware Supported

There is no new hardware supported in 10.6.4.

### New Features and Addressed Issues

**Table 6: New features in 10.6.4**

Feature ID	New feature	Description
HOS-17861	All APs	Allow exceptions for LLDP when the multicast filter/rate-limit is on.
HOS-18685	AP3000, AP4000, and AP5000	Additional enhancements to Packet Capture for AP3000, AP4000, and AP5000.
HOS-19030	AP3000 and AP4000	Support for ses-imagotag on AP3000 and AP4000.

**Table 6: New features in 10.6.4 (continued)**

Feature ID	New feature	Description
HOS-19486	AP3000/X, AP4000, and AP5010	6Ghz radio enabled for Mexico.
HOS-19580	AP305C	Support for Albania on AP305C.

**Table 7: Addressed issues for 10.6.4**

Issue ID	Description
CFD-9248	Resolved an issue with AP5010 not sending the model in sysDescr OID via SNMP.
HOS-19099	Resolved an issue with AP3000/AP5050 in Client Mode, where the local client on Eth1 cannot open the Web GUI.
HOS-19114	Fixed frequency error for AP5050, when running below -40°C.
HOS-19469	TCP Port 5918, which is externally accessible, is now closed by default.

## Patch Release 1: 10.6.3a New Features

---

### New Hardware Supported

There is no new hardware supported in 10.6.3a.

### New Features

**Table 8: New features in 10.6.3a**

Feature ID	New feature	Description
XIQ-22858 HOS-19697	AP305C(X) and AP410C-WR	Added AP305C(X) and AP410C-WR support for Montenegro and Bosnia.

## Minor Release 3: 10.6.3 New Features and Addressed Issues

---

### New Hardware Supported

There is no new hardware supported in 10.6.3.

## New Features and Addressed Issues

**Table 9: New features in 10.6.3**

Feature ID	New feature	Description
HOS-19186	AP5010	Regulatory changes for the Dominican Republic. Removed channels 120–128 and reduced power for channels 36–48 to match Canadian levels.

**Table 10: Addressed issues in 10.6.3**

Issue ID	Description
CFD-9248	Resolved an issue with AP5010 not sending the model in sysDescr OID via SNMP.
HOS-19099	Resolved an issue with AP3000/AP5050 in Client Mode, where the local client on Eth1 cannot open the Web GUI.
HOS-19114	Fixed frequency error for AP5050, when running below -40°C.
HOS-19469	TCP Port 5918, which is externally accessible, is now closed by default.

## Minor Release 2: 10.6.2 New Features and Addressed Issues

### New Hardware Supported

There is no new hardware supported in 10.6.2.

### New Features and Addressed Issues

**Table 11: New features in 10.6.2**

Feature ID	New feature	Description
HOS-17008	AP3000 and AP4000	Enhanced DHCP Reservations to allow admins to reserve a specific client (MAC address) to an IP.
HOS-17009	AP3000, AP4000, AP5010, AP5050D, and AP5050U	Added support for up to 48 port forwarding rules when using Client Mode.
HOS-18176	AP305C, AP410C, and AP5010	Added support for Imagotag HF dongle, connected to the AP USB port, allowing Imagotag Electronic Shelf Labels to connect to the management server. From the AP device template or device interface settings, the administrator can enable Imagotag support on the AP, defining the Imagotag server/port and channel for the dongle.
HOS-18670	AP510, AP650, AP510CX, and AP650X	Added support for Fabric Attach.

**Table 11: New features in 10.6.2 (continued)**

Feature ID	New feature	Description
HOS-18682	AP5010	Added support for PSE out (6W) and USB on when using 802.3at Power over Ethernet. Wi-Fi radios will transmit at 2x2x2 when using this mode. Configuration possible through device templates or individual device interface.
HOS-18704	AP3000	AP3000 open for South Korea open 6E.
HOS-18705	AP3000X	AP3000X open for South Korea open 6E.
HOS-19188	AP410C and AP410C-1	Increased power on AP410C, AP410C-1 – Sri Lanka.

**Table 12: Addressed issues for 10.6.2**

Issue ID	Description
HOS-18957	Addressed an issue where clients lost traffic after L3 roaming.
HOS-18962	Patched OpenSSL module to mitigate the CVE-2022-0778 vulnerability.
HOS-19168	Resolved an unauthenticated buffer-overflow based remote code execution, which would allow an attacker to gain full control (as root) on an AP.
HOS-19295	Secured Cacheable Server Responses that contain PPSK.
HOS-19314	Syslog events for Rogue AP using AirDefense are now under critical.

## Minor Release 1: 10.6.1 New Features and Addressed Issues

### New Hardware Supported

The following new hardware is supported in 10.6.1:

- AP3000
- AP3000X

## New Features and Addressed Issues

**Table 13: New features in 10.6.1**

Feature ID	New feature	Description
HOS-17250	AP5050U and AP5050D	AP5050 now supports Client Mode.
HOS-18811	AP5050U and AP5050D	AP5050 now supports Honduras.
HOS-18988	AP5050U and AP5050D	AP5050 now supports Japan, No 6E.

**Table 14: Addressed issues in 10.6.1**

Issue ID	Description
CFD-8860 (02705921, 02739394)	Addressed an issue where APs were showing high CPU utilization when they were running 10.5.3 or above. Affected AP122/AP150W/AP302W/AP460C.
CFD-8854 (02718195)	Addressed an issue where AP4000/AP5010/AP305C/AP410C(wifi0)/AP460C(wifi0) Radio RX stuck after ACSP or boot up. This issue will NOT be recovered unless the AP is rebooted.
CFD-8669 (02652714)	Addressed an issue where on the AP130, WiFi1 stopped transmitting intermittently.
CFD-8188 (02623237, 02635389, 02710327)	Addressed an issue where the AP650X failed to update when <b>Location Essentials</b> was enabled.
HOS-18800	Addressed an issue where Fast BSS Transition (FT) roam failed with the target AP sending a <b>deauth</b> reason of <b>unspecified failure on receiving reassoc req from sta.</b>
HOS-18796	Addressed an issue that involved HiveOS/IQ Engine Vulnerabilities through CAPWAP.