



IQ Engine Release Notes

Version 10.7.1

9038927-00 Rev AB
June 2024



Copyright © 2024 Extreme Networks, Inc. All rights reserved.

Legal Notice

Extreme Networks, Inc. reserves the right to make changes in specifications and other information contained in this document and its website without prior notice. The reader should in all cases consult representatives of Extreme Networks to determine whether any such changes have been made.

The hardware, firmware, software or any specifications described or referred to in this document are subject to change without notice.

Trademarks

Extreme Networks and the Extreme Networks logo are trademarks or registered trademarks of Extreme Networks, Inc. in the United States and/or other countries.

All other names (including any product names) mentioned in this document are the property of their respective owners and may be trademarks or registered trademarks of their respective companies/owners.

For additional information on Extreme Networks trademarks, see: <https://www.extremenetworks.com/about-extreme-networks/company/legal/trademarks>

Open Source Declarations

Some software files have been licensed under certain open source or third-party licenses.

End-user license agreements and open source declarations can be found at: <https://www.extremenetworks.com/support/policies/open-source-declaration/>

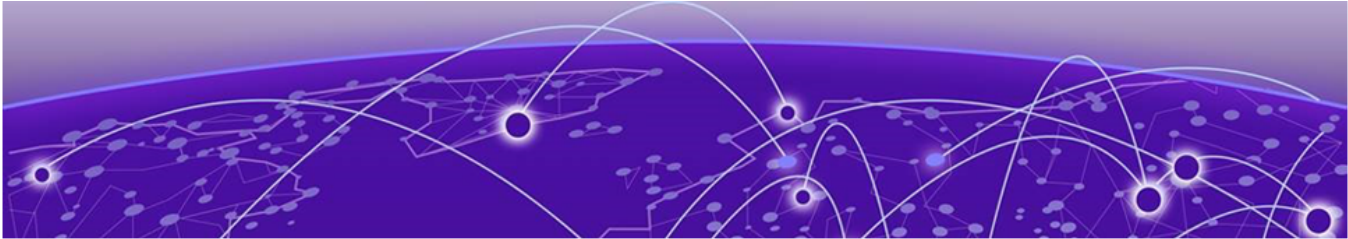


Table of Contents

General Release Information for Release 10.7.1.....	4
Release Date.....	4
New Hardware Supported.....	4
Hardware Platforms Supported.....	4
Management Platforms Supported.....	4
New Features in Release 10.7.1.....	5
Addressed Issues in Release 10.7.1.....	7
Known Issues in Release 10.7.1.....	8



General Release Information for Release 10.7.1

Release Date

May 2024

New Hardware Supported

Release 10.7.1 adds support for the AP5020.

Hardware Platforms Supported

This release supports the AP5020.

Management Platforms Supported

ExtremeCloud IQ 24.4.0 and later

Related Topics

[New Features in Release 10.7.1](#) on page 5

[Addressed Issues in Release 10.7.1](#) on page 7

[Known Issues in Release 10.7.1](#) on page 8



New Features in Release 10.7.1

Table 1: New features in 10.7.1

Feature ID	New feature	Description
HOS-18819	AP5020: Bring up Multi BLE for Dual IoT Radio	For AP5020, we changed the iBeacon defaults. Old Defaults: <ul style="list-style-type: none"> • UUID: 4165726F686976654E6574776F726B73 (AerohiveNetworks) • MAJOR: 1 • MINOR: 1 New Defaults: <ul style="list-style-type: none"> • UUID: 00000000-0000-0000-0000-00000000 00000 • MAJOR: 0 • MINOR: 0
HOS-20002	AP5020 SDR Mode Configuration Phase 1 (Mode1 & Mode3)	The AP5020 supports two radio modes with IQ Engine 10.7r1: <ul style="list-style-type: none"> • Mode 1 (Tri-Radio): 2.4 GHz (Radio-1), 5 GHz (Radio-2), 6 GHz (Radio-3) • Mode 2 (Dual 5 GHz w/ 6 GHz): 5 GHz (Radio-1), 5 GHz (Radio-2), 6 GHz (Radio-3)
HOS-20184	AP5020 - 320Mhz support	We added AP5020 (WiFi 7) support for the 320 MHz channel, on the 6 GHz radio.
HOS-20191	AP5020 : 4096-QAM – 6G radio only	We added AP5020 support for 4096-QAM on the 6 GHz radio.
HOS-20501	Add Tier 1 Countries for GA release AP5020	We added support for the AP5020 (Wi-Fi7) Access Point to: USA, Canada, EU, Puerto Rico, Colombia, and United Kingdom
HOS-20503	Add all Tier 1A Countries for AP5020	We added support for the AP5020 (Wi-Fi7) Access Point to: Australia, New Zealand, Brazil, Mexico, Japan, South Korea, Singapore, South Africa, and UAE.

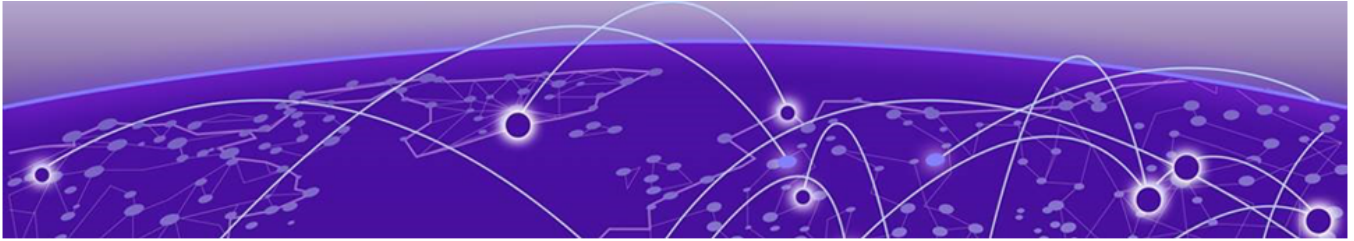
Table 1: New features in 10.7.1 (continued)

Feature ID	New feature	Description
HOS-20589	Wi-Fi7 802.11BE features 24r4 / 10.7.1	We added Phase 1 Wi-Fi 7 (802.11be) features to IQ Engine.
HOS-20608	AP5020 SDR Phase 1: Allow only access mode on Wi-Fi interfaces	The AP5020 provides support for client Access Mode only on the Wi-Fi interfaces. Mesh, sensor-mode and client mode support are currently not supported.



Addressed Issues in Release 10.7.1

There are no new addressed issues for Release 10.7.1.



Known Issues in Release 10.7.1

Table 2: Known issues in 10.7.1

Issue ID	Description
HOS-20803	Client Monitor 2.0 and Dynamic Packet Capture might not work for WPA3-ENT protected SSIDs.