



ExtremeCloud IQ

Release Notes 23.3.0

May 2023



Copyright © 2023 Extreme Networks, Inc. All rights reserved.

Legal Notice

Extreme Networks, Inc. reserves the right to make changes in specifications and other information contained in this document and its website without prior notice. The reader should in all cases consult representatives of Extreme Networks to determine whether any such changes have been made.

The hardware, firmware, software or any specifications described or referred to in this document are subject to change without notice.

Trademarks

Extreme Networks and the Extreme Networks logo are trademarks or registered trademarks of Extreme Networks, Inc. in the United States and/or other countries.

All other names (including any product names) mentioned in this document are the property of their respective owners and may be trademarks or registered trademarks of their respective companies/owners.

For additional information on Extreme Networks trademarks, see: www.extremenetworks.com/company/legal/trademarks

Open Source Declarations

Some software files have been licensed under certain open source or third-party licenses.

End-user license agreements and open source declarations can be found at: <https://www.extremenetworks.com/support/policies/open-source-declaration/>

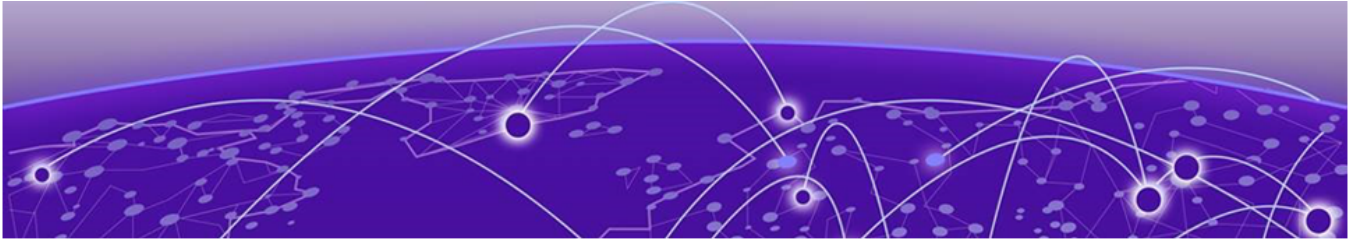
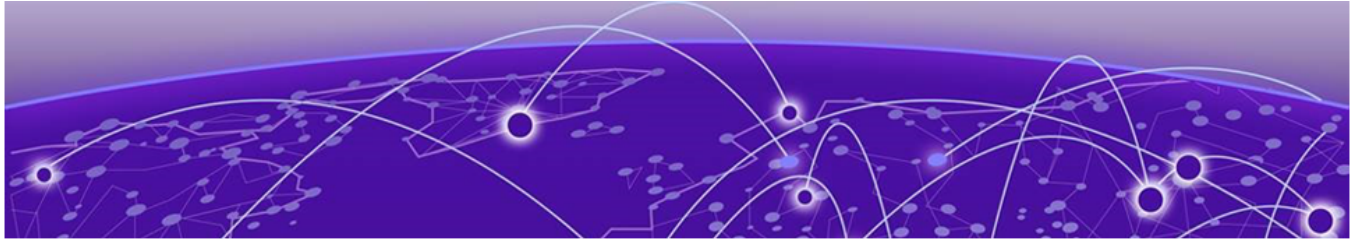


Table of Contents

General Release Information.....	4
Current Release: 23.3.0.....	4
ExtremeCloud IQ Public IP Address Blocks.....	4
Supported IQ Engine 10.6r1 Software.....	5
New Features in 23.3.0.....	6
Addressed Issues in 23.3.0.....	11
Known Issues in 23.3.0.....	12
Device Support Information.....	15
Controllers.....	15
Access Points.....	16
Universal Hardware.....	16
IQ Engine (Cloud Native).....	17
WiNG.....	18
Extreme Wireless.....	19
Switches.....	19
Universal Hardware.....	20
ExtremeXOS.....	23
VOSS.....	25
IQ Engine (Cloud Native).....	25
Dell EMC.....	26
Routers.....	26
Site Engine.....	27
CoPilot.....	28
A3.....	28
Supported Web Browsers.....	29



General Release Information

Current Release: 23.3.0

May 2023

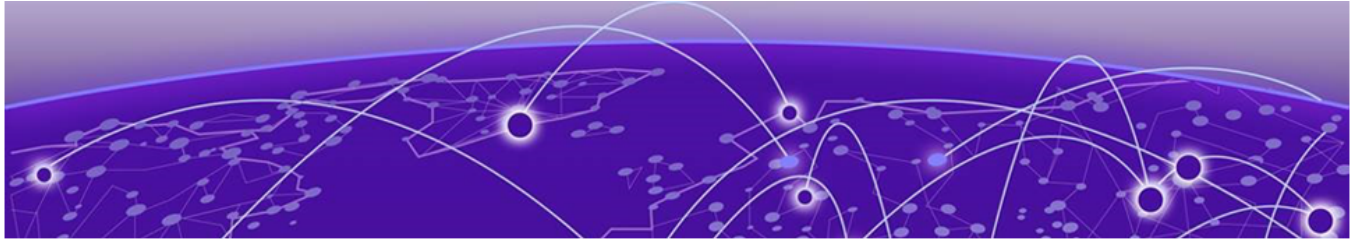
ExtremeCloud IQ Public IP Address Blocks

Data Center	IP Block	Addresses and Ports
Global Data Center (GDC)	44.234.22.92/30 18.194.95.0/28 34.253.190.192/26 3.234.248.0/27	
US East (VA)	34.202.197.0/26 44.192.245.0/26 3.234.248.0/27	Firewall Address and Port Information
US East 2 (VA2)	34.202.197.0/26 44.192.245.0/26 3.234.248.0/27	Firewall Address and Port Information
Ireland (IE)	34.253.190.192/26	Firewall Address and Port Information
India (IN)	13.232.67.8/29 3.6.70.64/29	Firewall Address and Port Information
Germany (FRA)	3.67.81.96/27 18.194.95.0/28	Firewall Address and Port Information
Sweden (SE)	13.48.186.224/29 13.48.4.184/29	Firewall Address and Port Information
Brazil (BR)	18.228.70.16/28	Firewall Address and Port Information
Australia (AUS)	13.210.3.192/28	Firewall Address and Port Information
Japan (JP)	18.176.203.112/29 13.231.6.232/29	Firewall Address and Port Information
Azure, US East (AVA)	52.226.89.112/28	Firewall Address and Port Information
Bahrain (BH)	15.184.70.208/28	Firewall Address and Port Information
The Netherlands (NL-GCP)	34.91.82.64/27	Firewall Address and Port Information
US-Iowa (IA-GCP)	34.67.130.64/27	Firewall Address and Port Information
Switzerland (ACH)	51.107.1.192/28	Firewall Address and Port Information

Data Center	IP Block	Addresses and Ports
Azure, Canada Central (ACA)	20.151.64.48/28	Firewall Address and Port Information
Singapore (SG-GCP)	34.87.158.80/28	Firewall Address and Port Information
United Kingdom (UK-AGB)	51.143.233.80/28	Firewall Address and Port Information

Supported IQ Engine 10.6r1 Software

This is the [link](#) to the current IQ Engine version that ExtremeCloud IQ supports.



New Features in 23.3.0

Device OS Support

This release supports the following device operating systems:

- **Switch Engine** 31.7.1.2 Download Image Support
- **Switch Engine** 32.4
- **Fabric Engine** 8.8.2 (onboard, monitor, config, and local image management)
- **Fabric Engine** 8.10

New Hardware Support

The following hardware is supported with this release:

- AP3000
- AP3000X

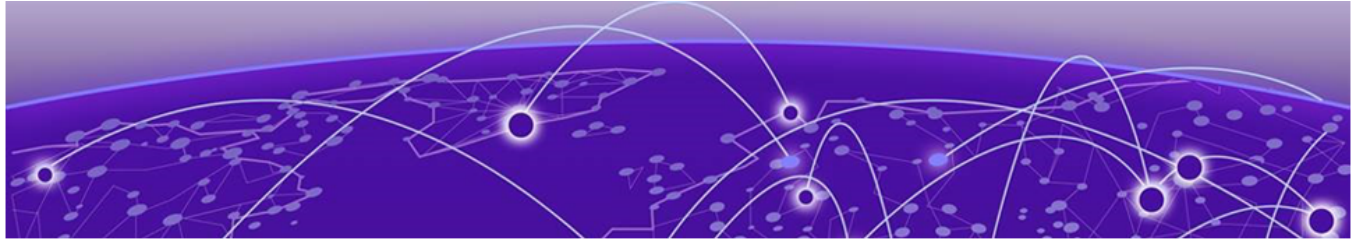
Feature ID	Feature	Description
XIQ-16671 and XIQ-10785	Adverse Traffic Pattern Data Enhancement	The data for adverse traffic patterns now appears in near-real time.
XIQ-16669	Support for IQE 10.6r1	IQE 10.6r1 is now supported.
XIQ-16125	Honduras support for AP5050/D	AP5050/D devices are now supported in Honduras.
XIQ-15615	North Macedonia support for all WiFi6 and WiFi6E APs	WiFi6 and WiFi6E APs are now supported in North Macedonia.

Feature ID	Feature	Description
XIQ-14298 and XIQ-8833	Option to Override Switch Configuration.	ExtremeCloud IQ can now detect if Switch Engine and Fabric Engine devices have local configuration that is out of sync with assigned network policy configuration when network policy and configuration updates are performed. This feature requires a minimum software version of Switch Engine 32.3 or Fabric Engine 8.9 to be installed. Switch Engine 32.3 and Fabric Engine 8.9 will be able to detect issues with a mismatch of port VLAN assignment, LAG configuration, and DNS servers. Switch Engine 32.4 adds support to detect issues with a mismatch of DHCP/static IP address, subnet, and gateway of the defined ExtremeCloud IQ interface management VLAN settings.
XIQ-13945	Fabric Engine 8.8.2 Support	Fabric Engine 8.8.2 Onboard, Monitor, Config, and Download Image are now supported.
XIQ-13053	DNS Configuration at the Device Level	DNS settings can now be made at the device level for Switch Engine and Fabric Engine devices. To do this, a network policy must be assigned and the Device Management Servers section unlocked, which overrides DNS settings defined in the network policy.
XIQ-12710	Syslog Configuration at the Device Level	Syslog settings can now be made at the device level for Switch Engine and Fabric Engine devices. To do this, a network policy must be assigned and the Device Management Servers section unlocked, which overrides Syslog settings defined in the network policy.

Feature ID	Feature	Description
XIQ-12709 and XIQ-12708	SNMP and NTP Configuration at the Device Level	SNMP and NTP settings can now be made at the device level for Switch Engine and Fabric Engine devices. To do this, a network policy must be assigned and the Device Management Servers section unlocked, which overrides these settings defined in the network policy.
XIQ-12707	Management Servers Common Settings	Within a network policy under the new Switching section the customer can now choose the default routing instance for NTP, DNS, Syslog and SNMP. You can select VR-Default or VR-Mgmt for Switch Engine, which applies the correct routing instance to the defined network policy DNS, NTP, SNMP, and Syslog server settings.
XIQ-11219	Fabric Engine Device Credentials Support	The global enable and disable options for Fabric Engine devices have been updated with new messaging.
XIQ-11009	Device Level Config Override Enhancement	The process for overriding switch template configuration settings with device-level settings has been enhanced for Switch Engine and Fabric Engine devices.
XIQ-8291	Log In Page Enhancement	The ExtremeCloud IQ log in process has been enhanced to improve speed.
XIQ-6373	Network Policy Workflow Enhancement	The Network Policy Workflow Tabs have been enhanced and improved for clarity and ease of use.
XIQ-6319	Device Templates Section Renamed	The Device Templates section of the network policy workflow have been renamed to better reflect the types of templates available.

Feature ID	Feature	Description
XIQ-6318	Network Policy Workflow Enhancement for AP Templates	The AP Templates section of the network policy workflow has been moved into Wireless Networks.
XIQ-6317	Router Settings in Network Policy Renamed	The Router Settings section in the network policy workflow has been renamed to Branch Routing to better reflect the supported products for these settings.
XIQ-6316	Network Policy Additional Settings Enhancements	In the network policy configuration workflow, additional settings have been moved into the appropriate product sections and are no longer grouped as additional settings.
XIQ-6313	New Switch Configuration Section for Switch Engine and Fabric Engine Devices	Switch Engine and Fabric Engine device templates have been moved to the Switch Templates section under the Switching tab in the network policy workflow.
XIQ-6164	Common Settings Section for Switch Engine and Fabric Engine Devices	A Common Settings section for Switch Engine and Fabric Engine devices has been added to the network policy workflow.
XIQ-3936 and XIQ-3935	Switch Primary Failover Enhancement for Switch Stacks	During a switch stack primary switch failover, ExtremeCloud IQ now maintains the stack state with no slot order change.
XIQ-3788	Client Mode Support for AP 5050 Devices	Client Mode is supported for AP5050 devices.
XIQ-3611	VIM Port Configuration Support for 5720 Switch Engine and Fabric Engine Devices	Switch templates for 5720 now support the ability to define a VIM module. A VIM-6YE or VIM-2CE can be selected along with appropriate port channelization options.

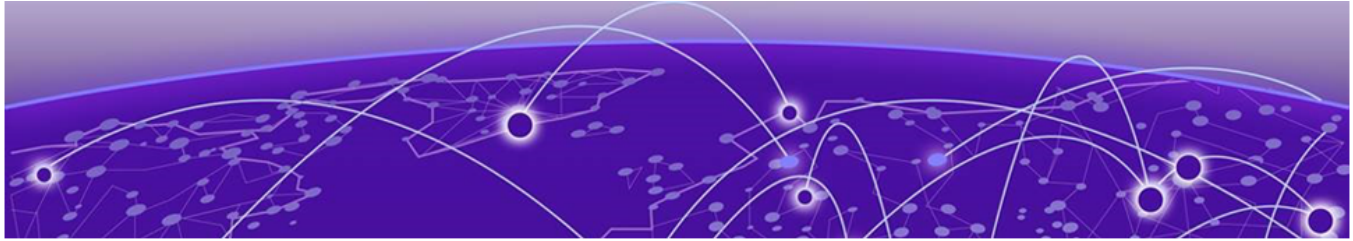
Feature ID	Feature	Description
XIQ-1575	Client 360 Enhancements for Wired Clients	Data widgets for wired and wireless clients have been enhanced on the ML insights > Client 360 page, which will now include presentation of client IP address and the associated VLAN.
XIQ-966	VIM Port Configuration Support for 5520 Switch Engine and Fabric Engine Devices	You can now configure a port speed for VIM ports on 5520 Switch Engine and Fabric Engine switches.
XIQ-891	Client 360 IP Address and VLAN Display Enhancement	This release introduces an enhanced presentation of client IP addresses and their associated VLANs.



Addressed Issues in 23.3.0

The following table contains addressed product issues.

Issue ID	Description
CFD-9129 (02754288)	Addressed an issue where the schedule object start date showed the this value is out of range error message.
CFD-9083 (02749536,02753118)	Addressed two issues with Private Client Groups: duplicate entries were displayed and the list was incomplete.
CFD-9020 (02718998)	Addressed an issue where the Guest Essentials Splash template still displayed after being deleted.
CFD-8976 (02735978)	Addressed an issue where an API to add users to a PCG-enabled network policy stopped working.
CFD-8967 (02734457)	Addressed an issue where an error was seen on the mandatory Sponsor Email selection.
CFD-8923 (02716408)	Addressed an issue where Guest Essentials User credentials were incomplete when the password contained \$\$.
CFD-8897 (02724098)	Addressed an issue involving user export and CSV import.
CFD-8832 (02716443, 02728417)	Addressed an issue where when navigating to the API Token Management page in Global Settings , after the page loaded in, the An unknown error has occurred banner popped up.
CFD-8811 (02713890 02753151)	Addressed an issue where Universal APs could not flip to Local mode after going through the correct Onboarding process in ExtremeCloud IQ.
CFD-8413 (02653047)	Addressed an issue where the Alarm Time Raised and Time Cleared were the same time or only 1 second different.
CFD-8385 (02637296,02705107,02705198,02732720)	Addressed an issue with changing Country Codes .
XIQ-12506	Addressed an issue where VPN Service appeared to be limited to 1000 even though range showed as (1-5000).
XIQ-15370	Addressed an issue where the Traffic Filter feature under Network Policy > Policy Details was not working.
XIQ-17024	Addressed an issue where Cable test was not supported for an x435 switch running OS version 32.3 due to limitations with switch storage space.
XIQ-17235	Clarified a device-level configuration explanation on the Device 360 page.



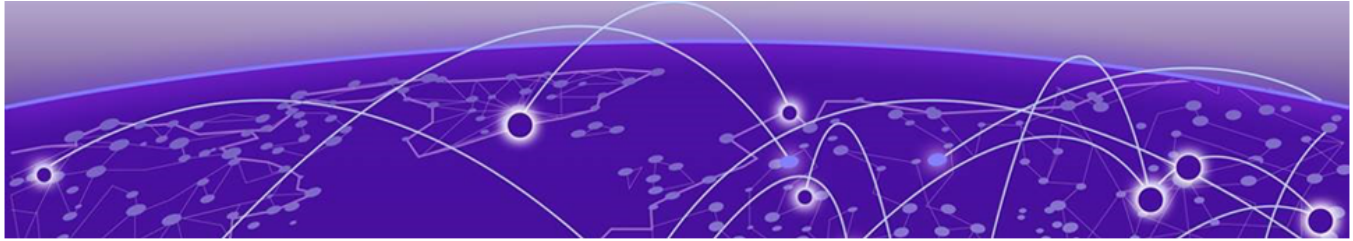
Known Issues in 23.3.0

The following table contains known product issues.

Issue ID	Description
CFD-8216 (02634924)	Access points running IQ Engine version <=10.4r3 are not able to receive the Delta Configuration push from ExtremeCloud IQ when Air Defense Essentials is enabled. You need to upgrade them to the latest IQ Engine version.
CFD-8946 (02710778, 02748750)	License descriptions are automatically cleared when the "ACTIVATED" status is updated.
CFD-8598 (02670900)	Cannot enable Guest Essentials via Configure > Guest Essentials Users . Workaround: It can still be enabled via Essentials > Extreme Guest in Extreme Cloud IQ.
CFD-8677 (02688860)	VLAN probe shows the results of a successful probe while the status says it is still running.
CFD-8678 (02688797)	VLAN probe category counts are not always accurate.
XIQ-16652	The AP3000x/AP3000/AP5010U Auto Provision Update is failing with country code discover timeout.
XIQ-17024	The Cable Test action is not supported for x435 switch running the 32.3 software image due to limitations with storage space on the switch.
XIQ-9848	Duplicate entries in the Client Trail when a client moves away from the AP then comes back.
XIQ-9847	The Roam Time entry in the Client Trail does not always display the correct device name .
XIQ-5700	Client Trail only showed the currently connected AP when the client roamed to a different AP from the onboarded Extreme Cloud IQ Controller.
XIQ-12715	Changing WiFi2 mode to DUAL in the AP4000 device template does not send the CLI in the Delta configuration push, and results in a Delta configuration push failure. Workaround: Use a Full configuration push.
XIQ-12503	Network 360 shows Unknown Error when All Access Points Applications is selected and the user is selecting both WiNG and IQE devices. Workaround: Deselect WiNG Devices.
XIQ-7312	5720 Switch Engine devices were showing as connected during the reboot process.

Issue ID	Description
HOS-18313	AP5010 devices will not boot when some non-Extreme micro-USB cables are connected.
APC-41057	Legend labels on the switch stack graph sometimes disappear when attempting to download or print the graph. Workaround: <ol style="list-style-type: none"> 1. Only download one graph at a time, and open the downloaded file before choosing to download again. 2. The SVG option is the most stable format, the rest (PNG, JPG, and PDF) have spacing issues on the legend section.
APC-22297	ExtremeCloud IQ displays PoE configuration controls for all ports on the Dell EMC N1108P switch, even though the N1100P only supports PoE on ports 1 - 4.
APC-21456	In rare cases, ExtremeCloud IQ does not upload some IGMP sub-commands successfully. Workaround: Use the Supplemental CLI feature to upload problematic commands.
APC-20760	ExtremeCloud IQ reports as unidentified any wired devices that are connected to an SR2208P switch.
APC-20734	When a configuration upload is unsuccessful because of improper Supplemental CLI commands, hovering the mouse over the upload message does not result in a tool tip containing the problematic CLI command.
APC-20707	When an admin selects multiple switches in ExtremeCloud IQ, the Get Tech Data utility becomes unavailable.
APC-20647	ExtremeCloud IQ does not successfully upload configurations that contain an external RADIUS server.
APC-20172	The option to configure SSH displays when the admin is attempting bulk edits of multiple switches or of switches and APs together. When the admin is performing bulk edits of multiple APs only, ExtremeCloud IQ correctly hides the SSH configuration options.
APC-20092	In some cases, ExtremeCloud IQ does not permit an administrator configuring a switch template to configure a switch port as a Phone port.
DAPC-385	ExtremeCloud IQ sometimes displays the incorrect port number in the tool tip when the admin mouses over a stack port on the Port Status page.
DAPC-382	When an administrator attaches a switch stack to HiveManager Virtual Appliance , only the primary switch is auto-detected. The administrator must subsequently onboard the remaining stack members manually.

Issue ID	Description
DAPC-240D	<p>When the primary switch is removed from a stack, the stack retains the old MAC address. As a result, the primary switch (now a standalone switch), and the original stack both have the same MAC address, which ExtremeCloud IQ cannot resolve.</p> <p>Workaround: Before removing the primary from a stack with the intention of continuing to use the primary as a standalone switch, perform the following steps:</p> <ol style="list-style-type: none"> 1. Remove the stack from ExtremeCloud IQ. 2. Perform the related command line operations on the stack to remove the primary switch. 3. Re-add the stack and the standalone switch to ExtremeCloud IQ.
DAPC-222	<p>After an admin uploads a stack template to a switch stack, ExtremeCloud IQ displays [-No Change-] in the Stack Template drop-down list, rather than the new template name.</p>
DAPC-186	<p>ExtremeCloud IQ does not display the management VLAN information in the Devices table.</p>
DAPC-73	<p>When resetting multiple switches simultaneously to factory default settings, ExtremeCloud IQ erroneously reports that the reset was unsuccessful.</p>



Device Support Information

- [Controllers](#) on page 15
- [Access Points](#) on page 16
- [Switches](#) on page 19
- [Routers](#) on page 26
- [Site Engine](#) on page 27
- [CoPilot](#) on page 28
- [A3](#) on page 28
- [Supported Web Browsers](#) on page 29

This section lists the devices that ExtremeCloud IQ supports and includes the latest version of the software that each device supports.

Controllers

Device Model	Latest Supported Release	Comments
E1120	XIQC 10.05.02	Monitor only
E2120	XIQC 10.05.02	Monitor only
E2122	XIQC 10.05.02	Monitor Only
E3120	XIQC 10.05.02	Monitor only
VE6120	XIQC 10.05.02	Monitor only
VE6120H	XIQC 10.05.02	Monitor only
VE6120K	XIQC 10.05.02	Monitor Only
VE6125	XIQC 10.05.02	Monitor only
VE6125K	XIQC 10.05.02	Monitor Only
NX5500	WiNG OS 7.9.0.0	Monitor only
NX7500 Series	WiNG OS 7.9.0.0	Monitor only
NX9500 Series	WiNG OS 7.7.1.5	Monitor only
NX9600 Series	WiNG OS 7.9.0.0	Monitor only
RFS4000 Series	WiNG OS 5.9.7.1	Monitor only
RFS6000 Series	WiNG OS 5.9.1.8	Monitor only
RFS7000 Series	WiNG OS 5.8.6.11	Monitor only
VX9000	WiNG OS 7.9.0.0	Monitor only

Access Points

Access Point information is provided in the following sections:

- [Universal Hardware](#) on page 16
- [IQ Engine \(Cloud Native\)](#) on page 17
- [WiNG](#) on page 18
- [Extreme Wireless](#) on page 19

Universal Hardware

Device Model	Latest Supported Release	Comments
AP305C	IQ Engine 10.6r1 WiNG OS 7.7.1.7 IQC 10.5.2.0	Platform support introduced with IQ Engine 10.1r1.
AP305C-1	IQ Engine 10.6r1 WiNG OS 7.7.1.7 IQC 10.5.2.0	Platform support introduced with IQ Engine 10.4r6.
AP305CX	IQ Engine 10.6r1 WiNG OS 7.7.1.7 IQC 10.5.2.0	Platform support introduced with IQ Engine 10.1r1.
AP3000/AP3000X	IQ Engine 10.6r1	Platform support introduced with IQ engine 10.6r1
AP4000	IQ Engine 10.6r1 IQC 10.5.2.0	Platform support introduced with IQ Engine 10.4r1
AP4000-1	IQ Engine 10.6r1 IQC 10.5.2.0	Platform support introduced with IQ Engine 10.4r2
AP302W	IQ Engine 10.6r1 WiNG OS 7.7.1.7 IQC 10.5.2.0	Platform support introduced with IQ Engine 10.3r1.
AP410C	IQ Engine 10.6r1 WiNG OS 7.7.1.7 IQC 10.5.2.0	Platform support introduced with IQ Engine 10.1r2
AP410C-1	IQ Engine 10.6r1 WiNG OS 7.7.1.7 IQC 10.5.2.0	Platform support introduced with IQ Engine 10.4r6
AP460C	IQ Engine 10.6r1 WiNG OS 7.7.1.7 IQC 10.5.2.0	Platform support introduced with IQ Engine 10.1r2
AP460S6C	IQ Engine 10.6r1 WiNG OS 7.7.1.7 IQC 10.5.2.0	Platform support introduced with IQ Engine 10.1r2
AP460S12C	IQ Engine 10.6r1 WiNG OS 7.7.1.7 IQC 10.5.2.0	Platform support introduced with IQ Engine 10.1r2

Device Model	Latest Supported Release	Comments
AP5010	IQ Engine 10.6r1 IQC 10.5.2.0 WiNG OS 7.9.0.1	Platform support introduced with IQ Engine 10.5r1
AP5050U	IQ Engine 10.6r1 IQC 10.5.2.0	Platform support introduced with IQ Engine 10.5r3
AP5050D	IQ Engine 10.6r1 IQC 10.5.2.0	Platform support introduced with IQ Engine 10.5r3

IQ Engine (Cloud Native)

Device Model	Latest Supported Release	Comments
AP630	IQ Engine 10.6r1	Platform support introduced with IQ Engine 10.0r1. End of Life Information
AP650	IQ Engine 10.6r1	Platform support introduced with IQ Engine 10.0r1. End of Life Information
AP650X	IQ Engine 10.6r1	Platform support introduced with IQ Engine 10.0r1. End of Life Information
AP1130	IQ Engine 10.5r3	Platform support introduced with IQ Engine 8.2r1. End of Life Information
AP550	IQ Engine 10.5r3	Platform support introduced with IQ Engine 7.0r3. End of Life Information
AP390	IQ Engine 6.5r16	End of Life Information
AP370	IQ Engine 6.5r16	End of Life Information
AP350	IQ Engine 6.5r10	End of Life Information
AP340	IQ Engine 6.5r16	End of Life Information
AP330	IQ Engine 6.5r16	End of Life Information
AP320	IQ Engine 6.5r10	End of Life Information
AP250	IQ Engine 10.6r1	Platform support introduced with IQ Engine 7.0r2.
AP245X	IQ Engine 10.5r3	Platform support introduced with IQ Engine 7.0r2. End of Life Information
AP230	IQ Engine 10.5r3	Platform support introduced with IQ Engine 8.2r1. End of Life Information
AP170	IQ Engine 6.5r16	End of Life Information
AP150W	IQ Engine 10.6r1	Platform support introduced with IQ Engine 8.1r1.
AP141	IQ Engine 6.5r16	End of Life Information

Device Model	Latest Supported Release	Comments
AP130	IQ Engine 10.6r1	Platform support introduced with IQ Engine 8.2r1. End of Life Information
AP122	IQ Engine 10.6r1	Platform support introduced with IQ Engine 7.0r4.
AP122X	IQ Engine 10.5r3	Platform support introduced with IQ Engine 8.2r1. End of Life Information
AP121	IQ Engine 6.5r16	End of Life Information
AP120	IQ Engine 6.5r10	End of Life Information
Atom AP30	IQ Engine 10.6r1	Platform support introduced with IQ Engine 8.3r2.
AP510C/CX	IQ Engine 10.6r1	Platform support introduced with IQ Engine 10.0r8

WiNG

Device Model	Latest Supported Release	Comments
AP560i	WiNG OS 7.7.1.7	Monitor only
AP560h	WiNG OS 7.7.1.7	Monitor only
AP505	WiNG OS 7.7.1.7	Monitor only
AP510i	WiNG OS 7.7.1.7	Monitor only
AP510i-1	WiNG OS 7.7.1.7	Monitor only
AP460i/e	WiNG OS 7.7.1.7	Monitor only
AP410i/e	WiNG OS 7.7.1.7	Monitor only
AP410i-1	WiNG OS 7.7.1.7	Monitor only
AP360i/e	WiNG OS 7.7.1.7	Monitor only
AP310i/e	WiNG OS 7.7.1.7	Monitor only
AP310i/e-1	WiNG OS 7.7.1.7	Monitor Only
AP8533	WiNG OS 7.7.1.7	Monitor only
AP8432	WiNG OS 7.7.1.7	Monitor only
AP8232	WiNG OS 5.9.1.8	Monitor only
AP8222	WiNG OS 5.8.6.11	Monitor only
AP8163	WiNG OS 5.9.7.1	Monitor only
AP8132	WiNG OS 5.9.1.8	Monitor only
AP8122	WiNG OS 5.9.1.8	Monitor only
AP7662	WiNG OS 7.7.1.7	Monitor only
AP7632	WiNG OS 7.7.1.7	Monitor only
AP7622	WiNG OS 5.9.7.1	Monitor only
AP7612	WiNG OS 7.7.1.7	Monitor only

Device Model	Latest Supported Release	Comments
AP7602	WiNG OS 5.9.7.1	Monitor only
AP7562	WiNG OS 7.7.1.7	Monitor only
AP7532	WiNG OS 7.7.1.7	Monitor only
AP7522	WiNG OS 7.7.1.7	Monitor only
AP7502	WiNG OS 5.9.7.1	Monitor only
AP7161	WiNG OS 5.9.1.8	Monitor only
AP7131	WiNG OS 5.8.6.11	Monitor only
AP6562	WiNG OS 5.9.1.8	Monitor only
AP6532	WiNG OS 5.9.1.8	Monitor only
AP6522	WiNG OS 5.9.1.8	Monitor only
AP6521	WiNG OS 5.9.1.8	Monitor only
AP6511	WiNG OS 5.8.6.11	Monitor only

Extreme Wireless

Device Model	Latest Supported Release	Comments
AP3965	ExtremeWireless 10.51	Monitor only
AP3935	ExtremeWireless 10.51	Monitor only
AP3917	ExtremeWireless 10.51	Monitor only
AP3916C	ExtremeWireless 10.51	Monitor only
AP3915	ExtremeWireless 10.51	Monitor only
AP3912	ExtremeWireless 10.51	Monitor only
SA201	ExtremeWireless 10.51	Monitor only

Switches

Switch information is provided in the following sections:

- [Universal Hardware](#) on page 20
- [ExtremeXOS](#) on page 23
- [VOSS](#) on page 25
- [IQ Engine \(Cloud Native\)](#) on page 25
- [Dell EMC](#) on page 26

For the latest Fabric Engine Release Notes, see [here](#).

For the latest Switch Engine Release Notes, see [here](#).

Universal Hardware

Device Model	Latest Supported Release	Standalone Support	Stack Support
5320-16P-4XE	Switch Engine 32.4, Fabric Engine 8.10	Monitor, template, and device-level configuration, and SSH Proxy Available	Monitor, template, device-level configuration, and SSH Proxy Available when operating with Switch Engine
5320-16P-4XE- DC	Switch Engine 32.4, Fabric Engine 8.10	Monitor, template, and device-level configuration, and SSH Proxy Available	Monitor, template- and device-level configuration, and SSH Proxy Available when operating with Switch Engine
5320-24T-4XE	Switch Engine 32.4, Fabric Engine 8.10	Monitor, template, and device-level configuration, and SSH Proxy Available	Monitor, template- and device-level configuration, and SSH Proxy Available
5320-24PT-4X E	Switch Engine 32.4, Fabric Engine 8.10	Monitor, template, and device-level configuration, and SSH Proxy Available	Monitor, template- and device-level configuration, and SSH Proxy Available
5320-48P-4XE	Switch Engine 32.4, Fabric Engine 8.10	Monitor, template, and device-level configuration, and SSH Proxy Available	Monitor, template- and device-level configuration, and SSH Proxy Available
5320-48T-4XL	Switch Engine 32.4, Fabric Engine 8.10	Monitor, template, and device-level configuration, and SSH Proxy Available	Monitor, template- and device-level configuration, and SSH Proxy Available
5420F-24T-4X E	Switch Engine 32.4, Fabric Engine 8.10	Monitor, template, and device-level configuration, and SSH Proxy Available	Monitor, template- and device-level configuration, and SSH Proxy Available
5420F-24P-4X E	Switch Engine 32.4, Fabric Engine 8.10	Monitor, template, and device-level configuration, and SSH Proxy Available	Monitor, template- and device-level configuration, and SSH Proxy Available
5420F-24S-4X E	Switch Engine 32.4, Fabric Engine 8.10	Monitor, template, and device-level configuration, and SSH Proxy Available	Monitor, template- and device-level configuration, and SSH Proxy Available
5420F-48T-4X E	Switch Engine 32.4, Fabric Engine 8.10	Monitor, template, and device-level configuration, and SSH Proxy Available	Monitor, template- and device-level configuration, and SSH Proxy Available

Device Model	Latest Supported Release	Standalone Support	Stack Support
5420F-48P-4XE	Switch Engine 32.4, Fabric Engine 8.10	Monitor, template, and device-level configuration, and SSH Proxy Available	Monitor, template- and device-level configuration, and SSH Proxy Available
5420F-48P-4XL	Switch Engine 32.4, Fabric Engine 8.10	Monitor, template, and device-level configuration, and SSH Proxy Available	Monitor, template- and device-level configuration, and SSH Proxy Available
5420F-8W-16P-4XE	Switch Engine 32.4, Fabric Engine 8.10	Monitor, template, and device-level configuration, and SSH Proxy Available	Monitor, template- and device-level configuration, and SSH Proxy Available
5420F-16W-32P-4XE	Switch Engine 32.4, Fabric Engine 8.10	Monitor, template, and device-level configuration, and SSH Proxy Available	Monitor, template- and device-level configuration, and SSH Proxy Available
5420F-16MW-32P-4XE	Switch Engine 32.4, Fabric Engine 8.10	Monitor, template, and device-level configuration, and SSH Proxy Available	Monitor, template- and device-level configuration, and SSH Proxy Available
5420M-24T-4YE	Switch Engine 32.4, Fabric Engine 8.10	Monitor, template, and device-level configuration, and SSH Proxy Available	Monitor, template- and device-level configuration, and SSH Proxy Available
5420M-24W-4YE	Switch Engine 32.4, Fabric Engine 8.10	Monitor, template, and device-level configuration, and SSH Proxy Available	Monitor, template- and device-level configuration, and SSH Proxy Available
5420M-48T-4YE	Switch Engine 32.4, Fabric Engine 8.10	Monitor, template, and device-level configuration, and SSH Proxy Available	Monitor, template- and device-level configuration, and SSH Proxy Available
5420M-48W-4YE	Switch Engine 32.4, Fabric Engine 8.10	Monitor, template, and device-level configuration, and SSH Proxy Available	Monitor, template- and device-level configuration, and SSH Proxy Available
5420M-16MW-32P-4YE	Switch Engine 32.4, Fabric Engine 8.10	Monitor, template, and device-level configuration, and SSH Proxy Available	Monitor, template- and device-level configuration, and SSH Proxy Available
5520-24W	Switch Engine 32.4, Fabric Engine 8.10	Monitor, template- and device-level configuration, and SSH Proxy Available	Monitor, template- and device-level configuration, and SSH Proxy Available
5520-24T	Switch Engine 32.4, Fabric Engine 8.10	Monitor, template- and device-level configuration, and SSH Proxy Available	Monitor, template- and device-level configuration, and SSH Proxy Available

Device Model	Latest Supported Release	Standalone Support	Stack Support
5520-48W	Switch Engine 32.4, Fabric Engine 8.10	Monitor, template- and device-level configuration, and SSH Proxy Available	Monitor, template- and device-level configuration, and SSH Proxy Available
5520-48T	Switch Engine 32.4, Fabric Engine 8.10	Monitor, template- and device-level configuration, and SSH Proxy Available	Monitor, template- and device-level configuration, and SSH Proxy Available
5520-12MW-36 W	Switch Engine 32.4, Fabric Engine 8.10	Monitor, template- and device-level configuration, and SSH Proxy Available	Monitor, template- and device-level configuration, and SSH Proxy Available
5520-48SE	Switch Engine 32.4, Fabric Engine 8.10	Monitor, template- and device-level configuration, and SSH Proxy Available	Monitor, template- and device-level configuration, and SSH Proxy Available
5520-24X	Switch Engine 32.4, Fabric Engine 8.10	Monitor, template- and device-level configuration, and SSH Proxy Available	Monitor, template- and device-level configuration, and SSH Proxy Available
5720-24MW	Switch Engine 32.4, Fabric Engine 8.10	Monitor, template- and device-level configuration, and SSH Proxy Available	Monitor, template, device-level configuration, and SSH Proxy Available when operating with Switch Engine
5720-48MW	Switch Engine 32.4, Fabric Engine 8.10	Monitor, template- and device-level configuration, and SSH Proxy Available	Monitor, template, device-level configuration, and SSH Proxy Available when operating with Switch Engine
5720-24MXW	Switch Engine 32.4, Fabric Engine 8.10	Monitor, template- and device-level configuration, and SSH Proxy Available	Monitor, template, device-level configuration, and SSH Proxy Available when operating with Switch Engine
5720-48MXW	Switch Engine 32.4, Fabric Engine 8.10	Monitor, template- and device-level configuration, and SSH Proxy Available	Monitor, template, device-level configuration, and SSH Proxy Available when operating with Switch Engine

ExtremeXOS

Device Model	Latest Supported Release	Standalone Support	Stack Support
X435-8P-2T-W	ExtremeXOS 32.4	Monitor, template- and device-level configuration, and SSH Proxy Available	N/A
X435-24T-4S	ExtremeXOS 32.4	Monitor, template- and device-level configuration, and SSH Proxy Available	N/A
X435-24P-4S	ExtremeXOS 32.4	Monitor, template- and device-level configuration, and SSH Proxy Available	N/A
X435-8T-4S	ExtremeXOS 32.4	Monitor, template- and device-level configuration, and SSH Proxy Available	N/A
X435-8P-4S	ExtremeXOS 32.4	Monitor, template- and device-level configuration, and SSH Proxy Available	N/A
X440-G2-12p-10GE4	ExtremeXOS 32.4	Monitor, template- and device-level configuration, and SSH Proxy Available	Monitor, template- and device-level configuration, and SSH Proxy Available
X440-G2-12t-10GE4	ExtremeXOS 32.4	Monitor, template- and device-level configuration, and SSH Proxy Available	Monitor, template- and device-level configuration, and SSH Proxy Available
X440-G2-24p-10GE4	ExtremeXOS 32.4	Monitor, template- and device-level configuration, and SSH Proxy Available	Monitor, template- and device-level configuration, and SSH Proxy Available
X440-G2-24t-10GE4	ExtremeXOS 32.4	Monitor, template- and device-level configuration, and SSH Proxy Available	Monitor, template- and device-level configuration, and SSH Proxy Available
X440-G2-48p-10GE4	ExtremeXOS 32.4	Monitor, template- and device-level configuration, and SSH Proxy Available	Monitor, template- and device-level configuration, and SSH Proxy Available
X440-G2-48t-10GE4	ExtremeXOS 32.4	Monitor, template- and device-level configuration, and SSH Proxy Available	Monitor, template- and device-level configuration, and SSH Proxy Available

Device Model	Latest Supported Release	Standalone Support	Stack Support
X450-G2-24p-GE4	ExtremeXOS 32.4	Monitor, template- and device-level configuration, and SSH Proxy Available	Monitor Only
X450-G2-24p-10GE4	ExtremeXOS 32.4	Monitor, template- and device-level configuration, and SSH Proxy Available	Monitor Only
X450-G2-48p-10GE4	ExtremeXOS 32.4	Monitor, template- and device-level configuration, and SSH Proxy Available	Monitor Only
X460-G2-24p-10GE4	ExtremeXOS 32.4	Monitor, template- and device-level configuration, and SSH Proxy Available	Monitor Only
X460-G2-48p-10GE4	ExtremeXOS 32.4	Monitor, template- and device-level configuration, and SSH Proxy Available	Monitor Only
X465-24W	ExtremeXOS 32.4	Monitor, template- and device-level configuration, and SSH Proxy Available	Monitor Only
X465-48W	ExtremeXOS 32.4	Monitor, template- and device-level configuration, and SSH Proxy Available	Monitor Only
X465-24MU	ExtremeXOS 32.4	Monitor, template- and device-level configuration, and SSH Proxy Available	Monitor Only
X465-48P	ExtremeXOS 32.4	Monitor, template- and device-level configuration, and SSH Proxy Available	Monitor Only
X465-24MU-24W	ExtremeXOS 32.4	Monitor, template- and device-level configuration, and SSH Proxy Available	Monitor Only

VOSS

Device Model	Latest Supported Release	Standalone Support	Stack Support
VSP7432CQ	VOSS 8.10	Monitor, template- and device-level configuration, and SSH Proxy Available	Not Supported
VSP7400-48Y	VOSS 8.10	Monitor, template- and device-level configuration, and SSH Proxy Available	Not Supported
VSP4900-48P	VOSS 8.10	Monitor, template- and device-level configuration, and SSH Proxy Available	Not Supported
VSP4900-24XE	VOSS 8.10	Monitor, template- and device-level configuration, and SSH Proxy Available	Not Supported
VSP4900-24S	VOSS 8.10	Monitor, template- and device-level configuration, and SSH Proxy Available	Not Supported
VSP4900-12MXU-12XE	VOSS 8.10	Monitor, template- and device-level configuration, and SSH Proxy Available	Not Supported
XA1480	VOSS 8.10	Monitor, template- and device-level configuration, and SSH Proxy Available	Not Supported
XA1440	VOSS 8.10	Monitor, template- and device-level configuration, and SSH Proxy Available	Not Supported

IQ Engine (Cloud Native)

Device Model	Latest Supported Release
SR2024 End of Life	IQ Engine 6.5r12
SR2024P End of Life	IQ Engine 6.5r12
SR2124P End of Life	IQ Engine 6.5r12
SR2148P End of Life	IQ Engine 6.5r12
SR2208P	FASTPATH 8.2.0.2 v1.0.1.29 IQAgent 1.1.31
SR2224P	FASTPATH 8.2.0.2 v1.0.1.29 IQAgent 1.1.31
SR2324P	FASTPATH 8.2.0.2 v1.0.1.29 IQAgent 1.1.31
SR2348P	FASTPATH 8.2.0.2 v1.0.1.29 IQAgent 1.1.31

Dell EMC

Device Model	Latest Supported Release
N3132PX	IQAgent 1.1.29
N3024EF	IQAgent 1.1.29
N3024EP	IQAgent 1.1.29
N3024ET	IQAgent 1.1.29
N3048EP	IQAgent 1.1.29
N3048ET	IQAgent 1.1.29
N3024	IQAgent 1.1.29
N3024F	IQAgent 1.1.29
N3024P	IQAgent 1.1.29
N3048	IQAgent 1.1.29
N3048P	IQAgent 1.1.29
N2128PX	IQAgent 1.1.29
N2024	IQAgent 1.1.29
N2024P	IQAgent 1.1.29
N2048	IQAgent 1.1.29
N2048P	IQAgent 1.1.29
N1524	IQAgent 1.1.29
N1524P	IQAgent 1.1.29
N1548	IQAgent 1.1.29
N1548P	IQAgent 1.1.29
N1108T-ON	IQAgent 1.1.29
N1108P-ON	IQAgent 1.1.29
N1124T-ON	IQAgent 1.1.29
N1124P-ON	IQAgent 1.1.29
N1148T-ON	IQAgent 1.1.29
N1148P-ON	IQAgent 1.1.29

Routers

Device Model	Latest Supported Release	Standalone Support
BR100 End of Life	IQ Engine 6.5r12	<i>Not supported in ExtremeCloud IQ</i>
BR200 End of Life	IQ Engine 6.5r12	<i>Not supported in ExtremeCloud IQ</i>
BR200-LTE-VZ End of Life	IQ Engine 6.5r12	<i>Not supported in ExtremeCloud IQ</i>

Device Model	Latest Supported Release	Standalone Support
BR200WP End of Life	IQ Engine 6.9r7	
XR200P	IQ Engine 6.9r7	Platform support introduced with IQ Engine 6.9r2
XR600	IQ Engine 10.0r11	Platform support introduced with IQ Engine 9.0r1
XR600P	IQ Engine 10.0r11	Platform support introduced with IQ Engine 9.0r1
VGVA	IQ Engine 6.9r7	

Site Engine

ExtremeCloud IQ - Site Engine Version	Tested & Supported Features
22.06.10.70	License allocation, Device Statistics, Port Statistics, Unmanage/Manage device, Device Group to CCG mapping, Open Site Engine with SSO
22.06.12.13	License allocation, Device Statistics, Port Statistics, Unmanage/Manage device, Device Group to CCG mapping, Open Site Engine with SSO
22.06.13.09	License allocation, Device Statistics, Port Statistics, Unmanage/Manage device, Device Group to CCG mapping, Open Site Engine with SSO
22.09.10.73	License allocation, Device Statistics, Port Statistics, Unmanage/Manage device, Device Group to CCG mapping, Open Site Engine with SSO
22.09.11.14	License allocation, Device Statistics, Port Statistics, Unmanage/Manage device, Device Group to CCG mapping, Open Site Engine with SSO
22.09.12.14	License allocation, Device Statistics, Port Statistics, Unmanage/Manage device, Device Group to CCG mapping, Open Site Engine with SSO
22.09.13.5	License allocation, Device Statistics, Port Statistics, Unmanage/Manage device, Device Group to CCG mapping, Open Site Engine with SSO
23.02.10	License allocation, Device Statistics, Port Statistics, Unmanage/Manage device, Device Group to CCG mapping, Open Site Engine with SSO, Stack members
23.02.11	License allocation, Device Statistics, Port Statistics, Unmanage/Manage device, Device Group to CCG mapping, Open Site Engine with SSO, Stack members

ExtremeCloud IQ - Site Engine Version	Tested & Supported Features
23.04.10	License allocation, Device Statistics, Port Statistics, Unmanage/Manage device, Device Group to CCG mapping, Open Site Engine with SSO, Stack members
23.4.11	License allocation, Device Statistics, Port Statistics, Unmanage/Manage device, Device Group to CCG mapping, Open Site Engine with SSO, Stack members

CoPilot

CoPilot Feature	Minimum Firmware				
	IQ Engine	Switch Engine	Fabric Engine	EXOS	VOSS
WiFi Efficiency	10.5r2*	--	--	--	--
WiFi Capacity	10.5r2*	--	--	--	--
PoE Stability	10.5r2*	32.1	8.6	32.1	8.6
Port Efficiency	10.5r2**	31.7	8.6	31.7	8.6
DFS Recurrence	10.5r2*	--	--	--	--
Adverse Traffic Patterns	10.5r2*	31.7	8.6	31.7	8.6
Time to Associate (Wireless Connectivity Experience)	10.5r2*	--	--	--	--
Time to Authenticate (Wireless Connectivity Experience)	10.5r2*	--	--	--	--
Time to obtain IP (Wireless Connectivity Experience)	10.5r2	--	--	--	--
Port Errors (Wired Connectivity Experience)	--	31.7	8.6	31.7	8.6

*beta support from 10.4

**beta support from 10.5r1

A3

ExtremeCloud A3 Version	Tested & Supported Features
4.1.0-9	Licensing, Status Monitoring, SSO
4.1.1-5	Licensing, Status Monitoring, SSO
5.0.0-12	Licensing, Status Monitoring, SSO, Client Details
5.0.1-4	Licensing, Status Monitoring, SSO, Client Details

Supported Web Browsers



Note

32-bit browsers are not supported.

Desktop Browsers	Mobile Browsers
N/A	Android Webview: v73
Chrome: v73	Chrome for Android: v73
Edge: v79	Edge: v79
Firefox: v67	Firefox for Android: v67
Internet Explorer: Not Supported	N/A
Opera: v60	Opera for Android: v52
Safari: v13	Safari for iOS: v13
N/A	Samsung Internet: Not Supported