

HiveManager 6.8r7a Release Notes

Release Date: January 24, 2017

Release Versions: HiveManager 6.8r7a

Platforms supported: AP110/120, AP121/141, AP130, AP170, AP230, AP250, AP245X, AP320/AP340, AP330/AP350, AP370/AP390, AP550, AP1130, BR100, BR200, BR200-WP, BR200-LTE-VZ, SR2024P, SR2124P, SR2048P, VPN Gateway Virtual Appliance.

New Features and Enhancements

This release adds HiveOS 6.5r6 support.

Upgrading HiveManager Software

Aerohive supports upgrading to the 6.8r7a HiveManager software from HiveManager 5.1r2 releases or later. If your system is running an image earlier than 5.1r2, follow the steps in the 5.1r2 Aerohive release notes to upgrade HiveManager to 5.1r2 before upgrading your system to 6.8r7a.

Upgrade HiveManager 5.1r2 or later to 6.8r7a

Use the following procedure to upgrade a HiveManager standalone or HA pair.

From	Action	To
HiveManager 5.1r2 or later	Upgrade to HiveManager 6.8r7a.	HiveManager 6.8r7a
HiveOS 5.1r2 or later	Use HiveManager running HiveManager 6.8r7a to manually upgrade managed devices to HiveOS 6.5r6.	HiveOS 6.5r6

Upgrading the HiveManager Appliance

1	Back up your database as a safety precaution. Navigate to Home > Administration > HiveManager Operations > Back Up Database .
2	Save the 6.8r7a HiveManager software file to a directory on your management system or SCP server. (Log in and download the 6.8r7a HiveManager software file from the Aerohive Support page.)
3	Log in to HiveManager running 5.1r2 or later and then upload the 6.8r7a HiveManager software file. To update HiveManager, click Home > HiveManager Operations > Update Software , select the method to upload the HiveManager software, and then click OK . When the upload is complete, HiveManager automatically reboots to activate its new software.

Upgrading the HiveManager Appliance

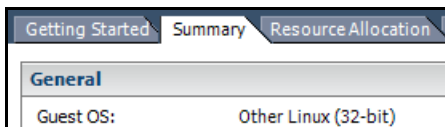
- 4 HiveManager periodically checks for new HiveOS firmware releases that it can download to itself for distribution to managed devices. If HiveManager is connected to the Internet, it automatically obtains HiveOS firmware image files for every type of managed device from the Aerohive update server and HiveManager makes the image files available in about 15-30 minutes, depending on how many image files it is downloading and its connection speed to the server.
- To update the HiveOS firmware image files manually, log back in to HiveManager, select the device or devices of the same type for which you want to update the HiveOS firmware, click **Update > Advanced > Upload and Activate HiveOS Firmware**, select the appropriate HiveOS image from the list for the selected device type, and then click **Upload**. If the firmware is not available in the list of HiveOS images, click **Add/Remove** and obtain the HiveOS image you want from the update server, your local directory, or SCP server. If you are managing various Aerohive device types, repeat the upload process for all your managed devices, and then reboot them to activate their new firmware.

Increasing Memory, CPU, and VM Param Settings for the HiveManager Virtual Appliance

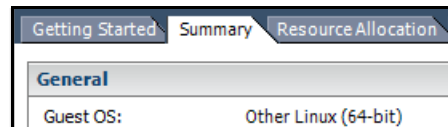
Before you can upgrade a 32-bit HiveManager Virtual Appliance to 6.0 or later, you must increase the memory for it within the ESXi hypervisor to 3 gigabytes, set the number of virtual sockets for its CPU to 2, and change VM parameters to 1024 megabytes.

(((i))) Upgrading the 64-bit HiveManager Virtual Appliance to 6.0 or later does not require any changes to its default memory (4 GB), CPU (4 virtual sockets), and VM param settings (1480 MB). A new 6.8r7a installation of a 64-bit HiveManager Virtual Appliance .ova file has a new default memory size of 8 GB.

1. From the vSphere Client on your management system, log in to the ESXi hypervisor hosting the HiveManager Virtual Appliance whose memory you want to increase.
2. To check which type of system you have, select the name of the HiveManager Virtual Appliance, click **Summary**, and check whether the Guest OS indicates that it is 32 or 64 bits.



32-bit HiveManager Virtual Appliance



64-bit HiveManager Virtual Appliance

3. If it is a 32-bit system, keep the name of the HiveManager Virtual Appliance selected, click the **Console** tab, click in the console window, and then log in to the HiveManager CLI shell. If it is a 64-bit system and is still using the default settings, you are not required to change them. However, if you want to, you can increase the memory from 4 GB to 8 GB by performing the following steps.

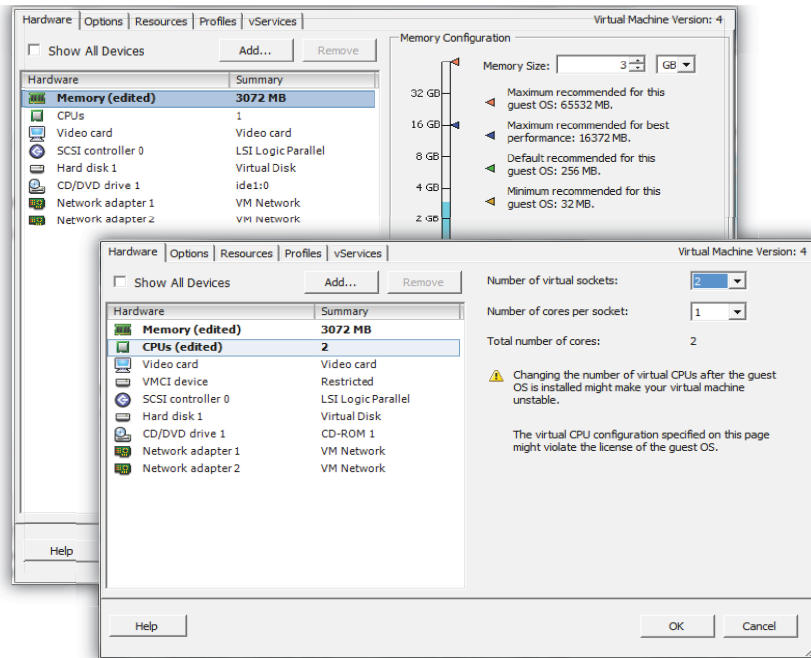
```

1) Network Settings and Tools
2) Display System Information
3) Advanced Product Configuration
4) Reboot Appliance
5) Shut down the System
6) Change CLI Shell Password
7) Logout of shell
Please make a choice:

```

4. To shut down the virtual appliance, enter **5** (Shut down the system) and then enter **Y** when prompted to confirm the action.

- In the vSphere Client GUI, right-click the HiveManager Virtual Appliance name in the left navigation panel, and then click **Edit Settings**.
- On the *Hardware* tab, click **Memory**, change the value in the Memory Size field to **3 GB** for a 32-bit system or up to **8 GB** for a 64-bit system, and then click **OK**. (For a 64-bit system using its default values, there is no need to change any other settings.)
- For a 32-bit system, select **CPUs** from the Number of virtual sockets drop-down list, select **2**, and then click **OK**.



- With the name of the HiveManager Virtual Appliance still selected, click **Power on the virtual machine**.
- After the HiveManager Virtual Appliance is powered back on, click the **Console** tab, click in the console window, and log in to the HiveManager CLI shell.
- Enter **3 - 2 - 2** to navigate to **Advanced Product Configuration > Configure VM Params > Change VM Params**, and then enter **1024** (for 1 GB).
- Reboot the HiveManager Virtual Appliance to apply this setting. (You can navigate back to the home menu, and enter **4** for Reboot Appliance.)
- After the HiveManager Virtual Appliance finishes rebooting, check that it recognizes its increased memory size by returning to the console window, logging back in to the HiveManager CLI shell, and entering **2 - 4** (Display System Information > Display Hardware Information). To complete the memory upgrade procedure, check that the MemTotal value for a 32-bit system is approximately 3,000,000 KB. (The MemTotal value for a 64-bit system is approximately 8,000,000 KB.)

Documentation

Product documentation is still in progress at the time of these releases and is not yet available. However, the Help for HiveOS CLI commands is ready. To use the CLI Help, enter `keyword-SPACE-?` (for example: `qos?`). In addition, there are online CLI reference guides that provide the syntax and explanations for every command in the CLI. They also include information on accessing the CLI through console, Telnet, and SSH connections, tips on using the CLI, and some keyboard shortcuts.

Help System for Mobile Devices

Aerohive provides a way for you to view the Help system on a mobile device. The Aerohive Help is designed to be responsive, so in cases where viewing the Help system in a browser is inconvenient or impossible, you can view the Help content on your smart phone or tablet.

Known Issues

The following are known issues in the current HiveManager and previous HiveManager releases:

Known Issues in HiveManager 6.8r7a

There are no known issues in the HiveManager 6.8r7a release.

Addressed Issues

The following issues were addressed in the current and previous HiveManager releases.

Addressed Issues in HiveManager 6.8r7a

HMGR-1577	Added support for the HOS 6.5r6 release.
HMGR-1576	Added the ability for HiveManager Classic to recognize and memorize Golden Image information.
HMGR-1494	Added AES 128-bit encryption to improve SNMP security.
HMGR-1459	HiveManager now generates an alarm whenever an AP needs to perform a configuration rollback.
HMGR-1430	Added Golden Image Support in HiveManager Classic

Addressed Issues in HiveManager 6.8r7

CFD-2123	Customer was unable to create an SSH connection to APs after upgrading to 6.5r5.
CFD-2122	In HiveManager 6.6r1, after designating which maps can be viewed and accessed, the saved maps did not appear in the available maps list.
CFD-2199	Dashboard data was not appearing in the device group summary for APs in some buildings.
CFD-2206	HiveManager appliance failed to push a configuration to the active secondary HiveManager after a failover from primary to secondary.
CFD-2212	HTTP proxy server settings disappeared from APs after a complete configuration push in HiveManager 6.5r5 and HiveOS 6.8r1.
CFD-2217	For APs configured with the Romanian country code (642), HiveManager did not configure the 5 GHz interface correctly.
CFD-2224	The backup (passive) CAPWAP client server name was not included in the configuration of a HA pair.
HMGR-1555	Although the Bonjour-Gateway option was deselected, the network policy still shows the Bonjour-gateway profile in the HiveManager UI.

HMGR-1544	Changing the Tx Retry Rate Alarm Threshold setting for multiple APs at once was not successful.
HMGR-1542	HiveManager Online generated incorrect ip-policy ids, causing configuration uploads to fail.
HMGR-1523	Although the AP550 supports four radio chains, HiveManager NG 6.8r6 treated it as a 3-chain platform.
HMGR-1517	VPN server support was removed for AP100 series devices due to performance impact.
HMGR-1515	The ability to detect IoT devices was added to HiveManager NG.
HMGR-1496	HiveManager issued an incorrectly formatted command to configure the red0 interface to allow all VLANs.
HMGR-1477	SR2148P switch running 6.5r5 does not support secure ports, however after upgrading to 6.8r6, secure-port settings are pushed to the switch, resulting in the disconnection of any APs associated with the switch.
HMGR-1454	After upgrading from 6.8r3 to 6.8r5, the Explicit only transmit beamforming mode setting was returned to Auto.
HMGR-1327	For either an automatic or manually-issued LED power-saving mode command, a delta configuration update returns a "no LED power saving mode" error.

Addressed Issues in HiveManager 6.8r6

CFD-2002	HiveManager defined the management VLAN as VLAN 1 even when a different VLAN number was specified.
CFD-2076	HiveManager sometimes did not upgrade from 6.8r3 to 6.8r4
CFD-2102	AP121 devices did not receive the correct application signature files when upgrading from 6.6r3.
CFD-2159	APs were not being redirected to the new server after an upgrade from 6.8r4 to 6.8r5.
CFD-2175	Network policy parameters were changing arbitrarily after an upgrade to 6.8r3.
HMGR-1459	HiveManager was not supporting a rollback in the event of an alarm.
HMGR-1470	The CAPWAP servers were not responding.
HMGR-1471	Support for HiveOS 7.1r1 for AP130, AP1130, AP230, AP250, AP550, and AP245X.

Addressed Issues in HiveManager 6.8r5

CFD-2032	User logins that were identical except for letter capitalization were granting different access levels. For example a user logging in as AdamSouth@123.com was granted proper limited access based on their assigned user group, but if the same user logged in as adamsouth@123.com, they were granted full network access.
CFD-2030	The country code could not be changed to Canada for APs running HiveOS 6.5r4 and HiveOS 6.8r1 and HiveManager 6.8r3.
CFD-2026	Although HiveManager 6.5r1 was operating normally, email notifications for CAPWAP connections were taking over an hour to arrive.
CFD-2016	Upgrading to HiveManager versions later then 6.2r1 caused user profiles to disappear.
CFD-1973	ID Manager PPSK users were unable to authenticate and instead received a "customer license has expired" message, even though the subscription was still valid.

CFD-1955	For IKE phase-1 configurations, the AES key length did not match between a BR200 and a HiveManager Virtual Appliance.
CFD-1882	Accented characters were appearing in customer's captive web portal as question marks (?).
CFD-1525	Attempts to generate a heat map sometimes displayed a "Temporarily Unavailable" page.
HMGR-1432	Change in behavior: With HM 6.8r7a, Aerohive recommends that channel separation should be at least three times the channel width (60 MHz for 20 MHz channels, and 120 MHz for 40 MHz channels).

Addressed Issues in HiveManager 6.8r4

CFD-1988	Customers experienced high CPU usage levels after upgrading from 6.8r2 to 6.8r3.
CFD-1984	When a social login SSID was configured, messages in the configuration audit were not displayed correctly.
CFD-1979	The configuration audit message for the LED power-saving mode was inconsistent.
CFD-1932	The VHM was not accessible and there were configuration errors after upgrading a HiveManager Virtual Appliance from 6.6r3 to 6.8r2.
CFD-1922	The customer received an error message when attempting to add presence analytics APs to a retail location.
CFD-1128	HiveManager displayed an incorrect number of selected APs when using filters.
HMGR-1311	SSHv2Hello has been deprecated due to security concerns.

Addressed Issues in HiveManager 6.8r2a

CFD-1844	When uploading a configuration containing changes to the LED behavior, HiveManager 6.8r2 returned a message indicating an XML problem.
----------	--

Addressed Issues in HiveManager 6.8r2

CFD-1792	An empty instance of major alerts were logged when major events occurred, regardless of whether major alerts were configured to be logged; however, when major alerts were configured to be logged, the empty alert was accompanied by the fully formed alert.
CFD-1767	HiveManager would return an empty report when a region or building was chosen instead of a specific floor to filter results.
CFD-1758	Client reports could not be generated for some short time periods, but were generated properly for longer time periods.

Addressed Issues in HiveManager 6.8r1

CFD-1574	The letters ä, ö, ü, and ß were not rendered properly in the localized German captive web portal acceptance policy text.
CFD-1535	HiveManager Online did not display historical client association data correctly if the requested time range exceeded three days.

CFD-1362	Some of the aggregated total values did not accurately reflect the arithmetic totals of the component values in the dashboard.
CFD-1128	HiveManager sometimes calculated the number of selected devices incorrectly when a filter was used and there were more devices selected than the page could display.

2017 ©Aerohive Networks, Inc.
Aerohive is a U.S. registered trademark of Aerohive Networks, Inc.

