



Extreme Management Center Customer Release Notes

Version 8.1.1.41
January, 2018

IMPORTANT: The Extreme Management Center version 8.1 Early Access release is a restricted access release available only to select customers. This release is available to All Extreme Sales Engineers & customers participating in the early access program. This release is intended for lab trials only.

Extreme Networks Extreme Management Center[®] provides a rich set of integrated management capabilities for centralized visibility and highly efficient anytime, anywhere control of enterprise wired and wireless network resources.

Extreme Management Center is distinguished by its web-based, unified control interface. Graphical and exceptionally easy-to-use, Extreme Management Center simplifies troubleshooting, help desk support tasks, problem-solving and reporting. ExtremeControl provides specialized visibility and control for managed and unmanaged devices connecting to the network.

Extreme Management Center's granularity reaches beyond ports, VLANs, and SSIDs down to individual users, applications, and protocols. Extreme Management Center increases efficiency, enabling IT staff to avoid time-consuming manual device-by-device configuration tasks. Extreme Management Center fills the functionality gap between traditional element managers that offer limited vendor-specific device control, and expensive, complex enterprise management applications.

The Extreme Management Center Release Notes provide information on the new features and enhancements included in version 8.1, as well as system requirements, and installation and upgrade information.

IMPORTANT: There are important upgrade and installation requirements for this release. Please review this information in the [Important Installation Considerations](#) and [Important Upgrade Considerations](#) sections.

The most recent version of these release notes can be found on the Extreme Management Center (NetSight) (NMS) Documentation web page: <https://extranet.extremenetworks.com/downloads>. After entering your email address and password, follow this path to the document: Software & Security > Extreme Management Center (NetSight) (NMS) > Documentation > Manuals & Release Notes > Extreme Management Center (NetSight) 8.1 > Extreme Management Center (NetSight) Suite.

Software Enhancements

Enhancements in Extreme Management Center 8.1

The new features and enhancements included in Extreme Management Center 8.1 are located in the [What's New in Extreme Management Center Version 8.1](#) topic.

Known Issues Addressed

This section presents the known issues addressed in Extreme Management Center 8.1.1.41:

Extreme Management Center Issues Addressed	ID
Using the carat (^) character in an Extreme Management Center Access Control script caused CLI commands to fail.	1409461
Opening the Advanced Settings window (Control > Access Control > Engine > Switches), the Override Shared Secret option was automatically enabling.	01404416
No data was displayed in the Used column in the Port Usage Details report (Reports > Reports > Device window).	01408284
Adding a device into a device group that shares a name with an existing device group was causing devices to be moved to an incorrect device group.	1410232
Some historical device and port data was not fully migrated in the 8.1.0 EA release.	-----

Virtual engines deployed on Hyper-V were configured with an incorrect amount of memory.	01389976
-----------------------------------------------------------------------------------------	----------

ExtremeAnalytics Issues Addressed	ID
------------------------------------------	-----------

Installing or initially deploying a version of Application Analytics prior to version 8.1.1.41 on an Analytics engine was allowing users to enter an incorrect ethernet port, which prevented the Application Analytics sensor from starting.	1349973
-----------------------------------------------------------------------------------------------------------------------------------------------------------------------------------------------------------------------------------------------	---------

Flow Collector Diagnostics were occasionally not displaying correctly.	-----
------------------------------------------------------------------------	-------

ExtremeControl Issues Addressed	ID
----------------------------------------	-----------

Applying a filter to an Extreme Management Center Access Control group was incorrectly applying the filter to all groups of the same type.	1364312
--------------------------------------------------------------------------------------------------------------------------------------------	---------

Searching for attributes in the LDAP Test window was returning accurate search results, but the Attribute Name on the User Search and Host Search tabs on the Access Control tab was incorrect.	01408240
------------------------------------------------------------------------------------------------------------------------------------------------------------------------------------------------------------------------------------	----------

Juniper EX ports and port-ranges could not be added to Access Control Location Groups.	01404485
----------------------------------------------------------------------------------------	----------

Policy Issues Addressed	ID
--------------------------------	-----------

	1223404
--	---------

This section presents the known issues addressed in Extreme Management Center 8.1.0.52:

Extreme Management Center Issues Addressed	ID
---------------------------------------------------	-----------

Editing and saving an existing Port Usage Details report was removing the list of report targets from the report.	-----
-------------------------------------------------------------------------------------------------------------------	-------

Selecting a FlexView for a device via the right-click menu in a Topology map was not opening the FlexView.	1398215
------------------------------------------------------------------------------------------------------------	---------

Scheduled tasks that failed to complete were preventing tasks that followed from running.	-----
-------------------------------------------------------------------------------------------	-------

ExtremeControl Issues Addressed	ID
----------------------------------------	-----------

Attempting to remove an entry that did not exist as a member of an end-system group was not producing an error message.	1212731
-------------------------------------------------------------------------------------------------------------------------	---------

Policy Issues Addressed	ID
--------------------------------	-----------

Enforcing a change to a device via the Enforce Preview window on the Policy tab was not indicating whether the change was supported on the device.	1223404
------------------------------------------------------------------------------------------------------------------------------------------------------------------	---------

Security and Vulnerability Testing

Security is something that is taken seriously by Extreme Networks. Our commitment to achieving and maintaining a strong security stance for our products enables our customers to have confidence in networking, software, and management infrastructure provided by the company.

The Software Quality Assurance team at Extreme Networks scans every Extreme Management Center release using the current versions of multiple anti-virus solutions, updated to include the latest virus signatures.

Additionally, all Extreme Networks products undergo rigorous security testing with best-of-breed industry standard scanners. Further, all product binary images are scanned with sophisticated anti-virus solutions for evidence of viruses and malware before the images are uploaded to customer-facing portals. Whenever issues are discovered by these scanners and anti-virus solutions, a well-defined triage process is engaged for remediation or mitigation of such findings. This enables Extreme Networks to engineer solutions that heighten the security of our products, and new releases are made available as necessary in order to address any discovered security vulnerabilities. This has several additional benefits in terms of helping customers maintain networks that are compliant under various regulatory or industry standards such as HIPAA, SoX, and PCI.

Extreme Networks also monitors industry security information data sources, such as CERT, the full-disclosure mailing list, and various authoritative CVE announcements for vulnerabilities that could potentially apply to our products. When such a vulnerability is found, we follow a process by which high severity vulnerabilities (such as the ShellShock bug in the bash shell from late 2014) are prioritized over lower severity vulnerabilities. The severity itself is derived from the Common Vulnerability Scoring System (CVSS) score which provides the most widely accepted measure for vulnerability severity. For applicable vulnerabilities, we provide feedback to CERT to keep them updated on the status of our findings.

Further, for many of our products that are based on a Linux engine image – Extreme Management Center and Extreme Access Control, for example – we harden the engines by ensuring that we do not start unnecessary services and we do not install unnecessary software. In addition, we apply security updates from the upstream Linux distribution.

Taken together, the security of Extreme Networks products is maintained and verified. For all inquiries about our security processes, contact [Global Technical Assistance Center \(GTAC\)](#).

System Requirements

IMPORTANT: Extreme Management Center version 8.1 only runs on a 64-bit engine image. Any Extreme Management Center or Extreme Access Control engine currently running a 32-bit OS image must be upgraded to the newer 64-bit image prior to upgrading to 8.1. Please contact Extreme Networks Support with any questions.

Wireless event collection is disabled by default in version 8.1 due to the increase in disk space usage required. To enable event collection, select **Enable Event Collection** on the **Administration > Options > Event Analyzer** tab.

Extreme Management Center Server and Client OS Requirements

These are the operating system requirements for both the Extreme Management Center server and remote Extreme Management Center client machines.

IMPORTANT: Only 64-bit operating systems are officially supported on the Extreme Management Center server. Any Extreme Management Center server currently running a 32-bit OS must be upgraded to a 64-bit OS.

	Operating System
Windows (qualified on the English version of the operating systems)	Windows Server® 2012 and 2012 R2 Windows Server® 2016 Windows® 7
Linux	Red Hat Enterprise Linux WS and ES v6 and v7 Ubuntu 14
Mac OS X® (remote Extreme Management Center client only)	El Capitan Sierra
VMware® (Extreme Management Center Virtual Engine)	VMware ESXi™ 6.0 server VMware ESXi™ 6.5 server vSphere (client only)™
Hyper-V (Extreme Management Center Virtual Engine)	Hyper-V Server 2012 R2 Hyper-V Server 2016

Extreme Management Center Server and Client Hardware Requirements

These are the hardware requirements for the Extreme Management Center server and Extreme Management Center client machines.

Extreme Management Center Server

	Small	Medium	Enterprise	Large Enterprise
Total CPUs	1	2	2	2
Total CPU Cores	8	16	16	16
Memory	16 GB	32 GB	64 GB	64 GB
Memory allocated to Java:				
-Xms	8 GB	12 GB	24 GB	24 GB
-Xmx	12 GB	18 GB	36 GB	36 GB
Disk Size	240 GB	480 GB	960 GB	1.92 TB
IOPS	200	200	10,000	10,000

Recommended scale based on server configuration:

Maximum APs	250	2,500	25,000	25,000
Maximum Wireless MUs	2,500	25,000	100,000	100,000
Maximum Managed Devices	100	1,000	10,000	10,000
ExtremeControl End-Systems	N/A	50,000	200,000	200,000
Statistics Retention (Days)	90	180	180	360
ExtremeAnalytics	No	Yes	Yes	Yes
MU Events	No	Yes	Yes	Yes

Extreme Management Center Client

	Requirements
CPU Speed	3.0 GHz Dual Core Processor
Memory	4 GB
Disk Size	300 MB (User's home directory requires 50 MB for file storage)
Java Runtime Environment (JRE) (Oracle Java only)	Version 8
Browser (Enable JavaScript and Cookies)	Microsoft Edge (version 41.16.199.10000.0 in compatibility mode) Internet Explorer (version 11 in compatibility mode) Mozilla Firefox (version 34 or later) Google Chrome (version 33.0 or later)

Virtual Engine Requirements

The Extreme Management Center, Extreme Access Control, and Extreme Application Analytics virtual engines must be deployed on a [VMWare or Hyper-V server](#) with a disk format of VHDX.

- The VMWare Extreme Management Center virtual engines are packaged in the .OVA file format (defined by VMware).

- The Hyper-V Extreme Management Center virtual engines are packaged in the .ZIP file format.

IMPORTANT: For ESX and Hyper-V servers configured with AMD processors, the Extreme Application Analytics virtual engine requires AMD processors with at least Bulldozer based Opterons.

Extreme Management Center Virtual Engine Requirements

	Small	Medium	Large
Total CPU Cores	8	16	16
Memory	16 GB	32 GB	64 GB
<u>Memory allocated to Java:</u>			
-Xms	8 GB	12 GB	24 GB
-Xmx	12 GB	18 GB	36 GB
Disk Size	240 GB	480 GB	960 GB
IOPS	200	200	10,000

Recommended scale based on server configuration:

Maximum APs	250	2,500	25,000
Maximum Wireless MUs	2,500	25,000	100,000
Maximum Managed Devices	100	1,000	10,000
Extreme Access Control End-Systems	N/A	50,000	200,000
Statistics Retention (Days)	90	180	180
Application Analytics	No	Yes	Yes
MU Events	No	Yes	Yes

Extreme Access Control Virtual Engine Requirements

	Small	Medium	Enterprise
Total CPU Cores	8	16	16
Memory	12 GB	16 GB	32 GB
Disk Size	40 GB	120 GB	120 GB
IOPS	200	200	200

Recommended scale based on server configuration:

ExtremeControl End-Systems	3,000	6,000	9,000/12,000 ¹
Authentication	Yes	Yes	Yes
Captive Portal	No	Yes	Yes/No ¹
Assessment	No	Yes	No

¹The Enterprise Extreme Access Control engine configuration supports two different scale options:

- Up to 9,000 end-systems if your network uses Captive Portal functionality.
- Up to 12,000 end-systems if your network does not use Captive Portal functionality.

Extreme Application Analytics Virtual Engine Requirements

	Small	Medium	Enterprise
Total CPU Cores	8	16	16
Memory	12 GB	32 GB	64 GB
Disk Size	40 GB	480 GB	960 GB
IOPS	200	10,000	10,000

Recommended scale based on server configuration:

Flows Per Minute	250,000	500,000	750,000
------------------	---------	---------	---------

IMPORTANT: The ESXi free license supports a maximum of 8 CPU cores, while the medium and enterprise Extreme Application Analytics virtual engine installation require 16 CPU cores. This is only available by purchasing a permanent license. To use the Extreme Application Analytics virtual engine with an ESXi free license, adjust the number of CPU cores to 8.

Ensure at least 4 GB of swap space is available for flow storage on the Extreme Application Analytics virtual engine or impaired functionality may occur. Use the `free` command to verify the amount of available RAM on your Linux system.

Extreme Access Control Agent OS Requirements

The table below outlines the supported operating systems for end-systems connecting to the network through an Extreme Networks ExtremeControl deployment that is implementing agent-based assessment. Additionally, the end-system must support the operating system disk space and memory requirements as provided by Microsoft® and Apple®.

	Operating System	Operating System Disk Space	Available/Real Memory
Windows*	Windows Vista	80 MB	40 MB (80 MB with Service Agent)
	Windows XP		
	Windows 2008		
	Windows 2003		
	Windows 7		
	Windows 8		
	Windows 8.1		
	Windows 10		
Mac OS X	Tiger	10 MB	120 MB
	Snow Leopard		
	Lion		
	Mountain Lion		
	Mavericks		
	Yosemite		
	El Capitan		
	Sierra		

***NOTE:** Certain assessment tests require the Windows Action Center (previously known as Windows Security Center), which is supported on Windows XP SP2+, Windows Vista, and Windows 7, Windows 8, and Windows 8.1 operating systems.

Extreme Access Control Agent support for Antivirus/Firewall products includes, but is not limited to, the following families of products:

- McAfee
- Norton
- Kaspersky
- Trend Micro
- Sophos

Extreme Access Control Agent operating system support for the above products includes the latest Windows/Mac OS X versions currently available at the time of product release. Not all features of all products may be supported. For additional information on specific issues, see Known Issues and Limitations.

ExtremeControl Supported End-System Browsers

The following table outlines the supported desktop and mobile end-system browsers connecting to the network through the Mobile Captive Portal of Extreme Networks ExtremeControl.

	Browser	Version
Desktop	Microsoft Edge	41 and later
	Microsoft Internet Explorer	11 and later
	Mozilla Firefox version 34 and later	34 and later
	Google Chrome version 33.0 and later	33.0 and later
Mobile	Internet Explorer Mobile	11 and later (Windows Phone)
	Microsoft Edge	All versions
	Microsoft Windows 10 Touch Screen Native (Surface Tablet)	N/A
	iOS Native	9 and later
	Android Chrome	4.0 and later
	Android Native	4.4 and later
	Dolphin	All versions
	Opera	All versions

NOTES: A native browser indicates the default, system-installed browser. Although this may be Chrome (Android), this also includes the default, system-controlled browser used for a device's Captive Network Detection. Typically, this is a non-configurable option for Wi-Fi Captive Network Detection, but default Android, Microsoft of iOS devices are tested for compatibility with the Mobile Captive Portal.

A mobile device can access the standard (non-mobile) version of the Captive Portal using any desktop-supported browsers available on a mobile device.

For other browsers, the Mobile Captive Portal requires the browser on the mobile device be compatible with Webkit or Sencha Touch.

To confirm compatibility with Webkit or Sencha Touch, open `http://<Access Control Engine IP>/mobile_screen_preview` using your mobile web browser.

- If the browser is compatible, the page displays properly.
- If the browser is not compatible with the Mobile Captive Portal, the following error appears:



Extreme Access Control Engine Version Requirements

For complete information on Access Control engine version requirements, see the [Upgrade Information](#) section of these Release Notes.

Extreme Access Control VPN Integration Requirements

This section lists the VPN concentrators supported for use in Extreme Access Control VPN deployment scenarios.

Supported Functionality: Authentication and Authorization (policy enforcement)

Cisco ASA

Enterasys XSR

Supported Functionality: Authentication

Juniper SA (requires an S-Series Stand Alone (SSA) system in order to provide access control)

NOTE: For all Extreme Access Control VPN Deployment scenarios, an S-Series Stand Alone (SSA) system is required to change authorization levels beyond the initial authorization, for example, when using assessment.

Extreme Access Control SMS Gateway Requirements

The following SMS Gateways have been tested for interoperability with Extreme Access Control:

- Clickatell
- Mobile Pronto

Other SMS Gateways that support the SMTP API should be able to interoperate with Extreme Access Control, but have not been officially tested.

Extreme Access Control SMS Text Messaging Requirements

The following mobile service providers are supported by default for SMS text messaging in an Extreme Access Control deployment. Additional service providers can be added:

AT&T	SunCom
Alltel	T-Mobile
Bell Mobility (Canada)	US Cellular
Cingular	Verizon
Metro PCS	Virgin Mobile (Canada)
Rogers (Canada)	Virgin Mobile
Sprint PCS	

Ekahau Maps Requirements

Extreme Management Center supports importing Ekahau version 8.x maps in .ZIP format.

Installation Information

When you purchased Extreme Management Center, you received a Licensed Product Entitlement ID that allows you to generate a product license key. Prior to installing Extreme Management Center, redeem your Entitlement ID for a license key. Refer to the instructions included with the Entitlement ID sent to you.

For complete installation instructions, refer to the installation documentation located on the Extreme Management Center (NetSight) (NMS) Documentation web page: <http://extranet.extremenetworks.com/downloads/Pages/NMS.aspx>.

IMPORTANT: The NetSight Server service may not start after installing Extreme Management Center version 8.0 on a system on which a Windows Server operating system is installed. Restarting Windows corrects this issue.

The **Governance** tab is available and supported by Extreme on an Extreme Management Center engine running the Linux operating system supplied by Extreme. Other Linux operating systems can support Governance functionality, but python version 2.6 or higher must be installed. Additionally Governance functionality requires the git, python2, python mysql module, python setuptools module, and python "pygtail" module packages be installed and related dependencies managed by the customer for their server's unique operating system and version.

Important Installation Considerations

Custom FlexViews

When re-installing Extreme Management Center Console, the installation program saves copies of any FlexViews you created or modified in the *<install directory>*

`\.installer\backup\current\appdata\System\FlexViews` folder.

If you are deploying FlexViews via the Extreme Management Center server, they are saved in the `appdata\VendorProfiles\Stage\MyVendorProfile\FlexViews\` folder.

Custom MIBs and Images

If you are deploying MIBs via the Extreme Management Center server, they are saved in the `appdata\VendorProfiles\Stage\MyVendorProfile\MIBs\` folder.

If you are deploying device images (pictures) via the Extreme Management Center server, they are saved in the `appdata\VendorProfiles\Stage\MyVendorProfile\Images\` folder.

Evaluation License

If you have requested a Extreme Management Center evaluation license, you received an Entitlement ID. This Entitlement ID allows you to generate a product evaluation license key. Refer to the instructions included with the Entitlement ID to generate the license key. Use the key when you install the product.

Evaluation licenses are valid for 30 days. To upgrade from an evaluation license to a purchased copy, contact your Extreme Networks Representative to purchase the software. Refer to the Upgrading an Evaluation License section of the *Extreme Management Center Installation Guide* for instructions on upgrading your evaluation license.

Upgrade Information

Extreme Management Center 8.1 supports upgrades from Extreme Management Center version 8.0 only. If you are upgrading from a NetSight/Extreme Management Center version prior to 8.0, you must perform an intermediate

upgrade. For example, if you are upgrading from Extreme Management Center 7.0, you must first upgrade to Extreme Management Center 7.1.3, then to version 8.0, and then upgrade to Extreme Management Center 8.1.

IMPORTANT: When performing an upgrade, be sure to back up the database prior to performing the upgrade, and save it to a safe location. Use the **Administration > Backup/Restore** tab to perform the backup.

The NetSight Server service may not start after upgrading Extreme Management Center to version 8.0 on a system on which the Windows Server 2008 operating system is installed. Restarting Windows corrects this issue.

When upgrading the Application Analytics engines to version 8.1 after upgrading from version 6.1 to 7.1.3, the upgrade does not complete successfully. To successfully upgrade the engine to version 8.1 after upgrading from version 6.1 to 7.1.3, enter `dpkg --purge postgresql*` in the command line, then upgrade the Application Analytics engine to version 8.1.

Important Upgrade Considerations

- When upgrading the Extreme Management Center server, Application Analytics engine, or Extreme Access Control engine to version 8.1, ensure the DNS server IP address is correctly configured. Additionally, upgrading requires an internet connection. If no internet connection is available, see Migrating or Upgrading to a 64-bit Extreme Management Center Engine.

IMPORTANT: If a network proxy is required to access the internet, perform the following steps:

1. Enter one of the following commands, depending on your configuration:
 - `export http_proxy=http://yourproxyaddress:proxyport` if a username and password are not required.
 - `export http_proxy=http://username:password@yourproxyaddress:proxyport` if a username and password are required.
 2. Run the binary upgrade for the engine.
-

- If your network is using Extreme Application Analytics engines, you must first perform the Extreme Management Center upgrade to version 8.1 and then add the Extreme Application Analytics engines.
- If you are running Data Center Manager (DCM), a Mobile Device Management (MDM) integration, or other ExtremeConnect or Fusion integration with Extreme Management Center, or are accessing Web Services directly or through ExtremeConnect, you need to install a Extreme Management Center Advanced (NMS-ADV) license. Contact your account team for information on obtaining this license.
- When upgrading a 64-bit Extreme Management Center server or when upgrading from a 32-bit to a 64-bit Extreme Management Center server, if the `-Xmx` setting is set below 1536m, it increases to 1536m.
- When upgrading to Extreme Management Center version 8.1, ensure the `-Xms` and `-Xmx` settings in the `nserver.cfg` file are set to the values defined in the [Requirements table](#) and then restart the server:
 - On a server running a Linux operating system, enter `service nserver restart` in the command line to restart the server.
 - On a server running a Windows operating system, right-click the **NetSight Services Manager** icon in the notification area of the task bar and select **NetSightServer > Restart Server** to restart the server.

NOTE: The `nserver.cfg` file is located in the `<install directory>\NetSight\services` folder.

Custom FlexViews

If you are deploying FlexViews via the Extreme Management Center server, they are saved in the `appdata\VendorProfiles\Stage\MyVendorProfile\FlexViews\` folder.

Custom MIBs and Images

If you are deploying MIBs via the Extreme Management Center server, they are saved in the `appdata\VendorProfiles\Stage\MyVendorProfile\MIBs\` folder.

If you are deploying device images (pictures) via the Extreme Management Center server, they are saved in the `appdata\VendorProfiles\Stage\MyVendorProfile\Images\` folder.

Upgrade Considerations for NAC Manager 8.1

General Upgrade Information

When upgrading to Extreme Management Center NAC Manager 8.1, you are required to upgrade your Extreme Access Control engine version to 8.0 or 8.1. Additionally, both Extreme Management Center NAC Manager and the Extreme Access Control engine must be at version 8.1 in order to take advantage of the new Extreme Access Control 8.1 features.

NOTE: Extreme Access Control 8.1 is not supported on the 2S Series and 7S Series Extreme Access Control Controllers.

You can download the latest Extreme Access Control engine version at the Extreme Management Center (NetSight) (NMS) Download web page <http://extranet.extremenetworks.com/downloads/Pages/NMS.aspx>. Be sure to read through the *Upgrading to Extreme Access Control 8.1* document (available on the Extreme Management Center (NetSight) Documentation web page > Manuals & Release Notes > NetSight 8.1 > Network Access Control [NAC]) for important information.

In addition, if your ExtremeControl solution utilizes a Nessus assessment server, upgrade your assessment agent adapter to version 8.1 if you upgrade to the Extreme Access Control engine 8.1. Version 8.1 of the assessment agent adapter requires an operating system with a 64-bit architecture.

ExtremeWireless Upgrade Information

1. Clients and Client Events from ExtremeWireless controllers on which version 10.31 or later is installed are not displayed in the **Wireless > Clients** and **Client Events** tables. This is a known limitation and will be corrected in a future release.
2. Enter the following set of commands in WLC mode of the CLI to enable Extreme Management Center ciphers compatible with version 8.1:
 - secureconnection
 - weak-ciphers enable
 - message-bus-ciphers RC4-MD5 0
 - apply

Upgrade Considerations for Wireless Manager 8.1

Following a Wireless Manager upgrade, clear the Java Cache before starting the Extreme Management Center client.

Configuration Considerations

Firewall Considerations

- Port 8080 (Default HTTP traffic) must be accessible through firewalls for users to install and launch Extreme Management Center client applications.
- Port 8443 (Default HTTPS traffic) must be accessible through firewalls for clients to access the Extreme Management Center Server Administration web pages, Extreme Management Center, and Extreme Access Control Dashboard.
- Port 8444 (Default HTTPS traffic) must be accessible through firewalls for clients to access the Extreme Access Control Engine Administration web pages.
- The following port must be accessible through firewalls for the Extreme Management Center Server and an Extreme Access Control Assessment Server to communicate:
TCP: 8445
- The following ports must be accessible through firewalls for the Extreme Management Center Server and an Extreme Access Control engine to communicate:
Required Ports (all bi-directionally)
TCP: 4589, 8080, 8443, 8444
UDP: 161, 162
- The following port must be accessible through firewalls for Extreme Access Control engine to Extreme Access Control engine communication:
TCP: 8444
- The following ports must be accessible through firewalls for Extreme Access Control engine-to-Extreme Access Control engine communication in order for assessment agent mobility to function properly:
TCP: 8080, 8443
- The following ports must be accessible through firewalls from every end-system subnet subject to the Extreme Access Control assessment agent to every Extreme Access Control engine in order to support agent mobility:
TCP: 8080, 8443
- The following ports must be accessible through firewalls for the Extreme Management Center Server and Wireless Controllers to communicate:
SSH: 22
SNMP: 161, 162
Langley: 20506

- The following port must be accessible through firewalls for Assessment Agent updates:
TCP: 80 from Extreme Management Center to internet.
- The following ports must be accessible through firewalls for Extreme Management Center firmware updates:
TCP: 443 from Extreme Management Center to internet
- The following ports must be accessible through firewalls for the Extreme Management Center Server and WAS to communicate:
TCP: Port 8443 — Used by WAS to authenticate Extreme Management Center users. This port corresponds to Extreme Management Center's HTTPs Web Server port.
TCP: Port 443 — Import data from Extreme Management Center into WAS.
TCP: Port 8080 — Upgrade WAS from WAS UI.
- The following ports must be accessible (bi-directionally) through firewalls for the Extreme Management Center Server and an Extreme Application Analytics engine to communicate:
TCP: Ports 4589, 8080, 8443
UDP: Ports 161, 162
To Extreme Application Analytics engine:
UDP: Port 2055 (NetFlow)
TCP: 22, 8443

For GRE Tunnels to the Extreme Application Analytics engine IP Protocol 47
- Port 2055 must be accessible through firewalls for the Extreme Management Center Server to receive NetFlow data.

Supported MIBs

The following directory contains the IETF and Private Enterprise MIBs supported by Extreme Management Center applications:

```
<install directory>\appdata\System\mibs directory
```

Navigate to the directory and open the .index file to view an index of the supported MIBs.

Additional MIB Support information is available at www.extremenetworks.com/support/policies.

Important URLs

The following URLs provide access to Extreme Management Center software products and product information:

- For information on product licensing, visit <https://extranet.extremenetworks.com/Pages/default.aspx>.
- To download the latest Extreme Management Center software products, visit the Extreme Management Center (NetSight) (NMS) web page: <http://extranet.extremenetworks.com/downloads/Pages/NMS.aspx>.
- To download previously released Extreme Management Center products, visit the Extreme Management Center (NetSight) (NMS) web page: <http://extranet.extremenetworks.com/downloads/Pages/NMS.aspx>.
- To register any Extreme Management Center products that are covered under a service contract, use the Service Contracts Management System at <https://extranet.extremenetworks.com/Pages/default.aspx>.

Getting Help

If you require assistance, contact Extreme Networks using one of the following methods.

- [Global Technical Assistance Center \(GTAC\) for Immediate Support](#)
 - **Phone:** 1-800-998-2408 (toll-free in U.S. and Canada) or 1-603-952-5000. For the Extreme Networks support phone number in your country, visit: www.extremenetworks.com/support/contact
 - **Email:** support@extremenetworks.com. To expedite your message, enter the product name or model number in the subject line.
- [GTAC Knowledge](#) — Get on-demand and tested resolutions from the GTAC Knowledgebase, or create a help case if you need more guidance.
- [The Hub](#) — A forum for Extreme customers to connect with one another, get questions answered, share ideas and feedback, and get problems solved. This community is monitored by Extreme Networks employees, but is not intended to replace specific guidance from GTAC.
- [Support Portal](#) — Manage cases, downloads, service contracts, product licensing, and training and certifications.

Before contacting Extreme Networks for technical support, have the following information ready:

- Your Extreme Networks service contract number and/or serial numbers for all involved Extreme Networks products
- A description of the failure
- A description of any action(s) already taken to resolve the problem
- A description of your network environment (such as layout, cable type, other relevant environmental information)
- Network load at the time of trouble (if known)
- The device history (for example, if you have returned the device before, or if this is a recurring problem)
- Any related Return Material Authorization (RMA) numbers



What's New in Extreme Management Center Version 8.1

This document provides an overview of the new features in Extreme Management Center version 8.1. For additional information about each of the features listed in this guide, refer to the documentation posted online at ExtremeNetworks.com or the help system included with the software.

New Features included in Extreme Management Center 8.1

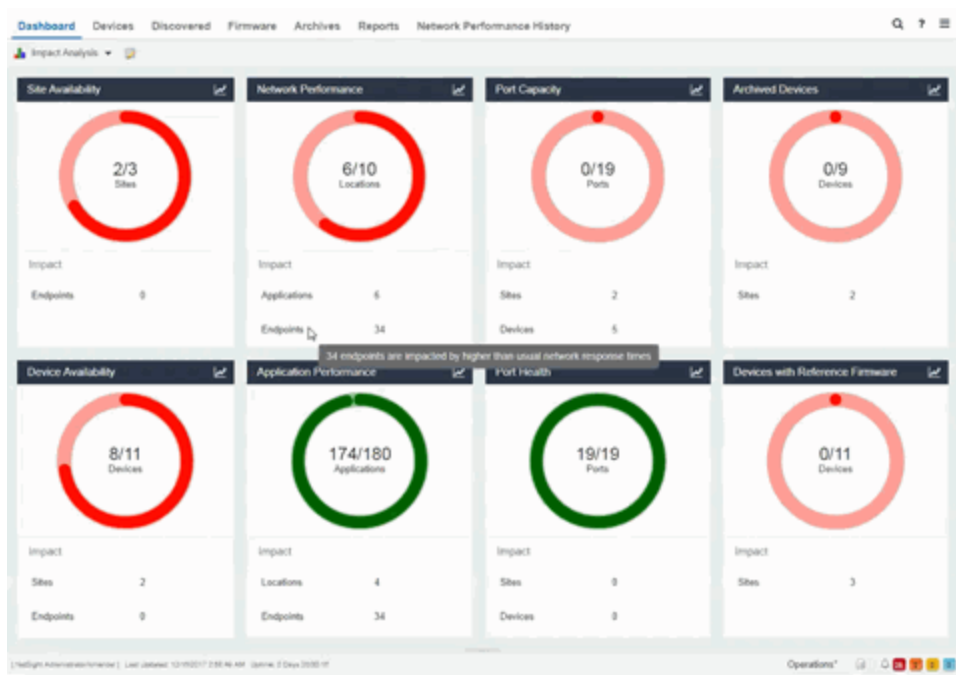
Some of the features added in this version of Extreme Management Center include:

Extreme Management Center

- [Introducing the Impact Analysis Dashboard](#)
- [Enhancement to SysLog](#)
- [Additional Information Included in PortViews](#)
- [Added Support for Additional Device Types](#)
- [Additional FlexViews Available](#)
- [Enhancement to Report Dashboard Layout](#)
- [Events Enhancement](#)

Introducing the Impact Analysis Dashboard

The Impact Analysis dashboard (available on the **Network** tab) displays a real-time summary of Availability, Performance, Capacity/Health, and Configuration data for your network. The criteria for each chart is configurable and clicking each chart opens a report displaying details about the impacted elements.



Enhancement to SysLog

Extreme Management Center now supports the ability to specify a non-standard UDP port for syslog alarm actions.

Additional Information Included in PortViews

Extreme Management Center now displays the **Port by Name (Alias)** for all Extreme devices in Interface Details included in a PortView.

Added Support for Additional Device Types

Extreme Management Center now supports the following device types:

- BOSS
- VOSS
- SLX
- WLAN-9100

Additional FlexViews Available

FlexViews for BOSS and VOSS devices are now available in Extreme Management Center.

Enhancement to Response Dashboard Layout

In Extreme Management Center 8.1, you can customize your Reports dashboard layout design by dragging and dropping components onto the report grid in Report Designer. Once in place, the components provide a live preview of the reports you chose.

Events Enhancement

A **Source** column is added to the **Events** tab in Extreme Management Center, where you can view the hostname of the device from which an event originated.

The screenshot shows the 'Events' tab in the Extreme Management Center interface. The table displays various event entries with columns for Severity, Event Type, Category, Timestamp, Source, and Subcomponent. A red box highlights the 'Source' column, which contains entries like 'Shannon' and several greyed-out fields.

Severity	Event Type	Category	Timestamp ↓	Source	Subcomp
●	Wireless	EWC	12/1/2017 9:58:33 AM		
●	Wireless	EWC	12/1/2017 9:58:31 AM		
●	Admin	User Connection	12/1/2017 9:57:53 AM	---	
●	Admin	User Connection	12/1/2017 9:57:53 AM	---	
●	Wireless	EWC	12/1/2017 9:57:34 AM		
●	Wireless	EWC	12/1/2017 9:57:04 AM		
●	Wireless	EWC	12/1/2017 9:55:47 AM		
●	Application Analytics	Dynamic Threshold	12/1/2017 9:55:05 AM	Shannon	
●	Wireless	EWC	12/1/2017 9:54:46 AM		
●	Wireless	EWC	12/1/2017 9:54:27 AM		
●	Wireless	EWC	12/1/2017 9:54:23 AM		
●	Wireless	EWC	12/1/2017 9:54:17 AM		
●	Wireless	EWC	12/1/2017 9:53:29 AM		
●	Wireless	EWC	12/1/2017 9:52:46 AM		

ExtremeControl

- [Improvement to Captive Portal Usability](#)
- [Enhancements to Guest Registration](#)
- [ExtremeControl Usability Improvements](#)

Improvement to Captive Portal Usability

The Acceptable Use Policy is now hidden by default on the mobile captive portal and can be displayed by clicking the **AUP** button.

Enhancements to Guest Registration

The Guest Registration portal now allows users to log into their Yahoo or Salesforce account to complete the guest registration process. Additionally, you can also create a generic guest registration portal using OpenID Connect.

Guest Registration

Introduction Message: [Edit...](#)

Customize Fields: [Open Editor...](#)

Redirection

Redirection:

Registration Settings

Verification Method:

Default Expiration: (0 = never)

Facebook Registration

Google Registration

Microsoft Registration

Yahoo Registration

Salesforce Registration








Provider 1 Registration

Provider 2 Registration

Sponsorship

End users will be assigned to the Registered Guests group by default. With optional sponsorship, a sponsor can elevate their access. If sponsorship is required, the end user has no access until the sponsor approves.

Sponsorship Mode:

<p>Network Login</p> <p>If you have been issued credentials for this network, please login below.</p> <p>*User Name: <input type="text"/></p> <p>*Password: <input type="password"/></p> <p>Login</p>	<p>Register as a Guest</p> <p>If you have not been issued credentials for this network, please register your device.</p> <p>Register</p> <p> Sign in with Facebook</p> <p> Sign in with Google</p> <p> Sign in with Microsoft</p> <p> Sign in with Yahoo</p> <p> Sign in with Salesforce</p> <p> Provider 1</p> <p> Provider 2</p>
------------------------------------------------------------------------------------------------------------------------------------------------------------------------------------------------------------------------------	--------------------------------------------------------------------------------------------------------------------------------------------------------------------------------------------------------------------------------------------------------------------------------------------------------------------------------------------------------------------------------------------------------------------------------------------------------------------------------------------------------------------------------------------------------------------------------------------------------------------------------------------------------------------------------------------------------------------------------------------------------------------------------------------------------------------------------------------------------------------------------------------------------------------------------------------------------------------------------------------------------------------------------------------------------------------------------

ExtremeControl Usability Improvements

The **Access Control** tab now includes the following usability improvements:

- Ability to configure Access Control engine settings at the engine group level, which configures all of the engines in the group
- New default Access Control rules

ExtremeAnalytics

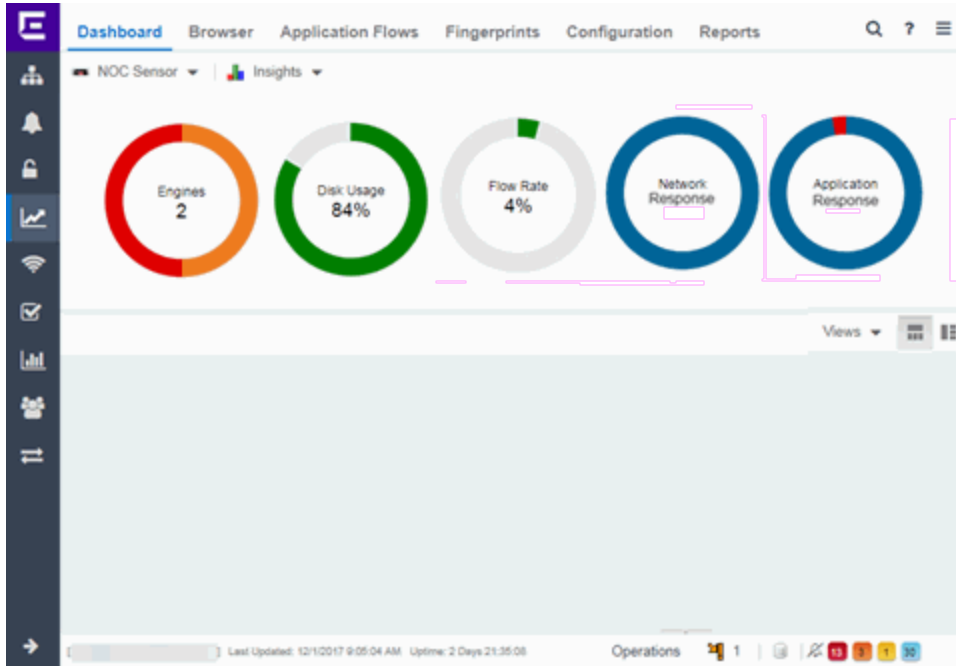
- [Ability to Collect Flow Information on ExtremeXOS Devices](#)
- [New Insights Dashboard](#)
- [New ExtremeAnalytics Reports](#)
- [Application Flows Performance Improvement](#)
- [New Application Telemetry Device Configuration](#)

Ability to Collect Flow Information on ExtremeXOS Devices

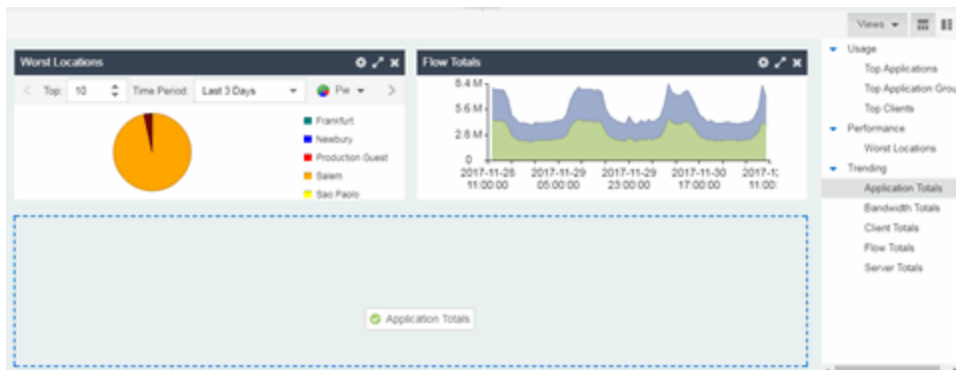
Via Application Telemetry, ExtremeAnalytics now allows you to use your ExtremeXOS devices as flow collectors.

New Insights Dashboard

The **Analytics** tab includes a new Insights Dashboard, available from the **Dashboard** drop-down menu. The Insights Dashboard features ring charts that display real-time network and application usage and service data.

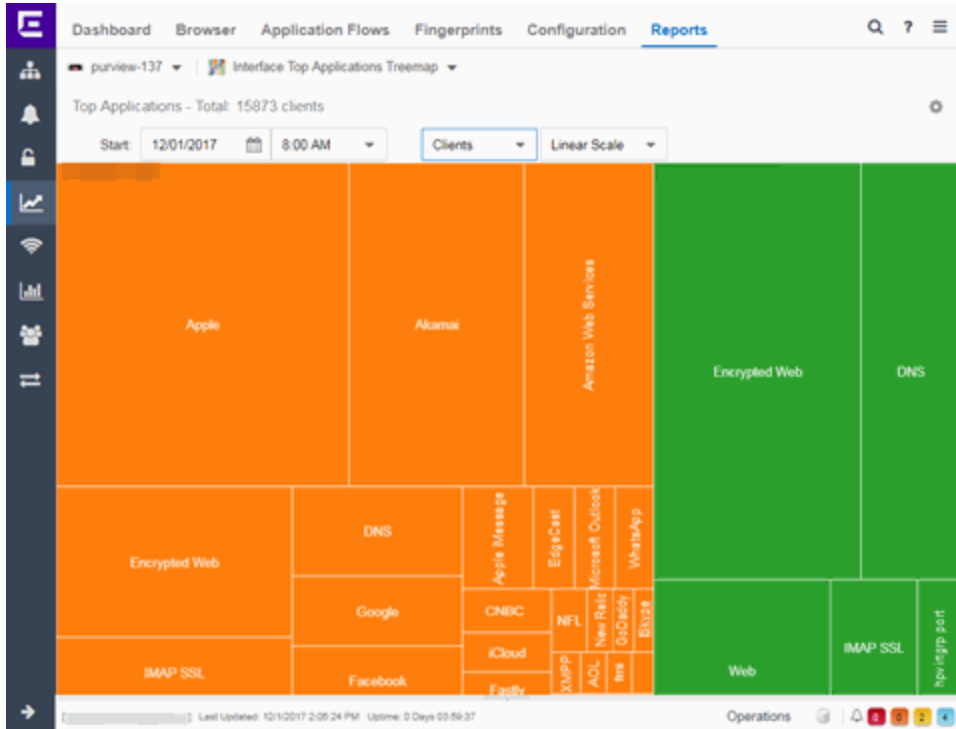


Additionally, a **Views** menu allows you to drag and drop graphs and charts into the Dashboard to provide more in-depth information about your network.



New ExtremeAnalytics Reports

The Interface Top Applications Treemap, Top Clients by Interface, and Top Interfaces by Application ExtremeAnalytics reports are now available via the **Analytics** tab.



The screenshot shows the 'Reports' section of the Extreme Management Center interface, specifically the 'Top Clients by Interface' view. The table displays performance metrics for various clients across different network interfaces. The columns include Switch, In..., Client, Extrapol Tx Extra..., Rx Extr..., Flow Re..., Flow Rec..., Flow Re..., Se..., Appl..., Application Res..., and Network Res... The data is presented in a grid format with color-coded bars for the Application Res... and Network Res... columns. The interface includes a sidebar with navigation icons, a top navigation bar with 'Dashboard', 'Browser', 'Application Flows', 'Fingerprints', 'Configuration', and 'Reports', and a search bar. The bottom status bar shows 'Last Updated: 12/01/2017 6:47:25 PM' and 'Uptime: 0 Days 07:40:36'.

Switch	In...	In...	Client	Extrapol Tx Extra...	Rx Extr...	Flow Re...	Flow Rec...	Flow Re...	Se...	Appl...	Application Res...	Network Reso...
0	0	0		0	0	5	5	0	0	0		
0	0	0		0	0	13	13	0	0	0		
0	0	0		0	0	15	0	15	0	0		
0	0	0		0	0	3	0	3	0	0		
0	0	0		0	0	73	73	0	0	0		
0	0	0		0	0	123	123	0	0	0		
0	0	0		0	0	644	644	0	0	0		
0	0	0		0	0	2	0	2	0	0		
0	0	0		0	0	2	2	0	0	0		
0	0	0		0	0	2	2	0	0	0		
0	0	0		0	0	2	0	2	0	0		
0	0	0		0	0	2	0	2	0	0		

Application Flows Performance Improvement

In version 8.1 the performance of the ExtremeAnalytics Application Flows tab is improved.

Ability to Configure Devices to Display Application Telemetry and SFlow Paths

Extreme XOS devices now support Application Telemetry flow collection. With this update, you can configure devices to use application telemetry sources and Sflow paths in addition to Netflow data.

Policy

Enhancement to Enforce Preview

The **Enforce Preview** window now indicates when devices do not have the minimum firmware version required to support a new feature for that platform.

ExtremeConnect

- [ExtremeConnect Enhancements](#)

ExtremeConnect Enhancements

ExtremeConnect allows you to integrate with Amazon Web Services, Microsoft InTune MDM, Google GSuite, and Aruba Clearpass via new modules on the **Connect** tab.

Information Governance Engine

Your version of IGE is automatically upgraded when installing Extreme Management Center 8.1. The new version provides you with the GDPR (General Data Protection Regulation) regime, new audit tests, and support for 200-Series, BOSS, and VOSS devices. Regimes and audit tests you create in version 8.0 are retained following the upgrade.

- [Ability to Test Additional Device Types](#)
- [Added Additional Regime](#)

Ability to Test Additional Device Types

Version 8.1 adds support for WiNG wireless devices in IGE. You can now test your WiNG wireless devices using audit tests in the PCI, HIPPA and GDPR compliances, which evaluate your devices for a Wireless Intrusion Prevention

System, firewall and management policy for security measures. These tests are designed to monitor the network for threats, penetrations, and intrusions.

Additionally, version 8.1 adds support for E-200 Series devices. Audit Tests in the PCI, HIPAA, and GDPR regimes for E-200 Series devices provide you with the ability to adopt a stronger security policy, helping you prevent a wide range of attacks and provide protection from threats, penetrations, and intrusions.

Added Additional Regime

Via the **Governance** tab, you can now test whether your devices are compliant with the GDPR (General Data Protection Regulation) industry standard. The regime includes new audit tests focused on evaluating the configuration of your devices against the standard.

StackStorm (ST2) Integration into Extreme Management Center

StackStorm (ST2) is an event-driven automation program that you can now use via Extreme Management Center for facilitated troubleshooting, auto-remediation, security responses, complex deployments, and more. ST2 allows you to process Trap, Alarm, or Syslog messages directly from the Extreme Management Center.

1/2018

P/N: 9035219-01

Subject to Change Without Notice