



Extreme Tunnel Concentrator Release Notes

Version 24.04

9038929-00 Rev. AA
May 2024



Copyright © 2024 Extreme Networks, Inc. All rights reserved.

Legal Notice

Extreme Networks, Inc. reserves the right to make changes in specifications and other information contained in this document and its website without prior notice. The reader should in all cases consult representatives of Extreme Networks to determine whether any such changes have been made.

The hardware, firmware, software or any specifications described or referred to in this document are subject to change without notice.

Trademarks

Extreme Networks and the Extreme Networks logo are trademarks or registered trademarks of Extreme Networks, Inc. in the United States and/or other countries.

All other names (including any product names) mentioned in this document are the property of their respective owners and may be trademarks or registered trademarks of their respective companies/owners.

For additional information on Extreme Networks trademarks, see: <https://www.extremenetworks.com/about-extreme-networks/company/legal/trademarks>

Open Source Declarations

Some software files have been licensed under certain open source or third-party licenses.

End-user license agreements and open source declarations can be found at: <https://www.extremenetworks.com/support/policies/open-source-declaration/>

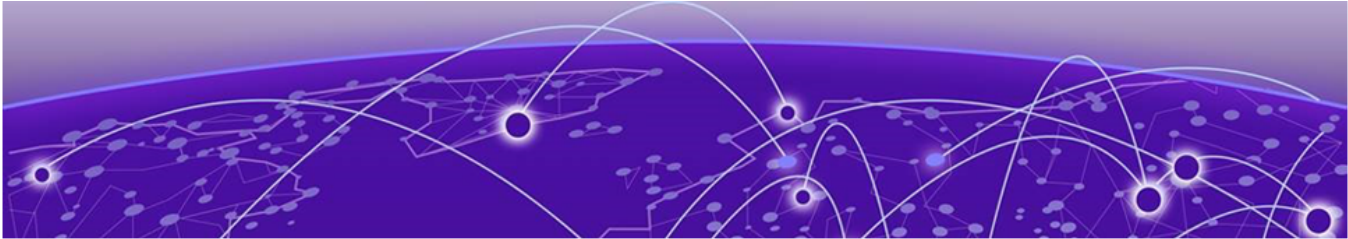


Table of Contents

Release Notes.....	4
Features in 24.04.....	4
Known Issues.....	5
Documentation.....	5
Help and Support.....	6
Subscribe to Product Announcements.....	6



Release Notes

[Features in 24.04](#) on page 4

[Known Issues](#) on page 5

[Documentation](#) on page 5

[Help and Support](#) on page 6

Extreme Tunnel Concentrator runs as a container application on the Extreme Universal Compute Platform. The Extreme Tunnel Concentrator solution lets you configure Generic Routing Encapsulation (GRE) tunneling that directs wireless traffic from your access points to your traffic data center, where the traffic can be aggregated and processed.

Features in 24.04

This release contains the following features:

Syslog Configuration on Tunnel Concentrator

Administrators can now configure settings for system log and syslog reporting from the Tunnel Concentrator user interface. For syslog reporting, administrators can assign up to three syslog servers. For configuration information, see the [Extreme Tunnel Concentrator Deployment Guide](#).

Improved Tunnel Statistics on Tunnel Concentrator

The tunnel view on the Tunnel Concentrator user interface has been updated with improved statistics. The view of tunnels now includes the number of packets sent and the number of packets received over the interface.

ARP Responder

Tunnel Concentrator supports ARP Responder functionality by default. With this update, Tunnel Concentrator now stores its own ARP lookup table and can proxy and respond to ARP requests. No configuration is required to enable the feature.

To update its ARP table, Tunnel Concentrator uses the following logic:

- Tunnel Concentrator stores IP address - MAC address mappings that it learns from DHCP packets, or from the source IP address of packets that ingress over a GRE tunnel.
- Tunnel Concentrator does not store mappings that it learns from the bridged portion of the network.

To respond to ARP requests, Tunnel Concentrator does a lookup of its local ARP table for a MAC address that maps to the target IP address from the ARP request and responds as per these rules:

- If the ARP lookup succeeds, Tunnel Concentrator returns an ARP response to the sender directly with the correct MAC address.
- If the ARP lookup fails, Tunnel Concentrator forwards the ARP broadcast to the bridged network. Tunnel Concentrator does not forward ARP broadcasts to GRE tunnels.

Statistics Collection for ExtremeCloud IQ

Performance improvements for statistics collection when you integrate with ExtremeCloud IQ.

Known Issues

Version 24.04 of Tunnel Concentrator has the following known issues:

Table 1: Known Issues in 24.04

Issue	Description
IQVPN-206	When untagged VLAN is used as a listening interface with VRRP, the listening interface becomes un-responsive after 30-45 minutes.
IQVPN-210	Tunnel Concentrator drops packets at ~ 50s intervals while the Tunnel Concentrator dashboard is accessed or viewed

Documentation

Refer to the following documents for information on how to install, configure, and maintain the Tunnel Concentrator application:

Tunnel Concentrator Documents

- [Extreme Tunnel Concentrator Deployment Guide](#)—Contains information on how to install, configure, and maintain Tunnel Concentrator on Universal Compute Platform.

Related Extreme Networks Documents

- [ExtremeCloud Edge - Self-Orchestration Deployment Guide for Universal Compute Platform](#)—An ExtremeCloud Edge deployment on 4120C hardware is a mandatory prerequisite for installing the Tunnel Concentrator application. Refer to this guide for deployment information.
- [ExtremeCloud IQ Controller User Guide](#)—If you are deploying ExtremeCloud IQ Controller as the management application for Tunnel Concentrator, refer to this guide for ExtremeCloud IQ Controller information.
- [ExtremeCloud IQ User Guide](#)—If you are deploying ExtremeCloud IQ as the management application for Tunnel Concentrator, refer to this guide for ExtremeCloud IQ information.

Help and Support

If you require assistance, contact Extreme Networks using one of the following methods:

Extreme Portal

Search the GTAC (Global Technical Assistance Center) knowledge base; manage support cases and service contracts; download software; and obtain product licensing, training, and certifications.

The Hub

A forum for Extreme Networks customers to connect with one another, answer questions, and share ideas and feedback. This community is monitored by Extreme Networks employees, but is not intended to replace specific guidance from GTAC.

Call GTAC

For immediate support: (800) 998 2408 (toll-free in U.S. and Canada) or 1 (408) 579 2800. For the support phone number in your country, visit www.extremenetworks.com/support/contact.

Before contacting Extreme Networks for technical support, have the following information ready:

- Your Extreme Networks service contract number, or serial numbers for all involved Extreme Networks products
- A description of the failure
- A description of any actions already taken to resolve the problem
- A description of your network environment (such as layout, cable type, other relevant environmental information)
- Network load at the time of trouble (if known)
- The device history (for example, if you have returned the device before, or if this is a recurring problem)
- Any related RMA (Return Material Authorization) numbers

Subscribe to Product Announcements

You can subscribe to email notifications for product and software release announcements, Field Notices, and Vulnerability Notices.

1. Go to [The Hub](#).
2. In the list of categories, expand the **Product Announcements** list.
3. Select a product for which you would like to receive notifications.
4. Select **Subscribe**.
5. To select additional products, return to the **Product Announcements** list and repeat steps 3 and 4.

You can modify your product selections or unsubscribe at any time.