



ExtremeCloud™ Universal Zero Trust Network Access Release Notes

for Version 24.1.0

9038016-00 Rev AA
May 2024



Copyright © 2024 All rights reserved.

Legal Notice

Extreme Networks, Inc. reserves the right to make changes in specifications and other information contained in this document and its website without prior notice. The reader should in all cases consult representatives of Extreme Networks to determine whether any such changes have been made.

The hardware, firmware, software or any specifications described or referred to in this document are subject to change without notice.

Trademarks

Extreme Networks and the Extreme Networks logo are trademarks or registered trademarks of Extreme Networks, Inc. in the United States and/or other countries.

All other names (including any product names) mentioned in this document are the property of their respective owners and may be trademarks or registered trademarks of their respective companies/owners.

For additional information on Extreme Networks trademarks, see: <https://www.extremenetworks.com/about-extreme-networks/company/legal/trademarks>

Open Source Declarations

Some software files have been licensed under certain open source or third-party licenses.

End-user license agreements and open source declarations can be found at: <https://www.extremenetworks.com/support/policies/open-source-declaration/>



Table of Contents

Preface.....	4
Conventions.....	4
Text Conventions.....	4
Platform-Dependent Conventions.....	6
Terminology.....	6
Send Feedback.....	6
Help and Support.....	7
Subscribe to Product Announcements.....	7
UZTNA General Release Information.....	8
Overview.....	8
Switch Onboarding Options.....	8
Device Support Information.....	9
Access Points.....	9
Universal Hardware.....	9
(Cloud Native).....	10
.....	11
Extreme Wireless.....	12
Switches.....	13
Universal Hardware.....	13
ExtremeXOS.....	19
VOSS.....	23
(Cloud Native).....	24
Dell EMC.....	25
Supported Browsers and Display Settings.....	26
Desktop and Mobile Browser Support.....	26
Display Settings.....	26
Open Issues in 24.1.0.....	27



Preface

Read the following topics to learn about:

- The meanings of text formats used in this document.
- Where you can find additional information and help.
- How to reach us with questions and comments.

Conventions

To help you better understand the information presented in this guide, the following topics describe the formatting conventions used for notes, text, and other elements.

Text Conventions

Unless otherwise noted, information in this document applies to all supported environments for the products in question. Exceptions, like command keywords associated with a specific software version, are identified in the text.

When a feature, function, or operation pertains to a specific hardware product, the product name is used. When features, functions, and operations are the same across an entire product family, such as Extreme Networks switches or SLX routers, the product is referred to as *the switch* or *the router*.

Table 1: Notes and warnings




Icon	Notice type	Alerts you to...
	Tip	Helpful tips and notices for using the product
	Note	Useful information or instructions
	Important	Important features or instructions

Table 1: Notes and warnings (continued)



Icon	Notice type	Alerts you to...
	Caution	Risk of personal injury, system damage, or loss of data
	Warning	Risk of severe personal injury

Table 2: Text

Convention	Description
screen displays	This typeface indicates command syntax, or represents information as it is displayed on the screen.
The words <i>enter</i> and <i>type</i>	When you see the word <i>enter</i> in this guide, you must type something, and then press the Return or Enter key. Do not press the Return or Enter key when an instruction simply says <i>type</i> .
Key names	Key names are written in boldface, for example Ctrl or Esc . If you must press two or more keys simultaneously, the key names are linked with a plus sign (+). Example: Press Ctrl+Alt+Del
<i>Words in italicized type</i>	Italics emphasize a point or denote new terms at the place where they are defined in the text. Italics are also used when referring to publication titles.
NEW!	New information. In a PDF, this is searchable text.

Table 3: Command syntax

Convention	Description
bold text	Bold text indicates command names, keywords, and command options.
<i>italic text</i>	Italic text indicates variable content.
[]	Syntax components displayed within square brackets are optional. Default responses to system prompts are enclosed in square brackets.
{ x y z }	A choice of required parameters is enclosed in curly brackets separated by vertical bars. You must select one of the options.
x y	A vertical bar separates mutually exclusive elements.
< >	Nonprinting characters, such as passwords, are enclosed in angle brackets.

Table 3: Command syntax (continued)

Convention	Description
...	Repeat the previous element, for example, <i>member [member . . .]</i> .
\	In command examples, the backslash indicates a “soft” line break. When a backslash separates two lines of a command input, enter the entire command at the prompt without the backslash.

Platform-Dependent Conventions

Unless otherwise noted, all information applies to all platforms supported by Switch Engine software, which are the following:

- ExtremeSwitching® switches
- SummitStack™

When a feature or feature implementation applies to specific platforms, the specific platform is noted in the heading for the section describing that implementation in the Switch Engine command documentation (see the Extreme Documentation page at www.extremenetworks.com/documentation/). In many cases, although the command is available on all platforms, each platform uses specific keywords. These keywords specific to each platform are shown in the Syntax Description and discussed in the Usage Guidelines sections.

Terminology

When features, functionality, or operation is specific to a device family, such as ExtremeSwitching, the family name is used. Explanations about features and operations that are the same across all product families simply refer to the product as the *device*.

Send Feedback

The User Enablement team at Extreme Networks has made every effort to ensure that this document is accurate, complete, and easy to use. We strive to improve our documentation to help you in your work, so we want to hear from you. We welcome all feedback, but we especially want to know about:

- Content errors, or confusing or conflicting information.
- Improvements that would help you find relevant information.
- Broken links or usability issues.

To send feedback, email us at documentation@extremenetworks.com.

Provide as much detail as possible including the publication title, topic heading, and page number (if applicable), along with your comments and suggestions for improvement.

Help and Support

If you require assistance, contact Extreme Networks using one of the following methods:

Extreme Portal

Search the GTAC (Global Technical Assistance Center) knowledge base; manage support cases and service contracts; download software; and obtain product licensing, training, and certifications.

The Hub

A forum for Extreme Networks customers to connect with one another, answer questions, and share ideas and feedback. This community is monitored by Extreme Networks employees, but is not intended to replace specific guidance from GTAC.

Call GTAC

For immediate support: (800) 998 2408 (toll-free in U.S. and Canada) or 1 (408) 579 2800. For the support phone number in your country, visit www.extremenetworks.com/support/contact.

Before contacting Extreme Networks for technical support, have the following information ready:

- Your Extreme Networks service contract number, or serial numbers for all involved Extreme Networks products
- A description of the failure
- A description of any actions already taken to resolve the problem
- A description of your network environment (such as layout, cable type, other relevant environmental information)
- Network load at the time of trouble (if known)
- The device history (for example, if you have returned the device before, or if this is a recurring problem)
- Any related RMA (Return Material Authorization) numbers

Subscribe to Product Announcements

You can subscribe to email notifications for product and software release announcements, Field Notices, and Vulnerability Notices.

1. Go to [The Hub](#).
2. In the list of categories, expand the **Product Announcements** list.
3. Select a product for which you would like to receive notifications.
4. Select **Subscribe**.
5. To select additional products, return to the **Product Announcements** list and repeat steps 3 and 4.

You can modify your product selections or unsubscribe at any time.



UZTNA General Release Information

Overview

Universal Zero Trust Network Access (UZTNA) integrates network, application, and device access security within a single solution. To bolster security organization wide, you can establish and maintain a consistent security policy across your network with a single solution to manage and enforce an identity-level zero trust policy for all users. You can also manage user networks, applications, and Internet of Things (IoT) device access independent of the user's location.

Universal ZTNA combines and enhances remote and campus access security. Remote access leverages ZTNA continuous authentication, tunneled application sessions with direct to cloud routing. On campus access combines ZTNA and NAC capabilities to control access to the network and applications for headed and headless devices.

Switch Onboarding Options

Option #1 – Managed

- Supported NOSs: Switch Engine only
- Supported Switches: 4120, 4220, 5320, 5420, 5520, 5720, x435
- Minimum NOS version: 32.6.3
- Summary: Switch configuration is fully managed by XIQ. The Instant Secure Port workflow is used to provision Radius/authentication and UZTNA policy is provisioned via static policy.

Option #2 – Locally Managed

- Supported NOSs: Fabric Engine and Switch Engine
- Supported Switches: 5320, 5420, 5520, 5720, 7520, 7720, x435
- Minimum NOS version: Fabric Engine 9.0.2, Switch Engine 32.6.3
- Summary: Switch is onboarded but switch configuration is managed outside of cloud. UZTNA network policy is provisioned via dACLs by Radius VSAs



Device Support Information

[Access Points](#) on page 9

[Switches](#) on page 13

[Supported Browsers and Display Settings](#) on page 26

This section lists the devices that Universal ZTNA supports and includes the latest version of the software that each device supports.

Access Points

Access Point information is provided in the following sections:

- [Universal Hardware](#) on page 9
- [\(Cloud Native\)](#) on page 10
- [Extreme Wireless](#) on page 12

Universal Hardware

Device Model	Latest Supported Release	Comments
AP302W	IQ Engine 10.6.6 WiNG OS 7.9.3.0 AP 10.8.1	Platform support introduced with IQ Engine 10.3.1
AP305C	IQ Engine 10.6.6 WiNG OS 7.9.3.0 AP 10.8.1	Platform support introduced with IQ Engine 10.1.1
AP305C-1	IQ Engine 10.6.6 WiNG OS 7.9.3.0 AP 10.8.1	Platform support introduced with IQ Engine 10.4.6
AP305CX	IQ Engine 10.6.6 WiNG OS 7.9.3.0 AP 10.8.1	Platform support introduced with IQ Engine 10.1.1
AP3000	IQ Engine 10.6.6 AP 10.8.1	Platform support introduced with IQ engine 10.6.1
AP3000X	IQ Engine 10.6.6	Platform support introduced with IQ Engine 10.6.1

Device Model	Latest Supported Release	Comments
AP4000	IQ Engine 10.6.6 AP 10.8.1	Platform support introduced with IQ Engine 10.4.1
AP4000-1	IQ Engine 10.6.6 AP 10.8.1	Platform support introduced with IQ Engine 10.4.2
AP410C	IQ Engine 10.6.6 WiNG OS 7.9.3.0 AP 10.8.1	Platform support introduced with IQ Engine 10.1.2
AP410C-1	IQ Engine 10.6.6 WiNG OS 7.9.3.0 AP 10.8.1	Platform support introduced with IQ Engine 10.4.6
AP460C	IQ Engine 10.6.6 WiNG OS 7.9.3.0 AP 10.8.1	Platform support introduced with IQ Engine 10.1.2
AP460S6C	IQ Engine 10.6.6 WiNG OS 7.9.3.0 AP 10.8.1	Platform support introduced with IQ Engine 10.1.2
AP460S12C	IQ Engine 10.6.6 WiNG OS 7.9.3.0 AP 10.8.1	Platform support introduced with IQ Engine 10.1.2
AP5010	IQ Engine 10.6.6 AP 10.8.1 WiNG OS 7.9.3.0	Platform support introduced with IQ Engine 10.5.1
AP5050U	IQ Engine 10.6.6 AP 10.8.1	Platform support introduced with IQ Engine 10.5.3
AP5050D	IQ Engine 10.6.6 AP 10.8.1	Platform support introduced with IQ Engine 10.5.3
AP510C/CX	10.6.6	Platform support introduced with 10.0.8

(Cloud Native)

Device Model	Latest Supported Release	Comments
AP630	10.6.2	Platform support introduced with 10.0.1. End of Life Information
AP650	10.6.6	Platform support introduced with 10.0.1. End of Life Information
AP650X	10.6.6	Platform support introduced with 10.0.1. End of Life Information

Device Model	Latest Supported Release	Comments
AP1130	10.6.1a	Platform support introduced with 8.2.1. End of Life Information
AP550	10.6.1a	Platform support introduced with 7.0.3. End of Life Information
AP390	6.5.16	End of Life Information
AP370	6.5.16	End of Life Information
AP350	6.5.16	End of Life Information
AP340	6.5.10	End of Life Information
AP330	6.5.16	End of Life Information
AP320	6.5.10	End of Life Information
AP250	10.6.1a	Platform support introduced with 7.0.2.
AP245X	10.6.1a	Platform support introduced with 7.0.2. End of Life Information
AP230	10.6.1a	Platform support introduced with 8.2.1. End of Life Information
AP170	6.5.16	End of Life Information
AP150W	10.6.1a	Platform support introduced with 8.1.1.
AP141	6.5.16	End of Life Information
AP130	10.6.1a	Platform support introduced with 8.2.1. End of Life Information
AP122	10.6.1a	Platform support introduced with 7.0.4.
AP122X	10.6.1a	Platform support introduced with 8.2.1. End of Life Information
AP121	6.5.16	End of Life Information
AP120	6.5.10	End of Life Information
Atom AP30	10.6.1a	Platform support introduced with 8.3.2.

Device Model	Latest Supported Release	Comments
AP560i	WiNG OS 7.9.3.0	Monitor only
AP560h	WiNG OS 7.9.3.0	Monitor only
AP505	WiNG OS 7.9.3.0	Monitor only
AP510i	WiNG OS 7.9.3.0	Monitor only
AP510i-1	WiNG OS 7.9.3.0	Monitor only
AP460i/e	WiNG OS 7.9.3.0	Monitor only

Device Model	Latest Supported Release	Comments
AP410i/e	WiNG OS 7.9.3.0	Monitor only
AP410i-1	WiNG OS 7.9.3.0	Monitor only
AP360i/e	WiNG OS 7.9.3.0	Monitor only
AP310i/e	WiNG OS 7.9.3.0	Monitor only
AP310i/e-1	WiNG OS 7.9.3.0	Monitor Only
AP3000	WiNG OS 7.9.3.0	Monitor Only
AP8533	WiNG OS 7.7.1.8	Monitor only
AP8432	WiNG OS 7.7.1.8	Monitor only
AP8232	WiNG OS 5.9.1.8	Monitor only
AP8222	WiNG OS 5.8.6.11	Monitor only
AP8163	WiNG OS 5.9.7.1	Monitor only
AP8132	WiNG OS 5.9.1.8	Monitor only
AP8122	WiNG OS 5.9.1.8	Monitor only
AP7662	WiNG OS 7.7.1.8	Monitor only
AP7632	WiNG OS 7.7.1.8	Monitor only
AP7622	WiNG OS 5.9.7.1	Monitor only
AP7612	WiNG OS 7.7.1.8	Monitor only
AP7602	WiNG OS 5.9.7.1	Monitor only
AP7562	WiNG OS 7.7.1.8	Monitor only
AP7532	WiNG OS 7.7.1.8	Monitor only
AP7522	WiNG OS 7.7.1.8	Monitor only
AP7502	WiNG OS 5.9.7.1	Monitor only
AP7161	WiNG OS 5.9.1.8	Monitor only
AP7131	WiNG OS 5.8.6.11	Monitor only
AP6562	WiNG OS 5.9.1.8	Monitor only
AP6532	WiNG OS 5.9.1.8	Monitor only
AP6522	WiNG OS 5.9.1.8	Monitor only
AP6521	WiNG OS 5.9.1.8	Monitor only
AP6511	WiNG OS 5.8.6.11	Monitor only

Extreme Wireless

Device Model	Latest Supported Release	Comments
AP3965	ExtremeWireless 10.51	Monitor only
AP3935	ExtremeWireless 10.51	Monitor only

Device Model	Latest Supported Release	Comments
AP3917	ExtremeWireless 10.51	Monitor only
AP3916C	ExtremeWireless 10.51	Monitor only
AP3915	ExtremeWireless 10.51	Monitor only
AP3912	ExtremeWireless 10.51	Monitor only
SA201	ExtremeWireless 10.51	Monitor only

Switches

Switch information is provided in the following sections:

- [Universal Hardware](#) on page 13
- [ExtremeXOS](#) on page 19
- [VOSS](#) on page 23
- [\(Cloud Native\)](#) on page 24
- [Dell EMC](#) on page 25

For the latest release notes for Fabric Engine and Switch Engine, see the [Extreme Networks Documentation Site](#).

Universal Hardware

Device Model	Latest Supported Release	Standalone Support	Stack Support
5320-16P-4XE	Switch Engine 32.7 Fabric Engine 9.0	<ul style="list-style-type: none"> • Monitor • Template- and device-level configuration • SSH Proxy* • Supplemental CLI* 	Switch Engine: <ul style="list-style-type: none"> • Monitor • Template- and device-level configuration • SSH Proxy
5320-16P-4XE-DC	Switch Engine 32.7 Fabric Engine 9.0	<ul style="list-style-type: none"> • Monitor • Template- and device-level configuration • SSH Proxy* • Supplemental CLI* 	Switch Engine: <ul style="list-style-type: none"> • Monitor • Template- and device-level configuration • SSH Proxy
5320-24T-8XE	Switch Engine 32.7 Fabric Engine 9.0	<ul style="list-style-type: none"> • Monitor • Template- and device-level configuration • SSH Proxy* • Supplemental CLI* 	<ul style="list-style-type: none"> • Monitor • Template- and device-level configuration • SSH Proxy

Device Model	Latest Supported Release	Standalone Support	Stack Support
5320-24PT-8XE	Switch Engine 32.7 Fabric Engine 9.0	<ul style="list-style-type: none"> • Monitor • Template- and device-level configuration • SSH Proxy* • Supplemental CLI* 	<ul style="list-style-type: none"> • Monitor • Template- and device-level configuration • SSH Proxy
5320-48P-8XE	Switch Engine 32.7 Fabric Engine 9.0	<ul style="list-style-type: none"> • Monitor • Template- and device-level configuration • SSH Proxy* • Supplemental CLI* 	<ul style="list-style-type: none"> • Monitor • Template- and device-level configuration • SSH Proxy
5320-48T-8XE	Switch Engine 32.7 Fabric Engine 9.0	<ul style="list-style-type: none"> • Monitor • Template- and device-level configuration • SSH Proxy* • Supplemental CLI* 	<ul style="list-style-type: none"> • Monitor • Template- and device-level configuration • SSH Proxy
5420F-24T-4XE	Switch Engine 32.7 Fabric Engine 9.0	<ul style="list-style-type: none"> • Monitor • Template- and device-level configuration • SSH Proxy* • Supplemental CLI* 	<ul style="list-style-type: none"> • Monitor • Template- and device-level configuration • SSH Proxy
5420F-24P-4XE	Switch Engine 32.7 Fabric Engine 9.0	<ul style="list-style-type: none"> • Monitor • Template- and device-level configuration • SSH Proxy* • Supplemental CLI* 	<ul style="list-style-type: none"> • Monitor • Template- and device-level configuration • SSH Proxy
5420F-24S-4XE	Switch Engine 32.7 Fabric Engine 9.0	<ul style="list-style-type: none"> • Monitor • Template- and device-level configuration • SSH Proxy* • Supplemental CLI* 	<ul style="list-style-type: none"> • Monitor • Template- and device-level configuration • SSH Proxy
5420F-48T-4XE	Switch Engine 32.7 Fabric Engine 9.0	<ul style="list-style-type: none"> • Monitor • Template- and device-level configuration • SSH Proxy* • Supplemental CLI* 	<ul style="list-style-type: none"> • Monitor • Template- and device-level configuration • SSH Proxy

Device Model	Latest Supported Release	Standalone Support	Stack Support
5420F-48P-4XE	Switch Engine 32.7 Fabric Engine 9.0	<ul style="list-style-type: none"> • Monitor • Template- and device-level configuration • SSH Proxy* • Supplemental CLI* 	<ul style="list-style-type: none"> • Monitor • Template- and device-level configuration • SSH Proxy
5420F-48P-4XL	Switch Engine 32.7 Fabric Engine 9.0	<ul style="list-style-type: none"> • Monitor • Template- and device-level configuration • SSH Proxy* • Supplemental CLI* 	<ul style="list-style-type: none"> • Monitor • Template- and device-level configuration • SSH Proxy
5420F-8W-16P-4XE	Switch Engine 32.7 Fabric Engine 9.0	<ul style="list-style-type: none"> • Monitor • Template- and device-level configuration • SSH Proxy* • Supplemental CLI* 	<ul style="list-style-type: none"> • Monitor • Template- and device-level configuration • SSH Proxy
5420F-16W-32P-4XE	Switch Engine 32.7 Fabric Engine 9.0	<ul style="list-style-type: none"> • Monitor • Template- and device-level configuration • SSH Proxy* • Supplemental CLI* 	<ul style="list-style-type: none"> • Monitor • Template- and device-level configuration • SSH Proxy
5420F-16MW-32P-4XE	Switch Engine 32.7 Fabric Engine 9.0	<ul style="list-style-type: none"> • Monitor • Template- and device-level configuration • SSH Proxy* • Supplemental CLI* 	<ul style="list-style-type: none"> • Monitor • Template- and device-level configuration • SSH Proxy
5420M-24T-4YE	Switch Engine 32.7 Fabric Engine 9.0	<ul style="list-style-type: none"> • Monitor • Template- and device-level configuration • SSH Proxy* • Supplemental CLI* 	<ul style="list-style-type: none"> • Monitor • Template- and device-level configuration • SSH Proxy
5420M-24W-4YE	Switch Engine 32.7 Fabric Engine 9.0	<ul style="list-style-type: none"> • Monitor • Template- and device-level configuration • SSH Proxy* • Supplemental CLI* 	<ul style="list-style-type: none"> • Monitor • Template- and device-level configuration • SSH Proxy

Device Model	Latest Supported Release	Standalone Support	Stack Support
5420M-48T-4YE	Switch Engine 32.7 Fabric Engine 9.0	<ul style="list-style-type: none"> • Monitor • Template- and device-level configuration • SSH Proxy* • Supplemental CLI* 	<ul style="list-style-type: none"> • Monitor • Template- and device-level configuration • SSH Proxy
5420M-48W-4YE	Switch Engine 32.7 Fabric Engine 9.0	<ul style="list-style-type: none"> • Monitor • Template- and device-level configuration • SSH Proxy* • Supplemental CLI* 	<ul style="list-style-type: none"> • Monitor • Template- and device-level configuration • SSH Proxy
5420M-16MW-32P-4YE	Switch Engine 32.7 Fabric Engine 9.0	<ul style="list-style-type: none"> • Monitor • Template- and device-level configuration • SSH Proxy* • Supplemental CLI* 	<ul style="list-style-type: none"> • Monitor • Template- and device-level configuration • SSH Proxy
5520-24W	Switch Engine 32.7 Fabric Engine 9.0	<ul style="list-style-type: none"> • Monitor • Template- and device-level configuration • SSH Proxy* • Supplemental CLI* 	<ul style="list-style-type: none"> • Monitor • Template- and device-level configuration • SSH Proxy
5520-24T	Switch Engine 32.7 Fabric Engine 9.0	<ul style="list-style-type: none"> • Monitor • Template- and device-level configuration • SSH Proxy* • Supplemental CLI* 	<ul style="list-style-type: none"> • Monitor • Template- and device-level configuration • SSH Proxy
5520-24T-ACDC	Switch Engine 32.7 Fabric Engine 9.0	<ul style="list-style-type: none"> • Monitor • Template- and device-level configuration • SSH Proxy* • Supplemental CLI* 	Switch Engine: <ul style="list-style-type: none"> • Monitor • Template- and device-level configuration • SSH Proxy
5520-24X-ACDC	Switch Engine 32.7 Fabric Engine 9.0	<ul style="list-style-type: none"> • Monitor • Template- and device-level configuration • SSH Proxy* • Supplemental CLI* 	Switch Engine: <ul style="list-style-type: none"> • Monitor • Template- and device-level configuration • SSH Proxy

Device Model	Latest Supported Release	Standalone Support	Stack Support
5520-48W	Switch Engine 32.7 Fabric Engine 9.0	<ul style="list-style-type: none"> • Monitor • Template- and device-level configuration • SSH Proxy* • Supplemental CLI* 	<ul style="list-style-type: none"> • Monitor • Template- and device-level configuration • SSH Proxy
5520-48T	Switch Engine 32.7 Fabric Engine 9.0	<ul style="list-style-type: none"> • Monitor • Template- and device-level configuration • SSH Proxy* • Supplemental CLI* 	<ul style="list-style-type: none"> • Monitor • Template- and device-level configuration • SSH Proxy
5520-48T-ACDC	Switch Engine 32.7 Fabric Engine 9.0	<ul style="list-style-type: none"> • Monitor • Template- and device-level configuration • SSH Proxy* • Supplemental CLI* 	<ul style="list-style-type: none"> • Monitor • Template- and device-level configuration • SSH Proxy
5520-12MW-36W	Switch Engine 32.7 Fabric Engine 9.0	<ul style="list-style-type: none"> • Monitor • Template- and device-level configuration • SSH Proxy* • Supplemental CLI* 	<ul style="list-style-type: none"> • Monitor • Template- and device-level configuration • SSH Proxy
5520-48SE	Switch Engine 32.7 Fabric Engine 9.0	<ul style="list-style-type: none"> • Monitor • Template- and device-level configuration • SSH Proxy* • Supplemental CLI* 	<ul style="list-style-type: none"> • Monitor • Template- and device-level configuration • SSH Proxy
5520-48SE-ACDC	Switch Engine 32.7 Fabric Engine 9.0	<ul style="list-style-type: none"> • Monitor • Template- and device-level configuration • SSH Proxy* • Supplemental CLI* 	<ul style="list-style-type: none"> • Monitor • Template- and device-level configuration • SSH Proxy
5520-24X	Switch Engine 32.7 Fabric Engine 9.0	<ul style="list-style-type: none"> • Monitor • Template- and device-level configuration • SSH Proxy* • Supplemental CLI* 	Switch Engine: <ul style="list-style-type: none"> • Monitor • Template- and device-level configuration • SSH Proxy

Device Model	Latest Supported Release	Standalone Support	Stack Support
5720-24MW	Switch Engine 32.7 Fabric Engine 9.0	<ul style="list-style-type: none"> • Monitor • Template- and device-level configuration • SSH Proxy* • Supplemental CLI* 	Switch Engine: <ul style="list-style-type: none"> • Monitor • Template- and device-level configuration • SSH Proxy
5720-48MW	Switch Engine 32.7 Fabric Engine 9.0	<ul style="list-style-type: none"> • Monitor • Template- and device-level configuration • SSH Proxy* • Supplemental CLI* 	Switch Engine: <ul style="list-style-type: none"> • Monitor • Template- and device-level configuration • SSH Proxy
5720-24MXW	Switch Engine 32.7 Fabric Engine 9.0	<ul style="list-style-type: none"> • Monitor • Template- and device-level configuration • SSH Proxy* • Supplemental CLI* 	Switch Engine: <ul style="list-style-type: none"> • Monitor • Template- and device-level configuration • SSH Proxy
5720-48MXW	Switch Engine 32.7 Fabric Engine 9.0	<ul style="list-style-type: none"> • Monitor • Template- and device-level configuration • SSH Proxy* • Supplemental CLI* 	Switch Engine: <ul style="list-style-type: none"> • Monitor • Template- and device-level configuration • SSH Proxy
7520-48Y	Switch Engine 32.7 Fabric Engine 9.0	Switch Engine: <ul style="list-style-type: none"> • Monitor • Template- and device-level configuration • SSH Proxy* • Supplemental CLI* Fabric Engine: Monitor	Switch Engine: <ul style="list-style-type: none"> • Monitor • Template- and device-level configuration • SSH Proxy
7520-48YE	Switch Engine 32.7 Fabric Engine 9.0	Switch Engine: <ul style="list-style-type: none"> • Monitor • Template- and device-level configuration • SSH Proxy* • Supplemental CLI* Fabric Engine: Monitor	Switch Engine: <ul style="list-style-type: none"> • Monitor • Template- and device-level configuration • SSH Proxy

Device Model	Latest Supported Release	Standalone Support	Stack Support
7520-48XT	Switch Engine 32.7 Fabric Engine 9.0	Switch Engine: <ul style="list-style-type: none"> Monitor Template- and device-level configuration SSH Proxy* Supplemental CLI* Fabric Engine: Monitor	Switch Engine: <ul style="list-style-type: none"> Monitor Template- and device-level configuration SSH Proxy
7720-32c	Switch Engine 32.7 Fabric Engine 9.0	Switch Engine: <ul style="list-style-type: none"> Monitor Template- and device-level configuration SSH Proxy* Supplemental CLI* Fabric Engine: Monitor	Switch Engine: <ul style="list-style-type: none"> Monitor Template- and device-level configuration SSH Proxy

**Note**

* SSH Proxy and Supplemental CLI can be used for configuring additional parameters not currently available within template or device-level configurations.

ExtremeXOS

Device Model	Latest Supported Release	Standalone Support	Stack Support
X435-8P-2T-W	ExtremeXOS 32.6.3	<ul style="list-style-type: none"> Monitor Template- and device-level configuration SSH Proxy* Supplemental CLI* 	N/A
X435-24T-4S	ExtremeXOS 32.6.3	<ul style="list-style-type: none"> Monitor Template- and device-level configuration SSH Proxy* Supplemental CLI* 	N/A
X435-24P-4S	ExtremeXOS 32.6.3	<ul style="list-style-type: none"> Monitor Template- and device-level configuration SSH Proxy* Supplemental CLI* 	N/A

Device Model	Latest Supported Release	Standalone Support	Stack Support
X435-8T-4S	ExtremeXOS 32.6.3	<ul style="list-style-type: none"> • Monitor • Template- and device-level configuration • SSH Proxy* • Supplemental CLI* 	N/A
X435-8P-4S	ExtremeXOS 32.6.3	<ul style="list-style-type: none"> • Monitor • Template- and device-level configuration • SSH Proxy* • Supplemental CLI* 	N/A
X440-G2-12p-10GE4	ExtremeXOS 32.6.3	<ul style="list-style-type: none"> • Monitor • Template- and device-level configuration • SSH Proxy* • Supplemental CLI* 	<ul style="list-style-type: none"> • Monitor • Template- and device-level configuration • SSH Proxy* • Supplemental CLI*
X440-G2-12t-10GE4	ExtremeXOS 32.6.3	<ul style="list-style-type: none"> • Monitor • Template- and device-level configuration • SSH Proxy* • Supplemental CLI* 	<ul style="list-style-type: none"> • Monitor • Template- and device-level configuration • SSH Proxy* • Supplemental CLI*
X440-G2-24p-10GE4	ExtremeXOS 32.6.3	<ul style="list-style-type: none"> • Monitor • Template- and device-level configuration • SSH Proxy* • Supplemental CLI* 	<ul style="list-style-type: none"> • Monitor • Template- and device-level configuration • SSH Proxy* • Supplemental CLI*
X440-G2-24t-10GE4	ExtremeXOS 32.6.3	<ul style="list-style-type: none"> • Monitor • Template- and device-level configuration • SSH Proxy* • Supplemental CLI* 	<ul style="list-style-type: none"> • Monitor • Template- and device-level configuration • SSH Proxy* • Supplemental CLI*

Device Model	Latest Supported Release	Standalone Support	Stack Support
X440-G2-48p-10GE4	ExtremeXOS 32.6.3	<ul style="list-style-type: none"> • Monitor • Template- and device-level configuration • SSH Proxy* • Supplemental CLI* 	<ul style="list-style-type: none"> • Monitor • Template- and device-level configuration • SSH Proxy* • Supplemental CLI*
X440-G2-48t-10GE4	ExtremeXOS 32.6.3	<ul style="list-style-type: none"> • Monitor • Template- and device-level configuration • SSH Proxy* • Supplemental CLI* 	<ul style="list-style-type: none"> • Monitor • Template- and device-level configuration • SSH Proxy* • Supplemental CLI*
X450-G2-24p-GE4	ExtremeXOS 32.6.3	<ul style="list-style-type: none"> • Monitor • Template- and device-level configuration • SSH Proxy* • Supplemental CLI* 	Monitor
X450-G2-24p-10GE4	ExtremeXOS 32.6.3	<ul style="list-style-type: none"> • Monitor • Template- and device-level configuration • SSH Proxy* • Supplemental CLI* 	Monitor
X450-G2-48p-10GE4	ExtremeXOS 32.6.3	<ul style="list-style-type: none"> • Monitor • Template- and device-level configuration • SSH Proxy* • Supplemental CLI* 	Monitor
X460-G2-24p-10GE4	ExtremeXOS 32.6.3	<ul style="list-style-type: none"> • Monitor • Template- and device-level configuration • SSH Proxy* • Supplemental CLI* 	Monitor
X460-G2-48p-10GE4	ExtremeXOS 32.6.3	<ul style="list-style-type: none"> • Monitor • Template- and device-level configuration • SSH Proxy* • Supplemental CLI* 	Monitor

Device Model	Latest Supported Release	Standalone Support	Stack Support
X465-24W	ExtremeXOS 32.6.3	<ul style="list-style-type: none"> • Monitor • Template- and device-level configuration • SSH Proxy* • Supplemental CLI* 	Monitor
X465-48W	ExtremeXOS 32.6.3	<ul style="list-style-type: none"> • Monitor • Template- and device-level configuration • SSH Proxy* • Supplemental CLI* 	Monitor
X465-24MU	ExtremeXOS 32.6.3	<ul style="list-style-type: none"> • Monitor • Template- and device-level configuration • SSH Proxy* • Supplemental CLI* 	Monitor
X465-48P	ExtremeXOS 32.6.3	<ul style="list-style-type: none"> • Monitor • Template- and device-level configuration • SSH Proxy* • Supplemental CLI* 	Monitor
X465-24MU-24W	ExtremeXOS 32.6.3	<ul style="list-style-type: none"> • Monitor • Template- and device-level configuration • SSH Proxy* • Supplemental CLI* 	Monitor



Note

* SSH Proxy and Supplemental CLI can be used for configuring additional parameters not currently available within template or device-level configurations.

VOSS

Device Model	Latest Supported Release	Standalone Support	Stack Support
VSP7432CQ	VOSS 9.0	<ul style="list-style-type: none"> • Monitor • Template- and device-level configuration • SSH Proxy* • Supplemental CLI* 	Not supported
VSP7400-48Y	VOSS 9.0	<ul style="list-style-type: none"> • Monitor • Template- and device-level configuration • SSH Proxy* • Supplemental CLI* 	Not supported
VSP4900-48P	VOSS 9.0	<ul style="list-style-type: none"> • Monitor • Template- and device-level configuration • SSH Proxy* • Supplemental CLI* 	Not supported
VSP4900-24XE	VOSS 9.0	<ul style="list-style-type: none"> • Monitor • Template- and device-level configuration • SSH Proxy* • Supplemental CLI* 	Not supported
VSP4900-24S	VOSS 9.0	<ul style="list-style-type: none"> • Monitor • Template- and device-level configuration • SSH Proxy* • Supplemental CLI* 	Not supported
VSP4900-12MXU-12XE	VOSS 9.0	<ul style="list-style-type: none"> • Monitor • Template- and device-level configuration • SSH Proxy* • Supplemental CLI* 	Not supported

Device Model	Latest Supported Release	Standalone Support	Stack Support
XA1480	VOSS 8.10	<ul style="list-style-type: none">• Monitor• Template- and device-level configuration• SSH Proxy*• Supplemental CLI*	Not supported
XA1440	VOSS 8.10	<ul style="list-style-type: none">• Monitor• Template- and device-level configuration• SSH Proxy*• Supplemental CLI*	Not supported



Note

* SSH Proxy and Supplemental CLI can be used for configuring additional parameters not currently available within template or device-level configurations.

(Cloud Native)

Device Model	Latest Supported Release
SR2024 End of Life	6.5.12
SR2024P End of Life	6.5.12
SR2124P End of Life	6.5.12
SR2148P End of Life	6.5.12
SR2208P	FASTPATH 8.2.0.2 v1.0.1.29 1.1.31
SR2224P	FASTPATH 8.2.0.2 v1.0.1.29 1.1.31
SR2324P	FASTPATH 8.2.0.2 v1.0.1.29 1.1.31
SR2348P	FASTPATH 8.2.0.2 v1.0.1.29 1.1.31

Dell EMC

Device Model	Latest Supported Release
N3132PX	IQAgent 1.1.29
N3024EF	IQAgent 1.1.29
N3024EP	IQAgent 1.1.29
N3024ET	IQAgent 1.1.29
N3048EP	IQAgent 1.1.29
N3048ET	IQAgent 1.1.29
N3024	IQAgent 1.1.29
N3024F	IQAgent 1.1.29
N3024P	IQAgent 1.1.29
N3048	IQAgent 1.1.29
N3048P	IQAgent 1.1.29
N2128PX	IQAgent 1.1.29
N2024	IQAgent 1.1.29
N2024P	IQAgent 1.1.29
N2048	IQAgent 1.1.29
N2048P	IQAgent 1.1.29
N1524	IQAgent 1.1.29
N1524P	IQAgent 1.1.29
N1548	IQAgent 1.1.29
N1548P	IQAgent 1.1.29
N1108T-ON	IQAgent 1.1.29
N1108P-ON	IQAgent 1.1.29
N1124T-ON	IQAgent 1.1.29
N1124P-ON	IQAgent 1.1.29
N1148T-ON	IQAgent 1.1.29
N1148P-ON	IQAgent 1.1.29

Supported Browsers and Display Settings

Desktop and Mobile Browser Support

**Note**

Universal ZTNA does not support 32-bit browsers.

Table 4: Desktop Browsers

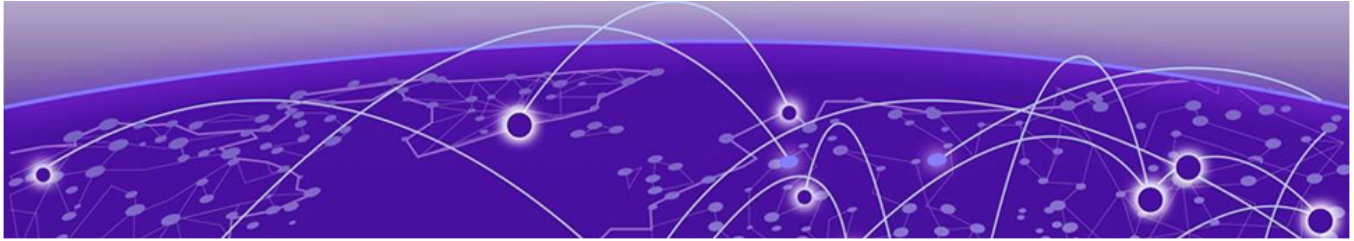
Desktop Browsers	Version Supported
Chrome	v116
Edge	v115
Firefox	v115
Opera	v60
Safari	v13

Table 5: Mobile Browsers

Mobile Browsers	Version Supported
Android Webview	v73
Chrome for Android	v116
Edge	v79
Firefox for Android	v67
Opera for Android	v52
Safari for iOS	v13

Display Settings

Universal ZTNA supports display resolutions of 1280 x 1024 or higher.



Open Issues in 24.1.0

The following table lists open UZTNA product issues.

Table 6: Open Issues Table

Issue Name	Description
SSID Deletion Sync	After deleting an SSID in ExtremeCloud IQ, the change is not reflected in Universal ZTNA. Stale SSID records persist in the desktop agent and under 'conditions' in policies.
Chromebook Information Display	Chromebook details (IP Address, Hostname, Model name, Device family, Operating System) are either displayed incorrectly or appear as null values.
Posture Check Activity Log	When performing a posture check on devices, no entry is recorded in the activity log.
License Description Empty	Within the License Management section, the description of the license is blank.