



Universal Compute Platform Release Notes

Version 5.07.01

9038934-00 Rev. AA
June 2024



Copyright © 2024 Extreme Networks, Inc. All rights reserved.

Legal Notice

Extreme Networks, Inc. reserves the right to make changes in specifications and other information contained in this document and its website without prior notice. The reader should in all cases consult representatives of Extreme Networks to determine whether any such changes have been made.

The hardware, firmware, software or any specifications described or referred to in this document are subject to change without notice.

Trademarks

Extreme Networks and the Extreme Networks logo are trademarks or registered trademarks of Extreme Networks, Inc. in the United States and/or other countries.

All other names (including any product names) mentioned in this document are the property of their respective owners and may be trademarks or registered trademarks of their respective companies/owners.

For additional information on Extreme Networks trademarks, see: www.extremenetworks.com/about-extreme-networks/company/legal/trademarks

Open Source Declarations

Some software files have been licensed under certain open source or third-party licenses.

End-user license agreements and open source declarations can be found at: <https://www.extremenetworks.com/support/policies/open-source-declaration/>

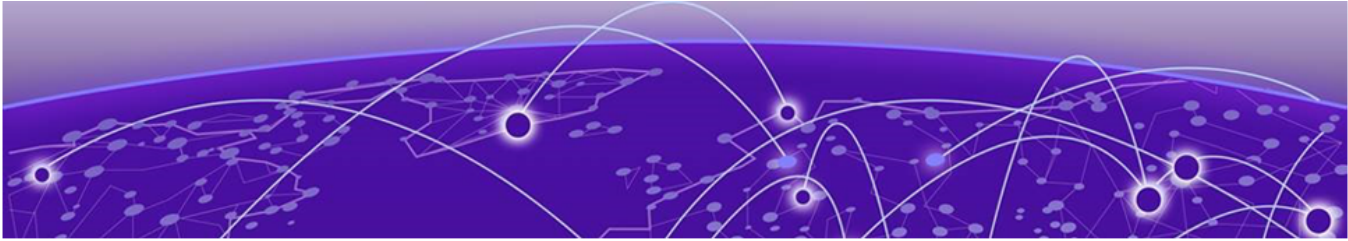


Table of Contents

Release Notes.....	4
New Features and Updates.....	4
Supported Hardware for Self-Orchestration.....	7
Supported Hardware for Managed Orchestration.....	7
Documents.....	7
Known Issues.....	8
Help and Support.....	8
Subscribe to Product Announcements.....	9



Release Notes

- [New Features and Updates](#) on page 4
- [Supported Hardware for Self-Orchestration](#) on page 7
- [Supported Hardware for Managed Orchestration](#) on page 7
- [Documents](#) on page 7
- [Known Issues](#) on page 8
- [Help and Support](#) on page 8

The Universal Compute Platform forms the basis for ExtremeCloud Edge deployment models, providing a container-based orchestration framework, in an Extreme qualified and validated high performance hardware configuration. The framework natively supports clustering, distributed file system and orchestration through Kubernetes, providing a highly resilient application operational base. CaaS is a cloud service model that allows users to manage and deploy containers, applications, and clusters through container-based virtualization.

The Universal Compute Platform offers flexible application orchestration, enables self-guided application installation, management, and full SaaS deployment of select applications such as ExtremeCloud™ IQ.

New Features and Updates

The following table lists the 5.07.01 features per deployment type.

Table 1: New Features per Deployment Type

	Managed Orchestration	Self-Orchestration
Features	<ul style="list-style-type: none">• Readiness Assessment• Cluster upgrade from any node• LAG combinations of up to four data ports• Autodiscovery for cloud connection	<ul style="list-style-type: none">• Support for 1130C• LAG combinations of up to four data ports• Autodiscovery for cloud connection



Note

For feature descriptions, see the below table.

The following table provides summaries for features and updates with Universal Compute Platform version 5.07.01.

Table 2: New Features and Updates for v5.07.01

ID	Feature Description
XCACP-525	<p>Support for 1130C Appliance</p> <p>Universal Compute Platform now support the 1130C hardware appliance for ExtremeCloud Edge - Self-Orchestration deployments. The new 1130C platform is a lower capacity alternative to the existing 4120C. The 1130C support includes:</p> <ul style="list-style-type: none"> • Includes 2 x 1 Gbps ICC Ports/RJ45 and 4 x 1 Gbps Data 1-4/ RJ45 • Supports up to one instance of Tunnel Concentrator or ExtremeCloud IQ Controller on a single 1130C appliance. • Supports Self-Orchestrated deployments only. Managed Orchestration is not supported. <p>See <i>Extreme Networks Universal Compute Network Platform 1130C Installation Guide</i> for installation information.</p> <p>Note: The 1130C appliance is expected to be available in summer 2024. See the Extreme Networks website for launch information.</p>
XCACP-664 and XCACP-612	<p>LAG Enhancements</p> <p>The following enhancements to existing Link Aggregation Group (LAG) support provide improved interface redundancy, load balancing, and simplified configuration:</p> <ul style="list-style-type: none"> • LAG Combinations of up to four Data Ports (XCACP-664)—You can now configure LAG interfaces that group between two and four data ports within a single LAG interface. To be grouped into a LAG interface, the data ports within a single LAG interface must be configured to run at the same speed. <p>Note: For the 1130C, all four data ports are already at the same speed. However, for the 4120C, if you're combining three or four data ports into a LAG, configure the speed for the LAG ports to be 10 Gbps.</p> <ul style="list-style-type: none"> • Existing VLAN Retention (XCACP-612)—The LAG interface now inherits automatically the existing VLAN assignments from newly added ports. This update simplifies LAG configuration and reduces service disruptions when converting existing networks to use LAG connections <p>These updates apply to both Self-Orchestration and Managed Orchestration deployments of ExtremeCloud Edge.</p>

Table 2: New Features and Updates for v5.07.01 (continued)

ID	Feature Description
XCACP-624	<p>Readiness Assessment for ExtremeCloud IQ Installation</p> <p>The Readiness Assessment helps you check for errors in your settings before you configure your system for an ExtremeCloud Edge - Managed Orchestration deployment. Run the assessment immediately prior to installing the ExtremeCloud IQ engine. The assessment does the following:</p> <ul style="list-style-type: none"> • Pulls service groups and ports for inbound and outbound connections. • Lets you enter the IP addresses that you plan to deploy. • Tests your configuration and reports the results. <p>If you have errors, reconfigure your system and then run the assessment again. Once you receive a PASS, you can proceed to install the ExtremeCloud IQ engine.</p>
XCACP-302	<p>Cluster upgrade from any node</p> <p>To simplify the upgrade process for clustered deployments, you can upgrade the cluster from a single cluster node. This feature lets you do each of the following from a single cluster node:</p> <ul style="list-style-type: none"> • Upload the new software image. • Copy the software image to other nodes in the cluster. • Initiate upgrades for each cluster node from a single node. <p>This feature applies to ExtremeCloud Edge - Managed Orchestration only.</p>
XCACP-640	<p>Autodiscovery for Cloud Connection</p> <p>It is no longer required to configure the connection to ExtremeCloud IQ on Universal Compute Platform as the connection is discovered automatically. With this update, the Cloud Visibility configuration field at Administration > System > Settings is now a read-only field that populates automatically.</p>
XCACP-658	<p>Prefix Tech-Support with hostname of appliance</p> <p>To improve serviceability of the appliance, the hostname of the appliance is now prefixed to any files that get sent to tech support. The following convention is used:</p> <pre><hostname>tech_support_gui-<yyyymmdd>.<hhmmss>.<domain-name>.tar.gz</pre>
XCACP-638	<p>Renamed Deployment Type Labels</p> <p>The Deployment Type labels from the install process are updated to reflect the new deployment models. As part of the Universal Compute Platform installation, you must select one of these options:</p> <ul style="list-style-type: none"> • ExtremeCloud Edge – Managed Orchestration • ExtremeCloud Edge – Self-Orchestration

Supported Hardware for Self-Orchestration

ExtremeCloud Edge - Self-Orchestration deployments of Universal Compute Platform support the following hardware appliances. Depending on the hardware, you may be able to install more than one instance of an application on a node.

Table 3: Supported Hardware for ExtremeCloud Edge - Self-Orchestration

Hardware Appliance	Details
1130C	Ports: <ul style="list-style-type: none"> • 2 x 1 Gbps ICC Ports/RJ45 • 4 x 1 Gbps Data 1-4/RJ45 Self-Orchestration deployment application capacity: <ul style="list-style-type: none"> • Extreme Tunnel Concentrator—One instance per node • ExtremeCloud IQ Controller (CE1000)—One instance per node
4120C/4120C-1	Ports: <ul style="list-style-type: none"> • 2 x 1/10 Gbps ICC Ports/RJ45 • 2 x 1/10 Gbps Data 1-2/RJ45 • 2 x 1/10/25/40/50 Gbps Data 3-4/QSFP Self-Orchestration deployment application capacity: <ul style="list-style-type: none"> • Extreme Tunnel Concentrator—Up to three instances per node. • ExtremeWireless WiNG (CX9000)—One instance per node



Note

Support is for a single application type per node. Application mixing on a single appliance is not supported.

Supported Hardware for Managed Orchestration

ExtremeCloud Edge - Managed Orchestration deployments of Universal Compute Platform support the following hardware appliances.

Table 4: Supported Hardware for ExtremeCloud Edge - Managed Orchestration

Hardware Appliance	Details
4120C-1	Ports: <ul style="list-style-type: none"> • 2 x 1/10 Gbps ICC Ports/RJ45 • 2 x 1/10 Gbps Data 1-2/ RJ45 • 2 x 1/10/25/40/50 Gbps Data 3-4/QSFP

Documents

Refer to the following documents for information on Universal Compute Platform.

Hardware Appliance Installation Documents

- [Extreme Networks Universal Compute Platform Appliance 4120C Installation Guide](#)—Describes how to install the 4120C or 4120C-1 physical hardware appliance to support the Universal Compute Platform.
- *Extreme Networks Universal Compute Platform Appliance 1130C Installation Guide* (available summer 2024)—Describes how to install the 1130C physical hardware appliance to support the Universal Compute Platform.

Universal Compute Platform Documents

- [ExtremeCloud Edge – Self-Orchestration Deployment Guide for Universal Compute Platform](#)—Describes how to install and deploy a Self-Orchestrated standalone deployment of ExtremeCloud Edge for Universal Compute Platform (4120C or 1130C).
- [ExtremeCloud Edge – Managed Orchestration Deployment Guide for Universal Compute Platform](#)—Describes how to install and deploy a Managed Orchestration clustered deployment of ExtremeCloud Edge for Universal Compute Platform (4120C-1 only).
- [Universal Compute Platform User Guide](#)—Describes how to configure, maintain, and upgrade Universal Compute Platform.

Known Issues

An issue exists with the factory-default version of Universal Compute Platform. When unpacking your system, you may see an "Activation Required" message along with Locking ID. The message instructs you to select your license PKI file for activation. Ignore this message as your system will not lock up. This issue has been fixed with newer versions of Universal Compute Platform.

Help and Support

If you require assistance, contact Extreme Networks using one of the following methods:

Extreme Portal

Search the GTAC (Global Technical Assistance Center) knowledge base; manage support cases and service contracts; download software; and obtain product licensing, training, and certifications.

The Hub

A forum for Extreme Networks customers to connect with one another, answer questions, and share ideas and feedback. This community is monitored by Extreme Networks employees, but is not intended to replace specific guidance from GTAC.

Call GTAC

For immediate support: (800) 998 2408 (toll-free in U.S. and Canada) or 1 (408) 579 2826. For the support phone number in your country, visit: www.extremenetworks.com/support/contact

Before contacting Extreme Networks for technical support, have the following information ready:

- Your Extreme Networks service contract number, or serial numbers for all involved Extreme Networks products
- A description of the failure
- A description of any actions already taken to resolve the problem
- A description of your network environment (such as layout, cable type, other relevant environmental information)
- Network load at the time of trouble (if known)
- The device history (for example, if you have returned the device before, or if this is a recurring problem)
- Any related RMA (Return Material Authorization) numbers

Subscribe to Product Announcements

You can subscribe to email notifications for product and software release announcements, Field Notices, and Vulnerability Notices.

1. Go to [The Hub](#).
2. In the list of categories, expand the **Product Announcements** list.
3. Select a product for which you would like to receive notifications.
4. Select **Subscribe**.
5. To select additional products, return to the **Product Announcements** list and repeat steps 3 and 4.

You can modify your product selections or unsubscribe at any time.