

Part No. 216582-A
April 2004

4655 Great America Parkway
Santa Clara, CA 95054

Release Notes for the Nortel Networks Wireless LAN Mobile Adapter 2201 Release 1.1.0.0



NORTEL
NETWORKS™

Copyright © 2004 Nortel Networks

All rights reserved. April 2004.

The information in this document is subject to change without notice. The statements, configurations, technical data, and recommendations in this document are believed to be accurate and reliable, but are presented without express or implied warranty. Users must take full responsibility for their applications of any products specified in this document. The information in this document is proprietary to Nortel Networks NA Inc.

The software described in this document is furnished under a license agreement and may be used only in accordance with the terms of that license. The software license agreement is included in this document.

Trademarks

Nortel Networks and the Nortel Networks logos are trademarks of Nortel Networks.

Adobe and Acrobat are trademarks of Adobe Systems Incorporated.

Java is a trademark of Sun Microsystems, Inc.

All other trademarks and registered trademarks are the property of their respective owners.

Asterisks denote trademarks.

Statement of Conditions

In the interest of improving internal design, operational function, and/or reliability, Nortel Networks NA Inc. reserves the right to make changes to the products described in this document without notice.

Nortel Networks NA Inc. does not assume any liability that may occur due to the use or application of the product(s) or circuit layout(s) described herein.

Countries of Operation

This product may be operated in the following European Community countries: Austria, Belgium, Denmark, Finland, France, Germany, Greece, Iceland, Ireland, Italy, Luxembourg, Netherlands, Norway, Portugal, Spain, Sweden, Switzerland, United Kingdom. Please refer to the user guide for the configuration requirements for the radio operation in applicable European countries.

Introduction

These release notes for the Nortel Networks Wireless LAN Mobile Adapter 2201 release 1.1.0.0 provide information about software and operational issues not included in the Nortel Networks Wireless LAN Mobile Adapter 2201 documentation. For a list of Mobile Adapter 2201 documentation, refer to [“Related publications” on page 9](#).

The Nortel Networks Wireless LAN Mobile Adapter 2201 is part of the Nortel Networks Wireless LAN Series 2200 product line.

These release notes cover the following topics:

- [“New features,”](#) next
- [“Supported hardware” on page 4](#)
- [“Software compatibility matrix” on page 4](#)
- [“Entering multiple SSIDs for one profile” on page 5](#)
- [“Documentation known issues” on page 6](#)
- [“Known issues” on page 7](#)
- [“Resolved issues” on page 8](#)
- [“Related publications” on page 9](#)
- [“How to get help” on page 9](#)

New features

The following new features are offered with Nortel Networks Wireless LAN Mobile Adapter 2201 Software Release 1.1.0.0:

- **World Mode**—the Mobile Adapter 2201 supports the 802.11d global harmonization group protocol. When World Mode is enabled, the Access Point 2220/2221 will broadcast the current country-code configuration. The Mobile Adapter 2201 will automatically be configured for the proper power and channel settings for the specified country.
- **Wi-Fi Protected Access (WPA) with built-in supplicant**—with WPA support, the Mobile Adapter 2201 offers a model for security that addresses weaknesses found in WEP.

The Mobile Adapter 2201 supports both WPA authentication over 802.1x (Enterprise WPA) and WPA using a pre-shared key (Home WPA).

- **Protected Extensible Authentication Protocol (PEAP)**—PEAP allows authentication between wireless clients and a RADIUS or IAS server while protecting the Extensible Authentication Protocol (EAP) negotiation between the client and server.

For more information about these features, refer to *Installing and Using the Nortel Networks Wireless LAN Mobile Adapter 2201*.

Supported hardware

Nortel Networks Wireless LAN Mobile Adapter 2201 Release 1.1.0.0 supports the following mobile adapter:

- Nortel Networks Wireless LAN Mobile Adapter 2201

Software compatibility matrix

The following section discusses the components for Nortel Networks Wireless LAN Mobile Adapter 2201 software releases and covers the following topics:

- [“Software Release 1.1.0.0 components,”](#) next
- [“Software Release 1.0.2.5 components”](#) on page 5

Software Release 1.1.0.0 components

The components for the Nortel Networks Wireless LAN Mobile Adapter 2201 Software Release 1.1.0.0 are:

- Nortel Networks Wireless LAN Mobile Adapter 2201 driver 1.1.0.0
- Nortel Networks Wireless LAN Mobile Adapter Utility 2.1.0.0

Software Release 1.0.2.5 components

The components for the Nortel Networks Wireless LAN Mobile Adapter 2201 Software Release 1.0.2.5 are:

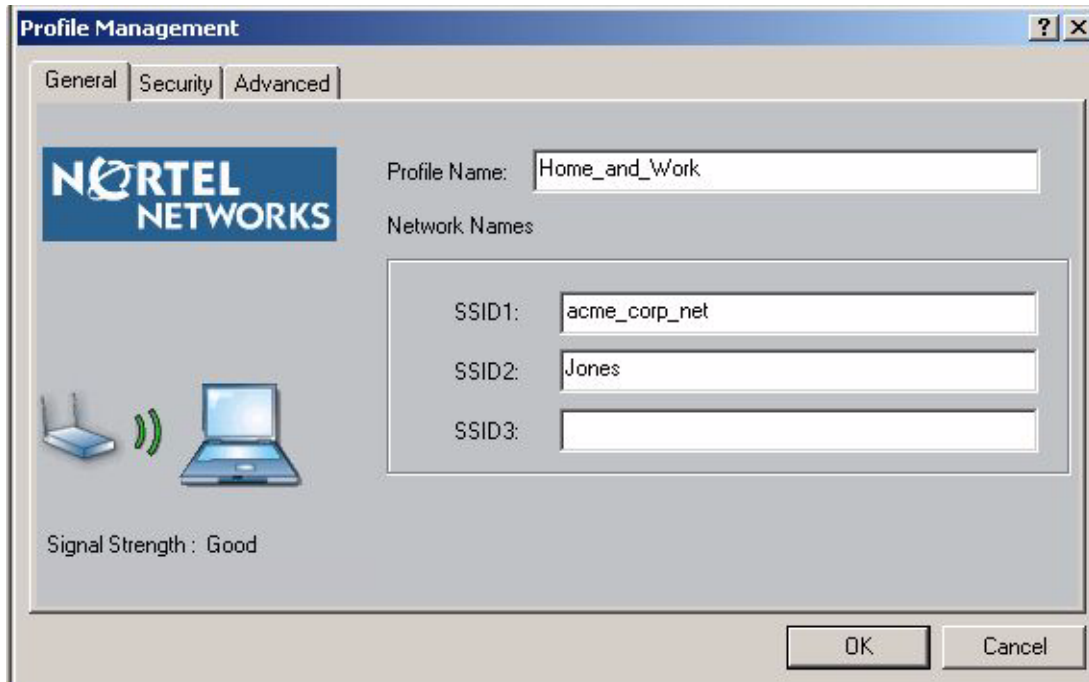
- Nortel Networks Wireless LAN Mobile Adapter 2201 driver 1.0.2.5
- Nortel Networks Wireless LAN Mobile Adapter Utility 2.0.2.5

Entering multiple SSIDs for one profile

Although it is possible to enter up to three SSIDs per profile in the Nortel Networks Wireless LAN Mobile Adapter 2201 utility, Nortel Networks recommends creating a separate profile with just one SSID for each WLAN to which you will be connecting.

However, if you wish to enter multiple SSIDs in one profile, these can be entered in the General Tab of Profile Management ([Figure 1](#)).

Figure 1 Profile Management — General Tab



The Nortel Networks Wireless LAN Mobile Adapter 2201 will attempt to associate with access points configured with any of these SSIDs. All settings for these networks, such as security, must be the same.

If these networks are not configured with the same settings, you must create a separate profile for each network, entering the unique settings required.

Documentation known issues

Because the Nortel Networks Wireless LAN Mobile Adapter 2201 has passed Microsoft WHQL certification, you will no longer see the *certificate not signed* error during installation.

Known issues

The following sections discuss the known issues with the Nortel Networks Wireless LAN Mobile Adapter 2201.

Known issues with software version 1.1.0.0

The following section discusses the known issues with software version 1.1.0.0 for the Mobile Adapter 2201.

- The driver date displayed in the Driver tab of Windows Device Manager is January, 30, 2004. The driver date displayed by the Mobile Adapter Utility is February 4, 2004. (WN6301-26B-00136)
- Because you first uninstall the utility, you will lose your profiles when you install the new card bus software. (WN6101-26B-00107)
- When associating to an access point using WPA, it may take up to 30 seconds for the client to begin the data-encrypted session. (WN6301-26B-00092)
- If logging is enabled on an access point, you may notice an association entry instead of a reassociation entry for some roaming clients. Functionality is not affected. (WN6301-26B-00070)
- The utility supports up to a maximum of 32 profiles.
- If you are installing the card bus on a machine running Windows 2000, the system may prompt you for the path to the driver. The typical path is: C:\Program Files\Nortel\Nortel Networks WLAN Mobile Adapter Utility\Installer\WIN2k.
- Once the wireless card is disabled, the lights on the card may still flash on and off.
- You may use the Mobile Adapter Utility to provide WPA, WEP, or 802.1x services. The Mobile Adapter Utility must be running to provide these services. If you exit the utility while your mobile unit is using these services, you will be disconnected from the network. Also, the utility doesn't start until after the user logs into the workstation, so users will not have access to the network until after they log in. This may require the user to log in twice, once to log into the workstation, and again to log into the network once the utility initializes. (WA6101-26B-00054)
- If logging is enabled on an access point, you may notice multiple RADIUS authentication entries in the log when a mobile client roams from another access point. (WA6101-26B-00025)

- Some protocol or network analyzer software installed on your PC may conflict with the Mobile Adapter 2201 utility and driver.
- When using 802.1x authentication within Windows 2000, you must have the latest service pack from Microsoft installed.
- The Unique Key feature is not supported in this release (NTB-Q00661058)
- When roaming from an 802.11a radio to an 802.11b radio or from and 802.11b radio to an 802.11a radio, you may experience a connectivity delay of up to three minutes. (NTB-Q00662313)
- When connecting to a Lucent Technologies* or Proxim* access point with WEP enabled, the Mobile Adapter 2201 will not associate unless the access point setting 'Deny Non-Encryption Data' is selected.
- The Activate button on the Site Survey tab of the Mobile Adapter 2201 utility will be grayed out if you select an entry with the same SSID as your current station configuration. It will become active if you select an entry in the site survey with a different SSID.

Resolved issues

The following issues are resolved in Nortel Networks Wireless LAN Mobile Adapter 2201 Software Release 1.1.0.0:

- The Mobile Adapter 2201 now works with Windows XP Tablet PC Edition.
- In previous releases, if the Access Point 2220/2221 was under very heavy traffic, a client may not be able to receive an IP address from the DHCP server. This has been resolved in release 1.1.0.0. (NTA-Q00627367/WN6301-26B-00004)
- In previous releases, if the Access Point 2220 was reset, a mobile client that had previously associated with the 802.11a radio would only associate with the 802.11b radio. This has been resolved in release 1.1.0.0. (NTB-Q00628273)
- In previous releases, when using the uninstall program to remove the Mobile Adapter 2201 utility, the erroneous message "The InstallShield Wizard has successfully installed the Nortel Networks WLAN - Mobile Adapter 2201 utilities" would be displayed when uninsttall was complete. This has been resolved in release 1.1.0.0. (NTB-Q00668326)

Related publications

For more information about the Nortel Networks Wireless LAN Series 2200 products, refer to:

- *Using the Nortel Networks Wireless LAN Access Point 2220/2221*
- *Installing and Using the Nortel Networks Wireless LAN Mobile Adapter 2201*
- *Nortel Networks Wireless LAN Access Point 2220/2221 Command Line Interface*
- *Country-specific Configuration for the Nortel Networks Wireless LAN Access Point 2220/2221*

You can print selected technical manuals and release notes free, directly from the Internet. Go to the www.nortelnetworks.com/documentation URL. Find the product for which you need documentation. Then locate the specific category and model or version for your hardware or software product. Use Adobe* Acrobat* Reader to open the manuals and release notes, search for the sections you need, and print them on most standard printers. Go to Adobe Systems at the www.adobe.com URL to download a free copy of the Adobe Acrobat Reader.

How to get help

If you purchased a service contract for your Nortel Networks product from a distributor or authorized reseller, contact the technical support staff for that distributor or reseller for assistance.

If you purchased a Nortel Networks service program, contact Nortel Networks Technical Support. To obtain contact information online, go to the www.nortelnetworks.com/cgi-bin/comments/comments.cgi URL, then click on Technical Support.

From the Technical Support page, you can open a Customer Service Request online or find the telephone number for the nearest Technical Solutions Center. If you are not connected to the Internet, you can call 1-800-4NORTEL (1-800-466-7835) to learn the telephone number for the nearest Technical Solutions Center.

An Express Routing Code (ERC) is available for many Nortel Networks products and services. When you use an ERC, your call is routed to a technical support person who specializes in supporting that product or service. To locate an ERC for your product or service, go to the <http://www.nortelnetworks.com/help/contact/erc/index.html> URL.