

Part No. NN47250-401 (320667-H)
December 2007

4655 Great America Parkway
Santa Clara, CA 95054

Nortel WLAN Management System 2300 Series Release Notes for Release 5.0.14.2



* 3 2 0 6 6 7 - H *

NORTEL

Copyright © 2007 Nortel Networks. All rights reserved

The information in this document is subject to change without notice. The statements, configurations, technical data, and recommendations in this document are believed to be accurate and reliable, but are presented without express or implied warranty. Users must take full responsibility for their applications of any products specified in this document. The information in this document is proprietary to Nortel Networks.

The software described in this document is furnished under a license agreement and may be used only in accordance with the terms of that license. The software license agreement is included in this document.

Trademarks

*Nortel, Nortel Networks, the Nortel logo, and the Globemark are trademarks of Nortel Networks.

All other trademarks and registered trademarks are the property of their respective owners.

Disclaimer

The network plan generated by the WMS planning tool uses a predictive RF model. This information is an estimate only of the amount, configuration, and placement of WLAN 2300 equipment and is intended to approximate project cost projections.

A Wireless LAN site survey service captures actual RF data to accurately model RF environments and is still the best method to determine correct location of APs, and therefore installation locations of cabling. A WMS network plan is an approximation only and does not substitute for a Wireless LAN site survey.

Contents

Regulatory Information	5
How to get help	7
Nortel WLAN Management System 2300 Series Release Notes for Release 5.0.14.2	9
What's new in WMS version 5.0.14.2	10
WMS license key activation	10
Version compatibility	11
Supported platforms	12
VoIP devices vendor support	12
Upgrading from WMS version 4.0, 4.1 or 5.0.8.1	12
Downgrading to a previous WMS version	13
Issues resolved since WMS version 5.0.13.1	13
Issues resolved since WMS version 5.0.11.3	14
Issues resolved since WMS Version 5.0.8.1	15
Issues resolved in WMS version 5.0	16
Known issues	20
Operating system related issues	29
Submitting problem reports	30

Regulatory Information

The FCC mandated new regulatory standards for Dynamic Frequency Selection in the 5.25 - 5.35 GHz and 5.470 - 5.725 GHz bands that went into effect on July 20, 2007. Nortel Networks introduced a new access point, the AP 2330B, that meets these new regulatory standards by disabling operation, via software, on channels 52, 56, 60 and 64 in the 5.25 - 5.35 GHz band.

WSS Release 5.0.11.4 and WMS Release 5.0.11.3 and later versions of these software releases support these models when using the US and Canada country codes.

How to get help

This section explains how to get help for Nortel products and services.

Getting help from the Nortel web site

The best way to get technical support for Nortel products is from the Nortel Technical Support web site:

<http://www.nortel.com/support>

This site provides quick access to software, documentation, bulletins, and tools to address issues with Nortel products. More specifically, the site enables you to:

- download software, documentation, and product bulletins
- search the Technical Support web site and the Nortel Knowledge Base for answers to technical issues
- sign up for automatic notification of new software and documentation for Nortel equipment
- open and manage technical support cases

Getting help over the phone from a Nortel solutions center

If you do not find the information you require on the Nortel Technical Support web site, and you have a Nortel support contract, you can also receive help over the phone from a Nortel Solutions Center.

In North America, call 1-800-4NORTEL (1-800-466-7835).

Outside North America, go to the following web site to obtain the phone number for your region:

<http://www.nortel.com/callus>

Getting help from a specialist by using an express routing code

To access some Nortel Technical Solutions Centers, you can use an Express Routing Code (ERC) to quickly route your call to a specialist in your Nortel product or service. To locate the ERC for your product or service, go to:

<http://www.nortel.com/erc>

Getting help through a Nortel distributor or reseller

If you purchased a service contract for your Nortel product from a distributor or authorized reseller, contact the technical support staff for that distributor or reseller.

Nortel WLAN Management System 2300 Series Release Notes for Release 5.0.14.2

What's new in WMS version 5.0.14.2	10
Version compatibility	11
Supported platforms	12
Upgrading from WMS version 4.0, 4.1 or 5.0.8.1	12
Downgrading to a previous WMS version	13
Issues resolved since WMS Version 5.0.8.1	15
Known issues	20
Operating system related issues	29
Submitting problem reports	30

Nortel recommends that you familiarize yourself with these release notes and the *Nortel WLAN Management Software 2300 Series User Guide* and *Nortel WLAN Management Software 2300 Series Reference Guide* before installation. For additional product information, refer to the following documents:

- ♦ [Nortel WLAN Security Switch Software 2300 Series Quick Start Guide](#)
- ♦ [Nortel WLAN Security Switch 2300 Series Installation and Basic Configuration Guide](#)
- ♦ [Nortel Access Point 2330/2330A Installation Guide](#)
- ♦ [Nortel WLAN Security Switch Software 2300 Series Configuration Guide](#)
- ♦ [Nortel WLAN Security Switch Software 2300 Series Command Line Reference](#)

What's new in WMS version 5.0.14.2



Release 5.0.14.2 adds support for resolution of several Release 5.0 known issues (go to section—[“Issues resolved since WMS version 5.0.13.1”](#) (page 13) for details.



Note. Refer to Release Notes for Release 5.0 for complete listing of new content added to Release 5.0.

WMS license key activation

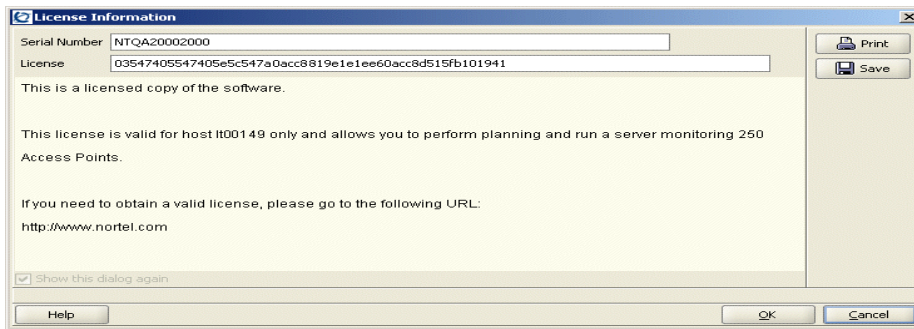
The planning and monitoring service features of WMS are licensed and require installation of license keys. Support for 50, 250, unlimited APs, and Planning Tool are activated using License Activation Keys.

A License Certificate is used to provide a single software license and its associated License Activation Key. The activation of the Planning feature and or the number of managed Access Points for your Nortel WLAN Management Software depends on the purchased software features.

To activate support or add additional functionality, you must obtain a License Activation Key from Nortel, and load the License Activation Key into the original host computer. To obtain the License Activation Key, follow the instructions on the License Certificate provided with the WMS Software Kit by Nortel.

When the proper License Activation Key is obtained, follow these instructions to enable the WMS functionality:

- 1** Load the WMS Application into the host computer. (Note: Ensure the software is loaded into the host computer that is specified in the License Key file.
- 2** Start WMS Application.
- 3** When the License Information dialog box appears, go to step 4.
If the License Information dialog box does not appear, click Cancel to close the WMS Services Connection wizard, then select Help > Licensing from the menu bar. The License Information dialog box appears.

Figure 1: License Information dialog box

- 4 Enter the authorization code and press *Enter*.
A single authorization code activates all the requested application software.
- 5 Your Nortel WMS application is now active. Note: For technical issues, please contact Nortel Enterprise Technical Support (NETS). See also “[How to get help](#)” (page 7).

Version compatibility

- This version of WMS has been verified against WSS Software Version 5.0.14.2.
- Network plans created with WMS 5.0.8.1 are compatible with this version of WMS. If you want to use network plans created with previous versions of WMS, make sure the option to delete the network plans directory is *not* checked when you uninstall.

After you install the new software, WMS asks whether the old network plans are to be sent to the server (if you want to keep them) or deleted. If multiple clients are using the same server, then the old network plans need to be copied only once. Nortel recommends that you archive the xml/db directory before you delete any old plans.
- If you are installing for the first time, you will need to install and activate licenses before using WMS. If you are upgrading from a previous licensed version, you do not need to reinstall your licences. (See “[WMS license key activation](#)” (page 10).)
- If you are upgrading from a version earlier than 4.0, Nortel recommends that you upgrade to 4.0 first, then upgrade from 4.0 to 5.0.

Supported platforms

- Microsoft Windows Server 2003, Microsoft Windows XP with Service Pack 1 or higher, or Microsoft Windows 2000 with Service Pack 4
- SUSE Linux 9.1 and Red Hat WS 3



Note. You must use the English version of the operating system you select. Operating system versions in other languages are not supported with WMS.



Note. See [“Operating system related issues”](#) (page 29) for important information about installing and running WMS on the platforms listed above.

VoIP devices vendor support

These are the Nortel supported options:

- SpectraLink—Non-WMM SVP devices
- Vocera—Non-WMM Vocera devices

Upgrading from WMS version 4.0, 4.1 or 5.0.8.1

You can install the new version of WMS on top of the previously installed one. You do not need to uninstall the previous version.

If you are upgrading from WMS Version 4.0 or 4.1 and you have network plans created or saved in the version you are upgrading from, Nortel recommends that you archive the config-db directory (if 4.1 or 4.0) before you install the upgrade.

To install the upgrade:

- 1** Make an archive copy of the config-db directory.
- 2** Run install.exe (Windows) or install.bin (Linux).
- 3** The first time you run WMS, if you upgraded from 4.0, it might ask you what to do with the old network plans.
 - If WMS Version 5.0 has already been installed on another client, and the option to copy the network plans to the server was selected, then do not select the option to copy the plans to the server. (See [“Unable to switch network plans.”](#) (page 24).)

Likewise, do not select the option to copy the plans to the server, if the plans have already been copied to the server manually.

- ♦ If this is the first installation of WMS Version 5.0, then select the option to copy the plans to the server.



Note. WMS 4.1 backup files can not be used with WMS 5.0.x.

Downgrading to a previous WMS version

If you need to downgrade from a WMS 5.0.x version to a previous 5.0.x version, use the following procedure:

- 1** Back up the network plans, by copying the config-db directory to a location that is not in the WMS installation path.
- 2** Uninstall the current WMS installation. Select to delete all but the license and the network plans.
- 3** Install the earlier WMS software version.
- 4** After installation, copy the folders in the backed up config-db directory to the one that is created by the installation in step 3.

When you start the downgrade version of WMS, it opens the Default network plan.

If you need to downgrade the WSSs managed by WMS, you can do so before or after the WMS downgrade.



Note. Nortel recommends that you do not downgrade to previous WMS versions. Database files saved in WMS Version 5.0 cannot be used in earlier WMS Versions. In addition, WSS Software features that are new in WSS Software Version 5.0 are not supported in previous versions of WMS.

Issues resolved since WMS version 5.0.13.1

An alarm notification through email could cause the WMS server to cease responding when the mail server fails to send an SMTP response. (44539)

Using WMS to distribute certificates to WSS causes unexpected behavior with the WMS client. (43820)

Changing radio profiles from one name to another in a wireless service profile policy does not work as expected when applied to devices. The device would be configured with both profiles. (42691)

Issues resolved since WMS version 5.0.11.3

WMS showed incorrect session details. (41699, 41582)

Client statistics panel does not collect information on clients who roam. (41551)

Certain URLs that contain escape characters (in the form %HexHex) are not handled by Web Portal and may prevent the client from accessing the login page or loss of Web connectivity. Such URLs have been known to be generated by applications like Windows Live Messenger. It is recommended that clients do not run this type of application before performing Web Authentication. (41477)

When creating a DNS server in WMS you must define if it is the primary or secondary DNSserver. By default WMS always suggests secondary while Primary is selectable from drop-down menu. (41249)

On the Reboot WSS/AP page, it was difficult to identify an WSS that can reboot a given DAP as all DAPs that were configured on multiple WSS switches. (40365)

If 'RF & Traffic Trending' is changed from disabled to enabled, WMS did not appear update the display of 'RF Neighborhood' for an APs radio until the WMS service was restarted. (40364)

Various issues that improve the ability of WMS to address large scale deployments. (39917, 39861, 39860, 39859)

You can no longer create hidden coverage areas in floor plans. (39726)

When creating a policy that applied to VLAN, Spanning Trees and Port Groups, and then creating the associated VLAN, WMS did not display the Port Groups. (39654)

Issues resolved since WMS Version 5.0.8.1

When the Alarms Panel was open, memory usage increased and caused WMS to become unresponsive. (37995, 35474)

When installing the Linux version of WMS software, the Client option was missing from the installation screen. (37986)

Occasionally in WMS, you could not save backup files. (37845)

Wording for the Autotune Wizard was misleading and confusing. (37829)

Incorrect session displayed for an WSS on the network. (37559)

The error message that occurred when a corrupted plan or monitoring history was displayed was unclear and ambiguous. (37080)

Lowered default severity level for several critical alarms to major or minor. This improves alarm usability by only making the most important service-affecting alarms critical.(36693)

Using a “&” character in a DAP name causes the reporting to fail. (36655)

Removed duplicate alarm that states "DAP with serial number (x) is not reporting a status" when a AP/DAP is down. Only one alarm is displayed now.(36534)

WMS was incorrectly marking WSS & APs as down and creating critical alarms due to incorrect flapping detection. (36098)

Clicking "print" from the "modify user" dialog now prints the plaintext (decrypted) password instead of the ciphertext.(35694)

Pressing the ESC (escape) key will now cancel or close the active dialog box or wizard. (34274)

The floor plan vanishes from Monitor Floor Viewer. (33739)

Solaris: It was not possible to start a browser to activate the Web interface to WMS Services. (30234)

When a client roamed, the reported location was inaccurate. (29795)

Open access rules folder does not appear for an WSS switch that was downgraded from release 5.0 to 4.0 (29790)

MacOS: WMS licenses were becoming invalid after the host running WMS Services is restarted. (29637)

MacOS: WMS services must be started manually. (28305)

Issues resolved in WMS version 5.0

Changes to radio-profile settings were not synchronized across all redundant APs. (31503)

Description Starting in this release, when a user changes the radio profile selection on one AP, WMS attempts to change the radio profile on all of its redundant connections, but if that radio profile does not exist on a redundant AP, it will be left alone (in some cases, this means that the radio-profile will be set to default).

MAC users disappeared from policy. (32072)

Description After creating a Web-based AAA policy that included a series of MAC addresses, then deploying the policy to a WSS, if you then restarted WMS, the specified MAC addresses no longer appeared in WMS, but were visible in the configuration on the WSS.

The “no auto-tune data available” message returned by the Disable Auto-Tune wizard was misleading. (32807)

Description When running the Disable Auto-Tune wizard against a WSS with configured DAPs not booted off the WSS (for example, low bias) the progress dialog displays “no auto-tune data available” for each configured DAP not actually booted from the WSS, which could lead users to think there is a problem when none exists.

Attempting to restore backup files larger than 25 Mb caused error messages to be displayed. (33461)

A network plan that included a floor layout with null characters in its layer names could not be imported into WMS. (33935, 33241)

Creating an SNMP Notification target caused an error to be displayed. (34101)

Linux: HTML generated in WMS reports incorrectly used uppercase letters to refer to .jpg files that had filenames with all lowercase letters. (34125)

Java errors when starting Web Client. (34138)

Description After installing the Web Client on a client machine, attempting to launch the Web Client displayed a message indicating certain files could not be located. WMS was looking for these files in the location they would be on the WMS server, but they would not necessarily be in that location on the client machine.

A large number of DeviceChange events being unnecessarily generated by the server caused WMS to become unresponsive. (34151)

It was not possible to launch the WMS Web client because the WMS .jar file and third-party .jar files were signed by different certificates. (34196)

Possible memory leak caused WMS services to be non-responsive. (34349)

When WMS was resolving verification rules, and a “Modo member is missing”, verification message was displayed, clicking “Remove Member”, caused WMS to crash. (34408)

The dot1X trace function incorrectly generated an error message due to an empty MAC address, and enabling traces using WMS did not cause them to be listed as local changes. (34418)

After creating one Distributed AP from the Alarms panel, an error message was displayed when attempting to create a second Distributed AP. (34446)

After making a configuration change in a network plan, the WMS screen constantly “refreshed”, slowing down performance. (34718)

Filtering and sorting alerts for different areas and severities caused WMS to crash. (34752, 34455)

Deploying access rules from WMS to a WSS did not create them on the switch, and deleted access rules that were already on the switch. (34778)

An exception occurred when an access rule was created in WMS, an access rule was created on a WSS using the CLI, and then the network change was accepted by WMS. (29415)

WMS clients froze when multiple clients requested information at the same time. (29851)

Description When two (or more) WMS clients requested information from the WMS services host at the same time, one client retrieved the information, while the other client(s) waited. While waiting, the other client(s) were unable to do anything until the first client was finished with its request.

Polling devices immediately after startup made it difficult to connect to the WMS services host. (29854)

Description In a network plan with a large number (greater than 700) of WSSs, after WMS services finished starting, it attempted to poll all of the WSSs at the same time, causing high CPU usage and making it difficult to connect using the Web interface or a WMS client. In addition, polling all of the devices at once consumed all of the I/O threads, making it impossible for a second WMS client to connect. WMS now waits until the Web server and all services have been initialized before polling devices in the network plan.

Local change resulted in Network change that could not be accepted or undone. (31067)

Description This issue occurred in the following scenario:

- 1** On a WSS, SNMP is enabled with the security type set to Encrypted and the protocol set to USM (SNMPv3).
- 2** The WSS is uploaded into WMS.
- 3** On the WSS, the command to disable USM is entered at the CLI.
- 4** The resulting network change is accepted in WMS.
- 5** On the WSS, the configuration is saved, and the WSS is rebooted.
- 6** After the WSS is rebooted, WMS indicates a network change that USM has been changed from enabled to disabled. However, this change cannot be accepted or undone; clicking Accept or Undo has no effect.

In the Tasks View dialog, the device name disappeared from the list of entries when sorted. (31374)

Description If you displayed information in the Tasks View dialog (by selecting the Devices icon, then the View Operation Log task) the entries are initially sorted according to the Device column. If you then sorted the entries according to a different column, the names of the devices disappeared from the sorted list, making it impossible to sort the entries by device name again.

Creating a policy caused Web-based AAA related settings for a WSS to be overwritten. (31402)

If you reordered authentication server groups, it did not create a local change that could be deployed. (31421)

In RF planning, the coverage for APs using omnidirectional antennas was being shown as directional. (31671, 31033)

The RF Monitor function did not display the correct list of WSSs configured for AP redundancy. (26858)

The RF Monitor function did not display user-defined names for DAPs. (27399)

Applied changes for ACLs in policies only took effect when the ACLs were deleted or created, but not when the ACLs were modified. (29416)

Description When you created an ACL using a policy, then applied the policy to a WSS, the ACL was correctly shown in the WSS's configuration. However, if you subsequently modified the ACL and deployed the changes to the WSS, WMS indicated that the changes deployed correctly, but the ACL changes did not actually appear in the WSS's configuration.

A policy containing Wireless Service Profiles and Radio Profiles could not be applied. (29659)

WMS crashed when saving RF obstacle data for a floor took longer than 15 minutes (29674)

Selecting a single WSS created by the RF Planning function and pressing Ctrl+D did not allow you to delete the WSS. (29676)

In a Network Plan consisting of multiple floors, the WMS Compute and Place function placed APs on the incorrect floor. (29679)

When configuring a Web Portal service profile, in the Authentication Server(s) dialog, the LOCAL option was not available in the Available RADIUS Server Groups list. (29685)

Message "Error: The server is currently unavailable due to critical errors encountered during startup." displayed when starting WMS. (29762)

Description Changing the model type for a switch in a network plan, then restarting the machine running WMS Services, resulted in an error message when you connected to the machine running WMS Services.

Deploying changes to an WSS caused the WSS to produce a core file. (29773)

Creating a Voice service on an Open Access SSID using the Wizard did not create the required Open Network Access Rule. (29785)

RF Detection resolution showed a blank screen. (29787)

Description If you added a MAC address to both the Rogue list and the Ignore list, an error message was displayed (correctly), but when you tried to view the details of the error message under the Verification tab, a blank screen was displayed.

Selecting a large number of WSSs (more than 10) and then accepting network changes for these WSSs took a long time. (29846)

Using certain IP address ranges generated Verification warnings. (29847)

Description If you tried to configure devices in WMS to use Class A IP addresses in a range higher than 126.0.0.0 (191.0.0.0 for Class B, 223.0.0.0 for Class C), WMS indicated that the IP address was not in any standard class (A, B, or C).

Device list data reverts to default sorting order after reviewing changes. (29848)

Description On the Devices Tab, if you clicked on a data column to sort the list of devices according to the data in that column, then clicked on Review to review local or network changes, when you closed the Review Changes dialog, the data in the device list reverted to the default sorting order.

WMS displayed a Warning message indicating an invalid slot number (0) was detected for an AP. (30331)

After clicking Objects to Place option, an Internal Application Error message was displayed. (30344)

The AP Redundancy dialog did not use max. configured AP count. (30553)

Description The Select Bias and Device(s) for Redundancy dialog, used in the Setup AP Redundancy wizard, displayed the number of APs that could be booted by the switch, instead of the maximum that could be configured on the switch.

New AutoCAD formats were not supported by WMS, and opening a floor plan with an unsupported AutoCAD format could cause an exception. (22542)

Attempting to copy and paste a service profile from one WSS to another WSS of a different model caused a Java exception. (25128)

Verification options did not allow changing the Default network plan's country code to match an uploaded WSS's, if the WSS's country code was not US. (27048)

WMS did not check for available space on a WSS's nonvolatile storage before attempting to download an image to the switch. (27521)

If you selected the Use System IP Address checkbox in the RADIUS configuration section, WMS did not see it as an available change. (28824)

Configuration parameters of an unmanaged switch that had the same configuration as a managed switch were listed as local configuration changes. (29121)

Access Control List (ACL) Setup Panel disappears when returning to setup panel screen from Device panel (33760)

Workaround Exit the ACL screen by selecting a feature on the Organizer panel (VLANs, QoS, etc.) and then return to the ACL screen.

WMS java client running on Windows XP or Windows Server 2003 reports an internal error of "failed connection to SQL database" (33890)

WMS Web client incorrectly shows switch connection settings as "WSS Connection Settings" it should show "WSS Connection Settings". (33958)

Known issues

Linux: Default browser is Firefox, which is not included with SuSE. (30491)

Description On SuSE, the default browser executable is Firefox. However, the Firefox browser is not included with the SuSE distribution; only the Konqueror browser is. The Konqueror browser is not supported by WMS.

Workaround Install a different browser for accessing WMS online help. Preferred browsers for Linux are Firefox, Opera, Mozilla, and Netscape.

WMS does not support 64-bit operating systems. (36335)

Description This release of WMS does not support 64-bit operating systems, such as Windows XP Professional x64 Edition, due to memory issues that may arise when the WMS server is managing a large number of switches and APs.

Workaround Use a 32-bit operating system for your WMS installation.

On Windows 2000, the default browser executable in WMS does not launch the browser. (38894)

Workaround You can manually select a browser executable at Tools -> Preferences -> Tools -> Browser Executable. For example, to use Internet Explorer, you can specify C:\Program Files\Internet Explorer\IEXPLORE.EXE as the executable.

A non-administrative user cannot run WMS. (12155)

Description WMS generates an exception if a user does not have administrative privileges on the WMS host. This issue involves the Java Virtual Machine (JVM) that is being used by WMS and should be resolved with a future release of JVM.

Workaround To use WMS, users must belong to a “Power Users” group or be added to the administrators group in the Windows operating system.

When the VLAN name is composed entirely of numbers in ACL VLAN mappings imported from the CLI, WMS assumes that the VLAN name is a VLAN ID. (12682)

Description A VLAN can be specified in the CLI by its VLAN ID or its VLAN name. When the CLI command is imported into WMS, the VLAN reference type is not apparent. If the VLAN reference is composed entirely of numbers, WMS assumes that the reference is a VLAN ID. Otherwise, WMS assumes that the reference is a VLAN name.

Workaround Do not use VLAN names that consist entirely of numbers.

Importing of a floor plan in JPEG format might fail with a color conversion exception. (14631)

Description On rare occasions, importing a floor plan in JPEG format might fail with the following Java exception:

sun.awt.image.ImageFormatException: Unsupported color conversion request.

This exception occurs because of unusual color palette settings in the file.

Workaround Using a JPEG editing tool, manually remove all extraneous information possible to remove the problematic color information. Alternatively, convert the JPEG file into a GIF file to import.

Size or location adjustments of shared coverage areas with identical dimensions might cause problems when you run Compute and Place. (14631)

Description When shared 802.11a and 802.11b/g coverage areas are created, one coverage area is directly placed on top of the other. If you resize or move one of the coverage areas, the other coverage area is now a different shape or in a different location. Running Compute and Place might not work.

Workaround Use the dimension toolbar icon to set the center and size of each coverage area to identically match each other.

When importing a CAD file (DWG/DXF), any lines with arrowheads will display incorrectly. (15906)

Description When importing DXF or DWG CAD files with lines that have line ends (arrows, dots, and so on) the objects get imported with huge arrows at the ends of the lines.

Workaround Use a CAD program to remove any arrowheaded lines, or modify the line’s properties to not display an arrowhead. Alternatively, delete the line while in the Edit Content page of the Floor wizard in WMS.

WMS does not support the Ctrl + drag-and-drop mouse operation. (16425)

Polling interval for client session cannot be changed. (17585)

Description By default, WMS polls every 30 seconds for performance monitoring of a client chosen from the watch list. This polling interval cannot be modified.

Enabling STP on a WSS’s management VLAN causes a configuration deployment to fail. (17668)

Description If you use WMS to enable STP on a WSS's management VLAN, then deploy the configuration, the deploy fails. The failure occurs because the management interface must pass through the standard Listening and Learning states, which together take at least 30 seconds, before the interface can change to the Forwarding state. Until the interface reaches the Forwarding state, the switch cannot receive traffic, such as configuration deployment from WMS, on its management interface.

Workaround If this occurs, wait 30 seconds for the interface to reach the Forwarding state, then accept the WSS's change in WMS.

Disabled radio on operational AP does not turn red if the AP or WSS becomes unavailable. (18330)

Description In the Explore and Status Summary windows of the Monitor tab, the operational state of Nortel equipment is indicated by color, and is also indicated in the Status column of the Status Summary window. For example, if a WSS goes down, its icon turns red. However, if the AP or WSS for a disabled radio goes down, the radio does not turn red. In addition, the value in the Status column of the Status Summary window changes from *Operational* to *Not Applicable*. (It is normal for a disabled radio's state to be *Operational*, since disabled radios perform RF sweeps for rogue detection.)

Workaround This issue is cosmetic only and does not affect other information displayed for the equipment.

Daylight Savings Time or timezone changes are not automatically detected in WMS. (18422)

Description If a Daylight Savings Time or timezone change occurs on the host machine where WMS is running, displayed timestamps are not automatically updated in WMS.

This issue is actually a Java Virtual Machine (JVM) issue. The JVM does not detect date or time changes made at the OS level. See the following web page:

bugs.sun.com/bugdatabase/view_bug.do?bug_id=4216582

Workaround Exit and restart WMS to place a date or time change made on the host machine that is running WMS into effect.

Opening a network plan that has more APs than the license allows sets all WSSs in the plan to unmanaged. (19841)

Description If you open a network plan that has more APs than your license level allows, WMS deselects the **managed** option on the switches.

Workaround To manage the switches, remove enough APs to bring the total down to the allowed limit, then reselect the **managed** option for each switch and save the changes. (The **managed** option is available on the System & Administrative page of the WSS wizard.) Alternatively, you can upgrade your license.

dbtools command line utility is not applicable to backing up or restoring network plans. (20416)

Description WMS 4.1 automatically saves backups of network plans, and enables you to configure backup options, create backups, and restore network plans from backups. However, the network plan backups cannot be managed using the **dbtools** command line utility.

Workaround To manage network plan backups, use the Backup & Restore function.

License upgrade requires restarting WMS Services. (21342)

Description WMS Services checks license information when you start the server.

Workaround If you upgrade a license, do the following to place the license upgrade into effect:

- 1 Select **File > Close** to log off of WMS Services.

- 2 Select **File > Connect**, then click **Next** to log back on to WMS Services.

Radio statistics for Auto DAPs are not correct. (21644)

Description The radio statistics for DAPs that are configured by the Distributed AP profile (*Auto-DAP profile*) are not correct. However, statistics for statically configured APs (Distributed and directly attached) are correct.

Repeated error message when copying a notification profile without editing the name. (22759)

Description If you select a notification profile in the Notification Profiles table and click the copy icon, then click **OK** in the Notification Profile Properties dialog without first editing the profile name to make it unique, WMS displays the following error message multiple times:

A Notification already exists with the same key [Trap Type]

Workaround Despite the repetition, the messages mean simply that you need to edit the profile name to make it unique. Click **OK** to clear the messages, then edit the profile name.

Mouse must be still during clicks when selecting multiple rows in tables. (23189)

Description WMS supports multiple selection of objects using the CTRL+right-click method. However, if you move the mouse as you are clicking, the previously selected rows are deselected.

Workaround To avoid this issue, make sure the mouse is not moving before you click.

Email Notification is not supported. (26684)

Description WMS 4.0 had some email notification fields on the Network tab of the client Preferences dialog. These fields were not supported in WMS 4.0 or 4.1 and are not supported in WMS 4.2. The fields were still present in WMS 4.0 but have been removed from WMS 4.1 and later.

Unable to switch network plans.

Description If you try to switch to a version 3 network plan that still exists on the local client, WMS displays a dialog box asking you what to do with the version 3 network plans. The default is to send them to the server. However, this will fail if a copy already exists on the server (for example, copied there by another user). If you cancel this dialog box, the network plan will not be switched.

Workaround After you copy the version 3 plans to the server, rename the config-db directory to config-dbold. You can now switch to the copy of the network plan on the server.

Open access rules folder does not appear for a WSS that was downgraded from release 5.0 to 4.0 (29790)

Description If you downgraded a WSS from version 5.0 to version 4.0, if it had an Open Access service profile, there was no Open Access rules folder in WMS.

Workaround None. The open access rules were deprecated in release 4.1

When a client roamed, its reported location was inaccurate (29795)

Description If a client roamed from its original location to a new location, the location reported by WMS after the client moved was inaccurate by a substantial amount. If the client did not move again, WMS was more accurate the next time the client was located.

Workaround To ensure a more accurate location reading for a client that has recently roamed, wait two to three minutes after the client has stopped roaming to locate the client with WMS.

Network optimization option not available in WMS.

Description The Network checkbox, which causes WMS to use RF neighborhood information imported from AP radios in the network when optimizing a network plan, is no longer available in the RF Neighborhood Source dialog (under RF Planning, Import Measurement task).

Workaround None. Optimizing a network plan using measurements imported from AP radios in the network (that is, network optimization) is a deprecated feature in WMS 5.0.

WMS crashes and loses all configuration when performing backup and restore of network plan. (33895)

Unable to remove Third-Party APs heading from WMS Organizer panel even though the AP can be deleted. (33728)

The number of alarms showing in the chart view on WMS differs from the quantity of alarms shown in the corresponding table view. (33727)

WMS Monitor shows traffic details in negative numbers. (33702)

Switching to Monitor > Status Monitor Details on a switch listed in the network plan, but unavailable, caused WMS to crash. (33475)

WMS web client message: Java Runtime Environment 5.0 popup states “Java Web Start is not installed - download JRE5.0” This is a cosmetic error message and will be addressed in WLAN 6.0. (Q01540767)

WMS 4.1 backup files can not be used with WMS 5.0.x (Q01523749)

Description Backup files saved in WMS release 4.1 cannot be restored in WMS release 5.0.

WMS does not collect client statistics and a chart is not generated. (36613)

Description WMS Monitor Client Details does not collect client statistics when viewing data from the WSS 2380.

Changing rate configuration using WMS (Q01576410)

Description When radio transmission rates for both b and g radios are changed at the same time and deployed to the switch through WMS the transmission rates can be corrupted through CLI output seed switch and some users will lose connection. If both radio transmission rates are set to default, the g radio will only transmit rates of 1.0 and 2.0

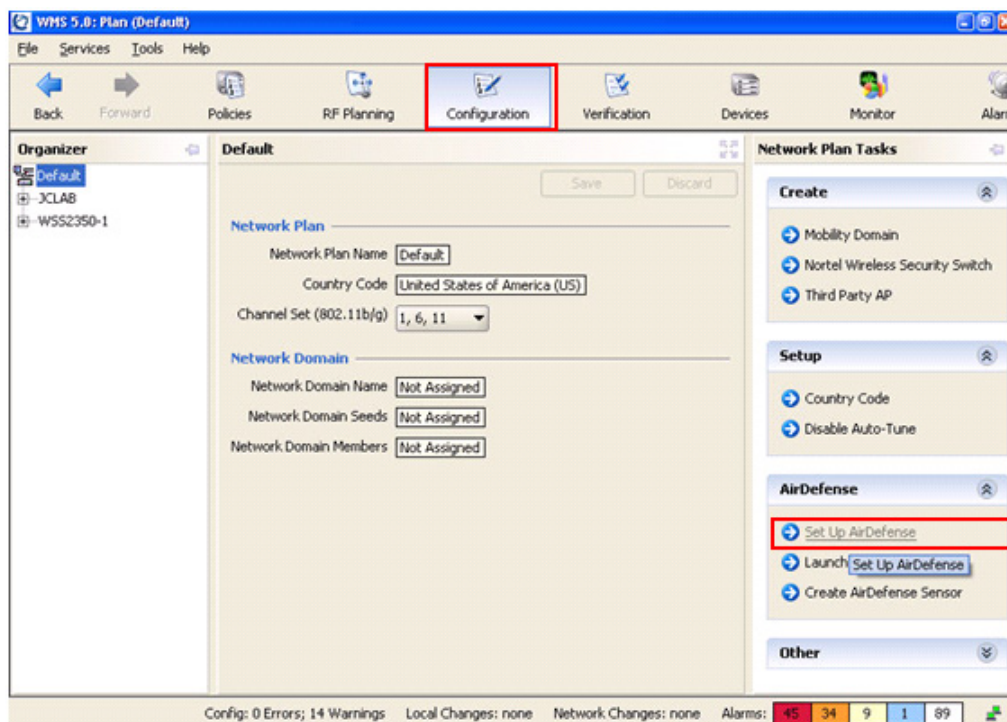
Workaround Deploy only one radio at a time.

Converting Access Points to Sensors using WMS (34278)

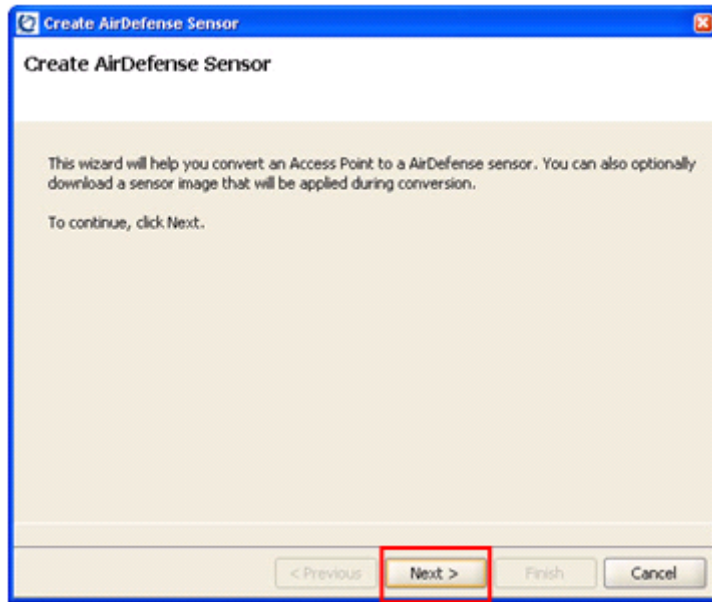
Description To convert a Nortel Access Point to an AirDefense Sensor using WMS.

Workaround To convert a Nortel AP to and AirDefense Sensor, do the following:

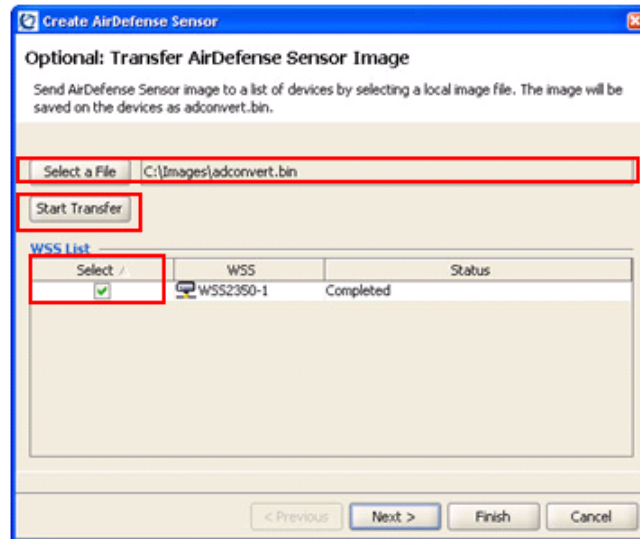
- 1 In WMS, click **Configuration** in the **Menu Bar** and in the **Organization Panel** select the plan name (for example Default). In the **AirDefense task** panel click **Create AirDefense Sensor**



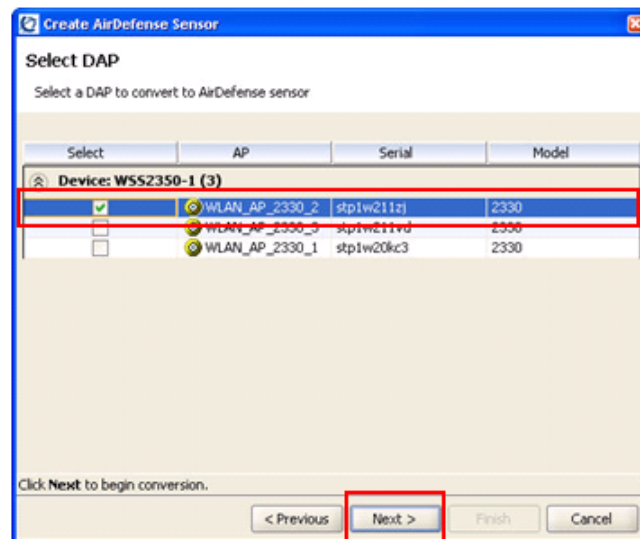
- 2 In the Create AirDefense Sensor window click **Next**.



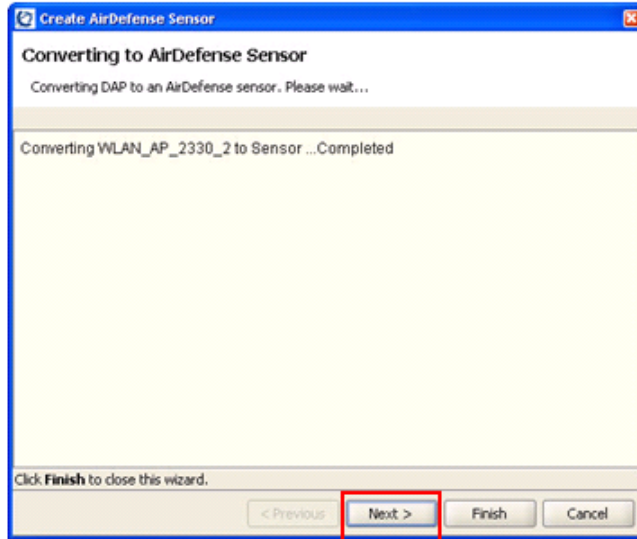
- 3 If the AirDefense conversion image has not yet been transferred to the Nortel Wireless LAN Security Switch, click **Select a File** and select the AirDefense conversion image. Once the image has been specified, in the **WSS List** select one or more Nortel Wireless LAN Security Switches to transfer the image too and then click **Start Transfer**. The conversion image will be transferred to the Nortel Wireless LAN Security Switch and will be named **adconvert.bin**. Once the transfer is completed, a Completed message will be displayed in the Status field. Click **Next**.



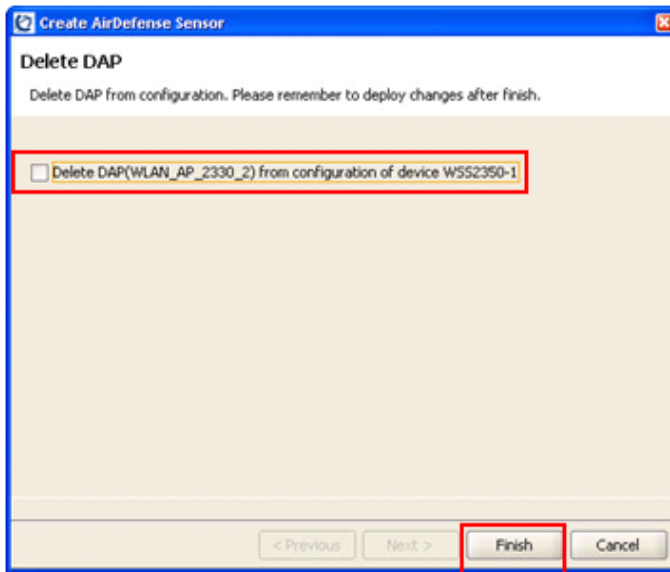
- 4 Select one or more Nortel Access Points to convert to AirDefense Sensors. Once selected click **Next**.



- 5 The specified Nortel Access Points will now be instructed to download the AirDefense conversion image their Nortel Wireless LAN Security Switch. If successful a **Completed** message will be displayed for each Nortel Access Point. Click **Next**.



- 6 You can optionally delete the Nortel Access Points configuration from the Nortel Wireless LAN Security Switch. Deleting the configuration will remove any AP Down alarms from being displayed in WMS as well as free an Access Point connection on the Nortel Wireless LAN Security Switch. Click **Finish**.



Operating system related issues

Linux: Installing WMS on Linux crashes when the display permissions are not set correctly. (15344)

Description The installation program is an X Window System application. Display permissions for your desktop environment need to be correctly set for the installation program to run successfully.

Workaround Use the **xhosts** or **xauth** commands to allow the installation program to run in your desktop environment.

Linux: Installation might require some Linux setting changes. (25196)

Description If you are installing WMS on a newer Linux version such as Redhat Fedora Core FC4, installation might not be successful and a message such as the following might be displayed.

Error: cannot restore segment prot after reloc: Permission denied

Workaround If this occurs, you might need to change some Linux setting changes. For more information, see the following:

<http://www.rsinc.com/services/techtip.asp?ttid=3092>

<http://sunsolve.sun.com/search/document.do?assetkey=1-25-83248>

Linux: Online Help does not work with Konqueror browser on Linux (27225)

Description Attempting to open WMS online help with Konqueror 3.1-12 on KDE 3.1-10 can cause an empty browser window to be displayed.

Workaround Install a different browser for accessing WMS online help. Preferred browsers for Linux are Firefox, Opera, Mozilla, and Netscape.

Linux: Default browser is Firefox, which is not included with SuSE. (30491)

Description On SuSE, the default browser executable for WMS is Firefox. However, the Firefox browser is not included with the SuSE distribution; only the Konqueror browser is. The Konqueror browser is not supported by WMS.

Workaround Install a different browser for accessing WMS online help. Preferred browsers for Linux are Firefox, Opera, Mozilla, and Netscape.

Windows: Running WMS services on Windows XP is not recommended for network plans with more than 10 devices. (32095)

Description Because of a limitation in Windows XP that allows no more than 10 half-open connections, running WMS services on Windows XP is not recommended if your network plan contains more than 10 devices. If 10 devices in your network plan were unreachable or not responding, Windows XP would exceed its half-open connection limit, and connection attempts to reachable devices might time out as a result.

Workaround If your network plan contains more than 10 devices, and you want to run WMS services on a Windows system, use a server OS, such as Windows 2000 or Windows 2003, instead of Windows XP.

In WMS local changes are available after upgrading from WSS 4.1.x to 5.0.x (32402)

Description In software release 4.1.x, the radius key is set to clear, while in 5.0.x the radius key is encrypted. This produces local changes after upgrading.

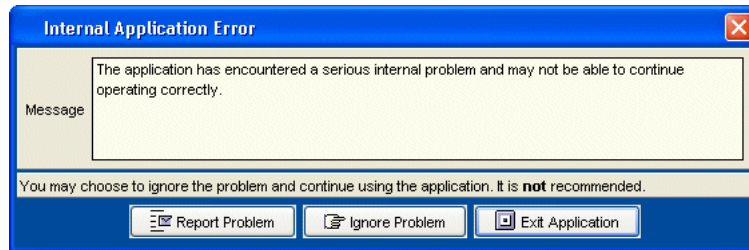
Workaround Undo the local changes after upgrading

In WMS 5.0.x for last-resort user functionality the user must deploy local changes after downgrading from 5.0.x to 4.1.x. (33182)

Submitting problem reports

WMS can send problem reports to the Nortel Enterprise Technical Support (NETS) team directly when it encounters a problem. You can also send a problem report at any time by selecting **Help > Report Problem** in WMS.

If a problem occurs, the Internal Application Error dialog box appears.



To submit a problem report:

- 1 Do one of the following:
 - ♦ In the Internal Application Error dialog box, click **Report Problem**.
 - ♦ Select **Help > Report Problem**.

The Report Problem to Nortel dialog box appears.

Report Problem to Nortel

If you provide the following information, support will be able to investigate the problem more effectively

- A detailed description of the steps you took
- The application log information
- The network plan file being used
- The runtime environment

Information

Contact Company (Required)

Contact Name

Contact Phone

Contact E-mail

Contact Availability Yes, I am available to provide details if necessary.

Include Java Environment Yes, e-mail the JRE information to Nortel.

Include Log Information Yes, e-mail the application log file to Nortel.

Include Network Data Files Yes, e-mail the current network plan and server data to Nortel.

Description

Enter a short description of the steps you took prior to the error.

Save Close

2 Fill out the information in the dialog box.

Provide your name, and enter as much detail as possible about the task you were performing when the problem occurred. You must provide the name of your company.

3 Click **Save** to store the problem report on the WMS host.

The problem report is saved as a directory with a name containing the timestamp of the problem report (for example, Mon-Aug-21-13-04-11-PDT-2006). This directory is located in C:\Documents and Settings\user_home_directory\Nortel\bugs, where *user_home_directory* is the home directory of the user that is running WMS at the time the problem report is generated.

Nortel WLAN Management System 2300 Series Release Notes for Release 5.0.14.2

WLAN 2300 Series

Release 5.0

Document Number: **NN47250-401**

Document Status: **Standard**

Document Version: **01.04**

Part Code: **320667-H**

Release Date: **December 2007**

Copyright © Nortel Networks Limited 2007 All Rights Reserved

The information in this document is subject to change without notice. The statements, configurations, technical data, and recommendations in this document are believed to be accurate and reliable, but are presented without express or implied warranty. Users must take full responsibility for their applications of any products specified in this document. The information in this document is proprietary to Nortel Networks.

*Nortel, Nortel (Logo), the Globemark, and This is the way, This is Nortel (Design mark) are trademarks of Nortel Networks.

*Microsoft, MS, MS-DOS, Windows, and Windows NT are registered trademarks of Microsoft Corporation.

All other trademarks and registered trademarks are the property of their respective owners.

To provide feedback, or to report a problem in this document, go to www.nortel.com/documentfeedback.

